

# CRISP Monthly Reports

June 2014

The Chesapeake Regional Information System for our Patients (CRISP), the State-Designated health information exchange (HIE), submits monthly status reports to the Maryland Health Care Commission (MHCC). The monthly reports provide updates to the HIE program and use of HIE services, and the Regional Extension Center (REC) program. The MHCC's Center for Health Information Technology & Innovative Care Delivery uses the information to facilitate development of the State-Designated HIE, craft policy around privacy and security, and develop initiatives to expand health information technology adoption, including electronic health record adoption and meaningful use.

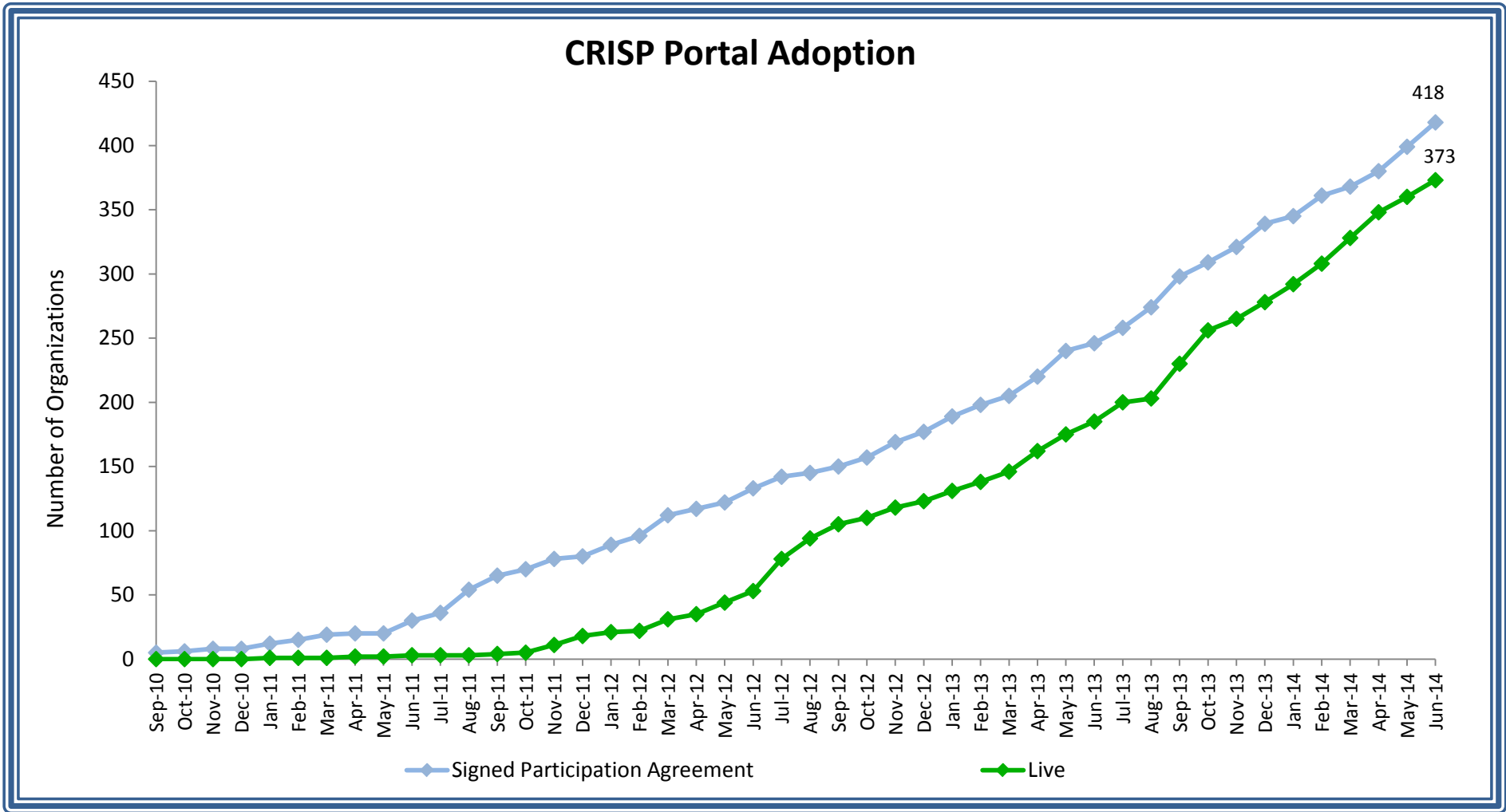
## At a Glance

HIE Category	New April	New May	New June	Total* #	Total* %
<b>Ambulatory Practice Data Consumption</b> (# of organizations) N=6,537					
Signed participation agreements - CRISP Portal	11	19	16	290	4.4%
CRISP portal live	18	10	11	258	3.9%
Direct message accounts live	2	21	17	308	4.7%
Encounter notification service live	5	3	10	74	1.1%
<b>Hospital Data Submission</b> (# of hospitals) N=46					
Laboratory reports	1	0	2	36	78%
Radiology reports	1	0	1	40	87%
Transcribed reports	1	1	1	38	84% <sup>1</sup>
<b>Long Term Care Data Consumption</b> (# of organizations) N=235					
Signed participation agreements - CRISP Portal	0	0	3	38	16%
CRISP portal live	0	2	2	29	12%
Encounter notification service live	0	1	0	7	3%
<b>Query Portal Usage</b>					
Number of CRISP Portal queries <sup>2</sup>	40,111	46,033	45,524		
Single-sign on live in Maryland hospitals	0	0	0	5	11%

\*Totals are cumulative

Notes:

- Garrett County Memorial Hospitals has no plans to submit transcribed reports to CRISP
- Number of CRISP Portal queries not listed in Total # and Total % columns because CRISP Portal queries are not calculated based on a cumulative total over time



**Key Terms:**

**CRISP Portal:** A standalone web-based system that contains patient health information from Maryland hospitals and other providers connected to the HIE. Information available via the portal includes patient demographics, laboratory results, radiology reports, discharge summaries, operative and consult notes, and medication fill history

**Participation Agreement:** Providers sign a participation agreement with CRISP in order to query the CRISP Portal

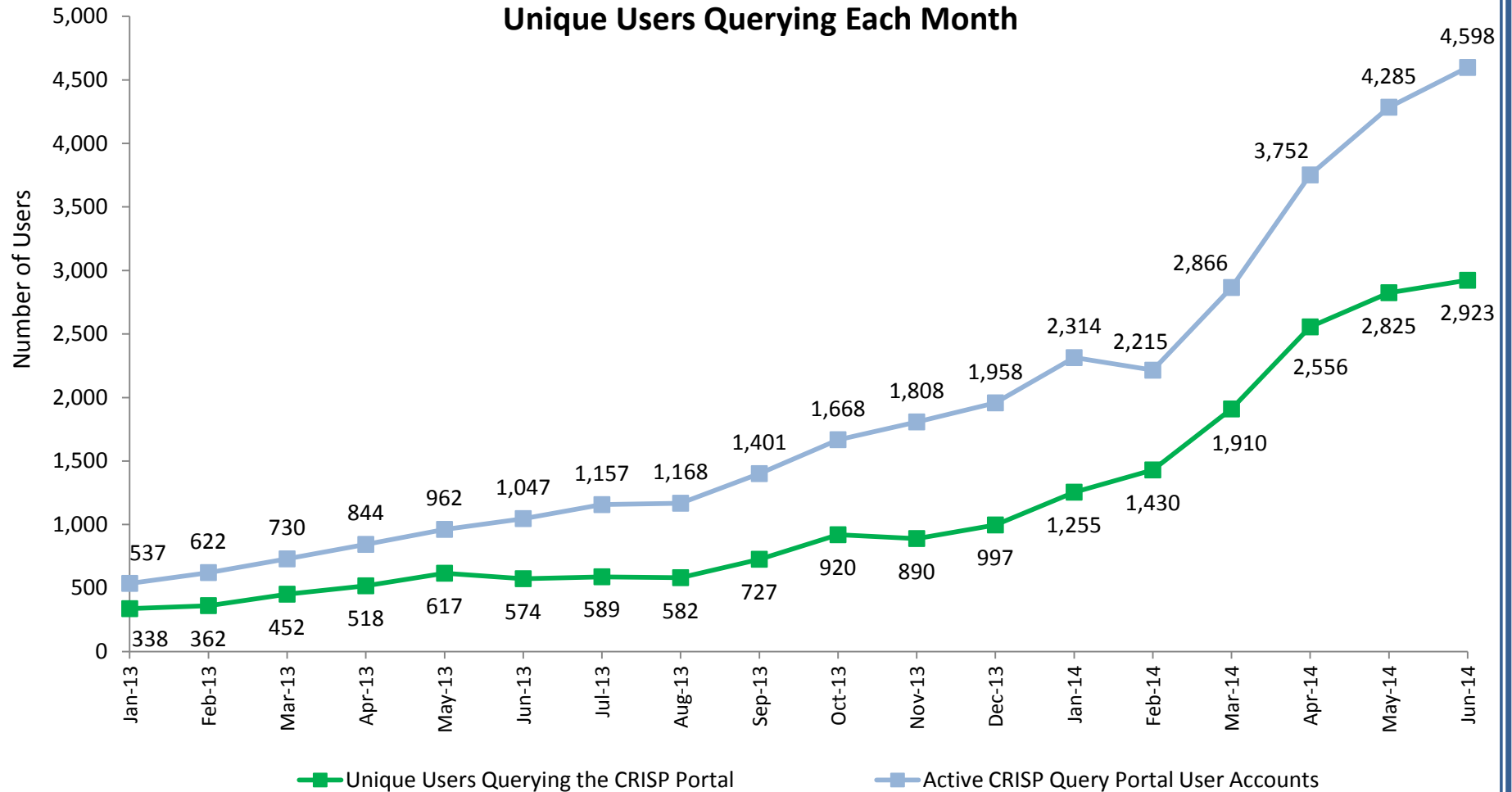
**Live:** An organization has completed the credentialing, legal, and training process and has at least one user approved to use the Portal

**Notes:**

Gap between organizations with a *Signed Participation Agreement* and those *Live* : some organizations only desire use of ENS and do not intend to use the portal

## CRISP Query Portal

### Active CRISP Query Portal User Accounts and Unique Users Querying Each Month



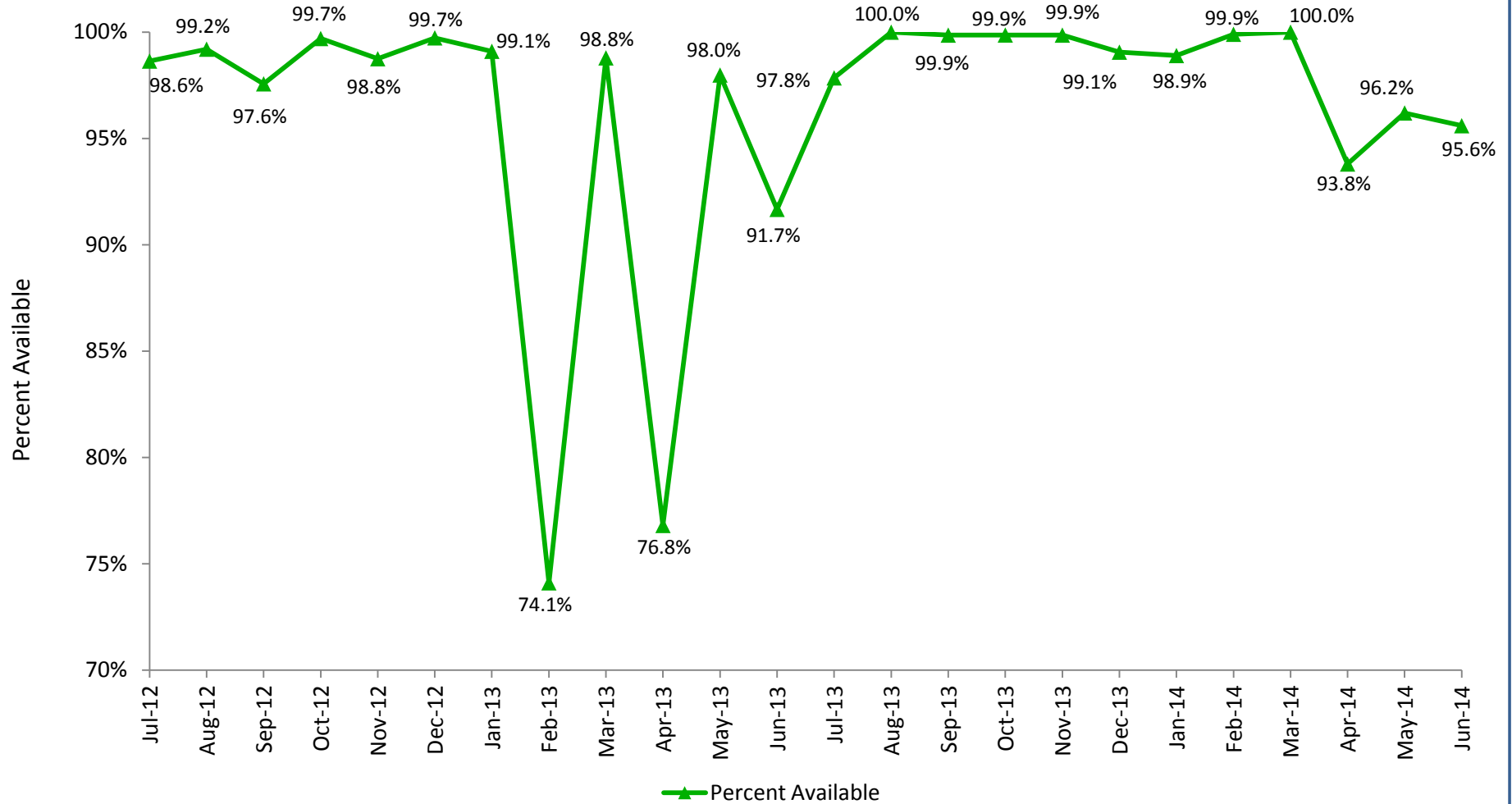
**Key Terms:**

**CRISP Portal:** A standalone web-based system that contains patient health information from Maryland hospitals and other providers connected to the HIE. Information available via the portal includes patient demographics, laboratory results, radiology reports, discharge summaries, operative and consult notes, and medication fill history

**Users:** Doctors, nurses, pharmacists and eligible medical staff whose identity and credentials have been authenticated and granted a CRISP login account

# CRISP Portal Availability

Average Portal Availability = 96.4%



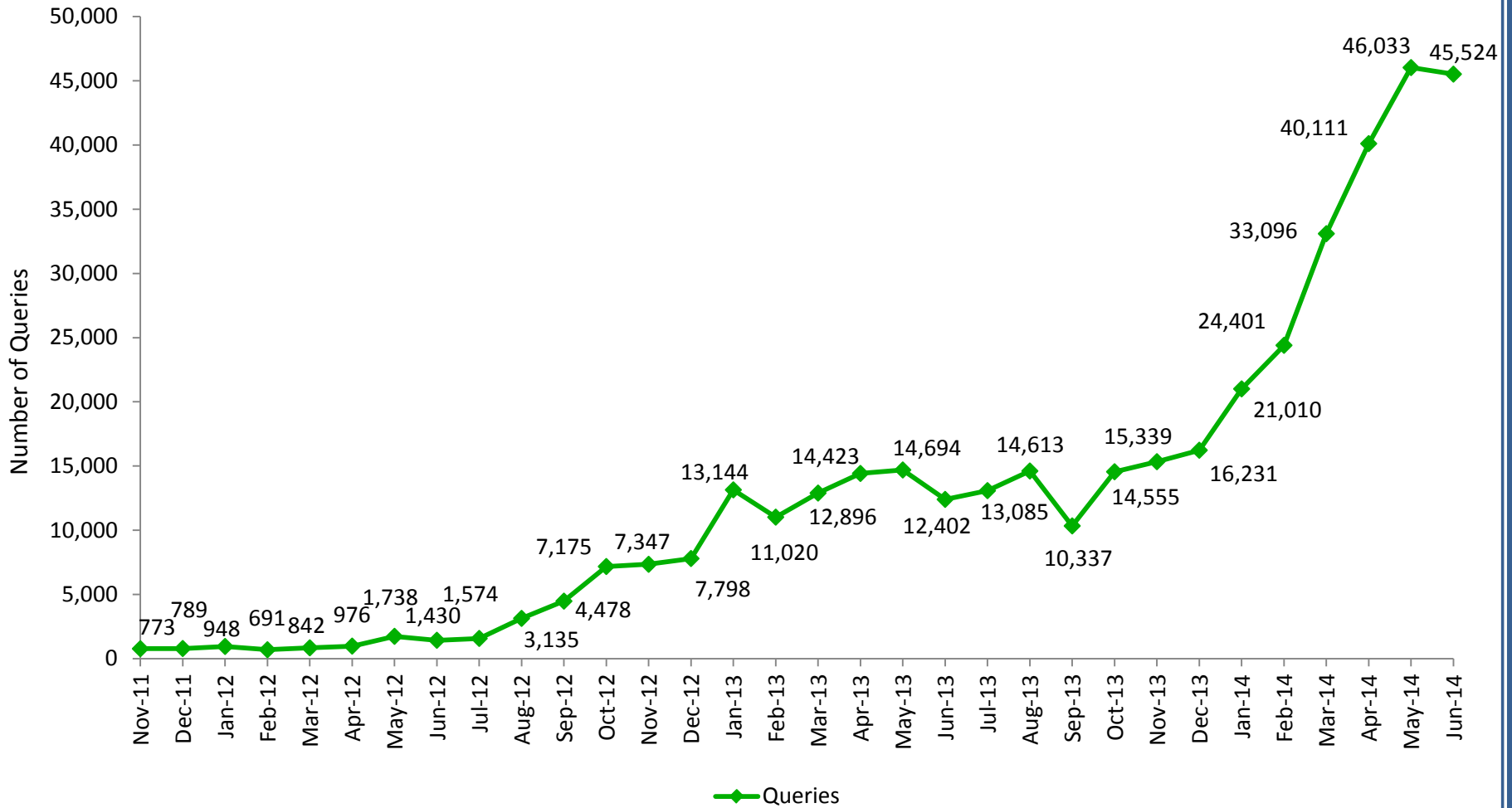
## Key Terms:

**CRISP Portal:** A standalone web-based system that contains patient health information from Maryland hospitals and other providers connected to the HIE. Information available via the portal includes patient demographics, laboratory results, radiology reports, discharge summaries, operative and consult notes, and medication fill history

**Portal Availability:** The percent of hours that the portal is live out of all possible hours in a month

**Percent Available:** The percent of hours that the portal is available during the month

## CRISP Portal Queries



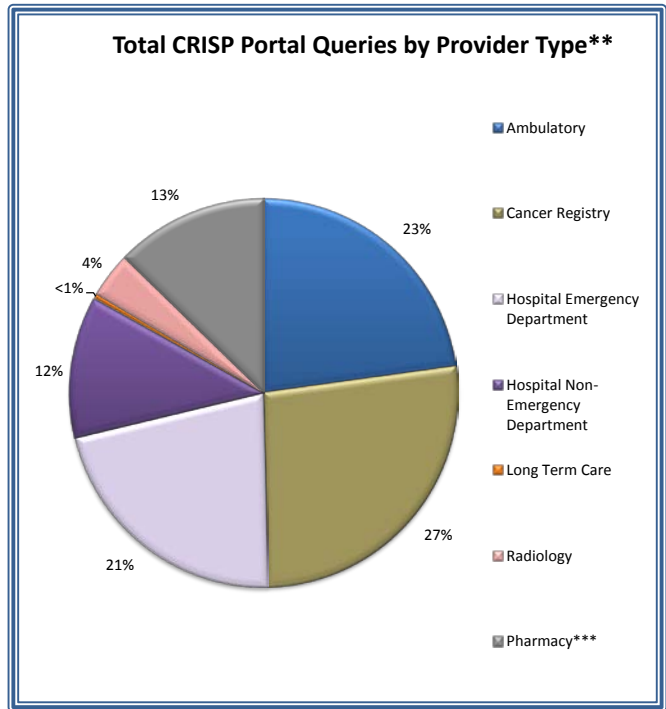
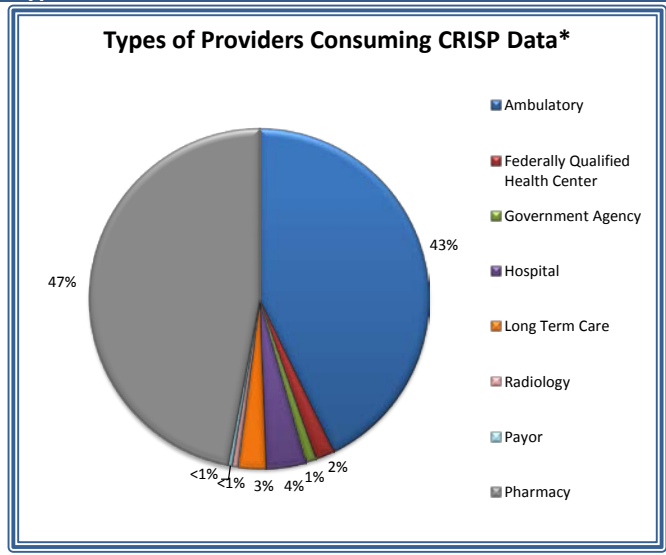
**Key Terms:**

**CRISP Portal:** The CRISP Portal is a standalone system available via the Internet that provides patient health information from Maryland hospitals and other providers who are connected to the HIE. Currently, select information is available via the portal, including patient demographics, laboratory results, radiology reports, discharge summaries, operative and consult notes, and medication fill history

**Queries:** Number of searches within the CRISP Portal per month

CRISP Portal Queries by Provider Type

Month	Provider Type									Total	
	Ambulatory	Cancer Registry	Hospital Emergency Department	Hospital Non-Emergency Department	Long Term Care	Radiology	Pharmacy***	Payor	Federally Qualified Health Center		
Apr-12	#	315	213	285	25	79	58	-	-	976	
Apr-12	%	32	22	29	3	8	6	-	-	100	
May-12	#	388	722	427	42	91	68	-	-	1,738	
May-12	%	22	42	25	2	5	4	-	-	100	
Jun-12	#	331	475	315	38	181	88	-	-	1,430	
Jun-12	%	23	33	22	3	13	6	-	-	100	
Jul-12	#	527	459	382	49	9	149	-	-	1,574	
Jul-12	%	33	29	24	3	1	9	-	-	100	
Aug-12	#	1,027	715	781	96	17	499	-	-	3,135	
Aug-12	%	33	23	25	3	1	16	-	-	100	
Sep-12	#	1,024	2,110	992	0	17	334	-	-	4,478	
Sep-12	%	23	47	22	0	0	7	-	-	100	
Oct-12	#	1,449	3,890	1,193	176	19	448	-	-	7,175	
Oct-12	%	20	54	17	2	0	6	-	-	100	
Nov-12	#	1,930	3,218	1,465	189	14	531	-	-	7,347	
Nov-12	%	26	44	20	3	0	7	-	-	100	
Dec-12	#	1,955	2,948	1,516	233	53	1,093	-	-	7,798	
Dec-12	%	25	38	19	3	1	14	-	-	100	
Jan-13	#	2,066	6,982	1,955	455	40	1,646	-	-	13,144	
Jan-13	%	16	53	15	3	0	13	-	-	100	
Feb-13	#	1,414	6,176	1,987	596	61	786	-	-	11,020	
Feb-13	%	13	56	18	5	1	7	-	-	100	
Mar-13	#	1,956	6,122	3,103	891	31	793	-	-	12,896	
Mar-13	%	15	47	24	7	0	6	-	-	100	
Apr-13	#	2,137	7,017	3,370	1,056	60	783	-	-	14,423	
Apr-13	%	15	49	23	7	0	5	-	-	100	
May-13	#	1,606	7,922	3,507	979	105	575	-	-	14,694	
May-13	%	11	54	24	7	1	4	-	-	100	
Jun-13	#	1,831	5,630	3,256	1,023	65	597	-	-	12,402	
Jun-13	%	15	45	26	8	1	5	-	-	100	
Jul-13	#	2,323	6,003	3,027	1,180	19	533	-	-	13,085	
Jul-13	%	18	46	23	9	0	4	-	-	100	
Aug-13	#	2,065	7,623	2,858	1,376	118	573	-	-	14,613	
Aug-13	%	14	52	20	9	1	4	-	-	100	
Sep-13	#	Data not available due to the change of the core infrastructure vendor									10,337
Sep-13	%	Data not available due to the change of the core infrastructure vendor									100
Oct-13	#	3,114	4,116	3,231	3,150	53	618	273	-	14,555	
Oct-13	%	21	28	22	22	0	4	2	-	100	
Nov-13	#	2,378	5,111	3,993	2,951	8	491	407	-	15,339	
Nov-13	%	16	33	26	19	0	3	3	-	100	
Dec-13	#	3,150	4,407	4,723	2,986	8	400	557	-	16,231	
Dec-13	%	19	27	29	18	0	2	3	-	100	
Jan-14	#	6,773	2,766	5,995	3,510	17	636	1,313	-	21,010	
Jan-14	%	32	13	29	17	0	3	6	-	100	
Feb-14	#	7,047	3,409	6,014	3,908	56	464	3,503	-	24,401	
Feb-14	%	29	14	25	16	0	2	14	-	100	
Mar-14	#	8,333	5,086	6,949	4,828	81	646	7,173	-	33,096	
Mar-14	%	25	15	21	15	0	2	22	-	100	
Apr-14	#	11,663	4,278	7,734	4,747	168	722	10,799	-	40,111	
Apr-14	%	29	11	19	12	0	2	27	-	100	
May-14	#	12,504	4,601	8,548	6,060	199	820	13,301	-	46,033	
May-14	%	27	10	19	13	0	2	29	-	100	
Jun-14	#	11,571	4,795	8,505	6,439	199	761	13,254	-	45,524	
Jun-14	%	25	11	19	14	0	2	29	-	100	
Total	#	90,878	106,795	86,111	46,983	1,768	15,113	50,580	-	408,565	
Monthly Average	#	3,495	4,107	3,312	1,807	68	581	5,620	-	15,132	



**Key Terms:**

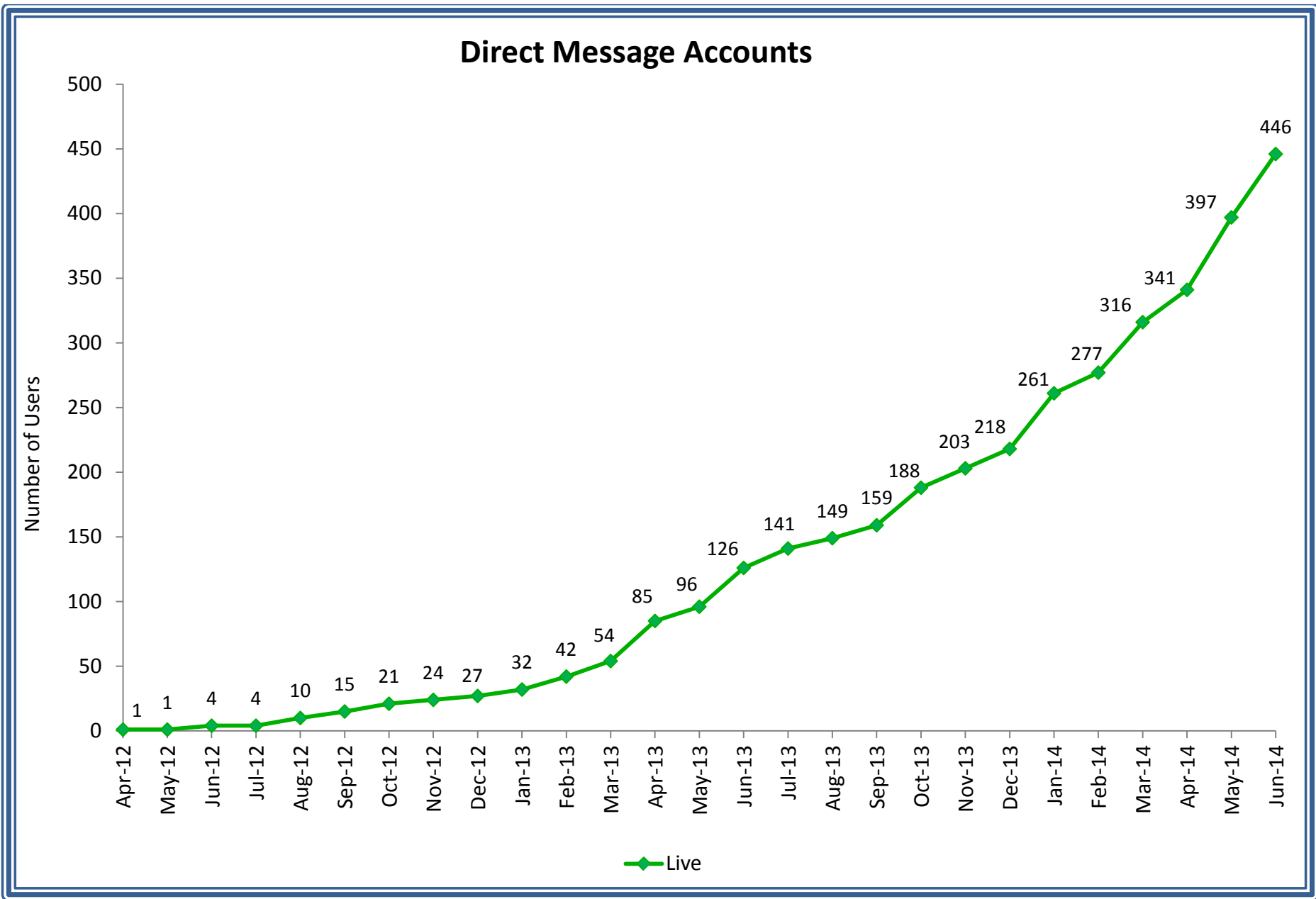
**CRISP Portal:** The CRISP Portal is a standalone system available via Internet that provides patient health information from Maryland hospitals and other providers connected to the health information exchange. Currently, select information is available via the portal, including patient demographics, laboratory results, radiology reports, discharge summaries, operative and consult notes, and medication fill history

**Queries:** Number of searches within the CRISP Portal per month

\*Includes access to CRISP Portal, encounter notification service (ENS), and/or Prescription Drug Monitoring Program (PDMP); details about providers consuming CRISP data are available on the *CRISP Portal, ENS & PDMP Adoption by Facility* table; PDMP users include prescribers (health care providers with the authorization to prescribe controlled dangerous substances), pharmacists (dispensers of controlled dangerous substances), and delegates (licensed health professionals with access to PDMP under an overseeing prescriber or pharmacist)

\*\* Includes CRISP Portal and PDMP queries

\*\*\*Pharmacy data available beginning in October 2013

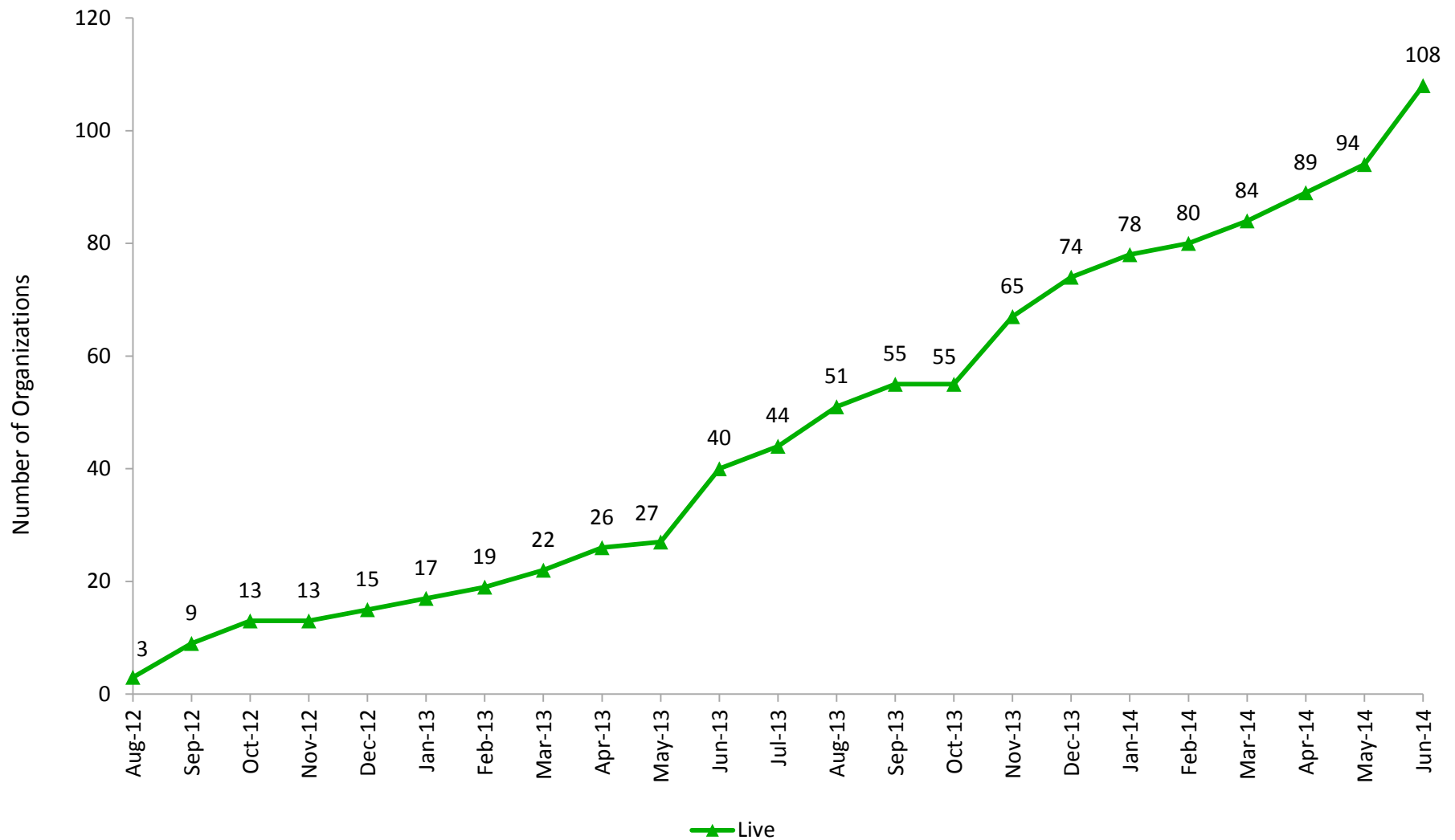


**Key Terms:**

**Direct Message Accounts:** A secure and encrypted e-mail service that supports electronic communication between health care providers

**Live:** Users live with a CRISP Direct Messaging account

## Encounter Notification Service Adoption



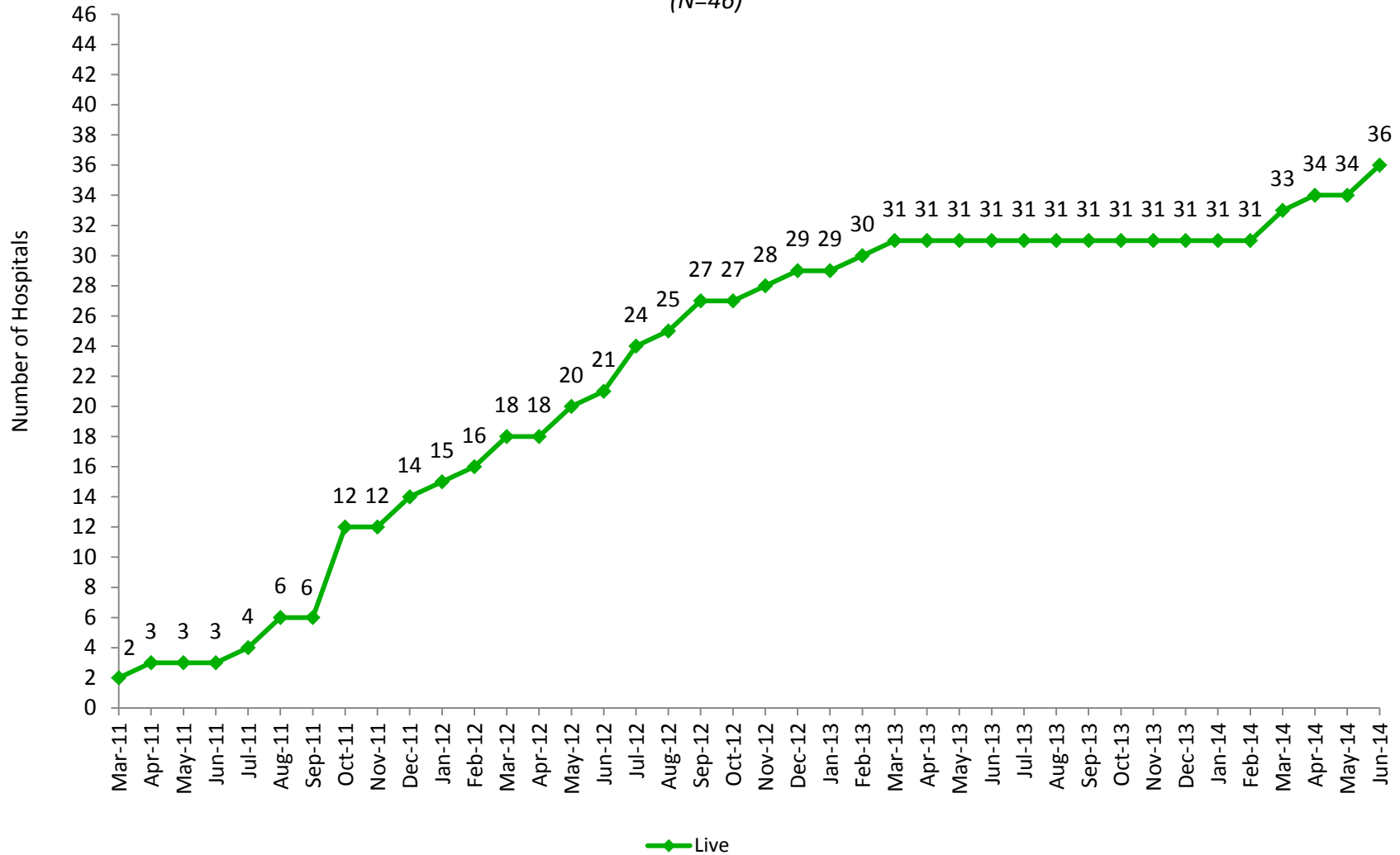
### **Key Terms:**

**Encounter Notification System (ENS):** A system that notifies providers when one of their patients has an encounter at a Maryland hospital, which includes patient admission, discharge, and transfer activity

**Live:** The number of organizations receiving ENS alerts

## Hospital Data Submission Laboratory Reports Live

(N=46)



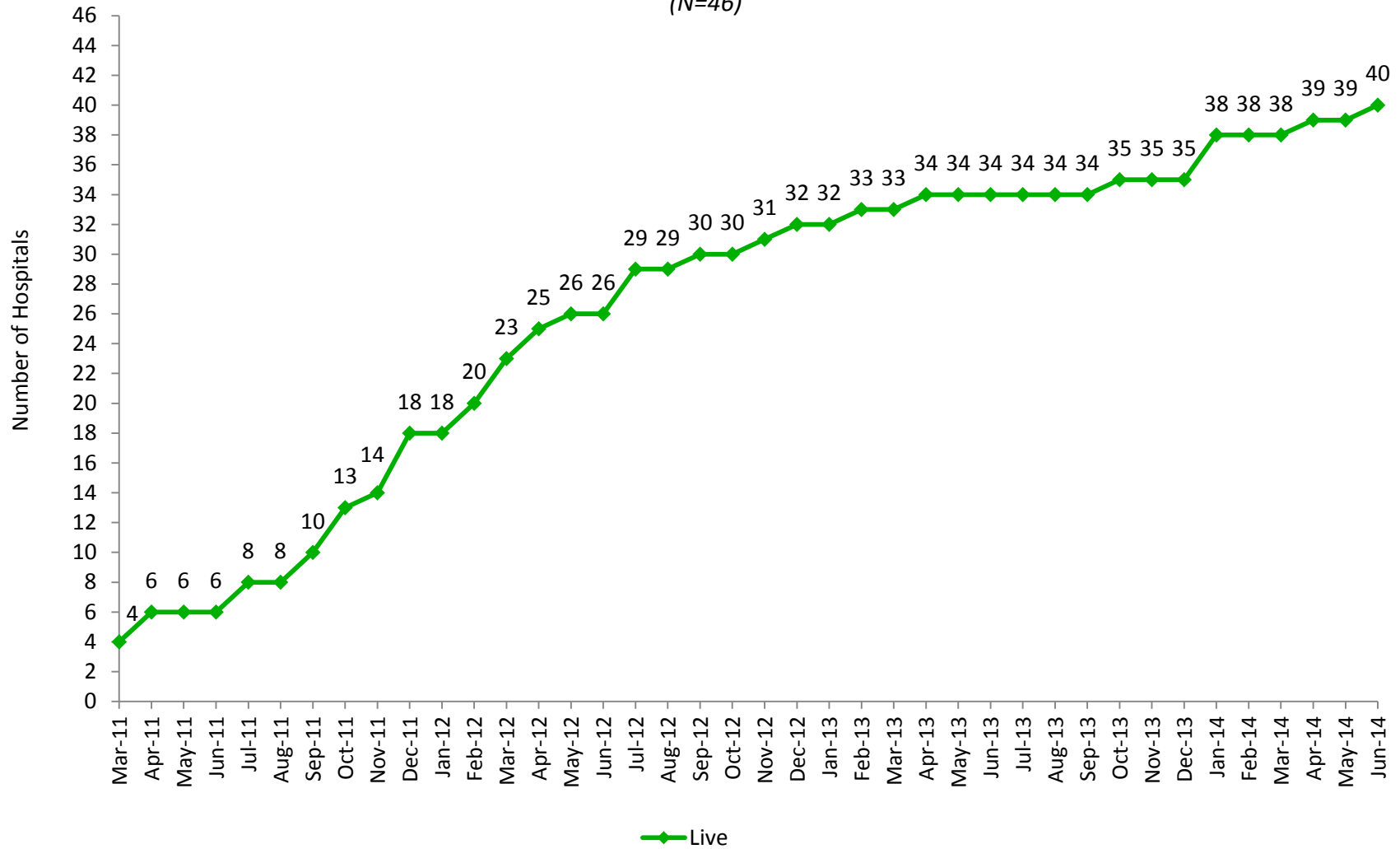
**Key Terms:**

**Live:** The number of hospitals using the laboratory documents exchange service

**N:** The number of acute care hospitals in Maryland

## Hospital Data Submission Radiology Reports Live

(N=46)



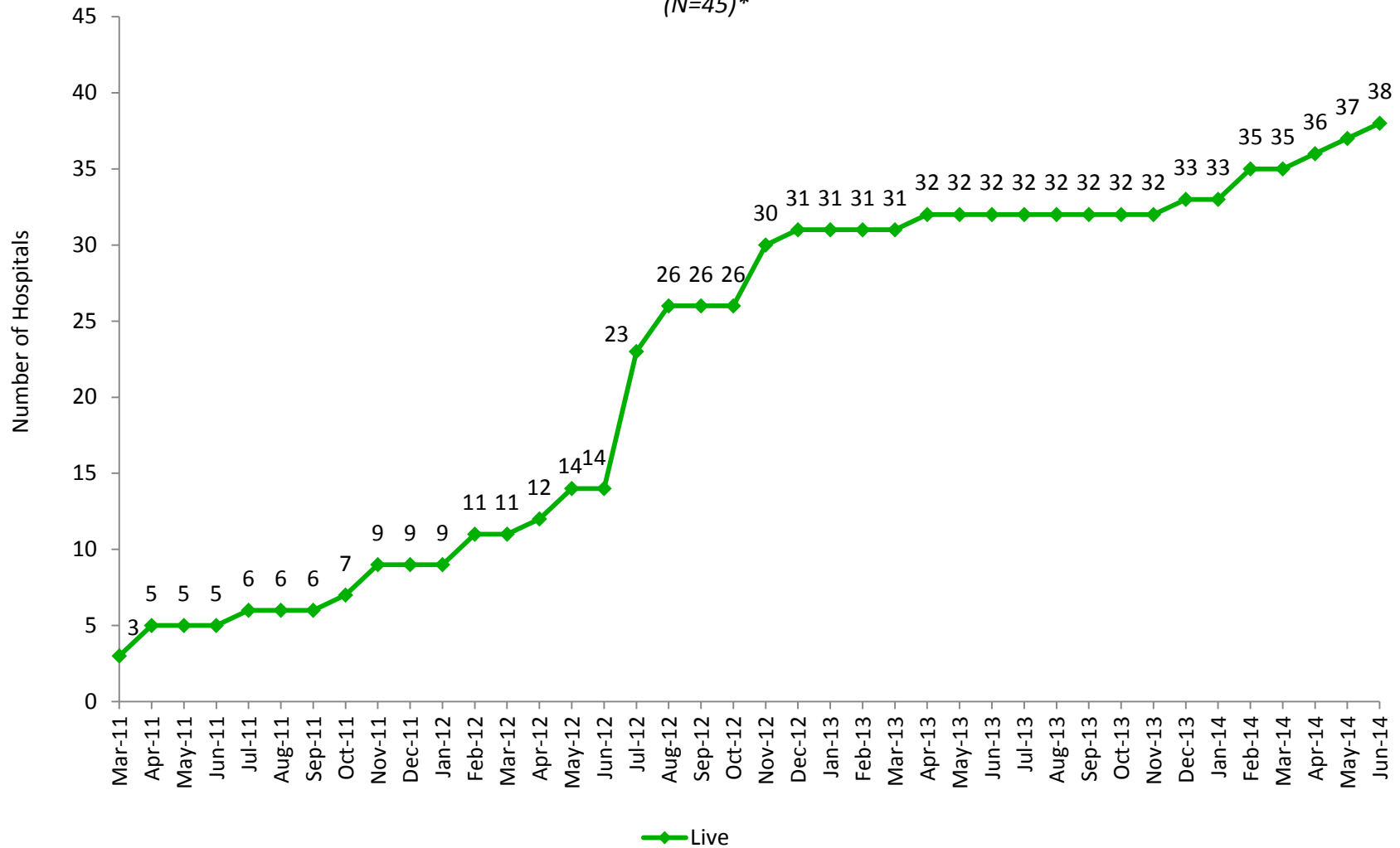
**Key Terms:**

**Live:** The number of hospitals using the radiology documents exchange service

**N:** The number of acute care hospitals in Maryland

## Hospital Data Submission Transcribed Reports Live

(N=45)\*



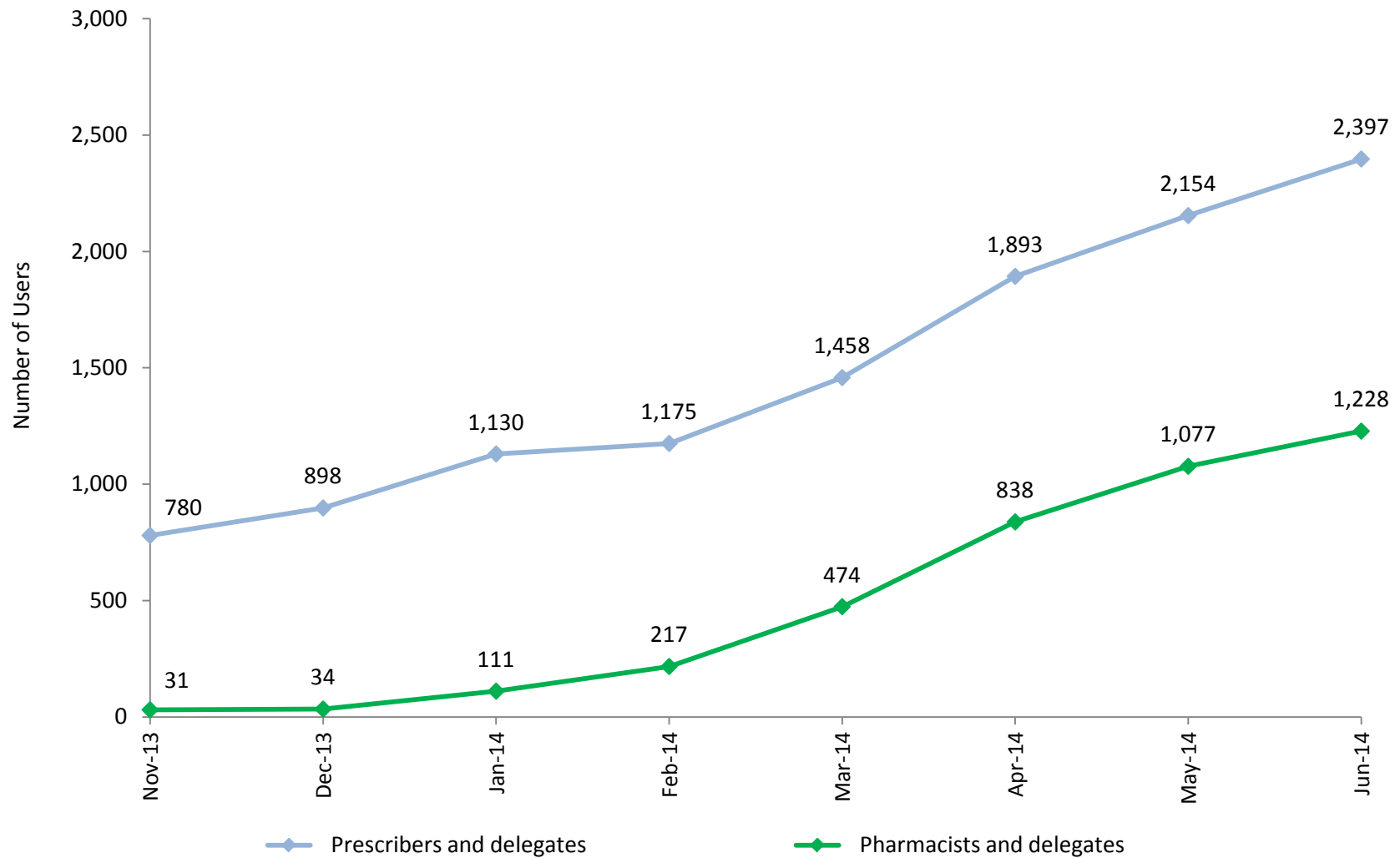
**Key Terms:**

**Live:** The number of hospitals using the transcribed exchange service

**N:** The number of acute care hospitals in Maryland

\*Garrett County Memorial Hospital has no plans to submit transcribed reports to CRISP

## Prescription Drug Monitoring Program



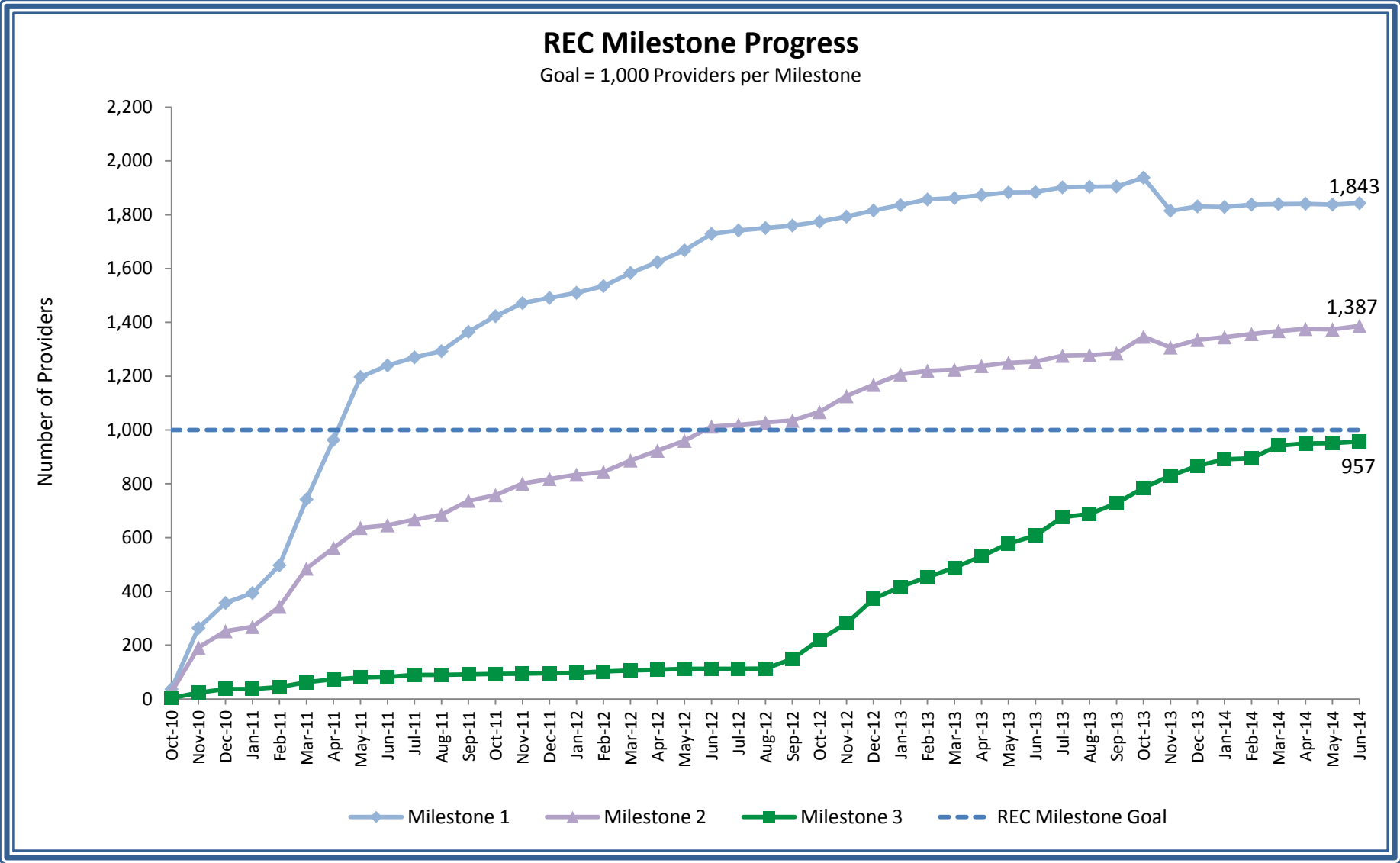
**Key Terms:**

**Prescription Drug Monitoring Program (PDMP):** Records of all dispensing of controlled dangerous substances (CDS) available in CRISP query portal that went live as a pilot in November 2013

**Prescribers:** Health care providers with the authorization to prescribe CDS

**Pharmacists:** Dispensers of CDS

**Delegates:** Licensed health professionals with access to PDMP under an overseeing prescriber or pharmacist



**Key Terms:**

**REC:** The Regional Extension Center (REC) provides technical assistance to priority primary care providers (PCPs) in adopting and using an electronic health record (EHR)

**Milestone 1:** A PCP that has signed a participation agreement with a management service organization

**Milestone 2:** A PCP that has adopted an EHR and is using certain functionalities of the system

**Milestone 3:** A PCP that has achieved meaningful use defined by the Centers for Medicare & Medicaid Services

**REC Milestone Goal:** The milestone goal was established by the Office of the National Coordinator for Health Information Technology

REC Progress						
Milestone	Provider did not have an EHR at sign up with the program		Provider had an EHR when signed up with the program		Total	
	#	%	#	%	#	%
Milestone 1	738	40	1,105	60	1,843	184
Milestone 2	692	50	695	50	1,387	139
Milestone 3	455	48	502	52	957	96

**Key Terms:**

**REC:** The Regional Extension Center (REC) provides technical assistance to priority primary care providers (PCPs) in adopting and using an electronic health record (EHR)

**Milestone 1:** A PCP that has signed a participation agreement with a management service organization

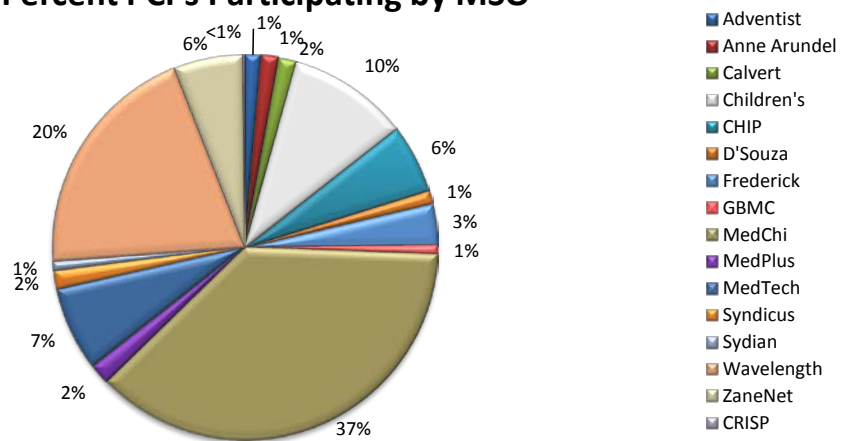
**Milestone 2:** A PCP that has adopted an EHR and is using certain functionalities of the system

**Milestone 3:** A PCP that has achieved meaningful use defined by the Centers for Medicare & Medicaid Services

**REC Milestone Goal:** The milestone goal was established by the Office of the National Coordinator for Health

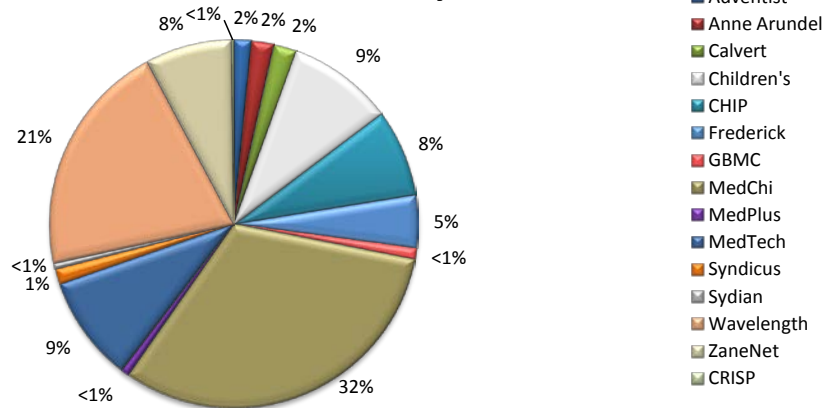
## Maryland REC Progress - Milestone 1 Percent PCPs Participating by MSO

Total PCPs signed up with an MSO: 1,843



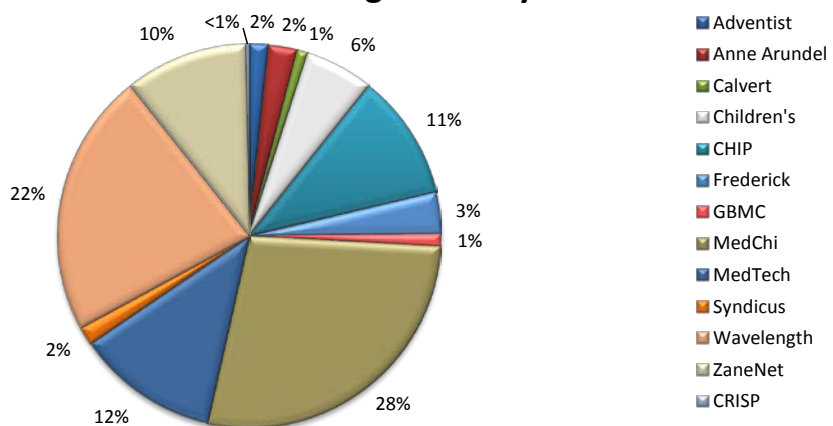
## Maryland REC Progress - Milestone 2 Percent PCPs Live on an EHR by MSO

Total PCPs live on an EHR: 1,387



## Maryland REC Progress - Milestone 3 Percent PCPs Achieved Meaningful Use by MSO

Total PCPs achieved meaningful use: 957



**Key Terms:**

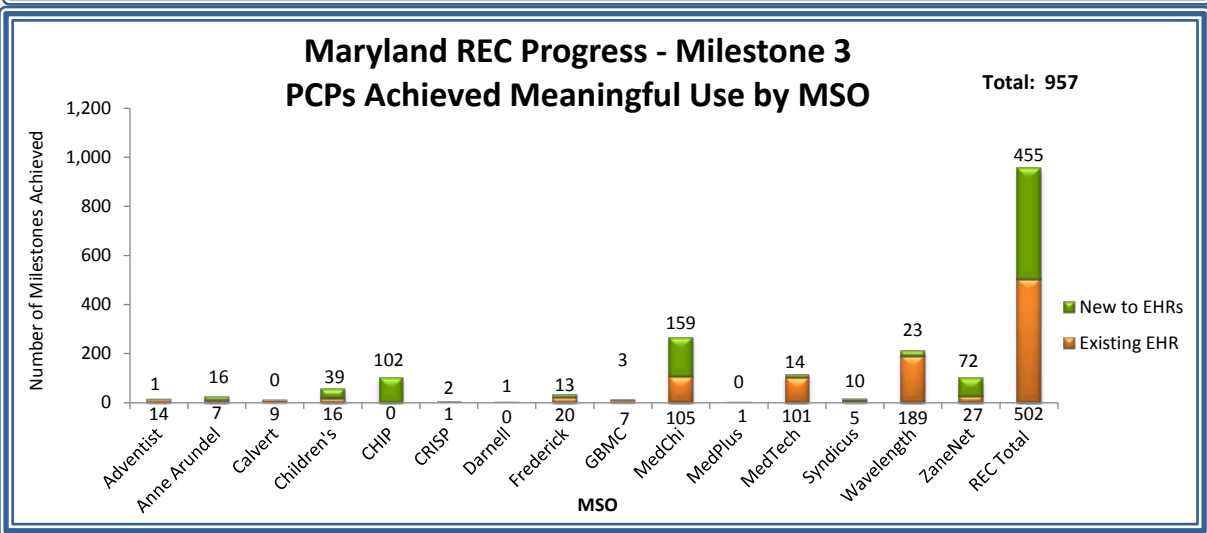
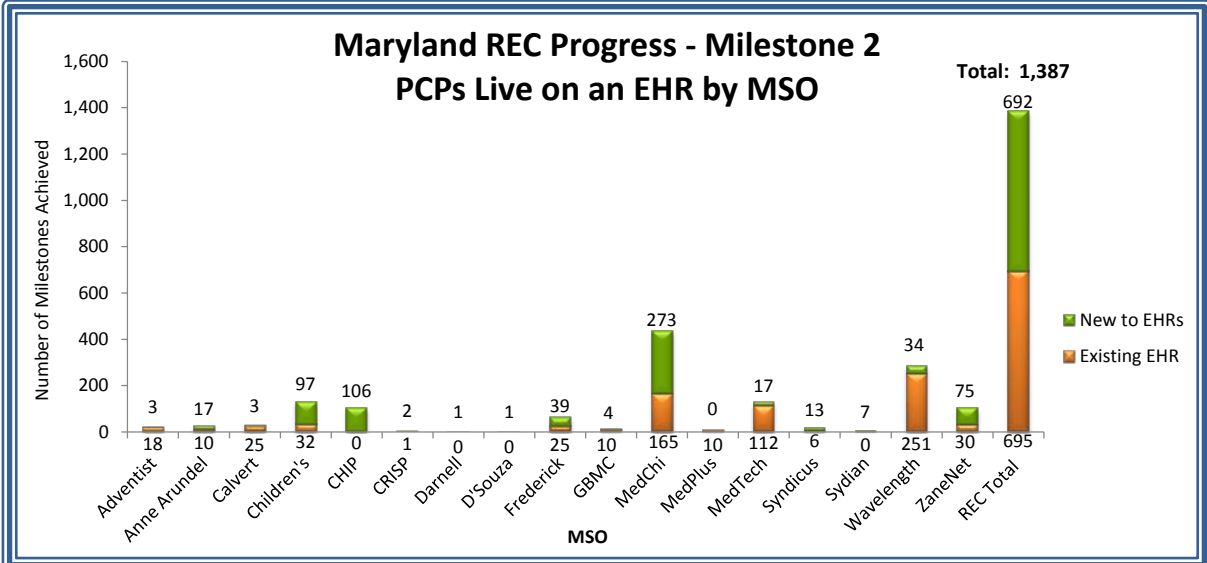
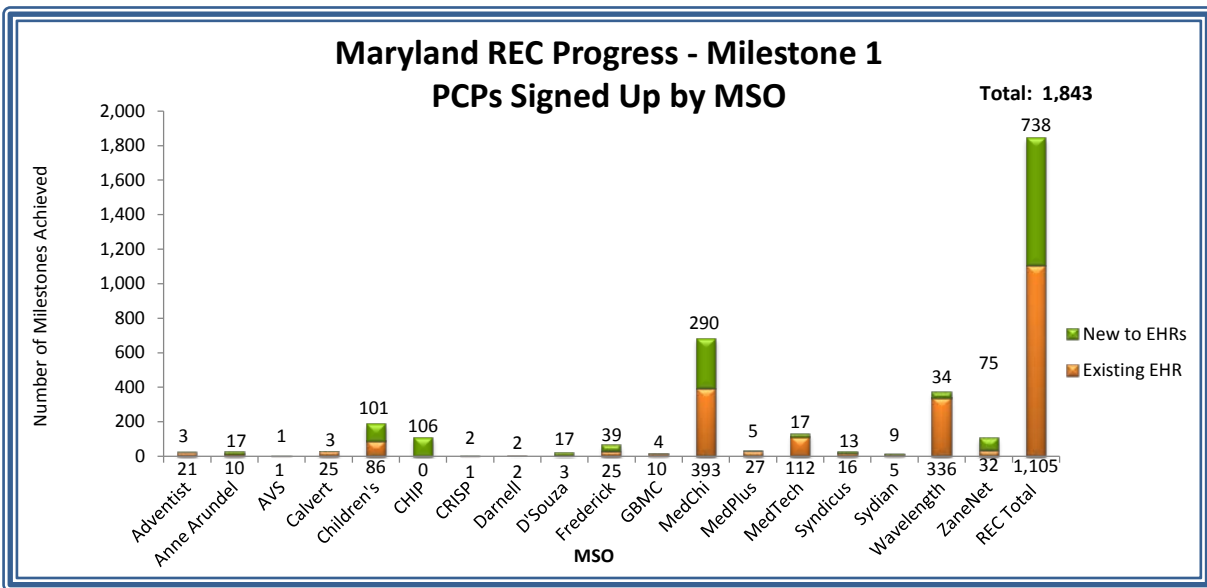
**REC:** The Regional Extension Center (REC) provides technical assistance to priority primary care providers (PCPs) in adopting and using an electronic health record (EHR)

**Milestone 1:** A PCP that has signed a participation agreement with a management service organization (MSO)

**Milestone 2:** A PCP that has adopted an EHR and is using certain functionalities of the system

**Milestone 3:** A PCP that has achieved meaningful use defined by the Centers for Medicare & Medicaid Services

**Primary care provider:** Primary-care providers in individual and small group practices (fewer than 10 physicians and/or other health care professionals with prescriptive privileges) primarily focused on primary care; and physicians, physician assistants, or nurse practitioners who provide primary care services in public and critical access hospitals, community health centers, rural health clinics, and in other settings that predominantly serve uninsured, underinsured, and medically underserved populations



**Key Terms:**

**REC:** The Regional Extension Center (REC) provides technical assistance to priority primary care providers (PCPs) in adopting and using an electronic health record (EHR)

**Milestone 1:** A PCP that has signed a participation agreement with a management service organization (MSO)

**Milestone 2:** A PCP that has adopted an EHR and is using certain functionalities of the system

**Milestone 3:** A PCP that has achieved meaningful use defined by the Centers for Medicare & Medicaid Services

**Primary care provider:** Primary-care providers in individual and small group practices (fewer than 10 physicians and/or other health care professionals with prescriptive privileges) primarily focused on primary care; and physicians, physician assistants, or nurse practitioners who provide primary care services in public and critical access hospitals, community health centers, rural health clinics, and in other settings that predominantly serve uninsured, underinsured, and medically underserved populations

## Hospital Data Submission and Use

Count	Hospital	Current Status of Data Submission			Use of Services		
		Laboratory Reports	Radiology Reports	Transcribed Documents	Portal Live	Portal - Single Sign On*	ENS
1	Anne Arundel Medical Center	Mar-12	Mar-12	45	Jul-12	10	Sep-13
2	Atlantic General Hospital	Jun-11	Jun-11	Jun-11	Mar-12	10	22
3	Baltimore Washington Medical Center	Apr-14	Jan-14	45	Mar-12	10	22
4	Bon Secours Baltimore Health System	Feb-13	Feb-13	Feb-14	Jan-13	10	Jun-14
5	Calvert Memorial Hospital	Dec-12	Dec-12	Dec-12	Feb-13	10	22
6	Carroll Hospital Center	May-12	Apr-12	Apr-12	Jul-12	10	22
7	Doctors Community Hospital	Sep-12	Sep-13	Dec-13	Apr-13	10	Jun-13
8	Edward McCready Memorial Hospital	Aug-12	45	45	Feb-14	10	22
9	Fort Washington Medical Center	Sep-12	Mar-12	May-12	Sep-12	10	22
10	Frederick Memorial Hospital	Mar-12	Dec-11	45	Jul-12	10	22
11	Garrett County Memorial Hospital	Jun-11	Apr-12		Jan-14	10	22
12	Greater Baltimore Medical Center	Nov-12	Sep-12	Sep-12	Jun-12	10	22
13	Harford Memorial Hospital	Jul-12	Jul-12	Jul-12	Aug-12	10	22
14	Holy Cross Hospital	Sep-10	Sep-10	Sep-10	Dec-11	10	22
15	Howard County General Hospital	Feb-12	Nov-11	Nov-11	Mar-12	10	22
16	Johns Hopkins Bayview Medical Center	45	Feb-12	Jul-12	Apr-12	10	Mar-14
17	Johns Hopkins Hospital	45	Dec-11	May-12	Jul-12	10	22
18	Laurel Regional Hospital	45	45	Jul-12	Sep-13	10	22
19	MedStar Franklin Square Medical Center	Oct-11	Oct-11	Nov-12	Jul-12	Apr-13	Jan-14
20	MedStar Good Samaritan Hospital	Oct-11	Oct-11	Nov-12	Jun-12	Apr-13	22
21	MedStar Harbor Hospital	Oct-11	Sep-12	Nov-12	Mar-12	Apr-13	Aug-12
22	MedStar Montgomery Medical Center	Mar-13	Apr-11	Apr-11	Dec-11	Apr-13	22
23	MedStar Southern Maryland Hospital Center	45	Jul-11	Nov-11	Feb-13	10	22
24	MedStar St. Mary's Hospital	Jun-12	Mar-12	Dec-12	Jun-13	10	22
25	MedStar Union Memorial Hospital	Oct-10	Oct-10	Nov-12	May-12	Apr-13	22
26	Mercy Medical Center	45	Nov-12	May-14	Aug-12	10	Jun-14
27	Meritus Medical Center	Jul-12	Jul-12	Jul-12	Sep-12	10	22
28	Northwest Hospital Center	Dec-11	Dec-11	Aug-12	Sep-12	10	Jun-14
29	Peninsula Regional Medical Center	Jun-14	Jun-14	Jun-14	Sep-13	10	22
30	Prince George's Hospital Center	45	45	Jul-12	Apr-13	10	22
31	Shady Grove Adventist Hospital	Nov-11	Dec-10	Dec-11	Dec-11	10	Sep-13
32	Sinai Hospital	Dec-11	Dec-11	Aug-12	Sep-12	10	Jun-14
33	St. Agnes Hospital	Feb-12	Feb-12	Feb-12	Dec-12	10	22
34	Suburban Hospital	Oct-10	Oct-10	Oct-10	Sep-11	10	22
35	Union Hospital Cecil County	Aug-11	Sep-11	Sep-11	Sep-12	10	22
36	University of Maryland Charles Regional Medical Center	Jun-14	Apr-14	Apr-14	Jan-13	10	22
37	University of Maryland Medical Center	Mar-14	Jan-14	Jul-12	Jul-12	10	22
38	University of Maryland Medical Center Midtown Campus	45	Apr-13	Apr-13	Feb-13	10	Jun-14
39	University of Maryland Rehabilitation & Orthopedic Institute	Mar-14	Jan-14	Jul-12	Feb-14	10	22
40	University of Maryland Shore Medical Center at Chestertown	45	45	45	Mar-13	10	22
41	University of Maryland Shore Medical Center at Dorchester	45	45	45	Jan-14	10	22
42	University of Maryland Shore Medical Center at Easton	45	45	45	Oct-13	10	22
43	University of Maryland St. Joseph Medical Center	May-12	May-12	Feb-14	May-12	10	Aug-12
44	University of Maryland Upper Chesapeake Medical Center	Jul-12	Jul-12	Jul-12	Aug-12	10	22
45	Washington Adventist Hospital	Nov-11	Dec-10	Dec-10	Apr-11	10	22
46	Western Maryland Health System	Mar-11	Mar-11	Feb-12	Jan-11	10	22

Key	Total Number of Hospitals in Current Status			Total Number of Hospitals Using Services		
	Laboratory Reports	Radiology Reports	Transcribed Documents	Portal	Portal - SSO	ENS
Not Live (months in current status)	10	6	7	0	41	34
Data Quality Assurance & Monitoring (months in current status) <i>Hospitals standardizing and mapping data for transmission</i>	0	0	0	N/A	N/A	N/A
Live <i>The number of hospitals that have successfully completed the above listed activities and the date the hospital went live</i>	36	40	38	46	5	12
No plans to provide data feed	0	0	1	N/A	N/A	N/A

\*Note: Pilot for Single Sign On to Portal launched in April 2013 and offered to all hospitals starting in September 2013

## CRISP Portal, ENS & PDMP Adoption by Facility

Count	Organization	Type	Portal Participation Agreement	Training*	Portal Live*	ENS Live*	PDMP Access
1	AAMCs Community Health Center	Ambulatory	Anne Arundel Medical Center	May-14	May-14		
2	AAMG Kent Island Urgent Care	Ambulatory	Sep-11	Feb-14	Feb-14		Feb-14
3	Aberdeen Family Practice	Ambulatory		Jan-14			Jan-14
4	Absolute Care of Baltimore	Ambulatory	Feb-14	Feb-14	Feb-14	Apr-14	Feb-14
5	Access Carroll	Ambulatory		Feb-14			Feb-14
6	Access Family Practice	Ambulatory		Jan-14			Jan-14
7	Accokeek Drug and Health Care Inc.	Pharmacy		Nov-13			Nov-13
8	Achor Care Pharmacy	Pharmacy		Jan-14			Jan-14
9	Addiction Treatment Services	Ambulatory		Apr-14			Apr-14
10	Adult and Pediatric Clinic, P.C.	Ambulatory		May-14			May-14
11	Advanced Diagnostic Radiology	Radiology	Mar-12				
12	Advanced Healthcare Center, LLC	Ambulatory		Jun-14			Jun-14
13	Advanced Internal Medicine	Ambulatory	Jan-13	Jan-13	Feb-14		Feb-14
14	Advanced Interventional Pain & Sports Medicine Center	Ambulatory		Apr-14			Apr-14
15	Advanced Medical Care	Ambulatory	Apr-14	Apr-14	Apr-14		Apr-14
16	Advanced Pain Medicine Institute	Ambulatory		Mar-14			Apr-14
17	Advanced Primary and Geriatric Care	Ambulatory	Feb-14	Jun-14			Jun-14
18	Advanced Radiology	Radiology	Sep-10	Mar-12	Mar-12		
19	Advanced Spine and Pain	Ambulatory		Jan-14			Jan-14
20	Advanced Surgery	Ambulatory		Jun-14			Jun-14
21	ADVANIX Medicare	Ambulatory		Jun-14			Jun-14
22	Adventist ACO	Ambulatory	Nov-10			Jun-14	
23	Adventist Healthcare	Health System	Nov-10	Oct-12			
24	Adventist Medical Group - Medical Faculty Associates	Ambulatory	Adventist Healthcare	Feb-14	Feb-14		Feb-14
25	AGHS Berlin Primary Care	Ambulatory	Atlantic General Hospital	Jun-13	Jun-13		
26	AGHS Townsend Medical Center	Ambulatory	Atlantic General Hospital				
27	Airpark Primary Care	Ambulatory	Nov-13	Dec-13	Dec-13		Dec-13
28	All Day Medical Care Clinic	Ambulatory	Aug-13	Sep-13	Sep-13		Mar-14
29	All Walks of Life	Ambulatory	Sep-13	Apr-14	Apr-14		Apr-14
30	Allan J. Chircus, M.D.	Ambulatory		Apr-14			Apr-14
31	Allegany County Health Department	Government Agency		Apr-14			Apr-14
32	Allegany Health Nursing and Rehabilitation	Ambulatory	Mar-12				
33	Allegheny Plastic Surgery	Ambulatory		Jun-14			Jun-14
34	Allegheny Surgical Associates	Ambulatory	Sep-11				
35	Allergy & Asthma Associates	Ambulatory	Apr-14	Apr-14	Jun-14		Apr-14
36	Alliance Inc.	Ambulatory	Sep-13	Mar-14	Mar-14		Mar-14
37	Alternative Primary Care	Ambulatory	May-12				
38	Altmed Medical Center	Ambulatory		Jan-14			Jan-14
39	Ambulatory Care Pharmacy - Medical Center	Pharmacy		Nov-13			Nov-13
40	Ambulatory Care Pharmacy - Shady Grove	Pharmacy		Oct-13			Nov-13
41	AME Pharmacy, LLC	Pharmacy		Apr-14			Apr-14
42	American Health Associates Laboratory	Laboratory	Sep-13				
43	American Radiology	Radiology	Sep-10	Dec-12	Dec-12		
44	American Spine	Ambulatory		Dec-13			Dec-13
45	Amerigroup	Payor	Nov-12			Feb-13	
46	Andrew T. Gergely, M.D. & Associates, L.L.C.	Ambulatory		Apr-14			Apr-14
47	Annapolis Center for Integrative Medicine	Ambulatory	Sep-13	Aug-13	Sep-13		
48	Annapolis Internal Medicine	Ambulatory	Jul-13	Dec-13	Dec-13		Dec-13
49	Annapolis Neurology Associates	Ambulatory	Nov-13	Nov-13	Nov-13		Nov-13
50	Annapolis Primary Care	Ambulatory	Sep-13	Aug-13	May-14		
51	Annapolis Rheumatology Associates	Ambulatory		Apr-14			Apr-14
52	Anne Arundel County Health Department	Government Agency	Aug-13	Apr-14	Apr-14		Apr-14
53	Anne Arundel HealthCare Enterprises, Inc.	Ambulatory	Sep-11	Jun-13	Jun-13		
54	Anne Arundel Medical Center	Hospital	Sep-11	Jul-12	Jul-12	Sep-13	Nov-13
55	Anne Arundel Medical Center Cancer Registry	Ambulatory	Anne Arundel Medical Center			Jun-13	
56	Anne Arundel Medical Center Employee Pharmacy	Pharmacy		Jun-14			Jun-14
57	Anne Arundel Physician Group	Ambulatory	Jul-13	Jun-14			Jun-14

## CRISP Portal, ENS & PDMP Adoption by Facility

Count	Organization	Type	Portal Participation Agreement	Training*	Portal Live*	ENS Live*	PDMP Access
58	Anne Arundel Urology	Ambulatory	Apr-13	Mar-13	Apr-13		Nov-13
59	Anne L. Grady, DO PA	Ambulatory	May-14	May-14	May-14		May-14
60	Anthony & Banerjee MD PA	Ambulatory	Feb-13	Feb-13	Mar-13		
61	Apple Discount Drugs	Pharmacy	Oct-12	Oct-12	Oct-12		Nov-13
62	Apple Discount Drugs #2	Pharmacy		May-14			May-14
63	Apple Discount Drugs #4	Pharmacy		Jan-14			Jan-14
64	Apple Infusion	Pharmacy		Jan-14			Jan-14
65	Arain A Waseem MD PA FICS	Ambulatory		May-14			May-14
66	Arcola Health and Rehab Center	Long Term Care	Dec-11	Mar-12			
67	Arnold Professional Pharmacy	Pharmacy		Jan-14			Jan-14
68	Arthritis & Rheumatism Associates	Ambulatory	Feb-12	Mar-12	Mar-12		Jan-14
69	Arthritis Care Specialists of Maryland	Ambulatory		Jun-14			Jun-14
70	Arundel Lodge	Ambulatory	Aug-13	Nov-13	Nov-13	Nov-13	Apr-14
71	Arundel Medical Group, Inc.	Ambulatory		Apr-14			Apr-14
72	Arundel Mills Pharmacy	Pharmacy		Jan-14			Jan-14
73	Arundel Neurology	Ambulatory		Apr-14			Apr-14
74	Arundel Pharmacy	Pharmacy		Feb-14			Feb-14
75	Asbury Communities- Asbury Methodist Village	Long Term Care	The Asbury Group	Jun-14	Jun-14		
76	Ashvin J Patel MD PA	Ambulatory	Jun-14	Jun-14			Jun-14
77	Aspen Day Treatment	Ambulatory		Apr-14			Apr-14
78	Aspire Wellness Center, Inc	Ambulatory		Apr-14			Apr-14
79	Aspire Wellness Center, Inc.	Ambulatory	Jun-14				
80	Assisted Recovery Centers of America- Mid Atlantic	Ambulatory		Jun-14			Jun-14
81	Associates in Cardiology	Ambulatory	Aug-11	Dec-11	Sep-13		Nov-13
82	Atlantic General Hospital	Hospital	Aug-11	Mar-12	Mar-12		
83	Austin Pharmacy & Medical Supplies	Pharmacy		Feb-14			Feb-14
84	Avalon Professional Pharmacy	Pharmacy		Feb-14			Feb-14
85	Bala Family Practice	Ambulatory		Jun-14			Jun-14
86	Baltimore Heart Associates, PA	Ambulatory	Jun-14	Jun-14			Jun-14
87	Baltimore Highlands Pharmacy	Pharmacy		Mar-14			Mar-14
88	Baltimore Medical System, Inc.	FQHC	Oct-13	Oct-13	Oct-13	Nov-13	Nov-13
89	Baltimore Medical Systems- Belair - Edison Family Health	Ambulatory	Baltimore Medical System, Inc.	Mar-14	Mar-14		Mar-14
90	Baltimore Medical Systems Inc - Matilda Koval Medical Center	Pharmacy	Baltimore Medical System, Inc.	Apr-14			Apr-14
91	Baltimore Medical Systems Inc. - Fleet Street	Ambulatory	Baltimore Medical System, Inc.	Mar-14	Mar-14		Mar-14
92	Baltimore Neurosurgery and Spine Center	Ambulatory		Feb-14			Mar-14
93	Baltimore Pain Relief Center - White Marsh	Ambulatory	Apr-14	Apr-14			Apr-14
94	Baltimore VAMC, Perry Point	Government Agency		Jun-14			Jun-14
95	Baltimore VAMCS, Loch Raven	Hospital		Apr-14			Apr-14
96	Baltimore Washington Medical Center	Hospital	University of Maryland Medical System	Mar-12	Mar-12		Nov-13
97	Bay Area Orthopedics	Ambulatory		Mar-14			Mar-14
98	Bay Crossing Family Medicine	Ambulatory	Apr-13	May-13	May-13	Jun-13	Dec-13
99	Bay Hundred Medical Center	FQHC	Dec-13	Dec-13	Dec-13		
100	Bayside Family Practice, LLC	Ambulatory	Nov-13	Feb-14	Feb-14	Dec-13	Feb-14
101	Bayside Internal Medicine	Ambulatory		Feb-14			Feb-14
102	Bayside Primary Care	Ambulatory		Apr-14			Apr-14
103	Bayview Care Center	Long Term Care	Aug-11	Apr-12	Apr-12		
104	Bayview Pharmacy	Pharmacy		Apr-14			Apr-14
105	Bel Air Center for Addictions	Ambulatory		Jan-14			Jan-14
106	Benjamin Lee MD	Ambulatory		Apr-14			Apr-14
107	Bergand Group	Ambulatory		Mar-14			Mar-14
108	Bethesda Medical Associates	Ambulatory	Jun-11	Dec-11	Jan-12		Jan-14
109	Betty Toloria Braswell MD	Ambulatory		Jan-14			Jan-14
110	BH Health Services, Inc.	Ambulatory	Apr-13	May-13	May-13		Nov-13
111	Bich T. Duong MD	Ambulatory		Apr-14			Apr-14
112	BioReference Laboratories	Laboratory	Mar-13				
113	Blakeslee and Eichelberger, LLC	Ambulatory		Apr-14			Apr-14
114	Blue Heron Medical Group, LLC	Ambulatory		Apr-14			Apr-14
115	Bon Secours Hospital	Hospital	Jan-12	Jan-13	Jan-13	Jun-14	Nov-13

## CRISP Portal, ENS & PDMP Adoption by Facility

Count	Organization	Type	Portal Participation Agreement	Training*	Portal Live*	ENS Live*	PDMP Access
116	Bose Medical Group	Ambulatory	Mercy Medical Center			May-14	
117	Bowie Health Center	Ambulatory	Dimensions Health	Aug-13	Jul-13		Nov-13
118	Bowie Internal Medicine	Ambulatory	May-12	May-12	May-12		
119	Boyd & Fulford Pharmacy	Pharmacy		Jun-14			Jun-14
120	Braddock Medical Group	Ambulatory		Feb-14			Feb-14
121	Braddock Oncology Associates	Radiology	Jan-11	Jan-13	Jan-13		
122	Bravo	Payor	Dec-12			Dec-12	
123	Bravo Health Advanced Care Center	Ambulatory	Feb-13	Feb-13	Mar-13		Nov-13
124	Brenda C. Scribner MD PA	Ambulatory		Apr-14			Apr-14
125	Broadmead Medical Services	Ambulatory	Apr-12				
126	Broadneck Pharmacy	Pharmacy		Oct-13			Nov-13
127	Brookville Pharmacy - Brooksville	Pharmacy		Mar-14			Mar-14
128	Bruce S. Rosenblum MD PC	Ambulatory		Feb-14			Feb-14
129	Brunswick Pharmacy	Pharmacy		Feb-14			Feb-14
130	Burt Littman, M.D.	Ambulatory		Feb-14			Feb-14
131	c.naganna md pa	Ambulatory		Jun-14			Jun-14
132	Calvert County Health Department	Government Agency		Jan-14			Jan-14
133	Calvert County Nursing Center	Long Term Care	Feb-12				
134	Calvert Family Practice Associates, PA	Ambulatory		Apr-14			Apr-14
135	Calvert Internal Medicine Group	Ambulatory	Mar-12	Jul-12	Jul-12	Oct-12	Nov-13
136	Calvert Manor Healthcare	Long Term Care	Jun-12	Jul-12	Jul-12		
137	Calvert Memorial Hospital	Hospital	Aug-11	Jan-13	Feb-13		Nov-13
138	Calvert Physician Associates	Ambulatory		Apr-14			Apr-14
139	Cambridge Pediatrics, LLC	Ambulatory	Feb-12	Mar-12	Mar-12	Jun-13	Apr-14
140	Cancer Care Center of Frederick	Ambulatory	Mar-12	Mar-12	Mar-12		
141	Cape Drugs	Pharmacy		Jan-14			Jan-14
142	Capital House Calls	Long Term Care	Jun-14	Jun-14			Jun-14
143	Capital Internal Medicine	Ambulatory		Apr-14			Apr-14
144	Capital Primary Care	Ambulatory	Apr-13				
145	Capitol Orthopaedics & Rehabilitation, LLC	Ambulatory	May-14	May-14			May-14
146	Cardiovascular Specialists of Central MD	Ambulatory	Aug-11	Nov-11			
147	Care Connection Inc.	Ambulatory	Jul-13	Aug-13			
148	Carefirst	Payor	Jul-13			Nov-13	
149	Carla B. Macleod & Associates, LLC	Ambulatory	May-14				
150	Caroline Nursing and Rehab	Long Term Care	Jan-12				
151	Carroll Family Medicine	Ambulatory	Oct-12				
152	Carroll Health Group	Ambulatory	Aug-11	Jan-13	Jan-13		May-14
153	Carroll Hospital Center	Hospital	Aug-11	Jul-12	Jul-12		Nov-13
154	Carroll Medical Group	Ambulatory		Jun-14			Jun-14
155	Carroll Mental Health Care	Ambulatory		Apr-14			Apr-14
156	Catholic Charities Child & Family Services	Ambulatory	Sep-13	Jun-14	Jun-14		Jun-14
157	catocin medical group	Ambulatory		Jun-14			Jun-14
158	Catonsville Pharmacy	Pharmacy		Feb-14			Feb-14
159	CBHS - Columbia	FQHC	Chase Brexton Health Services	Aug-13	Oct-13		Feb-14
160	CBHS - Easton	FQHC	Chase Brexton Health Services	Jul-13	Jul-13		Nov-13
161	CBHS - MICA Wellness Center	FQHC	Chase Brexton Health Services	Jun-13	Jul-13		
162	CBHS - Mt Vernon Center	FQHC	Chase Brexton Health Services	Sep-13	Oct-13		Mar-14
163	CBHS - Randallstown	FQHC	Chase Brexton Health Services	Jun-13	Jul-13		Nov-13
164	CCI - Franklin Park	Ambulatory	Community Clinics Inc	Mar-14	Mar-14		Jun-14
165	CCI - Gaithersburg	Ambulatory	Community Clinics Inc	Apr-14	Apr-14		Apr-14
166	CCI - Silver Spring	Ambulatory	Community Clinics Inc	Mar-13	May-13		Nov-13
167	CCI - Takoma Park	Ambulatory	Community Clinics Inc	Mar-14	Mar-14		Mar-14
168	Cecil County Health Department	Government Agency	Dec-12				
169	Cecilton Family Practice	Ambulatory		Jun-14			Jun-14
170	Centennial Medical Group	Ambulatory	May-13	Jun-13	Jun-13	Jun-13	Nov-13
171	Center for Addiction Medicine	Ambulatory		Feb-14			Feb-14
172	Center for Pain and Rehab	Ambulatory		Jan-14			Jan-14

## CRISP Portal, ENS & PDMP Adoption by Facility

Count	Organization	Type	Portal Participation Agreement	Training*	Portal Live*	ENS Live*	PDMP Access
173	Center for Pelvic Pain in Annapolis	Ambulatory		Feb-14			Feb-14
174	Center for Sleep and Wake Disorders	Ambulatory	Jan-11				
175	Central Maryland Urology Associates	Ambulatory	Nov-12	Nov-12	Nov-12		
176	Centreville Family Medicine	Ambulatory	Sep-11	Aug-13			
177	Channel Marker Inc.	Ambulatory	Nov-13			Jan-14	
178	Chapel View Family Care	Ambulatory	Apr-13	Jul-13	Aug-13	Mar-14	
179	Charles A. Haile, M.D.	Ambulatory	Mar-14				
180	Charles County Neurology	Ambulatory	May-14	Jun-14			Jun-14
181	Charlotte Hall Veterans Home	Ambulatory	Nov-12	Nov-12	Nov-12		Nov-13
182	Charter Internal Medicine, LLC	Ambulatory	Mar-13	Mar-13	Mar-13		
183	Charu Mehta, MD	Ambulatory		May-14			May-14
184	Chase Brexton Health Services	FQHC	Apr-13	Jun-13	Jun-13	Jun-13	Nov-13
185	Chase Brexton Health Services Pharmacy	Pharmacy	Chase Brexton Health Services	Apr-14			Apr-14
186	Chase Brexton Pharmacy Columbia	Pharmacy	Chase Brexton Health Services	Apr-14			Apr-14
187	Chesapeake Contemporary Dentistry	Ambulatory		Jun-14			Jun-14
188	Chesapeake Oncology-Hematology Associates	Ambulatory		Mar-14			Mar-14
189	Chesapeake Otolaryngology Associates	Ambulatory	Jul-13	Aug-13	Sep-13		Nov-13
190	Chesapeake Potomac Regional Cancer Center	Ambulatory	Mar-12	Jul-12	Jul-12		
191	Chesapeake Primary Care Group	Ambulatory		Jan-14			Jan-14
192	Children's Medical Group	Ambulatory	May-12	Jul-12	Jul-12		
193	Choice Pain & Rehabilitation Center LLC	Ambulatory		May-14			May-14
194	Choice Pharmacy	Pharmacy		Mar-14			Mar-14
195	Choptank Community Health Services, Inc.	FQHC	Dec-13	Nov-13	Dec-13		Dec-13
196	Chukwuma Ebo, M.D.	Ambulatory		Feb-14			Feb-14
197	Chul S. Kwon, M.D.	Ambulatory		Mar-14			Mar-14
198	Citizens Care & Rehabilitation Center	Long Term Care	May-13				
199	Citizens Pharmacy Services	Pharmacy		Feb-14			Feb-14
200	City Discount Pharmacy	Pharmacy		May-14			May-14
201	City Pharmacy of Elkton Inc	Pharmacy		Mar-14			Mar-14
202	Clayton Pharmacy	Pharmacy		Jun-14			Jun-14
203	Clear Spring Pharmacy	Pharmacy		Jan-14			Jan-14
204	Clevinger Neurology	Ambulatory		May-14			May-14
205	Clinical Associates	Ambulatory	May-13	Jun-13	Jul-13	Jan-14	Nov-13
206	Clinical Associates - GBMC Physicians' Pavilion	Ambulatory	Clinical Associates	Jun-13	Apr-13		
207	Clinical Associates - Reisterstown	Ambulatory	Clinical Associates	Mar-14	Mar-14		
208	Clinical Associates - Rotunda	Ambulatory	Clinical Associates	Feb-14	Feb-14		
209	Clinical Associates - Saint Joseph Professional Center Building	Ambulatory	Clinical Associates				
210	Clinical Associates - The Quarry	Ambulatory	Clinical Associates				
211	Clinical Associates - Towson	Ambulatory	Clinical Associates	Feb-14	Feb-14		
212	Clinical Associates - Woodholme	Ambulatory	Clinical Associates				
213	Coastal Drug	Pharmacy		Apr-14			Apr-14
214	Cohen & Pushkin, M.D., P.A.	Ambulatory	May-14	May-14	May-14		May-14
215	Collingswood Nursing and Rehabilitation Center	Long Term Care	Jul-13	Jan-14	Jan-14		
216	Columbia Implant and Cosmetic Dentistry	Ambulatory		May-14			May-14
217	Columbia Medical Practice	Ambulatory	Feb-13	Sep-13	Sep-13	Apr-13	Nov-13
218	Columbia Pharmacy	Pharmacy		May-14			May-14
219	Committed to Change	Ambulatory		May-14			May-14
220	Community Care Rx	Pharmacy		Mar-14			Mar-14
221	Community Clinics Inc	FQHC	Apr-13	Jul-12	Feb-14	Dec-13	Feb-14
222	Community Family Medicine PC	Ambulatory	May-14	May-14			May-14
223	Community Pharmacy	Pharmacy		Feb-14			Feb-14
224	Community Pharmacy - Baltimore	Pharmacy		Feb-14			Feb-14
225	Community Radiology Associates	Radiology	Sep-10	Dec-11	Dec-11		May-14
226	Comprehensive Allergy & Asthma Care Center	Ambulatory		Jun-14			Jun-14
227	Comprehensive Pain Center	Ambulatory		Mar-14			Mar-14

## CRISP Portal, ENS & PDMP Adoption by Facility

Count	Organization	Type	Portal Participation Agreement	Training*	Portal Live*	ENS Live*	PDMP Access
228	Comprehensive Primary Care	Ambulatory	Aug-12	Jun-12	Nov-12	Nov-13	Nov-13
229	Comprehensive Women's Health	Ambulatory	Jul-12	Jul-12	Jul-12		Mar-14
230	Contact Lens Associates	Ambulatory	Jun-13	Jun-13	Sep-13		
231	Co-op Pharmacy	Pharmacy		May-14			May-14
232	Cornerstone Montgomery	Ambulatory	Jul-12	Sep-12	Sep-12		
233	Cornerstone Pain & Restoration	Ambulatory		Apr-14			Apr-14
234	Costco Pharmacy	Pharmacy		Mar-14			Mar-14
235	Costco Pharmacy #1000	Pharmacy		Feb-14			Feb-14
236	Costco Pharmacy #1039	Pharmacy		Apr-14			Apr-14
237	Costco Pharmacy #1078	Pharmacy		Feb-14			Feb-14
238	Costco Pharmacy #1124	Pharmacy		Feb-14			Feb-14
239	Costco Pharmacy #203	Pharmacy		Jan-14			Jan-14
240	Costco Pharmacy #208	Pharmacy		Jan-14			Jan-14
241	Costco Pharmacy #325	Pharmacy		Feb-14			Feb-14
242	Costco Pharmacy #330	Pharmacy		Feb-14			Feb-14
243	Costco Wholesale #213	Pharmacy		Feb-14			Feb-14
244	Costco Wholesale #214	Pharmacy		Feb-14			Feb-14
245	Courtland Gardens	Long Term Care	LifeBridge Health				
246	Craigs Drug Store Inc	Pharmacy		Jun-14			Jun-14
247	Crain Medical PA	Ambulatory		Apr-14			Apr-14
248	Crain Towers Pharmacy	Pharmacy		Jan-14			Jan-14
249	Crisfield Clinic	Ambulatory		Jan-14			Jan-14
250	Crofton Family Medicine	Ambulatory		Jun-14			Jun-14
251	Crofton Internal Medicine	Ambulatory		Jan-14			Jan-14
252	Crossroads Community Inc.	Ambulatory	Feb-14				
253	Crossroads Medical Associates	Ambulatory	Jan-14	Jan-14	Feb-14	Apr-14	Feb-14
254	CVS Pharmacy	Pharmacy		Jun-14			Jun-14
255	CVS Pharmacy #10203	Pharmacy		Apr-14			Apr-14
256	CVS Pharmacy #1177	Pharmacy		Mar-14			Mar-14
257	CVS Pharmacy #1330	Pharmacy		Apr-14			Apr-14
258	CVS Pharmacy #1431	Pharmacy		Apr-14			Apr-14
259	CVS Pharmacy #1433	Pharmacy		Jun-14			Jun-14
260	CVS Pharmacy #1434	Pharmacy		May-14			May-14
261	CVS Pharmacy #1435	Pharmacy		Mar-14			Apr-14
262	CVS Pharmacy #1437	Pharmacy		Jun-14			Jun-14
263	CVS Pharmacy #1439	Pharmacy		May-14			May-14
264	CVS Pharmacy #1440	Pharmacy		Apr-14			Apr-14
265	CVS Pharmacy #1442	Pharmacy		Apr-14			Apr-14
266	CVS Pharmacy #1445	Pharmacy		Apr-14			Apr-14
267	CVS Pharmacy #1446	Pharmacy		Apr-14			Apr-14
268	CVS Pharmacy #1447	Pharmacy		Mar-14			Mar-14
269	CVS Pharmacy #1449	Pharmacy		Mar-14			Apr-14
270	CVS Pharmacy #1451	Pharmacy		Mar-14			Mar-14
271	CVS Pharmacy #1453	Pharmacy		Apr-14			Apr-14
272	CVS Pharmacy #1456	Pharmacy		May-14			May-14
273	CVS Pharmacy #1458	Pharmacy		Mar-14			Mar-14
274	CVS Pharmacy #1459	Pharmacy		Apr-14			Apr-14
275	CVS Pharmacy #1461	Pharmacy		Mar-14			Mar-14
276	CVS Pharmacy #1465	Pharmacy		Apr-14			Apr-14
277	CVS Pharmacy #1468	Pharmacy		Apr-14			Apr-14
278	CVS Pharmacy #1470	Pharmacy		Apr-14			Apr-14
279	CVS Pharmacy #1472	Pharmacy		Apr-14			Apr-14
280	CVS Pharmacy #1475	Pharmacy		Apr-14			Apr-14
281	CVS Pharmacy #1476	Pharmacy		Mar-14			Apr-14
282	CVS Pharmacy #1477	Pharmacy		Jun-14			Jun-14
283	CVS Pharmacy #1479	Pharmacy		Mar-14			Mar-14
284	CVS Pharmacy #1484	Pharmacy		Mar-14			Mar-14
285	CVS Pharmacy #1485	Pharmacy		Apr-14			Apr-14
286	CVS Pharmacy #1486	Pharmacy		Jun-14			Jun-14
287	CVS Pharmacy #1488	Pharmacy		Apr-14			Apr-14
288	CVS Pharmacy #1490	Pharmacy		May-14			May-14
289	CVS Pharmacy #1491	Pharmacy		Apr-14			Apr-14
290	CVS Pharmacy #1492	Pharmacy		Mar-14			Mar-14
291	CVS Pharmacy #1495	Pharmacy		Mar-14			Mar-14
292	CVS Pharmacy #1496	Pharmacy		Apr-14			Apr-14
293	CVS Pharmacy #1497	Pharmacy		Apr-14			Apr-14
294	CVS Pharmacy #1498	Pharmacy		Apr-14			Apr-14
295	CVS Pharmacy #1499	Pharmacy		Mar-14			Mar-14
296	CVS Pharmacy #1500	Pharmacy		Mar-14			Mar-14
297	CVS Pharmacy #1503	Pharmacy		Apr-14			Apr-14
298	CVS Pharmacy #1504	Pharmacy		Apr-14			Apr-14
299	CVS Pharmacy #1505	Pharmacy		Apr-14			Apr-14

## CRISP Portal, ENS & PDMP Adoption by Facility

Count	Organization	Type	Portal Participation Agreement	Training*	Portal Live*	ENS Live*	PDMP Access
300	CVS Pharmacy #1506	Pharmacy		Apr-14			Apr-14
301	CVS Pharmacy #1509	Pharmacy		Jun-14			Jun-14
302	CVS Pharmacy #1510	Pharmacy		Apr-14			Apr-14
303	CVS Pharmacy #1511	Pharmacy		Apr-14			Apr-14
304	CVS Pharmacy #1514	Pharmacy		Apr-14			Apr-14
305	CVS Pharmacy #1515	Pharmacy		May-14			May-14
306	CVS Pharmacy #1517	Pharmacy		Jun-14			Jun-14
307	CVS Pharmacy #1518	Pharmacy		Mar-14			Mar-14
308	CVS Pharmacy #1521	Pharmacy		Mar-14			Mar-14
309	CVS Pharmacy #1522	Pharmacy		Mar-14			Apr-14
310	CVS Pharmacy #1524	Pharmacy		Mar-14			Mar-14
311	CVS Pharmacy #1621	Pharmacy		Apr-14			Apr-14
312	CVS Pharmacy #169	Pharmacy		Apr-14			Apr-14
313	CVS Pharmacy #1735	Pharmacy		Apr-14			Apr-14
314	CVS Pharmacy #1790	Pharmacy		Jan-14			Jan-14
315	CVS Pharmacy #1795	Pharmacy		Apr-14			Apr-14
316	CVS Pharmacy #1797	Pharmacy		Mar-14			Mar-14
317	CVS Pharmacy #1800	Pharmacy		Apr-14			Apr-14
318	CVS Pharmacy #1831	Pharmacy		Apr-14			Apr-14
319	CVS Pharmacy #1880	Pharmacy		Apr-14			Apr-14
320	CVS Pharmacy #1881	Pharmacy		Mar-14			Mar-14
321	CVS Pharmacy #1909	Pharmacy		Jun-14			Jun-14
322	CVS Pharmacy #1964	Pharmacy		Mar-14			Mar-14
323	CVS Pharmacy #1973	Pharmacy		Apr-14			Apr-14
324	CVS Pharmacy #2005	Pharmacy		May-14			May-14
325	CVS Pharmacy #2010	Pharmacy		Apr-14			Apr-14
326	CVS Pharmacy #2016	Pharmacy		Jun-14			Jun-14
327	CVS Pharmacy #2033	Pharmacy		Apr-14			Apr-14
328	CVS Pharmacy #2034	Pharmacy		Apr-14			Apr-14
329	CVS Pharmacy #2043	Pharmacy		Jun-14			Jun-14
330	CVS Pharmacy #2045	Pharmacy		Mar-14			Mar-14
331	CVS Pharmacy #2066	Pharmacy		Mar-14			Mar-14
332	CVS Pharmacy #2160	Pharmacy		Apr-14			Apr-14
333	CVS Pharmacy #2216	Pharmacy		Apr-14			Apr-14
334	CVS Pharmacy #2221	Pharmacy		Jun-14			Jun-14
335	CVS Pharmacy #2230	Pharmacy		Mar-14			Mar-14
336	CVS Pharmacy #2239	Pharmacy		Apr-14			Apr-14
337	CVS Pharmacy #2334	Pharmacy		Jun-14			Jun-14
338	CVS Pharmacy #2335	Pharmacy		Apr-14			Apr-14
339	CVS Pharmacy #2422	Pharmacy		Apr-14			Apr-14
340	CVS Pharmacy #244	Pharmacy		Mar-14			Mar-14
341	CVS Pharmacy #2455	Pharmacy		Apr-14			Apr-14
342	CVS Pharmacy #2499	Pharmacy		Mar-14			Mar-14
343	CVS Pharmacy #2522	Pharmacy		Jun-14			Jun-14
344	CVS Pharmacy #2531	Pharmacy		Mar-14			Mar-14
345	CVS Pharmacy #2549	Pharmacy		Mar-14			Mar-14
346	CVS Pharmacy #2775	Pharmacy		Mar-14			Mar-14
347	CVS Pharmacy #2778	Pharmacy		Apr-14			Apr-14
348	CVS Pharmacy #2779	Pharmacy		Apr-14			Apr-14
349	CVS Pharmacy #2865	Pharmacy		Mar-14			Mar-14
350	CVS Pharmacy #2883	Pharmacy		Apr-14			Apr-14
351	CVS Pharmacy #2956	Pharmacy		Mar-14			Mar-14
352	CVS Pharmacy #3166	Pharmacy		May-14			May-14
353	CVS Pharmacy #3366	Pharmacy		Jun-14			Jun-14
354	CVS Pharmacy #3517	Pharmacy		Jun-14			Jun-14
355	CVS Pharmacy #352	Pharmacy		Mar-14			Mar-14
356	CVS Pharmacy #3976	Pharmacy		Jun-14			Jun-14
357	CVS Pharmacy #4017	Pharmacy		Apr-14			Apr-14
358	CVS Pharmacy #4018	Pharmacy		Mar-14			Apr-14
359	CVS Pharmacy #4030	Pharmacy		Mar-14			Mar-14
360	CVS Pharmacy #4044	Pharmacy		Mar-14			Mar-14
361	CVS Pharmacy #4079	Pharmacy		Mar-14			Mar-14
362	CVS Pharmacy #4102	Pharmacy		Mar-14			Apr-14
363	CVS Pharmacy #4107	Pharmacy		Apr-14			Apr-14
364	CVS Pharmacy #4129	Pharmacy		Apr-14			Apr-14
365	CVS Pharmacy #4170	Pharmacy		Apr-14			Apr-14
366	CVS Pharmacy #4199	Pharmacy		Apr-14			Apr-14
367	CVS Pharmacy #4212	Pharmacy		Mar-14			Mar-14
368	CVS Pharmacy #4214	Pharmacy		Jun-14			Jun-14
369	CVS Pharmacy #4220	Pharmacy		Apr-14			Apr-14
370	CVS Pharmacy #4225	Pharmacy		May-14			May-14
371	CVS Pharmacy #4274	Pharmacy		May-14			May-14

## CRISP Portal, ENS & PDMP Adoption by Facility

Count	Organization	Type	Portal Participation Agreement	Training*	Portal Live*	ENS Live*	PDMP Access
372	CVS Pharmacy #4302	Pharmacy		Jun-14			Jun-14
373	CVS Pharmacy #4411	Pharmacy		Mar-14			Mar-14
374	CVS Pharmacy #4418	Pharmacy		Jun-14			Jun-14
375	CVS Pharmacy #4429	Pharmacy		Apr-14			Apr-14
376	CVS Pharmacy #452	Pharmacy		May-14			May-14
377	CVS Pharmacy #4650	Pharmacy		May-14			May-14
378	CVS Pharmacy #540	Pharmacy		Jun-14			Jun-14
379	CVS Pharmacy #5650	Pharmacy		Apr-14			Apr-14
380	CVS Pharmacy #5706	Pharmacy		Mar-14			Mar-14
381	CVS Pharmacy #5728	Pharmacy		Apr-14			Apr-14
382	CVS Pharmacy #5733	Pharmacy		Jun-14			Jun-14
383	CVS Pharmacy #5875	Pharmacy		Jun-14			Jun-14
384	CVS Pharmacy #5909	Pharmacy		Apr-14			Apr-14
385	CVS Pharmacy #5926	Pharmacy		Apr-14			Apr-14
386	CVS Pharmacy #6041	Pharmacy		Jun-14			Jun-14
387	CVS Pharmacy #6614	Pharmacy		Mar-14			Mar-14
388	CVS Pharmacy #6765	Pharmacy		Apr-14			Apr-14
389	CVS Pharmacy #6858	Pharmacy		Mar-14			Mar-14
390	CVS Pharmacy #7139	Pharmacy		Mar-14			Mar-14
391	CVS Pharmacy #7656	Pharmacy		Apr-14			Apr-14
392	CVS Pharmacy #7911	Pharmacy		Mar-14			Mar-14
393	CVS Pharmacy #7952	Pharmacy		May-14			May-14
394	CVS Pharmacy #8281	Pharmacy		Mar-14			Mar-14
395	Cyriac and Mundra MD PA	Ambulatory	Nov-13	Mar-14	Mar-14		Mar-14
396	Daljeet Singh Sidhu, MD	Pharmacy		Jan-14			Jan-14
397	Dan Morhaim	Ambulatory		Jun-14			Jun-14
398	Daniel D. Storch, MD	Ambulatory		Jun-14			Jun-14
399	Darlington Pharmacy	Pharmacy		Jan-14			Jan-14
400	Darmon Medical Services	Ambulatory		Apr-14			Apr-14
401	Darryl M. Coleman, M.D.	Ambulatory		Apr-14			Apr-14
402	David B. Harding, M.D.	Ambulatory	Feb-14	Mar-14			Mar-14
403	David R. McDuff, M.D.	Ambulatory		Feb-14			Feb-14
404	Dawn A. Broderick, M.D.	Ambulatory	Oct-13	Apr-14	Apr-14		Apr-14
405	Deale Pharmacy	Pharmacy		Jun-14			Jun-14
406	DECALO Medical Group	Ambulatory		Mar-14			Mar-14
407	Deep Creek Pharmacy	Pharmacy		Sep-13			Nov-13
408	Deepak Seth , MD	Ambulatory	Jun-13				
409	Delmarva Pain Associates	Ambulatory		Feb-14			Feb-14
410	Delmarva Pharmacy	Pharmacy		Jan-14			Jan-14
411	Delta Family Medicine	Ambulatory	Jun-14				
412	Delta Family Medicine	Ambulatory		Jun-14			Jun-14
413	Demmy's Pharmacy LLC	Pharmacy		Mar-14			Mar-14
414	Denis W. MacDonald, M.D., P.A.	Ambulatory		Jun-14			Jun-14
415	Dennis Dey, MD	Ambulatory		Apr-14			Apr-14
416	Denton Medical Center	FQHC	Dec-13	Dec-13	Dec-13		
417	Desai & Holmes, MD, LLC	Ambulatory	Feb-13	Feb-13	Feb-13		Nov-13
418	Desai Medical Center	Ambulatory	Feb-14	May-14	May-14		
419	Devlin Manor	Long Term Care	Mar-11				
420	DHMH - Office of Health Services	Government Agency	Dec-12			Feb-13	
421	Digestive Disease Associates	Ambulatory	Feb-12	Dec-12	Jun-14		Jun-14
422	Dimensions Health	Health System	Jul-11	May-14			May-14
423	Divine Internal Medicine LLC	Ambulatory		Apr-14			Apr-14
424	Dobin and Hoeck Internal Medicine	Ambulatory	Jul-12	Jul-12	Jul-12	Jun-14	Jan-14
425	Doctors Community Hospital	Hospital	Oct-11	Apr-13	Apr-13	Jun-13	Nov-13
426	Doctor's Express - Towson	Ambulatory		Apr-14			Apr-14
427	Doctor's Express Edgewater	Ambulatory		Apr-14			Apr-14
428	Doctors Express Pikesville	Ambulatory	Mar-14	Jun-14			Jun-14
429	Doctors Regional Cancer Center	Ambulatory	Sep-12	Sep-12	Sep-12		
430	Dolph Druckman MD	Ambulatory		Apr-14			Apr-14
431	Donald Bousel, MD	Ambulatory	Jan-13	Apr-14	Apr-14		Apr-14
432	Douglas W. Heinrichs MD and Associates	Ambulatory		Jan-14			Jan-14
433	Downtown Baltimore Family Care	Ambulatory	Oct-13	Feb-13	Oct-13		Nov-13
434	Dpinder Singh, MD	Ambulatory		Jun-14			Jun-14
435	Dr Jeffrey Gaber and Assoc's	Ambulatory		Jun-14			Jun-14
436	Dr. Basharat Aziz	Ambulatory	Jun-14	Jun-14			Jun-14
437	Dr. David A Schwartz	Ambulatory	Jan-13	Jan-13	Jan-13		Nov-13
438	Dr. David Gar-El MD	Ambulatory	Apr-14	Apr-14	Apr-14		Apr-14
439	Dr. Gary L Gay & Associates, LLC	Ambulatory		Mar-14			May-14
440	Dr. Jhansi R. Ganesan, MD	Ambulatory	Apr-13	Apr-13	Apr-13		Nov-13
441	Dr. Kim Jones-Fearing	Ambulatory	Jun-14	May-14			May-14
442	Dr. Ritu Chitakki, MD, LLC	Ambulatory	Jun-14	Jun-14			Jun-14

## CRISP Portal, ENS & PDMP Adoption by Facility

Count	Organization	Type	Portal Participation Agreement	Training*	Portal Live*	ENS Live*	PDMP Access
443	Dr. Robert Welik	Ambulatory	Jul-11				
444	Dr. Robin Bissell	Ambulatory	Sep-13	Oct-13	Oct-13		Nov-13
445	Dr. Sagar	Ambulatory	May-14	Jun-14			Jun-14
446	Dr. Sally Mejia	Ambulatory	Jun-14	Jun-14			Jun-14
447	Dr. Vinu Ganti	Ambulatory	Jun-13	Sep-13	Oct-13		Nov-13
448	Dragos Popescu, MD	Ambulatory	Dec-12	Dec-12	Dec-12		Nov-13
449	Drs Vaywala & Ahn P.A.	Ambulatory		May-14			May-14
450	Drs. Edwards & Stephens, LLC	Ambulatory		Mar-14			Mar-14
451	Drs. Gehris, Jordan, Day and Associates, LLC	Ambulatory	Oct-12	Oct-12	Oct-12		
452	Drs. Schreiber and Kelsey	Ambulatory	May-13	Feb-14	Mar-14		Mar-14
453	Drs. Shanahan and Ferguson	Ambulatory	May-13	Jun-13	Jun-13		May-14
454	Drug City Pharmacy	Pharmacy		Jan-14			Jan-14
455	Drug Store Pharmacy & Surgicals	Pharmacy		May-14			May-14
456	Dulaney Valley Healthmart Pharmacy	Pharmacy		Apr-14			Apr-14
457	Dundalk Pediatric Associates, P.A.	Ambulatory	Apr-13	Apr-13	Apr-13		Nov-13
458	Dynamic Care Pharmacy	Pharmacy		May-14			May-14
459	E. Pasmanik MD, LLC	Ambulatory	Feb-14	Feb-14	Jun-14		Feb-14
460	Eastern Avenue Health Solutions	Long Term Care	Nov-13	Dec-13	Mar-14		
461	Eastern Shore Medical Center	Ambulatory		Apr-14			Apr-14
462	Eastern Shore Pediatrics LLC	Ambulatory	May-13	Oct-13	Oct-13		Nov-13
463	Eastern Shore Primary Care	Ambulatory	Dec-13	Jan-14	Jan-14		Jan-14
464	Edge Medical Care PC	Ambulatory	Jun-13	Sep-13	Sep-13		Nov-13
465	Edward McCready Memorial Hospital	Hospital	Aug-11	Feb-14	Feb-14		Feb-14
466	Egle Nursing and Rehabilitation Center	Long Term Care	May-13	Jul-13	Jul-13	Jun-13	
467	Elkton Friendly Pharmacy	Pharmacy		Apr-14			Apr-14
468	Elkton Treatment Center	Ambulatory		Mar-14			Mar-14
469	Ellicott City Pediatric Associates	Ambulatory	Aug-13	Aug-13	Oct-13		
470	Ellicott City Primary Care Physicians, PA	Ambulatory		May-14			May-14
471	Emergency Medicine Associates	Ambulatory	Jun-14				
472	Emmitsburg Osteopathic Primary Care Center	Ambulatory	Nov-11	Nov-11	Nov-11		
473	Endoscopic Microsurgery Associates	Ambulatory	Oct-13				
474	Erickson Living	Long Term Care	Mar-12	Mar-12			
475	Evergreen Health Care	Ambulatory	Nov-13	Dec-13	Apr-13	Mar-14	Dec-13
476	Express Care Urgent Care Center	Ambulatory		Apr-14			Apr-14
477	Express Pharmacy	Pharmacy		Jun-14			Jun-14
478	F. Caroline Define, MD	Ambulatory		Feb-14			Feb-14
479	Fairwood Spine and Pain Center	Ambulatory	Jun-13	Mar-14	Mar-14		
480	Falls Medical Specialists	Ambulatory	Sep-13	Sep-13	Oct-13		Mar-14
481	Fallston Pharmacy	Pharmacy		May-14			May-14
482	Family Care Associates	Ambulatory		Jan-14			Jan-14
483	Family Care of Easton	Ambulatory	Jul-12	Jul-12	Jul-12		
484	Family Health Center	Ambulatory	MedStar	Nov-11	Nov-11	Sep-13	Nov-13
485	Family Health Centers of Baltimore	FQHC	Oct-13				
486	Family Healthcare of Germantown	Ambulatory	Jan-12	Jan-12	Jan-12	Mar-13	Nov-13
487	Family Medical Center	Ambulatory		Feb-14			Feb-14
488	Family Meds Inc	Pharmacy		Jan-14			Jan-14
489	Family Services	Ambulatory	Jun-12	Jun-12	Jun-12	Feb-14	Nov-13
490	Family Services OHMC	Ambulatory	Jun-12			Jun-14	
491	Farragut Avenue Internal Medicine	Ambulatory	Nov-11	Nov-11	Nov-11		
492	Fassett Magee Health Center	FQHC	Dec-13	Dec-13	Dec-13		
493	Fast Track Urgent Care	Ambulatory	Nov-12	Oct-13	Oct-13		Nov-13
494	Federalsburg Medical Center	FQHC	Dec-13	Dec-13	Dec-13		
495	Feldmans Pharmacy at Chartwell	Pharmacy		May-14			May-14
496	Femi Care Center	Ambulatory	Apr-14				
497	Fink's Pharmacy	Pharmacy		Feb-14			Feb-14
498	Finksburg Pharmacy	Pharmacy		Feb-14			Feb-14
499	First Choice	Ambulatory	Jun-14	Jun-14	Jun-14		Jun-14
500	Five Star Physician Services, LLC	Ambulatory	May-13	Aug-13	Sep-13		Nov-13
501	Foer Medical Arts Pharmacy-Rockledge Drive	Pharmacy		Jan-14			Jan-14
502	Foer Medical Arts Pharmacy-Wisconsin Avenue	Pharmacy		Jun-14			Jun-14
503	For All Seasons, Inc	Ambulatory		Apr-14			Apr-14
504	Forest Haven Nursing Home	Long Term Care	Sep-13	Oct-13	Oct-13		
505	Fort Washington Medical Center	Hospital	Sep-11	Aug-12	Sep-12		Nov-13
506	Foster Medical Care, LLC	Ambulatory		Jan-14			Jan-14
507	Foundation Schools	Ambulatory		Apr-14			Apr-14
508	Frederick County Health Department	Government Agency	Dec-12	Jan-14	Jan-14		Jan-14

## CRISP Portal, ENS & PDMP Adoption by Facility

Count	Organization	Type	Portal Participation Agreement	Training*	Portal Live*	ENS Live*	PDMP Access
509	Frederick Gastroenterology Associates	Ambulatory	Jul-13	Jul-13	Aug-13		
510	Frederick Internal Medicine	Ambulatory		May-14			May-14
511	Frederick Memorial Hospital	Hospital	Jun-11	Jul-12	Jul-12		Jan-14
512	Frederick Primary Care	Ambulatory		Jun-14			Jun-14
513	Frederick Primary Care Associates	Ambulatory	Sep-13	Jan-14	Jan-14	Nov-13	Jan-14
514	Frederick Spine and Rehabilitation Center	Ambulatory	Feb-14	Jan-14			Feb-14
515	Friendsville Pharmacy	Pharmacy		Jun-14			Jun-14
516	FutureCare Canton Harbor	Long Term Care	FutureCare Health and Management Corporation				
517	FutureCare Charles Village	Long Term Care	FutureCare Health and Management Corporation				
518	FutureCare Cherrywood	Long Term Care	FutureCare Health and Management Corporation				
519	FutureCare Chesapeake	Long Term Care	FutureCare Health and Management Corporation				
520	FutureCare Cold Spring	Long Term Care	FutureCare Health and Management Corporation				
521	FutureCare Health and Management Corporation	Long Term Care	Feb-14	Mar-14	Mar-14	May-14	Mar-14
522	FutureCare Homewood	Long Term Care	FutureCare Health and Management Corporation				
523	FutureCare Irvington	Long Term Care	FutureCare Health and Management Corporation				
524	FutureCare Lochearn	Long Term Care	FutureCare Health and Management Corporation				
525	FutureCare North Point	Long Term Care	FutureCare Health and Management Corporation	May-14	May-14		May-14
526	FutureCare Old Court	Long Term Care	FutureCare Health and Management Corporation				
527	FutureCare Pineview	Long Term Care	FutureCare Health and Management Corporation				
528	FutureCare Sandtown	Long Term Care	FutureCare Health and Management Corporation				
529	Garrett County Health Department	Government Agency		May-14			May-14
530	Garrett County Memorial Hospital	Hospital	Apr-11	Jan-14	Jan-14		Jan-14
531	Garrett Medical Group, P.A.	Ambulatory	Jun-12				
532	Garrett Surgical Group	Ambulatory	Jul-12				
533	Gateway Medical Center	Ambulatory		Apr-14			Apr-14
534	Geetha Subramaniam	Ambulatory		Mar-14			Mar-14
535	Genesis Cromwell Facility	Long Term Care	Genesis Healthcare	Feb-14	Feb-14		Feb-14
536	Genesis Franklin Woods	Long Term Care	Genesis Healthcare				
537	Genesis Healthcare	Long Term Care	Oct-13	Dec-13	Dec-13		Dec-13
538	Genesis Heritage Center	Long Term Care	Genesis Healthcare	Feb-14	Feb-14		

## CRISP Portal, ENS & PDMP Adoption by Facility

Count	Organization	Type	Portal Participation Agreement	Training*	Portal Live*	ENS Live*	PDMP Access
539	Genoa Healthcare	Pharmacy		Mar-14			Mar-14
540	George C James, MD	Ambulatory		Apr-14			Apr-14
541	Georges Creek Pharmacy Inc	Pharmacy		Jan-14			Jan-14
542	Gerald Family Care	Ambulatory	Sep-11	Apr-13	Apr-13	Jan-13	
543	Giant Eagle Pharmacy #1841	Pharmacy		Jan-14			Jan-14
544	Giant Eagle Pharmacy #1842	Pharmacy		Apr-14			Apr-14
545	Giant Pharmacy #108	Pharmacy		Jun-14			Jun-14
546	Giant Pharmacy #109	Pharmacy		Jun-14			Jun-14
547	Giant Pharmacy #111	Pharmacy		May-14			May-14
548	Giant Pharmacy #117	Pharmacy		Apr-14			Apr-14
549	Giant Pharmacy #129	Pharmacy		Mar-14			Mar-14
550	Giant Pharmacy #131	Pharmacy		Mar-14			Mar-14
551	Giant Pharmacy #146	Pharmacy		Feb-14			Feb-14
552	Giant Pharmacy #166	Pharmacy		Jun-14			Jun-14
553	Giant Pharmacy #167	Pharmacy		Jun-14			Jun-14
554	Giant Pharmacy #192	Pharmacy		Jun-14			Jun-14
555	Giant Pharmacy #194	Pharmacy		Jun-14			Jun-14
556	Giant Pharmacy #303	Pharmacy		Feb-14			Feb-14
557	Giant Pharmacy #304	Pharmacy		Mar-14			Mar-14
558	Giant Pharmacy #308	Pharmacy		Jun-14			Jun-14
559	Giant Pharmacy #322	Pharmacy		Mar-14			Mar-14
560	Giant Pharmacy #325	Pharmacy		Feb-14			Feb-14
561	Giant Pharmacy #337	Pharmacy		Jun-14			Jun-14
562	Giant Pharmacy #339	Pharmacy		Apr-14			Apr-14
563	Giant Pharmacy #344	Pharmacy		Apr-14			Apr-14
564	Giant Pharmacy #349	Pharmacy		May-14			May-14
565	Giant Pharmacy #358	Pharmacy		Mar-14			Mar-14
566	Giant Pharmacy #365	Pharmacy		Jun-14			Jun-14
567	Glade Valley Family Practice	Ambulatory		Jan-14			Jan-14
568	Glenwood Life Counseling Center	Ambulatory		Jan-14			Jan-14
569	Glick Psychiatry	Ambulatory		Feb-14			Feb-14
570	Go-Getters	Ambulatory	Aug-13	Aug-13	Sep-13	Nov-13	Jun-14
571	Goldsboro Medical Center	FQHC	Dec-13	Dec-13	Dec-13		
572	Gordys Riverside Pharmacy Inc	Pharmacy		Apr-14			Apr-14
573	Got A Doc Walk In Medical Centers	Ambulatory		May-14			May-14
574	Greater Baltimore Medical Associates	Ambulatory	Jun-12	Nov-12	Nov-12	Aug-12	Jan-14
575	Greater Baltimore Medical Center	Hospital	Jan-10	Jun-12	Jun-12		Nov-13
576	Greater Baltimore Medical Center at Perry Hall	Ambulatory		Apr-14			Apr-14
577	Green Ridge Behavioral Health	Ambulatory		Jan-14			Jan-14
578	Green Spring Internal Medicine, LLC	Ambulatory	Feb-12	Feb-12	Feb-12	Apr-13	Nov-13
579	Gregg's Pharmacy Inc	Pharmacy		Apr-14			Apr-14
580	Gregory Pokrywka MD	Ambulatory		Feb-14			Feb-14
581	GS Surgical Services, LLC	Ambulatory	Jul-12	Mar-13	Mar-13		Nov-13
582	Gul G. Chablani, M.D.	Ambulatory	Jan-14				
583	Gurmeet Sawhney, MD	Ambulatory	Jun-14	Jun-14			Jun-14
584	Halethorpe Pharmacy	Pharmacy		May-14			May-14
585	Hanson Pharmacy	Pharmacy		Jun-14			Jun-14
586	Happy Harry's #11037	Pharmacy		Mar-14			Mar-14
587	Happy Harry's #11043	Pharmacy		Mar-14			Mar-14
588	Happy Harry's #11054	Pharmacy		Mar-14			Mar-14
589	Happy Harry's #11064	Pharmacy		Apr-14			Apr-14
590	Harford Memorial Hospital	Hospital	Jan-12	Aug-12	Aug-12		Nov-13
591	Harford Pharmacy Inc	Pharmacy		Feb-14			Feb-14
592	Harford-Belair Community Mental Health	Ambulatory	Sep-13				
593	Harriet Lane Clinic	Ambulatory	Johns Hopkins Hospital	Jan-14	Jan-14		Jan-14
594	Harris Teeter #392	Pharmacy		May-14			May-14
595	Hayes Medical Center, P.A.	Ambulatory		May-14			May-14
596	Health Care for the Homeless MD	FQHC	May-13	May-13	May-13	Mar-14	Nov-13
597	Health Matters Urgent Care	Ambulatory		Apr-14			Apr-14
598	Health@Work	Ambulatory		May-14			May-14
599	Healthy Steps	Ambulatory	Jan-12	Jan-12	Jan-12		
600	Hebrew Home of Greater Washington	Long Term Care	Apr-12	Apr-12	May-12		
601	Hereford Pharmacy Inc	Pharmacy		Mar-14			Mar-14
602	Hillendale Pharmacy	Pharmacy		Jan-14			Jan-14
603	Hollywood Medical Center	Ambulatory	Feb-14	Feb-14	Apr-14	Jun-14	Apr-14
604	Hollywood Pharmacy	Pharmacy		Mar-14			Mar-14
605	Holy Cross - Aspen Hill Health Center	Ambulatory	Jul-12	Jul-12	Aug-12	May-14	Nov-13

## CRISP Portal, ENS & PDMP Adoption by Facility

Count	Organization	Type	Portal Participation Agreement	Training*	Portal Live*	ENS Live*	PDMP Access
606	Holy Cross - Silver Spring Health Center	Ambulatory	Nov-11	Nov-12	Nov-12		
607	Holy Cross Employee Health	Ambulatory	Holy Cross Hospital	Oct-11	Oct-11		
608	Holy Cross Health Center	Ambulatory	Nov-11	Nov-11	Nov-11		Nov-13
609	Holy Cross Home Health	Ambulatory	Oct-11				
610	Holy Cross Hospital	Hospital	Oct-11	Dec-11	Dec-11		Nov-13
611	HomeCare Maryland, LLC	Long Term Care	LifeBridge Health	May-14	May-14		
612	Hope Health Systems	Ambulatory	Nov-12	Oct-13	Oct-13		
613	Howard Cohen MD	Ambulatory		May-14			May-14
614	Howard County General Hospital	Hospital	Aug-11	Mar-12	Mar-12		Nov-13
615	Howard County Health Department	Government Agency		Mar-14			Mar-14
616	Humanim	Ambulatory	Jul-13	Sep-13	Sep-13	Aug-13	
617	Hunt Valley Pharmacy	Pharmacy		Jun-14			Jun-14
618	Independent Drug	Pharmacy		May-14			May-14
619	Indian Head Pharmacy	Pharmacy		Feb-14			May-14
620	Ingleside at King's Farm	Long Term Care	May-13	Jun-13	Jun-13	Jun-13	Dec-13
621	Institutes for Behavior Resources	Ambulatory	Sep-13	Sep-13	Sep-13		Nov-13
622	Integrax, LLC	Ambulatory	May-14	May-14			May-14
623	Internal Medicine Specialists of Frederick	Ambulatory		Jun-14			Jun-14
624	Irfan Saeed, MD	Ambulatory		May-14			May-14
625	Irina A. Skopets, MD, PA	Ambulatory	Sep-13	Sep-13	Oct-13		Nov-13
626	Irv Schindler DDS	Ambulatory		Apr-14			Apr-14
627	J. Richard Lilly, MD, ABFP and Associates, PC	Ambulatory	Jun-14	Jun-14			Jun-14
628	Jack D. Blaine, M.D	Ambulatory		Jan-14			Jan-14
629	Jai Medical Center	Ambulatory	Sep-13	Apr-14			Apr-14
630	Janjua Neurology MD PA	Ambulatory	Feb-13	Jan-13	Feb-13		
631	Jarrettsville Family Care	Ambulatory	Sep-12	Sep-12	Sep-12		Mar-14
632	Jarrettsville Pharmacy	Pharmacy		Feb-14			Feb-14
633	Jayantil K. Patel, M.D.	Ambulatory		May-14			May-14
634	JCHIP Acute	Health System	Johns Hopkins Hospital				
635	JCHIP Community	Ambulatory	Johns Hopkins Hospital	Oct-13	Oct-13	Jul-13	
636	JCHIP KnownCAD	Health System	Johns Hopkins Hospital			Jun-13	
637	Jewish Community Services	Ambulatory	May-14				
638	JHCP Annapolis	Ambulatory	Apr-12	Aug-12	Aug-12		
639	JHCP Bayview	Ambulatory	JHCP Annapolis				
640	JHCP Bowie	Ambulatory	JHCP Annapolis	Aug-12	Aug-12		Nov-13
641	JHCP Canton Crossing	Ambulatory	JHCP Annapolis	Jun-12	Jun-12	Sep-12	
642	JHCP Charles County	Ambulatory	JHCP Annapolis	Aug-12	Aug-12		
643	JHCP Cranberry Station	Ambulatory	JHCP Annapolis				
644	JHCP Downtown Bethesda	Ambulatory	JHCP Annapolis	Jul-12	Jul-12		
645	JHCP East Baltimore	Ambulatory	JHCP Annapolis	Jul-12	Jul-12		Nov-13
646	JHCP Frederick	Ambulatory	JHCP Annapolis	Aug-12	Aug-12		Apr-14
647	JHCP Fulton	Ambulatory	JHCP Annapolis	Jun-13	Oct-12		
648	JHCP Germantown	Ambulatory	JHCP Annapolis	Jul-12	Jul-12		
649	JHCP Glen Burnie	Ambulatory	JHCP Annapolis	Aug-12	Aug-12		Nov-13
650	JHCP Greater Dundalk	Ambulatory	JHCP Annapolis	Jul-12	Aug-12		Nov-13
651	JHCP Green Spring	Ambulatory	JHCP Annapolis	Aug-12	Aug-12		
652	JHCP Hager Park Health Center	Ambulatory	JHCP Annapolis				
653	JHCP Hagerstown	Ambulatory	JHCP Annapolis	May-12	May-12	Sep-12	May-14
654	JHCP Heart Care - Bethesda	Ambulatory	JHCP Annapolis	Oct-13	Oct-13		Nov-13
655	JHCP Heart Care - Rockville	Ambulatory	JHCP Annapolis	Jul-12	Jul-12		Jan-14
656	JHCP Howard County	Ambulatory	JHCP Annapolis	Aug-12	Aug-12		
657	JHCP Kent Island	Ambulatory	JHCP Annapolis	Sep-12	Sep-12		
658	JHCP Laurel	Ambulatory	JHCP Annapolis	Aug-12	Aug-12		Nov-13
659	JHCP Laurel Health Center	Ambulatory	JHCP Annapolis				
660	JHCP Monocacy Valley Health Center	Ambulatory	JHCP Annapolis				
661	JHCP Montgomery Grove	Ambulatory	JHCP Annapolis	May-12	May-12	Sep-12	Nov-13
662	JHCP North Bethesda	Ambulatory	JHCP Annapolis	Jul-12	Jul-12		Jun-14
663	JHCP OBGYN at Columbia	Ambulatory	JHCP Annapolis				
664	JHCP Odenton	Ambulatory	JHCP Annapolis	Aug-12	Aug-12		Apr-14
665	JHCP Water's Edge	Ambulatory	JHCP Annapolis	Jun-12	Jun-12	Sep-12	Nov-13
666	JHCP Westminster	Ambulatory	JHCP Annapolis	Aug-12	Sep-12		Nov-13
667	JHCP White Marsh	Ambulatory	JHCP Annapolis	Aug-12	Aug-12		Nov-13
668	JHCP Wyman Park	Ambulatory	JHCP Annapolis	Jul-12	Jul-12	Sep-12	Nov-13
669	John F Seidel DDS, PA	Ambulatory		May-14			May-14
670	John M. Lee MD PA	Ambulatory	Oct-13	Oct-13	Nov-13		Nov-13

## CRISP Portal, ENS & PDMP Adoption by Facility

Count	Organization	Type	Portal Participation Agreement	Training*	Portal Live*	ENS Live*	PDMP Access
671	John Whittaker, LLC	Ambulatory		Mar-14			Mar-14
672	Johns Hopkins Bayview Medical Center	Hospital	Aug-11	Apr-12	Apr-12	Mar-14	Nov-13
673	Johns Hopkins Community Physicians	Ambulatory	Apr-12	Apr-12	Apr-12	Sep-12	Feb-14
674	Johns Hopkins HealthCare	Payor	Nov-12	May-13			
675	Johns Hopkins Healthcare Priority Partners	Payor	Nov-12			Jan-13	
676	Johns Hopkins Home Care	Long Term Care		Jan-14			Jan-14
677	Johns Hopkins Hospital	Hospital	Aug-11	Jul-12	Jul-12		Nov-13
678	Johns Hopkins Outpatient Pharmacy	Pharmacy		Jun-14			Jun-14
679	Johns Hopkins Outpatient Pharmacy at the Arcade	Pharmacy		Jan-14			Jan-14
680	Johnson Family Pharmacy	Pharmacy		Mar-14			Mar-14
681	Johnston Family Medicine	Ambulatory	May-13	Mar-13	Jul-13		Nov-13
682	Jon E Simon MD LLC	Ambulatory	May-14	May-14			May-14
683	Jones Falls Psych Associates	Ambulatory		Jun-14			Jun-14
684	Joshi & Merchant MD,PA	Ambulatory		Jun-14			Jun-14
685	JP Clarke and Associates,LLC	Ambulatory		Apr-14			Apr-14
686	Julius Boateng, M.D.	Ambulatory	Feb-14				
687	Jyoti Behl MD PA	Ambulatory		Jun-14			Jun-14
688	Kaiser Permanente	Ambulatory	Mar-14				
689	Kaiser Permanente - Mid Atlantic Permanente Medical Group	Ambulatory	Kaiser Permanente	Apr-14			Apr-14
690	Kaiser Permanente Annapolis Pharmacy	Pharmacy	Kaiser Permanente	Apr-14			Apr-14
691	Kaiser Permanente Camp Springs Pharmacy	Pharmacy	Kaiser Permanente	Apr-14			Apr-14
692	Kaiser Permanente Columbia Gateway	Ambulatory	Kaiser Permanente	Apr-14			Apr-14
693	Kaiser Permanente Gaithersburg Infusion	Pharmacy	Kaiser Permanente	Apr-14			Apr-14
694	Kaiser Permanente Gaithersburg Medical Center	Ambulatory	Kaiser Permanente	Apr-14			Apr-14
695	Kaiser Permanente Gaithersburg Pharmacy	Pharmacy	Kaiser Permanente	Apr-14			Feb-14
696	Kaiser Permanente Hopkins Plaza	Pharmacy	Kaiser Permanente	May-14			May-14
697	Kaiser Permanente Infusion Pharmacy	Pharmacy	Kaiser Permanente	Apr-14			Apr-14
698	Kaiser Permanente Kensington Pharmacy	Pharmacy	Kaiser Permanente	Jan-14			Jan-14
699	Kaiser Permanente Largo	Pharmacy	Kaiser Permanente	Apr-14			Apr-14
700	Kaiser Permanente Largo Pharmacy	Pharmacy	Kaiser Permanente	Jun-14			Jun-14
701	Kaiser Permanente Marlow Heights	Pharmacy	Kaiser Permanente	Apr-14			Apr-14
702	Kaiser Permanente Medical Center	Ambulatory	Kaiser Permanente	Apr-14			Apr-14
703	Kaiser Permanente Pharmacy	Pharmacy	Kaiser Permanente	Feb-14			Mar-14
704	Kaiser Permanente Severna Park Pharmacy	Pharmacy	Kaiser Permanente	Feb-14			Feb-14
705	Kaiser Permanente Shady Grove	Pharmacy	Kaiser Permanente	Apr-14			Apr-14
706	Kaiser Permanente South Baltimore Co Pharmacy	Pharmacy	Kaiser Permanente	Jan-14			Jan-14
707	Kaiser Permanente Towson Medical Center	Ambulatory	Kaiser Permanente	Apr-14			Apr-14
708	Kaiser Permanente Towson Pharmacy	Pharmacy	Kaiser Permanente	Apr-14			Apr-14
709	Kaiser Permanente White Marsh Medical Center	Ambulatory	Kaiser Permanente	Mar-14			Mar-14
710	Kaiser Permanente Woodlawn Pharmacy	Pharmacy	Kaiser Permanente	Apr-14			Apr-14
711	Karl Spector, MD & Associates	Ambulatory		Feb-14			Feb-14
712	Key Point Health	Ambulatory		Apr-14			Apr-14
713	Kidney Health Center of Maryland, P.A.	Ambulatory	Dec-13	Apr-14	Apr-14		Apr-14
714	Kingdom Medicine P.A.	Ambulatory	Mar-13	Mar-13	Mar-13		Nov-13
715	Kingsway Care Pharmacy	Pharmacy		May-14			May-14

## CRISP Portal, ENS & PDMP Adoption by Facility

Count	Organization	Type	Portal Participation Agreement	Training*	Portal Live*	ENS Live*	PDMP Access
716	Kmart Pharmacy	Pharmacy		Feb-14			Feb-14
717	Kmart Pharmacy #3146	Pharmacy		Feb-14			Feb-14
718	Kmart Pharmacy #3167	Pharmacy		May-14			May-14
719	Kmart Pharmacy #3172	Pharmacy		Mar-14			Mar-14
720	Kmart Pharmacy #3237	Pharmacy		Apr-14			Apr-14
721	Kmart Pharmacy #3277	Pharmacy		Mar-14			Mar-14
722	Kmart Pharmacy #3796	Pharmacy		Mar-14			Mar-14
723	Kmart Pharmacy #7673	Pharmacy		Mar-14			Mar-14
724	Kmart Pharmacy #9524	Pharmacy		Jan-14			Jan-14
725	Kolmac Clinic	Ambulatory		Apr-14			Apr-14
726	Krishan K. Singal, MD	Ambulatory	Dec-13				
727	Kure Pain Management	Ambulatory		Jan-14			Jan-14
728	L. Y. Postman, M.D., P.A.	Ambulatory		Jun-14			Jun-14
729	Labcorp	Laboratory	Sep-12				
730	Lafferman and Associates	Ambulatory		Jun-14			Jun-14
731	Landmark Medical Group	Ambulatory	May-14	Jun-14			Jun-14
732	Lantern Therapeutic Services Inc	Ambulatory		May-14			May-14
733	Laurel Medical Associates	Ambulatory	Jul-13				
734	Laurel Pharmacy	Pharmacy		Jun-14			Jun-14
735	Laurel Regional Hospital	Hospital	Jan-12	Jul-13	Sep-13		Nov-13
736	Lavale Pharmacy	Pharmacy		Feb-14			Feb-14
737	Leisure World	Long Term Care	Jul-11	Nov-11	Dec-11		
738	Levindale	Long Term Care	LifeBridge Health	Jun-14	Jun-14		Jun-14
739	LifeBridge Health	Health System	Oct-10	Sep-12	Sep-12		May-14
740	LifeBridge Health - Sinai Ambulatory Practice	Ambulatory	LifeBridge Health			Jun-13	
741	Lifestream Health	Ambulatory		Feb-14			Feb-14
742	Linda Freilich, MD	Ambulatory		Jun-14			Jun-14
743	Lisa R. Halpern MD	Ambulatory		Mar-14			Mar-14
744	Lois A. Narr, D.O.	Ambulatory	Sep-13	Sep-13			
745	Lois M. Conn, M.D.	Ambulatory		Apr-14			Apr-14
746	Long View Nursing Home	Long Term Care	Mar-12	Apr-12			
747	Lorien Bel Air	Long Term Care	Lorien Health	May-12	May-12		
748	Lorien Columbia	Long Term Care	Lorien Health				
749	Lorien Encore at Turf Valley	Long Term Care	Lorien Health				
750	Lorien Health	Long Term Care	Jan-12				
751	Lorien Mays Chapel	Long Term Care	Lorien Health				
752	Lorien Mt. Airy	Long Term Care	Lorien Health				
753	Lorien Riverside	Long Term Care	Lorien Health				
754	Lorien Taneytown	Long Term Care	Lorien Health				
755	Lower Shore ACO	Ambulatory	Aug-13				
756	Lutherville Personal Physicians	Ambulatory	Mercy Medical Center	May-14		May-14	May-14
757	Lynch Primary Care	Ambulatory	Feb-14			Apr-14	
758	Lyons Pharmacy	Pharmacy		Jun-14			Jun-14
759	MacPhail Pharmacy	Pharmacy		Jan-14			Jan-14
760	Magnolia Management	Long Term Care	Mar-11				
761	Mahendra S Khera, M.D.	Ambulatory		May-14			May-14
762	Man Alive	Ambulatory	Sep-13	Dec-13	Dec-13		Dec-13
763	Manchester Medical Group, LLC	Ambulatory	Mar-13	Mar-13	Mar-13		Nov-13
764	Manchester Pharmacy	Pharmacy		Apr-14			Apr-14
765	Maple Shade Youth & Family Services	Ambulatory	Oct-13				
766	Marc D Sokolow MD	Ambulatory	May-14	Jun-14			Jun-14
767	Marie A. Dobyms, MD, PA	Ambulatory	Jul-13	Jul-13	Sep-13	Aug-13	Nov-13
768	Marion Pharmacy	Pharmacy		Jun-14			Jun-14
769	Martin's Food Market #6003	Pharmacy		Mar-14			Mar-14
770	Martins Food Markets	Pharmacy		Feb-14			Feb-14
771	Martins Pharmacy #6104	Pharmacy		Feb-14			Feb-14
772	Martins Pharmacy #6275	Pharmacy		Mar-14			Mar-14
773	Maryann D. Moore, MD, PA	Ambulatory		May-14			May-14
774	Maryland Accountable Care Organization of the Eastern Shore	Ambulatory	Aug-13				
775	Maryland Accountable Care Organization of Western Maryland	Ambulatory	Aug-13				
776	Maryland Addiction Recovery Center	Ambulatory		Apr-14			Apr-14
777	Maryland Advanced Arthritis and Rheumatology Center	Ambulatory		Jun-14			Jun-14
778	Maryland Brain & Spine	Ambulatory		Jun-14			Jun-14
779	Maryland Department of Health and Mental Hygiene	Government Agency	Dec-12				
780	Maryland Department of Public Safety and Correctional Services	Government Agency	Dec-12				

## CRISP Portal, ENS & PDMP Adoption by Facility

Count	Organization	Type	Portal Participation Agreement	Training*	Portal Live*	ENS Live*	PDMP Access
781	Maryland Healing Waters	Ambulatory		Jun-14			Jun-14
782	Maryland Kidney Group, PA	Ambulatory	Sep-12	Jul-13	Jul-13		Nov-13
783	Maryland Oncology And Hematology	Ambulatory	Jan-13				
784	Maryland Oncology And Hematology- Wheaton	Ambulatory	Jan-13	Jan-13	Jan-13		Nov-13
785	Maryland Open MRI	Radiology	Nov-12				
786	Maryland Orthopedics, P.A.	Ambulatory		Jun-14			Jun-14
787	Maryland Pain & Spine Center, LLC	Ambulatory		Jan-14			Jan-14
788	Maryland Pain Specialists	Ambulatory		Jan-14			Jan-14
789	Maryland Primary Care Physicians	Ambulatory	Apr-13	Apr-13	Apr-13		Jan-14
790	Maryland Rehab and Pain	Pharmacy		Feb-14			Feb-14
791	Maryland Spine and Sports Medicine, P.C.	Ambulatory		Feb-14			Feb-14
792	Massumi Associates	Ambulatory		Apr-14			Apr-14
793	Maximum Day Services	Long Term Care	Jun-14	Jun-14			Jun-14
794	Mazique Pediatrics, PC	Ambulatory	Jan-13	Jan-13	Jan-13		
795	McKays Pharmacy	Pharmacy		Feb-14			Feb-14
796	MD Laser Medicine & Surgery	Ambulatory	Aug-13				
797	Med One Pharmacy - Boonsboro	Pharmacy		Apr-14			Apr-14
798	Med One Pharmacy - Middletown	Pharmacy		Mar-14			Mar-14
799	Med One Pharmacy - Thurmont	Pharmacy		Apr-14			Apr-14
800	Med One Pharmacy - Woodbine	Pharmacy		Feb-14			Feb-14
801	Medpeds	Ambulatory	May-12	Jul-12	Jul-12	Dec-12	Mar-14
802	Medpsych Health Services	Ambulatory		Apr-14			Apr-14
803	Medstar	Health System	Jun-11				
804	MedStar Family Choice	FQHC	MedStar			Dec-13	
805	Medstar Franklin Square Medical Center	Hospital	MedStar	Jul-12	Jul-12	Jan-14	Nov-13
806	Medstar Good Samaritan Hospital	Hospital	MedStar	Jun-12	Jun-12		Nov-13
807	Medstar Harbor Hospital	Hospital	MedStar	Mar-12	Mar-12	Aug-12	Nov-13
808	MedStar Medical Group	Ambulatory	MedStar	Feb-13	Feb-13		Nov-13
809	Medstar Montgomery Medical Center	Hospital	Jun-12	Dec-11	Dec-11		Nov-13
810	Medstar Pharmacy Store #3	Pharmacy		Jan-14			Jan-14
811	Medstar Pharmacy Store #4	Pharmacy		Jan-14			Jan-14
812	Medstar Pharmacy Store #6	Pharmacy		Jan-14			Jan-14
813	Medstar Pharmacy Store #7	Pharmacy		Jan-14			Jan-14
814	MedStar Promptcare	Ambulatory	MedStar				
815	Medstar Southern Maryland Hospital Center	Hospital	Aug-11	Feb-13	Feb-13		Apr-14
816	Medstar St. Mary's Hospital	Hospital	MedStar	May-13	Jun-13		
817	Medstar Union Memorial Hospital	Hospital	MedStar	May-12	May-12		Nov-13
818	Melvin Weissburg, D.M.D.	Ambulatory		May-14			May-14
819	Memorial Care Center	Ambulatory		Jan-14			Jan-14
820	Menocal Medical Services PA	Ambulatory		Feb-14			Feb-14
821	Mercy Medical Center	Hospital	Sep-11	Aug-12	Aug-12	Jun-14	Nov-13
822	Meridian Primary Care	Ambulatory	Mar-14	Mar-14	Mar-14		Mar-14
823	Meritus Medical Center	Hospital	Nov-11	Sep-12	Sep-12		Nov-13
824	Metro Immediate and Primary care	Ambulatory		Jun-14			Jun-14
825	Metro Renal Associates	Ambulatory		Apr-14			Apr-14
826	Metropolitan Medical Specialists	Ambulatory	Mar-14	Jun-14	Jun-14		Jun-14
827	Mian Family Medicine, LLC	Ambulatory	Mar-11	Dec-11	Dec-11		Nov-13
828	Michael April & Associates	Ambulatory		Jan-14			Jan-14
829	Michael Crouch, M.D., P.A.	Ambulatory		Mar-14			Mar-14
830	Michael Gray, MD, PC	Ambulatory		Apr-14			Apr-14
831	Michael Randolph M.D., PC	Ambulatory	Oct-12	Oct-13	Oct-13		Nov-13
832	Michael Sullivan	Ambulatory		May-14			May-14
833	Mid Atlantic Neurology Consultants	Ambulatory	May-14				
834	Mid Atlantic Neurosurgical Associates	Ambulatory		Apr-14			Apr-14
835	Mid Atlantic Pain Institute	Ambulatory		Jan-14			Jan-14
836	Mid-Atlantic Berlin Nursing and Rehabilitation Center	Long Term Care	May-13	Aug-13	Sep-13	Sep-13	
837	Mid-Atlantic Chapel Hill Nursing & Rehab Center	Long Term Care	Mar-12				
838	Mid-Atlantic Fairfield Nursing and Rehabilitation	Long Term Care	Mar-12				
839	Mid-Atlantic Nephrology Associates, P.A.	Ambulatory	Sep-13	Sep-13	Oct-13		Nov-13
840	Mid-Atlantic Oakland Nursing & Rehab Center	Long Term Care	Mar-12				
841	Mid-Atlantic Pain Medicine Center	Ambulatory	Aug-13	Sep-13	Sep-13		Nov-13

## CRISP Portal, ENS & PDMP Adoption by Facility

Count	Organization	Type	Portal Participation Agreement	Training*	Portal Live*	ENS Live*	PDMP Access
842	Mid-Atlantic Villa Rosa Nursing Home	Long Term Care	Mar-12				
843	Middletown Valley Family Medicine, P.A.	Ambulatory	Oct-13	Oct-13	Oct-13		Nov-13
844	Mikhail Gendel Family Practice	Ambulatory		Jan-14			Jan-14
845	Milestone Pediatrics, PA	Ambulatory	Jun-14				
846	Milford Street Pharmacy	Pharmacy		Jun-14			Jun-14
847	Mitchell Gittelman, DO,PA	Ambulatory	Dec-13	Jan-14	Jan-14		Jan-14
848	Mobile Medical Care, Inc.	Ambulatory		Jun-14			Jun-14
849	Mody & Miller MD PA	Ambulatory	Jan-13				
850	MOH-Silver Spring	Ambulatory	Jan-13	Jun-14	Jun-14		Jun-14
851	Monocacy Emergency Physicians	Ambulatory		Jan-14			Mar-14
852	Montague Blundon, M.D.	Ambulatory		Jan-14			Jan-14
853	Montgomery County Medication Assisted Treatment Program	Ambulatory		Jan-14			Mar-14
854	Montgomery Hospice	Long Term Care		Jun-14			Jun-14
855	Montgomery Medical Associates P.C.	Ambulatory	May-13	Jun-13	Nov-13	Nov-13	Nov-13
856	Montgomery Oncology Care and Hematology	Ambulatory		Jan-14			Jan-14
857	Montgomery Otolaryngology Consultants	Ambulatory	May-14	Jun-14			Jun-14
858	Montgomery Recovery Services	Ambulatory	Sep-13	Oct-13	Sep-13	Nov-13	
859	Montgomery Village Pain and Rehabilitation Center	Ambulatory		Jan-14			Jan-14
860	Mosaic Community Services	Ambulatory	Jan-13	Jan-13	Jan-13	Dec-13	Nov-13
861	Motamedi & Associates Internal Medicine	Ambulatory		May-14			May-14
862	Mountain Laurel Medical Center	FQHC	Apr-12	Jun-12	Jun-12		
863	Mountain Manor Treatment Center	Ambulatory		Mar-14			Mar-14
864	MPCP Annapolis	Ambulatory		Jun-14	Jun-14		Jun-14
865	MPCP Arnold	Ambulatory		Apr-14	Apr-14		Apr-14
866	MPCP Columbia	Ambulatory		Feb-13	Sep-13		Nov-13
867	MPCP Pasadena	Ambulatory		May-14	May-14		May-14
868	MPCP Queenstown	Ambulatory		Jun-14	Jun-14		Jun-14
869	MS Shariff, MD PA	Ambulatory		May-14			May-14
870	Mt Vernon Pharmacy	Pharmacy		Feb-14			Feb-14
871	Mt. Washington Pediatric Hospital	Hospital	Jun-11	Apr-14	Apr-14		Apr-14
872	Multi-specialty Healthcare	Ambulatory		Apr-14			Apr-14
873	Mulvey Family Practice	Ambulatory	May-14				
874	Mulveys Preston Pharmacy	Pharmacy		May-14			May-14
875	My Family Medical Care Center	Ambulatory	Jun-14				
876	N.B. Vellanki, MD	Ambulatory	Apr-13				
877	National Spine and Pain Centers	Ambulatory		Dec-13			Jan-14
878	Natural Family Wellness	Ambulatory	May-12	Apr-12	Apr-12	Dec-13	
879	Naturecare Pharmacy	Pharmacy		Mar-14			Mar-14
880	Neibauer Dental Care	Ambulatory		Jun-14			Jun-14
881	Neighborcare - Riderwood	Pharmacy		Jan-14			Jan-14
882	Neighborcare Howard Co General Hosp	Pharmacy		Sep-13			Nov-13
883	Neighborcare Pharmacy	Pharmacy		Jan-14			Jan-14
884	Neighborhood Wellness	Ambulatory		Apr-14			Apr-14
885	Neil E. Lattin, MD LLC	Ambulatory	Aug-12	Aug-12	Aug-12		Nov-13
886	Nephrology Associates PA	Ambulatory	Mar-13	Apr-13	Apr-13		Feb-14
887	Nephrology Center of Maryland	Ambulatory	Jan-12				
888	Newbridge Spine and Pain Center, LLC	Ambulatory		Jun-14			Jun-14
889	Nicholette Martin-Davis,MD LLC	Ambulatory		Apr-14			Apr-14
890	Nirmaladevi Jayanthan, MD PA	Ambulatory		Jun-14			Jun-14
891	NMS Healthcare Annapolis	Long Term Care		May-13	May-13		
892	NMS Healthcare Facilities	Long Term Care	May-13			Jul-13	
893	NMS Healthcare Hagerstown	Long Term Care		May-13	May-13		

## CRISP Portal, ENS & PDMP Adoption by Facility

Count	Organization	Type	Portal Participation Agreement	Training*	Portal Live*	ENS Live*	PDMP Access
894	NMS Healthcare Hyattsville	Long Term Care	NMS Healthcare Facilities	May-13	May-13		Nov-13
895	NMS Silver Spring	Long Term Care	NMS Healthcare Facilities				
896	Northgate Pharmacy Inc	Pharmacy		Feb-14			Mar-14
897	Northwest Hospital Center	Hospital	Jan-12	Sep-12	Sep-12	Jun-14	Nov-13
898	Nova Interventional Pain Management	Ambulatory		Feb-14			Feb-14
899	Oakcrest	Long Term Care	Sep-11				
900	Olney Professional Pharmacy Inc	Pharmacy		Jan-14			Jan-14
901	Omni Medical Center	Ambulatory	Nov-12	Oct-12	Nov-12		
902	Omnicare of Salisbury	Pharmacy		Oct-13			Nov-13
903	OMS Services	Ambulatory		Jun-14			Jun-14
904	Opal Medical Group	Ambulatory		Jun-14			Jun-14
905	Optimum Health Systems Inc.	Ambulatory	Dec-13	Dec-13	Dec-13		Dec-13
906	Orchard Pharmacy	Pharmacy		Mar-14			Mar-14
907	OrthoBethesda	Ambulatory	Feb-13				
908	OrthoMaryland	Ambulatory		Mar-14			Mar-14
909	Owensville Primary Care, Inc.	FQHC	Sep-13	Aug-13	Sep-13		Nov-13
910	P.G. Wellness Center	Ambulatory		May-14			May-14
911	Padek Healthcare Pharmacy LLC	Pharmacy		Mar-14			Mar-14
912	Pain Management Institute	Ambulatory		Mar-14			Mar-14
913	Pain Management Specialists	Ambulatory		Jan-14			Jan-14
914	Pain Medicine and Rehab Services	Ambulatory		Feb-14			Feb-14
915	Pain, Spine & Rehab Associates	Ambulatory		Mar-14			Mar-14
916	Paraclete Care	Ambulatory	Apr-14	Apr-14	Jun-14		Apr-14
917	Park Medical Associates	Ambulatory	Dec-13	Dec-13	Jan-14		Jan-14
918	Park Pharmacy Inc	Pharmacy		Feb-14			Feb-14
919	Park West Health System, Inc.	FQHC	Apr-14			May-14	
920	Parkview Medical Group	Ambulatory	Jun-11	Apr-14	Apr-14		Apr-14
921	Parkway Neuroscience and Spine Institute	Ambulatory		Jan-14			Jan-14
922	Pasadena Pharmacy	Pharmacy		May-14			May-14
923	Patient First	Ambulatory		Apr-14			Apr-14
924	Patricia M. Sullivan, MD	Ambulatory	Jan-14	Feb-14			Feb-14
925	Patuxent Place Family Dentistry	Ambulatory		Jun-14			Jun-14
926	Paul Katz, DO	Ambulatory		Feb-14			Feb-14
927	Paul T. Barbera MD, PA	Ambulatory	Jan-14	Jan-14	Jan-14		Jan-14
928	P-B Health Home Care Agency, Inc.	Long Term Care	Jun-14				
929	Pediatric & Adolescent Care of Silver Spring	Ambulatory	Dec-13	Feb-14	Feb-14	Apr-14	Feb-14
930	Pediatric & Adolescent Care, P.A.	Ambulatory	May-14	Jun-14			Jun-14
931	Pediatric Associates of Montgomery County	Ambulatory	Apr-14	Apr-14	Apr-14		Apr-14
932	Pediatrics At The Harbor	Ambulatory	University of Maryland Medical Center			Jul-13	
933	Pemberton Pharmacy	Pharmacy		May-14			May-14
934	Peninsula Orthopaedic Associates	Ambulatory		Mar-14			Mar-14
935	Peninsula Regional Medical Center	Hospital	Nov-12	May-13	Sep-13		Nov-13
936	Peninsula Regional Medical Group	Ambulatory		Apr-14			Apr-14
937	Peninsula Regional Neurosurgery	Ambulatory		Apr-14			Apr-14
938	People Encouraging People, Inc.	Ambulatory	Apr-13	Jul-13	Jul-13	Jul-13	Nov-13
939	Perkis and Ferez Family Medicine	Ambulatory	Mar-14	Apr-14	Oct-13		Apr-14
940	Philip G. Henjum, M.D.	Ambulatory		Jun-14			Jun-14
941	Philip Konits MD LLC	Ambulatory	Jan-14	Apr-13	Jan-14		Jan-14
942	Phoenix Health Center	Ambulatory		Jan-14			Jan-14
943	PHS Fort Lincoln Family Medicine	Ambulatory	Nov-13	Feb-14	Feb-14	Feb-14	Feb-14
944	Physical Medicine & Pain Management Associates, P.C.	Ambulatory		Jan-14			Jan-14
945	Physician Associates	Ambulatory		Apr-14			Apr-14
946	Physicians House Calls	Long Term Care	Sep-13	Sep-13	Sep-13	Dec-13	Nov-13
947	Piccard Surgery Center, LLC	Ambulatory	Nov-13	May-13	May-13		
948	Pittsville Pharmacy - E Old Ocean City	Pharmacy		Jan-14			Jan-14
949	Poolesville Family Practice	Ambulatory	Mar-12	Jul-12	Jul-12		Nov-13
950	Positive Progression	Ambulatory		Apr-14			Apr-14
951	Potomac Obstetrics and Gynecology	Ambulatory	Mar-13	Mar-13	Mar-13		
952	Potomac Pain & Rehab	Ambulatory		Apr-14			Apr-14
953	Potomac Physician Associates	Ambulatory	Jun-11	Dec-11	Dec-11	Oct-12	Mar-14
954	Potomac Physician Associates Bethesda	Ambulatory	Jun-11	Jun-11	Jun-11		Nov-13

## CRISP Portal, ENS & PDMP Adoption by Facility

Count	Organization	Type	Portal Participation Agreement	Training*	Portal Live*	ENS Live*	PDMP Access
955	Potomac Physician Associates Germantown	Ambulatory	Jun-11	Apr-13	Apr-13		Feb-14
956	Potomac Physician Associates Kensington	Ambulatory	Jun-11	May-13	Jun-13		Feb-14
957	Potomac Physicians PA	Ambulatory	Oct-12	Oct-12	Oct-12	Mar-13	Nov-13
958	Potomac Prompt Medical Care	Ambulatory		Jan-14			Jan-14
959	Potomac Valley Nursing & Wellness Ctr	Long Term Care	Jun-12	Jun-12	Jun-12		
960	PR Family Medicine	Ambulatory		Jan-14			Jan-14
961	Prafull Patel, MD, LLC	Ambulatory	Oct-13	Nov-13	Nov-13		Nov-13
962	Preetinder Sandhu, M.D.	Ambulatory		Apr-14			Apr-14
963	Pregnancy Aid Center	Ambulatory	Apr-13	Apr-13	Jun-13		
964	Preston Family Physicians	Ambulatory		Apr-14			Apr-14
965	Primary Care Coalition of Mont. County	FQHC	Nov-11	Jun-12	Jun-12		Jun-14
966	Prince George's County Health Department	Government Agency	May-13				
967	Prince George's Hospital Center	Hospital	Jul-12	Apr-13	Apr-13		Nov-13
968	Priority Care Clinic	Pharmacy		Jan-14			Jan-14
969	Priority Care Clinics	Ambulatory		Feb-14			Feb-14
970	Professional Pharmacy of Essex	Pharmacy		Sep-13			Nov-13
971	Progressive Radiology	Radiology	Dec-11	May-12	May-12		
972	Prologue Inc.	Ambulatory	Aug-13	Aug-13	Sep-13	Jun-14	
973	Proyecto Salud Clinic	Ambulatory	May-13	Jun-13	Nov-13	Apr-14	Nov-13
974	Psych Associates of MD	Ambulatory		Apr-14			Apr-14
975	Psychiatry Center of Frederick	Ambulatory		Jan-14			Jan-14
976	Psychotherapeutic Services	Ambulatory	Aug-13	Aug-13		Nov-13	
977	Quarterfield Pharmacy	Pharmacy		Feb-14			Feb-14
978	Quarterfield Pharmacy	Pharmacy		Feb-14			Feb-14
979	Queen Anne's Emergency Center	Ambulatory	Aug-11				
980	Quest Diagnostics	Laboratory	Sep-12				
981	Radiation Physics	Radiology	Nov-12	Aug-13			
982	RadNet	Radiology	Sep-10	Nov-11	Mar-12		
983	Randal Steele, DO	Pharmacy		Feb-14			Feb-14
984	Ravinder K. Rustagi M.D.	Pharmacy		Jan-14			Jan-14
985	REACH Health Services	Ambulatory	Sep-13	Sep-13	Sep-13		Dec-13
986	Reddix Family Health Care	Ambulatory	Jul-11				
987	Redner's Pharmacy - Bel Air	Pharmacy		Feb-14			Feb-14
988	Redners Pharmacy - Joppa	Pharmacy		May-14			May-14
989	Redner's Pharmacy #35	Pharmacy		Jan-14			Jan-14
990	Reeds Pharmacy #3	Pharmacy		Apr-14			Apr-14
991	Reesers Pharmacy Inc	Pharmacy		Mar-14			Mar-14
992	Regional Hematology & Oncology, P.A.	Ambulatory	Feb-14	Mar-14	Mar-14		Mar-14
993	Rehabilitation and Sports Medicine Associates	Ambulatory		Apr-14			Apr-14
994	Rehab Smartcenter	Ambulatory		Apr-14			Apr-14
995	Remedi Senior Care	Pharmacy		Jun-14			Jun-14
996	Rheumatology Associates of Baltimore	Ambulatory	Jun-13	Oct-13	Oct-13	Aug-13	
997	Richard Bombach, MD	Ambulatory		Apr-14			Apr-14
998	Riderwood	Long Term Care	Sep-11				
999	Righttime Medical Care	Ambulatory	Mar-11	Apr-14	Apr-14		Apr-14
1000	Ritchie Pharmacy	Pharmacy		Apr-14			Apr-14
1001	Rite Aid #0104	Pharmacy		May-14			May-14
1002	Rite Aid #0278	Pharmacy		Apr-14			Apr-14
1003	Rite Aid #0287	Pharmacy		Apr-14			Apr-14
1004	Rite Aid #0314	Pharmacy		May-14			May-14
1005	Rite Aid #0318	Pharmacy		May-14			May-14
1006	Rite Aid #0319	Pharmacy		May-14			May-14
1007	Rite Aid #0324	Pharmacy		Sep-13			Nov-13
1008	Rite Aid #0326	Pharmacy		May-14			May-14
1009	Rite Aid #0334	Pharmacy		Apr-14			Apr-14
1010	Rite Aid #0336	Pharmacy		May-14			May-14
1011	Rite Aid #0337	Pharmacy		May-14			May-14
1012	Rite Aid #0339	Pharmacy		Apr-14			Apr-14
1013	Rite Aid #0347	Pharmacy		May-14			May-14
1014	Rite Aid #0349	Pharmacy		Apr-14			Apr-14
1015	Rite Aid #0350	Pharmacy		May-14			May-14
1016	Rite Aid #0355	Pharmacy		May-14			May-14
1017	Rite Aid #0356	Pharmacy		May-14			May-14
1018	Rite Aid #0362	Pharmacy		May-14			May-14

## CRISP Portal, ENS & PDMP Adoption by Facility

Count	Organization	Type	Portal Participation Agreement	Training*	Portal Live*	ENS Live*	PDMP Access
1019	Rite Aid #0365	Pharmacy		Apr-14			Apr-14
1020	Rite Aid #0366	Pharmacy		May-14			May-14
1021	Rite Aid #0369	Pharmacy		Jun-14			Jun-14
1022	Rite Aid #0372	Pharmacy		May-14			May-14
1023	Rite Aid #0373	Pharmacy		May-14			May-14
1024	Rite Aid #0374	Pharmacy		Apr-14			Apr-14
1025	Rite Aid #0377	Pharmacy		Jun-14			Jun-14
1026	Rite Aid #0381	Pharmacy		May-14			May-14
1027	Rite Aid #0382	Pharmacy		Apr-14			Apr-14
1028	Rite Aid #03827	Pharmacy		Jun-14			Jun-14
1029	Rite Aid #0383	Pharmacy		May-14			May-14
1030	Rite Aid #0384	Pharmacy		Jun-14			Jun-14
1031	Rite Aid #0385	Pharmacy		May-14			May-14
1032	Rite Aid #0386	Pharmacy		May-14			May-14
1033	Rite Aid #03872	Pharmacy		Jun-14			Jun-14
1034	Rite Aid #0391	Pharmacy		Apr-14			Apr-14
1035	Rite Aid #0392	Pharmacy		May-14			May-14
1036	Rite Aid #0476	Pharmacy		May-14			May-14
1037	Rite Aid #0482	Pharmacy		Apr-14			Apr-14
1038	Rite Aid #0489	Pharmacy		Apr-14			Apr-14
1039	Rite Aid #1086	Pharmacy		Jan-14			Jan-14
1040	Rite Aid #11197	Pharmacy		Apr-14			Apr-14
1041	Rite Aid #11198	Pharmacy		Apr-14			Apr-14
1042	Rite Aid #11199	Pharmacy		May-14			May-14
1043	Rite Aid #11200	Pharmacy		May-14			May-14
1044	Rite Aid #11201	Pharmacy		May-14			May-14
1045	Rite Aid #11202	Pharmacy		Apr-14			Apr-14
1046	Rite Aid #11203	Pharmacy		Apr-14			Apr-14
1047	Rite Aid #11204	Pharmacy		Jan-14			Jan-14
1048	Rite Aid #11206	Pharmacy		Apr-14			Apr-14
1049	Rite Aid #11208	Pharmacy		May-14			May-14
1050	Rite Aid #11209	Pharmacy		May-14			May-14
1051	Rite Aid #11210	Pharmacy		Apr-14			Apr-14
1052	Rite Aid #11211	Pharmacy		May-14			May-14
1053	Rite Aid #11212	Pharmacy		Apr-14			Apr-14
1054	Rite Aid #11213	Pharmacy		Nov-13			Nov-13
1055	Rite Aid #11218	Pharmacy		May-14			May-14
1056	Rite Aid #11219	Pharmacy		Apr-14			Apr-14
1057	Rite Aid #1324	Pharmacy		May-14			May-14
1058	Rite Aid #1490	Pharmacy		May-14			May-14
1059	Rite Aid #1721	Pharmacy		May-14			May-14
1060	Rite Aid #1757	Pharmacy		Apr-14			Apr-14
1061	Rite Aid #1760	Pharmacy		May-14			May-14
1062	Rite Aid #1859	Pharmacy		Apr-14			Apr-14
1063	Rite Aid #1978	Pharmacy		Jun-14			Jun-14
1064	Rite Aid #2120	Pharmacy		May-14			May-14
1065	Rite Aid #2204	Pharmacy		May-14			May-14
1066	Rite Aid #2205	Pharmacy		May-14			May-14
1067	Rite Aid #2207	Pharmacy		May-14			May-14
1068	Rite Aid #2209	Pharmacy		May-14			May-14
1069	Rite Aid #2210	Pharmacy		Apr-14			Apr-14
1070	Rite Aid #2212	Pharmacy		Apr-14			Apr-14
1071	Rite Aid #2214	Pharmacy		Oct-13			Nov-13
1072	Rite Aid #2217	Pharmacy		Apr-14			Apr-14
1073	Rite Aid #2220	Pharmacy		May-14			May-14
1074	Rite Aid #2223	Pharmacy		May-14			May-14
1075	Rite Aid #2231	Pharmacy		May-14			May-14
1076	Rite Aid #2235	Pharmacy		Apr-14			Apr-14
1077	Rite Aid #2253	Pharmacy		Apr-14			Apr-14
1078	Rite Aid #2280	Pharmacy		May-14			May-14
1079	Rite Aid #2585	Pharmacy		May-14			May-14
1080	Rite Aid #2690	Pharmacy		Apr-14			Apr-14
1081	Rite Aid #2750	Pharmacy		May-14			May-14
1082	Rite Aid #2752	Pharmacy		Apr-14			Apr-14
1083	Rite Aid #3000	Pharmacy		Apr-14			Apr-14
1084	Rite Aid #3205	Pharmacy		Jun-14			Jun-14
1085	Rite Aid #3339	Pharmacy		May-14			May-14
1086	Rite Aid #3751	Pharmacy		May-14			May-14
1087	Rite Aid #3752	Pharmacy		Apr-14			Apr-14
1088	Rite Aid #3757	Pharmacy		Apr-14			Apr-14
1089	Rite Aid #3758	Pharmacy		Apr-14			Apr-14
1090	Rite Aid #3761	Pharmacy		Jun-14			Jun-14

## CRISP Portal, ENS & PDMP Adoption by Facility

Count	Organization	Type	Portal Participation Agreement	Training*	Portal Live*	ENS Live*	PDMP Access
1091	Rite Aid #3781	Pharmacy		Apr-14			Apr-14
1092	Rite Aid #3782	Pharmacy		Apr-14			Apr-14
1093	Rite Aid #3790	Pharmacy		May-14			May-14
1094	Rite Aid #3794	Pharmacy		Jun-14			Jun-14
1095	Rite Aid #3799	Pharmacy		May-14			May-14
1096	Rite Aid #3803	Pharmacy		May-14			May-14
1097	Rite Aid #3806	Pharmacy		May-14			May-14
1098	Rite Aid #3808	Pharmacy		May-14			May-14
1099	Rite Aid #3813	Pharmacy		May-14			May-14
1100	Rite Aid #3818	Pharmacy		Apr-14			Apr-14
1101	Rite Aid #3822	Pharmacy		May-14			May-14
1102	Rite Aid #3826	Pharmacy		Apr-14			Apr-14
1103	Rite Aid #3827	Pharmacy		Apr-14			Apr-14
1104	Rite Aid #3828	Pharmacy		May-14			May-14
1105	Rite Aid #3831	Pharmacy		Apr-14			Apr-14
1106	Rite Aid #3835	Pharmacy		May-14			May-14
1107	Rite Aid #3836	Pharmacy		May-14			May-14
1108	Rite Aid #3837	Pharmacy		Apr-14			Apr-14
1109	Rite Aid #3868	Pharmacy		May-14			May-14
1110	Rite Aid #3871	Pharmacy		Jan-14			Jan-14
1111	Rite Aid #3872	Pharmacy		May-14			May-14
1112	Rite Aid #4005	Pharmacy		May-14			May-14
1113	Rite Aid #4248	Pharmacy		Apr-14			Apr-14
1114	Rite Aid #4250	Pharmacy		Apr-14			Apr-14
1115	Rite Aid #4255	Pharmacy		May-14			May-14
1116	Rite Aid #4295	Pharmacy		May-14			May-14
1117	Rite Aid #4575	Pharmacy		May-14			May-14
1118	Rite Aid #4597	Pharmacy		May-14			May-14
1119	Rite Aid #4665	Pharmacy		Apr-14			Apr-14
1120	Rite Aid #4686	Pharmacy		Jun-14			Jun-14
1121	Rite Aid #4729	Pharmacy		May-14			May-14
1122	Rite Aid #4810	Pharmacy		May-14			May-14
1123	Rite Aid #4909	Pharmacy		Apr-14			Apr-14
1124	Rite Aid #4912	Pharmacy		Apr-14			Apr-14
1125	Rite Aid #4915	Pharmacy		May-14			May-14
1126	Rite Aid #4917	Pharmacy		Apr-14			Apr-14
1127	Rite Aid #4920	Pharmacy		May-14			May-14
1128	Rite Aid #4942	Pharmacy		Apr-14			Apr-14
1129	Rite Aid #4983	Pharmacy		May-14			May-14
1130	Rite Aid #7766	Pharmacy		Apr-14			Apr-14
1131	Rite Aid #7773	Pharmacy		Apr-14			Apr-14
1132	Rite Aid #7840	Pharmacy		Jun-14			Jun-14
1133	Rite Aid #7932	Pharmacy		May-14			May-14
1134	Ritu Bhambhani, LLC	Ambulatory		Jan-14			Jan-14
1135	Riverside MCO	Payor	May-13			Jun-13	
1136	Robert M cooper MD LLC	Ambulatory		Jun-14			Jun-14
1137	Robert S. Goodwin	Ambulatory		Jun-14			Jun-14
1138	Robinwood Pain Center	Ambulatory	Nov-11	Apr-14	Apr-14		Apr-14
1139	Robyn F. James MD LLC	Ambulatory		May-14			May-14
1140	Rockville Geriatrics and Palliative Medicine	Long Term Care	Mar-12	Dec-13	Dec-13		Dec-13
1141	Rockville Internal Medicine Group	Ambulatory	Jul-11	Dec-11	Jul-12		Nov-13
1142	Roman Ostrovsky M.D	Ambulatory		Jan-14			Jan-14
1143	Rose Hill Family Physicians	Ambulatory	May-14				
1144	Rosen-Hoffberg Rehabilitation and Pain Management	Ambulatory		Jan-14			Jan-14
1145	Rozran & Spatz Orthopedics	Ambulatory	May-14	Jun-14			Jun-14
1146	Safe Choice Pharmacy	Pharmacy		Jun-14			Jun-14
1147	Safeway Pharmacy #0128	Pharmacy		Apr-14			Apr-14
1148	Safeway Pharmacy #1075	Pharmacy		Feb-14			Feb-14
1149	Safeway Pharmacy #1089	Pharmacy		Feb-14			Feb-14
1150	Safeway Pharmacy #1579	Pharmacy		Jun-14			Jun-14
1151	Safeway Pharmacy #1616	Pharmacy		Apr-14			Apr-14
1152	Safeway Pharmacy #1657	Pharmacy		Feb-14			Feb-14
1153	Safeway Pharmacy #1715	Pharmacy		Mar-14			Mar-14
1154	Safeway Pharmacy #1731	Pharmacy		Mar-14			Mar-14
1155	Safeway Pharmacy #1880	Pharmacy		May-14			May-14
1156	Safeway Pharmacy #1939	Pharmacy		Jun-14			Jun-14
1157	Safeway Pharmacy #2608	Pharmacy		Feb-14			Feb-14
1158	Safeway Pharmacy #2629	Pharmacy		Feb-14			Feb-14
1159	Safeway Pharmacy #2661	Pharmacy		Apr-14			Apr-14
1160	Safeway Pharmacy #2797	Pharmacy		Feb-14			Feb-14

## CRISP Portal, ENS & PDMP Adoption by Facility

Count	Organization	Type	Portal Participation Agreement	Training*	Portal Live*	ENS Live*	PDMP Access
1161	Safeway Pharmacy #2979	Pharmacy		Jun-14			Jun-14
1162	Saga Medical, Inc.	Ambulatory	Jan-13	Apr-14	Apr-14		Apr-14
1163	Sander G Genser, M.D.	Ambulatory		Jun-14			Jun-14
1164	Sante Group	Ambulatory	Nov-13				
1165	SAV-ON Pharmacy #7862	Pharmacy		May-14			May-14
1166	Scaria Mathew MD	Ambulatory	Feb-13	Feb-13	Feb-13		Nov-13
1167	Schindel's Pharmacy, Inc.	Pharmacy		May-14			May-14
1168	Scott Maurer, MD	Ambulatory	Jul-11				
1169	Season's Hospice	Long Term Care	Jun-12	Jul-12	Jul-12		
1170	Seidenberg Protzko Eye Associates	Ambulatory	Oct-12	Oct-12	Oct-12		
1171	Service Care Pharmacy	Pharmacy		Apr-14			Apr-14
1172	Seton Medical Group	Ambulatory	St. Agnes Hospital	May-13	May-13	Jun-13	Nov-13
1173	Seton Pain and Rehabilitation Center	Ambulatory		Feb-14			Feb-14
1174	Shady Grove Adventist Hospital	Hospital	Adventist Healthcare	Dec-11	Dec-11	Sep-13	Nov-13
1175	Shady Grove Adventist Radiation Oncology Center	Ambulatory	Mar-12	Jan-13	Nov-12		Dec-13
1176	Shady Grove Orthopedic Associates	Ambulatory		Jan-14			Jan-14
1177	Shady Grove Pharmacy	Pharmacy		Jun-14			Jun-14
1178	Shady Grove Radiology	Radiology	Feb-12	Dec-12	Dec-12		
1179	Shah Associates	Ambulatory	Dec-13	May-14	May-14	Jun-14	May-14
1180	Sharon M. Messics, MD	Ambulatory	Feb-13			May-13	
1181	Sharon Y Alongi MD PA	Ambulatory		Apr-14			Apr-14
1182	Sharpsburg Pharmacy	Pharmacy		Feb-14			Feb-14
1183	Shayona Pharmacy	Pharmacy		Mar-14			Mar-14
1184	Sheo P Sharma MD PA	Ambulatory		May-14			May-14
1185	Shepherd's Clinic	Hospital	Jan-11	Nov-11	Nov-11		May-14
1186	Sheppard Pratt Physician's P.A.	Ambulatory	Dec-13	May-14	May-14		May-14
1187	Shoppers Pharmacy #2256	Pharmacy		Apr-14			Apr-14
1188	Shoppers Pharmacy #2283/926	Pharmacy		Apr-14			Apr-14
1189	Shoppers Pharmacy #2286/933	Pharmacy		Jun-14			Jun-14
1190	Shoppers Pharmacy #2287/941	Pharmacy		Mar-14			Mar-14
1191	Shoppers Pharmacy #2290/951	Pharmacy		Mar-14			Mar-14
1192	Shoppers Pharmacy #2293/961	Pharmacy		Apr-14			Apr-14
1193	Shoppers Pharmacy #2332/970	Pharmacy		Jun-14			Jun-14
1194	Shoppers Pharmacy #2338/917	Pharmacy		Jun-14			Jun-14
1195	Shoppers Pharmacy #2362/946	Pharmacy		Jun-14			Jun-14
1196	Shoppers Pharmacy #2369/953	Pharmacy		Apr-14			Apr-14
1197	Shoppers Pharmacy #2371/956	Pharmacy		Apr-14			Apr-14
1198	Shoppers Pharmacy #2377/969	Pharmacy		Apr-14			Apr-14
1199	Shoppers Pharmacy #2379/972	Pharmacy		Jun-14			Jun-14
1200	Shoprite Pharmacy #536	Pharmacy		Feb-14			Feb-14
1201	Shoprite Pharmacy #545	Pharmacy		Sep-13			Nov-13
1202	Shoprite Pharmacy #547	Pharmacy		Mar-14			Mar-14
1203	Shoprite Pharmacy #548	Pharmacy		Mar-14			Mar-14
1204	Shoprite Pharmacy #549	Pharmacy		Apr-14			Apr-14
1205	Shoprite Pharmacy #551	Pharmacy		Mar-14			Mar-14
1206	Shoprite Pharmacy #555	Pharmacy		Apr-14			Apr-14
1207	Shoprite Pharmacy #563	Pharmacy		Apr-14			Apr-14
1208	Shoprite Pharmacy #567	Pharmacy		Apr-14			Apr-14
1209	Shore Family Medicine of Denton	Ambulatory		May-14			May-14
1210	Sinai Hospital of Baltimore	Hospital	LifeBridge Health	Aug-12	Sep-12	Jun-14	Nov-13
1211	Smaldore Family Practice	Ambulatory	Apr-13	Aug-13	Aug-13		Nov-13
1212	Smart Pain Management	Ambulatory	Feb-14	Apr-14	Apr-14		Apr-14
1213	Snow Hill Family Medicine	Ambulatory		Feb-14			Feb-14
1214	Snow Hill Pharmacy Inc	Pharmacy		Mar-14			Mar-14
1215	Sood Family Medicine	Ambulatory	Mar-12	Sep-13	Sep-13		Nov-13
1216	South Baltimore County Medical Center	Ambulatory	Kaiser Permanente	Mar-14			Mar-14
1217	South Baltimore Pharmacy	Pharmacy		Mar-14			Mar-14
1218	South Cumberland Pharmacy	Pharmacy		Mar-14			Mar-14
1219	South River Family Medicine	Ambulatory	Anne Arundel HealthCare Enterprises, Inc.	Jun-13	Jul-13		Apr-14
1220	South River Internal Medicine	Ambulatory		Jan-14			Jan-14
1221	Southern Maryland Women's Healthcare	Ambulatory	Feb-14	May-14	Jun-14		May-14
1222	Spectrum Behavioral Health	Ambulatory		May-14			May-14
1223	Spine Team Maryland (Affiliated with Doctors Community Hospital)	Ambulatory		Feb-14			Feb-14
1224	Spine, Sports Medicine and Pain Management, LLC	Ambulatory		Mar-14			Mar-14

## CRISP Portal, ENS & PDMP Adoption by Facility

Count	Organization	Type	Portal Participation Agreement	Training*	Portal Live*	ENS Live*	PDMP Access
1225	Sports and Spine Pain Management	Ambulatory		Feb-14			Feb-14
1226	Springfield Hospital Center	Ambulatory		Feb-14			Feb-14
1227	Sridhar Chatrathi, MD PC	Ambulatory	Mar-14	Apr-14	Apr-14		Apr-14
1228	St. Agnes Hospital	Hospital	Oct-11	Dec-12	Dec-12		Nov-13
1229	St. John's Pharmacy	Pharmacy		Jan-14			Jan-14
1230	Stem-Ross Weight Loss Center	Ambulatory		Jan-14			Jan-14
1231	Stephanie Durruthy,MD.PA	Ambulatory		Apr-14			Apr-14
1232	Steven Lacher MD PA	Ambulatory	Aug-13	Aug-13	Sep-13		Nov-13
1233	Steven Lenowitz, MD, LLC	Ambulatory		Apr-14			Apr-14
1234	Steven Salzberg MD	Ambulatory		Apr-14			Apr-14
1235	Steven Tee MD	Ambulatory		Jun-14			Jun-14
1236	Steve's Pharmacy	Pharmacy		Jan-14			Jan-14
1237	Stone Run Family Medicine	Ambulatory	Jun-12	Jun-12	Jun-12	Oct-12	Nov-13
1238	Suburban Hospital	Hospital	Sep-11	Nov-11	Sep-11		Nov-13
1239	Suburban Psychiatric Associates	Ambulatory		Jan-14			Jan-14
1240	Summit Orthopedics	Ambulatory		Apr-14			Apr-14
1241	Sun Pharmacy	Pharmacy		Mar-14			Mar-14
1242	Susquehanna Obstetrics Gynecology & Nurse Midwifery	Ambulatory	Aug-12				
1243	T and T Healthcare	Ambulatory		Jun-14			Jun-14
1244	T.A. Culbertson, M.D. Plastic Surgery	Ambulatory	Jun-14				
1245	Tansinda Medical Associates	Ambulatory	Oct-12				
1246	Target Store #T-1000	Pharmacy		Apr-14			Apr-14
1247	Target Store #T-1001	Pharmacy		May-14			May-14
1248	Target Store #T-1002	Pharmacy		Mar-14			Mar-14
1249	Target Store #T-1006	Pharmacy		Mar-14			Mar-14
1250	Target Store #T-1042	Pharmacy		Apr-14			Apr-14
1251	Target Store #T-1043	Pharmacy		May-14			May-14
1252	Target Store #T-1142	Pharmacy		Apr-14			Apr-14
1253	Target Store #T-1193	Pharmacy		Apr-14			Apr-14
1254	Target Store #T-1233	Pharmacy		Jun-14			Jun-14
1255	Target Store #T-1257	Pharmacy		Mar-14			Mar-14
1256	Target Store #T-1258	Pharmacy		Apr-14			Apr-14
1257	Target Store #T-1265	Pharmacy		May-14			May-14
1258	Target Store #T-1854	Pharmacy		May-14			May-14
1259	Target Store #T-1871	Pharmacy		Apr-14			Apr-14
1260	Target Store #T-1938	Pharmacy		Apr-14			Apr-14
1261	Target Store #T-1970	Pharmacy		Apr-14			Apr-14
1262	Target Store #T-2393	Pharmacy		Apr-14			Apr-14
1263	Target Store #T-2845	Pharmacy		Apr-14			Apr-14
1264	THC - Bon Secours	Ambulatory	Total Healthcare				
1265	THC - Division Street	FQHC	Total Healthcare	Jun-13	Jun-13		Nov-13
1266	THC - Kirk Avenue	FQHC	Total Healthcare	Jul-13	Jul-13		Nov-13
1267	THC - Linden Pediatrics	Ambulatory	Total Healthcare	Jul-13	Oct-13		Nov-13
1268	THC - Men's Health	Ambulatory	Total Healthcare	Nov-13	Nov-13		Nov-13
1269	THC - Mondawmin	FQHC	Total Healthcare	May-13	Jul-13		Nov-13
1270	THC - Saratoga	Ambulatory	Total Healthcare	Nov-13	Nov-13		Nov-13
1271	THC - True Health	Ambulatory	Total Healthcare	Jul-13	Oct-13		Nov-13
1272	THC - Westside	Ambulatory	Total Healthcare	Jul-13	Nov-13		Nov-13
1273	The Asbury Group	Long Term Care	Dec-13	Mar-14	Mar-14		Mar-14
1274	The Carle Center for Pain Management, LLC	Ambulatory		Mar-14			Mar-14
1275	The Carol M Porto Treatment Center	Ambulatory		Jan-14			Jan-14
1276	The Casey Health Institute	Ambulatory	Nov-13	Jan-14	Jan-14		Jan-14
1277	The Center for Breast Health	Ambulatory	Sep-13	Aug-13	Oct-13		Nov-13
1278	The Coordinating Center	Ambulatory	Jul-13			Nov-13	
1279	The Kahan Center For Pain Management	Ambulatory	Sep-13	Jan-14	Jan-14		Jan-14
1280	The Lifebridge Pharmacy at Northwest Hospital	Pharmacy		Jan-14			Jan-14
1281	The Lifebridge Pharmacy at Sinai Hospital	Pharmacy		Jan-14			Jan-14
1282	The Lions Center for Rehabilitation and Extended Care	Long Term Care	May-13	Jun-13	Jul-13	Jun-13	
1283	The Pain Management Group	Ambulatory		Apr-14			Apr-14
1284	The Pain Treatment Center of Greater Washington	Ambulatory		Apr-14			Apr-14
1285	The Pediatric Group	Ambulatory	Mar-12	Jul-12	Jul-12	Apr-13	
1286	The Primary Care Group of Maryland	Ambulatory	Apr-13	Apr-13	Apr-13		Nov-13
1287	The Sandra and Malcolm Berman Brain & Spine Institit	Ambulatory		Mar-14			Mar-14
1288	The THRIVE Center for ADHD	Ambulatory		Jun-14			Jun-14

## CRISP Portal, ENS & PDMP Adoption by Facility

Count	Organization	Type	Portal Participation Agreement	Training*	Portal Live*	ENS Live*	PDMP Access
1289	Therapeutic Living For Families	Ambulatory	Aug-13	Aug-13	Oct-13	Jan-14	
1290	Thomas E Maslen, MD, LLC	Ambulatory	Feb-13	May-13	May-13		Nov-13
1291	Three Lower Counties Community Services	FQHC	Jan-14				
1292	Thrive Behavioral Health	Ambulatory	Apr-14				
1293	Thrive Center	Ambulatory		May-14			May-14
1294	Tidewater Pharmacy Inc	Pharmacy		Jan-14			Jan-14
1295	TLCCS - Healthway Drive	Ambulatory	Three Lower Counties Community Services				
1296	TLCCS - Phillip Morris	Ambulatory	Three Lower Counties Community Services				
1297	TLCCS - Pocomoke	Ambulatory	Three Lower Counties Community Services	May-14	May-14		May-14
1298	TLCCS - Princess Anne	Ambulatory	Three Lower Counties Community Services				
1299	TLCCS - Riverside	Ambulatory	Three Lower Counties Community Services	Apr-14	Apr-14		Apr-14
1300	TLCCS - Sweetbay Pediatrics	Ambulatory	Three Lower Counties Community Services				
1301	TLCCS - Woodbrooke	Ambulatory	Three Lower Counties Community Services	Apr-14	Apr-14		Apr-14
1302	Total Family Care	Ambulatory	Aug-13				
1303	Total Healthcare	FQHC	May-13	Jul-13	Jul-13	Nov-13	Nov-13
1304	Towson Neurology Associates, PA	Ambulatory		Mar-14			Mar-14
1305	Towson Pharmacy	Pharmacy		Apr-14			Apr-14
1306	True Care Health, LLC	Ambulatory		Jun-14			Jun-14
1307	True Care Medical	Ambulatory		Mar-14			Mar-14
1308	Turning Point Clinic	Ambulatory		May-14			May-14
1309	Ulmer Family Medicine	Ambulatory	Feb-12	May-12	May-12	Oct-12	Nov-13
1310	UMMC - Health Home	Ambulatory	Aug-11			Jun-14	
1311	UMMC - PATH Health Home	Ambulatory	Aug-11			Jun-14	
1312	UMMS Pharmacy - Redwood	Pharmacy		Apr-14			Apr-14
1313	Union Bridge Family Practice	Ambulatory		Jan-14			Jan-14
1314	Union Hospital of Cecil County	Hospital	Feb-11	Sep-12	Sep-12		Nov-13
1315	Union Medical Clinic	Ambulatory		Jun-14			Jun-14
1316	Union Neurology Services	Ambulatory	Feb-11	Feb-14	Feb-14		Feb-14
1317	Union Primary Care Elkton	Ambulatory	Feb-11	Apr-13	Apr-13		Nov-13
1318	United Health Care	Payor	Sep-13			Nov-13	
1319	Universal American Corp.	Ambulatory	Apr-14			Jun-14	
1320	University Care Heritage Crossing	Ambulatory	University of Maryland Medical Center	May-12	May-13	Aug-13	Jan-14
1321	University Care of Edmondson Village	Ambulatory	University of Maryland Medical Center	Jun-13	May-13	Aug-13	Nov-13
1322	University Care of Shipley's Choice	Ambulatory	University of Maryland Medical Center	May-12	May-13	Aug-13	
1323	University Family Medicine Faculty Physicians	Ambulatory	University of Maryland Medical Center	Apr-13	Apr-13	Mar-13	Nov-13
1324	University of Maryland Cardiology Physicians	Ambulatory	University of Maryland Medical Center	Mar-13	Apr-13		
1325	University of Maryland Charles Regional Medical Center (Civista Medical Center)	Hospital	University of Maryland Medical System	Jan-13	Jan-13		Nov-13

## CRISP Portal, ENS & PDMP Adoption by Facility

Count	Organization	Type	Portal Participation Agreement	Training*	Portal Live*	ENS Live*	PDMP Access
1326	University of Maryland Medical Center	Hospital	University of Maryland Medical System	Jul-12	Jul-12		Nov-13
1327	University of Maryland Medical Center Midtown Campus	Hospital	University of Maryland Medical System	Feb-13	Feb-13	Jun-14	Nov-13
1328	University of Maryland Medical System	Health System	Aug-11	Dec-13	Dec-13		Dec-13
1329	University of Maryland Pain Center	Ambulatory	University of Maryland Medical System	Jan-14			Jan-14
1330	University of Maryland Rehabilitation and Orthopaedic Institute (formerly, James Lawrence Kernan Hospital)	Hospital	University of Maryland Medical System	Feb-14	Feb-14		Feb-14
1331	University of Maryland Shore Health System	Health System	Aug-11				
1332	University of Maryland Shore Medical Center at Chestertown	Hospital	University of Maryland Medical System	Mar-13	Mar-13		Nov-13
1333	University of Maryland Shore Medical Center at Dorchester	Hospital	University of Maryland Medical System	Jan-14	Jan-14		Jan-14
1334	University of Maryland Shore Medical Center at Easton	Hospital	University of Maryland Medical System	Mar-13	Oct-13		Apr-14
1335	University of Maryland St. Joseph Medical Center	Hospital	Oct-11	Mar-12	May-12	Aug-12	Dec-13
1336	University of Maryland Upper Chesapeake Medical Center	Hospital	Nov-11	Aug-12	Aug-12		Nov-13
1337	University of Maryland Upper Chesapeake Medical System	Health System	Aug-11				
1338	Upper Bay Counseling and Support Services	Ambulatory	Aug-13	Oct-13	Sep-13	Dec-13	
1339	VA Maryland Health Care System	Government Agency		Apr-14			Apr-14
1340	VAMHCS	Hospital		Jun-14			Jun-14
1341	Vel Natesan MD PA	Ambulatory	Apr-14	May-14			May-14
1342	Vesta, Inc.	Ambulatory	Nov-13	Mar-14	Mar-14	Jun-14	Mar-14
1343	Villa Maria of Washington County	Ambulatory		Apr-14			Apr-14
1344	Village at Rockville	Long Term Care	Jun-11	Nov-11	Nov-11		
1345	Village Green Apothecary	Pharmacy		Apr-14			Apr-14
1346	Virgo-Carter Pediatrics	Ambulatory	Jun-12				
1347	Vishal Datta, M.D., P.A.	Ambulatory	May-13	May-13	Sep-13		
1348	Waldorf Primary Care	Ambulatory		Jun-14			Jun-14
1349	Walgreens #02446	Pharmacy		Mar-14			Mar-14
1350	Walgreens #05408	Pharmacy		Feb-14			Feb-14
1351	Walgreens #05409	Pharmacy		Mar-14			Mar-14
1352	Walgreens #05410	Pharmacy		Apr-14			Apr-14
1353	Walgreens #05587	Pharmacy		Mar-14			Mar-14
1354	Walgreens #05623	Pharmacy		Apr-14			Apr-14
1355	Walgreens #05638	Pharmacy		Jun-14			Jun-14
1356	Walgreens #05686	Pharmacy		Feb-14			Feb-14
1357	Walgreens #06265	Pharmacy		Mar-14			Mar-14
1358	Walgreens #06320	Pharmacy		Mar-14			Mar-14
1359	Walgreens #06779	Pharmacy		Apr-14			Apr-14
1360	Walgreens #07357	Pharmacy		Feb-14			Feb-14
1361	Walgreens #07554	Pharmacy		Mar-14			Mar-14
1362	Walgreens #07573	Pharmacy		Feb-14			Feb-14
1363	Walgreens #07574	Pharmacy		Apr-14			Apr-14
1364	Walgreens #07701	Pharmacy		Apr-14			Apr-14
1365	Walgreens #09028	Pharmacy		Mar-14			Mar-14
1366	Walgreens #09342	Pharmacy		Mar-14			Mar-14
1367	Walgreens #09490	Pharmacy		Jun-14			Jun-14
1368	Walgreens #09632	Pharmacy		Feb-14			Feb-14
1369	Walgreens #09926	Pharmacy		Mar-14			Mar-14
1370	Walgreens #09927	Pharmacy		Mar-14			Mar-14
1371	Walgreens #09967	Pharmacy		Feb-14			Feb-14
1372	Walgreens #10063	Pharmacy		Mar-14			Mar-14
1373	Walgreens #10076	Pharmacy		Mar-14			Mar-14
1374	Walgreens #10402	Pharmacy		Mar-14			Mar-14
1375	Walgreens #10539	Pharmacy		Feb-14			Feb-14
1376	Walgreens #10976	Pharmacy		Feb-14			Feb-14

## CRISP Portal, ENS & PDMP Adoption by Facility

Count	Organization	Type	Portal Participation Agreement	Training*	Portal Live*	ENS Live*	PDMP Access
1377	Walgreens #10977	Pharmacy		Feb-14			Feb-14
1378	Walgreens #11054	Pharmacy		Feb-14			Feb-14
1379	Walgreens #11123	Pharmacy		May-14			May-14
1380	Walgreens #11140	Pharmacy		Mar-14			Mar-14
1381	Walgreens #11169	Pharmacy		Mar-14			Mar-14
1382	Walgreens #11283	Pharmacy		Feb-14			Feb-14
1383	Walgreens #11501	Pharmacy		Mar-14			Mar-14
1384	Walgreens #11594	Pharmacy		Mar-14			Mar-14
1385	Walgreens #11949	Pharmacy		Feb-14			Feb-14
1386	Walgreens #11999	Pharmacy		Feb-14			Feb-14
1387	Walgreens #12130	Pharmacy		Mar-14			Mar-14
1388	Walgreens #12266	Pharmacy		Feb-14			Feb-14
1389	Walgreens #12324	Pharmacy		Feb-14			Feb-14
1390	Walgreens #12433	Pharmacy		Mar-14			Mar-14
1391	Walgreens #12472	Pharmacy		Mar-14			Mar-14
1392	Walgreens #12560	Pharmacy		Mar-14			Mar-14
1393	Walgreens #12748	Pharmacy		Mar-14			Mar-14
1394	Walgreens #12790	Pharmacy		Mar-14			Mar-14
1395	Walgreens #12846	Pharmacy		Feb-14			Feb-14
1396	Walgreens #13149	Pharmacy		Mar-14			Mar-14
1397	Walgreens #13457	Pharmacy		Mar-14			Mar-14
1398	Walgreens #13606	Pharmacy		Mar-14			Mar-14
1399	Walgreens #13816	Pharmacy		Apr-14			Apr-14
1400	Walgreens #13840	Pharmacy		Mar-14			Mar-14
1401	Walgreens #13892	Pharmacy		Feb-14			Feb-14
1402	Walgreens #13893	Pharmacy		Feb-14			Feb-14
1403	Walgreens #15117	Pharmacy		Feb-14			Mar-14
1404	Walgreens #15130	Pharmacy		Apr-14			Apr-14
1405	Walgreens #15185	Pharmacy		Feb-14			Feb-14
1406	Walgreens #15284	Pharmacy		Mar-14			Mar-14
1407	Walgreens #15958	Pharmacy		Mar-14			Mar-14
1408	Walgreens #15978	Pharmacy		Mar-14			Mar-14
1409	Walgreens #15979	Pharmacy		Mar-14			Mar-14
1410	Walgreens #15980	Pharmacy		Mar-14			Mar-14
1411	Walgreens #16186 - GBMC East	Pharmacy		Apr-14			Apr-14
1412	Walgreens #16191 - Sinai Hospital	Pharmacy		May-14			May-14
1413	Walgreens #16199 - St. Agnes Hospital	Pharmacy		May-14			May-14
1414	Walgreens #5331	Pharmacy		Mar-14			Mar-14
1415	Walgreens #6396	Pharmacy		Mar-14			Mar-14
1416	Walgreens #7678	Pharmacy		Mar-14			Mar-14
1417	Walgreens #9028	Pharmacy		Feb-14			Feb-14
1418	Walgreens #9032	Pharmacy		Feb-14			Feb-14
1419	Walgreens Pharmacy	Pharmacy		Feb-14			Feb-14
1420	Walgreens#16197	Pharmacy		May-14			May-14
1421	Walnut Street Community Health Center	FQHC	Feb-14	Mar-14	Mar-14		Mar-14
1422	Washington Adventist Hospital	Hospital	Adventist Healthcare	Apr-11	Apr-11		Nov-13
1423	Washington Center for Women's and Children's Wellness	Ambulatory		Apr-14			Apr-14
1424	Washington County Health Dept	Government Agency		Jan-14			Jan-14
1425	Washington Nephrology Associates	Ambulatory		Jun-14			Jun-14
1426	Washington Open MRI	Radiology	Nov-12				
1427	Waugh Chapel Family Medicine	Ambulatory	Anne Arundel HealthCare Enterprises, Inc.	Jul-13	Sep-13		
1428	Way Station, Inc.	Ambulatory	Mar-13	Jan-14	Jan-14	Apr-13	Jan-14
1429	Wayne Meyer, MD	Ambulatory	Feb-14	Mar-14	Mar-14		Mar-14
1430	We Care Health Services	Ambulatory		May-14			May-14
1431	Wegmans Food Markets - Mcgraw Road	Pharmacy		Jun-14			Jun-14
1432	Wegmans Food Markets #40	Pharmacy		Feb-14			Feb-14
1433	Wegmans Food Markets #53	Pharmacy		Mar-14			Mar-14
1434	Wegmans Food Markets #54	Pharmacy		Mar-14			Mar-14
1435	Wegmans Food Markets #56	Pharmacy		Mar-14			Mar-14
1436	Wegmans Food Markets #60	Pharmacy		Feb-14			Feb-14
1437	Wegmans Pharmacy #14 : Hunt Valley	Pharmacy		Jun-14			Jun-14
1438	Weis Pharmacy #167	Pharmacy		Jun-14			Jun-14
1439	Wellspring Medical Group/Thurmont Family Medicine	Ambulatory		Jun-14			Jun-14

## CRISP Portal, ENS & PDMP Adoption by Facility

Count	Organization	Type	Portal Participation Agreement	Training*	Portal Live*	ENS Live*	PDMP Access
1440	Wellspring Family Medicine PC	Ambulatory	Jun-12	Dec-12	Nov-12		
1441	Western Maryland Health System	Hospital	Jan-11	Jan-11	Jan-11		Apr-14
1442	Western Maryland Health System Pharmacy	Pharmacy		Feb-14			Feb-14
1443	Western Maryland Recovery Services	Ambulatory	Oct-13	Oct-13	Oct-13		
1444	Westview Urgent Care	Ambulatory		Apr-14			Apr-14
1445	Wexford Health Sources	Government Agency	Dec-12	Apr-13	Dec-12		Nov-13
1446	White Marsh Pharmacy	Pharmacy		Jun-14			Jun-14
1447	White Marsh Psychiatric Associates, LLC	Ambulatory	Apr-14	May-14	May-14		May-14
1448	White Plains Medical Center	Ambulatory	May-14	Jan-14			Jan-14
1449	Whitesell's Pharmacy	Pharmacy		Feb-14			Feb-14
1450	Wicomico County Health Department	Government Agency	Jan-13	Apr-13	Apr-13		Nov-13
1451	William Russell, M.D.	Ambulatory		Apr-14			Apr-14
1452	Williamsport Pharmacy	Pharmacy		Mar-14			Mar-14
1453	Willie M. Yu MD PC	Ambulatory	Dec-13	Feb-14			Feb-14
1454	Women's Health Specialists	Ambulatory	Jul-12	Jul-12	Jul-12		Feb-14
1455	Worcester County Health Department	Government Agency	Jan-13	Jul-13	Jul-13		Nov-13
1456	XpressMedCare, LLC	Ambulatory	Jun-14	Jun-14			Jun-14
1457	Your docs in - Easton	Ambulatory	Your Docs In - Salisbury	Mar-14	Mar-14		
1458	Your Docs In - Ocean City	Ambulatory	Your Docs In - Salisbury				
1459	Your Docs In - Pocomoke	Ambulatory	Your Docs In - Salisbury	Mar-14	Mar-14		
1460	Your Docs In - Salisbury	Ambulatory	Dec-13	Feb-14	Mar-14		Mar-14
1461	Zenith Medical Care, LLC	Ambulatory	Jul-13				
<b>Total</b>			<b>418</b>	<b>1317</b>	<b>373</b>	<b>108</b>	<b>1206</b>

### Key Terms and Notes:

**CRISP Portal:** The CRISP Portal is a standalone system available via the Internet that provides patient health information from Maryland hospitals and other providers who are connected to the HIE. Currently, select information is available via the portal, including patient demographics, laboratory results, radiology reports, discharge summaries, operative and consult notes, and medication fill history

**Encounter Notification System (ENS):** A system that notifies providers when one of their patients has an encounter at a Maryland hospital, which includes patient admission, discharge, and transfer activity

**ENS Live:** The number of organizations receiving ENS alerts

**Green Shading Indicates Completed:** Practices that have completed the category are shaded green with the month indication of completion

**Participation Agreement:** Providers sign a participation agreement with CRISP in order to query the CRISP Portal. Multiple facilities or organizations can be covered under a single Participation Agreement (e.g. MedStar); entries containing an organization name in the Portal Participation Agreement field indicate the name of the organization that holds the Participation Agreement. Pharmacies are exempt from signing a Participation Agreement.

**Patient Education:** Education materials are provided to practices to hand out to patients regarding the CRISP Portal before a practice may begin using the Portal

**PDMP (Prescription Drug Monitoring Program) Access:** Number of organizations using PDMP services; records of prescribing and dispensing of controlled dangerous substances available in CRISP query portal that went live as a pilot in November 2013

**Portal Live:** An organization has completed the credentialing, legal, and training process and has at least one user approved to use the Portal

**Portal Training:** CRISP provides training to clinical providers in order for participants to learn how to access clinical information in real-time Training includes information about accessing the Portal and patient education. Training is the first person trained at the facility

\* Although most providers/practices follow a sequence (provider agreement, training, usage), some practices completed the steps in a different order; metrics in chart represent a snapshot of CRISP data available at the end of each month, certain dates may fluctuate from month to month

## CRISP Other Projects

#	Project Name	Project Description
1	Regional Extension Center Operations	Provides support to 1,000 small practices to achieve meaningful use by providing direct technical assistance through Management Service Organizations
2	Direct Secure Messaging	Provides the ability for an individual clinician or organization to send or receive Secure Email, to support a variety of clinical purposes
3	State Innovation Model (SIM) Reporting and Mapping	Partnering with the Department of Health and Mental Hygiene (DHMH) on the development of hospital encounter reporting and mapping capabilities to support the community integrated medical home model
4	Health Enterprise Zone (HEZ) Dash-boarding and Mapping	Leveraging the capabilities developed under the SIM grant, to offer dash-boarding and technical assistance for the HEZ program
5	Prescription Drug Monitoring Program (PDMP)	The PDMP makes records of the prescribing and dispensing of controlled dangerous substances available in the CRISP Query Portal, in an effort to stem the rise of prescription drug abuse and diversion. The PDMP project went live in mid-December.
6	Health Benefit Exchange (HBE) - Provider Information Management	CRISP is obtaining provider information from the Qualified Health Plans participating in Maryland's HBE and partnering with Optum to produce a verified provider demographics source so that consumers of the HBE can search for health insurance plans by provider name
7	HBE - All Payer Claims Database Unique Identifier	Relying on the Initiate Master Patient Index, CRISP is attaching a unique patient identifier to carrier eligibility files sent to MHCC to enable insights into member churn between commercial Qualified Health Plans and Medicaid
8	HBE - Care Summary	In its early stage, this project would allow a new enrollee in a health plan to choose to send prior clinical records to care coordinators affiliated with their new health plan, such that proactive services may be provided in advance of a new billing history building up
9	Public Health - Electronic Lab Reporting	To support reporting for the public health meaningful use measure, CRISP is sending a copy of electronic reportable labs to the State via Health Level Seven (HL7), providing assistance with the formatting of the lab messages as necessary
10	Public Health - Immunization Reporting	Hospitals will send Immunization messages via HL7 to CRISP which will pass them along to the State to a Secure File Transfer Protocol (SFTP) location
11	Public Health - Syndromic Surveillance	CRISP will send a copy of existing discharge (A04) and update (A08) messages to DHMH via HL7 to an SFTP location, providing assistance with the formatting of the admission, discharge, and transfer (ADT) messages as necessary
12	Department of Public Safety and Correctional Services Query	Providing access to the CRISP Query Portal for Department of Corrections and users at the locked ward at Bon Secours Hospital
13	Single Sign On	Implementing additional HIE capabilities to Medicaid providers, such as single sign on to the HIE
14	DC Hospital Integration	Working with DC Department of Health Care Finance (DHCF) to support DC acute care hospital connectivity with the CRISP HIE infrastructure
15	Medicaid Outreach DHMH	Partnering with DHMH for outreach to eligible professionals and hospitals in regards to the Medicaid Meaningful Use Incentives Program in Maryland