

CRISP Monthly Reports

May 2014

The Chesapeake Regional Information System for our Patients (CRISP), the State-Designated health information exchange (HIE), submits monthly status reports to the Maryland Health Care Commission (MHCC). The monthly reports provide updates to the HIE program and use of HIE services, and the Regional Extension Center (REC) program. The MHCC's Center for Health Information Technology & Innovative Care Delivery uses the information to facilitate development of the State-Designated HIE, craft policy around privacy and security, and develop initiatives to expand health information technology adoption, including electronic health record adoption and meaningful use.

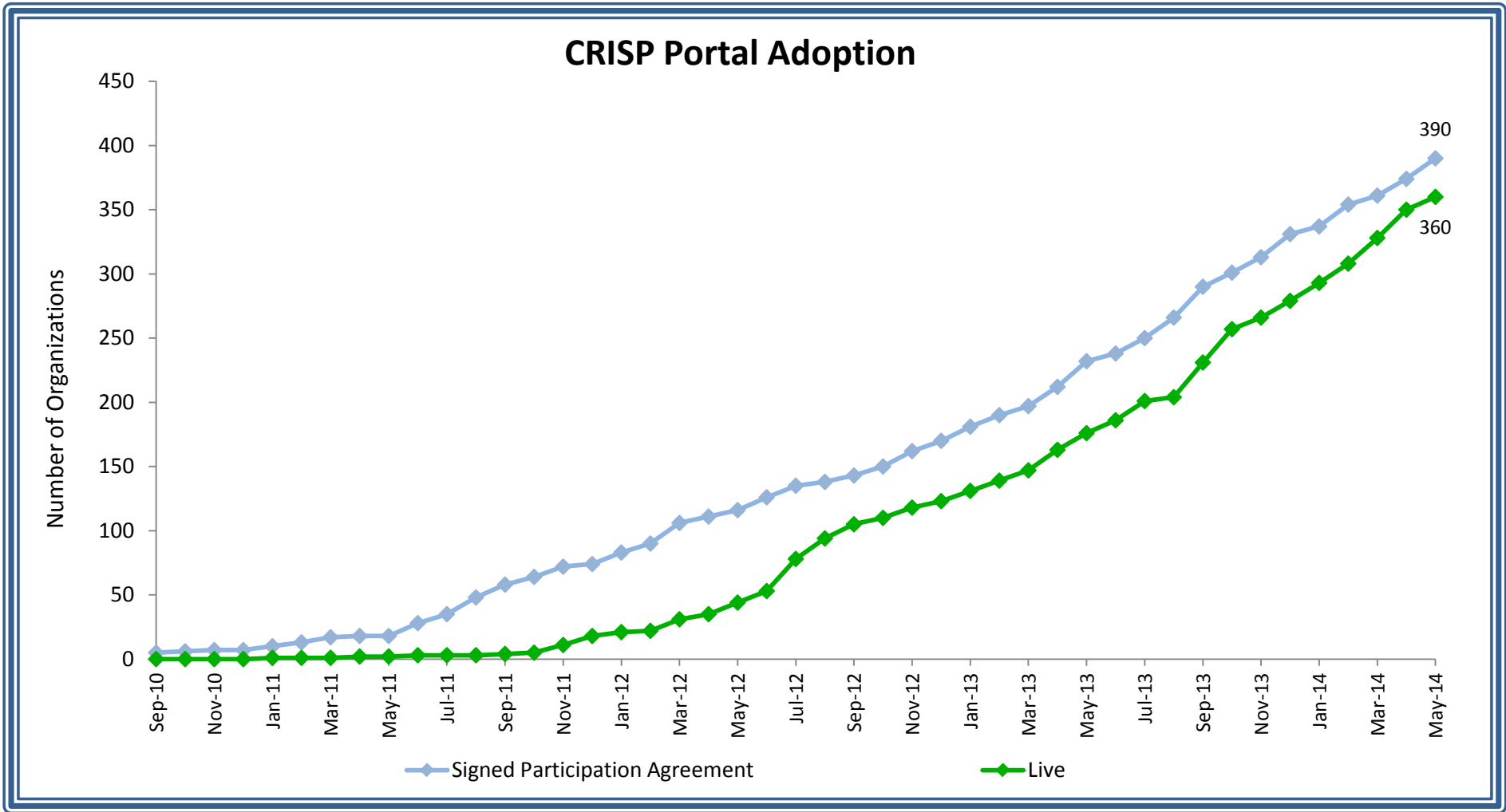
At a Glance

HIE Category	New March	New April	New May	Total* #	Total* %
Ambulatory Practice Data Consumption (# of organizations) N=6,537					
Signed participation agreements - CRISP Portal	7	12	15	265	4.1%
CRISP portal live	16	18	8	245	3.7%
Direct message accounts live	27	2	21	276	4.2%
Encounter notification service live	2	5	3	64	1.0%
Hospital Data Submission (# of hospitals) N=46					
Laboratory reports	1	1	0	33	72%
Radiology reports	0	1	0	39	85%
Transcribed reports	0	1	1	37	82% ¹
Long Term Care Data Consumption (# of organizations) N=235					
Signed participation agreements - CRISP Portal	0	0	0	35	15%
CRISP portal live	3	0	2	27	11%
Encounter notification service live	0	0	1	7	3%
Query Portal Usage					
Number of CRISP Portal queries ²	33,096	40,111	46,033		
Single-sign on live in Maryland hospitals	0	0	0	5	11%

*Totals are cumulative

Notes:

- Garrett County Memorial Hospitals has no plans to submit transcribed reports to CRISP
- Number of CRISP Portal queries not listed in Total # and Total % columns because CRISP Portal queries are not calculated based on a cumulative total over time



Key Terms:

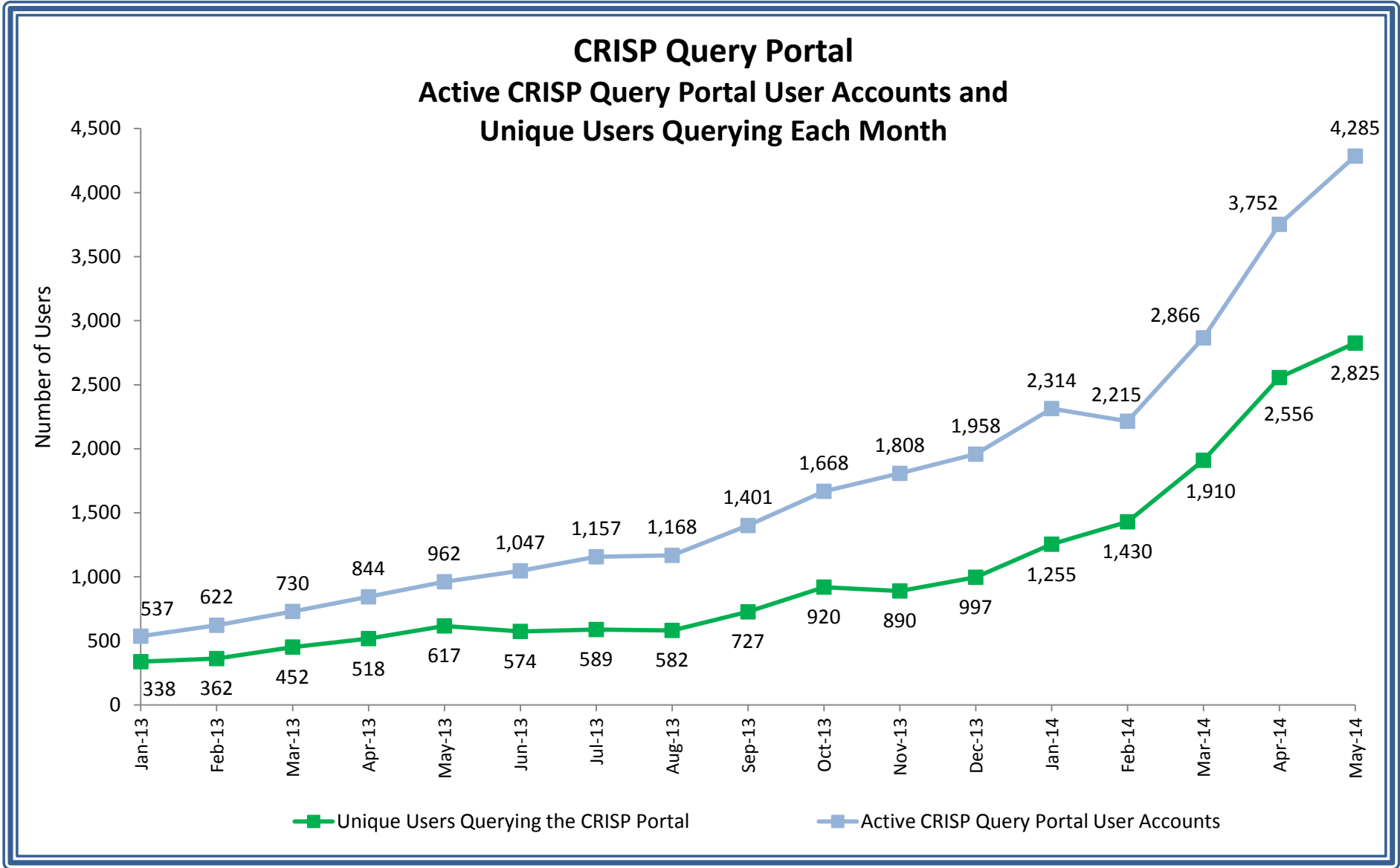
CRISP Portal: A standalone web-based system that contains patient health information from Maryland hospitals and other providers connected to the HIE. Information available via the portal includes patient demographics, laboratory results, radiology reports, discharge summaries, operative and consult notes, and medication fill history

Participation Agreement: Providers sign a participation agreement with CRISP in order to query the CRISP Portal

Live: An organization has completed the credentialing, legal, and training process and has at least one user approved to use the Portal

Notes:

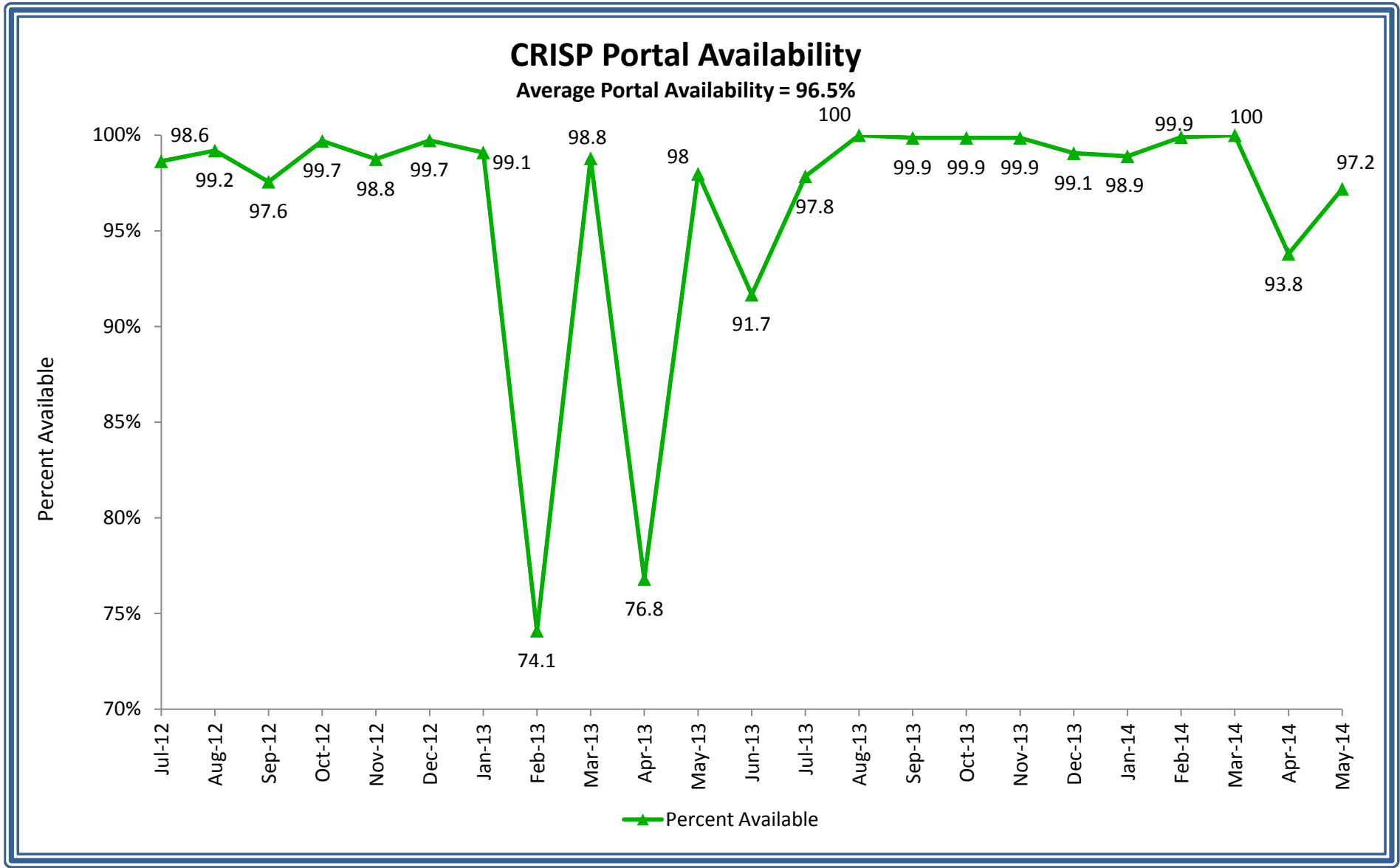
- Gap between organizations with a *Signed Participation Agreement* and those *Live* : some organizations only desire use of ENS and do not intend to use the portal



Key Terms:

CRISP Portal: A standalone web-based system that contains patient health information from Maryland hospitals and other providers connected to the HIE. Information available via the portal includes patient demographics, laboratory results, radiology reports, discharge summaries, operative and consult notes, and medication fill history

Users: Doctors, nurses, pharmacists and eligible medical staff whose identity and credentials have been authenticated and granted a CRISP login account



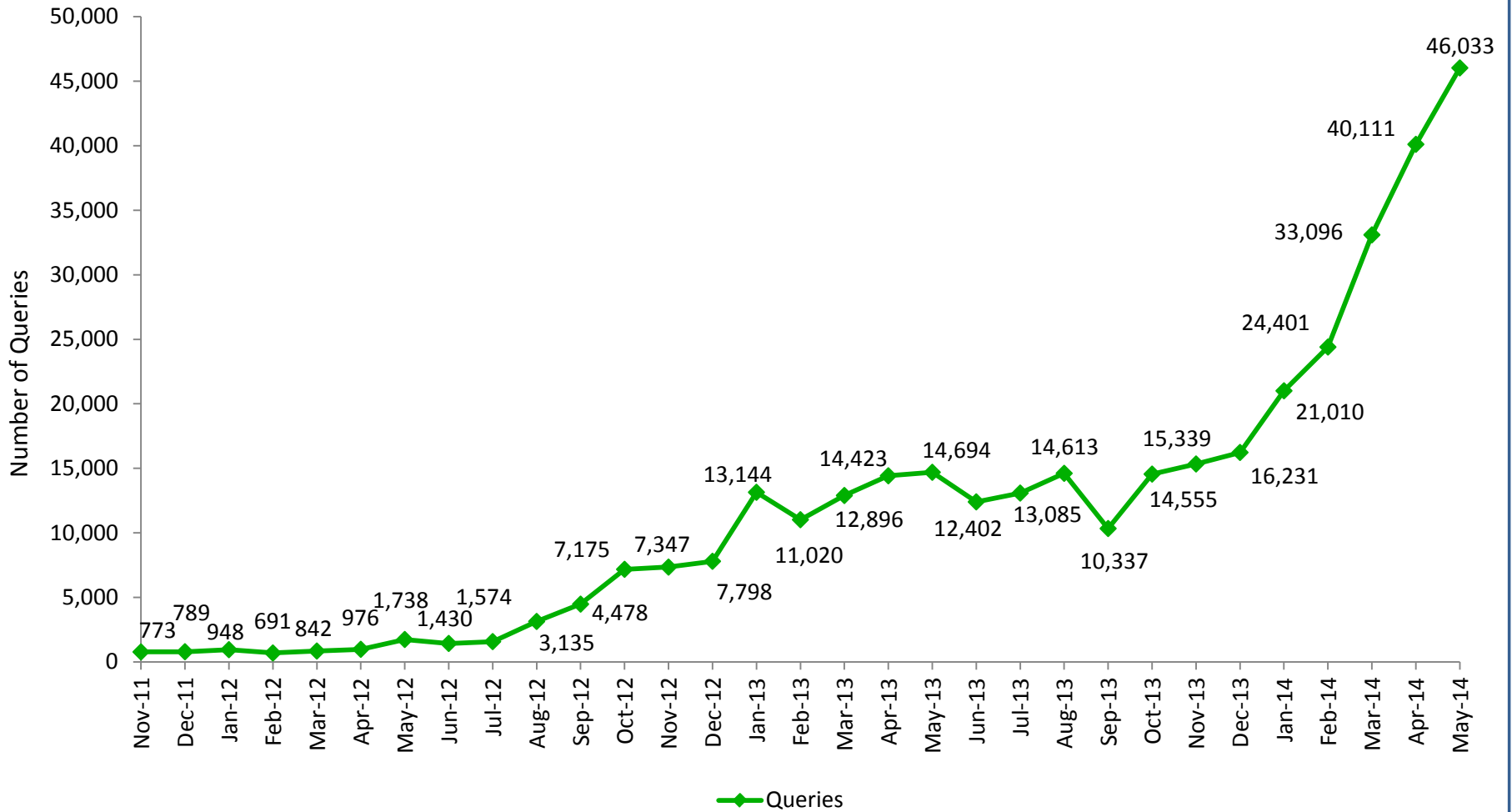
Key Terms:

CRISP Portal: A standalone web-based system that contains patient health information from Maryland hospitals and other providers connected to the HIE. Information available via the portal includes patient demographics, laboratory results, radiology reports, discharge summaries, operative and consult notes, and medication fill history

Portal Availability: The percent of hours that the portal is live out of all possible hours in a month

Percent Available: The percent of hours that the portal is available during the month

CRISP Portal Queries



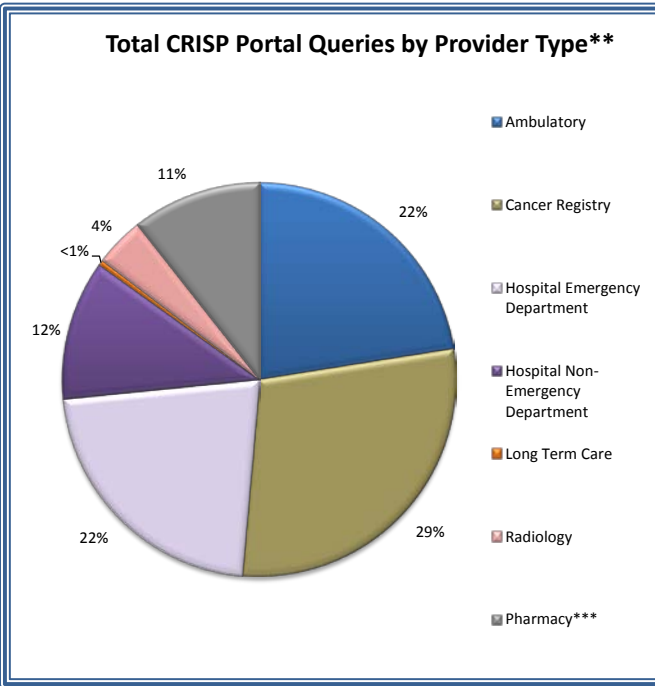
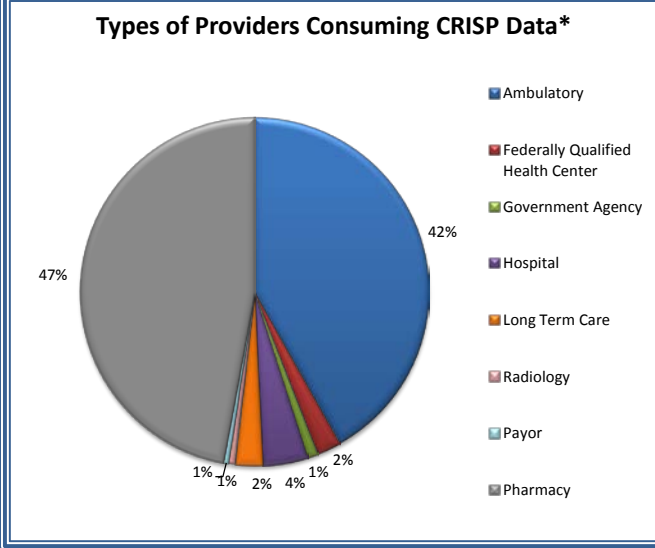
Key Terms:

CRISP Portal: The CRISP Portal is a standalone system available via the Internet that provides patient health information from Maryland hospitals and other providers who are connected to the HIE. Currently, select information is available via the portal, including patient demographics, laboratory results, radiology reports, discharge summaries, operative and consult notes, and medication fill history

Queries: Number of searches within the CRISP Portal per month

CRISP Portal Queries by Provider Type

Month	Provider Type									Total
	Ambulatory	Cancer Registry	Hospital Emergency Department	Hospital Non-Emergency Department	Long Term Care	Radiology	Pharmacy***			
Apr-12	#	315	213	285	25	79	58	-	-	976
	%	32	22	29	3	8	6	-	-	100
May-12	#	388	722	427	42	91	68	-	-	1,738
	%	22	42	25	2	5	4	-	-	100
Jun-12	#	331	475	315	38	181	88	-	-	1,430
	%	23	33	22	3	13	6	-	-	100
Jul-12	#	527	459	382	49	9	149	-	-	1,574
	%	33	29	24	3	1	9	-	-	100
Aug-12	#	1,027	715	781	96	17	499	-	-	3,135
	%	33	23	25	3	1	16	-	-	100
Sep-12	#	1,024	2,110	992	0	17	334	-	-	4,478
	%	23	47	22	0	0	7	-	-	100
Oct-12	#	1,449	3,890	1,193	176	19	448	-	-	7,175
	%	20	54	17	2	0	6	-	-	100
Nov-12	#	1,930	3,218	1,465	189	14	531	-	-	7,347
	%	26	44	20	3	0	7	-	-	100
Dec-12	#	1,955	2,948	1,516	233	53	1,093	-	-	7,798
	%	25	38	19	3	1	14	-	-	100
Jan-13	#	2,066	6,982	1,955	455	40	1,646	-	-	13,144
	%	16	53	15	3	0	13	-	-	100
Feb-13	#	1,414	6,176	1,987	596	61	786	-	-	11,020
	%	13	56	18	5	1	7	-	-	100
Mar-13	#	1,956	6,122	3,103	891	31	793	-	-	12,896
	%	15	47	24	7	0	6	-	-	100
Apr-13	#	2,137	7,017	3,370	1,056	60	783	-	-	14,423
	%	15	49	23	7	0	5	-	-	100
May-13	#	1,606	7,922	3,507	979	105	575	-	-	14,694
	%	11	54	24	7	1	4	-	-	100
Jun-13	#	1,831	5,630	3,256	1,023	65	597	-	-	12,402
	%	15	45	26	8	1	5	-	-	100
Jul-13	#	2,323	6,003	3,027	1,180	19	533	-	-	13,085
	%	18	46	23	9	0	4	-	-	100
Aug-13	#	2,065	7,623	2,858	1,376	118	573	-	-	14,613
	%	14	52	20	9	1	4	-	-	100
Sep-13	#									10,337
	%									
Oct-13	#	3,114	4,116	3,231	3,150	53	618	273		14,555
	%	21	28	22	22	0	4	2		100
Nov-13	#	2,378	5,111	3,993	2,951	8	491	407		15,339
	%	16	33	26	19	0	3	3		100
Dec-13	#	3,150	4,407	4,723	2,986	8	400	557		16,231
	%	19	27	29	18	0	2	3		100
Jan-14	#	6,773	2,766	5,995	3,510	17	636	1,313		21,010
	%	32	13	29	17	0	3	6		100
Feb-14	#	7,047	3,409	6,014	3,908	56	464	3,503		24,401
	%	29	14	25	16	0	2	14		100
Mar-14	#	8,333	5,086	6,949	4,828	81	646	7,173		33,096
	%	25	15	21	15	0	2	22		100
Apr-14	#	11,663	4,278	7,734	4,747	168	722	10,799		40,111
	%	29	11	19	12	0	2	27		100
May-14	#	12,504	4,601	8,548	6,060	199	820	13,301		46,033
	%	31	11	21	15	0	2	33		115
Total	#	79,307	102,000	77,606	40,544	1,569	14,352	37,326		363,041
Monthly Average	#	3,172	4,080	3,104	1,622	63	574	4,666		13,963



Key Terms:

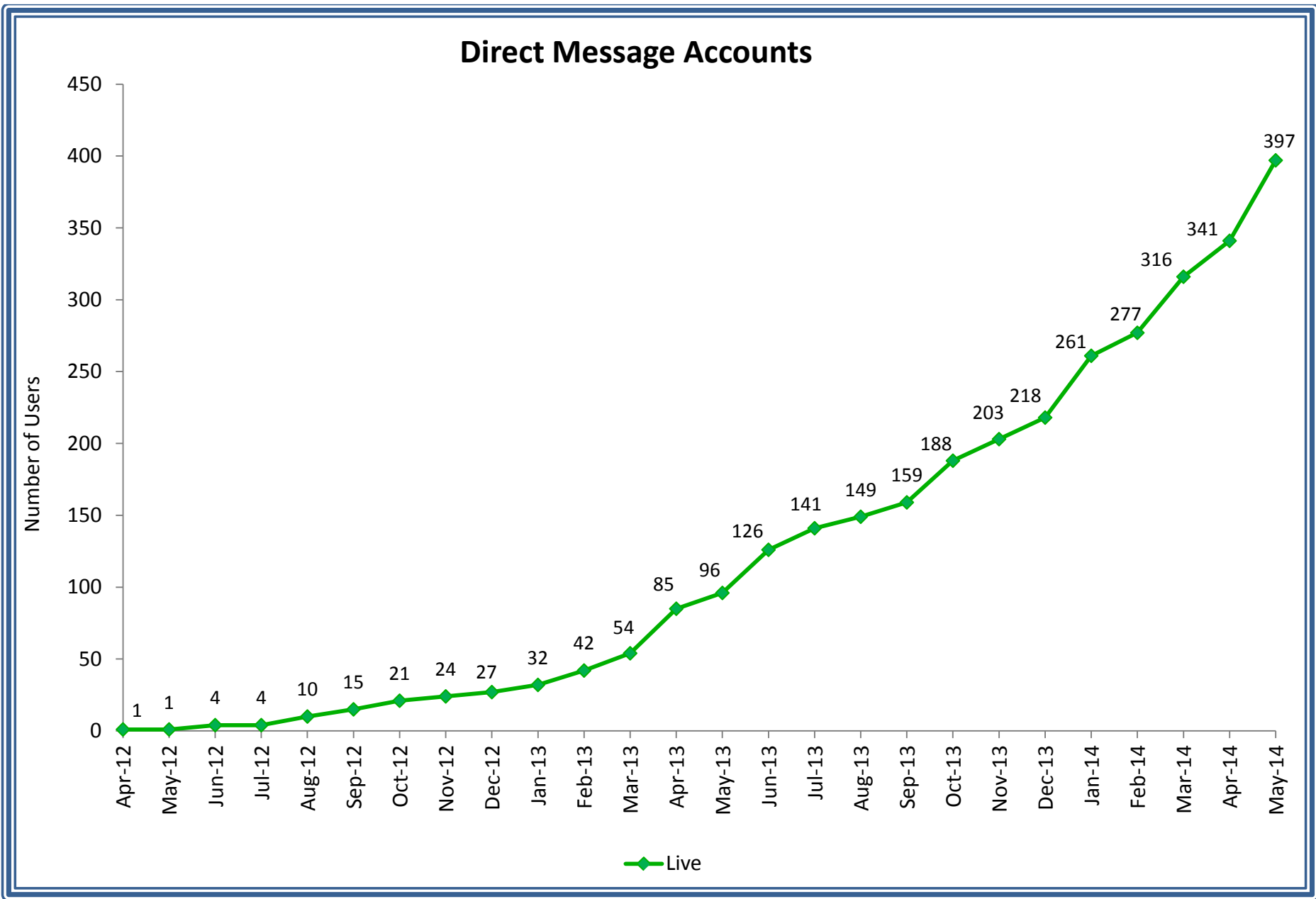
CRISP Portal: The CRISP Portal is a standalone system available via Internet that provides patient health information from Maryland hospitals and other providers connected to the health information exchange. Currently, select information is available via the portal, including patient demographics, laboratory results, radiology reports, discharge summaries, operative and consult notes, and medication fill history

Queries: Number of searches within the CRISP Portal per month

*Includes access to CRISP Portal, encounter notification service (ENS), and/or Prescription Drug Monitoring Program (PDMP); details about providers consuming CRISP data are available on the *CRISP Portal, ENS & PDMP Adoption by Facility* table; PDMP users include prescribers (health care providers with the authorization to prescribe controlled dangerous substances), pharmacists (dispensers of controlled dangerous substances), and delegates (licensed health professionals with access to PDMP under an overseeing prescriber or pharmacist)

** Includes CRISP Portal and PDMP queries

***Pharmacy data available beginning in October 2013

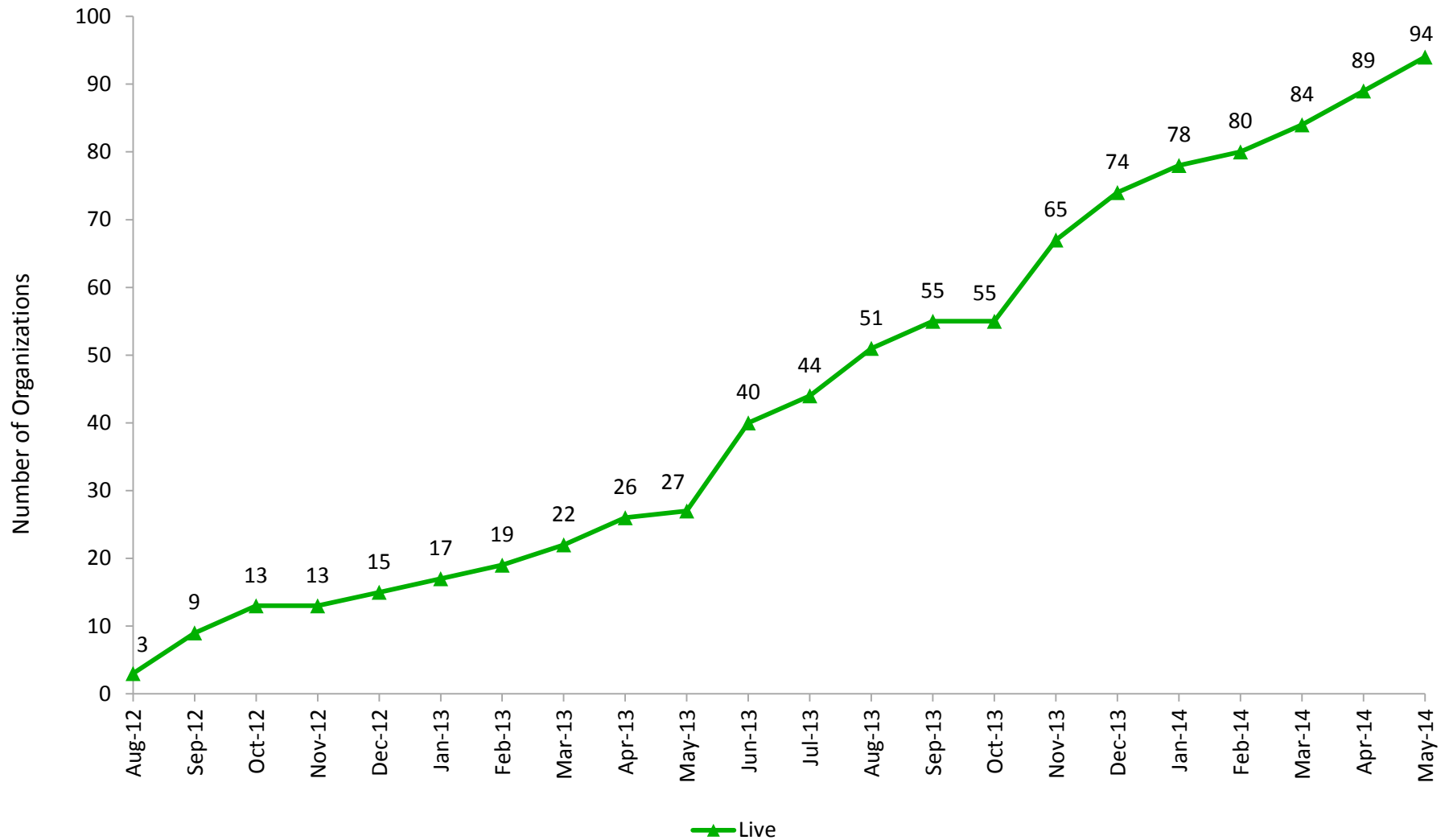


Key Terms:

Direct Message Accounts: A secure and encrypted e-mail service that supports electronic communication between health care providers

Live: Users live with a CRISP Direct Messaging account

Encounter Notification Service Adoption



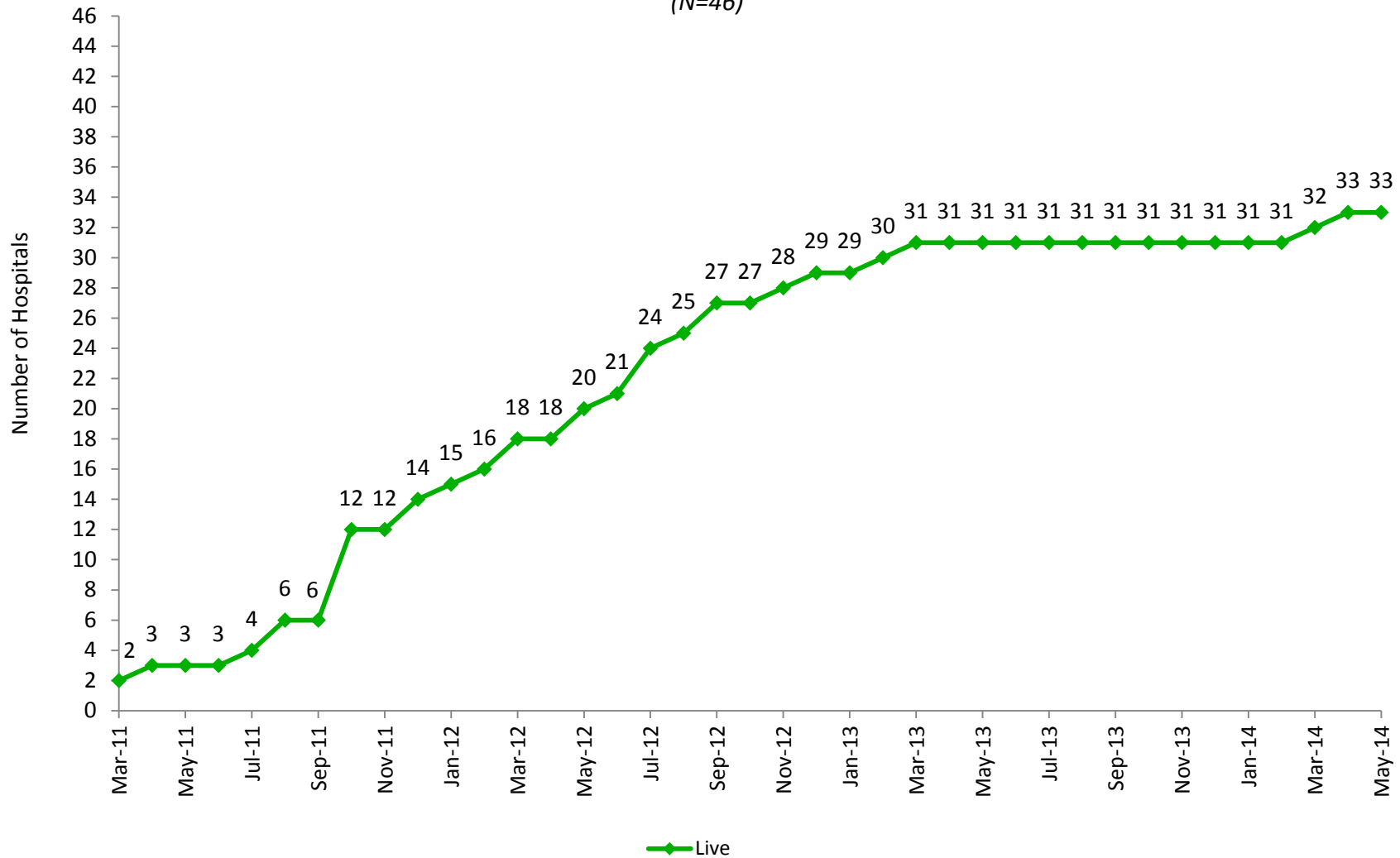
Key Terms:

Encounter Notification System (ENS): A system that notifies providers when one of their patients has an encounter at a Maryland hospital, which includes patient admission, discharge, and transfer activity

Live: The number of organizations receiving ENS alerts

Hospital Data Submission Laboratory Reports Live

(N=46)



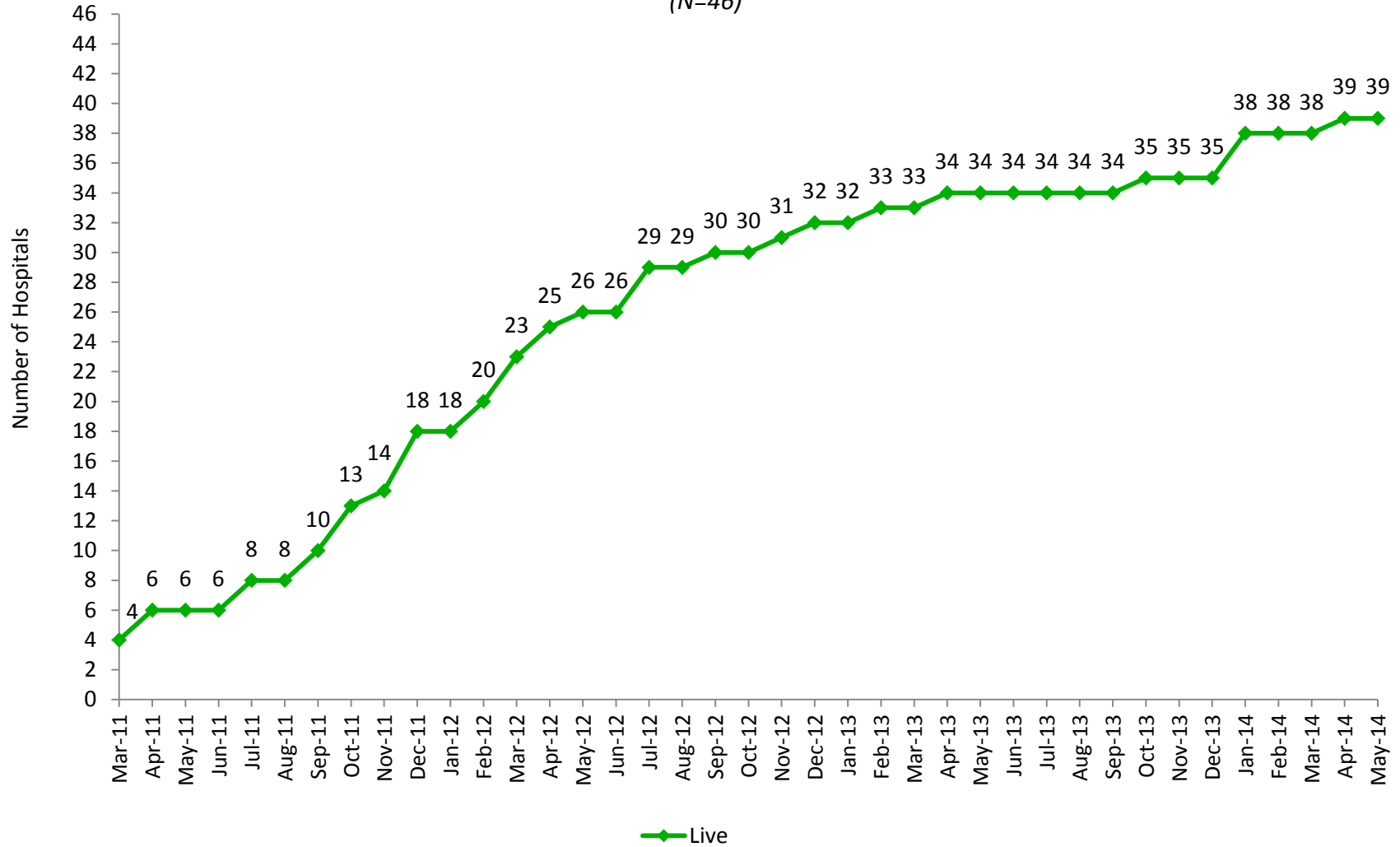
Key Terms:

Live: The number of hospitals using the laboratory documents exchange service

N: The number of acute care hospitals in Maryland

Hospital Data Submission Radiology Reports Live

(N=46)



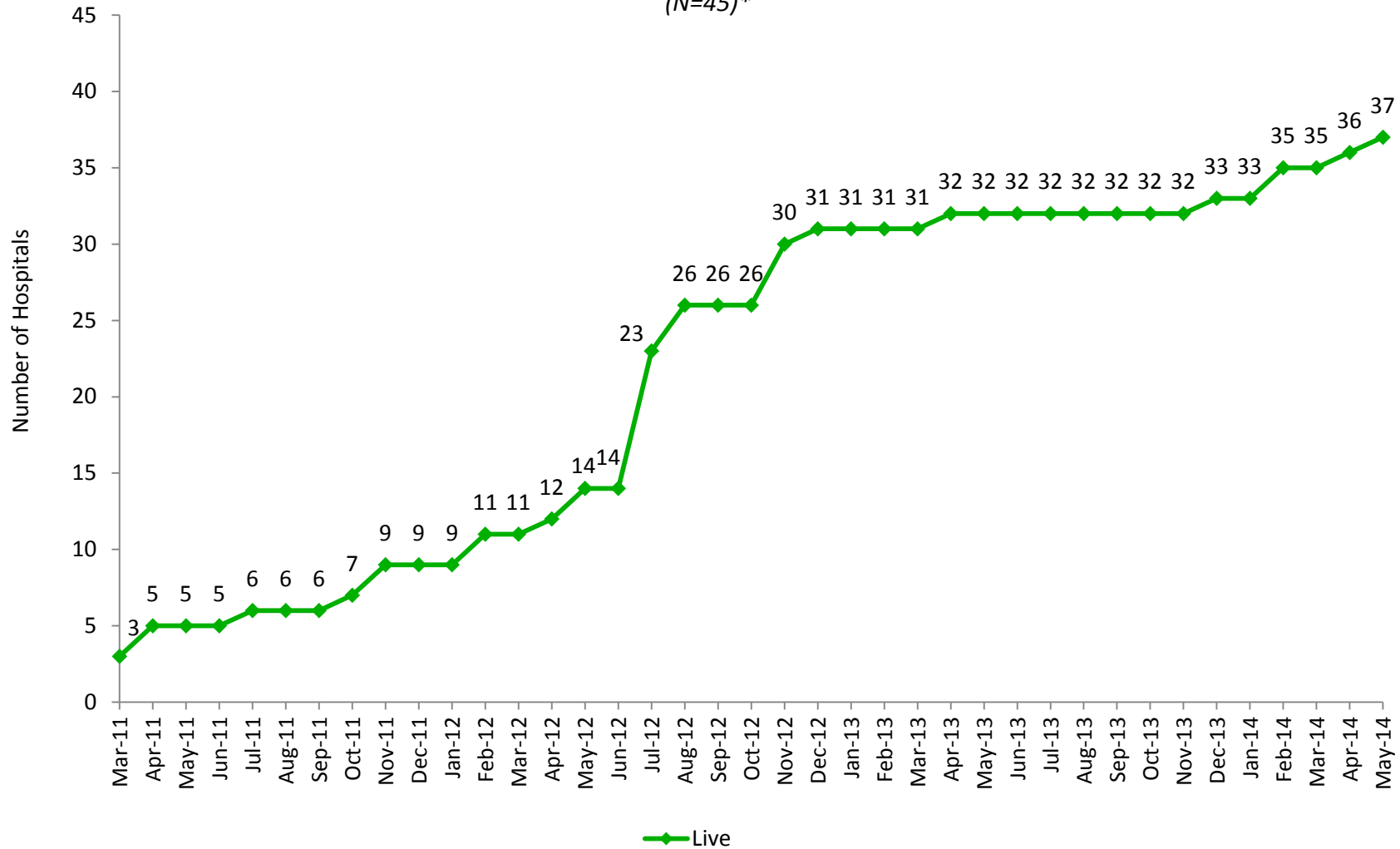
Key Terms:

Live: The number of hospitals using the radiology documents exchange service

N: The number of acute care hospitals in Maryland

Hospital Data Submission Transcribed Reports Live

(N=45)*



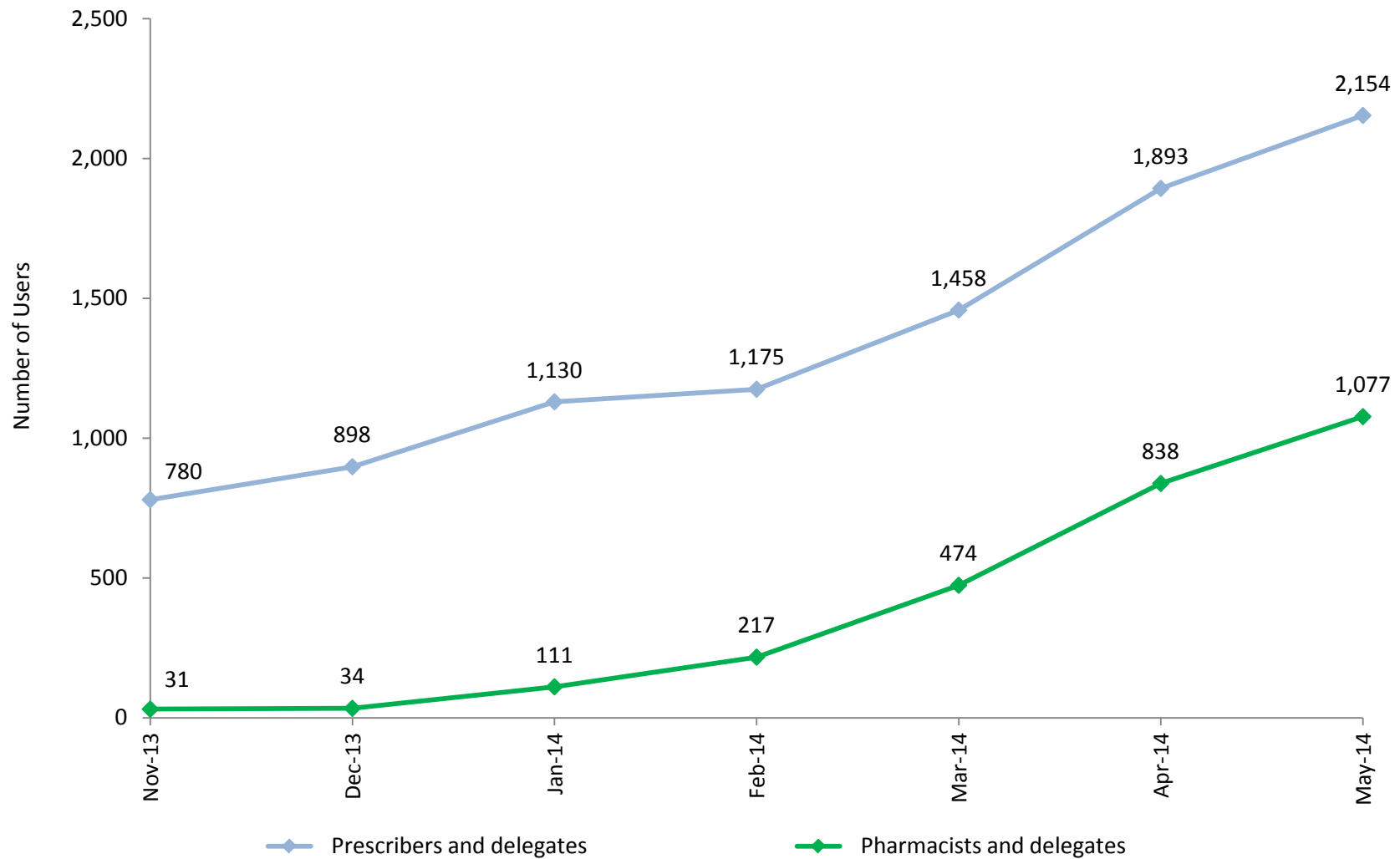
Key Terms:

Live: The number of hospitals using the transcribed exchange service

N: The number of acute care hospitals in Maryland

*Garrett County Memorial Hospital has no plans to submit transcribed reports to CRISP

Prescription Drug Monitoring Program



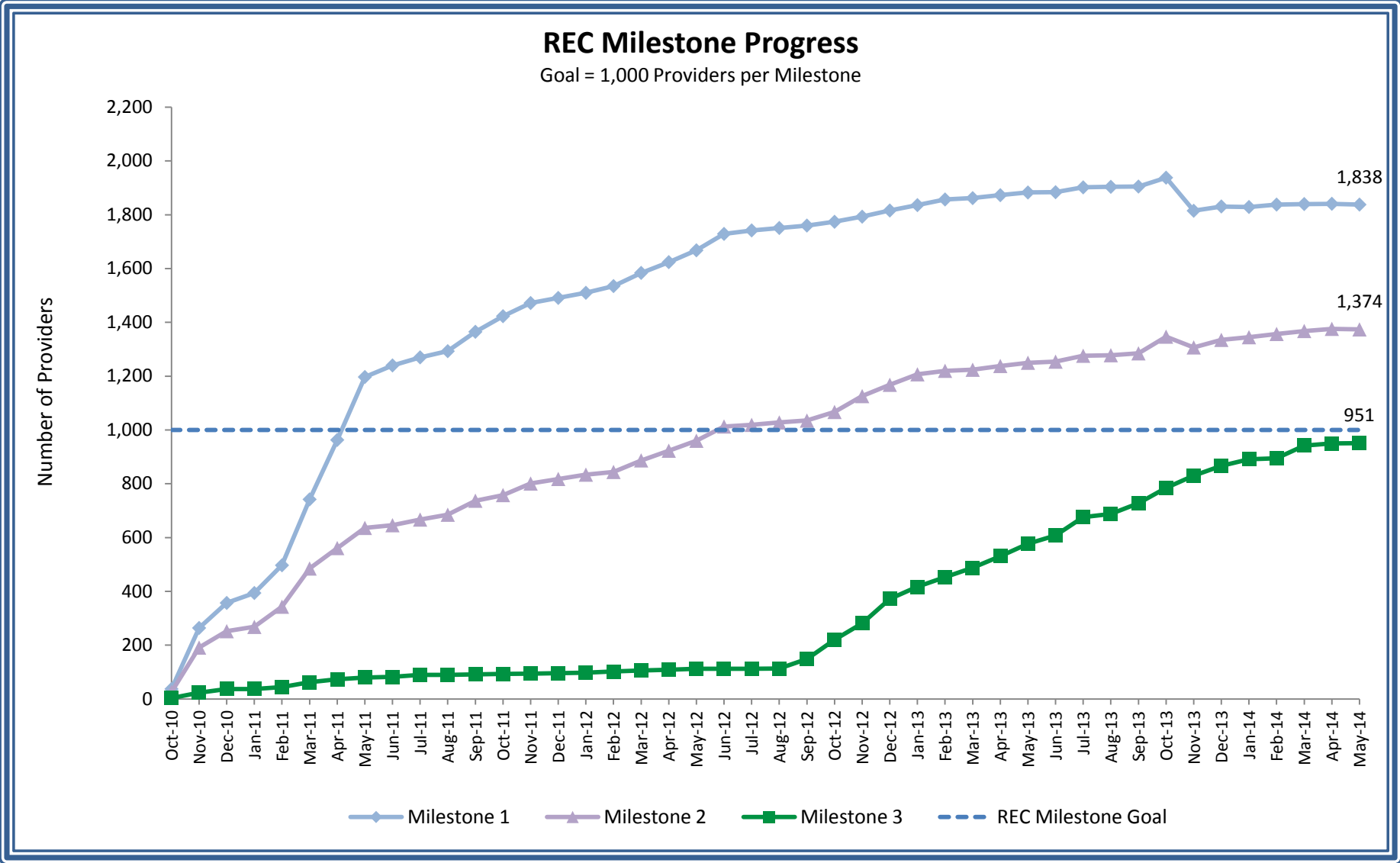
Key Terms:

Prescription Drug Monitoring Program (PDMP): Records of all dispensing of controlled dangerous substances (CDS) available in CRISP query portal that went live as a pilot in November 2013

Prescribers: Health care providers with the authorization to prescribe CDS

Pharmacists: Dispensers of CDS

Delegates: Licensed health professionals with access to PDMP under an overseeing prescriber or pharmacist



Key Terms:

REC: The Regional Extension Center (REC) provides technical assistance to priority primary care providers (PCPs) in adopting and using an electronic health record (EHR)

Milestone 1: A PCP that has signed a participation agreement with a management service organization

Milestone 2: A PCP that has adopted an EHR and is using certain functionalities of the system

Milestone 3: A PCP that has achieved meaningful use defined by the Centers for Medicare & Medicaid Services

REC Milestone Goal: The milestone goal was established by the Office of the National Coordinator for Health Information Technology

REC Progress						
Milestone	Provider did not have an EHR at sign up with the program		Provider had an EHR when signed up with the program		Total	
	#	%	#	%	#	%
Milestone 1	735	40	1,103	60	1,838	184
Milestone 2	689	50	685	50	1,374	137
Milestone 3	453	48	498	52	951	95

Key Terms:

REC: The Regional Extension Center (REC) provides technical assistance to priority primary care providers (PCPs) in adopting and using an electronic health record (EHR)

Milestone 1: A PCP that has signed a participation agreement with a management service organization

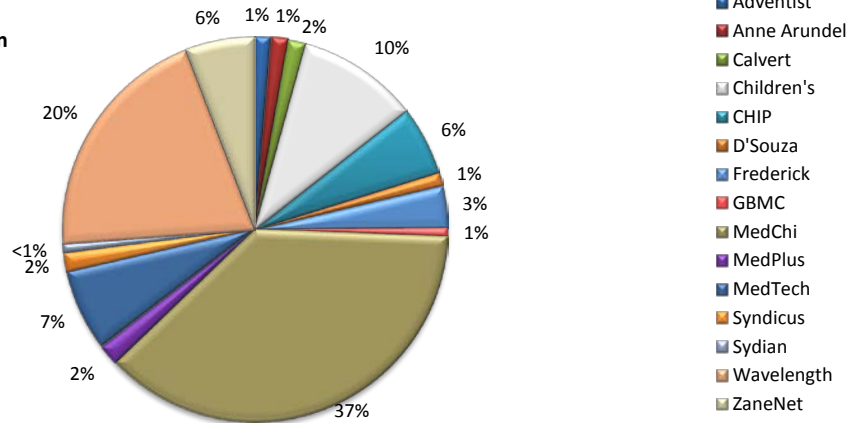
Milestone 2: A PCP that has adopted an EHR and is using certain functionalities of the system

Milestone 3: A PCP that has achieved meaningful use defined by the Centers for Medicare & Medicaid Services

REC Milestone Goal: The milestone goal was established by the Office of the National Coordinator for Health

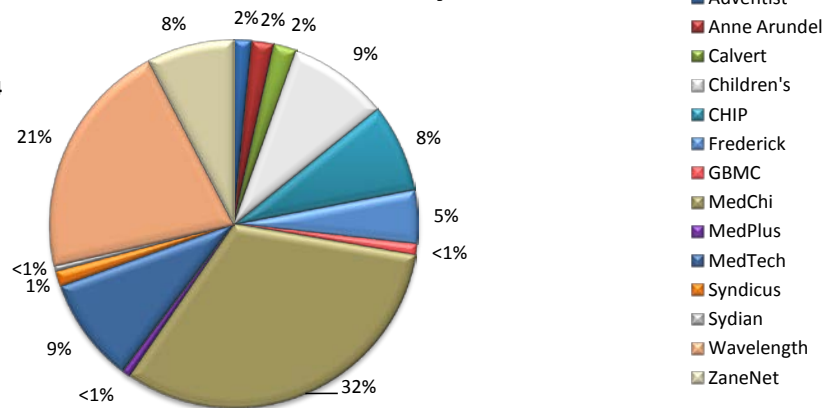
Maryland REC Progress - Milestone 1 Percent PCPs Participating by MSO

Total PCPs signed up with an MSO: 1,838



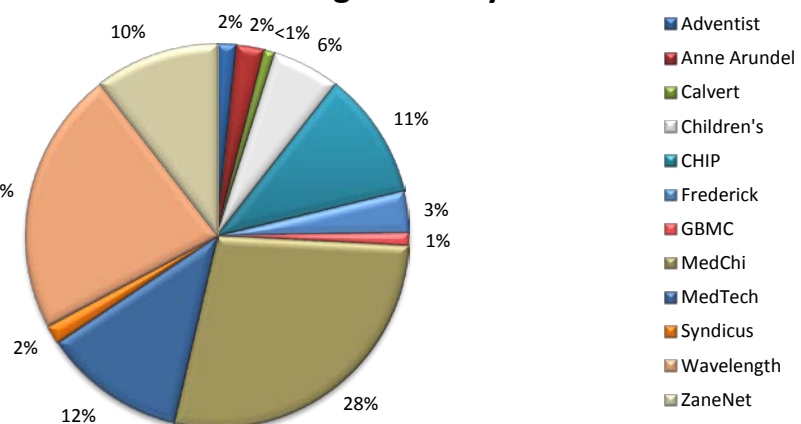
Maryland REC Progress - Milestone 2 Percent PCPs Live on an EHR by MSO

Total PCPs live on an EHR: 1,374



Maryland REC Progress - Milestone 3 Percent PCPs Achieved Meaningful Use by MSO

Total PCPs achieved meaningful use: 951



Key Terms:

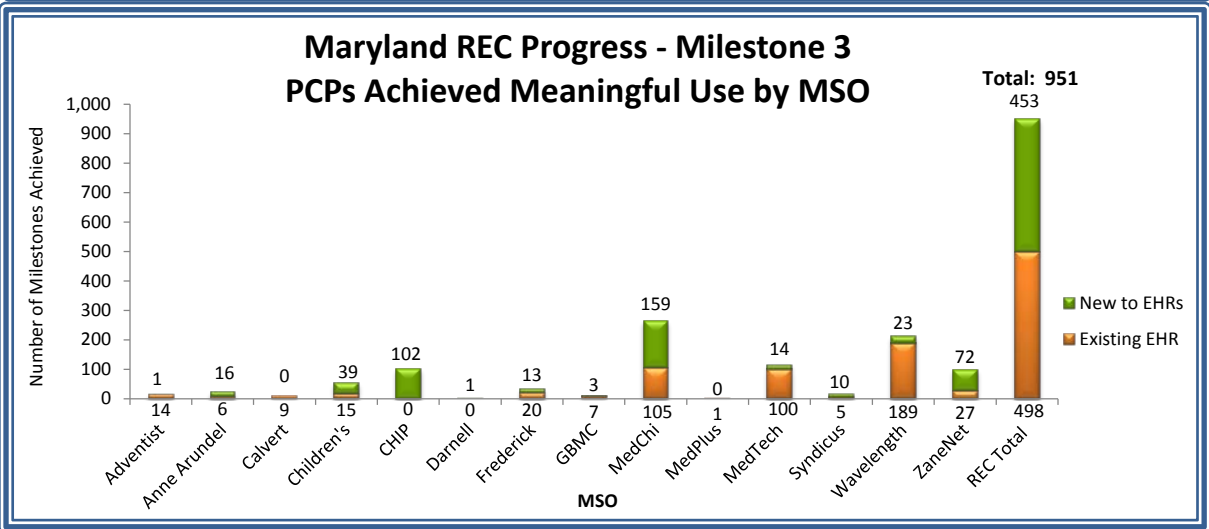
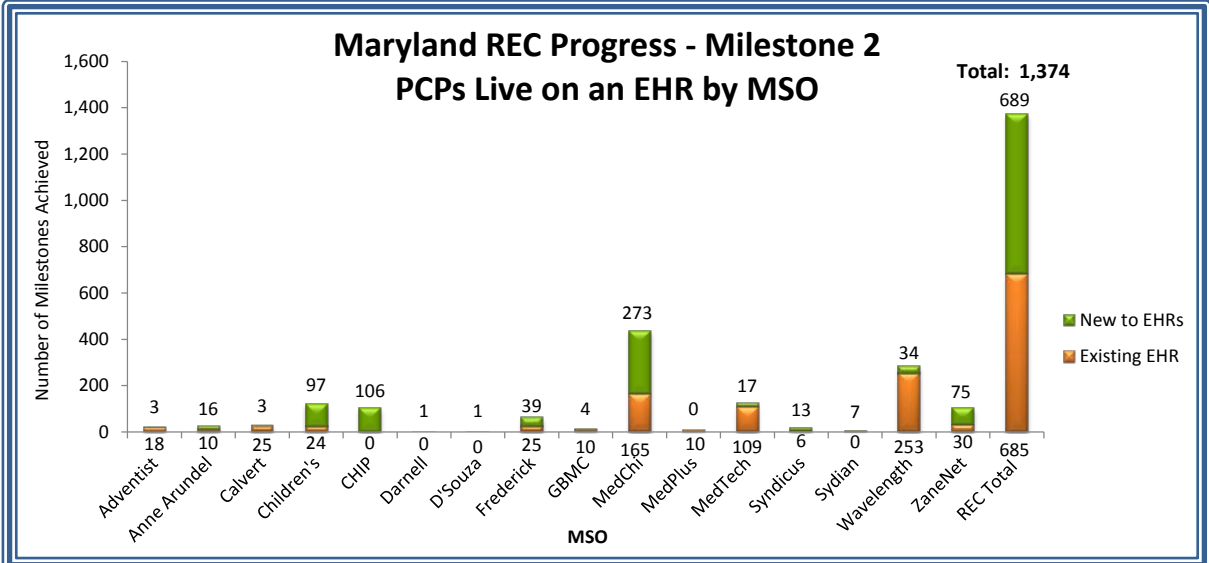
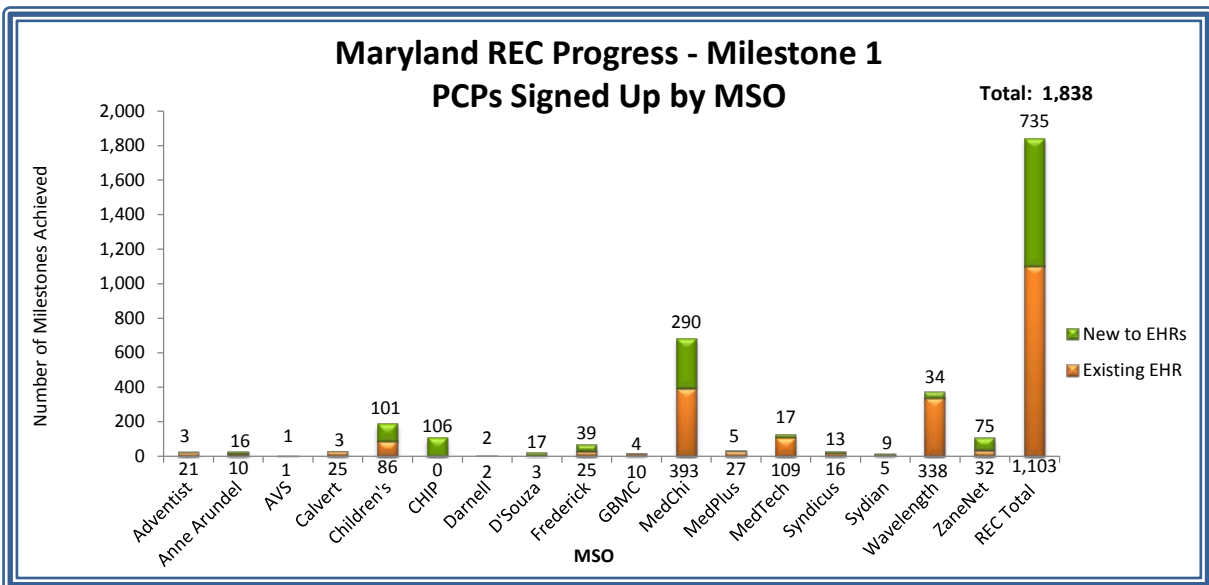
REC: The Regional Extension Center (REC) provides technical assistance to priority primary care providers (PCPs) in adopting and using an electronic health record (EHR)

Milestone 1: A PCP that has signed a participation agreement with a management service organization (MSO)

Milestone 2: A PCP that has adopted an EHR and is using certain functionalities of the system

Milestone 3: A PCP that has achieved meaningful use defined by the Centers for Medicare & Medicaid Services

Primary care provider: Primary-care providers in individual and small group practices (fewer than 10 physicians and/or other health care professionals with prescriptive privileges) primarily focused on primary care; and physicians, physician assistants, or nurse practitioners who provide primary care services in public and critical access hospitals, community health centers, rural health clinics, and in other settings that predominantly serve uninsured, underinsured, and medically underserved populations



Key Terms:

REC: The Regional Extension Center (REC) provides technical assistance to priority primary care providers (PCPs) in adopting and using an electronic health record (EHR)

Milestone 1: A PCP that has signed a participation agreement with a management service organization (MSO)

Milestone 2: A PCP that has adopted an EHR and is using certain functionalities of the system

Milestone 3: A PCP that has achieved meaningful use defined by the Centers for Medicare & Medicaid Services

Primary care provider: Primary-care providers in individual and small group practices (fewer than 10 physicians and/or other health care professionals with prescriptive privileges) primarily focused on primary care; and physicians, physician assistants, or nurse practitioners who provide primary care services in public and critical access hospitals, community health centers, rural health clinics, and in other settings that predominantly serve uninsured, underinsured, and medically underserved populations

Hospital Data Submission and Use

Count	Hospital	Current Status of Data Submission			Use of Services		
		Laboratory Reports	Radiology Reports	Transcribed Documents	Portal Live	Portal - Single Sign On*	ENS
1	Anne Arundel Medical Center	Mar-12	Mar-12	44	Jul-12	9	Sep-13
2	Atlantic General Hospital	Jun-11	Jun-11	Jun-11	Mar-12	9	21
3	Baltimore Washington Medical Center	Apr-14	Jan-14	44	Mar-12	9	21
4	Bon Secours Baltimore Health System	Feb-13	Feb-13	Feb-14	Jan-13	9	21
5	Calvert Memorial Hospital	Dec-12	Dec-12	Dec-12	Feb-13	9	21
6	Carroll Hospital Center	May-12	Apr-12	Apr-12	Jul-12	9	21
7	Doctors Community Hospital	Sep-12	Sep-13	Dec-13	Apr-13	9	Jun-13
8	Edward McCready Memorial Hospital	Aug-12	44	44	Feb-14	9	21
9	Fort Washington Medical Center	Sep-12	Mar-12	May-12	Sep-12	9	21
10	Frederick Memorial Hospital	Mar-12	Dec-11	44	Jul-12	9	21
11	Garrett County Memorial Hospital	Jun-11	Apr-12		Jan-14	9	21
12	Greater Baltimore Medical Center	Nov-12	Sep-12	Sep-12	Jun-12	9	21
13	Harford Memorial Hospital	Jul-12	Jul-12	Jul-12	Aug-12	9	21
14	Holy Cross Hospital	Sep-10	Sep-10	Sep-10	Dec-11	9	21
15	Howard County General Hospital	Feb-12	Nov-11	Nov-11	Mar-12	9	21
16	Johns Hopkins Bayview Medical Center	44	Feb-12	Jul-12	Apr-12	9	Mar-14
17	Johns Hopkins Hospital	44	Dec-11	May-12	Jul-12	9	21
18	Laurel Regional Hospital	44	44	Jul-12	Sep-13	9	21
19	MedStar Franklin Square Medical Center	Oct-11	Oct-11	Nov-12	Jul-12	Apr-13	Jan-14
20	MedStar Good Samaritan Hospital	Oct-11	Oct-11	Nov-12	Jun-12	Apr-13	21
21	MedStar Harbor Hospital	Oct-11	Sep-12	Nov-12	Mar-12	Apr-13	Aug-12
22	MedStar Montgomery Medical Center	Mar-13	Apr-11	Apr-11	Dec-11	Apr-13	21
23	MedStar Southern Maryland Hospital Center	44	Jul-11	Nov-11	Feb-13	9	21
24	MedStar St. Mary's Hospital	Jun-12	Mar-12	Dec-12	Jun-13	9	21
25	MedStar Union Memorial Hospital	Oct-10	Oct-10	Nov-12	May-12	Apr-13	21
26	Mercy Medical Center	44	Nov-12	May-14	Aug-12	9	21
27	Meritus Medical Center	Jul-12	Jul-12	Jul-12	Sep-12	9	21
28	Northwest Hospital Center	Dec-11	Dec-11	Aug-12	Sep-12	9	21
29	Peninsula Regional Medical Center	44	44	44	Sep-13	9	21
30	Prince George's Hospital Center	44	44	Jul-12	Apr-13	9	21
31	Shady Grove Adventist Hospital	Nov-11	Dec-10	Dec-11	Dec-11	9	Sep-13
32	Sinai Hospital	Dec-11	Dec-11	Aug-12	Sep-12	9	21
33	St. Agnes Hospital	Feb-12	Feb-12	Feb-12	Dec-12	9	21
34	Suburban Hospital	Oct-10	Oct-10	Oct-10	Sep-11	9	21
35	Union Hospital Cecil County	Aug-11	Sep-11	Sep-11	Sep-12	9	21
36	University of Maryland Charles Regional Medical Center	44	Apr-14	Apr-14	Jan-13	9	21
37	University of Maryland Medical Center	Mar-14	Jan-14	Jul-12	Jul-12	9	21
38	University of Maryland Medical Center Midtown Campus	44	Apr-13	Apr-13	Feb-13	9	21
39	University of Maryland Rehabilitation & Orthopedic Institute	44	Jan-14	Jul-12	Feb-14	9	21
40	University of Maryland Shore Medical Center at Chestertown	44	44	44	Mar-13	9	21
41	University of Maryland Shore Medical Center at Dorchester	44	44	44	Jan-14	9	21
42	University of Maryland Shore Medical Center at Easton	44	44	44	Oct-13	9	21
43	University of Maryland St. Joseph Medical Center	May-12	May-12	Feb-14	May-12	9	Aug-12
44	University of Maryland Upper Chesapeake Medical Center	Jul-12	Jul-12	Jul-12	Aug-12	9	21
45	Washington Adventist Hospital	Nov-11	Dec-10	Dec-10	Apr-11	9	21
46	Western Maryland Health System	Mar-11	Mar-11	Feb-12	Jan-11	9	21

Key	Total Number of Hospitals in Current Status			Total Number of Hospitals Using Services		
	Laboratory Reports	Radiology Reports	Transcribed Documents	Portal	Portal - SSO	ENS
Not Live (months in current status)	13	7	8	0	41	39
Data Quality Assurance & Monitoring (months in current status) <i>Hospitals standardizing and mapping data for transmission</i>	0	0	0	N/A	N/A	N/A
Live <i>The number of hospitals that have successfully completed the above listed activities and the date the hospital went live</i>	33	39	37	46	5	7
No plans to provide data feed	0	0	1	N/A	N/A	N/A

*Note: Pilot for Single Sign On to Portal launched in April 2013 and offered to all hospitals starting in September 2013

CRISP Portal, ENS & PDMP Adoption by Facility

Count	Organization	Type	Portal Participation Agreement	Training*	Portal Live*	ENS Live*	PDMP Access
1	AAMCs Community Health Center	Ambulatory	Anne Arundel Medical Center	May-14	May-14		
2	Aberdeen Family Practice	Ambulatory		Jan-14			Jan-14
3	Absolute Care of Baltimore	Ambulatory	Feb-14	Feb-14	Feb-14	Apr-14	Feb-14
4	Access Carroll	Ambulatory		Feb-14			Feb-14
5	Access Family Practice	Ambulatory		Jan-14			Jan-14
6	Accookeek Drug and Health Care Inc.	Pharmacy		Nov-13			Nov-13
7	Achor Care Pharmacy	Pharmacy		Jan-14			Jan-14
8	Addiction Treatment Services	Ambulatory		Apr-14			Apr-14
9	Adult and Pediatric Clinic, P.C.	Ambulatory		May-14			May-14
10	Advanced Diagnostic Radiology	Radiology	Mar-12				
11	Advanced Internal Medicine	Ambulatory	Jan-13	Jan-13	Feb-14		Feb-14
12	Advanced Interventional Pain & Sports Medicine Center	Ambulatory		Apr-14			Apr-14
13	Advanced Medical Care	Ambulatory	Apr-14	Apr-14	Apr-14		Apr-14
14	Advanced Pain Medicine Institute	Ambulatory		Mar-14			Apr-14
15	Advanced Primary and Geriatric Care	Ambulatory	Feb-14				
16	Advanced Radiology	Radiology	Sep-10	Mar-12	Mar-12		
17	Advanced Spine and Pain	Ambulatory		Jan-14			Jan-14
18	Adventist Healthcare	Health System	Nov-10	Oct-12			
19	Adventist Medical Group - Medical Faculty Associates	Ambulatory	Adventist Healthcare	Feb-14	Feb-14		Feb-14
20	AGHS Berlin Primary Care	Ambulatory	Atlantic General Hospital	Jun-13	Jun-13		
21	AGHS Townsend Medical Center	Ambulatory	Atlantic General Hospital				
22	Airpark Primary Care	Ambulatory	Nov-13	Dec-13	Dec-13		Dec-13
23	All Day Medical Care Clinic	Ambulatory	Aug-13	Sep-13	Sep-13		Mar-14
24	All Walks of Life	Ambulatory	Sep-13	Apr-14	Apr-14		Apr-14
25	Allan J. Chircus, M.D.	Ambulatory		Apr-14			Apr-14
26	Allegany County Health Department	Government Agency		Apr-14			Apr-14
27	Allegany Health Nursing and Rehabilitation	Ambulatory	Mar-12				
28	Allegheny Surgical Associates	Ambulatory	Sep-11				
29	Allergy & Asthma Associates	Ambulatory	Apr-14	Apr-14			Apr-14
30	Alliance Inc.	Ambulatory	Sep-13	Mar-14	Mar-14		Mar-14
31	Alternative Primary Care	Ambulatory	May-12				
32	Altmed Medical Center	Ambulatory		Jan-14			Jan-14
33	Ambulatory Care Pharmacy - Medical Center	Pharmacy		Nov-13			Nov-13
34	Ambulatory Care Pharmacy - Shady Grove	Pharmacy		Oct-13			Nov-13
35	AME Pharmacy, LLC	Pharmacy		Apr-14			Apr-14
36	American Health Associates Laboratory	Laboratory	Sep-13				
37	American Radiology	Radiology	Sep-10	Dec-12	Dec-12		
38	American Spine	Ambulatory		Dec-13			Dec-13
39	Amerigroup	Payor	Nov-12			Feb-13	
40	Andrew T. Gergely, M.D. & Associates, L.L.C.	Ambulatory		Apr-14			Apr-14
41	Annapolis Center for Integrative Medicine	Ambulatory	Sep-13	Aug-13	Sep-13		
42	Annapolis Internal Medicine	Ambulatory	Jul-13	Dec-13	Dec-13		Dec-13
43	Annapolis Neurology Associates	Ambulatory	Nov-13	Nov-13	Nov-13		Nov-13
44	Annapolis Primary Care	Ambulatory	Sep-13	Aug-13	May-14		
45	Annapolis Rheumatology Associates	Ambulatory		Apr-14			Apr-14
46	Anne Arundel County Health Department	Government Agency	Aug-13	Apr-14	Apr-14		Apr-14
47	Anne Arundel HealthCare Enterprises, Inc.	Ambulatory	Sep-11	Jun-13	Jun-13		
48	Anne Arundel Medical Center	Hospital	Sep-11	Jul-12	Jul-12	Sep-13	Nov-13
49	Anne Arundel Medical Center Cancer Registry	Ambulatory	Anne Arundel Medical Center			Jun-13	
50	Anne Arundel Physician Group	Ambulatory	Jul-13				

CRISP Portal, ENS & PDMP Adoption by Facility

Count	Organization	Type	Portal Participation Agreement	Training*	Portal Live*	ENS Live*	PDMP Access
51	Anne Arundel Urology	Ambulatory	Apr-13	Mar-13	Apr-13		Nov-13
52	Anne L. Grady, DO PA	Ambulatory	May-14	May-14	May-14		May-14
53	Anthony & Banerjee MD PA	Ambulatory	Feb-13	Feb-13	Mar-13		
54	Apple Discount Drugs	Pharmacy	Oct-12	Oct-12	Oct-12		Nov-13
55	Apple Discount Drugs #2	Pharmacy		May-14			May-14
56	Apple Discount Drugs #4	Pharmacy		Jan-14			Jan-14
57	Apple Infusion	Pharmacy		Jan-14			Jan-14
58	Arain A Waseem MD PA FICS	Ambulatory		May-14			May-14
59	Arcola Health and Rehab Center	Long Term Care	Dec-11	Mar-12			
60	Arnold Professional Pharmacy	Pharmacy		Jan-14			Jan-14
61	Arthritis & Rheumatism Associates	Ambulatory	Feb-12	Mar-12	Mar-12		Jan-14
62	Arundel Lodge	Ambulatory	Aug-13	Nov-13	Nov-13	Nov-13	
63	Arundel Medical Group, Inc.	Ambulatory		Apr-14			Apr-14
64	Arundel Mills Pharmacy	Pharmacy		Jan-14			Jan-14
65	Arundel Neurology	Ambulatory		Apr-14			Apr-14
66	Arundel Pharmacy	Pharmacy		Feb-14			Feb-14
67	Aspen Day Treatment	Ambulatory		Apr-14			Apr-14
68	Aspire Wellness Center, Inc	Ambulatory		Apr-14			Apr-14
69	Associates in Cardiology	Ambulatory	Aug-11	Dec-11	Sep-13		Nov-13
70	Atlantic General Hospital	Hospital	Aug-11	Mar-12	Mar-12		
71	Austin Pharmacy & Medical Supplies	Pharmacy	Feb-14	Feb-14			Feb-14
72	Avalon Professional Pharmacy	Pharmacy		Feb-14			Feb-14
73	Baltimore Highlands Pharmacy	Pharmacy		Mar-14			Mar-14
74	Baltimore Medical System, Inc.	FQHC	Oct-13	Oct-13	Oct-13	Nov-13	Nov-13
75	Baltimore Medical Systems- Belair - Edison Family Health	Ambulatory	Baltimore Medical System, Inc.	Mar-14	Mar-14		Mar-14
76	Baltimore Medical Systems Inc - Matilda Koval Medical Center	Pharmacy	Baltimore Medical System, Inc.	Apr-14			Apr-14
77	Baltimore Medical Systems Inc. - Fleet Street	Ambulatory	Baltimore Medical System, Inc.	Mar-14	Mar-14		Mar-14
78	Baltimore Neurosurgery and Spine Center	Ambulatory	Oct-11	Feb-14			Mar-14
79	Baltimore Pain Relief Center - White Marsh	Ambulatory	Apr-14	Apr-14			Apr-14
80	Baltimore VAMCS, Loch Raven	Hospital		Apr-14			Apr-14
81	Baltimore Washington Medical Center	Hospital	University of Maryland Medical System	Mar-12	Mar-12		Nov-13
82	Bay Area Orthopedics	Ambulatory		Mar-14			Mar-14
83	Bay Crossing Family Medicine	Ambulatory	Apr-13	May-13	May-13	Jun-13	Dec-13
84	Bay Hundred Medical Center	FQHC	Dec-13	Dec-13	Dec-13		
85	Bayside Family Practice, LLC	Ambulatory	Nov-13	Feb-14	Feb-14	Dec-13	Feb-14
86	Bayside Internal Medicine	Ambulatory		Feb-14			Feb-14
87	Bayside Primary Care	Ambulatory		Apr-14			Apr-14
88	Bayview Care Center	Long Term Care	Aug-11	Apr-12	Apr-12		
89	Bayview Pharmacy	Pharmacy		Apr-14			Apr-14
90	Bel Air Center for Addictions	Ambulatory		Jan-14			Jan-14
91	Benjamin Lee MD	Ambulatory		Apr-14			Apr-14
92	Bergand Group	Ambulatory		Mar-14			Mar-14
93	Bethesda Medical Associates	Ambulatory	Jun-11	Dec-11	Jan-12		Jan-14
94	Betty Toloria Braswell MD	Ambulatory		Jan-14			Jan-14
95	BH Health Services, Inc.	Ambulatory	Apr-13	May-13	May-13		Nov-13
96	Bich T. Duong MD	Ambulatory		Apr-14			Apr-14
97	BioReference Laboratories	Laboratory	Mar-13				
98	Blakeslee and Eichelberger, LLC	Ambulatory		Apr-14			Apr-14
99	Blue Heron Medical Group, LLC	Ambulatory		Apr-14			Apr-14
100	Bon Secours Hospital	Hospital	Jan-12	Jan-13	Jan-13		Nov-13
101	Bose Medical Group	Ambulatory	Mercy Medical Center			May-14	

CRISP Portal, ENS & PDMP Adoption by Facility

Count	Organization	Type	Portal Participation Agreement	Training*	Portal Live*	ENS Live*	PDMP Access
102	Bowie Health Center	Ambulatory	Dimensions Health	Aug-13	Jul-13		Nov-13
103	Bowie Internal Medicine	Ambulatory	May-12	May-12	May-12		
104	Braddock Medical Group	Ambulatory		Feb-14			Feb-14
105	Braddock Oncology Associates	Radiology	Jan-11	Jan-13	Jan-13		
106	Bravo	Payor	Dec-12			Dec-12	
107	Bravo Health Advanced Care Center	Ambulatory	Feb-13	Feb-13	Mar-13		Nov-13
108	Brenda C. Scribner MD PA	Ambulatory		Apr-14			Apr-14
109	Broadmead Medical Services	Ambulatory	Apr-12				
110	Broadneck Pharmacy	Pharmacy		Oct-13			Nov-13
111	Brookville Pharmacy - Brooksville	Pharmacy		Mar-14			Mar-14
112	Bruce S. Rosenblum MD PC	Ambulatory		Feb-14			Feb-14
113	Brunswick Pharmacy	Pharmacy		Feb-14			Feb-14
114	Burt Littman, M.D.	Ambulatory		Feb-14			Feb-14
115	Calvert County Health Department	Government Agency		Jan-14			Jan-14
116	Calvert County Nursing Center	Long Term Care	Feb-12				
117	Calvert Family Practice Associates, PA	Ambulatory		Apr-14			Apr-14
118	Calvert Internal Medicine Group	Ambulatory	Mar-12	Jul-12	Jul-12	Oct-12	Nov-13
119	Calvert Manor Healthcare	Long Term Care	Jun-12	Jul-12	Jul-12		
120	Calvert Memorial Hospital	Hospital	Aug-11	Jan-13	Feb-13		Nov-13
121	Calvert Physician Associates	Ambulatory		Apr-14			Apr-14
122	Cambridge Pediatrics, LLC	Ambulatory	Feb-12	Mar-12	Mar-12	Jun-13	Apr-14
123	Cancer Care Center of Frederick	Ambulatory	Mar-12	Mar-12	Mar-12		
124	Cape Drugs	Pharmacy		Jan-14			Jan-14
125	Capital Internal Medicine	Ambulatory		Apr-14			Apr-14
126	Capital Primary Care	Ambulatory	Apr-13				
127	Capitol Orthopaedics & Rehabilitation, LLC	Ambulatory	May-14	May-14			May-14
128	Cardiovascular Specialists of Central MD	Ambulatory	Aug-11	Nov-11			
129	Care Connection Inc.	Ambulatory	Jul-13	Aug-13			
130	Carefirst	Payor	Jul-13			Nov-13	
131	Carla B. Macleod & Associates, LLC	Ambulatory	May-14				
132	Caroline Nursing and Rehab	Long Term Care	Jan-12				
133	Carroll Family Medicine	Ambulatory	Oct-12				
134	Carroll Health Group	Ambulatory	Aug-11	Jan-13	Jan-13		May-14
135	Carroll Hospital Center	Hospital	Aug-11	Jul-12	Jul-12		Nov-13
136	Carroll Mental Health Care	Ambulatory		Apr-14			Apr-14
137	Catholic Charities Child & Family Services	Ambulatory	Sep-13				
138	Catholic Charities of Baltimore	Ambulatory		Mar-14			Mar-14
139	Catonsville Pharmacy	Pharmacy		Feb-14			Feb-14
140	CBHS - Columbia	FQHC	Chase Brexton Health Services	Aug-13	Oct-13		Feb-14
141	CBHS - Easton	FQHC	Chase Brexton Health Services	Jul-13	Jul-13		Nov-13
142	CBHS - MICA Wellness Center	FQHC	Chase Brexton Health Services	Jun-13	Jul-13		
143	CBHS - Mt Vernon Center	FQHC	Chase Brexton Health Services	Sep-13	Oct-13		Mar-14
144	CBHS - Randallstown	FQHC	Chase Brexton Health Services	Jun-13	Jul-13		Nov-13
145	CCI - Franklin Park	Ambulatory	Community Clinics Inc	Mar-14	Mar-14		
146	CCI - Gaithersburg	Ambulatory	Community Clinics Inc	Apr-14	Apr-14		Apr-14
147	CCI - Silver Spring	Ambulatory	Community Clinics Inc	Mar-13	May-13		Nov-13
148	CCI - Takoma Park	Ambulatory	Community Clinics Inc	Mar-14	Mar-14		Mar-14
149	Cecil County Health Department	Government Agency	Dec-12				
150	Centennial Medical Group	Ambulatory	May-13	Jun-13	Jun-13	Jun-13	Nov-13

CRISP Portal, ENS & PDMP Adoption by Facility

Count	Organization	Type	Portal Participation Agreement	Training*	Portal Live*	ENS Live*	PDMP Access
151	Center for Addiction Medicine	Ambulatory		Feb-14			Feb-14
152	Center for Pain and Rehab	Ambulatory		Jan-14			Jan-14
153	Center for Pelvic Pain in Annapolis	Ambulatory		Feb-14			Feb-14
154	Center for Sleep and Wake Disorders	Ambulatory	Jan-11				
155	Central Maryland Urology Associates	Ambulatory	Nov-12	Nov-12	Nov-12		
156	Centreville Family Medicine	Ambulatory	Sep-11	Aug-13			
157	Channel Marker Inc.	Ambulatory	Nov-13			Jan-14	
158	Chapel View Family Care	Ambulatory	Apr-13	Jul-13	Aug-13	Mar-14	
159	Charles A. Haile, M.D.	Ambulatory	Mar-14				
160	Charlotte Hall Veterans Home	Ambulatory	Nov-12	Nov-12	Nov-12		Nov-13
161	Charter Internal Medicine, LLC	Ambulatory	Mar-13	Mar-13	Mar-13		
162	Charu Mehta, MD	Ambulatory		May-14			May-14
163	Chase Brexton Health Services	FQHC	Apr-13	Jun-13	Jun-13	Jun-13	Nov-13
164	Chase Brexton Health Services Pharmacy	Pharmacy	Chase Brexton Health Services	Apr-14	Apr-14		Apr-14
165	Chase Brexton Pharmacy Columbia	Pharmacy	Chase Brexton Health Services	Apr-14	Apr-14		Apr-14
166	Chesapeake Oncology-Hematology Associates	Ambulatory		Mar-14			Mar-14
167	Chesapeake Otolaryngology Associates	Ambulatory	Jul-13	Aug-13	Sep-13		Nov-13
168	Chesapeake Potomac Regional Cancer Center	Ambulatory	Mar-12	Jul-12	Jul-12		
169	Chesapeake Primary Care Group	Ambulatory		Jan-14			Jan-14
170	Children's Medical Group	Ambulatory	May-12	Jul-12	Jul-12		
171	Choice Pain & Rehabilitation Center LLC	Ambulatory		May-14			May-14
172	Choice Pharmacy	Pharmacy		Mar-14			Mar-14
173	Choptank Community Health Services, Inc.	FQHC	Dec-13	Nov-13	Dec-13		Dec-13
174	Chukwuma Ebo, M.D.	Ambulatory		Feb-14			Feb-14
175	Chul S. Kwon, M.D.	Ambulatory		Mar-14			Mar-14
176	Citizens Care & Rehabilitation Center	Long Term Care	May-13				
177	Citizens Pharmacy Services	Pharmacy		Feb-14			Feb-14
178	CITY DISCOUNT PHARMACY	Pharmacy		May-14			May-14
179	City Pharmacy of Elkton Inc	Pharmacy		Mar-14			Mar-14
180	Clear Spring Pharmacy	Pharmacy		Jan-14			Jan-14
181	Clevinger Neurology	Ambulatory		May-14			May-14
182	Clinical Associates	Ambulatory	May-13	Jun-13	Jul-13	Jan-14	Nov-13
183	Clinical Associates - GBMC Physicians' Pavilion	Ambulatory	Clinical Associates	Jun-13	Apr-13		
184	Clinical Associates - Reisterstown	Ambulatory	Clinical Associates	Mar-14	Mar-14		
185	Clinical Associates - Rotunda	Ambulatory	Clinical Associates	Feb-14	Feb-14		
186	Clinical Associates - Saint Joseph Professional Center Building	Ambulatory	Clinical Associates				
187	Clinical Associates - The Quarry	Ambulatory	Clinical Associates				
188	Clinical Associates - Towson	Ambulatory	Clinical Associates	Feb-14	Feb-14		
189	Clinical Associates - Woodholme	Ambulatory	Clinical Associates				
190	Coastal Drug	Pharmacy		Apr-14			Apr-14
191	Cohen & Pushkin, M.D., P.A.	Ambulatory	May-14	May-14			May-14
192	Collingswood Nursing and Rehabilitation Center	Long Term Care	Jul-13	Jan-14	Jan-14		
193	Columbia Implant and Cosmetic Dentistry	Ambulatory		May-14			May-14
194	Columbia Medical Practice	Ambulatory	Feb-13	Sep-13	Sep-13	Apr-13	Nov-13
195	Columbia Pharmacy	Pharmacy		May-14			May-14
196	Committed to Change	Ambulatory		May-14			May-14
197	Community Care Rx	Pharmacy		Mar-14			Mar-14

CRISP Portal, ENS & PDMP Adoption by Facility

Count	Organization	Type	Portal Participation Agreement	Training*	Portal Live*	ENS Live*	PDMP Access
198	Community Clinics Inc	FQHC	Apr-13	Jul-12	Feb-14	Dec-13	Feb-14
199	Community Family Medicine PC	Ambulatory		May-14			May-14
200	Community Pharmacy	Pharmacy		Feb-14			Feb-14
201	Community Pharmacy - Baltimore	Pharmacy		Feb-14			Feb-14
202	Community Radiology Associates	Radiology	Sep-10	Dec-11	Dec-11		May-14
203	Comprehensive Pain Center	Ambulatory		Mar-14			Mar-14
204	Comprehensive Primary Care	Ambulatory	Aug-12	Jun-12	Nov-12	Nov-13	Nov-13
205	Comprehensive Women's Health	Ambulatory	Jul-12	Jul-12	Jul-12		Mar-14
206	Contact Lens Associates	Ambulatory	Jun-13	Jun-13	Sep-13		
207	Co-op Pharmacy	Pharmacy		May-14			May-14
208	Cornerstone Montgomery	Ambulatory	Jul-12	Sep-12	Sep-12		
209	Cornerstone Pain & Restoration	Ambulatory		Apr-14			Apr-14
210	Costco Pharmacy	Pharmacy		Mar-14			Mar-14
211	Costco Pharmacy #1000	Pharmacy		Feb-14			Feb-14
212	Costco Pharmacy #1039	Pharmacy		Apr-14			Apr-14
213	Costco Pharmacy #1078	Pharmacy		Feb-14			Feb-14
214	Costco Pharmacy #1124	Pharmacy		Feb-14			Feb-14
215	Costco Pharmacy #203	Pharmacy		Jan-14			Jan-14
216	Costco Pharmacy #208	Pharmacy		Jan-14			Jan-14
217	Costco Pharmacy #325	Pharmacy		Feb-14			Feb-14
218	Costco Pharmacy #330	Pharmacy		Feb-14			Feb-14
219	Costco Wholesale #213	Pharmacy		Feb-14			Feb-14
220	Costco Wholesale #214	Pharmacy		Feb-14			Feb-14
221	Courtland Gardens	Long Term Care	LifeBridge Health				
222	Crain Medical PA	Ambulatory		Apr-14			Apr-14
223	Crain Towers Pharmacy	Pharmacy		Jan-14			Jan-14
224	Crisfield Clinic	Ambulatory		Jan-14			Jan-14
225	Crofton Internal Medicine	Ambulatory		Jan-14			Jan-14
226	Crossroads Community Inc.	Ambulatory	Feb-14				
227	Crossroads Medical Associates	Ambulatory	Jan-14	Jan-14	Feb-14	Apr-14	Feb-14
228	CVS Pharmacy #10203	Pharmacy		Apr-14			Apr-14
229	CVS Pharmacy #1177	Pharmacy		Mar-14			Mar-14
230	CVS Pharmacy #1330	Pharmacy		Apr-14			Apr-14
231	CVS Pharmacy #1431	Pharmacy		Apr-14			Apr-14
232	CVS Pharmacy #1434	Pharmacy		May-14			May-14
233	CVS Pharmacy #1435	Pharmacy		Mar-14			Apr-14
234	CVS Pharmacy #1439	Pharmacy		May-14			May-14
235	CVS Pharmacy #1440	Pharmacy		Apr-14			Apr-14
236	CVS Pharmacy #1442	Pharmacy		Apr-14			Apr-14
237	CVS Pharmacy #1445	Pharmacy		Apr-14			Apr-14
238	CVS Pharmacy #1446	Pharmacy		Apr-14			Apr-14
239	CVS Pharmacy #1447	Pharmacy		Mar-14			Mar-14
240	CVS Pharmacy #1449	Pharmacy		Mar-14			Apr-14
241	CVS Pharmacy #1451	Pharmacy		Mar-14			Mar-14
242	CVS Pharmacy #1453	Pharmacy		Apr-14			Apr-14
243	CVS Pharmacy #1456	Pharmacy		May-14			May-14
244	CVS Pharmacy #1458	Pharmacy		Mar-14			Mar-14
245	CVS Pharmacy #1459	Pharmacy		Apr-14			Apr-14
246	CVS Pharmacy #1461	Pharmacy		Mar-14			Mar-14
247	CVS Pharmacy #1465	Pharmacy		Apr-14			Apr-14
248	CVS Pharmacy #1468	Pharmacy		Apr-14			Apr-14
249	CVS Pharmacy #1470	Pharmacy		Apr-14			Apr-14
250	CVS Pharmacy #1472	Pharmacy		Apr-14			Apr-14
251	CVS Pharmacy #1475	Pharmacy		Apr-14			Apr-14
252	CVS Pharmacy #1476	Pharmacy		Mar-14			Apr-14
253	CVS Pharmacy #1479	Pharmacy		Mar-14			Mar-14
254	CVS Pharmacy #1484	Pharmacy		Mar-14			Mar-14
255	CVS Pharmacy #1485	Pharmacy		Apr-14			Apr-14
256	CVS Pharmacy #1488	Pharmacy		Apr-14			Apr-14
257	CVS Pharmacy #1490	Pharmacy		May-14			May-14
258	CVS Pharmacy #1491	Pharmacy		Apr-14			Apr-14

CRISP Portal, ENS & PDMP Adoption by Facility

Count	Organization	Type	Portal Participation Agreement	Training*	Portal Live*	ENS Live*	PDMP Access
259	CVS Pharmacy #1492	Pharmacy		Mar-14			Mar-14
260	CVS Pharmacy #1495	Pharmacy		Mar-14			Mar-14
261	CVS Pharmacy #1496	Pharmacy		Apr-14			Apr-14
262	CVS Pharmacy #1497	Pharmacy		Apr-14			Apr-14
263	CVS Pharmacy #1498	Pharmacy		Apr-14			Apr-14
264	CVS Pharmacy #1499	Pharmacy		Mar-14			Mar-14
265	CVS Pharmacy #1500	Pharmacy		Mar-14			Mar-14
266	CVS Pharmacy #1503	Pharmacy		Apr-14			Apr-14
267	CVS Pharmacy #1504	Pharmacy		Apr-14			Apr-14
268	CVS Pharmacy #1505	Pharmacy		Apr-14			Apr-14
269	CVS Pharmacy #1506	Pharmacy		Apr-14			Apr-14
270	CVS Pharmacy #1510	Pharmacy		Apr-14			Apr-14
271	CVS Pharmacy #1511	Pharmacy		Apr-14			Apr-14
272	CVS Pharmacy #1514	Pharmacy		Apr-14			Apr-14
273	CVS Pharmacy #1515	Pharmacy		May-14			May-14
274	CVS Pharmacy #1518	Pharmacy		Mar-14			Mar-14
275	CVS Pharmacy #1521	Pharmacy		Mar-14			Mar-14
276	CVS Pharmacy #1522	Pharmacy		Mar-14			Apr-14
277	CVS Pharmacy #1524	Pharmacy		Mar-14			Mar-14
278	CVS Pharmacy #1621	Pharmacy		Apr-14			Apr-14
279	CVS Pharmacy #169	Pharmacy		Apr-14			Apr-14
280	CVS Pharmacy #1735	Pharmacy		Apr-14			Apr-14
281	CVS Pharmacy #1790	Pharmacy		Jan-14			Jan-14
282	CVS Pharmacy #1795	Pharmacy		Apr-14			Apr-14
283	CVS Pharmacy #1797	Pharmacy		Mar-14			Mar-14
284	CVS Pharmacy #1800	Pharmacy		Apr-14			Apr-14
285	CVS Pharmacy #1831	Pharmacy		Apr-14			Apr-14
286	CVS Pharmacy #1880	Pharmacy		Apr-14			Apr-14
287	CVS Pharmacy #1881	Pharmacy		Mar-14			Mar-14
288	CVS Pharmacy #1964	Pharmacy		Mar-14			Mar-14
289	CVS Pharmacy #1973	Pharmacy		Apr-14			Apr-14
290	CVS Pharmacy #2005	Pharmacy		May-14			May-14
291	CVS Pharmacy #2010	Pharmacy		Apr-14			Apr-14
292	CVS Pharmacy #2033	Pharmacy		Apr-14			Apr-14
293	CVS Pharmacy #2034	Pharmacy		Apr-14			Apr-14
294	CVS Pharmacy #2045	Pharmacy		Mar-14			Mar-14
295	CVS Pharmacy #2066	Pharmacy		Mar-14			Mar-14
296	CVS Pharmacy #2160	Pharmacy		Apr-14			Apr-14
297	CVS Pharmacy #2216	Pharmacy		Apr-14			Apr-14
298	CVS Pharmacy #2230	Pharmacy		Mar-14			Mar-14
299	CVS Pharmacy #2239	Pharmacy		Apr-14			Apr-14
300	CVS Pharmacy #2335	Pharmacy		Apr-14			Apr-14
301	CVS Pharmacy #2422	Pharmacy		Apr-14			Apr-14
302	CVS Pharmacy #244	Pharmacy		Mar-14			Mar-14
303	CVS Pharmacy #2455	Pharmacy		Apr-14			Apr-14
304	CVS Pharmacy #2499	Pharmacy		Mar-14			Mar-14
305	CVS Pharmacy #2531	Pharmacy		Mar-14			Mar-14
306	CVS Pharmacy #2549	Pharmacy		Mar-14			Mar-14
307	CVS Pharmacy #2775	Pharmacy		Mar-14			Mar-14
308	CVS Pharmacy #2778	Pharmacy		Apr-14			Apr-14
309	CVS Pharmacy #2779	Pharmacy		Apr-14			Apr-14
310	CVS Pharmacy #2865	Pharmacy		Mar-14			Mar-14
311	CVS Pharmacy #2883	Pharmacy		Apr-14			Apr-14
312	CVS Pharmacy #2956	Pharmacy		Mar-14			Mar-14
313	CVS Pharmacy #3166	Pharmacy		May-14			May-14
314	CVS Pharmacy #352	Pharmacy		Mar-14			Mar-14
315	CVS Pharmacy #4017	Pharmacy		Apr-14			Apr-14
316	CVS Pharmacy #4018	Pharmacy		Mar-14			Apr-14
317	CVS Pharmacy #4030	Pharmacy		Mar-14			Mar-14
318	CVS Pharmacy #4044	Pharmacy		Mar-14			Mar-14
319	CVS Pharmacy #4079	Pharmacy		Mar-14			Mar-14

CRISP Portal, ENS & PDMP Adoption by Facility

Count	Organization	Type	Portal Participation Agreement	Training*	Portal Live*	ENS Live*	PDMP Access
320	CVS Pharmacy #4102	Pharmacy		Mar-14			Apr-14
321	CVS Pharmacy #4107	Pharmacy		Apr-14			Apr-14
322	CVS Pharmacy #4129	Pharmacy		Apr-14			Apr-14
323	CVS Pharmacy #4170	Pharmacy		Apr-14			Apr-14
324	CVS Pharmacy #4199	Pharmacy		Apr-14			Apr-14
325	CVS Pharmacy #4212	Pharmacy		Mar-14			Mar-14
326	CVS Pharmacy #4220	Pharmacy		Apr-14			Apr-14
327	CVS Pharmacy #4225	Pharmacy		May-14			May-14
328	CVS Pharmacy #4274	Pharmacy		May-14			May-14
329	CVS Pharmacy #4411	Pharmacy		Mar-14			Mar-14
330	CVS Pharmacy #4429	Pharmacy		Apr-14			Apr-14
331	CVS Pharmacy #452	Pharmacy		May-14			May-14
332	CVS Pharmacy #4650	Pharmacy		May-14			May-14
333	CVS Pharmacy #5650	Pharmacy		Apr-14			Apr-14
334	CVS Pharmacy #5706	Pharmacy		Mar-14			Mar-14
335	CVS Pharmacy #5728	Pharmacy		Apr-14			Apr-14
336	CVS Pharmacy #5909	Pharmacy		Apr-14			Apr-14
337	CVS Pharmacy #5926	Pharmacy		Apr-14			Apr-14
338	CVS Pharmacy #6614	Pharmacy		Mar-14			Mar-14
339	CVS Pharmacy #6765	Pharmacy		Apr-14			Apr-14
340	CVS Pharmacy #6858	Pharmacy		Mar-14			Mar-14
341	CVS Pharmacy #7139	Pharmacy		Mar-14			Mar-14
342	CVS Pharmacy #7656	Pharmacy		Apr-14			Apr-14
343	CVS Pharmacy #7911	Pharmacy		Mar-14			Mar-14
344	CVS Pharmacy #7952	Pharmacy		May-14			May-14
345	CVS Pharmacy #8281	Pharmacy		Mar-14			Mar-14
346	Cyriac and Mundra MD PA	Ambulatory	Nov-13	Mar-14	Mar-14		Mar-14
347	Daljeet Singh Sidhu, MD	Pharmacy		Jan-14			Jan-14
348	Darlington Pharmacy	Pharmacy		Jan-14			Jan-14
349	Darmon Medical Services	Ambulatory		Apr-14			Apr-14
350	Darryl M. Coleman, M.D.	Ambulatory		Apr-14			Apr-14
351	David B. Harding, M.D.	Ambulatory	Feb-14	Mar-14			Mar-14
352	David R. McDuff, M.D.	Ambulatory		Feb-14			Feb-14
353	Dawn A. Broderick, M.D.	Ambulatory	Oct-13	Apr-14	Apr-14		Apr-14
354	DECALO Medical Group	Ambulatory		Mar-14			Mar-14
355	Deep Creek Pharmacy	Pharmacy		Sep-13			Nov-13
356	Deepak Seth , MD	Ambulatory	Jun-13				
357	Delmarva Pain Associates	Ambulatory		Feb-14			Feb-14
358	Delmarva Pharmacy	Pharmacy		Jan-14			Jan-14
359	Demmy's Pharmacy LLC	Pharmacy		Mar-14			Mar-14
360	Dennis Dey, MD	Ambulatory		Apr-14			Apr-14
361	Denton Medical Center	FQHC	Dec-13	Dec-13	Dec-13		
362	Desai & Holmes, MD, LLC	Ambulatory	Feb-13	Feb-13	Feb-13		Nov-13
363	Desai Medical Center	Ambulatory	Feb-14	May-14	May-14		
364	Devlin Manor	Long Term Care	Mar-11				
365	DHMH - Office of Health Services	Government Agency	Dec-12			Feb-13	
366	Digestive Disease Associates	Ambulatory	Feb-12	Dec-12			
367	Dimensions Health	Health System	Jul-11	May-14			May-14
368	Divine Internal Medicine LLC	Ambulatory		Apr-14			Apr-14
369	Dobin and Hoeck Internal Medicine	Ambulatory	Jul-12	Jul-12	Jul-12		Jan-14
370	Doctors Community Hospital	Hospital	Oct-11	Apr-13	Apr-13	Jun-13	Nov-13
371	Doctor's Express	Ambulatory		Apr-14			Apr-14
372	Doctors Express Pikesville	Ambulatory	Mar-14				
373	Doctors Regional Cancer Center	Ambulatory	Sep-12	Sep-12	Sep-12		
374	Dolph Druckman MD	Ambulatory		Apr-14			Apr-14
375	Donald Bousel, MD	Ambulatory	Jan-13	Apr-14	Apr-14		Apr-14
376	Douglas W. Heinrichs MD and Associates	Ambulatory		Jan-14			Jan-14
377	Downtown Baltimore Family Care	Ambulatory	Oct-13	Feb-13	Oct-13		Nov-13
378	Dr. David A Schwartz	Ambulatory	Jan-13	Jan-13	Jan-13		Nov-13
379	Dr. David Gar-El MD	Ambulatory	Apr-14	Apr-14	Apr-14		Apr-14

CRISP Portal, ENS & PDMP Adoption by Facility

Count	Organization	Type	Portal Participation Agreement	Training*	Portal Live*	ENS Live*	PDMP Access
380	Dr. Gary L Gay & Associates, LLC	Ambulatory		Mar-14			May-14
381	Dr. Jhansi R. Ganesan, MD	Ambulatory	Apr-13	Apr-13	Apr-13		Nov-13
382	Dr. Kim Jones-Fearing	Ambulatory		May-14			May-14
383	Dr. Robert Welik	Ambulatory	Jul-11				
384	Dr. Robin Bissell	Ambulatory	Sep-13	Oct-13	Oct-13		Nov-13
385	Dr. Sagar	Ambulatory	May-14				
386	Dr. Vinu Ganti	Ambulatory	Jun-13	Sep-13	Oct-13		Nov-13
387	Dragos Popescu, MD	Ambulatory	Dec-12	Dec-12	Dec-12		Nov-13
388	Drs Vaywala & Ahn P.A.	Ambulatory		May-14			May-14
389	Drs. Edwards & Stephens, LLC	Ambulatory		Mar-14			Mar-14
390	Drs. Gehris, Jordan, Day and Associates, LLC	Ambulatory	Oct-12	Oct-12	Oct-12		
391	Drs. Schreiber and Kelsey	Ambulatory	May-13	Feb-14	Mar-14		Mar-14
392	Drs. Shanahan and Ferguson	Ambulatory	May-13	Jun-13	Jun-13		May-14
393	Drug City Pharmacy	Pharmacy		Jan-14			Jan-14
394	Drug Store Pharmacy & Surgicals	Pharmacy		May-14			May-14
395	Dulaney Valley Healthmart Pharmacy	Pharmacy		Apr-14			Apr-14
396	Dundalk Pediatric Associates, P.A.	Ambulatory	Apr-13	Apr-13	Apr-13		Nov-13
397	Dynamic Care Pharmacy	Pharmacy		May-14			May-14
398	E. Pasmanik MD, LLC	Ambulatory	Feb-14	Feb-14			Feb-14
399	Eastern Avenue Health Solutions	Long Term Care	Nov-13	Dec-13	Mar-14		
400	Eastern Shore Medical Center	Ambulatory		Apr-14			Apr-14
401	Eastern Shore Pediatrics LLC	Ambulatory	May-13	Oct-13	Oct-13		Nov-13
402	Eastern Shore Primary Care	Ambulatory	Dec-13	Jan-14	Jan-14		Jan-14
403	Edge Medical Care PC	Ambulatory	Jun-13	Sep-13	Sep-13		Nov-13
404	Edward McCready Memorial Hospital	Hospital	Aug-11	Feb-14	Feb-14		Feb-14
405	Egle Nursing and Rehabilitation Center	Long Term Care	May-13	Jul-13	Jul-13	Jun-13	
406	Elkton Friendly Pharmacy	Pharmacy		Apr-14			Apr-14
407	Elkton Treatment Center	Ambulatory		Mar-14			Mar-14
408	Ellicott City Pediatric Associates	Ambulatory	Aug-13	Aug-13	Oct-13		
409	Ellicott City Primary Care Physicians, PA	Ambulatory		May-14			May-14
410	Emmitsburg Osteopathic Primary Care Center	Ambulatory	Nov-11	Nov-11	Nov-11		
411	Endoscopic Microsurgery Associates	Ambulatory	Oct-13				
412	Erickson Living	Long Term Care	Mar-12	Mar-12			
413	Evergreen Health Care	Ambulatory	Nov-13	Dec-13	Apr-13	Mar-14	Dec-13
414	Express Care Urgent Care Center	Ambulatory		Apr-14			Apr-14
415	F. Caroline Define, MD	Ambulatory		Feb-14			Feb-14
416	Fairwood Spine and Pain Center	Ambulatory	Jun-13	Mar-14	Mar-14		
417	Falls Medical Specialists	Ambulatory	Sep-13	Sep-13	Oct-13		Mar-14
418	Fallston Pharmacy	Pharmacy		May-14			May-14
419	Family Care Associates	Ambulatory		Jan-14			Jan-14
420	Family Care of Easton	Ambulatory	Jul-12	Jul-12	Jul-12		
421	Family Health Center	Ambulatory	MedStar	Nov-11	Nov-11	Sep-13	Nov-13
422	Family Health Centers of Baltimore	FQHC	Oct-13				
423	Family Healthcare of Germantown	Ambulatory	Jan-12	Jan-12	Jan-12	Mar-13	Nov-13
424	Family Medical Center	Ambulatory		Feb-14			Feb-14
425	Family Meds Inc	Pharmacy		Jan-14			Jan-14
426	Family Services	Ambulatory	Jun-12	Jun-12	Jun-12	Feb-14	Nov-13
427	Farragut Avenue Internal Medicine	Ambulatory	Nov-11	Nov-11	Nov-11		
428	Fassett Magee Health Center	FQHC	Dec-13	Dec-13	Dec-13		
429	Fast Track Urgent Care	Ambulatory	Nov-12	Oct-13	Oct-13		Nov-13
430	Federalsburg Medical Center	FQHC	Dec-13	Dec-13	Dec-13		
431	Feldmans Pharmacy at Chartwell	Pharmacy		May-14			May-14
432	Femi Care Center	Ambulatory	Apr-14				
433	Fink's Pharmacy	Pharmacy		Feb-14			Feb-14
434	Finksburg Pharmacy	Pharmacy		Feb-14			Feb-14
435	Five Star Physician Services, LLC	Ambulatory	May-13	Aug-13	Sep-13		Nov-13
436	Foer Medical Arts Pharmacy-Rockledge Drive	Pharmacy		Jan-14			Jan-14

CRISP Portal, ENS & PDMP Adoption by Facility

Count	Organization	Type	Portal Participation Agreement	Training*	Portal Live*	ENS Live*	PDMP Access
437	For All Seasons, Inc	Ambulatory		Apr-14			Apr-14
438	Forest Haven Nursing Home	Long Term Care	Sep-13	Oct-13	Oct-13		
439	Fort Washington Medical Center	Hospital	Sep-11	Aug-12	Sep-12		Nov-13
440	Foster Medical Care, LLC	Ambulatory		Jan-14			Jan-14
441	Foundation Schools	Ambulatory		Apr-14			Apr-14
442	Frederick County Health Department	Government Agency	Dec-12	Jan-14	Jan-14		Jan-14
443	Frederick Gastroenterology Associates	Ambulatory	Jul-13	Jul-13	Aug-13		
444	Frederick Internal Medicine	Ambulatory		May-14			May-14
445	Frederick Memorial Hospital	Hospital	Jun-11	Jul-12	Jul-12		Jan-14
446	Frederick Primary Care Associates	Ambulatory	Sep-13	Jan-14	Jan-14	Nov-13	Jan-14
447	Frederick Spine and Rehabilitation Center	Ambulatory	Feb-14	Jan-14			Feb-14
448	FutureCare Canton Harbor	Long Term Care	FutureCare Health and Management Corporation				
449	FutureCare Charles Village	Long Term Care	FutureCare Health and Management Corporation				
450	FutureCare Cherrywood	Long Term Care	FutureCare Health and Management Corporation				
451	FutureCare Chesapeake	Long Term Care	FutureCare Health and Management Corporation				
452	FutureCare Cold Spring	Long Term Care	FutureCare Health and Management Corporation				
453	FutureCare Health and Management Corporation	Long Term Care	Feb-14	Mar-14	Mar-14	May-14	Mar-14
454	FutureCare Homewood	Long Term Care	FutureCare Health and Management Corporation				
455	FutureCare Irvington	Long Term Care	FutureCare Health and Management Corporation				
456	FutureCare Lochearn	Long Term Care	FutureCare Health and Management Corporation				
457	FutureCare North Point	Long Term Care	FutureCare Health and Management Corporation	May-14	May-14		May-14
458	FutureCare Old Court	Long Term Care	FutureCare Health and Management Corporation				
459	FutureCare Pineview	Long Term Care	FutureCare Health and Management Corporation				
460	FutureCare Sandtown	Long Term Care	FutureCare Health and Management Corporation				
461	Garrett County Health Department	Government Agency		May-14			May-14
462	Garrett County Memorial Hospital	Hospital	Apr-11	Jan-14	Jan-14		Jan-14
463	Garrett Medical Group, P.A.	Ambulatory	Jun-12				
464	Garrett Surgical Group	Ambulatory	Jul-12				
465	Gateway Medical Center	Ambulatory		Apr-14			Apr-14
466	Geetha Subramaniam	Ambulatory		Mar-14			Mar-14

CRISP Portal, ENS & PDMP Adoption by Facility

Count	Organization	Type	Portal Participation Agreement	Training*	Portal Live*	ENS Live*	PDMP Access
467	Genesis Cromwell Facility	Long Term Care	Genesis Healthcare	Feb-14	Feb-14		Feb-14
468	Genesis Franklin Woods	Long Term Care	Genesis Healthcare				
469	Genesis Healthcare	Long Term Care	Oct-13	Dec-13	Dec-13		Dec-13
470	Genesis Heritage Center	Long Term Care	Genesis Healthcare	Feb-14	Feb-14		
471	George C James, MD	Ambulatory		Apr-14			Apr-14
472	Georges Creek Pharmacy Inc	Pharmacy		Jan-14			Jan-14
473	Gerald Family Care	Ambulatory	Sep-11	Apr-13	Apr-13	Jan-13	
474	Giant Eagle Pharmacy #1841	Pharmacy		Jan-14			Jan-14
475	Giant Eagle Pharmacy #1842	Pharmacy		Apr-14			Apr-14
476	Giant Pharmacy #111	Pharmacy		May-14			May-14
477	Giant Pharmacy #117	Pharmacy		Apr-14			Apr-14
478	Giant Pharmacy #129	Pharmacy		Mar-14			Mar-14
479	Giant Pharmacy #131	Pharmacy		Mar-14			Mar-14
480	Giant Pharmacy #146	Pharmacy		Feb-14			Feb-14
481	Giant Pharmacy #303	Pharmacy		Feb-14			Feb-14
482	Giant Pharmacy #304	Pharmacy		Mar-14			Mar-14
483	Giant Pharmacy #322	Pharmacy		Mar-14			Mar-14
484	Giant Pharmacy #325	Pharmacy		Feb-14			Feb-14
485	Giant Pharmacy #339	Pharmacy		Apr-14			Apr-14
486	Giant Pharmacy #344	Pharmacy		Apr-14			Apr-14
487	Giant Pharmacy #349	Pharmacy		May-14			May-14
488	Giant Pharmacy #358	Pharmacy		Mar-14			Mar-14
489	Glade Valley Family Practice	Ambulatory		Jan-14			Jan-14
490	Glenwood Life Counseling Center	Ambulatory		Jan-14			Jan-14
491	Glick Psychiatry	Ambulatory		Feb-14			Feb-14
492	Go-Getters	Ambulatory	Aug-13	Aug-13	Sep-13	Nov-13	
493	Goldsboro Medical Center	FQHC	Dec-13	Dec-13	Dec-13		
494	Gordys Riverside Pharmacy Inc	Pharmacy		Apr-14			Apr-14
495	Got A Doc Walk In Medical Centers	Ambulatory		May-14			May-14
496	Greater Baltimore Medical Associates	Ambulatory	Jun-12	Nov-12	Nov-12	Aug-12	Jan-14
497	Greater Baltimore Medical Center	Hospital	Jan-10	Jun-12	Jun-12		Nov-13
498	Greater Baltimore Medical Center at Perry Hall	Ambulatory		Apr-14			Apr-14
499	Green Ridge Behavioral Health	Ambulatory		Jan-14			Jan-14
500	Green Spring Internal Medicine, LLC	Ambulatory	Feb-12	Feb-12	Feb-12	Apr-13	Nov-13
501	Gregg's Pharmacy Inc	Pharmacy		Apr-14			Apr-14
502	Gregory Pokrywka MD	Ambulatory		Feb-14			Feb-14
503	GS Surgical Services, LLC	Ambulatory	Jul-12	Mar-13	Mar-13		Nov-13
504	Gul G. Chablani, M.D.	Ambulatory	Jan-14				
505	Halethorpe Pharmacy	Pharmacy		May-14			May-14
506	Happy Harry's #11037	Pharmacy		Mar-14			Mar-14
507	Happy Harry's #11043	Pharmacy		Mar-14			Mar-14
508	Happy Harry's #11054	Pharmacy		Apr-14			Mar-14
509	Happy Harry's #11064	Pharmacy		Apr-14			Apr-14
510	Harford Memorial Hospital	Hospital	Jan-12	Aug-12	Aug-12		Nov-13
511	Harford Pharmacy Inc	Pharmacy		Feb-14			Feb-14
512	Harford-Belair Community Mental Health	Ambulatory	Sep-13				
513	Harriet Lane Clinic	Ambulatory	Johns Hopkins Hospital	Jan-14	Jan-14		Jan-14
514	Harris Teeter #392	Pharmacy		May-14			May-14
515	Hayes Medical Center, P.A.	Ambulatory		May-14			May-14
516	Health Care for the Homeless MD	FQHC	May-13	May-13	May-13	Mar-14	Nov-13
517	Health Matters Urgent Care	Ambulatory		Apr-14			Apr-14
518	Health@Work	Ambulatory		May-14			May-14
519	Healthy Steps	Ambulatory	Jan-12	Jan-12	Jan-12		
520	Hebrew Home of Greater Washington	Long Term Care	Apr-12	Apr-12	May-12		
521	Hereford Pharmacy Inc	Pharmacy		Mar-14			Mar-14

CRISP Portal, ENS & PDMP Adoption by Facility

Count	Organization	Type	Portal Participation Agreement	Training*	Portal Live*	ENS Live*	PDMP Access
522	Hillendale Pharmacy	Pharmacy		Jan-14			Jan-14
523	Hollywood Medical Center	Ambulatory	Feb-14	Feb-14	Apr-14		Apr-14
524	Hollywood Pharmacy	Pharmacy		Mar-14			Mar-14
525	Holy Cross - Aspen Hill Health Center	Ambulatory	Jul-12	Jul-12	Aug-12	May-14	Nov-13
526	Holy Cross - Silver Spring Health Center	Ambulatory	Nov-11	Nov-12	Nov-12		
527	Holy Cross Employee Health	Ambulatory	Holy Cross Hospital	Oct-11	Oct-11		
528	Holy Cross Health Center	Ambulatory	Nov-11	Nov-11	Nov-11		Nov-13
529	Holy Cross Home Health	Ambulatory	Oct-11				
530	Holy Cross Hospital	Hospital	Oct-11	Dec-11	Dec-11		Nov-13
531	HomeCare Maryland, LLC	Long Term Care	LifeBridge Health	May-14	May-14		
532	Hope Health Systems	Ambulatory	Nov-12	Oct-13	Oct-13		
533	Howard Cohen MD	Ambulatory		May-14			May-14
534	Howard County General Hospital	Hospital	Aug-11	Mar-12	Mar-12		Nov-13
535	Howard County Health Department	Government Agency		Mar-14			Mar-14
536	Humanim	Ambulatory	Jul-13	Sep-13	Sep-13	Aug-13	
537	Independent Drug	Pharmacy		May-14			May-14
538	Indian Head Pharmacy	Pharmacy		Feb-14			May-14
539	Ingleside at King's Farm	Long Term Care	May-13	Jun-13	Jun-13	Jun-13	Dec-13
540	Institutes for Behavior Resources	Ambulatory	Sep-13	Sep-13	Sep-13		Nov-13
541	Integrax, LLC	Ambulatory	May-14	May-14			May-14
542	Irfan Saeed, MD	Ambulatory		May-14			May-14
543	Irina A. Skopets, MD, PA	Ambulatory	Sep-13	Sep-13	Oct-13		Nov-13
544	Irv Schindler DDS	Ambulatory		Apr-14			Apr-14
545	Jack D. Blaine, M.D	Ambulatory		Jan-14			Jan-14
546	Jai Medical Center	Ambulatory	Sep-13	Apr-14			Apr-14
547	Janjua Neurology MD PA	Ambulatory	Feb-13	Jan-13	Feb-13		
548	Jarrettsville Family Care	Ambulatory	Sep-12	Sep-12	Sep-12		Mar-14
549	Jarrettsville Pharmacy	Pharmacy		Feb-14			Feb-14
550	Jayantilal K. Patel, M.D.	Ambulatory		May-14			May-14
551	JCHIP Acute	Health System	Johns Hopkins Hospital				
552	JCHIP Community	Ambulatory	Johns Hopkins Hospital	Oct-13	Oct-13	Jul-13	
553	JCHIP KnownCAD	Health System	Johns Hopkins Hospital			Jun-13	
554	Jewish Community Services	Ambulatory	May-14				
555	JHCP Annapolis	Ambulatory	Apr-12	Aug-12	Aug-12		
556	JHCP Bayview	Ambulatory	JHCP Annapolis				
557	JHCP Bowie	Ambulatory	JHCP Annapolis	Aug-12	Aug-12		Nov-13
558	JHCP Canton Crossing	Ambulatory	JHCP Annapolis	Jun-12	Jun-12	Sep-12	
559	JHCP Charles County	Ambulatory	JHCP Annapolis	Aug-12	Aug-12		
560	JHCP Cranberry Station	Ambulatory	JHCP Annapolis				
561	JHCP Downtown Bethesda	Ambulatory	JHCP Annapolis	Jul-12	Jul-12		
562	JHCP East Baltimore	Ambulatory	JHCP Annapolis	Jul-12	Jul-12		Nov-13
563	JHCP Frederick	Ambulatory	JHCP Annapolis	Aug-12	Aug-12		Apr-14
564	JHCP Fulton	Ambulatory	JHCP Annapolis	Jun-13	Oct-12		
565	JHCP Germantown	Ambulatory	JHCP Annapolis	Jul-12	Jul-12		
566	JHCP Glen Burnie	Ambulatory	JHCP Annapolis	Aug-12	Aug-12		Nov-13
567	JHCP Greater Dundalk	Ambulatory	JHCP Annapolis	Jul-12	Aug-12		Nov-13
568	JHCP Green Spring	Ambulatory	JHCP Annapolis	Aug-12	Aug-12		
569	JHCP Hager Park Health Center	Ambulatory	JHCP Annapolis				
570	JHCP Hagerstown	Ambulatory	JHCP Annapolis	May-12	May-12	Sep-12	May-14
571	JHCP Heart Care - Bethesda	Ambulatory	JHCP Annapolis	Oct-13	Oct-13		Nov-13
572	JHCP Heart Care - Rockville	Ambulatory	JHCP Annapolis	Jul-12	Jul-12		Jan-14
573	JHCP Howard County	Ambulatory	JHCP Annapolis	Aug-12	Aug-12		
574	JHCP Kent Island	Ambulatory	JHCP Annapolis	Sep-12	Sep-12		
575	JHCP Laurel	Ambulatory	JHCP Annapolis	Aug-12	Aug-12		Nov-13
576	JHCP Laurel Health Center	Ambulatory	JHCP Annapolis				
577	JHCP Monocacy Valley Health Center	Ambulatory	JHCP Annapolis				

CRISP Portal, ENS & PDMP Adoption by Facility

Count	Organization	Type	Portal Participation Agreement	Training*	Portal Live*	ENS Live*	PDMP Access
578	JHCP Montgomery Grove	Ambulatory	JHCP Annapolis	May-12	May-12	Sep-12	Nov-13
579	JHCP North Bethesda	Ambulatory	JHCP Annapolis	Jul-12	Jul-12		
580	JHCP OBGYN at Columbia	Ambulatory	JHCP Annapolis				
581	JHCP Odenton	Ambulatory	JHCP Annapolis	Aug-12	Aug-12		Apr-14
582	JHCP Water's Edge	Ambulatory	JHCP Annapolis	Jun-12	Jun-12	Sep-12	Nov-13
583	JHCP Westminster	Ambulatory	JHCP Annapolis	Aug-12	Sep-12		Nov-13
584	JHCP White Marsh	Ambulatory	JHCP Annapolis	Aug-12	Aug-12		Nov-13
585	JHCP Wyman Park	Ambulatory	JHCP Annapolis	Jul-12	Jul-12	Sep-12	Nov-13
586	John F Seidel DDS, PA	Ambulatory		May-14			May-14
587	John M. Lee MD PA	Ambulatory	Oct-13	Oct-13	Nov-13		Nov-13
588	John Whittaker, LLC	Ambulatory		Mar-14			Mar-14
589	Johns Hopkins Bayview Medical Center	Hospital	Aug-11	Apr-12	Apr-12	Mar-14	Nov-13
590	Johns Hopkins Community Physicians	Ambulatory	Apr-12	Apr-12	Apr-12	Sep-12	Feb-14
591	Johns Hopkins HealthCare	Payor	Nov-12	May-13			
592	Johns Hopkins Healthcare Priority Partners	Payor	Nov-12			Jan-13	
593	Johns Hopkins Home Care	Long Term Care		Jan-14			Jan-14
594	Johns Hopkins Hospital	Hospital	Aug-11	Jul-12	Jul-12		Nov-13
595	Johns Hopkins Outpatient Pharmacy at the Arcade	Pharmacy		Jan-14			Jan-14
596	Johnson Family Pharmacy	Pharmacy		Mar-14			Mar-14
597	Johnston Family Medicine	Ambulatory	May-13	Mar-13	Jul-13		Nov-13
598	Jon E simon MD LLC	Ambulatory	May-14	May-14			May-14
599	JP Clarke and Associates,LLC	Ambulatory		Apr-14			Apr-14
600	Julius Boateng, M.D.	Ambulatory	Feb-14				
601	Kaiser Permanente	Ambulatory	Mar-14				
602	Kaiser Permanente - Mid Atlantic Permanente Medical Group	Ambulatory	Kaiser Permanente	Apr-14			Apr-14
603	Kaiser Permanente Annapolis Pharmacy	Pharmacy	Kaiser Permanente	Apr-14			Apr-14
604	Kaiser Permanente Camp Springs Pharmacy	Pharmacy	Kaiser Permanente	Apr-14			Apr-14
605	Kaiser Permanente Columbia Gateway	Ambulatory	Kaiser Permanente	Apr-14			Apr-14
606	Kaiser Permanente Gaithersburg Infusion	Pharmacy	Kaiser Permanente	Apr-14			Apr-14
607	Kaiser Permanente Gaithersburg Medical Center	Ambulatory	Kaiser Permanente	Apr-14			Apr-14
608	Kaiser Permanente Gaithersburg Pharmacy	Pharmacy	Kaiser Permanente	Apr-14			Feb-14
609	Kaiser Permanente Hopkins Plaza	Pharmacy	Kaiser Permanente	May-14			May-14
610	Kaiser Permanente Infusion Pharmacy	Pharmacy	Kaiser Permanente	Apr-14			Apr-14
611	Kaiser Permanente Kensington Pharmacy	Pharmacy	Kaiser Permanente	Jan-14			Jan-14
612	Kaiser Permanente Largo	Pharmacy	Kaiser Permanente	Apr-14			Apr-14
613	Kaiser Permanente Marlow Heights	Pharmacy	Kaiser Permanente	Apr-14			Apr-14
614	Kaiser Permanente Medical Center	Ambulatory	Kaiser Permanente	Apr-14			Apr-14
615	Kaiser Permanente Pharmacy	Pharmacy	Kaiser Permanente	Feb-14			Mar-14
616	Kaiser Permanente Severna Park Pharmacy	Pharmacy	Kaiser Permanente	Feb-14			Feb-14
617	Kaiser Permanente Shady Grove	Pharmacy	Kaiser Permanente	Apr-14			Apr-14
618	Kaiser Permanente South Baltimore Co Pharmacy	Pharmacy	Kaiser Permanente	Jan-14			Jan-14
619	Kaiser Permanente Towson Medical Center	Ambulatory	Kaiser Permanente	Apr-14			Apr-14
620	Kaiser Permanente Towson Pharmacy	Pharmacy	Kaiser Permanente	Apr-14			Apr-14
621	Kaiser Permanente White Marsh Medical Center	Ambulatory	Kaiser Permanente	Mar-14			Mar-14

CRISP Portal, ENS & PDMP Adoption by Facility

Count	Organization	Type	Portal Participation Agreement	Training*	Portal Live*	ENS Live*	PDMP Access
622	Kaiser Permanente Woodlawn Pharmacy	Pharmacy	Kaiser Permanente	Apr-14			Apr-14
623	Karl Spector, MD & Associates	Ambulatory		Feb-14			Feb-14
624	Key Point Health	Ambulatory	Apr-14	Apr-14			Apr-14
625	Kidney Health Center of Maryland, P.A.	Ambulatory	Dec-13	Apr-14	Apr-14		Apr-14
626	Kingdom Medicine P.A.	Ambulatory	Mar-13	Mar-13	Mar-13		Nov-13
627	Kingsway Care Pharmacy	Pharmacy		May-14			May-14
628	Kmart Pharmacy	Pharmacy		Feb-14			Feb-14
629	Kmart Pharmacy #3146	Pharmacy		Feb-14			Feb-14
630	Kmart Pharmacy #3167	Pharmacy		May-14			May-14
631	Kmart Pharmacy #3172	Pharmacy		Mar-14			Mar-14
632	Kmart Pharmacy #3237	Pharmacy		Apr-14			Apr-14
633	Kmart Pharmacy #3277	Pharmacy		Mar-14			Mar-14
634	Kmart Pharmacy #3796	Pharmacy		Mar-14			Mar-14
635	Kmart Pharmacy #7673	Pharmacy		Mar-14			Mar-14
636	Kmart Pharmacy #9524	Pharmacy		Jan-14			Jan-14
637	Kolmac Clinic	Ambulatory		Apr-14			Apr-14
638	Krishan K. Singal, MD	Ambulatory	Dec-13				
639	Kure Pain Management	Ambulatory		Jan-14			Jan-14
640	Labcorp	Laboratory	Sep-12				
641	Lantern Therapeutic Services Inc	Ambulatory		May-14			May-14
642	Laurel Medical Associates	Ambulatory	Jul-13				
643	Laurel Regional Hospital	Hospital	Jan-12	Jul-13	Sep-13		Nov-13
644	Lavale Pharmacy	Pharmacy		Feb-14			Feb-14
645	Leisure World	Long Term Care	Jul-11	Nov-11	Dec-11		
646	Levindale	Long Term Care	LifeBridge Health				
647	LifeBridge Health	Health System	Oct-10	Sep-12	Sep-12		May-14
648	LifeBridge Health - Sinai Ambulatory Practice	Ambulatory	LifeBridge Health			Jun-13	
649	Lifestream Health	Ambulatory		Feb-14			Feb-14
650	Lisa R. Halpern MD	Ambulatory		Mar-14			Mar-14
651	Lois A. Narr, D.O.	Ambulatory	Sep-13	Sep-13			
652	Lois M. Conn, M.D.	Ambulatory		Apr-14			Apr-14
653	Long View Nursing Home	Long Term Care	Mar-12	Apr-12			
654	Lorien Bel Air	Long Term Care	Lorien Health	May-12	May-12		
655	Lorien Columbia	Long Term Care	Lorien Health				
656	Lorien Encore at Turf Valley	Long Term Care	Lorien Health				
657	Lorien Health	Long Term Care	Jan-12				
658	Lorien Mays Chapel	Long Term Care	Lorien Health				
659	Lorien Mt. Airy	Long Term Care	Lorien Health				
660	Lorien Riverside	Long Term Care	Lorien Health				
661	Lorien Taneytown	Long Term Care	Lorien Health				
662	Lower Shore ACO	Ambulatory	Aug-13				
663	Lutherville Personal Physicians	Ambulatory	Mercy Medical Center	May-14		May-14	May-14
664	Lynch Primary Care	Ambulatory	Feb-14			Apr-14	
665	MacPhail Pharmacy	Pharmacy		Jan-14			Jan-14
666	Magnolia Management	Long Term Care	Mar-11				
667	Mahendra S Khera, M.D.	Ambulatory		May-14			May-14
668	Man Alive	Ambulatory	Sep-13	Dec-13	Dec-13		Dec-13
669	Manchester Medical Group, LLC	Ambulatory	Mar-13	Mar-13	Mar-13		Nov-13
670	Manchester Pharmacy	Pharmacy		Apr-14			Apr-14
671	Maple Shade Youth & Family Services	Ambulatory	Oct-13				
672	Marc D Sokolow MD	Ambulatory	May-14				
673	Marie A. Dobyns, MD, PA	Ambulatory	Jul-13	Jul-13	Sep-13	Aug-13	Nov-13
674	Marion Pharmacy	Pharmacy		May-14			May-14
675	Martin's Food Market #6003	Pharmacy		Mar-14			Mar-14
676	Martins Food Markets	Pharmacy		Feb-14			Feb-14
677	Martins Pharmacy #6104	Pharmacy		Feb-14			Feb-14
678	Martins Pharmacy #6275	Pharmacy		Mar-14			Mar-14
679	Maryann D. Moore, MD, PA	Ambulatory		May-14			May-14

CRISP Portal, ENS & PDMP Adoption by Facility

Count	Organization	Type	Portal Participation Agreement	Training*	Portal Live*	ENS Live*	PDMP Access
680	Maryland Accountable Care Organization of the Eastern Shore	Ambulatory	Aug-13				
681	Maryland Accountable Care Organization of Western Maryland	Ambulatory	Aug-13				
682	Maryland Addiction Recovery Center	Ambulatory		Apr-14			Apr-14
683	Maryland Department of Health and Mental Hygiene	Government Agency	Dec-12				
684	Maryland Department of Public Safety and Correctional Services	Government Agency	Dec-12				
685	Maryland Kidney Group, PA	Ambulatory	Sep-12	Jul-13	Jul-13		Nov-13
686	Maryland Oncology And Hematology	Ambulatory	Jan-13	Jan-13	Jan-13		Nov-13
687	Maryland Open MRI	Radiology	Nov-12				
688	Maryland Pain & Spine Center, LLC	Ambulatory		Jan-14			Jan-14
689	Maryland Pain Specialists	Ambulatory		Jan-14			Jan-14
690	Maryland Primary Care Physicians	Ambulatory	Apr-13	Apr-13	Apr-13		Jan-14
691	Maryland Rehab and Pain	Pharmacy		Feb-14			Feb-14
692	Maryland Spine and Sports Medicine, P.C.	Ambulatory		Feb-14			Feb-14
693	Massumi Associates	Ambulatory		Apr-14			Apr-14
694	Mazique Pediatrics, PC	Ambulatory	Jan-13	Jan-13	Jan-13		
695	McKays Pharmacy	Pharmacy		Feb-14			Feb-14
696	MD Laser Medicine & Surgery	Ambulatory	Aug-13				
697	Med One Pharmacy - Boonsboro	Pharmacy		Apr-14			Apr-14
698	Med One Pharmacy - Middletown	Pharmacy		Mar-14			Mar-14
699	Med One Pharmacy - Thurmont	Pharmacy		Apr-14			Apr-14
700	Med One Pharmacy - Woodbine	Pharmacy		Feb-14			Feb-14
701	Medpeds	Ambulatory	May-12	Jul-12	Jul-12	Dec-12	Mar-14
702	Medpsych Health Services	Ambulatory		Apr-14			Apr-14
703	Medstar	Health System	Jun-11				
704	MedStar Family Choice	FQHC	MedStar			Dec-13	
705	Medstar Franklin Square Medical Center	Hospital	MedStar	Jul-12	Jul-12	Jan-14	Nov-13
706	Medstar Good Samaritan Hospital	Hospital	MedStar	Jun-12	Jun-12		Nov-13
707	Medstar Harbor Hospital	Hospital	MedStar	Mar-12	Mar-12	Aug-12	Nov-13
708	MedStar Medical Group	Ambulatory	MedStar	Feb-13	Feb-13		Nov-13
709	Medstar Montgomery Medical Center	Hospital	Jun-12	Dec-11	Dec-11		Nov-13
710	Medstar Pharmacy Store #3	Pharmacy		Jan-14			Jan-14
711	Medstar Pharmacy Store #4	Pharmacy		Jan-14			Jan-14
712	Medstar Pharmacy Store #6	Pharmacy		Jan-14			Jan-14
713	Medstar Pharmacy Store #7	Pharmacy		Jan-14			Jan-14
714	MedStar Promptcare	Ambulatory	MedStar				
715	Medstar Southern Maryland Hospital Center	Hospital	Aug-11	Feb-13	Feb-13		Apr-14
716	Medstar St. Mary's Hospital	Hospital	MedStar	May-13	Jun-13		
717	Medstar Union Memorial Hospital	Hospital	MedStar	May-12	May-12		Nov-13
718	Melvin Weissburg, D.M.D.	Ambulatory		May-14			May-14
719	Memorial Care Center	Ambulatory		Jan-14			Jan-14
720	Menocal Medical Services PA	Ambulatory		Feb-14			Feb-14
721	Mercy Medical Center	Hospital	Sep-11	Aug-12	Aug-12		Nov-13
722	Meridian Primary Care	Ambulatory	Mar-14	Mar-14	Mar-14		Mar-14
723	Meritus Medical Center	Hospital	Nov-11	Sep-12	Sep-12		Nov-13
724	Metro Renal Associates	Ambulatory		Apr-14			Apr-14
725	Metropolitan Medical Specialists	Ambulatory	Mar-14				
726	Mian Family Medicine, LLC	Ambulatory	Mar-11	Dec-11	Dec-11		Nov-13
727	Michael April & Associates	Ambulatory		Jan-14			Jan-14
728	Michael Crouch, M.D. , P.A.	Ambulatory		Mar-14			Mar-14
729	Michael Gray, MD, PC	Ambulatory		Apr-14			Apr-14
730	Michael Randolph M.D., PC	Ambulatory	Oct-12	Oct-13	Oct-13		Nov-13
731	Michael Sullivan	Ambulatory		May-14			May-14
732	Mid Atlantic Neurosurgical Associates	Ambulatory		Apr-14			Apr-14
733	Mid Atlantic Pain Institute	Ambulatory		Jan-14			Jan-14

CRISP Portal, ENS & PDMP Adoption by Facility

Count	Organization	Type	Portal Participation Agreement	Training*	Portal Live*	ENS Live*	PDMP Access
734	Mid-Atlantic Berlin Nursing and Rehabilitation Center	Long Term Care	May-13	Aug-13	Sep-13	Sep-13	
735	Mid-Atlantic Chapel Hill Nursing & Rehab Center	Long Term Care	Mar-12				
736	Mid-Atlantic Fairfield Nursing and Rehabilitation	Long Term Care	Mar-12				
737	Mid-Atlantic Nephrology Associates, P.A.	Ambulatory	Sep-13	Sep-13	Oct-13		Nov-13
738	Mid-Atlantic Oakland Nursing & Rehab Center	Long Term Care	Mar-12				
739	Mid-Atlantic Pain Medicine Center	Ambulatory	Aug-13	Sep-13	Sep-13		Nov-13
740	Mid-Atlantic Villa Rosa Nursing Home	Long Term Care	Mar-12				
741	Middletown Valley Family Medicine, P.A.	Ambulatory	Oct-13	Oct-13	Oct-13		Nov-13
742	Mikhail Gendel Family Practice	Ambulatory		Jan-14			Jan-14
743	Mitchell Gittelman, DO,PA	Ambulatory	Dec-13	Jan-14	Jan-14		Jan-14
744	Mody & Miller MD PA	Ambulatory	Jan-13				
745	Monocacy Emergency Physicians	Ambulatory		Jan-14			Mar-14
746	Montague Blundon, M.D.	Ambulatory		Jan-14			Jan-14
747	Montgomery County Medication Assisted Treatment Program	Ambulatory		Jan-14			Mar-14
748	Montgomery Medical Associates P.C.	Ambulatory	May-13	Jun-13	Nov-13	Nov-13	Nov-13
749	Montgomery Oncology Care and Hematology	Ambulatory		Jan-14			Jan-14
750	Montgomery Otolaryngology Consultants	Ambulatory	May-14				
751	Montgomery Recovery Services	Ambulatory	Sep-13	Oct-13	Sep-13	Nov-13	
752	Montgomery Village Pain and Rehabilitation Center	Ambulatory		Jan-14			Jan-14
753	Mosaic Community Services	Ambulatory	Jan-13	Jan-13	Jan-13	Dec-13	Nov-13
754	Motamedi & Associates Internal Medicine	Ambulatory		May-14			May-14
755	Mountain Laurel Medical Center	FQHC	Apr-12	Jun-12	Jun-12		
756	Mountain Manor Treatment Center	Ambulatory		Mar-14			Mar-14
757	MPCP Annapolis	Ambulatory	Maryland Primary Care Physicians				
758	MPCP Arnold	Ambulatory	Maryland Primary Care Physicians	Apr-14	Apr-14		Apr-14
759	MPCP Columbia	Ambulatory	Maryland Primary Care Physicians	Feb-13	Sep-13		Nov-13
760	MPCP Pasadena	Ambulatory	Maryland Primary Care Physicians	May-14	May-14		May-14
761	MS SHARIFF, MD PA	Ambulatory		May-14			May-14
762	Mt Vernon Pharmacy	Pharmacy		Feb-14			Feb-14
763	Mt. Washington Pediatric Hospital	Hospital	Jun-11	Apr-14	Apr-14		Apr-14
764	Multi-specialty Healthcare	Ambulatory		Apr-14			Apr-14
765	Mulvey Family Practice	Ambulatory	May-14				
766	Mulveys Preston Pharmacy	Pharmacy		May-14			May-14
767	N.B. Vellanki, MD	Ambulatory	Apr-13				
768	National Spine and Pain Centers	Ambulatory		Dec-13			Jan-14
769	Natural Family Wellness	Ambulatory	May-12	Apr-12	Apr-12	Dec-13	
770	Naturecare Pharmacy	Pharmacy		Mar-14			Mar-14
771	Neighborcare - Riderwood	Pharmacy		Jan-14			Jan-14
772	Neighborcare Howard Co General Hosp	Pharmacy		Sep-13			Nov-13
773	Neighborcare Pharmacy	Pharmacy		Jan-14			Jan-14
774	Neighborhood Wellness	Ambulatory		Apr-14			Apr-14
775	Neil E. Lattin, MD LLC	Ambulatory	Aug-12	Aug-12	Aug-12		Nov-13
776	Nephrology Associates PA	Ambulatory	Mar-13	Apr-13	Apr-13		Feb-14
777	Nephrology Center of Maryland	Ambulatory	Jan-12				
778	Nicholette Martin-Davis,MD LLC	Ambulatory		Apr-14			Apr-14

CRISP Portal, ENS & PDMP Adoption by Facility

Count	Organization	Type	Portal Participation Agreement	Training*	Portal Live*	ENS Live*	PDMP Access
779	NMS Healthcare Annapolis	Long Term Care	NMS Healthcare Facilities	May-13	May-13		
780	NMS Healthcare Facilities	Long Term Care	May-13			Jul-13	
781	NMS Healthcare Hagerstown	Long Term Care	NMS Healthcare Facilities	May-13	May-13		
782	NMS Healthcare Hyattsville	Long Term Care	NMS Healthcare Facilities	May-13	May-13		Nov-13
783	NMS Silver Spring	Long Term Care	NMS Healthcare Facilities				
784	Northgate Pharmacy Inc	Pharmacy		Feb-14			Mar-14
785	Northwest Hospital Center	Hospital	Jan-12	Sep-12	Sep-12		Nov-13
786	Nova Interventional Pain Management	Ambulatory		Feb-14			Feb-14
787	Oakcrest	Long Term Care	Sep-11				
788	Olney Professional Pharmacy Inc	Pharmacy		Jan-14			Jan-14
789	Omni Medical Center	Ambulatory	Nov-12	Oct-12	Nov-12		
790	Omnicare of Salisbury	Pharmacy		Oct-13			Nov-13
791	Optimum Health Systems Inc.	Ambulatory	Dec-13	Dec-13	Dec-13		Dec-13
792	Orchard Pharmacy	Pharmacy		Mar-14			Mar-14
793	OrthoBethesda	Ambulatory	Feb-13				
794	OrthoMaryland	Ambulatory		Mar-14			Mar-14
795	Owensville Primary Care, Inc.	FQHC	Sep-13	Aug-13	Sep-13		Nov-13
796	P.G. Wellness Center	Ambulatory		May-14			May-14
797	Padek Healthcare Pharmacy LLC	Pharmacy		Mar-14			Mar-14
798	Pain Management Institute	Ambulatory		Mar-14			Mar-14
799	Pain Management Specialists	Ambulatory		Jan-14			Jan-14
800	Pain Medicine and Rehab Services	Ambulatory		Feb-14			Feb-14
801	Pain, Spine & Rehab Associates	Ambulatory		Mar-14			Mar-14
802	Paraclete Care	Ambulatory	Apr-14	Apr-14	Apr-14		Apr-14
803	Park Medical Associates	Ambulatory	Dec-13	Dec-13	Jan-14		Jan-14
804	Park Pharmacy Inc	Pharmacy		Feb-14			Feb-14
805	Park West Health System, Inc.	FQHC	Apr-14			May-14	
806	Parkview Medical Group	Ambulatory	Jun-11	Apr-14	Apr-14		Apr-14
807	Parkway Neuroscience and Spine Institute	Ambulatory		Jan-14			Jan-14
808	Pasadena Pharmacy	Pharmacy		May-14			May-14
809	Patient First	Ambulatory		Apr-14			Apr-14
810	Patricia M. Sullivan, MD	Ambulatory	Jan-14	Feb-14			Feb-14
811	Paul Katz, DO	Ambulatory		Feb-14			Feb-14
812	Paul T. Barbera MD, PA	Ambulatory	Jan-14	Jan-14	Jan-14		Jan-14
813	Pediatric & Adolescent Care	Ambulatory	May-14				
814	Pediatric & Adolescent Care of Silver Spring	Ambulatory	Dec-13	Feb-14	Feb-14	Apr-14	Feb-14
815	Pediatric Associates of Montgomery County	Ambulatory	Apr-14	Apr-14			Apr-14
816	Pediatrics At The Harbor	Ambulatory	University of Maryland Medical Center			Jul-13	
817	Pemberton Pharmacy	Pharmacy		May-14			May-14
818	Peninsula Orthopaedic Associates	Ambulatory		Mar-14			Mar-14
819	Peninsula Regional Medical Center	Hospital	Nov-12	May-13	Sep-13		Nov-13
820	Peninsula Regional Medical Group	Ambulatory		Apr-14			Apr-14
821	Peninsula Regional Neurosurgery	Ambulatory		Apr-14			Apr-14
822	People Encouraging People, Inc.	Ambulatory	Apr-13	Jul-13	Jul-13	Jul-13	Nov-13
823	People's Community Health Centers	FQHC	Jan-13	Feb-13	Feb-13	Aug-13	
824	Perkis and Ferenz Family Medicine	Ambulatory	Mar-14	Apr-14	Oct-13		Apr-14
825	Philip Konits MD LLC	Ambulatory	Jan-14	Apr-13	Jan-14		Jan-14
826	Phoenix Health Center	Ambulatory		Jan-14			Jan-14
827	PHS Fort Lincoln Family Medicine	Ambulatory	Nov-13	Feb-14	Feb-14	Feb-14	Feb-14
828	Physical Medicine & Pain Management Associates, P.C.	Ambulatory		Jan-14			Jan-14
829	Physician Associates	Ambulatory		Apr-14			Apr-14
830	Physicians House Calls	Long Term Care	Sep-13	Sep-13	Sep-13	Dec-13	Nov-13

CRISP Portal, ENS & PDMP Adoption by Facility

Count	Organization	Type	Portal Participation Agreement	Training*	Portal Live*	ENS Live*	PDMP Access
831	Piccard Surgery Center, LLC	Ambulatory	Nov-13	May-13	May-13		
832	Pittsville Pharmacy - E Old Ocean City	Pharmacy		Jan-14			Jan-14
833	Poolesville Family Practice	Ambulatory	Mar-12	Jul-12	Jul-12		Nov-13
834	Positive Progression	Ambulatory		Apr-14			Apr-14
835	Potomac Obstetrics and Gynecology	Ambulatory	Mar-13	Mar-13	Mar-13		
836	Potomac Pain & Rehab	Ambulatory		Apr-14			Apr-14
837	Potomac Physician Associates	Ambulatory	Jun-11	Dec-11	Dec-11	Oct-12	Mar-14
838	Potomac Physician Associates Bethesda	Ambulatory	Jun-11	Jun-11	Jun-11		Nov-13
839	Potomac Physician Associates Germantown	Ambulatory	Jun-11	Apr-13	Apr-13		Feb-14
840	Potomac Physician Associates Kensington	Ambulatory	Jun-11	May-13	Jun-13		Feb-14
841	Potomac Physicians PA	Ambulatory	Oct-12	Oct-12	Oct-12	Mar-13	Nov-13
842	Potomac Prompt Medical Care	Ambulatory		Jan-14			Jan-14
843	Potomac Valley Nursing & Wellness Ctr	Long Term Care	Jun-12	Jun-12	Jun-12		
844	PR Family Medicine	Ambulatory		Jan-14			Jan-14
845	Prafull Patel, MD, LLC	Ambulatory	Oct-13	Nov-13	Nov-13		Nov-13
846	Preetinder Sandhu, M.D.	Ambulatory		Apr-14			Apr-14
847	Pregnancy Aid Center	Ambulatory	Apr-13	Apr-13	Jun-13		
848	Preston Family Physicians	Ambulatory		Apr-14			Apr-14
849	Primary Care Coalition of Mont. County	FQHC	Nov-11	Jun-12	Jun-12		
850	Prince George's County Health Department	Government Agency	May-13				
851	Prince George's Hospital Center	Hospital	Jul-12	Apr-13	Apr-13		Nov-13
852	Priority Care Clinic	Pharmacy		Jan-14			Jan-14
853	Priority Care Clinics	Ambulatory		Feb-14			Feb-14
854	Professional Pharmacy of Essex	Pharmacy		Sep-13			Nov-13
855	Progressive Radiology	Radiology	Dec-11	May-12	May-12		
856	Prologue Inc.	Ambulatory	Aug-13	Aug-13	Sep-13		
857	Proyecto Salud Clinic	Ambulatory	May-13	Jun-13	Nov-13	Apr-14	Nov-13
858	Psych Associates of MD	Ambulatory		Apr-14			Apr-14
859	Psychiatry Center of Frederick	Ambulatory		Jan-14			Jan-14
860	Psychotherapeutic Services	Ambulatory	Aug-13	Aug-13		Nov-13	
861	Quarterfield Pharmacy	Pharmacy		Feb-14			Feb-14
862	Quarterfield Pharmacy	Pharmacy		Feb-14			Feb-14
863	Quest Diagnostics	Laboratory	Sep-12				
864	Radiation Physics	Radiology	Nov-12	Aug-13			
865	RadNet	Radiology	Sep-10	Nov-11	Mar-12		
866	Randal Steele, DO	Pharmacy		Feb-14			Feb-14
867	Ravinder K. Rustagi M.D.	Pharmacy		Jan-14			Jan-14
868	REACH Health Services	Ambulatory	Sep-13	Sep-13	Sep-13		Dec-13
869	Reddix Family Health Care	Ambulatory	Jul-11				
870	Redner's Pharmacy - Bel Air	Pharmacy		Feb-14			Feb-14
871	Redners Pharmacy - Joppa	Pharmacy		May-14			May-14
872	Redner's Pharmacy #35	Pharmacy		Jan-14			Jan-14
873	Reeds Pharmacy #3	Pharmacy		Apr-14			Apr-14
874	Reesers Pharmacy Inc	Pharmacy		Mar-14			Mar-14
875	Regional Hematology & Oncology, P.A.	Ambulatory	Feb-14	Mar-14	Mar-14		Mar-14
876	Rehabilitation and Sports Medicine Associates	Ambulatory		Apr-14			Apr-14
877	Rehab Smartcenter	Ambulatory		Apr-14			Apr-14
878	Rheumatology Associates of Baltimore	Ambulatory	Jun-13	Oct-13	Oct-13	Aug-13	
879	Richard Bombach, MD	Ambulatory		Apr-14			Apr-14
880	Riderwood	Long Term Care	Sep-11				
881	Righttime Medical Care	Ambulatory	Mar-11	Apr-14	Apr-14		Apr-14
882	Ritchie Pharmacy	Pharmacy		Apr-14			Apr-14
883	Rite Aid #0104	Pharmacy		May-14			May-14
884	Rite Aid #0278	Pharmacy		Apr-14			Apr-14

CRISP Portal, ENS & PDMP Adoption by Facility

Count	Organization	Type	Portal Participation Agreement	Training*	Portal Live*	ENS Live*	PDMP Access
885	Rite Aid #0287	Pharmacy		Apr-14			Apr-14
886	Rite Aid #0314	Pharmacy		May-14			May-14
887	Rite Aid #0318	Pharmacy		May-14			May-14
888	Rite Aid #0319	Pharmacy		May-14			May-14
889	Rite Aid #0324	Pharmacy		Sep-13			Nov-13
890	Rite Aid #0326	Pharmacy		May-14			May-14
891	Rite Aid #0334	Pharmacy		Apr-14			Apr-14
892	Rite Aid #0336	Pharmacy		May-14			May-14
893	Rite Aid #0337	Pharmacy		May-14			May-14
894	Rite Aid #0339	Pharmacy		Apr-14			Apr-14
895	Rite Aid #0347	Pharmacy		May-14			May-14
896	Rite Aid #0349	Pharmacy		Apr-14			Apr-14
897	Rite Aid #0350	Pharmacy		May-14			May-14
898	Rite Aid #0355	Pharmacy		May-14			May-14
899	Rite Aid #0356	Pharmacy		May-14			May-14
900	Rite Aid #0362	Pharmacy		May-14			May-14
901	Rite Aid #0365	Pharmacy		Apr-14			Apr-14
902	Rite Aid #0366	Pharmacy		May-14			May-14
903	Rite Aid #0372	Pharmacy		May-14			May-14
904	Rite Aid #0373	Pharmacy		May-14			May-14
905	Rite Aid #0374	Pharmacy		Apr-14			Apr-14
906	Rite Aid #0381	Pharmacy		May-14			May-14
907	Rite Aid #0382	Pharmacy		Apr-14			Apr-14
908	Rite Aid #0383	Pharmacy		May-14			May-14
909	Rite Aid #0385	Pharmacy		May-14			May-14
910	Rite Aid #0386	Pharmacy		May-14			May-14
911	Rite Aid #0391	Pharmacy		Apr-14			Apr-14
912	Rite Aid #0392	Pharmacy		May-14			May-14
913	Rite Aid #0476	Pharmacy		May-14			May-14
914	Rite Aid #0482	Pharmacy		Apr-14			Apr-14
915	Rite Aid #0489	Pharmacy		Apr-14			Apr-14
916	Rite Aid #1086	Pharmacy		Jan-14			Jan-14
917	Rite Aid #11197	Pharmacy		Apr-14			Apr-14
918	Rite Aid #11198	Pharmacy		Apr-14			Apr-14
919	Rite Aid #11199	Pharmacy		May-14			May-14
920	Rite Aid #11200	Pharmacy		May-14			May-14
921	Rite Aid #11201	Pharmacy		May-14			May-14
922	Rite Aid #11202	Pharmacy		Apr-14			Apr-14
923	Rite Aid #11203	Pharmacy		Apr-14			Apr-14
924	Rite Aid #11204	Pharmacy		Jan-14			Jan-14
925	Rite Aid #11206	Pharmacy		Apr-14			Apr-14
926	Rite Aid #11208	Pharmacy		May-14			May-14
927	Rite Aid #11209	Pharmacy		May-14			May-14
928	Rite Aid #11210	Pharmacy		Apr-14			Apr-14
929	Rite Aid #11211	Pharmacy		May-14			May-14
930	Rite Aid #11212	Pharmacy		Apr-14			Apr-14
931	Rite Aid #11213	Pharmacy		Nov-13			Nov-13
932	Rite Aid #11218	Pharmacy		May-14			May-14
933	Rite Aid #11219	Pharmacy		Apr-14			Apr-14
934	Rite Aid #1324	Pharmacy		May-14			May-14
935	Rite Aid #1490	Pharmacy		May-14			May-14
936	Rite Aid #1721	Pharmacy		May-14			May-14
937	Rite Aid #1757	Pharmacy		Apr-14			Apr-14
938	Rite Aid #1760	Pharmacy		May-14			May-14
939	Rite Aid #1859	Pharmacy		Apr-14			Apr-14
940	Rite Aid #2120	Pharmacy		May-14			May-14
941	Rite Aid #2204	Pharmacy		May-14			May-14
942	Rite Aid #2205	Pharmacy		May-14			May-14
943	Rite Aid #2207	Pharmacy		May-14			May-14
944	Rite Aid #2209	Pharmacy		May-14			May-14
945	Rite Aid #2210	Pharmacy		Apr-14			Apr-14

CRISP Portal, ENS & PDMP Adoption by Facility

Count	Organization	Type	Portal Participation Agreement	Training*	Portal Live*	ENS Live*	PDMP Access
946	Rite Aid #2212	Pharmacy		Apr-14			Apr-14
947	Rite Aid #2214	Pharmacy		Oct-13			Nov-13
948	Rite Aid #2217	Pharmacy		Apr-14			Apr-14
949	Rite Aid #2220	Pharmacy		May-14			May-14
950	Rite Aid #2223	Pharmacy		May-14			May-14
951	Rite Aid #2231	Pharmacy		May-14			May-14
952	Rite Aid #2235	Pharmacy		Apr-14			Apr-14
953	Rite Aid #2253	Pharmacy		Apr-14			Apr-14
954	Rite Aid #2280	Pharmacy		May-14			May-14
955	Rite Aid #2585	Pharmacy		May-14			May-14
956	Rite Aid #2690	Pharmacy		Apr-14			Apr-14
957	Rite Aid #2750	Pharmacy		May-14			May-14
958	Rite Aid #2752	Pharmacy		Apr-14			Apr-14
959	Rite Aid #3000	Pharmacy		Apr-14			Apr-14
960	Rite Aid #3339	Pharmacy		May-14			May-14
961	Rite Aid #3751	Pharmacy		May-14			May-14
962	Rite Aid #3752	Pharmacy		Apr-14			Apr-14
963	Rite Aid #3757	Pharmacy		Apr-14			Apr-14
964	Rite Aid #3758	Pharmacy		Apr-14			Apr-14
965	Rite Aid #3781	Pharmacy		Apr-14			Apr-14
966	Rite Aid #3782	Pharmacy		Apr-14			Apr-14
967	Rite Aid #3790	Pharmacy		May-14			May-14
968	Rite Aid #3799	Pharmacy		May-14			May-14
969	Rite Aid #3803	Pharmacy		May-14			May-14
970	Rite Aid #3806	Pharmacy		May-14			May-14
971	Rite Aid #3808	Pharmacy		May-14			May-14
972	Rite Aid #3813	Pharmacy		May-14			May-14
973	Rite Aid #3818	Pharmacy		Apr-14			Apr-14
974	Rite Aid #3822	Pharmacy		May-14			May-14
975	Rite Aid #3826	Pharmacy		Apr-14			Apr-14
976	Rite Aid #3827	Pharmacy		Apr-14			Apr-14
977	Rite Aid #3828	Pharmacy		May-14			May-14
978	Rite Aid #3831	Pharmacy		Apr-14			Apr-14
979	Rite Aid #3835	Pharmacy		May-14			May-14
980	Rite Aid #3836	Pharmacy		May-14			May-14
981	Rite Aid #3837	Pharmacy		Apr-14			Apr-14
982	Rite Aid #3868	Pharmacy		May-14			May-14
983	Rite Aid #3871	Pharmacy		Jan-14			Jan-14
984	Rite Aid #3872	Pharmacy		May-14			May-14
985	Rite Aid #4005	Pharmacy		May-14			May-14
986	Rite Aid #4248	Pharmacy		Apr-14			Apr-14
987	Rite Aid #4250	Pharmacy		Apr-14			Apr-14
988	Rite Aid #4255	Pharmacy		May-14			May-14
989	Rite Aid #4295	Pharmacy		May-14			May-14
990	Rite Aid #4575	Pharmacy		May-14			May-14
991	Rite Aid #4597	Pharmacy		May-14			May-14
992	Rite Aid #4665	Pharmacy		Apr-14			Apr-14
993	Rite Aid #4729	Pharmacy		May-14			May-14
994	Rite Aid #4810	Pharmacy		May-14			May-14
995	Rite Aid #4909	Pharmacy		Apr-14			Apr-14
996	Rite Aid #4912	Pharmacy		Apr-14			Apr-14
997	Rite Aid #4915	Pharmacy		May-14			May-14
998	Rite Aid #4917	Pharmacy		Apr-14			Apr-14
999	Rite Aid #4920	Pharmacy		May-14			May-14
1000	Rite Aid #4942	Pharmacy		Apr-14			Apr-14
1001	Rite Aid #4983	Pharmacy		May-14			May-14
1002	Rite Aid #7766	Pharmacy		Apr-14			Apr-14
1003	Rite Aid #7773	Pharmacy		Apr-14			Apr-14
1004	Rite Aid #7932	Pharmacy		May-14			May-14
1005	Ritu Bhambhani, LLC	Ambulatory		Jan-14			Jan-14
1006	Riverside MCO	Payor	May-13			Jun-13	

CRISP Portal, ENS & PDMP Adoption by Facility

Count	Organization	Type	Portal Participation Agreement	Training*	Portal Live*	ENS Live*	PDMP Access
1007	Robinwood Pain Center	Ambulatory	Nov-11	Apr-14	Apr-14		Apr-14
1008	Robyn F. James MD LLC	Ambulatory		May-14			May-14
1009	Rockville Geriatrics and Palliative Medicine	Long Term Care	Mar-12	Dec-13	Dec-13		Dec-13
1010	Rockville Internal Medicine Group	Ambulatory	Jul-11	Dec-11	Jul-12		Nov-13
1011	Roman Ostrovsky M.D	Ambulatory		Jan-14			Jan-14
1012	Rose Hill Family Physicians	Ambulatory	May-14				
1013	Rosen-Hoffberg Rehabilitation and Pain Management	Ambulatory		Jan-14			Jan-14
1014	Rozran & Spatz Orthopedics	Ambulatory	May-14				
1015	Safeway Pharmacy #0128	Pharmacy		Apr-14			Apr-14
1016	Safeway Pharmacy #1075	Pharmacy		Feb-14			Feb-14
1017	Safeway Pharmacy #1089	Pharmacy		Feb-14			Feb-14
1018	Safeway Pharmacy #1616	Pharmacy		Apr-14			Apr-14
1019	Safeway Pharmacy #1657	Pharmacy		Feb-14			Feb-14
1020	Safeway Pharmacy #1715	Pharmacy		Mar-14			Mar-14
1021	Safeway Pharmacy #1731	Pharmacy		Mar-14			Mar-14
1022	Safeway Pharmacy #1880	Pharmacy		May-14			May-14
1023	Safeway Pharmacy #2608	Pharmacy		Feb-14			Feb-14
1024	Safeway Pharmacy #2629	Pharmacy		Feb-14			Feb-14
1025	Safeway Pharmacy #2661	Pharmacy		Apr-14			Apr-14
1026	Safeway Pharmacy #2797	Pharmacy		Feb-14			Feb-14
1027	Saga Medical, Inc.	Ambulatory	Jan-13	Apr-14	Apr-14		Apr-14
1028	Sante Group	Ambulatory	Nov-13				
1029	SAV-ON Pharmacy #7862	Pharmacy		May-14			May-14
1030	Scaria Mathew MD	Ambulatory	Feb-13	Feb-13	Feb-13		Nov-13
1031	Schindel's Pharmacy, Inc.	Pharmacy		May-14			May-14
1032	Scott Maurer, MD	Ambulatory	Jul-11				
1033	Season's Hospice	Long Term Care	Jun-12	Jul-12	Jul-12		
1034	Seidenberg Protzko Eye Associates	Ambulatory	Oct-12	Oct-12	Oct-12		
1035	Service Care Pharmacy	Pharmacy		Apr-14			Apr-14
1036	Seton Medical Group	Ambulatory	St. Agnes Hospital	May-13	May-13	Jun-13	Nov-13
1037	Seton Pain and Rehabilitation Center	Ambulatory		Feb-14			Feb-14
1038	Shady Grove Adventist Hospital	Hospital	Adventist Healthcare	Dec-11	Dec-11	Sep-13	Nov-13
1039	Shady Grove Adventist Radiation Oncology Center	Ambulatory	Mar-12	Jan-13	Nov-12		Dec-13
1040	Shady Grove Orthopedic Associates	Ambulatory		Jan-14			Jan-14
1041	Shady Grove Radiology	Radiology	Feb-12	Dec-12	Dec-12		
1042	Shah Associates	Ambulatory	Dec-13	May-14	May-14		May-14
1043	Sharon M. Messics, MD	Ambulatory	Feb-13			May-13	
1044	Sharon Y Alongi MD PA	Ambulatory	Apr-14	Apr-14			Apr-14
1045	Sharpsburg Pharmacy	Pharmacy		Feb-14			Feb-14
1046	Shayona Pharmacy	Pharmacy		Mar-14			Mar-14
1047	Sheo P Sharma MD PA	Ambulatory		May-14			May-14
1048	Shepherd's Clinic	Ambulatory	Jul-11	Nov-11	Nov-11		
1049	Sheppard Pratt Physician's P.A.	Ambulatory	Dec-13	May-14	May-14		May-14
1050	Shoppers Pharmacy #2256	Pharmacy		Apr-14			Apr-14
1051	Shoppers Pharmacy #2283/926	Pharmacy		Apr-14			Apr-14
1052	Shoppers Pharmacy #2287/941	Pharmacy		Mar-14			Mar-14
1053	Shoppers Pharmacy #2290/951	Pharmacy		Mar-14			Mar-14
1054	Shoppers Pharmacy #2293/961	Pharmacy		Apr-14			Apr-14
1055	Shoppers Pharmacy #2369/953	Pharmacy		Apr-14			Apr-14
1056	Shoppers Pharmacy #2371/956	Pharmacy		Apr-14			Apr-14
1057	Shoppers Pharmacy #2377/969	Pharmacy		Apr-14			Apr-14
1058	Shoprite Pharmacy #536	Pharmacy		Feb-14			Feb-14
1059	Shoprite Pharmacy #545	Pharmacy		Sep-13			Nov-13
1060	Shoprite Pharmacy #547	Pharmacy		Mar-14			Mar-14
1061	Shoprite Pharmacy #548	Pharmacy		Mar-14			Mar-14
1062	Shoprite Pharmacy #549	Pharmacy		Apr-14			Apr-14
1063	Shoprite Pharmacy #551	Pharmacy		Mar-14			Mar-14
1064	Shoprite Pharmacy #555	Pharmacy		Apr-14			Apr-14

CRISP Portal, ENS & PDMP Adoption by Facility

Count	Organization	Type	Portal Participation Agreement	Training*	Portal Live*	ENS Live*	PDMP Access
1065	Shoprite Pharmacy #563	Pharmacy		Apr-14			Apr-14
1066	Shoprite Pharmacy #567	Pharmacy		Apr-14			Apr-14
1067	Shore Family Medicine of Denton	Ambulatory		May-14			May-14
1068	Sinai Hospital	Hospital	LifeBridge Health	Aug-12	Sep-12		Nov-13
1069	Smaldore Family Practice	Ambulatory	Apr-13	Aug-13	Aug-13		Nov-13
1070	Smart Pain Management	Ambulatory	Feb-14	Apr-14	Apr-14		Apr-14
1071	Snow Hill Family Medicine	Ambulatory		Feb-14			Feb-14
1072	Snow Hill Pharmacy Inc	Pharmacy		Mar-14			Mar-14
1073	Sood Family Medicine	Ambulatory	Mar-12	Sep-13	Sep-13		Nov-13
1074	South Baltimore County Medical Center	Ambulatory	Kaiser Permanente	Mar-14			Mar-14
1075	South Baltimore Pharmacy	Pharmacy		Mar-14			Mar-14
1076	South Cumberland Pharmacy	Pharmacy		Mar-14			Mar-14
1077	South River Family Medicine	Ambulatory	Anne Arundel HealthCare Enterprises, Inc.	Jun-13	Jul-13		Apr-14
1078	South River Internal Medicine	Ambulatory		Jan-14			Jan-14
1079	Southern Maryland Women's Healthcare	Ambulatory	Feb-14	May-14			May-14
1080	Spectrum Behavioral Health	Ambulatory		May-14			May-14
1081	Spine Team Maryland (Affiliated with Doctors Community Hospital)	Ambulatory		Feb-14			Feb-14
1082	Spine, Sports Medicine and Pain Management, LLC	Ambulatory		Mar-14			Mar-14
1083	Sports and Spine Pain Management	Ambulatory		Feb-14			Feb-14
1084	Springfield Hospital Center	Ambulatory		Feb-14			Feb-14
1085	Sridhar Chatrathi, MD PC	Ambulatory	Mar-14	Apr-14	Apr-14		Apr-14
1086	St. Agnes Hospital	Hospital	Oct-11	Dec-12	Dec-12		Nov-13
1087	St. John's Pharmacy	Pharmacy		Jan-14			Jan-14
1088	Stem-Ross Weight Loss Center	Ambulatory		Jan-14			Jan-14
1089	Stephanie Durruthy, MD.PA	Ambulatory		Apr-14			Apr-14
1090	Steven Lacher MD PA	Ambulatory	Aug-13	Aug-13	Sep-13		Nov-13
1091	Steven Lenowitz, MD, LLC	Ambulatory		Apr-14			Apr-14
1092	Steven Salzberg MD	Ambulatory		Apr-14			Apr-14
1093	Steve's Pharmacy	Pharmacy		Jan-14			Jan-14
1094	Stone Run Family Medicine	Ambulatory	Jun-12	Jun-12	Jun-12	Oct-12	Nov-13
1095	Suburban Hospital	Hospital	Sep-11	Nov-11	Sep-11		Nov-13
1096	Suburban Psychiatric Associates	Ambulatory		Jan-14			Jan-14
1097	Summit Orthopedics	Ambulatory		Apr-14			Apr-14
1098	Sun Pharmacy	Pharmacy		Mar-14			Mar-14
1099	Susquehanna Obstetrics Gynecology & Nurse Midwifery	Ambulatory	Aug-12				
1100	Tansinda Medical Associates	Ambulatory	Oct-12				
1101	Target Store #T-1000	Pharmacy		Apr-14			Apr-14
1102	Target Store #T-1001	Pharmacy		May-14			May-14
1103	Target Store #T-1002	Pharmacy		Mar-14			Mar-14
1104	Target Store #T-1006	Pharmacy		Mar-14			Mar-14
1105	Target Store #T-1042	Pharmacy		Apr-14			Apr-14
1106	Target Store #T-1043	Pharmacy		May-14			May-14
1107	Target Store #T-1142	Pharmacy		Apr-14			Apr-14
1108	Target Store #T-1193	Pharmacy		Apr-14			Apr-14
1109	Target Store #T-1257	Pharmacy		Mar-14			Mar-14
1110	Target Store #T-1258	Pharmacy		Apr-14			Apr-14
1111	Target Store #T-1265	Pharmacy		May-14			May-14
1112	Target Store #T-1854	Pharmacy		May-14			May-14
1113	Target Store #T-1871	Pharmacy		Apr-14			Apr-14
1114	Target Store #T-1938	Pharmacy		Apr-14			Apr-14
1115	Target Store #T-1970	Pharmacy		Apr-14			Apr-14
1116	Target Store #T-2393	Pharmacy		Apr-14			Apr-14
1117	Target Store #T-2845	Pharmacy		Apr-14			Apr-14
1118	THC - Bon Secours	Ambulatory	Total Healthcare				
1119	THC - Division Street	FQHC	Total Healthcare	Jun-13	Jun-13		Nov-13

CRISP Portal, ENS & PDMP Adoption by Facility

Count	Organization	Type	Portal Participation Agreement	Training*	Portal Live*	ENS Live*	PDMP Access
1120	THC - Kirk Avenue	FQHC	Total Healthcare	Jul-13	Jul-13		Nov-13
1121	THC - Linden Pediatrics	Ambulatory	Total Healthcare	Jul-13	Oct-13		Nov-13
1122	THC - Men's Health	Ambulatory	Total Healthcare	Nov-13	Nov-13		Nov-13
1123	THC - Mondawmin	FQHC	Total Healthcare	May-13	Jul-13		Nov-13
1124	THC - Saratoga	Ambulatory	Total Healthcare	Nov-13	Nov-13		Nov-13
1125	THC - True Health	Ambulatory	Total Healthcare	Jul-13	Oct-13		Nov-13
1126	THC - Westside	Ambulatory	Total Healthcare	Jul-13	Nov-13		Nov-13
1127	The Asbury Group	Long Term Care	Dec-13	Mar-14	Mar-14		Mar-14
1128	The Carle Center for Pain Management, LLC	Ambulatory		Mar-14			Mar-14
1129	The Carol M Porto Treatment Center	Ambulatory		Jan-14			Jan-14
1130	The Casey Health Institute	Ambulatory	Nov-13	Jan-14	Jan-14		Jan-14
1131	The Center for Breast Health	Ambulatory	Sep-13	Aug-13	Oct-13		Nov-13
1132	The Coordinating Center	Ambulatory	Jul-13			Nov-13	
1133	The Kahan Center For Pain Management	Ambulatory	Sep-13	Jan-14	Jan-14		Jan-14
1134	The Lifebridge Pharmacy at Northwest Hospital	Pharmacy		Jan-14			Jan-14
1135	The Lifebridge Pharmacy at Sinai Hospital	Pharmacy		Jan-14			Jan-14
1136	The Lions Center for Rehabilitation and Extended Care	Long Term Care	May-13	Jun-13	Jul-13	Jun-13	
1137	The Pain Management Group	Ambulatory		Apr-14			Apr-14
1138	The Pain Treatment Center of Greater Washington	Ambulatory		Apr-14			Apr-14
1139	The Pediatric Group	Ambulatory	Mar-12	Jul-12	Jul-12	Apr-13	
1140	The Primary Care Group of Maryland	Ambulatory	Apr-13	Apr-13	Apr-13		Nov-13
1141	The Sandra and Malcolm Berman Brain & Spine Instit	Ambulatory		Mar-14			Mar-14
1142	Therapeutic Living For Families	Ambulatory	Aug-13	Aug-13	Oct-13	Jan-14	
1143	Thomas E Maslen, MD, LLC	Ambulatory	Feb-13	May-13	May-13		Nov-13
1144	Three Lower Counties Community Services	FQHC	Jan-14				
1145	Thrive Behavioral Health	Ambulatory	Apr-14				
1146	Thrive Center	Ambulatory		May-14			May-14
1147	Tidewater Pharmacy Inc	Pharmacy		Jan-14			Jan-14
1148	TLCCS - Healthway Drive	Ambulatory	Three Lower Counties Community Services				
1149	TLCCS - Phillip Morris	Ambulatory	Three Lower Counties Community Services				
1150	TLCCS - Pocomoke	Ambulatory	Three Lower Counties Community Services	May-14	May-14		May-14
1151	TLCCS - Princess Anne	Ambulatory	Three Lower Counties Community Services				
1152	TLCCS - Riverside	Ambulatory	Three Lower Counties Community Services	Apr-14	Apr-14		Apr-14
1153	TLCCS - Sweetbay Pediatrics	Ambulatory	Three Lower Counties Community Services				
1154	TLCCS - Woodbrooke	Ambulatory	Three Lower Counties Community Services	Apr-14	Apr-14		Apr-14
1155	Total Family Care	Ambulatory	Aug-13				

CRISP Portal, ENS & PDMP Adoption by Facility

Count	Organization	Type	Portal Participation Agreement	Training*	Portal Live*	ENS Live*	PDMP Access
1156	Total Healthcare	FQHC	May-13	Jul-13	Jul-13	Nov-13	Nov-13
1157	Towson Neurology Associates, PA	Ambulatory		Mar-14			Mar-14
1158	Towson Pharmacy	Pharmacy		Apr-14			Apr-14
1159	True Care Medical	Ambulatory		Mar-14			Mar-14
1160	Turning Point Clinic	Ambulatory		May-14			May-14
1161	Ulmer Family Medicine	Ambulatory	Feb-12	May-12	May-12	Oct-12	Nov-13
1162	UMMS Pharmacy - Redwood	Pharmacy		Apr-14			Apr-14
1163	Union Bridge Family Practice	Ambulatory		Jan-14			Jan-14
1164	Union Hospital of Cecil County	Hospital	Feb-11	Sep-12	Sep-12		Nov-13
1165	Union Neurology Services	Ambulatory	Feb-11	Feb-14	Feb-14		Feb-14
1166	Union Primary Care Elkton	Ambulatory	Feb-11	Apr-13	Apr-13		Nov-13
1167	United Health Care	Payor	Sep-13			Nov-13	
1168	University Care Heritage Crossing	Ambulatory	University of Maryland Medical Center	May-12	May-13	Aug-13	Jan-14
1169	University Care of Edmondson Village	Ambulatory	University of Maryland Medical Center	Jun-13	May-13	Aug-13	Nov-13
1170	University Care of Shipley's Choice	Ambulatory	University of Maryland Medical Center	May-12	May-13	Aug-13	
1171	University Family Medicine Faculty Physicians	Ambulatory	University of Maryland Medical Center	Apr-13	Apr-13	Mar-13	Nov-13
1172	University of Maryland Cardiology Physicians	Ambulatory	University of Maryland Medical Center	Mar-13	Apr-13		
1173	University of Maryland Charles Regional Medical Center (Civista Medical Center)	Hospital	University of Maryland Medical System	Jan-13	Jan-13		Nov-13
1174	University of Maryland Medical Center	Hospital	University of Maryland Medical System	Jul-12	Jul-12		Nov-13
1175	University of Maryland Medical Center Midtown Campus	Hospital	University of Maryland Medical System	Feb-13	Feb-13		Nov-13
1176	University of Maryland Medical System	Health System		Aug-11	Dec-13	Dec-13	Dec-13
1177	University of Maryland Pain Center	Ambulatory		Jan-14			Jan-14
1178	University of Maryland Rehabilitation and Orthopaedic Institute (formerly, James Lawrence Kernan Hospital)	Hospital	University of Maryland Medical System	Feb-14	Feb-14		Feb-14
1179	University of Maryland Shore Medical Center at Chestertown	Hospital	University of Maryland Medical System	Mar-13	Mar-13		Nov-13
1180	University of Maryland Shore Medical Center at Dorchester	Hospital	University of Maryland Medical System	Jan-14	Jan-14		Jan-14
1181	University of Maryland Shore Medical Center at Easton	Hospital	University of Maryland Medical System	Mar-13	Oct-13		Apr-14
1182	University of Maryland St. Joseph Medical Center	Hospital		Oct-11	Mar-12	May-12	Aug-12
1183	Upper Bay Counseling and Support Services	Ambulatory		Aug-13	Oct-13	Sep-13	Dec-13
1184	University of Maryland Upper Chesapeake Medical Center	Hospital		Nov-11	Aug-12	Aug-12	Nov-13
1185	VA Maryland Health Care System	Government Agency		Apr-14			Apr-14
1186	Vel Natesan MD PA	Ambulatory		Apr-14	May-14		May-14
1187	Vesta, Inc.	Ambulatory		Nov-13	Mar-14	Mar-14	Mar-14
1188	Villa Maria of Washington County	Ambulatory		Apr-14			Apr-14
1189	Village at Rockville	Long Term Care		Jun-11	Nov-11	Nov-11	
1190	Village Green Apothecary	Pharmacy		Apr-14			Apr-14
1191	Virgo-Carter Pediatrics	Ambulatory		Jun-12			

CRISP Portal, ENS & PDMP Adoption by Facility

Count	Organization	Type	Portal Participation Agreement	Training*	Portal Live*	ENS Live*	PDMP Access
1192	Vishal Datta, M.D., P.A.	Ambulatory	May-13	May-13	Sep-13		
1193	Walgreens #02446	Pharmacy		Mar-14			Mar-14
1194	Walgreens #05408	Pharmacy		Feb-14			Feb-14
1195	Walgreens #05409	Pharmacy		Mar-14			Mar-14
1196	Walgreens #05410	Pharmacy		Apr-14			Apr-14
1197	Walgreens #05587	Pharmacy		Mar-14			Mar-14
1198	Walgreens #05623	Pharmacy		Apr-14			Apr-14
1199	Walgreens #05686	Pharmacy		Feb-14			Feb-14
1200	Walgreens #06265	Pharmacy		Mar-14			Mar-14
1201	Walgreens #06320	Pharmacy		Mar-14			Mar-14
1202	Walgreens #06779	Pharmacy		Apr-14			Apr-14
1203	Walgreens #07357	Pharmacy		Feb-14			Feb-14
1204	Walgreens #07554	Pharmacy		Mar-14			Mar-14
1205	Walgreens #07573	Pharmacy		Feb-14			Feb-14
1206	Walgreens #07574	Pharmacy		Apr-14			Apr-14
1207	Walgreens #07701	Pharmacy		Apr-14			Apr-14
1208	Walgreens #09028	Pharmacy		Mar-14			Mar-14
1209	Walgreens #09342	Pharmacy		Mar-14			Mar-14
1210	Walgreens #09632	Pharmacy		Feb-14			Feb-14
1211	Walgreens #09926	Pharmacy		Mar-14			Mar-14
1212	Walgreens #09927	Pharmacy		Mar-14			Mar-14
1213	Walgreens #09967	Pharmacy		Feb-14			Feb-14
1214	Walgreens #10063	Pharmacy		Mar-14			Mar-14
1215	Walgreens #10076	Pharmacy		Mar-14			Mar-14
1216	Walgreens #10402	Pharmacy		Mar-14			Mar-14
1217	Walgreens #10539	Pharmacy		Feb-14			Feb-14
1218	Walgreens #10976	Pharmacy		Feb-14			Feb-14
1219	Walgreens #10977	Pharmacy		Feb-14			Feb-14
1220	Walgreens #11054	Pharmacy		Feb-14			Feb-14
1221	Walgreens #11123	Pharmacy		May-14			May-14
1222	Walgreens #11140	Pharmacy		Mar-14			Mar-14
1223	Walgreens #11169	Pharmacy		Mar-14			Mar-14
1224	Walgreens #11283	Pharmacy		Feb-14			Feb-14
1225	Walgreens #11501	Pharmacy		Mar-14			Mar-14
1226	Walgreens #11594	Pharmacy		Mar-14			Mar-14
1227	Walgreens #11949	Pharmacy		Feb-14			Feb-14
1228	Walgreens #11999	Pharmacy		Feb-14			Feb-14
1229	Walgreens #12130	Pharmacy		Mar-14			Mar-14
1230	Walgreens #12266	Pharmacy		Feb-14			Feb-14
1231	Walgreens #12324	Pharmacy		Feb-14			Feb-14
1232	Walgreens #12433	Pharmacy		Mar-14			Mar-14
1233	Walgreens #12472	Pharmacy		Mar-14			Mar-14
1234	Walgreens #12560	Pharmacy		Mar-14			Mar-14
1235	Walgreens #12748	Pharmacy		Mar-14			Mar-14
1236	Walgreens #12790	Pharmacy		Mar-14			Mar-14
1237	Walgreens #12846	Pharmacy		Feb-14			Feb-14
1238	Walgreens #13149	Pharmacy		Mar-14			Mar-14
1239	Walgreens #13457	Pharmacy		Mar-14			Mar-14
1240	Walgreens #13606	Pharmacy		Mar-14			Mar-14
1241	Walgreens #13816	Pharmacy		Apr-14			Apr-14
1242	Walgreens #13840	Pharmacy		Mar-14			Mar-14
1243	Walgreens #13892	Pharmacy		Feb-14			Feb-14
1244	Walgreens #13893	Pharmacy		Feb-14			Feb-14
1245	Walgreens #15117	Pharmacy		Feb-14			Mar-14
1246	Walgreens #15130	Pharmacy		Apr-14			Apr-14
1247	Walgreens #15185	Pharmacy		Feb-14			Feb-14
1248	Walgreens #15284	Pharmacy		Mar-14			Mar-14
1249	Walgreens #15958	Pharmacy		Mar-14			Mar-14
1250	Walgreens #15978	Pharmacy		Mar-14			Mar-14
1251	Walgreens #15979	Pharmacy		Mar-14			Mar-14
1252	Walgreens #15980	Pharmacy		Mar-14			Mar-14

CRISP Portal, ENS & PDMP Adoption by Facility

Count	Organization	Type	Portal Participation Agreement	Training*	Portal Live*	ENS Live*	PDMP Access
1253	Walgreens #16186 - GBMC East	Pharmacy		Apr-14			Apr-14
1254	Walgreens #16191 - Sinai Hospital	Pharmacy		May-14			May-14
1255	Walgreens #16199 - St. Agnes Hospital	Pharmacy		May-14			May-14
1256	Walgreens #5331	Pharmacy		Mar-14			Mar-14
1257	Walgreens #6396	Pharmacy		Mar-14			Mar-14
1258	Walgreens #7678	Pharmacy		Mar-14			Mar-14
1259	Walgreens #9028	Pharmacy		Feb-14			Feb-14
1260	Walgreens #9032	Pharmacy		Feb-14			Feb-14
1261	Walgreens Pharmacy	Pharmacy		Feb-14			Feb-14
1262	Walgreens#16197	Pharmacy	May-14	May-14			May-14
1263	Walnut Street Community Health Center	FQHC	Feb-14	Mar-14	Mar-14		Mar-14
1264	Washington Adventist Hospital	Hospital	Adventist Healthcare	Apr-11	Apr-11		Nov-13
1265	Washington Center for Women's and Children's Wellness	Ambulatory		Apr-14			Apr-14
1266	Washington County Health Dept	Government Agency		Jan-14			Jan-14
1267	Washington Open MRI	Radiology	Nov-12				
1268	Waugh Chapel Family Medicine	Ambulatory	Anne Arundel HealthCare Enterprises, Inc.	Jul-13	Sep-13		
1269	Way Station, Inc.	Ambulatory	Mar-13	Jan-14	Jan-14	Apr-13	Jan-14
1270	Wayne Meyer, MD	Ambulatory	Feb-14	Mar-14	Mar-14		Mar-14
1271	We Care Health Services	Ambulatory		May-14			May-14
1272	Wegmans Food Markets #40	Pharmacy		Feb-14			Feb-14
1273	Wegmans Food Markets #53	Pharmacy		Mar-14			Mar-14
1274	Wegmans Food Markets #54	Pharmacy		Mar-14			Mar-14
1275	Wegmans Food Markets #60	Pharmacy		Feb-14			Feb-14
1276	Wegmans Germantown	Pharmacy		Mar-14			Mar-14
1277	Wellspring Family Medicine PC	Ambulatory	Jun-12	Dec-12	Nov-12		
1278	Western Maryland Health System	Hospital	Jan-11	Jan-11	Jan-11		Apr-14
1279	Western Maryland Health System Pharmacy	Pharmacy		Feb-14			Feb-14
1280	Western Maryland Recovery Services	Ambulatory	Oct-13	Oct-13	Oct-13		
1281	Westview Urgent Care	Ambulatory		Apr-14			Apr-14
1282	Wexford Health Sources	Government Agency	Dec-12	Apr-13	Dec-12		Nov-13
1283	White Marsh Psychiatric Associates, LLC	Ambulatory	Apr-14	May-14			May-14
1284	White Plains Medical Center	Ambulatory	May-14	Jan-14			Jan-14
1285	Whitesell's Pharmacy	Pharmacy		Feb-14			Feb-14
1286	Wicomico County Health Department	Government Agency	Jan-13	Apr-13	Apr-13		Nov-13
1287	William Russell, M.D.	Ambulatory		Apr-14			Apr-14
1288	Williamsport Pharmacy	Pharmacy		Mar-14			Mar-14
1289	Willie M. Yu MD PC	Ambulatory	Dec-13	Feb-14			Feb-14
1290	Women's Health Specialists	Ambulatory	Jul-12	Jul-12	Jul-12		Feb-14
1291	Worcester County Health Department	Government Agency	Jan-13	Jul-13	Jul-13		Nov-13
1292	Your docs in - Easton	Ambulatory	Your Docs In - Salisbury	Mar-14	Mar-14		
1293	Your Docs In - Ocean City	Ambulatory	Your Docs In - Salisbury				
1294	Your Docs In - Pocomoke	Ambulatory	Your Docs In - Salisbury	Mar-14	Mar-14		
1295	Your Docs In - Salisbury	Ambulatory	Dec-13	Feb-14	Mar-14		Mar-14
1296	Zenith Medical Care, LLC	Ambulatory	Jul-13				
Total			390	1157	360	94	1039

Key Terms and Notes:

CRISP Portal: The CRISP Portal is a standalone system available via the Internet that provides patient health information from Maryland hospitals and other providers who are connected to the HIE. Currently, select information is available via the portal, including patient demographics, laboratory results, radiology reports, discharge summaries, operative and consult notes, and medication fill history

Encounter Notification System (ENS): A system that notifies providers when one of their patients has an encounter at a Maryland hospital, which includes patient admission, discharge, and transfer activity

CRISP Portal, ENS & PDMP Adoption by Facility

Count	Organization	Type	Portal Participation Agreement	Training*	Portal Live*	ENS Live*	PDMP Access
-------	--------------	------	--------------------------------	-----------	--------------	-----------	-------------

which includes patient admission, discharge, and transfer activity

ENS Live: The number of organizations receiving ENS alerts

Green Shading Indicates Completed: Practices that have completed the category are shaded green with the month indication of completion

Participation Agreement: Providers sign a participation agreement with CRISP in order to query the CRISP Portal. Multiple facilities or organizations can be covered under a single Participation Agreement (e.g. MedStar); entries containing an organization name in the Portal Participation Agreement field indicate the name of the organization that holds the Participation Agreement. Pharmacies are exempt from signing a Participation Agreement.

Patient Education: Education materials are provided to practices to hand out to patients regarding the CRISP Portal before a practice may begin using the Portal

PDMP (Prescription Drug Monitoring Program) Access: Number of organizations using PDMP services; records of prescribing and dispensing of controlled dangerous substances available in CRISP query portal that went live as a pilot in November 2013

Portal Live: An organization has completed the credentialing, legal, and training process and has at least one user approved to use the Portal

Portal Training: CRISP provides training to clinical providers in order for participants to learn how to access clinical information in real-time Training includes information about accessing the Portal and patient education. Training is the first person trained at the facility

* Although most providers/practices follow a sequence (provider agreement, training, usage), some practices completed the steps in a different order; metrics in chart represent a snapshot of CRISP data available at the end of each month, certain dates may fluctuate from month to month

CRISP Other Projects

#	Project Name	Project Description
1	Regional Extension Center Operations	Provides support to 1,000 small practices to achieve meaningful use by providing direct technical assistance through Management Service Organizations
2	Direct Secure Messaging	Provides the ability for an individual clinician or organization to send or receive Secure Email, to support a variety of clinical purposes
3	State Innovation Model (SIM) Reporting and Mapping	Partnering with the Department of Health and Mental Hygiene (DHMH) on the development of hospital encounter reporting and mapping capabilities to support the community integrated medical home model
4	Health Enterprise Zone (HEZ) Dash-boarding and Mapping	Leveraging the capabilities developed under the SIM grant, to offer dash-boarding and technical assistance for the HEZ program
5	Prescription Drug Monitoring Program (PDMP)	The PDMP makes records of the prescribing and dispensing of controlled dangerous substances available in the CRISP Query Portal, in an effort to stem the rise of prescription drug abuse and diversion. The PDMP project went live in mid-December.
6	Health Benefit Exchange (HBE) - Provider Information Management	CRISP is obtaining provider information from the Qualified Health Plans participating in Maryland's HBE and partnering with Optum to produce a verified provider demographics source so that consumers of the HBE can search for health insurance plans by provider name
7	HBE - All Payer Claims Database Unique Identifier	Relying on the Initiate Master Patient Index, CRISP is attaching a unique patient identifier to carrier eligibility files sent to MHCC to enable insights into member churn between commercial Qualified Health Plans and Medicaid
8	HBE - Care Summary	In its early stage, this project would allow a new enrollee in a health plan to choose to send prior clinical records to care coordinators affiliated with their new health plan, such that proactive services may be provided in advance of a new billing history building up
9	Public Health - Electronic Lab Reporting	To support reporting for the public health meaningful use measure, CRISP is sending a copy of electronic reportable labs to the State via Health Level Seven (HL7), providing assistance with the formatting of the lab messages as necessary
10	Public Health - Immunization Reporting	Hospitals will send Immunization messages via HL7 to CRISP which will pass them along to the State to a Secure File Transfer Protocol (SFTP) location
11	Public Health - Syndromic Surveillance	CRISP will send a copy of existing discharge (A04) and update (A08) messages to DHMH via HL7 to an SFTP location, providing assistance with the formatting of the admission, discharge, and transfer (ADT) messages as necessary
12	Department of Public Safety and Correctional Services Query	Providing access to the CRISP Query Portal for Department of Corrections and users at the locked ward at Bon Secours Hospital
13	Single Sign On	Implementing additional HIE capabilities to Medicaid providers, such as single sign on to the HIE
14	DC Hospital Integration	Working with DC Department of Health Care Finance (DHCF) to support DC acute care hospital connectivity with the CRISP HIE infrastructure
15	Medicaid Outreach DHMH	Partnered with DHMH for outreach to eligible professionals and hospitals in regards to the Medicaid Meaningful Use Incentives Program in Maryland