

CRISP Monthly Reports

April 2014

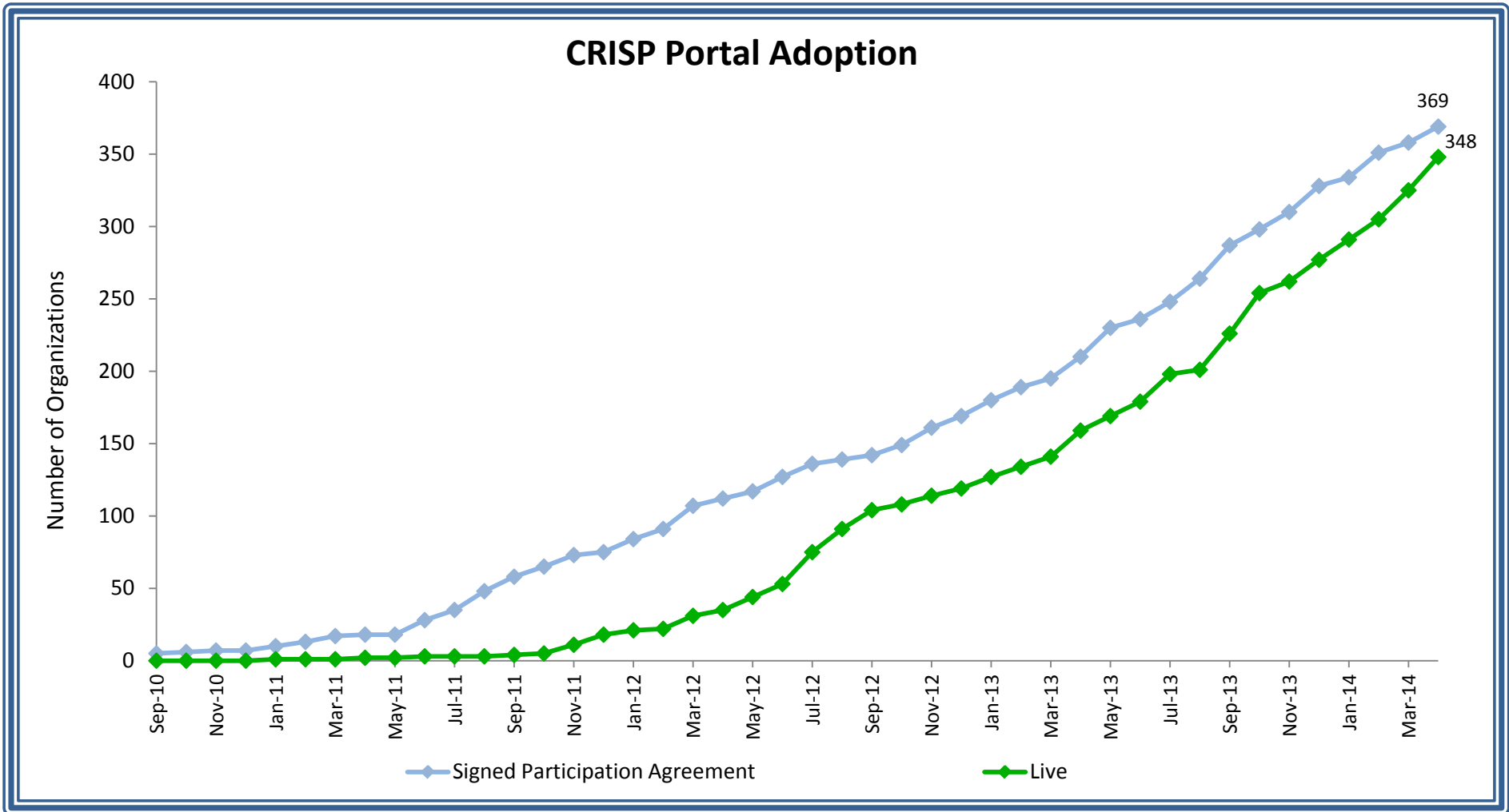
The Chesapeake Regional Information System for our Patients (CRISP), the State-Designated health information exchange (HIE), submits monthly status reports to the Maryland Health Care Commission (MHCC). The monthly reports provide updates to the HIE program and use of HIE services, and the Regional Extension Center (REC) program. The MHCC's Center for Health Information Technology & Innovative Care Delivery uses the information to facilitate development of the State-Designated HIE, craft policy around privacy and security, and develop initiatives to expand health information technology adoption, including electronic health record adoption and meaningful use.

At a Glance					
HIE Category	New February	New March	New April	Total* #	Total* %
Ambulatory Practice Data Consumption (# of organizations) N=6,537					
Signed participation agreements - CRISP Portal	14	7	10	249	3.8%
CRISP portal live	9	17	19	236	3.6%
Direct message accounts live	10	27	2	245	3.7%
Encounter notification service live	2	2	5	61	0.9%
Hospital Data Submission (# of hospitals) N=46					
Laboratory reports	0	1	1	33	72%
Radiology reports	0	0	1	39	85%
Transcribed reports	2	0	1	36	80% ¹
Long Term Care Data Consumption (# of organizations) N=235					
Signed participation agreements - CRISP Portal	1	0	0	35	15%
CRISP portal live	2	2	0	24	10%
Encounter notification service live	0	0	0	6	3%
Query Portal Usage					
Number of CRISP Portal queries ²	24,401	33,096	40,111		
Single-sign on live in Maryland hospitals	0	0	0	5	11%

*Totals are cumulative

Notes:

- Garrett County Memorial Hospitals has no plans to submit transcribed reports to CRISP
- Number of CRISP Portal queries not listed in Total # and Total % columns because CRISP Portal queries are not calculated based on a cumulative total over time



Key Terms:

CRISP Portal: A standalone web-based system that contains patient health information from Maryland hospitals and other providers connected to the HIE. Information available via the portal includes patient demographics, laboratory results, radiology reports, discharge summaries, operative and consult notes, and medication fill history

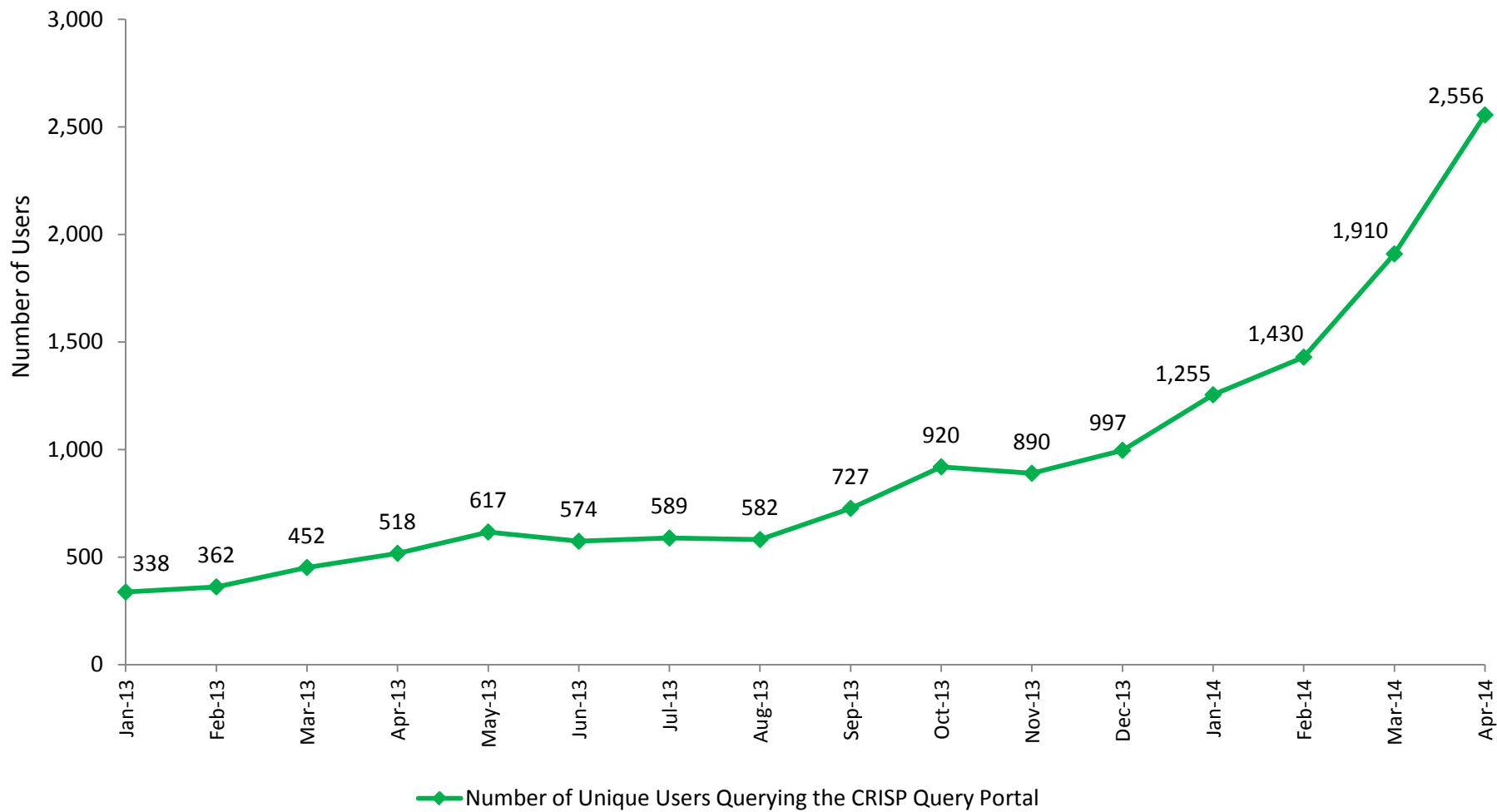
Participation Agreement: Providers sign a participation agreement with CRISP in order to query the CRISP Portal

Live: An organization has completed the credentialing, legal, and training process and has at least one user approved to use the Portal

Notes:

- Gap between organizations with a *Signed Participation Agreement* and those *Live* : some organizations only desire use of ENS and do not intend to use the portal
- Fluctuations in signed participation agreements and number of organizations live are due to revised CRISP reporting process in April 2014

CRISP Query Portal Users



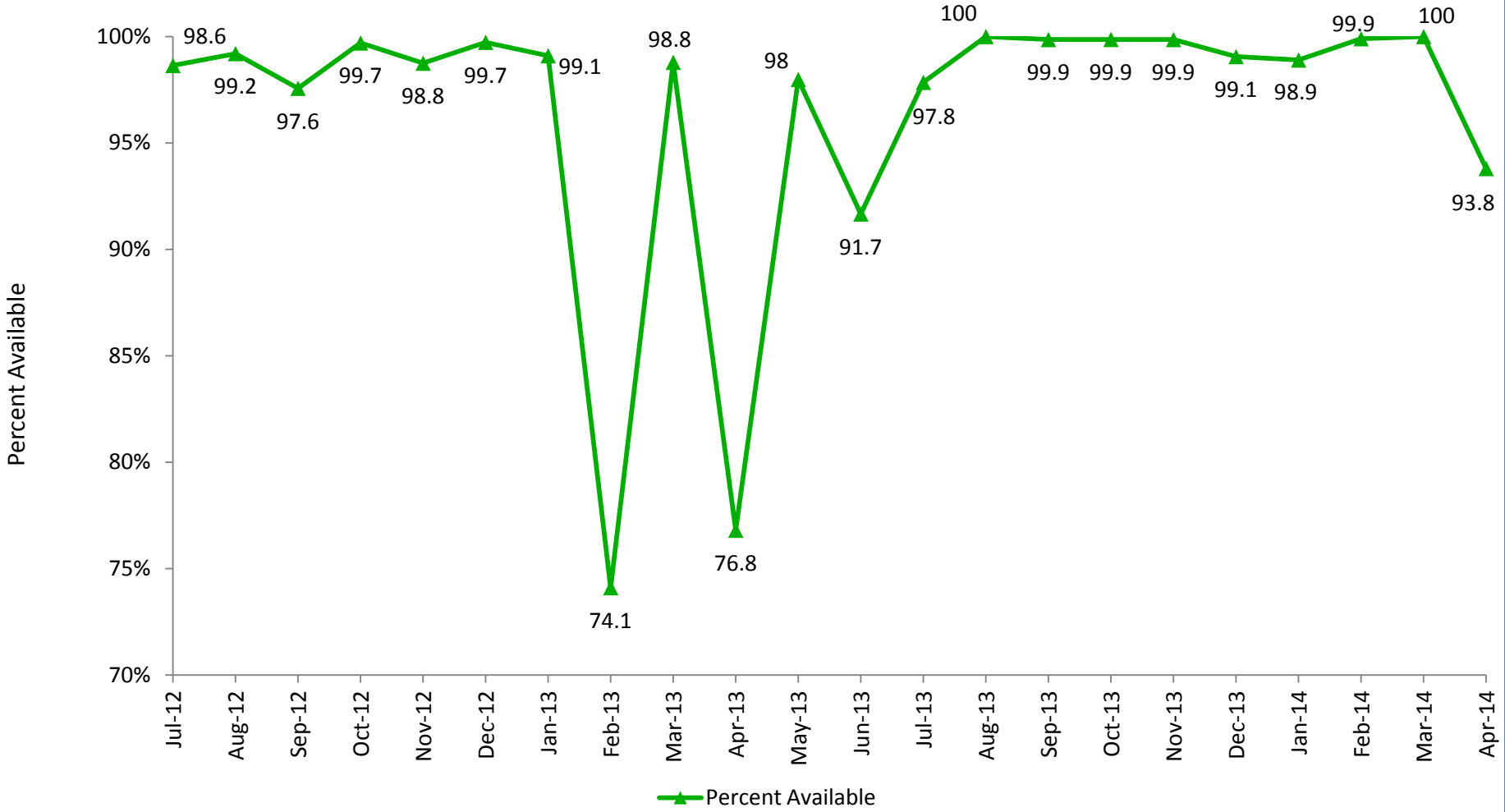
Key Terms:

CRISP Portal: A standalone web-based system that contains patient health information from Maryland hospitals and other providers connected to the HIE. Information available via the portal includes patient demographics, laboratory results, radiology reports, discharge summaries, operative and consult notes, and medication fill history

Users: Unique users who logged into CRISP during the given month

CRISP Portal Availability

Average Portal Availability = 96.4%



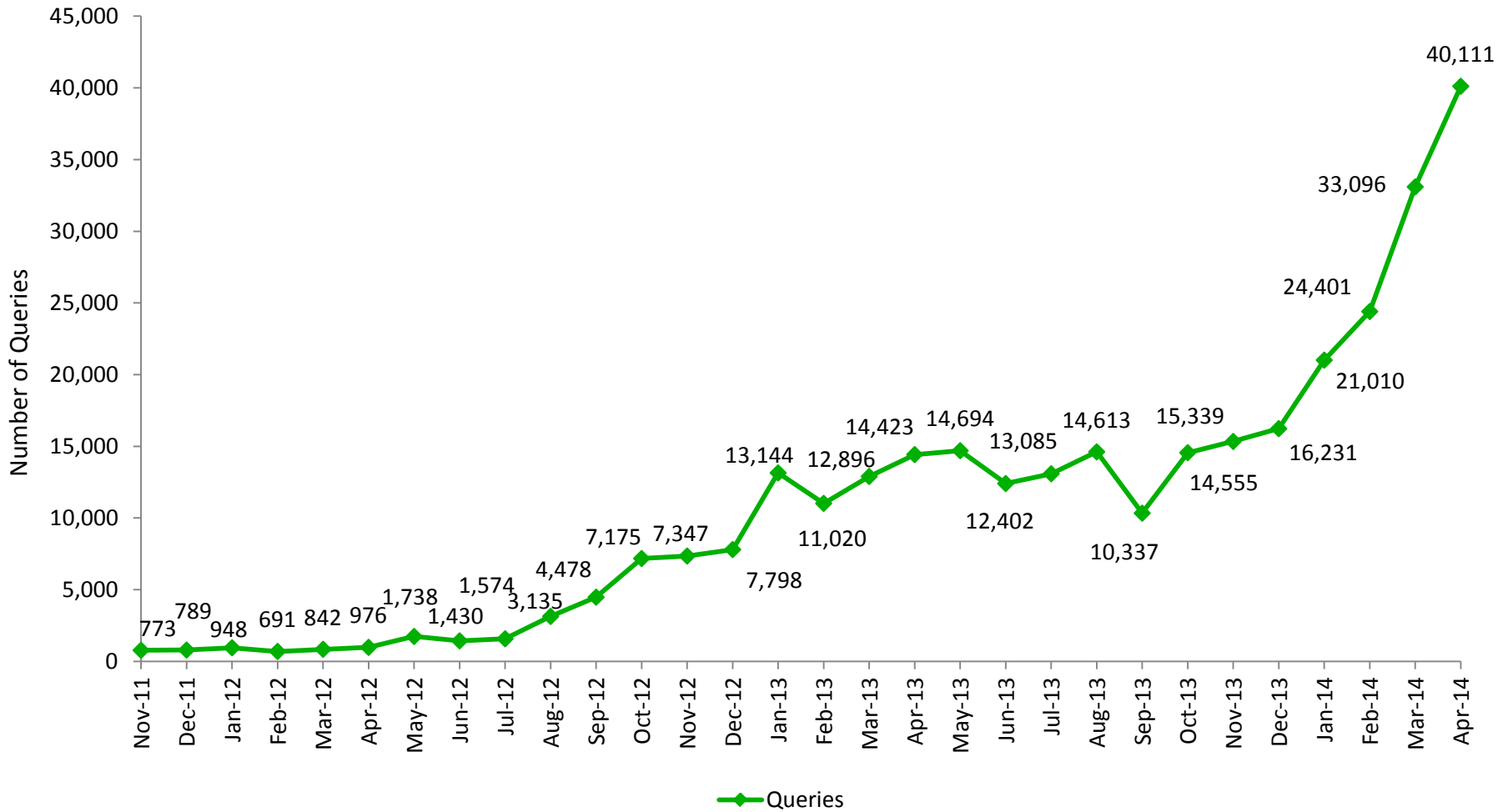
Key Terms:

CRISP Portal: A standalone web-based system that contains patient health information from Maryland hospitals and other providers connected to the HIE. Information available via the portal includes patient demographics, laboratory results, radiology reports, discharge summaries, operative and consult notes, and medication fill history

Portal Availability: The percent of hours that the portal is live out of all possible hours in a month

Percent Available: The percent of hours that the portal is available during the month

CRISP Portal Queries



Key Terms:

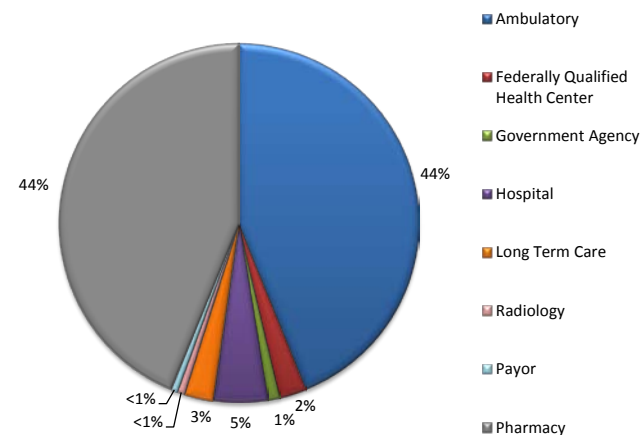
CRISP Portal: The CRISP Portal is a standalone system available via the Internet that provides patient health information from Maryland hospitals and other providers who are connected to the HIE. Currently, select information is available via the portal, including patient demographics, laboratory results, radiology reports, discharge summaries, operative and consult notes, and medication fill history

Queries: Number of searches within the CRISP Portal per month

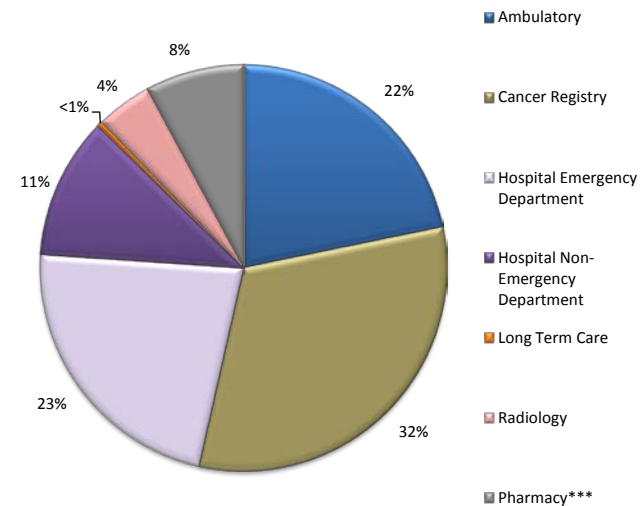
CRISP Portal Queries by Provider Type

Month		Provider Type									Total
		Ambulatory	Cancer Registry	Hospital Emergency Department	Hospital Non-Emergency Department	Long Term Care	Radiology	Pharmacy***	Payor	Government Agency	
Apr-12	#	315	213	285	25	79	58	-	-	976	
Apr-12	%	32	22	29	3	8	6	-	-	100	
May-12	#	388	722	427	42	91	68	-	-	1,738	
May-12	%	22	42	25	2	5	4	-	-	100	
Jun-12	#	331	475	315	38	181	88	-	-	1,430	
Jun-12	%	23	33	22	3	13	6	-	-	100	
Jul-12	#	527	459	382	49	9	149	-	-	1,574	
Jul-12	%	33	29	24	3	1	9	-	-	100	
Aug-12	#	1,027	715	781	96	17	499	-	-	3,135	
Aug-12	%	33	23	25	3	1	16	-	-	100	
Sep-12	#	1,024	2,110	992	0	17	334	-	-	4,478	
Sep-12	%	23	47	22	0	0	7	-	-	100	
Oct-12	#	1,449	3,890	1,193	176	19	448	-	-	7,175	
Oct-12	%	20	54	17	2	0	6	-	-	100	
Nov-12	#	1,930	3,218	1,465	189	14	531	-	-	7,347	
Nov-12	%	26	44	20	3	0	7	-	-	100	
Dec-12	#	1,955	2,948	1,516	233	53	1,093	-	-	7,798	
Dec-12	%	25	38	19	3	1	14	-	-	100	
Jan-13	#	2,066	6,982	1,955	455	40	1,646	-	-	13,144	
Jan-13	%	16	53	15	3	0	13	-	-	100	
Feb-13	#	1,414	6,176	1,987	596	61	786	-	-	11,020	
Feb-13	%	13	56	18	5	1	7	-	-	100	
Mar-13	#	1,956	6,122	3,103	891	31	793	-	-	12,896	
Mar-13	%	15	47	24	7	0	6	-	-	100	
Apr-13	#	2,137	7,017	3,370	1,056	60	783	-	-	14,423	
Apr-13	%	15	49	23	7	0	5	-	-	100	
May-13	#	1,606	7,922	3,507	979	105	575	-	-	14,694	
May-13	%	11	54	24	7	1	4	-	-	100	
Jun-13	#	1,831	5,630	3,256	1,023	65	597	-	-	12,402	
Jun-13	%	15	45	26	8	1	5	-	-	100	
Jul-13	#	2,323	6,003	3,027	1,180	19	533	-	-	13,085	
Jul-13	%	18	46	23	9	0	4	-	-	100	
Aug-13	#	2,065	7,623	2,858	1,376	118	573	-	-	14,613	
Aug-13	%	14	52	20	9	1	4	-	-	100	
Sep-13	#	-	-	-	-	-	-	-	-	10,337	
Sep-13	%	Data not available due to the change of the core infrastructure vendor									
Oct-13	#	3,114	4,116	3,231	3,150	53	618	273	-	14,555	
Oct-13	%	21	28	22	22	0	4	2	-	100	
Nov-13	#	2,378	5,111	3,993	2,951	8	491	407	-	15,339	
Nov-13	%	16	33	26	19	0	3	3	-	100	
Dec-13	#	3,150	4,407	4,723	2,986	8	400	557	-	16,231	
Dec-13	%	19	27	29	18	0	2	3	-	100	
Jan-14	#	6,773	2,766	5,995	3,510	17	636	1,313	-	21,010	
Jan-14	%	32	13	29	17	0	3	6	-	100	
Feb-14	#	7,047	3,409	6,014	3,908	56	464	3,503	-	24,401	
Feb-14	%	29	14	25	16	0	2	14	-	100	
Mar-14	#	8,333	5,086	6,949	4,828	81	646	7,173	-	33,096	
Mar-14	%	25	15	21	15	0	2	22	-	100	
Apr-14	#	11,663	4,278	7,734	4,747	168	722	10,799	-	40,111	
Apr-14	%	29	11	19	12	0	2	27	-	100	
Total	#	66,803	97,399	69,058	34,484	1,370	13,532	24,025	317,008		
Monthly Average	#	2,783	4,058	2,877	1,437	57	564	3,432	12,680		

Types of Providers Consuming CRISP Data*



Total CRISP Portal Queries by Provider Type**



Key Terms:

CRISP Portal: The CRISP Portal is a standalone system available via Internet that provides patient health information from Maryland hospitals and other providers connected to the health information exchange. Currently, select information is available via the portal, including patient demographics, laboratory results, radiology reports, discharge summaries, operative and consult notes, and medication fill history

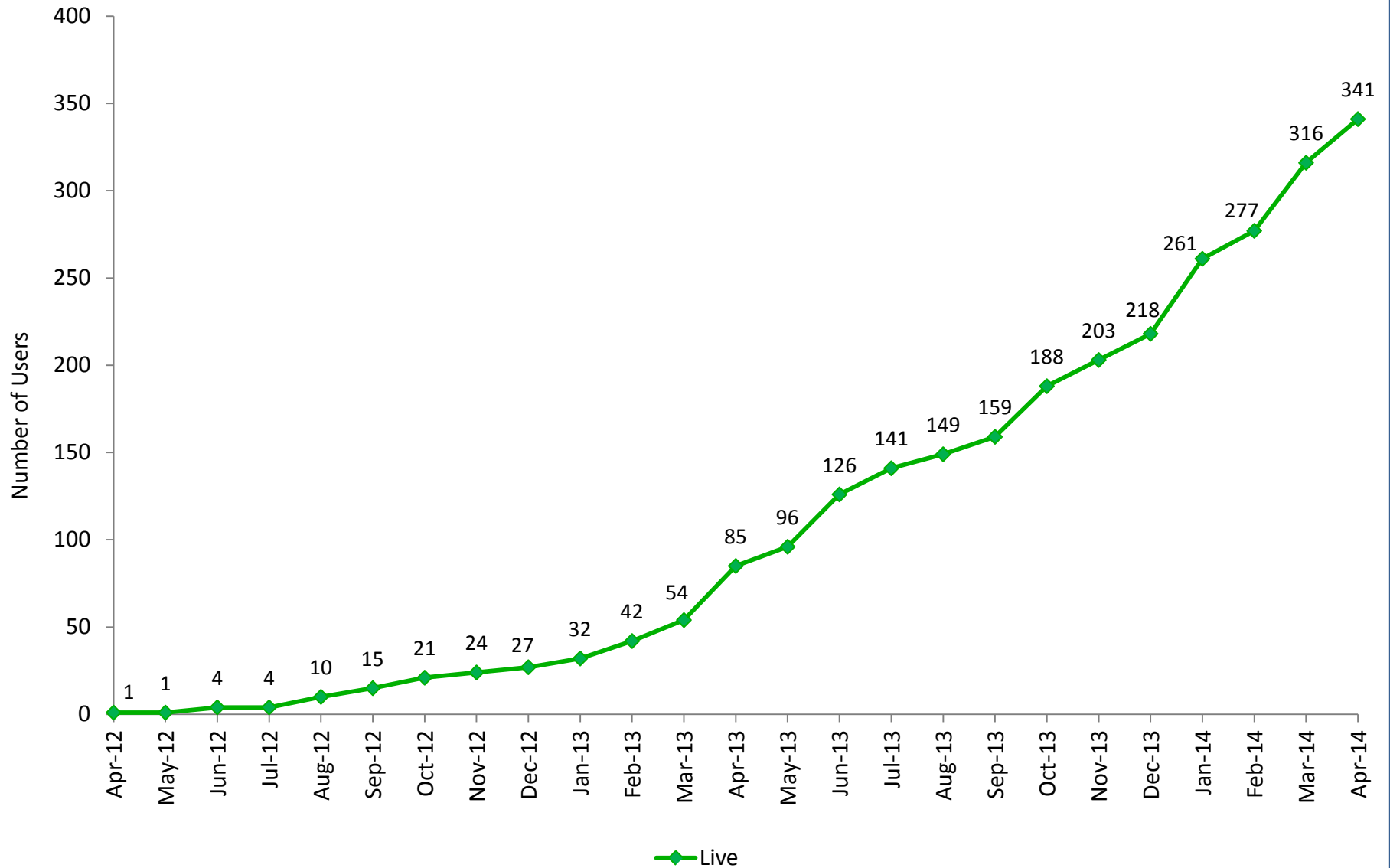
Queries: Number of searches within the CRISP Portal per month

*Includes access to CRISP Portal, encounter notification service (ENS), and/or Prescription Drug Monitoring Program (PDMP); details about providers consuming CRISP data are available on the *CRISP Portal, ENS & PDMP Adoption by Facility* table; PDMP users include prescribers (health care providers with the authorization to prescribe controlled dangerous substances), pharmacists (dispensers of controlled dangerous substances), and delegates (licensed health professionals with access to PDMP under an overseeing prescriber or pharmacist)

** Includes CRISP Portal and PDMP queries

***Pharmacy data available beginning in October 2013

Direct Message Accounts

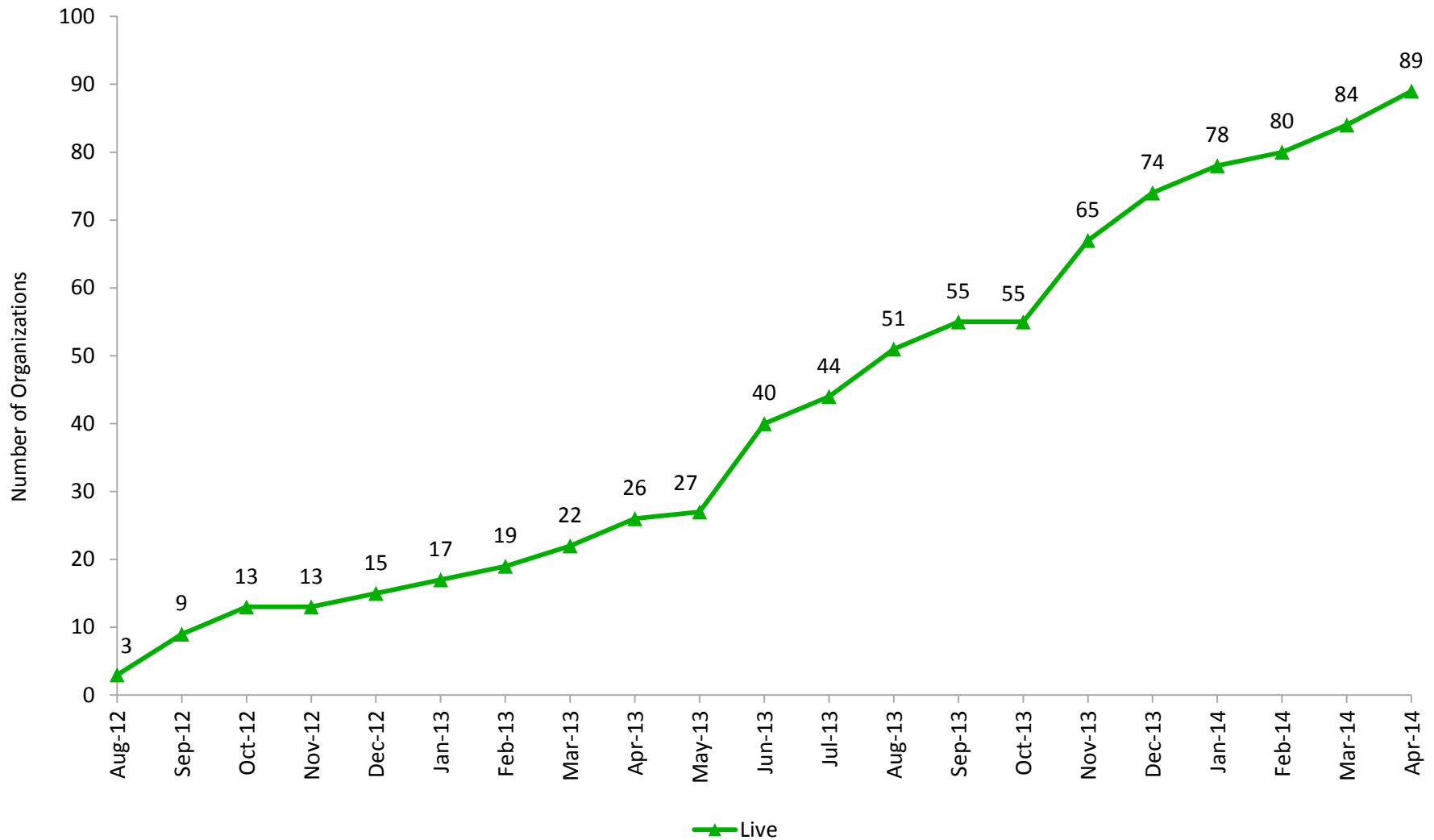


Key Terms:

Direct Message Accounts: A secure and encrypted e-mail service that supports electronic communication between health care providers

Live: Users live with a CRISP Direct Messaging account

Encounter Notification Service Adoption



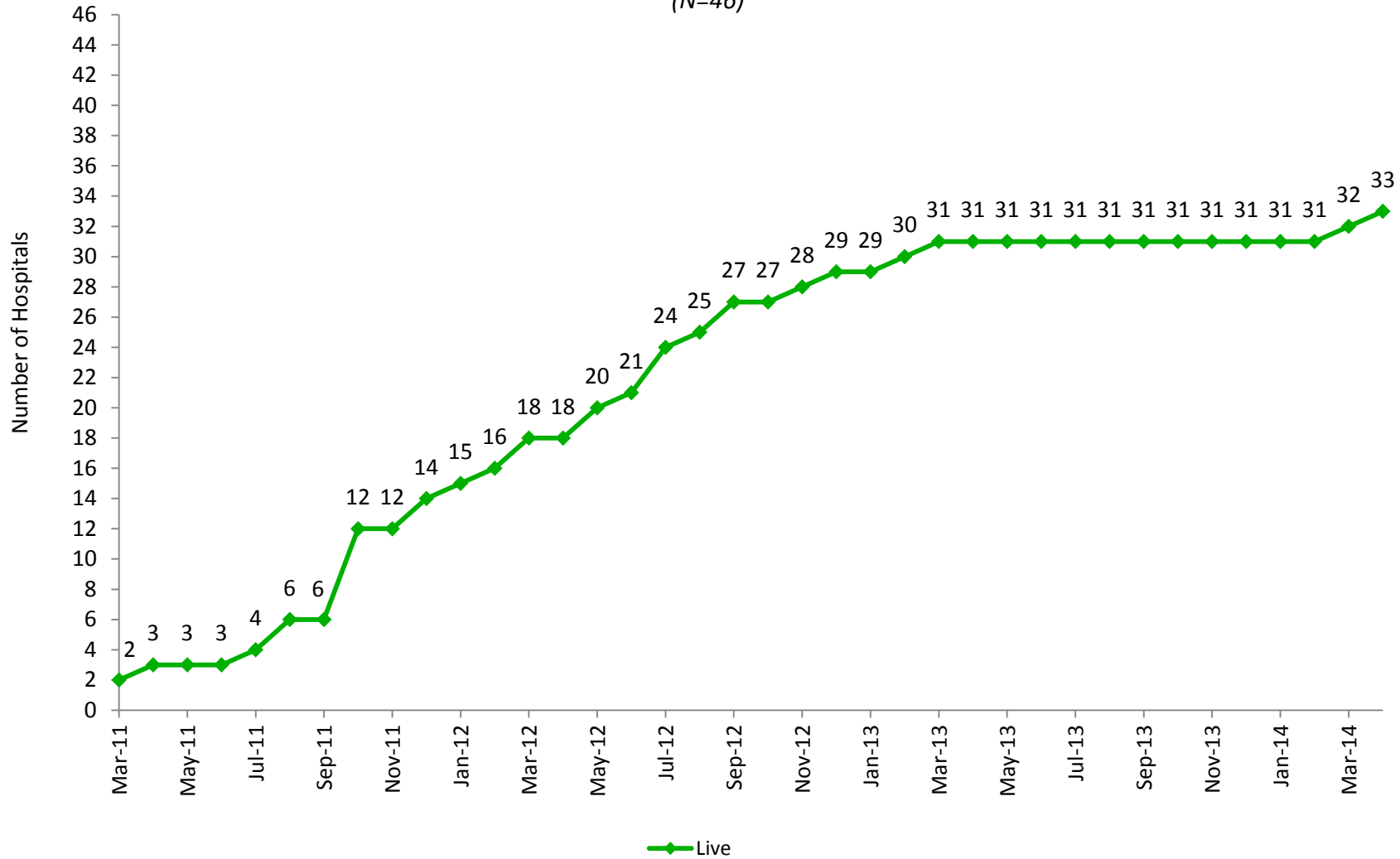
Key Terms:

Encounter Notification System (ENS): A system that notifies providers when one of their patients has an encounter at a Maryland hospital, which includes patient admission, discharge, and transfer activity

Live: The number of organizations receiving ENS alerts

Hospital Data Submission Laboratory Reports Live

(N=46)



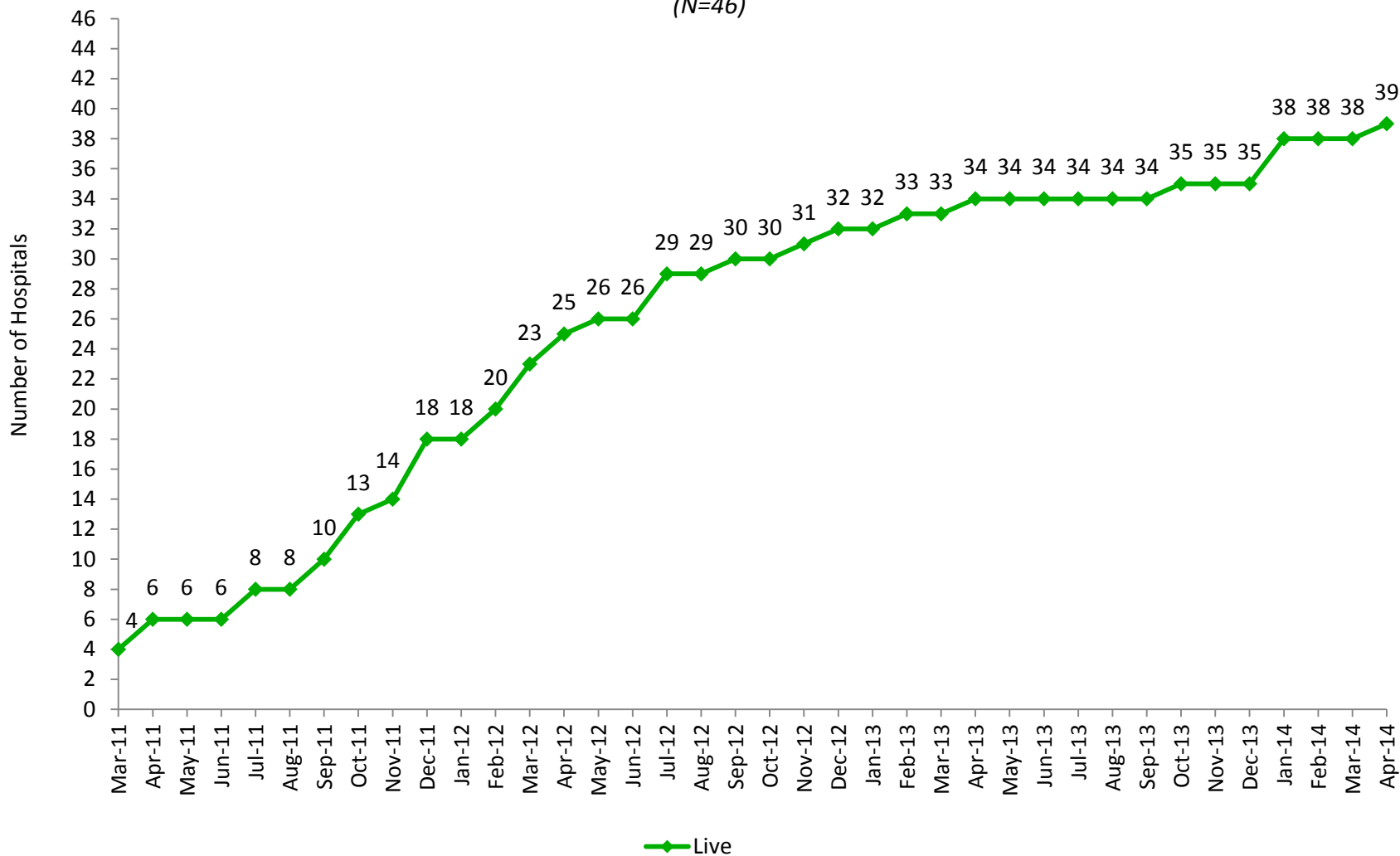
Key Terms:

Live: The number of hospitals using the laboratory documents exchange service

N: The number of acute care hospitals in Maryland

Hospital Data Submission Radiology Reports Live

(N=46)



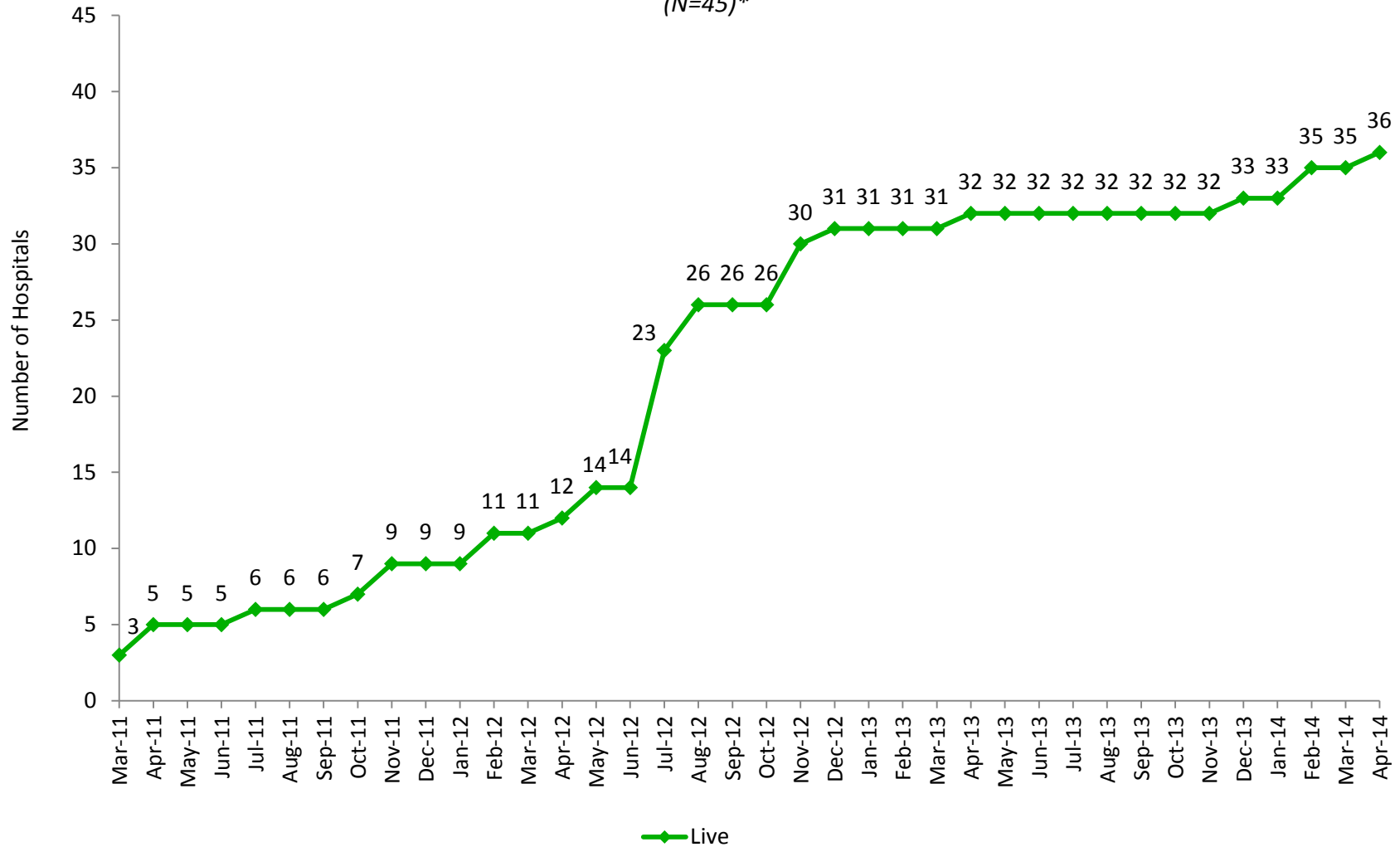
Key Terms:

Live: The number of hospitals using the radiology documents exchange service

N: The number of acute care hospitals in Maryland

Hospital Data Submission Transcribed Reports Live

(N=45)*



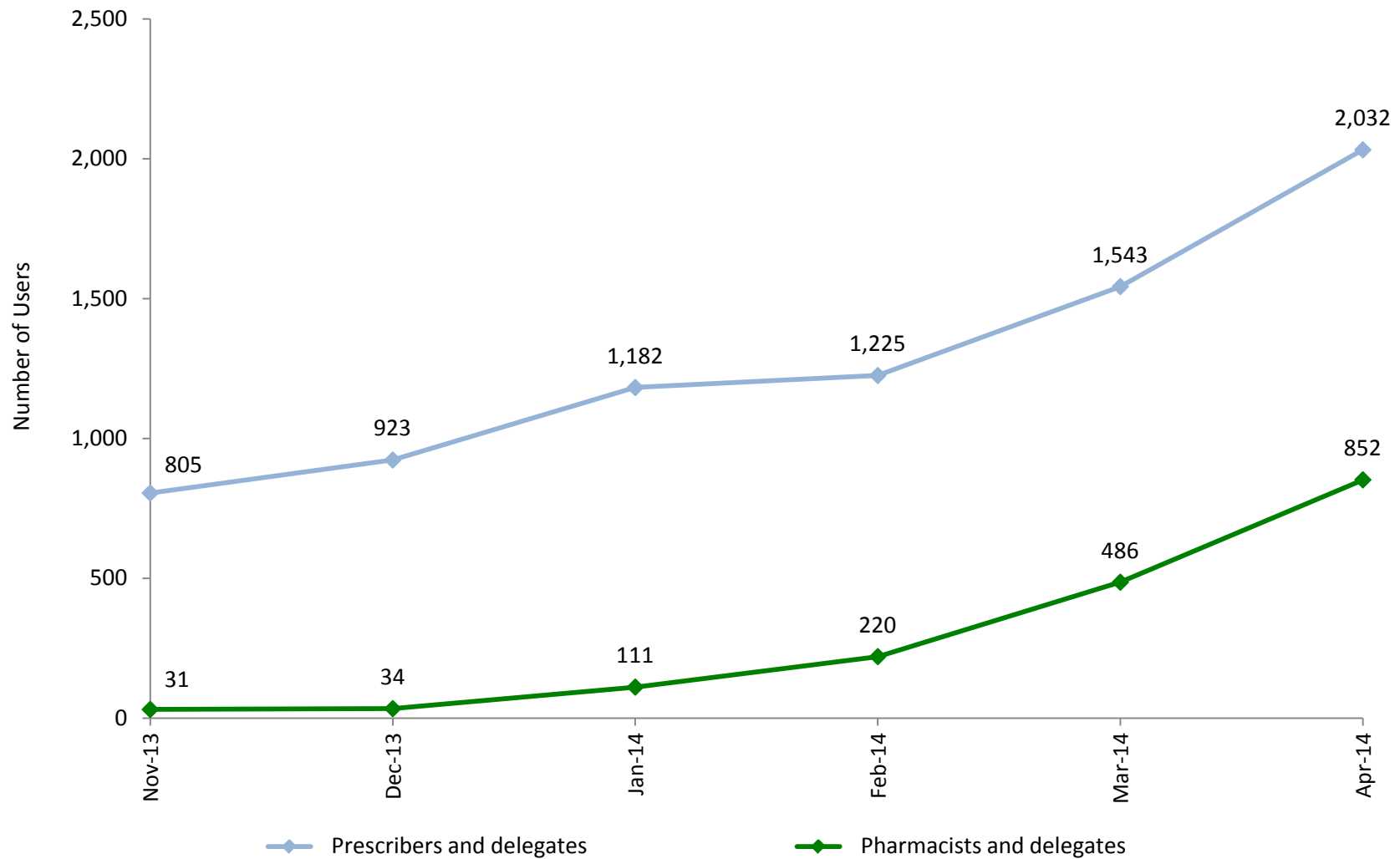
Key Terms:

Live: The number of hospitals using the transcribed exchange service

N: The number of acute care hospitals in Maryland

*Garrett County Memorial Hospital has no plans to submit transcribed reports to CRISP

Prescription Drug Monitoring Program



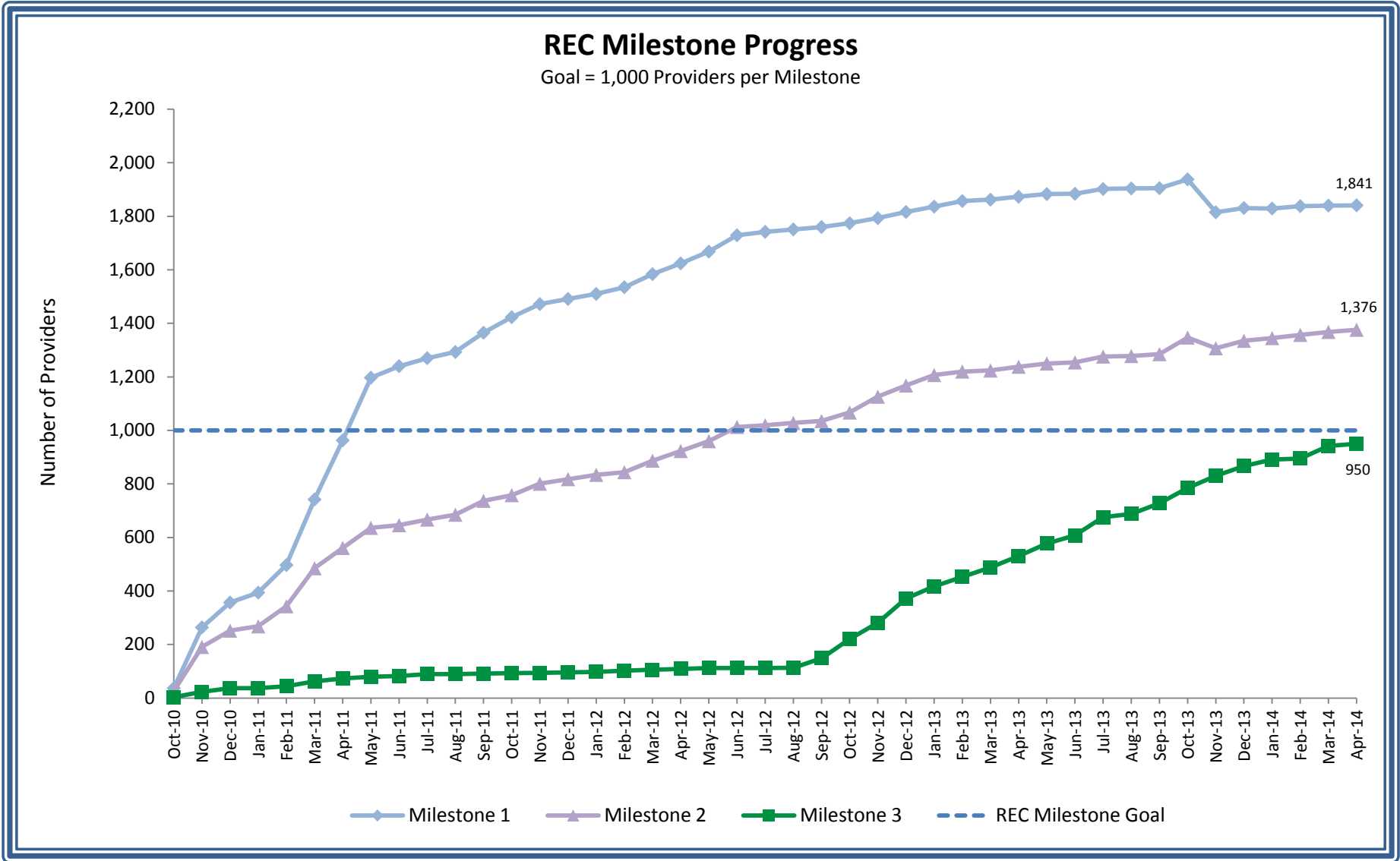
Key Terms:

Prescription Drug Monitoring Program (PDMP): Records of all dispensing of controlled dangerous substances (CDS) available in CRISP query portal that went live as a pilot in November 2013

Prescribers: Health care providers with the authorization to prescribe CDS

Pharmacists: Dispensers of CDS

Delegates: Licensed health professionals with access to PDMP under an overseeing prescriber or pharmacist



Key Terms:

REC: The Regional Extension Center (REC) provides technical assistance to priority primary care providers (PCPs) in adopting and using an electronic health record (EHR)

Milestone 1: A PCP that has signed a participation agreement with a management service organization

Milestone 2: A PCP that has adopted an EHR and is using certain functionalities of the system

Milestone 3: A PCP that has achieved meaningful use defined by the Centers for Medicare & Medicaid Services

REC Milestone Goal: The milestone goal was established by the Office of the National Coordinator for Health Information Technology

REC Progress						
Milestone	Provider did not have an EHR at sign up with the program		Provider had an EHR when signed up with the program		Total	
	#	%	#	%	#	%
Milestone 1	737	40	1,104	60	1,841	184
Milestone 2	691	50	685	50	1,376	138
Milestone 3	453	48	497	52	950	95

Key Terms:

REC: The Regional Extension Center (REC) provides technical assistance to priority primary care providers (PCPs) in adopting and using an electronic health record (EHR)

Milestone 1: A PCP that has signed a participation agreement with a management service organization

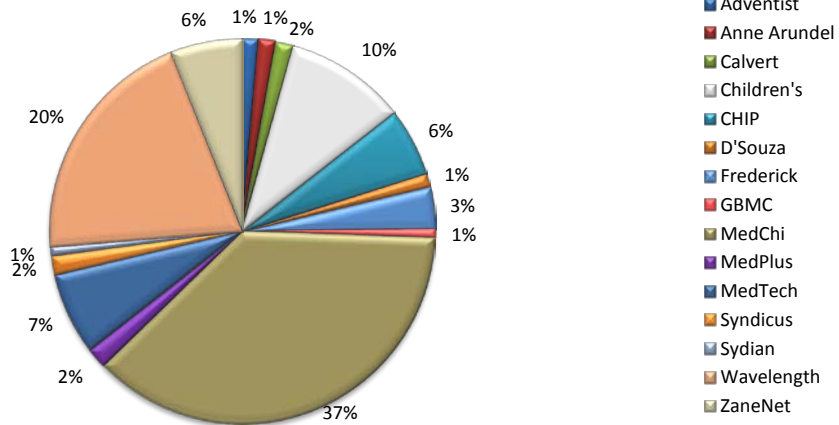
Milestone 2: A PCP that has adopted an EHR and is using certain functionalities of the system

Milestone 3: A PCP that has achieved meaningful use defined by the Centers for Medicare & Medicaid Services

REC Milestone Goal: The milestone goal was established by the Office of the National Coordinator for Health

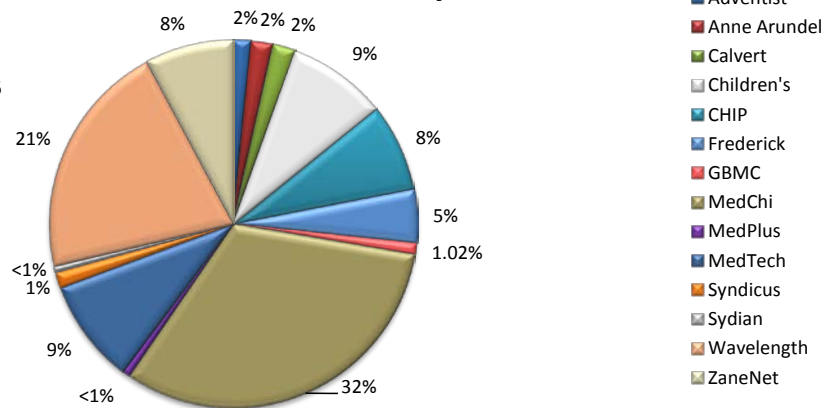
Maryland REC Progress - Milestone 1 Percent PCPs Participating by MSO

Total PCPs signed up with an MSO: 1,841



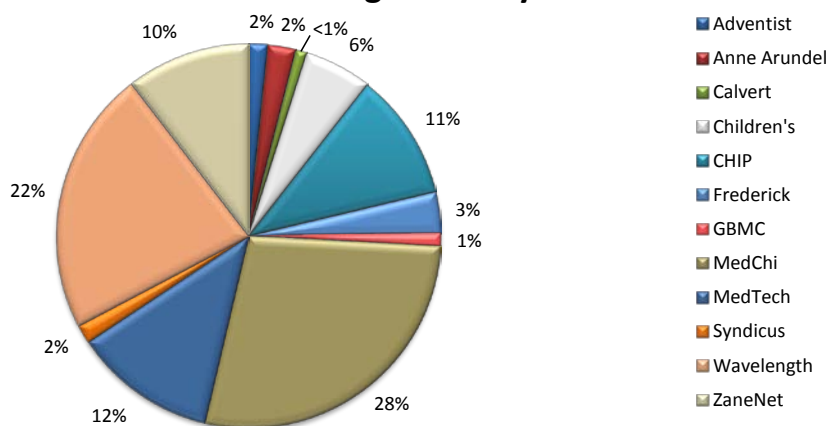
Maryland REC Progress - Milestone 2 Percent PCPs Live on an EHR by MSO

Total PCPs live on an EHR: 1,376



Maryland REC Progress - Milestone 3 Percent PCPs Achieved Meaningful Use by MSO

Total PCPs achieved meaningful use: 950



Key Terms:

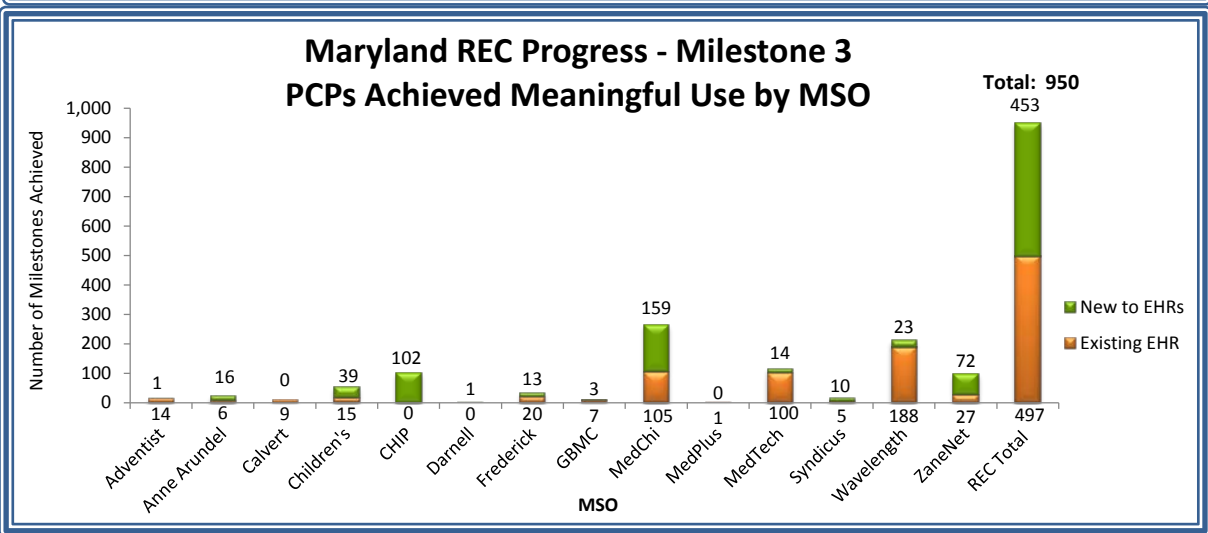
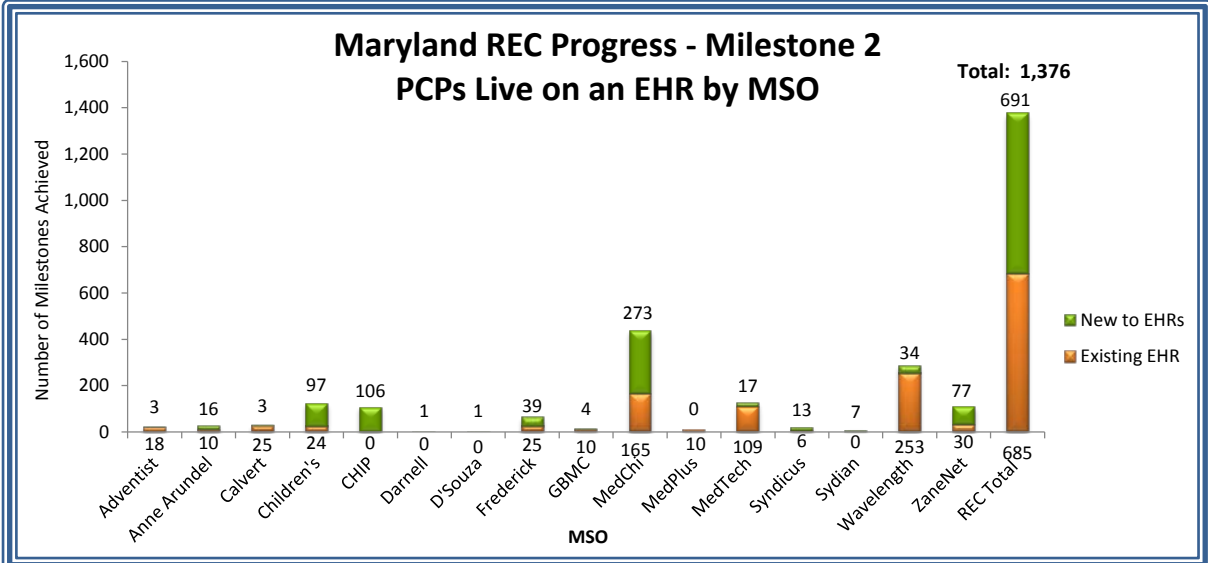
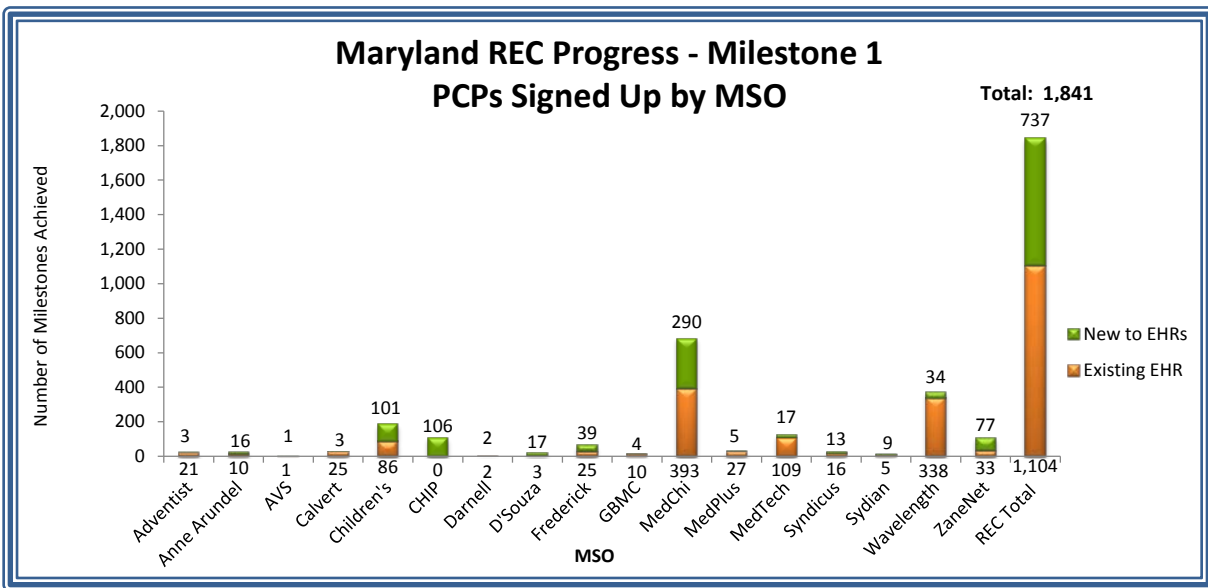
REC: The Regional Extension Center (REC) provides technical assistance to priority primary care providers (PCPs) in adopting and using an electronic health record (EHR)

Milestone 1: A PCP that has signed a participation agreement with a management service organization (MSO)

Milestone 2: A PCP that has adopted an EHR and is using certain functionalities of the system

Milestone 3: A PCP that has achieved meaningful use defined by the Centers for Medicare & Medicaid Services

Primary care provider: Primary-care providers in individual and small group practices (fewer than 10 physicians and/or other health care professionals with prescriptive privileges) primarily focused on primary care; and physicians, physician assistants, or nurse practitioners who provide primary care services in public and critical access hospitals, community health centers, rural health clinics, and in other settings that predominantly serve uninsured, underinsured, and medically underserved populations



Key Terms:

REC: The Regional Extension Center (REC) provides technical assistance to priority primary care providers (PCPs) in adopting and using an electronic health record (EHR)

Milestone 1: A PCP that has signed a participation agreement with a management service organization (MSO)

Milestone 2: A PCP that has adopted an EHR and is using certain functionalities of the system

Milestone 3: A PCP that has achieved meaningful use defined by the Centers for Medicare & Medicaid Services

Primary care provider: Primary-care providers in individual and small group practices (fewer than 10 physicians and/or other health care professionals with prescriptive privileges) primarily focused on primary care; and physicians, physician assistants, or nurse practitioners who provide primary care services in public and critical access hospitals, community health centers, rural health clinics, and in other settings that predominantly serve uninsured, underinsured, and medically underserved populations

Hospital Data Submission and Use

Count	Hospital	Current Status of Data Submission			Use of Services		
		Laboratory Reports	Radiology Reports	Transcribed Documents	Portal Live	Portal - Single Sign On*	ENS
1	Anne Arundel Medical Center	Mar-12	Mar-12	43	Jul-12	8	Sep-13
2	Atlantic General Hospital	Jun-11	Jun-11	Jun-11	Mar-12	8	20
3	Baltimore Washington Medical Center	Apr-14	Jan-14	43	Mar-12	8	20
4	Bon Secours Baltimore Health System	Feb-13	Feb-13	Feb-14	Jan-13	8	20
5	Calvert Memorial Hospital	Dec-12	Dec-12	Dec-12	Feb-13	8	20
6	Carroll Hospital Center	May-12	Apr-12	Apr-12	Jul-12	8	20
7	Doctors Community Hospital	Sep-12	Sep-13	Dec-13	Apr-13	8	Jun-13
8	Edward McCready Memorial Hospital	Aug-12	43	43	Feb-14	8	20
9	Fort Washington Medical Center	Sep-12	Mar-12	May-12	Sep-12	8	20
10	Frederick Memorial Hospital	Mar-12	Dec-11	43	Jul-12	8	20
11	Garrett County Memorial Hospital	Jun-11	Apr-12		Jan-14	8	20
12	Greater Baltimore Medical Center	Nov-12	Sep-12	Sep-12	Jun-12	8	20
13	Harford Memorial Hospital	Jul-12	Jul-12	Jul-12	Aug-12	8	20
14	Holy Cross Hospital	Sep-10	Sep-10	Sep-10	Dec-11	8	20
15	Howard County General Hospital	Feb-12	Nov-11	Nov-11	Mar-12	8	20
16	Johns Hopkins Bayview Medical Center	43	Feb-12	Jul-12	Apr-12	8	Mar-14
17	Johns Hopkins Hospital	43	Dec-11	May-12	Jul-12	8	20
18	Laurel Regional Hospital	43	43	Jul-12	Sep-13	8	20
19	MedStar Franklin Square Medical Center	Oct-11	Oct-11	Nov-12	Jul-12	Apr-13	Jan-14
20	MedStar Good Samaritan Hospital	Oct-11	Oct-11	Nov-12	Jun-12	Apr-13	20
21	MedStar Harbor Hospital	Oct-11	Sep-12	Nov-12	Mar-12	Apr-13	Aug-12
22	MedStar Montgomery Medical Center	Mar-13	Apr-11	Apr-11	Dec-11	Apr-13	20
23	MedStar Southern Maryland Hospital Center	43	Jul-11	Nov-11	Feb-13	8	20
24	MedStar St. Mary's Hospital	Jun-12	Mar-12	Dec-12	Jun-13	8	20
25	MedStar Union Memorial Hospital	Oct-10	Oct-10	Nov-12	May-12	Apr-13	20
26	Mercy Medical Center	43	Nov-12	43	Aug-12	8	20
27	Meritus Medical Center	Jul-12	Jul-12	Jul-12	Sep-12	8	20
28	Northwest Hospital Center	Dec-11	Dec-11	Aug-12	Sep-12	8	20
29	Peninsula Regional Medical Center	43	43	43	Sep-13	8	20
30	Prince George's Hospital Center	43	43	Jul-12	Apr-13	8	20
31	Shady Grove Adventist Hospital	Nov-11	Dec-10	Dec-11	Dec-11	8	Sep-13
32	Sinai Hospital	Dec-11	Dec-11	Aug-12	Sep-12	8	20
33	St. Agnes Hospital	Feb-12	Feb-12	Feb-12	Dec-12	8	20
34	Suburban Hospital	Oct-10	Oct-10	Oct-10	Sep-11	8	20
35	Union Hospital Cecil County	Aug-11	Sep-11	Sep-11	Sep-12	8	20
36	University of Maryland Charles Regional Medical Center	43	Apr-14	Apr-14	Jan-13	8	20
37	University of Maryland Medical Center	Mar-14	Jan-14	Jul-12	Jul-12	8	20
38	University of Maryland Medical Center Midtown Campus	43	Apr-13	Apr-13	Feb-13	8	20
39	University of Maryland Rehabilitation & Orthopedic Institute	43	Jan-14	Jul-12	Feb-14	8	20
40	University of Maryland Shore Medical Center at Chestertown	43	43	43	Mar-13	8	20
41	University of Maryland Shore Medical Center at Dorchester	43	43	43	Jan-14	8	20
42	University of Maryland Shore Medical Center at Easton	43	43	43	Oct-13	8	20
43	University of Maryland St. Joseph Medical Center	May-12	May-12	Feb-14	May-12	8	Aug-12
44	University of Maryland Upper Chesapeake Health	Jul-12	Jul-12	Jul-12	Aug-12	8	20
45	Washington Adventist Hospital	Nov-11	Dec-10	Dec-10	Apr-11	8	20
46	Western Maryland Health System	Mar-11	Mar-11	Feb-12	Jan-11	8	20

Key	Total Number of Hospitals in Current Status			Total Number of Hospitals Using Services		
	Laboratory Reports	Radiology Reports	Transcribed Documents	Portal	Portal - SSO	ENS
Not Live (months in current status)	13	7	9	0	41	39
Data Quality Assurance & Monitoring (months in current status) <i>Hospitals standardizing and mapping data for transmission</i>	0	0	0	N/A	N/A	N/A
Live <i>The number of hospitals that have successfully completed the above listed activities and the date the hospital went live</i>	33	39	36	46	5	7
No plans to provide data feed	0	0	1	N/A	N/A	N/A

*Note: Pilot for Single Sign On to Portal launched in April 2013 and offered to all hospitals starting in September 2013

CRISP Portal, ENS & PDMP Adoption by Facility

Count	Organization	Type	Portal Participation Agreement	Training*	Portal Live*	ENS Live*	PDMP Access
1	Aberdeen Family Practice	Ambulatory		Jan-14			Jan-14
2	Absolute Care of Baltimore	Ambulatory	Feb-14	Feb-14	Feb-14	Apr-14	Feb-14
3	Access Carroll	Ambulatory		Feb-14			Feb-14
4	Access Family Practice	Ambulatory		Jan-14			Jan-14
5	Accokeek Drug and Health Care Inc.	Pharmacy		Nov-13			Nov-13
6	Achor Care Pharmacy	Pharmacy		Jan-14			Jan-14
7	Addiction Treatment Services	Ambulatory		Apr-14			Apr-14
8	Advanced Diagnostic Radiology	Radiology	Mar-12				
9	Advanced Internal Medicine	Ambulatory	Jan-13	Jan-13	Feb-14		Feb-14
10	Advanced Interventional Pain & Sports Medicine Center	Ambulatory		Apr-14			Apr-14
11	Advanced Medical Care	Ambulatory	Apr-14	Apr-14	Apr-14		Apr-14
12	Advanced Pain Medicine Institute	Ambulatory		Mar-14			Apr-14
13	Advanced Primary and Geriatric Care	Ambulatory	Feb-14				
14	Advanced Radiology	Radiology	Sep-10	Mar-12	Mar-12		
15	Advanced Spine and Pain	Ambulatory		Jan-14			Jan-14
16	Adventist Healthcare	Health System	Nov-10	Oct-12			
17	Adventist Medical Group - Medical Faculty Associates	Ambulatory	Adventist Healthcare	Feb-14	Feb-14		Feb-14
18	AGHS Berlin Primary Care	Ambulatory	Atlantic General Hospital	Jun-13	Jun-13		
19	AGHS Townsend Medical Center	Ambulatory	Atlantic General Hospital				
20	Airpark Primary Care	Ambulatory	Nov-13	Dec-13	Dec-13		Dec-13
21	Allan J. Chircus, M.D.	Ambulatory		Apr-14			Apr-14
22	All Day Medical Care Clinic	Ambulatory	Aug-13	Sep-13	Sep-13		Mar-14
23	Allegany County Health Department	Government Agency		Apr-14			Apr-14
24	Allegany Health Nursing and Rehabilitation	Ambulatory	Mar-12				
25	Allegheny Surgical Associates	Ambulatory	Sep-11				
26	Allergy & Asthma Associates	Ambulatory	Apr-14	Apr-14			Apr-14
27	Alliance Inc.	Ambulatory	Sep-13	Mar-14	Mar-14		Mar-14
28	All Walks of Life	Ambulatory	Sep-13	Apr-14	Apr-14		Apr-14
29	Alternative Primary Care	Ambulatory	May-12				
30	Altmed Medical Center	Ambulatory		Jan-14			Jan-14
31	Ambulatory Care Pharmacy - Medical Center	Pharmacy		Nov-13			Nov-13
32	Ambulatory Care Pharmacy - Shady Grove	Pharmacy		Oct-13			Nov-13
33	AME Pharmacy, LLC	Pharmacy		Apr-14			Apr-14
34	American Radiology	Radiology	Sep-10	Dec-12	Dec-12		
35	American Spine	Ambulatory		Dec-13			Dec-13
36	Amerigroup	Payor	Nov-12			Feb-13	
37	Andrew T. Gergely, M.D. & Associates, L.L.C.	Ambulatory		Apr-14			Apr-14
38	Annapolis Center for Integrative Medicine	Ambulatory	Sep-13	Aug-13	Sep-13		
39	Annapolis Internal Medicine	Ambulatory	Jul-13	Dec-13	Dec-13		Dec-13
40	Annapolis Neurology Associates	Ambulatory	Nov-13	Nov-13	Dec-13		Nov-13
41	Annapolis Primary Care	Ambulatory	Sep-13	Aug-13			
42	Annapolis Rheumatology Associates	Ambulatory		Apr-14			Apr-14
43	Anne Arundel County Health Department	Government Agency	Aug-13	Apr-14	Apr-14		Apr-14
44	Anne Arundel HealthCare Enterprises, Inc.	Ambulatory	Sep-11	Jun-13	Jun-13		
45	Anne Arundel Medical Center	Hospital	Sep-11	Jul-12	Jul-12	Sep-13	Nov-13
46	Anne Arundel Medical Center Cancer Registry	Ambulatory	Anne Arundel Medical Center			Jun-13	
47	Anne Arundel Physician Group	Ambulatory	Jul-13				
48	Anne Arundel Urology	Ambulatory	Apr-13	Mar-13	Apr-13		Nov-13
49	Anthony & Banerjee MD PA	Ambulatory	Feb-13	Feb-13	Mar-13		
50	Apple Discount Drugs	Pharmacy	Oct-12	Oct-12	Oct-12		Nov-13
51	Apple Discount Drugs #4	Pharmacy		Jan-14			Jan-14
52	Apple Infusion	Pharmacy		Jan-14			Jan-14

CRISP Portal, ENS & PDMP Adoption by Facility

Count	Organization	Type	Portal Participation Agreement	Training*	Portal Live*	ENS Live*	PDMP Access
53	Arcola Health and Rehab Center	Long Term Care	Dec-11	Mar-12			
54	Arnold Professional Pharmacy	Pharmacy		Jan-14			Jan-14
55	Arthritis & Rheumatism Associates	Ambulatory	Feb-12	Mar-12	Mar-12		Jan-14
56	Arundel Lodge	Ambulatory	Aug-13	Nov-13	Nov-13	Nov-13	
57	Arundel Medical Group, Inc.	Ambulatory		Apr-14			Apr-14
58	Arundel Mills Pharmacy	Pharmacy		Jan-14			Jan-14
59	Arundel Pharmacy	Pharmacy		Feb-14			Feb-14
60	Aspen Day Treatment	Ambulatory		Apr-14			Apr-14
61	Aspire Wellness Center, Inc	Ambulatory		Apr-14			Apr-14
62	Associates in Cardiology	Ambulatory	Aug-11	Dec-11	Sep-13		Nov-13
63	Atlantic General Hospital	Hospital	Aug-11	Mar-12	Mar-12		
64	Atlantic Orthopedic Specialists	Ambulatory		Feb-14			Mar-14
65	Austin Pharmacy & Medical Supplies	Pharmacy	Feb-14	Feb-14			Feb-14
66	Avalon Professional Pharmacy	Pharmacy		Feb-14			Feb-14
67	Baltimore Highlands Pharmacy	Pharmacy		Mar-14			Mar-14
68	Baltimore Medical System, Inc.	FQHC	Oct-13	Oct-13	Oct-13	Nov-13	Nov-13
69	Baltimore Medical Systems- Belair - Edison Family Health	Ambulatory	Baltimore Medical System, Inc.	Mar-14	Mar-14		Mar-14
70	Baltimore Medical Systems Inc. - Fleet Street	Ambulatory	Baltimore Medical System, Inc.	Mar-14	Mar-14		Mar-14
71	Baltimore Medical Systems Inc - Matilda Koval Medical Center	Pharmacy	Baltimore Medical System, Inc.	Apr-14			Apr-14
72	Baltimore Neurosurgery and Spine Center	Ambulatory	Oct-11	Feb-14			Mar-14
73	Baltimore Pain Relief Center - White Marsh	Ambulatory	Apr-14	Apr-14			Apr-14
74	Baltimore VAMCS, Loch Raven	Hospital		Apr-14			Apr-14
75	Baltimore Washington Medical Center	Hospital	University of Maryland Medical System	Mar-12	Mar-12		Nov-13
76	Bay Area Orthopedics	Ambulatory		Mar-14			Mar-14
77	Bay Crossing Family Medicine	Ambulatory	Apr-13	May-13	May-13	Jun-13	Dec-13
78	Bay Hundred Medical Center	FQHC	Dec-13	Dec-13	Dec-13		
79	Bayside Family Practice, LLC	Ambulatory	Nov-13	Feb-14	Feb-14	Dec-13	Feb-14
80	Bayside Internal Medicine	Ambulatory		Feb-14			Feb-14
81	Bayside Primary Care	Ambulatory		Apr-14			Apr-14
82	Bayview Care Center	Long Term Care	Aug-11	Apr-12	Apr-12		
83	Bayview Pharmacy	Pharmacy		Apr-14			Apr-14
84	Bel Air Center for Addictions	Ambulatory		Jan-14			Jan-14
85	Benjamin Lee MD	Ambulatory		Apr-14			Apr-14
86	Bergand Group	Ambulatory		Mar-14			Mar-14
87	Bethesda Medical Associates	Ambulatory	Jun-11	Dec-11	Jan-12		Jan-14
88	Betty Toloria Braswell MD	Ambulatory		Jan-14			Jan-14
89	BH Health Services, Inc.	Ambulatory	Apr-13	May-13	May-13		Nov-13
90	Bich T. Duong MD	Ambulatory		Apr-14			Apr-14
91	Blakeslee and Eichelberger, LLC	Ambulatory		Apr-14			Apr-14
92	Blue Heron Medical Group, LLC	Ambulatory		Apr-14			Apr-14
93	Bon Secours Hospital	Hospital	Jan-12	Jan-13	Jan-13		Nov-13
94	Bowie Health Center	Ambulatory	Dimensions Health	Aug-13	Jul-13		Nov-13
95	Bowie Internal Medicine	Ambulatory	May-12	May-12	May-12		
96	Braddock Medical Group	Ambulatory		Feb-14			Feb-14
97	Braddock Oncology Associates	Radiology	Jan-11	Jan-13	Apr-13		
98	Bravo	Payor	Dec-12			Dec-12	
99	Bravo Health Advanced Care Center	Ambulatory	Feb-13	Feb-13	Mar-13		Nov-13
100	Brenda C. Scribner MD PA	Ambulatory		Apr-14			Apr-14
101	Broadmead Medical Services	Ambulatory	Apr-12				
102	Broadneck Pharmacy	Pharmacy		Oct-13			Nov-13
103	Brookville Pharmacy - Brooksville	Pharmacy		Mar-14			Mar-14
104	Bruce S. Rosenblum MD PC	Ambulatory		Feb-14			Feb-14

CRISP Portal, ENS & PDMP Adoption by Facility

Count	Organization	Type	Portal Participation Agreement	Training*	Portal Live*	ENS Live*	PDMP Access
105	Brunswick Pharmacy	Pharmacy		Feb-14			Feb-14
106	Burt Littman, M.D.	Ambulatory		Feb-14			Feb-14
107	Calvert County Health Department	Government Agency		Jan-14			Jan-14
108	Calvert County Nursing Center	Long Term Care	Feb-12				
109	Calvert Family Practice Associates, PA	Ambulatory		Apr-14			Apr-14
110	Calvert Internal Medicine Group	Ambulatory	Mar-12	Jul-12	Jul-12	Oct-12	Nov-13
111	Calvert Manor Healthcare	Long Term Care	Jun-12	Jul-12	Jul-12		
112	Calvert Memorial Hospital	Hospital	Aug-11	Jan-13	Feb-13		Nov-13
113	Calvert Physician Associates	Ambulatory		Apr-14			Apr-14
114	Cambridge Pediatrics, LLC	Ambulatory	Feb-12	Mar-12	Mar-12	Jun-13	Apr-14
115	Cancer Care Center of Frederick	Ambulatory	Mar-12	Mar-12	Mar-12		
116	Cape Drugs	Pharmacy		Jan-14			Jan-14
117	Capital Internal Medicine	Ambulatory		Apr-14			Apr-14
118	Capital Primary Care	Ambulatory	Apr-13				
119	Cardiovascular Specialists of Central MD	Ambulatory	Aug-11	Nov-11			
120	Care Connection Inc.	Ambulatory	Jul-13	Aug-13			
121	Carefirst	Payor	Jul-13			Nov-13	
122	Caroline Nursing and Rehab	Long Term Care	Jan-12				
123	Carroll Family Medicine	Ambulatory	Oct-12				
124	Carroll Health Group	Ambulatory	Aug-11	Jan-13	Jan-13		
125	Carroll Hospital Center	Hospital	Aug-11	Jul-12	Jul-12		Nov-13
126	Carroll Mental Health Care	Ambulatory		Apr-14			Apr-14
127	Catholic Charities Child & Family Services	Ambulatory	Sep-13				
128	Catholic Charities of Baltimore	Ambulatory		Mar-14			Mar-14
129	Catonsville Pharmacy	Pharmacy		Feb-14			Feb-14
130	CBHS - Columbia	FQHC	Chase Brexton Health Services	Aug-13	Oct-13		Feb-14
131	CBHS - Easton	FQHC	Chase Brexton Health Services	Jul-13	Jul-13		Nov-13
132	CBHS - MICA Wellness Center	FQHC	Chase Brexton Health Services	Jun-13	Jul-13		
133	CBHS - Mt Vernon Center	FQHC	Chase Brexton Health Services	Sep-13	Oct-13		Mar-14
134	CBHS - Randallstown	FQHC	Chase Brexton Health Services	Jun-13	Jul-13		Nov-13
135	CCI - Franklin Park	Ambulatory	Community Clinics Inc	Mar-14	Mar-14		
136	CCI - Gaithersburg	Ambulatory	Community Clinics Inc	Apr-14	Apr-14		Apr-14
137	CCI - Silver Spring	Ambulatory	Community Clinics Inc	Mar-13	May-13		Nov-13
138	CCI - Takoma Park	Ambulatory	Community Clinics Inc	Mar-14	Mar-14		Mar-14
139	Cecil County Health Department	Government Agency	Dec-12				
140	Centennial Medical Group	Ambulatory	May-13	Jun-13	Jun-13	Jun-13	Nov-13
141	Center for Addiction Medicine	Ambulatory		Feb-14			Feb-14
142	Center for Pain and Rehab	Ambulatory		Jan-14			Jan-14
143	Center for Pelvic Pain in Annapolis	Ambulatory		Feb-14			Feb-14
144	Center for Sleep and Wake Disorders	Ambulatory	Jan-11				
145	Central Maryland Urology Associates	Ambulatory	Nov-12	Nov-12	Nov-12		
146	Centreville Family Medicine	Ambulatory	Sep-11	Aug-13			
147	Channel Marker Inc.	Ambulatory	Nov-13			Jan-14	
148	Chapel View Family Care	Ambulatory	Apr-13	Jul-13	Aug-13	Mar-14	
149	Charles A. Haile, M.D.	Ambulatory	Mar-14				
150	Charlotte Hall Veterans Home	Ambulatory	Nov-12	Nov-12	Nov-12		Nov-13
151	Charter Internal Medicine, LLC	Ambulatory	Mar-13	Mar-13	Mar-13		
152	Chase Brexton Health Services	FQHC	Apr-13	Jun-13	Jul-13	Jun-13	Nov-13
153	Chase Brexton Health Services Pharmacy	Pharmacy	Chase Brexton Health Services	Apr-14	Apr-14		Apr-14
154	Chase Brexton Pharmacy Columbia	Pharmacy	Chase Brexton Health Services	Apr-14	Apr-14		Apr-14

CRISP Portal, ENS & PDMP Adoption by Facility

Count	Organization	Type	Portal Participation Agreement	Training*	Portal Live*	ENS Live*	PDMP Access
155	Chesapeake Oncology-Hematology Associates	Ambulatory		Mar-14			Mar-14
156	Chesapeake Otolaryngology Associates	Ambulatory	Jul-13	Aug-13	Sep-13		Nov-13
157	Chesapeake Potomac Regional Cancer Center	Ambulatory	Mar-12	Jul-12	Jul-12		
158	Chesapeake Primary Care Group	Ambulatory		Jan-14			Jan-14
159	Children's Medical Group	Ambulatory	May-12	Jul-12	Jul-12		
160	Choice Pharmacy	Pharmacy		Mar-14			Mar-14
161	Choptank Community Health Services, Inc.	FQHC	Dec-13	Nov-13	Dec-13		Dec-13
162	Chukwuma Ebo, M.D.	Ambulatory		Feb-14			Feb-14
163	Chul S. Kwon, M.D.	Ambulatory		Mar-14			Mar-14
164	Citizens Care & Rehabilitation Center	Long Term Care	May-13				
165	Citizens Pharmacy Services	Pharmacy		Feb-14			Feb-14
166	City Pharmacy of Elkton Inc	Pharmacy		Mar-14			Mar-14
167	Clear Spring Pharmacy	Pharmacy		Jan-14			Jan-14
168	Clinical Associates	Ambulatory	May-13	Jun-13	Jul-13	Jan-14	Nov-13
169	Clinical Associates - GBMC Physicians' Pavilion	Ambulatory	Clinical Associates	Jun-13	Apr-13		
170	Clinical Associates - Reisterstown	Ambulatory	Clinical Associates	Mar-14	Mar-14		
171	Clinical Associates - Rotunda	Ambulatory	Clinical Associates	Feb-14			
172	Clinical Associates- Saint Joseph Professional Center Building	Ambulatory	Clinical Associates				
173	Clinical Associates - The Quarry	Ambulatory	Clinical Associates				
174	Clinical Associates - Towson	Ambulatory	Clinical Associates	Feb-14	Feb-14		
175	Clinical Associates - Woodholme	Ambulatory	Clinical Associates				
176	Coastal Drug	Pharmacy		Apr-14			Apr-14
177	Collingswood Nursing and Rehabilitation Center	Long Term Care	Jul-13	Jan-14	Jan-14		
178	Columbia Medical Practice	Ambulatory	Feb-13	Sep-13	Sep-13	Apr-13	Nov-13
179	Community Care Rx	Pharmacy		Mar-14			Mar-14
180	Community Clinics Inc	FQHC	Apr-13	Jul-12	Feb-14	Dec-13	Feb-14
181	Community Pharmacy	Pharmacy		Feb-14			Feb-14
182	Community Pharmacy - Baltimore	Pharmacy		Feb-14			Feb-14
183	Community Radiology Associates	Radiology	Sep-10	Dec-11	Dec-11		
184	Comprehensive Pain Center	Ambulatory		Mar-14			Mar-14
185	Comprehensive Primary Care	Ambulatory	Aug-12	Jun-12	Nov-12	Nov-13	Nov-13
186	Comprehensive Women's Health	Ambulatory	Jul-12	Jul-12	Jul-12		Mar-14
187	Contact Lens Associates	Ambulatory	Jun-13	Jun-13	Sep-13		
188	Cornerstone Montgomery	Ambulatory	Jul-12	Sep-12	Sep-12		
189	Cornerstone Pain & Restoration	Ambulatory		Apr-14			Apr-14
190	Costco Pharmacy	Pharmacy		Mar-14			Mar-14
191	Costco Pharmacy #1000	Pharmacy		Feb-14			Feb-14
192	Costco Pharmacy #1039	Pharmacy		Apr-14			Apr-14
193	Costco Pharmacy #1078	Pharmacy		Feb-14			Feb-14
194	Costco Pharmacy #1124	Pharmacy		Feb-14			Feb-14
195	Costco Pharmacy #203	Pharmacy		Jan-14			Jan-14
196	Costco Pharmacy #208	Pharmacy		Jan-14			Jan-14
197	Costco Pharmacy #325	Pharmacy		Feb-14			Feb-14
198	Costco Pharmacy #330	Pharmacy		Feb-14			Feb-14
199	Costco Wholesale #213	Pharmacy		Feb-14			Feb-14
200	Costco Wholesale #214	Pharmacy		Feb-14			Feb-14
201	Courtland Gardens	Long Term Care	LifeBridge Health				
202	Crain Medical PA	Ambulatory		Apr-14			Apr-14
203	Crain Towers Pharmacy	Pharmacy		Jan-14			Jan-14
204	Cranberry Medical Clinic	Ambulatory		Mar-14			Mar-14
205	Crisfield Clinic	Ambulatory		Jan-14			Jan-14
206	Crofton Internal Medicine	Ambulatory		Jan-14			Jan-14

CRISP Portal, ENS & PDMP Adoption by Facility

Count	Organization	Type	Portal Participation Agreement	Training*	Portal Live*	ENS Live*	PDMP Access
207	Crossroads Community Inc.	Ambulatory	Feb-14				
208	Crossroads Medical Associates	Ambulatory	Jan-14	Jan-14	Feb-14	Apr-14	Feb-14
209	Cumberland Valley Family Medicine	Ambulatory		Apr-14			Apr-14
210	CVS Pharmacy #10203	Pharmacy		Apr-14			Apr-14
211	CVS Pharmacy #1177	Pharmacy		Mar-14			Mar-14
212	CVS Pharmacy #1330	Pharmacy		Apr-14			Apr-14
213	CVS Pharmacy #1431	Pharmacy		Apr-14			Apr-14
214	CVS Pharmacy #1435	Pharmacy		Mar-14			Apr-14
215	CVS Pharmacy #1440	Pharmacy		Apr-14			Apr-14
216	CVS Pharmacy #1442	Pharmacy		Apr-14			Apr-14
217	CVS Pharmacy #1445	Pharmacy		Apr-14			Apr-14
218	CVS Pharmacy #1446	Pharmacy		Apr-14			Apr-14
219	CVS Pharmacy #1447	Pharmacy		Mar-14			Mar-14
220	CVS Pharmacy #1449	Pharmacy		Mar-14			Apr-14
221	CVS Pharmacy #1451	Pharmacy		Mar-14			Mar-14
222	CVS Pharmacy #1453	Pharmacy		Apr-14			Apr-14
223	CVS Pharmacy #1458	Pharmacy		Mar-14			Mar-14
224	CVS Pharmacy #1459	Pharmacy		Apr-14			Apr-14
225	CVS Pharmacy #1461	Pharmacy		Mar-14			Mar-14
226	CVS Pharmacy #1465	Pharmacy		Apr-14			Apr-14
227	CVS Pharmacy #1468	Pharmacy		Apr-14			Apr-14
228	CVS Pharmacy #1470	Pharmacy		Apr-14			Apr-14
229	CVS Pharmacy #1472	Pharmacy		Apr-14			Apr-14
230	CVS Pharmacy #1475	Pharmacy		Apr-14			Apr-14
231	CVS Pharmacy #1476	Pharmacy		Mar-14			Apr-14
232	CVS Pharmacy #1479	Pharmacy		Mar-14			Mar-14
233	CVS Pharmacy #1484	Pharmacy		Mar-14			Mar-14
234	CVS Pharmacy #1485	Pharmacy		Apr-14			Apr-14
235	CVS Pharmacy #1488	Pharmacy		Apr-14			Apr-14
236	CVS Pharmacy #1491	Pharmacy		Apr-14			Apr-14
237	CVS Pharmacy #1492	Pharmacy		Mar-14			Mar-14
238	CVS Pharmacy #1495	Pharmacy		Mar-14			Mar-14
239	CVS Pharmacy #1496	Pharmacy		Apr-14			Apr-14
240	CVS Pharmacy #1497	Pharmacy		Apr-14			Apr-14
241	CVS Pharmacy #1498	Pharmacy		Apr-14			Apr-14
242	CVS Pharmacy #1499	Pharmacy		Mar-14			Mar-14
243	CVS Pharmacy #1500	Pharmacy		Mar-14			Mar-14
244	CVS Pharmacy #1503	Pharmacy		Apr-14			Apr-14
245	CVS Pharmacy #1504	Pharmacy		Apr-14			Apr-14
246	CVS Pharmacy #1505	Pharmacy		Apr-14			Apr-14
247	CVS Pharmacy #1506	Pharmacy		Apr-14			Apr-14
248	CVS Pharmacy #1510	Pharmacy		Apr-14			Apr-14
249	CVS Pharmacy #1511	Pharmacy		Apr-14			Apr-14
250	CVS Pharmacy #1514	Pharmacy		Apr-14			Apr-14
251	CVS Pharmacy #1518	Pharmacy		Mar-14			Mar-14
252	CVS Pharmacy #1521	Pharmacy		Mar-14			Mar-14
253	CVS Pharmacy #1522	Pharmacy		Mar-14			Apr-14
254	CVS Pharmacy #1524	Pharmacy		Mar-14			Mar-14
255	CVS Pharmacy #1621	Pharmacy		Apr-14			Apr-14
256	CVS Pharmacy #169	Pharmacy		Apr-14			Apr-14
257	CVS Pharmacy #1735	Pharmacy		Apr-14			Apr-14
258	CVS Pharmacy #1790	Pharmacy		Jan-14			Jan-14
259	CVS Pharmacy #1795	Pharmacy		Apr-14			Apr-14
260	CVS Pharmacy #1797	Pharmacy		Mar-14			Mar-14
261	CVS Pharmacy #1800	Pharmacy		Apr-14			Apr-14
262	CVS Pharmacy #1831	Pharmacy		Apr-14			Apr-14
263	CVS Pharmacy #1880	Pharmacy		Apr-14			Apr-14
264	CVS Pharmacy #1881	Pharmacy		Mar-14			Mar-14
265	CVS Pharmacy #1964	Pharmacy		Mar-14			Mar-14
266	CVS Pharmacy #1973	Pharmacy		Apr-14			Apr-14
267	CVS Pharmacy #2010	Pharmacy		Apr-14			Apr-14

CRISP Portal, ENS & PDMP Adoption by Facility

Count	Organization	Type	Portal Participation Agreement	Training*	Portal Live*	ENS Live*	PDMP Access
268	CVS Pharmacy #2033	Pharmacy		Apr-14			Apr-14
269	CVS Pharmacy #2034	Pharmacy		Apr-14			Apr-14
270	CVS Pharmacy #2045	Pharmacy		Mar-14			Mar-14
271	CVS Pharmacy #2066	Pharmacy		Mar-14			Mar-14
272	CVS Pharmacy #2160	Pharmacy		Apr-14			Apr-14
273	CVS Pharmacy #2216	Pharmacy		Apr-14			Apr-14
274	CVS Pharmacy #2230	Pharmacy		Mar-14			Mar-14
275	CVS Pharmacy #2239	Pharmacy		Apr-14			Apr-14
276	CVS Pharmacy #2335	Pharmacy		Apr-14			Apr-14
277	CVS Pharmacy #2422	Pharmacy		Apr-14			Apr-14
278	CVS Pharmacy #244	Pharmacy		Mar-14			Mar-14
279	CVS Pharmacy #2455	Pharmacy		Apr-14			Apr-14
280	CVS Pharmacy #2499	Pharmacy		Mar-14			Mar-14
281	CVS Pharmacy #2531	Pharmacy		Mar-14			Mar-14
282	CVS Pharmacy #2549	Pharmacy		Mar-14			Mar-14
283	CVS Pharmacy #2775	Pharmacy		Mar-14			Mar-14
284	CVS Pharmacy #2778	Pharmacy		Apr-14			Apr-14
285	CVS Pharmacy #2779	Pharmacy		Apr-14			Apr-14
286	CVS Pharmacy #2865	Pharmacy		Mar-14			Mar-14
287	CVS Pharmacy #2883	Pharmacy		Apr-14			Apr-14
288	CVS Pharmacy #2956	Pharmacy		Mar-14			Mar-14
289	CVS Pharmacy #352	Pharmacy		Mar-14			Mar-14
290	CVS Pharmacy #3902	Pharmacy		Apr-14			Apr-14
291	CVS Pharmacy #4017	Pharmacy		Apr-14			Apr-14
292	CVS Pharmacy #4018	Pharmacy		Mar-14			Apr-14
293	CVS Pharmacy #4030	Pharmacy		Mar-14			Mar-14
294	CVS Pharmacy #4044	Pharmacy		Mar-14			Mar-14
295	CVS Pharmacy #4079	Pharmacy		Mar-14			Mar-14
296	CVS Pharmacy #4102	Pharmacy		Mar-14			Apr-14
297	CVS Pharmacy #4107	Pharmacy		Apr-14			Apr-14
298	CVS Pharmacy #4129	Pharmacy		Apr-14			Apr-14
299	CVS Pharmacy #4170	Pharmacy		Apr-14			Apr-14
300	CVS Pharmacy #4199	Pharmacy		Apr-14			Apr-14
301	CVS Pharmacy #4212	Pharmacy		Mar-14			Mar-14
302	CVS Pharmacy #4220	Pharmacy		Apr-14			Apr-14
303	CVS Pharmacy #4411	Pharmacy		Mar-14			Mar-14
304	CVS Pharmacy #4429	Pharmacy		Apr-14			Apr-14
305	CVS Pharmacy #5650	Pharmacy		Apr-14			Apr-14
306	CVS Pharmacy #5706	Pharmacy		Mar-14			Mar-14
307	CVS Pharmacy #5728	Pharmacy		Apr-14			Apr-14
308	CVS Pharmacy #5909	Pharmacy		Apr-14			Apr-14
309	CVS Pharmacy #5926	Pharmacy		Apr-14			Apr-14
310	CVS Pharmacy #6614	Pharmacy		Mar-14			Mar-14
311	CVS Pharmacy #6765	Pharmacy		Apr-14			Apr-14
312	CVS Pharmacy #6858	Pharmacy		Mar-14			Mar-14
313	CVS Pharmacy #7139	Pharmacy		Mar-14			Mar-14
314	CVS Pharmacy #7656	Pharmacy		Apr-14			Apr-14
315	CVS Pharmacy #7911	Pharmacy		Mar-14			Mar-14
316	CVS Pharmacy #8281	Pharmacy		Mar-14			Mar-14
317	Cyriac and Mundra MD PA	Ambulatory	Nov-13	Mar-14	Mar-14		Mar-14
318	Daljeet Singh Sidhu, MD	Pharmacy		Jan-14			Jan-14
319	Darlington Pharmacy	Pharmacy		Jan-14			Jan-14
320	Darmon Medical Services	Ambulatory		Apr-14			Apr-14
321	Darryl M. Coleman, M.D.	Ambulatory		Apr-14			Apr-14
322	David B. Harding, M.D.	Ambulatory	Feb-14	Mar-14			Mar-14
323	David R. McDuff, M.D.	Ambulatory		Feb-14			Feb-14
324	Dawn A. Broderick, M.D.	Ambulatory	Oct-13	Apr-14	Apr-14		Apr-14
325	DECALO Medical Group	Ambulatory		Mar-14			Mar-14
326	Deepak Seth , MD	Ambulatory	Jun-13				
327	Deep Creek Pharmacy	Pharmacy		Sep-13			Nov-13
328	Delmarva Pain Associates	Ambulatory		Feb-14			Feb-14

CRISP Portal, ENS & PDMP Adoption by Facility

Count	Organization	Type	Portal Participation Agreement	Training*	Portal Live*	ENS Live*	PDMP Access
329	Delmarva Pharmacy	Pharmacy		Jan-14			Jan-14
330	Demmy's Pharmacy LLC	Pharmacy		Mar-14			Mar-14
331	Dennis D. Dey, MD	Ambulatory		Apr-14			Apr-14
332	Denton Medical Center	FQHC	Dec-13	Dec-13	Dec-13		
333	Desai & Holmes, MD, LLC	Ambulatory	Feb-13	Feb-13	Feb-13		Nov-13
334	Desai Medical Center	Ambulatory	Feb-14				
335	Devlin Manor	Long Term Care	Mar-11				
336	DHMH - Office of Health Services	Government Agency	Dec-12			Feb-13	
337	Digestive Disease Associates	Ambulatory	Feb-12	Dec-12			
338	Dimensions Health	Health System	Jul-11				
339	Divine Internal Medicine LLC	Ambulatory		Apr-14			Apr-14
340	Dobin and Hoeck Internal Medicine	Ambulatory	Jul-12	Jul-12	Jul-12		Jan-14
341	Doctor's Express	Ambulatory		Apr-14			Apr-14
342	Doctors Community Hospital	Hospital	Oct-11	Apr-13	Apr-13	Jun-13	Nov-13
343	Doctors Express Pikesville	Ambulatory	Mar-14				
344	Doctors Regional Cancer Center	Ambulatory	Sep-12	Sep-12	Sep-12		
345	Dolph Druckman MD	Ambulatory		Apr-14			Apr-14
346	Donald Bousel, MD	Ambulatory	Jan-13	Apr-14	Apr-14		Apr-14
347	Douglas W. Heinrichs MD and Associates	Ambulatory		Jan-14			Jan-14
348	Downtown Baltimore Family Care	Ambulatory	Oct-13	Feb-13	Oct-13		Nov-13
349	Dr. David A Schwartz	Ambulatory	Jan-13	Jan-13	Jan-13		Nov-13
350	Dr. David Gar-El MD	Ambulatory	Apr-14	Apr-14	Apr-14		Apr-14
351	Dr. Jhansi R. Ganesan, MD	Ambulatory	Apr-13	Apr-13	Apr-13		Nov-13
352	Dr. Robert Welik	Ambulatory	Jul-11				
353	Dr. Robin Bissell	Ambulatory	Sep-13	Oct-13	Oct-13		Nov-13
354	Dr. Vinu Ganti	Ambulatory	Jun-13	Sep-13	Oct-13		Nov-13
355	Dragos Popescu, MD	Ambulatory	Dec-12	Dec-12	Dec-12		Nov-13
356	Drs. Edwards & Stephens, LLC	Ambulatory		Mar-14			Mar-14
357	Drs. Gehris, Jordan, Day and Associates, LLC	Ambulatory	Oct-12	Oct-12	Oct-12		
358	Drs. Schreiber and Kelsey	Ambulatory	May-13	Feb-14	Mar-14		Mar-14
359	Drs. Shanahan and Ferguson	Ambulatory	May-13	Jun-13	Jun-13		
360	Drug City Pharmacy	Pharmacy		Jan-14			Jan-14
361	Dulaney Valley Healthmart Pharmacy	Pharmacy		Apr-14			Apr-14
362	Dundalk Pediatric Associates, P.A.	Ambulatory	Apr-13	Apr-13	Apr-13		Nov-13
363	E. Pasmanik MD, LLC	Ambulatory	Feb-14	Feb-14			Feb-14
364	Eastern Avenue Health Solutions	Long Term Care	Nov-13	Dec-13			
365	Eastern Shore Medical Center	Ambulatory		Apr-14			Apr-14
366	Eastern Shore Pediatrics LLC	Ambulatory	May-13	Oct-13	Oct-13		Nov-13
367	Eastern Shore Primary Care	Ambulatory	Dec-13	Jan-14	Jan-14		Jan-14
368	Eastern Shore Rural Health System-Only Community Health Center	Ambulatory		Apr-14			Apr-14
369	Edge Medical Care PC	Ambulatory	Jun-13	Sep-13	Sep-13		Nov-13
370	Egle Nursing and Rehabilitation Center	Long Term Care	May-13	Jul-13	Jul-13	Jun-13	
371	Elkton Friendly Pharmacy	Pharmacy		Apr-14			Apr-14
372	Elkton Treatment Center	Ambulatory		Mar-14			Mar-14
373	Ellicott City Pediatric Associates	Ambulatory	Aug-13	Aug-13	Oct-13		
374	Emmitsburg Osteopathic Primary Care Center	Ambulatory	Nov-11	Nov-11	Nov-11		
375	Endoscopic Microsurgery Associates	Ambulatory	Oct-13				
376	Erickson Living	Long Term Care	Mar-12	Mar-12			
377	Evergreen Health Care	Ambulatory	Nov-13	Dec-13	Dec-13	Mar-14	
378	Express Care Urgent Care Center	Ambulatory		Apr-14			Apr-14
379	F. Caroline Define, MD	Ambulatory		Feb-14			Feb-14
380	Fairfax Family Practice	Ambulatory		Apr-14			Apr-14
381	Fairwood Spine and Pain Center	Ambulatory	Jun-13	Mar-14	Mar-14		
382	Falls Medical Specialists	Ambulatory	Sep-13	Sep-13	Oct-13		Mar-14
383	Family Care Associates	Ambulatory		Jan-14			Jan-14
384	Family Care of Easton	Ambulatory	Jul-12	Jul-12	Jul-12		
385	Family Healthcare of Germantown	Ambulatory	Jan-12	Jan-12	Jan-12	Mar-13	Nov-13

CRISP Portal, ENS & PDMP Adoption by Facility

Count	Organization	Type	Portal Participation Agreement	Training*	Portal Live*	ENS Live*	PDMP Access
386	Family Health Center	Ambulatory	MedStar	Nov-11	Nov-11	Sep-13	Nov-13
387	Family Health Centers of Baltimore	FQHC	Oct-13				
388	Family Medical Center	Ambulatory		Feb-14			Feb-14
389	Family Meds Inc	Pharmacy		Jan-14			Jan-14
390	Family Services	Ambulatory	Jun-12	Jun-12	Jun-12	Feb-14	Nov-13
391	Farragut Avenue Internal Medicine	Ambulatory	Nov-11	Nov-11	Nov-11		
392	Fassett Magee Health Center	FQHC	Dec-13	Dec-13	Dec-13		
393	Fast Track Urgent Care	Ambulatory	Nov-12	Oct-13	Oct-13		Nov-13
394	Federalsburg Medical Center	FQHC	Dec-13	Dec-13	Dec-13		
395	Femi Care Center	Ambulatory	Apr-14				
396	Fink's Pharmacy	Pharmacy		Feb-14			Feb-14
397	Finksburg Pharmacy	Pharmacy		Feb-14			Feb-14
398	Five Star Physician Services, LLC	Ambulatory	May-13	Aug-13	Sep-13		Nov-13
399	Foer Medical Arts Pharmacy-Rockledge Drive	Pharmacy		Jan-14			Jan-14
400	For All Seasons, Inc	Ambulatory		Apr-14			Apr-14
401	Forest Haven Nursing Home	Long Term Care	Sep-13	Oct-13	Oct-13		
402	Fort Washington Medical Center	Hospital	Sep-11	Aug-12	Sep-12		Nov-13
403	Foster Medical Care, LLC	Ambulatory		Jan-14			Jan-14
404	Foundation Schools	Ambulatory		Apr-14			Apr-14
405	Frederick County Health Department	Government Agency	Dec-12	Jan-14	Jan-14		Jan-14
406	Frederick Gastroenterology Associates	Ambulatory	Jul-13	Jul-13	Aug-13		
407	Frederick Memorial Hospital	Hospital	Jun-11	Jul-12	Jul-12		Jan-14
408	Frederick Primary Care Associates	Ambulatory	Sep-13	Jan-14	Jan-14	Nov-13	Jan-14
409	Frederick Spine and Rehab Center	Ambulatory	Feb-14	Jan-14			Feb-14
410	FutureCare Canton Harbor	Long Term Care	FutureCare Health and Management Corporation				
411	FutureCare Charles Village	Long Term Care	FutureCare Health and Management Corporation				
412	FutureCare Cherrywood	Long Term Care	FutureCare Health and Management Corporation				
413	FutureCare Chesapeake	Long Term Care	FutureCare Health and Management Corporation				
414	FutureCare Cold Spring	Long Term Care	FutureCare Health and Management Corporation				
415	FutureCare Health and Management Corporation	Long Term Care	Feb-14	Mar-14	Mar-14		Mar-14
416	FutureCare Homewood	Long Term Care	FutureCare Health and Management Corporation				
417	FutureCare Irvington	Long Term Care	FutureCare Health and Management Corporation				
418	FutureCare Lochearn	Long Term Care	FutureCare Health and Management Corporation				
419	FutureCare North Point	Long Term Care	FutureCare Health and Management Corporation				
420	FutureCare Old Court	Long Term Care	FutureCare Health and Management Corporation				

CRISP Portal, ENS & PDMP Adoption by Facility

Count	Organization	Type	Portal Participation Agreement	Training*	Portal Live*	ENS Live*	PDMP Access
421	FutureCare Pineview	Long Term Care	FutureCare Health and Management Corporation				
422	FutureCare Sandtown	Long Term Care	FutureCare Health and Management Corporation				
423	Garrett County Memorial Hospital	Hospital	Apr-11	Jan-14	Jan-14		Jan-14
424	Garrett Medical Group, P.A.	Ambulatory	Jun-12				
425	Garrett Surgical Group	Ambulatory	Jul-12				
426	Gateway Medical Center	Ambulatory		Apr-14			Apr-14
427	Geetha Subramaniam	Ambulatory		Mar-14			Mar-14
428	Genesis Cromwell Facility	Long Term Care	Genesis Healthcare	Feb-14	Feb-14		Feb-14
429	Genesis Franklin Woods	Long Term Care	Genesis Healthcare				
430	Genesis Healthcare	Long Term Care	Oct-13	Dec-13	Dec-13		Dec-13
431	Genesis Heritage Center	Long Term Care	Genesis Healthcare	Feb-14	Feb-14		
432	George C James, MD	Ambulatory		Apr-14			Apr-14
433	Georges Creek Pharmacy Inc	Pharmacy		Jan-14			Jan-14
434	Gerald Family Care	Ambulatory	Sep-11	Apr-13	Apr-13	Jan-13	
435	Giant Eagle Pharmacy #1841	Pharmacy		Jan-14			Jan-14
436	Giant Eagle Pharmacy #1842	Pharmacy		Apr-14			Apr-14
437	Giant Pharmacy #117	Pharmacy		Apr-14			Apr-14
438	Giant Pharmacy #129	Pharmacy		Mar-14			Mar-14
439	Giant Pharmacy #131	Pharmacy		Mar-14			Mar-14
440	Giant Pharmacy #146	Pharmacy		Feb-14			Feb-14
441	Giant Pharmacy #303	Pharmacy		Feb-14			Feb-14
442	Giant Pharmacy #304	Pharmacy		Mar-14			Mar-14
443	Giant Pharmacy #322	Pharmacy		Mar-14			Mar-14
444	Giant Pharmacy #325	Pharmacy		Feb-14			Feb-14
445	Giant Pharmacy #339	Pharmacy		Apr-14			Apr-14
446	Giant Pharmacy #344	Pharmacy		Apr-14			Apr-14
447	Giant Pharmacy #358	Pharmacy		Mar-14			Mar-14
448	Glade Valley Family Practice	Ambulatory		Jan-14			Jan-14
449	Glenwood Life Counseling Center	Ambulatory		Jan-14			Jan-14
450	Glick Psychiatry	Ambulatory		Feb-14			Feb-14
451	Go-Getters	Ambulatory	Aug-13	Aug-13	Sep-13	Nov-13	
452	Goldsboro Medical Center	FQHC	Dec-13	Dec-13	Dec-13		
453	Gordys Riverside Pharmacy Inc	Pharmacy		Apr-14			Apr-14
454	Greater Baltimore Medical Associates	Ambulatory	Jun-12	Nov-12	Nov-12	Aug-12	Jan-14
455	Greater Baltimore Medical Center	Hospital	Jan-10	Jun-12	Jun-12		Nov-13
456	Greater Baltimore Medical Center at Perry Hall	Ambulatory		Apr-14			Apr-14
457	Green Ridge Behavioral Health	Ambulatory		Jan-14			Jan-14
458	Green Spring Internal Medicine, LLC	Ambulatory	Feb-12	Feb-12	Feb-12	Apr-13	Nov-13
459	Gregg's Pharmacy Inc	Pharmacy		Apr-14			Apr-14
460	Gregory Pokrywka MD	Ambulatory		Feb-14			Feb-14
461	GS Surgical Services, LLC	Ambulatory	Jul-12	Mar-13	Apr-13		Nov-13
462	Gul G. Chablani, M.D.	Ambulatory	Jan-14				
463	Happy Harry's #11037	Pharmacy		Mar-14			Mar-14
464	Happy Harry's #11043	Pharmacy		Mar-14			Mar-14
465	Happy Harry's #11054	Pharmacy		Mar-14			Mar-14
466	Happy Harry's #11064	Pharmacy		Apr-14			Apr-14
467	Harford-Belair Community Mental Health	Ambulatory	Sep-13				
468	Harford Memorial Hospital	Hospital	Jan-12	Aug-12	Aug-12		Nov-13
469	Harford Pharmacy Inc	Pharmacy		Feb-14			Feb-14
470	Harriet Lane Clinic	Ambulatory		Jan-14			Jan-14
471	Health Care for the Homeless MD	FQHC	May-13	May-13	Oct-13	Mar-14	Nov-13
472	Health Matters Urgent Care	Ambulatory		Apr-14			Apr-14

CRISP Portal, ENS & PDMP Adoption by Facility

Count	Organization	Type	Portal Participation Agreement	Training*	Portal Live*	ENS Live*	PDMP Access
473	Healthy Steps	Ambulatory	Jan-12	Jan-12	Jan-12		
474	Hebrew Home of Greater Washington	Long Term Care	Apr-12	Apr-12	May-12		
475	Hereford Pharmacy Inc	Pharmacy		Mar-14			Mar-14
476	Hillendale Pharmacy	Pharmacy		Jan-14			Jan-14
477	Hollywood Medical Center	Ambulatory	Feb-14	Feb-14	Apr-14		Apr-14
478	Hollywood Pharmacy	Pharmacy		Mar-14			Mar-14
479	Holy Cross - Aspen Hill Health Center	Ambulatory	Jul-12	Jul-12	Aug-12		Nov-13
480	Holy Cross Employee Health	Ambulatory	Oct-11	Jan-09	Oct-11		
481	Holy Cross Health Center	Ambulatory	Nov-11	Nov-11	Nov-11		Nov-13
482	Holy Cross Home Health	Ambulatory	Oct-11				
483	Holy Cross Hospital	Hospital	Oct-11	Dec-11	Dec-11		Nov-13
484	Holy Cross - Silver Spring Health Center	Ambulatory	Nov-11	Nov-12	Nov-12		
485	HomeCare Maryland, LLC	Long Term Care	LifeBridge Health				
486	Hope Health Systems	Ambulatory	Nov-12	Oct-13	Oct-13		
487	Howard County General Hospital	Hospital	Aug-11	Mar-12	Mar-12		Nov-13
488	Howard County Health Department	Government Agency		Mar-14			Mar-14
489	Humanim	Ambulatory	Jul-13	Sep-13	Sep-13	Aug-13	
490	Ingleside at King's Farm	Long Term Care	May-13	Jun-13	Jun-13	Jun-13	Dec-13
491	Institutes for Behavior Resources	Ambulatory	Sep-13	Sep-13	Sep-13		Nov-13
492	Irina A. Skopets, MD, PA	Ambulatory	Sep-13	Sep-13	Oct-13		Nov-13
493	Irv Schindler DDS	Ambulatory		Apr-14			Apr-14
494	Jack D. Blaine, M.D	Ambulatory		Jan-14			Jan-14
495	Jai Medical Center	Ambulatory	Sep-13	Apr-14			Apr-14
496	Janjua Neurology MD PA	Ambulatory	Feb-13	Jan-13	Feb-13		
497	Jarrettsville Family Care	Ambulatory	Sep-12	Sep-12	Sep-12		Mar-14
498	Jarrettsville Pharmacy	Pharmacy		Feb-14			Feb-14
499	JCHIP Acute	Health System	Johns Hopkins Hospital				
500	JCHIP Community	Ambulatory	Johns Hopkins Hospital	Oct-13	Oct-13	Jul-13	
501	JCHIP KnownCAD	Health System	Johns Hopkins Hospital			Jun-13	
502	JHCP Annapolis	Ambulatory	Apr-12	Aug-12	Aug-12		
503	JHCP Bayview	Ambulatory	JHCP Annapolis				
504	JHCP Bowie	Ambulatory	JHCP Annapolis	Aug-12	Aug-12		Nov-13
505	JHCP Canton Crossing	Ambulatory	JHCP Annapolis	Jun-12	Jun-12	Sep-12	
506	JHCP Charles County	Ambulatory	JHCP Annapolis	Aug-12	Sep-12		
507	JHCP Cranberry Station	Ambulatory	JHCP Annapolis				
508	JHCP Downtown Bethesda	Ambulatory	JHCP Annapolis	Jul-12	Jul-12		
509	JHCP East Baltimore	Ambulatory	JHCP Annapolis	Aug-12	Aug-12		Nov-13
510	JHCP Frederick	Ambulatory	JHCP Annapolis	Aug-12	Aug-12		Apr-14
511	JHCP Fulton	Ambulatory	JHCP Annapolis	Jun-13	Jul-13		
512	JHCP Germantown	Ambulatory	JHCP Annapolis	Jul-13	Jul-13		
513	JHCP Glen Burnie	Ambulatory	JHCP Annapolis	Aug-12	Sep-12		Nov-13
514	JHCP Greater Dundalk	Ambulatory	JHCP Annapolis	Jul-12	Aug-12		Nov-13
515	JHCP Green Spring	Ambulatory	JHCP Annapolis	Aug-12	Aug-12		
516	JHCP Hager Park Health Center	Ambulatory	JHCP Annapolis				
517	JHCP Hagerstown	Ambulatory	JHCP Annapolis	May-12	May-12	Sep-12	
518	JHCP Heart Care - Bethesda	Ambulatory	JHCP Annapolis	Oct-13	Oct-13		Nov-13
519	JHCP Heart Care - Rockville	Ambulatory	JHCP Annapolis	Jul-12	Jul-12		Jan-14
520	JHCP Howard County	Ambulatory	JHCP Annapolis	Aug-12	Aug-12		
521	JHCP Kent Island	Ambulatory	JHCP Annapolis	Sep-12	Sep-12		
522	JHCP Laurel	Ambulatory	JHCP Annapolis	Aug-12	Aug-12		Nov-13
523	JHCP Laurel Health Center	Ambulatory	JHCP Annapolis				
524	JHCP Monocacy Valley Health Center	Ambulatory	JHCP Annapolis				
525	JHCP Montgomery Grove	Ambulatory	JHCP Annapolis	May-12	May-12	Sep-12	Nov-13
526	JHCP North Bethesda	Ambulatory	JHCP Annapolis	Jul-12	Jul-12		
527	JHCP OBGYN at Columbia	Ambulatory	JHCP Annapolis				
528	JHCP Odenton	Ambulatory	JHCP Annapolis	Aug-12	Aug-12		Apr-14
529	JHCP Water's Edge	Ambulatory	JHCP Annapolis	Jun-12	Jun-12	Sep-12	Nov-13
530	JHCP Westminster	Ambulatory	JHCP Annapolis	Aug-12	Sep-12		Nov-13

CRISP Portal, ENS & PDMP Adoption by Facility

Count	Organization	Type	Portal Participation Agreement	Training*	Portal Live*	ENS Live*	PDMP Access
531	JHCP White Marsh	Ambulatory	JHCP Annapolis	Aug-12	Aug-12		Nov-13
532	JHCP Wyman Park	Ambulatory	JHCP Annapolis	Jul-12	Jul-12	Sep-12	Nov-13
533	John M. Lee MD PA	Ambulatory	Oct-13	Oct-13	Nov-13		Nov-13
534	Johns Hopkins Bayview Medical Center	Hospital	Aug-11	Apr-12	Apr-12	Mar-14	Nov-13
535	Johns Hopkins Community Physicians	Ambulatory	Apr-12	Apr-12	Apr-12	Sep-12	Feb-14
536	Johns Hopkins HealthCare	Payor	Nov-12	May-13			
537	Johns Hopkins Healthcare Priority Partners	Payor	Nov-12			Jan-13	
538	Johns Hopkins Home Care	Long Term Care		Jan-14			Jan-14
539	Johns Hopkins Hospital	Hospital	Aug-11	Jul-12	Jul-12		Nov-13
540	Johns Hopkins Outpatient Pharmacy at the Arcade	Pharmacy		Jan-14			Jan-14
541	Johnson Family Pharmacy	Pharmacy		Mar-14			Mar-14
542	Johnston Family Medicine	Ambulatory	May-13	Mar-13	Jul-13		Nov-13
543	John Whittaker, LLC	Ambulatory		Mar-14			Mar-14
544	JP Clarke and Associates, LLC	Ambulatory		Apr-14			Apr-14
545	Julius Boateng, M.D.	Ambulatory	Feb-14				
546	Kaiser Permanente	Ambulatory	Mar-14	Jan-14	Jan-14		Jan-14
547	Kaiser Permanente Annapolis Pharmacy	Pharmacy	Kaiser Permanente	Apr-14			Apr-14
548	Kaiser Permanente Columbia Gateway	Ambulatory	Kaiser Permanente	Apr-14			Apr-14
549	Kaiser Permanente Gaithersburg Infusion	Pharmacy	Kaiser Permanente	Apr-14			Apr-14
550	Kaiser Permanente Gaithersburg Medical Center	Ambulatory	Kaiser Permanente	Apr-14			Apr-14
551	Kaiser Permanente Gaithersburg Pharmacy	Pharmacy	Kaiser Permanente	Apr-14			Apr-14
552	Kaiser Permanente Infusion Pharmacy	Pharmacy	Kaiser Permanente	Apr-14			Apr-14
553	Kaiser Permanente Kensington Pharmacy	Pharmacy	Kaiser Permanente	Jan-14			Jan-14
554	Kaiser Permanente Largo	Pharmacy	Kaiser Permanente	Apr-14			Apr-14
555	Kaiser Permanente Marlow Heights	Pharmacy	Kaiser Permanente	Apr-14			Apr-14
556	Kaiser Permanente - Mid Atlantic Permanente Medical Group	Ambulatory	Kaiser Permanente	Apr-14			Apr-14
557	Kaiser Permanente Pharmacy	Pharmacy	Kaiser Permanente	Feb-14			Feb-14
558	Kaiser Permanente Severna Park Pharmacy	Pharmacy	Kaiser Permanente	Feb-14			Feb-14
559	Kaiser Permanente Shady Grove	Pharmacy	Kaiser Permanente	Apr-14			Apr-14
560	Kaiser Permanente South Baltimore Co Pharmacy	Pharmacy	Kaiser Permanente	Jan-14			Jan-14
561	Kaiser Permanente Towson Medical Center	Ambulatory	Kaiser Permanente	Apr-14			Apr-14
562	Kaiser Permanente Towson Pharmacy	Pharmacy	Kaiser Permanente	Apr-14			Apr-14
563	Kaiser Permanente White Marsh Medical Center	Ambulatory	Kaiser Permanente	Mar-14			Mar-14
564	Kaiser Permanente Woodlawn Pharmacy	Pharmacy	Kaiser Permanente	Apr-14			Apr-14
565	Karl Spector, MD & Associates	Ambulatory		Feb-14			Feb-14
566	Key Point Health	Ambulatory	Apr-14	Apr-14			Apr-14
567	Kidney Health Center of Maryland, P.A.	Ambulatory	Dec-13	Apr-14	Apr-14		Apr-14
568	Kingdom Medicine P.A.	Ambulatory	Mar-13	Mar-13	Mar-13		Nov-13
569	Kleins Shoprite Pharmacy #545	Pharmacy		Sep-13			Nov-13
570	Kleins Shoprite Pharmacy #547	Pharmacy		Mar-14			Mar-14
571	Kleins Shoprite Pharmacy #548	Pharmacy		Mar-14			Mar-14
572	Kleins Shoprite Pharmacy #549	Pharmacy		Apr-14			Apr-14
573	Kleins Shoprite Pharmacy #551	Pharmacy		Mar-14			Mar-14
574	Kleins Shoprite Pharmacy #555	Pharmacy		Apr-14			Apr-14
575	Kleins Shoprite Pharmacy #563	Pharmacy		Apr-14			Apr-14

CRISP Portal, ENS & PDMP Adoption by Facility

Count	Organization	Type	Portal Participation Agreement	Training*	Portal Live*	ENS Live*	PDMP Access
576	Kmart Pharmacy	Pharmacy		Feb-14			Feb-14
577	Kmart Pharmacy #3146	Pharmacy		Feb-14			Feb-14
578	Kmart Pharmacy #3172	Pharmacy		Mar-14			Mar-14
579	Kmart Pharmacy #3237	Pharmacy		Apr-14			Apr-14
580	Kmart Pharmacy #3277	Pharmacy		Mar-14			Mar-14
581	Kmart Pharmacy #3796	Pharmacy		Mar-14			Mar-14
582	Kmart Pharmacy #7673	Pharmacy		Mar-14			Mar-14
583	Kmart Pharmacy #9524	Pharmacy		Jan-14			Jan-14
584	Kolmac Clinic	Ambulatory		Apr-14			Apr-14
585	Krishan K. Singal, MD	Ambulatory	Dec-13				
586	Kure Pain Management	Ambulatory		Jan-14			Jan-14
587	Laurel Medical Associates	Ambulatory	Jul-13				
588	Laurel Regional Hospital	Hospital	Jan-12	Jul-13	Sep-13		Nov-13
589	Lavale Pharmacy	Pharmacy		Feb-14			Feb-14
590	Leisure World	Long Term Care	Jul-11	Nov-11	Dec-11		
591	Levindale	Long Term Care	LifeBridge Health				
592	LifeBridge Health	Health System	Oct-10	Sep-12	Sep-12		
593	LifeBridge Health - Sinai Ambulatory Practice	Ambulatory	LifeBridge Health			Jun-13	
594	Lifestream Health	Ambulatory		Feb-14			Feb-14
595	Lighthouse Medical	Ambulatory		Apr-14			Apr-14
596	Lisa R. Halpern MD	Ambulatory		Mar-14			Mar-14
597	Lois A. Narr, D.O.	Ambulatory	Sep-13	Sep-13			
598	Lois M. Conn, M.D.	Ambulatory		Apr-14			Apr-14
599	Long View Nursing Home	Long Term Care	Mar-12	Apr-12			
600	Lorien Bel Air	Long Term Care	Lorien Health	May-12	May-12		
601	Lorien Columbia	Long Term Care	Lorien Health				
602	Lorien Encore at Turf Valley	Long Term Care	Lorien Health				
603	Lorien Health	Long Term Care	Jan-12				
604	Lorien Mays Chapel	Long Term Care	Lorien Health				
605	Lorien Mt. Airy	Long Term Care	Lorien Health				
606	Lorien Riverside	Long Term Care	Lorien Health				
607	Lorien Taneytown	Long Term Care	Lorien Health				
608	Lower Shore ACO	Ambulatory	Aug-13				
609	Lynch Primary Care	Ambulatory	Feb-14			Apr-14	
610	MacPhail Pharmacy	Pharmacy		Jan-14			Jan-14
611	Magnolia Management	Long Term Care	Mar-11				
612	Man Alive	Ambulatory	Sep-13	Dec-13	Dec-13		Dec-13
613	Manchester Medical Group, LLC	Ambulatory	Mar-13	Mar-13	Mar-13		Nov-13
614	Manchester Pharmacy	Pharmacy		Apr-14			Apr-14
615	Maple Shade Youth & Family Services	Ambulatory	Oct-13				
616	Marie A. Dobyns, MD, PA	Ambulatory	Jul-13	Jul-13	Sep-13	Aug-13	Nov-13
617	Martin's Food Market #6003	Pharmacy		Mar-14			Mar-14
618	Martins Food Markets	Pharmacy		Feb-14			Feb-14
619	Martins Pharmacy #6104	Pharmacy		Feb-14			Feb-14
620	Martins Pharmacy #6275	Pharmacy		Mar-14			Mar-14
621	Maryland Accountable Care Organization of the Eastern Shore	Ambulatory	Aug-13				
622	Maryland Accountable Care Organization of Western Maryland	Ambulatory	Aug-13				
623	Maryland Addiction Recovery Center	Ambulatory		Apr-14			Apr-14
624	Maryland Department of Health and Mental Hygiene	Government Agency	Dec-12				
625	Maryland Department of Public Safety and Correctional Services	Government Agency	Dec-12				
626	Maryland Kidney Group, PA	Ambulatory	Sep-12	Jul-13	Jul-13		Nov-13
627	Maryland Oncology And Hematology	Ambulatory	Jan-13	Jan-13	Jan-13		Nov-13
628	Maryland Open MRI	Radiology	Nov-12				
629	Maryland Pain & Spine Center, LLC	Ambulatory		Jan-14			Jan-14
630	Maryland Pain Specialists	Ambulatory		Jan-14			Jan-14
631	Maryland Primary Care Physicians	Ambulatory	Apr-13	Apr-13	Apr-13		Jan-14
632	Maryland Rehab and Pain	Pharmacy		Feb-14			Feb-14

CRISP Portal, ENS & PDMP Adoption by Facility

Count	Organization	Type	Portal Participation Agreement	Training*	Portal Live*	ENS Live*	PDMP Access
633	Maryland Spine and Sports Medicine, P.C.	Ambulatory		Feb-14			Feb-14
634	Massumi Associates	Ambulatory		Apr-14			Apr-14
635	Mazique Pediatrics, PC	Ambulatory	Jan-13	Jan-13	Jan-13		
636	Edward McCready Memorial Hospital	Hospital	Aug-11	Feb-14	Feb-14		Feb-14
637	McKays Pharmacy	Pharmacy		Feb-14			Feb-14
638	MD Laser Medicine & Surgery	Ambulatory	Aug-13				
639	Med One Pharmacy - Boonsboro	Pharmacy		Apr-14			Apr-14
640	Med One Pharmacy - Middletown	Pharmacy		Mar-14			Mar-14
641	Med One Pharmacy - Thurmont	Pharmacy		Apr-14			Apr-14
642	Med One Pharmacy - Woodbine	Pharmacy		Feb-14			Feb-14
643	Medpeds	Ambulatory	May-12	Jul-12	Jul-12	Dec-12	Mar-14
644	Medpsych Health Services	Ambulatory		Apr-14			Apr-14
645	MedStar	Health System	Jun-11				
646	MedStar Family Choice	FQHC	MedStar			Dec-13	
647	Medstar Franklin Square Medical Center	Hospital	MedStar	Jul-12	Jul-12	Jan-14	Nov-13
648	Medstar Good Samaritan Hospital	Hospital	MedStar	Jun-12	Jun-12		Nov-13
649	Medstar Harbor Hospital	Hospital	MedStar	Mar-12	Mar-12	Aug-12	Nov-13
650	MedStar Medical Group	Ambulatory		Feb-13			Nov-13
651	Medstar Montgomery Medical Center	Hospital	Jun-12	Dec-11	Dec-11		Nov-13
652	Medstar Pharmacy Store #3	Pharmacy		Jan-14			Jan-14
653	Medstar Pharmacy Store #4	Pharmacy		Jan-14			Jan-14
654	Medstar Pharmacy Store #6	Pharmacy		Jan-14			Jan-14
655	Medstar Pharmacy Store #7	Pharmacy		Jan-14			Jan-14
656	MedStar Promptcare	Ambulatory	MedStar				
657	Medstar Southern Maryland Hospital Center	Hospital	Aug-11	Feb-13	Feb-13		Apr-14
658	Medstar St. Mary's Hospital	Hospital	MedStar	May-13	Jun-13		
659	Medstar Union Memorial Hospital	Hospital	MedStar	May-12	May-12		Nov-13
660	Memorial Care Center	Ambulatory		Jan-14			Jan-14
661	Menocal Medical Services PA	Ambulatory		Feb-14			Feb-14
662	Mercy Medical Center	Hospital	Sep-11	Aug-12	Aug-12		Nov-13
663	Meridian Primary Care	Ambulatory	Mar-14	Mar-14	Mar-14		Mar-14
664	Meritus Medical Center	Hospital	Nov-11	Sep-12	Sep-12		Nov-13
665	Metropolitan Medical Specialists	Ambulatory	Mar-14				
666	Metro Renal Associates	Ambulatory		Apr-14			Apr-14
667	Mian Family Medicine, LLC	Ambulatory	Mar-11	Dec-11	Dec-11		Nov-13
668	Michael April & Associates	Ambulatory		Jan-14			Jan-14
669	Michael Crouch, M.D. , P.A.	Ambulatory		Mar-14			Mar-14
670	Michael Gray, MD, PC	Ambulatory		Apr-14			Apr-14
671	Michael Randolph M.D., PC	Ambulatory	Oct-12	Oct-13	Oct-13		Nov-13
672	Mid-Atlantic Berlin Nursing and Rehabilitation Center	Long Term Care	May-13	Aug-13	Sep-13	Sep-13	
673	Mid-Atlantic Chapel Hill Nursing & Rehab Center	Long Term Care	Mar-12				
674	Mid-Atlantic Fairfield Nursing and Rehabilitation	Long Term Care	Mar-12				
675	Mid-Atlantic Nephrology Associates, P.A.	Ambulatory	Sep-13	Sep-13	Oct-13		Nov-13
676	Mid Atlantic Neurosurgical Associates	Ambulatory		Apr-14			Apr-14
677	Mid-Atlantic Oakland Nursing & Rehab Center	Long Term Care	Mar-12				
678	Mid Atlantic Pain Institute	Ambulatory		Jan-14			Jan-14
679	Mid-Atlantic Pain Medicine Center	Ambulatory	Aug-13	Sep-13	Sep-13		Nov-13
680	Mid-Atlantic Villa Rosa Nursing Home	Long Term Care	Mar-12				
681	Middletown Valley Family Medicine, P.A.	Ambulatory	Oct-13	Oct-13	Oct-13		Nov-13
682	Mikhail Gendel Family Practice	Ambulatory		Jan-14			Jan-14
683	Mitchell Gittelman, DO,PA	Ambulatory	Dec-13	Jan-14	Jan-14		Jan-14
684	Mody & Miller MD PA	Ambulatory	Jan-13				
685	Monocacy Emergency Physicians	Ambulatory		Jan-14			Mar-14

CRISP Portal, ENS & PDMP Adoption by Facility

Count	Organization	Type	Portal Participation Agreement	Training*	Portal Live*	ENS Live*	PDMP Access
686	Montague Blundon, M.D.	Ambulatory		Jan-14			Jan-14
687	Montgomery County Medication Assisted Treatment Program	Ambulatory		Jan-14			Mar-14
688	Montgomery Medical Associates P.C.	Ambulatory	May-13	Jun-13	Nov-13	Nov-13	Nov-13
689	Montgomery Oncology Care and Hematology	Ambulatory		Jan-14			Jan-14
690	Montgomery Recovery Services	Ambulatory	Sep-13	Oct-13	Oct-13	Nov-13	
691	Montgomery Village Pain and Rehabilitation Center	Ambulatory		Jan-14			Jan-14
692	Mosaic Community Services	Ambulatory	Jan-13	Jan-13	Jan-13	Dec-13	Nov-13
693	Mountain Laurel Medical Center	FQHC	Apr-12	Jun-12	Jun-12		
694	Mountain Manor Treatment Center	Ambulatory		Mar-14			Mar-14
695	MPCP Annapolis	Ambulatory	Maryland Primary Care Physicians				
696	MPCP Arnold	Ambulatory	Maryland Primary Care Physicians	Apr-14	Apr-14		Apr-14
697	MPCP Columbia	Ambulatory	Maryland Primary Care Physicians	Feb-13	Sep-13		Nov-13
698	Mt. Washington Pediatric Hospital	Hospital	Jun-11	Apr-14	Apr-14		Apr-14
699	Mt Vernon Pharmacy	Pharmacy		Feb-14			Feb-14
700	Multi-specialty Healthcare	Ambulatory		Apr-14			Apr-14
701	N.B. Vellanki, MD	Ambulatory	Apr-13				
702	National Spine and Pain Centers	Ambulatory		Dec-13			Jan-14
703	Natural Family Wellness	Ambulatory	May-12	Apr-12	Apr-12	Dec-13	
704	Naturecare Pharmacy	Pharmacy		Mar-14			Mar-14
705	Neighborcare Howard Co General Hosp	Pharmacy		Sep-13			Nov-13
706	Neighborcare Pharmacy	Pharmacy		Jan-14			Jan-14
707	Neighborcare - Riderwood	Pharmacy		Jan-14			Jan-14
708	Neighborhood Wellness	Ambulatory		Apr-14			Apr-14
709	Neil E. Lattin, MD LLC	Ambulatory	Aug-12	Aug-12	Aug-12		Nov-13
710	Nephrology Associates PA	Ambulatory	Mar-13	Apr-13	Apr-13		Feb-14
711	Nephrology Center of Maryland	Ambulatory	Jan-12				
712	Nicholette Martin-Davis,MD LLC	Ambulatory		Apr-14			Apr-14
713	NMS Healthcare Annapolis	Long Term Care	NMS Healthcare Facilities	May-13	May-13		
714	NMS Healthcare Facilities	Long Term Care	May-13			Jul-13	
715	NMS Healthcare Hagerstown	Long Term Care	NMS Healthcare Facilities	May-13	May-13		
716	NMS Healthcare Hyattsville	Long Term Care	NMS Healthcare Facilities	May-13	May-13		Nov-13
717	NMS Silver Spring	Long Term Care	NMS Healthcare Facilities				
718	Northgate Pharmacy Inc	Pharmacy		Feb-14			Mar-14
719	Northwest Hospital Center	Hospital	Jan-12	Sep-12	Sep-12		Nov-13
720	Nova Interventional Pain Management	Ambulatory		Feb-14			Feb-14
721	Oakcrest	Long Term Care	Sep-11				
722	Olney Professional Pharmacy Inc	Pharmacy		Jan-14			Jan-14
723	Omnicare of Salisbury	Pharmacy		Oct-13			Nov-13
724	Omni Medical Center	Ambulatory	Nov-12	Oct-12	Nov-12		
725	Optimum Health Systems Inc.	Ambulatory	Dec-13	Dec-13	Dec-13		Dec-13
726	Orchard Pharmacy	Pharmacy		Mar-14			Mar-14
727	OrthoBethesda	Ambulatory	Feb-13				
728	OrthoMaryland	Ambulatory		Mar-14			Mar-14
729	Owensville Primary Care, Inc.	FQHC	Sep-13	Aug-13	Sep-13		Nov-13
730	Padek Healthcare Pharmacy LLC	Pharmacy		Mar-14			Mar-14
731	Pain, Spine & Rehab Associates	Ambulatory		Mar-14			Mar-14
732	Pain Management Institute	Ambulatory		Mar-14			Mar-14
733	Pain Management Specialists	Ambulatory		Jan-14			Jan-14
734	Pain Medicine and Rehab Services	Ambulatory		Feb-14			Feb-14
735	Paraclete Care	Ambulatory	Apr-14	Apr-14	Apr-14		Apr-14

CRISP Portal, ENS & PDMP Adoption by Facility

Count	Organization	Type	Portal Participation Agreement	Training*	Portal Live*	ENS Live*	PDMP Access
736	Park Medical Associates	Ambulatory	Dec-13	Dec-13	Jan-14		Jan-14
737	Park Pharmacy Inc	Pharmacy		Feb-14			Feb-14
738	Parkview Medical Group	Ambulatory	Jun-11	Apr-14	Apr-14		Apr-14
739	Parkway Neuroscience and Spine Institute	Ambulatory		Jan-14			Jan-14
740	Patient First	Ambulatory		Apr-14			Apr-14
741	Patricia M. Sullivan, MD	Ambulatory	Jan-14	Feb-14			Feb-14
742	Paul Katz, DO	Ambulatory		Feb-14			Feb-14
743	Paul T. Barbera MD, PA	Ambulatory	Jan-14	Jan-14	Jan-14		Jan-14
744	Pediatric & Adolescent Care of Silver Spring	Ambulatory	Dec-13	Feb-14	Feb-14	Apr-14	Feb-14
745	Pediatric Associates of Montgomery County	Ambulatory		Apr-14			Apr-14
746	Pediatrics At The Harbor	Ambulatory	University of Maryland Medical Center			Jul-13	
747	Peninsula Orthopaedic Associates	Ambulatory		Mar-14	Mar-14		Mar-14
748	Peninsula Regional Medical Center	Hospital	Nov-12	May-13	Sep-13		Nov-13
749	Peninsula Regional Medical Group	Ambulatory		Apr-14			Apr-14
750	Peninsula Regional Neurosurgery	Ambulatory		Apr-14			Apr-14
751	People's Community Health Centers	FQHC	Jan-13	Feb-13	Feb-13	Aug-13	
752	People Encouraging People, Inc.	Ambulatory	Apr-13	Jul-13	Jul-13	Jul-13	Nov-13
753	Perkis and Ferenz Family Medicine	Ambulatory	Mar-14	Apr-14	Apr-14		Apr-14
754	Philip Konits MD LLC	Ambulatory	Jan-14	Apr-13	Jan-14		Jan-14
755	Phoenix Health Center	Ambulatory		Jan-14			Jan-14
756	PHS Fort Lincoln Family Medicine	Ambulatory	Nov-13	Feb-14	Feb-14	Feb-14	Feb-14
757	Physical Medicine & Pain Management Associates, P.C.	Ambulatory		Jan-14			Jan-14
758	Physician Associates	Ambulatory		Apr-14			Apr-14
759	Physicians House Calls	Long Term Care	Sep-13	Sep-13	Sep-13	Dec-13	Nov-13
760	Piccard Surgery Center, LLC	Ambulatory	Nov-13	May-13	May-13		
761	Pittsville Pharmacy - E Old Ocean City	Pharmacy		Jan-14			Jan-14
762	Poolesville Family Practice	Ambulatory	Mar-12	Jul-12	Jul-12		Nov-13
763	Positive Progression	Ambulatory		Apr-14			Apr-14
764	Potomac Obstetrics and Gynecology	Ambulatory	Mar-13	Mar-13	Mar-13		
765	Potomac Pain & Rehab	Ambulatory		Apr-14			Apr-14
766	Potomac Physician Associates	Ambulatory	Jun-11	Dec-11	Dec-11	Oct-12	Mar-14
767	Potomac Physician Associates Bethesda	Ambulatory	Jun-11	Jun-11	Jun-11		Nov-13
768	Potomac Physician Associates Germantown	Ambulatory	Jun-11	Apr-13	Apr-13		Feb-14
769	Potomac Physician Associates Kensington	Ambulatory	Jun-11	May-13	Jun-13		Feb-14
770	Potomac Physicians PA	Ambulatory	Oct-12	Oct-12	Oct-12	Mar-13	Nov-13
771	Potomac Prompt Medical Care	Ambulatory		Jan-14			Jan-14
772	Potomac Valley Nursing & Wellness Ctr	Long Term Care	Jun-12	Jun-12	Jun-12		
773	Prafull Patel, MD, LLC	Ambulatory	Oct-13	Nov-13	Nov-13		Nov-13
774	Preetinder Sandhu, M.D.	Ambulatory		Apr-14			Apr-14
775	Pregnancy Aid Center	Ambulatory	Apr-13	Apr-13	Jun-13		
776	Preston Family Physicians	Ambulatory		Apr-14			Apr-14
777	PR Family Medicine	Ambulatory		Jan-14			Jan-14
778	Primary Care Coalition of Mont. County	FQHC	Nov-11	Jun-12	Jun-12		
779	Prince George's County Health Department	Government Agency	May-13				
780	Prince George's Hospital Center	Hospital	Jul-12	Apr-13	Apr-13		Nov-13
781	Priority Care Clinic	Pharmacy		Jan-14			Jan-14
782	Priority Care Clinics	Ambulatory		Feb-14			Feb-14
783	Professional Pharmacy of Essex	Pharmacy		Sep-13			Nov-13
784	Progressive Radiology	Radiology	Dec-11	May-12	May-12		
785	Prologue Inc.	Ambulatory	Aug-13	Aug-13	Sep-13		
786	Proyecto Salud Clinic	Ambulatory	May-13	Jun-13	Nov-13	Apr-14	Nov-13

CRISP Portal, ENS & PDMP Adoption by Facility

Count	Organization	Type	Portal Participation Agreement	Training*	Portal Live*	ENS Live*	PDMP Access
787	Psych Associates of MD	Ambulatory		Apr-14			Apr-14
788	Psychiatry Center of Frederick	Ambulatory		Jan-14			Jan-14
789	Psychotherapeutic Services	Ambulatory	Aug-13	Aug-13		Nov-13	
790	Quarterfiled Pharamcy	Pharmacy		Feb-14			Feb-14
791	Radiation Physics	Radiology	Nov-12	Aug-13			
792	RadNet	Radiology	Sep-10	Nov-11	Mar-12		
793	Randal Steele, DO	Pharmacy		Feb-14			Feb-14
794	Ravinder K. Rustagi M.D.	Pharmacy		Jan-14			Jan-14
795	REACH Health Services	Ambulatory	Sep-13	Sep-13	Sep-13		Dec-13
796	Reddix Family Health Care	Ambulatory	Jul-11				
797	Redner's Pharmacy #35	Pharmacy		Jan-14			Jan-14
798	Redner's Pharmacy - Bel Air	Pharmacy		Feb-14			Feb-14
799	Reeds Pharmacy #3	Pharmacy		Apr-14			Apr-14
800	Reesers Pharmacy Inc	Pharmacy		Mar-14			Mar-14
801	Regional Hematology & Oncology, P.A.	Ambulatory	Feb-14	Mar-14	Mar-14		Mar-14
802	Rehabilitation and Sports Medicine Associates	Ambulatory		Apr-14			Apr-14
803	Rehabit Smartcenter	Ambulatory		Apr-14			Apr-14
804	Rheumatology Associates of Baltimore	Ambulatory	Jun-13	Oct-13	Oct-13	Aug-13	
805	Richard Bombach, MD	Ambulatory		Apr-14			Apr-14
806	Riderwood	Long Term Care	Sep-11				
807	Righttime Medical Care	Ambulatory	Mar-11	Apr-14	Apr-14		Apr-14
808	Ritchie Pharmacy	Pharmacy		Apr-14			Apr-14
809	Rite Aid #0278	Pharmacy		Apr-14			Apr-14
810	Rite Aid #0287	Pharmacy		Apr-14			Apr-14
811	Rite Aid #0324	Pharmacy		Sep-13			Nov-13
812	Rite Aid #0334	Pharmacy		Apr-14			Apr-14
813	Rite Aid #0339	Pharmacy		Apr-14			Apr-14
814	Rite Aid #0349	Pharmacy		Apr-14			Apr-14
815	Rite Aid #0365	Pharmacy		Apr-14			Apr-14
816	Rite Aid #0374	Pharmacy		Apr-14			Apr-14
817	Rite Aid #0382	Pharmacy		Apr-14			Apr-14
818	Rite Aid #0391	Pharmacy	Apr-14	Apr-14			Apr-14
819	Rite Aid #0482	Pharmacy		Apr-14			Apr-14
820	Rite Aid #0489	Pharmacy		Apr-14			Apr-14
821	Rite Aid #1086	Pharmacy		Jan-14			Jan-14
822	Rite Aid #11197	Pharmacy		Apr-14			Apr-14
823	Rite Aid #11198	Pharmacy		Apr-14			Apr-14
824	Rite Aid #11202	Pharmacy		Apr-14			Apr-14
825	Rite Aid #11203	Pharmacy		Apr-14			Apr-14
826	Rite Aid #11204	Pharmacy		Jan-14			Jan-14
827	Rite Aid #11206	Pharmacy		Apr-14			Apr-14
828	Rite Aid #11210	Pharmacy		Apr-14			Apr-14
829	Rite Aid #11212	Pharmacy		Apr-14			Apr-14
830	Rite Aid #11213	Pharmacy		Nov-13			Nov-13
831	Rite Aid #11219	Pharmacy		Apr-14			Apr-14
832	Rite Aid #1757	Pharmacy		Apr-14			Apr-14
833	Rite Aid #1859	Pharmacy		Apr-14			Apr-14
834	Rite Aid #2210	Pharmacy		Apr-14			Apr-14
835	Rite Aid #2212	Pharmacy		Apr-14			Apr-14
836	Rite Aid #2214	Pharmacy		Oct-13			Nov-13
837	Rite Aid #2217	Pharmacy		Apr-14			Apr-14
838	Rite Aid #2235	Pharmacy		Apr-14			Apr-14
839	Rite Aid #2253	Pharmacy		Apr-14			Apr-14
840	Rite Aid #2690	Pharmacy		Apr-14			Apr-14
841	Rite Aid #2752	Pharmacy		Apr-14			Apr-14
842	Rite Aid #3000	Pharmacy		Apr-14			Apr-14
843	Rite Aid #3752	Pharmacy		Apr-14			Apr-14
844	Rite Aid #3757	Pharmacy		Apr-14			Apr-14

CRISP Portal, ENS & PDMP Adoption by Facility

Count	Organization	Type	Portal Participation Agreement	Training*	Portal Live*	ENS Live*	PDMP Access
845	Rite Aid #3758	Pharmacy		Apr-14			Apr-14
846	Rite Aid #3781	Pharmacy		Apr-14			Apr-14
847	Rite Aid #3782	Pharmacy		Apr-14			Apr-14
848	Rite Aid #3818	Pharmacy		Apr-14			Apr-14
849	Rite Aid #3826	Pharmacy		Apr-14			Apr-14
850	Rite Aid #3827	Pharmacy		Apr-14			Apr-14
851	Rite Aid #3831	Pharmacy		Apr-14			Apr-14
852	Rite Aid #3837	Pharmacy		Apr-14			Apr-14
853	Rite Aid #3871	Pharmacy		Jan-14			Jan-14
854	Rite Aid #4248	Pharmacy		Apr-14			Apr-14
855	Rite Aid #4250	Pharmacy		Apr-14			Apr-14
856	Rite Aid #4665	Pharmacy		Apr-14			Apr-14
857	Rite Aid #4909	Pharmacy		Apr-14			Apr-14
858	Rite Aid #4912	Pharmacy		Apr-14			Apr-14
859	Rite Aid #4917	Pharmacy		Apr-14			Apr-14
860	Rite Aid #4942	Pharmacy		Apr-14			Apr-14
861	Rite Aid #7766	Pharmacy		Apr-14			Apr-14
862	Rite Aid #7773	Pharmacy		Apr-14			Apr-14
863	Ritu Bhambhani, LLC	Ambulatory		Jan-14			Jan-14
864	Riverside MCO	Payor	May-13			Jun-13	
865	Robinwood Pain Center	Ambulatory	Nov-11	Apr-14	Apr-14		Apr-14
866	Rockville Geriatrics and Palliative Medicine	Long Term Care	Mar-12	Dec-13	Dec-13		Dec-13
867	Rockville Internal Medicine Group	Ambulatory	Jul-11	Dec-11	Jul-12		Nov-13
868	Roman Ostrovsky M.D	Ambulatory		Jan-14			Jan-14
869	Rosen-Hoffberg Rehabilitation and Pain Management	Ambulatory		Jan-14			Jan-14
870	Safeway Pharmacy #0128	Pharmacy		Apr-14			Apr-14
871	Safeway Pharmacy #1075	Pharmacy		Feb-14			Feb-14
872	Safeway Pharmacy #1089	Pharmacy		Feb-14			Feb-14
873	Safeway Pharmacy #1616	Pharmacy		Apr-14			Apr-14
874	Safeway Pharmacy #1657	Pharmacy		Feb-14			Feb-14
875	Safeway Pharmacy #1715	Pharmacy		Mar-14			Mar-14
876	Safeway Pharmacy #1731	Pharmacy		Mar-14			Mar-14
877	Safeway Pharmacy #2608	Pharmacy		Feb-14			Feb-14
878	Safeway Pharmacy #2629	Pharmacy		Feb-14			Feb-14
879	Safeway Pharmacy #2661	Pharmacy		Apr-14			Apr-14
880	Safeway Pharmacy #2797	Pharmacy		Feb-14			Feb-14
881	Saga Medical, Inc.	Ambulatory	Jan-13	Apr-14	Apr-14		Apr-14
882	Sante Group	Ambulatory	Nov-13				
883	Scaria Mathew MD	Ambulatory	Feb-13	Feb-13	Feb-13		Nov-13
884	Scott Maurer, MD	Ambulatory	Jul-11				
885	Season's Hospice	Long Term Care	Jun-12	Jul-12	Jul-12		
886	Seidenberg Protzko Eye Associates	Ambulatory	Oct-12	Oct-12	Oct-12		
887	Service Care Pharmacy	Pharmacy		Apr-14			Apr-14
888	Seton Medical Group	Ambulatory	St. Agnes Hospital	May-13	May-13	Jun-13	Nov-13
889	Seton Pain and Rehabilitation Center	Ambulatory		Feb-14			Feb-14
890	Shady Grove Adventist Hospital	Hospital	Adventist Healthcare	Dec-11	Dec-11	Sep-13	Nov-13
891	Shady Grove Adventist Radiation Oncology Center	Ambulatory	Mar-12	Jan-13	Jan-13		Dec-13
892	Shady Grove Orthopedic Associates	Ambulatory		Jan-14			Jan-14
893	Shady Grove Radiology	Radiology	Feb-12	Dec-12	Dec-12		
894	Shah Associates	Ambulatory	Dec-13				
895	Sharon M. Messics, MD	Ambulatory	Feb-13			May-13	
896	Sharon Y Alongi MD PA	Ambulatory	Apr-14	Apr-14			Apr-14
897	Sharpsburg Pharmacy	Pharmacy		Feb-14			Feb-14
898	Shayona Pharmacy	Pharmacy		Mar-14			Mar-14
899	Shepherd's Clinic	Ambulatory	Jul-11	Nov-11	Nov-11		
900	Sheppard Pratt Physician's P.A.	Ambulatory	Dec-13				
901	Shoppers Pharmacy #2256	Pharmacy		Apr-14			Apr-14
902	Shoppers Pharmacy #2283/926	Pharmacy		Apr-14			Apr-14

CRISP Portal, ENS & PDMP Adoption by Facility

Count	Organization	Type	Portal Participation Agreement	Training*	Portal Live*	ENS Live*	PDMP Access
903	Shoppers Pharmacy #2287/941	Pharmacy		Mar-14			Mar-14
904	Shoppers Pharmacy #2290/951	Pharmacy		Mar-14			Mar-14
905	Shoppers Pharmacy #2293/961	Pharmacy		Apr-14			Apr-14
906	Shoppers Pharmacy #2369/953	Pharmacy		Apr-14			Apr-14
907	Shoppers Pharmacy #2371/956	Pharmacy		Apr-14			Apr-14
908	Shoppers Pharmacy #2377/969	Pharmacy		Apr-14			Apr-14
909	Shoprte of Perring Parkway Pharmacy #567	Pharmacy		Apr-14			Apr-14
910	Shoprte Pharmacy #536	Pharmacy		Feb-14			Feb-14
911	Sinai Hospital of Baltimore	Hospital	LifeBridge Health	Aug-12	Sep-12		Nov-13
912	Smaldore Family Practice	Ambulatory	Apr-13	Aug-13	Aug-13		Nov-13
913	Smart Pain Management	Ambulatory	Feb-14	Apr-14	Apr-14		Apr-14
914	Snow Hill Family Medicine	Ambulatory		Feb-14			Feb-14
915	Snow Hill Pharmacy Inc	Pharmacy		Mar-14			Mar-14
916	Sood Family Medicine	Ambulatory	Mar-12	Sep-13	Sep-13		Nov-13
917	South Baltimore County Medical Center	Ambulatory		Mar-14			Mar-14
918	South Baltimore Pharmacy	Pharmacy		Mar-14			Mar-14
919	South Cumberland Pharmacy	Pharmacy		Mar-14			Mar-14
920	Southern Maryland Women's Healthcare	Ambulatory	Feb-14				
921	South River Family Medicine	Ambulatory	Anne Arundel HealthCare Enterprises, Inc.	Jun-13	Jul-13		Apr-14
922	South River Internal Medicine	Ambulatory		Jan-14			Jan-14
923	Spine, Sports Medicine and Pain Management, LLC	Ambulatory		Mar-14			Mar-14
924	Spine Team Maryland (Affiliated with Doctors Community Hospital)	Ambulatory		Feb-14			Feb-14
925	Sports and Spine Pain Management	Ambulatory		Feb-14			Feb-14
926	Springfield Hospital Center	Ambulatory		Feb-14			Feb-14
927	Sridhar Chatrathi, MD PC	Ambulatory	Mar-14	Apr-14	Apr-14		Apr-14
928	St. Agnes Hospital	Hospital	Oct-11	Dec-12	Dec-12		Nov-13
929	St. John's Pharmacy	Pharmacy		Jan-14			Jan-14
930	Stem-Ross Weight Loss Center	Ambulatory		Jan-14			Jan-14
931	Stephanie Durruthy, MD.PA	Ambulatory		Apr-14			Apr-14
932	Steve's Pharmacy	Pharmacy		Jan-14			Jan-14
933	Steven Lacher MD PA	Ambulatory	Aug-13	Aug-13	Sep-13		Nov-13
934	Steven Lenowitz, MD, LLC	Ambulatory		Apr-14			Apr-14
935	Steven Salzberg MD	Ambulatory		Apr-14			Apr-14
936	Stone Run Family Medicine	Ambulatory	Jun-12	Jun-12	Jun-12	Oct-12	Nov-13
937	Suburban Hospital	Hospital	Sep-11	Nov-11	Sep-11		Nov-13
938	Suburban Psychiatric Associates	Ambulatory		Jan-14			Jan-14
939	Summit Orthopedics	Ambulatory		Apr-14			Apr-14
940	Summit Pharmacy Inc	Pharmacy		Mar-14			Mar-14
941	Sun Pharmacy	Pharmacy		Mar-14			Mar-14
942	Susquehanna Obstetrics Gynecology & Nurse Midwifery	Ambulatory	Aug-12				
943	Tansinda Medical Associates	Ambulatory	Oct-12				
944	Target Store #T-1000	Pharmacy		Apr-14			Apr-14
945	Target Store #T-1002	Pharmacy		Mar-14			Mar-14
946	Target Store #T-1006	Pharmacy		Mar-14			Mar-14
947	Target Store #T-1042	Pharmacy		Apr-14			Apr-14
948	Target Store #T-1142	Pharmacy		Apr-14			Apr-14
949	Target Store #T-1193	Pharmacy		Apr-14			Apr-14
950	Target Store #T-1257	Pharmacy		Mar-14			Mar-14
951	Target Store #T-1258	Pharmacy		Apr-14			Apr-14
952	Target Store #T-1871	Pharmacy		Apr-14			Apr-14
953	Target Store #T-1938	Pharmacy		Apr-14			Apr-14
954	Target Store #T-1970	Pharmacy		Apr-14			Apr-14
955	Target Store T-2393	Pharmacy		Apr-14			Apr-14
956	Target T-2845	Pharmacy		Apr-14			Apr-14
957	THC - Bon Secours	Ambulatory	Total Healthcare				

CRISP Portal, ENS & PDMP Adoption by Facility

Count	Organization	Type	Portal Participation Agreement	Training*	Portal Live*	ENS Live*	PDMP Access
958	THC - Division Street	FQHC	Total Healthcare	Jun-13	Jun-13		Nov-13
959	THC - Kirk Avenue	FQHC	Total Healthcare	Jul-13	Jul-13		Nov-13
960	THC - Linden Pediatrics	Ambulatory	Total Healthcare	Jul-13	Oct-13		Nov-13
961	THC - Men's Health	Ambulatory	Total Healthcare	Nov-13	Nov-13		Nov-13
962	THC - Mondawmin	FQHC	Total Healthcare	May-13	Jul-13		Nov-13
963	THC - Saratoga	Ambulatory	Total Healthcare	Nov-13	Nov-13		Nov-13
964	THC - True Health	Ambulatory	Total Healthcare	Jul-13	Oct-13		Nov-13
965	THC - Westside	Ambulatory	Total Healthcare	Jul-13	Nov-13		Nov-13
966	The Asbury Group	Long Term Care	Dec-13	Mar-14	Mar-14		Mar-14
967	The Carle Center for Pain Management, LLC	Ambulatory		Mar-14			Mar-14
968	The Carol M Porto Treatment Center	Ambulatory		Jan-14			Jan-14
969	The Casey Health Institute	Ambulatory	Nov-13	Jan-14	Jan-14		Jan-14
970	The Center for Breast Health	Ambulatory	Sep-13	Aug-13	Oct-13		Nov-13
971	The Coordinating Center	Ambulatory	Jul-13			Nov-13	
972	The Kahan Center For Pain Management	Ambulatory	Sep-13	Jan-14	Jan-14		Jan-14
973	The Lifebridge Pharmacy at Northwest Hospital	Pharmacy		Jan-14			Jan-14
974	The Lifebridge Pharmacy at Sinai Hospital	Pharmacy		Jan-14			Jan-14
975	The Lions Center for Rehabilitation and Extended Care	Long Term Care	May-13	Jun-13	Jul-13	Jun-13	
976	The Pain Management Group	Ambulatory		Apr-14			Apr-14
977	The Pain Treatment Center of Greater Washington	Ambulatory		Apr-14			Apr-14
978	The Pediatric Group	Ambulatory	Mar-12	Jul-12	Jul-12	Apr-13	
979	The Primary Care Group of Maryland	Ambulatory	Apr-13	Apr-13	Apr-13		Nov-13
980	Therapeutic Living For Families	Ambulatory	Aug-13	Aug-13	Oct-13	Jan-14	
981	The Sandra and Malcolm Berman Brain & Spine Instit	Ambulatory		Mar-14			Mar-14
982	Thomas E Maslen, MD, LLC	Ambulatory	Feb-13	May-13	May-13		Nov-13
983	Three Lower Counties Community Services	FQHC	Jan-14				
984	Thrive Behavioral Health	Ambulatory	Apr-14				
985	Tidewater Pharmacy Inc	Pharmacy		Jan-14			Jan-14
986	TLCCS - Healthway Drive	Ambulatory	Three Lower Counties Community Services				
987	TLCCS - Phillip Morris	Ambulatory	Three Lower Counties Community Services				
988	TLCCS - Pocomoke	Ambulatory	Three Lower Counties Community Services				
989	TLCCS - Princess Anne	Ambulatory	Three Lower Counties Community Services				
990	TLCCS - Riverside	Ambulatory	Three Lower Counties Community Services	Apr-14	Apr-14		Apr-14
991	TLCCS - Sweetbay Pediatrics	Ambulatory	Three Lower Counties Community Services				
992	TLCCS - Woodbrooke	Ambulatory	Three Lower Counties Community Services	Apr-14	Apr-14		Apr-14
993	Total Family Care	Ambulatory	Aug-13				
994	Total Healthcare	FQHC	May-13	Jul-13	Jul-13	Nov-13	Nov-13
995	Towson Neurology Associates, PA	Ambulatory		Mar-14			Mar-14

CRISP Portal, ENS & PDMP Adoption by Facility

Count	Organization	Type	Portal Participation Agreement	Training*	Portal Live*	ENS Live*	PDMP Access
996	Towson Pharmacy	Pharmacy		Apr-14			Apr-14
997	True Care Medical	Ambulatory		Mar-14			Mar-14
998	Ulmer Family Medicine	Ambulatory	Feb-12	May-12	May-12	Oct-12	Nov-13
999	UMMS Pharmacy - Redwood	Pharmacy		Apr-14			Apr-14
1000	Union Bridge Family Practice	Ambulatory		Jan-14			Jan-14
1001	Union Hospital of Cecil County	Hospital	Feb-11	Sep-12	Sep-12		Nov-13
1002	Union Neurology Services	Ambulatory	Feb-11	Feb-14	Feb-14		Feb-14
1003	Union Primary Care Elkton	Ambulatory	Feb-11	Apr-13	Apr-13		Nov-13
1004	United Health Care	Payor	Sep-13			Nov-13	
1005	University Care Heritage Crossing	Ambulatory	University of Maryland Medical Center	May-12	May-13	Aug-13	Jan-14
1006	University Care of Edmondson Village	Ambulatory	University of Maryland Medical Center	Jun-13	Jun-13	Aug-13	Nov-13
1007	University Care of Shipley's Choice	Ambulatory	University of Maryland Medical Center	May-12	Jul-13	Aug-13	
1008	University Family Medicine Faculty Physicans	Ambulatory	University of Maryland Medical Center	Apr-13	Apr-13	Mar-13	Nov-13
1009	University of Maryland Cardiology Physicians	Ambulatory	University of Maryland Medical Center	Mar-13	Apr-13		
1010	University of Maryland Charles Regional Medical Center (Civista Medical Center)	Hospital	University of Maryland Medical System	Jan-13	Jan-13		Nov-13
1011	University of Maryland Medical Center	Hospital	University of Maryland Medical System	Jul-12	Jul-12		Nov-13
1012	University of Maryland Medical Center Midtown Campus	Hospital	University of Maryland Medical System	Feb-13	Feb-13		Nov-13
1013	University of Maryland Medical System	Health System	Aug-11	Dec-13	Dec-13		Dec-13
1014	University of Maryland Pain Center	Ambulatory		Jan-14			Jan-14
1015	University of Maryland Rehabilitation and Orthopaedic Institute (formerly, James Lawrence Kernan Hospital)	Hospital	University of Maryland Medical System	Feb-14	Feb-14		Feb-14
1016	University of Maryland Shore Medical Center at Chestertown	Hospital	University of Maryland Medical System	Mar-13	Mar-13		Nov-13
1017	University of Maryland Shore Medical Center at Dorchester	Hospital	University of Maryland Medical System	Jan-14	Jan-14		Jan-14
1018	University of Maryland Shore Medical Center at Easton	Hospital	University of Maryland Medical System	Mar-13	Oct-13		Apr-14
1019	University of Maryland St. Joseph Medical Center	Hospital	Oct-11	Mar-12	May-12	Aug-12	Dec-13
1020	Upper Bay Counseling and Support Services	Ambulatory	Aug-13	Oct-13	Oct-13	Dec-13	
1021	Upper Chesapeake Medical Center	Hospital	Nov-11	Aug-12	Aug-12		Nov-13
1022	VA Maryland Health Care System	Government Agency		Apr-14			Apr-14
1023	Vel Natesan MD PA	Ambulatory	Apr-14				
1024	Vesta, Inc.	Ambulatory	Nov-13	Mar-14	Mar-14		Mar-14
1025	Village at Rockville	Long Term Care	Jun-11	Nov-11	Nov-11		
1026	Village Green Apothecary	Pharmacy		Apr-14			Apr-14
1027	Villa Maria of Washington County	Ambulatory		Apr-14			Apr-14
1028	Virgo-Carter Pediatrics	Ambulatory	Jun-12				
1029	Vishal Datta, M.D., P.A.	Ambulatory	May-13	May-13	Sep-13		
1030	Walgreens #02446	Pharmacy		Mar-14			Mar-14
1031	Walgreens #05408	Pharmacy		Feb-14			Feb-14
1032	Walgreens #05409	Pharmacy		Mar-14			Mar-14
1033	Walgreens #05410	Pharmacy		Apr-14			Apr-14
1034	Walgreens #05587	Pharmacy		Mar-14			Mar-14

CRISP Portal, ENS & PDMP Adoption by Facility

Count	Organization	Type	Portal Participation Agreement	Training*	Portal Live*	ENS Live*	PDMP Access
1035	Walgreens #05623	Pharmacy		Apr-14			Apr-14
1036	Walgreens #05686	Pharmacy		Feb-14			Feb-14
1037	Walgreens #06265	Pharmacy		Mar-14			Mar-14
1038	Walgreens #06320	Pharmacy		Mar-14			Mar-14
1039	Walgreens #06779	Pharmacy		Apr-14			Apr-14
1040	Walgreens #07357	Pharmacy		Feb-14			Feb-14
1041	Walgreens #07554	Pharmacy		Mar-14			Mar-14
1042	Walgreens #07573	Pharmacy		Feb-14			Feb-14
1043	Walgreens #07574	Pharmacy		Apr-14			Apr-14
1044	Walgreens #07701	Pharmacy		Apr-14			Apr-14
1045	Walgreens #09028	Pharmacy		Mar-14			Mar-14
1046	Walgreens #09342	Pharmacy		Mar-14			Mar-14
1047	Walgreens #09632	Pharmacy		Feb-14			Feb-14
1048	Walgreens #09926	Pharmacy		Mar-14			Mar-14
1049	Walgreens #09927	Pharmacy		Mar-14			Mar-14
1050	Walgreens #09967	Pharmacy		Feb-14			Feb-14
1051	Walgreens #10063	Pharmacy		Mar-14			Mar-14
1052	Walgreens #10076	Pharmacy		Mar-14			Mar-14
1053	Walgreens #10402	Pharmacy		Mar-14			Mar-14
1054	Walgreens #10539	Pharmacy		Feb-14			Feb-14
1055	Walgreens #10976	Pharmacy		Feb-14			Feb-14
1056	Walgreens #10977	Pharmacy		Feb-14			Feb-14
1057	Walgreens #11031	Pharmacy		Apr-14			Apr-14
1058	Walgreens #11054	Pharmacy		Feb-14			Feb-14
1059	Walgreens #11140	Pharmacy		Mar-14			Mar-14
1060	Walgreens #11169	Pharmacy		Mar-14			Mar-14
1061	Walgreens #11283	Pharmacy		Feb-14			Feb-14
1062	Walgreens #11501	Pharmacy		Mar-14			Mar-14
1063	Walgreens #11594	Pharmacy		Mar-14			Mar-14
1064	Walgreens #11949	Pharmacy		Feb-14			Feb-14
1065	Walgreens #11999	Pharmacy		Feb-14			Feb-14
1066	Walgreens #12130	Pharmacy		Mar-14			Mar-14
1067	Walgreens #12266	Pharmacy		Feb-14			Feb-14
1068	Walgreens #12324	Pharmacy		Feb-14			Feb-14
1069	Walgreens #12433	Pharmacy		Mar-14			Mar-14
1070	Walgreens #12472	Pharmacy		Mar-14			Mar-14
1071	Walgreens #12560	Pharmacy		Mar-14			Mar-14
1072	Walgreens #12748	Pharmacy		Mar-14			Mar-14
1073	Walgreens #12790	Pharmacy		Mar-14			Mar-14
1074	Walgreens #12846	Pharmacy		Feb-14			Feb-14
1075	Walgreens #13149	Pharmacy		Mar-14			Mar-14
1076	Walgreens #13457	Pharmacy		Mar-14			Mar-14
1077	Walgreens #13606	Pharmacy		Mar-14			Mar-14
1078	Walgreens #13816	Pharmacy		Apr-14			Apr-14
1079	Walgreens #13840	Pharmacy		Mar-14			Mar-14
1080	Walgreens #13892	Pharmacy		Feb-14			Feb-14
1081	Walgreens #13893	Pharmacy		Feb-14			Feb-14
1082	Walgreens #15117	Pharmacy		Feb-14			Mar-14
1083	Walgreens #15130	Pharmacy		Apr-14			Apr-14
1084	Walgreens #15185	Pharmacy		Feb-14			Feb-14
1085	Walgreens #15284	Pharmacy		Mar-14			Mar-14
1086	Walgreens #15360	Pharmacy		Apr-14			Apr-14
1087	Walgreens #15958	Pharmacy		Mar-14			Mar-14
1088	Walgreens #15978	Pharmacy		Mar-14			Mar-14
1089	Walgreens #15979	Pharmacy		Mar-14			Mar-14
1090	Walgreens #15980	Pharmacy		Mar-14			Mar-14
1091	Walgreens #16186	Pharmacy		Apr-14			Apr-14
1092	Walgreens #5331	Pharmacy		Mar-14			Mar-14
1093	Walgreens #6396	Pharmacy		Mar-14			Mar-14
1094	Walgreens #7678	Pharmacy		Mar-14			Mar-14
1095	Walgreens #9028	Pharmacy		Feb-14			Feb-14

CRISP Portal, ENS & PDMP Adoption by Facility

Count	Organization	Type	Portal Participation Agreement	Training*	Portal Live*	ENS Live*	PDMP Access
1096	Walgreens #9032	Pharmacy		Feb-14			Feb-14
1097	Walgreens Pharmacy	Pharmacy		Feb-14			Feb-14
1098	Walnut Street Community Health Center	FQHC	Feb-14	Mar-14	Mar-14		Mar-14
1099	Washington Adventist Hospital	Hospital	Adventist Healthcare	Apr-11	Apr-11		Nov-13
1100	Washington Center for Women's and Children's Wellness	Ambulatory		Apr-14			Apr-14
1101	Washington County Health Dept	Government Agency		Jan-14			Jan-14
1102	Washington Open MRI	Radiology	Nov-12				
1103	Waugh Chapel Family Medicine	Ambulatory	Anne Arundel HealthCare Enterprises, Inc.	Jul-13	Sep-13		
1104	Wayne Meyer, MD	Ambulatory	Feb-14	Mar-14	Mar-14		Mar-14
1105	Way Station, Inc.	Ambulatory	Mar-13	Jan-14	Jan-14	Apr-13	Jan-14
1106	Wegmans Food Markets #40	Pharmacy		Apr-14			Apr-14
1107	Wegmans Food Markets #53	Pharmacy		Mar-14			Mar-14
1108	Wegmans Food Markets #54	Pharmacy		Mar-14			Mar-14
1109	Wegmans Food Markets #60	Pharmacy		Feb-14			Feb-14
1110	Wegmans Germantown	Pharmacy		Mar-14			Mar-14
1111	Wegmans Pharmacy #040	Pharmacy		Feb-14			Feb-14
1112	Wellspring Family Medicine PC	Ambulatory	Jun-12	Dec-12	Dec-12		
1113	Western Maryland Health System	Hospital	Jan-11	Jan-11	Jan-11		Apr-14
1114	Western Maryland Health System Pharmacy	Pharmacy		Feb-14			Feb-14
1115	Western Maryland Recovery Services	Ambulatory	Oct-13	Oct-13	Oct-13		
1116	Westside Medical, PC	Ambulatory		Apr-14			Apr-14
1117	Westview Urgent Care	Ambulatory		Apr-14			Apr-14
1118	Wexford Health Sources	Government Agency	Dec-12	Apr-13	Apr-13		Nov-13
1119	White Plains Primary Care	Ambulatory		Jan-14			Jan-14
1120	Whitesell's Pharmacy	Pharmacy		Feb-14			Feb-14
1121	Wicomico County Health Department	Government Agency	Jan-13	Apr-13	Apr-13		Nov-13
1122	William Russell, M.D.	Ambulatory		Apr-14			Apr-14
1123	Williamsport Pharmacy	Pharmacy		Mar-14			Mar-14
1124	Willie M. Yu MD PC	Ambulatory	Dec-13	Feb-14			Feb-14
1125	Women's Health Specialists	Ambulatory	Jul-12	Aug-12	Aug-12		Feb-14
1126	Womens International Pharmacy	Pharmacy		Mar-14			Mar-14
1127	Worcester County Health Department	Government Agency	Jan-13	Jul-13	Jul-13		Nov-13
1128	Your docs in - Easton	Ambulatory	Your Docs In - Salisbury	Mar-14	Mar-14		
1129	Your Docs In - Pocomoke	Ambulatory	Your Docs In - Salisbury	Mar-14	Mar-14		
1130	Your Docs In - Salisbury	Ambulatory	Dec-13	Feb-14	Mar-14		Mar-14
1131	Zenith Medical Care, LLC	Ambulatory	Jul-13				
Total**			369	1000	348	89	879

Key Terms and Notes:

CRISP Portal: The CRISP Portal is a standalone system available via the Internet that provides patient health information from Maryland hospitals and other providers who are connected to the HIE. Currently, select information is available via the portal, including patient demographics, laboratory results, radiology reports, discharge summaries, operative and consult notes, and medication fill history

Encounter Notification System (ENS): A system that notifies providers when one of their patients has an encounter at a Maryland hospital, which includes patient admission, discharge, and transfer activity

ENS Live: The number of organizations receiving ENS alerts

CRISP Portal, ENS & PDMP Adoption by Facility

Count	Organization	Type	Portal Participation Agreement	Training*	Portal Live*	ENS Live*	PDMP Access
-------	--------------	------	--------------------------------	-----------	--------------	-----------	-------------

ENS Live: The number of organizations receiving ENS alerts

Green Shading Indicates Completed: Practices that have completed the category are shaded green with the month indication of completion

Participation Agreement: Providers sign a participation agreement with CRISP in order to query the CRISP Portal. Multiple facilities or organizations can be covered under a single Participation Agreement (e.g. MedStar); entries containing an organization name in the Portal Participation Agreement field indicate the name of the organization that holds the Participation Agreement. Pharmacies are exempt from signing a Participation Agreement.

Patient Education: Education materials are provided to practices to hand out to patients regarding the CRISP Portal before a practice may begin using the Portal

PDMP (Prescription Drug Monitoring Program) Access: Number of organizations using PDMP services; records of prescribing and dispensing of controlled dangerous substances available in CRISP query portal that went live as a pilot in November 2013

Portal Live: An organization has completed the credentialing, legal, and training process and has at least one user approved to use the Portal

Portal Training: CRISP provides training to clinical providers in order for participants to learn how to access clinical information in real-time Training includes information about accessing the Portal and patient education. Training is the first person trained at the facility

* Although most providers/practices follow a sequence (provider agreement, training, usage), some practices completed the steps in a different order; metrics in chart represent a snapshot of CRISP data available at the end of each month, certain dates may fluctuate from month to month

** Fluctuation in totals due to revised CRISP reporting process in April 2014

CRISP Other Projects

#	Project Name	Project Description
1	Regional Extension Center Operations	Provides support to 1,000 small practices to achieve meaningful use by providing direct technical assistance through Management Service Organizations
2	Direct Secure Messaging	Provides the ability for an individual clinician or organization to send or receive Secure Email, to support a variety of clinical purposes
3	State Innovation Model (SIM) Reporting and Mapping	Partnering with the Department of Health and Mental Hygiene (DHMH) on the development of hospital encounter reporting and mapping capabilities to support the community integrated medical home model
4	Health Enterprise Zone (HEZ) Dash-boarding and Mapping	Leveraging the capabilities developed under the SIM grant, to offer dash-boarding and technical assistance for the HEZ program
5	Prescription Drug Monitoring Program (PDMP)	The PDMP makes records of the prescribing and dispensing of controlled dangerous substances available in the CRISP Query Portal, in an effort to stem the rise of prescription drug abuse and diversion. The PDMP project went live in mid-December.
6	Health Benefit Exchange (HBE) - Provider Information Management	CRISP is obtaining provider information from the Qualified Health Plans participating in Maryland's HBE and partnering with Optum to produce a verified provider demographics source so that consumers of the HBE can search for health insurance plans by provider name
7	HBE - All Payer Claims Database Unique Identifier	Relying on the Initiate Master Patient Index, CRISP is attaching a unique patient identifier to carrier eligibility files sent to MHCC to enable insights into member churn between commercial Qualified Health Plans and Medicaid
8	HBE - Care Summary	In its early stage, this project would allow a new enrollee in a health plan to choose to send prior clinical records to care coordinators affiliated with their new health plan, such that proactive services may be provided in advance of a new billing history building up
9	Public Health - Electronic Lab Reporting	To support reporting for the public health meaningful use measure, CRISP is sending a copy of electronic reportable labs to the State via Health Level Seven (HL7), providing assistance with the formatting of the lab messages as necessary
10	Public Health - Immunization Reporting	Hospitals will send Immunization messages via HL7 to CRISP which will pass them along to the State to a Secure File Transfer Protocol (SFTP) location
11	Public Health - Syndromic Surveillance	CRISP will send a copy of existing discharge (A04) and update (A08) messages to DHMH via HL7 to an SFTP location, providing assistance with the formatting of the admission, discharge, and transfer (ADT) messages as necessary
12	Department of Public Safety and Correctional Services Query	Providing access to the CRISP Query Portal for Department of Corrections and users at the locked ward at Bon Secours Hospital
13	Single Sign On	Implementing additional HIE capabilities to Medicaid providers, such as single sign on to the HIE
14	DC Hospital Integration	Working with DC Department of Health Care Finance (DHCF) to support DC acute care hospital connectivity with the CRISP HIE infrastructure
15	Medicaid Outreach DHMH	Partnered with DHMH for outreach to eligible professionals and hospitals in regards to the Medicaid Meaningful Use Incentives Program in Maryland