

CRISP Monthly Reports

March 2014

The Chesapeake Regional Information System for our Patients (CRISP), the State-Designated health information exchange (HIE), submits monthly status reports to the Maryland Health Care Commission (MHCC). The monthly reports provide updates to the HIE program and use of HIE services, and the Regional Extension Center (REC) program. The MHCC's Center for Health Information Technology & Innovative Care Delivery uses the information to facilitate development of the State-Designated HIE, craft policy around privacy and security, and develop initiatives to expand health information technology adoption, including electronic health record adoption and meaningful use.

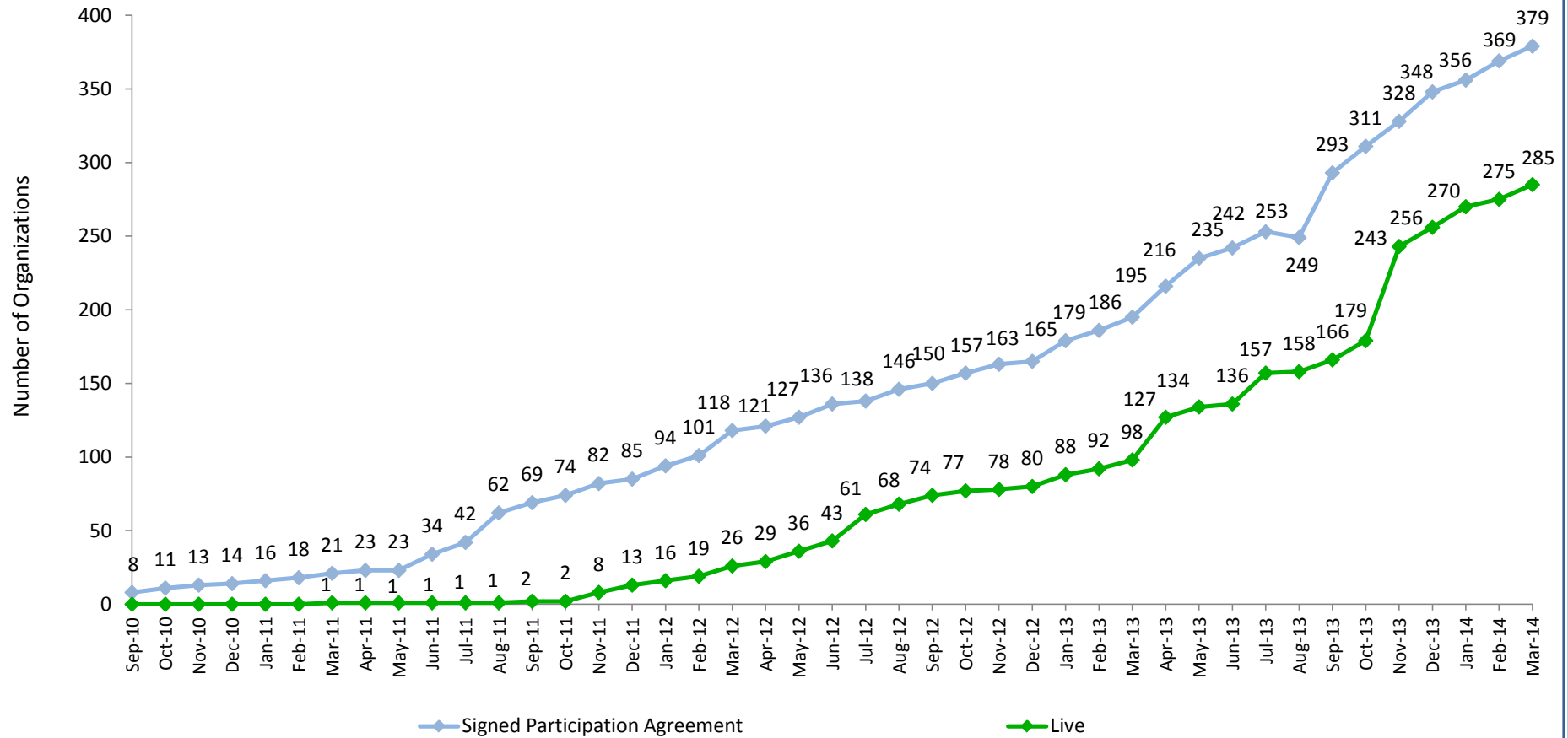
At a Glance					
HIE Category	New January	New February	New March	Total* #	Total* %
Ambulatory Practice Data Consumption (# of organizations) N=6,537					
Signed participation agreements - CRISP Portal	5	11	6	226	3.5%
CRISP portal live	12	6	5	185	2.8%
Direct message accounts live	23	10	27	247	3.8%
Encounter notification service live	1	2	3	54	0.8%
Hospital Data Submission (# of hospitals) N=46					
Laboratory reports	0	0	1	32	70%
Radiology reports	2	0	0	38	83%
Transcribed reports	0	2	0	35	78% ¹
Long Term Care Data Consumption (# of organizations) N=235					
Signed participation agreements - CRISP Portal	0	1	0	39	17%
CRISP portal live	2	0	0	21	9%
Encounter notification service live	0	0	0	6	3%
Query Portal Usage					
Number of CRISP Portal queries ²	21,010	24,401	33,096		
Single-sign on live in Maryland hospitals	0	0	0	5	11%

*Totals are cumulative

Notes:

- Garrett County Memorial Hospitals has no plans to submit transcribed reports to CRISP
- Number of CRISP Portal queries not listed in Total # and Total % columns because CRISP Portal queries are not calculated based on a cumulative total over time

CRISP Portal Adoption

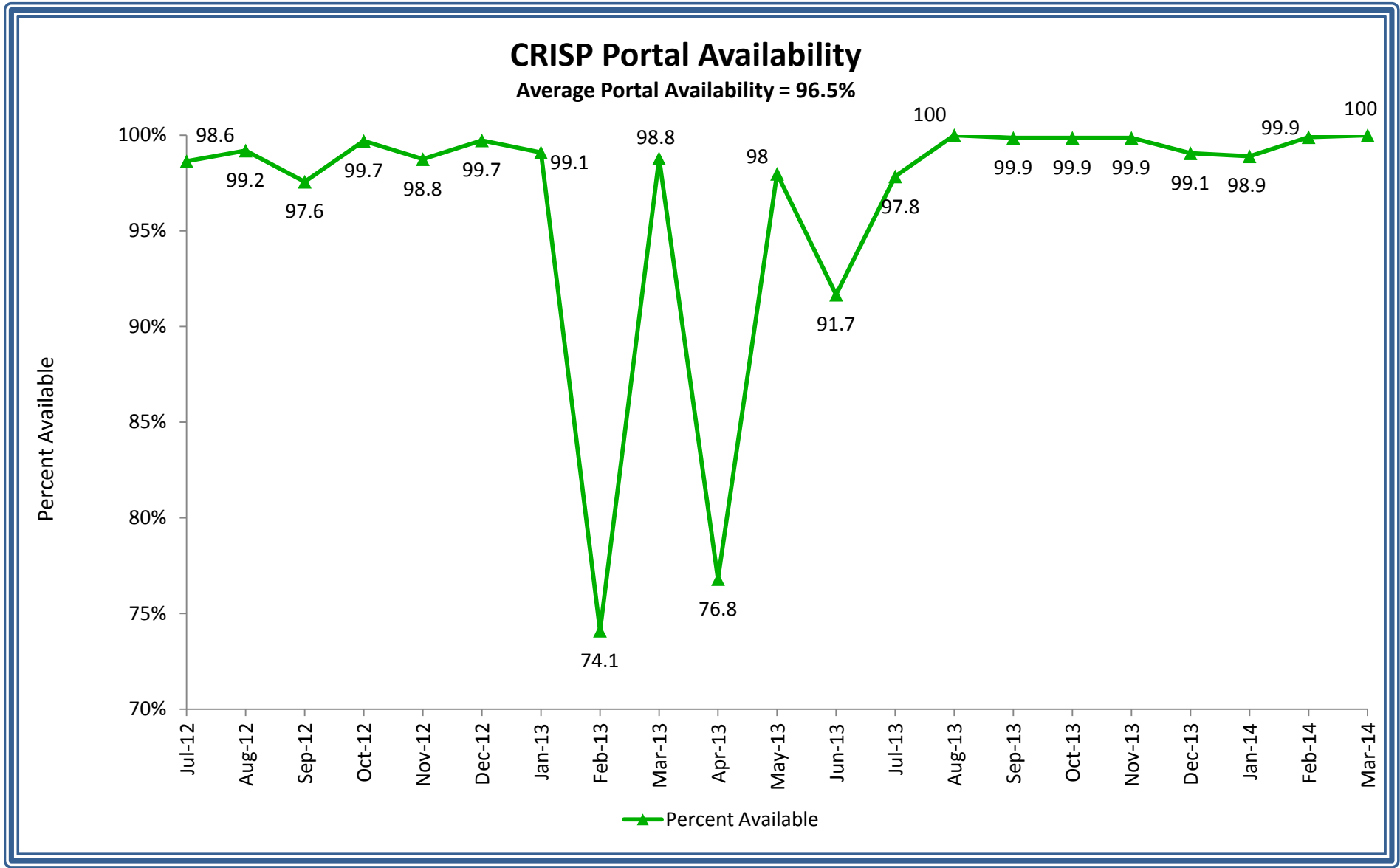


Key Terms:

CRISP Portal: A standalone web-based system that contains patient health information from Maryland hospitals and other providers connected to the HIE. Information available via the portal includes patient demographics, laboratory results, radiology reports, discharge summaries, operative and consult notes, and medication fill history

Participation Agreement: Providers sign a participation agreement with CRISP in order to query the CRISP Portal

Live: An organization has completed the credentialing, legal, and training process and has at least one user approved to use the Portal



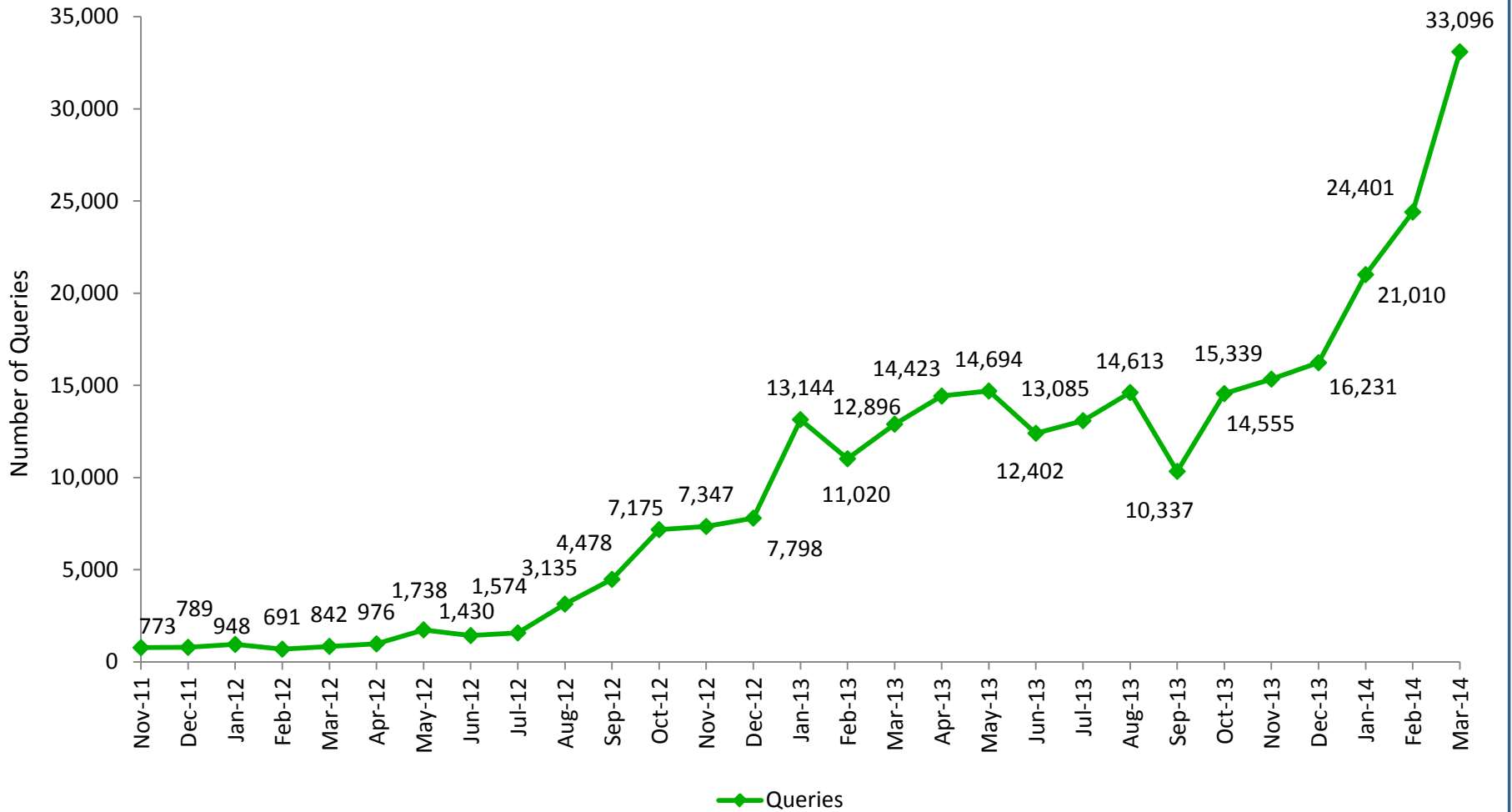
Key Terms:

CRISP Portal: A standalone web-based system that contains patient health information from Maryland hospitals and other providers connected to the HIE. Information available via the portal includes patient demographics, laboratory results, radiology reports, discharge summaries, operative and consult notes, and medication fill history

Portal Availability: The percent of hours that the portal is live out of all possible hours in a month

Percent Available: The percent of hours that the portal is available during the month

CRISP Portal Queries



Key Terms:

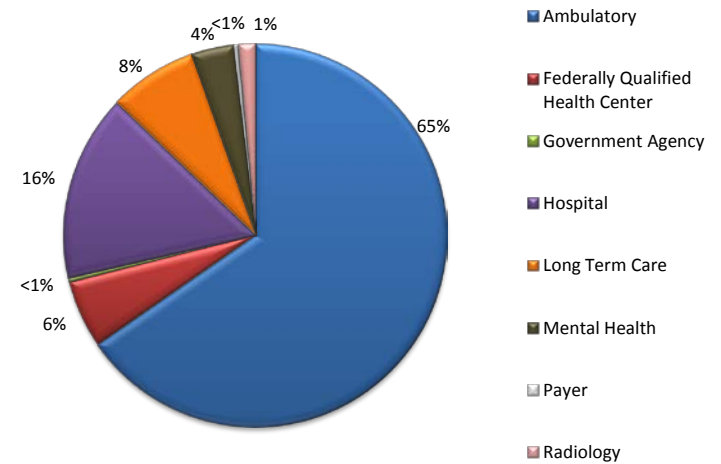
CRISP Portal: The CRISP Portal is a standalone system available via the Internet that provides patient health information from Maryland hospitals and other providers who are connected to the HIE. Currently, select information is available via the portal, including patient demographics, laboratory results, radiology reports, discharge summaries, operative and consult notes, and medication fill history

Queries: Number of searches within the CRISP Portal per month

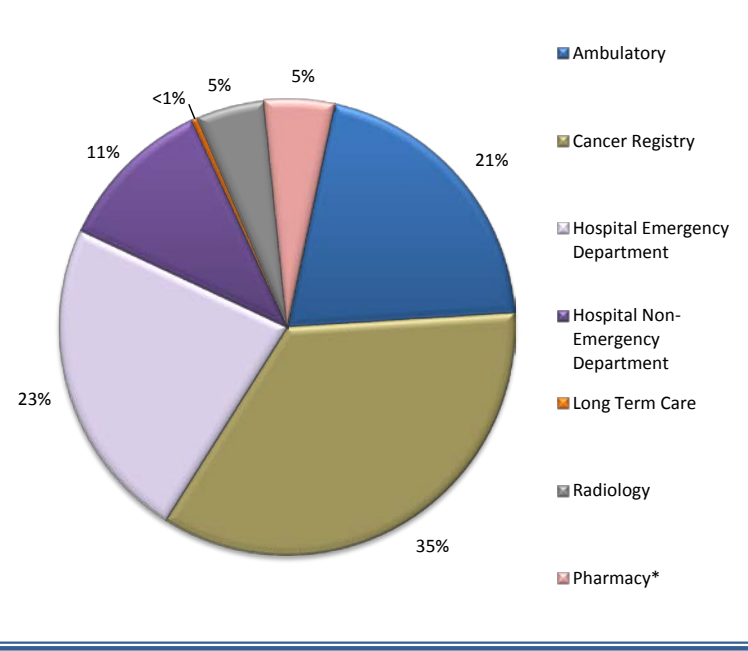
CRISP Portal Queries by Provider Type

Month	Provider Type										Total
	Ambulatory	Cancer Registry	Hospital Emergency Department	Hospital Non-Emergency Department	Long Term Care	Radiology	Pharmacy*				
Apr-12	#	315	213	285	25	79	58	-	-	-	976
	%	32	22	29	3	8	6	-	-	-	100
May-12	#	388	722	427	42	91	68	-	-	-	1,738
	%	22	42	25	2	5	4	-	-	-	100
Jun-12	#	331	475	315	38	181	88	-	-	-	1,430
	%	23	33	22	3	13	6	-	-	-	100
Jul-12	#	527	459	382	49	9	149	-	-	-	1,574
	%	33	29	24	3	1	9	-	-	-	100
Aug-12	#	1,027	715	781	96	17	499	-	-	-	3,135
	%	33	23	25	3	1	16	-	-	-	100
Sep-12	#	1,024	2,110	992	0	17	334	-	-	-	4,478
	%	23	47	22	0	0	7	-	-	-	100
Oct-12	#	1,449	3,890	1,193	176	19	448	-	-	-	7,175
	%	20	54	17	2	0	6	-	-	-	100
Nov-12	#	1,930	3,218	1,465	189	14	531	-	-	-	7,347
	%	26	44	20	3	0	7	-	-	-	100
Dec-12	#	1,955	2,948	1,516	233	53	1,093	-	-	-	7,798
	%	25	38	19	3	1	14	-	-	-	100
Jan-13	#	2,066	6,982	1,955	455	40	1,646	-	-	-	13,144
	%	16	53	15	3	0	13	-	-	-	100
Feb-13	#	1,414	6,176	1,987	596	61	786	-	-	-	11,020
	%	13	56	18	5	1	7	-	-	-	100
Mar-13	#	1,956	6,122	3,103	891	31	793	-	-	-	12,896
	%	15	47	24	7	0	6	-	-	-	100
Apr-13	#	2,137	7,017	3,370	1,056	60	783	-	-	-	14,423
	%	15	49	23	7	0	5	-	-	-	100
May-13	#	1,606	7,922	3,507	979	105	575	-	-	-	14,694
	%	11	54	24	7	1	4	-	-	-	100
Jun-13	#	1,831	5,630	3,256	1,023	65	597	-	-	-	12,402
	%	15	45	26	8	1	5	-	-	-	100
Jul-13	#	2,323	6,003	3,027	1,180	19	533	-	-	-	13,085
	%	18	46	23	9	0	4	-	-	-	100
Aug-13	#	2,065	7,623	2,858	1,376	118	573	-	-	-	14,613
	%	14	52	20	9	1	4	-	-	-	100
Sep-13	#										10,337
	%										
Oct-13	#	3,114	4,116	3,231	3,150	53	618	273	-	-	14,555
	%	21	28	22	22	0	4	2	-	-	100
Nov-13	#	2,378	5,111	3,993	2,951	8	491	407	-	-	15,339
	%	16	33	26	19	0	3	3	-	-	100
Dec-13	#	3,150	4,407	4,723	2,986	8	400	557	-	-	16,231
	%	19	27	29	18	0	2	3	-	-	100
Jan-14	#	6,773	2,766	5,995	3,510	17	636	1,313	-	-	21,010
	%	32	13	29	17	0	3	6	-	-	100
Feb-14	#	7,047	3,409	6,014	3,908	56	464	3,503	-	-	24,401
	%	34	16	29	19	0	2	17	-	-	100
Mar-14	#	8,333	5,086	6,949	4,828	81	646	7,173	-	-	33,096
	%	40	24	33	23	0	3	34	-	-	136
Total	#	55,140	93,121	61,324	29,737	1,202	12,810	13,226	-	-	276,897
Monthly Average	#	2,397	4,049	2,666	1,293	52	557	2,204	-	-	11,537

Types of Providers with Access to the CRISP Portal



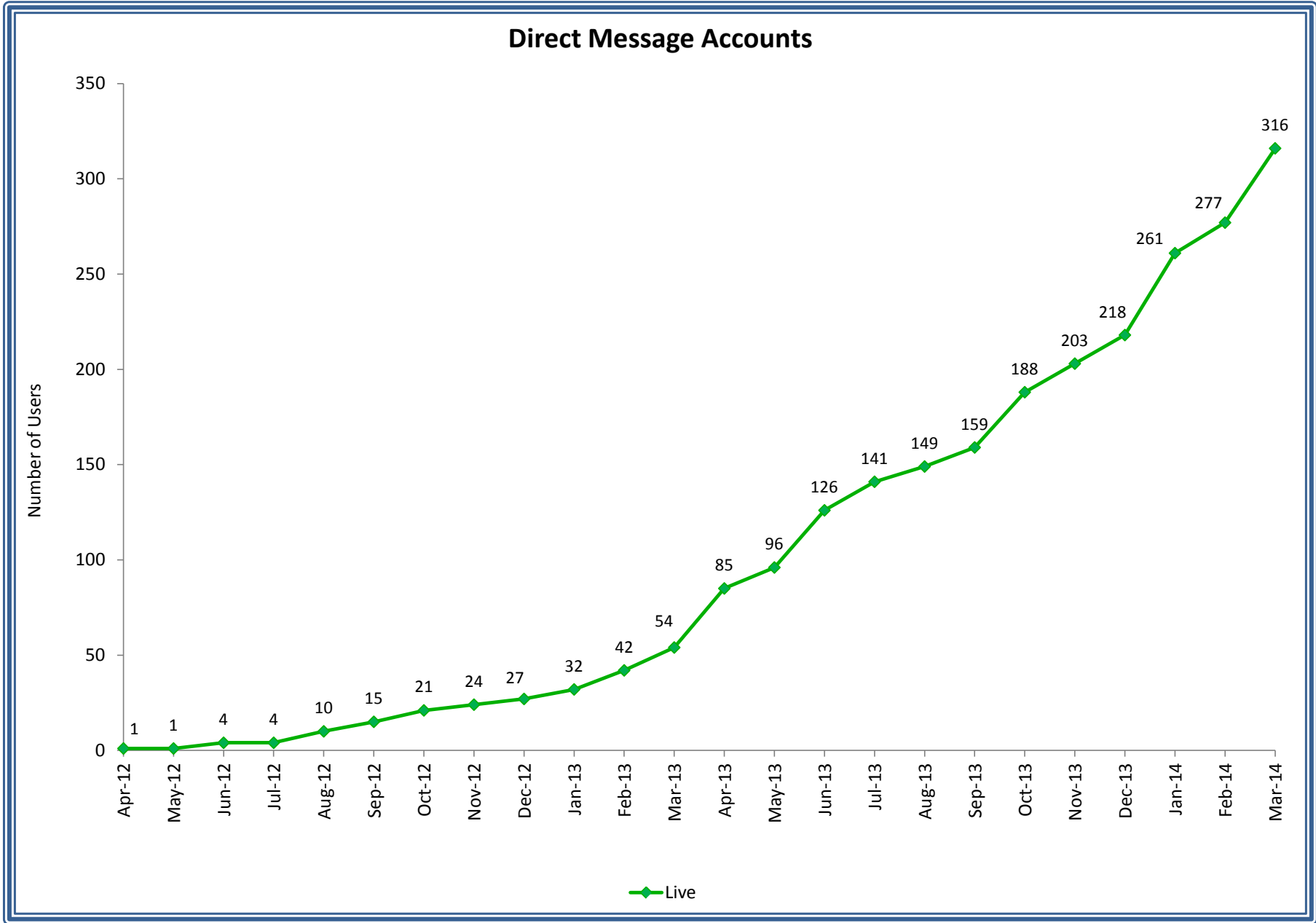
Total CRISP Portal Queries by Provider Type



Key Terms:

CRISP Portal: The CRISP Portal is a standalone system available via Internet that provides patient health information from Maryland hospitals and other providers connected to the HIE. Currently, select information is available via the portal, including patient demographics, laboratory results, radiology reports, discharge summaries, operative and consult notes, and medication fill history

Queries: Number of searches within the CRISP Portal per month

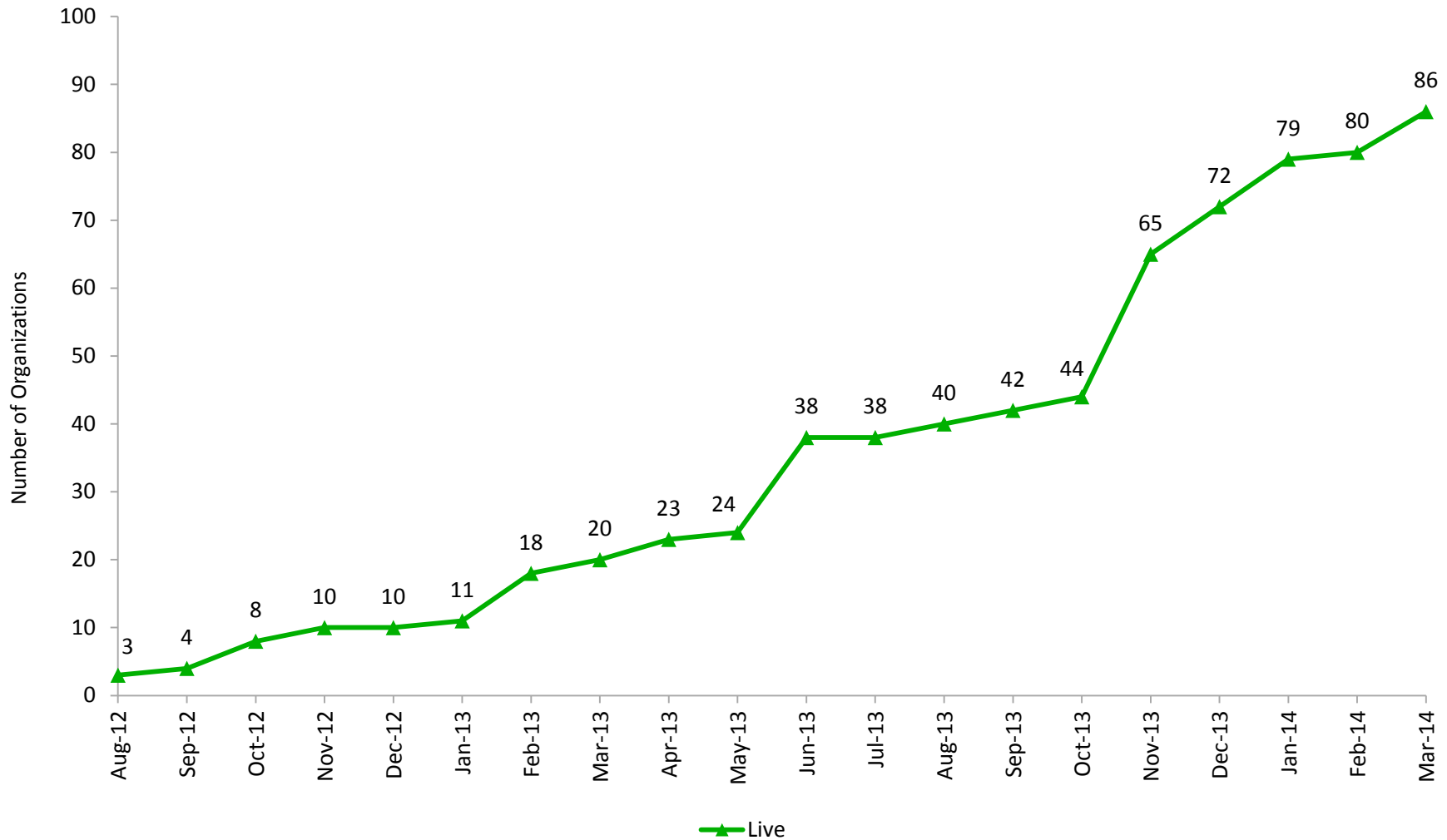


Key Terms:

Direct Message Accounts: A secure and encrypted e-mail service that supports electronic communication between health care providers

Live: Users live with a CRISP Direct Messaging account

Encounter Notification Service Adoption



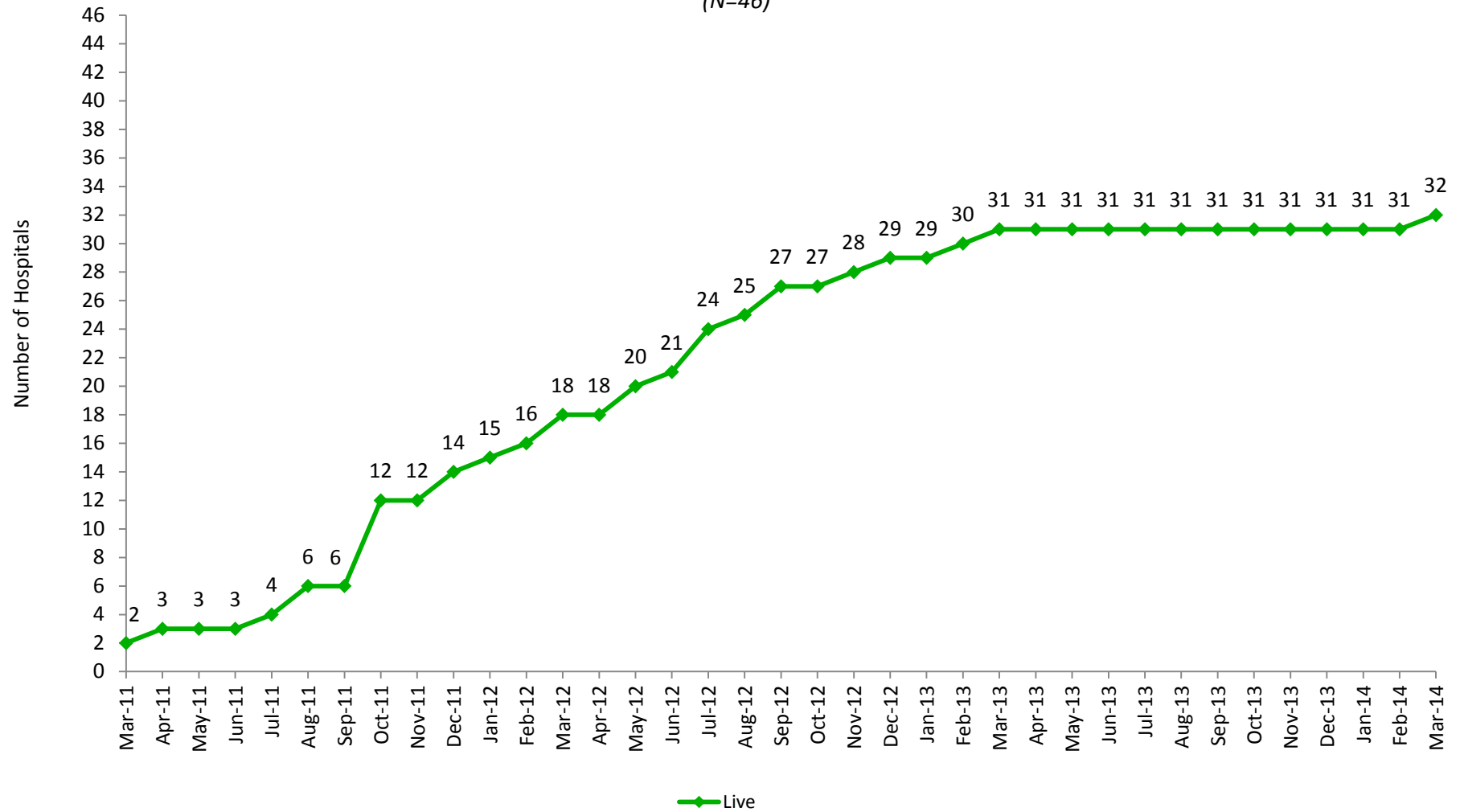
Key Terms:

Encounter Notification System (ENS): A system that notifies providers when one of their patients has an encounter at a Maryland hospital, which includes patient admission, discharge, and transfer activity

Live: The number of organizations receiving ENS alerts

Hospital Data Submission Laboratory Reports Live

(N=46)



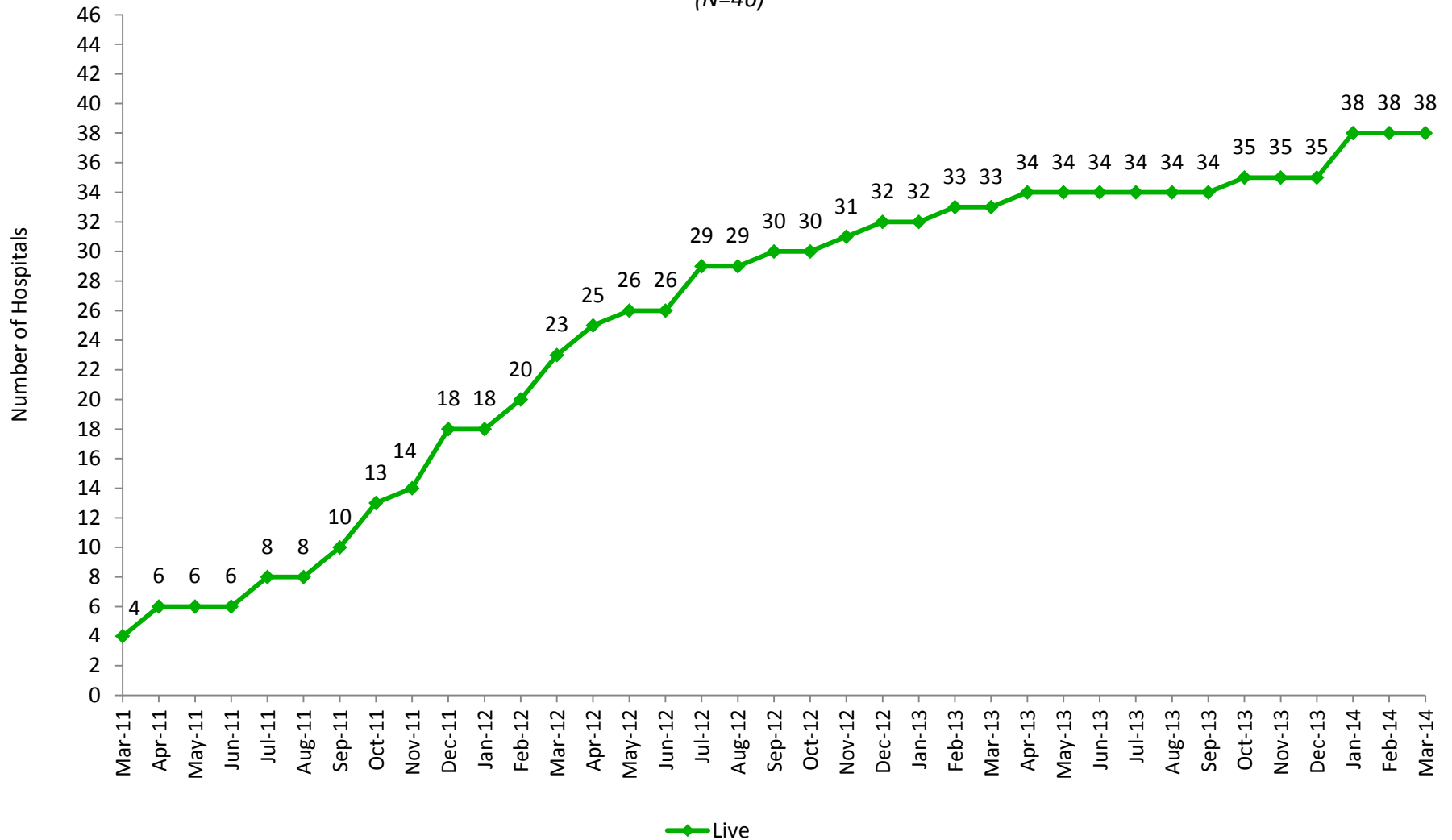
Key Terms:

Live: The number of hospitals using the laboratory documents exchange service

N: The number of acute care hospitals in Maryland

Hospital Data Submission Radiology Reports Live

(N=46)



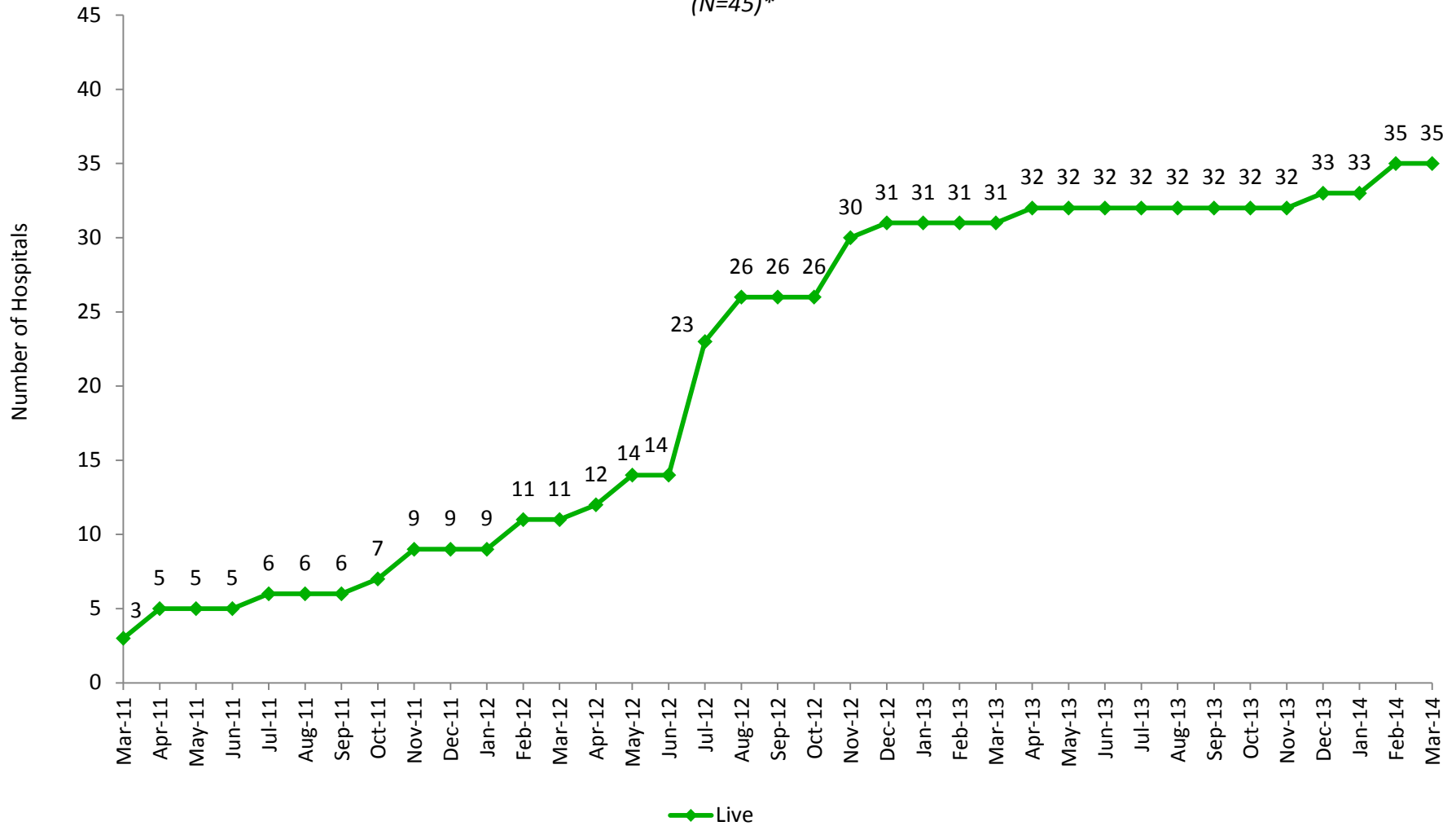
Key Terms:

Live: The number of hospitals using the radiology documents exchange service

N: The number of acute care hospitals in Maryland

Hospital Data Submission Transcribed Reports Live

(N=45)*



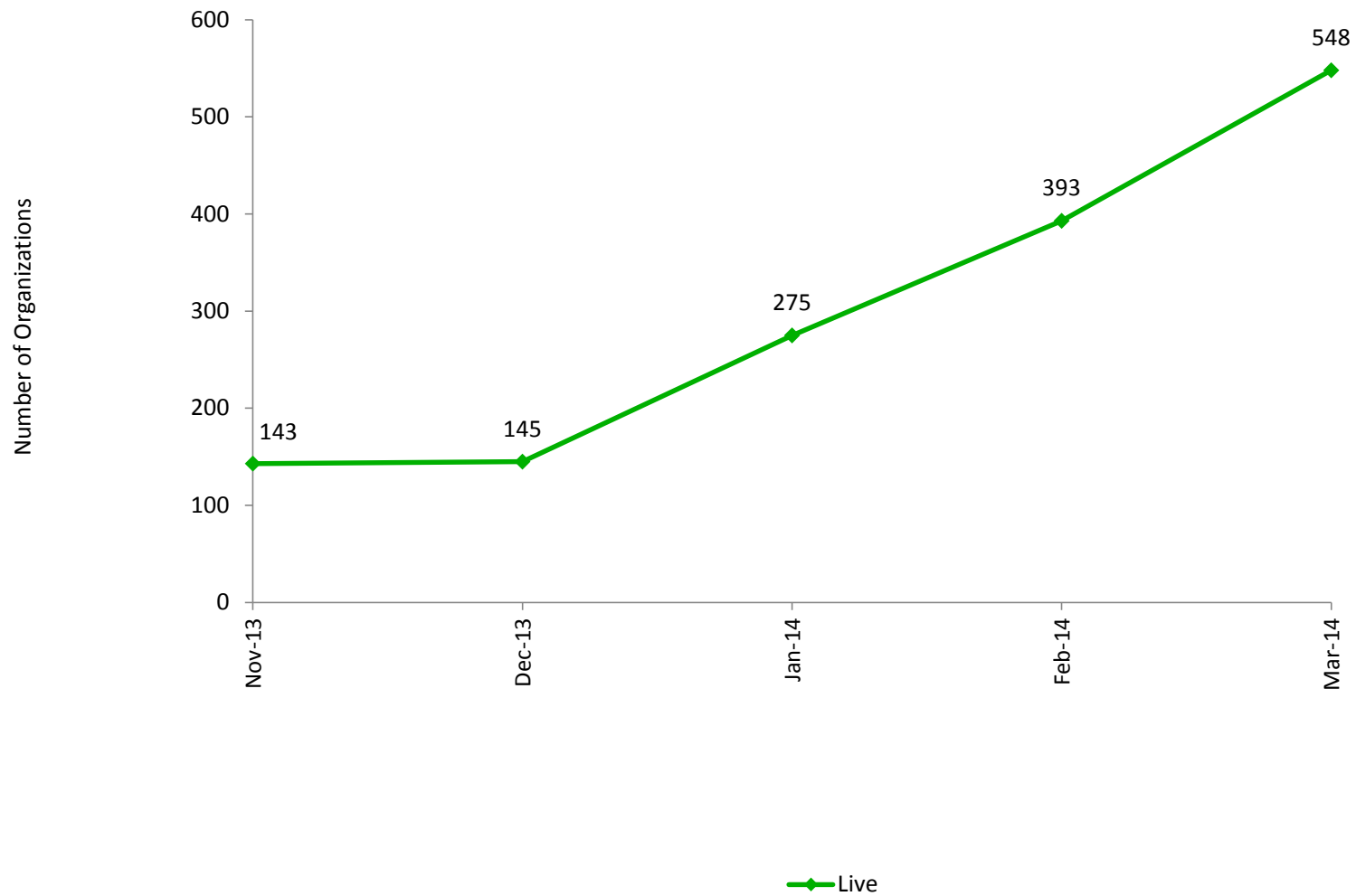
Key Terms:

Live: The number of hospitals using the transcribed exchange service

N: The number of acute care hospitals in Maryland

*Garrett County Memorial Hospital has no plans to submit transcribed reports to CRISP

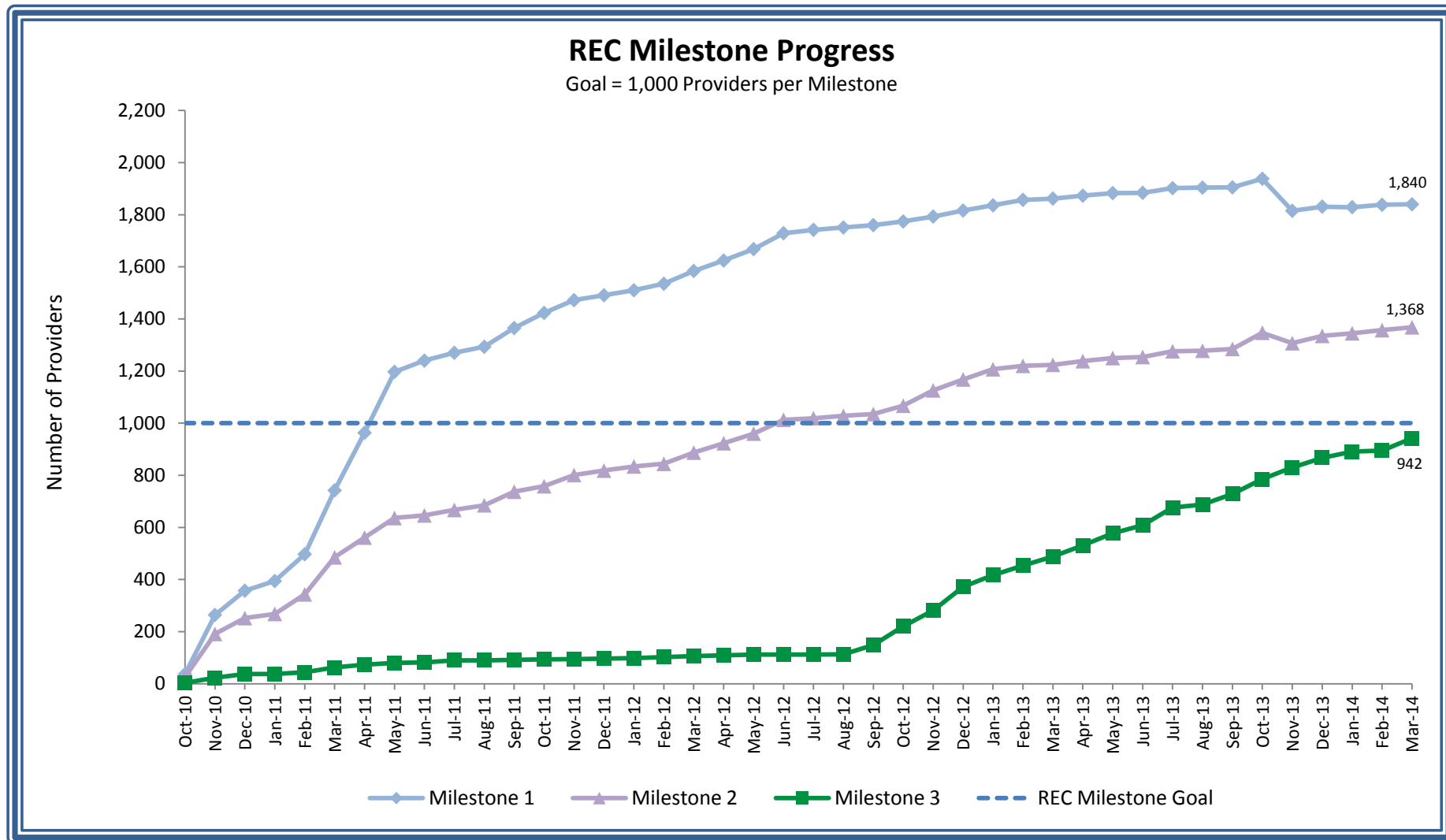
Prescription Drug Monitoring Program



Key Terms:

Live: The number of organizations using the PDMP services

Prescription Drug Monitoring Program: Records of prescribing and dispensing of controlled dangerous substances available in CRISP query portal that went live as a pilot in November 2013



Key Terms:

REC: The Regional Extension Center (REC) provides technical assistance to priority primary care providers (PCPs) in adopting and using an electronic health record (EHR)

Milestone 1: A PCP that has signed a participation agreement with a management service organization

Milestone 2: A PCP that has adopted an EHR and is using certain functionalities of the system

Milestone 3: A PCP that has achieved meaningful use defined by the Centers for Medicare & Medicaid Services

REC Milestone Goal: The milestone goal was established by the Office of the National Coordinator for Health Information Technology

REC Progress						
Milestone	Provider did not have an EHR at sign up with the program		Provider had an EHR when signed up with the program		Total	
	#	%	#	%	#	%
Milestone 1	733	40	1,107	60	1,840	184
Milestone 2	687	50	681	50	1,368	137
Milestone 3	450	48	492	52	942	94

Key Terms:

REC: The Regional Extension Center (REC) provides technical assistance to priority primary care providers (PCPs) in adopting and using an electronic health record (EHR)

Milestone 1: A PCP that has signed a participation agreement with a management service organization

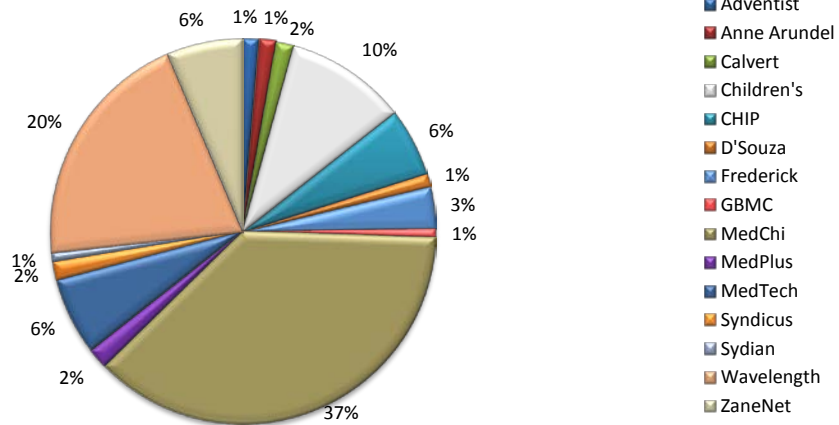
Milestone 2: A PCP that has adopted an EHR and is using certain functionalities of the system

Milestone 3: A PCP that has achieved meaningful use defined by the Centers for Medicare & Medicaid Services

REC Milestone Goal: The milestone goal was established by the Office of the National Coordinator for Health Information Technology

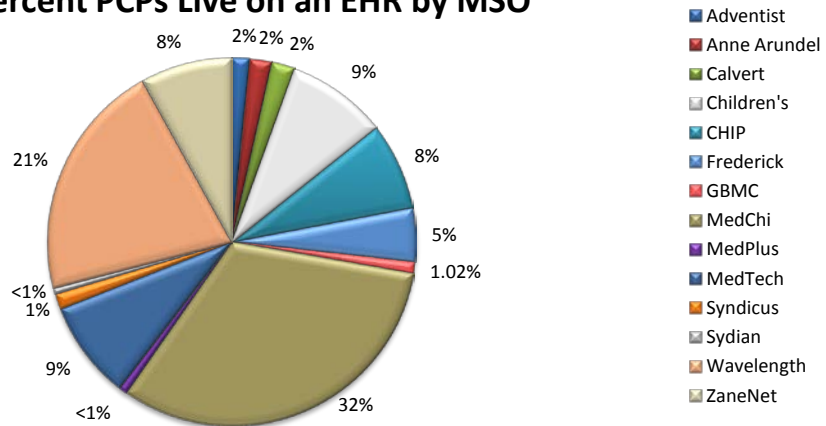
Maryland REC Progress - Milestone 1 Percent PCPs Participating by MSO

Total PCPs signed up with an MSO: 1,840



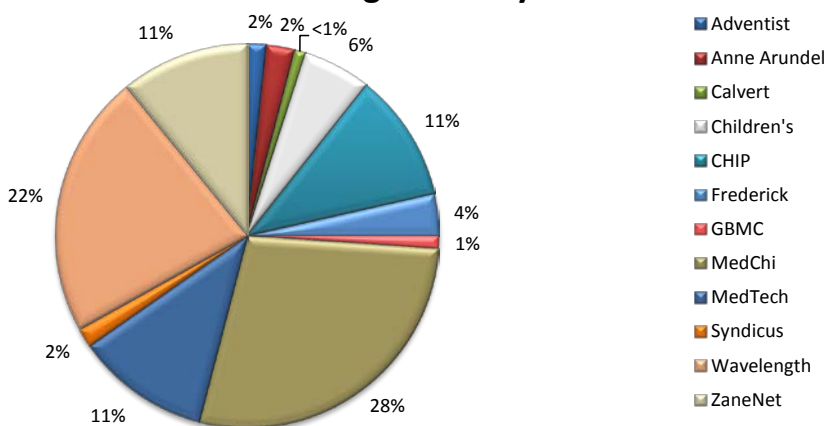
Maryland REC Progress - Milestone 2 Percent PCPs Live on an EHR by MSO

Total PCPs live on an EHR: 1,368



Maryland REC Progress - Milestone 3 Percent PCPs Achieved Meaningful Use by MSO

Total PCPs achieved meaningful use: 942



Key Terms:

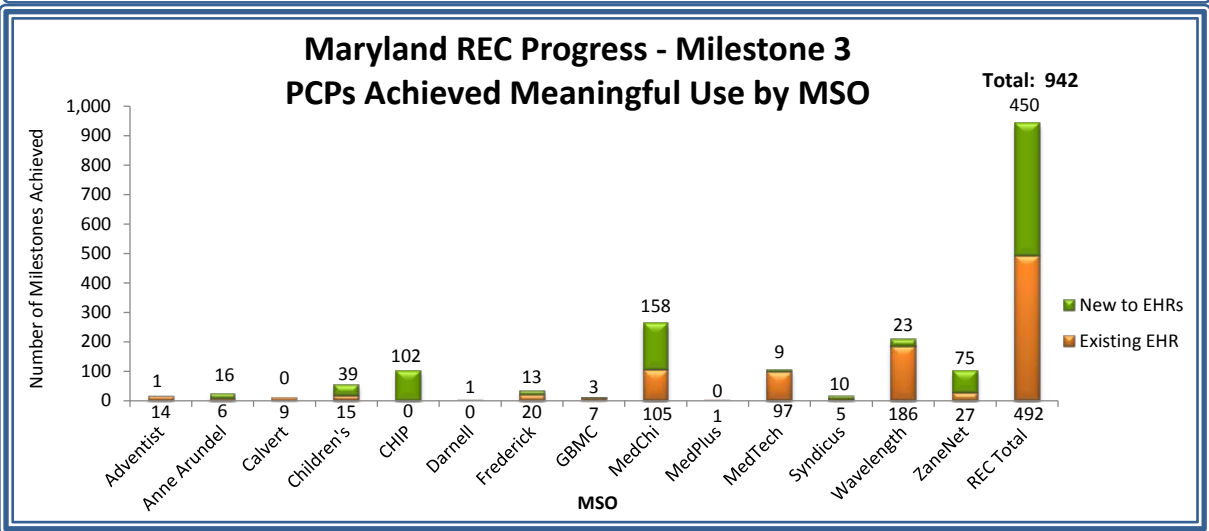
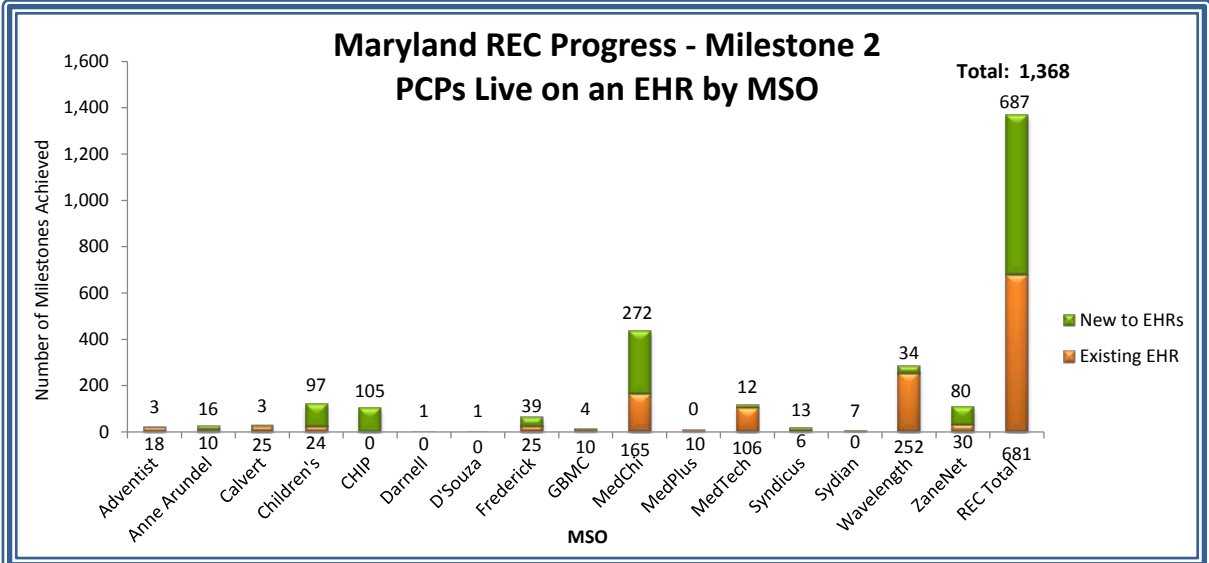
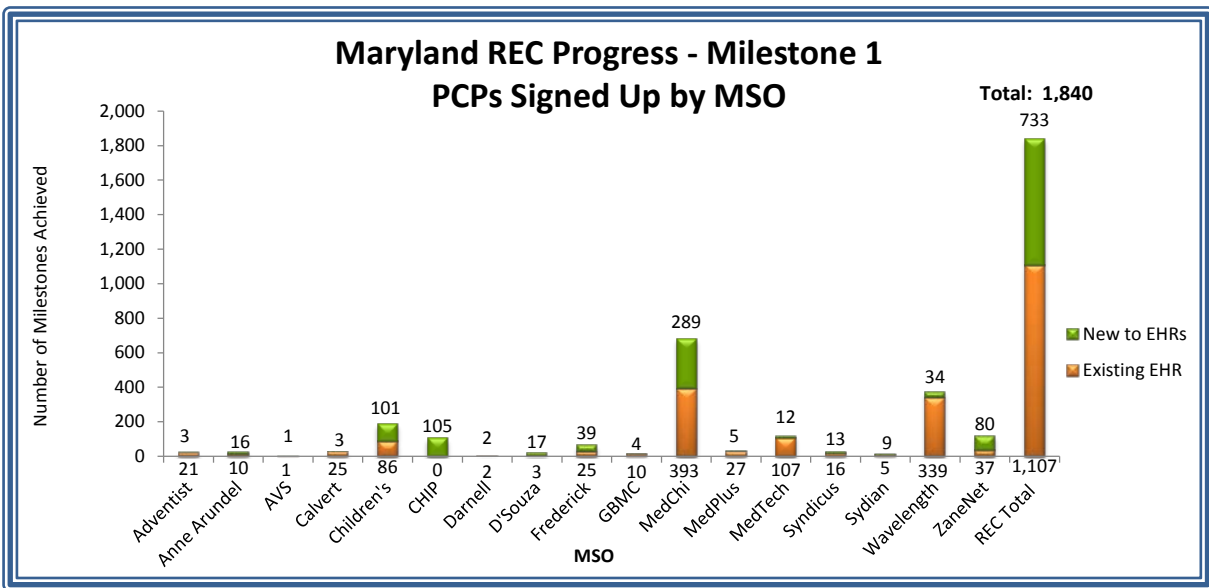
REC: The Regional Extension Center (REC) provides technical assistance to priority primary care providers (PCPs) in adopting and using an electronic health record (EHR)

Milestone 1: A PCP that has signed a participation agreement with a management service organization (MSO)

Milestone 2: A PCP that has adopted an EHR and is using certain functionalities of the system

Milestone 3: A PCP that has achieved meaningful use defined by the Centers for Medicare & Medicaid Services

Primary care provider: Primary-care providers in individual and small group practices (fewer than 10 physicians and/or other health care professionals with prescriptive privileges) primarily focused on primary care; and physicians, physician assistants, or nurse practitioners who provide primary care services in public and critical access hospitals, community health centers, rural health clinics, and in other settings that predominantly serve uninsured, underinsured, and medically underserved populations



Key Terms:

REC: The Regional Extension Center (REC) provides technical assistance to priority primary care providers (PCPs) in adopting and using an electronic health record (EHR)

Milestone 1: A PCP that has signed a participation agreement with a management service organization (MSO)

Milestone 2: A PCP that has adopted an EHR and is using certain functionalities of the system

Milestone 3: A PCP that has achieved meaningful use defined by the Centers for Medicare & Medicaid Services

Primary care provider: Primary-care providers in individual and small group practices (fewer than 10 physicians and/or other health care professionals with prescriptive privileges) primarily focused on primary care; and physicians, physician assistants, or nurse practitioners who provide primary care services in public and critical access hospitals, community health centers, rural health clinics, and in other settings that predominantly serve uninsured, underinsured, and medically underserved populations

Hospital Data Submission and Use

Count	Hospital	Current Status of Data Submission			Use of Services		
		Laboratory Reports	Radiology Reports	Transcribed Documents	Portal Live	Portal - Single Sign On*	ENS
1	Anne Arundel Medical Center	Mar-12	Mar-12	42	Jul-12	7	Sep-13
2	Atlantic General Hospital	Jun-11	Jun-11	Jun-11	Mar-12	7	19
3	Baltimore Washington Medical Center	42	Jan-14	42	Mar-12	7	19
4	Bon Secours Baltimore Health System	Feb-13	Feb-13	Feb-14	Jan-13	7	19
5	Calvert Memorial Hospital	Dec-12	Dec-12	Dec-12	Feb-13	7	19
6	Carroll Hospital Center	May-12	Apr-12	Apr-12	Jul-12	7	19
7	Doctors Community Hospital	Sep-12	Sep-13	Dec-13	Apr-13	7	Jun-13
8	Edward McCready Memorial Hospital	Aug-12	42	42	Feb-14	7	19
9	Fort Washington Medical Center	Sep-12	Mar-12	May-12	Sep-12	7	19
10	Frederick Memorial Hospital	Mar-12	Dec-11	42	Jul-12	7	19
11	Garrett County Memorial Hospital	Jun-11	Apr-12		Jan-14	7	19
12	Greater Baltimore Medical Center	Nov-12	Sep-12	Sep-12	Jun-12	7	19
13	Harford Memorial Hospital	Jul-12	Jul-12	Jul-12	Aug-12	7	19
14	Holy Cross Hospital	Sep-10	Sep-10	Sep-10	Dec-11	7	19
15	Howard County General Hospital	Feb-12	Nov-11	Nov-11	Mar-12	7	19
16	Johns Hopkins Bayview Medical Center	42	Feb-12	Jul-12	Apr-12	7	Mar-14
17	Johns Hopkins Hospital	42	Dec-11	May-12	Jul-12	7	19
18	Laurel Regional Hospital	42	42	Jul-12	Sep-13	7	19
19	MedStar Franklin Square Medical Center	Oct-11	Oct-11	Nov-12	Jul-12	Apr-13	Jan-14
20	MedStar Good Samaritan Hospital	Oct-11	Oct-11	Nov-12	Jun-12	Apr-13	19
21	MedStar Harbor Hospital	Oct-11	Sep-12	Nov-12	Mar-12	Apr-13	Aug-12
22	MedStar Montgomery Medical Center	Mar-13	Apr-11	Apr-11	Feb-12	Apr-13	19
23	MedStar Southern Maryland Hospital Center	42	Jul-11	Nov-11	Feb-13	7	19
24	MedStar St. Mary's Hospital	Jun-12	Mar-12	Dec-12	Jun-13	7	19
25	MedStar Union Memorial Hospital	Oct-10	Oct-10	Nov-12	May-12	Apr-13	19
26	Mercy Medical Center	42	Nov-12	42	Aug-12	7	19
27	Meritus Medical Center	Jul-12	Jul-12	Jul-12	Sep-12	7	19
28	Northwest Hospital Center	Dec-11	Dec-11	Aug-12	Sep-12	7	19
29	Peninsula Regional Medical Center	42	42	42	Sep-13	7	19
30	Prince George's Hospital Center	42	42	Jul-12	Apr-13	7	19
31	Shady Grove Adventist Hospital	Nov-11	Dec-10	Dec-11	Dec-11	7	Sep-13
32	Sinai Hospital	Dec-11	Dec-11	Aug-12	Sep-12	7	19
33	St. Agnes Hospital	Feb-12	Feb-12	Feb-12	Dec-12	7	19
34	Suburban Hospital	Oct-10	Oct-10	Oct-10	Sep-11	7	19
35	Union Hospital Cecil County	Aug-11	Sep-11	Sep-11	Sep-12	7	19
36	University of Maryland Charles Regional Medical Center	42	42	42	Jan-13	7	19
37	University of Maryland Medical Center	Mar-14	Jan-14	Jul-12	Jul-12	7	19
38	University of Maryland Medical Center Midtown Campus	42	Apr-13	Apr-13	Feb-13	7	19
39	University of Maryland Rehabilitation & Orthopedic Institute	42	Jan-14	Jul-12	Feb-14	7	19
40	University of Maryland Shore Medical Center at Chestertown	42	42	42	Mar-13	7	19
41	University of Maryland Shore Medical Center at Dorchester	42	42	42	Jan-14	7	19
42	University of Maryland Shore Medical Center at Easton	42	42	42	Oct-13	7	19
43	University of Maryland St. Joseph Medical Center	May-12	May-12	Feb-14	May-12	7	Aug-12
44	University of Maryland Upper Chesapeake Health	Jul-12	Jul-12	Jul-12	Aug-12	7	19
45	Washington Adventist Hospital	Nov-11	Dec-10	Dec-10	Apr-11	7	19
46	Western Maryland Health System	Mar-11	Mar-11	Feb-12	Jan-12	7	19

Key	Total Number of Hospitals in Current Status			Total Number of Hospitals Using Services		
	Laboratory Reports	Radiology Reports	Transcribed Documents	Portal	Portal - SSO	ENS
Not Live (months in current status)	14	8	10	0	41	39
Data Quality Assurance & Monitoring (months in current status) <i>Hospitals standardizing and mapping data for transmission</i>	0	0	0	N/A	N/A	N/A
Live <i>The number of hospitals that have successfully completed the above listed activities and the date the hospital went live</i>	32	38	35	46	5	7
No plans to provide data feed	0	0	1	N/A	N/A	N/A

*Note: Pilot for Single Sign On to Portal launched in April 2013 and offered to all hospitals starting in September 2013

CRISP Portal, ENS & PDMP Adoption by Facility

Count	Organization	Type	Portal Participation Agreement*	Training*	Portal Live*	ENS Live*	PDMP Access
1	Aberdeen Family Practice	Ambulatory					Jan-14
2	Absolute Care of Baltimore	Ambulatory	Feb-14		Feb-14		Nov-13
3	Access Carroll	Ambulatory					Feb-14
4	Access Family Practice	Ambulatory					Jan-14
5	Accokeek Drug and Health Care Inc.	Pharmacy		Nov-13			Nov-13
6	Achor Care Pharmacy	Pharmacy					Jan-14
7	Advanced Diagnostic Radiology	Radiology	Mar-12				
8	Advanced Internal Medicine	Ambulatory	Jan-13	Jan-13	Jan-13		Nov-13
9	Advanced Pain and Spine	Ambulatory					Jan-14
10	Advanced Primary & Geriatric Care	Ambulatory	Feb-14				
11	Advanced Radiology	Radiology	Sep-10	Mar-12	Mar-12		
12	Adventist Medical Group - Medical Faculty Associates	Ambulatory					Nov-13
13	AGHS Berlin Primary Care	Ambulatory	Aug-11	Jun-13	Jun-13		
14	AGHS Townsend Medical Center	Ambulatory	Mar-12				
15	Airpark Primary Care	Ambulatory	Nov-13	Dec-13	Dec-13		Nov-13
16	All Day Medical Care Clinic	Ambulatory	Aug-13	Sep-13	Sep-13		Nov-13
17	All Walks of Life	Mental Health	Sep-13				
18	Allegany Health Nursing and Rehabilitation	Ambulatory	Mar-12				
19	Allegheny Surgical Associates	Ambulatory	Sep-11				
20	Alliance Inc.	Mental Health	Sep-13				
21	Altmed Medical Center	Ambulatory					Nov-13
22	Alternative Primary Care	Ambulatory	May-12				
23	Ambulatory Care Pharmacy - Medical Center	Pharmacy		Nov-13			Nov-13
24	Ambulatory Care Pharmacy - Shady Grove	Pharmacy					Oct-13
25	American Health Associates Laboratory	Laboratory	Sep-13				
26	American Radiology	Radiology	Sep-10				
27	American Spine	Ambulatory					Dec-13
28	Amerigroup	Payor	Nov-12			Feb-13	
29	Annapolis Center for Integrative Medicine	Ambulatory	Sep-13				
30	Annapolis Internal Medicine	Ambulatory	Jul-13	Dec-13	Dec-13		Dec-13
31	Annapolis Neurology Associates	Ambulatory	Nov-13	Nov-13	Dec-13		Nov-13
32	Annapolis Primary Care	Ambulatory	Sep-13	Aug-13			
33	Anne Arundel Medical Center	Hospital		Jul-12	Jul-12	Sep-13	Nov-13
34	Anne Arundel Cancer Registry	Ambulatory	Sep-11			Jun-13	
35	Anne Arundel HealthCare Enterprises, Inc.	Ambulatory		Jun-13	Jun-13		
36	Waugh Chapel Family Medicine	Ambulatory	Sep-11	Jul-13	Sep-13		
37	South River Family Medicine	Ambulatory		Jun-13	Jul-13		
38	Anne Arundel Physician Group	Ambulatory	Jul-13				
39	Anne Arundel Urology	Ambulatory	Apr-13	Mar-13	Apr-13		Nov-13
40	Anthony & Banerjee MD PA	Ambulatory	Feb-13	Feb-13			
41	Apple Discount Drugs	Ambulatory	Aug-12	Oct-12	Oct-12		Nov-13
42	Apple Discount Drugs #4	Pharmacy					Nov-13
43	Apple Infusion	Pharmacy					Jan-14
44	Arcola Health and Rehab Center	Long Term Care	Dec-12	Mar-12			
45	Arnold Professional Pharmacy	Pharmacy					Jan-14
46	Arthritis & Rheumatism Associates	Ambulatory	Feb-12	Mar-12	Mar-12		Nov-13
47	Arundel Mills Pharmacy	Pharmacy					Jan-14
48	Arundel Pharmacy	Pharmacy					Feb-14
49	Arundel Lodge	Mental Health	Aug-13	Nov-13	Nov-13	Nov-13	
50	Associates in Cardiology	Ambulatory	Aug-11	Dec-11	Sep-13		Nov-13
51	Atlantic General Hospital	Hospital	Aug-11	Mar-12	Mar-12		
52	Atlantic Orthopedic Specialists	Ambulatory					Mar-14
53	Austin Pharmacy & Medical Supplies	Pharmacy					Feb-14
54	Avalon Professional Pharmacy	Pharmacy					Feb-14
55	Baltimore Highlands Pharmacy	Pharmacy		Mar-14			Mar-14
56	Baltimore Medical System, Inc.	FQHC		Oct-13	Oct-13	Nov-13	Nov-13
57	Baltimore Medical Systems - Belair - Edison Family Health	Ambulatory	Oct-13	Mar-14	Mar-14		
58	Baltimore Medical Systems Inc. - Fleet Street	Ambulatory		Mar-14	Mar-14		Mar-14
59	Baltimore Nuerosurgery and Spine Center	Ambulatory	Oct-11				
60	Baltimore Washington Medical Center	Hospital	Aug-11	Mar-12	Mar-12		Nov-13
61	Bay Area Othopedics	Ambulatory		Mar-14			Mar-14
62	Bay Crossing Family Medicine	Ambulatory	Apr-13	May-13	May-13	Jun-13	Nov-13
63	Bay Hundred Medical Center	FQHC	Dec-13	Dec-13	Dec-13		
64	Bayside Family Practice	Ambulatory	Nov-13		Feb-14	Dec-13	

CRISP Portal, ENS & PDMP Adoption by Facility

Count	Organization	Type	Portal Participation Agreement*	Training*	Portal Live*	ENS Live*	PDMP Access
65	Bayside Internal Medicine	Ambulatory					Feb-14
66	Bayview Care Center (JHU)	Ambulatory	Aug-11	Apr-12	Apr-12		
67	Bethesda Medical Associates	Ambulatory	Jun-11	Dec-11	Jan-12		Nov-13
68	Bergand Group	Ambulatory					
69	Betty Toloria Braswell	Ambulatory					Jan-14
70	BH Health Services	Ambulatory	Apr-13	Dec-13	Jan-14		Nov-13
71	BioReference Laboratories	Laboratory	Mar-13				
72	Bon Secours Baltimore Health System	Hospital	Jan-12	Jan-13	Jan-13		Nov-13
73	Bowie Health Center	Ambulatory	Jul-13	Aug-13	Jul-13		Nov-13
74	Bowie Internal Medicine	Ambulatory	May-12	May-12	May-12		
75	Braddock Medical Group	Ambulatory					Feb-14
76	Braddock Oncology Associates	Ambulatory	Apr-13	Jan-13	Apr-13		
77	Bravo	Payor	Dec-12			Dec-12	
78	Bravo Health Advanced Care Center	Ambulatory	Feb-13				Nov-13
79	Broadmead Medical Services	Ambulatory	Apr-12				
80	Broadneck Pharmacy	Pharmacy					Oct-13
81	BROOKVILLE Pharmacy - BROOKSVILLE	Pharmacy		Mar-14			Mar-14
82	Bruce S. Rosenblum MD PC	Ambulatory					Feb-14
83	Brunswick Pharmacy	Pharmacy					Nov-13
84	Burt Littman, M.D.	Ambulatory					Feb-14
85	Calvert County Health Department	Government Agency					Jan-14
86	Calvert County Nursing Center	Long Term Care	Feb-12				
87	Calvert Internal Medicine Group	Ambulatory	Mar-12	Jul-12	Jul-12	Oct-12	Nov-13
88	Calvert Manor Healthcare Inc.	Long Term Care	Jun-12	Jul-12	Jul-12		
89	Calvert Memorial Hospital	Hospital	Aug-11	Feb-13	Feb-13		Nov-13
90	Cambridge Pediatrics	Ambulatory	Feb-12	Mar-12	Mar-12	Jun-13	
91	Cancer Care Center of Frederick	Ambulatory	Mar-11	Mar-11	Mar-11		
92	Cape Druge	Pharmacy					Jan-14
93	Capital Primary Care	Ambulatory	Apr-13	Jan-14	Jan-14		
94	Cardiovascular Specialists of Central MD	Ambulatory	Aug-11	Nov-11			
95	Carefirst	Payor	Jul-13			Nov-13	
96	Care Connection Inc.	Ambulatory	Jul-13	Aug-13			
97	Careplus CVS/Pharmacy #02549	Pharmacy		Mar-14			Mar-14
98	Caroline Nursing & Rehab Center	Long Term Care	Jan-12				
99	Caroll Health Group	Ambulatory	Aug-11	Jan-13	Jan-13		
100	Carroll Hospital Center	Hospital	Aug-11	Jul-12	Jul-12		Nov-13
101	Catholic Charities Child & Family Services	Mental Health	Sep-13				
102	Catholic Charities of Baltimore	Clinic		Mar-14			Mar-14
103	Catonsville Pharmacy	Pharmacy		Feb-14			Feb-14
104	Cecil County Health Department	Government Agency	Dec-12				
105	Center for Addiction Medicine	Ambulatory					Feb-14
106	Center for Sleep and Wake Disorders	Ambulatory	Jan-11				
107	Center for Pain and Rehab	Ambulatory					Jan-14
108	Center for Pelvic Pain in Annapolis	Ambulatory					Feb-14
109	Centreville Family Medicine	Ambulatory	Sep-11	Aug-13			
110	Centennial Medical Group	Ambulatory	May-13	Jun-13	Jun-13	Jun-13	Nov-13
111	Central Maryland Urology Associates	Ambulatory	Nov-12				
112	Channel Marker Inc.	Mental Health	Nov-13			Jan-14	
113	Chapel View Family Care	Ambulatory	Apr-13	Jul-13	Aug-13	Mar-14	
114	Charles A. Haile, M.D.	Ambulatory	Mar-14				
115	Charlotte Hall Veterans Home	Long Term Care	Nov-12	Nov-12	Nov-12		Nov-13
116	Charter Internal Medicine, LLC	Ambulatory	Mar-13	Mar-13	Mar-13		
117	Chase Brexton Health Services	Ambulatory		Jun-13	Jul-13	Jun-13	Nov-13
118	CBHS - Columbia	Ambulatory		Aug-13	Oct-13		Feb-14
119	CBHS - Easton	Ambulatory	Apr-13	Jul-13	Jul-13		
120	CBHS - Mt. Vernon Center	Ambulatory		Sep-13	Oct-13		
121	CBHS - Randallstown	Ambulatory		Jun-13	Jul-13		Nov-13
122	Chesapeake Oncology-Hematology Associates	Ambulatory		Mar-14			Mar-14
123	Chesapeake Otolaryngology Associates	Ambulatory	Jul-13	Aug-13	Sep-13		Nov-13
124	Chesapeake Potomac Regional Cancer Center	Ambulatory	Mar-12	Jul-12	Jul-12		
125	Chesapeake Primary Care Group	Ambulatory					Jan-14
126	Children's Medical Group	Ambulatory	May-12	Jul-12	Jul-12		
127	Choice Pharmacy	Pharmacy		Mar-14			Mar-14
128	Choptank Community Health Services, Inc.	FQHC	Dec-13	Nov-13	Dec-13		Dec-13

CRISP Portal, ENS & PDMP Adoption by Facility

Count	Organization	Type	Portal Participation Agreement*	Training*	Portal Live*	ENS Live*	PDMP Access
129	Chukwuma Ebo, MD	Ambulatory					Feb-14
130	Chul S. Kwon, M.D.	Ambulatory		Mar-14			Mar-14
131	Citizens Care & Rehabilitation Center	Long Term Care	May-13				
132	Citizens Pharmacy Services	Pharmacy					Feb-14
133	City Pharmacy of Elkton Inc	Pharmacy		Mar-14			Mar-14
134	Clear Spring Pharmacy	Pharmacy					Jan-14
135	Clinical Associates	Ambulatory	May-13	Jun-13	Jul-13	Jan-14	Nov-13
136	Collingswood Nursing and Rehabilitation Center	Long Term Care	Jul-13	Jan-14	Jan-14		
137	Columbia Medical Practice	Ambulatory	Feb-13	Sep-13	Sep-13	Apr-13	
138	Community Care Rx	Pharmacy		Mar-14			Mar-14
139	Community Clinics Inc.	Ambulatory	Apr-13	Jul-12	Mar-14	Dec-13	Nov-13
140	Community Family Medicine	Ambulatory	Apr-11				
141	Community of Hope, Inc.	FQHC	Oct-13			Dec-13	
142	Community Pharmacy	Pharmacy					Feb-14
143	Community Pharmacy - Baltimore	Pharmacy					Feb-14
144	Community Radiology Associates	Ambulatory	Sep-10	Dec-11	Dec-11		
145	Comprehensive Pain Center	Ambulatory		Mar-14			Mar-14
146	Comprehensive Primary Care	Ambulatory	Aug-12	Jun-12	Nov-12	Nov-13	Nov-13
147	Comprehensive Women's Health	Ambulatory	Aug-12	Jul-12	Jul-12		
148	Contact Lens Associates	Ambulatory	Jun-13	Jun-13	Sep-13		
149	Costco Pharmacy	Pharmacy		Mar-14			Mar-14
150	Costco Pharmacy #1000	Pharmacy					Feb-14
151	Costco Pharmacy #1078	Pharmacy					Feb-14
152	Costco Pharmacy #1124	Pharmacy					Feb-14
153	Costco Pharmacy #203	Pharmacy					Jan-14
154	Costco Pharmacy #208	Pharmacy					Jan-14
155	Costco Pharmacy #227	Pharmacy					Feb-14
156	Costco Pharmacy #330	Pharmacy					Feb-14
157	Costco Pharmacy #352	Pharmacy					Feb-14
158	Costco Wholesale #213	Pharmacy					Feb-14
159	Costco Wholesale #214	Pharmacy					Feb-14
160	Crain Towers Pharmacy	Pharmacy					Jan-14
161	Cranberry Medical Clinic	Clinic		Mar-14			Mar-14
162	Crisfield Clinic	Ambulatory					Jan-14
163	Crofton Internal Medicine	Ambulatory					Jan-14
164	Crossroads Community Inc.	Mental Health	Feb-14				
165	Crossroads Medical Associates	Ambulatory	Jan-14		Feb-14		Feb-14
166	CVS Pharmacy #244	Pharmacy		Mar-14			Mar-14
167	CVS Pharmacy #352	Pharmacy		Mar-14			Mar-14
168	CVS Pharmacy #1177	Pharmacy		Mar-14			Mar-14
169	CVS Pharmacy #1447	Pharmacy		Mar-14			Mar-14
170	CVS Pharmacy #1451	Pharmacy		Mar-14			Mar-14
171	CVS Pharmacy #1458	Pharmacy		Mar-14			Mar-14
172	CVS Pharmacy #1461	Pharmacy		Mar-14			Mar-14
173	CVS Pharmacy #1479	Pharmacy		Mar-14			Mar-14
174	CVS Pharmacy #1484	Pharmacy		Mar-14			Mar-14
175	CVS Pharmacy #1492	Pharmacy		Mar-14			Mar-14
176	CVS Pharmacy #1495	Pharmacy		Mar-14			Mar-14
177	CVS Pharmacy #1499	Pharmacy		Mar-14			Mar-14
178	CVS Pharmacy #1500	Pharmacy		Mar-14			Mar-14
179	CVS Pharmacy #1518	Pharmacy		Mar-14			Mar-14
180	CVS Pharmacy #1521	Pharmacy		Mar-14			Mar-14
181	CVS Pharmacy #1524	Pharmacy		Mar-14			Mar-14
182	CVS Pharmacy #1790	Pharmacy					Jan-14
183	CVS Pharmacy #1797	Pharmacy		Mar-14			Mar-14
184	CVS Pharmacy #1881	Pharmacy		Mar-14			Mar-14
185	CVS Pharmacy #1964	Pharmacy		Mar-14			Mar-14
186	CVS Pharmacy #2045	Pharmacy		Mar-14			Mar-14
187	CVS Pharmacy #2066	Pharmacy		Mar-14			Mar-14
188	CVS Pharmacy #2230	Pharmacy		Mar-14			Mar-14
189	CVS Pharmacy #2499	Pharmacy		Mar-14			Mar-14
190	CVS Pharmacy #2531	Pharmacy		Mar-14			Mar-14
191	CVS Pharmacy #2549	Pharmacy		Mar-14			Mar-14
192	CVS Pharmacy #2775	Pharmacy		Mar-14			Mar-14

CRISP Portal, ENS & PDMP Adoption by Facility

Count	Organization	Type	Portal Participation Agreement*	Training*	Portal Live*	ENS Live*	PDMP Access
193	CVS Pharmacy #2865	Pharmacy		Mar-14			Mar-14
194	CVS Pharmacy #2956	Pharmacy		Mar-14			Mar-14
195	CVS Pharmacy #4030	Pharmacy		Mar-14			Mar-14
196	CVS Pharmacy #4044	Pharmacy		Mar-14			Mar-14
197	CVS Pharmacy #4079	Pharmacy		Mar-14			Mar-14
198	CVS Pharmacy #4212	Pharmacy		Mar-14			Mar-14
199	CVS Pharmacy #4411	Pharmacy		Mar-14			Mar-14
200	CVS Pharmacy #5706	Pharmacy		Mar-14			Mar-14
201	CVS Pharmacy #6614	Pharmacy		Mar-14			Mar-14
202	CVS Pharmacy #6858	Pharmacy		Mar-14			Mar-14
203	CVS Pharmacy #7139	Pharmacy		Mar-14			Mar-14
204	CVS Pharmacy #7911	Pharmacy		Mar-14			Mar-14
205	CVS Pharmacy #8281	Pharmacy		Mar-14			Mar-14
206	Cyriac and Mundra MD PA	Ambulatory	Nov-13				
207	Daljeet Singh Sidhu, MD	Ambulatory					Jan-14
208	Darlington Pharmacy	Pharmacy					Jan-14
209	David B. Harding, M.D.	Ambulatory	Feb-14				
210	David R. McDuff, M.D.	Ambulatory					Feb-14
211	Dawn A. Broderick, M.D.	Ambulatory	Oct-13				
212	Decalo Medical Group	Ambulatory		Mar-14			Mar-14
213	Deepak Seth, MD	Ambulatory	Jun-13				
214	Deep Creek Pharmacy	Pharmacy					Sep-13
215	Delmarva Pain Associates	Ambulatory					Feb-14
216	Delmarva Pharmacy	Pharmacy					Jan-14
217	Demmy's Pharmacy LLC	Pharmacy		Mar-14			Mar-14
218	Denton Medical Center	FQHC	Dec-13	Dec-13	Dec-13		
219	Desai Medical Center	Ambulatory	Aug-13				
220	Desai & Holmes	Ambulatory	Feb-13	Feb-13	Feb-13		Nov-13
221	Devlin Manor	Long Term Care	Mar-11				
222	DHMH - Office of Health Services	Government Agency	Dec-12				
223	Digestive Disease Associates	Ambulatory	Dec-11	Dec-12			
224	Dobin & Heck Internal Medicine	Ambulatory	Apr-12	Jul-12	Jul-12		
225	Doctors Community Hospital	Hospital	Oct-11	Apr-13	Apr-13	Jun-13	Nov-13
226	Doctors Express Pikesville	Clinic	Mar-14				
227	Doctors Regional Cancer Center	Ambulatory	Jan-13	Sep-12	Sep-12		
228	Donald Bousel, MD	Ambulatory	Oct-12				
229	Douglas W. Heinrichs MD and Associates	Ambulatory					Jan-14
230	Downtown Baltimore Family Care	Ambulatory	Oct-13	Feb-13	Oct-13		Oct-13
231	Dr. David A Schwartz, MD	Ambulatory	Jan-13	Jan-13	Jan-13		Nov-13
232	Dr. Jhansi R. Ganesan, MD	Ambulatory	Apr-13	Jan-14	Jan-14		Nov-13
233	Dr. Peter Uggowitz, MD	Ambulatory	Oct-12				
234	Dr. Robin Bissell	Ambulatory	Sep-13	Oct-13	Oct-13		Oct-13
235	Dr. Vinu Ganti	Ambulatory	Jun-13	Sep-13	Oct-13		Oct-13
236	Dragos Popescu, MD	Ambulatory	Dec-12	Dec-12	Dec-12		Nov-13
237	Drs. Gehris, Jordan, Day and Associates, LLC	Ambulatory	Oct-12	Oct-12	Oct-12		
238	Drs. Schreiber and Kelsey	Ambulatory	May-13				
239	Drs. Shanahan and Ferguson	Ambulatory	May-13	Jun-13			
240	Drug City Pharmacy	Pharmacy					Jan-14
241	Dundalk Pediatrics Associates, P.A.	Ambulatory	Apr-13	Apr-13	Apr-13		Nov-13
242	E. Pasmanik MD, LLC	Ambulatory	Feb-14		Feb-14		Feb-14
243	Dynamic Mobile Imaging	Radiology	Jan-14				
244	Eastern Avenue Health Solutions	Mental Health	Nov-13	Dec-13			
245	Eastern Shore Pediatrics LLC	Ambulatory	May-13	Oct-13	Oct-13		Oct-13
246	Eastern Shore Primary Care	Ambulatory	Dec-13	Jan-14	Jan-14		Jan-14
247	Edge Medical Care PC	Ambulatory	Jun-13	Sep-13	Sep-13		Nov-13
248	Edward McCready Memorial Hospital	Hospital	Aug-11	Feb-14	Feb-14		Feb-14
249	Egle Nursing & Rehabilitation Center	Long Term Care	May-13	Jul-13	Jul-13	Jun-13	
250	Elkton Treatment Center	Ambulatory		Mar-14			Mar-14
251	Ellicott City Pediatric Associates	Ambulatory	Aug-13	Aug-13	Oct-13		
252	Emmitburg Osteopathic Primary Care	Ambulatory	Feb-11	Nov-11	Nov-11		
253	Endoscopic Microsurgery Associates	Ambulatory	Oct-13				
254	Erickson Living	Long Term Care	Sep-11	Mar-12			
255	Evergreen Health Care	Ambulatory	Nov-13	Dec-13	Dec-13	Mar-14	Dec-13
256	F. Caroline Define, MD	Ambulatory					Feb-14

CRISP Portal, ENS & PDMP Adoption by Facility

Count	Organization	Type	Portal Participation Agreement*	Training*	Portal Live*	ENS Live*	PDMP Access
257	Fairwood Spine and Pain Center	Ambulatory	Jun-13				
258	Falls Medical Specialists	Ambulatory	Sep-13	Sep-13	Oct-13		
259	Family & Medical Counseling Services	Mental Health	Nov-13				
260	Family Care Associates	Ambulatory					Jan-14
261	Family Care of Easton	Ambulatory	May-12	Jul-12	Jul-12		
262	Family Healthcare of Germantown	Ambulatory	Jul-11	Nov-11	Nov-11	Mar-13	Nov-13
263	Family Health Center	Ambulatory	Nov-11	Nov-11	Nov-11	Sep-13	Nov-13
264	Family Health Centers of Baltimore	FQHC	Oct-13				
265	Family Medical Center	Ambulatory					Feb-14
266	Family Meds Inc.	Ambulatory					Jan-14
267	Family Services	Ambulatory	Jun-12	Jun-12	Jun-12	Feb-14	
268	Farragut Internal Medicine	Ambulatory	Nov-11	Nov-11	Nov-11		
269	Fassett Magee Health Center	FQHC	Dec-13	Dec-13	Dec-13		
270	Fast Track Urgent Care	Ambulatory	Nov-12	Oct-13	Oct-13		Nov-13
271	Federalsburg Medical Center	FQHC	Dec-13	Dec-13	Dec-13		
272	Fink's Pharmacy	Pharmacy					Feb-14
273	Finksburgh Pharmacy	Pharmacy					Feb-14
274	Five Star Physician Services, LLC	Ambulatory	May-13	Aug-13	Sep-13		Nov-13
275	Foer Medical Arts Pharmacy-Rockledge Drive	Ambulatory					Jan-14
276	Forest Haven Nursing Home	Long Term Care	Sep-13	Oct-13	Oct-13		
277	Fort Washington Medical Center	Hospital	Sep-11	Aug-12	Sep-12		Nov-13
278	Foster Medical Care, LLC	Ambulatory					Jan-14
279	Frederick County Health Department	Government Agency					Jan-14
280	Frederick Gastroenterology Assocaites	Ambulatory	Jul-13	Jul-13	Aug-13		
281	Frederick Memorial Hospital	Hospital	Jun-11	Jul-12	Jul-12		Nov-13
282	Frederick Primary Care Associates	Ambulatory	Sep-13	Jan-14	Jan-14	Nov-13	Jan-14
283	Frederick Spine and Rehab	Ambulatory					Feb-14
284	Ft. Lincoln Family Medicine	Ambulatory	Nov-13	Feb-14	Feb-14	Feb-14	Feb-14
285	FutureCare Canton Harbor	Long Term Care	Feb-14				
286	FutureCare Charles Village	Long Term Care					
287	FutureCare Cherrywood	Long Term Care					
288	FutureCare Chesapeake	Long Term Care					
289	FutureCare Cold Spring	Long Term Care					
290	FutureCare Health and Management Corporation	Long Term Care					
291	FutureCare Homewood	Long Term Care					
292	FutureCare Irvington	Long Term Care					
293	FutureCare Lochearn	Long Term Care					
294	FutureCare North Point	Long Term Care					
295	FutureCare Old Court	Long Term Care					
296	FutureCare Pineview	Long Term Care					
297	FutureCare Sandtown	Long Term Care					
298	Garrett County Memorial Hospital	Hospital	Apr-11	Jan-14	Jan-14		Jan-14
299	Garrett Medical Group, P.A.	Ambulatory	Jun-12				
300	Garrett Surgical Group	Ambulatory	Aug-12				
301	Geetha Subramaniam	Ambulatory		Mar-14			Mar-14
302	Genesis Healthcare	Long Term Care	Oct-13	Dec-13	Dec-13		Dec-13
303	Genesis Cromwell Facility	Long Term Care					Feb-14
304	Genesis Franklin Woods	Long Term Care					
305	Genesis Heritage Center	Long Term Care					
306	Gerald Family Care	Ambulatory	Sep-11	Apr-13	Apr-13	Jan-13	
307	Giant Pharmacy #129	Pharmacy		Mar-14			Mar-14
308	Giant Pharmacy #131	Pharmacy		Mar-14			Mar-14
309	Giant Pharmacy #146	Pharmacy					Feb-14
310	Giant Pharmacy #303	Pharmacy					Feb-14
311	Giant Pharmacy #304	Pharmacy		Mar-14			Mar-14
312	Giant Pharmacy #322	Pharmacy		Mar-14			Mar-14
313	Giant Pharmacy #325	Pharmacy					Feb-14
314	Giant Pharmacy #358	Pharmacy		Mar-14			Mar-14
315	Giant Pharmacy #798	Pharmacy					Feb-14
316	Giant Pharmacy #1841	Pharmacy					Jan-14
317	Glade Valley Family Practice	Ambulatory					Jan-14
318	Glenwood Life Counseling Center	Ambulatory					Jan-14
319	Glick Psychiatry	Mental Health					Feb-14
320	Go-Getters	Mental Health	Aug-13	Aug-13	Sep-13	Nov-13	

CRISP Portal, ENS & PDMP Adoption by Facility

Count	Organization	Type	Portal Participation Agreement*	Training*	Portal Live*	ENS Live*	PDMP Access
321	Goldsboro Medical Center	FQHC	Dec-13	Dec-13	Dec-13		
322	Greater Baltimore Medical Center	Hospital	Jan-10	Jun-12	Jun-12		Nov-13
323	Greater Baltimore Medical Associates	Ambulatory	Jun-12	Nov-12	Nov-12	Aug-12	Nov-13
324	Green Ridge Behavioral Health	Ambulatory					Jan-14
325	Green Spring Internal Medicine	Ambulatory	Feb-12	Feb-12	Feb-12	Apr-13	
326	Gregory Pokrywka MD	Ambulatory					Feb-14
327	GS Surgical Services, LLC	Ambulatory	Jul-12	Mar-13	Apr-13		Nov-13
328	Gul G. Chablani, M.D.	Ambulatory	Jan-14				
329	Happy Harry's #11037	Pharmacy		Mar-14			Mar-14
330	Happy Harry's #11043	Pharmacy		Mar-14			Mar-14
331	Happy Harry's #11054	Pharmacy		Mar-14			Mar-14
332	Harford-Belair Community Mental Health	Mental Health	Sep-13				
333	Harford Memorial Hospital	Hospital	Nov-11	Aug-12	Aug-12		Nov-13
334	Harford Pharmacy	Pharmacy					Feb-14
335	Harriet Lane Clinic	Ambulatory					Jan-14
336	Health Care for the Homeless MD	Ambulatory	May-13	May-13	Oct-13	Mar-14	Feb-13
337	Healthy Steps	Ambulatory	Aug-11	Jan-12	Jan-12		
338	Hebrew Home of Greater Washington	Long Term Care	Feb-12	Apr-12	May-12		
339	Hereford Pharmacy INC	Pharmacy		Mar-14			Mar-14
340	Hillendale Pharmacy	Pharmacy					Jan-14
341	Hollywood Medical Center	Ambulatory	Feb-14				
342	Hollywood Pharmacy	Pharmacy		Mar-14			Mar-14
343	Holy Cross - Aspen Hill Health Center	Ambulatory	Sep-10	Jul-12	Aug-12		Nov-13
344	Holy Cross - Silver Spring Health Center	Ambulatory	Nov-11	Nov-12	Nov-12		
345	Holy Cross Employee Health	Ambulatory	Oct-11	Jan-09	Jan-09		
346	Holy Cross Health Center	Ambulatory	Sep-10	Nov-11	Nov-11		
347	Holy Cross Hospital	Hospital	Sep-10	Dec-11	Dec-11		Nov-13
348	Hope Health Systems	Ambulatory	Nov-12	Oct-13	Oct-13		
349	Howard County General Hospital	Hospital	Aug-11	Mar-12	Mar-12		Nov-13
350	Howard County Health Department	Government Agency		Mar-14			Mar-14
351	Humanim	Ambulatory	Jul-13	Sep-13	Sep-13	Aug-13	
352	Indian Head Pharmacy	Pharmacy		Mar-14			Mar-14
353	Ingleside at King's Farm	Long Term Care	May-13	Jun-13	Jun-13	Jun-13	Nov-13
354	Institutes for Behavior Resources	Mental Health	Sep-13	Sep-13	Sep-13		Nov-13
355	Irina A. Skopets, MD, PA	Ambulatory	Sep-13	Sep-13	Oct-13		Nov-13
356	Jack D. Blaine, MD	Ambulatory					Jan-14
357	Janjua Neurology	Ambulatory	Feb-13	Jan-13	Feb-13		
358	Jarrettsville Family Care	Ambulatory	Sep-12	Sep-12	Sep-12		
359	Jarrettsville Pharmacy	Pharmacy					Feb-14
360	JHCP Annapolis***	Ambulatory	Apr-12	Aug-12	Aug-12		
	JHCP Bowie	Ambulatory		Aug-12	Aug-12		
	JHCP Canton Crossing	Ambulatory		Jun-12	Jun-12	Sep-12	
	JHCP Charles County	Ambulatory		Aug-12	Sep-12		
	JHCP Cranberry Station	Ambulatory					
	JHCP Downtown Bethesda	Ambulatory		Jul-12	Jul-12		
	JHCP East Baltimore	Ambulatory		Aug-12	Aug-12		Nov-13
	JHCP Frederick	Ambulatory		Aug-12	Aug-12		
	JHCP Fulton	Ambulatory		Jun-13	Jul-13		
	JHCP Germantown	Ambulatory		Jul-13	Jul-13		
	JHCP Glen Burnie	Ambulatory		Aug-12	Sep-12		Nov-13
	JHCP Greater Dundalk	Ambulatory		Jul-12	Aug-12		Nov-13
	JHCP Green Spring	Ambulatory		Aug-12	Aug-12		
	JHCP Hager Park Health Center	Ambulatory					
	JHCP Hagerstown	Ambulatory		May-12	May-12	Sep-12	
	JHCP Heart Care	Ambulatory		Oct-13	Oct-13		Nov-13
	JHCP Howard County	Ambulatory		Aug-12	Aug-12		
	JHCP Kent Island	Ambulatory		Sep-12	Sep-12		
	JHCP Laurel	Ambulatory		Aug-12	Aug-12		
	JHCP Laurel Health Center	Ambulatory					
JHCP Monocacy Valley Health Center	Ambulatory						
JHCP Montgomery Grove	Ambulatory	May-12	May-12	Sep-12	Nov-13		
JHCP North Bethesda	Ambulatory	Jul-12	Jul-12				
JHCP OBGYN at Columbia	Ambulatory						
JHCP Odenton	Ambulatory	Aug-12	Aug-12				

CRISP Portal, ENS & PDMP Adoption by Facility

Count	Organization	Type	Portal Participation Agreement*	Training*	Portal Live*	ENS Live*	PDMP Access
	JHCP Riverside	Ambulatory					
	JHCP Rockville	Ambulatory		Jul-12	Jul-12		Nov-13
	JHCP Sibley Medical	Ambulatory					
	JHCP Water's Edge	Ambulatory		Jun-12	Jun-12	Sep-12	Nov-13
	JHCP Westminster	Ambulatory		Aug-12	Sep-12		Nov-13
	JHCP White Marsh	Ambulatory		Aug-12	Aug-12		Nov-13
	JHCP Wyman Park	Ambulatory		Jul-12	Jul-12	Sep-12	Nov-13
361	John M. Lee MD PA	Ambulatory	Oct-13	Oct-13	Nov-13		Nov-13
362	John Whittaker, LLC	Ambulatory		Mar-14			Mar-14
363	Johns Hopkins Bayview Medical Center	Hospital	Aug-11	Apr-12	Apr-12	Mar-14	Nov-13
364	Johns Hopkins Community Physicians	Ambulatory	Apr-12	Apr-12	Apr-12	Sep-12	Feb-14
365	Johns Hopkins Healthcare Priority Partners	Payor	Nov-12			Jan-13	
366	Johns Hopkins Home Care	Long Term Care					Jan-14
367	Johns Hopkins Hospital	Hospital	Aug-11	Jul-12	Jul-12		Nov-13
368	JCHIP Commnity	Payor		Oct-13	Oct-13	Jul-13	
369	JCHIP KnownCAD	Payor				Jun-13	
370	Johns Hopkins Outpatient Pharmacy at the Arcade	Pharmacy					Jan-14
371	Johnson Family Pharmacy	Pharmacy		Mar-14			Mar-14
372	Johnston Family Medicine	Ambulatory	May-13				Nov-13
373	Julius Boateng, M.D.	Ambulatory	Feb-14				
374	Kaiser Permanente	Ambulatory	Mar-14	Jan-14			Jan-14
375	Kaiser Permanente Kensington Pharmacy	Pharmacy					Jan-14
376	Kaiser Permanente Pharmacy	Pharmacy					Feb-14
377	Kaiser Permanente So Baltimore Co Pharmacy	Pharmacy					Feb-14
378	Kaiser Permanente Severna Park Pharmacy	Pharmacy					Feb-14
379	Kaiser Permanente Whitemarsh	Clinic		Mar-14			Mar-14
380	Karl Spector, MD & Associates	Ambulatory					Feb-14
381	Kingdom Medicine P.A.	Ambulatory	Mar-13	Mar-13	Mar-13		Nov-13
382	Klein's Shoprite Pharmacy #545	Pharmacy					Sep-13
383	Klein's Shoprite Pharmacy #547	Pharmacy		Mar-14			Mar-14
384	Klein's Shoprite Pharmacy #548	Pharmacy		Mar-14			Mar-14
385	Klein's Shoprite Pharmacy #551	Pharmacy		Mar-14			Mar-14
386	KMart Pharmacy	Pharmacy					Feb-14
387	KMart Pharmacy #3146	Pharmacy					Feb-14
388	KMart Pharmacy #3172	Pharmacy		Mar-14			Mar-14
389	KMart Pharmacy #3277	Pharmacy		Mar-14			Mar-14
390	KMart Pharmacy #3796	Pharmacy		Mar-14			Mar-14
391	KMart Pharmacy #7673	Pharmacy		Mar-14			Mar-14
392	KMart Pharmacy #9524	Pharmacy					Jan-14
393	Kure Pain Management	Ambulatory					Jan-14
394	La Clinica del Pueblo	FQHC	Dec-13				
395	Labcorp	Laboratory	Sep-10				
396	Laurel Medical Associates	Ambulatory	Jul-13				
397	Laurel Regional Hospital	Hospital	Jul-11	Jul-13	Sep-13		Nov-13
398	Lavale Pharmacy	Pharmacy					Feb-14
399	Leisure World Medical Center	Long Term Care	Jul-11	Nov-11	Dec-11		
400	Lifebridge Courtland Gardens	Long Term Care	Oct-10				
401	Lifebridge Levindale	Long Term Care	Oct-10				
402	Lifebridge Health - Sinai Ambulatory Practice	Ambulatory				Jun-13	
403	Lifebride Pharmacy at Northwest Hospital	Pharmacy					Jan-14
404	Lifebridge Pharmacy at Sinai	Pharmacy					Jan-14
405	Lifestream Health	Ambulatory					Feb-14
406	Lisa R. Halpern MD	Ambulatory		Mar-14			Mar-14
407	Lois A. Narr, D.O.	Ambulatory	Sep-13	Sep-13			
408	Long View Nursing Home	Long Term Care	Mar-12	Apr-12			
409	Lorien Bel Air	Long Term Care	Jan-12	May-12	May-12		
410	Lorien Columbia	Long Term Care	Jan-12				
411	Lorien Encore at Turf Valley	Long Term Care	Jan-12				
412	Lorien Mays Chapel	Long Term Care	Jan-12				
413	Lorien Mt. Airy	Long Term Care	Jan-12				
414	Lorien Riverside	Long Term Care	Jan-12				
415	Lorien Taneytown	Long Term Care	Jan-12				
416	Lynch Primary Care	Ambulatory	Feb-14				
417	Man Alive Inc. Lane Treatment Center	Mental Health	Sep-13	Dec-13	Dec-13		Dec-13

CRISP Portal, ENS & PDMP Adoption by Facility

Count	Organization	Type	Portal Participation Agreement*	Training*	Portal Live*	ENS Live*	PDMP Access
418	Manchester Medical Group, LLC	Ambulatory	Mar-13	Mar-13	Mar-13		Nov-13
419	Manoj Mathur, M.D.	Ambulatory	Dec-11				
420	Maple Shade Youth & Family Services	Mental Health	Oct-13				
421	Marie A. Dobyns, MD, PA	Ambulatory	Jul-13	Jul-13	Sep-13	Aug-13	Nov-13
422	Martins Food Markets	Ambulatory					Feb-14
423	Martin's Food Market #6003	Pharmacy		Mar-14			Mar-14
424	Martin's Pharmacy	Pharmacy					Feb-14
425	Martin's Pharmacy #6275	Pharmacy		Mar-14			Mar-14
426	Mary's Center	FQHC	Dec-13				
427	Maryland Department of Health and Mental Hygiene	Government Agency	Dec-12				
428	Maryland Department of Public Safety and Correctional Services	Government Agency	Dec-12				
429	Maryland Kidney Group	Ambulatory	Sep-12	Jul-13	Jul-13		Nov-13
430	Maryland Oncology and Hematology	Ambulatory	Jan-13	Jan-13	Jan-13		Jan-14
431	Maryland Open MRI	Radiology	Nov-12				
432	Maryland Pain & Spine Center, LLC	Ambulatory					Jan-14
433	Maryland Pain Specialists	Ambulatory					Jan-14
434	Maryland Primary Care Physicians	Ambulatory	Apr-13	Apr-13	Apr-13		Nov-13
435	MPCP Columbia	Ambulatory		Feb-13	Sep-13	Nov-13	Nov-13
436	Maryland Rehab and Pain	Ambulatory					Feb-14
437	Maryland Spine and Sports Medicine, P.C.	Ambulatory					Feb-14
438	McKay's Pharmacy	Pharmacy					Feb-14
439	MD Laser Medicine & Surgery	Ambulatory	Aug-13				
440	Med One Pharmacy - Middletown	Pharmacy		Mar-14			Mar-14
441	Medpeds	Ambulatory	May-12	Jul-12	Jul-12	Dec-12	
442	MedStar Family Choice	FQHC	Aug-13			Dec-13	
443	MedStar Franklin Square Medical Center	Hospital	Jun-11	Jul-12	Jul-12	Jan-14	Nov-13
444	MedStar Good Samaritan Hospital	Hospital	Jun-11	Jun-12	Jun-12		Nov-13
445	MedStar Harbor Hospital	Hospital	Jun-11	Mar-12	Mar-12	Aug-12	Nov-13
446	MedStar Montgomery Medical Center	Hospital	Jun-11	Dec-11	Feb-12		Nov-13
447	Medstar National Rehabilitation Network	Hospital	Jun-11	Mar-13	Mar-13		Nov-13
448	MedStar Southern Maryland Hospital Center	Hospital	Dec-10	Feb-13	Feb-13		
449	MedStar St. Mary's Hospital	Hospital	Jun-11	May-13	Jun-13		
450	MedStar Union Memorial Hospital	Hospital	Jun-11	May-12	May-12		Nov-13
451	MedStar Pharmacy Store #3	Pharmacy					Jan-14
452	MedStar Pharmacy Store #4	Pharmacy					Jan-14
453	MedStar Pharmacy Store #6	Pharmacy					Jan-14
454	MedStar Pharmacy Store #7	Pharmacy					Jan-14
455	Menocal Medical Services PA	Ambulatory					Feb-14
456	Mercy Medical Center	Hospital	Sep-11	Aug-12	Aug-12		Nov-13
457	Meridian Primary Care	Ambulatory	Mar-14	Mar-14	Mar-14		Mar-14
458	Meritus Medical Center	Hospital	Nov-11	Sep-12	Sep-12		Nov-13
459	Metro Infectious Disease Control	Ambulatory	Aug-12				
460	Metropolitan Medical Specialists	Ambulatory	Mar-14				
461	Mian Family Medicine	Ambulatory	Mar-11	Dec-11	Dec-11		Nov-13
462	Michael April & Associates	Ambulatory					Jan-14
463	Michael Crouch, M.D. , P.A.	Ambulatory		Mar-14			Mar-14
464	Michael Randolph, MD, PC	Ambulatory	Oct-12	Oct-13	Oct-13		Oct-13
465	Mid-Atlantic - Delaware	Ambulatory	Mar-12				
466	Mid-Atlantic Allegheny Health Nursing & Rehab Center	Long Term Care	Mar-12				
467	Mid-Atlantic Berlin Nursing & Rehab Center	Long Term Care	May-13	Aug-13	Sep-13	Sep-13	
468	Mid-Atlantic Chapel Hill Nursing & Rehab Center	Long Term Care	Mar-12				
469	Mid-Atlantic Fairfield Nursing & Rehab Center	Long Term Care	Mar-12				
470	Mid-Atlantic Nephrology Associates	Ambulatory	Sep-13	Sep-13	Oct-13		Nov-13
471	Mid-Atlantic Oakland Nursing & Rehab Center	Long Term Care	Mar-12				
472	Mid-Atlantic Pain Institute	Ambulatory					Jan-14
473	Mid-Atlantic Pain Medicine Center	Ambulatory	Aug-13	Sep-13	Sep-13		Nov-13
474	Mid-Atlantic States Region Kaiser Permanente	Payor	Mar-14				
475	Mid-Atlantic Villa Rosa Nursing Home	Long Term Care	Mar-12				
476	Middletown Valley Family Medicine, P.A.	Ambulatory	Oct-13	Oct-13	Oct-13		Nov-13
477	Mikhail Gendel Family Practice	Ambulatory					Jan-14
478	Mitchell Gittelman, DO,PA	Ambulatory	Dec-13	Jan-14	Jan-14		Jan-14
479	Mody & Miller MD PA	Ambulatory	Jan-13				
480	Monique Blundon, MD	Ambulatory					Jan-14
481	Monocacy Emergency Physicians	Ambulatory		Mar-14			Mar-14

CRISP Portal, ENS & PDMP Adoption by Facility

Count	Organization	Type	Portal Participation Agreement*	Training*	Portal Live*	ENS Live*	PDMP Access
482	Montgomery County Medication Assisted Treatment Program	Ambulatory		Mar-14			Mar-14
483	Montgomery Medical Associates, P.C.	Ambulatory	May-13	Jun-13	Nov-13	Nov-13	Nov-13
484	Montgomery Oncology Care and Hematology	Ambulatory					Jan-14
485	Montgomery Recovery Services	Ambulatory	Sep-13	Oct-13	Oct-13	Nov-13	
486	Montgomery Villiage Pain and Rehabilitation Center	Ambulatory					Jan-14
487	Mosiac Community Services	Ambulatory	Jan-13	Jan-13	Jan-13	Dec-13	Jan-14
488	Mountain Laurel Medical Center	Ambulatory	Apr-12	Jun-12	Jun-12		
489	Mt. Washington Pediatric	Hospital	Jun-11				
490	Mt. Vernon Pharmacy	Pharmacy					Feb-14
491	N.B. Vellanki, MD	Ambulatory	Apr-13		Jan-14		
492	National Spine and Pain Centers	Ambulatory					Jan-14
493	Natural Family Wellness	Ambulatory	May-12	Apr-12	Apr-12	Dec-13	
494	Naturecare Pharmacy	Pharmacy		Mar-14			Mar-14
495	Neighborcare Howard Co General Hospital	Pharmacy					Dec-13
496	Neighborcare Pharmacy	Pharmacy					Dec-13
497	Neighborcare Pharmacy - Riderwood	Pharmacy					Jan-14
498	Neil Lattin M.D. LLC	Ambulatory	Aug-12	Aug-12	Aug-12		Nov-13
499	Nephrology Associates PA	Ambulatory	Mar-13				Nov-13
500	Nephrology Center of Maryland	Ambulatory	Jan-12				
501	Northgate Pharmacy Inc	Pharmacy		Mar-14			Mar-14
502	Northwest Hospital Center	Hospital	Oct-10	Sep-12	Sep-12		Nov-13
503	Nova Interventional Pain Management	Ambulatory					Feb-14
504	NMS Healthcare Facilities	Long Term Care	May-13	May-13	May-13	Jul-13	Nov-13
505	NMS Healthcare Annapolis	Long Term Care		May-13	Jan-14		
506	NMS Healthcare Hagerstown	Long Term Care		May-13	May-13		
507	NMS Healthcare Hyattsville	Long Term Care		May-13	May-13		
508	Oasis Foundation	Ambulatory					Jan-14
509	Olney Professional Pharmacy Inc	Pharmacy					Jan-14
510	Omni Medical Center	Ambulatory	Nov-12	Oct-12			
511	Omnicare of Salisbury	Ambulatory					Nov-13
512	Optimum Health Systems Inc.	Mental Health	Dec-13	Dec-13	Dec-13		Dec-13
513	Orchard Pharmacy	Pharmacy		Mar-14			Mar-14
514	OrthoBethesda	Ambulatory	Feb-13				
515	OrthoMaryland	Surgical Center		Mar-14			Mar-14
516	Owensville Primary Care, Inc	Ambulatory	Sep-13	Aug-13	Sep-13		Nov-13
517	Padek Healthcare Pharmacy LLC	Pharmacy		Mar-14			Mar-14
518	Pain Management Institute	Ambulatory		Mar-14			Mar-14
519	Pain Management Specialists	Ambulatory					Jan-14
520	Pain Medicine and Rehab Services	Ambulatory					Feb-14
521	Pain, Spine & Rehab Associates	Ambulatory		Mar-14			Mar-14
522	Panhandle Medicine	Ambulatory					Jan-14
523	Park Medical Associates	Ambulatory	Dec-13	Dec-13	Jan-14		Jan-14
524	Park Pharmacy	Pharmacy					Feb-14
525	Parkway Neuroscience	Ambulatory					Jan-14
526	Patricia M. Sullivan, MD	Ambulatory	Jan-14				Feb-14
527	Paul T. Barbera MD, PA	Ambulatory	Jan-14	Jan-14			Jan-14
528	Paul Katz, DO	Ambulatory					Feb-14
529	Pediatric & Adolescent Care of Silver Spring	Ambulatory	Dec-13		Feb-14		Feb-14
530	Peninsula Health Group	Ambulatory		Aug-13			
531	Peninsula Orthopaedic Associates	Ambulatory		Mar-14			Mar-14
532	Peninsula Regional Medical Center	Hospital	Nov-11	May-13	Sep-13		Nov-13
533	People's Community Health Centers	Ambulatory	Jan-13	Feb-13	Feb-13	Aug-13	
534	People Encouraging People, Inc.	Ambulatory	Apr-13	Jul-13	Jul-13	Jul-13	Nov-13
535	Perkis and Ferez Family Medicine	Ambulatory	Mar-14				
536	Phillip Konits MD LLC	Ambulatory	Jan-14	Apr-13	Jan-14		Jan-14
537	Phoenix Health Center	Ambulatory					Jan-14
538	Physical Medicine & Pain Management Associates, PC	Ambulatory					Jan-14
539	Physicians House Calls	Long Term Care	Sep-13	Sep-13	Sep-13	Dec-13	Nov-13
540	Piccard Surgery Center, LLC	Ambulatory	Nov-13	May-13	May-13		
541	Pill Box Pharmacy	Pharmacy					Feb-14
542	Pittsville Pharmacy - E. Old Ocean City	Pharmacy					Jan-14
543	Poolsville Family Practice	Ambulatory	Mar-12	Jul-12	Jul-12		Nov-13
544	Potomac Obstetrics and Gynecology	Ambulatory	Mar-13	Mar-13	Mar-13		
545	Potomac Physician Associates	Ambulatory	Jun-11	Dec-11	Dec-11	Oct-12	Nov-13

CRISP Portal, ENS & PDMP Adoption by Facility

Count	Organization	Type	Portal Participation Agreement*	Training*	Portal Live*	ENS Live*	PDMP Access
546	Potomac Physicians PA	Ambulatory	Oct-12	Oct-12	Oct-12	Mar-13	Nov-13
547	Potomac Prompt Medical Care	Ambulatory					Jan-14
548	Potomac Valley Nursing & Wellness Ctr	Long Term Care	Jun-12	Jun-12	Jun-12		
549	PR Family Medicine	Ambulatory					Jan-14
550	Prafull Patel, MD, LLC	Ambulatory	Oct-13	Nov-13	Nov-13		Nov-13
551	Pregnancy Aid Center	Ambulatory	Apr-13	Apr-13	Jun-13		
552	Primary and Alternative Med	Ambulatory	Oct-11				
553	Primary Care Coalition of Montgomery County	Ambulatory	Nov-11	Jun-12	Jun-12		
554	Prince George's County Health Department	Government Agency	May-13				
555	Prince George's Hospital Center	Hospital	Jul-11	Apr-13	Apr-13		Nov-13
556	Priority Care Clinics	Ambulatory					Feb-14
557	Professional Pharmacy of Essex	Pharmacy					Nov-13
558	Progressive Radiology	Radiology	Dec-11	May-12	May-12		
559	Prologue Inc.	Mental Health	Aug-13	Aug-13	Sep-13		
560	Proto MED	Ambulatory	Sep-12				
561	Proyecto Salud Clinic	Ambulatory	May-13	Jun-13	Nov-13		Nov-13
562	Psychiatric Care Center of Frederick	Ambulatory					Jan-14
563	Psychotherapeutic Services	Mental Health	Aug-13	Aug-13		Nov-13	
564	Quarterfiled Pharmacy	Pharmacy					Feb-14
565	Quest Diagnostics	Laboratory	Sep-10				
566	Radiation Physics	Radiology	Nov-12	Aug-13			
567	RadNet	Radiology	Sep-10	Nov-11	Mar-12		
568	Randal Steele, DO	Pharmacy					Feb-14
569	Ravinder K. Rustagi, MD	Ambulatory					Jan-14
570	Reach Health Services	Ambulatory	Sep-13	Sep-13	Sep-13		Nov-13
571	Redner's Pharmacy #35	Pharmacy					Jan-14
572	Redner's Pharmacy - Bel Air	Pharmacy					Feb-14
573	Reesers Pharmacy Inc	Pharmacy		Mar-14			Mar-14
574	Regional Hematology and Oncology	Ambulatory	Feb-14				
575	Rheumatology Associates of Baltimore	Ambulatory	Jun-13	Oct-13	Oct-13	Aug-13	
576	Righttime	Ambulatory	Mar-11	Nov-11			
577	Rite Aid #0324	Pharmacy					Oct-13
578	Rite Aid #1086	Pharmacy					Jan-14
579	Rite Aid #11204	Pharmacy					Jan-14
580	Rite Aid #2214	Pharmacy					Oct-13
581	Rite Aid #3871	Pharmacy					Jan-14
582	Ritu Bhambhani, LLC	Pharmacy					Jan-14
583	Riverside MCO	Payor	May-13			Jun-13	
584	Robustiano J. Barrera Jr. MD, PA	Ambulatory	Aug-12	Aug-12	Aug-12		
585	Rockville Geriatrics and Palliative Medicine	Ambulatory	Mar-12	Jan-09	Jan-09		Nov-13
586	Rockville Internal Medicine Group	Ambulatory	Jul-11	Dec-11	Jul-12		Nov-13
587	Roman Ostrovsky, MD	Ambulatory					Jan-14
588	Rosen-Hoffberg Rehabilitation and Pain Management	Ambulatory					Jan-14
589	Safeway Pharmacy #1075	Pharmacy					Feb-14
590	Safeway Pharmacy #1089	Pharmacy					Feb-14
591	Safeway Pharmacy #1657	Pharmacy					Feb-14
592	Safeway Pharmacy #1715	Pharmacy		Mar-14			Mar-14
593	Safeway Pharmacy #1731	Pharmacy		Mar-14			Mar-14
594	Safeway Pharmacy #2608	Pharmacy					Feb-14
595	Safeway Pharmacy #2629	Pharmacy					Feb-14
596	Safeway Pharmacy #2797	Pharmacy					Feb-14
597	Sante Group	Mental Health	Nov-13				
598	Scaria Mathew, MD	Ambulatory	Feb-13	Feb-13	Feb-13		Nov-13
599	Scott Mauer, MD	Ambulatory	Jul-11				
600	Season's Hospice	Long Term Care	Jun-12	Jul-12	Jul-12		
601	Seidenberg Protzko Eye Associates	Ambulatory	Oct-12	Oct-12	Oct-12		
602	Sellers Family Medicine	Ambulatory	Jul-11				
603	Seton Pain and Rehabilitation Center	Ambulatory					Feb-14
604	Shady Grove Adventist Hospital	Hospital	Nov-10	Dec-11	Dec-11	Sep-13	Nov-13
605	Shady Grove Adventist Radiation Oncology Center	Ambulatory	Mar-12				Nov-13
606	Shady Grove Orthopedic Associates	Ambulatory					Jan-14
607	Shady Grove Radiology	Radiology	Feb-12	Dec-12	Dec-12		
608	Shah Associates	Ambulatory	Dec-13				
609	Sharpsburg Pharmacy	Pharmacy		Feb-14			Feb-14

CRISP Portal, ENS & PDMP Adoption by Facility

Count	Organization	Type	Portal Participation Agreement*	Training*	Portal Live*	ENS Live*	PDMP Access
610	Sharon M. Messics, MD	Ambulatory	Feb-13			May-13	
611	Shayona Pharmacy	Pharmacy		Mar-14			Mar-14
612	Shepherd's Clinic	Ambulatory	Jul-11	Nov-11	Nov-11		
613	Sheppard Pratt Physician's P.A.	Mental Health	Dec-13				
614	Shoppers Pharmacy #2287/941	Pharmacy		Mar-14			Mar-14
615	Shoppers Pharmacy #2290/951	Pharmacy		Mar-14			Mar-14
616	Shoprite Pharmacy #536	Pharmacy					Feb-14
617	Sinai Hospital	Hospital	Oct-10	Aug-12	Sep-12		Nov-13
618	Smaldore Family Practice	Ambulatory	Apr-13	Aug-13	Jan-14		Nov-13
619	Smart Pain Management	Ambulatory	Feb-14				
620	Snow Hill Family Medicine	Ambulatory					Feb-14
621	Snow Hill Pharmacy Inc	Pharmacy		Mar-14			Mar-14
622	Sood Family Medicine	Ambulatory	Mar-12	Sep-13	Sep-13		Nov-13
623	South Baltimore County Medical Center	Clinic		Mar-14			Mar-14
624	South Baltimore Pain Center	Ambulatory					Jan-14
625	South Baltimore Pharmacy	Pharmacy		Mar-14			Mar-14
626	South Cumberland Pharmacy	Pharmacy		Mar-14			Mar-14
627	South River Internal Medicine	Ambulatory					Jan-14
628	Southern Maryland Women's Healthcare	Ambulatory	Feb-14				
629	Spine, Sports Medicine and Pain Management, LLC	Ambulatory		Mar-14			Mar-14
630	Spine Team Maryland	Ambulatory					Feb-14
631	Sports and Spine Pain Management	Ambulatory					Feb-14
632	Springfield Hospital Center	Mental Health			Feb-14		Feb-14
633	Sridhar Chatrathi, MD PC	Ambulatory	Mar-14				
634	St. Agnes Hospital	Hospital		Dec-12	Dec-12		Nov-13
635	Seton Medical Group	Ambulatory		May-13	May-13	Jun-13	Nov-13
636	St. Luke's House and Threshold Services United	Long Term Care	Jul-12	Sep-12	Sep-12		
637	St. John's Pharmacy	Pharmacy					Jan-14
638	Stem-Ross Weight Loss Center	Ambulatory					Jan-14
639	Steve's Pharmacy	Pharmacy					Jan-14
640	Steven Lacher MD PA	Ambulatory	Aug-13	Aug-13	Sep-13		Nov-13
641	Stone Run Family Medicine	Ambulatory	Jun-12	Jun-12	Jun-12	Oct-12	Nov-13
642	Suburban Hospital	Hospital	Oct-10	Sep-11	Sep-11		Nov-13
643	Suburban Psychiatric Associates	Ambulatory					Jan-14
644	Summit Pharmacy INC	Pharmacy		Mar-14			Mar-14
645	Sun Pharmacy	Pharmacy		Mar-14			Mar-14
646	Susquehanna Obstetrics Gynecology & Nurse Midwifery	Ambulatory	Aug-12				
647	Tansinda Medical Associates	Ambulatory	Oct-12				
648	Target Store #T-1002	Pharmacy		Mar-14			Mar-14
649	Target Store #T-1006	Pharmacy		Mar-14			Mar-14
650	Target Store #T-1257	Pharmacy		Mar-14			Mar-14
651	The Carle Center for Pain Management, LLC	Ambulatory		Mar-14			Mar-14
652	The Carol M Porto Treatment Center	Ambulatory					Jan-14
653	The Casey Health Institute	Ambulatory	Nov-13	Jan-14	Jan-14		Jan-14
654	The Center for Breast Health	Ambulatory	Sep-13	Aug-13	Oct-13		Nov-13
655	The Coordinating Center	Ambulatory	Jul-13			Nov-13	
656	The Kahan Center For Pain Management	Ambulatory	Sep-13	Jan-14	Jan-14		Jan-14
657	The Lions Center for Rehabilitation and Extended Care	Long Term Care	May-13	Jun-13	Jul-13	Jun-13	
658	The Pediatric Group	Ambulatory	Mar-12	Jul-12	Jul-12	Apr-13	
659	The Primary Care Group of Maryland	Ambulatory	Apr-13	Apr-13	Apr-13		Nov-13
660	The Sandra and Malcolm Berman Brain & Spine Instit	Ambulatory		Mar-14			Mar-14
661	Therapeutic Living For Families	Mental Health	Aug-13	Aug-13	Oct-13	Jan-14	
662	Thomas E. Maslen, MD	Ambulatory	Feb-13				Nov-13
663	Tidewater Pharmacy Inc.	Pharmacy					Jan-14
664	Total Family Care	Ambulatory	Aug-13				
665	Total Healthcare	FQHC		Jul-13	Jul-13	Nov-13	Nov-13
666	THC- Division Street	FQHC		Jun-13	Jun-13		Nov-13
667	THC-Kirk Avenue	FQHC		Jul-13	Jul-13		Nov-13
668	THC- Linden Pediatrics	FQHC		Jul-13	Oct-13		Nov-13
669	THC- Men's Health	FQHC		Nov-13	Nov-13		Nov-13
670	THC- Mondawmin	FQHC		May-13	Jul-13		Nov-13
671	THC - Saratoga	FQHC		Nov-13	Nov-13		Nov-13
672	THC- True Health	FQHC		Jul-13	Oct-13		Nov-13
673	THC- Westside	FQHC		Jul-13	Nov-13		Nov-13

CRISP Portal, ENS & PDMP Adoption by Facility

Count	Organization	Type	Portal Participation Agreement*	Training*	Portal Live*	ENS Live*	PDMP Access	
674	Towson Neurology Associates, PA	Ambulatory		Mar-14			Mar-14	
675	True Care Medical	Ambulatory		Mar-14			Mar-14	
676	Trusted Health Plan	Payor	Oct-13			Jan-14		
677	Ulmer Family Medicine	Ambulatory	Feb-12	May-12	May-12	Oct-12	Nov-13	
678	Union Bridge Family Practice	Ambulatory					Jan-14	
679	Union Hospital of Cecil County	Hospital	Feb-11	Sep-12	Sep-12		Nov-13	
680	Union Primary Care Elkton	Ambulatory	Apr-13	Apr-13			Nov-13	
681	Union Neurology Services	Ambulatory					Feb-14	
682	United Health Care	Payor	Sep-13			Nov-13		
683	University of Maryland Charles Regional Medical Center	Hospital	Aug-11	Jan-13	Jan-13		Nov-13	
684	University of Maryland Medical Center	Hospital	Aug-11	Jul-12	Jul-12		Nov-13	
685	Pediatrics at the Harbor	Ambulatory					Jul-13	
686	University Care Heritage Crossing	Ambulatory			May-12	May-13	Aug-13	Nov-13
687	University Care of Edmondson Villiage	Ambulatory			Jun-13	Jun-13	Aug-13	Nov-13
688	University Care of Shipley's Choice	Ambulatory			May-12	Jul-13	Aug-13	
689	University Family Medicine Faculty Physicians	Ambulatory			Apr-13	Apr-13	Mar-13	Nov-13
690	University of Maryland Cardiology Physicians	Ambulatory		Apr-13	Mar-13	Apr-13		
691	University of Maryland Medical Center Midtown Campus	Hospital	Aug-11	Feb-13	Feb-13		Nov-13	
692	University of Maryland Pain Center	Ambulatory					Jan-14	
693	University of Maryland Rehabilitation & Orthopedic Institute	Hospital	Aug-11	Feb-14	Feb-14		Feb-14	
694	University of Maryland Shore Medical Center at Chestertown	Hospital	Aug-11	Mar-13	Mar-13		Nov-13	
695	University of Maryland Shore Medical Center at Dorchester	Hospital	Aug-11	Nov-13	Jan-14		Jan-14	
696	University of Maryland Shore Medical Center at Easton	Hospital	Aug-11	Mar-13	Oct-13			
697	University of MD St. Joseph Medical Center	Hospital	Oct-11	Mar-12	May-12	Aug-12	Nov-13	
698	Upper Bay Counseling & Support Services	Mental Health	Aug-13	Oct-13	Oct-13	Dec-13		
699	University of Maryland Upper Chesapeake Health	Hospital	Nov-11	Aug-12	Aug-12		Nov-13	
700	Vanessa Allend MD	Ambulatory	May-12	Apr-12	Apr-12			
701	Vesta, Inc.	Mental Health	Nov-13					
702	Village at Rockville	Long Term Care	Jun-11	Nov-11	Nov-11			
703	Virgo-Carter Pediatrics	Ambulatory	Jun-12					
704	Vishal Datta, M.D., P.A.	Ambulatory	May-13	May-13	Sep-13			
705	Walnut Street Community Health Center	FQHC	Feb-14					
706	Walgreens #02446	Pharmacy		Mar-14			Mar-14	
707	Walgreens #05408	Pharmacy					Feb-14	
708	Walgreens #05409	Pharmacy		Mar-14			Mar-14	
709	Walgreens #05587	Pharmacy		Mar-14			Mar-14	
710	Walgreens #05686	Pharmacy					Feb-14	
711	Walgreens #06265	Pharmacy		Mar-14			Mar-14	
712	Walgreens #06320	Pharmacy		Mar-14			Mar-14	
713	Walgreens #07357	Pharmacy					Feb-14	
714	Walgreens #07554	Pharmacy		Mar-14			Mar-14	
715	Walgreens #07573	Pharmacy					Feb-14	
716	Walgreens #09028	Pharmacy		Mar-14			Mar-14	
717	Walgreens #09342	Pharmacy		Mar-14			Mar-14	
718	Walgreens #09632	Pharmacy					Feb-14	
719	Walgreens #09926	Pharmacy		Mar-14			Mar-14	
720	Walgreens #09927	Pharmacy		Mar-14			Mar-14	
721	Walgreens #09967	Pharmacy					Feb-14	
722	Walgreens #10063	Pharmacy		Mar-14			Mar-14	
723	Walgreens #10076	Pharmacy		Mar-14			Mar-14	
724	Walgreens #10402	Pharmacy		Mar-14			Mar-14	
725	Walgreens #10539	Pharmacy					Feb-14	
726	Walgreens #10976	Pharmacy					Feb-14	
727	Walgreens #10977	Pharmacy					Feb-14	
728	Walgreens #11054	Pharmacy					Feb-14	
729	Walgreens #11140	Pharmacy		Mar-14			Mar-14	
730	Walgreens #11169	Pharmacy		Mar-14			Mar-14	
731	Walgreens #11283	Pharmacy					Feb-14	
732	Walgreens #11501	Pharmacy		Mar-14			Mar-14	
733	Walgreens #11594	Pharmacy		Mar-14			Mar-14	
734	Walgreens #11949	Pharmacy					Feb-14	
735	Walgreens #11999	Pharmacy					Feb-14	
736	Walgreens #12130	Pharmacy		Mar-14			Mar-14	
737	Walgreens #12266	Pharmacy					Feb-14	

CRISP Portal, ENS & PDMP Adoption by Facility

Count	Organization	Type	Portal Participation Agreement*	Training*	Portal Live*	ENS Live*	PDMP Access
738	Walgreens #12324	Pharmacy					Feb-14
739	Walgreens #12433	Pharmacy		Mar-14			Mar-14
740	Walgreens #12472	Pharmacy		Mar-14			Mar-14
741	Walgreens #12560	Pharmacy		Mar-14			Mar-14
742	Walgreens #12748	Pharmacy		Mar-14			Mar-14
743	Walgreens #12790	Pharmacy		Mar-14			Mar-14
744	Walgreens #12846	Pharmacy					Feb-14
745	Walgreens #13149	Pharmacy		Mar-14			Mar-14
746	Walgreens #13457	Pharmacy		Mar-14			Mar-14
747	Walgreens #13606	Pharmacy		Mar-14			Mar-14
748	Walgreens #13840	Pharmacy		Mar-14			Mar-14
749	Walgreens #13892	Pharmacy					Feb-14
750	Walgreens #13893	Pharmacy					Feb-14
751	Walgreens #15117	Pharmacy					Feb-14
752	Walgreens #15185	Pharmacy					Feb-14
753	Walgreens #15189	Pharmacy					Feb-14
754	Walgreens #15284	Pharmacy		Mar-14			Mar-14
755	Walgreens #15958	Pharmacy		Mar-14			Mar-14
756	Walgreens #15978	Pharmacy		Mar-14			Mar-14
757	Walgreens #15979	Pharmacy		Mar-14			Mar-14
758	Walgreens #15980	Pharmacy		Mar-14			Mar-14
759	Walgreens #5331	Pharmacy		Mar-14			Mar-14
760	Walgreens #6396	Pharmacy		Mar-14			Mar-14
761	Walgreens #7678	Pharmacy		Mar-14			Mar-14
762	Walgreens #9028	Pharmacy					Feb-14
763	Walgreens #9032	Pharmacy					Feb-14
764	Walgreens Pharmacy	Pharmacy					Feb-14
765	Wegmans Food Markets #53	Pharmacy		Mar-14			Mar-14
766	Wegmans Food Markets #54	Pharmacy		Mar-14			Mar-14
767	Wegmans Food Markets #60	Pharmacy					Feb-14
768	Wegmans Germantown	Pharmacy		Mar-14			Mar-14
769	Western Maryland Health System Pharmacy	Pharmacy					Feb-14
770	Washington Adventist Hospital	Hospital	Nov-10	Apr-11	Apr-11		Nov-13
771	Washington County Health Department	Government Agency					Jan-14
772	Washington Open MRI	Radiology	Nov-12				
773	Washington Radiology	Radiology	Oct-13				
774	Way Station, Inc.	Ambulatory	Mar-13			Apr-13	Jan-14
775	Wayne Meyer, MD	Ambulatory	Feb-14				
776	Wegman's Food Markets #60	Pharmacy					Feb-14
777	Wellspring Family Medicine	Ambulatory	Jun-12				
778	Western Maryland Health System	Hospital	Jan-11	Dec-11	Jan-12		
779	Western Maryland Health System Pharmacy	Pharmacy					Feb-14
780	Western Maryland Recovery Services	Mental Health	Oct-13	Oct-13	Oct-13		
781	Wexford Health Sources	Ambulatory	Dec-12	Apr-13	Apr-13		Nov-13
782	White Plains Primary Care	Ambulatory					Jan-14
783	Whitesell's Pharmacy	Pharmacy					Feb-14
784	Whitman-Walker Health	Ambulatory	Nov-13				
785	Wicomico County Health Department	Government Agency	Jan-13	Apr-13	Apr-13		Nov-13
786	Williamsport Pharmacy	Pharmacy		Mar-14			Mar-14
787	Willie M. Yu MD PC	Ambulatory	Dec-13				Feb-14
788	Womens Health Specialists	Ambulatory	Jul-12	Aug-12	Aug-12		Nov-13
789	Womens International Pharmacy	Pharmacy		Mar-14			Mar-14
790	Woodbine Pharmacy	Pharmacy					Feb-14
791	Worcester County Health Department	Government Agency					Nov-13
792	Your Docs In	Ambulatory	Dec-13	Mar-14	Mar-14		
793	Zenith Medical Care, LLC	Ambulatory	Jul-13				
Total			379	455	285	86	548

Key Terms and Notes:

CRISP Portal: The CRISP Portal is a standalone system available via the Internet that provides patient health information from Maryland hospitals and other providers who are connected to the HIE. Currently, select information is available via the portal, including patient demographics, laboratory results, radiology reports, discharge summaries, operative and consult notes, and medication fill history

Encounter Notification System (ENS): A system that notifies providers when one of their patients has an encounter at a Maryland hospital, which includes patient admission, discharge, and transfer activity

ENS Live: The number of organizations receiving ENS alerts

CRISP Portal, ENS & PDMP Adoption by Facility

Count	Organization	Type	Portal Participation Agreement*	Training*	Portal Live*	ENS Live*	PDMP Access
-------	--------------	------	---------------------------------	-----------	--------------	-----------	-------------

Green Shading Indicates Completed: Practices that have completed the category are shaded green with the month indication of completion

Participation Agreement: Providers sign a participation agreement with CRISP in order to query the CRISP Portal

Patient Education: Education materials are provided to practices to hand out to patients regarding the CRISP Portal before a practice may begin using the Portal

PDMP (Prescription Drug Monitoring Program) Access: Number of organizations using PDMP services; records of prescribing and dispensing of controlled dangerous substances available in CRISP query portal that went live as a pilot in November 2013

Portal Live: An organization has completed the credentialing, legal, and training process and has at least one user approved to use the Portal

Portal Training: CRISP provides training to clinical providers in order for participants to learn how to access clinical information in real-time. Training includes information about accessing the Portal and patient education. Training is the first person trained at the facility

* Although most providers/practices follow a sequence (provider agreement, training, usage), some practices completed the steps in a different order; metrics in chart represent a snapshot of CRISP data available at the end of each month, certain dates may fluctuate from month to month

**Pharmacies are exempt from signing CRISP Participation Agreement

***JHCP Participation Agreement date is merged because there is one Agreement for all JHCP sites

CRISP Other Projects

#	Project Name	Project Description
1	Regional Extension Center Operations	Provides support to 1,000 small practices to achieve meaningful use by providing direct technical assistance through Management Service Organizations
2	Direct Secure Messaging	Provides the ability for an individual clinician or organization to send or receive Secure Email, to support a variety of clinical purposes
3	State Innovation Model (SIM) Reporting and Mapping	Partnering with the Department of Health and Mental Hygiene (DHMH) on the development of hospital encounter reporting and mapping capabilities to support the community integrated medical home model
4	Health Enterprise Zone (HEZ) Dash-boarding and Mapping	Leveraging the capabilities developed under the SIM grant, to offer dash-boarding and technical assistance for the HEZ program
5	Prescription Drug Monitoring Program (PDMP)	The PDMP makes records of the prescribing and dispensing of controlled dangerous substances available in the CRISP query portal, in an effort to stem the rise of prescription drug abuse and diversion. The PDMP project went live in mid-December.
6	Health Benefit Exchange (HBE) - Provider Information Management	CRISP is obtaining provider information from the Qualified Health Plans participating in Maryland's HBE and partnering with Optum to produce a verified provider demographics source so that consumers of the HBE can search for health insurance plans by provider name
7	HBE - All Payer Claims Database Unique Identifier	Relying on the Initiate Master Patient Index, CRISP is attaching a unique patient identifier to carrier eligibility files sent to MHCC to enable insights into member churn between commercial Qualified Health Plans and Medicaid
8	HBE - Care Summary	In its early stage, this project would allow a new enrollee in a health plan to choose to send prior clinical records to care coordinators affiliated with their new health plan, such that proactive services may be provided in advance of a new billing history building up
9	Public Health - Electronic Lab Reporting	To support reporting for the public health meaningful use measure, CRISP is sending a copy of electronic reportable labs to the State via Health Level Seven (HL7), providing assistance with the formatting of the lab messages as necessary
10	Public Health - Immunization Reporting	Hospitals will send Immunization messages via HL7 to CRISP which will pass them along to the State to a Secure File Transfer Protocol (SFTP) location
11	Public Health - Syndromic Surveillance	CRISP will send a copy of existing discharge (A04) and update (A08) messages to DHMH via HL7 to an SFTP location, providing assistance with the formatting of the admission, discharge, and transfer (ADT) messages as necessary
12	Department of Public Safety and Correctional Services Query	Providing access to the CRISP Query portal for Department of Corrections and users at the locked ward at Bon Secours Hospital
13	Challenge Grant	Providing financial support to three independent nursing homes so they can invest in health IT. Each grantee is also using the encounter notification service (ENS) to improve transitions of care with hospitals
14	Single Sign On	Implementing additional HIE capabilities to Medicaid providers, such as single sign on to the HIE
15	DC Hospital Integration	Working with DC Department of Health Care Finance (DHCF) to support DC acute care hospital connectivity with the CRISP HIE infrastructure
16	Medicaid Outreach DHMH	Partnered with DHMH for outreach to eligible professionals and hospitals in regards to the Medicaid Meaningful Use Incentives Program in Maryland