

# CRISP Monthly Reports

January 2014

The Chesapeake Regional Information System for our Patients (CRISP), the State-Designated health information exchange (HIE), submits monthly status reports to the Maryland Health Care Commission (MHCC). The monthly reports provide updates to the HIE program and use of HIE services, and the Regional Extension Center (REC) program. The MHCC's Center for Health Information Technology & Innovative Care Delivery uses the information to facilitate development of the State-Designated HIE, craft policy around privacy and security, and develop initiatives to expand health information technology adoption, including electronic health record adoption and meaningful use.

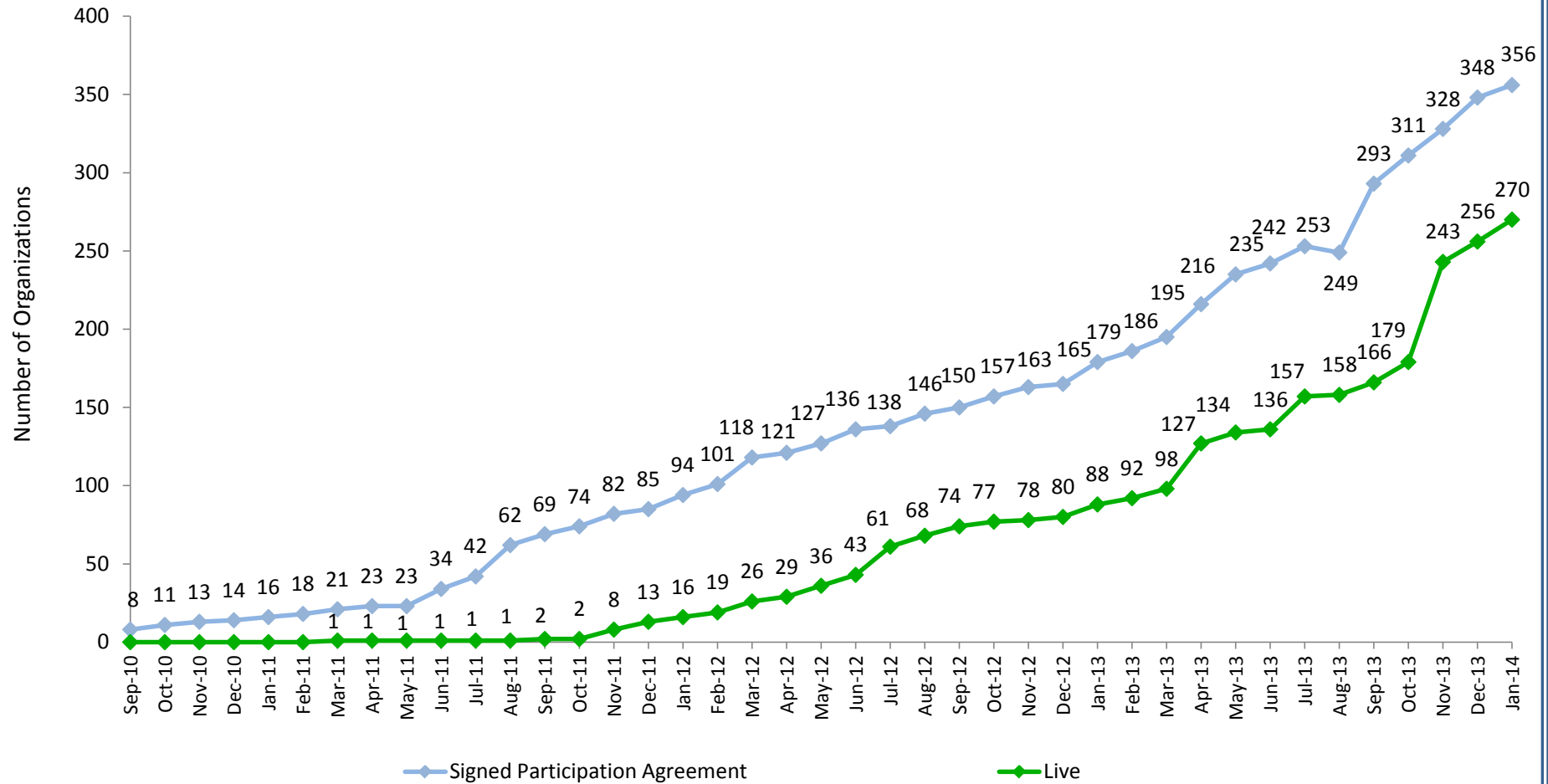
<b>At a Glance</b>					
HIE Category	New November	New December	New January	Total* #	Total* %
<b>Ambulatory Practice Data Consumption</b> (# of organizations) N=6,537					
Signed participation agreements - CRISP Portal	6	7	5	207	3%
CRISP portal live	4	7	12	173	2.6%
Direct message accounts live	14	15	23	96	1.5%
Encounter notification service live	4	7	1	48	0.7%
<b>Hospital Data Submission</b> (# of hospitals) N=46					
Laboratory reports	0	0	0	31	67%
Radiology reports	0	0	2	37	80%
Transcribed reports	0	1	0	33	73% <sup>1</sup>
<b>Long Term Care Data Consumption</b> (# of organizations) N=235					
Signed participation agreements - CRISP Portal	0	0	0	38	16%
CRISP portal live	0	1	2	21	9%
Encounter notification service live	0	1	0	6	3%
<b>Query Portal Usage</b>					
Number of CRISP Portal queries <sup>2</sup>	15,339	16,231	21,010 <sup>3</sup>		
Single-sign on live in Maryland hospitals	0	0	0	5	11%

\*Totals are cumulative

Notes:

- Garrett County Memorial Hospitals has no plans to submit transcribed reports to CRISP
- Number of CRISP Portal queries not listed in Total # and Total % columns because CRISP Portal queries are not calculated based on a cumulative total over time
- Increase in CRISP Portal queries is due to an increase in number of users who have access to the CRISP Portal; majority of new users have Prescription Drug Monitoring Program account access.

## CRISP Portal Adoption

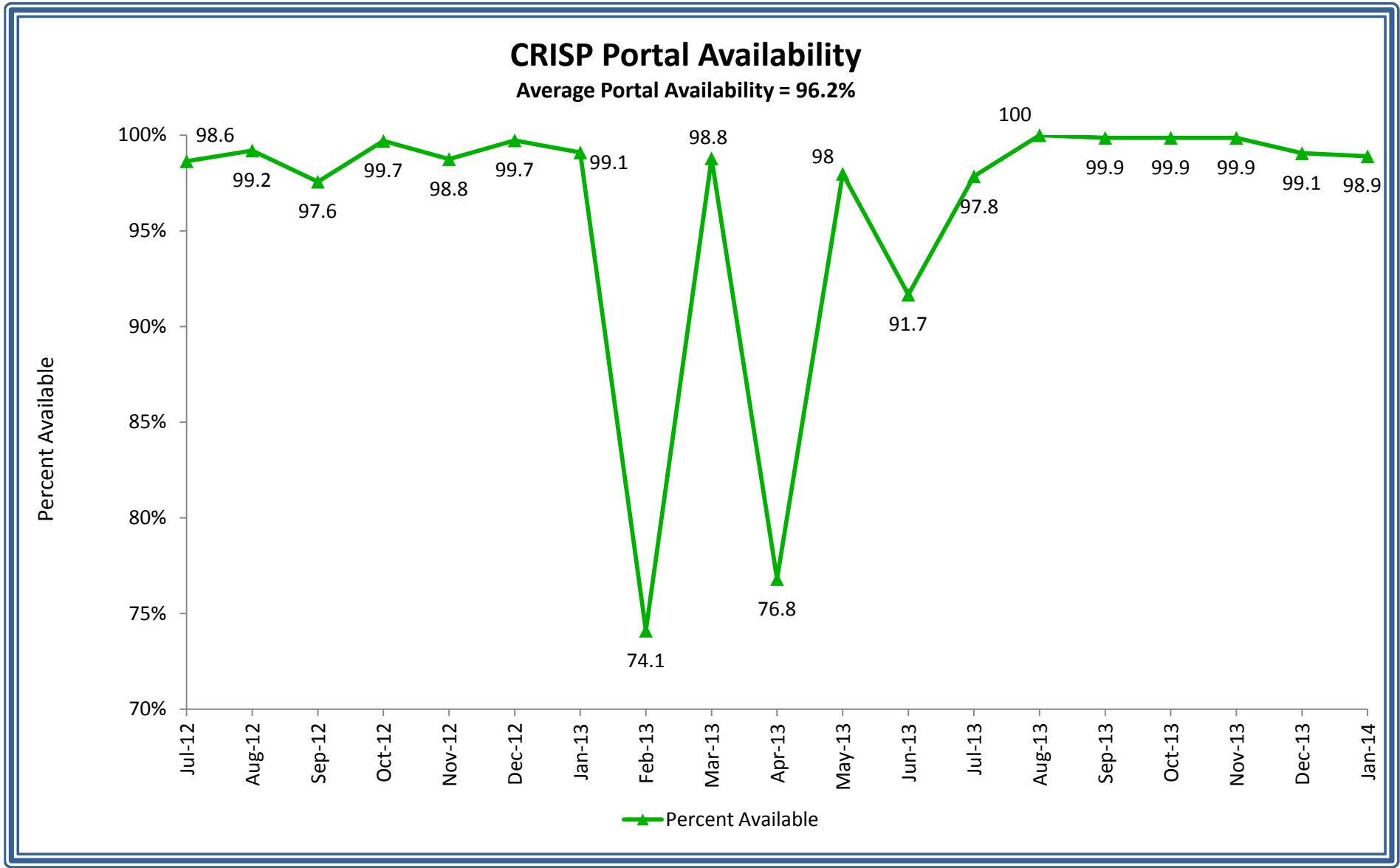


**Key Terms:**

**CRISP Portal:** A standalone web-based system that contains patient health information from Maryland hospitals and other providers connected to the HIE. Information available via the portal includes patient demographics, laboratory results, radiology reports, discharge summaries, operative and consult notes, and medication fill history

**Participation Agreement:** Providers sign a participation agreement with CRISP in order to query the CRISP Portal

**Live:** An organization has completed the credentialing, legal, and training process and has at least one user approved to use the Portal

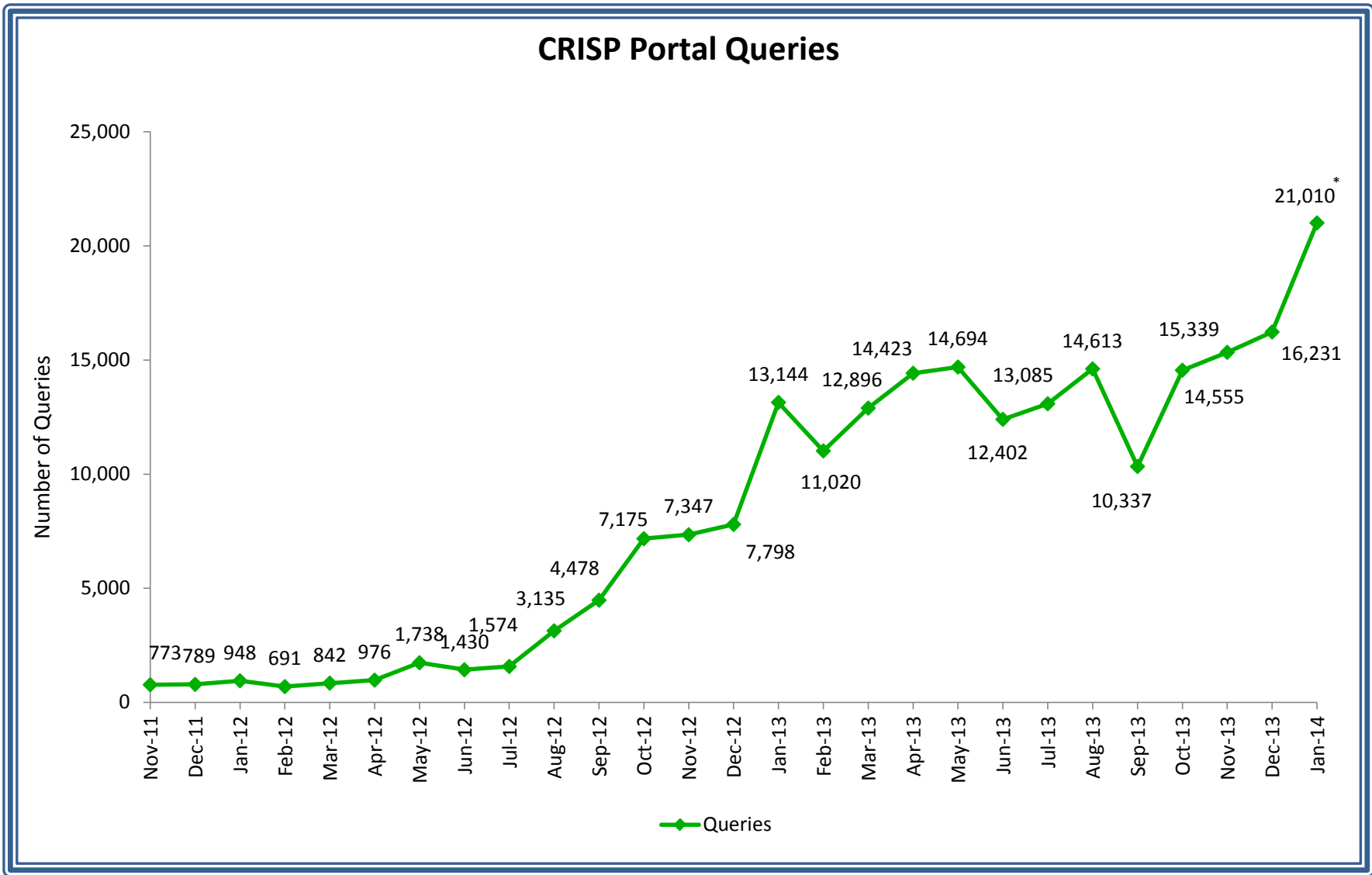


**Key Terms:**

**CRISP Portal:** A standalone web-based system that contains patient health information from Maryland hospitals and other providers connected to the HIE. Information available via the portal includes patient demographics, laboratory results, radiology reports, discharge summaries, operative and consult notes, and medication fill history

**Portal Availability:** The percent of hours that the portal is live out of all possible hours in a month

**Percent Available:** The percent of hours that the portal is available during the month



**Key Terms:**

**CRISP Portal:** The CRISP Portal is a standalone system available via the Internet that provides patient health information from Maryland hospitals and other providers who are connected to the HIE. Currently, select information is available via the portal, including patient demographics, laboratory results, radiology reports, discharge summaries, operative and consult notes, and medication fill history

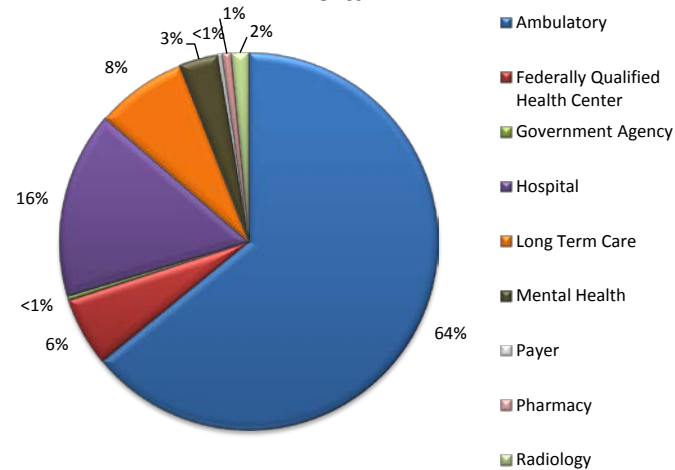
**Queries:** Number of searches within the CRISP Portal per month

\*Increase in CRISP Portal queries is due to an increase in number of users who have access to the CRISP Portal; majority of new users have Prescription Drug Monitoring Program account access.

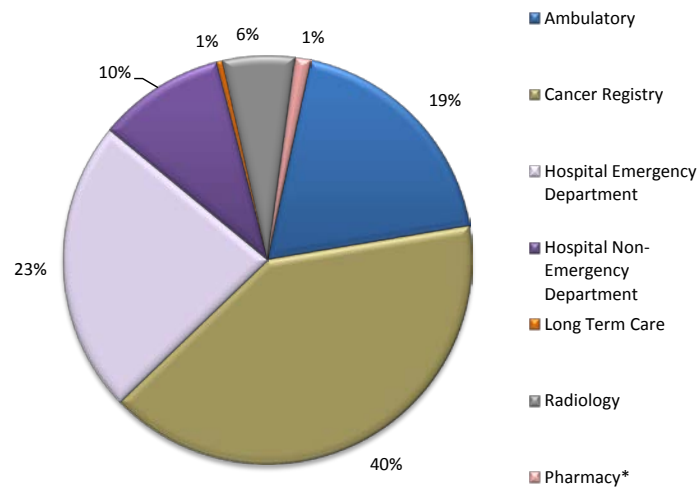
## CRISP Portal Queries by Provider Type

Month	Provider Type										Total
	Ambulatory	Cancer Registry	Hospital Emergency Department	Hospital Non-Emergency Department	Long Term Care	Radiology	Pharmacy*				
Apr-12	#	315	213	285	25	79	58	-	-	976	
	%	32	22	29	3	8	6	-	-	100	
May-12	#	388	722	427	42	91	68	-	-	1,738	
	%	22	42	25	2	5	4	-	-	100	
Jun-12	#	331	475	315	38	181	88	-	-	1,430	
	%	23	33	22	3	13	6	-	-	100	
Jul-12	#	527	459	382	49	9	149	-	-	1,574	
	%	33	29	24	3	1	9	-	-	100	
Aug-12	#	1,027	715	781	96	17	499	-	-	3,135	
	%	33	23	25	3	1	16	-	-	100	
Sep-12	#	1,024	2,110	992	0	17	334	-	-	4,478	
	%	23	47	22	0	0	7	-	-	100	
Oct-12	#	1,449	3,890	1,193	176	19	448	-	-	7,175	
	%	20	54	17	2	0	6	-	-	100	
Nov-12	#	1,930	3,218	1,465	189	14	531	-	-	7,347	
	%	26	44	20	3	0	7	-	-	100	
Dec-12	#	1,955	2,948	1,516	233	53	1,093	-	-	7,798	
	%	25	38	19	3	1	14	-	-	100	
Jan-13	#	2,066	6,982	1,955	455	40	1,646	-	-	13,144	
	%	16	53	15	3	0	13	-	-	100	
Feb-13	#	1,414	6,176	1,987	596	61	786	-	-	11,020	
	%	13	56	18	5	1	7	-	-	100	
Mar-13	#	1,956	6,122	3,103	891	31	793	-	-	12,896	
	%	15	47	24	7	0	6	-	-	100	
Apr-13	#	2,137	7,017	3,370	1,056	60	783	-	-	14,423	
	%	15	49	23	7	0	5	-	-	100	
May-13	#	1,606	7,922	3,507	979	105	575	-	-	14,694	
	%	11	54	24	7	1	4	-	-	100	
Jun-13	#	1,831	5,630	3,256	1,023	65	597	-	-	12,402	
	%	15	45	26	8	1	5	-	-	100	
Jul-13	#	2,323	6,003	3,027	1,180	19	533	-	-	13,085	
	%	18	46	23	9	0	4	-	-	100	
Aug-13	#	2,065	7,623	2,858	1,376	118	573	-	-	14,613	
	%	14	52	20	9	1	4	-	-	100	
Sep-13	#									10,337	
	%										
Oct-13	#	3,114	4,116	3,231	3,150	53	618	273	-	14,555	
	%	21	28	22	22	0	4	2	-	100	
Nov-13	#	2,378	5,111	3,993	2,951	8	491	407	-	15,339	
	%	16	33	26	19	0	3	3	-	100	
Dec-13	#	3,150	4,407	4,723	2,986	8	400	557	-	16,231	
	%	19	27	29	18	0	2	3	-	100	
Jan-14 **	#	6,773	2,766	5,995	3,510	17	636	1,313	-	21,010	
	%	32	13	29	17	0	3	6	-	100	
<b>Total</b>	<b>#</b>	<b>39,760</b>	<b>84,626</b>	<b>48,361</b>	<b>21,001</b>	<b>1,065</b>	<b>11,700</b>	<b>2,550</b>	<b>-</b>	<b>219,400</b>	
<b>Monthly Average</b>	<b>#</b>	<b>1,893</b>	<b>4,030</b>	<b>2,303</b>	<b>1,000</b>	<b>51</b>	<b>557</b>	<b>638</b>	<b>-</b>	<b>9,973</b>	

### Types of Providers with Access to the CRISP Portal



### Total CRISP Portal Queries by Provider Type



**Key Terms:**

**CRISP Portal:** The CRISP Portal is a standalone system available via the Internet that provides patient health information from Maryland hospitals and other providers connected to the HIE. Currently, select information is available via the portal, including patient demographics, laboratory results, radiology reports, discharge summaries, operative and consult notes, and medication fill history

**Queries:** Number of searches within the CRISP Portal per month

\*Pharmacy data available beginning in October 2013

\*\*Increase in total CRISP Portal queries for January 2014 is due to an increase in number of users who have access to the CRISP Portal; majority of new users have Prescription Drug Monitoring Program account access.

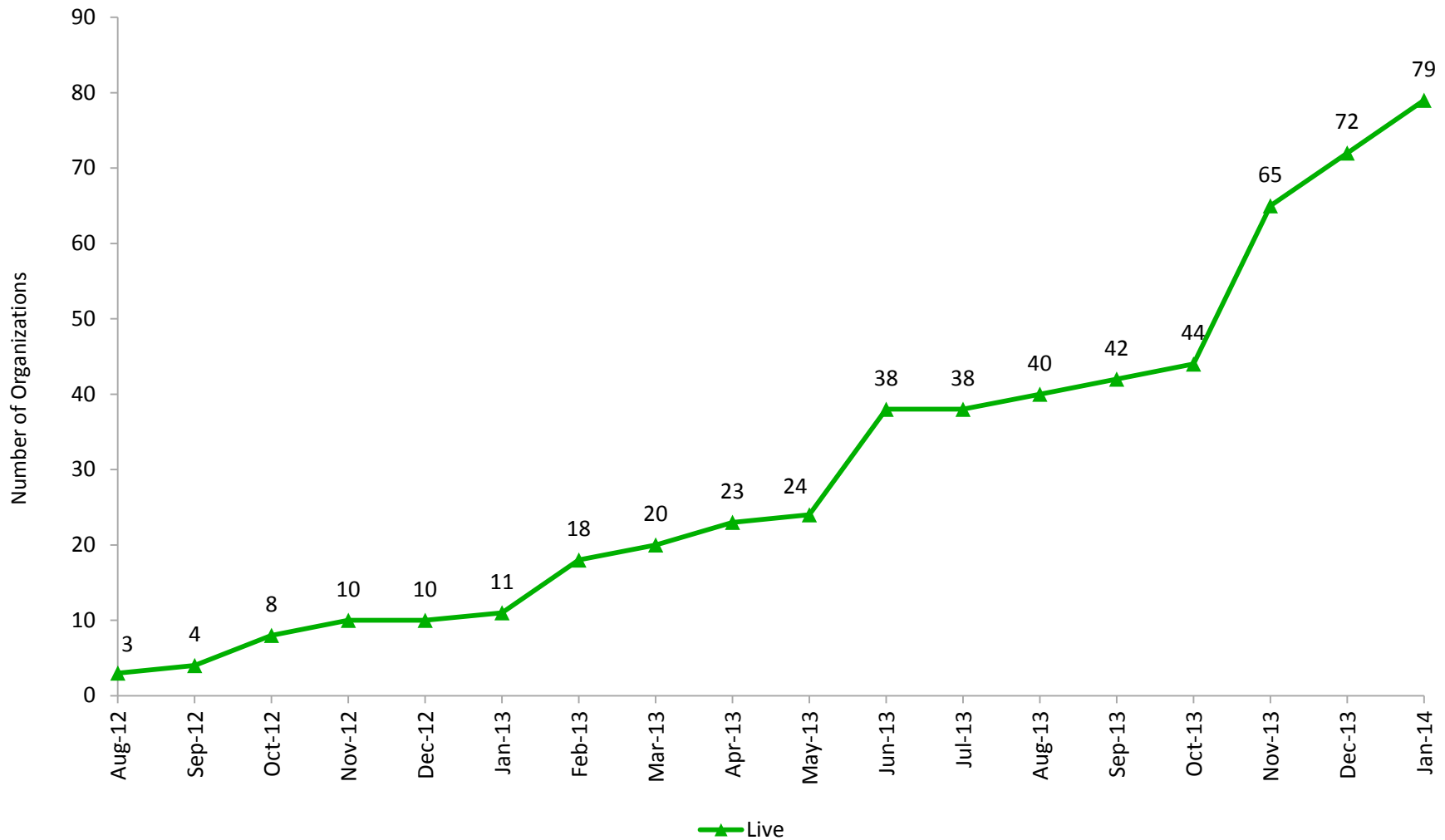


**Key Terms:**

**Direct Message Accounts:** A secure and encrypted e-mail service that supports electronic communication between health care providers

**Live:** Users live with a CRISP Direct Messaging account

## Encounter Notification Service Adoption



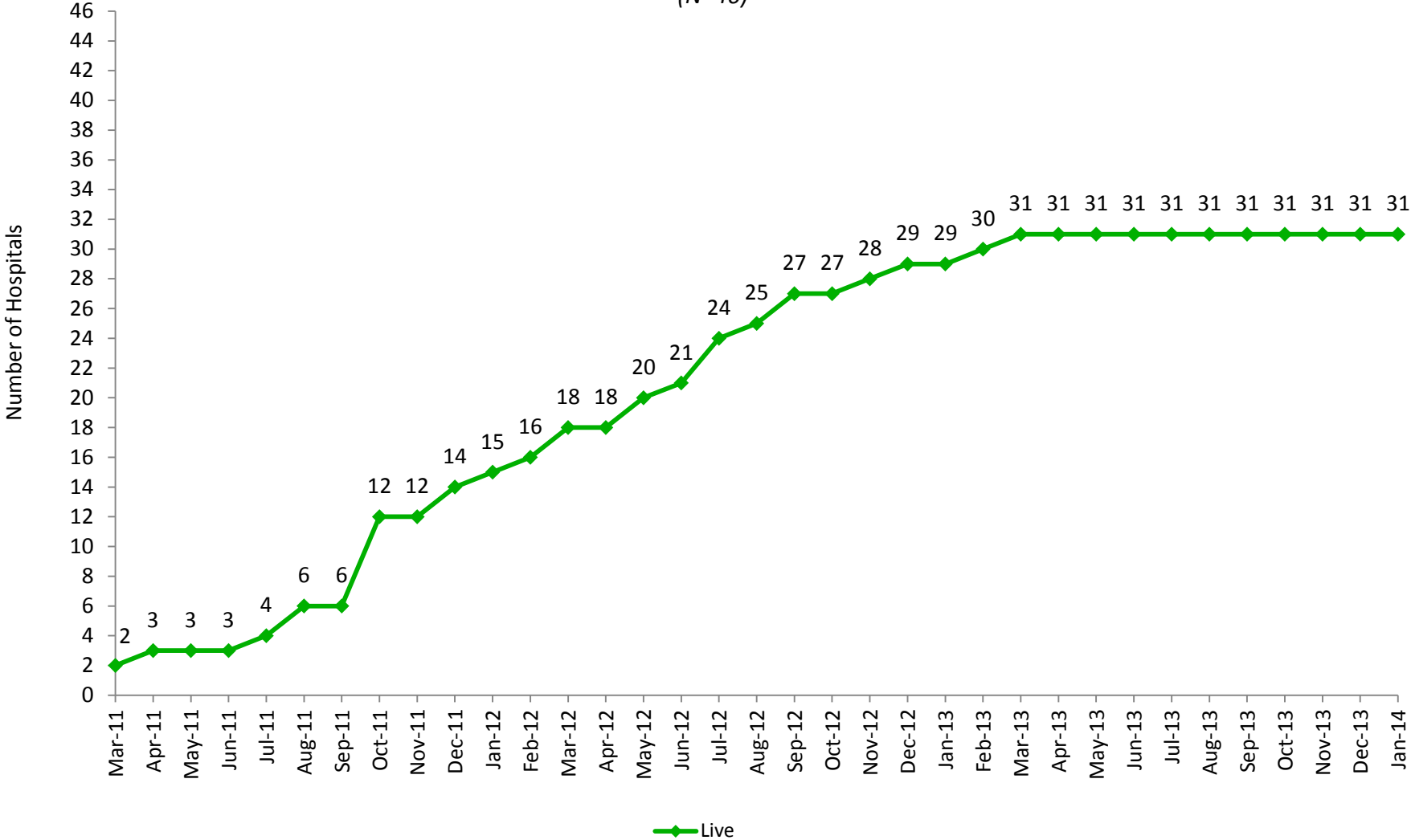
### **Key Terms:**

**Encounter Notification System (ENS):** A system that notifies providers when one of their patients has an encounter at a Maryland hospital, which includes patient admission, discharge, and transfer activity

**Live:** The number of organizations receiving ENS alerts

# Hospital Data Submission Laboratory Reports Live

(N=46)



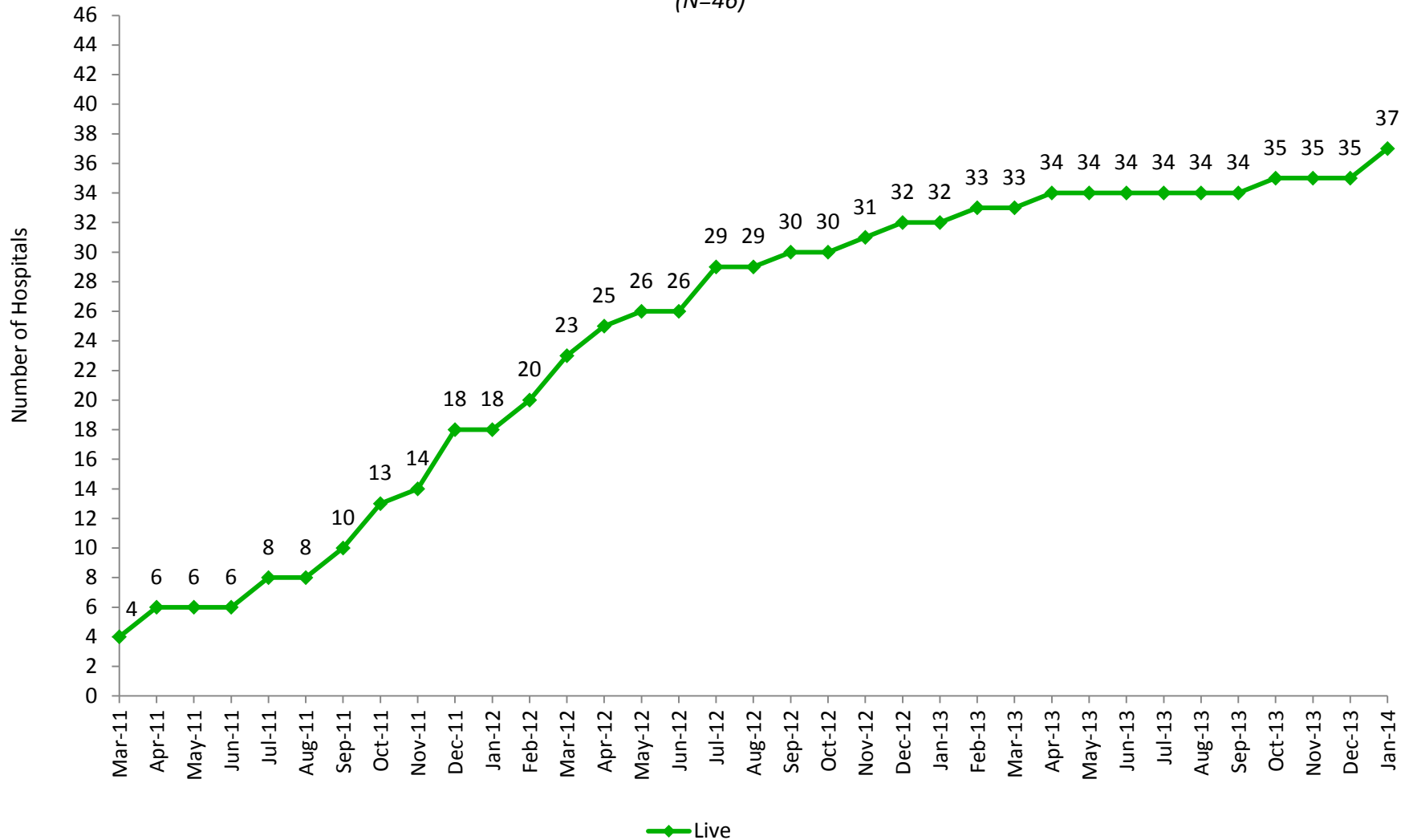
**Key Terms:**

**Live:** The number of hospitals using the laboratory documents exchange service

**N:** The number of acute care hospitals in Maryland

## Hospital Data Submission Radiology Reports Live

(N=46)



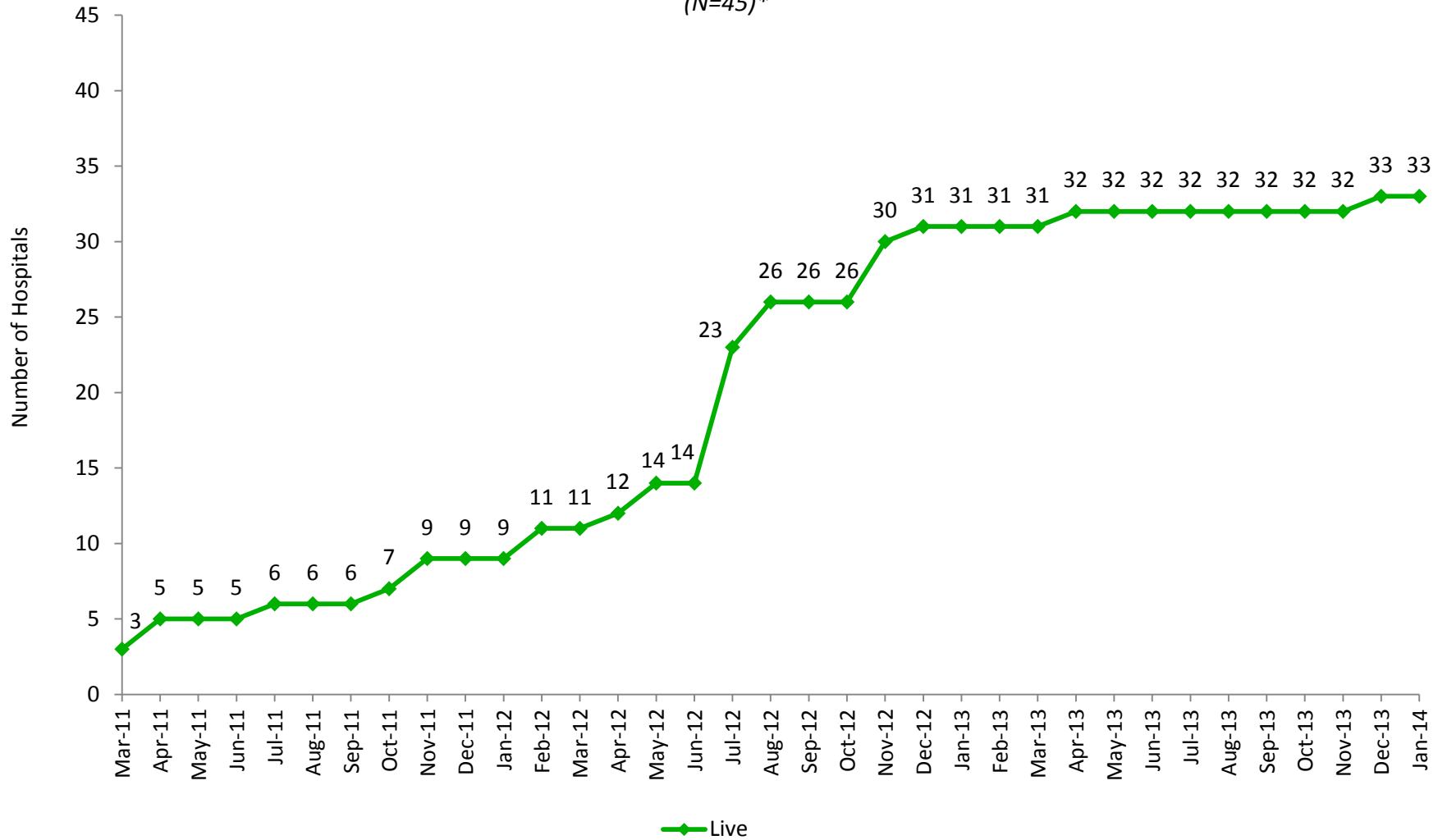
### Key Terms:

**Live:** The number of hospitals using the radiology documents exchange service

**N:** The number of acute care hospitals in Maryland

## Hospital Data Submission Transcribed Reports Live

(N=45)\*



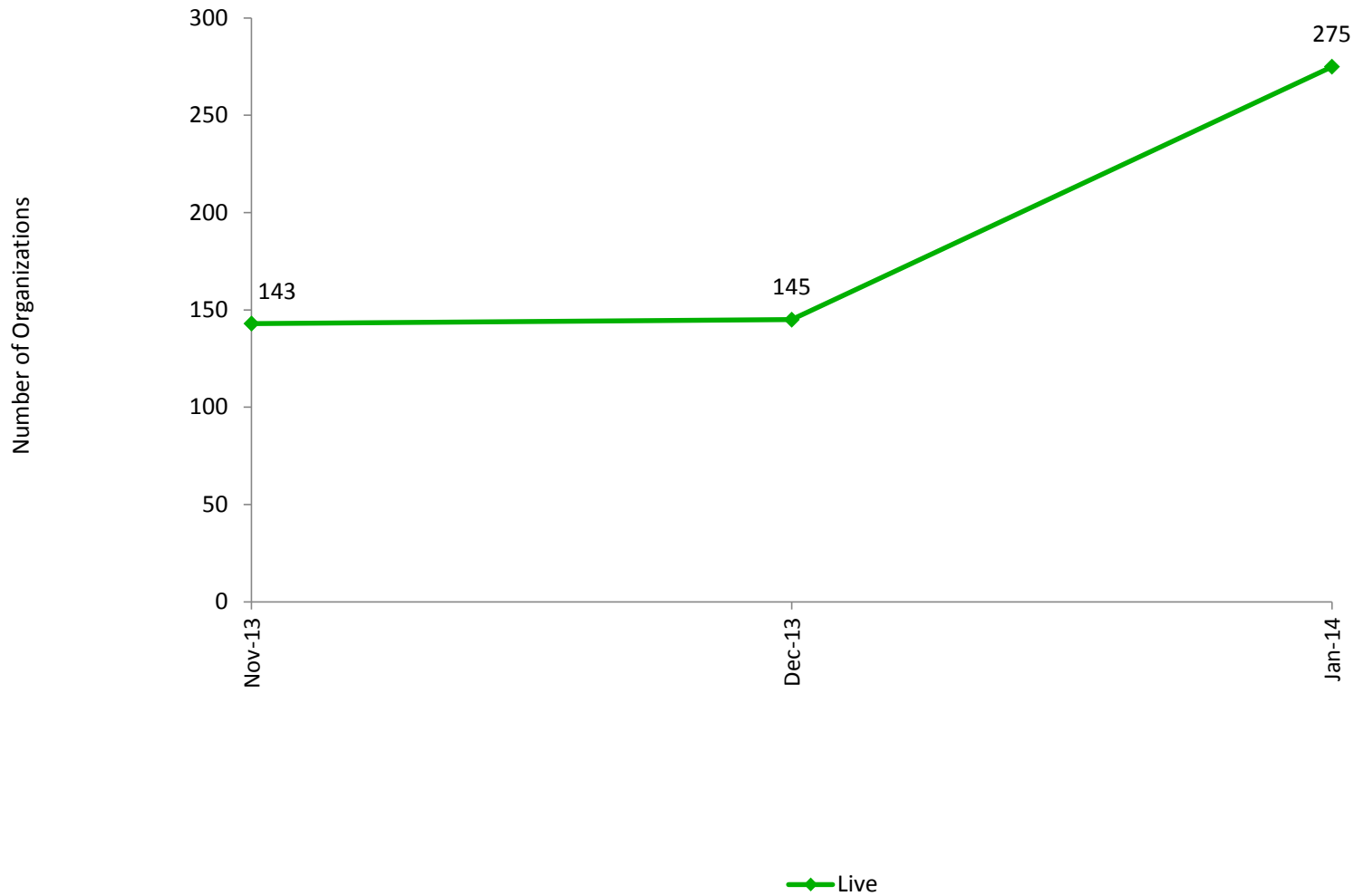
**Key Terms:**

**Live:** The number of hospitals using the transcribed exchange service

**N:** The number of acute care hospitals in Maryland

\*Garrett County Memorial Hospital has no plans to submit transcribed reports to CRISP

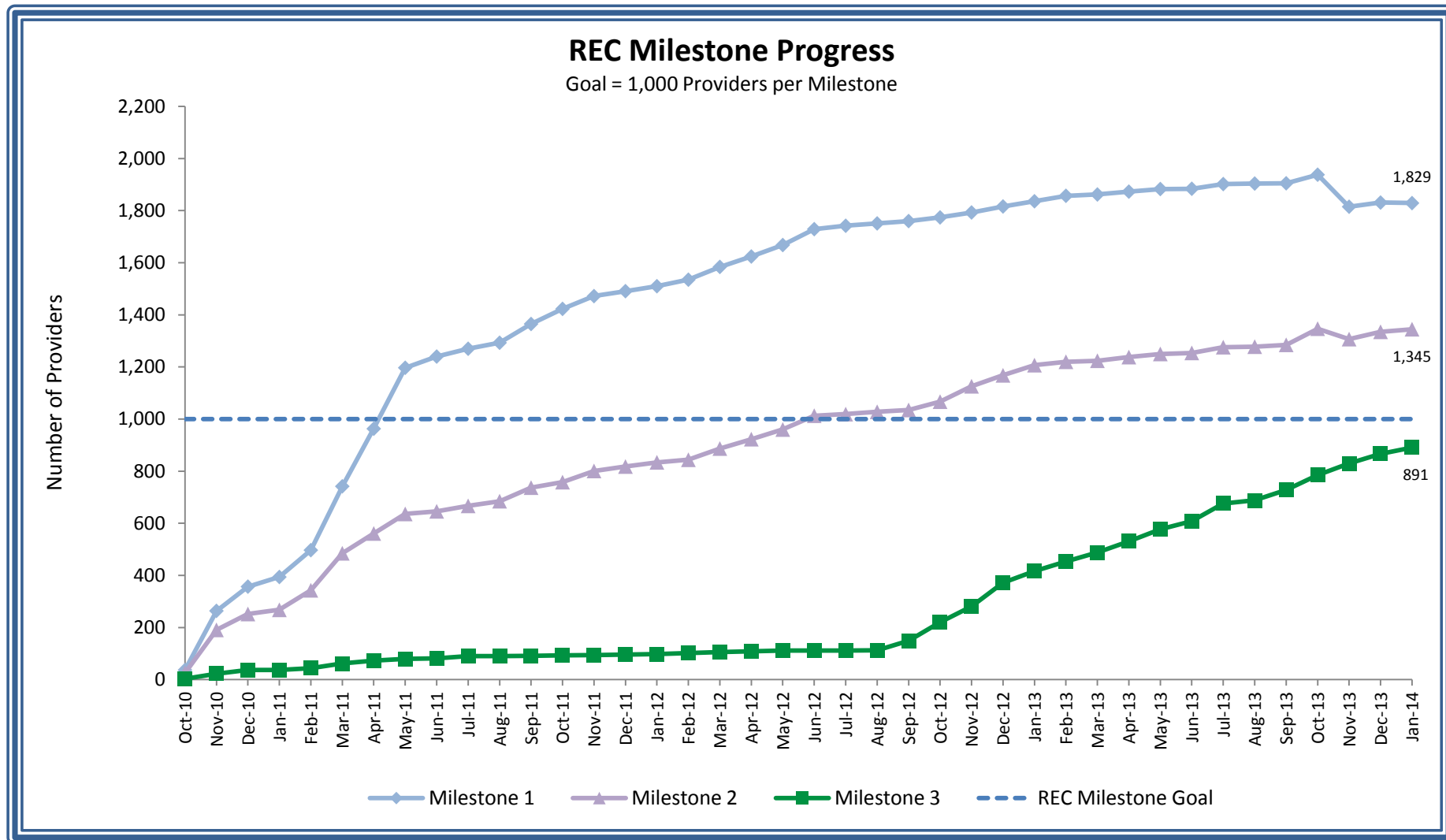
## Prescription Drug Monitoring Program



**Key Terms:**

**Live:** The number of organizations using the PDMP services

**Prescription Drug Monitoring Program:** Records of prescribing and dispensing of controlled dangerous substances available in CRISP query portal that went live as a pilot in November 2013



**Key Terms:**

**REC:** The Regional Extension Center (REC) provides technical assistance to priority care providers in adopting and using an electronic health record (EHR)

**Milestone 1:** A priority primary care provider that has signed a participation agreement with a management service organization

**Milestone 2:** A priority primary care provider that has adopted an EHR and is using certain functionalities of the system

**Milestone 3:** A priority primary care provider that has achieved meaningful use defined by the Centers for Medicare & Medicaid Services

**REC Milestone Goal:** The milestone goal was established by the Office of the National Coordinator for Health Information Technology

REC Progress						
Milestone	Provider had an EHR when signed up with the program		Provider did not have an EHR at sign up with the program		Total	
	#	%	#	%	#	%
Milestone 1	743	41	1,086	59	1,829	183
Milestone 2	697	52	648	48	1,345	135
Milestone 3	432	48	459	52	891	89

**Key Terms:**

**REC:** The Regional Extension Center (REC) provides technical assistance to priority care providers in adopting and using an electronic health record (EHR)

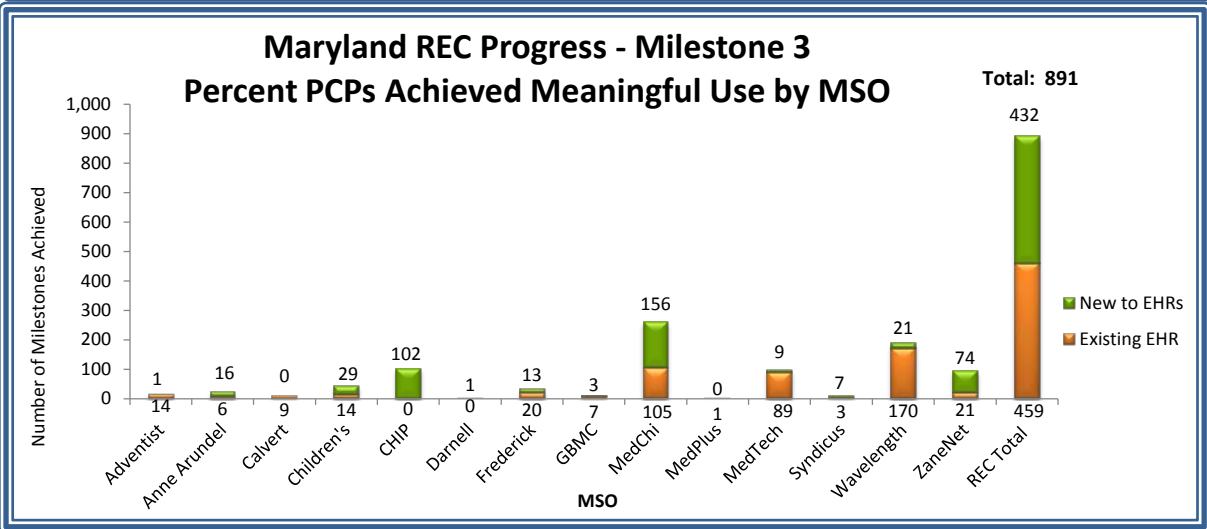
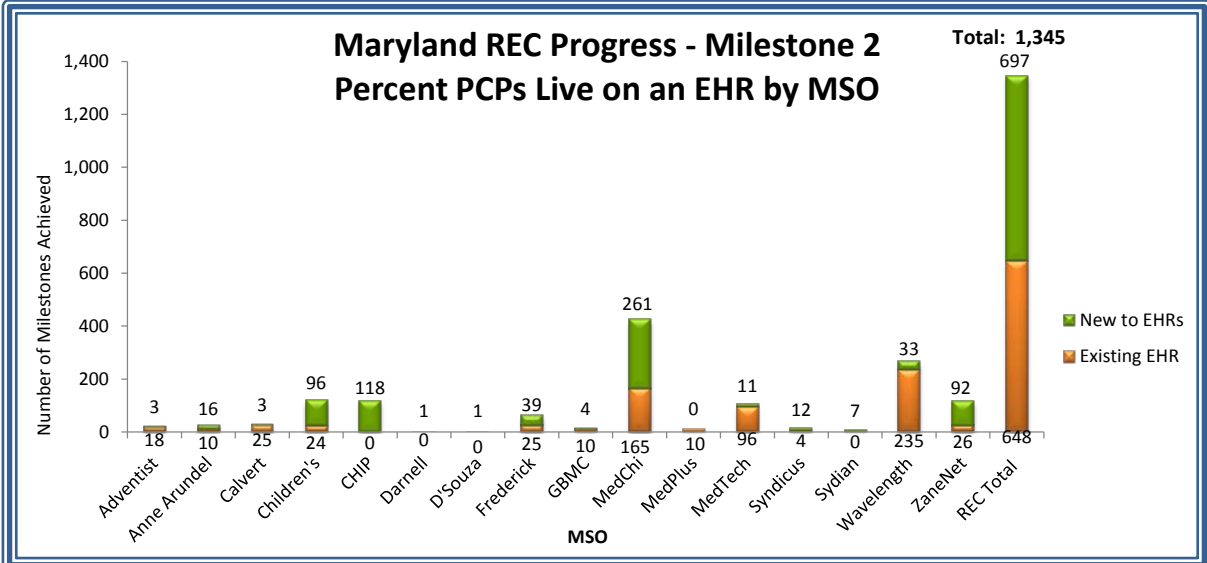
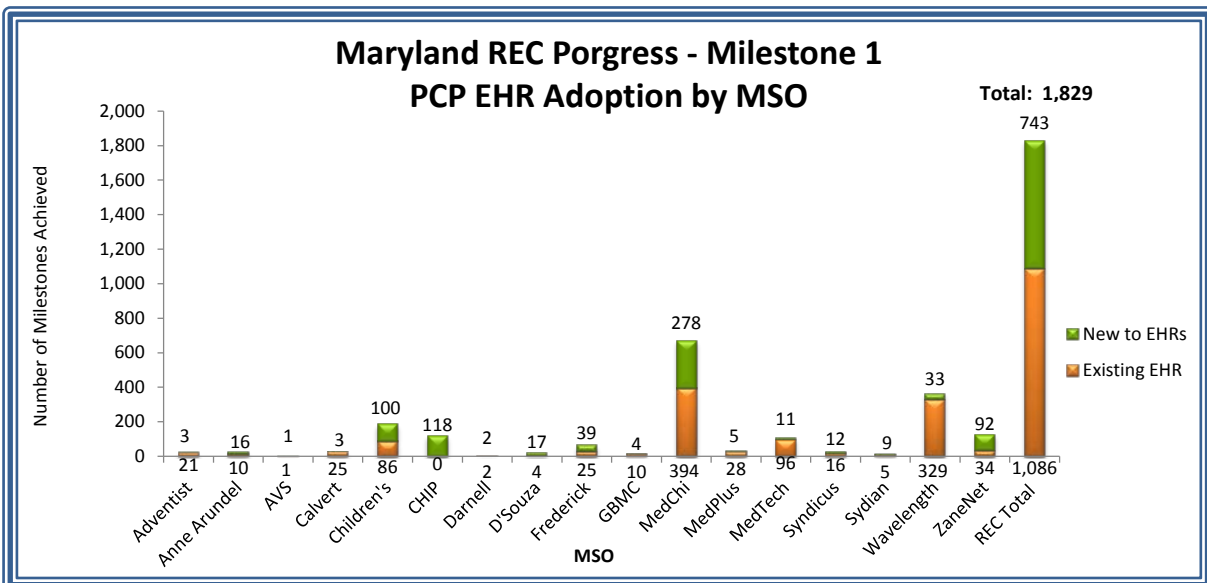
**Milestone 1:** A priority primary care provider that has signed a participation agreement with a management service organization

**Milestone 2:** A priority primary care provider that has adopted an EHR and is using certain functionalities of the system

**Milestone 3:** A priority primary care provider that has achieved meaningful use defined by the Centers for Medicare & Medicaid Services

**REC Milestone Goal:** The milestone goal was established by the Office of the National Coordinator for Health Information Technology





**Key Terms:**

**REC:** The Regional Extension Center (REC) provides technical assistance to priority care providers in adopting and using an electronic health record (EHR)

**Milestone 1:** A priority primary care provider (PCP) that has signed a participation agreement with a management service organization (MSO)

**Milestone 2:** A PCP that has adopted an EHR and is using certain functionalities of the system

**Milestone 3:** A PCP that has achieved meaningful use defined by the Centers for Medicare & Medicaid Services

**Primary care provider:** Primary-care providers in individual and small group practices (fewer than 10 physicians and/or other health care professionals with prescriptive privileges) primarily focused on primary care; and physicians, physician assistants, or nurse practitioners who provide primary care services in public and critical access hospitals, community health centers, rural health clinics, and in other settings that predominantly serve uninsured, underinsured, and medically underserved populations

## Hospital Data Submission and Use

Count	Hospital	Current Status of Data Submission			Use of Services		
		Laboratory Reports	Radiology Reports	Transcribed Documents	Portal	Portal - Single Sign On*	ENS
1	Anne Arundel Medical Center	Mar-12	Mar-12	40	Jul-12	5	Sep-13
2	Atlantic General Hospital	Jun-11	Jun-11	Jun-11	Mar-12	5	17
3	Baltimore Washington Medical Center	40	Jan-14	40	Mar-12	5	17
4	Bon Secours Baltimore Health System	Feb-13	Feb-13	40	Jan-13	5	17
5	Calvert Memorial Hospital	Dec-12	Dec-12	Dec-12	Feb-13	5	17
6	Carroll Hospital Center	May-12	Apr-12	Apr-12	Jul-12	5	17
7	Doctors Community Hospital	Sep-12	Sep-13	Dec-13	Apr-13	5	Jun-13
8	Edward McCready Memorial Hospital	Aug-12	40	40	40	5	17
9	Fort Washington Medical Center	Sep-12	Mar-12	May-12	Sep-12	5	17
10	Frederick Memorial Hospital	Mar-12	Dec-11	30	Jul-12	5	17
11	Garrett County Memorial Hospital	Jun-11	Apr-12		40	5	17
12	Greater Baltimore Medical Center	Nov-12	Sep-12	Sep-12	Jun-12	5	17
13	Harford Memorial Hospital	Jul-12	Jul-12	Jul-12	Aug-12	5	17
14	Holy Cross Hospital	Sep-10	Sep-10	Sep-10	Dec-11	5	17
15	Howard County General Hospital	Feb-12	Nov-11	Nov-11	Mar-12	5	17
16	Johns Hopkins Bayview Medical Center	40	Feb-12	Jul-12	Apr-12	5	17
17	Johns Hopkins Hospital	40	Dec-11	May-12	Jul-12	5	17
18	Laurel Regional Hospital	40	40	Jul-12	40	5	17
19	MedStar Franklin Square Medical Center	Oct-11	Oct-11	Nov-12	Jul-12	Apr-13	Jan-14
20	MedStar Good Samaritan Hospital	Oct-11	Oct-11	Nov-12	Jun-12	Apr-13	17
21	MedStar Harbor Hospital	Oct-11	Sep-12	Nov-12	Mar-12	Apr-13	Aug-12
22	MedStar Montgomery Medical Center	Mar-13	Apr-11	Apr-11	Feb-12	Apr-13	17
23	MedStar Southern Maryland Hospital Center	27	Jul-11	Nov-11	Feb-13	5	17
24	MedStar St. Mary's Hospital	Jun-12	Mar-12	Dec-12	Jun-13	5	17
25	MedStar Union Memorial Hospital	Oct-10	Oct-10	Nov-12	May-12	Apr-13	17
26	Mercy Medical Center	40	Nov-12	40	Aug-12	5	17
27	Meritus Medical Center	Jul-12	Jul-12	Jul-12	Sep-12	5	17
28	Northwest Hospital Center	Dec-11	Dec-11	Aug-12	Sep-12	5	17
29	Peninsula Regional Medical Center	40	40	40	40	5	17
30	Prince George's Hospital Center	40	40	Jul-12	Apr-13	5	17
31	Shady Grove Adventist Hospital	Nov-11	Dec-10	Dec-11	Dec-11	5	Sep-13
32	Sinai Hospital	Dec-11	Dec-11	Aug-12	Sep-12	5	17
33	St. Agnes Hospital	Feb-12	Feb-12	Feb-12	Dec-12	5	17
34	Suburban Hospital	Oct-10	Oct-10	Oct-10	Sep-11	5	17
35	Union Hospital Cecil County	Aug-11	Sep-11	Sep-11	Sep-12	5	17
36	University of Maryland Charles Regional Medical Center	40	40	40	Jan-13	5	17
37	University of Maryland Medical Center	40	Jan-14	Jul-12	Jul-12	5	17
38	University of Maryland Medical Center Midtown Campus	40	Apr-13	Apr-13	Feb-13	5	17
39	University of Maryland Rehabilitation & Orthopedic Institute	40	40	Jul-12	Apr-12	5	17
40	University of Maryland Shore Medical Center at Chestertown	40	40	40	Mar-13	5	17
41	University of Maryland Shore Medical Center at Dorchester	40	40	40	40	5	17
42	University of Maryland Shore Medical Center at Easton	40	40	40	40	5	17
43	University of Maryland St. Joseph Medical Center	May-12	May-12	40	May-12	5	Aug-12
44	University of Maryland Upper Chesapeake Health	Jul-12	Jul-12	Jul-12	Aug-12	5	17
45	Washington Adventist Hospital	Nov-11	Dec-10	Dec-10	Apr-11	5	17
46	Western Maryland Health System	Mar-11	Mar-11	Feb-12	Jan-12	5	17

Key	Total Number of Hospitals in Current Status			Total Number of Hospitals Using Services		
	Laboratory Reports	Radiology Reports	Transcribed Documents	Portal	Portal - SSO	ENS
Not Live (months in current status)	14	9	11	6	41	40
Data Quality Assurance & Monitoring (months in current status) <i>Hospitals standardizing and mapping data for transmission</i>	1	0	1	N/A	N/A	N/A
Live <i>The number of hospitals that have successfully completed the above listed activities and the date the hospital went live</i>	31	37	33	40	5	6
No plans to provide data feed	0	0	1	N/A	N/A	N/A

\*Note: Pilot for Single Sign On to Portal launched in April 2013 and offered to all hospitals starting in September 2013

## CRISP Portal & ENS Adoption by Facility

Count	Organization	Type	Portal Participation Agreement*	Training*	Portal Live*	ENS Live*
1	Accokeek Drug and Health Care Inc.	Pharmacy**		Nov-13	Nov-13	
2	Advanced Diagnostic Radiology	Radiology	Mar-12			
3	Advanced Internal Medicine	Ambulatory	Jan-13	Jan-13	Jan-13	
4	Advanced Radiology	Radiology	Sep-10	Mar-12	Mar-12	
5	AGHS Berlin Primary Care	Ambulatory	Aug-11	Jun-13	Jun-13	
6	AGHS Townsend Medical Center	Ambulatory	Mar-12			
7	Airpark Primary Care	Ambulatory	Nov-13	Dec-13	Dec-13	
8	All Day Medical Care Clinic	Ambulatory	Aug-13	Sep-13	Sep-13	
9	All Walks of Life	Mental Health	Sep-13			
10	Allegany Health Nursing and Rehabilitation	Ambulatory	Mar-12			
11	Allegheny Surgical Associates	Ambulatory	Sep-11			
12	Alliance Inc.	Mental Health	Sep-13			
13	Alternative Primary Care	Ambulatory	May-12			
14	Ambulatory Care Pharmacy - Medical Center	Pharmacy		Nov-13	Nov-13	
15	American Health Associates Laboratory	Laboratory	Sep-13			
16	American Radiology	Radiology	Sep-10			
17	Amerigroup	Payor	Nov-12			Feb-13
18	Annapolis Center for Integrative Medicine	Ambulatory	Sep-13			
19	Annapolis Internal Medicine	Ambulatory	Jul-13	Dec-13	Dec-13	
20	Annapolis Neurology Associates	Ambulatory	Nov-13	Nov-13	Dec-13	
21	Annapolis Primary Care	Ambulatory	Sep-13	Aug-13		
22	Anne Arundel Medical Center	Hospital	Sep-11	Jul-12	Jul-12	Sep-13
23	Anne Arundel Cancer Registry	Ambulatory				Jun-13
24	Anne Arundel HealthCare Enterprises, Inc.	Ambulatory	Sep-11	Jun-13	Jun-13	
25	Waugh Chapel Family Medicine	Ambulatory		Jul-13	Sep-13	
26	South River Family Medicine	Ambulatory		Jun-13	Jul-13	
27	Anne Arundel Physician Group	Ambulatory	Jul-13			
28	Anne Arundel Urology	Ambulatory	Apr-13	Mar-13	Apr-13	
29	Anthony & Banerjee MD PA	Ambulatory	Feb-13	Feb-13		
30	Apple Discount Drugs	Ambulatory	Aug-12	Oct-12	Oct-12	
31	Arcola Health and Rehab Center	Long Term Care	Dec-12	Mar-12		
32	Arthritis & Rheumatism Associates	Ambulatory	Feb-12	Mar-12	Mar-12	
33	Arundel Lodge	Mental Health	Aug-13	Nov-13	Nov-13	Nov-13
34	Associates in Cardiology	Ambulatory	Aug-11	Dec-11	Sep-13	
35	Atlantic General Hospital	Hospital	Aug-11	Mar-12	Mar-12	
36	Baltimore Medical System, Inc.	FQHC	Oct-13	Oct-13	Oct-13	Nov-13
37	Baltimore Nuerosurgery and Spine Center	Ambulatory	Oct-11			
38	Baltimore Washington Medical Center	Hospital	Aug-11	Mar-12	Mar-12	
39	Bay Crossing Family Medicine	Ambulatory	Apr-13	May-13	May-13	Jun-13
40	Bay Hundred Medical Center	FQHC	Dec-13	Dec-13	Dec-13	
41	Bayside Family Practice	Ambulatory	Nov-13			Dec-13
42	Bayview Care Center (JHU)	Ambulatory	Aug-11	Apr-12	Apr-12	
43	Bethesda Medical Associates	Ambulatory	Jun-11	Dec-11	Jan-12	
44	BH Health Services	Ambulatory	Apr-13	Dec-13	Jan-14	
45	BioReference Laboratories	Laboratory	Mar-13			
46	Bon Secours Baltimore Health System	Hospital	Jan-12	Jan-13	Jan-13	
47	Bowie Health Center	Ambulatory	Jul-13	Aug-13	Jul-13	
48	Bowie Internal Medicine	Ambulatory	May-12	May-12	May-12	
49	Braddock Oncology Associates	Ambulatory	Apr-13	Jan-13	Apr-13	
50	Bravo	Payor	Dec-12			Dec-12
51	Bravo Health Advanced Care Center	Ambulatory	Feb-13			
52	Bread for the City	FQHC	Oct-13			
53	Broadmead Medical Services	Ambulatory	Apr-12			
54	Calvert County Nursing Center	Long Term Care	Feb-12			
55	Calvert Internal Medicine Group	Ambulatory	Mar-12	Jul-12	Jul-12	Oct-12
56	Calvert Manor Healthcare Inc.	Long Term Care	Jun-12	Jul-12	Jul-12	
57	Calvert Memorial Hospital	Hospital	Aug-11	Feb-13	Feb-13	
58	Cambridge Pediatrics	Ambulatory	Feb-12	Mar-12	Mar-12	Jun-13

## CRISP Portal & ENS Adoption by Facility

Count	Organization	Type	Portal Participation Agreement*	Training*	Portal Live*	ENS Live*
59	Cancer Care Center of Frederick	Ambulatory	Mar-11	Mar-11	Mar-11	
60	Capital Primary Care	Ambulatory	Apr-13	Jan-14	Jan-14	
61	Cardiovascular Specialists of Central MD	Ambulatory	Aug-11	Nov-11		
62	Carefirst	Payor	Jul-13			Nov-13
63	Care Connection Inc.	Ambulatory	Jul-13	Aug-13		
64	Caroline Nursing & Rehab Center	Long Term Care	Jan-12			
65	Caroll Health Group	Ambulatory	Aug-11	Jan-13	Jan-13	
66	Carroll Hospital Center	Hospital	Aug-11	Jul-12	Jul-12	
67	The Casey Health Institute	Ambulatory	Nov-13	Jan-14	Jan-14	
68	Catholic Charities Child & Family Services	Mental Health	Sep-13			
69	Cecil County Health Department	Government Agency	Dec-12			
70	Center for Sleep and Wake Disorders	Ambulatory	Jan-11			
71	Centreville Family Medicine	Ambulatory	Sep-11	Aug-13		
72	Centennial Medical Group	Ambulatory	May-13	Jun-13	Jun-13	Jun-13
73	Central Maryland Urology Associates	Ambulatory	Nov-12			
74	Channel Marker Inc.	Mental Health	Nov-13			Jan-14
75	Chapel View Family Care	Ambulatory	Apr-13	Jul-13	Aug-13	
76	Charlotte Hall Veterans Home	Long Term Care	Nov-12	Nov-12	Nov-12	
77	Charter Internal Medicine, LLC	Ambulatory	Mar-13	Mar-13	Mar-13	
78	Chase Brexton Health Services	Ambulatory	Apr-13	Jun-13	Jul-13	Jun-13
79	CBHS - Columbia	Ambulatory		Aug-13	Oct-13	
80	CBHS - Easton	Ambulatory		Jul-13	Jul-13	
81	CBHS - Mt. Vernon Center	Ambulatory		Sep-13	Oct-13	
82	CBHS - Randallstown	Ambulatory		Jun-13	Jul-13	
83	Chesapeake Otolaryngology Associates	Ambulatory	Jul-13	Aug-13	Sep-13	
84	Chesapeake Potomac Regional Cancer Center	Ambulatory	Mar-12	Jul-12	Jul-12	
85	Children's Medical Group	Ambulatory	May-12	Jul-12	Jul-12	
86	Choptank Community Health Services, Inc.	FQHC	Dec-13	Nov-13	Dec-13	
87	Citizens Care & Rehabilitation Center	Long Term Care	May-13			
88	Clinical Associates	Ambulatory	May-13	Jun-13	Jul-13	Jan-14
89	Collingswood Nursing and Rehabilitation Center	Long Term Care	Jul-13	Jan-14	Jan-14	
90	Columbia Medical Practice	Ambulatory	Feb-13	Sep-13	Sep-13	Apr-13
91	Community Clinics Inc.	Ambulatory	Apr-13	Jul-12		Dec-13
92	Community Family Medicine	Ambulatory	Apr-11			
93	Community of Hope, Inc.	FQHC	Oct-13			Dec-13
94	Community Radiology Associates	Ambulatory	Sep-10	Dec-11	Dec-11	
95	Comprehensive Primary Care	Ambulatory	Aug-12	Jun-12	Nov-12	Nov-13
96	Comprehensive Women's Health	Ambulatory	Aug-12	Jul-12	Jul-12	
97	Contact Lens Associates	Ambulatory	Jun-13	Jun-13	Sep-13	
98	Crossroads Medical Associates	Ambulatory	Jan-14			
99	Cyriac and Mundra MD PA	Ambulatory	Nov-13			
100	Dawn A. Broderick, M.D.	Ambulatory	Oct-13			
101	Deepak Seth, MD	Ambulatory	Jun-13			
102	Denton Medical Center	FQHC	Dec-13	Dec-13	Dec-13	
103	Desai Medical Center	Ambulatory	Aug-13			
104	Desai & Holmes	Ambulatory	Feb-13	Feb-13	Feb-13	
105	Devlin Manor	Long Term Care	Mar-11			
106	DHMH - Office of Health Services	Government Agency	Dec-12			
107	Digestive Disease Associates	Ambulatory	Dec-11	Dec-12		
108	Dobin & Heck Internal Medicine	Ambulatory	Apr-12	Jul-12	Jul-12	
109	Doctors Community Hospital	Hospital	Oct-11	Apr-13	Apr-13	Jun-13
110	Doctors Regional Cancer Center	Ambulatory	Jan-13	Sep-12	Sep-12	
111	Donald Bousel, MD	Ambulatory	Oct-12			
112	Downtown Baltimore Family Care	Ambulatory	Oct-13	Feb-13	Oct-13	
113	Dr. David A Schwartz, MD	Ambulatory	Jan-13	Jan-13	Jan-13	
114	Dr. Jhansi R. Ganesan, MD	Ambulatory	Apr-13	Jan-14	Jan-14	
115	Dr. Peter Uggowitz, MD	Ambulatory	Oct-12			
116	Dr. Robin Bissell	Ambulatory	Sep-13	Oct-13	Oct-13	

## CRISP Portal & ENS Adoption by Facility

Count	Organization	Type	Portal Participation Agreement*	Training*	Portal Live*	ENS Live*
117	Dr. Vinu Ganti	Ambulatory	Jun-13	Sep-13	Oct-13	
118	Dragos Popescu, MD	Ambulatory	Dec-12	Dec-12	Dec-12	
119	Drs. Gehris, Jordan, Day and Associates, LLC	Ambulatory	Oct-12	Oct-12	Oct-12	
120	Drs. Schreiber and Kelsey	Ambulatory	May-13			
121	Drs. Shanahan and Ferguson	Ambulatory	May-13	Jun-13		
122	Dundalk Pediatrics Associates, P.A.	Ambulatory	Apr-13	Apr-13	Apr-13	
123	Dynamic Mobile Imaging	Radiology Center	Jan-14			
124	Eastern Avenue Health Solutions	Mental Health	Nov-13	Dec-13		
125	Eastern Shore Pediatrics LLC	Ambulatory	May-13	Oct-13	Oct-13	
126	Eastern Shore Primary Care	Ambulatory	Dec-13	Jan-14	Jan-14	
127	Edge Medical Care PC	Ambulatory	Jun-13	Sep-13	Sep-13	
128	Edward McCready Memorial Hospital	Hospital	Aug-11			
129	Egle Nursing & Rehabilitation Center	Long Term Care	May-13	Jul-13	Jul-13	Jun-13
130	Ellicott City Pediatric Associates	Ambulatory	Aug-13	Aug-13	Oct-13	
131	Emmitburg Osteopathic Primary Care	Ambulatory	Feb-11	Nov-11	Nov-11	
132	Endoscopic Microsurgery Associates	Ambulatory	Oct-13			
133	Erickson Living	Long Term Care	Sep-11	Mar-12		
134	Evergreen Health Care	Ambulatory	Nov-13	Dec-13	Dec-13	
135	Fairwood Spine and Pain Center	Ambulatory	Jun-13			
136	Falls Medical Specialists	Ambulatory	Sep-13	Sep-13	Oct-13	
137	Family & Medical Counseling Services	Mental Health	Nov-13			
138	Family Care of Easton	Ambulatory	May-12	Jul-12	Jul-12	
139	Family Health Care of Germantown	Ambulatory	Jul-11	Nov-11	Nov-11	Mar-13
140	Family Health Center	Ambulatory	Nov-11	Nov-11	Nov-11	Sep-13
141	Family Health Centers of Baltimore	FQHC	Oct-13			
142	Family Services	Ambulatory	Jun-12	Jun-12	Jun-12	
143	Farragut Internal Medicine	Ambulatory	Nov-11	Nov-11	Nov-11	
144	Fassett Magee Health Center	FQHC	Dec-13	Dec-13	Dec-13	
145	Fast Track Urgent Care	Ambulatory	Nov-12	Oct-13	Oct-13	
146	Federalsburg Medical Center	FQHC	Dec-13	Dec-13	Dec-13	
147	Five Star Physician Services, LLC	Ambulatory	May-13	Aug-13	Sep-13	
148	Forest Haven Nursing Home	Long Term Care	Sep-13	Oct-13	Oct-13	
149	Fort Washington Medical Center	Hospital	Sep-11	Aug-12	Sep-12	
150	Frederick Gastroenterology Assocaites	Ambulatory	Jul-13	Jul-13	Aug-13	
151	Frederick Memorial Hospital	Hospital	Jun-11	Jul-12	Jul-12	
152	Frederick Primary Care Associates	Ambulatory	Sep-13	Jan-14	Jan-14	Nov-13
153	Garrett County Memorial Hospital	Hospital	Apr-11			
154	Garrett Medical Group, P.A.	Ambulatory	Jun-12			
155	Garrett Surgical Group	Ambulatory	Aug-12			
156	Genesis Healthcare	Long Term Care	Oct-13	Dec-13	Dec-13	
157	Genesis Cromwell Facility	Long Term Care				
158	Genesis Franklin Woods	Long Term Care				
159	Genesis Heritage Center	Long Term Care				
160	Gerald Family Care	Ambulatory	Sep-11	Apr-13	Apr-13	Jan-13
161	Go-Getters	Mental Health	Aug-13	Aug-13	Sep-13	Nov-13
162	Goldsboro Medical Center	FQHC	Dec-13	Dec-13	Dec-13	
163	Greater Baltimore Medical Center	Hospital	Jan-10	Jun-12	Jun-12	
164	Greater Baltimore Medical Associates	Ambulatory	Jun-12	Nov-12	Nov-12	Aug-12
165	Green Spring Internal Medicine	Ambulatory	Feb-12	Feb-12	Feb-12	Apr-13
166	GS Surgical Services, LLC	Ambulatory	Jul-12	Mar-13	Apr-13	
167	Gul G. Chablani, M.D.	Ambulatory	Jan-14			
168	Harford-Belair Community Mental Health	Mental Health	Sep-13			
169	Harford Memorial Hospital	Hospital	Nov-11	Aug-12	Aug-12	
170	Health Care for the Homeless MD	Ambulatory	May-13	May-13	Oct-13	
171	Healthy Steps	Ambulatory	Aug-11	Jan-12	Jan-12	
172	Hebrew Home of Greater Washington	Long Term Care	Feb-12	Apr-12	May-12	
173	Holy Cross - Aspen Hill Health Center	Ambulatory	Sep-10	Jul-12	Aug-12	
174	Holy Cross - Silver Spring Health Center	Ambulatory	Nov-11	Nov-12	Nov-12	

## CRISP Portal & ENS Adoption by Facility

Count	Organization	Type	Portal Participation Agreement*	Training*	Portal Live*	ENS Live*
175	Holy Cross Employee Health	Ambulatory	Oct-11	Jan-09	Jan-09	
176	Holy Cross Health Center	Ambulatory	Sep-10	Nov-11	Nov-11	
177	Holy Cross Hospital	Hospital	Sep-10	Dec-11	Dec-11	
178	Hope Health Systems	Ambulatory	Nov-12	Oct-13	Oct-13	
179	Howard County General Hospital	Hospital	Aug-11	Mar-12	Mar-12	
180	Humanim	Ambulatory	Jul-13	Sep-13	Sep-13	Aug-13
181	Ingleside at King's Farm	Long Term Care	May-13	Jun-13	Jun-13	Jun-13
182	Institutes for Behavior Resources	Mental Health	Sep-13	Sep-13	Sep-13	
183	Irina A. Skopets, MD, PA	Ambulatory	Sep-13	Sep-13	Oct-13	
184	Janjua Neurology	Ambulatory	Feb-13	Jan-13	Feb-13	
185	Jarrettsville Family Care	Ambulatory	Sep-12	Sep-12	Sep-12	
186	JHCP Annapolis***	Ambulatory	Apr-12	Aug-12	Aug-12	
	JHCP Bowie	Ambulatory		Aug-12	Aug-12	
	JHCP Canton Crossing	Ambulatory		Jun-12	Jun-12	Sep-12
	JHCP Charles County	Ambulatory		Aug-12	Sep-12	
	JHCP Cranberry Station	Ambulatory				
	JHCP Downtown Bethesda	Ambulatory		Jul-12	Jul-12	
	JHCP East Baltimore	Ambulatory		Aug-12	Aug-12	
	JHCP Frederick	Ambulatory		Aug-12	Aug-12	
	JHCP Fulton	Ambulatory		Jun-13	Jul-13	
	JHCP Germantown	Ambulatory		Jul-13	Jul-13	
	JHCP Glen Burnie	Ambulatory		Aug-12	Sep-12	
	JHCP Greater Dundalk	Ambulatory		Jul-12	Aug-12	
	JHCP Green Spring	Ambulatory		Aug-12	Aug-12	
	JHCP Hager Park Health Center	Ambulatory				
	JHCP Hagerstown	Ambulatory		May-12	May-12	Sep-12
	JHCP Heart Care	Ambulatory		Oct-13	Oct-13	
	JHCP Howard County	Ambulatory		Aug-12	Aug-12	
	JHCP Kent Island	Ambulatory		Sep-12	Sep-12	
	JHCP Laurel	Ambulatory		Aug-12	Aug-12	
	JHCP Laurel Health Center	Ambulatory				
	JHCP Monocacy Valley Health Center	Ambulatory				
	JHCP Montgomery Grove	Ambulatory		May-12	May-12	Sep-12
	JHCP North Bethesda	Ambulatory		Jul-12	Jul-12	
	JHCP OBGYN at Columbia	Ambulatory				
	JHCP Odenton	Ambulatory		Aug-12	Aug-12	
	JHCP Riverside	Ambulatory				
JHCP Rockville	Ambulatory	Jul-12	Jul-12			
JHCP Sibley Medical	Ambulatory					
JHCP Water's Edge	Ambulatory	Jun-12	Jun-12	Sep-12		
JHCP Westminster	Ambulatory	Aug-12	Sep-12			
JHCP White Marsh	Ambulatory	Aug-12	Aug-12			
JHCP Wyman Park	Ambulatory	Jul-12	Jul-12	Sep-12		
187	Johns Hopkins Bayview Medical Center	Hospital	Aug-11	Apr-12	Apr-12	
188	Johns Hopkins Healthcare Priority Partners	Payor	Nov-12			Jan-13
189	Johns Hopkins Hospital	Hospital		Jul-12	Jul-12	
190	JCHIP Commnity	Payor	Aug-11	Oct-13	Oct-13	Jul-13
191	JCHIP KnownCAD	Payor				
192	Johnston Family Medicine	Ambulatory	May-13			
193	John M. Lee MD PA	Ambulatory	Oct-13	Oct-13	Nov-13	
194	Kingdom Medicine P.A.	Ambulatory	Mar-13	Mar-13	Mar-13	
195	La Clinica del Pueblo	FQHC	Dec-13			
196	Labcorp	Laboratory	Sep-10			
197	Laurel Medical Associates	Ambulatory	Jul-13			
198	Laurel Regional Hospital	Hospital	Jul-11	Jul-13	Sep-13	
199	Leisure World Medical Center	Long Term Care	Jul-11	Nov-11	Dec-11	
200	Lifebridge Courtland Gardens	Long Term Care	Oct-10			
201	Lifebridge Levindale	Long Term Care	Oct-10			

## CRISP Portal & ENS Adoption by Facility

Count	Organization	Type	Portal Participation Agreement*	Training*	Portal Live*	ENS Live*
202	Lifebridge Health - Sinai Ambulatory Practice	Ambulatory	Oct-12			Jun-13
203	Lois A. Narr, D.O.	Ambulatory	Sep-13	Sep-13		
204	Long View Nursing Home	Long Term Care	Mar-12	Apr-12		
205	Lorien Bel Air	Long Term Care	Jan-12	May-12	May-12	
206	Lorien Columbia	Long Term Care	Jan-12			
207	Lorien Encore at Turf Valley	Long Term Care	Jan-12			
208	Lorien Mays Chapel	Long Term Care	Jan-12			
209	Lorien Mt. Airy	Long Term Care	Jan-12			
210	Lorien Riverside	Long Term Care	Jan-12			
211	Lorien Taneytown	Long Term Care	Jan-12			
212	Man Alive Inc. Lane Treatment Center	Mental Health	Sep-13	Dec-13	Dec-13	
213	Manchester Medical Group, LLC	Ambulatory	Mar-13	Mar-13	Mar-13	
214	Manoj Mathur, M.D.	Ambulatory	Dec-11			
215	Maple Shade Youth & Family Services	Mental Health	Oct-13			
216	Marie A. Dobyns, MD, PA	Ambulatory	Jul-13	Jul-13	Sep-13	Aug-13
217	Mary's Center	FQHC	Dec-13			
218	Maryland Department of Health and Mental Hygiene	Government Agency	Dec-12			
219	Maryland Department of Public Safety and Correctional Services	Government Agency	Dec-12			
220	Maryland Kidney Group	Ambulatory	Sep-12	Jul-13	Jul-13	
221	Maryland Oncology and Hematology	Ambulatory	Jan-13	Jan-13	Jan-13	
222	Maryland Open MRI	Radiology	Nov-12			
223	Maryland Primary Care Physicians	Ambulatory	Apr-13	Apr-13	Apr-13	
224	MPCP Columbia	Ambulatory		Feb-13	Sep-13	Nov-13
225	MD Laser Medicine & Surgery	Ambulatory	Aug-13			
226	Medpeds	Ambulatory	May-12	Jul-12	Jul-12	Dec-12
227	MedStar Family Choice	FQHC	Aug-13			Dec-13
228	MedStar Franklin Square Medical Center	Hospital	Jun-11	Jul-12	Jul-12	Jan-14
229	MedStar Good Samaritan Hospital	Hospital	Jun-11	Jun-12	Jun-12	
230	MedStar Harbor Hospital	Hospital	Jun-11	Mar-12	Mar-12	Aug-12
231	MedStar Montgomery Medical Center	Hospital	Jun-11	Dec-11	Feb-12	
232	Medstar National Rehabilitation Network	Hospital	Jun-11	Mar-13	Mar-13	
233	MedStar Southern Maryland Hospital Center	Hospital	Dec-10	Feb-13	Feb-13	
234	MedStar St. Mary's Hospital	Hospital	Jun-11	May-13	Jun-13	
235	MedStar Union Memorial Hospital	Hospital	Jun-11	May-12	May-12	
236	Mercy Medical Center	Hospital	Sep-11	Aug-12	Aug-12	
237	Meritus Medical Center	Hospital	Nov-11	Sep-12	Sep-12	
238	Metro Infectious Disease Control	Ambulatory	Aug-12			
239	Mian Family Medicine	Ambulatory	Mar-11	Dec-11	Dec-11	
240	Michael Randolph, MD, PC	Ambulatory	Oct-12	Oct-13	Oct-13	
241	Mid-Atlantic - Delaware	Ambulatory	Mar-12			
242	Mid-Atlantic Allegheny Health Nursing & Rehab Center	Long Term Care	Mar-12			
243	Mid-Atlantic Berlin Nursing & Rehab Center	Long Term Care	May-13	Aug-13	Sep-13	Sep-13
244	Mid-Atlantic Chapel Hill Nursing & Rehab Center	Long Term Care	Mar-12			
245	Mid-Atlantic Fairfield Nursing & Rehab Center	Long Term Care	Mar-12			
246	Mid-Atlantic Nephrology Associates	Ambulatory	Sep-13	Sep-13	Oct-13	
247	Mid-Atlantic Oakland Nursing & Rehab Center	Long Term Care	Mar-12			
248	Mid-Atlantic Pain Medicine Center	Ambulatory	Aug-13	Sep-13	Sep-13	
249	Mid-Atlantic Villa Rosa Nursing Home	Long Term Care	Mar-12			
250	Middletown Valley Family Medicine, P.A.	Ambulatory	Oct-13	Oct-13	Oct-13	
251	Mitchell Gittelman, DO,PA	Ambulatory	Dec-13	Jan-14	Jan-14	
252	Mody & Miller MD PA	Ambulatory	Jan-13			
253	Montgomery Medical Associates, P.C.	Ambulatory	May-13	Jun-13	Nov-13	Nov-13
254	Montgomery Recovery Services	Ambulatory	Sep-13	Oct-13	Oct-13	Nov-13
255	Mosaic Community Services	Ambulatory	Jan-13	Jan-13	Jan-13	Dec-13
256	Mountain Laurel Medical Center	Ambulatory	Apr-12	Jun-12	Jun-12	
257	Mt. Washington Pediatric	Hospital	Jun-11			
258	N.B. Vellanki, MD	Ambulatory	Apr-13		Jan-14	
259	Natural Family Wellness	Ambulatory	May-12	Apr-12	Apr-12	Dec-13

## CRISP Portal & ENS Adoption by Facility

Count	Organization	Type	Portal Participation Agreement*	Training*	Portal Live*	ENS Live*
260	Neil Lattin M.D. LLC	Ambulatory	Aug-12	Aug-12	Aug-12	
261	Nephrology Associates PA	Ambulatory	Mar-13			
262	Nephrology Center of Maryland	Ambulatory	Jan-12			
263	Northwest Hospital Center	Hospital	Oct-10	Sep-12	Sep-12	
264	NMS Healthcare Facilities	Long Term Care	May-13	May-13	May-13	Jul-13
265	NMS Healthcare Annapolis	Long Term Care		May-13	Jan-14	
266	NMS Healthcare Hagerstown	Long Term Care		May-13	May-13	
267	NMS Healthcare Hyattsville	Long Term Care		May-13	May-13	
268	Omni Medical Center	Ambulatory	Nov-12	Oct-12		
269	Optimum Health Systems Inc.	Mental Health	Dec-13	Dec-13	Dec-13	
270	OrthoBethesda	Ambulatory	Feb-13			
271	Owensville Primary Care, Inc	Ambulatory	Sep-13	Aug-13	Sep-13	
272	Patricia M. Sullivan, MD	Ambulatory	Jan-14			
273	Paul T. Barbera MD, PA	Ambulatory	Jan-14	Jan-14		
274	Pediatric & Adolescent Care of Silver Spring	Ambulatory	Dec-13			
275	Peninsula Health Group	Ambulatory		Aug-13		
276	Peninsula Regional Medical Center	Hospital	Nov-11	May-13	Sep-13	
277	Park Medical Associates	Ambulatory	Dec-13	Dec-13	Jan-14	
278	People's Community Health Centers	Ambulatory	Jan-13	Feb-13	Feb-13	Aug-13
279	People Encouraging People, Inc.	Ambulatory	Apr-13	Jul-13	Jul-13	Jul-13
280	Phillip Konits MD LLC	Ambulatory	Jan-14	Apr-13	Jan-14	
281	Physicians House Calls	Long Term Care	Sep-13	Sep-13	Sep-13	Dec-13
282	Piccard Surgery Center, LLC	Ambulatory	Nov-13	May-13	May-13	
283	Poolesville Family Practice	Ambulatory	Mar-12	Jul-12	Jul-12	
284	Potomac Obstetrics and Gynecology	Ambulatory	Mar-13	Mar-13	Mar-13	
285	Potomac Physician Associates	Ambulatory	Jun-11	Dec-11	Dec-11	Oct-12
286	Potomac Physicians PA	Ambulatory	Oct-12	Oct-12	Oct-12	Mar-13
287	Potomac Valley Nursing & Wellness Ctr	Long Term Care	Jun-12	Jun-12	Jun-12	
288	Prafull Patel, MD, LLC	Ambulatory	Oct-13	Nov-13	Nov-13	
289	Pregnancy Aid Center	Ambulatory	Apr-13	Apr-13	Jun-13	
290	Primary and Alternative Med	Ambulatory	Oct-11			
291	Primary Care Coalition of Montgomery County	Ambulatory	Nov-11	Jun-12	Jun-12	
292	Prince George's County Health Department	Government Agency	May-13			
293	Prince George's Hospital Center	Hospital	Jul-11	Apr-13	Apr-13	
294	Progressive Radiology	Radiology	Dec-11	May-12	May-12	
295	Prologue Inc.	Mental Health	Aug-13	Aug-13	Sep-13	
296	Proto MED	Ambulatory	Sep-12			
297	Proyecto Salud Clinic	Ambulatory	May-13	Jun-13	Nov-13	
298	Psychotherapeutic Services	Mental Health	Aug-13	Aug-13		Nov-13
299	Quest Diagnostics	Laboratory	Sep-10			
300	Radiation Physics	Radiology	Nov-12	Aug-13		
301	RadNet	Radiology	Sep-10	Nov-11	Mar-12	
302	REACH Health Services	Ambulatory	Sep-13	Sep-13	Sep-13	
303	Rheumatology Associates of Baltimore	Ambulatory	Jun-13	Oct-13	Oct-13	Aug-13
304	Righttime	Ambulatory	Mar-11	Nov-11		
305	Riverside MCO	Payor	May-13			Jun-13
306	Robustiano J. Barrera Jr. MD, PA	Ambulatory	Aug-12	Aug-12	Aug-12	
307	Rockville Geriatrics and Palliative Medicine	Ambulatory	Mar-12	Jan-09	Jan-09	
308	Rockville Internal Medicine Group	Ambulatory	Jul-11	Dec-11	Jul-12	
309	Sante Group	Mental Health	Nov-13			
310	Scaria Mathew, MD	Ambulatory	Feb-13	Feb-13	Feb-13	
311	Scott Mauer, MD	Ambulatory	Jul-11			
312	Season's Hospice	Long Term Care	Jun-12	Jul-12	Jul-12	
313	Seidenberg Protzko Eye Associates	Ambulatory	Oct-12	Oct-12	Oct-12	
314	Sellers Family Medicine	Ambulatory	Jul-11			
315	Shady Grove Adventist Hospital	Hospital	Nov-10	Dec-11	Dec-11	Sep-13
316	Shady Grove Adventist Radiation Oncology Center	Ambulatory	Mar-12			
317	Shady Grove Radiology	Radiology	Feb-12	Dec-12	Dec-12	

## CRISP Portal & ENS Adoption by Facility

Count	Organization	Type	Portal Participation Agreement*	Training*	Portal Live*	ENS Live*	
318	Shah Associates	Ambulatory	Dec-13				
319	Sharon M. Messics, MD	Ambulatory	Feb-13			May-13	
320	Shepherd's Clinic	Ambulatory	Jul-11	Nov-11	Nov-11		
321	Sheppard Pratt Physician's P.A.	Mental Health	Dec-13				
322	Sinai Hospital	Hospital	Oct-10	Aug-12	Sep-12		
323	Smaldore Family Practice	Ambulatory	Apr-13	Aug-13	Jan-14		
324	Sood Family Medicine	Ambulatory	Mar-12	Sep-13	Sep-13		
325	St. Agnes Hospital	Hospital	Oct-11	Dec-12	Dec-12		
326	Seton Medical Group	Ambulatory		May-13	May-13	Jun-13	
327	St. Luke's House and Threshold Services United	Long Term Care	Jul-12	Sep-12	Sep-12		
328	Steven Lacher MD PA	Ambulatory	Aug-13	Aug-13	Sep-13		
329	Stone Run Family Medicine	Ambulatory	Jun-12	Jun-12	Jun-12	Oct-12	
330	Suburban Hospital	Hospital	Oct-10	Sep-11	Sep-11		
331	Susquehanna Obstetrics Gynecology & Nurse Midwifery	Ambulatory	Aug-12				
332	Tansinda Medical Associates	Ambulatory	Oct-12				
333	The Center for Breast Health	Ambulatory	Sep-13	Aug-13	Oct-13		
334	The Coordinating Center	Ambulatory	Jul-13			Nov-13	
335	The Kahan Center For Pain Management	Ambulatory	Sep-13	Jan-14	Jan-14		
336	The Lions Center for Rehabilitation and Extended Care	Long Term Care	May-13	Jun-13	Jul-13	Jun-13	
337	The Pediatric Group	Ambulatory	Mar-12	Jul-12	Jul-12	Apr-13	
338	The Primary Care Group of Maryland	Ambulatory	Apr-13	Apr-13	Apr-13		
339	Therapeutic Living For Families	Mental Health	Aug-13	Aug-13	Oct-13	Jan-14	
340	Thomas E. Maslen, MD	Ambulatory	Feb-13				
341	Total Family Care	Ambulatory	Aug-13				
342	Total Healthcare	FQHC	May-13	Jul-13	Jul-13	Nov-13	
343	THC- Division Street	FQHC		Jun-13	Jun-13		
344	THC-Kirk Avenue	FQHC		Jul-13	Jul-13		
345	THC- Linden Pediatrics	FQHC		Jul-13	Oct-13		
346	THC- Men's Health	FQHC		Nov-13	Nov-13		
347	THC- Mondawmin	FQHC		May-13	Jul-13		
348	THC - Saratoga	FQHC		Nov-13	Nov-13		
349	THC- True Health	FQHC		Jul-13	Oct-13		
350	THC- Westside	FQHC		Jul-13	Nov-13		
351	Trusted Health Plan	Payor		Oct-13			Jan-14
352	Ulmer Family Medicine	Ambulatory	Feb-12	May-12	May-12	Oct-12	
353	Union Hospital of Cecil County	Hospital	Feb-11	Sep-12	Sep-12		
354	Union Primary Care Elkton	Ambulatory	Apr-13	Apr-13			
355	United Health Care	Payor	Sep-13			Nov-13	
356	University of Maryland Charles Regional Medical Center	Hospital	Aug-11	Jan-13	Jan-13		
357	University of Maryland Medical Center	Hospital	Aug-11	Jul-12	Jul-12		
358	Pediatrics at the Harbor	Ambulatory					Jul-13
359	University Care Heritage Crossing	Ambulatory		May-12	May-13	Aug-13	
360	University Care of Edmondson Villiage	Ambulatory		Jun-13	Jun-13	Aug-13	
361	University Care of Shipley's Choice	Ambulatory		May-12	Jul-13	Aug-13	
362	University Family Medicine Faculty Physicians	Ambulatory		Apr-13	Apr-13	Mar-13	
363	University of Maryland Cardiology Physicians	Ambulatory		Apr-13	Mar-13	Apr-13	
364	University of Maryland Medical Center Midtown Campus	Hospital		Aug-11	Feb-13	Feb-13	
365	University of Maryland Rehabilitation & Orthopedic Institute	Hospital	Aug-11				
366	University of Maryland Shore Medical Center at Chestertown	Hospital	Aug-11	Mar-13	Mar-13		
367	University of Maryland Shore Medical Center at Dorchester	Hospital	Aug-11				
368	University of Maryland Shore Medical Center at Easton	Hospital	Aug-11	Mar-13	Oct-13		
369	University of MD St. Joseph Medical Center	Hospital	Oct-11	Mar-12	May-12	Aug-12	
370	Upper Bay Counseling & Support Services	Mental Health	Aug-13	Oct-13	Oct-13	Dec-13	
371	University of Maryland Upper Chesapeake Health	Hospital	Nov-11	Aug-12	Aug-12		
372	Vanessa Allend MD	Ambulatory	May-12	Apr-12	Apr-12		
373	Vesta, Inc.	Mental Health	Nov-13				
374	Village at Rockville	Long Term Care	Jun-11	Nov-11	Nov-11		
375	Virgo-Carter Pediatrics	Ambulatory	Jun-12				

## CRISP Portal & ENS Adoption by Facility

Count	Organization	Type	Portal Participation Agreement*	Training*	Portal Live*	ENS Live*
376	Vishal Datta, M.D., P.A.	Ambulatory	May-13	May-13	Sep-13	
377	Washington Adventist Hospital	Hospital	Nov-10	Apr-12	Apr-11	
378	Washington Open MRI	Radiology	Nov-12			
379	Washington Radiology	Radiology	Oct-13			
380	Way Station, Inc.	Ambulatory	Mar-13			Apr-13
381	Wellspring Family Medicine	Ambulatory	Jun-12			
382	Western Maryland Health System	Hospital	Jan-11	Dec-11	Jan-12	
383	Western Maryland Recovery Services	Mental Health	Oct-13	Oct-13	Oct-13	
384	Wexford Health Sources	Ambulatory	Dec-12	Apr-13	Apr-13	
385	Whitman-Walker Health	Ambulatory	Nov-13			
386	Wicomico County Health Department	Government Agency	Jan-13	Apr-13	Apr-13	
387	Willie M. Yu MD PC	Ambulatory	Dec-13			
388	Womens Health Specialists	Ambulatory	Jul-12	Aug-12	Aug-12	
389	Your Docs In	Ambulatory	Dec-13			
390	Zenith Medical Care, LLC	Ambulatory	Jul-13			
<b>Total</b>			<b>356</b>	<b>289</b>	<b>270</b>	<b>79</b>

**Key Terms and Notes:**

**CRISP Portal:** The CRISP Portal is a standalone system available via the Internet that provides patient health information from Maryland hospitals and other providers who are connected to the HIE. Currently, select information is available via the portal, including patient demographics, laboratory results, radiology reports, discharge summaries, operative and consult notes, and medication fill history

**Encounter Notification System (ENS):** A system that notifies providers when one of their patients has an encounter at a Maryland hospital, which includes patient admission, discharge, and transfer activity

**ENS Live:** The number of organizations receiving ENS alerts

**Green Shading Indicates Completed:** Practices that have completed the category are shaded green with the month indication of completion

**Participation Agreement:** Providers sign a participation agreement with CRISP in order to query the CRISP Portal

**Patient Education:** Education materials are provided to practices to hand out to patients regarding the CRISP Portal before a practice may begin using the Portal

**Portal Live:** An organization has completed the credentialing, legal, and training process and has at least one user approved to use the Portal

**Portal Training:** CRISP provides training to clinical providers in order for participants to learn how to access clinical information in real-time. Training includes information about accessing the Portal and patient education. Training is the first person trained at the facility

\* Although most providers/practices follow a sequence (provider agreement, training, usage), some practices completed the steps in a different order; metrics in chart represent a snapshot of CRISP data available at the end of each month, certain dates may fluctuate from month to month

\*\*Pharmacies are exempt from signing CRISP Participation Agreement

\*\*\*JHCP Participation Agreement date is merged because there is one Agreement for all JHCP sites

## CRISP Other Projects

#	Project Name	Project Description
1	Regional Extension Center Operations	Provides support to 1,000 small practices to achieve meaningful use by providing direct technical assistance through Management Services Organizations
2	Direct Secure Messaging	Provides the ability for an individual clinician or organization to send or receive Secure Email, to support a variety of clinical purposes
3	State Innovation Model (SIM) Reporting and Mapping	Partnering with the Department of Health and Mental Hygiene (DHMH) on the development of hospital encounter reporting and mapping capabilities to support the community integrated medical home model
4	Health Enterprise Zone (HEZ) Dash-boarding and Mapping	Leveraging the capabilities developed under the SIM grant, to offer dash-boarding and technical assistance for the HEZ program
5	Prescription Drug Monitoring Program (PDMP)	The PDMP makes records of the prescribing and dispensing of controlled dangerous substances available in the CRISP query portal, in an effort to stem the rise of prescription drug abuse and diversion. The PDMP project went live in mid-December.
6	Health Benefit Exchange (HBE) - Provider Information Management	CRISP is obtaining provider information from the Qualified Health Plans participating in Maryland's HBE and partnering with Optum to produce a verified provider demographics source so that consumers of the HBE can search for health insurance plans by provider name
7	HBE - All Payer Claims Database Unique Identifier	Relying on the Initiate Master Patient Index, CRISP is attaching a unique patient identifier to carrier eligibility files sent to MHCC to enable insights into member churn between commercial Qualified Health Plans and Medicaid
8	HBE - Care Summary	In its early stage, this project would allow a new enrollee in a health plan to choose to send prior clinical records to care coordinators affiliated with their new health plan, such that proactive services may be provided in advance of a new billing history building up
9	Public Health - Electronic Lab Reporting	To support reporting for the public health meaningful use measure, CRISP is sending a copy of electronic reportable labs to the State via Health Level Seven (HL7), providing assistance with the formatting of the lab messages as necessary
10	Public Health - Immunization Reporting	Hospitals will send Immunization messages via HL7 to CRISP which will pass them along to the State to a Secure File Transfer Protocol (SFTP) location
11	Public Health - Syndromic Surveillance	CRISP will send a copy of existing discharge (A04) and update (A08) messages to DHMH via HL7 to an SFTP location, providing assistance with the formatting of the admission, discharge, and transfer (ADT) messages as necessary
12	Department of Public Safety and Correctional Services Query	Providing access to the CRISP Query portal for Department of Corrections and users at the locked ward at Bon Secours Hospital
13	Challenge Grant	Providing financial support to three independent nursing homes so they can invest in health IT. Each grantee is also using the encounter notification service (ENS) to improve transitions of care with hospitals
14	Single Sign On	Implementing additional HIE capabilities to Medicaid providers, such as single sign on to the HIE
15	DC Hospital Integration	Working with DC Department of Health Care Finance (DHCF) to support DC acute care hospital connectivity with the CRISP HIE infrastructure
16	Medicaid Outreach DHMH	Partnered with DHMH for outreach to eligible professionals and hospitals in regards to the Medicaid Meaningful Use Incentives Program in Maryland