

Options for Rural Health Care Delivery in Maryland

Maryland Health Care Commission Meeting
January 16, 2020

The Walsh Center 
for Rural Health Analysis

NORC AT THE UNIVERSITY OF CHICAGO

NORC Walsh Center for Rural Health Analysis



at the UNIVERSITY of CHICAGO

NORC at the University of Chicago is an objective and non-partisan research institution that delivers reliable data and rigorous analysis to guide critical programmatic, business, and policy decisions.

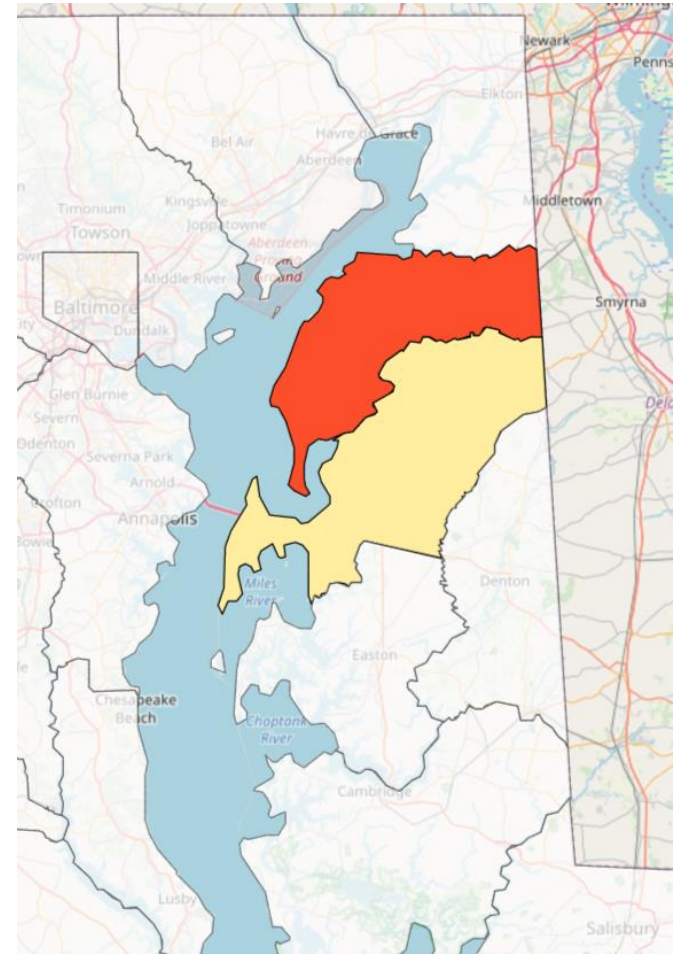
The Walsh Center
for Rural Health Analysis

NORC AT THE UNIVERSITY OF CHICAGO

NORC's Walsh Center for Rural Health Analysis, established in 1996, conducts timely policy analysis, research, and evaluation that address the needs of policy makers, the health care workforce, and the public on issues that affect health care and public health in rural America. The Walsh Center is based in Bethesda, MD.

Purpose

- Identify delivery system options that could meet the health care needs of residents in Kent and upper Queen Anne's Counties
- Models are applicable and scalable to other rural communities in Maryland and consistent with the Total Cost of Care (TCOC) Model



Options for Rural Health Service Delivery

Key Features	Status Quo: Acute General Hospital	Maryland Rural Hospital
Number of Beds	Determined by MHCC	Determined by MHCC (No more than 25 beds)
Average Length of Stay	None	96 hours or less
24/7 ED	Yes	Yes
Inpatient Care	Yes	Yes, Limited
Outpatient Services	Yes	Yes
Radiology/Laboratory	Yes	Yes
Telehealth	Yes	Yes, Enhanced
Interfacility Transfers	Yes	Yes, Enhanced
Accreditation	Joint Commission Hospital	Joint Commission Critical Access Hospital
Payment	Global Budget	Global Budget
Advisory Board	No	Yes

Aging and Wellness Center of Excellence

Inpatient

Outpatient

Primary
Care

Telehealth

Patient
Education

Multidisciplinary
Care Team

Care
Coordination

Age-Friendly Health System

Considerations for Next Steps

Enhance
Community
Engagement

Create
Opportunities to
Improve Health
Literacy

Consider
Implementing
Mobile Integrated
Health (MIH)
Programs

Address Adequacy
of Volunteer EMS

Establish Non-
emergency
Transportation

Optimize Rural
Workforce Training

Leverage
Technology

Engage with Peers
Nationwide

Leverage Additional
Funding Sources

Alana Knudson, PhD

Co-Director, Walsh Center for Rural Health Analysis

Knudson-Alana@norc.org

(301) 634-9326

Thank You!

The Walsh Center 
for Rural Health Analysis

NORC AT THE UNIVERSITY OF CHICAGO

walshcenter.norc.org



@WalshCenter