



MHCC Commission Presentation: Onpoint Introduction & Progress Report

February 24, 2022

About Onpoint

- Independent nonprofit
- Based in Portland, ME
- Frontrunner in APCD development and support
- Team with deep technical expertise
- Expert in provider coding/billing, claims adjudication, data exchange standards
- Innovator in claims-based analytics

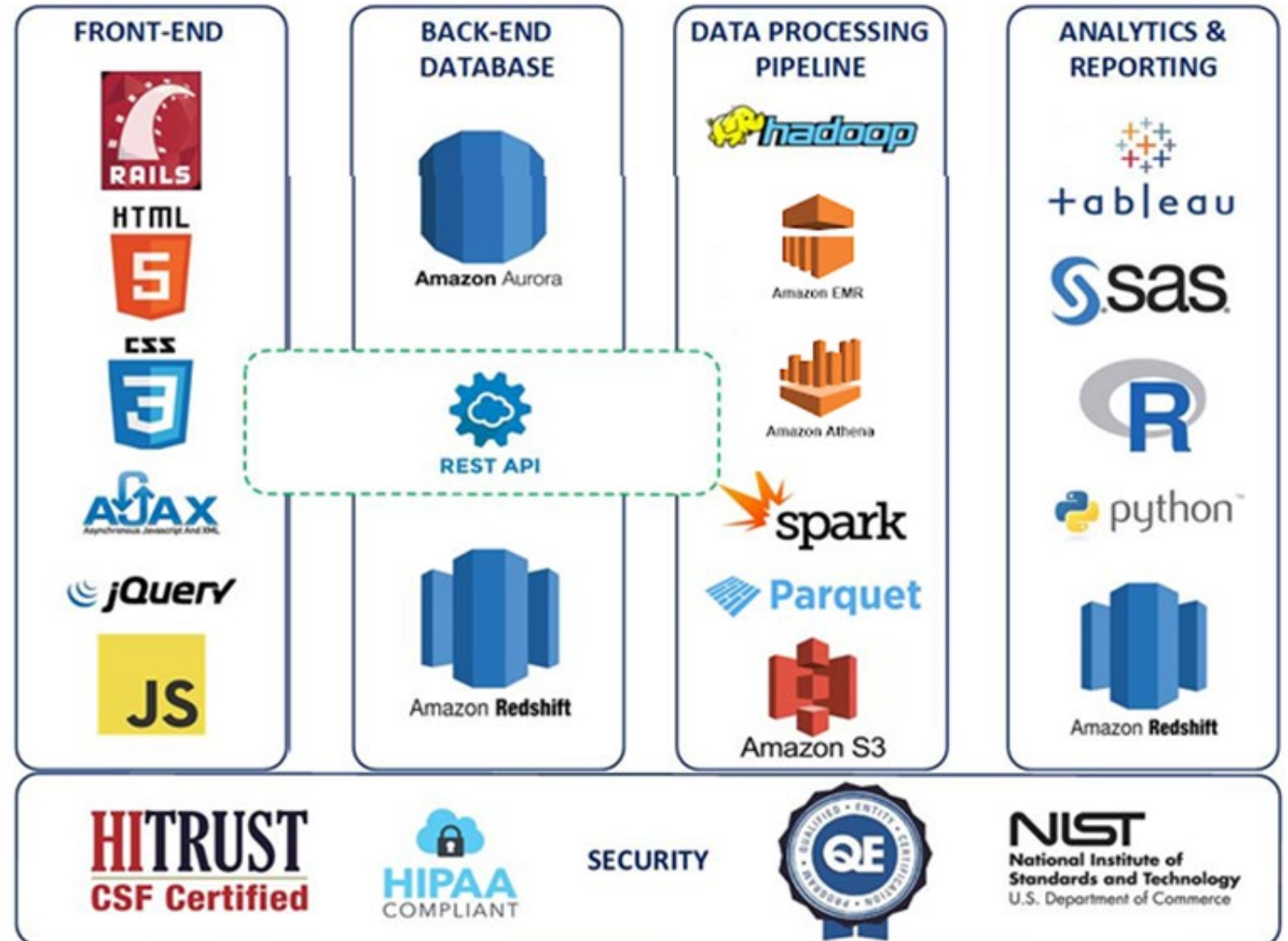


Supporting APCD Clients in 11 States + CMS

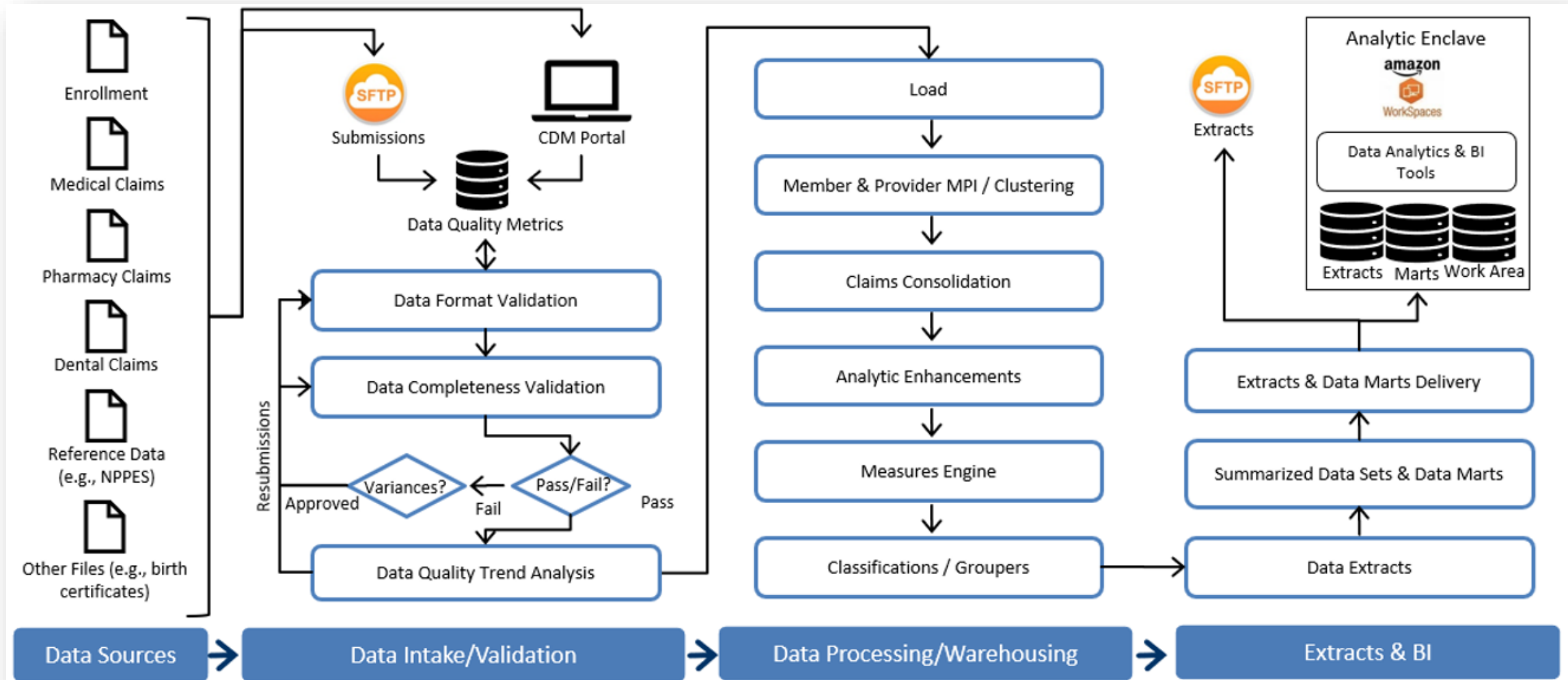


APCD Platform Built to Scale

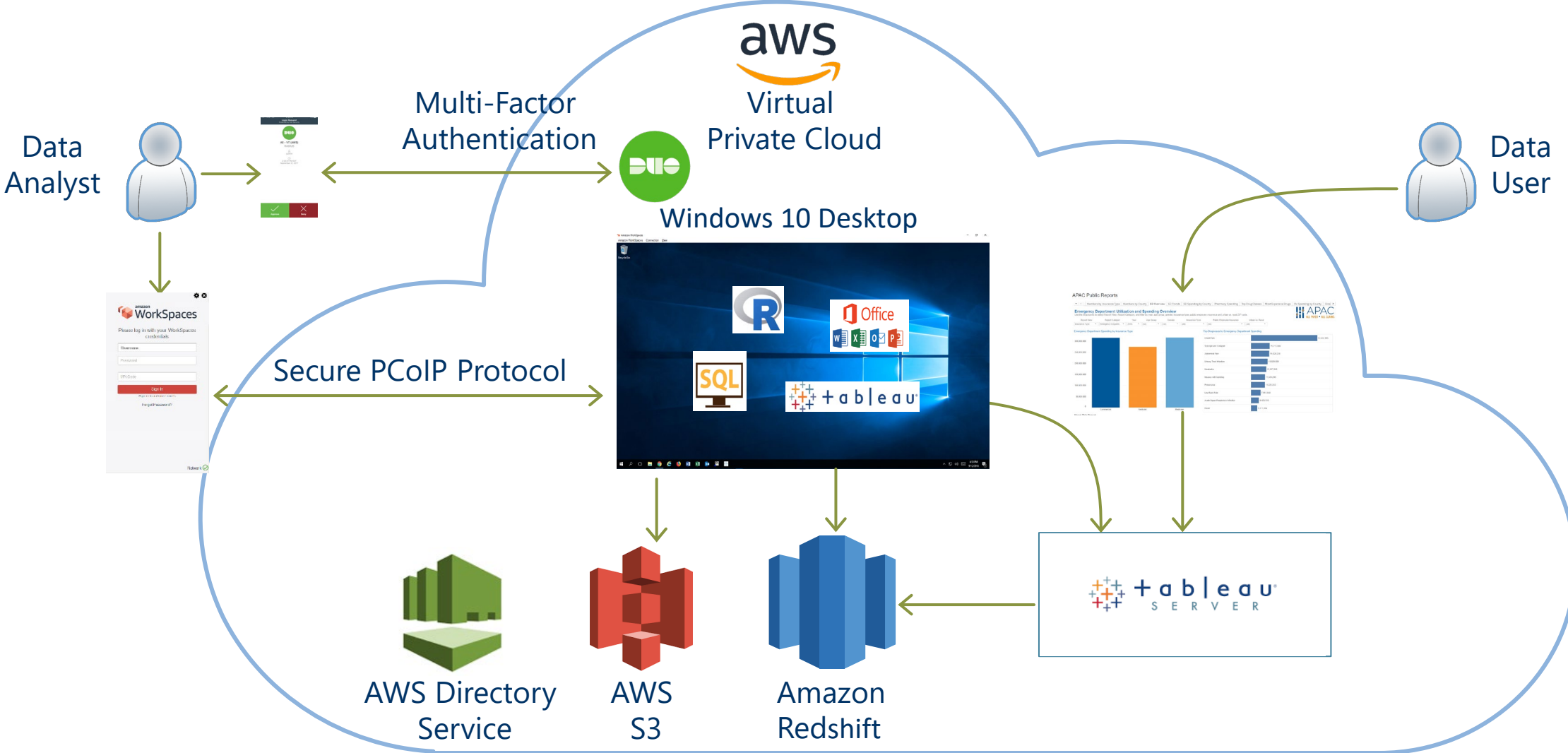
- Recent example of CA Kaiser files processed in July
- Average size: 17M rows
- >700 validations
- Processing time: ~14 mins.



Data Integration, Validation, & Enhancement Processes



Onpoint's Analytic Enclave Environment



Self-Service Business Intelligence Solution

- Quarterly updates
- Highly performant data structure
- Pre-aggregated data marts across 5 domains
- Dynamic reporting with filtering, drilldown, array of data visualizations

Analytic Enclave



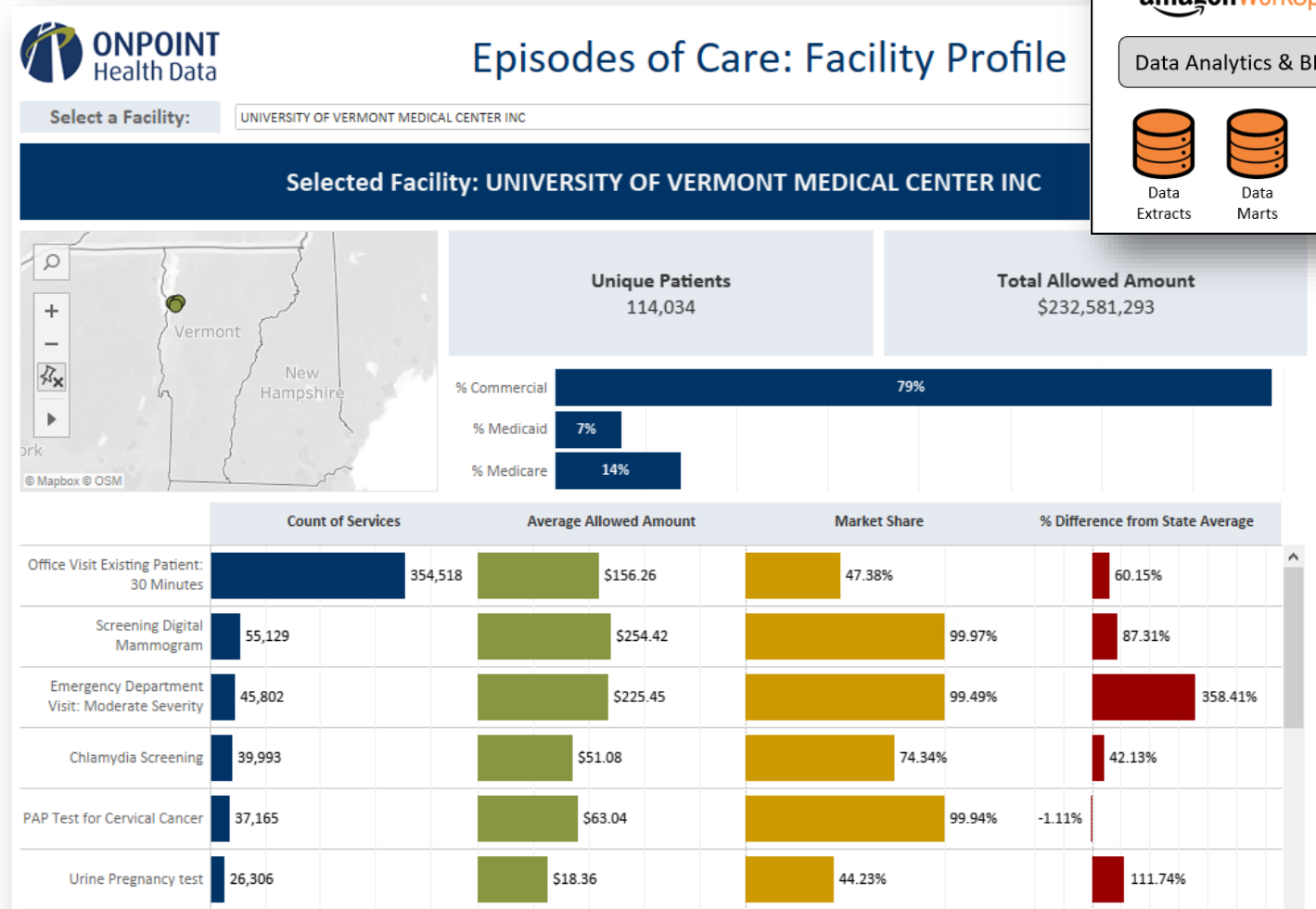
amazon WorkSpaces

Data Analytics & BI Tools





Data Extracts Data Marts Work Area



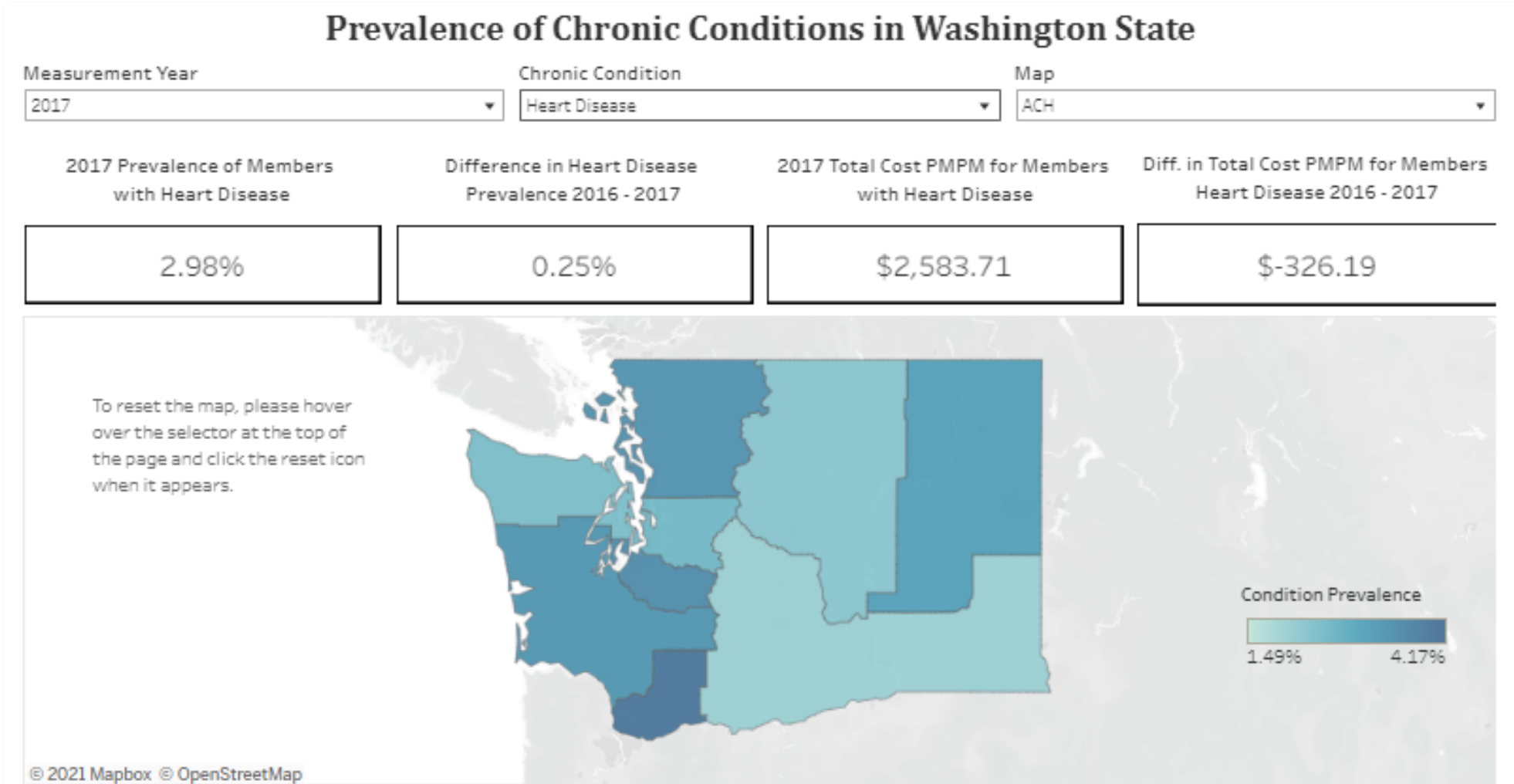
Implementation Progress Report

Milestone	Completed
Contract execution	10/2021
Transition-in plan and schedule	11/2021
APCD platform, Onpoint CDM, configuration	12/2021
Data Submission Guide release	12/2021
Submitter onboarding and registration (34 payers, 68 submitters)	12/2021
Analytic Enclave launch	1/2022
APCD platform open for payer submissions (21 submitters as of 2/15/22)	1/2022
Project management plan	1/2022
Wear the Cost Website transition, testing, launch	2/2022
Historical data transitioned from SSS	2/2022

How Onpoint Will Help Maryland

- Seamless transition to new technology platform
- Hands-on submitter support
- Robust set of analytic enhancements (consolidation, identity resolution, analytic flags, groupers, provider attribution, performance measures, etc.)
- Transparency in business rules
- More rapid cycle times
- Cloud-hosted Analytic Enclave (contemporary tools, scalability, security)
- BI solution for self-service reporting
- Reporting enhancements (Privately Insured Report, other)
- Flexibility in data products (configurable reporting periods, runout)

APCD Analytics: Prevalence Rates (WA)



APCD Analytics: Inpatient / ED Utilization (VT)

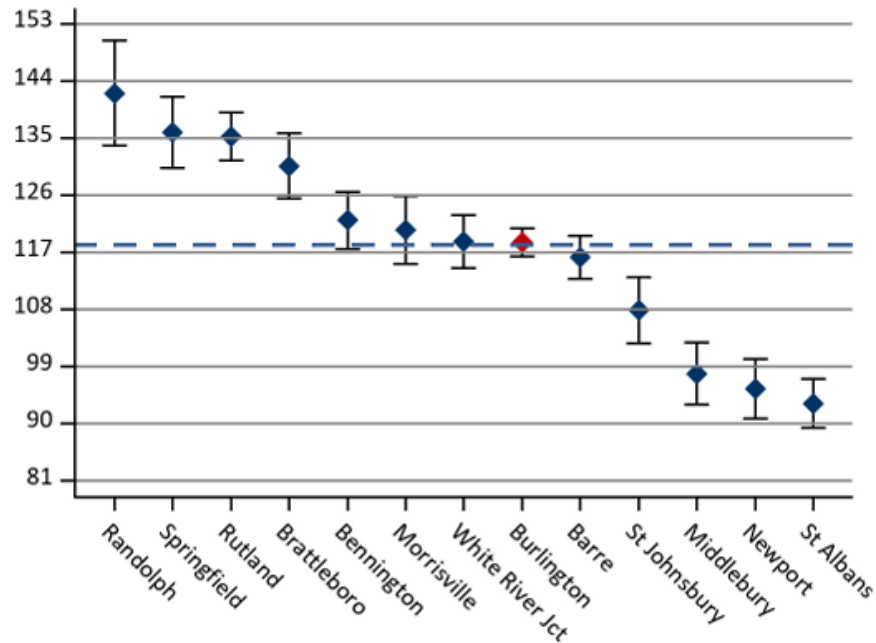


Smart choices. Powerful tools.

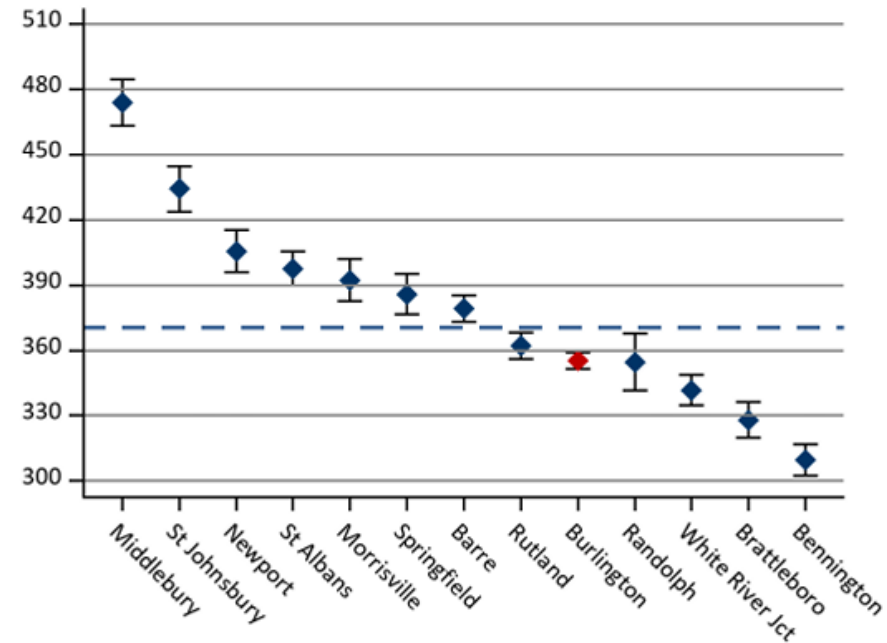
Community Profile: Burlington

Period: Jan. 2018 - Dec. 2018 Profile Type: Adults (18+ Years)

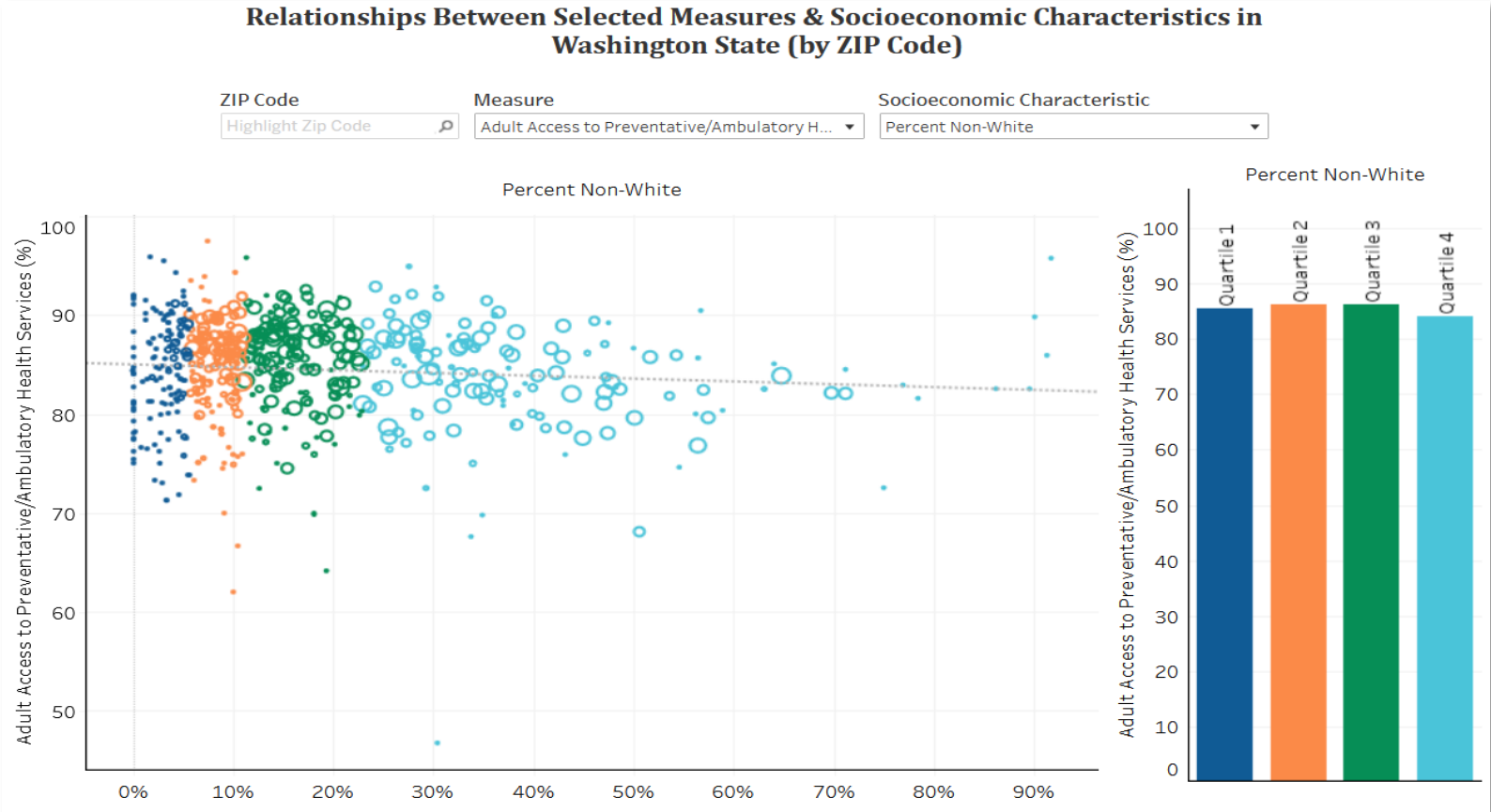
Inpatient Discharges



Outpatient ED Visits

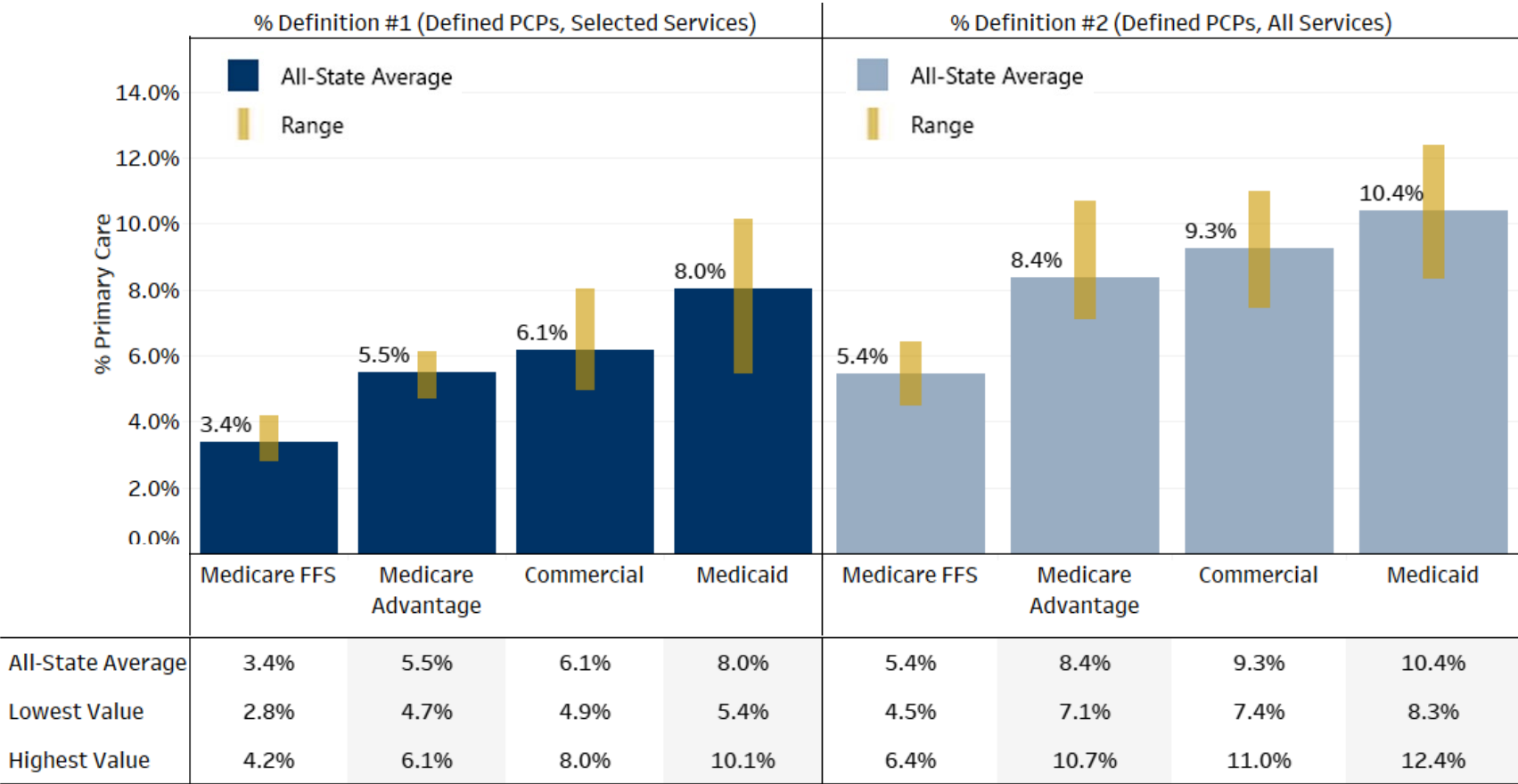


APCD Analytics: Linking Claims & Social Determinants Data (WA)



APCD Analytics: Primary Care Spending Analysis (NESCSO)

Primary Care % of Total Medical Payments by Payer Type, 2018





Reliable data. Informed decisions. Strategic advantage.

75 Washington Avenue
Suite 1E
Portland, ME 04101

207 623-2555

www.OnpointHealthData.org