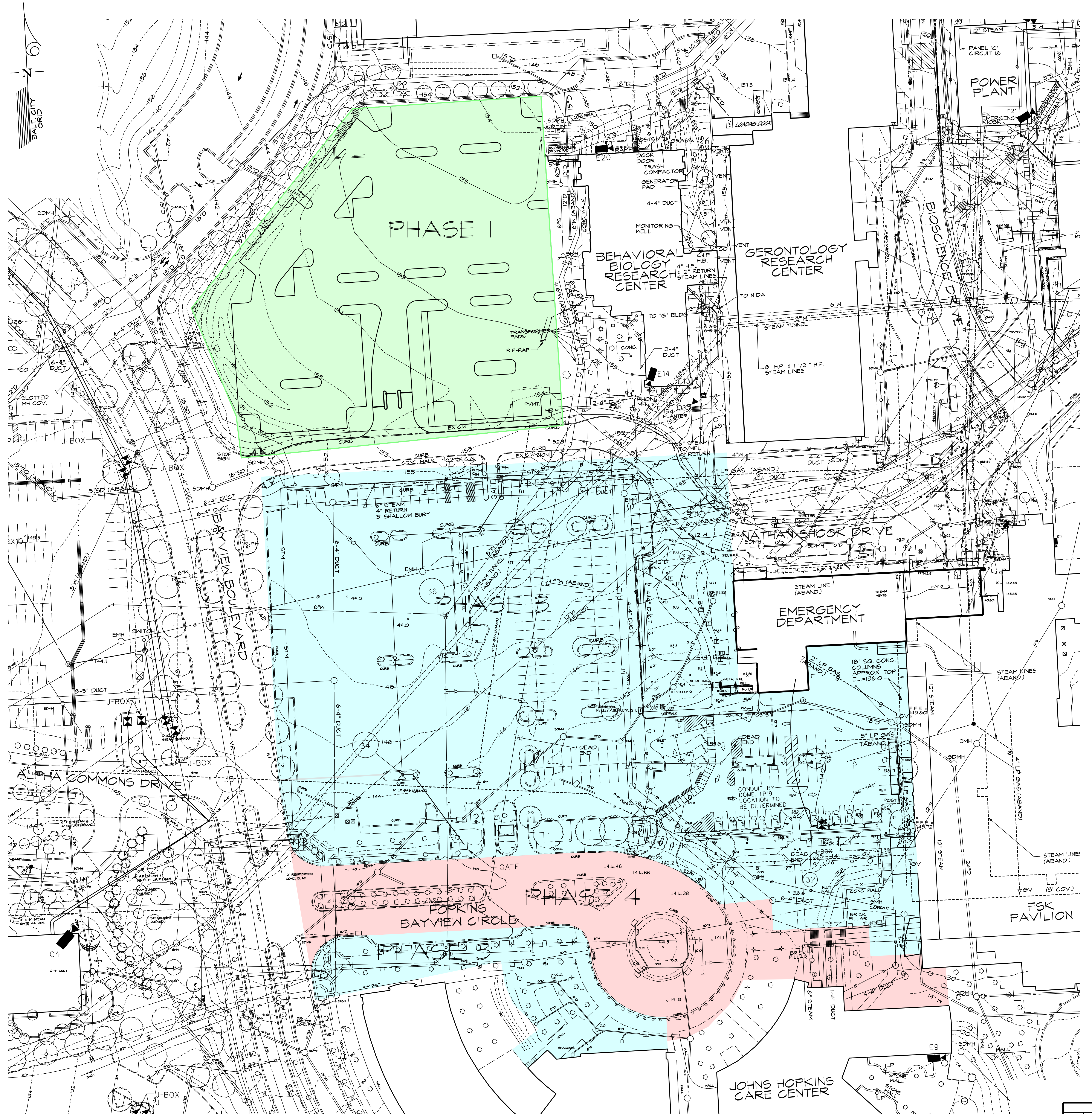


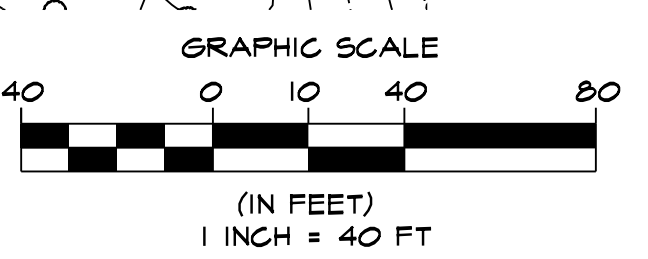
VICINITY MAP
SCALE: 1"=1000'



LEGEND

- EX. CURB AND GUTTER
- VR — EX. VERIZON DUCT BANK
- G — EX. GAS
- E — EX. UNDERGROUND ELECTRIC
- STM — EX. STEAM LINE
- EX. 18" D — EX. STORM DRAIN
- EX. 8" SAN — EX. SANITARY SEWER
- 8" W — EX. WATER
- EX. TELE-TECTOR
- EX. WATER VALVE
- EX. FIRE HYDRANT
- O — EX. MANHOLE
- O — EX. CLEANOUT
- EX. SIGN
- X LP — EX. LIGHT POLE
- PROPOSED BUILDING FOOTPRINT
- PHASE 1 LIMIT - PROPOSED 'LOT C' SURFACE PARKING LOT
- PHASE 2 LIMIT - UTILITY RELOCATION WITHIN PROPOSED BUILDING FOOTPRINT
- PHASE 3 LIMIT - PROPOSED PARKING GARAGE & BUILDING
- PHASE 4 LIMIT - HOPKINS BAYVIEW CIRCLE IMPROVEMENTS

OVERALL PHASING PLAN
SCALE: 1"=40'



REVISIONS			
NO.	DATE	DESCRIPTION	BY

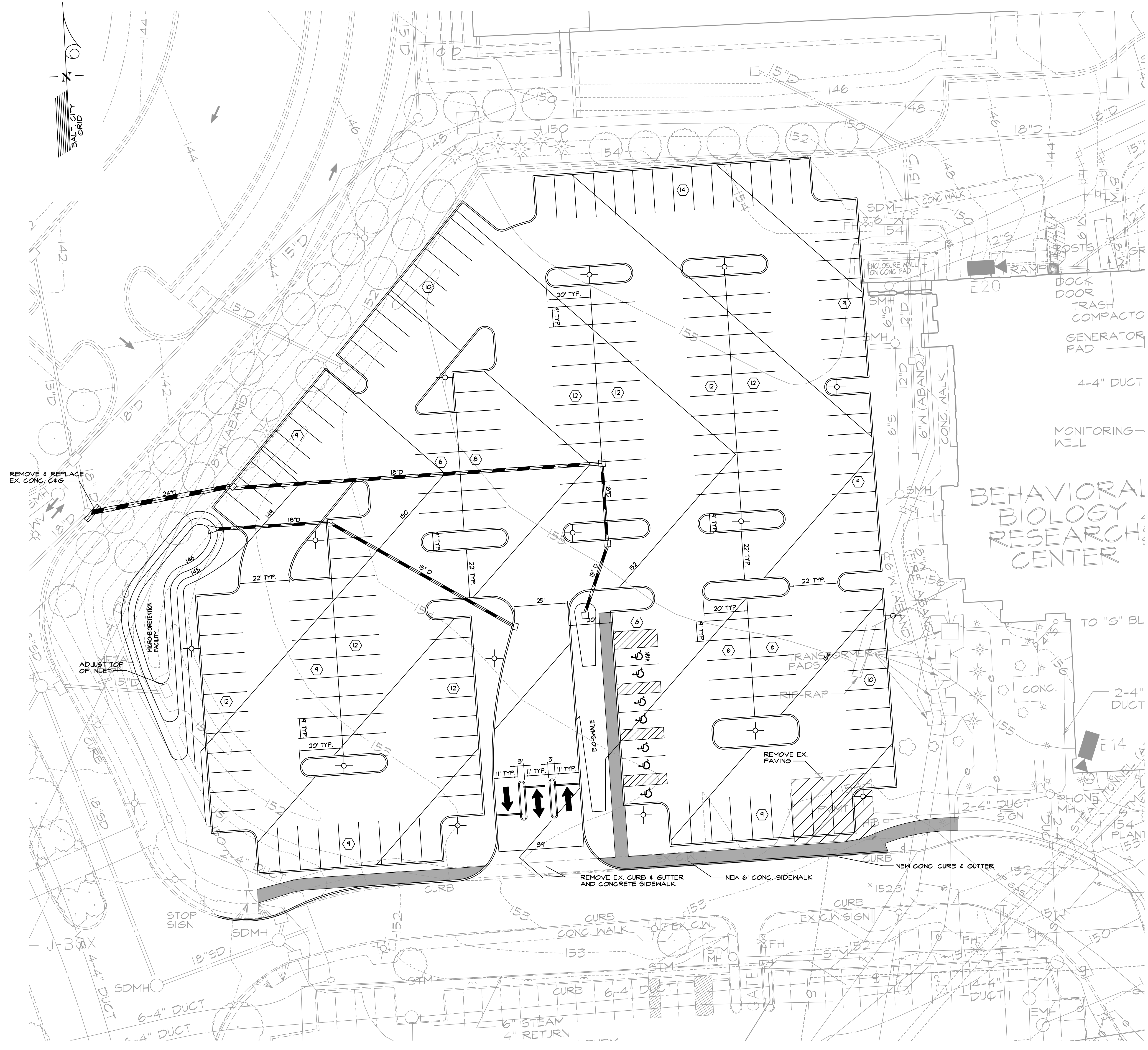
OVERALL PHASING PLAN
FOR
NEW INPATIENT BUILDING
AT
JOHNS HOPKINS BAYVIEW MEDICAL CENTER
WARD 26 SECTION 17 BLOCK 6332 LOT 17

mk
Consulting Engineers, LLC
Whitehall MD
3300 Clipper Mill Road, Suite 201
Baltimore, MD 21211
Phone: 607-304-183

DATE: 5/2/17
SCALE: 1"=40'
DESIGNED BY: SM
DRAWN BY: SG

DRAWING NO.: C-1
SHEET 1 OF 5
1700B

PLOTTED: 5/2/2017
 BY: EEC
 FILE: C:\Users\skh\OneDrive\Company Files\Projects\2017\1700B - JHHS - New Patient Tower\Drawings\Phasing Exhibits\C-1 OVERALL PHASING PLAN.dwg



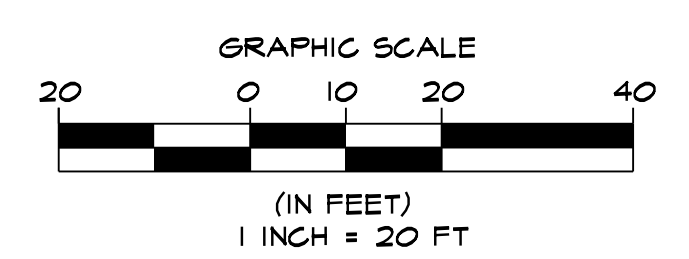
LEGEND

- EX. CURB AND GUTTER
- VR- EX. VERIZON DUCT BANK
- G- EX. GAS
- E- EX. UNDERGROUND ELECTRIC
- STM- EX. STEAM LINE
- EX. 18" SD- EX. STORM DRAIN
- EX. 8" SAN- EX. SANITARY SEWER
- 2"W- EX. WATER
- EX. TELE-TECTOR
- II- EX. WATER VALVE
- FH- EX. FIRE HYDRANT
- O- EX. MANHOLE
- CO- EX. CLEANOUT
- E- EX. SIGN
- XLP- EX. LIGHT POLE
- + PROPOSED LIGHT POLE
- - - PROPOSED STORM DRAIN
- - - PROPOSED CURB & GUTTER
- █ PROPOSED CONC. SIDEWALK

SCOPE OF WORK:

- CONSTRUCT NEW 206 PARKING SPACE SURFACE PARKING LOT WITH:
- (2) TWO MICRO-BIORETENTION FACILITIES WITH STORM DRAINAGE
 - NEW PARKING LOT LIGHTING
 - (3) THREE CONTROL GATES W/ ELECTRICAL & COMMUNICATION CONDUIT INFRASTRUCTURE
 - NEW CONCRETE SIDEWALK AND CURB & GUTTER

PHASE I PLAN
SCALE: 1"=20'



REVISIONS			
NO.	DATE	DESCRIPTION	BY

PHASE I PLAN
FOR
NEW INPATIENT BUILDING
AT
JOHNS HOPKINS BAYVIEW MEDICAL CENTER
WARD 26 SECTION 17 BLOCK 6332 LOT 17

mk
Consulting Engineers, LLC
Whitell Hill
3300 Clipper Mill Road, Suite 201
Baltimore, MD 21211
Phone: 507-3046183

DATE: 3/2/17
SCALE: 1"=20'
DESIGNED BY: SM
DRAWN BY: SG

DRAWING NO.: C-2
SHEET 2 OF 5
1700B

PLOTTED: 5/2/2017
 BY: EEC
 FILE: C:\Users\scott\OneDrive\Company Files\Projects\2017\1700B - JHMC - New Patient Tower\Drawings\Phase Exhibits\C-2_Phas I_Plan.dwg