



# Maryland Trauma Physician Services Fund Annual Report

Health General Article § 19-130

**REPORT TO THE MARYLAND GENERAL ASSEMBLY**

**FISCAL YEAR 2025 (JULY 1, 2025 – JUNE 30, 2025)**

DECEMBER 2025



# AGENDA

- ▶ Trauma Care in Maryland
- ▶ Trauma Fund Overview
- ▶ FY 2025 Trauma Fund Financial Summary Data
- ▶ Recommendations for Improvement



# Trauma Care: Eliminating Preventable Death & Disability From Injury

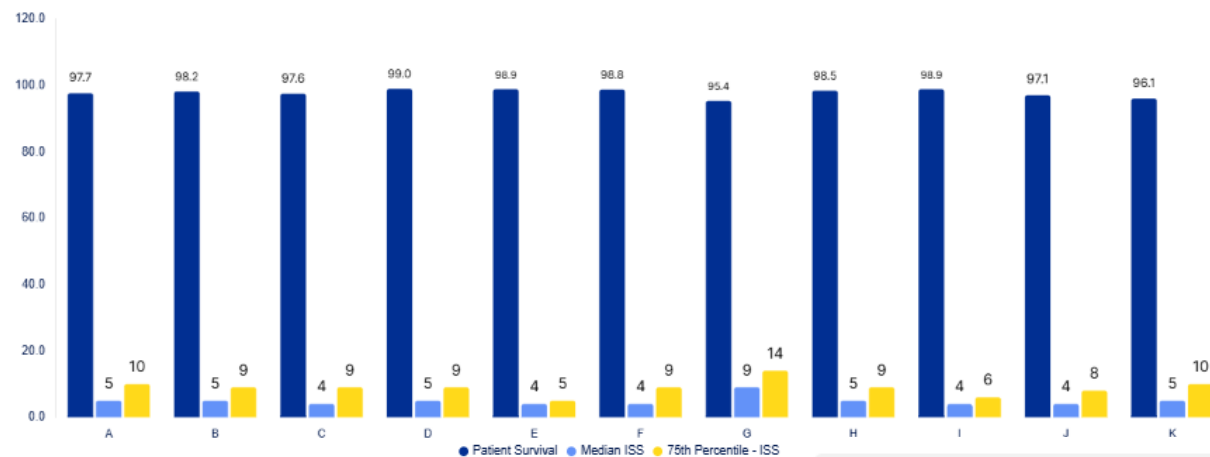
OUR GOAL: To administer stable, accessible financial support that enables all Marylanders to receive high performing, top tier quality, equitable trauma care, regardless of geography, sociodemographic group, or circumstance.

- ▶ Quality of trauma care can be measured through clinical quality indicators, time to treatment, patient satisfaction, morbidity, and mortality.
- ▶ Research shows that greater per capita funding for trauma care correlates to higher quality care and better patient outcomes.
- ▶ Research reveals disparities and structural inequity in trauma care including access, response rate and timeliness, community/bystander response, and ultimately, outcomes.



# Maryland Trauma Care Dashboard – MIEMSS

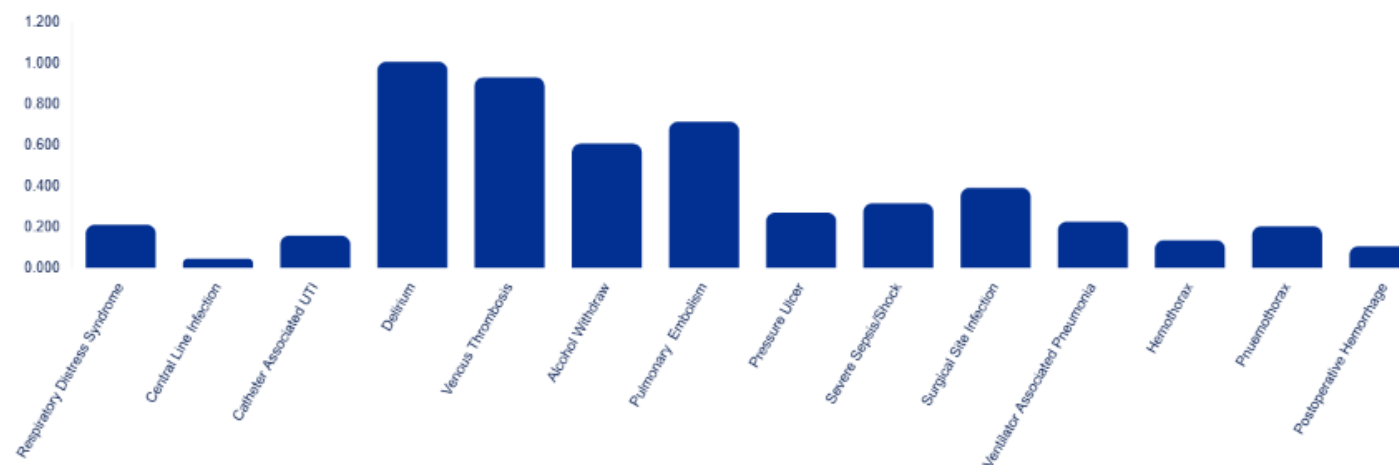
% of Patients Who Survived & ISS vs Trauma Center



- ▶ Survival rate is above 95% for all MD trauma centers.
- ▶ Some trauma centers receive patients with more severe injuries, on average.
- ▶ Higher Injury Severity Scores often mean patients experience more complications and lower survival rates.

- ▶ Trauma Centers report quality measure data to the Maryland Institute for Emergency Medical Services Systems.
- ▶ Current dashboards do not allow us to see disparities in MD trauma care, nor can we compare MD trauma care with quality of trauma care in other states.
- ▶ National trauma quality data is limited. However, to track progress toward our goal for excellence in Maryland trauma care, more granular, focused analysis is needed.

In-Hospital Complication Occurrence



Source: MIEMSS MD Trauma Statistics CY 2024 Dashboard, <https://www.miemss.org/home/Hospitals/Trauma-System-Dashboard-Maryland>



# Maryland Trauma Physician Services Fund (Trauma Fund)

- ▶ The Trauma Fund was established by Maryland General Assembly in 2003 to aid Maryland's trauma system.
- ▶ Per statute, § 19-130 of the Health General Article, the Maryland Health Care Commission administers the Trauma Fund.
- ▶ The statute has been modified several times since 2003 – latest change in 2024 included several improvements (SB 1032/HB1439).
- ▶ Covers the cost of medical care provided to trauma patients at Maryland's designated trauma centers and specialty centers.
- ▶ Reimburses MIEMSS designated trauma centers for:
  - Uncompensated care
  - Services to Medicaid-enrolled patients
  - Trauma related on-call and standby expenses\*
  - Other costs incurred for the delivery of trauma care, including equipment, through a grant program

\* **On-call payments** are paid to hospitals for physicians not at the hospital but able to respond within 30 minutes.  
**Standby payments** are paid to physicians already at the hospital and ready to respond.



# Providers Eligible for Trauma Fund Reimbursement

- ▶ Statute dictates that Maryland’s trauma centers and specialty centers are eligible for reimbursement, as designated by the Maryland Institute for Emergency Medical Services (MIEMSS).
- ▶ This includes pediatric trauma centers in Maryland (and serving Maryland patients), and trauma specialty referral centers.
- ▶ Includes:
  - Level I trauma centers
  - Level II trauma centers
  - Level III trauma centers
  - Pediatric trauma centers\*
  - Trauma specialty referral centers\*
  - Primary adult resource center (PARC)\*

<b>Level I</b>	Johns Hopkins Adult Johns Hopkins Pediatric
<b>Level II</b>	Suburban Hospital University of Maryland – Cap Region Sinai Hospital Johns Hopkins Bayview Medical Center
<b>Level III</b>	Meritus Medical Center Tidal Health Western Maryland Hospital Center
<b>Pediatric Trauma Centers</b>	Children’s National Medical Center Johns Hopkins Pediatric (also Level I)
<b>Trauma Specialty Referral Centers</b>	Johns Hopkins Adult Burn Program Johns Hopkins Wilmer Eye Institute Curtis National Hand Center at MedStar Union Memorial Hospital
<b>Primary Adult Resource Center (PARC)</b>	R Adams Cowley Shock Trauma Center (UM)

\* Specialty referral centers, PARC, and trauma centers located outside of Maryland are not eligible for the Trauma Fund Grant Program.



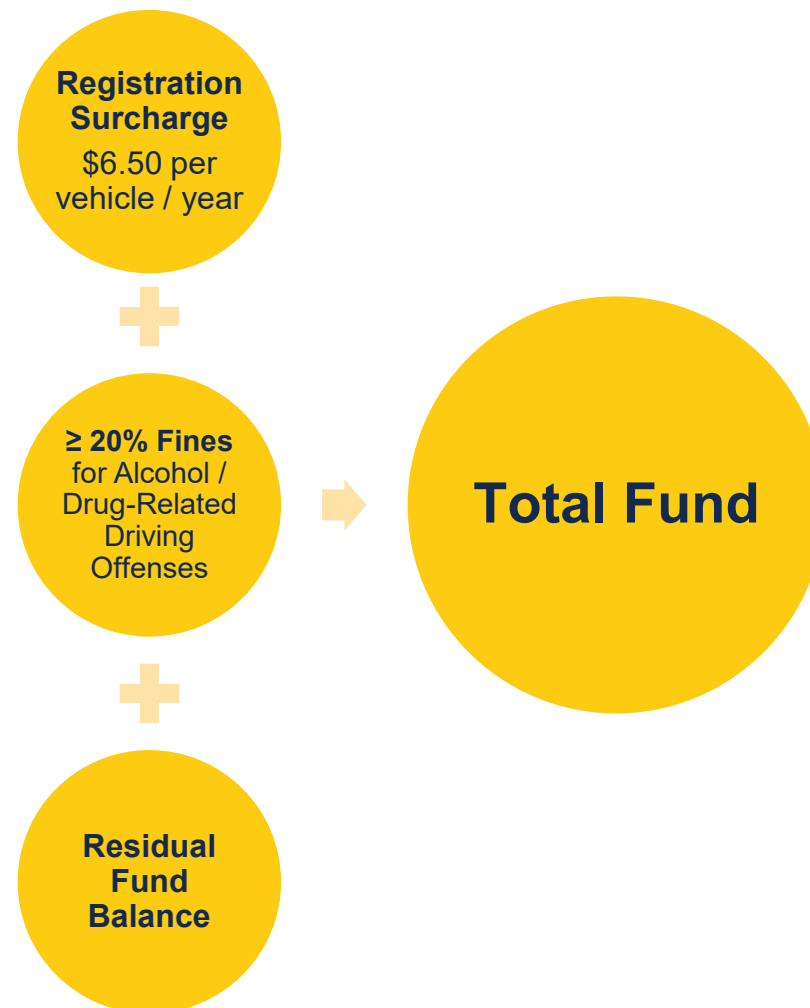
# Requirements for Payment from the Trauma Fund

- ▶ The Trauma Fund reimburses trauma physicians through formulas established in statute and regulation:
  - Reimburses at 100% of the Medicare rate for uncompensated trauma and follow-up care by a trauma center for uninsured and under-insured patients' physicians. As 2024 legislation, services provided by non-physician health care professionals may also be reimbursed.
  - Reimburses Medicaid for undercompensated care, transferring payment to Maryland Medicaid for 100% of Medicare rate for eligible services for Maryland Medicaid-enrollees on the State trauma registry.
  - Reimburses for on-call services for a percentage of total physician costs, up to an hourly cap, depending on the trauma center level.
  - Reimburses up to \$900,000 for standby costs to Children's National Medical Center and Johns Hopkins Pediatric.
  - Directs HSCRC to allow trauma center hospitals to include trauma-related standby expenses in HSCRC- approved rates.
  - Grant funds for eligible MIEMSS designated Maryland trauma centers to support equipment; recently expanded to allow flexibility for other investments.



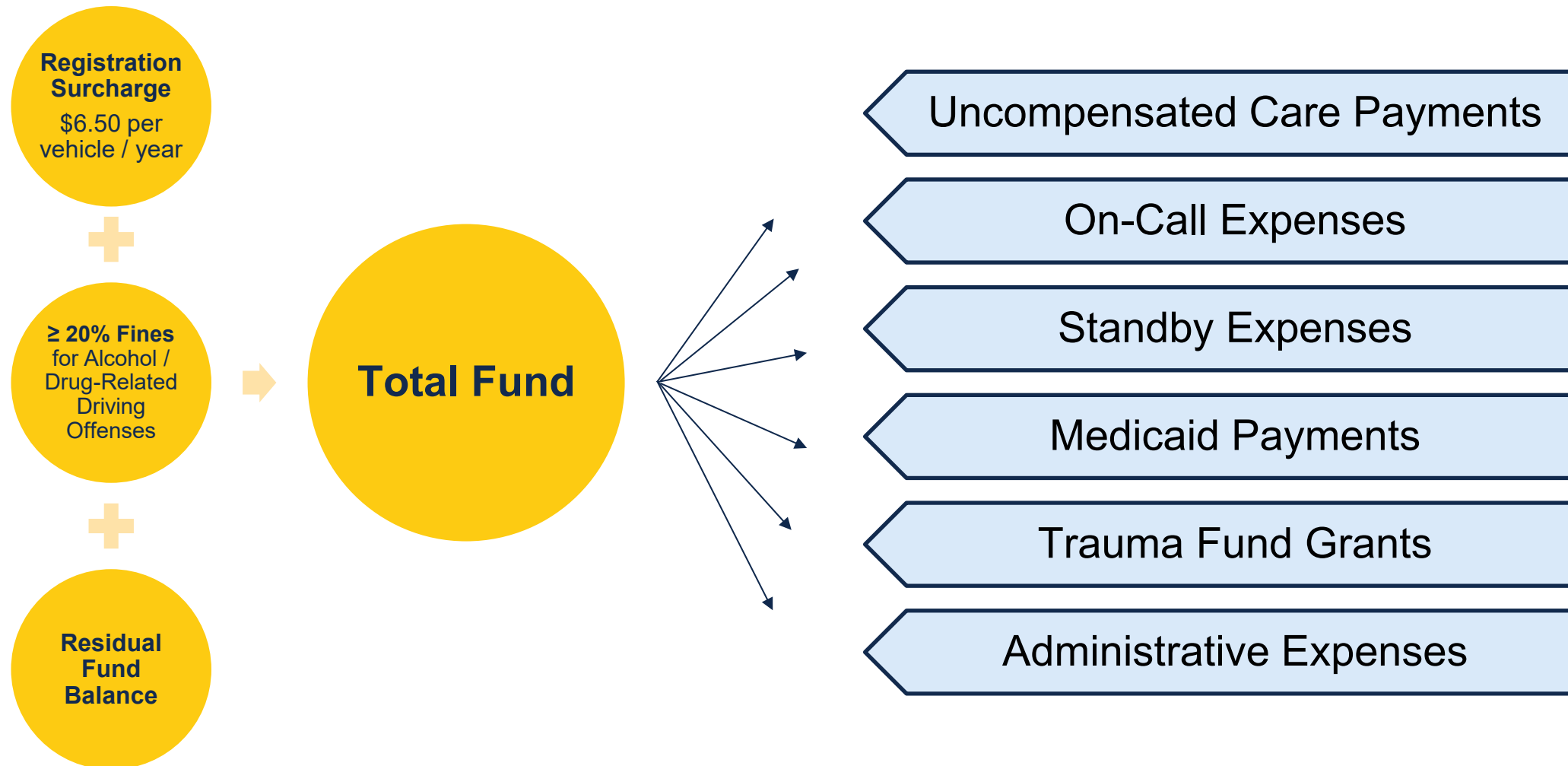
# Trauma Fund Collections – MVA “Revenue”

- ▶ The Trauma Fund is a non-lapsing special fund, supported by the collection of a portion of motor vehicle surcharges paid into it in accordance with § 13–954(b)(2) of the Transportation Article.
- ▶ The Motor Vehicle Administration (MVA) advises that ~4.6 million vehicles are subject to the annual emergency medical services (EMS) surcharge, a portion of which funds the Trauma Fund.
- ▶ In 2024, this surcharge was raised to a total of \$40 (up \$23 per registration), which increases the trauma fund allocation.
- ▶ 2024 legislation also requires that at least 20% of the fines collected for convictions of certain drug and alcohol-related driving offenses be directed toward the Trauma Fund as well.





# Trauma Fund Collections, Payment & Transfers





# 2024 Legislative Changes to the Trauma Fund

- ▶ Senate Bill1032/House Bill1439, effective July 1, 2024.
- ▶ Made several changes to the Trauma Fund:
  - ▶ Increased the surcharge on vehicle renewal registrations for Maryland vehicles – additional \$4.00 per year per registered vehicle transferred to the Trauma Fund (\$6.50/registration).
  - ▶ Non-physician practitioners are now eligible for uncompensated care and Medicaid supplemental payments.
  - ▶ Raised on-call payments for Level II & III trauma centers to 60% of the Reasonable Compensation Equivalent; increased annual hourly cap for Level II trauma centers.
  - ▶ Increased the physicians' standby stipend to Children's National Hospital up to \$900,000. Johns Hopkins Pediatrics Level I trauma center became eligible for the physicians' standby costs stipend up to \$900,000.
  - ▶ Increased flexibilities for the Trauma Grant Program to allow investments beyond equipment; increased annual reporting requirements.
  - ▶ Gave the MHCC greater flexibility to increase on-call and uncompensated care fee levels.
  - ▶ Gave MHCC the authority to issue grants to trauma centers annually.



# FY 2023 – FY 2025 Trauma Fund Overview

Category	FY2023	Cash Flow FY2024	FY2025
Fund Balance at Start of Fiscal Year	\$6,700,833	\$7,483,014	<b>\$9,118,428*</b>
Collections from the Motor Vehicle Administration	\$12,349,547	\$12,366,198	\$25,625,426
Credit Recoveries	\$85,893	\$64,369	\$77,920
Addition from HB200 (2023)	0	\$9,500,000	0
<b>Available Funds</b>	<b>\$19,136,273</b>	<b>\$29,413,581</b>	<b>\$35,716,087</b>
Uncompensated Care Payments	(\$1,485,205)	(\$1,851,344)	(\$1,754,689)
On-Call Expenses	(\$9,263,088)	(\$9,087,930)	(\$18,311,335)
Medicaid Payments	(238,423)	(\$236,529)	(\$211,683)
Children’s National Medical Center - Standby	(\$590,000)	(\$590,000)	(\$900,000)
Trauma Equipment Grants	0	(\$642,361)	(\$4,466,321)
Administrative Expenses	(\$76,543)	(\$108,053)	(\$59,318)
Transferred as Reserves	**	**	(\$894,313)
<b>Total Expenditures</b>	<b>(\$11,653,259)</b>	<b>(\$22,016,217)</b>	<b>(\$26,519,739)***</b>
<b>Ending Trauma Fund Total</b>	<b>\$7,483,014</b>	<b>\$7,397,364*</b>	<b>\$8,302,035</b>

\* Difference due to late journal entry, increasing balance forward.

\*\* Data not available.

\*\*\* Expenditure total is adjusted based on credit recoveries (\$77,920).



# Recommendations for Improving Trauma Fund Operations



Improvements to Trauma Center Reporting and Data Integration



Improving Documentation for Standard Operating Procedures



Improving the Grant Application Process



# QUESTIONS?



# APPENDIX



# FY 2025 Summary of Uncompensated Care Funds Requested & Disbursed

Uncompensated Care	Funds Requested	Funds Disbursed	Percent of Total
Aminullah Amini	\$1,064,742	\$41,566	2%
Bethesda Chevy Chase Orthopaedic Assoc.	\$87,401	\$10,929	1%
Community Surg Practice LLC	\$58,060	\$9,967	1%
Delmarva Radiology, PA	\$9,014	--	--
Emergency Services Associates	\$569,832	\$57,802	3%
Fredrick Watkins	\$48,508	\$8,049	<1%
Jeffrey Muench	\$115,592	\$10,055	1%
JHU, Clinical Practice Association	\$323,103	--	--
Medical Practices of Antietam, LLC	\$337,267	\$1,324	<1%
Meritus Physicians - Trauma	\$47,498	\$8,315	<1%
Mohammad Khan	\$111,315	\$105,583	6%
Shock Trauma Associates, PA	\$5,994,012	\$818,204	47%
Trauma Surgical Associates	\$41,936	\$2,229	<1%
Univ Of MD Diagnostic Imaging Specialists	\$1,645,130	\$191,980	11%
Univ Of MD Eye Associates, PA	\$11,759	\$3,542	<1%
Univ Of MD Oral Maxial Surgical Associates	\$7,514	\$2,986	<1%
Univ Of MD Ortho Trauma Associates	\$3,721,901	\$482,157	27%
<b>Uncompensated Care Total</b>		<b>\$1,754,689*</b>	

\* Total is accurate; lines may not sum due to rounding.

-- No payment made; claim either not eligible or inaccurately coded.



# FY 2025 Summary of On-Call & Standby Funds Requested & Disbursed

On-Call Stipend	Funds Requested	Funds Disbursed	Percent of Total
Dimensions Health Corporation	\$2,653,473	\$2,623,096	14%
Johns Hopkins Bayview Medical Center	\$2,436,010	\$2,072,214	11%
Johns Hopkins Hospital	\$450,286	\$418,249	2%
Johns Hopkins Hospital (Adult Burn Center)	\$357,310	\$316,970	2%
Johns Hopkins Hospital (Pediatric Trauma)	\$125,922	\$211,313	1%
Johns Hopkins Hospital (Wilmer)	\$105,251	\$105,657	1%
Medstar Union Memorial Hospital Inc	\$284,800	\$175,331	1%
Meritus Medical Center Inc	\$4,787,620	\$2,971,847	16%
Sinai Hospital of Baltimore Inc	\$1,257,724	\$1,876,915	10%
Suburban Hospital	\$2,211,813	\$2,072,214	11%
Tidal Health Peninsula Regional Inc	\$3,650,125	\$2,767,715	15%
UPMC Western Maryland Corporation	\$3,876,968	\$2,699,816	15%
<b>On-Call Stipend Total</b>		<b>\$18,311,335*</b>	

Note: Trauma Centers may have higher payments than requested costs due to reconciliation.

Standby Stipend	Funds Requested	Funds Disbursed
Children's National Hospital	\$3,784,391	\$900,000
Johns Hopkins Pediatrics	--	--
<b>Standby Stipend Total</b>		<b>\$900,000</b>



# FY 2025 Summary of Trauma Fund Grant Program

Equipment Grant	Funds Requested	Funds Disbursed	Percent of Total
Dimensions Health Corporation	\$524,766	\$524,766	12%
Johns Hopkins Bayview Medical Center Inc	\$714,286	\$714,286	16%
Meritus Medical Center Inc	\$712,349	\$712,349	16%
Sinai Hospital of Baltimore Inc	\$713,580	\$713,580	16%
Suburban Hospital	\$680,458	\$680,458	15%
Tidal Health Peninsula Regional Inc	\$470,627	\$470,627	11%
Western MD Regional Medical Ctr	\$650,255	\$650,255	15%
<b>Equipment Grant Total</b>		<b>\$4,466,321</b>	



# FY 2025 Summary of Hospital Self-Reported Costs to HSCRC

Trauma Center	Inpatient Only	Outpatient Only	All Stand-By
Johns Hopkins Hospital	\$1,420,020	\$221,712	\$1,641,732
Johns Hopkins Hospital - Bayview	\$692,656	\$108,146	\$800,802
Meritus Medical Center	\$888,604	\$449,183	\$1,337,787
Shock Trauma	\$2,683,473	\$265,398	\$2,948,871
Sinai Hospital	\$1,090,819	\$934,716	\$2,025,535
Suburban Hospital	\$717,401	\$307,662	\$1,025,063
Tidal Health Peninsula Regional	\$0	\$0	\$0
UM Capital Region Medical Center	\$2,691,269	\$79,292	\$2,770,561
Western Maryland Regional Medical Center	\$544,549	\$112,517	\$657,066
<b>Total Self-Reported Standby Costs</b>	<b>\$10,728,791</b>	<b>\$2,478,626</b>	<b>\$13,207,417</b>

*Note: Peninsula Regional Medical Center reports no standby costs. The update factor for FY 2025 was 4.24%.*