



MARYLAND
Health Care
Commission

Center for Quality Measurement and Reporting

Maternal Health Initiatives

COURTNEY CARTA, CHIEF, HOSPITAL QUALITY

TERESA BROWN, METHODOLOGIST



Agenda

- ▶ Background
- ▶ MHCC consumer site measures
- ▶ Maryland Maternal Health Hospital Scorecard
- ▶ Ongoing initiatives
- ▶ Outreach efforts



Maternal and Child Health Outcomes

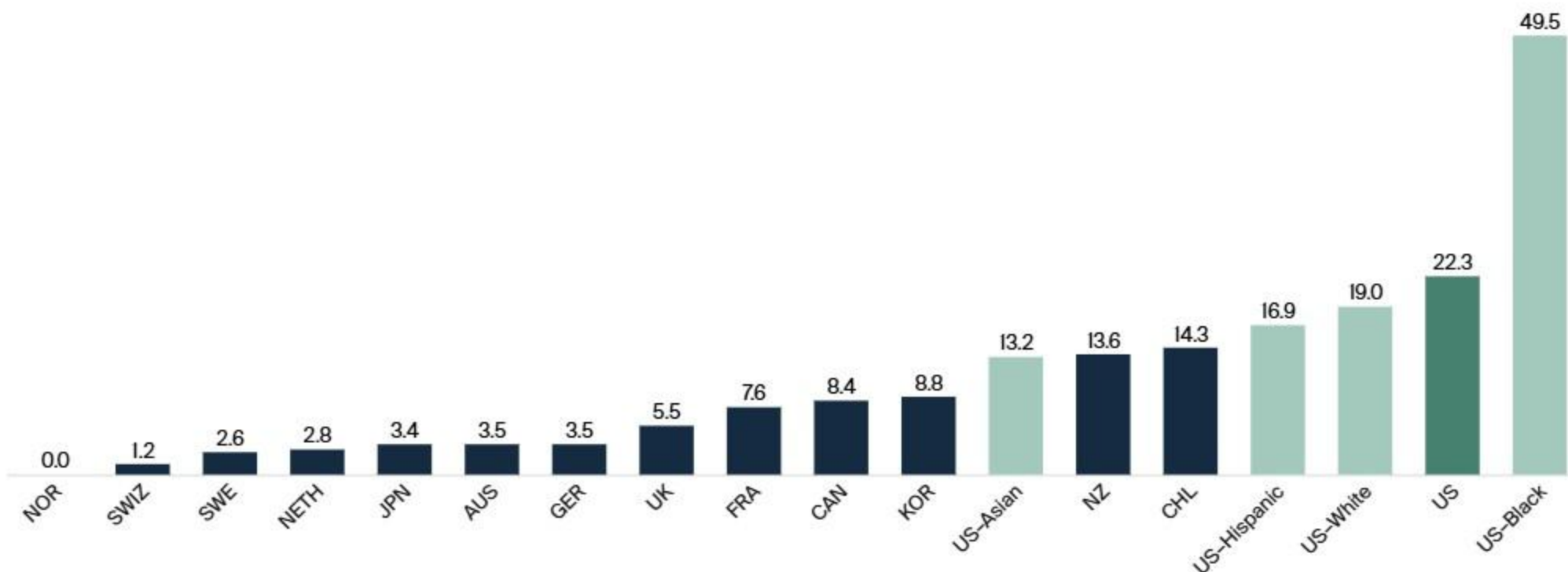
- ▶ Despite advanced healthcare infrastructure, the US reports worse maternal and child health outcomes compared to other industrialized countries
 - ▶ Maternal mortality rates are 2-3x higher than other high-income countries
 - ▶ Infant mortality rates are ~2x higher than other high-income countries
- ▶ Key contributing factors include:
 - ▶ Chronic health conditions
 - ▶ Unequal access to healthcare
 - ▶ Persistent racial and socioeconomic disparities

Source: Commonwealth Fund Maternal and Child Mortality: How do US States Compare Internationally – [October 25 Issue Brief](#)



The United States continues to have the highest maternal death rate, with the rate for Black women by far the highest of any group.

Maternal deaths per 100,000 live births



Source: Commonwealth Fund Insights into the U.S. Maternal Mortality Crisis: An International Comparison – [June 2024 Issue Brief](#)



Maternal and Child Health Disparities

- ▶ Significant racial disparities exist in maternal and child outcomes
 - ▶ **Nationally:** Black, non-Hispanic women had a maternal mortality ratio 2.6x higher than White, non-Hispanic women
 - ▶ **Maryland:** Black, non-Hispanic women had a maternal mortality ratio 2.3x higher than White, non-Hispanic women
- ▶ Maryland Statewide Integrated Health Improvement Strategy (SIHIS)
 - ▶ Maternal and Child Health is a priority for the State

Source: MDH Maternal and Child Health Population Health Improvement Fund Program Year Three – [FY2024 Annual Report](#)



Maternal Health Quality Measures - Hospital

What information on Hospitals are you looking for?

[Hospital Visitation Policies During COVID](#)

I need to find a hospital near me based on

A Specific Condition or Procedure

Infection Rates

Maternity Care

Patient Reviews

MHCC Resource Guide: Maternity hospital services, delivery volume, and complication information can be found [here](#)

Mother and Baby

See confidence intervals

Better than Maryland
 Same as Maryland
 Worse than Maryland
 No data for comparison
 Better than National
 Same as National
 Worse than National
 No data for comparison

No data = not enough data to calculate, not enough data to report, or no data available

Subtopic	Measure	Hospital Score	Maryland Score	National Score	Performance Comparison
Complications	How often a baby is injured during delivery	4.9	6.2	4.7	
Complications	How often there are obstetric injuries to the mother after a vaginal delivery (with instrument)	163.0	108.8	117.3	
Complications	How often there are obstetric injuries to the mother after a vaginal delivery (without instrument)	20.8	15.7	17.4	
Delivery	How often babies in the hospital are delivered using cesarean section when this is the mother's first birth	15.6%	17.9%	15.6%	
Delivery	How often babies in the hospital are delivered vaginally when the mother previously delivered by cesarean section (no complications)	14.5%	17.2%	14.4%	
Delivery	Newborn deliveries scheduled 1-3 weeks earlier than medically necessary	1.0% ²	1.0%	2.0%	
Delivery	Percentage of births (deliveries) that are C-sections	28.2%	29.8%	27.8%	

Footnotes

²: Data submitted were based on a sample of cases/patients.



Maternal Quality Measures – Health Plans



MARYLAND
Health Care
Commission

Long Term Care
Planning
Toolkit

Learn About
Health
Equity

Additional
Resources

About
Us

AA

Translate

Provider Info



MDH Debuts New Maryland Maternal Health Hospital Report Card



Prenatal and Postpartum Care

Measures that comprise this row	Rating	Score	Maryland Average HMO Score	Maryland Average Compared to National
Timely Prenatal Care – 1st Trimester of Pregnancy or 0 To 42 Days of Enrollment	★★★☆☆	74.0%	87.4%	🇺🇸 ↑
Timely Postpartum Care – 7 To 84 Days After Delivery	★★★☆☆	71.9%	86.4%	🇺🇸 ↑



Maternal Health Score Card

Maryland Maternal Health Act of 2024

- ▶ The Health Secretary, in collaboration with the MHCC, must develop an annual report card for birthing facilities in Maryland
- ▶ The report must include the following data:
 - ▶ Number of vaginal deliveries
 - ▶ Number of cesarean deliveries
 - ▶ Rate of complications (e.g., maternal hemorrhage, laceration, infection) by delivery type
 - ▶ Patient Input/Experience
 - ▶ Must be stratified by race/ethnicity and age



Maternal Health Score Card

- ▶ MHCC Provided:
 - ▶ Bed Counts (total and OB)
 - ▶ AHRQ PSI and IQI measures
 - ▶ Delivery Rates
 - ▶ Obstetric Trauma Rates
 - ▶ Birth Trauma Rates
 - ▶ Vaginal Birth after Cesarean (VBAC) Rates
 - ▶ Stratified by age and race
 - ▶ Maternity-specific Patient Satisfaction data
 - ▶ Unique to MHCC
 - ▶ Stratified by age and race
- ▶ Phase 1 published July 1, Phase 2 published October 1
 - ▶ <https://health.maryland.gov/dataoffice/mdh-dashboards/Pages/MHHReportCard.aspx>



Ongoing Initiatives

- ▶ MHCC Collaborative with HSCRC and MHA on Hospital Patient Satisfaction
- ▶ Mid-Atlantic Patient Safety Center's focus on maternal health
 - ▶ [B.I.R.T.H. Equity Maryland](#)
 - ▶ [Count the Kicks](#)
- ▶ Other MDH initiatives
 - ▶ [Partnership with MDMOM](#)
 - ▶ [Babies Born Healthy](#)
 - ▶ [Digitization of Prenatal and Postpartum forms](#)
- ▶ Outreach campaigns and social media amplification are ongoing to socialize the dashboard and other efforts



Questions?



Backup Slides



Last Updated: 10/1/2025

Show Release Notes

Facility Search

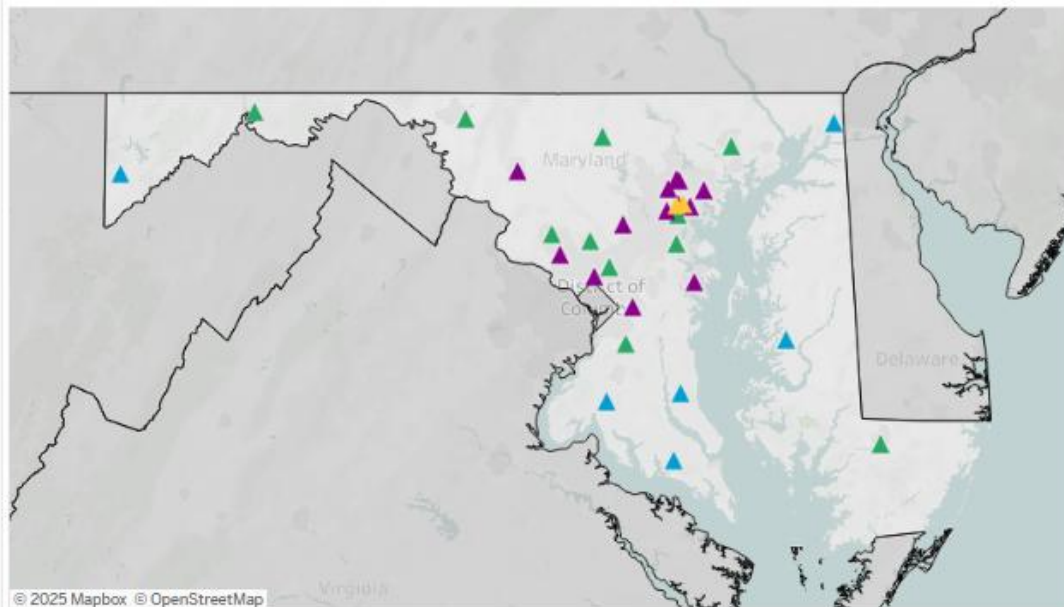
Facility Search

About Data

On May 16, 2024, Governor Moore signed HB 1051/SB 1059 known as the Maryland Maternal Health Act of 2024. This law promotes many initiatives and programs designed to improve maternal healthcare for Maryland mothers and birthing people all across the state, including an evaluation or "report card" of the state's birthing hospitals. The Maternal Health Hospital Report Card is a tool that provides information about Maryland's birthing hospitals and patient populations. The Maryland Department of Health does not endorse any particular hospital and strongly suggests that you discuss your specific health care needs with your health care provider.

NICU
 Doulas for Delivery
 Lactation Services Offered
 Postpartum Tubal Ligation Offered
 VBAC Offered
 Midwives for Delivery
 Policy to Prevent Early Elective Delivery
 RSV Protection Offered to All Infants

Select a facility from the map or list below to view facility details and other information.



© 2025 Mapbox © OpenStreetMap

Hospital Level of Care

- ▲ Level 1 - Basic Care
- ▲ Level 2 - Specialty Care
- ▲ Level 3 - Subspecialty Care
- ▲ Level 4 - Regional Perinatal Health Care

Search Facility

Showing 32 facilities

Adventist Healthcare Shady Grove Hospital

Level 3 - Subspecialty Care
9901 Medical Center Dr, Rockville, MD, 20850

Adventist Healthcare White Oak Medical Center

Level 2 - Specialty Care
11890 Healing Wy, Silver Spring, MD, 20904

Ascension St. Agnes Hospital

Level 3 - Subspecialty Care
900 S Caton Ave, Baltimore, MD, 21229

CalvertHealth Medical Center

Level 1 - Basic Care
100 Hospital Rd, Prince Frederick, MD, 20678

Carroll Hospital Center

Level 2 - Specialty Care
200 Memorial Ave, Westminster, MD, 21157

ChristianaCare, Union Hospital

Level 1 - Basic Care
106 Bow St, Elkton, MD, 21921

Frederick Health Hospital

Level 3 - Subspecialty Care
400 W 7th St, Frederick, MD, 21701

Garrett Regional Medical Center

Level 1 - Basic Care
251 N 4th St, Oakland, MD, 21550

Greater Baltimore Medical Center

Level 3 - Subspecialty Care
6701 N Charles St, Towson, MD, 21204

Contact:

Data Inquiries:
Data Office,
mdh.dataoffice@maryland.gov

Media Inquiries:
Office of Communications,
mdh.communications@maryland.gov

Have feedback for us?
Click here:





Facility Details

Facility Search

Facility Details

Delivery Details

Complications

Patient Satisfaction

About Data

Contact:

Data Inquiries:
Data Office,
mdh.dataoffice@maryland.gov

Media Inquiries:
Office of Communications,
mdh.communications
@maryland.gov

Have feedback for
us?
Click here:



Adventist Healthcare Shady Grove Hospital
Level 3 - Subspecialty Care
9901 Medical Center Dr, Rockville, MD, 20850

Select Facility

Adventist Healthcare Shady Grove Hospital

Overview

Total Facility Beds: 355	NICU: ✔ ⓘ	Breastfeeding/Lactation Services:
Total Obstetric Beds: 46 ⓘ	VBAC Offered: ✔ ⓘ	This hospital offers lactation services in the hospital and outpatient setting. ⓘ
Recognition as Baby-Friendly: ✘ ⓘ	Midwives for Delivery: ✔ ⓘ	Postpartum tubal ligation during labor/delivery admission offered: ✔ ⓘ
Recognition as Birthing Friendly: ✔ ⓘ	Doulas for Delivery:	Policy to prevent early elective deliveries: ✔ ⓘ
RSV Protection Offered to: Higher-Risk Infants ⓘ	This hospital allows patients to bring their own doulas. ⓘ	

Education and Training Initiatives

By the end of 2024, the percentage of obstetric doctors and advanced clinicians who took part in respectful and equitable care training in the last two years. (Cumulative percentage)	By the end of 2024, the percentage of obstetric nurses who took part in respectful and equitable care training in the last two years. (Cumulative percentage)	Was at least one obstetric drill performed for any maternal safety topic in 2024?	Progress on development of culturally and linguistically appropriate patient education materials on urgent postpartum warning signs in 2024.
90-100%	90-100%	✔	Advanced Implementation

The Maryland Department of Health does not endorse any particular hospital and strongly suggests that you discuss your specific health care needs with your health care provider.



Delivery Details

Facility Search

Facility Details

Delivery Details

Complications

Patient Satisfaction

About Data

Adventist Healthcare Shady Grove Hospital
Level 3 - Subspecialty Care
9901 Medical Center Dr, Rockville, MD, 20850

Select Facility

Adventist Healthcare Shady Grove Hospital

Total Deliveries

Vaginal Deliveries

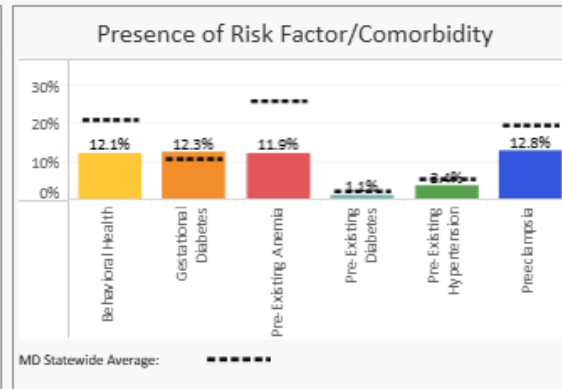
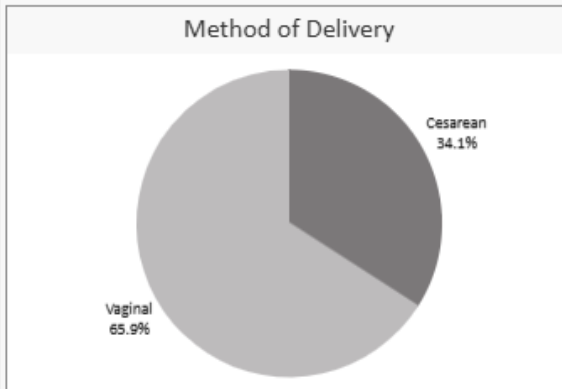
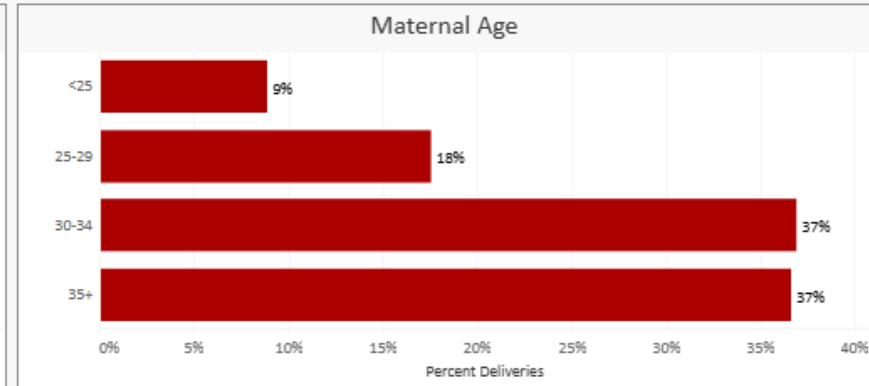
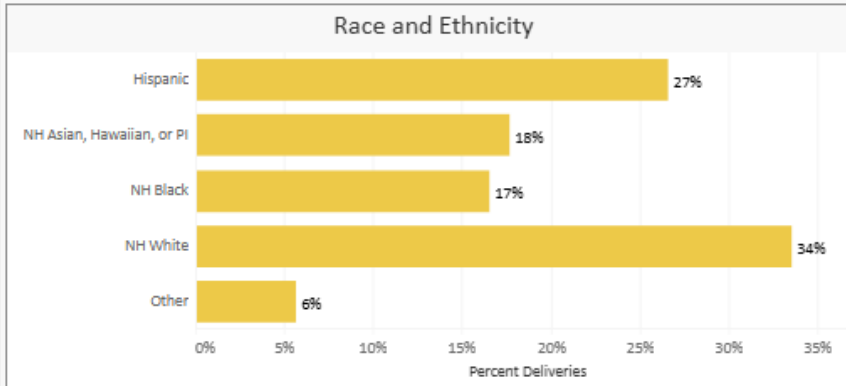
Cesarean Deliveries

Year

2024

Total Delivery Hospitalizations: 3,900

Delivery Hospitalizations by:



Race/ Ethnicity	Percent Deliveries
Hispanic	0.00%
NH Asian, Hawaiian, or PI	0.00%
NH Black	0.00%
NH White	0.00%
Other	0.00%
Total	0.29%
State Mean	0.71%

Health Insurance Coverage

Presence of Risk Factor/Comorbidity

Gestational Age



Delivery Complications (Risk-Adjusted)

Facility Search

Facility Details

Delivery Details

Complications

Patient Satisfaction

About Data

Adventist Healthcare Shady Grove Hospital
Level 3 - Subspecialty Care
9901 Medical Center Dr, Rockville, MD, 20850

Select Facility

Adventist Healthcare Shady Grove Hospital

Severe Maternal Morbidity

Obstetric Hemorrhage

Post-Admission Infection

All Deliveries

Vaginal Deliveries

Cesarean Deliveries

0.8% of all delivery hospitalizations experienced Post-Admission Infection (Maryland: 0.8%)



0.7% of vaginal delivery hospitalizations experienced Post-Admission Infection (Maryland: 0.7%)



1.1% of cesarean delivery hospitalizations experienced Post-Admission Infection (Maryland: 1.1%)



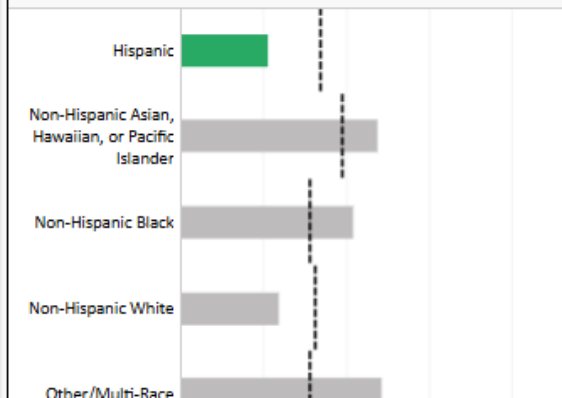
Select Demographic

Race/Ethnicity

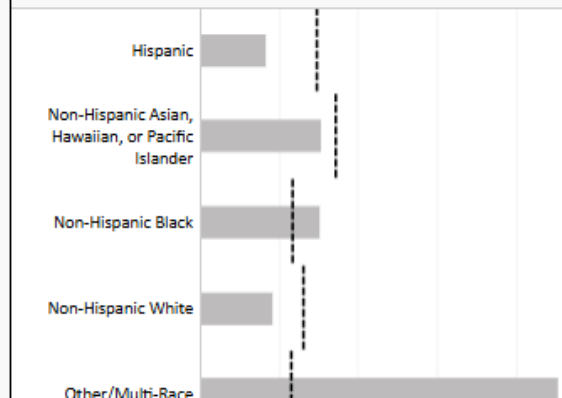
Display Confidence Intervals

- Hospital Statistically Lower than State
 - Hospital Not Statistically Different from State
 - Hospital Statistically Higher than State
- ***** MD Statewide Percentage

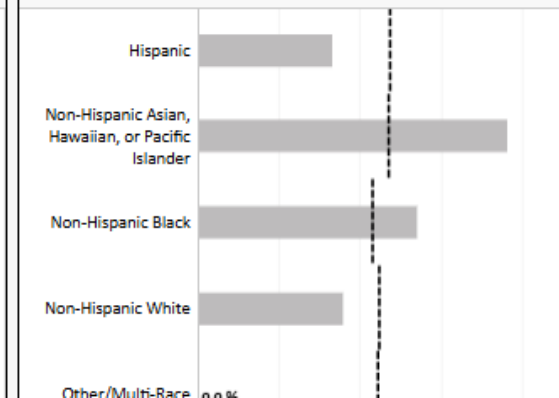
Post-Admission Infection by Race/Ethnicity (All Deliveries)



Post-Admission Infection by Race/Ethnicity (Vaginal Deliveries)



Post-Admission Infection by Race/Ethnicity (Cesarean Deliveries)



Contact:

Data Inquiries:
Data Office,



Maternal Patient Satisfaction (Unadjusted)*

Facility Search

Facility Details

Delivery Details

Complications

Patient Satisfaction

About Data

Adventist Healthcare Shady Grove Hospital
Level 3 - Subspecialty Care
9901 Medical Center Dr, Rockville, MD, 20850

Select Facility

Adventist Healthcare Shady Grove Hospital

Select Demographic**

Total



Facility Name	Highly Rated	Highly Recommended
	Total	Total
Adventist Healthcare Shady Grove Hospital	75%	83%
Adventist Healthcare White Oak Medical Center	79%	82%
Ascension St. Agnes Hospital	70%	75%
CalvertHealth Medical Center	73%	79%
Carroll Hospital Center	80%	83%
ChristianaCare, Union Hospital	73%	78%
Frederick Health Hospital	73%	79%
Garrett Regional Medical Center	73%	76%
Greater Baltimore Medical Center	71%	83%
Holy Cross Germantown Hospital	76%	80%
Holy Cross Hospital	71%	76%
Johns Hopkins Bayview Medical Center	72%	81%
Johns Hopkins Hospital	68%	76%
Johns Hopkins Howard County Medical Center	68%	80%
Lifebridge Sinai Hospital	59%	69%
Luminis Health Anne Arundel Medical Center	65%	78%
MedStar Franklin Square Medical Center	66%	73%
MedStar Harbor Hospital	64%	67%
MedStar Montgomery Medical Center	77%	81%
MedStar Saint Mary's Hospital	65%	71%
MedStar Southern Maryland Hospital Center	55%	64%
Mercy Medical Center	72%	81%
Meritus Medical Center	72%	77%
TidalHealth Peninsula Regional Medical Center	73%	79%
University of Maryland Baltimore Washington Medical Center	64%	69%
University of Maryland Capital Region Medical Center	69%	69%
University of Maryland Charles Regional Medical Center	47%	53%
University of Maryland Medical Center	66%	68%
University of Maryland Shore Medical Center at Easton	68%	77%
University of Maryland St. Joseph Medical Center	78%	86%
University of Maryland Upper Chesapeake Medical Center	69%	75%

Contact:

Data Inquiries:
Data Office,
mdh.dataoffice@maryland.gov

Media Inquiries:
Office of Communications,
mdh.communications@maryland.gov



Maternal Patient Satisfaction (Unadjusted)*

Facility Search

Facility Details

Delivery Details

Complications

Patient Satisfaction

About Data

Contact:

Data Inquiries:
Data Office,
mdh.dataoffice@maryland.gov

Media Inquiries:
Office of Communications,
mdh.communications@maryland.gov

Adventist Healthcare Shady Grove Hospital
Level 3 - Subspecialty Care
9901 Medical Center Dr, Rockville, MD, 20850

Select Facility

Adventist Healthcare Shady Grove Hospital

Select Demographic**

Age Group



Facility Name	Highly Rated					Highly Recommended				
	< 25	25-29	30-34	35+	Total	< 25	25-29	30-34	35+	Total
Adventist Healthcare Shady Grove Hospital	76%	78%	75%	73%	75%	81%	83%	85%	82%	83%
Adventist Healthcare White Oak Medical Center	79%	93%	75%	73%	79%	77%	89%	91%	72%	82%
Ascension St. Agnes Hospital	76%	76%	64%	66%	70%	80%	80%	74%	69%	75%
CalvertHealth Medical Center		73%	74%	74%	73%		81%	80%	74%	79%
Carroll Hospital Center	93%	73%	83%	77%	80%	93%	80%	85%	80%	83%
ChristianaCare, Union Hospital	67%	76%	69%	82%	73%	77%	65%	81%	88%	78%
Frederick Health Hospital		67%	76%	71%	73%		76%	84%	75%	79%
Garrett Regional Medical Center	57%	78%	81%	64%	73%	57%	73%	86%	91%	76%
Greater Baltimore Medical Center		67%	71%	72%	71%		78%	83%	85%	83%
Holy Cross Germantown Hospital	80%	75%	77%	74%	76%	81%	81%	81%	77%	80%
Holy Cross Hospital	78%	75%	67%	68%	71%	79%	78%	74%	74%	76%
Johns Hopkins Bayview Medical Center	82%	81%	65%	73%	72%	91%	90%	72%	82%	81%
Johns Hopkins Hospital	77%	75%	65%	69%	68%	67%	82%	76%	75%	76%
Johns Hopkins Howard County Medical Center		67%	65%	71%	68%		78%	81%	80%	80%
Lifebridge Sinai Hospital	52%	62%	52%	67%	59%	61%	65%	68%	75%	69%
Luminis Health Anne Arundel Medical Center	73%	60%	63%	68%	65%	82%	76%	79%	78%	78%
MedStar Franklin Square Medical Center	64%	63%	66%	71%	66%	64%	71%	72%	79%	73%
MedStar Harbor Hospital	78%	61%	63%	62%	64%	77%	64%	68%	64%	67%
MedStar Montgomery Medical Center		87%	68%	81%	77%		77%	77%	84%	81%
MedStar Saint Mary's Hospital	50%	62%	66%	69%	65%	61%	75%	65%	79%	71%
MedStar Southern Maryland Hospital Center	68%	62%	55%	48%	55%	72%	68%	69%	54%	64%
Mercy Medical Center	74%	75%	67%	75%	72%	79%	81%	81%	83%	81%
Meritus Medical Center	76%	76%	68%	69%	72%	71%	81%	76%	78%	77%
TidalHealth Peninsula Regional Medical Center		76%	76%	68%	73%		88%	73%	78%	79%
University of Maryland Baltimore Washington Medical Center		65%	66%	60%	64%		57%	77%	69%	69%
University of Maryland Capital Region Medical Center	88%	69%	58%	72%	69%	81%	60%	64%	75%	69%
University of Maryland Charles Regional Medical Center			55%	36%	47%			59%	41%	53%
University of Maryland Medical Center		77%	60%	68%	66%		75%	61%	71%	68%
University of Maryland Shore Medical Center at Easton		65%	76%	62%	68%		71%	86%	73%	77%
University of Maryland St. Joseph Medical Center	86%	74%	76%	80%	78%	85%	83%	86%	87%	86%
University of Maryland Upper Chesapeake Medical Center	85%	69%	69%	65%	69%	83%	66%	77%	77%	75%



Maternal Patient Satisfaction (Unadjusted)*

Facility Search

Facility Details

Delivery Details

Complications

Patient Satisfaction

About Data

Contact:

Data Inquiries:
Data Office,
mdh.dataoffice@maryland.gov

Media Inquiries:
Office of Communications,
mdh.communications@maryland.gov

Adventist Healthcare Shady Grove Hospital

Level 3 - Subspecialty Care
9901 Medical Center Dr, Rockville, MD, 20850

Select Facility

Adventist Healthcare Shady Grove Hospital

Select Demographic**

Race/Ethnicity



Facility Name	Highly Rated					Highly Recommended				
	Hispanic	NH Black	NH White	Other	Total	Hispanic	NH Black	NH White	Other	Total
Adventist Healthcare Shady Grove Hospital	60%	74%	74%	76%	75%	73%	77%	85%	83%	83%
Adventist Healthcare White Oak Medical Center		76%	60%	86%	79%		82%	65%	87%	82%
Ascension St. Agnes Hospital	64%	57%	58%	78%	70%	64%	66%	69%	82%	75%
CalvertHealth Medical Center			72%		73%			79%		79%
Carroll Hospital Center			81%	88%	80%			85%	63%	83%
ChristianaCare, Union Hospital			70%	91%	73%			79%	89%	78%
Frederick Health Hospital		87%	68%	86%	73%		80%	79%	79%	79%
Garrett Regional Medical Center			73%		73%			77%		76%
Greater Baltimore Medical Center		70%	71%	73%	71%		72%	85%	83%	83%
Holy Cross Germantown Hospital		63%	63%	81%	76%		74%	74%	82%	80%
Holy Cross Hospital	77%	62%	49%	78%	71%	87%	72%	62%	80%	76%
Johns Hopkins Bayview Medical Center		69%	58%	91%	72%		77%	70%	94%	81%
Johns Hopkins Hospital		62%	69%	67%	68%		63%	78%	76%	76%
Johns Hopkins Howard County Medical Center		63%	66%	74%	68%		75%	81%	80%	80%
Lifebridge Sinai Hospital		66%	57%	66%	59%		71%	68%	75%	69%
Luminis Health Anne Arundel Medical Center		58%	64%	73%	65%		71%	80%	75%	78%
MedStar Franklin Square Medical Center		68%	68%	63%	66%		69%	74%	73%	73%
MedStar Harbor Hospital		66%	65%	60%	64%		64%	68%	67%	67%
MedStar Montgomery Medical Center		73%	76%	79%	77%		81%	78%	83%	81%
MedStar Saint Mary's Hospital		80%	61%	77%	65%		73%	69%	80%	71%
MedStar Southern Maryland Hospital Center		51%	52%	67%	55%		57%	63%	74%	64%
Mercy Medical Center		74%	78%	62%	72%		79%	90%	79%	81%
Meritus Medical Center		59%	73%	75%	72%		76%	75%	79%	77%
TidalHealth Peninsula Regional Medical Center		85%	71%	67%	73%		80%	79%	75%	79%
University of Maryland Baltimore Washington Medical Center		61%	56%	79%	64%		65%	62%	83%	69%
University of Maryland Capital Region Medical Center		60%		88%	69%		59%		87%	69%
University of Maryland Charles Regional Medical Center			38%		47%			45%		53%
University of Maryland Medical Center		62%	62%	77%	66%		70%	64%	73%	68%
University of Maryland Shore Medical Center at Easton			67%	67%	68%			76%	73%	77%
University of Maryland St. Joseph Medical Center		66%	78%	84%	78%		77%	86%	91%	86%
University of Maryland Upper Chesapeake Medical Center			67%	67%	69%			75%	73%	75%