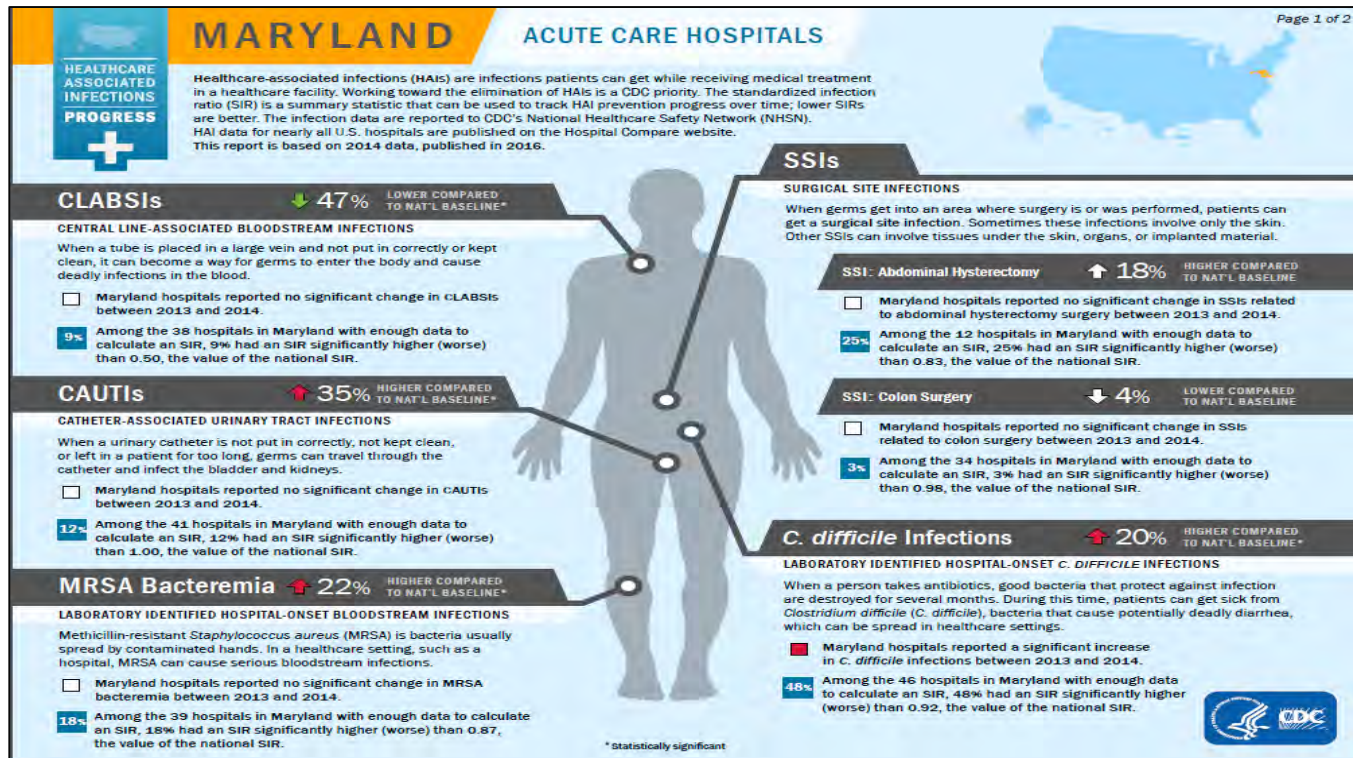


MHA HAI Efforts



Maryland Hospital Association

Review with Leadership



MRSA Bacteremia

↑ 22% HIGHER COMPARED TO NAT'L BASELINE*

LABORATORY IDENTIFIED HOSPITAL-ONSET BLOODSTREAM INFECTIONS

Methicillin-resistant *Staphylococcus aureus* (MRSA) is bacteria usually spread by contaminated hands. In a healthcare setting, such as a hospital, MRSA can cause serious bloodstream infections.

- Maryland hospitals reported no significant change in MRSA bacteremia between 2013 and 2014.
- 18%** Among the 39 hospitals in Maryland with enough data to calculate an SIR, 18% had an SIR significantly higher (worse) than 0.87, the value of the national SIR.



* Statistically significant

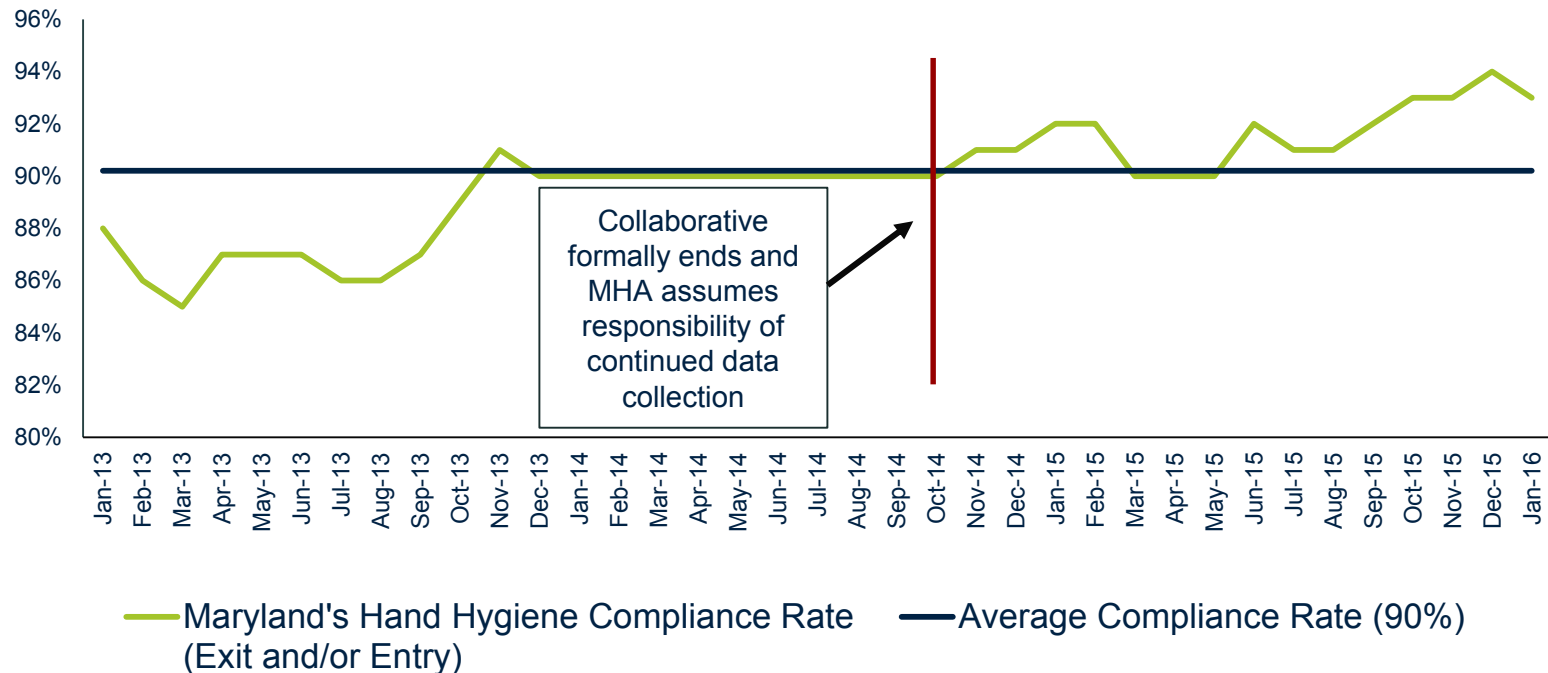
- Convened leadership for a comprehensive review of the CDC report card
 - Executive phone call
 - CCQI
 - Board Meeting

Virtual Networks



- Goal is to create virtual communities in the near future
 - Will provide peer expertise for immediate concerns
 - Allow hospital staff and clinicians to **communicate** and **collaborate**

Hand Hygiene Compliance



- Hand hygiene data collection will continue
 - May be redesigned after a period of review

Enhanced Infection Reports

Catheter-Associated Urinary Tract Infections

██████████ Hospital

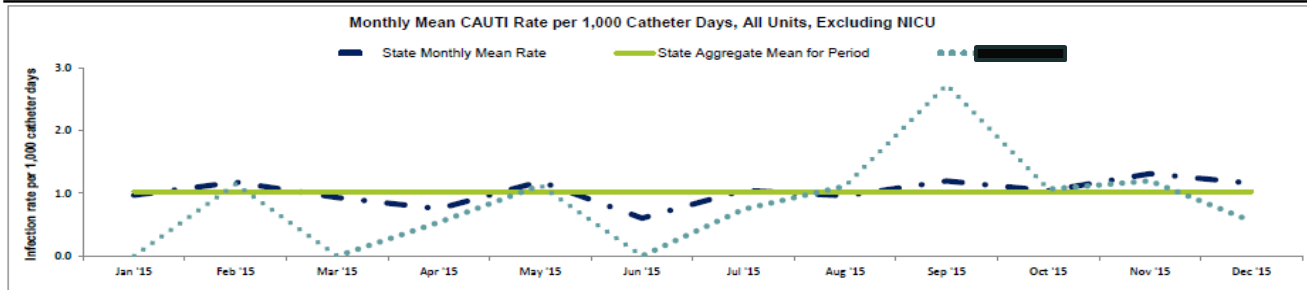
SIRs

0.582 Statewide SIR
For Period: Jan 2015 - Dec 2015

0.906 Achievement Threshold During QBR Payment Policy Performance Period For FY 2018
For Period: Q4 2015 - Q3 2016

0.322 ██████████ SIR
For Period: Jan 2015 - Dec 2015

Infection Rate Data



All Units, Excluding NICU, Maryland

	Jan '15	Feb '15	Mar '15	Apr '15	May '15	Jun '15	Jul '15	Aug '15	Sep '15	Oct '15	Nov '15	Dec '15
Total Reporting Units (n)	379	379	379	378	377	376	376	377	374	374	373	370
Total Number of CAUTIs (a)	38	40	34	26	41	20	36	32	39	35	43	40
Total Number of Catheter Days (b)	39,197	33,975	36,461	34,451	34,495	33,164	34,357	33,338	32,630	33,652	32,749	34,430
Monthly Mean Rate ((a/b)*1000)	1.0	1.2	0.9	0.8	1.2	0.6	1.0	1.0	1.2	1.0	1.3	1.2
Total Number of Patient Days (d)	203,585	176,957	194,329	185,721	185,537	177,305	183,885	182,817	179,692	186,002	178,096	183,054
% Monthly Mean Prevalence (b/d)	19%	19%	19%	19%	19%	19%	19%	18%	18%	18%	18%	19%
Total Units Reporting Zero CAUTI (e)	342	344	350	355	343	357	345	350	341	346	336	338
% Total Units Reporting Zero CAUTI (e/n)	90%	91%	92%	94%	91%	95%	92%	93%	91%	93%	90%	91%

All Units, Excluding NICU, ██████████

Total Number of CAUTIs (a)	0	2	0	1	2	0	2	2	4	2	2	1
Total Number of Catheter Days (b)	2,134	1,744	2,037	1,858	1,775	1,796	2,678	1,795	1,464	1,877	1,670	1,800
Monthly Mean Rate ((a/b)*1000)	0.0	1.1	0.0	0.5	1.1	0.0	0.7	1.1	2.7	1.1	1.2	0.6

Aggregate mean for the twelve month period is 1.03 infections per 1,000 catheter days (green line in graph)

Source: Data from units reporting to the CDC NHSN and conferring rights to the Maryland Hospital Association as of April 21 at 2:30 p.m.

Partners



- Working with and supporting partners
 - MPSC, DHMH, and VHQC collaboratives