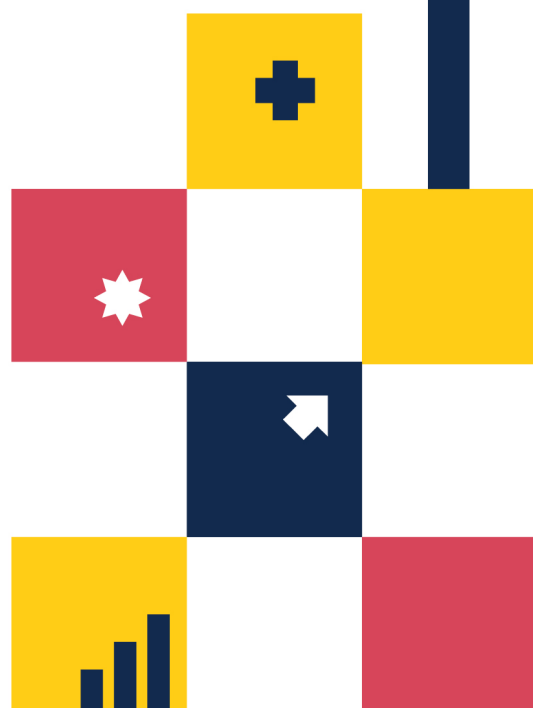


Gender Affirmation Treatment, 2021-22: Results from the APCD



Randolph S. Sergent, Esq.
CHAIRMAN

Ben Steffen
EXECUTIVE DIRECTOR



Table of Contents

Purpose & Background	5
Data Source	8
Methods	8
Results	9
Transgender Members by Payor Type, 2021-22.....	9
Transgender Members by Age, 2021-22	10
Transgender Members by Geographic Region, 2021-22.....	10
Analysis of Claims & Services.....	11
Gender-Affirming Treatment by Service Type and Network Type, 2021-22.....	11
Gender-Affirming Treatment by Payor Type, 2021-22.....	12
Gender-Affirming Treatment Claims Percent by Service Type and Payor Type.....	13
Gender-Affirming Treatment by Geographic Region, 2021-22.....	14
Gender-Affirming Treatment Providers by County, 2021-22.....	15
Gender-Affirming Treatment by Residence Type, 2021-22	17
Gender-Affirming Treatment Providers by Service Type by Geographic Region, 2021-22	17
Gender-Affirming Treatment by service type and cost, 2021-22	18
Gender-Affirming Treatment Claims by Provider Specialty, 2021-22.....	19
Limitation	21
Conclusion.....	21
Appendix 1. Gender Affirming Treatment Procedures by CPT/HCPCS Code.....	22

Appendix 2. Endocrine & Metabolic Agents Included in Retail Pharmacy Reporting	25
Appendix 3. Provider specialties included in the Other Provider category	34
Acknowledgments.....	36
Table 1 Transgender Members by Payor Type, 2021 -22	10
Table 2 GAT by Service Type and Network Type, 2021 -22.....	12
Table 3 GAT by Payor Type, 2021 -22.....	13
Table 4 GAT by Geographic Region, 2021 -22.....	15
Table 5 GAT by County, 2021 -22	16
Table 6 GAT by Resident Type, 2021 -22.....	17
Table 7 GAT by Service Type and Cost, 2021 -22.....	19
Table 8 GAT services by Provider specialty, 2021 -22	20
Figure 1 Transgender Members and Overall Population by Age Group, 2022 (Commercial and Medicaid).....	10
Figure 2 Transgender Members by Geographic Region.....	11
Figure 3 GAT Claims Percentage by Service Type and Payor Type, 2021 -22	14
Figure 4 GAT Claims percentage by Service Type by Geographic region, 2021 -22.....	18

Randolph S. Sergent, Esq., Chairman
Vice President and Deputy General Counsel
CareFirst BlueCross BlueShield

Awawu Agbabiaka, CRNP
Nurse Practitioner
AIM Behavioral Health Services

Arun Bhandari, M.D.
Chesapeake Oncology Hematology
Associates, PA

Hassanatu Blake, PhD, MPH, MBA
Director, Health Equity & Social Justice
National Association of County & City Health
Officials

Marcia Boyle, MS
Founder
Immune Deficiency Foundation

Kenneth Buczynski, M.D.
Founder of Wellspring Family Medicine

Tinisha Cheatham, M.D.
Physician in Chief of the Mid-Atlantic
Permanente Medical Group

Karl Douglas, MBA
Director of Talent Development
Brightview Senior Living

Danielle Stroughton-Duncan, PhD
Education Division Director
COLA, Inc.

Joan L. Gelrud, RN, MSN, FACHE, CPHQ
Court Appointed Special Advocate for children
removed from their homes for child abuse and
neglect

Shante Gilmore, DrPH, MPH
Director, Health Equity Initiatives
The Patient Advocate Foundation

Mark T. Jensen, Esq.
Partner
Bowie & Jensen, LLC

Jovonni Spinner, Ph.D, MPH, CHES
CEO/Founder
Beacon Public Health

Marcus L. Wang, Esq.
Co-Founder, President and General Manager
ZytoGen Global Genetics Institute

Karrie M. Wood
Director of Business Development
Community Bank of the Chesapeake

Purpose & Background

Gender affirmation treatment (GAT) encompasses a range of medical, psychological, and social interventions designed to support individuals in aligning their physical appearance and gender identity. This treatment is crucial for the well-being of transgender and gender non-conforming individuals, as it helps alleviate gender dysphoria and promotes mental health. The process may include hormone therapy, surgeries, voice training, and counseling tailored to meet the unique needs of each person. By providing comprehensive care, gender affirmation treatment fosters a supportive environment where individuals can thrive and live authentically.

Transgender patients face significant barriers when seeking medical treatment, including discrimination and stigma within healthcare settings, lack of trained providers¹, and mental health struggles². Additionally, structural and economic barriers such as being uninsured, unemployed, high costs, insurance coverage issues, and living in poverty further complicate access to necessary treatments, including gender-affirming procedures³. These challenges highlight the need for increased awareness, education, and policy changes to ensure equitable and inclusive healthcare for transgender individuals.

On June 5, 2023, Governor Moore signed an executive order at Government House to safeguard gender-affirming healthcare in Maryland⁴. As a result, Maryland Medicaid began expanding gender-affirming care on January 1, 2024, in accordance with the Trans Health Equity Act, which was enacted following the passage of House Bill 283. Medicaid's policies align with the standards set by the World Professional Association for Transgender Health⁵. The World Professional Association for Transgender Health focuses on understanding and treating gender identity and gender dysphoria while establishing standardized care for transgender and gender-variant individuals⁶.

The Maryland Health Care Commission (MHCC) gathers data quarterly from various healthcare entities operating in the state, consolidating it into the Medical Care Data Base (MCDB), which serves as Maryland's All Payer Claims Database. This data includes claims

¹ <https://www.mayoclinic.org/medical-professionals/endocrinology/news/addressing-the-challenges-of-transgender-health-care/mac-20429315>

² <https://www.americanprogress.org/article/fact-sheet-protecting-advancing-health-care-transgender-adult-communities/>

³ <https://www.ncbi.nlm.nih.gov/pmc/articles/PMC9679590/#r7>

⁴ <https://goci.maryland.gov/wp-content/uploads/sites/2/2024/04/2023-Annual-Report.pdf>

⁵ <https://mgaleg.maryland.gov/mgawebsite/Legislation/Details/hb0283?ys=2023RS&search=True>

⁶ <https://www.wpath.org/>

and membership information from Medicare, Medicaid, private insurers, Third Party Administrators (TPA), and Pharmacy Benefit Managers (PBM), offering insight into healthcare utilization and spending patterns. Analyzing this data provides a comprehensive overview of spending and utilization trends among Maryland residents. Considering the increase in the demand for gender-affirmation treatment, the study's purpose is to describe the distribution of gender-affirmation treatment services using the APCD and show the utilization during the 2021 to 2022 period.

Highlights of the 2021-22 Gender Affirmation Treatment Services

- In the 2021-22 period, a total of 7,880 patients enrolled in commercial and Medicaid (managed care and fee for service) from Maryland or other states received GAT. They were attended to by 5,069 providers and retail pharmacies.
- The transgender population was concentrated in those younger than 40 years of age (refer to Figure 1).
- The Baltimore Metro area, being the most populous MIA rating area, had the highest number of transgender patient (4023 (45%), followed by the DC Metro area (2,054(23%) (refer to Figure 2).
- At the county level, the number of providers varied, with Montgomery County having the highest at 1,159(23%) providers and Somerset County with the lowest at 16 (refer to Table 4).
- The Baltimore Metro rating area had the highest number of providers offering GAT in each service category, totaling 2,125 providers across all categories (refer to Figure 7). Conversely, the Eastern/Southern MD rating area had the lowest number of providers offering GAT services across all categories.
- Among five large commercial plans, CareFirst (26,950) and United Healthcare (6,665) paid the majority of claims.
- In terms of services, office visits had the highest number of distinct providers, followed by behavioral health visits and retail pharmacies. The number of distinct providers billing for pharmacy in medical claims or for procedures was considerably lower.
- Around 93% of healthcare in the state was provided by in-network providers, with commercial plans showing 90% of claims as in-network.
- Overall, the average cost per patient for all service types was \$1,699. However, when looking at specific service categories, Procedures and Pharmacy in Medical Claims stand out for their high costs per patient, at \$6,614 and \$6,662 respectively.
- Social workers and Counselors primarily dominate the list, accounting for about 23 % and 18.9%, respectively, followed by nurse practitioners and psychologists. Internal Medicine, Family Medicine, and Pediatrics also made significant contributions among physician specialties.

Data Source

The Maryland All-Payer Claims Database (MD-APCD) contains administrative claims data from Maryland health plans, including commercial, Medicaid, and Medicare sources, covering medical, pharmacy, and dental claims. This data provides a wide range of information about services provided, provider locations, diagnoses, procedures, allowed charges, reimbursements, and more.

For this analysis, we included claims from commercial payers, Medicaid managed care organizations, and Medicaid Fee-for-Service (FFS) for the calendar years 2021 and 2022, the most recent two years of data available. However, we did not include data for Medicare (Traditional and Medicare Advantage) and uninsured populations.

Methods

For this analysis, we referred to the Washington State Office of the Insurance Commissioner (WA OIC) gender-affirming treatment study published in 2022⁷ to identify the study population, procedures, and treatment.

Medicaid and commercially insured patients who had two or more claims within the two-year reporting period (2021–2022) with diagnoses of transsexualism (F640), gender identity disorder in adolescence or adulthood (F641), gender identity disorder in childhood (F642), gender identity disorders (F648), unspecified other (F649), and personal history of sex reassignment (Z87890) in any position on the claim were identified as transgender for this study. The diagnosis codes were obtained from the WA OIC study report, which converted ICD9 codes to ICD10 from the Proctor et al. study⁸ on identifying transgender patients in the Medicare claims dataset. Approximately 0.2% of Medicaid and commercially insured patients were identified as transgender using these methods.

GAT procedures were grouped as Behavioral Health, Office visits, Pharmacy in medical claims, and Procedures based on a list of Current Procedural Terminology (CPT) and Healthcare Common Procedure Coding System (HCPCS) codes (see Appendix 1)

GAT prescriptions were grouped as Androgens (Testosterone), Estrogens (Injectable, Oral, Topical), and Pituitary suppressants (see Appendix 2)

⁷ <https://insurance.wa.gov/sites/default/files/documents/2022-gender-affirming-treatment-report.pdf>

⁸ <https://www.cms.gov/About-CMS/Agency-Information/OMH/Downloads/Identifying-the-Transgender-Population-in-the-Medicare-Program.pdf>

To be included in the study, claims for office visits and behavioral health services needed to contain a diagnosis of gender dysphoria in any position. This requirement was necessary because the codes for office visits and behavioral health treatments are less specific, and some visits may not be related to gender dysphoria. On the other hand, claims for pharmacy and surgical services were assumed to be related to gender dysphoria and were included in the study because these claims are more specific, and the study focused specifically on transgender patients.

To provide the complete picture of gender-affirming services provided in Maryland, we included both Maryland residents and non-Maryland residents⁹ of all ages who sought care in Maryland.

A note about the Missing Data in the Commercial Component of the APCD

The Maryland APCD, like all state APCDs, cannot require private employer health plans established under the Employee Retirement and Insurance Security Act (ERISA) to submit claims due to the U.S. Supreme Court ruling in key holding for Liberty Mutual in *Gobeille v Liberty Mutual* due to the administrative burden of complying with differing state APCD requirements. The U.S. Office of Personnel Management (OPM) subsequently concluded that they would not permit health plans to submit claims for federal employees, dependents, and federal retirees to state APCDs under similar reasoning. These populations represent approximately 44 % of the commercial market in Maryland. Given the missing claim data, readers should assume that commercially insured patients receiving gender-affirming treatment are significantly undercounted. The MHCC continues to work with private employers and OPM to obtain voluntary compliance with MHCC's APCD data submission requirements

Results

Transgender Members by Payor Type, 2021-22

During 2021-22, 8,858 patients (0.22% of those covered by commercial or Medicaid plans) were identified as transgender using diagnosis codes in their claims (see Table 1). The percentage of transgender patients was slightly higher in the commercial plans (0.25%) compared to the Medicaid managed care population (0.20%). This is in contrast with the WA OIC study in which the Medicaid managed care population showed a higher percentage of transgender patients compared to the commercial population. Medicaid fee-for-service patients had a comparatively low percentage of transgender patients (0.07%) based on claims data.

⁹ Non-residents are included to the extent they were insured by a Maryland based public or private payer.

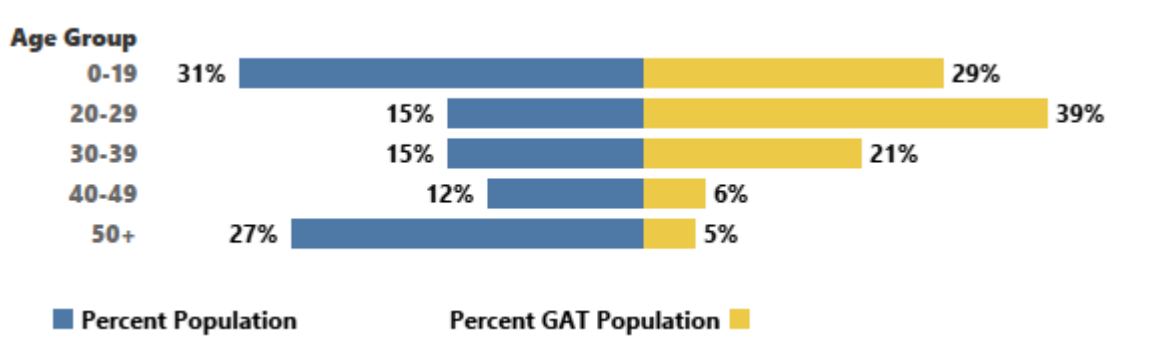
Table 1 Transgender Members by Payor Type, 2021 -22

Payor Type	Transgender Patients with Claims	Total Eligible Members	Percent of Transgender Patients
Commercial	5,567	2,268,229	0.25%
Medicaid FFS	160	241,434	0.07%
Medicaid MCO	3,131	1,582,788	0.20%
Total	8,858	4,092,451	0.22%

Transgender Members by Age, 2021-22

In comparison to the total population of eligible members with commercial and Medicaid coverage, transgender patients were younger. Although they only made up 15% of all members with commercial and Medicaid coverage, nearly 39% of transgender-identified members were in the 20–29-year-old age group (see Figure 1). On the other hand, the percentage of patients diagnosed with gender dysphoria in the claims was lower in older age groups compared to the distribution of all eligible members in those age groups. This age distribution was comparable to the results shown in the WA-OIC study. It's important to note that this reporting does not include the Medicare population, which means most adults over 65 years old are not represented in this data.

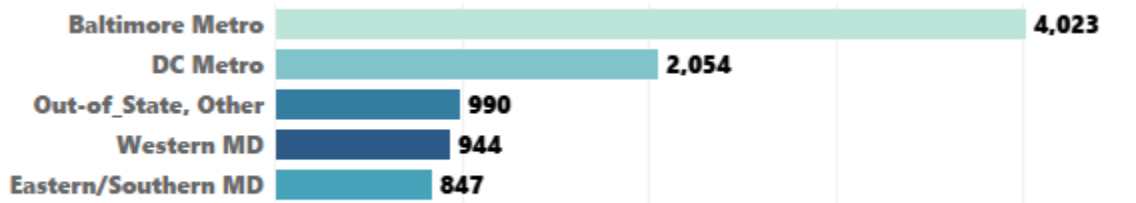
Figure 1 Transgender Members and Overall Population by Age Group, 2022 (Commercial and Medicaid)



Transgender Members by Geographic Region, 2021-22

The Baltimore Metro area, being the most populous MIA rating area, had the highest number of transgender patients (4,023 (45%)), followed by the DC Metro area (2,054(23%)), as shown in Figure 2. It is significant to note that 990 transgender patients in the MD-APCD (11% of the total) were living out of state.

Figure 2 Transgender Members by Geographic Region



Analysis of Claims & Services

During 2021-22, 69,222 claims with GAT diagnosis in any position were submitted to commercial or Medicaid plans for GAT services included in this study. Overall, 7,880 patients in Maryland received GAT services in 2021-22. These patients received care from 5,069 providers and retail pharmacies.

Gender-Affirming Treatment by Service Type and Network Type, 2021-22

The majority (90%) of transgender patients who underwent gender-affirming treatment had an office visit and received a diagnosis of gender dysphoria (as shown in Table 2). Additionally, 36% of patients received behavioral health services, while only 9% had procedure claims. For all service categories except retail pharmacy (in-network status was unavailable), over 90% of claims were billed by in-network providers.

Table 2 GAT by Service Type and Network Type, 2021 -22

Service Type	Total Claims	Total Patients	% of Total Patients	Distinct Providers*	In - Network Claims	Percent of In-Network Claims
All Services	69,222	7,880	100%	5,069	64,660	93%
Behavioral Health	36,126	2,843	36%	1,777	32,649	90%
Office Visit	25,762	7,071	90%	3,040	24,942	97%
Procedures	3,211	704	9%	252	2964	92%
Retail Pharmacy	3,027	706	9%	478	3027	100%
Pharmacy in Medical Claims	1,096	193	2%	98	1078	98%

*Providers with unique NPI were counted as distinct providers. These providers include both physicians and other providers.

Gender-Affirming Treatment by Payor Type, 2021-22

The data in Table 3 shows the payors who paid for GAT during 2021-22. CareFirst and United Healthcare had the highest number of claims on the commercial side, with 27,013 and 6,685 claims, respectively.

Around 93% of healthcare in the state was provided by in-network providers, with commercial plans showing 90% of claims as in-network. For Medicaid patients, facility claims did not include network status data and were considered in-network due to the lack of out-of-network benefits in Maryland.

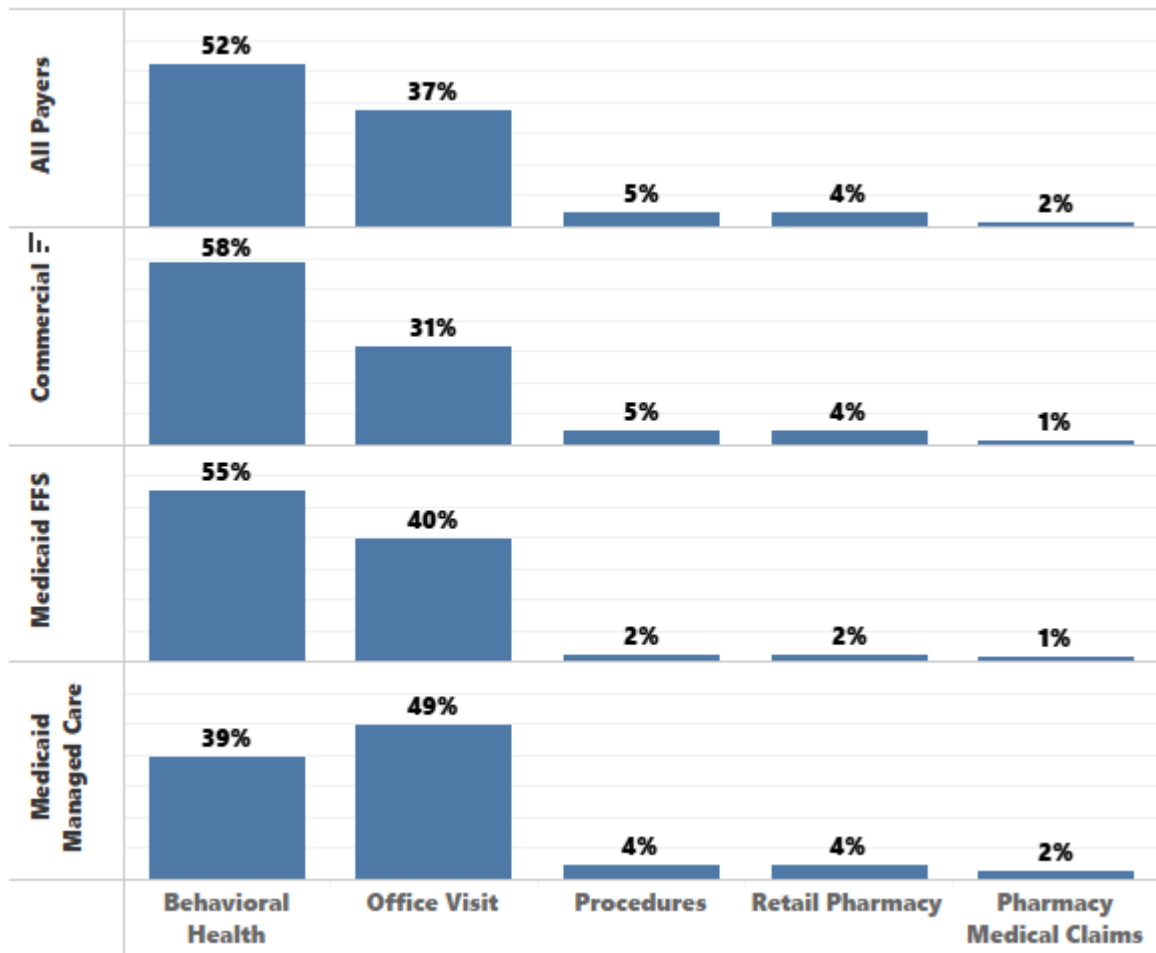
Table 3 GAT by Payor Type, 2021 -22

Carrier	Total Claims	Total Patients with Claims	Distinct Providers	In -Network Claims	Percent of In-Network Claims
Total, All Payers	69,222	7,880	5,069	64,660	93%
Commercial					
Total, Commercial	46,633	5,142	4,155	42,071	90%
CareFirst	27,013	2,743	2,072	23,805	88%
UnitedHealth care	6,685	981	1,254	6,032	90%
CIGNA	4,605	703	896	3,615	79%
Kaiser	3,933	618	471	3,612	92%
Aetna	3,300	483	596	2,801	85%
All Other	1,097	312	286	136	12%
Medicaid FFS					
Total, Medicaid FFS	698	77	94	698	100%
Medicaid MCO					
Total, Medicaid MCO	21,891	2,666	864	21,891	100%

Gender-Affirming Treatment Claims Percent by Service Type and Payor Type

In the commercial patient category, 58% of claims were for behavioral health visits, 31% were for office visits, 5% were for procedures, 4% were for prescriptions at retail pharmacies, and 1% were for pharmacy claims within medical claims. For Medicaid Managed Care patients, 39% of claims were for behavioral health visits, 49% were for office visits, 4% were for procedures, 4% were for prescriptions at retail pharmacies, and 2% were for pharmacy claims within medical claims. ([Figure 3](#)).

Figure 3 GAT Claims Percentage by Service Type and Payor Type, 2021 -22



Note: Commercial (99%) and Medicaid MCO (98%) don't sum to 100% due to rounding

Gender-Affirming Treatment by Geographic Region, 2021-22

The Baltimore Metro area provided the highest number of gender-affirming services, with the most patients served and providers practicing GAT. Nearly half of the 7,880 patients who received at least one GAT service were in the Baltimore Metro area (3,660 patients) (Table 4). Out of the 7,880 patients who received gender-affirming services, 1,452 resided in Baltimore City (Table 5).

Table 4 GAT by Geographic Region, 2021 -22

Region	Total Claims	Total Patients with Claims	Distinct Providers	In Network Claims	Percent of In-Network Claims
Baltimore Metro	31,200	3,660	2,125	30,148	97%
DC Metro	17,583	1,950	1,598	15,726	89%
Eastern/Southern MD	6,103	750	744	5,987	98%
Out-of-State/Other	6,094	1,013	1,355	4,852	80%
Western MD	8,242	861	824	7,947	96%
Total, All Areas	69,222	7,880	5,069	64,660	93%

Gender-Affirming Treatment Providers by County, 2021-22

Table 5 shows 5,069 distinct rendering providers billed for GAT services in 2021-22. Of these, 1,355 (27%) providers served out-of-state residents. The number of providers varied, with a maximum of 1,159(23%) distinct providers for Montgomery County residents and 16(0.3%) for Somerset County residents.

Table 5 GAT Providers by County, 2021 -22

County	Total Claims	Total Patients with Claims	Distinct Providers	In Network Claims	Percent of In-Network Claims
Allegany	662	61	67	659	100%
Anne Arundel	5,442	568	599	5,322	98%
Baltimore	7,996	959	781	7,727	97%
Baltimore City	10,718	1,452	864	10,302	96%
Calvert	815	85	134	781	96%
Caroline	390	40	47	390	100%
Carroll	1,411	182	220	1,384	98%
Cecil	648	73	91	608	94%
Charles	901	107	171	901	100%
Dorchester	329	42	45	329	100%
Frederick	3,902	404	453	3,646	93%
Garrett	225	20	17	224	100%
Harford	2,767	288	334	2,687	97%
Howard	4,277	476	497	4,110	96%
Kent	120	24	30	119	99%
Montgomery	11,944	1,273	1,159	10,695	90%
Prince Georges	5,639	692	692	5,031	89%
Queen Anne's	395	45	83	389	98%
Saint Mary's	417	75	87	399	96%
Somerset	108	21	16	108	100%
Talbot	297	38	56	297	100%
Washington	2,042	199	218	2,034	100%
Wicomico	1,205	140	150	1,200	100%
Worcester	478	71	90	466	97%
Non_MD_County	6,094	1,013	1,355	4,852	80%
Total, All Areas	69,222	7,880	5,069	64,660	93%

Gender-Affirming Treatment by Residence Type, 2021-22

Approximately 91% of all GAT claims were provided to Maryland residents ([Table 6](#)), and 9% were provided to out-of-state residents.

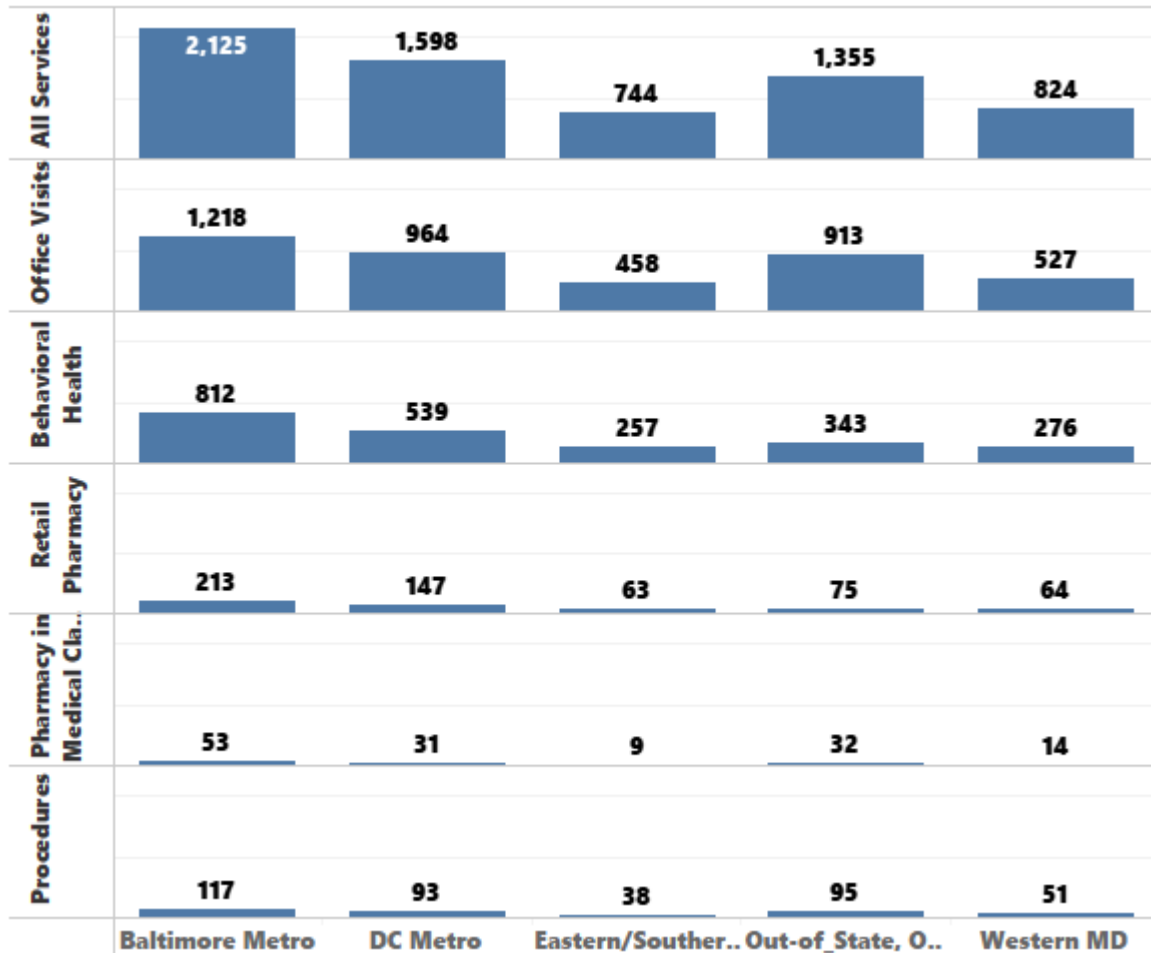
Table 6 GAT by Resident Type, 2021 -22

Residence	All Services	Behavioral Health	Office Visit	Pharmacy	Retail Pharmacy	Procedures
Maryland Resident	91%	91%	93%	91%	91%	94%
Non_MD Resident	9%	9%	7%	9%	9%	6%

Gender-Affirming Treatment Providers by Service Type by Geographic Region, 2021-22

The data in Figure 4 provides the number of healthcare providers in different areas of Maryland, categorized by the type of services they offer. In the Baltimore Metro area, there were 2,125(42%) providers offering GAT services, which was the highest number across all service categories. Conversely, the Eastern/Southern MD area had the lowest number of providers offering GAT services. Office visits were the most common type of service, followed by behavioral health visits and retail pharmacies across all rating areas. The number of providers offering pharmacy services in medical claims or procedures was much lower. While each area had at least one provider for each service category, most areas had very few providers offering procedures.

Figure 4 GAT Claims percentage by Service Type by Geographic region, 2021 -22



Gender-Affirming Treatment by service type and cost, 2021-22

The cost breakdown for GAT services is shown in Table 7. The average cost per patient for all service types was \$1,699. However, when looking at specific service categories, Procedures and Pharmacy in Medical Claims stand out for their high costs per patient, at \$6,614 and \$6,662 respectively. This suggested that these services involve either specialized treatments or expensive medications. In contrast, Office Visit and Retail Pharmacy services have much lower costs per patient, at \$442 and \$469 respectively, indicating these are more routine and likely more common healthcare services. This difference in costs highlights the complexity of healthcare spending and the importance of analyzing episodes of care, such as surgeries and hormone therapy, to understand the factors driving healthcare expenses for transgender patients.

Table 7 GAT by Service Type and Cost, 2021 -22

Service Type	Total Patients	Total Cost	Cost Per Patient	Medical Cost PMPM	Per Capita Medical Cost
All Services	7,880	\$13,390,714	\$1,699	\$0.30	\$3.59
Office Visit	7,071	\$3,127,146	\$442	\$0.07	\$0.84
Behavioral Health	2,843	\$3,990,222	\$1,404	\$0.09	\$1.07
Retail Pharmacy	706	\$331,409	\$469	\$0.01	\$0.09
Procedures	704	\$4,656,136	\$6,614	\$0.10	\$1.25
Pharmacy in Medical Claims	193	\$1,285,802	\$6,662	\$0.03	\$0.34

Gender-Affirming Treatment Claims by Provider Specialty, 2021-22

Table 8 shows a detailed breakdown of the GAT claims provided by various healthcare provider specialties in the commercial market. Social workers and Counselors primarily dominate the list, accounting for about 23 % and 18.9%, respectively, followed by nurse practitioners and psychologists. Internal Medicine, Family Medicine, and Pediatrics also made significant contributions among physician specialties. The Other Providers category included the services provided by other nonphysician specialties, indicating a diverse range of specialties beyond those listed (see Appendix 3 provider specialties included in the other provider category)

Table 8 GAT services by Provider specialty, 2021 -22

Provider Specialty	Claims Count	Claims %
Social Worker	10,722	23.0%
Counselor	8,823	18.9%
Nurse Practitioner	3,819	8.2%
Psychologist	3,429	7.4%
Internal Medicine	3,094	6.6%
Family Medicine	1,977	4.2%
Pediatrics	1,770	3.8%
Psychiatry & Neurology	1,417	3.0%
Surgery	1,058	2.3%
Plastic Surgery	871	1.9%
Obstetrics & Gynecology	668	1.4%
Registered Nurse	428	0.9%
Physician Assistant	188	0.4%
Urology	164	0.4%
Otolaryngology	118	0.3%
Behavioral Analyst	80	0.2%
Clinical Neuropsychologist	76	0.2%
Emergency Medicine	24	0.1%
Hospitalist	21	0.0%
Radiology	19	0.0%
Anesthesiology	16	0.0%
Dermatology	14	0.0%
General Practice	13	0.0%
Orthopedic Surgery	7	0.0%
Oral & Maxillofacial Surgery	4	0.0%
Colon & Rectal Surgery	2	0.0%
Neurological Surgery	1	0.0%
Medical Genetics	1	0.0%
Other Providers	7809	16.7%
All Specialties	46,633	100.0%

Limitation

The study had some limitations. It included providers with minimal encounters with transgender patients. It did not include data from self-insured ERISA and Federal Employee Health Benefit (FEHB) health plans due to federal decisions in 2016 (SCOTUS court ruling — *Gobeille vs. Liberty Mutual*) and in 2019 (OPM barring payers from reporting FEHB data to APCDs). These exclusions comprised about 44% (1.68 million members) of the MCDB's privately insured population. Additionally, Medicare and uninsured population data were also excluded from this study.

Conclusion

The analysis of MD-APCD data for 2021 and 2022 has provided significant insights into the landscape of gender-affirming treatment procedures in Maryland. Despite the study's limitations, it represents an important step forward in understanding GAT access in the state. Future analyses focusing on provider specialties and the cost and utilization of procedures and hormone therapy by transgender patients will be crucial in shedding more light on the healthcare needs of the transgender population in Maryland. While the data analyzed cannot measure the demand for gender-affirming care services, it does offer valuable information about the services provided. This information can be pivotal in informing policies and interventions aimed at improving access to gender-affirming care for transgender individuals in Maryland.

Appendix 1. Gender Affirming Treatment Procedures by CPT/HCPCS Code

Procedure Code	Description
Behavioral Health	
S9480	INTENSIVE OP PSYCHIATRIC SERVICES PER DIEM
90785	PSYCHOTHERAPY COMPLEX INTERACTIVE
90791	PSYCHIATRIC DIAGNOSTIC EVALUATION
90792	PSYCHIATRIC DIAGNOSTIC EVAL W/MEDICAL SERVICES
90832	PSYCHOTHERAPY W/PATIENT 30 MINUTES
90833	PSYCHOTHERAPY W/PATIENT W/E&M SRVCS 30 MIN
90834	PSYCHOTHERAPY W/PATIENT 45 MINUTES
90836	PSYCHOTHERAPY W/PATIENT W/E&M SRVCS 45 MIN
90837	PSYCHOTHERAPY W/PATIENT 60 MINUTES
90838	PSYCHOTHERAPY W/PATIENT W/E&M SRVCS 60 MIN
90839	PSYCHOTHERAPY FOR CRISIS INITIAL 60 MINUTES
90846	FAMILY PSYCHOTHERAPY W/O PATIENT PRESENT 50 MINS
90847	FAMILY PSYCHOTHERAPY W/PATIENT PRESENT 50 MINS
90849	MULTIPLE FAMILY GROUP PSYCHOTHERAPY
90853	GROUP PSYCHOTHERAPY
92524	BEHAVIORAL & QUALIT ANALYSIS VOICE AND RESONANCE
96130	PSYCHOLOGICAL TST EVAL SVC PHYS/QHP FIRST HOUR
96131	PSYCHOLOGICAL TST EVAL SVC PHYS/QHP EA ADDL HOUR
96132	NEUROPSYCHOLOGICAL TST EVAL PHYS/QHP 1ST HOUR
96136	PSYL/NRPSYCL TST PHYS/QHP 2+ TST 1ST 30 MIN
96137	PSYCL/NRPSYCL TST PHYS/QHP 2+ TST EA ADDL 30 MIN
96156	HEALTH BEHAVIOR ASSESSMENT/RE-ASSESSMENT
Office Visit	
99384	INITIAL PREVENTIVE MEDICINE NEW PT AGE 12-17 YR
99201	OFFICE OUTPATIENT NEW 10 MINUTES
99202	OFFICE OUTPATIENT NEW 20 MINUTES
99203	OFFICE OUTPATIENT NEW 30 MINUTES
99204	OFFICE OUTPATIENT NEW 45 MINUTES
99205	OFFICE OUTPATIENT NEW 60 MINUTES
99211	OFFICE OUTPATIENT VISIT 5 MINUTES
99212	OFFICE OUTPATIENT VISIT 10 MINUTES
99213	OFFICE OUTPATIENT VISIT 15 MINUTES
99214	OFFICE OUTPATIENT VISIT 25 MINUTES
99215	OFFICE OUTPATIENT VISIT 40 MINUTES

Procedure Code	Description
99242	OFFICE CONSULTATION NEW/ESTAB PATIENT 30 MIN
99243	OFFICE CONSULTATION NEW/ESTAB PATIENT 40 MIN
99244	OFFICE CONSULTATION NEW/ESTAB PATIENT 60 MIN
99245	OFFICE CONSULTATION NEW/ESTAB PATIENT 80 MIN
99383	INITIAL PREVENTIVE MEDICINE NEW PT AGE 5-11 YRS
99385	INITIAL PREVENTIVE MEDICINE NEW PT AGE 18-39YRS
99386	INITIAL PREVENTIVE MEDICINE NEW PATIENT 40-64YRS
99391	PERIODIC PREVENTIVE MED ESTABLISHED PATIENT <1Y
99392	PERIODIC PREVENTIVE MED EST PATIENT 1-4YRS
99393	PERIODIC PREVENTIVE MED EST PATIENT 5-11YRS
99395	PERIODIC PREVENTIVE MED EST PATIENT 18-39 YRS
99396	PERIODIC PREVENTIVE MED EST PATIENT 40-64YRS
99441	PHYS/QHP TELEPHONE EVALUATION 5-10 MIN
99442	PHYS/QHP TELEPHONE EVALUATION 11-20 MIN
99443	PHYS/QHP TELEPHONE EVALUATION 21-30 MIN
Pharmacy in Medical Claims	
J9225	HISTRELIN IMPLANT VANTAS 50 MG
11980	SUBCUTANEOUS HORMONE PELLETT IMPLANTATION
J1000	INJECTION DEPO-ESTRADIOL CYPIONATE UP TO 5 MG
J1071	INJECTION TESTOSTERONE CYPIONATE 1 MG
J1380	INJECTION ESTRADIOL VALERATE UP TO 10 MG
J1950	INJECTION LEUPROLIDE ACETATE PER 3.75 MG
J9217	LEUPROLIDE ACETATE 7.5 MG
S0189	TESTOSTERONE PELLETT 75 MG
Procedures	
15115	EPIDERMAL AGRFT F/S/N/H/F/G/M/D GT 1ST 100 CM/<
15200	FTH/GFT FREE W/DIRECT CLOSURE TRUNK 20 CM/<
15201	FTH/GFT FR W/DIR CLSR TRNK EA ADDL 20 CM/<
15240	FTH/GFT FR W/DIR CLSR F/C/C/M/N/AX/G/H/F 20 CM/<
15241	FTH/GT FR W/DIR CLSR F/C/C/M/N/AX/G/H/F EA20CM/<
15750	FLAP NEUROVASCULAR PEDICLE
15757	FREE SKIN FLAP W/MICROVASCULAR ANASTOMOSIS
15824	RHYTIDECTOMY FOREHEAD
15877	SUCTION ASSISTED LIPECTOMY TRUNK
17380	ELECTROLYSIS EPILATION EACH 30 MINUTES
17999	UNLISTED PX SKIN MUC MEMBRANE & SUBQ TISSUE

Procedure Code	Description
19303	MASTECTOMY SIMPLE COMPLETE
19304	MASTECTOMY SUBCUTANEOUS
19318	REDUCTION MAMMAPLASTY
19325	MAMMAPLASTY AUGMENTATION W/PROSTHETIC IMPLANT
19350	NIPPLE/AREOLA RECONSTRUCTION
19499	UNLISTED PROCEDURE BREAST
21122	GENIOPLASTY 2/> SLIDING OSTEOTOMIES
21139	RDCTJ FHD CNTRG & SETBACK ANT FRONTAL SINUS WALL
21209	OSTEOPLASTY FACIAL BONES REDUCTION
21270	MALAR AUGMENTATION PROSTHETIC MATERIAL
21296	REDUCTION MASSETER MUSCLE & BONE INTRAORAL
30410	RHINP PRIM COMPLETE XTRNL PARTS
31599	UNLISTED PROCEDURE LARYNX
31899	UNLISTED PROCEDURE TRACHEA BRONCHI
53410	URETHROPLASTY 1 STG RECNST MALE ANTERIOR URETHRA
53430	URETHROPLASTY RCNSTJ FEMALE URETHRA
54120	AMPUTATION PENIS PARTIAL
54125	AMPUTATION PENIS COMPLETE
54520	ORCHIECTOMY SIMPLE SCROTAL/INGUINAL APPROACH
54660	INSJ TESTICULAR PROSTH SEPARATE PROCEDURE
55180	SCROTOPLASTY COMPLICATED
55970	INTERSEX SURG MALE FEMALE
55980	INTERSEX SURG FEMALE MALE
56800	PLASTIC REPAIR INTROITUS
56805	CLITOROPLASTY INTERSEX STATE
57110	VAGINECTOMY COMPLETE REMOVAL VAGINAL WALL
57292	CONSTRUCTION ARTIFICIAL VAGINA W/GRAFT
57295	REVJ/RMVL PROSTHETIC VAGINAL GRAFT VAGINAL APP
57296	REVJ W/RMVL PROSTHETIC VAGINAL GRAFT ABDML APPR
57335	VAGINOPLASTY INTERSEX STATE
58552	LAPS W/VAG HYSTERECT 250 GM/&RMVL TUBE&/OVARIES
58999	UNLISTED PX FEMALE GENITAL SYSTEM NONOBSTETRICAL
64999	UNLISTED PROCEDURE NERVOUS SYSTEM
C1789	PROSTHESIS BREAST
L8600	IMPLANTABLE BREAST PROSTHESIS SILICONE OR EQUAL
L8699	PROSTHETIC IMPLANT NOT OTHERWISE SPECIFIED

Appendix 2. Endocrine & Metabolic Agents Included in Retail Pharmacy Reporting

Drug Name	NDC Code
ANDROGENS TESTOSTERONE	
ANDRODERM	23599230, 23599204, 23599060, 23599002
TESTONE CIK	76420065001
ANDROGEL	51842501, 51846201, 51846230, 51842530, 51846212, 51845030, 51846231, 51845001, 35356037605
TESTOPEL	66887000410, 66887000420
ANDROGEL PUMP	17139056288, 51846233
TESTOSTERONE	45802075401, 591292530, 591352426, 64380015202, 591211481, 832112089, 63629931001, 45802061001, 591292625, 591292418, 68382036211, 21922001902, 49884041848, 72627220209, 68382036214, 72627220309, 45802028139, 64380015101, 24979007815, 45802036602, 69339015810, 63629212401, 16714096801, 63629235201, 69238101302, 68180094111, 16714096802, 16714096901, 72627220001, 72627220109, 45802011665, 64380015201, 591292118, 63629845501, 591321730, 68382036215, 45802028103, 591352430, 72627220201, 591292630, 832112005, 49884051072, 72627220009, 43598030488, 64380015102, 832112140, 591321630, 832112035, 72627220301, 591292532, 68180094311, 45802011639, 832112065, 254101263, 24979013026, 591321726, 69097036344, 49884051063, 16714096902, 63629958501, 16714096701, 591292102, 49884041872, 45802036665, 72627220101, 70700011221, 68382036212, 591236360, 603783188, 68382036213, 832112142, 254101211, 591321617
AVEED	67979051143
TESTOSTERONE CYPIONATE	591322354, 591322379
AXIRON	5486864060
TESTOSTERONE ENANTHATE	1439750
DEPO-TESTOSTERONE	63874106101, 9034702, 9008510, 9041701, 9008601, 9041702, 9008610

Drug Name	NDC Code
TESTOSTERONE PUMP	2497907815
FORTESTA	63481018316
Drug Name	NDC Code
ANDROGENS TESTOSTERONE	
TESTOSTERONE TOPICAL SOLUTION	45802075401, 591292530, 591352426, 64380015202, 591211481, 832112089, 63629931001, 45802061001, 591292625, 591292418, 68382036211, 21922001902, 49884041848, 72627220209, 68382036214, 72627220309, 45802028139, 64380015101, 24979007815, 45802036602, 69339015810, 63629212401, 16714096801, 63629235201, 69238101302, 68180094111, 16714096802, 16714096901, 72627220001, 72627220109, 45802011665, 64380015201, 591292118, 63629845501, 591321730, 68382036215, 45802028103, 591352430, 72627220201, 591292630, 832112005, 49884051072, 72627220009, 43598030488, 64380015102, 832112140, 591321630, 832112035, 72627220301, 591292532, 68180094311, 45802011639, 832112065, 254101263, 24979013026, 591321726, 69097036344, 49884051063, 16714096902, 63629958501, 16714096701, 591292102, 49884041872, 45802036665, 72627220101, 70700011221, 68382036212, 591236360, 603783188, 68382036213, 832112142, 254101211, 591321617
JATENZO	69087019812, 69087015812, 69087023712
VOGELXO	245087189, 245087135, 245087105, 245087165
NATESTO	69654023901, 42667551101
VOGELXO PUMP	245087240, 245087242
TESTIM	66887000105
XYOSTED	54436027502, 54436020002, 54436025004, 54436020004, 54436027504, 54436025002
ESTROGENS INJECTABLE	
DELESTROGEN	42023011201, 42023011001, 42023011101

Drug Name	NDC Code
ESTRADIOL VALERATE	143929001, 51552088804, 38779056805, 70700027522, 517042001, 70700027422, 49452279102, 574087205, 71052066725, 38779056804, 70700027322, 62991166203, 62991166204, 38779056803, 517044001, 49452279104, 51552088802, 62991166202, 49452279103, 143928901, 574087005, 51927169800, 49452279101, 143929101, 38779056806, 51552088801
DEPO-ESTRADIOL	9027101
PREMARIN	50090016705, 46110481, 43353068860, 33358029530, 52959022330, 52959022300, 46110091, 66267017430, 43353068760, 46110491, 52959022200, 46074905, 46110381, 46110181, 50090185303, 46110081, 46110291, 46087221, 46110281
Drug Name	NDC Code
ESTROGENS ORAL	
ESTRACE	430072024, 430072224, 50090232100, 430072124, 430375414
MENEST	61570007401, 61570007550, 61570007201, 61570007301

Drug Name	NDC Code
ESTRADIOL	93322397, 60592020611, 68462071176, 68968341008, 46144040005, 63629880401, 45802045230, 42806008705, 378335299, 62991104903, 47781020604, 555088602, 68788848103, 72189050290, 13811009132, 68968342508, 47781010444, 52959032300, 72603024201, 395654056, 68788848106, 50090170402, 24658070401, 55289060321, 781713458, 68788733209, 50090170400, 93322308, 45802057330, 50090635902, 70710119108, 781715640, 378462116, 70954053420, 378145205, 378464116, 70954056410, 378335216, 378336199, 378462216, 13811009432, 378464126, 63275990009, 68788705401, 378464326, 47781020611, 555088604, 58118088603, 72189018360, 395654062, 51862033301, 50090188200, 43063070690, 68788837408, 378335116, 63275998701, 72603024401, 63275998702, 781716758, 68968345008, 51862033305, 72603024330, 72603024101, 42806008905, 43063071790, 50090188201, 68788789203, 70700014335, 71335079702, 68788789209, 60592020625, 62991104901, 42806008801, 72627220409, 50090549401, 378464026, 781712258, 781711954, 45802013430, 378464016, 13811009032, 70710119301, 24658070301, 68462071182, 13811009301, 781713658, 378461926, 50090681100, 24658070405, 70954056520, 13811009001, 378877035, 68968347508, 781710458, 63275998705, 13811009201, 70954053120, 68788705403, 781716783, 68788705406, 555089902, 68788796109, 66993000210, 63187074190, 68968343708, 378145805, 72789029990, 50090684700, 33261066730, 33261066760, 55289076130, 63629871301, 46144040001, 42806008701, 68968343701, 72603024501, 51927177800, 781713454, 63187074130, 51927360900, 55289060307, 63275990008, 70700014434, 378462326, 60429083501, 68788733206, 60429083401, 378462126, 68788710206, 781712958, 68788848109, 50090636300, 378335016, 70954053020, 50090194102, 378461916, 70710119501, 68788848101, 115151866, 378336016, 72189050260, 378145401, 42291042642, 50090549400, 50090262400, 70710119508, 42806008805, 70934054130, 33261076301, 68968347501, 50090249000, 24658070305, 60429083301, 68788733203, 47781020504, 781714483, 70954053220, 72189019890, 68788789201, 378462226, 68968342501, 781713858, 55289060330, 45802009735, 50090364500, 68462071188, 378464226, 66267009360, 70700019535, 378145405, 68788733201, 55289060390, 781713654, 33261071415, 68968345001, 51862033201, 70954056610, 51862033405, 555088704, 72603024530, 60592020601, 93354143,

Drug Name	NDC Code
	43063070630, 45802020230, 68788705409, 50090187600, 378464216, 75839015510, 72627220401, 63629880301, 70710119201, 50090194100, 63629880201, 38779226109, 781714458, 13811009401, 38779226104, 33261071460, 378145801, 50090332700, 63629865401, 68788796106, 55289076101, 68788710203, 70710119208, 378464316, 68788789206, 72603024301, 378334916, 68788796101, 68968341001, 63275990005, 70700014535, 378336116, 64205048890, 72603024230, 781712983, 33261091101, 781710454, 378462316, 13811009332, 70700014435, 378464416, 70954056510, 70934039330, 64205004830, 781713358, 70954053320, 62991104902, 60592020622, 70710119308, 55289076190, 33261071430, 60429083505, 42806008901, 781715658, 13811009101, 378145877, 13811009232, 64205004890, 378335199, 72189050890, 378335099, 70710119101, 378462026, 68788796103, 63275998704, 33261066790, 70700019435, 378462016, 50090635900, 43063071730, 68462071171, 70710119408, 378145201, 68788710201, 781713354, 70710119401, 64205048830, 70954056620, 63275990002, 51862033401, 781713883, 68788842708, 781715683, 781711958, 24658070201, 781712254, 378464426, 378336099, 68788710209, 60429083405, 72603024430, 62991104904, 555088702, 47781020704, 72189018390, 45802031030, 61919019830, 378334999, 72603024130, 38779226105, 52959032330, 63275990004
PREMARIN	50090016705, 46110481, 43353068860, 33358029530, 52959022330, 52959022300, 46110091, 66267017430, 43353068760, 46110491, 50090185303, 46074905, 46110291, 46110181, 52959022200, 46110081, 46110381, 46087221, 46110281
Drug_Name	NDC Code
ESTROGENS TOPICAL	

Drug Name	NDC Code
ALORA	23588811, 23588502, 52544047154, 52544047108, 23588615, 23588717, 23588801, 23588707, 23588512, 23588605
ESTROGEL	17139061740
CLIMARA	50419045301, 50419045204, 50419045604, 50419045201, 50419045101, 50419045901, 50419045404, 50419045904, 50419045601, 50419045304, 50419045401, 50419045104
EVAMIST	574206727, 574206700
DIVIGEL	68025008330, 68025006730, 68025008630, 68025006630, 68025006530
LYLLANA	65162022804, 65162015004, 65162014808, 65162012604, 65162012608, 65162015008, 65162022808, 65162014908, 65162014904, 65162014804
DOTTI	65162099508, 72162203402, 65162099504, 65162099704, 72162203302, 65162098908, 72162203602, 65162099204, 65162099308, 65162099708, 72162203502, 65162099304, 65162099208, 65162098904, 72162203202
MENOSTAR	50419045504
ELESTRIN	37480170
MINIVELLE	68968665008, 68968662508, 68968662501, 68968661008, 68968661001, 68968663708, 68968667501, 68968665001, 68968663701, 68968667508
ESTRADERM	378334916, 378334999, 378335016, 378335099, 378335116, 378335199, 378335216, 378335299, 378336016, 378336099, 378336116, 378336199
VIVELLE	78034342, 78034345

Drug Name	NDC Code
ESTRADIOL	60592020611, 781712958, 68968341008, 50090636300, 63629880401, 70954053020, 42806008705, 378461916, 62991104903, 68788848101, 555088602, 378336016, 72189050290, 378145401, 68968342508, 50090549400, 52959032300, 70710119508, 395654056, 70934054130, 50090170402, 68968347501, 55289060321, 24658070305, 68788733209, 68788733203, 93322308, 781714483, 50090635902, 72189019890, 781715640, 378462226, 70954053420, 781713858, 378464116, 45802009735, 378335216, 68462071188, 378462216, 66267009360, 378464126, 378145405, 68788705401, 55289060390, 47781020611, 33261071415, 58118088603, 51862033201, 395654062, 51862033405, 50090188200, 72603024530, 68788837408, 93354143, 63275998701, 45802020230, 63275998702, 50090187600, 68968345008, 75839015510, 72603024330, 63629880301, 42806008905, 50090194100, 50090188201, 38779226109, 70700014335, 13811009401, 68788789209, 33261071460, 62991104901, 50090332700, 72627220409, 68788796106, 378464026, 68788710203, 781711954, 378464316, 378464016, 72603024301, 70710119301, 68788796101, 68462071182, 63275990005, 781713658, 378336116, 50090681100, 72603024230, 70954056520, 33261091101, 378877035, 378462316, 781710458, 70700014435, 13811009201, 70954056510, 68788705403, 64205004830, 68788705406, 70954053320, 68788796109, 60592020622, 63187074190, 55289076190, 378145805, 60429083505, 50090684700, 781715658, 33261066760, 378145877, 63629871301, 64205004890, 42806008701, 72189050890, 72603024501, 70710119101, 781713454, 68788796103, 51927360900, 33261066790, 63275990008, 378462016, 378462326, 43063071730, 68788733206, 70710119408, 378462126, 68788710201, 55289060307, 70710119401, 70700014434, 70954056620, 60429083501, 51862033401, 60429083401, 68788842708, 68788710206, 781711958, 68788848109, 781712254, 378335016, 378336099, 50090194102, 68788710209, 70710119501, 60429083405, 115151866, 72603024430, 72189050260, 62991104904, 42291042642, 555088702, 50090262400, 47781020704, 42806008805, 72189018390, 33261076301, 45802031030, 50090249000, 61919019830, 60429083301, 378334999, 47781020504, 72603024130, 70954053220, 38779226105, 68788789201, 52959032330, 68968342501, 63275990004, 55289060330, 93322397, 50090364500, 68462071176, 378464226, 46144040005, 70700019535, 45802045230, 68788733201, 378335299, 781713654,

Drug Name	NDC Code
	47781020604, 68968345001, 68788848103, 70954056610, 13811009132, 555088704, 47781010444, 60592020601, 72603024201, 43063070630, 68788848106, 68788705409, 24658070401, 378464216, 781713458, 72627220401, 50090170400, 70710119201, 45802057330, 63629880201, 70710119108, 781714458, 378462116, 38779226104, 378145205, 378145801, 70954056410, 63629865401, 378336199, 55289076101, 13811009432, 70710119208, 63275990009, 68788789206, 378464326, 378334916, 555088604, 68968341001, 72189018360, 70700014535, 51862033301, 64205048890, 43063070690, 781712983, 378335116, 781710454, 72603024401, 13811009332, 781716758, 378464416, 51862033305, 70934039330, 72603024101, 781713358, 43063071790, 62991104902, 68788789203, 70710119308, 71335079702, 33261071430, 60592020625, 42806008901, 42806008801, 13811009101, 50090549401, 13811009232, 781712258, 378335199, 45802013430, 378335099, 13811009032, 378462026, 24658070301, 63275998704, 13811009301, 70700019435, 378461926, 50090635900, 24658070405, 68462071171, 13811009001, 378145201, 68968347508, 781713354, 63275998705, 64205048830, 70954053120, 63275990002, 781716783, 781713883, 555089902, 781715683, 66993000210, 24658070201, 68968343708, 378464426, 72789029990, 33261066730, 55289076130, 46144040001, 68968343701, 51927177800, 63187074130
VIVELLE-DOT	78034562, 78034442, 78034362, 78034662, 78036545, 78036542, 78034345, 78034342, 78034645, 78034462, 78034642, 78034445, 78034545, 78036562, 78034542
Drug Name	NDC Code
PITUITARY SUPPRESSANTS	
ELIGARD	62935046150, 62935022305, 62935075375, 62935030330, 62935075680, 62935045345, 62935022710

Drug Name	NDC Code
ONCOLOGY AGENTS : LHRH ANALOGS INJECTABLE	781300642, 781400332
FENSOLVI	62935016360, 62935015350
SUPPRELIN LA	67979000201
LEUPROLIDE ACETATE	55150047801, 781400332, 72664061128, 70121253706, 16714057201, 63629882101, 46144080001, 38779262906, 38779262905, 38779262901, 51927453500, 57246000105, 47335093640, 46144080005, 69097090950
SYNAREL	25016608
LEUPROLIDE ACETATE/BUPIVACAINE HYDROCHLORIDE	71283053502
TRELSTAR DEPOT	7467659020, 7467659021, 7467659040, 7467659041, 7467659060, 7467659061
LUPANETA PACK	74105205, 74105305
TRELSTAR DEPOT MIXJECT	74676590201, 23590203, 74676590601, 23590411, 74676590401, 74676590200, 74676590400, 23590622, 23590204, 74676590600, 23590412, 23590623
LUPRON DEPOT	74364103, 74364203
TRELSTAR LA	525440156
LUPRON DEPOT (1- MONTH)	74334603, 74366303
TRELSTAR LA MIXJECT	52544015602
LUPRON DEPOT (3- MONTH)	74368303
TRELSTAR MIXJECT	525440156
LUPRON DEPOT (4- MONTH)	74347303
TRIPTODUR	24338015020
LUPRON DEPOT (6- MONTH)	74228203, 74244003, 74210803
VANTAS	67979050001
LUPRON DEPOT-PED (1-MONTH)	74377903, 74969403
ZOLADEX	70720095036, 70720095130, 50090346600

Drug Name	NDC Code
LUPRON DEPOT-PED (3-MONTH)	74357501

Appendix 3. Provider specialties included in the Other Provider category

Provider Specialty	Claims Count
Other Providers	1,911
Pharmacy	1,167
Durable Medical Equipment & Medical	906
Student in an Organized Health Care	840
Marriage & Family Therapist	729
General Acute Care Hospital	615
Clinic/Center	416
Chronic Disease Hospital	226
Community/Behavioral Health	223
Psychiatric Unit	192
Specialist	181
Art Therapist	134
Special Hospital	54
Clinical Medical Laboratory	43
Advanced Practice Midwife	29
Dentist	21
Speech-Language Pathologist	18
Ambulance	16
Physiological Laboratory	12
Case Manager/Care Coordinator	10
Department of Veterans Affairs (VA)	9
Home Health	7
Dietitian, Registered	7
Midwife	7
Legal Medicine	5
Psychiatric Residential Treatment F	5
Rehabilitation Unit	4
Psychoanalyst	4
Behavior Technician	3
Nutritionist	3
Specialist/Technologist, Other	2

Provider Specialty	Claims Count
Community Health Worker	2
Hospice Care, Community Based	1
Psychiatric Hospital	1
Hearing Instrument Specialist	1
Podiatrist	1
Occupational Therapist	1
Nursing Care	1
Military/U.S. Coast Guard Pharmacy	1
Technician	1

Acknowledgments

This report on Gender Affirmation Treatment, 2021-22, was authored by Shankar Mesta, MBBS, MPH, with programming support from Audrey Clement, PhD, at the Center for Analysis and Information Systems of the Maryland Health Care Commission.

Questions about the report should be directed to Shankar Mesta at shankar.mesta@maryland.gov

The Maryland Health Care Commission is an independent regulatory commission administratively located within the Maryland Department of Health.



4160 Patterson Avenue
Baltimore, MD 21215

mhcc.maryland.gov