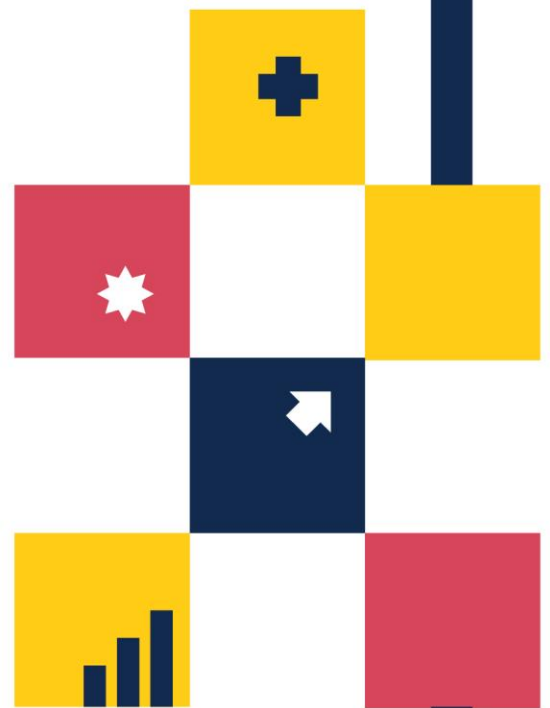


# FY2020 Maryland Health Care Commission Hospice Utilization Report





**Ben Steffen, Executive Director**  
Maryland Health Care Commission

**Andrew N. Pollak, MD, Chairman**  
Professor and Chair, Department of Orthopaedics  
University of Maryland School of Medicine  
Chief of Orthopaedics, University of Maryland Medical System

---

**Bimbola Akintade, PhD**  
University of Maryland School of Nursing  
Associate Professor for the School of Nursing

---

**Arun Bhandari, MD**  
Chesapeake Oncology Hematology  
Associates, PA

---

**Cassandra Boyer, BA**  
Business Operations Manager  
Enterprise Information Systems Directorate  
US Army Communications Electronics Command

---

**Marcia Boyle, MS**  
Founder  
Immune Deficiency Foundation

---

**Trupti N. Brahmbhatt, PhD**  
Senior Policy Researcher  
Rand Corporation

---

**Tinisha Cheatham, MD**  
Physician in Chief of the Mid-Atlantic  
Permanente Medical Group

---

**Martin L. “Chip” Doordan, MHA**  
Retired Chief Executive Officer  
Anne Arundel Medical Center

---

**Mark T. Jensen, Esq.**  
Partner  
Bowie & Jensen, LLC

---

**Jeffrey Metz, MBA, LNHA**  
President and Administrator  
Egle Nursing and Rehab Center

---

**Gerard S. O’Connor, MD**  
General Surgeon in Private Practice

---

**Michael J. O’Grady, PhD**  
Principal, Health Policy LLC, and  
Senior Fellow, National Opinion Research Ctr  
(NORC) at the University of Chicago

---

**Randolph S. Sergent, Esq**  
Vice Chair, Maryland Health Care Commission  
Vice President and Deputy General Counsel  
CareFirst BlueCross BlueShield

---

**Marcus L. Wang, Esq**  
Co-Founder, President and General Manager  
ZytoGen Global Genetics Institute

---

**Karrie M. Wood**  
Executive Vice-President  
Community Bank of the Chesapeake

---

# Table of Contents

Annual Maryland Health Care Commission Hospice Survey .....	1
2020 Hospice Utilization Report .....	1
Hospice Utilization .....	2
Hospice Location of Services .....	4
Hospice Non-Death Discharges .....	8
Diagnoses at Admission .....	11
Utilization by Race .....	12
Race Trends Over Time .....	15
African American Hospice Patients Served by Region Over Time.....	16
Outreach to African Americans to Increase Hospice Use .....	16



## **Annual Maryland Health Care Commission Hospice Survey**

Each year, the Maryland Health Care Commission (MHCC) administers a survey to all licensed hospices in the state of Maryland. The survey is administered by the Center for Health Care Facilities Planning and Development at MHCC, and the data are analyzed by the Center for Quality Measurement and Reporting. Hospices are required to supply information about the patients they served and all spending.

Data sources include the FY2013 to FY2020 Hospice Surveys and the Annual Vital Statistics Report years FY2018 to FY2020 published by the Maryland Department of Health. Hospice utilization tables are constructed each year by the Center for Quality Measurement and Reporting and posted on the main MHCC website and the [Maryland Quality Reporting](#) consumer website. The FY2020 data are accessible on the Maryland Health Care Commission's [website](#). Maryland Vital Statistics Reports can be downloaded on their [website](#).

## **2020 Hospice Utilization Report**

The report includes the following graphs and charts:

- Table: Maryland Hospice Usage Rates, FY2020
- Graph: Maryland Hospice Use Rates by Maryland Region, FY2020
- Table: Hospice Patients Served in Maryland by Location of Services, FY2020
- Graph: Hospice Patients Served in Maryland by Location of Services, FY 2020
- Table: Hospice Patients Served in Maryland: Non-Death Discharges, FY2020
- Graph: Hospice Patients Served in Maryland: Non-Death Discharges, FY2020
- Graph: Hospice Patients Served in Maryland by Primary Diagnosis, FY2020
- Graph: Hospice Patients Served in Maryland by Race, FY2020
- Table: Hospice Patients Served in Maryland by Region and Race, FY2020
- Graph: Hospice Patients Served by Region and Race, FY2020
- Graph: Maryland Hospice Patients Served by Race, FY2013-FY2020
- Graph: African American Hospice Patients Served by Region, FY2013-FY2020



## Hospice Utilization

The hospice use rate in FY2018 was 43.5%<sup>1</sup> for the state of Maryland and increased slightly to 45.3% in FY2019 but decreased in FY2020 to 41.2%. In the United States, the hospice use rate was 50.6% in 2018, 51.6% in 2019, and decreased slightly in 2020 to 47.8%.<sup>2</sup>

In Maryland in FY2018, the highest hospice use rates were in the Baltimore metro area (46.2%) and the Northwest (45.5%) regions of the state. The lowest use rates were in the National Capital (39.1%) and the Southern (38.2%) regions of the state. The Eastern Shore region utilization rate was in the middle at 42.0%. In FY2019, the distribution of use rates across the state remained the same with slight fluctuations. The highest use rates were in the Baltimore metro area (48.8%) and the Northwest (48.6%) regions of the state. The lowest use rates were in the National Capital (39.1%) and the Southern (37.9%) regions of the state. The Eastern Shore region use rate was in the middle at 44.6%. In FY2020, the patterns remained the same, but there were larger decreases than in past years. The largest use rates remained in the Baltimore metro area (45.2%) and the Northwest region (44.2%). The lowest use rates were in the National Capital (35.5%) and Southern (32.9%) regions, and the Eastern Shore remained in the middle at 38.3%. All 5 regions experienced a large decrease in hospice use when compared to FY2019.

---

<sup>1</sup> The hospice use rate is calculated by dividing the number of hospice deaths by the number of deaths of individuals aged 35 and older.

<sup>2</sup> Source: MedPac Report to the Congress: Medicare Payment Policy, March 2022. Please note that MedPac calculates the hospice use rate for only Medicare decedents while the Maryland Health Care Commission calculates the hospice use rate using only patients 35 years of age or older.



# Maryland Hospice Use Rates, FY2020

(Hospice Deaths/Ages ≥ 35 Total Deaths)

Region	County	Maryland Deaths, 2020				Hospice Deaths, 2020	
		Age ≤ 34 (or Age Unknown)	Ages ≥ 35	All Ages	% Age ≥ 35	Hospice Deaths	Hospice Use Rate (Hospice Deaths/Ages ≥ 35 Deaths)
<b>Baltimore Metro</b>		<b>1,438</b>	<b>27,791</b>	<b>29,229</b>	<b>95.1%</b>	<b>12,562</b>	<b>45.2%</b>
	Anne Arundel	238	4,790	5,028	95.3%	2,373	49.5%
	Baltimore County	386	9,525	9,911	96.1%	5,046	53.0%
	Baltimore City	568	7,228	7,796	92.7%	1,971	27.3%
	Carroll	51	1,791	1,842	97.2%	1,087	60.7%
	Harford	94	2,481	2,575	96.3%	1,226	49.4%
	Howard	101	1,976	2,077	95.1%	859	43.5%
<b>Eastern Shore</b>		<b>193</b>	<b>5,509</b>	<b>5,702</b>	<b>96.6%</b>	<b>2,110</b>	<b>38.3%</b>
	Caroline	15	393	408	96.3%	127	32.3%
	Cecil	55	1,165	1,220	95.5%	334	28.7%
	Dorchester	15	431	446	96.6%	127	29.5%
	Kent	9	314	323	97.2%	145	46.2%
	Queen Anne's	16	445	461	96.5%	208	46.7%
	Somerset	9	342	351	97.4%	95	27.8%
	Talbot	13	538	551	97.6%	267	49.6%
	Wicomico	49	1,152	1,201	95.9%	498	43.2%
	Worcester	12	729	741	98.4%	309	42.4%
<b>National Capital</b>		<b>752</b>	<b>15,330</b>	<b>16,082</b>	<b>95.3%</b>	<b>5,439</b>	<b>35.5%</b>
	Montgomery	286	7,381	7,667	96.3%	3,506	47.5%
	Prince George's	466	7,949	8,415	94.5%	1,933	24.3%
<b>Northwest</b>		<b>243</b>	<b>5,551</b>	<b>5,794</b>	<b>95.8%</b>	<b>2,455</b>	<b>44.2%</b>
	Allegany	44	1,122	1,166	96.2%	219	19.5%
	Frederick	105	2,114	2,219	95.3%	1,187	56.1%
	Garrett	13	428	441	97.1%	113	26.4%
	Washington	81	1,887	1,968	95.9%	936	49.6%
<b>Southern</b>		<b>176</b>	<b>3,092</b>	<b>3,268</b>	<b>94.6%</b>	<b>1,017</b>	<b>32.9%</b>
	Calvert	36	784	820	95.6%	334	42.6%
	Charles	95	1,341	1,436	93.4%	310	23.1%
	St. Mary's	45	967	1,012	95.6%	373	38.6%
<b>Maryland Total</b>		<b>2,802</b>	<b>57,273</b>	<b>60,075</b>	<b>95.3%</b>	<b>23,583</b>	<b>41.2%</b>

DataSources:

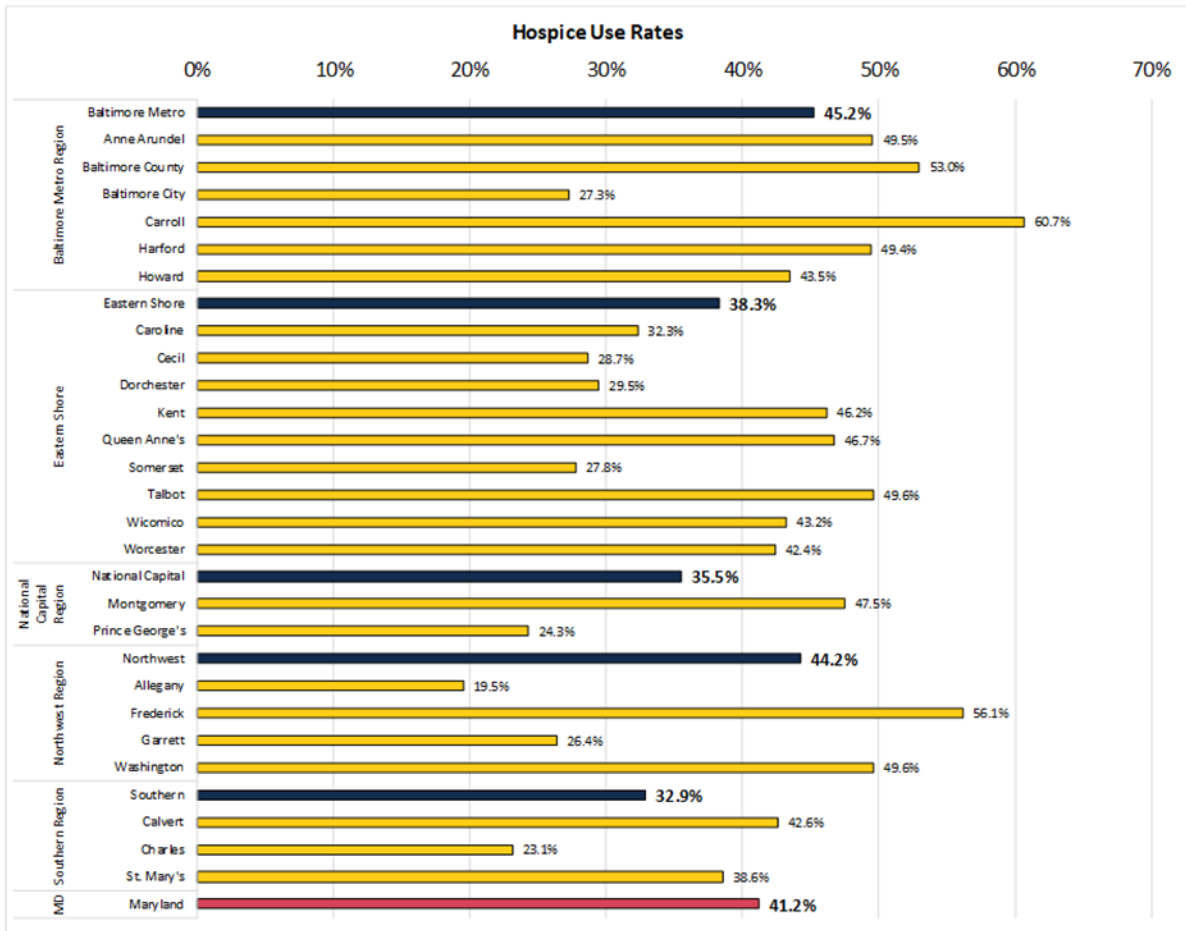
1. Maryland Vital Statistics Annual Report, 2020, TABLE 39B. NUMBER OF DEATHS BY AGE, REGION AND POLITICAL SUBDIVISION, MARYLAND, 2020
2. Patient Volume by County - MHCC Maryland Hospice Survey, FY2020



# Hospice Patients Served in Maryland

Hospice Use Rate by Maryland Region, FY2020

Region and Jurisdiction



Data Sources:

1. Maryland Vital Statistics Annual Report, 2020, TABLE 39B. NUMBER OF DEATHS BY AGE, REGION AND POLITICAL SUBDIVISION, MARYLAND, 2020
2. Patient Volume by County - MHCC Maryland Hospice Survey, FY2020



## Hospice Location of Services

In FY2019, a total of 24,915 patients, not including carryovers, were served in Maryland hospices. By far, the largest percentage were served in private homes<sup>3</sup> (45.9%) while 22.2% were served in general or respite care situations<sup>4</sup>. Additionally, 27.8% were served in skilled nursing or assisted living facilities. Very few, 4.1%, were served in residential hospices.<sup>5</sup> The total number of patients increased in FY2020 to 26,061 patients, not including carryovers. The distribution of location of services was similar to FY2019 because the largest percentage were served in private homes (51.7%) while 21.9% were served in general or respite care situations. Additionally, 23.5% were served in skilled nursing or assisted living facilities. Very few, 2.9%, were served in residential hospices.

---

<sup>3</sup> Hospice patients served in private homes include any patient served in any private home, excluding residential hospice, nursing homes, or assisted living facilities.

<sup>4</sup> General or respite care patients are served in general inpatient units or hospitals.

<sup>5</sup> Residential hospice patients are served in Hospice Houses which provide a routine/continuous level of care only and exclude nursing homes or assisted living facility settings.





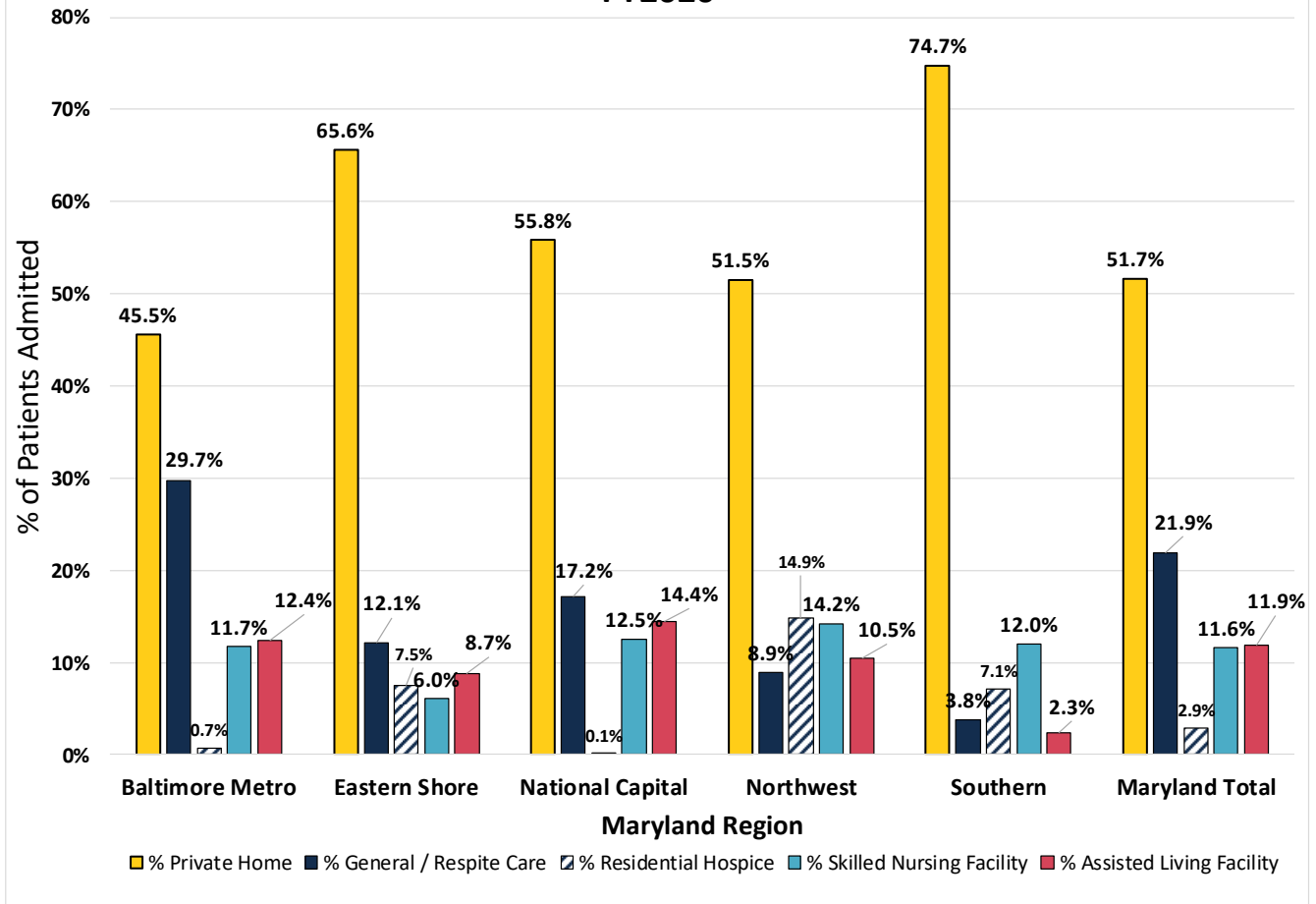
## Hospice Patients Served in Maryland by Location of Services, FY2020

Region and Jurisdiction	Total Patients Served	Private Home	% Private Home	General /Respite Care	% General /Respite Care	Residential Hospice	% Residential Hospice	Skilled Nursing Facility	% Skilled Nursing Facility	Assisted Living Facility	% Assisted Living Facility
<b>Baltimore Metro</b>	<b>13,778</b>	<b>6,273</b>	<b>45.5%</b>	<b>4,093</b>	<b>29.7%</b>	<b>101</b>	<b>0.7%</b>	<b>1,609</b>	<b>11.7%</b>	<b>1,702</b>	<b>12.4%</b>
Anne Arundel	2,512	1,346	53.6%	621	24.7%	3	0.1%	186	7.4%	356	14.2%
Baltimore County	5,445	2,316	42.5%	1,699	31.2%	23	0.4%	827	15.2%	580	10.7%
Baltimore City	2,237	1,022	45.7%	805	36.0%	55	2.5%	247	11.0%	108	4.8%
Carroll	1,099	361	32.8%	375	34.1%	1	0.1%	205	18.7%	157	14.3%
Harford	1,489	756	50.8%	425	28.5%	12	0.8%	51	3.4%	245	16.5%
Howard	996	472	47.4%	168	16.9%	7	0.7%	93	9.3%	256	25.7%
<b>Eastern Shore</b>	<b>2,424</b>	<b>1,591</b>	<b>65.6%</b>	<b>294</b>	<b>12.1%</b>	<b>181</b>	<b>7.5%</b>	<b>146</b>	<b>6.0%</b>	<b>212</b>	<b>8.7%</b>
Caroline	151	117	77.5%	1	0.7%	4	2.6%	13	8.6%	16	10.6%
Cecil	473	363	76.7%	61	12.9%	0	0.0%	8	1.7%	41	8.7%
Dorchester	138	124	89.9%	10	7.2%	0	0.0%	3	2.2%	1	0.7%
Kent	160	78	48.8%	4	2.5%	33	20.6%	7	4.4%	38	23.8%
Queen Anne's	227	139	61.2%	42	18.5%	32	14.1%	11	4.8%	3	1.3%
Somerset	108	77	71.3%	14	13.0%	0	0.0%	17	15.7%	0	0.0%
Talbot	287	132	46.0%	26	9.1%	84	29.3%	19	6.6%	26	9.1%
Wicomico	533	343	64.4%	91	17.1%	2	0.4%	44	8.3%	53	9.9%
Worcester	347	218	62.8%	45	13.0%	26	7.5%	24	6.9%	34	9.8%
<b>National Capital</b>	<b>6,085</b>	<b>3,396</b>	<b>55.8%</b>	<b>1,046</b>	<b>17.2%</b>	<b>5</b>	<b>0.1%</b>	<b>763</b>	<b>12.5%</b>	<b>875</b>	<b>14.4%</b>
Montgomery	3,853	1,936	50.2%	715	18.6%	3	0.1%	539	14.0%	660	17.1%
Prince George's	2,232	1,460	65.4%	331	14.8%	2	0.1%	224	10.0%	215	9.6%
<b>Northwest</b>	<b>2,666</b>	<b>1,374</b>	<b>51.5%</b>	<b>237</b>	<b>8.9%</b>	<b>396</b>	<b>14.9%</b>	<b>379</b>	<b>14.2%</b>	<b>280</b>	<b>10.5%</b>
Allegany	250	201	80.4%	0	0.0%	0	0.0%	39	15.6%	10	4.0%
Frederick	1,265	605	47.8%	233	18.4%	87	6.9%	189	14.9%	151	11.9%
Garrett	125	74	59.2%	0	0.0%	0	0.0%	45	36.0%	6	4.8%
Washington	1,026	494	48.1%	4	0.4%	309	30.1%	106	10.3%	113	11.0%
<b>Southern</b>	<b>1,108</b>	<b>828</b>	<b>74.7%</b>	<b>42</b>	<b>3.8%</b>	<b>79</b>	<b>7.1%</b>	<b>133</b>	<b>12.0%</b>	<b>26</b>	<b>2.3%</b>
Calvert	354	258	72.9%	4	1.1%	41	11.6%	41	11.6%	10	2.8%
Charles	339	321	94.7%	15	4.4%	0	0.0%	1	0.3%	2	0.6%
St. Mary's	415	249	60.0%	23	5.5%	38	9.2%	91	21.9%	14	3.4%
<b>Maryland Total</b>	<b>26,061</b>	<b>13,462</b>	<b>51.7%</b>	<b>5,712</b>	<b>21.9%</b>	<b>762</b>	<b>2.9%</b>	<b>3,030</b>	<b>11.6%</b>	<b>3,095</b>	<b>11.9%</b>

Datasource: MHCC Hospice Survey 2020. Data collection period FY2020. Patient Volume by County.



## Hospice Patients Served in Maryland by Location of Services, FY2020



Datasource: MHCC Hospice Survey 2020. Data collection period FY2020. Patient Volume by County.



## Hospice Non-Death Discharges

In FY2019, 3,578 patients were classified as non-death discharges. The most common reason for discharge was “discharged by hospice”<sup>6</sup> at 42.4% followed by “withdrew from hospice”<sup>7</sup> at 31.1%. Additionally, patients were discharged for “other” reasons (12.1%), and 8.4% transferred to another hospice.<sup>8</sup> The percentages were similar in FY2020 where 3,261 patients were classified as non-death discharges. Again, the most common reason for discharge was “discharged by hospice” at 47.5% followed by “withdrew from hospice” at 32.3%. Also, patients were discharged for “other” reasons (10.6%), and 9.6% transferred to another hospice.

---

<sup>6</sup> Discharged by Hospice includes patients not recertified for hospice because no longer terminally ill; patients who moved out of service area but did not transfer to another hospice; and patients discharged for cause.

<sup>7</sup> Withdrew includes patients who revoked the Medicare hospice benefit, those who desired treatment inconsistent with the hospice plan of care, and patients who refused hospice.

<sup>8</sup> Transferred to another hospice includes patients who transferred to another hospice without interruption of their Medicare hospice benefit.

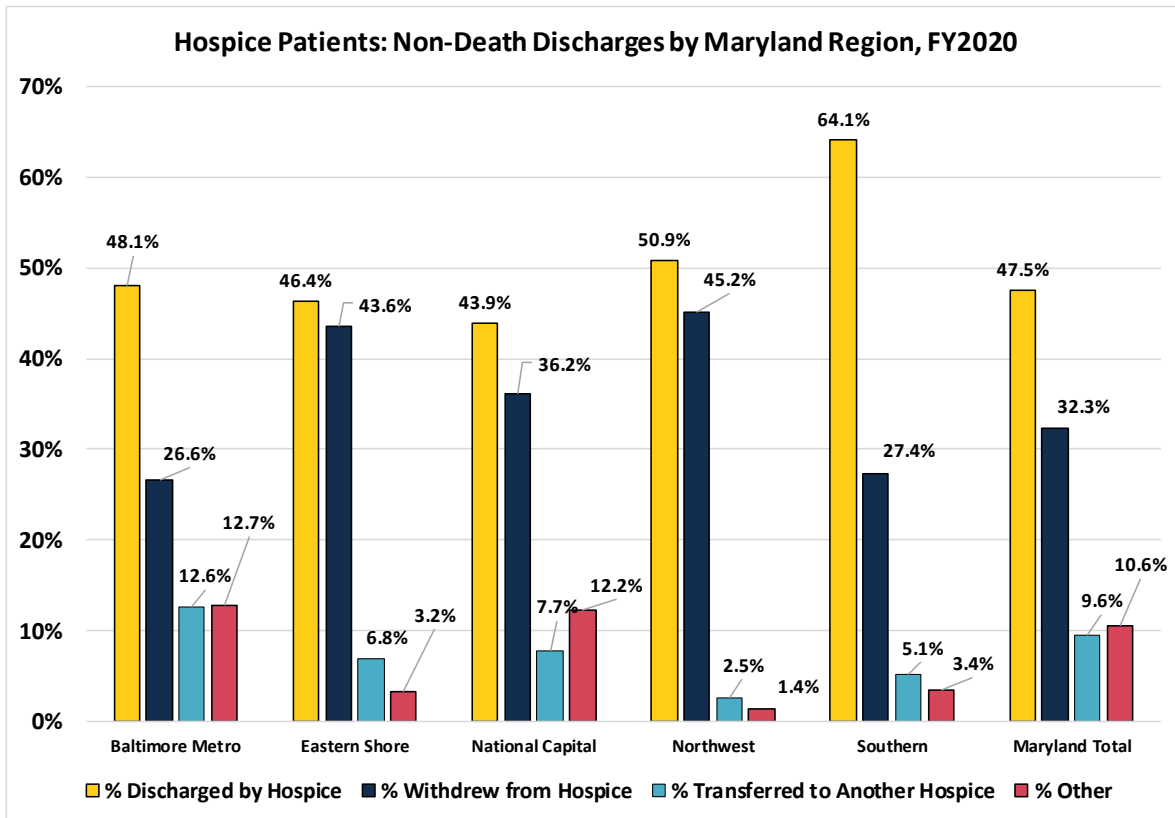


## Hospice Patients Served in Maryland: Non-Death Discharges, FY2020

Region and Jurisdiction	Total Patients Served	Discharged by Hospice	% Discharged by Hospice	Withdrew from Hospice	% Withdrew from Hospice	Transferred to Another Hospice	% Transferred to Another Hospice	Other	% Other	Total Non-Death Discharges	% Total Non-Death Discharges
<b>Baltimore Metro</b>	<b>13,778</b>	<b>795</b>	<b>48.1%</b>	<b>440</b>	<b>26.6%</b>	<b>208</b>	<b>12.6%</b>	<b>210</b>	<b>12.7%</b>	<b>1,653</b>	<b>12.0%</b>
Anne Arundel	2,512	152	60.6%	70	27.9%	23	9.2%	6	2.4%	251	10.0%
Baltimore County	5,445	359	50.8%	192	27.2%	81	11.5%	75	10.6%	707	13.0%
Baltimore City	2,237	137	41.5%	71	21.5%	46	13.9%	76	23.0%	330	14.8%
Carroll	1,099	31	47.7%	21	32.3%	4	6.2%	9	13.8%	65	5.9%
Harford	1,489	41	26.3%	51	32.7%	41	26.3%	23	14.7%	156	10.5%
Howard	996	75	52.1%	35	24.3%	13	9.0%	21	14.6%	144	14.5%
<b>Eastern Shore</b>	<b>2,424</b>	<b>102</b>	<b>46.4%</b>	<b>96</b>	<b>43.6%</b>	<b>15</b>	<b>6.8%</b>	<b>7</b>	<b>3.2%</b>	<b>220</b>	<b>9.1%</b>
Caroline	151	13	61.9%	8	38.1%	0	0.0%	0	0.0%	21	13.9%
Cecil	473	25	44.6%	24	42.9%	6	10.7%	1	1.8%	56	11.8%
Dorchester	138	3	25.0%	7	58.3%	2	16.7%	0	0.0%	12	8.7%
Kent	160	5	83.3%	1	16.7%	0	0.0%	0	0.0%	6	3.8%
Queen Anne's	227	4	33.3%	8	66.7%	0	0.0%	0	0.0%	12	5.3%
Somerset	108	8	50.0%	6	37.5%	1	6.3%	1	6.3%	16	14.8%
Talbot	287	4	30.8%	8	61.5%	1	7.7%	0	0.0%	13	4.5%
Wicomico	533	31	60.8%	14	27.5%	3	5.9%	3	5.9%	51	9.6%
Worcester	347	9	27.3%	20	60.6%	2	6.1%	2	6.1%	33	9.5%
<b>National Capital</b>	<b>6,085</b>	<b>435</b>	<b>43.9%</b>	<b>358</b>	<b>36.2%</b>	<b>76</b>	<b>7.7%</b>	<b>121</b>	<b>12.2%</b>	<b>990</b>	<b>16.3%</b>
Montgomery	3,853	273	52.8%	151	29.2%	57	11.0%	36	7.0%	517	13.4%
Prince George's	2,232	162	34.2%	207	43.8%	19	4.0%	85	18.0%	473	21.2%
<b>Northwest</b>	<b>2,666</b>	<b>143</b>	<b>50.9%</b>	<b>127</b>	<b>45.2%</b>	<b>7</b>	<b>2.5%</b>	<b>4</b>	<b>1.4%</b>	<b>281</b>	<b>10.5%</b>
Allegany	250	24	80.0%	6	20.0%	0	0.0%	0	0.0%	30	12.0%
Frederick	1,265	58	49.2%	55	46.6%	1	0.8%	4	3.4%	118	9.3%
Garrett	125	8	50.0%	8	50.0%	0	0.0%	0	0.0%	16	12.8%
Washington	1,026	53	45.3%	58	49.6%	6	5.1%	0	0.0%	117	11.4%
<b>Southern</b>	<b>1,108</b>	<b>75</b>	<b>64.1%</b>	<b>32</b>	<b>27.4%</b>	<b>6</b>	<b>5.1%</b>	<b>4</b>	<b>3.4%</b>	<b>117</b>	<b>10.6%</b>
Calvert	354	13	44.8%	9	31.0%	3	10.3%	4	13.8%	29	8.2%
Charles	339	35	68.6%	16	31.4%	0	0.0%	0	0.0%	51	15.0%
St. Mary's	415	27	73.0%	7	18.9%	3	8.1%	0	0.0%	37	8.9%
<b>Maryland Total</b>	<b>26,061</b>	<b>1,550</b>	<b>47.5%</b>	<b>1,053</b>	<b>32.3%</b>	<b>312</b>	<b>9.6%</b>	<b>346</b>	<b>10.6%</b>	<b>3,261</b>	<b>12.5%</b>

Datasource: MHCC Hospice Survey 2020. Data collection period FY2020. Patient Volume by County.



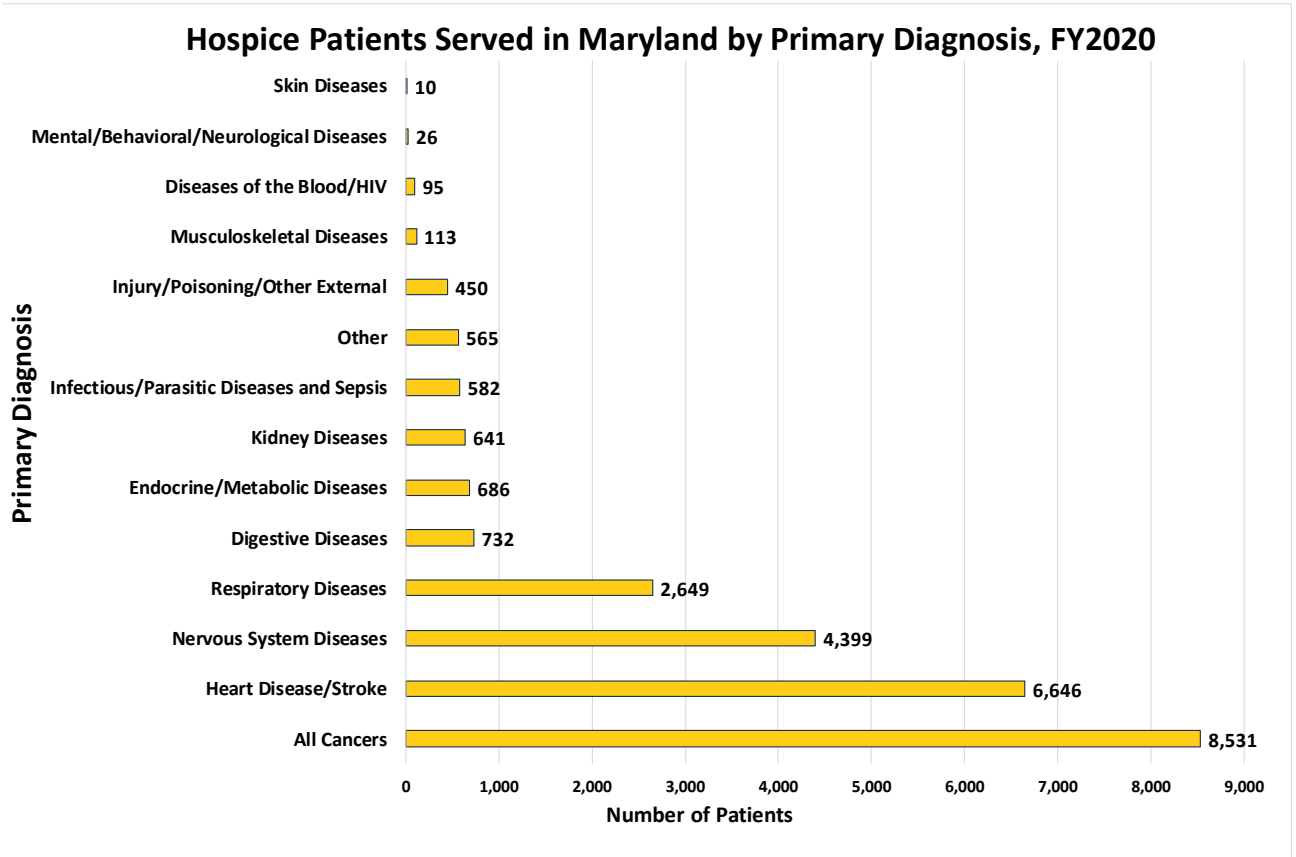


Datasource: MHCC Hospice Survey 2020. Data collection period FY2020. Patient Volume by County.



## Diagnoses at Admission

For both FY2020 and FY2019, the most common diagnosis was cancer, followed by heart disease or stroke, and nervous system diseases. Likewise, the two least common diagnoses were skin diseases and mental/behavioral/neurological diseases.

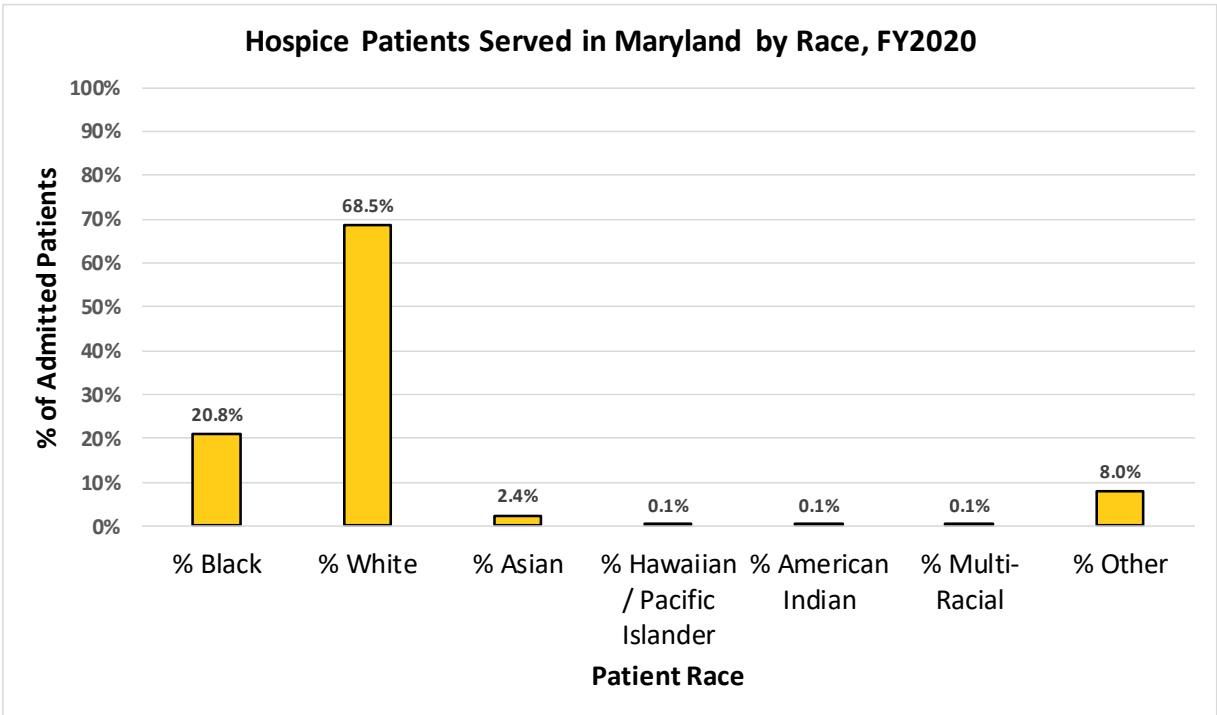


Note: These data include patients served outside of Maryland. These data include only patients admitted that year, no carryovers. Numbers represent illness diagnosed at admission. Datasource: MHCC Hospice Survey 2020. Data collection period FY2020. Patients by Primary Diagnosis.



## Utilization by Race

In FY2019, the majority of patients served were white (70.5%), and 20.8% were African American. Additionally, 6.3% were classified as “multi-racial” or “other.” Percentages were similar in FY2020 where most patients served were white (68.5%), 20.8% were African American, and 8.0% were classified as “multi-racial” or “other.”



Datasource: MHCC Hospice Survey 2020. Data collection period FY2020. Patient Volume by County.



## Hospice Patients Served in Maryland by Region and Race, FY2020

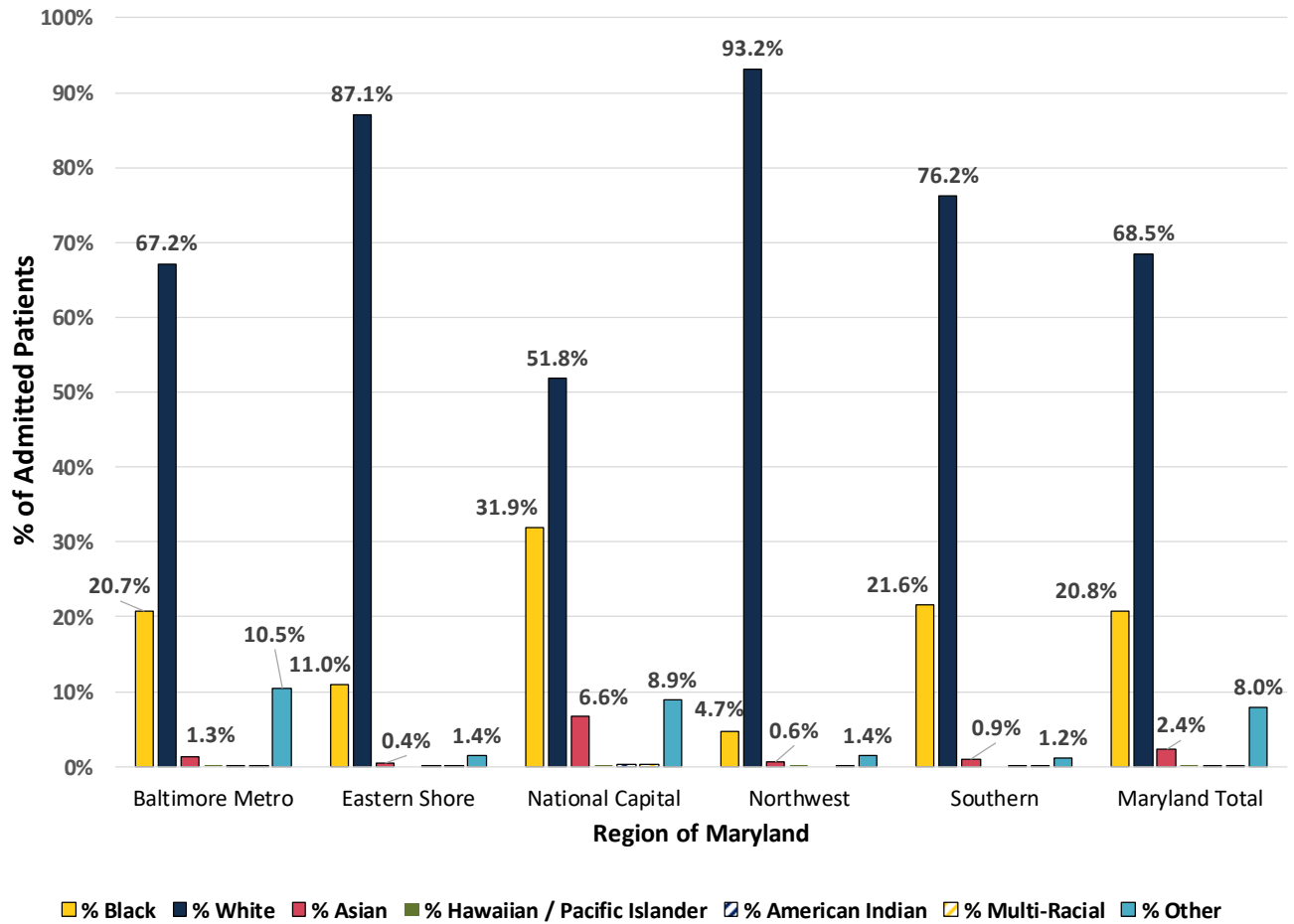
Region and Jurisdiction	Total Patients Served	%													
		Black	Black	White	White	Asian	Asian	Hawaiian / Pacific Islander	Hawaiian / Pacific Islander	American Indian	American Indian	Multi-Racial	Multi-Racial	Other	Other
<b>Baltimore Metro</b>	<b>13,778</b>	<b>2,854</b>	<b>20.7%</b>	<b>9,255</b>	<b>67.2%</b>	<b>175</b>	<b>1.3%</b>	<b>15</b>	<b>0.1%</b>	<b>19</b>	<b>0.1%</b>	<b>12</b>	<b>0.1%</b>	<b>1,448</b>	<b>10.5%</b>
Anne Arundel	2,512	363	14.5%	2,036	81.1%	28	1.1%	6	0.2%	2	0.1%	5	0.2%	72	2.9%
Baltimore County	5,445	1,113	20.4%	3,356	61.6%	49	0.9%	4	0.1%	8	0.1%	6	0.1%	909	16.7%
Baltimore City	2,237	1,071	47.9%	780	34.9%	17	0.8%	2	0.1%	3	0.1%	1	0.0%	363	16.2%
Carroll	1,099	34	3.1%	1,045	95.1%	8	0.7%	1	0.1%	1	0.1%	0	0.0%	10	0.9%
Harford	1,489	126	8.5%	1,315	88.3%	10	0.7%	1	0.1%	2	0.1%	0	0.0%	35	2.4%
Howard	996	147	14.8%	723	72.6%	63	6.3%	1	0.1%	3	0.3%	0	0.0%	59	5.9%
<b>Eastern Shore</b>	<b>2,424</b>	<b>266</b>	<b>11.0%</b>	<b>2,111</b>	<b>87.1%</b>	<b>9</b>	<b>0.4%</b>	<b>0</b>	<b>0.0%</b>	<b>1</b>	<b>0.0%</b>	<b>3</b>	<b>0.1%</b>	<b>34</b>	<b>1.4%</b>
Caroline	151	14	9.3%	133	88.1%	1	0.7%	0	0.0%	0	0.0%	2	1.3%	1	0.7%
Cecil	473	19	4.0%	432	91.3%	1	0.2%	0	0.0%	1	0.2%	0	0.0%	20	4.2%
Dorchester	138	25	18.1%	112	81.2%	1	0.7%	0	0.0%	0	0.0%	0	0.0%	0	0.0%
Kent	160	9	5.6%	151	94.4%	0	0.0%	0	0.0%	0	0.0%	0	0.0%	0	0.0%
Queen Anne's	227	21	9.3%	204	89.9%	0	0.0%	0	0.0%	0	0.0%	0	0.0%	2	0.9%
Somerset	108	21	19.4%	87	80.6%	0	0.0%	0	0.0%	0	0.0%	0	0.0%	0	0.0%
Talbot	287	25	8.7%	256	89.2%	0	0.0%	0	0.0%	0	0.0%	0	0.0%	6	2.1%
Wicomico	533	97	18.2%	426	79.9%	6	1.1%	0	0.0%	0	0.0%	1	0.2%	3	0.6%
Worcester	347	35	10.1%	310	89.3%	0	0.0%	0	0.0%	0	0.0%	0	0.0%	2	0.6%
<b>National Capital</b>	<b>6,085</b>	<b>1,943</b>	<b>31.9%</b>	<b>3,155</b>	<b>51.8%</b>	<b>404</b>	<b>6.6%</b>	<b>10</b>	<b>0.2%</b>	<b>18</b>	<b>0.3%</b>	<b>13</b>	<b>0.2%</b>	<b>542</b>	<b>8.9%</b>
Montgomery	3,853	606	15.7%	2,672	69.3%	352	9.1%	7	0.2%	9	0.2%	5	0.1%	202	5.2%
Prince George's	2,232	1,337	59.9%	483	21.6%	52	2.3%	3	0.1%	9	0.4%	8	0.4%	340	15.2%
<b>Northwest</b>	<b>2,666</b>	<b>126</b>	<b>4.7%</b>	<b>2,484</b>	<b>93.2%</b>	<b>15</b>	<b>0.6%</b>	<b>3</b>	<b>0.1%</b>	<b>0</b>	<b>0.0%</b>	<b>1</b>	<b>0.0%</b>	<b>37</b>	<b>1.4%</b>
Allegany	250	10	4.0%	240	96.0%	0	0.0%	0	0.0%	0	0.0%	0	0.0%	0	0.0%
Frederick	1,265	77	6.1%	1,144	90.4%	15	1.2%	2	0.2%	0	0.0%	0	0.0%	27	2.1%
Garrett	125	0	0.0%	125	#####	0	0.0%	0	0.0%	0	0.0%	0	0.0%	0	0.0%
Washington	1,026	39	3.8%	975	95.0%	0	0.0%	1	0.1%	0	0.0%	1	0.1%	10	1.0%
<b>Southern</b>	<b>1,108</b>	<b>239</b>	<b>21.6%</b>	<b>844</b>	<b>76.2%</b>	<b>10</b>	<b>0.9%</b>	<b>0</b>	<b>0.0%</b>	<b>1</b>	<b>0.1%</b>	<b>1</b>	<b>0.1%</b>	<b>13</b>	<b>1.2%</b>
Calvert	354	58	16.4%	294	83.1%	0	0.0%	0	0.0%	1	0.3%	0	0.0%	1	0.3%
Charles	339	110	32.4%	216	63.7%	7	2.1%	0	0.0%	0	0.0%	0	0.0%	6	1.8%
St. Mary's	415	71	17.1%	334	80.5%	3	0.7%	0	0.0%	0	0.0%	1	0.2%	6	1.4%
<b>Maryland Total</b>	<b>26,061</b>	<b>5,428</b>	<b>20.8%</b>	<b>17,849</b>	<b>68.5%</b>	<b>613</b>	<b>2.4%</b>	<b>28</b>	<b>0.1%</b>	<b>39</b>	<b>0.1%</b>	<b>30</b>	<b>0.1%</b>	<b>2,074</b>	<b>8.0%</b>

Datasource: MHCC Hospice Survey 2020. Data collection period FY2020. Patient Volume by County.





### Hospice Patients Served by Region and Race, FY2020

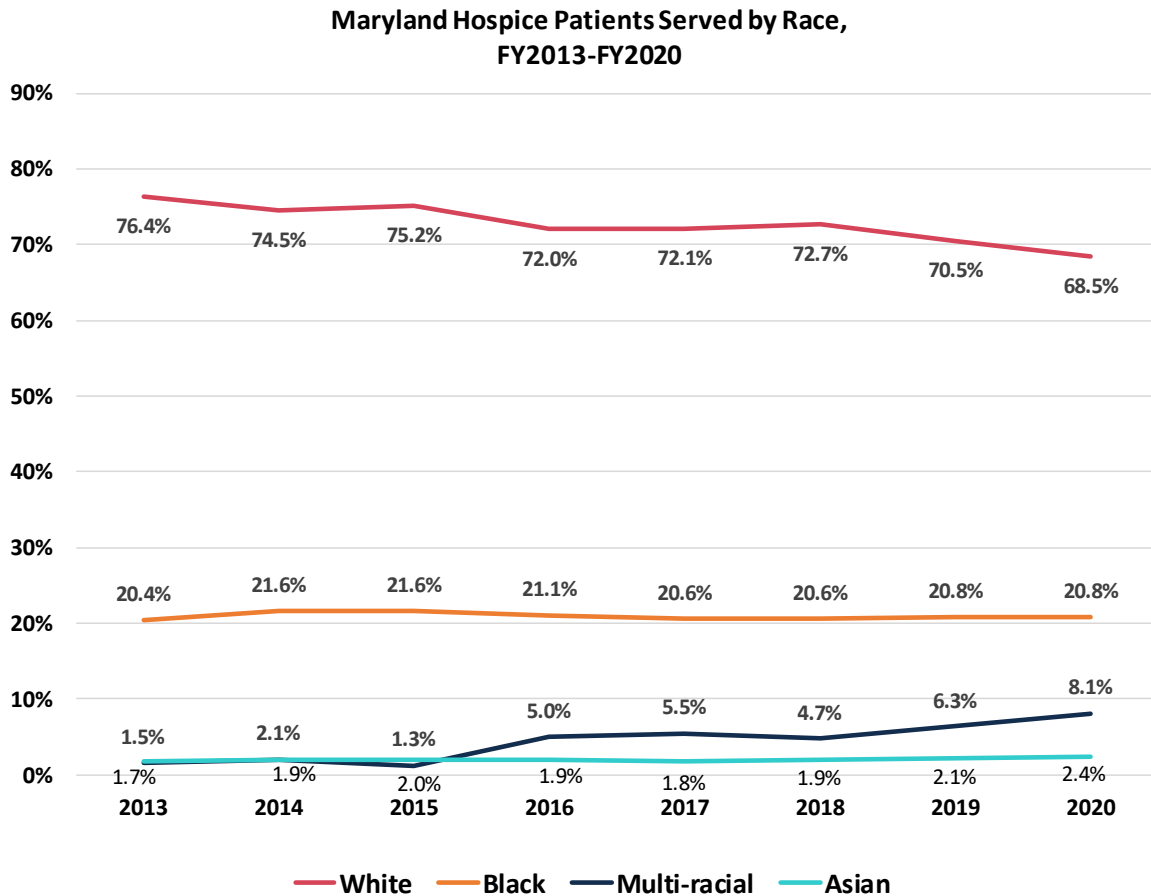


Datasource: MHCC Hospice Survey 2020. Data collection period FY2020. Patient Volume by County.



## Race Trends Over Time

For the state of Maryland, African American hospice use has remained stable from FY2013 to FY2020, ranging from 20.4% in FY2013 to a high of 21.6% in FY2014 and FY2015. Rates of use have steadily declined for white Marylanders with rates decreasing from 76.4% in FY2013 to 68.5% in FY2020. Also, the rates for those classified as “multi-racial/other” have steadily increased from 1.7% in FY2013 to 8.0% in FY2020.

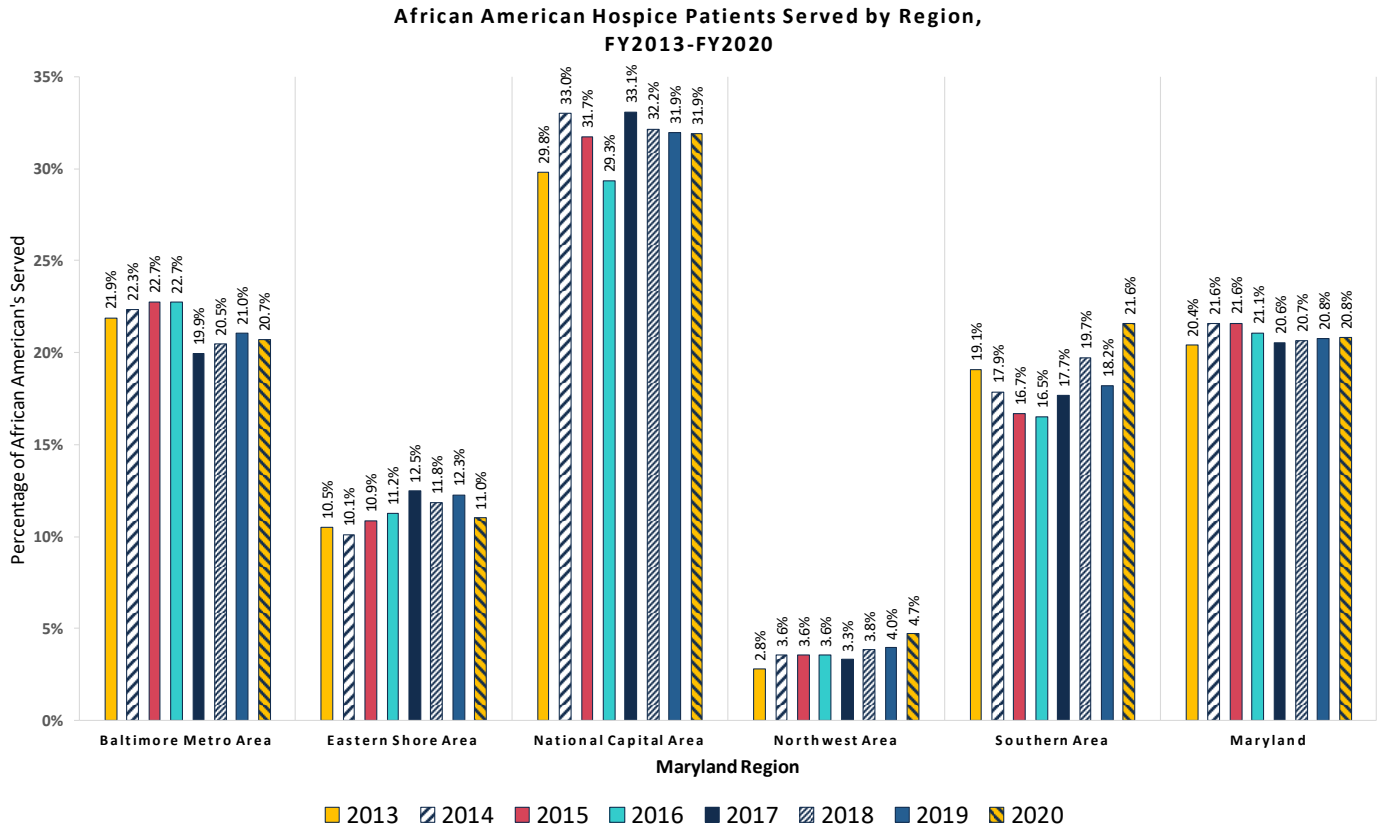


Data source: MHCC Hospice Survey 2013-2020. Data collection period FY2013-FY2020. Patient Volume by County.



## African American Hospice Patients Served by Region Over Time

Rates of hospice use have remained steady for African Americans in Maryland but have fluctuated slightly over the years FY2013 to FY2020 when rates are examined by region.



Datasource: MHCC Hospice Survey 2013-2020. Data collection period FY2013-FY2020. Patient Volume by County.

## Outreach to African Americans to Increase Hospice Use

Outreach to African Americans has been a central goal for the Maryland Health Care Commission. From 2013-2015, the Commission conducted education and outreach in order to increase the use of hospice by minority populations. Additionally, in 2020, the Center for Quality Measurement and Reporting developed a hospice brochure and infographic to increase minorities' awareness of hospice benefits. Staff were able to share the hospice brochure with eight county libraries with the highest proportion of African Americans and with hospital discharge planners who requested the information. Staff also shared the infographic on social media and plan to update the brochure with a similar theme later this year.





**MARYLAND**  
**Health Care**  
**Commission**

4160 Patterson Avenue  
Baltimore, MD 21215

---

[mhcc.maryland.gov](http://mhcc.maryland.gov)