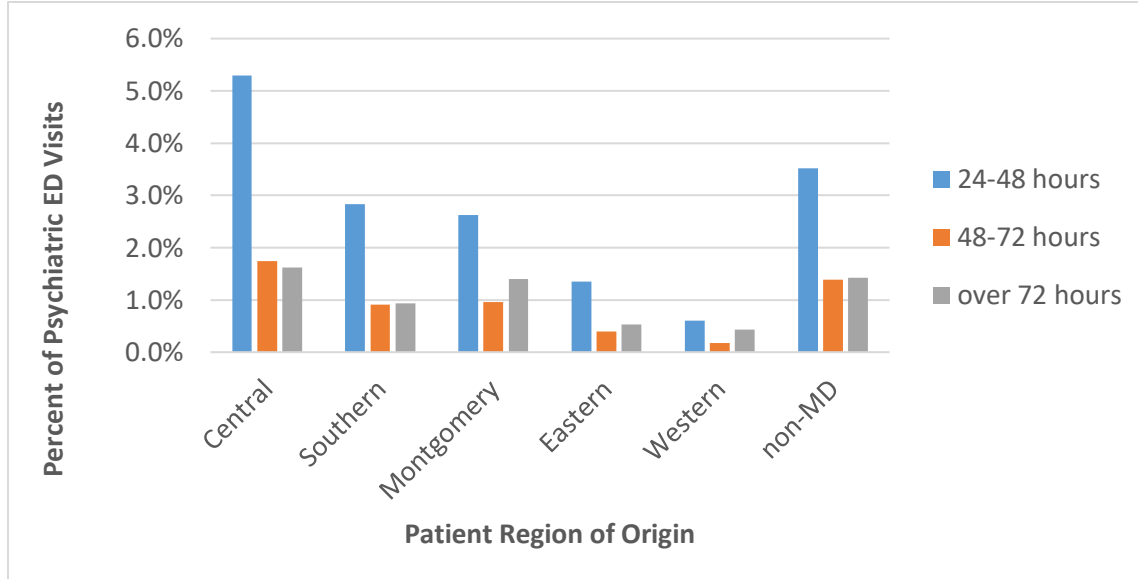
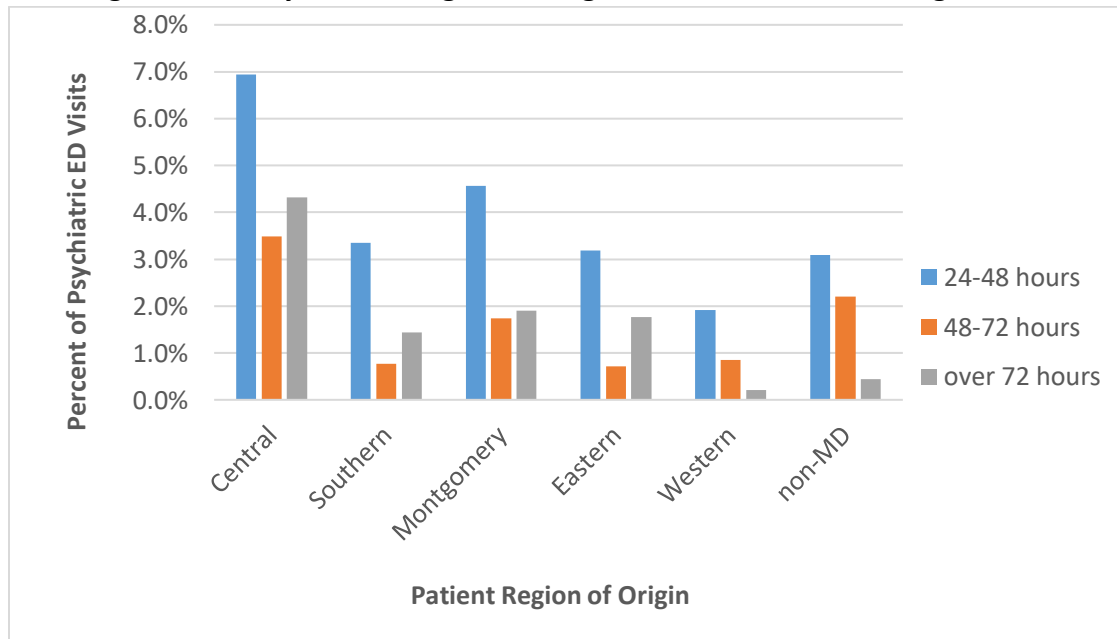


## ED Boarding in Maryland Hospitals for Psychiatric Patients Not Admitted to a Hospital or Admitted to a Different Hospital Following Boarding

**Table 6a: Percent of Adult ED Visits with a Primary Psychiatric Diagnosis Boarding in the ED, by Patient Region of Origin and Estimated Boarding Time, CY 2018**



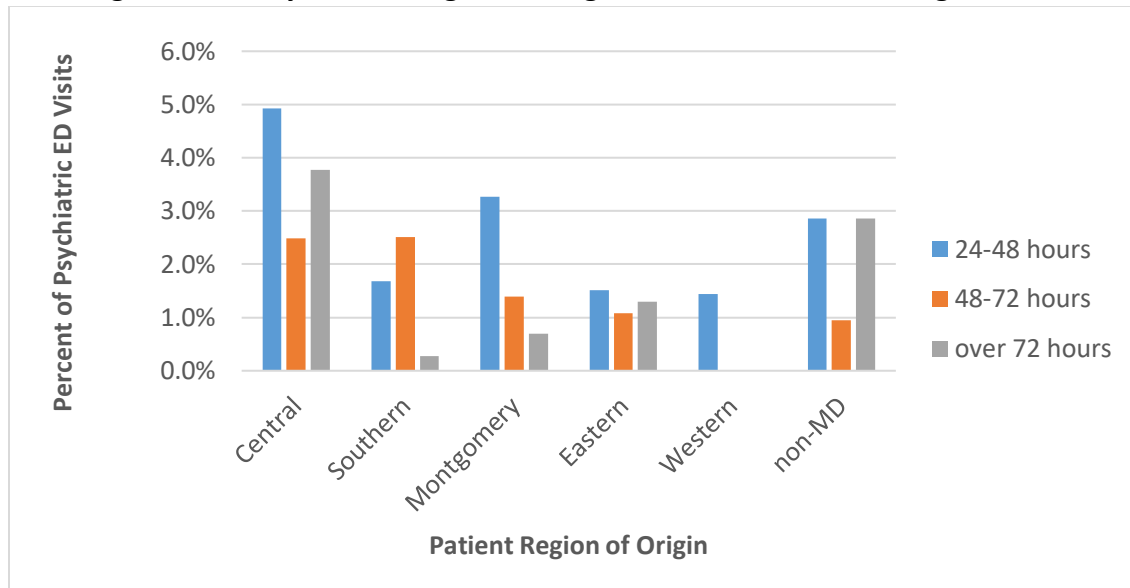
**Table 6b: Percent of Adolescent ED Visits with a Primary Psychiatric Diagnosis Boarding in the ED, by Patient Region of Origin and Estimated Boarding Time, CY 2018**



Source: MHCC staff analysis of HSCRC outpatient data for CY 2018.

Note: Psychiatric patients who are admitted to the same hospital where they had an emergency department visit are included in the HSCRC discharge data and no information on boarding times is included.

**Table 6c: Percent of Child ED Visits with a Primary Psychiatric Diagnosis Boarding in the ED, by Patient Region of Origin and Estimated Boarding Time, CY 2018**



Source: MHCC staff analysis of HSCRC outpatient data for CY 2018.

Note: Psychiatric patients who are admitted to the same hospital where they had an emergency department visit are included in the HSCRC discharge data and no information on boarding times is included.