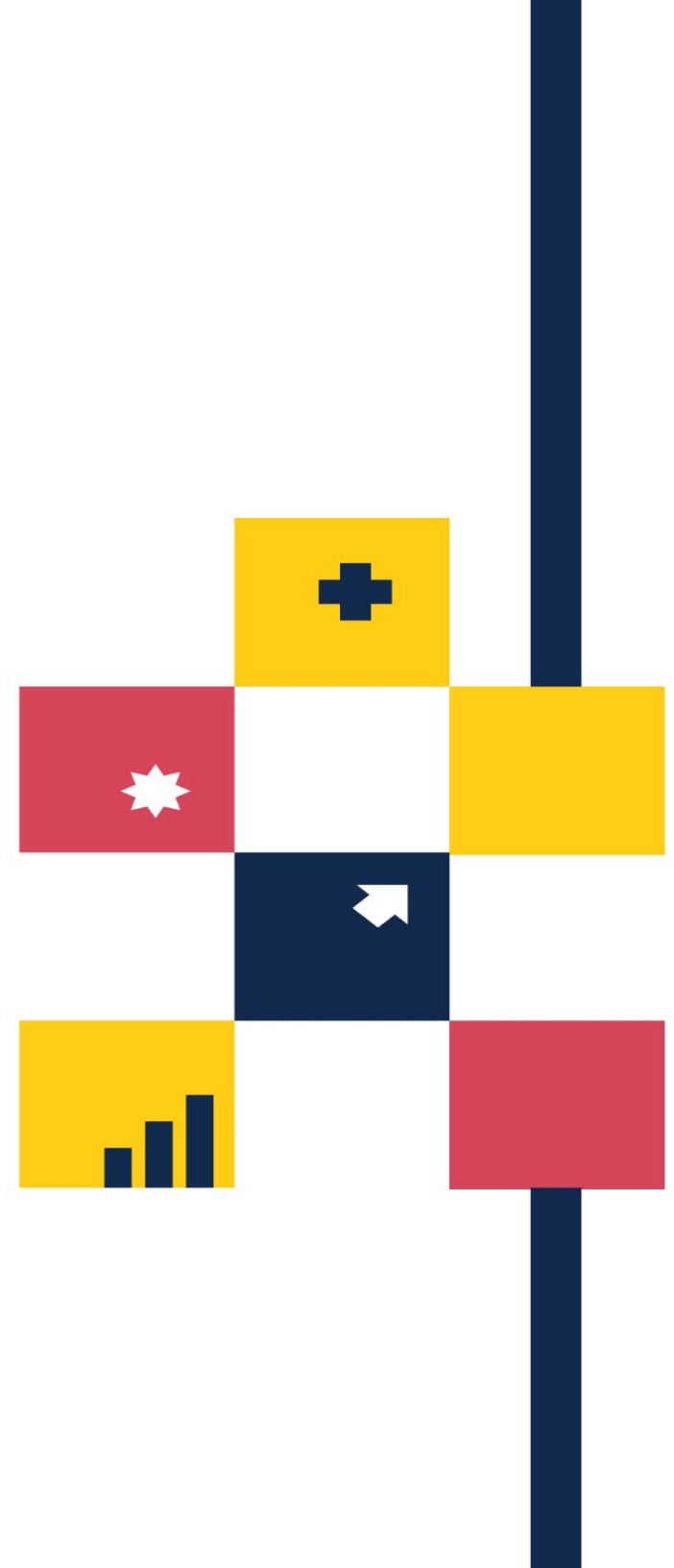


Chartbook of Maryland General and Special Hospital Facilities and Services

Fiscal Year 2025

Marcia Boyle
ACTING CHAIR

Dr. Douglas Jacobs
EXECUTIVE DIRECTOR





Marcia Boyle, MS, Acting Chair
Founder, Immune Deficiency Foundation

Awawu Agbabiaka, CRNP
Nurse Practitioner
AIM Behavioral Health Services

Arun Bhandari, MD
Chesapeake Oncology Hematology
Associates, PA

Hassanatu Blake, PhD, MPH, MBA
Director, Health Equity & Social Justice
National Association of County & City Health Officials

Tinisha Cheatham, MD
Physician in Chief of the Mid-Atlantic
Permanente Medical Group

Karl Douglas, MBA
Director of Talent Development
Brightview Senior Living

Danielle Stroughton-Duncan, PhD
Education Division Director
COLA, Inc.

Letitia Dzirasa, MD
Deputy Mayor, Health and Human Services
Mayor's Office

Arin D. Foreman
Vice President, Deputy Chief of Staff
CareFirst BlueCross Blue Shield

Joan L. Gelrud, RN, MSN, FACHE, CPHQ
Member of the AHRQ National Advisory Council,
Court Appointed Special Advocate for Children

Shante Gilmore, DrPH, MPH
Director, Health Equity Initiatives
The Patient Advocate Foundation

Mark T. Jensen, Esq.
Partner
Bowie & Jensen, LLC

Jovonni Spinner, PhD, MPH, CHES
CEO/Founder
Beacon Public Health

Marcus L. Wang, Esq.
Operating Partner
R2C Capital

Chartbook of Maryland General and Special Hospital Facilities and Services

Fiscal Year 2025



Center for Health Care Facilities
Planning & Development

Contents

Tables

Table 1: Licensed Acute Care Beds by Hospital and Service: Maryland, FY 2025.....	1
Table 2: Trend in Licensed Acute Care Beds by Hospital: Maryland, FY 2016 – FY 2025.....	3
Table 3: Percent Change in Total Licensed Acute Care Hospital Beds, by Maryland Region: FY 2016 – FY 2025.....	5
Table 4: Change in Number of Total Licensed Acute Care Beds by Region: Maryland Hospitals, FY 2024 - FY 2025.....	6
Table 5: Allocation of Licensed Acute Care Beds by Service Maryland Hospitals, FY 2016 – FY 2025.....	6
Table 6: Allocation of Licensed Acute Care Beds by Service (Percentage), Maryland Hospitals, FY 2016 - FY 2025.....	6
Table 7: Critical Care Bed Inventory: Maryland Hospitals.....	8
Table 8: Licensed Acute Care Beds with Monitoring Capability: Maryland Hospitals, FY 2024.....	10
Table 9: Trend in Hospitals and Licensed Acute Care Bed Capacity by Hospital System Affiliation Maryland Hospitals, FY 2016 – FY 2025.....	12
Table 10: Multi-hospital Systems and Independent Hospitals and Beds by System Status Maryland FY 2016 – FY 2025.....	16
Table 11: Maryland Acute Care General Hospital Observation Services June 1, 2024.....	17
Table 12: Summary - Acute Care Hospital Observation Beds, June 1, 2024.....	18
Table 13: Inventory of Emergency Department / Freestanding Medical Facility (FMF) Treatment Capacity: Maryland: June 1, 2024.....	19
Table 14: Trends in Emergency Department / Freestanding Medical Facilities Treatment Capacity: Maryland, June 1, 2015 - June 1, 2024.....	21
Table 15: Surgical Services Capacity by Hospital and Type of Operating Room: Maryland Hospitals, June 1, 2024.....	25
Table 16: Dedicated Cesarean Section Operating Rooms and Procedure Rooms by Hospital: Maryland Hospitals, June 1, 2024.....	26
Table 17: Trends in Number of Surgical Rooms: Maryland Hospitals, 2022 - 2024.....	29
Table 18: Obstetric Service Capacity, Maryland Hospitals, June 1, 2024.....	32
Table 19: Newborn Nursery Bassinets: Maryland Hospitals, FY 2025.....	34
Table 20: Inpatient Medical Rehabilitation Services by Region and Jurisdiction, June 1, 2024.....	35
Table 21: Licensed Special Hospitals and their Special Hospital (Non-Psychiatric and Non-Rehabilitation) Beds Maryland, June 1, 2024.....	37
Table 22: Licensed Special Hospital (Non-Psychiatric and Non-Rehabilitation) Beds: Located at Acute Care Hospitals, Maryland, June 1, 2024.....	37
Table 23: Licensed Comprehensive Care Facility Beds at Acute Care Hospitals, Maryland, June 1, 2024.....	37
Table 24: Inpatient Acute Psychiatric Services Available at General Acute Care Hospitals: Maryland, FY 2024.....	38
Table 25: Inpatient Services Available at Private Special Hospitals - Psychiatric: Maryland, June 1, 2024.....	39
Table 26: Inpatient Psychiatric Services Provided at State Special Hospitals - Psychiatric Maryland, June 1, 2024.....	40
Table 27: Partial Hospitalization and/or Intensive Outpatient Psychiatric Services at Acute Care Hospitals: Maryland, June 1, 2024.....	41
Table 28: Partial Hospitalization and/or Intensive Outpatient Services at Private Special Hospitals - Psychiatric: Maryland, June 1, 2024.....	43
Table 29: Inventory and Utilization of Psychiatric Beds at General Acute Care Hospitals Maryland, CY 2024.....	44
Table 30: Inventory and Utilization of Acute Psychiatric Beds at Private Psychiatric Hospitals: Maryland, CY 2024.....	46
Table 31: Inventory and Utilization of Psychiatric Beds at State Psychiatric Hospitals: Maryland, June 1, 2024.....	46

Figures

Figure 1: Year to Year Change in Total Licensed Acute Care Beds: Maryland Hospitals, FY 2016 – FY 2025.....5

Figure 2: Total Licensed Acute Care Beds: Maryland Hospitals, FY 2016 – FY 2025.....5

Figure 3: Hospital Admissions per 1,000 Population All Hospital Unit Admissions (Excludes NH Unit Admissions) U.S. and Maryland 2014 – 2023.....7

Figure 4: Hospital Average Length of Stay All Hospital Unit Admissions (Excludes NH Unit Admissions) U.S. and Maryland 2014-2023.....7

Figure 5: Comparison of Multi-hospital Systems and Non-Hospital System Hospitals, Maryland FY 2016 – FY 2025.....15

Figure 6: Change in Number of Emergency Treatment Spaces by Type of Space: Maryland, FY 2016 – FY 2025.....24

Note to Reader: Pursuant to Directives from the Secretary of the Maryland Department of Health, June 12, 2020 and June 25, 2021, respectively, MHCC staff did not conduct annual licensed bed surveys for fiscal year FY 2021 and FY 2022. The total number of licensed beds granted to hospitals for FY 2020 remained the same for FY 2021 and FY 2022. For this reason, MHCC staff is unable to include details on the breakdown of licensed beds by hospital in FY 2021 and FY 2022 for tables that include trend information across those years.

MHCC staff did not conduct the annual supplemental surveys for FY 2022. For this reason, tables with inventory trends over time do not include data for 2021.

Table 1: Licensed Acute Care Beds by Hospital and Service: Maryland, FY 2025

Jurisdiction / Region	Hospital	Acute Care Inpatient Service				
		MSGA	Obstetric	Pediatric	Psychiatric	Total
Allegany	UPMC Western Maryland	154	7	1	15	177
Frederick	Frederick Health Hospital	208	27	5	21	261
Garrett	Garrett Regional Medical Center	16	1	1	0	18
Washington	Meritus Medical Center	209	15	1	14	239
WESTERN MARYLAND TOTAL		587	50	8	50	695
Montgomery	Adventist HealthCare Shady Grove Medical Center	172	46	10	132	360
	Adventist HealthCare White Oak Medical Center	191	26	0	0	217
	Holy Cross Germantown Hospital	78	12	0	6	96
	Holy Cross Hospital of Silver Spring	258	84	4	0	346
	MedStar Montgomery Medical Center	82	5	2	11	100
	Suburban Hospital	226	0	3	24	253
MONTGOMERY COUNTY TOTAL		1,007	173	19	173	1,372
Calvert	CalvertHealth Medical Center	62	4	0	15	81
Charles	University of MD Charles Regional Medical Center	81	12	6	0	99
Prince George's	Luminis Doctors Community Hospital	202	0	0	16	218
	Adventist HealthCare Fort Washington Medical Center	33	0	0	0	33
	MedStar Southern Maryland Hospital Center	144	18	4	24	190
	University of MD Capital Region Medical Center	183	16	1	28	228
<i>Prince George's County Total</i>		562	34	5	68	669
St. Mary's	MedStar St. Mary's Hospital	65	11	6	12	94
SOUTHERN MARYLAND TOTAL		770	61	17	95	943
Anne Arundel	Luminis Anne Arundel Medical Center	309	60	8	0	377
	University of MD Baltimore Washington Medical Center	262	18	5	21	306
<i>Anne Arundel County Total</i>		571	78	13	21	683
Baltimore City	Johns Hopkins Bayview Medical Center	334	22	9	20	385
	MedStar Good Samaritan Hospital	147	0	0	0	147
	MedStar Harbor Hospital	82	12	0	25	119
	MedStar Union Memorial Hospital	186	0	1	0	187
	Mercy Medical Center	109	32	4	0	145
	Sinai Hospital of Baltimore	300	25	26	48	399

Table 1: Licensed Acute Care Beds by Hospital and Service: Maryland, FY 2025

Jurisdiction / Region	Hospital	Acute Care Inpatient Service				
		MSGA	Obstetric	Pediatric	Psychiatric	Total
Baltimore City (cont.)	Ascension Saint Agnes Hospital	164	15	3	0	182
	Johns Hopkins Hospital	862	35	140	108	1,145
	University of MD Medical Center	608	30	59	44	741
	University of MD Medical Center Midtown Campus	75	0	0	37	112
	University of MD Rehabilitation and Orthopedic Institute	4	0	0	0	4
<i>Baltimore City Total</i>		2,871	171	242	282	3,566
Baltimore County	Greater Baltimore Medical Center	143	60	8	0	211
	MedStar Franklin Square Medical Center	276	37	0	40	353
	Northwest Hospital Center	150	0	0	49	199
	University of MD St. Joseph Medical Center	175	20	4	18	217
<i>Baltimore County Total</i>		744	117	12	107	980
Carroll	Carroll Hospital Center	120	20	4	20	164
Harford	University of MD Upper Chesapeake Medical Center	208	9	1	0	218
Howard	Howard County General Hospital	202	34	6	20	262
CENTRAL MARYLAND TOTAL		4,716	429	278	450	5,873
Cecil	ChristianaCare Union Hospital	81	4	2	12	99
Kent	University of MD Shore Medical Center at Chestertown	5	0	0	0	5
Talbot	University of MD Shore Medical Center at Easton	72	13	3	10	98
Wicomico	TidalHealth Peninsula Regional Medical Center	219	20	8	28	275
Worcester	Atlantic General Hospital	43	0	0	0	43
EASTERN SHORE TOTAL		420	37	13	50	520
MARYLAND TOTAL		7,500	750	335	818	9,403

Source: MHCC Acute Care Hospital Licensed Bed Inventory (ACHI), FY 2025

Table 2: Trend in Licensed Acute Care Beds by Hospital: Maryland, FY 2016 – FY 2025

Jurisdiction / Region	Hospital	2016	2017	2018	2019	2020	2023	2024	2025
Allegany	UPMC Western Maryland	195	198	200	200	191	200	175	177
Frederick	Frederick Health Hospital	233	239	257	266	269	264	257	261
Garrett	Garrett Regional Medical Center	25	27	27	27	26	21	18	18
Washington	Meritus Medical Center	223	227	237	236	237	248	225	239
WESTERN MARYLAND TOTAL		676	691	721	729	723	733	675	695
Montgomery	Adventist HealthCare Shady Grove Medical Center	290	256	266	248	329	371	361	360
	Adventist HealthCare White Oak Medical Center	230	204	204	191	178	213	226	217
	Holy Cross Germantown Hospital	93	93	72	65	70	82	88	96
	Holy Cross Hospital of Silver Spring	423	409	403	395	377	353	340	346
	MedStar Montgomery Medical Center	122	114	115	117	104	96	114	100
	Suburban Hospital	236	222	230	233	228	226	240	253
MONTGOMERY COUNTY TOTAL		1,394	1,298	1,290	1,249	1,286	1,341	1,369	1,372
Calvert	CalvertHealth Medical Center	77	76	74	71	73	80	80	81
Charles	University of MD Charles Regional Medical Center	110	89	109	98	99	104	99	99
Prince George's	Adventist HealthCare Fort Washington Medical Center	34	32	32	27	28	31	36	33
	Luminis Doctors Community Hospital	163	190	210	190	206	200	208	218
	MedStar Southern Maryland Hospital Center	208	192	182	176	182	188	197	190
	University of MD Laurel Regional Hospital ¹	60	63	61	55	-	-	-	-
	University of MD Capital Region Medical Center	237	233	230	238	254	217	233	228
	<i>Prince George's County Total</i>	<i>702</i>	<i>710</i>	<i>715</i>	<i>686</i>	<i>670</i>	<i>636</i>	<i>674</i>	<i>669</i>
St. Mary's	MedStar St. Mary's Hospital	91	103	109	96	93	105	100	94
SOUTHERN MARYLAND TOTAL		980	978	1,007	951	935	925	953	943
Anne Arundel	Luminis Anne Arundel Medical Center	375	370	385	349	349	397	377	377
	University of MD Baltimore Washington Medical Center	303	293	288	272	285	314	307	306
	<i>Anne Arundel County Total</i>	<i>678</i>	<i>663</i>	<i>673</i>	<i>621</i>	<i>634</i>	<i>711</i>	<i>684</i>	<i>683</i>
Baltimore City	Johns Hopkins Bayview Medical Center	341	330	342	335	350	356	363	385
	MedStar Good Samaritan Hospital	165	155	137	132	145	153	151	147
	MedStar Harbor Hospital	113	107	139	129	131	142	125	119
	MedStar Union Memorial Hospital	211	209	192	185	185	191	189	187
	Mercy Medical Center	184	183	178	174	183	147	129	145
	Sinai Hospital of Baltimore	392	367	370	340	348	438	424	399
	Ascension Saint Agnes Hospital	251	263	254	243	247	174	181	182
	Johns Hopkins Hospital	1,129	1,131	1,091	1,114	1,095	1,079	1,105	1,145

Table 2: Trend in Licensed Acute Care Beds by Hospital: Maryland, FY 2016 – FY 2025

Jurisdiction / Region	Hospital	2016	2017	2018	2019	2020	2023	2024	2025
Baltimore City (cont.)	Bon Secours Hospital / Grace Medical Center ²	72	72	69	68	71	-	-	-
	University of MD Medical Center	772	750	767	789	806	739	710	741
	University of MD Medical Center Midtown Campus	107	87	90	97	100	121	116	112
	University of MD Rehabilitation and Orthopedic Institute	7	4	3	3	2	4	4	4
	<i>Baltimore City Total</i>	3,744	3,658	3,632	3,609	3,663	3,544	3,497	3,566
Baltimore County	Greater Baltimore Medical Center	231	232	231	239	257	235	228	211
	MedStar Franklin Square Medical Center	364	353	348	347	338	354	357	353
	Northwest Hospital Center	199	192	202	189	190	193	198	199
	University of MD St. Joseph Medical Center	247	232	224	218	219	207	221	217
	<i>Baltimore County Total</i>	1,041	1,009	1,005	993	1,004	989	1,004	980
Carroll	Carroll Hospital Center	140	143	146	153	161	166	164	164
Harford	University of MD Harford Memorial Hospital ³	84	85	86	82	82	88	86	-
	University of MD Upper Chesapeake Medical Center	180	170	171	149	161	202	203	218
	<i>Harford County Total</i>	264	255	257	231	243	290	289	218
Howard	Howard County General Hospital	266	264	267	245	225	226	232	262
CENTRAL MARYLAND TOTAL		6,133	5,992	5,980	5,852	5,930	5,926	5,870	5,873
Cecil	ChristianaCare Union Hospital	84	83	82	72	75	109	108	99
Dorchester	University of MD Shore Medical Center at Dorchester ⁴	47	46	48	42	34	-	-	-
Kent	University of MD Shore Medical Center at Chestertown	30	26	26	21	12	5	5	5
Somerset	McCreedy Health Pavilion ⁵	4	3	3	3	3	-	-	-
Talbot	University of MD Shore Medical Center at Easton	112	112	120	104	97	98	98	98
Wicomico	TidalHealth Peninsula Regional Medical Center	292	281	289	288	266	271	283	275
Worcester	Atlantic General Hospital	48	45	45	44	40	46	45	43
EASTERN SHORE TOTAL		617	596	613	574	527	529	539	520
MARYLAND TOTAL		9,800	9,555	9,611	9,355	9,401	9,454	9,406	9,403

¹ On September 20, 2018, MHCC approved the conversion of UM Laurel Regional Hospital from an acute care general hospital to a freestanding medical facility (FMF). The FMF conversion occurred on January 1, 2019.

² On December 17, 2019, Bon Secours Hospital changed its name to Grace Medical Center. On October 15, 2021, MHCC approved the conversion of Grace Medical Center from an acute care general hospital to an FMF. The FMF conversion occurred on March 1, 2022.

³ University of Maryland Harford Memorial Hospital closed on February 6, 2024.

⁴ On April 18, 2019, MHCC approved the conversion of University of MD Shore Medical Center at Dorchester from an acute care general hospital to an FMF. The FMF conversion occurred on October 28, 2021.

⁵ On January 16, 2020, MHCC approved the conversion of the Edward W. McCreedy Memorial Hospital from an acute care general hospital to an FMF. On March 1, 2020, the FMF conversion occurred, the Edward W. McCreedy Memorial Hospital joined the TidalHealth network and the facility's name changed to McCreedy Health Pavilion.

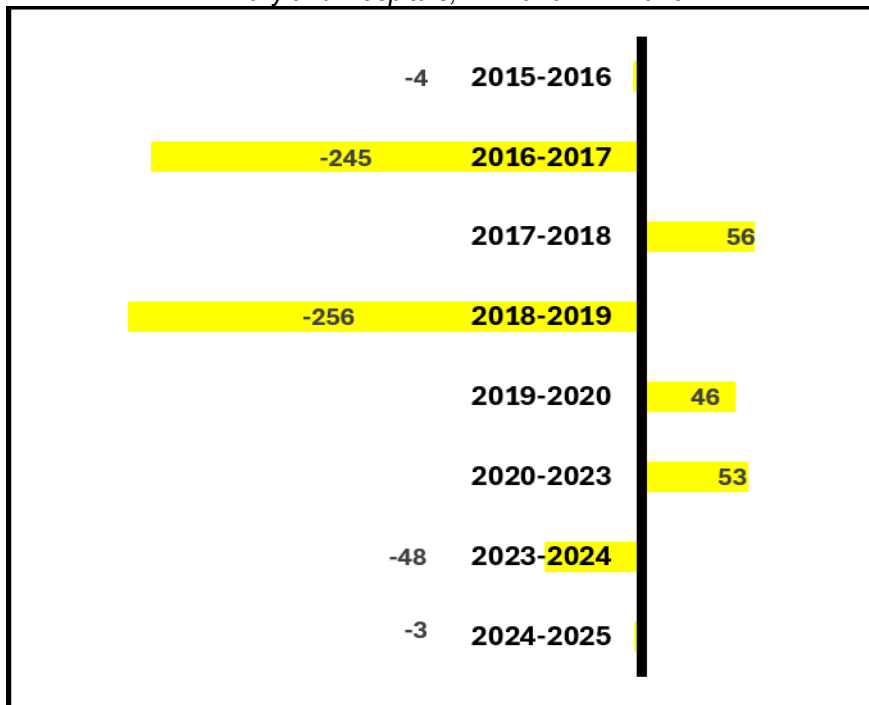
Source: MHCC ACHIs, FY 2015 – FY 2024

Table 3: Percent Change in Total Licensed Acute Care Hospital Beds, by Maryland Region: FY 2016 – FY 2025

Region	2016	2017	2018	2019	2020	2023	2024	2025	Total Change (2016 – 2025)
Western Maryland	-4.0%	2.2%	4.3%	1.1%	-0.8%	1.4%	-7.9%	3.0%	2.8%
Montgomery County	9.9%	-6.9%	-0.6%	-3.2%	3.0%	4.3%	2.1%	0.2%	-1.6%
Southern Maryland	-1.1%	-0.2%	3.0%	-5.6%	-1.7%	-1.1%	3.0%	-1.0%	-3.8%
Central Maryland	-2.0%	-2.3%	-0.2%	-2.1%	1.3%	-0.1%	-0.9%	0.1%	-4.2%
Eastern Shore	5.7%	-3.4%	2.9%	-6.4%	-8.2%	0.4%	1.9%	-3.5%	-15.7%
MARYLAND TOTAL	0.0%	-2.5%	0.6%	-2.7%	0.5%	0.6%	-0.5%	-0.03%	-4.1%

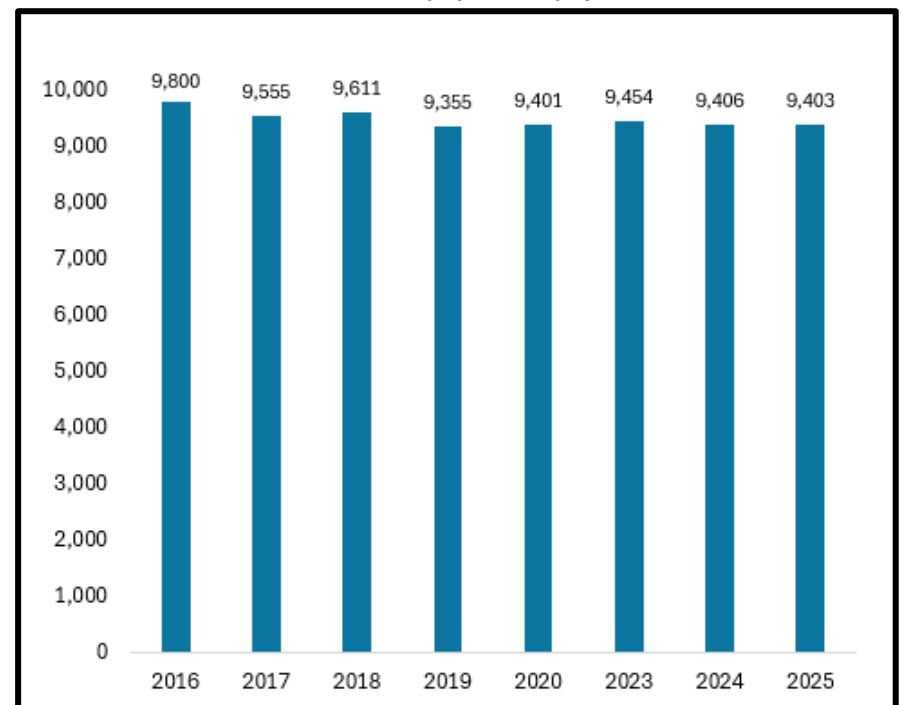
Source: MHCC ACHIs, FY 2016 – FY 2025

Figure 1: Year to Year Change in Total Licensed Acute Care Beds: Maryland Hospitals, FY 2016 - FY 2025



Source: MHCC ACHIs, FY 2016 – FY 2025

Figure 2: Total Licensed Acute Care Beds: Maryland Hospitals, FY 2016 – FY 2025



Source: MHCC ACHIs, FY 2016 – FY 2025

Table 4: Change in Number of Total Licensed Acute Care Beds by Region: Maryland Hospitals, FY 2024 vs. FY 2025

Region	Total Number of FY25 Hospitals	Net Change in Number of Total Licensed Beds	Percent Change from FY24 to FY25	Number of Hospitals with an Increase in Beds	Number of Hospitals with a Reduction in Beds
Western Maryland	4	20	3.0%	3	0
Montgomery County	6	3	0.2%	3	3
Southern Maryland	7	-10	-1.0%	2	4
Central Maryland	20	3	0.1%	8	9
Eastern Shore	5	-19	-3.5%	0	3
MARYLAND TOTAL	42	-3	-0.03%	16	19

Source: MHCC ACHIs FY 2024 and FY 2025.

Table 5: Allocation of Licensed Acute Care Beds by Service Maryland Hospitals, FY 2016 – FY 2025

Service Category	2016	2017	2018	2019	2020	2023	2024	2025
MSGA	7,850	7,595	7,653	7,485	7,412	7,504	7,472	7,500
Obstetric	832	820	826	803	800	786	767	750
Pediatric	396	400	385	353	343	338	332	335
Acute Psychiatric	722	740	747	714	846	826	835	818
TOTAL	9,800	9,555	9,611	9,355	9,401	9,454	9,406	9,403

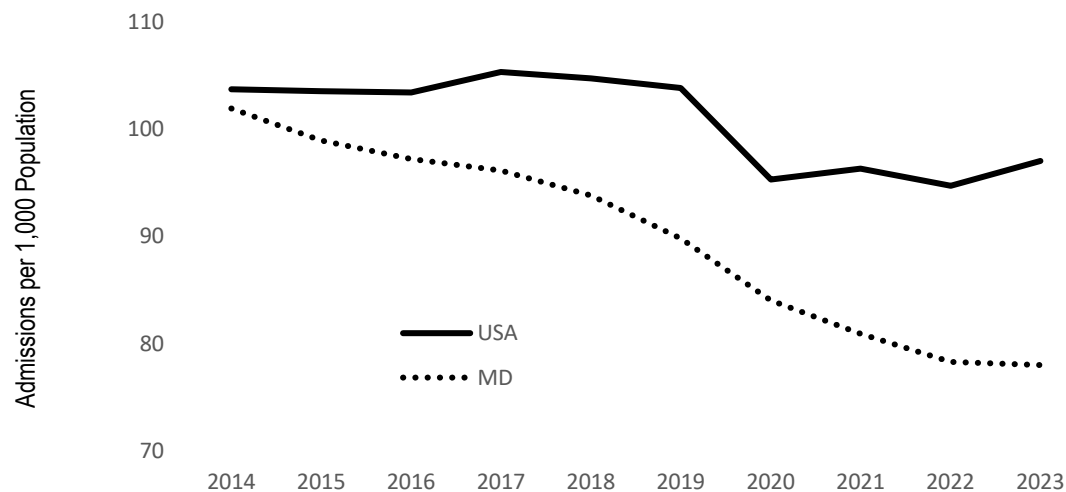
Source: MHCC ACHIs FY 2016 – FY 2025

Table 6: Allocation of Licensed Acute Care Beds by Service (Percentage), Maryland Hospitals, FY 2016 – FY 2025

Service Category	2016	2017	2018	2019	2020	2023	2024	2025
MSGA	80.1%	79.5%	79.6%	80.0%	78.8%	79.4%	79.4%	79.8%
Obstetric	8.5%	8.6%	8.6%	8.6%	8.5%	8.3%	8.2%	8.0%
Pediatric	4.0%	4.2%	4.0%	3.8%	3.6%	3.6%	3.5%	3.6%
Acute Psychiatric	7.4%	7.7%	7.8%	7.6%	9.0%	8.7%	8.9%	8.7%
TOTAL	100.0%	100.0%	100.0%	100.0%	100.0%	100.0%	100.0%	100.0%

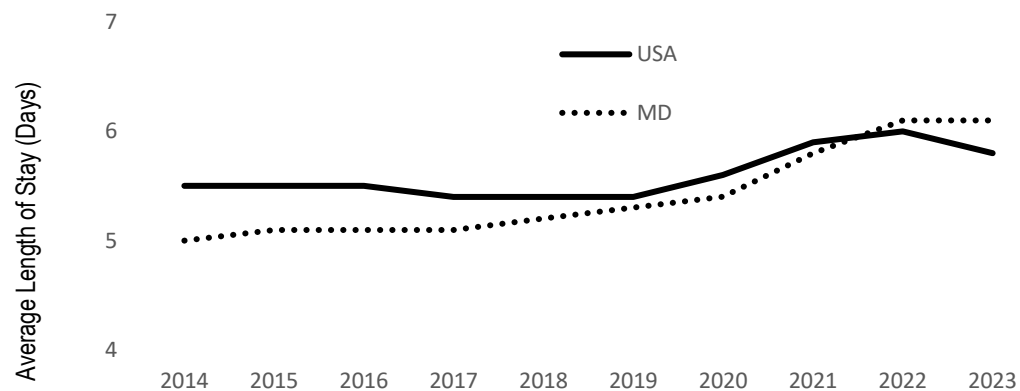
Source: MHCC ACHIs FY 2016 – FY 2025

Figure 3: Hospital Admissions per 1,000 Population All Hospital Unit Admissions (Excludes NH Unit Admissions) U.S. and Maryland 2014 - 2023



Source: AHA Hospital Statistics (2018, 2023, 2024 and 2025 Editions)

Figure 4: Hospital Average Length of Stay All Hospital Unit Admissions (Excludes NH Unit Admissions) U.S. and Maryland 2014-2023



Source: AHA Hospital Statistics (2018, 2023, 2024 and 2025 Editions)

Table 7: Critical Care Bed** Inventory: Maryland Hospitals, as of June 1, 2024

Jurisdiction / Region	Hospital	Critical Care Beds	
		Adult	Pediatric
Allegany	UPMC Western Maryland	13	0
Frederick	Frederick Health Hospital	20	0
Garrett	Garrett Regional Medical Center	2	0
Washington	Meritus Medical Center	24	0
WESTERN MARYLAND TOTAL		59	0
Montgomery	Adventist HealthCare Shady Grove Medical Center	22	0
	Adventist HealthCare White Oak Medical Center	32	0
	Holy Cross Germantown Hospital	13	0
	Holy Cross Hospital of Silver Spring	46	0
	MedStar Montgomery Medical Center	22	0
	Suburban Hospital	44	0
MONTGOMERY COUNTY TOTAL		179	0
Calvert	CalvertHealth Medical Center	6	0
Charles	University of MD Charles Regional Medical Center	10	0
Prince George's	Luminis Doctors Community Hospital	18	0
	Adventist HealthCare Fort Washington Medical Center	3	0
	MedStar Southern Maryland Hospital Center	24	0
	University of MD Capital Region Medical Center	40	0
St. Mary's	MedStar St. Mary's Hospital	12	0
SOUTHERN MARYLAND TOTAL		113	0
Anne Arundel	Luminis Anne Arundel Medical Center	38	0
	University of MD Baltimore Washington Medical Center	30	0
Baltimore City	Johns Hopkins Bayview Medical Center	52	0
	MedStar Good Samaritan Hospital	16	0
	MedStar Harbor Hospital	14	0
	MedStar Union Memorial Hospital	52	0
	Mercy Medical Center	20	0

Table 7: Critical Care Bed** Inventory: Maryland Hospitals, as of June 1, 2024

Jurisdiction / Region	Hospital	Critical Care Beds	
		Adult	Pediatric
Baltimore City (cont.)	Sinai Hospital of Baltimore	35	6
	Ascension Saint Agnes Hospital	30	0
	Johns Hopkins Hospital	116	40
	University of MD Medical Center	261	19
	University of MD Medical Center Midtown Campus	18	0
	University of MD Rehabilitation and Orthopedic Institute	0	0
Baltimore County	Greater Baltimore Medical Center	24	0
	MedStar Franklin Square Medical Center	38	0
	Northwest Hospital Center	16	0
	University of MD St. Joseph Medical Center	22	0
Carroll	Carroll Hospital Center	12	0
Harford	University of MD Upper Chesapeake Medical Center	13	0
Howard	Howard County General Hospital	16	0
CENTRAL MARYLAND TOTAL		823	65
Cecil	ChristianaCare Union Hospital	9	0
Kent	University of MD Shore Medical Center at Chestertown	0	0
Talbot	University of MD Shore Medical Center at Easton	10	0
Wicomico	TidalHealth Peninsula Regional Medical Center	42	0
Worcester	Atlantic General Hospital	6	0
EASTERN SHORE TOTAL		67	0
STATE OF MARYLAND TOTAL		1,241	65

Source: MHCC ACHI, FY 2025

** Critical Care Beds includes beds designated by the hospital as one of the following: Medical Surgical Intensive Care, Medical Cardiac Critical Care, Burn Critical Care, or Shock Trauma.

Table 8: Licensed Acute Care Beds with Monitoring Capability: Maryland Hospitals, FY 2025

Jurisdiction / Region	Hospital Name	FY 2025 Licensed Beds	Monitorable Beds	Monitorable as % of Licensed Beds
Allegany	UPMC Western Maryland	177	88	49.7%
Frederick	Frederick Health Hospital	261	261	100.0%
Garrett	Garrett Regional Medical Center	18	18	100.0%
Washington	Meritus Medical Center	239	225	94.1%
WESTERN MARYLAND TOTAL		695	592	85.2%
Montgomery	Adventist HealthCare Shady Grove Medical Center	360	160	44.4%
	Adventist HealthCare White Oak Medical Center	217	198	91.2%
	Holy Cross Germantown Hospital	96	66	68.8%
	Holy Cross Hospital of Silver Spring	346	249	72.0%
	MedStar Montgomery Medical Center	100	56	56.0%
	Suburban Hospital	253	132	52.2%
MONTGOMERY COUNTY TOTAL		1,372	861	62.8%
Calvert	CalvertHealth Medical Center	81	60	74.1%
Charles	University of MD Charles Regional Medical Center	99	92	92.9%
Prince George's	Luminis Doctors Community Hospital	218	124	56.9%
	Adventist HealthCare Fort Washington Medical Center	33	29	87.9%
	MedStar Southern Maryland Hospital Center	190	190	100.0%
	University of MD Capital Region Medical Center	228	122	53.5%
St. Mary's	MedStar St. Mary's Hospital	94	82	87.2%
SOUTHERN MARYLAND TOTAL		943	699	74.1%
Anne Arundel	Luminis Anne Arundel Medical Center	377	341	90.5%
	University of MD Baltimore Washington Medical Center	306	306	100.0%
Baltimore City	Johns Hopkins Bayview Medical Center	385	331	86.0%
	MedStar Good Samaritan Hospital	147	85	57.8%
	MedStar Harbor Hospital	119	71	59.7%
	MedStar Union Memorial Hospital	187	147	78.6%
	Mercy Medical Center	145	101	69.7%
	Sinai Hospital of Baltimore	399	161	40.4%

Table 8: Licensed Acute Care Beds with Monitoring Capability: Maryland Hospitals, FY 2025

Jurisdiction / Region	Hospital Name	FY 2025 Licensed Beds	Monitorable Beds	Monitorable as % of Licensed Beds
Baltimore City (cont.)	Ascension Saint Agnes Hospital	182	159	87.4%
	Johns Hopkins Hospital	1,145	733	64.0%
	University of MD Medical Center	741	679	91.6%
	University of MD Medical Center Midtown Campus	112	85	75.9%
	University of MD Rehabilitation and Orthopedic Institute	4	4	100.0%
Baltimore County	Greater Baltimore Medical Center	211	90	42.7%
	MedStar Franklin Square Medical Center	353	214	60.6%
	Northwest Hospital Center	199	80	40.2%
	University of MD St. Joseph Medical Center	217	199	91.7%
Carroll	Carroll Hospital Center	164	83	50.6%
Harford	University of MD Upper Chesapeake Medical Center	218	218	100.0%
Howard	Howard County General Hospital	262	169	64.5%
CENTRAL MARYLAND TOTAL		5,873	4,256	72.5%
Cecil	ChristianaCare Union Hospital	99	70	70.7%
Kent	University of MD Shore Medical Center at Chestertown	5	5	100.0%
Talbot	University of MD Shore Medical Center at Easton	98	58	59.2%
Wicomico	TidalHealth Peninsula Regional Medical Center	275	237	86.2%
Worcester	Atlantic General Hospital	43	40	93.0%
EASTERN SHORE TOTAL		520	410	78.8%
STATE TOTAL		9,403	6,818	72.5%

Source: MHCC Supplemental Survey: Inpatient Monitoring Capacity, FY 2025

Notes: Data are self-reported. Capacity for inpatient monitoring means cardiac monitoring is available for the reported number of beds. The calculated percentage reflects total licensed beds and does not necessarily reflect the actual complement of beds set up and staffed by the hospital.

Table 9: Trend in Hospitals and Licensed Acute Care Bed Capacity by Hospital System Affiliation Maryland Hospitals, FY 2016 – 2025

SYSTEM	HOSPITAL	2016	2017	2018	2019	2020	2023	2024	2025
University of MD Medical System UM Shore Regional Health UM Upper Chesapeake Health System [2014] UM Capital Region Health [2017]	University of MD Medical Center	772	750	767	789	806	739	710	741
	University of MD Medical Center Midtown Campus	107	87	90	97	100	121	116	112
	University of MD Baltimore Washington Medical Center	303	293	288	272	285	314	307	306
	University of MD Rehabilitation & Orthopedic Institute	7	4	3	3	2	4	4	4
	University of MD St. Joseph Medical Center	247	232	224	218	219	207	221	217
	University of MD Charles Regional Medical Center	110	89	109	98	99	104	99	99
	University of MD Shore Medical Center at Dorchester ¹	47	46	48	42	34	-	-	-
	University of MD Shore Medical Center at Chestertown	30	26	26	21	12	5	5	5
	University of MD Shore Medical Center at Easton	112	112	120	104	97	98	98	98
	University of MD Upper Chesapeake Medical Center	180	170	171	149	161	202	203	218
	University of MD Harford Memorial Hospital ²	84	85	86	82	82	88	86	-
	University of MD Laurel Regional Hospital ³	-	63	61	55	-	-	-	-
	University of MD Capital Region Medical Center ⁴	-	233	230	238	254	217	233	228
	SYSTEM TOTAL	1,999	2,190	2,223	2,168	2,151	2,099	2,082	2,028
The Johns Hopkins Health System Corporation	Johns Hopkins Hospital	1,129	1,131	1,091	1,114	1,095	1,079	1,105	1,145
	Johns Hopkins Bayview Medical Center	341	330	342	335	350	356	363	385
	Howard County General Hospital	266	264	267	245	225	226	232	262
	Suburban Hospital	236	222	230	233	228	226	240	253
	SYSTEM TOTAL	1,972	1,947	1,930	1,927	1,898	1,887	1,940	2,045
MedStar Health	MedStar Franklin Square Medical Center	364	353	348	347	338	354	357	353
	MedStar Good Samaritan Hospital	165	155	137	132	145	153	151	147
	MedStar Harbor Hospital	113	107	139	129	131	142	125	119
	MedStar Montgomery Medical Center	122	114	115	117	104	96	114	100
	MedStar Southern Maryland Hospital Center	208	192	182	176	182	188	197	190
	MedStar St. Mary's Hospital	91	103	109	96	93	105	100	94
	MedStar Union Memorial Hospital	211	209	192	185	185	191	189	187
	SYSTEM TOTAL	1,274	1,233	1,222	1,182	1,178	1,229	1,233	1,190

Table 9: Trend in Hospitals and Licensed Acute Care Bed Capacity by Hospital System Affiliation Maryland Hospitals, FY 2016 – 2025

SYSTEM	HOSPITAL	2016	2017	2018	2019	2020	2023	2024	2025
Lifebridge Health	Carroll Hospital Center	140	143	146	153	161	166	164	164
	Sinai Hospital of Baltimore	392	367	370	340	348	438	424	399
	Northwest Hospital Center	199	192	202	189	190	193	198	199
SYSTEM TOTAL		731	702	718	682	699	797	786	762
Trinity Health	Holy Cross Germantown Hospital	93	93	72	65	70	82	88	96
	Holy Cross Hospital of Silver Spring	423	409	403	395	377	353	340	346
SYSTEM TOTAL		516	502	475	460	447	435	428	442
Adventist Health	Adventist HealthCare Shady Grove Medical Center	290	256	266	248	329	371	361	360
	Adventist HealthCare White Oak Medical Center	230	204	204	191	178	213	226	217
	Adventist Fort Washington Medical Center ⁵	-	-	-	-	28	31	36	33
SYSTEM TOTAL		520	460	470	439	535	615	623	610
Luminis	Luminis Anne Arundel Medical Center ⁶	-	-	-	-	349	397	377	377
	Luminis Doctors Community Hospital ⁷	-	-	-	-	206	200	208	218
SYSTEM TOTAL		-	-	-	-	555	597	585	595
Ascension ¹³	Ascension Saint Agnes Hospital	251	263	254	243	247	174	181	182
Bon Secours ¹³	Bon Secours Hospital ⁸	72	72	69	68	71	-	-	-
TidalHealth ¹³	TidalHealth Peninsula Regional Medical Center ⁹	-	-	-	-	266	271	283	275
UPMC ¹³	UPMC Western Maryland ¹⁰	-	-	-	-	191	200	175	177
WVU Medicine ¹³	Garrett Regional Medical Center ¹¹	-	-	-	-	-	21	18	18
TOTAL OF SYSTEM HOSPITALS		7,335	7,369	7,361	7,169	8,238	8,325	8,334	8,324
INDEPENDENT HOSPITALS		2016	2017	2018	2019	2020	2023	2024	2025
Anne Arundel Medical Center ⁶		375	370	385	349	-	-	-	-
Atlantic General Hospital		48	45	45	44	40	46	45	43
CalvertHealth Medical Center		77	76	74	71	73	80	80	81
Doctors Community Hospital ⁷		163	190	210	190	-	-	-	-
Edward W. McCready Memorial Hospital ¹²		4	3	3	3	3	-	-	-
Fort Washington Medical Center ⁵		34	32	32	27	-	-	-	-
Frederick Health Hospital		233	239	257	266	269	264	257	261
Garrett County Memorial Hospital ¹¹		25	27	27	27	26	-	-	-
Greater Baltimore Medical Center		231	232	231	239	257	235	228	211
Mercy Medical Center		184	183	178	174	183	147	129	145

Table 9: Trend in Hospitals and Licensed Acute Care Bed Capacity by Hospital System Affiliation Maryland Hospitals, FY 2016 – 2025

SYSTEM	HOSPITAL	2016	2017	2018	2019	2020	2023	2024	2025
INDEPENDENT HOSPITALS									
	Meritus Medical Center	223	227	237	236	237	248	225	239
	Peninsula Regional Medical Center ⁹	292	281	289	288	-	-	-	-
	ChristianaCare Union Hospital	84	83	82	72	75	109	108	99
	Western Maryland Regional Medical Center ¹⁰	195	198	200	200	-	-	-	-
	Laurel Regional Hospital ²	60	-	-	-	-	-	-	-
	Prince George's Hospital Center ³	237	-	-	-	-	-	-	-
INDEPENDENT HOSPITALS TOTAL		2,465	2,186	2,250	2,186	1,163	1,129	1,072	1,079
SUM TOTAL		9,800	9,555	9,611	9,355	9,401	9,454	9,406	9,403

¹ On April 18, 2019, MHCC approved the conversion of University of MD Shore Medical Center at Dorchester from an acute care general hospital to a freestanding medical facility (FMF) and the facility was licensed as an FMF effective October 28, 2021.

² University of Maryland Harford Memorial Hospital closed on February 6, 2024.

³ Prior to 2017, Laurel Regional Hospital was an independent hospital. In 2017, it joined the University of MD Medical system. MHCC approved conversion to an FMF on September 20, 2018, and the facility was licensed as an FMF effective January 1, 2019.

⁴ Prior to 2017, Prince George's Hospital Center was an independent hospital. In 2017, it joined the University of MD Medical system.

⁵ Prior to 2020, Fort Washington Medical Center was an independent hospital. In 2020, it joined the Adventist Health system.

⁶ Prior to 2020, Anne Arundel Medical Center was an independent hospital. In 2020, it became part of the Luminis Health system.

⁷ Prior to 2020 Doctor's Community Hospital was an independent hospital. In 2020, it became part of the Luminis Health system.

⁸ On December 17, 2019, Bon Secours Hospital changed its name to Grace Medical Center. On October 15, 2021, MHCC approved the conversion of Grace Medical Center from an acute care general hospital to a freestanding medical facility (FMF) and the facility was licensed as an FMF effective March 1, 2022.

⁹ Prior to 2020, Peninsula Regional Medical Center was an independent hospital. In 2020, Peninsula Regional Medical Center merged with Nanticoke Health Services of Delaware and the health system was officially renamed TidalHealth Services.

¹⁰ Prior to 2020, Western MD Regional Medical Center was an independent hospital. In 2020, it became part of the University of Pittsburgh Medical system.

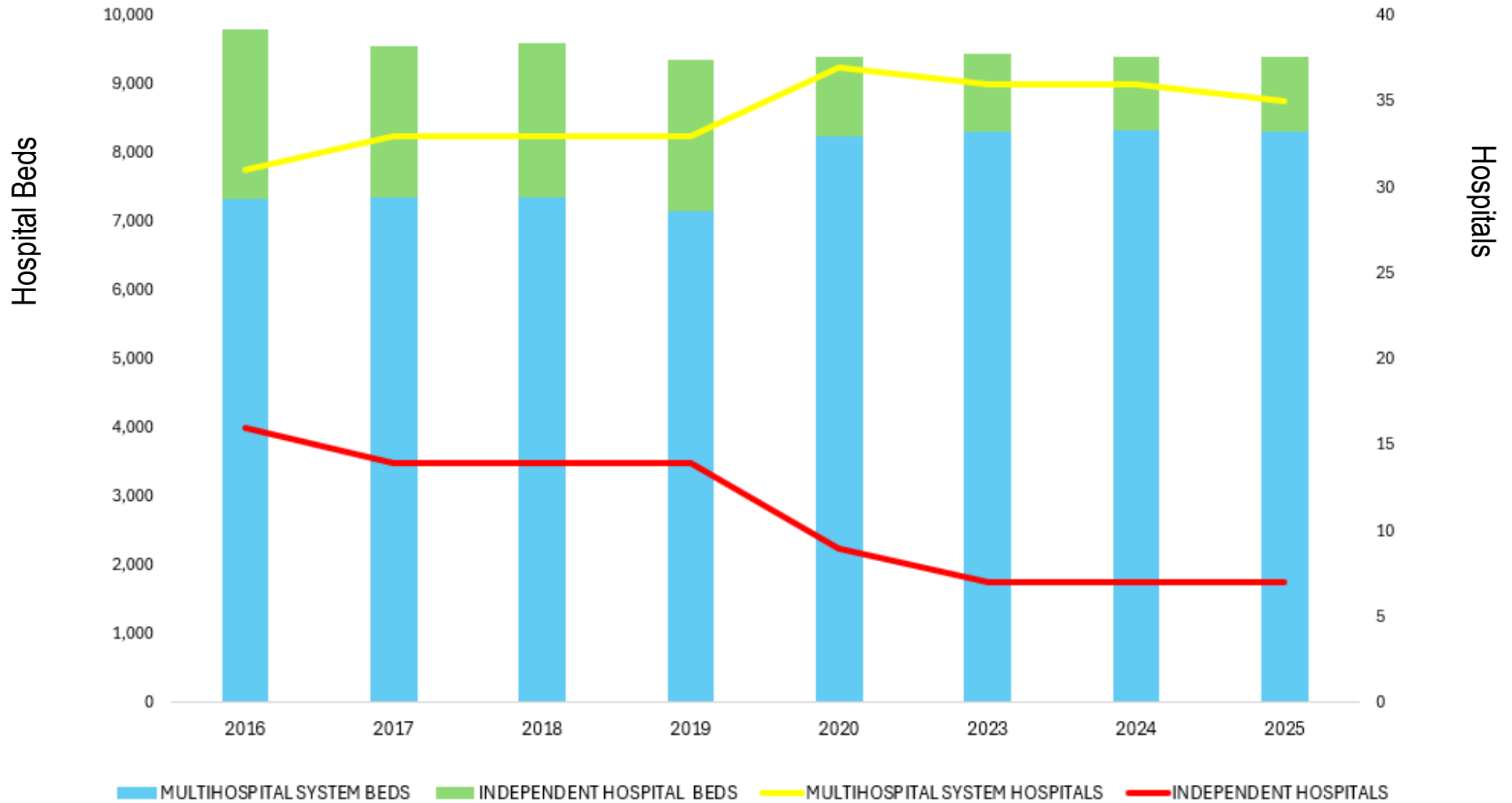
¹¹ In 2015, Garrett County Memorial Hospital changed its name to Garrett Regional Medical Center. Prior to July 1, 2022, Garrett Regional Medical Center was an independent hospital. On July 1, 2022, Garrett Regional officially became a full member of the WVU Health System.

¹² On January 16, 2020, MHCC approved the conversion of the Edward W. McCready Memorial Hospital from an acute care general hospital to a freestanding medical facility (FMF) and the facility was licensed as an FMF effective March 1, 2020.

¹³ These systems include non-Maryland hospitals. Only Maryland hospital data is shown in this table.

Source: MHCC ACHIs, FY 2015 – FY 2024

Figure 5: Distribution of Hospital Beds Between Multi-hospital Systems and Independent Hospitals, Maryland FY 2016 - FY 2025



Source: MHCC ACHIs, FY 2016 – FY 2025

Table 10: Multi-hospital Systems and Independent Hospitals and Beds by System Status Maryland FY 2016 – FY 2025

System Status	2016	2017	Annual Change	2018	Annual Change	2019	Annual Change	2020	Annual Change	2023	Annual Change	2024	Annual Change	2025	Annual Change	Change 2016-25
Multi-hospital System Hospitals	31	33		33		33		37		36		36		35		
Beds	7,335	7,369	0.46%	7,361	-0.11%	7,169	-2.61%	8,238	14.91%	8,325	1.06%	8,334	0.11%	8,324	-0.12%	13.48%
Percent of Maryland Hospitals	66%	70%		70%		70%		80%		84%		84%		83%		
Percent of Beds	75%	77%		77%		77%		88%		88%		89%		89%		
Independent Hospitals	16	14		14		14		9		7		7		7		
Beds	2,465	2,186	-11.32%	2,250	2.93%	2,186	-2.84%	1,163	-46.80%	1,129	-2.92%	1,072	-5.05%	1,079	0.65%	-56.23%
Percent of Maryland Hospitals	34%	30%		30%		30%		20%		16%		16%		17%		
Percent of Beds	25%	23%		23%		23%		12%		12%		11%		11%		
Total Acute General Hospitals	47	47		47		47		46		43		43		42		
TOTALS	9,800	9,555	-2.50%	9,611	0.59%	9,355	-2.66%	9,401	0.49%	9,454	0.56%	9,406	-0.51%	9,403	-0.03%	-4.05%

Source: MHCC ACHIs, FY 2016 – FY 2025

Table 11: Maryland Acute Care General Hospital Observation Services, June 1, 2024

Hospital	Distinct Unit Observation Beds Only	Licensed Beds Only	Combination of Distinct Unit Observation and Licensed Beds	Distinct Unit Observation Beds Available	Daily Census / Observation Patients
UPMC Western Maryland	✓			28	23
Frederick Health Hospital			✓	22	45
Garrett Regional Medical Center			✓		10
Meritus Medical Center			✓	20	41
WESTERN MARYLAND TOTAL	1	0	3	70	119
Adventist HealthCare Shady Grove Medical Center			✓	18	35
Adventist HealthCare White Oak Medical Center		✓			28
Holy Cross Germantown Hospital			✓		7
Holy Cross Hospital of Silver Spring			✓	12	16
MedStar Montgomery Medical Center		✓			18
Suburban Hospital			✓	15	28
MONTGOMERY COUNTY TOTAL	0	2	4	45	132
CalvertHealth Medical Center	✓			14	11
University of MD Charles Regional Medical Center		✓			6
Luminis Doctors Community Hospital		✓			28
Adventist HealthCare Fort Washington Medical Center		✓			2
University of MD Capital Region Medical Center			✓	20	15
SOUTHERN MARYLAND TOTAL	1	3	1	34	62
Ascension Saint Agnes Hospital		✓			32
Carroll Hospital Center			✓	22	26
Greater Baltimore Medical Center		✓			13
Howard County General Hospital			✓	23	31
Johns Hopkins Bayview Medical Center		✓			20
Johns Hopkins Hospital		✓			53
Luminis Anne Arundel Medical Center			✓	34	66
MedStar Franklin Square Medical Center		✓			16
MedStar Good Samaritan Hospital		✓			17
MedStar Harbor Hospital		✓			26
MedStar Union Memorial Hospital		✓			25

Table 11: Maryland Acute Care General Hospital Observation Services, June 1, 2024

Hospital	Distinct Unit Observation Beds Only	Licensed Beds Only	Combination of Distinct Unit Observation and Licensed Beds	Distinct Unit Observation Beds Available	Daily Census / Observation Patients
Mercy Medical Center			✓		46
Northwest Hospital Center		✓			27
Sinai Hospital of Baltimore		✓			27
University of MD Baltimore Washington Medical Center		✓			18
University of MD Medical Center			✓	10	12
University of MD Medical Center Midtown Campus			✓		5
University of MD St. Joseph Medical Center			✓	17	25
University of MD Upper Chesapeake Medical Center		✓			30
CENTRAL MARYLAND TOTAL	0	12	7	106	515
ChristianaCare Union Hospital			✓	1	11
University of MD Shore Medical Center at Chestertown			✓	10	1
University of MD Shore Medical Center at Easton			✓	10	14
TidalHealth Peninsula Regional Medical Center		✓			27
Atlantic General Hospital		✓			28
EASTERN SHORE TOTAL	0	2	3	21	81
MARYLAND TOTAL	2	19	18	276	909

Source: MHCC Supplemental Survey: Observation Services, FY 2025

Table 12: Summary - Acute Care Hospital Observation Beds, June 1, 2024

Observation Services	Total Hospitals	Total Distinct Unit Observation Beds
Distinct Unit Observation Beds Only	2	42
Licensed Beds Only	19	-
Combined Distinct Unit / Licensed Observation Beds	18	234
Total Number of Distinct Unit Observation Beds, All Hospitals	20	276

Source: MHCC Supplemental Survey: Observation Beds, FY 2025

Table 13: Inventory of Emergency Department / Freestanding Medical Facility (FMF) Treatment Capacity: Maryland, June 1, 2024

Jurisdiction / Region	Hospital	Treatment Spaces			Non-Treatment Spaces
		Total Treatment Spaces	Monitored Spaces	Non- Monitored Spaces	
Allegany	UPMC Western Maryland	54	43	11	1
Frederick	Frederick Health Hospital	87	77	10	1
Garrett	Garrett Regional Medical Center	13	12	1	2
Washington	Meritus Medical Center	60	49	11	1
WESTERN MARYLAND TOTAL		214	181	33	5
Montgomery	**Adventist HealthCare Germantown Emergency Center	21	16	5	2
	Adventist HealthCare Shady Grove Medical Center	69	31	38	0
	Adventist HealthCare White Oak Medical Center	47	45	2	1
	Holy Cross Germantown Hospital	22	19	3	3
	Holy Cross Hospital of Silver Spring	57	36	21	22
	MedStar Montgomery Medical Center	39	34	5	3
	Suburban Hospital	57	28	29	8
MONTGOMERY COUNTY TOTAL		312	209	103	39
Calvert	CalvertHealth Medical Center	35	27	8	2
Charles	University of MD Charles Regional Medical Center	48	38	10	3
Prince George's	Adventist HealthCare Fort Washington Medical Center	15	13	2	8
	Luminis Doctors Community Hospital	53	32	21	4
	MedStar Southern Maryland Hospital Center	51	38	13	3
	**University of MD Bowie Health Center	27	22	5	0
	University of MD Capital Region Medical Center	52	52	0	2
	**University of MD Laurel Regional Hospital	20	20	0	4
St. Mary's	MedStar St. Mary's Hospital	38	28	10	2
SOUTHERN MARYLAND TOTAL		339	270	69	28
Anne Arundel	Luminis Anne Arundel Medical Center	104	87	17	14
	University of MD Baltimore Washington Medical Center	66	47	19	1
Baltimore City	Ascension Saint Agnes Hospital	68	53	15	0
	**Grace Medical	15	11	4	12
	Johns Hopkins Bayview Medical Center	56	40	16	10

Table 13: Inventory of Emergency Department / Freestanding Medical Facility (FMF) Treatment Capacity: Maryland, June 1, 2024

Jurisdiction / Region	Hospital	Treatment Spaces			Non-Treatment Spaces
		Total Treatment Spaces	Monitored Spaces	Non- Monitored Spaces	
Baltimore City (cont.)	Johns Hopkins Hospital	89	55	34	1
	MedStar Good Samaritan Hospital	33	31	2	7
	MedStar Harbor Hospital	30	22	8	1
	MedStar Union Memorial Hospital	56	33	23	1
	Mercy Medical Center	50	33	17	2
	Sinai Hospital of Baltimore	130	101	29	1
	University of MD Medical Center	89	72	17	1
	University of MD Medical Center Midtown Campus	28	21	7	7
Baltimore County	Greater Baltimore Medical Center	54	30	24	1
	MedStar Franklin Square Medical Center	86	75	11	7
	Northwest Hospital Center	53	38	15	4
	University of MD St. Joseph Medical Center	38	31	7	4
Carroll	Carroll Hospital Center	42	28	14	6
Harford	University of MD Upper Chesapeake Medical Center	48	43	5	3
	**University of MD Upper Chesapeake Medical Center at Aberdeen [^]	23	19	4	1
Howard	Howard County General Hospital	80	55	25	2
CENTRAL MARYLAND TOTAL		1,238	925	313	86
Cecil	ChristianaCare Union Hospital	36	26	10	4
Dorchester	**University of MD Shore Medical Center at Cambridge	22	19	3	0
Kent	University of MD Shore Medical Center at Chestertown	17	16	1	0
Queen Anne's	** University of Maryland Shore Emergency Center at Queenstown	13	13	0	1
Somerset	**McCready Health Pavilion	7	7	0	1
Talbot	University of MD Shore Medical Center at Easton	36	32	4	2
Wicomico	TidalHealth Peninsula Regional Medical Center	62	53	9	0
Worcester	Atlantic General Hospital	30	7	23	5
EASTERN SHORE TOTAL		223	173	50	13
STATE OF MARYLAND TOTAL		2,326	1,758	568	171

Table 14: Trends in Emergency Department / Freestanding Medical Facilities Treatment Capacity: Maryland, June 1, 2015 - June 1, 2024

Jurisdiction / Region	Hospital	Total Treatment Spaces								
		2015	2016	2017	2018	2019	2020	2022	2023	2024
Allegany	UPMC Western Maryland	53	53	53	46	53	54	54	54	54
Frederick	Frederick Health Hospital	45	56	57	58	56	56	48	48	77
Garrett	Garrett Regional Medical Center	13	13	13	13	13	13	13	13	13
Washington	Meritus Medical Center	55	55	55	55	55	55	55	55	60
WESTERN MARYLAND TOTAL		166	177	178	172	177	178	170	170	214
Montgomery	**Adventist HealthCare Germantown Emergency Center	21	21	21	21	21	21	21	21	21
	Adventist HealthCare Shady Grove Medical Center	64	64	64	64	64	69	69	69	69
	Adventist HealthCare White Oak Medical Center	26	26	26	26	26	47	47	47	47
	Holy Cross Germantown Hospital	14	14	14	14	14	14	14	22	22
	Holy Cross Hospital of Silver Spring	61	64	64	64	64	66	67	67	57
	MedStar Montgomery Medical Center	41	41	39	39	39	39	39	39	39
	Suburban Hospital	41	41	41	44	45	45	45	57	57
MONTGOMERY COUNTY TOTAL		268	271	269	272	273	301	302	322	312
Calvert	CalvertHealth Medical Center	34	34	34	34	34	34	35	35	35
Charles	University of MD Charles Regional Medical Center	38	38	38	38	38	38	38	38	48
Prince George's	Adventist HealthCare Fort Washington Medical Center	18	18	18	18	17	17	17	17	15
	Luminis Doctors Community Hospital	55	55	55	55	55	55	53	53	53
	MedStar Southern Maryland Hospital Center	39	39	39	39	38	32	50	51	51
	**University of MD Bowie Health Center	15	27	27	27	27	27	27	27	27
	University of MD Capital Region Medical Center	46	46	46	46	46	46	52	52	52
	**University of MD Laurel Regional Hospital	31	31	31	31	27	27	27	20	20
St. Mary's	MedStar St. Mary's Hospital	32	32	32	32	32	38	38	38	38
SOUTHERN MARYLAND TOTAL		308	320	320	320	314	314	337	331	339

Table 14: Trends in Emergency Department / Freestanding Medical Facilities Treatment Capacity: Maryland, June 1, 2015 - June 1, 2024

Jurisdiction / Region	Hospital	Total Treatment Spaces								
		2015	2016	2017	2018	2019	2020	2022	2023	2024
Anne Arundel	Luminis Anne Arundel Medical Center	67	67	67	67	67	67	78	78	104
	University of MD Baltimore Washington Medical Center	68	68	65	66	66	66	66	66	66
Baltimore City	Ascension Saint Agnes Hospital	65	69	69	69	69	69	69	70	68
	**Grace Medical	28	28	28	28	24	24	27	15	15
	Johns Hopkins Bayview Medical Center	45	45	50	50	67	54	59	56	56
	Johns Hopkins Hospital – Main ED	73	73	73	73	73	73	64	89	89
	Johns Hopkins Hospital – Pediatric ED	35	35	35	35	35	35	35	35	35
	MedStar Good Samaritan Hospital	42	42	42	42	42	56	34	34	33
	MedStar Harbor Hospital	35	29	28	28	35	35	33	28	30
	MedStar Union Memorial Hospital	55	55	55	55	54	56	56	56	56
	Mercy Medical Center	57	57	51	51	51	52	51	50	50
	Sinai Hospital of Baltimore	67	79	79	81	96	82	90	90	130
	University of MD Medical Center	123	109	92	92	96	96	89	89	89
	University of MD Medical Center Midtown Campus	29	29	29	28	28	28	28	28	28
Baltimore County	Greater Baltimore Medical Center	45	45	45	45	49	54	54	54	54
	MedStar Franklin Square Medical Center	96	96	96	96	98	98	86	86	86
	Northwest Hospital Center	43	61	61	61	59	63	62	54	53
	University of MD St. Joseph Medical Center	38	38	38	38	38	38	38	38	38
Carroll	Carroll Hospital Center	43	43	43	43	43	43	42	42	42
Harford	University of MD Harford Memorial Hospital^	27	27	28	28	28	29	29	29	-
	**University of MD Upper Chesapeake Medical Center at Aberdeen^	-	-	-	-	-	-	-	-	23
	University of MD Upper Chesapeake Medical Center	54	54	54	53	53	49	49	49	48
Howard	Howard County General Hospital	55	74	74	83	83	83	83	65	80
CENTRAL MARYLAND TOTAL		1,190	1,223	1,202	1,212	1,254	1,250	1,222	1,201	1238
Cecil	ChristianaCare Union Hospital	32	32	32	32	32	32	32	32	36
Dorchester	**University of MD	18	18	18	18	18	18	22	22	22
	Shore Medical Center at Cambridge									

Table 14: Trends in Emergency Department / Freestanding Medical Facilities Treatment Capacity: Maryland, June 1, 2015 - June 1, 2024

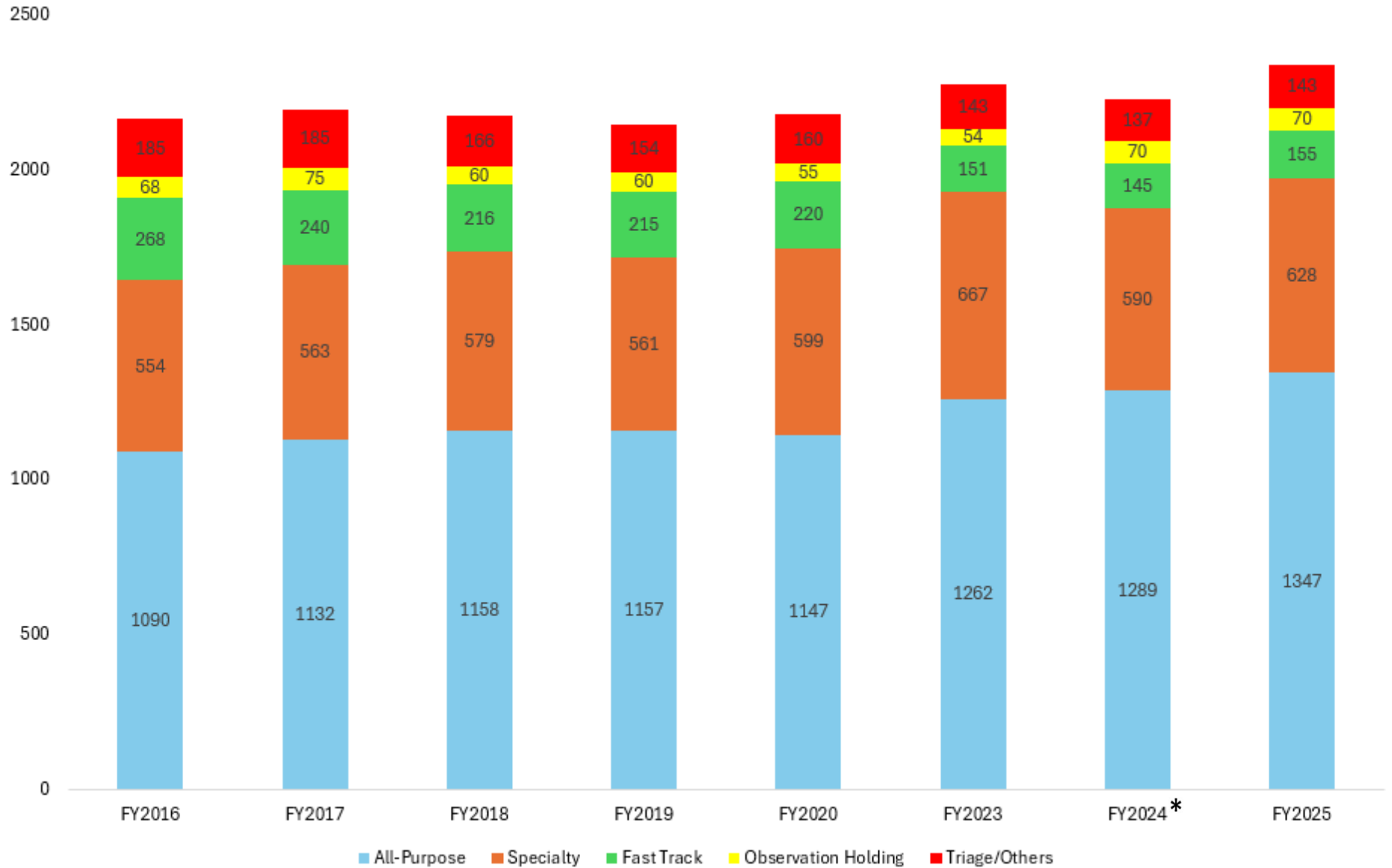
Jurisdiction / Region	Hospital	Total Treatment Spaces								
		2015	2016	2017	2018	2019	2020	2022	2023	2024
Kent	University of Maryland Shore Medical Center at Chestertown	17	17	17	17	17	17	17	17	17
Queen Anne's	** University of Maryland Shore Emergency Center at Queenstown	14	14	14	14	14	14	14	13	13
Somerset	** McCready Health Pavilion	8	8	8	8	8	7	7	7	7
Talbot	University of MD Shore Medical Center at Easton	34	34	32	32	34	34	34	36	36
Wicomico	TidalHealth Peninsula Regional Medical Center	51	51	58	58	62	62	62	62	62
Worcester	Atlantic General Hospital	30	30	30	30	30	30	30	30	30
EASTERN SHORE TOTAL		204	204	209	209	215	214	218	219	223
STATE OF MARYLAND TOTAL		2,136	2,195	2,178	2,185	2,233	2,257	2,249	2,243	2,326

Sources: MHCC Supplemental Surveys: Emergency Department Treatment, (FY 2016-2025)

** Freestanding Medical Facility (FMF)

^ Harford Memorial Hospital closed on February 6, 2024. University of MD Upper Chesapeake Medical Center at Aberdeen, a Freestanding Medical Facility, opened that day.

Figure 6: Change in Number of Emergency Treatment Spaces by Type of Space: Maryland, FY 2016 – FY 2025



Source: MHCC Supplemental Surveys: Emergency Department Treatment Spaces, (FY 2016 – FY 2025)

* The data displayed here differs slightly from the FY2024 data reported in the prior version of the chartbook. MHCC staff audited the prior chartbook and have corrected a minor arithmetical error.

Table 15: Surgical Services Capacity by Hospital and Type of Operating Room: Maryland Hospitals, June 1, 2024

Hospital	Inpatient General Purpose	Outpatient General Purpose	Mixed Use General Purpose	Inpatient Special Purpose	Outpatient Special Purpose	Mixed Use Special Purpose	Other Operating Rooms	Total Operating Rooms
Adventist HealthCare Fort Washington Medical Center			3					3
Adventist HealthCare Shady Grove Medical Center			16					16
Adventist HealthCare White Oak Medical Center			5	2			1	8
Ascension Saint Agnes Hospital						19		19
Atlantic General Hospital			4					4
CalvertHealth Medical Center			6					6
Carroll Hospital Center			10					10
ChristianaCare Union Hospital			4					4
Frederick Health Hospital			11					11
Garrett Regional Medical Center			3					3
Greater Baltimore Medical Center			25					25
Holy Cross Germantown Hospital			5					5
Holy Cross Hospital of Silver Spring			15					15
Howard County General Hospital			10					10
Johns Hopkins Bayview Medical Center			14					14
Johns Hopkins Hospital		8	46		7			61
Luminis Anne Arundel Medical Center			26					26
Luminis Doctors Community Hospital		4	9					13
MedStar Franklin Square Medical Center			13			1		14
MedStar Good Samaritan Hospital			8					8
MedStar Harbor Hospital			10					10
MedStar Montgomery Medical Center			7					7
MedStar Southern Maryland Hospital Center			10					10
MedStar St. Mary's Hospital			6					6
MedStar Union Memorial Hospital			19					19
Mercy Medical Center			23				3	26
Meritus Medical Center			11					11
Northwest Hospital Center			10					10
Sinai Hospital of Baltimore	1	2	10	2		6		21
Suburban Hospital			13	1				14

Table 15: Surgical Services Capacity by Hospital and Type of Operating Room: Maryland Hospitals, June 1, 2024

Hospital	Inpatient General Purpose	Outpatient General Purpose	Mixed Use General Purpose	Inpatient Special Purpose	Outpatient Special Purpose	Mixed Use Special Purpose	Other Operating Rooms	Total Operating Rooms
TidalHealth Peninsula Regional Medical Center			10			3		13
University of MD Baltimore Washington Medical Center			16					16
University of MD Capital Region Medical Center			8					8
University of MD Charles Regional Medical Center			4					4
University of MD Medical Center			23		12			35
University of MD Medical Center Midtown Campus			8					8
University of MD Rehabilitation and Orthopedic Institute			6					6
University of MD Shore Medical Center at Chestertown			2					2
University of MD Shore Medical Center at Easton			6					6
University of MD Upper Chesapeake Medical Center			11					11
University of MD St. Joseph Medical Center			12			3		15
UPMC Western Maryland			14					14
MARYLAND TOTAL	1	14	472	5	19	32	4	547

Source: MHCC Supplemental Survey: Surgical Services Capacity, FY 2025

Table 16: Dedicated Cesarean Section Operating Rooms and Procedure Rooms by Hospital: Maryland Hospitals, June 1, 2024

County	Hospital	Dedicated Cesarean Section ORs		Procedure Rooms*	
		Inside Sterile Area	Outside Sterile Area	Inside Sterile Area	Outside Sterile Area
Allegany	UPMC Western Maryland	2			7
Frederick	Frederick Health Hospital	2		1	2
Garrett	Garrett Regional Medical Center				2
Washington	Meritus Medical Center	2		1	2
WESTERN MARYLAND TOTAL		6	0	2	13
Montgomery	Adventist HealthCare Shady Grove Medical Center	3		3	
	Adventist HealthCare White Oak Medical Center	2		2	2
	Holy Cross Germantown Hospital	2		1	2
	Holy Cross Hospital of Silver Spring	4		1	3
	MedStar Montgomery Medical Center	2		3	
	Suburban Hospital			2	
MONTGOMERY COUNTY TOTAL		13	0	12	7

Table 16: Dedicated Cesarean Section Operating Rooms and Procedure Rooms by Hospital: Maryland Hospitals, June 1, 2024

County	Hospital	Dedicated Cesarean Section ORs		Procedure Rooms*	
		Inside Sterile Area	Outside Sterile Area	Inside Sterile Area	Outside Sterile Area
Calvert	CalvertHealth Medical Center	1			4
Chares	University of MD Charles Regional Medical Center		1		1
Prince George's	Luminis Doctors Community Hospital			4	
	Adventist HealthCare Fort Washington Medical Center				1
	MedStar Southern Maryland Hospital Center	2		2	6
	University of MD Capital Region Medical Center	2		4	
St. Mary's	MedStar St. Mary's Hospital	1			3
SOUTHERN MARYLAND TOTAL		6	1	10	15
Anne Arundel	Luminis Anne Arundel Medical Center	3			4
	University of MD Baltimore Washington Medical Center	2		1	5
Baltimore City	Johns Hopkins Bayview Medical Center	2		1	7
	MedStar Good Samaritan Hospital			3	
	MedStar Harbor Hospital	1		4	
	MedStar Union Memorial Hospital			3	
	Mercy Medical Center	2		1	25
	Sinai Hospital of Baltimore	2		6	
	Ascension Saint Agnes Hospital	2			1
	Johns Hopkins Hospital	3			
	University of MD Medical Center	3		10	13
	University of MD Medical Center Midtown Campus			1	3
	University of MD Rehabilitation and Orthopedic Institute				1
Baltimore County	Greater Baltimore Medical Center	3		3	9
	MedStar Franklin Square Medical Center	3			7
	Northwest Hospital Center			3	
	University of MD St. Joseph Medical Center	2			5
Carroll	Carroll Hospital Center	2			3
Harford	University of MD Upper Chesapeake Medical Center	2		1	
Howard	Howard County General Hospital	2		2	1
CENTRAL MARYLAND TOTAL		34	0	39	84

Table 16: Dedicated Cesarean Section Operating Rooms and Procedure Rooms by Hospital: Maryland Hospitals, June 1, 2024

County	Hospital	Dedicated Cesarean Section ORs		Procedure Rooms*	
		Inside Sterile Area	Outside Sterile Area	Inside Sterile Area	Outside Sterile Area
Cecil	ChristianaCare Union Hospital	1		3	2
Kent	University of MD Shore Medical Center at Chestertown			1	
Talbot	University of MD Shore Medical Center at Easton	1			1
Wicomico	TidalHealth Peninsula Regional Medical Center	2		3	1
Worcester	Atlantic General Hospital			1	3
EASTERN SHORE TOTAL		4	0	8	7
STATE OF MARYLAND TOTAL		63	1	71	126

Source: MHCC Supplemental Survey: Surgical Services Capacity, FY 2025

*Note: Procedure Rooms include dedicated cystoscopy and endoscopy rooms and other procedure rooms

Table 17: Trends in Number of Surgical Rooms: Maryland Hospitals, 2022 – 2024

Jurisdiction / Region	Hospital	June 1, 2022			June 1, 2023			June 1, 2024		
		Total Operating Rooms	Total Procedure Rooms	Total Cesarean Section ORs	Total Operating Rooms	Total Procedure Rooms	Total Cesarean Section ORs	Total Operating Rooms	Total Procedure Rooms	Total Cesarean Section ORs
Allegany	UPMC Western Maryland	14	6	2	14	6	2	14	7	2
Frederick	Frederick Health Hospital	11	3	2	11	3	2	11	3	2
Garrett	Garrett Regional Medical Center	3	2	0	3	2	0	3	2	0
Washington	Meritus Medical Center	11	3	2	11	3	2	11	3	2
WESTERN MARYLAND TOTAL		39	14	6	39	14	6	39	15	6
Montgomery	Adventist HealthCare Shady Grove Medical Center	16	3	3	16	3	3	16	3	3
	Adventist HealthCare White Oak Medical Center	9	3	2	8	4	2	8	4	2
	Holy Cross Germantown Hospital	5	3	2	5	3	2	5	3	2
	Holy Cross Hospital of Silver Spring	14	5	4	14	5	4	15	4	4
	MedStar Montgomery Medical Center	7	2	2	7	2	2	7	3	2
	Suburban Hospital	14	1	0	14	1	0	14	2	0
MONTGOMERY COUNTY TOTAL		65	17	13	64	18	13	65	19	13
Calvert	CalvertHealth Medical Center	6	4	1	6	4	1	6	4	1
Chares	University of MD Charles Regional Medical Center	4	2	1	4	2	1	4	1	1
Prince George's	Luminis Doctors Community Hospital	13	4	0	13	4	0	13	4	0
	Adventist HealthCare Fort Washington Medical Center	3	1	0	3	1	0	3	1	0
	MedStar Southern Maryland Hospital Center	10	3	2	10	7	2	10	8	2
	University of MD Capital Region Medical Center	8	4	2	8	4	2	8	4	2
St. Mary's	MedStar St. Mary's Hospital	6	2	1	6	2	1	6	3	1
SOUTHERN MARYLAND TOTAL		50	20	7	50	24	7	50	25	7

Table 17: Trends in Number of Surgical Rooms: Maryland Hospitals, 2022 – 2024

Jurisdiction / Region	Hospital	June 1, 2022			June 1, 2023			June 1, 2024		
		Total Operating Rooms	Total Procedure Rooms	Total Cesarean Section ORs	Total Operating Rooms	Total Procedure Rooms	Total Cesarean Section ORs	Total Operating Rooms	Total Procedure Rooms	Total Cesarean Section ORs
Anne Arundel	Luminis Anne Arundel Medical Center	26	4	3	26	4	3	26	4	3
	University of MD Baltimore Washington Medical Center	16	7	2	16	6	2	16	6	2
Baltimore City	Johns Hopkins Bayview Medical Center	14	6	2	14	8	2	14	8	2
	MedStar Good Samaritan Hospital	11	3	0	8	5	0	8	3	0
	MedStar Harbor Hospital	9	4	1	10	4	1	10	4	1
	MedStar Union Memorial Hospital	21	4	0	19	4	0	19	3	0
	Mercy Medical Center	26	26	2	26	25	2	26	26	2
	Sinai Hospital of Baltimore	21	6	2	21	6	2	21	6	2
	Ascension Saint Agnes Hospital	19	1	2	19	1	2	19	1	2
	Johns Hopkins Hospital	61	22	3	61	22	3	61	22	3
	University of MD Medical Center	35	18	3	35	12	3	35	14	3
	University of MD Medical Center Midtown Campus	10	8	0	10	8	0	8	4	0
	University of MD Rehabilitation and Orthopedic Institute	6	1	0	6	1	0	6	1	0
Baltimore County	Greater Baltimore Medical Center	23	10	3	25	7	3	25	12	3
	MedStar Franklin Square Medical Center	14	5	3	14	5	3	14	7	3
	Northwest Hospital Center	10	2	0	10	2	0	10	3	0
	University of Maryland St. Joseph Medical Center	15	5	2	15	5	2	15	5	2
Carroll	Carroll Hospital Center	10	3	2	10	3	2	10	3	2
Harford	University of MD Harford Memorial Hospital¹	4	1	0	4	1	0	-	-	-
	University of MD Upper Chesapeake Medical Center	11	1	2	11	1	2	11	1	2
Howard	Howard County General Hospital	10	3	2	10	3	2	10	3	2
CENTRAL MARYLAND TOTAL		372	140	34	370	133	34	364	136	34

Table 17: Trends in Number of Surgical Rooms: Maryland Hospitals, 2022 – 2024

Jurisdiction / Region	Hospital	June 1, 2022			June 1, 2023			June 1, 2024		
		Total Operating Rooms	Total Procedure Rooms	Total Cesarean Section ORs	Total Operating Rooms	Total Procedure Rooms	Total Cesarean Section ORs	Total Operating Rooms	Total Procedure Rooms	Total Cesarean Section ORs
Cecil	ChristianaCare Union Hospital	4	7	1	4	7	1	4	5	1
Kent	University of MD Shore Medical Center at Chestertown	3	1	0	2	1	0	2	1	0
Talbot	University of MD Shore Medical Center at Easton	6	1	1	6	1	1	6	1	1
Wicomico	TidalHealth Peninsula Regional	13	4	2	13	4	2	13	4	2
Worcester	Atlantic General Hospital	4	4	0	4	4	0	4	4	0
EASTERN SHORE TOTAL		30	17	4	29	17	4	29	15	4
STATE OF MARYLAND TOTAL		556	208	64	552	206	64	547	210	64

¹ On February 6, 2024 Harford Memorial Hospital closed.

Sources: MHCC Supplemental Surveys: Surgical Services, FY 2023, FY 2024, and FY 2025

Obstetric and Perinatal Services Capacity

Table 18: Obstetric Service Capacity: Maryland Hospitals, June 1, 2024

Jurisdiction / Region	Hospital	Labor Beds	Delivery Beds	Recovery Beds	Ante Partum	Post Partum Beds	Labor-Delivery Beds	Labor-Delivery-Recovery (LDR) Beds	Delivery-Recovery-Postpartum (LDRP) Beds	Cesarean Section ORs
Allegany	UPMC Western Maryland			2	4	12		4		2
Frederick	Frederick Health Hospital			2		27		9		2
Garrett	Garrett Regional Medical Center				2	2		1	3	
Washington	Meritus Medical Center				6	6			20	2
WESTERN MARYLAND TOTAL		0	0	4	12	47	0	14	23	6
Montgomery	Adventist HealthCare Shady Grove Medical Center				4	48		20		3
	Adventist HealthCare White Oak Medical Center			3	5	26		9		2
	Holy Cross Germantown Hospital			2	4	12		5		2
	Holy Cross Hospital of Silver Spring			9	16	78		24		4
	MedStar Montgomery Medical Center			2		11		5		2
MONTGOMERY COUNTY TOTAL		0	0	16	29	175	0	63	0	13
Calvert	CalvertHealth Medical Center				1	12		5		1
Charles	University of MD				2	12		4		1
	Charles Regional Medical Center									
Prince George's	MedStar Southern Maryland Hospital Center					18		10		2
	University of MD					27		9	2	2
	Capital Region Medical Center									
St. Mary's	MedStar St. Mary's Hospital				3	11	5			1
SOUTHERN MARYLAND TOTAL		0	0	0	6	80	5	28	2	7
Anne Arundel	Luminis Anne Arundel Medical Center			5	4	36		24		3
	University of Maryland			4		22		7		2
	Baltimore Washington Medical Center									
Baltimore City	Johns Hopkins Bayview Medical Center					22		6		2
	MedStar Harbor Hospital					8			16	1

Table 18: Obstetric Service Capacity: Maryland Hospitals, June 1, 2024

Jurisdiction / Region	Hospital	Labor Beds	Delivery Beds	Recovery Beds	Ante Partum	Post Partum Beds	Labor-Delivery Beds	Labor-Delivery-Recovery (LDR) Beds	Delivery-Recovery-Postpartum (LDRP) Beds	Cesarean Section ORs
Baltimore City (cont.)	Mercy Medical Center			3	3	29		13		2
	Sinai Hospital of Baltimore			3	4	23		8		2
	Ascension Saint Agnes Hospital							12		2
	Johns Hopkins Hospital			3		35		10		3
	University of MD Medical Center			5	8	14		12		3
Baltimore County	Greater Baltimore Medical Center				12	48		17		3
	MedStar Franklin Square Medical Center			3		23		14		3
	University of MD St. Joseph Medical Center					25		9		2
Carroll	Carroll Hospital Center			1					19	2
Harford	University of MD Upper Chesapeake Medical Center			2	4				14	2
Howard	Howard County General Hospital			3	3	34		14		2
CENTRAL MARYLAND TOTAL		0	0	32	38	319	0	146	49	34
Cecil	ChristianaCare Union Hospital					3			8	1
Talbot	University of Maryland Shore Medical Center at Easton			1	3				10	1
Wicomico	TidalHealth Peninsula Regional Medical Center					20		13		2
EASTERN SHORE TOTAL		0	0	1	3	23	0	13	18	4
STATE OF MARYLAND TOTAL		0	0	53	88	644	5	264	92	64

Source: MHCC Supplemental Survey: Obstetric Service Capacity, FY 2025

Table 19: Newborn Nursery Bassinets: Maryland Hospitals, FY 2025

Jurisdiction / Region	Hospital	Newborn Nursery	Premature Nursery	Neonatal Intensive Care	Total Bassinets
Allegany	UPMC Western Maryland	20			20
Frederick	Frederick Health Hospital	30		15	45
Garrett	Garrett Regional Medical Center	12			12
Washington	Meritus Medical Center	41			41
WESTERN MARYLAND TOTAL		103	0	15	118
Montgomery	Adventist HealthCare Shady Grove Medical Center	48		31	79
	Adventist HealthCare White Oak Medical Center	35			35
	Holy Cross Germantown Hospital	17	8		25
	Holy Cross Hospital of Silver Spring	120		46	166
	MedStar Montgomery Medical Center	14			14
MONTGOMERY COUNTY TOTAL		234	8	77	319
Calvert	CalvertHealth Medical Center	12			12
Charles	University of MD Charles Regional Medical Center	15			15
Prince George's	MedStar Southern Maryland Hospital Center	16	8		24
	University of MD Capital Region Medical Center	27	6	9	42
St. Mary's	MedStar St. Mary's Hospital	16			16
SOUTHERN MARYLAND TOTAL		86	14	9	109
Anne Arundel	Luminis Anne Arundel Medical Center	40		30	70
	University of MD Baltimore Washington Medical Center	18			18
Baltimore City	Johns Hopkins Bayview Medical Center	20		25	45
	MedStar Harbor Hospital	34			34
	Mercy Medical Center	40		26	66
	Sinai Hospital of Baltimore	30		21	51
	Ascension Saint Agnes Hospital	36		24	60
	Johns Hopkins Hospital	25		49	74
	University of MD Medical Center	24		52	76

Table 19: Newborn Nursery Bassinets: Maryland Hospitals, FY 2025

Jurisdiction / Region	Hospital	Newborn Nursery	Premature Nursery	Neonatal Intensive Care	Total Bassinets
Baltimore County	Greater Baltimore Medical Center	60		30	90
	MedStar Franklin Square Medical Center	35		23	58
	University of MD St. Joseph Medical Center	20		18	38
Carroll	Carroll Hospital Center	25			25
Harford	University of MD Upper Chesapeake Medical Center	25			25
Howard	Howard County General Hospital	30		18	48
CENTRAL MARYLAND TOTAL		462	0	316	778
Cecil	ChristianaCare Union Hospital	12			12
Talbot	University of MD Shore Medical Center at Easton	18			18
Wicomico	TidalHealth Peninsula Regional Medical Center	18	10		28
EASTERN SHORE TOTAL		48	10	0	58
STATE OF MARYLAND TOTAL		1,398	48	680	2,126

Source: MHCC ACHI, FY 2025

Table 20: Inpatient Medical Rehabilitation Services by Region and Jurisdiction, June 1, 2024

Jurisdiction / Region	Hospital	CARF Accredited Inpatient Medical Rehabilitation Programs Offered								Licensed Beds	Staffed Beds
		Comprehensive		Brain Injury		Spinal Cord		Stroke	Amputee Specialty		
		Adult	Pediatric	Adult	Pediatric	Adult	Pediatric				
Allegany	UPMC Western Maryland	✓								13	13
Washington	Meritus Health System	✓								20	20
WESTERN MARYLAND TOTAL		2	0	0	0	0	0	0	0	33	33
Montgomery	Adventist HealthCare Rehabilitation at White Oak	✓								42	42
	Adventist Rehabilitation Hospital of Maryland Rockville	✓								55	55
Prince George's	Encompass Health Rehabilitation Hospital of Bowie	✓								70	60
MONTGOMERY COUNTY TOTAL		3	0	0	0	0	0	0	0	167	157

Table 20: Inpatient Medical Rehabilitation Services by Region and Jurisdiction, June 1, 2024

Jurisdiction / Region	Hospital	CARF Accredited Inpatient Medical Rehabilitation Programs Offered								Licensed Beds	Staffed Beds
		Comprehensive		Brain Injury		Spinal Cord		Stroke	Amputee Specialty		
		Adult	Pediatric	Adult	Pediatric	Adult	Pediatric				
Baltimore City	Johns Hopkins Bayview Medical Center	✓								38	33
	Johns Hopkins Hospital	✓								18	18
	Kennedy Krieger Institute		✓		✓					31	31
	Levindale Hebrew Geriatric Center and Hospital	✓						✓		80	80
	Medstar Good Samaritan Hospital	✓								48	34
	Mount Washington Pediatric Hospital		✓							32	12
	Sinai Hospital Baltimore	✓		✓				✓		43	43
	University of MD Rehabilitation & Orthopedic Institute	✓		✓		✓		✓		130	90
CENTRAL MARYLAND TOTAL		6	2	2	1	1	0	3	0	420	341
Talbot	University of MD Shore Medical Center at Easton	✓								15	10
Wicomico	Encompass Health Rehabilitation Hospital of Salisbury	✓								74	71
EASTERN SHORE TOTAL		2	0	0	0	0	0	0	0	89	81
STATE OF MARYLAND		13	2	2	1	1	0	3	0	709	612

Source: MHCC Supplemental Surveys: Special Hospitals – Non-Psychiatric Services, FY 2025 and Acute Care General and Special Hospitals Supplemental Survey Special Non-Psychiatric Services FY 2025

Table 21: Licensed Special Hospitals and Special Hospital (Non-Psychiatric and Non-Rehabilitation) Beds, Maryland, June 1, 2024

Jurisdiction/ Region	Specialty Hospitals	Pediatric		Chronic	
		Licensed	Staffed	Licensed	Staffed
Washington	Western Maryland Center			60	7
Prince George's	Mt. Washington Pediatric Hospital at University of MD Capital Region Medical Center	15	8		
Baltimore City	Kennedy Krieger Institute	39	39		
	Levindale Hebrew Geriatric Center and Hospital			40	40
	Mount Washington Pediatric Hospital	50	32		
Wicomico	Deer's Head Center			66	11
MARYLAND TOTAL		104	79	166	58

Sources: MHCC Supplemental Survey: Special Hospitals – Non-Psychiatric Services, FY 2025

Table 22: Licensed Special Hospital (Non-Psychiatric and Non-Rehabilitation) Beds: Acute Care Hospitals, Maryland, June 1, 2024

Jurisdiction/ Region	Acute Care Hospitals	Chronic		Dual Rehabilitation / Chronic
		Licensed	Staffed	Licensed
Baltimore City/Central Maryland	Johns Hopkins Bayview Medical Center			
Baltimore City/Central Maryland	University of MD Rehabilitation & Orthopedic Institute	12	12	0
Baltimore City/Central Maryland	University of MD Medical Center Midtown Campus	22	22	0
MARYLAND STATE TOTAL				

Sources: MHCC Supplemental Survey: Acute Care General and Special Hospitals Supplemental Survey Special Non-Psychiatric Services FY 2025

Comprehensive Care Facility (Nursing Home) Beds in the Hospital Setting

Table 23: Licensed Comprehensive Care Facility Beds at Acute Care Hospitals: Maryland, June 1, 2024

County	Hospital	Licensed Comprehensive Care Facility Beds	Staffed Beds
Baltimore City	Mercy Medical Center	32	32
Garrett County	Garrett Regional Medical Center	10	10
MARYLAND TOTAL - ACUTE CARE HOSPITALS		42	42

Sources: MHCC Supplemental Survey: Acute Care General and Special Hospitals Supplemental Survey Special Non-Psychiatric Services FY 2025

Psychiatric Hospital Facilities and Services

Table 24: Inpatient Acute Psychiatric Services Available at General Acute Care Hospitals: Maryland, FY 2024

Jurisdiction / Region	Hospital	Licensed Psych Beds	Physical Bed Capacity	Staffed Psych Beds	Acute Adult	Acute Child	Acute Adolescent	Acute Geriatric	Accept Involuntary Patients
Allegany	UPMC Western Maryland	17	19	17	17				✓
Frederick	Frederick Health Hospital	21	21	21	21				✓
Washington	Meritus Medical Center	18	18	18	18				✓
WESTERN MARYLAND TOTAL		56	58	56	56	0	0	0	3
Montgomery	Adventist HealthCare Shady Grove Medical Center	133	133	90	72		18		✓
	Holy Cross Germantown Hospital	6	6	6	6				
	MedStar Montgomery Medical Center	14	14	14	9		5		
	Suburban Hospital	24	24	18	18				
MONTGOMERY COUNTY TOTAL		177	177	128	105	0	23	0	1
Calvert	CalvertHealth Medical Center	22	22	13	13				✓
Prince George's	Luminis Doctors Community Hospital	16	16	16	16				✓
	MedStar Southern Maryland Hospital Center	24	24	24	24				✓
	University of MD Capital Region Medical Center	28	27	27	27				✓
St. Mary's	MedStar St. Mary's Hospital	12	12	5	5				✓
SOUTHERN MARYLAND TOTAL		102	101	85	85	0	0	0	5
Anne Arundel	University of MD Baltimore Washington Medical Center	24	24	14	14				✓
Baltimore City	Johns Hopkins Bayview Medical Center	20	20	20	20				
	MedStar Harbor Hospital	36	36	29	29				✓
	Sinai Hospital of Baltimore	48	48	48	48				✓
	Johns Hopkins Hospital	108	108	98	83	15			✓
	University of MD Medical Center	42	44	29	10		8	11	✓
	University of MD Medical Center Midtown Campus	37	37	37	37				✓

Table 24: Inpatient Acute Psychiatric Services Available at General Acute Care Hospitals: Maryland, FY 2024

Jurisdiction / Region	Hospital	Licensed Psych Beds	Physical Bed Capacity	Staffed Psych Beds	Acute Adult	Acute Child	Acute Adolescent	Acute Geriatric	Accept Involuntary Patients
Baltimore County	MedStar Franklin Square Medical Center	40	40	40	29		11		✓
	Northwest Hospital Center	49	49	35	35				✓
	University of MD St. Joseph Medical Center	18	19	19	19				
Carroll	Carroll Hospital Center	20	20	12	9		3		✓
Howard	Howard County General Hospital	20	20	20	20				✓
CENTRAL MARYLAND TOTAL		462	465	401	353	15	22	11	10
Cecil	ChristianaCare Union Hospital	12	12	12	12				✓
Talbot	University of MD Shore Medical Center at Easton	11	12	12	12				✓
Wicomico	TidalHealth Peninsula Regional Medical Center	28	28	28	13	5	10		✓
EASTERN SHORE TOTAL		51	52	52	37	5	10	0	3
STATE OF MARYLAND TOTAL		848	853	722	636	20	55	11	22

Sources: MHCC Supplemental Survey: Special Hospitals - Psychiatric, FY 2025

Table 25: Inpatient Services Available at Private Special Hospitals - Psychiatric: Maryland, June 1, 2024

County	Hospital	Licensed Psych Beds	Physical Bed Capacity	Staffed Psych Beds	Acute Adult	Acute Child	Acute Adolescent	Acute Geriatric	Accepts Involuntary Patients
Anne Arundel	Luminis Health J. Kent McNew Family Medical Center	16	16	16	16				✓
Baltimore County	Sheppard and Enoch Pratt Hospital	323	332	256	134	20	88	14	✓
Harford	University of MD Upper Chesapeake Behavioral Health	33	33	33	33				✓
Howard	Sheppard Pratt Baltimore Washington Campus	85	85	85	51		34		✓
Washington	Brook Lane Health Services	65	65	58	20	14	24		✓
STATE OF MARYLAND TOTAL		522	531	448	254	34	146	14	5

Source: MHCC Supplemental Survey: Special Hospitals - Psychiatric, FY 2025

Table 26: Inpatient Services Available at State Special Hospitals - Psychiatric: Maryland, June 1, 2024

County	Hospital	Licensed Psych Beds	Physical Bed Capacity	Staffed Psych Beds	Acute Adult	Acute Adolescent	Acute Geriatric	Acute Forensic	Accepts Involuntary Patients
Allegany	Thomas B. Finan Center	66	66	66				44	✓
Baltimore County	Spring Grove Hospital Center	407	407	407	118	10	31		✓
Carroll	Springfield Hospital Center	220	229	220	220				✓
Dorchester	Eastern Shore Hospital Center	84	84	84				44	✓
Howard	Clifton T. Perkins Hospital Center	298	286	286	59		5	6	
STATE OF MARYLAND TOTAL		1,075	1,072	1,063	397	10	36	94	4

Source: MHCC Supplemental Survey: Special Hospitals - Psychiatric, FY 2025

Table 27: Partial Hospitalization and/or Intensive Outpatient Psychiatric Services at Acute Care Hospitals and Freestanding Medical Facilities: Maryland, June 1, 2024

Jurisdiction / Region	Acute Care General Hospital	Partial Hospitalization/ Intensive Outpatient Programs	Maximum Number of Slots Available	Average Patient Census: Partial Hospitalization / Intensive Outpatient Programs
Allegany	UPMC Western Maryland	✓	14	4
Frederick	Frederick Health Hospital	✓	15	7
WESTERN MARYLAND		2	29	11
Montgomery	Adventist HealthCare Shady Grove Medical Center	✓	22	17
Montgomery	Medstar Montgomery Medical Center	✓	24	10
Montgomery	Suburban Hospital	✓	20	10
MONTGOMERY COUNTY		3	66	37
Calvert	CalvertHealth Medical Center	✓	17	9
Prince George's	MedStar Southern Maryland Hospital Center	✓	10	6
St. Mary's	Medstar St. Mary's Hospital	✓	10	4
SOUTHERN MARYLAND		3	37	19
Anne Arundel	University of MD Baltimore Washington Medical Center	✓	9	4
Baltimore City	Johns Hopkins Hospital	✓	27	9
Baltimore City	Johns Hopkins Bayview Medical Center	✓	100	16
Baltimore City	Medstar Harbor Hospital	✓	25	9
Baltimore City	University of MD Medical Center Midtown Campus	✓	12	5
Baltimore County	University of MD St. Joseph Medical Center	✓	13	6
Carroll	Carroll Hospital Center	✓	12	7
CENTRAL MARYLAND		7	198	56
Dorchester	University of MD Shore Medical Center at Dorchester	✓	16	15
Talbot	University of MD Shore Medical Center at Easton	✓	55	50
Wicomico	TidalHealth Peninsula Regional Medical Center	✓	28	12
EASTERN SHORE		2	83	77
STATE OF MARYLAND TOTAL		18	429	200

Source: MHCC Supplemental Survey: Special Hospitals - Psychiatric, FY 2025

Table 28: Partial Hospitalization and/or Intensive Outpatient Services at Private Special Hospitals - Psychiatric: Maryland, June 1, 2024

County	Special Hospital – Psychiatric	Partial Hospitalization / Intensive Outpatient Programs	Maximum Slots Available: Partial Hospitalization / Intensive Outpatient Programs	Average Daily Census
Anne Arundel	Luminis Health J. Kent McNew Family Medical Center	✓	16	8
Baltimore City	Sheppard and Enoch Pratt	✓	99	62
Harford	University of MD Upper Chesapeake Behavioral Health	✓	10	5
Howard	Sheppard Pratt Baltimore Washington Campus	✓	44	28
Washington	Brook Lane Health Services	✓	24	16
STATE OF MARYLAND TOTAL		5	193	119

Source: MHCC Supplemental Survey: Special Hospitals - Psychiatric, FY 2025

Table 29: Inventory and Utilization of Psychiatric Beds at General Acute Care Hospitals Maryland, CY 2024

Jurisdiction / Region	Hospital	Licensed Psych Beds	Physical Bed Capacity	Staffed Psych Beds	Patient Days CY 2024	Staffed Bed Occupancy CY 2024
Allegany	UPMC Western Maryland	17	19	17	3,080	49.6%
Frederick	Frederick Health Hospital	21	21	21	5,725	74.7%
Washington	Meritus Medical Center	18	18	18	3,611	55.0%
WESTERN MARYLAND TOTAL		56	58	56	12,416	60.7%
Montgomery	Adventist HealthCare Shady Grove Medical Center	133	133	90	25,739	78.4%
	Holy Cross Germantown Hospital	6	6	6	1,603	73.2%
	MedStar Montgomery Medical Center	14	14	14	2,880	56.4%
	Suburban Hospital	24	24	18	5,845	89.0%
MONTGOMERY COUNTY TOTAL		177	177	128	36,067	77.2%
Calvert	CalvertHealth Medical Center	22	22	13	3,576	75.4%
Prince George's	Luminis Doctors Community Hospital	16	16	16	4,432	75.9%
	MedStar Southern Maryland Hospital Center	24	24	24	5,547	63.3%
	University of MD Capital Region Medical Center	28	27	27	8,415	85.4%
St. Mary's	MedStar St. Mary's Hospital	12	12	5	1,889	103.5%
SOUTHERN MARYLAND TOTAL		102	101	85	23,859	76.9%
Anne Arundel	University of MD Baltimore Washington Medical Center	24	24	14	4,820	94.3%
Baltimore City	Johns Hopkins Bayview Medical Center	20	20	20	5,396	73.9%
	MedStar Harbor Hospital	36	36	29	8,300	78.4%

Table 29: Inventory and Utilization of Psychiatric Beds at General Acute Care Hospitals Maryland, CY 2024

Jurisdiction / Region	Hospital	Licensed Psych Beds	Physical Bed Capacity	Staffed Psych Beds	Patient Days CY 2024	Staffed Bed Occupancy CY 2024
	Sinai Hospital of Baltimore	48	48	48	11,978	68.4%
	Johns Hopkins Hospital	108	108	98	28,604	80.0%
	University of MD Medical Center	42	44	29	9,076	85.7%
	University of MD Medical Center Midtown Campus	37	37	37	9,687	71.7%
Baltimore County	MedStar Franklin Square Medical Center	40	40	40	10,580	72.5%
	Northwest Hospital Center	49	49	35	10,826	84.7%
	University of MD St. Joseph Medical Center	18	19	19	4,901	70.7%
Carroll	Carroll Hospital Center	20	20	12	3,222	73.6%
Howard	Howard County General Hospital	20	20	20	6,234	85.4%
CENTRAL MARYLAND TOTAL		462	465	401	113,624	77.6%
Cecil	ChristianaCare Union Hospital	12	12	12	2,431	55.5%
Talbot	University of MD Shore Medical Center at Easton	11	12	12	2,826	64.5%
Wicomico	TidalHealth Peninsula Regional Medical Center	28	28	28	3,398	33.2%
EASTERN SHORE TOTAL		51	52	52	8,655	45.6%
STATE OF MARYLAND TOTAL		848	853	722	194,621	73.9%

Sources: Licensed Beds, MDH Office of Health Care Quality; Physical Capacity and Staffed Beds, MHCC Supplemental Survey: Special Hospitals - Psychiatric, FY 2025; Patient Days, MHCC staff analysis of HSCRC discharge data.

Table 30: Inventory and Utilization of Psychiatric Beds at Private Psychiatric Hospitals: Maryland, June 1, 2024

Jurisdiction / Region	Private Special Hospital - Psychiatric	Licensed Psych Beds	Physical Bed Capacity	Staffed Psych Beds	Patient Days CY 2024	Staffed Bed Occupancy CY 2024
Anne Arundel	Luminis Health J. Kent McNew Family Medical Center	16	16	16	4749	81.3%
Baltimore County	Sheppard and Enoch Pratt Hospital	323	332	256	80,881	86.6%
Harford	University of MD Upper Chesapeake Behavioral Health	33	33	33	7059	58.6%
Howard	Sheppard Pratt Baltimore Washington Campus	85	85	85	22,346	72.0%
Washington	Brook Lane Health Services	65	65	58	16,657	78.7%
STATE OF MARYLAND TOTAL		522	531	448	131,692	80.5%

Sources: Licensed Beds, MDH Office of Health Care Quality; Physical Capacity and Staffed Beds, MHCC Supplemental Survey: Special Hospitals - Psychiatric, FY 2025; Patient Days, MHCC staff analysis of HSCRC discharge data.

Table 31: Inventory and Utilization of Psychiatric Beds at State Psychiatric Hospitals: Maryland, June 1, 2024

Jurisdiction / Region	State Special Hospital - Psychiatric	Licensed Beds	Physical Bed Capacity		Staffed Beds		Patient Days CY 2024	Staffed Bed Occupancy CY 2024
			Acute Care	Continuing Care	Acute Care	Continuing Care		
Allegany	Thomas B. Finan Center	66	44	22	44	22	23,647	98%
Baltimore County	Spring Grove Hospital Center	639	159	248	159	248	144,750	97%
Carroll	Springfield Hospital Center	522	229	0	220	0	78,600	98%
Dorchester	Eastern Shore Hospital Center	84	44	40	44	40	30,227	98%
Howard	Clifton T. Perkins Hospital Center	298	70	216	70	216	102,639	98%
STATE OF MARYLAND TOTAL		1,609	546	526	537	526	379,863	98%

Sources: Licensed Beds, MDH Office of Health Care Quality; Physical Capacity and Staffed Beds, MHCC Supplemental Survey: Special Hospitals - Psychiatric, FY 2025; Patient Days, MHCC staff analysis of HSCRC discharge data.