

Annual Report on Selected Maryland Acute Care and Special Hospital Services

Fiscal Year **2015**

Effective July 1, 2014



Annual Report on Selected Maryland Acute Care and Special Hospital Services

Fiscal Year **2015**



Center for Health Care Facilities
Planning & Development

Table of Contents

	Page
Background.....	1
Acute Care Hospital Bed Capacity	1
Licensed Acute Care Hospital Beds in Maryland: FY 2015	2
Demand for Hospital Beds in Maryland Compared with Regional and National Trends.....	8
Critical Care Beds.....	12
Monitored Beds.....	14
Hospital System Affiliation.....	16
Total Available Acute Care Bed Capacity.....	19
Observation Services	21
Emergency Department/Freestanding Medical Facility Treatment Capacity.....	23
Hospital Surgical Services Capacity.....	27
Obstetric and Perinatal Services Capacity	31
Special Hospital Services, Comprehensive Care Facilities in the Hospital Setting, and Hospital-Based Psychiatric Care	33
Special Hospital Medical Rehabilitation Services	33
Other Special Hospital Services (non-psychiatric).....	34
Comprehensive Care Beds in the Hospital Setting.....	36
Psychiatric Hospital Facilities and Services.....	37

Tables and Charts

Tables:

1	Licensed Acute Care Beds by Hospital and Service: Maryland, FY 2015	3
2	Trend in Licensed Acute Care Beds by Hospital: Maryland, FY 2006 - 2015	4

3	Percent Change in Total Licensed Acute Care Hospital Beds, by Maryland Region: FY 2006 – 2015.....	5
4	Change in Number of Total Licensed Acute Care Beds by Region: Maryland Hospitals, FY 2014 - 2015.....	7
5	Allocation of Licensed Acute Care Beds by Service: Maryland Hospitals, FY 2006 - 2015	8
6	Allocation of Licensed Acute Care Beds by Service (Percentage), Maryland Hospitals, FY 2006 – FY2015	8
7	Proportion of Total Population Aged 65 and Older, South Atlantic Census Region States, 2013.....	9
8	Critical Care Bed Inventory: Maryland Hospitals, FY 2015.....	13
9	Licensed Acute Care Beds with Monitoring Capability: Maryland Hospitals, FY 2015.....	15
10	Trend in Licensed Acute Care Beds by System Affiliation: Maryland Hospitals, FY 2006 – 2015.....	17
11	Multihospital Systems and Hospitals and Beds by System Status in Maryland, F Y 2008 – 2015.....	18
12	Total Available Physical Acute Care Bed Capacity Reported by Maryland Hospitals, June 1, 2014	20
13	Maryland Acute Care General Hospital Observation (OBV) Services, June 1, 2014.....	22
14	Summary – Acute Care Hospital Observation Beds, June 1, 2014	23
15	Change in Emergency Department/Freestanding Medical Facility Treatment Capacity: Maryland, 2013 – 2014.....	24
16	Inventory of Emergency Department/Freestanding Medical Facility Treatment Capacity: Maryland Hospitals: June 1, 2014	25
17	Trends in Emergency Department/Freestanding Medical Facility Treatment Capacity: Maryland Hospitals, June 1, 2008 – June 1, 2014.....	26
18	Surgical Services Capacity by Hospital and Room Use: Maryland Hospitals, June 1, 2014.....	28
19	Dedicated Cesarean Section Operating Rooms and Procedure Rooms by Hospital: Maryland Hospitals, June 1, 2014.....	29
20	Trends in Number of Surgical Rooms: Maryland Hospitals, 2012 – 2014.....	30

21	Obstetric Service Capacity: Maryland Hospitals, June 1, 2014.....	31
22	Newborn Nursery Bassinets, Maryland Hospitals, FY 2014.....	32
23	Inpatient Medical Rehabilitation Facilities and Services by Region and Jurisdiction, June 1, 2014.....	34
24	Licensed Special Hospital and their Special Hospital (Non-Psychiatric and Non- Rehabilitation) Beds, Maryland, June 1, 2014.....	35
25	Licensed Special Hospitals (Non-Psychiatric and Non-Rehabilitation) Beds, Located on Acute Care Hospital Campuses: Maryland, June 1, 2014.....	35
26	Licensed Comprehensive Care Beds at Acute Care Hospitals: Maryland, June 1, 2014.....	37
27	Licensed Comprehensive Care Beds at Special Hospitals: June 1, 2014.....	37
28	Inpatient Acute Psychiatric Services Available at General Acute Care Hospitals, Maryland, FY 2015.....	38
29	Inpatient Psychiatric Services Available at Private Special Hospitals – Psychiatric, Maryland, June 1, 2014.....	39
30	Inpatient Psychiatric Services Provided at State Special Hospitals – Psychiatric, Maryland, June 1, 2014.....	39
31	Partial Hospitalization and/or Intensive Outpatient Psychiatric Services at Acute Care Hospitals, June 1, 2014.....	41
32	Partial Hospitalization and/or Intensive Outpatient Services at Private Special Hospitals, Psychiatric: June 1, 2014.....	42
33	Inventory and Utilization of Psychiatric Beds at General Acute Care Hospitals, Maryland, 2014.....	43
34	Inventory and Utilization of Psychiatric Beds at Private Psychiatric Hospitals: Maryland, 2014.....	44
35	Inventory and Utilization of Psychiatric Beds at State Psychiatric Hospitals: Maryland, 2014.....	44

Charts:

1	Year to Year Change in Total Licensed Acute Care Beds: Maryland Hospitals, FY 2006 – FY 2015.....	5
2	Total Licensed Acute Care Beds: Maryland Hospitals, FY 2006 – 2015.....	6
3	Trend in Average Daily Acute Care Patient Census: Maryland Hospitals, CY 1980 – 2013.....	6

4 Hospital Admissions per 1,000 Population, All Hospital Unit Admissions (Excludes NH Unit Admissions) South Atlantic Census Region States 2006 – 20129

5 Hospital Average Length of Stay, All Hospital Unit Admissions (Excludes NH Unit Admissions) South Atlantic Census Region States 2006 – 2012 10

6 Hospital Admissions per 1,000 Population, All Hospital Unit Admissions (Excludes NH Unit Admissions) U.S. and Maryland, 1994 – 2012..... 11

7 Hospital Average Length of Stay, All Hospital Unit Admissions (Excludes NH Unit Admissions) U.S. and Maryland, 1994 – 2012 11

8 Comparison of Multihospital Systems and Non-Multihospital System Hospitals, Maryland, FY 2006 - FY2015..... 18

9 Change in Number of Emergency Treatment Spaces by Type of Space: Maryland, 2007 – 2014.....27

Annual Report on Selected Maryland Acute Care and Special Hospital Services: Fiscal Year 2015

Background

An Annual Report profiling changes in licensed acute care hospital beds in Maryland's acute care hospitals was initiated in 2001 to document and track changes in the licensed bed inventory following implementation of a standardized annual licensure renewal process based on inpatient census. The process involves notifying hospitals prior to the beginning of each fiscal year concerning the calculated total number of licensed acute care beds for the coming fiscal year. In turn, the hospitals identify the allocation of the total licensed acute care beds across four service categories: medical/surgical/gynecological/addictions ("MSGA"); obstetric, pediatric, and acute psychiatric services. Over time, additional information on hospital service capacity, covering emergency department services, surgical services, obstetric and perinatal services, and non-acute care bed capacity have been added to the survey undertaken to update acute care bed licensure.

Acute Care Hospital Bed Capacity

Licensed bed capacity for acute care hospitals in the State of Maryland is dynamic, calculated annually based on average daily acute care inpatient census. The Maryland Health Care Commission, in conjunction with the Health Services Cost Review Commission, calculates the average daily census (ADC) of acute care patients for each hospital for the 12-month period ending with the first quarter of each year and total licensed acute care bed capacity is established for the next fiscal year at 140% of the hospital's average daily census. This licensure approach reflects an assumption that an average annual occupancy rate of approximately 71.4% for acute care hospital beds is an appropriate bench-mark for determining the maximum number of beds an acute care hospital needs to operate.

The initial implementation of this licensure process in FY 2001 resulted in a total of 9,562 licensed acute care beds, removing 2,773 beds from the licensure rolls. Total licensed acute care bed capacity increased, in response to increases in average daily patient census each year after the initial reduction in 2001, peaking at 10,880 beds in FY 2011. The total number of licensed acute care hospital beds in Maryland has declined in every following year, declining to 9,804 beds in the current fiscal year. Thus, Maryland experienced a 13.8% increase in the average daily census of acute care patients between 2000 and 2010 and has experienced a 9.9% decline in acute care ADC between 2010 and 2014.

Licensed Acute Care Hospital Beds in Maryland: FY 2015

Table 1 shows the licensed acute care bed capacity for each acute care hospital, by service, effective July 1, 2015. The calculation of licensed beds for FY 2015, based on each hospital's ADC during the period April 1, 2013 through March 31, 2014, results in a total of 9,804 licensed acute care hospital beds in Maryland. Table 2 shows the ten-year trend in licensed acute care beds by hospital. Table 3 shows the percent change by region.

Table 1. Licensed Acute Care Beds by Hospital and Service: Maryland, FY 2015

Jurisdiction/ Region	Hospital	Acute Care Services				
		MSGA	Obstetric	Pediatric	Psychiatric	Total
Allegany County	Western Maryland Regional Medical Center	160	10	2	20	192
Frederick County	Frederick Memorial Hospital	200	27	10	21	258
Garrett County	Garrett County Memorial Hospital	20	2	1	0	23
Washington County	Meritus Medical Center	193	17	5	16	231
WESTERN MARYLAND TOTAL		573	56	18	57	704
Montgomery County	Holy Cross Hospital of Silver Spring	277	88	26	0	391
	MedStar Montgomery Medical Center	87	11	2	20	120
	Shady Grove Adventist Hospital	224	56	25	0	305
	Suburban Hospital	190	0	6	24	220
	Washington Adventist Hospital	171	21	0	40	232
MONTGOMERY COUNTY TOTAL		949	176	59	84	1,268
Calvert County	Calvert Memorial Hospital	66	7	1	11	85
Charles County	University of Maryland Charles Regional Medical Center	99	12	4	0	115
Prince George's County	Doctors Community Hospital	182	0	0	0	182
	Fort Washington Medical Center	31	0	0	0	31
	Laurel Regional Hospital	50	10	0	14	74
	MedStar Southern Maryland Hospital Center	148	30	4	25	207
	Prince George's Hospital Center	141	38	8	28	215
	<i>Total: Prince George's County</i>	<i>552</i>	<i>78</i>	<i>12</i>	<i>67</i>	<i>709</i>
St. Mary's County	MedStar St. Mary's Hospital	52	12	6	12	82
SOUTHERN MARYLAND TOTAL		769	109	23	90	991
Anne Arundel County	Anne Arundel Medical Center	316	60	8	0	384
	University of Maryland Baltimore Washington Medical Center	271	15	10	14	310
	<i>Total: Anne Arundel County</i>	<i>587</i>	<i>75</i>	<i>18</i>	<i>14</i>	<i>694</i>
Baltimore City	Bon Secours Hospital	56	0	0	32	88
	Johns Hopkins Bayview Medical Center	293	17	7	20	337
	MedStar Good Samaritan Hospital	177	0	0	0	177
	MedStar Harbor Hospital	90	25	5	0	120
	MedStar Union Memorial Hospital	177	0	2	26	205
	Mercy Medical Center	170	32	5	0	207
	Sinai Hospital of Baltimore	334	23	26	24	407
	St. Agnes Hospital	239	20	5	0	264
	The Johns Hopkins Hospital	799	35	140	108	1,082
	University of Maryland Medical Center	657	30	58	56	801
	University of Maryland Medical Center Midtown Campus	82	0	0	28	110
	University of Maryland Rehabilitation and Orthopaedics Institute	10	0	0	0	10
	<i>Total: Baltimore City</i>	<i>3,084</i>	<i>182</i>	<i>248</i>	<i>294</i>	<i>3,808</i>
Baltimore County	Greater Baltimore Medical Center	177	60	8	0	245
	MedStar Franklin Square Hospital	268	37	9	40	354
	Northwest Hospital Center	222	0	0	23	245
	University of Maryland St. Joseph Medical Center	195	20	4	19	238
	<i>Total: Baltimore County</i>	<i>862</i>	<i>117</i>	<i>21</i>	<i>82</i>	<i>1,082</i>
Carroll County	Carroll Hospital Center	100	20	7	20	147
Harford County	University of Maryland Harford Memorial Hospital	57	0	0	27	84
	University of Maryland Upper Chesapeake Medical Center	168	12	3	0	183
	<i>Total: Harford County</i>	<i>225</i>	<i>12</i>	<i>3</i>	<i>27</i>	<i>267</i>
Howard County	Howard County General Hospital	199	34	6	20	259
CENTRAL MARYLAND TOTAL		5,057	440	303	457	6,257
Cecil County	Union Hospital of Cecil County	60	5	2	8	75
Dorchester County	University of Maryland Shore Medical Center at Dorchester	23	0	0	16	39
Kent County	University of Maryland Shore Medical Center at Chestertown	30	0	1	0	31
Somerset County	Edward W. McCready Memorial Hospital	4	0	0	0	4
Talbot County	University of Maryland Shore Medical Center at Easton	87	17	8	0	112
Wicomico County	Peninsula Regional Medical Center	235	20	8	12	275
Worcester County	Atlantic General Hospital	48	0	0	0	48
EASTERN SHORE TOTAL		487	42	19	36	584
MARYLAND TOTAL		7,835	823	422	724	9,804

Source: Maryland Health Care Commission, Acute Care Hospital Inventory (ACHI) FY2015.

Table 2. Trend in Licensed Acute Care Beds by Hospital: Maryland, FY 2006 - 2015*

Jurisdiction/Region	Hospital	2006	2007	2008	2009	2010	2011	2012	2013	2014	2015
Allegany County	Braddock Hospital	144	148	155	154	-	-	-	-	-	-
	Memorial Hosp & Med Ctr. of Cumberland	124	120	109	117	-	-	-	-	-	-
	Western Maryland Regional Medical Center	-	-	-	-	262	252	250	234	200	192
	<i>Total: Allegany County</i>	268	268	264	271	262	252	250	234	200	192
Frederick County	Frederick Memorial Hospital	232	227	246	269	274	276	309	298	297	258
Garrett County	Garrett County Memorial Hospital	33	31	34	36	33	31	30	29	26	23
Washington County	Meritus Medical Center	246	243	264	258	260	258	252	245	237	231
WESTERN MARYLAND TOTAL		779	769	808	834	829	817	841	806	760	704
Montgomery County	Holy Cross Hospital of Silver Spring	365	379	404	408	404	402	409	396	397	391
	MedStar Montgomery General Hospital	144	144	149	165	170	159	158	138	132	120
	Shady Grove Adventist Hospital	269	268	275	293	320	336	339	331	312	305
	Suburban Hospital	228	212	228	238	239	222	233	229	236	220
	Washington Adventist Hospital	292	285	294	292	288	281	271	252	252	232
MONTGOMERY COUNTY TOTAL		1,298	1,288	1,350	1,396	1,421	1,400	1,410	1,346	1,329	1,268
Calvert County	Calvert Memorial Hospital	105	107	105	106	98	98	95	95	92	85
Charles County	Univ. of MD Charles Regional Medical Center	117	109	121	129	120	120	124	110	121	115
Prince George's County	Doctors Community Hospital	181	186	192	195	190	195	219	207	198	182
	Fort Washington Medical Center	41	42	42	43	43	42	41	31	33	31
	Laurel Regional Hospital	108	96	95	97	95	87	83	77	78	74
	MedStar Southern Maryland Hospital Center	246	257	258	255	246	235	238	239	227	207
	Prince George's Hospital Center	269	268	264	246	254	244	242	224	214	215
<i>Total: Prince George's County</i>	845	849	851	836	828	803	823	778	750	709	
St. Mary's County	MedStar St. Mary's Hospital	88	105	108	108	103	96	90	90	89	82
SOUTHERN MARYLAND TOTAL		1,155	1,170	1,185	1,179	1,149	1,117	1,132	1,073	1,052	991
Anne Arundel County	Anne Arundel Medical Center	265	265	278	301	316	324	336	380	385	384
	Univ. of MD Baltimore Washington Medical Center	278	286	293	298	311	321	308	307	319	310
	<i>Total: Anne Arundel County</i>	543	551	571	599	627	645	644	687	704	694
Baltimore City	Bon Secours Hospital	142	141	151	125	126	141	127	115	107	88
	Johns Hopkins Bayview Medical Center	316	323	333	345	346	348	348	355	355	337
	MedStar Good Samaritan Hospital	279	265	265	245	236	235	222	224	206	177
	MedStar Harbor Hospital	182	186	203	215	221	193	179	160	136	120
	MedStar Union Memorial Hospital	287	279	283	292	295	271	231	236	221	205
	Mercy Medical Center	228	224	235	243	244	244	226	233	225	207
	Sinai Hospital of Baltimore	392	393	398	415	413	424	416	426	421	407
	St. Agnes Hospital	308	323	314	307	318	314	296	287	276	264
	The Johns Hopkins Hospital	956	958	982	979	990	994	992	1,000	1,060	1,082
	University of Maryland Medical Center	665	669	689	705	731	757	779	800	816	801
	Univ. of MD Medical Center Midtown Campus	196	205	209	191	180	167	164	155	128	110
	Univ. of MD Rehabilitation & Orthopaedic Institute	10	11	10	11	10	10	9	9	10	10
	<i>Total: Baltimore City</i>	3,961	3,977	4,072	4,073	4,110	3,921	3,989	4,000	3,961	3,808
Baltimore County	Greater Baltimore Medical Center	287	292	298	310	300	285	281	270	255	245
	MedStar Franklin Square Hospital	343	357	362	380	371	376	347	355	347	354
	Northwest Hospital Center	209	214	213	218	221	215	221	225	243	245
	Univ. of MD St. Joseph Medical Center	342	370	364	354	345	300	263	247	232	238
	<i>Total: Baltimore County</i>	1,181	1,233	1,237	1,262	1,237	891	1,112	1,097	1,077	1,082
Carroll County	Carroll Hospital Center	199	210	216	218	213	195	189	158	151	147
Harford County	Univ. of MD Harford Memorial Hospital	91	94	91	104	105	101	97	89	89	84
	Univ. of MD Upper Chesapeake Medical Center	149	167	168	182	196	186	175	181	185	183
	<i>Total: Harford County</i>	240	261	259	286	301	287	272	270	274	267
Howard County	Howard County General Hospital	204	208	219	209	227	238	249	249	253	259
CENTRAL MARYLAND TOTAL		6,328	6,440	6,574	6,647	6,715	6,177	6,455	6,461	6,420	6,257
Cecil County	Union Hospital of Cecil County	111	99	105	116	113	113	106	92	85	75
Dorchester County	Univ. of MD Shore Medical Center at Dorchester	58	53	49	54	54	53	52	46	41	39
Kent County	Univ. of MD Shore Medical Center at Chestertown	57	58	62	57	53	47	46	42	41	31
Somerset County	Edward W. McCready Memorial Hospital	8	9	8	9	8	8	9	5	4	4
Talbot County	Univ. of MD Shore Medical Center at Easton	129	120	123	120	125	120	116	112	112	112
Wicomico County	Peninsula Regional Medical Center	360	371	366	362	358	362	363	317	288	275
Worcester County	Atlantic General Hospital	40	49	51	53	55	53	53	48	45	48
EASTERN SHORE TOTAL		763	759	764	771	766	756	745	662	616	584
MARYLAND TOTAL		10,323	10,426	10,681	10,827	10,880	10,729	10,583	10,348	10,177	9,804

Source: Maryland Health Care Commission.

*Prior to FY 2001, the number of licensed acute care hospital beds was based on physical bed capacity. Statewide, there were 12,328 licensed acute care beds in FY2000. In FY 2001, the first year that state law required licensure of acute care hospital beds based on actual patient census, the total number of licensed acute care hospital beds in Maryland declined to 9,562.

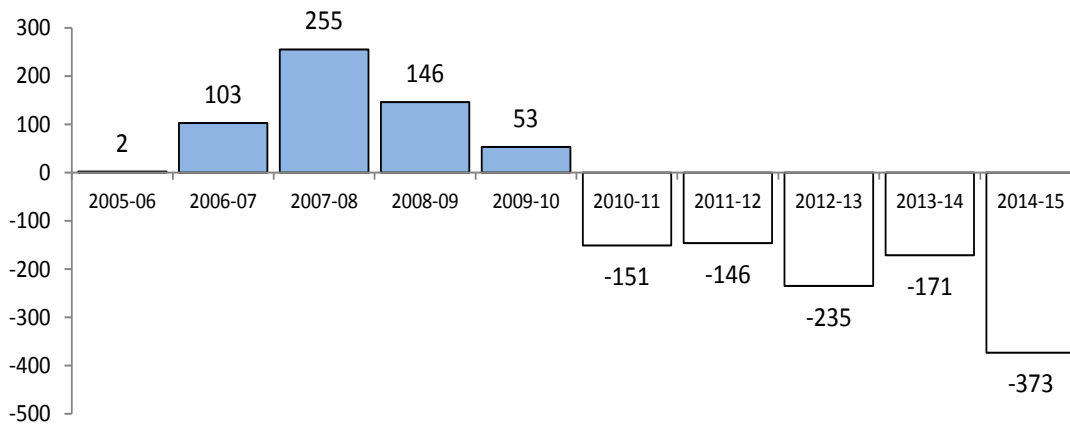
**Table 3. Percent Change in Total Licensed Acute Care Hospital Beds,
by Maryland Region: Fiscal Years 2006 - 2015**

Region	2006	2007	2008	2009	2010	2011	2012	2013	2014	2015	Average Annual Change 2006 - 2017
Western Maryland	-0.4%	-1.3%	5.1%	3.2%	-0.6%	-1.4%	2.9%	-4.2%	-5.7%	-7.4%	-1.0%
Montgomery County	-3.0%	-0.8%	4.8%	3.4%	1.8%	-1.5%	0.7%	-4.5%	-1.3%	-4.6%	-0.5%
Southern Maryland	-2.9%	1.3%	1.3%	-0.5%	-2.5%	-2.8%	1.3%	-5.2%	-2.0%	-5.8%	-1.8%
Central Maryland	1.1%	1.8%	2.1%	1.1%	1.0%	-1.1%	2.8%	0.1%	-0.6%	-2.5%	0.6%
Eastern Shore	1.3%	-0.5%	0.7%	0.9%	-0.6%	-1.3%	1.5%	-11.1%	-6.9%	-5.2%	-2.1%
Maryland Total	0.0%	1.0%	2.4%	1.4%	0.5%	-1.4%	-1.4%	-2.2%	-1.7%	-3.7%	-0.5%

Source: Maryland Health Care Commission

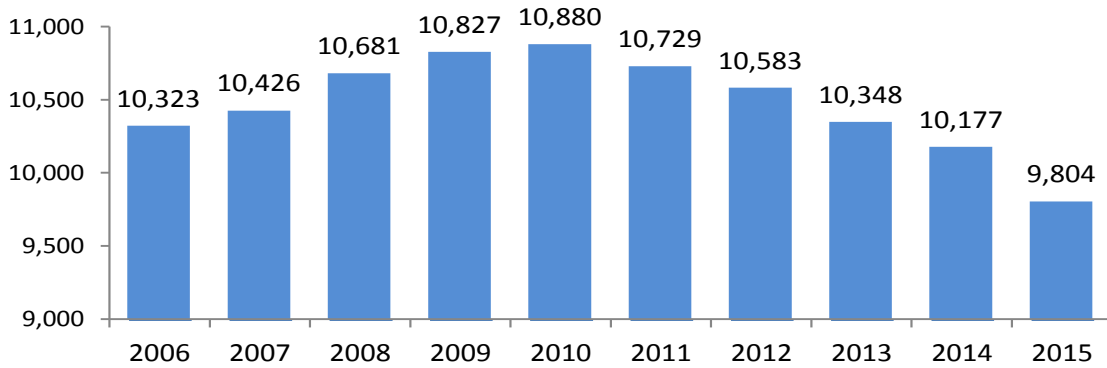
Chart 1 displays the annual net change in licensed acute care beds over the last ten years, while Chart 2 shows the total number of licensed beds over the same time period.

Chart 1. Year to Year Change in Total Licensed Acute Care Beds: Maryland Hospitals, FY 2005 - 2015



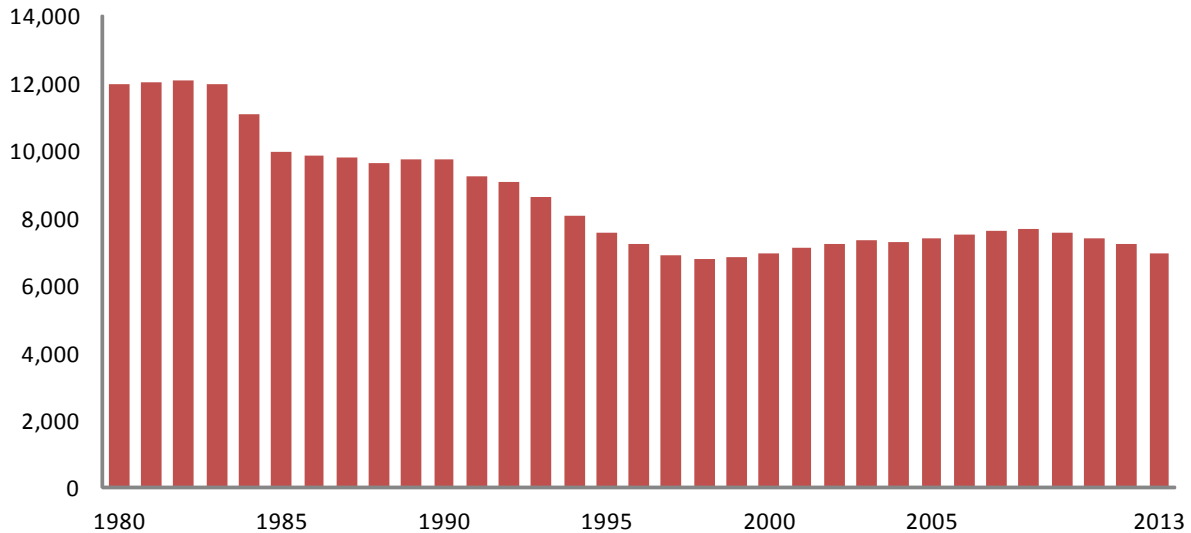
Source: Maryland Health Care Commission

**Chart 2. Total Licensed Acute Care Beds:
Maryland Hospitals, FY 2006 - 2015**



Source: Maryland Health Care Commission

**Chart 3. Trend in Average Daily Acute Care Patient Census:
Maryland Hospitals, CY 1980 - 2013**



Source: Maryland Health Care Commission. Note: Data reported is based on the Hospital Discharge Abstract Data Base for calendar years 1980 - 2013 and reflects the average daily census for all services excluding newborn and rehabilitation services.

While the average daily census of acute care patients began to gradually trend upward in the late 1990's, hospital utilization in Maryland never returned to historic peaks. During calendar year 2009 average daily census saw the first decline since dynamic hospital bed licensure went into effect in 2001. The decline in average daily census has continued through 2014. Chart 3 shows the trend of declining acute care census from the early 1980s through the late 1990s, the extent of the rebound in census that occurred in the next ten years and the recent return to gradual decline after 2008.

Table 4 profiles the FY 2014 - 2015 change in total licensed acute care hospital beds from a regional perspective. The State as a whole experienced an overall decrease of 3.7% in bed capacity. All Maryland health planning regions saw an overall decrease in bed capacity for FY 2015, Central Maryland had the lowest decrease in bed capacity, Western Maryland showed the largest overall decrease in bed capacity. Statewide, five (5) hospitals saw an increase in bed capacity, thirty-seven (37) hospitals saw a decrease in bed capacity and four hospitals had no change in bed capacity from the previous year.

**Table 4. Change in Number of Total Licensed Acute Care Beds by Region:
Maryland Hospitals, FY 2014 - FY 2015**

Region	Total Number of Hospitals	Net Change in Number of Total Licensed Beds	Percent Change	Number of Hospitals with an Increase in Beds	Number of Hospitals with a Decrease in Beds	Number of Hospitals with No Change in Hospital Beds
Western Maryland	4	(56)	-7.4%	0	4	0
Montgomery County	5	(61)	-4.6%	0	5	0
Southern Maryland	8	(61)	-5.8%	1	7	0
Central Maryland	22	(163)	-2.5%	3	17	2
Eastern Shore	7	(32)	-5.2%	1	4	2
MARYLAND TOTAL	46	(373)	-3.7%	5	37	4

Source: Maryland Health Care Commission

Tables 5 and 6 profile the change in the inventory of licensed acute care hospital beds for the past ten fiscal years for the four acute care bed service categories. As can be seen, there have been no dramatic changes in the allocation of acute care beds by Maryland's hospitals over this period, with MSGA beds accounting for an average of 80% of total acute care beds, obstetric beds comprising an average of 8%, acute psychiatric beds, on average, 7% of total, and pediatric beds, 4% of total.

**Table 5. Allocation of Licensed Acute Care Beds by Service
Maryland Hospitals, FY 2006 - 2015**

Service Category	2006	2007	2008	2009	2010	2011	2012	2013	2014	2015
MSGA	8,349	8,451	8,694	8,827	8,890	8,738	8,590	8,352	8,198	7,835
Obstetric	840	838	848	854	851	848	851	851	827	823
Pediatric	457	459	458	459	451	452	447	442	438	422
Acute Psychiatric	677	678	681	687	688	691	695	703	714	724
TOTAL	10,323	10,426	10,681	10,827	10,880	10,729	10,583	10,348	10,177	9,804

Source: Maryland Health Care Commission

**Table 6. Allocation of Licensed Acute Care Beds by Service (Percentage),
Maryland Hospitals, FY 2006 - FY 2015**

Service Category	2006	2007	2008	2009	2010	2011	2012	2013	2014	2015
MSGA	80.9%	81.1%	81.4%	81.5%	81.7%	81.4%	81.2%	80.7%	80.6%	79.9%
Obstetric	8.1%	8.0%	7.9%	7.9%	7.8%	7.9%	8.0%	8.2%	8.1%	8.4%
Pediatric	4.4%	4.4%	4.3%	4.2%	4.1%	4.2%	4.2%	4.3%	4.3%	4.3%
Acute Psychiatric	6.6%	6.5%	6.4%	6.3%	6.3%	6.4%	6.6%	6.8%	7.0%	7.4%
TOTAL	100.0%	100.0%	100.0%	100.0%	100.0%	100.0%	100.0%	100.0%	100.0%	100.0%

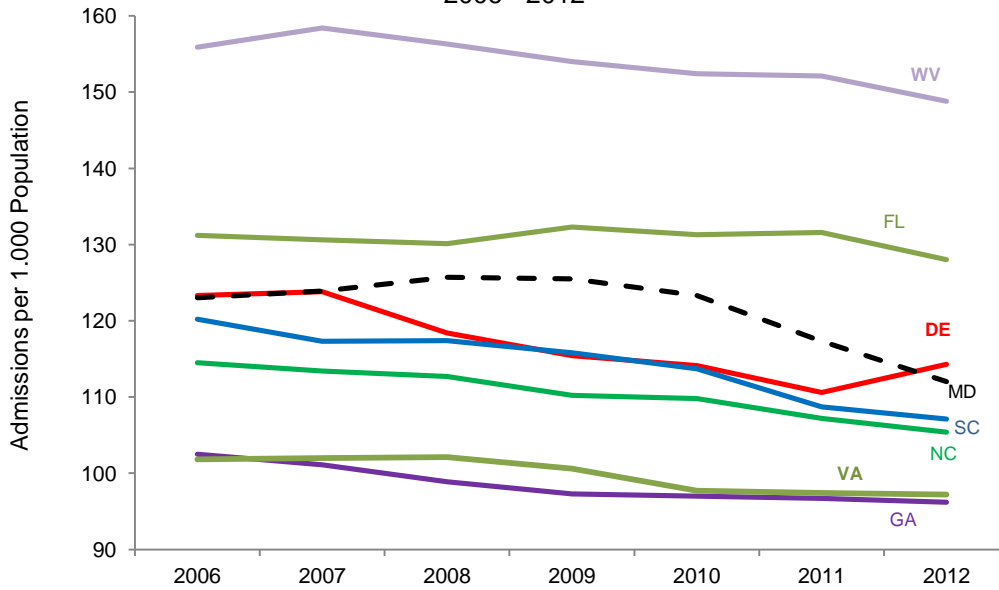
Source: Maryland Health Care Commission

Demand for Hospital Beds in Maryland Compared with Regional and National Trends

The following graphs profile information from *Hospital Statistics*, an annual publication of the American Hospital Association. They reflect this publication's reported acute care hospital use rates and average stay statistics for Maryland and contrasts the demand reported for other Southeastern States and the U.S. experience.

The first two graphs compare hospital admissions per thousand population and average length of hospital stay in Maryland with the experience of the seven other states in the South Atlantic Census Region. This data is not age-adjusted. The relative age of the population in these states is an important factor in its interpretation. To provide some context, the accompanying table compares the proportion of 65 and older persons in the total population of these states, as recorded in the estimated 2012 U.S. Census of population.

Chart 4: Hospital Admissions per 1,000 Population
 All Hospital Unit Admissions (Excludes NH Unit Admissions)
 South Atlantic Census Region States
 2006 - 2012



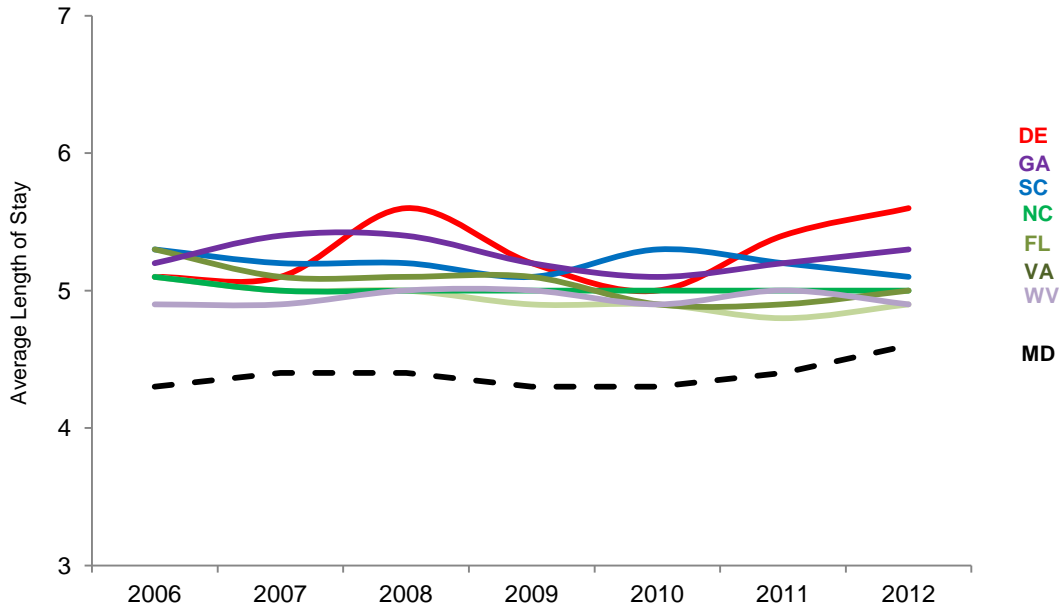
Source: AHA Hospital Statistics (2013) Edition)

Table 7.
Proportion of Total Population Aged 65 and Older
South Atlantic Census Region States, 2013

State	Percentage of Population Aged 65 and Older
Florida	18.7%
West Virginia	17.3%
Delaware	15.9%
South Carolina	15.2%
North Carolina	14.3%
Maryland	13.4%
Virginia	13.4%
Georgia	12.0%

Source: U.S. Census Bureau, Estimated 2014

Chart 5: Hospital Average Length of Stay
 All Hospital Unit Admissions (Excludes NH Unit Admissions)
 South Atlantic Census Region
 2006 - 2012



Source: AHA Hospital Statistics (2013 Edition)

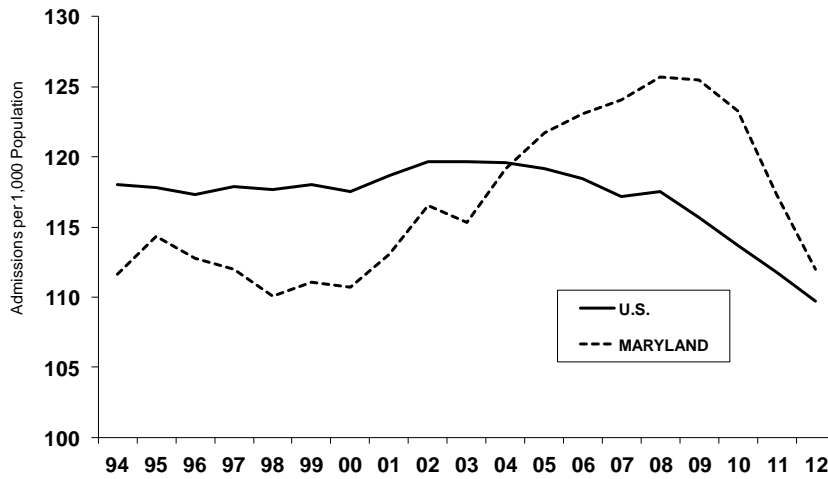
As will be noted, from a regional perspective, Maryland’s admissions rate has been lower than that of the states in the South Atlantic region with a higher percentage of population aged 65 and older, Florida and West Virginia, as would be expected. Maryland’s admissions rate does not compare well in this recent time period with the Carolinas, Delaware, or Virginia, all of which have only slightly older populations or populations comparable in age to that of Maryland. However, Maryland stands out as having a distinctly shorter average length of stay, when compared with these other states, as shown in Chart 5.

The following graphs, taken from the same data source, provide a longer-term perspective on Maryland and the Nation. Maryland had an enviable record with respect to admissions rate and average length of hospital stay in the 1990s but this changed during the previous decade. The hospital use rate in Maryland peaked in the 2008-09 period, at approximately 8-9% higher than the overall National use rate but has declined steeply in the following years.

Maryland has been steadily discharging hospital patients more quickly, on average, than has been the National experience. Some narrowing of the gap between Maryland’s ALOS and

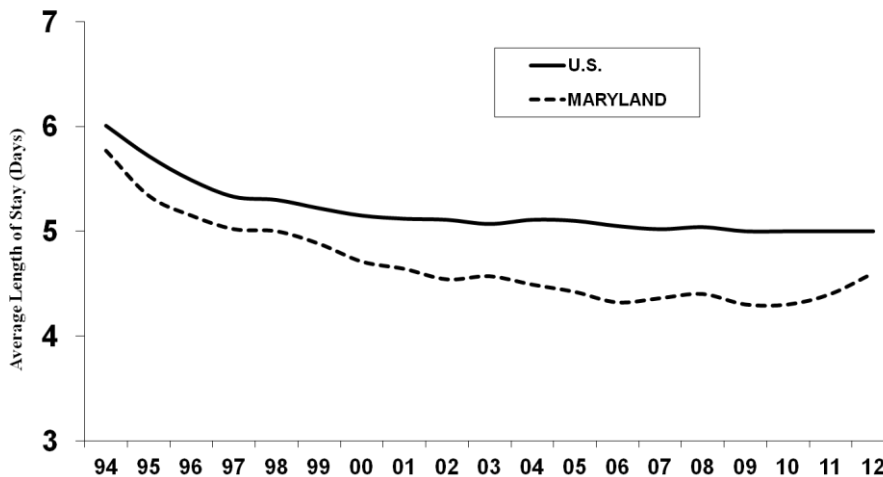
that of the U.S. has occurred as Maryland’s hospitals have reduced short stays, in many cases, replacing such stays with “observation” admissions that are not recorded as hospital admissions in this data. The Health Services Cost Review Commission initiated policy changes in recent years aimed at reducing very short-stay admissions, prompted by data indicating a relatively high proportion of one day stays in the State. Further narrowing of the gap between Maryland and the nation with respect to hospital length of stay can be anticipated.

**Chart 6: Hospital Admissions per 1,000 Population
All Hospital Unit Admissions (Excludes NH Unit Admissions)
U.S. and Maryland
1994-2012**



Source: AHA Hospital Statistics (Average of Published Rates, 2000, 2002-2007, 2009-2014 Editions)

**Chart 7: Hospital Average Length of Stay
All Hospital Unit Admissions (Excludes NH Unit Admissions)
U.S. and Maryland
1994-2012**



SOURCE: AHA HOSPITAL STATISTICS

Note concerning the AHA data: The American Hospital Association (AHA) conducts an annual survey of all hospitals, both AHA-registered and nonregistered, in the U.S. and its associated areas. AHA reports, overall, the average response rate over the past five years has been approximately 85 percent.

Critical Care Beds

Table 8 shows the FY 2015 inventory of critical care beds, which in the case of adult critical care beds, are a subset of MSGA beds. Adult critical care beds comprise 16.4% of the state's licensed MSGA bed inventory, ranging from 10.5% in Western Maryland to 17.3% and 17.0% of licensed MSGA beds in Southern Maryland and Central Maryland, respectively. Pediatric critical care beds comprise 17.1% of the state's licensed pediatric bed inventory.

**Table 8. Critical Care Bed Inventory:
Maryland Hospitals, FY 2015**

Jurisdiction/Region	Hospital	Critical Care Beds	
		Adult	Pediatric
Allegany County	Western Maryland Regional Medical Center	16	
Frederick County	Frederick Memorial Hospital	18	
Garrett County	Garrett County Memorial Hospital	2	
Washington County	Meritus Medical Center	24	
WESTERN MARYLAND TOTAL		60	0
Montgomery County	Holy Cross Hospital of Silver Spring	42	
	MedStar Montgomery General Hospital	12	
	Shady Grove Adventist Hospital	28	
	Suburban Hospital	42	
	Washington Adventist Hospital	34	
MONTGOMERY COUNTY TOTAL		158	0
Calvert County	Calvert Memorial Hospital	5	
Charles County	University of Maryland Charles Regional Medical Center	20	
Prince George's County	Doctors Community Hospital	24	
	Fort Washington Medical Center	4	
	Laurel Regional Hospital	10	
	MedStar Southern Maryland Hospital	24	
	Prince George's Hospital Center	34	
St. Mary's County	MedStar St. Mary's Hospital	12	
SOUTHERN MARYLAND TOTAL		133	0
Anne Arundel County	Anne Arundel Medical Center	20	
	University of Maryland Baltimore Washington Medical Center	30	
Baltimore City	Bon Secours Hospital	13	
	Johns Hopkins Bayview Medical Center	52	
	MedStar Good Samaritan Hospital	17	
	MedStar Harbor Hospital	17	
	MedStar Union Memorial Hospital	60	
	Mercy Medical Center	32	
	Sinai Hospital at Baltimore	35	6
	St. Agnes Hospital	28	2
	The Johns Hopkins Hospital	116	40
	University of Maryland Medical Center	266	24
	University of Maryland Medical Center Midtown Campus	13	
Baltimore County	University of Maryland Rehabilitation and Orthopaedics Institute	5	
	Greater Baltimore Medical Center	26	
	MedStar Franklin Square Hospital	28	
	Northwest Hospital Center	16	
	University of Maryland St. Joseph Medical Center	38	
Carroll County	Carroll Hospital Center	12	
Harford County	University of Maryland Harford Memorial Hospital	6	
Howard County	University of Maryland Upper Chesapeake Medical Center	14	
	Howard County General Hospital	16	
CENTRAL MARYLAND TOTAL		860	72
Cecil County	Union Hospital of Cecil County	5	
Dorchester County	University of Maryland Shore Medical Center at Dorchester	6	
Kent County	University of Maryland Shore Medical Center at Chestertown	6	
Somerset County	Edward W. McCready Memorial Hospital	0	
Talbot County	University of Maryland Shore Medical Center at Easton	10	
Wicomico County	Peninsula Regional Medical Center	42	
Worcester County	Atlantic General Hospital	6	
EASTERN SHORE TOTAL		75	0
MARYLAND STATE TOTAL		1,286	72

Source: Maryland Health Care Commission. Note: Adult critical care beds include all medical surgical intensive care and coronary care beds and excludes definitive observation/stepdown beds, pediatric intensive care beds and NICU bassinets. Adult critical care beds are part of the larger MSGA inventory.

*Johns Hopkins Bayview includes 10 Burn Critical Care Beds, and University of Maryland Medical Center includes 115 Shock Trauma Beds.

Monitored Beds

Monitored beds are beds which the hospital identified as equipped with cardiac monitoring. “Monitored” means that cardiac monitoring is available for identified hospital beds. Previously this meant a bed was hard-wired for cardiac monitoring. With the institution of remote centralized monitoring, a wireless transmitting system that can be viewed on a central surveillance system, cardiac monitoring is no longer dependent on a stationary bed being hard wired. Wireless monitoring can detect early warning signs and changes in a patient’s condition through the continuous automated collection of key vital signs.

Table 9 identifies the proportion of total licensed acute care beds, by hospital, which the hospital identified as equipped with cardiac monitoring.

From FY 2008 to FY 2012, the number of monitored beds reported by Maryland’s acute care general hospitals increased 32%, this compares to the 18% increase from FY 2008 to FY 2011, in part due to the increase of monitoring capability with the introduction of wireless centralized systems. While monitored beds as a percentage of all licensed beds, from FY 2008 to FY 2011 increased an average of 5.6% per year, in FY 2013, the increase in monitored beds was 12%. The increase for FY 2014 is 8.5%. The number of monitored beds reported by Maryland’s acute care hospitals increased from 55% of total licensed beds in FY 2013 to 60% for FY 2014, and 61.4% for FY2015.

In addition to collecting monitored bed inventories for licensed acute care beds, MHCC also compiles that data for bassinets for hospitals that provide obstetrical and newborn nursery services. Thirty-two hospitals provide obstetric and perinatal services and report a combined total of 1,383 newborn nursery bassinets; of these bassinets, 534 (38.6%) have monitoring capability.

**Table 9. Licensed Acute Care Beds with Monitoring Capability:
Maryland Hospitals, FY2015**

Jurisdiction/Region	Hospital Name	FY 2015 Licensed Beds	Monitorable Beds	Monitorable as % of Licensed Beds
Allegany County Frederick County Garrett County Washington County	Western Maryland Regional Medical Center	192	76	39.6%
	Frederick Memorial Hospital	258	237	91.9%
	Garrett County Memorial Hospital	23	23	100.0%
	Meritus Medical Center	231	160	69.3%
	WESTERN MARYLAND TOTAL	704	496	70.5%
Montgomery County	Holy Cross Hospital of Silver Spring	391	150	38.4%
	MedStar Montgomery General Hospital	120	46	38.3%
	Shady Grove Adventist Hospital	305	233	76.4%
	Suburban Hospital	220	104	47.3%
	Washington Adventist Hospital	232	145	62.5%
	MONTGOMERY COUNTY TOTAL	1,268	678	53.5%
Calvert County Charles County Prince George's County St. Mary's County	Calvert Memorial Hospital	85	42	49.4%
	University of Maryland Charles Regional Medical Center	115	103	89.6%
	Doctors Community Hospital	182	87	47.8%
	Fort Washington Medical Center	31	16	51.6%
	Laurel Regional Hospital	74	36	48.6%
	MedStar Southern Maryland Hospital Center	207	152	73.4%
	Prince George's Hospital Center	215	118	54.9%
	MedStar St. Mary's Hospital	82	56	68.3%
SOUTHERN MARYLAND TOTAL	991	610	61.6%	
Anne Arundel County Baltimore City Baltimore County Carroll County Harford County Howard County	Anne Arundel Medical Center	384	324	84.4%
	University of Maryland Baltimore Washington Medical Center	310	154	49.7%
	Bon Secours Hospital	88	50	56.8%
	Johns Hopkins Bayview Medical Center	337	159	47.2%
	MedStar Good Samaritan Hospital of Maryland	177	88	49.7%
	MedStar Harbor Hospital	120	97	80.8%
	MedStar Union Memorial Hospital	205	127	62.0%
	Mercy Medical Center	207	113	54.6%
	Sinai Hospital of Baltimore	407	169	41.5%
	St. Agnes Hospital	264	139	52.7%
	The Johns Hopkins Hospital	1,082	684	63.2%
	University of Maryland Medical Center	801	748	93.4%
	University of Maryland Medical Center Midtown Campus	110	91	82.7%
	University of Maryland Rehabilitation & Orthopaedic Institute	10	10	100.0%
	Greater Baltimore Medical Center	245	76	31.0%
	MedStar Franklin Square Hospital	354	154	43.5%
	Northwest Hospital Center	245	95	38.8%
	University of Maryland St. Joseph Medical Center	238	153	64.3%
	Carroll Hospital Center	147	54	36.7%
University of Maryland Harford Memorial Hospital	84	65	77.4%	
University of Maryland Upper Chesapeake Medical Center	183	137	74.9%	
Howard County General Hospital	259	126	48.6%	
CENTRAL MARYLAND TOTAL	6,257	3,813	60.9%	
Cecil County Dorchester County Kent County Somerset County Talbot County Wicomico County Worcester County	Union Hospital of Cecil County	75	34	45.3%
	University of Maryland Shore Medical Center at Dorchester	39	16	41.0%
	University of Maryland Shore Medical Center at Chestertown	31	31	100.0%
	Edward W. McCready Memorial Hospital	4	4	100.0%
	University of Maryland Shore Medical Center at Easton	112	46	41.1%
	Peninsula Regional Medical Center	275	257	93.5%
	Atlantic General Hospital	48	32	66.7%
	EASTERN SHORE TOTAL	584	420	71.9%
STATE TOTAL		9,804	6,017	61.4%

Source: MHCC Supplemental Survey: Inpatient Monitoring Capacity, FY2015. Data are self reported. Capacity for inpatient monitoring means cardiac monitoring is available for the reported numbers of beds. Note: The calculated percentage reflects total licensed beds and does not necessarily reflect the actual complement of beds set up and staffed by the hospital.

Hospital System Affiliation

Table 10 profiles the trend in licensed acute care beds for hospitals that are members of multihospital systems and for hospitals that are independent or are the only Maryland hospital in a multi-hospital system. Sixty-eight percent (68%) of Maryland's acute care general hospitals are part of the state's six multihospital systems.

Chart 8 shows the number of Maryland hospitals and beds that are part of a multihospital system and the number of hospitals and beds that are not part of a multihospital system in Maryland. Although there was little change from 2001 through 2007, the following eight years saw an increase in the number of hospitals joining multihospital systems.

Table 11 compares the growth and annual change in the number of hospitals and beds that are part of Maryland multihospital systems with hospitals that are independent, reflecting the annual percent change in the distribution of beds and the change during the last eight years (FY 2008 to FY 2015).

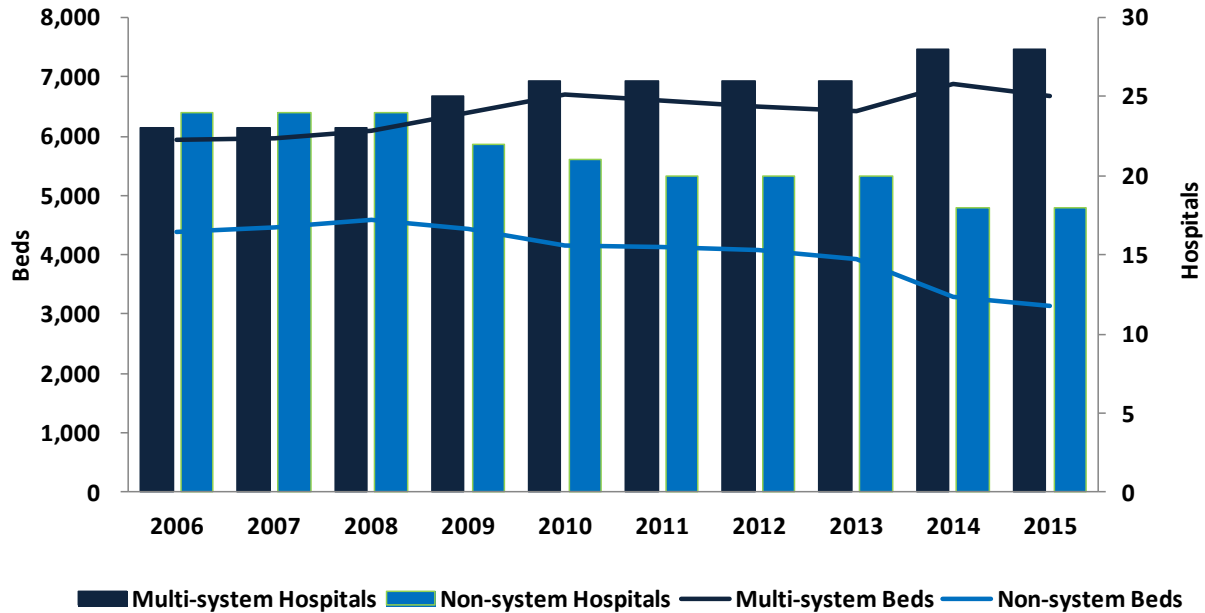
**Table 10. Trend in Licensed Acute Care Beds by System Affiliation:
Maryland Hospitals, FY 2005 - 2015**

System Name	System Hospitals	2006	2007	2008	2009	2010	2011	2012	2013	2014	2015	
Johns Hopkins Medical System (JHH)	The Johns Hopkins Hospital	956	958	982	979	990	994	992	1,000	1,060	1,082	
	Johns Hopkins Bayview Medical Center	316	323	333	345	346	348	348	355	355	337	
	Howard County General Hospital	204	208	219	209	227	238	249	249	253	259	
	Suburban Hospital	-	-	-	-	239	222	233	229	236	220	
	System Total	1,476	1,489	1,534	1,533	1,802	1,802	1,822	1,833	1,904	1,898	
University of Maryland Medical System (UMMS)	University of Maryland Medical Center	665	669	689	705	731	757	779	800	816	801	
	Univ. of MD Baltimore Washington Medical Center	278	286	293	298	311	321	308	307	319	310	
	Univ. of MD Medical Center Midtown Campus	196	205	209	191	180	167	164	155	128	110	
	Univ. of MD Rehabilitation & Orthopaedic Institute	10	11	10	11	10	10	9	9	10	10	
	Univ. of MD St. Joseph Medical Center	-	-	-	-	-	-	-	-	-	232	238
	Univ. of MD Charles Regional Medical Center	-	-	-	-	-	120	124	110	121	115	
Univ. of MD Shore Regional Health	Univ. of MD Shore Medical Center at Easton	-	120	123	120	125	120	116	112	112	112	
	Univ. of MD Shore Medical Center at Dorchester	-	53	49	54	54	53	52	46	41	39	
Univ. of MD Upper Chesapeake Health System	Univ. of MD Shore Medical Center at Chestertown	-	-	-	57	53	47	46	42	41	31	
	Univ. of MD Upper Chesapeake Medical Center	-	-	-	-	-	-	-	-	-	183	
	Univ. of MD Harford Memorial Hospital	-	-	-	-	-	-	-	-	-	84	
	System Total	1,149	1,344	1,373	1,436	1,464	1,595	1,598	1,581	1,820	2,033	
MedStar Health*	MedStar Franklin Square Hospital	343	357	362	380	371	376	347	355	347	354	
	MedStar Good Samaritan Hospital	279	265	265	245	236	235	222	224	206	177	
	MedStar Harbor Hospital	182	186	203	215	221	193	179	160	136	120	
	MedStar Montgomery Medical Center	-	-	-	165	170	159	158	138	132	120	
	MedStar Southern Maryland Hospital Center	-	-	-	-	-	-	-	-	-	227	207
	MedStar St. Mary's Hospital	-	-	-	-	-	96	90	90	89	82	
	MedStar Union Memorial Hospital	287	279	283	292	295	271	231	236	221	205	
	System Total	1,091	1,087	1,113	1,297	1,293	1,330	1,227	1,203	1,358	1,265	
LifeBridge Health	Sinai Hospital of Baltimore	392	393	398	415	413	424	416	426	421	407	
	Northwest Hospital Center	209	214	213	218	221	215	221	225	243	245	
	System Total	601	607	611	633	634	639	637	651	664	652	
Adventist HealthCare	Washington Adventist Hospital	292	285	294	292	288	281	271	252	252	232	
	Shady Grove Adventist Hospital	269	268	275	293	320	336	339	331	312	305	
	System Total	561	553	569	585	608	617	610	583	564	537	
Dimensions Healthcare System	Prince George's Hospital Center	269	268	264	246	254	244	242	224	214	215	
	Laurel Regional Hospital	108	96	95	97	95	87	83	77	78	74	
	System Total	377	364	359	343	349	331	325	301	292	289	
Western Maryland Medical (Health) System	Braddock Hospital (Closed 2010)	144	148	155	154	154	-	-	-	-	-	
	Memorial Hosp & Med Ctr of Cumberland (Closed 2010)	124	120	109	117	108	-	-	-	-	-	
	Western Maryland Regional Medical Center	-	-	-	-	-	-	-	-	-	-	
	System Total	268	268	264	271	262	-	-	-	-	-	
Upper Chesapeake Health System	Upper Chesapeake Medical Center	149	167	168	182	196	186	175	181	185	-	
	Harford Memorial Hospital	91	94	91	104	105	101	97	89	89	-	
	System Total	240	261	259	286	301	287	272	270	274	-	
Shore Health System	Memorial Hospital at Easton	129	-	-	-	-	-	-	-	-	-	
	Dorchester General Hospital	58	-	-	-	-	-	-	-	-	-	
	System Total	187	-	-	-	-	-	-	-	-	-	
Total: System Hospitals		5,950	5,973	6,082	6,384	6,713	6,601	6,491	6,422	6,876	6,674	
Non-System Hospitals	Year of System Affiliation/ System/ Current Name	2006	2007	2008	2009	2010	2011	2012	2013	2014	2015	
Anne Arundel Medical Center		265	265	278	301	316	324	336	380	385	384	
Atlantic General Hospital		40	49	51	53	55	53	53	48	45	48	
Bon Secours Hospital		142	141	151	125	126	141	127	115	107	88	
Calvert Memorial Hospital		105	107	105	106	98	98	95	95	92	85	
Carroll Hospital Center		199	210	216	218	213	195	189	158	151	147	
Chester River Hospital Center	2009/UMMS/Univ. of MD Shore Med. Ctr. at Chestertown	57	58	62	-	-	-	-	-	-	-	
Civista Medical Center	2011/UMMS/Univ. of MD Charles Regional Med. Ctr.	117	109	121	129	120	-	-	-	-	-	
Doctors Community Hospital		181	186	192	195	190	195	219	207	198	182	
Edward W. McCready Memorial Hospital		8	9	8	9	8	8	9	5	4	4	
Fort Washington Medical Center		41	42	42	43	43	42	41	31	33	31	
Frederick Memorial Hospital		232	227	246	269	274	276	309	298	297	258	
Garrett County Memorial Hospital		33	31	34	36	33	31	30	29	26	23	
Greater Baltimore Medical Center		287	292	298	310	300	285	281	270	255	245	
Holy Cross Hospital of Silver Spring		365	379	404	408	404	402	409	396	397	391	
Mercy Medical Center		228	224	235	243	244	244	226	233	225	207	
Meritus Medical Center		246	243	264	258	260	258	252	245	237	231	
Montgomery General Hospital	2009/MedStar/MedStar Montgomery General Hosp.	144	144	149	-	-	-	-	-	-	-	
Peninsula Regional Medical Center		360	371	366	362	358	362	363	317	288	275	
S		308	323	314	307	318	314	296	287	276	264	
St. Joseph Medical Center	2013/UMMS/Univ. of MD St. Joseph Medical Ctr.	342	370	364	354	345	300	263	247	-	-	
St. Mary's Hospital	2010/MedStar/MedStar St. Mary's	88	105	108	108	103	-	-	-	-	-	
Southern Maryland Hospital Center	2013/MedStar/MedStar Southern MD Hosp. Ctr.	246	257	258	255	246	235	238	239	-	-	
Suburban Hospital	2010/JHH/No Change	228	212	228	238	-	-	-	-	-	-	
Union Hospital of Cecil County		111	99	105	116	113	113	106	92	85	75	
Western Maryland Regional Medical Ctr.		-	-	-	-	-	252	250	234	200	192	
Total: Non-System Hospitals		4,373	4,453	4,599	4,443	4,167	4,128	4,092	3,926	3,301	3,130	
Maryland Total		10,323	10,426	10,681	10,827	10,880	10,729	10,583	10,348	10,177	9,804	

Source: Maryland Health Care Commission. Systems are multi-hospital systems with more than one hospital in Maryland. *Two general hospitals located in Washington, D.C. are part of the MedStar Health System, the Washington Hospital Center with 926 licensed beds and Georgetown University with 609 licensed beds. The total number of beds operated by MedStar, including Washington Hospital Center and Georgetown University Hospital is 2,800.

Note: Shore Health System became University of Maryland Shore Regional Health on July 1, 2013, and Upper Chesapeake Health System became University of Maryland Upper Chesapeake Health of July 1, 2014.

Chart 8. Comparison of Multihospital Systems and Non-Multihospital System Hospitals, Maryland FY2006 - FY2015



**Table 11. Multihospital Systems and Hospitals and Beds by System Status
Maryland FY2008 - FY2015**

System Status	2008	2009	Annual Change	2010	Annual Change	2011	Annual Change	2012	Annual Change	2013	Annual Change	2014	Annual Change	2015	Annual Change	Change 2008-2015
Multihospital Systems	8	8		8		7		7		7		7		6		
Multihospital System Hospitals	23	25		26		26		26		26		28		28		21.7%
Beds	6,082	6,384	5.0%	6,713	5.2%	6,601	-1.7%	6,491	-1.7%	6,422	-1.1%	6,876	7.1%	6,674	-2.9%	9.7%
Percent of Maryland Hospitals	50%	53%		55%		57%		57%		56.5%		63.0%		60.9%		
Percent of Beds	57%	59%		62%		62%		61%		62.1%		67.6%		68.1%		
Non-system Hospitals	24	22		21		20		20		20		18		18		-25.0%
Beds	4,599	4,443	-3.4%	4,167	-6.2%	4,128	-0.9%	4,092	-0.9%	3,926		3,301	-15.9%	3,130	-5.2%	-31.9%
Percent of Maryland Hospitals	51%	47%		45%		43%		43%		43.5%		39.1%		39.1%		
Percent of Beds	43%	41%		38%		38%		39%		37.9%		32.4%		31.9%		
Total Acute General Hospital	47	47		47		46		46		46		46		46		-2.1%
Total Beds	10,681	10,827	1.4%	10,880	0.5%	10,729	-1.4%	10,583	-1.4%	10,348	-2.2%	10,177	-1.7%	9,804	-3.7%	-8.2%

Source: Maryland Health Care Commission

Total Available Acute Care Bed Capacity

The Commission surveys hospitals for the total number of acute care beds they could physically accommodate, if necessary. Available acute care bed capacity is defined as the total number of acute inpatient beds that are available for use, or that could be physically set up in space appropriate for licensed acute inpatient care, as admissions might warrant. It is a physical count of beds based on the available patient rooms with headwalls, measuring the maximum operating capacity under normal, non-emergency circumstances, rather than a measure of staffing capacity.

The survey shows that 38 general hospitals in Maryland with 5,881 licensed acute care beds report the availability of physical bed capacity that exceeds their licensed capacity. These 38 hospitals, in the aggregate, report a physical capacity for 7,877 beds. This excess physical bed capacity (1,996 beds) would potentially be available to accommodate short term growth in demand and, if necessary, major emergencies and disasters, so long as staffing resources could be secured. Central Maryland has the greatest excess, with reported physical bed capacity exceeding licensed bed capacity by 614 beds, followed by Southern Maryland with 495 more physical beds than licensed beds.

Seven hospitals report that their physical capacity to set up acute care beds, as of June, 2014, is less than their licensed bed capacity. These hospitals have a combined total of 3,516 licensed acute care beds and report that, in the aggregate, they only have physical capacity to set up 3,262 acute care beds, a difference of 254 beds.

Statewide, the Commission's June 1, 2014 survey identifies a net of 1,742 beds of physical bed capacity in excess of licensed bed capacity. The results of this survey are shown in Table 12.¹

¹ The data are self-reported and not verified by the Commission. To the extent possible, the Commission verifies hospital physical bed capacity on a case by case basis, when reviewing hospital expansion, renovation, and replacement projects submitted under the Certificate of Need Program.

Table 12. Total Available Physical Acute Care Bed Capacity Reported by Maryland Hospitals, June 1, 2014

Hospital Name	Licensed Beds FY 2015	Total Available Physical Capacity	Difference
Anne Arundel Medical Center	384	366	(18)
Atlantic General Hospital	48	62	14
Bon Secours Hospital	88	152	64
Calvert Memorial Hospital	85	126	41
Carroll Hospital Center	147	215	68
Doctors Community Hospital, Inc.	182	218	36
Edward W. McCready Memorial Hospital	4	26	22
Fort Washington Medical Center	31	37	6
Frederick Memorial Hospital	258	315	57
Garrett County Memorial Hospital	23	45	22
Greater Baltimore Medical Center, Inc.	245	342	97
Holy Cross Hospital	391	379	(12)
Howard County General Hospital	259	238	(21)
Johns Hopkins Bayview Medical Center	337	348	11
Laurel Regional Hospital	74	171	97
MedStar Franklin Square Hospital Center	354	342	(12)
MedStar Good Samaritan Hospital	177	253	76
MedStar Harbor Hospital	120	213	93
MedStar Montgomery Medical Center	120	187	67
MedStar Southern Maryland Hospital Center	207	339	132
MedStar St. Mary's Hospital	82	129	47
MedStar Union Memorial Hospital	205	308	103
Mercy Medical Center, Inc.	207	238	31
Meritus Medical Center	231	258	27
Northwest Hospital Center	245	224	(21)
Peninsula Regional Medical Center	275	380	105
Prince George's Hospital Center	215	311	96
Shady Grove Adventist Hospital	305	342	37
Sinai Hospital of Baltimore	407	407	0
St. Agnes Hospital	264	367	103
Suburban Hospital	220	247	27
The Johns Hopkins Hospital	1082	971	(111)
Union Hospital of Cecil County	75	118	43
University of Maryland Baltimore Washington Medical Center	310	320	10
University of Maryland Charles Regional Medical Center	115	155	40
University of Maryland Harford Memorial Hospital, Inc.	84	128	44
University of Maryland Medical Center	801	742	(59)
University of Maryland Medical Center Midtown Campus	110	159	49
University of Maryland Rehabilitation & Orthopaedic Institute	10	28	18
University of Maryland Shore Medical Center at Chestertown	31	46	15
University of Maryland Shore Medical Center at Dorchester	39	80	41
University of Maryland Shore Medical Center at Easton	112	150	38
University of Maryland St. Joseph Medical Center	238	315	77
University of Maryland Upper Chesapeake Medical Center	183	195	12
Washington Adventist Hospital	232	304	72
Western Maryland Regional Medical Center	192	250	58
TOTAL	9,804	11,546	1,742

Source: Maryland Health Care Commission

Note: Total available physical capacity is defined as the total number of acute inpatient beds that are available for use, including those that could be physically set up in space appropriate for licensed acute inpatient care as admissions might warrant. This should be a count of potentially available physical bed capacity rather than a measure of staffing capacity or a reflection of current use of patient care rooms. This is determined by the number of headwalls and/or gas lines that could be made available for inpatient use, without renovations. Rooms with two headwalls/gas lines should be counted as having capacity for two beds, and rooms with one headwall/gas line should be counted as having capacity for one bed, regardless of their current use. It does not include space currently used for non-acute or special hospital beds.

Observation Services

Observation services are those services furnished by the hospital on the hospital's premises, including use of a bed and periodic monitoring by the hospital's nursing or other staff, which are reasonable and necessary to determine the need for a possible admission to the hospital as an inpatient. Such services must be ordered and documented in writing as to time and method (FAX, telephone, etc.) by a medical staff practitioner. Observation services may or may not be provided in a distinct area of the hospital. Observation services include, but are not limited to; monitoring of vital life signs; collecting laboratory samples for diagnostic testing, use of specialized equipment assisting physicians during patient examination and treatment; changing of dressings and cleaning of wounds and incisions; observing and recording the emotional stability of patients; observing patients for reaction to drugs; administering specified medication; and infusing fluids intravenously.

Observation services are identified as a cost center by the Maryland Health Services Cost Review Commission and the standard unit of measure is hours. Extended recovery time for scheduled ambulatory surgery, emergency and/or labor and delivery observation are separate cost centers and are not included in observation services.

Beginning in 2012, hospitals were asked to report whether they use licensed beds, distinct unit (non-licensed) observation beds, or a combination of both licensed and distinct unit observation beds to provide services to observation patients. If distinct unit observation beds were used, the hospitals reported how many distinct unit observation beds were available. The hospitals were also asked if there were plans to expand the number of distinct unit observation beds and, if so, how many beds would be added. Finally, the hospitals were requested to report how many licensed beds were occupied by observation patients on an average day in the past twelve months.

As of June 1, 2014, sixteen hospitals report the existence of distinct unit observation beds. However, only two hospitals use distinct unit observation beds exclusively. Twenty-seven (27) hospitals use licensed beds only and 16 hospitals use a combination of distinct unit observation beds and licensed beds.² The total number of distinct unit observation beds available for all

Maryland hospitals is 267, an increase of 76 distinct observation beds since June 1, 2013. Six hospitals reported that they plan to expand the number of distinct unit observation beds within the next twelve months. The total additional distinct unit observation beds anticipated is 50.

Table 13 below shows the responses as reported by each hospital and Table 14 provides a summary of all Maryland.

² The University of Maryland Rehabilitation and Orthopaedic Institute does not report the provision of observation services and does not operate an emergency department.

**Table 13. Maryland Acute Care General Hospital Observation (OBV) Services
June 1, 2014**

Hospital Name	Distinct Unit Observation Beds Only	Licensed Beds Only	Combination of Distinct Unit Observation and Licensed Beds	Number of Distinct Unit Observation Beds Available	Average Daily Census/ Observation Patients	Planned Expansion of Distinct Unit Observation Beds	Number of Beds Planned for Expansion
Frederick Memorial Hospital		√			18.0		
Garrett County Hospital		√			2.0		
Meritus Medical Center			√	14	14.0		
Western Maryland Regional Medical Center	√			20	12.0		
Western Maryland Total	1	2	1	34	11.5	-	-
Holy Cross Hospital of Silver Spring			√	19	16.0		
MedStar Montgomery General Hospital			√	12	4.0		
Shady Grove Adventist Hospital			√	16	20.0		
Suburban Hospital			√	16	18.0		
Washington Adventist Hospital		√			6.0	yes	8
Montgomery County Total	0	1	4	63	16.0	1	8
Calvert Memorial Hospital		√			7.8	yes	5
Doctors Community Hospital			√	15	21.0		
Fort Washington Medical Center		√			6.0	yes	8
Laurel Regional Hospital		√			6.0		
MedStar Southern Maryland Hospital Center		√			27.0		
MedStar St. Mary's Hospital		√			10.1		
Prince George's Hospital Center [1]			√	16	16.0		
University of Maryland Charles Regional Medical Center		√			10.0		
Southern Maryland Total	0	6	2	31	13.0	2	13
Anne Arundel Medical Center			√	17	14.0		
Bon Secours Hospital		√			11.3		
Carroll Hospital Center		√			9.0		
Greater Baltimore Medical Center		√			17.0		
Howard County General Hospital			√	13	13.0		
Johns Hopkins Bayview Medical Center		√			12.1	yes	17
MedStar Franklin Square Hospital			√	24	45.0		
MedStar Good Samaritan Hospital		√			14.0		
MedStar Harbor Hospital			√	12	16.0		
MedStar Union Memorial Hospital			√	12	12.0		
Mercy Medical Center		√			9.1		
Northwest Hospital Center		√			6.2		
Sinai Hospital of Baltimore		√			17.3	yes	12
St. Agnes Hospital		√			24.7		
The Johns Hopkins Hospital [2]		√			N/A		
University of Maryland Baltimore Washington Medical Center		√			20.0		
University of Maryland Harford Memorial Hospital		√			11.0		
University of Maryland Medical Center			√	10	14.9		
University of Maryland Medical Center Midtown Campus		√			9.0		
University of Maryland Rehabilitation & Orthopaedic Institute [3]	-	-	-	-	-	-	-
University of Maryland St. Joseph Medical Center			√	10	5.0		
University of Maryland Upper Chesapeake Medical Center [4]			√	10	25.0	yes	
Central Maryland Total	0	13	8	108	15.3	3	29
Atlantic General Hospital		√			3.2		
Edward W. McCready Memorial Hospital		√			1.0		
Peninsula Regional Medical Center [5]	√			18	8.0		
Union Hospital of Cecil County			√	13	6.0		
University of Maryland Shore Medical Center at Chestertown		√			2.5		
University of Maryland Shore Medical Center at Dorchester		√			12.0		
University of Maryland Shore Medical Center at Easton		√			3.0		
Eastern Shore Total	1	5	1	31	5.1	0	0
MARYLAND STATE TOTAL	2	27	16	267	12.2	6	50

Source: MHCC, Supplemental Survey Observation Services, June 1, 2014.

Notes: [1] Prince George's Hospital opened a distinct observation unit with 16 beds on 7/11/2014. [2] At the time of publication of this report, The Johns Hopkins Hospital was reporting anomalous information to both MHCC and HSCRC concerning observation hours and visits. [3] University of Maryland Rehabilitation and Orthopaedic Institute does not provide emergency services and does not have observation services. [4] University Upper Chesapeake Medical Center has not determined how many beds will be allocated to a distinct observation unit. [5] Peninsula Regional Medical Center opened a distinct observation unit with 18 beds on 8/6/2014.

Table 14. Summary - Acute Care Hospital Observation Beds, June 1, 2014

Observation Services	Total Hospitals	Total Distinct Unit Observation Beds
Distinct Unit Observation Beds Only	2	38
Licensed Beds Only	27	-
Combined Distinct Unit/Licensed Observation Beds	16	229
Total Number of Distinct Unit Observation Beds, All Hospitals	18	267
Hospitals with Planned Expansion	6	
Number of Proposed Distinct Unit Observation Beds*	50	

Source: Maryland Health Care Commission. *University of Maryland Upper Chesapeake has not determined how many distinct observation beds it will provide.

Emergency Department/ Freestanding Medical Facility Treatment Capacity

Maryland has 45 emergency departments located in acute care hospitals and three freestanding emergency treatment facilities operated by hospitals, licensed as “freestanding medical facilities.”³ The freestanding medical facilities are: (1) Bowie Health Center, located in Bowie (Prince George’s County) and operated by Prince George’s Hospital Center, with 15 treatment spaces allocated to emergency care; (2) Shady Grove Emergency Center at Germantown in Montgomery County with 21 treatment spaces, and operated by Shady Grove Adventist Hospital; and (3) Queen Anne’s Emergency Center, operated by University of Maryland Medical Center at Easton, with 14 treatment spaces. This facility is located near Grasonville in Queen Anne’s County.

Table 15 shows the change in emergency treatment capacity from a regional perspective. Four (4) emergency departments report an increase in treatment capacity in the past year. Six of the 45 emergency departments and one (1) of the freestanding medical facilities, showed a decline in the number of treatment spaces from 2013 to 2014. Overall, Maryland emergency departments/facilities reported an increase of 30 treatment spaces.

³ University of Maryland Rehabilitation and Orthopaedic Institute (previously James Lawrence Kernan Hospital) in Baltimore City is the only acute care hospital in Maryland that does not operate an emergency department.

**Table 15. Change in Emergency Department/ Freestanding Medical Facility Treatment Capacity:
Maryland, 2013 - 2014**

REGION	Total Number of Emergency Departments and Freestanding Medical Facilities	Net Change in Emergency Treatment Spaces	Percent Change in Capacity in Emergency Treatment Spaces	Emergency Departments or Freestanding Medical Facilities with an Increase in Capacity	Emergency Departments or Freestanding Medical Facilities with a Decrease in Capacity	Emergency Departments or Freestanding Medical Facilities with No Change in Capacity
Western Maryland	4	(9)	-4.9%	0	1	3
Montgomery County*	6	(1)	-0.4%	0	1	5
Southern Maryland*	9	(7)	-2.2%	0	2	7
Central Maryland**	21	48	4.2%	4	2	15
Eastern Shore*	8	0	0.0%	0	0	8
State Total	48	31	1.5%	4	6	38

Source: Maryland Health Care Commission. *Montgomery County includes Shady Grove Emergency Center at Germantown, Southern Maryland includes emergency treatment capacity at the Bowie Health Center, and the Eastern Shore includes the Queen Anne's Emergency Center.

**The Johns Hopkins Hospital operates 2 distinct emergency centers, the main emergency department and a pediatric emergency department, the emergency departments are combined and reported as one in Table 15.

Note: University of Maryland Rehabilitation & Orthopaedic Institute does not provide emergency services.

Table 16 summarizes the Commission's supplemental survey of emergency department treatment capacity by hospital or freestanding medical facility and jurisdiction and region, identifying how Maryland's hospitals classify their emergency department or freestanding medical facility treatment spaces.

**Table 16. Inventory of Emergency Department/ Freestanding Medical Facility Treatment Capacity:
Maryland: June 1, 2014**

Jurisdiction/Region	Hospital Name	Treatment Spaces			Non-Treatment Spaces*
		Total Treatment Spaces	Monitored Spaces	Non-Monitored Spaces	
Allegany County	Western Maryland Regional Medical Center	53	30	23	4
Frederick County	Frederick Memorial Hospital	55	23	32	3
Garrett County	Garrett County Hospital	13	12	1	2
Washington County	Meritus Medical Center	55	44	11	1
	WESTERN MARYLAND TOTAL	176	109	67	10
Montgomery County	Holy Cross Hospital of Silver Spring	61	34	27	8
	MedStar Montgomery General Hospital	41	32	9	3
	Shady Grove Adventist Emergency Center/Germantown	21	9	12	2
	Shady Grove Adventist Hospital	64	31	33	0
	Suburban Hospital	42	29	13	3
	Washington Adventist Hospital	26	15	11	0
	MONTGOMERY COUNTY TOTAL	255	150	105	16
Calvert County	Calvert Memorial Hospital	34	22	12	3
Charles County	University of Maryland Charles Regional Medical Center	38	21	17	3
Prince George's County	Doctors Community Hospital	55	47	8	3
	Fort Washington Medical Center	18	7	11	1
	Laurel Regional Hospital	31	31	0	0
	Prince George's Hospital Center	46	21	25	1
	Bowie Health Center	15	7	8	2
	MedStar Southern Maryland Hospital Center	41	28	13	3
St. Mary's County	MedStar St. Mary's Hospital	32	20	12	6
	SOUTHERN MARYLAND TOTAL	310	204	106	22
Anne Arundel County	Anne Arundel Medical Center	67	61	6	12
	University of Maryland Baltimore Washington Medical Ctr.	66	61	5	5
Baltimore City	Bon Secours Hospital	28	21	7	1
	Johns Hopkins Bayview Medical Center	40	22	18	6
	MedStar Good Samaritan Hospital	43	23	20	3
	MedStar Harbor Hospital	35	21	14	1
	MedStar Union Memorial Hospital	55	24	31	1
	Mercy Medical Center	57	47	10	3
	Sinai Hospital of Baltimore	61	46	15	12
	St. Agnes Hospital	64	48	16	6
	The Johns Hopkins Hospital - Main ED	73	73	0	0
	The Johns Hopkins Hospital - Pediatric ED	35	35	0	2
	University of Maryland Medical Center	123	61	62	4
	University of Maryland Medical Center Midtown Campus	30	24	6	2
Baltimore County	Greater Baltimore Medical Center	45	31	14	5
	MedStar Franklin Square Hospital	96	75	21	1
	Northwest Hospital Center	54	50	4	1
	University of Maryland St. Joseph Medical Center	38	38	1	5
Carroll County	Carroll Hospital Center	43	29	14	6
Harford County	University of Maryland Harford Memorial Hospital	29	27	2	0
	University of Maryland Upper Chesapeake Medical Center	55	47	8	3
Howard County	Howard County General Hospital	55	49	6	20
	CENTRAL MARYLAND TOTAL	1,192	913	280	99
Cecil County	Union Hospital of Cecil County	32	18	14	2
Dorchester County	University of Maryland Shore Medical Center at Dorchester	18	18	0	0
Kent County	University of Maryland Shore Medical Center at Chestertown	11	10	1	1
Queen Anne's County	Queen Anne's Emergency Center	14	14	0	1
Somerset County	Edward W. McCready Memorial Hospital	8	6	2	0
Talbot County	University of Maryland Shore Medical Center at Easton	34	32	2	2
Wicomico County	Peninsula Regional Medical Center	51	34	17	0
Worcester County	Atlantic General Hospital	30	7	23	5
	EASTERN SHORE TOTAL	198	139	59	11
	MARYLAND STATE TOTAL	2,131	1,515	617	158

Source: Maryland Health Care Commission

*Non-treatment spaces in Emergency Departments include decontamination, observation/holding, and triage spaces in which treatment is not provided.

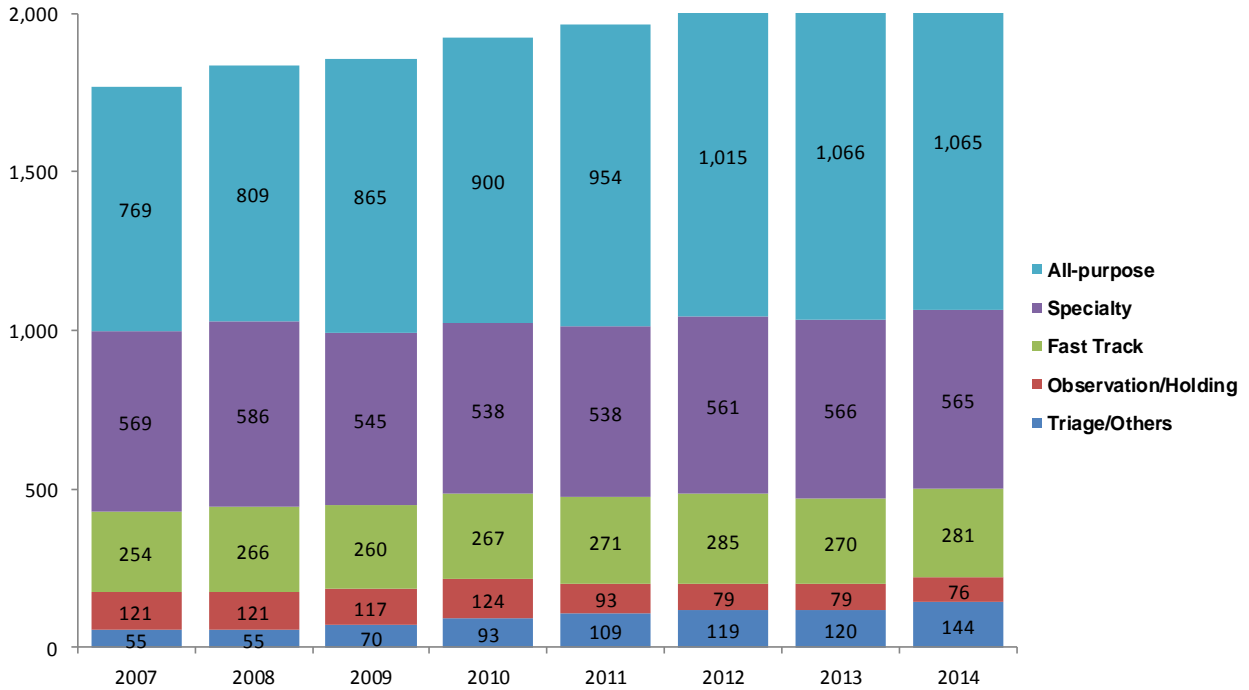
Table 17 shows the trend in emergency department/freestanding medical facility treatment capacity in Maryland from 2008 to 2014 by region, jurisdiction and hospital/facility. Chart 9 shows the change in the types of treatment spaces in Maryland.

Table 17. Trends in Emergency Department/ Freestanding Medical Facilities Treatment Capacity: Maryland, June 1, 2008 - June 1, 2014

Jurisdiction/Region	Hospital Name	Total Treatment Spaces						
		2008	2009	2010	2011	2012	2013	2014
Allegheny County	Braddock Hospital (formerly Sacred Heart)	16	16	-	-	-	-	-
	Memorial Hospital of Cumberland	21	20	-	-	-	-	-
	Western Maryland Regional Medical Center	-	-	51	53	53	53	53
Frederick County	Frederick Memorial Hospital	64	64	64	64	64	64	55
Garrett County	Garrett County Memorial Hospital	13	13	13	13	13	13	13
Washington County	Meritus Medical Center	48	48	48	55	55	55	55
	WESTERN MARYLAND TOTAL	162	161	176	185	185	185	176
Montgomery County	Holy Cross Hospital of Silver Spring	54	60	59	59	59	61	61
	MedStar Montgomery General Hospital	32	32	41	41	41	41	41
	Shady Grove Adventist Emergency Ctr. at Germantown	21	21	21	21	21	21	21
	Shady Grove Adventist Hospital	56	61	63	64	64	64	64
	Suburban Hospital	43	43	43	43	43	43	42
	Washington Adventist Hospital	26	28	28	26	26	26	26
	MONTGOMERY COUNTY TOTAL	232	245	255	254	254	256	255
Calvert County	Calvert Memorial Hospital	34	34	34	34	34	34	34
Charles County	University of Maryland Charles Regional Medical Center	30	30	30	30	30	38	38
Prince George's County	Doctors Community Hospital	32	32	55	55	55	55	55
	Fort Washington Medical Center	18	18	18	18	18	18	18
	Laurel Regional Hospital	30	30	30	30	30	31	31
	MedStar Southern Maryland Hospital Center	28	28	29	34	42	42	41
	Prince George's Hospital Center	44	44	44	44	44	47	46
	Bowie Health Center	21	21	21	21	21	21	15
St. Mary's County	MedStar St. Mary's Hospital	30	30	32	32	32	32	32
	SOUTHERN MARYLAND TOTAL	267	267	293	298	306	318	310
Anne Arundel County	Anne Arundel Medical Center	44	44	44	49	67	67	67
	University of MD Baltimore Washington Medical Center	57	66	66	66	66	66	66
Baltimore City	Bon Secours Hospital	32	32	29	32	32	28	28
	Johns Hopkins Bayview Medical Center	39	39	40	40	40	40	40
	MedStar Good Samaritan Hospital of Maryland	34	34	45	43	43	43	43
	MedStar Harbor Hospital	34	35	35	35	35	35	35
	MedStar Union Memorial Hospital	49	49	49	49	49	49	55
	Mercy Medical Center	45	45	45	45	45	57	57
	Sinai Hospital of Baltimore	61	61	61	61	61	61	61
	St. Agnes Hospital	53	53	53	53	59	64	64
	The Johns Hopkins Hospital - Main ED	54	51	51	51	73	73	73
	The Johns Hopkins Hospital - Pediatric ED	25	25	25	25	35	35	35
	The Johns Hopkins Hospital - Ophthalmology ED	6	-	-	-	-	-	-
	University of Maryland Medical Center	52	58	62	62	79	85	123
	University of Maryland Medical Center Midtown Campus	25	25	25	25	29	28	30
Baltimore County	Greater Baltimore Medical Center	45	45	45	45	45	45	45
	MedStar Franklin Square Hospital	98	98	98	96	96	96	96
	Northwest Hospital Center	38	42	43	42	44	49	54
	University of Maryland St. Joseph Medical Center	49	44	39	39	39	39	38
Carroll County	Carroll Hospital Center	39	39	39	45	43	43	43
Harford County	University of Maryland Harford Memorial Hospital	31	31	31	31	29	29	29
	University of MD Upper Chesapeake Medical Center	52	52	52	52	52	57	55
Howard County	Howard County General Hospital	55	55	55	55	55	55	55
	CENTRAL MARYLAND TOTAL	1,017	1,023	1,032	1,041	1,116	1,144	1,192
Cecil County	Union Hospital of Cecil County	27	27	32	32	32	32	32
Dorchester County	University of Maryland Medical Center at Dorchester	11	11	11	18	18	18	18
Kent County	University of Maryland Medical Center at Chestertown	11	11	11	11	11	11	11
Queen Anne's County	Queen Anne's Emergency Center	-	-	-	14	14	14	14
Somerset County	Edward W. McCready Memorial Hospital	8	8	8	8	8	8	8
Talbot County	University of Maryland Shore Medical Center at Easton	32	34	34	34	34	34	34
Wicomico County	Peninsula Regional Medical Center	51	51	51	51	51	51	51
Worcester County	Atlantic General Hospital	19	19	19	19	30	30	30
	EASTERN SHORE TOTAL	159	161	166	187	198	198	198
	STATE TOTAL	1,837	1,857	1,922	1,965	2,059	2,101	2,131

Source: Maryland Health Care Commission, Supplemental Survey - Emergency Departments/Freestanding Medical Facilities, 2007 - 2014

**Chart 9. Change in Number of Emergency Treatment Spaces by Type of Space:
Maryland, 2007 - 2014**



Source: Maryland Health Care Commission

Hospital Surgical Services Capacity

Table 18 displays the inventory of sterile operating rooms, by room type, excluding dedicated cesarean section rooms, reported by Maryland hospitals. Table 19 profiles the inventory of dedicated cesarean section operating rooms and procedure rooms. Procedure rooms are rooms used for endoscopy, cystoscopy, or other minor procedures and many are not sterile rooms, and thus, are only appropriately used for “closed” procedures that do not involve surgical incisions.

**Table 18. Surgical Services Capacity by Hospital and Room Use:
Maryland Hospitals, June 1, 2014**

Hospital	Inpatient General Purpose	Outpatient General Purpose	Mixed Use General Purpose	Inpatient Special Purpose	Outpatient Special Purpose	Mixed Use Special Purpose	Other Operating Rooms	Total Operating Rooms
Anne Arundel Medical Center	0	0	26	0	0	0	0	26
Atlantic General Hospital	0	0	4	0	0	0	0	4
Bon Secours Hospital	0	0	5	0	0	0	0	5
Calvert Memorial Hospital	0	0	6	0	0	0	0	6
Carroll Hospital Center	0	0	10	0	0	0	0	10
Doctors Community Hospital	0	3	7	0	0	0	0	10
Edward W. McCready Memorial Hospital	0	0	2	0	0	0	0	2
Fort Washington Medical Center	0	0	3	0	0	0	0	3
Frederick Memorial Hospital	0	0	11	0	0	0	0	11
Garrett County Memorial Hospital	0	0	3	0	0	0	0	3
Greater Baltimore Medical Center	0	0	30	0	0	0	0	30
Holy Cross Hospital of Silver Spring	0	0	14	0	0	0	0	14
Howard County General Hospital	0	0	13	0	0	0	0	13
Johns Hopkins Bayview Medical Center	0	0	14	0	0	0	0	14
Laurel Regional Hospital	0	0	6	0	0	0	1	7
MedStar Franklin Square Hospital	0	0	15	0	0	1	0	16
MedStar Good Samaritan Hospital of Maryland	0	0	10	0	0	1	0	11
MedStar Harbor Hospital	0	0	9	0	0	0	0	9
MedStar Montgomery General Hospital	0	0	5	1	0	0	0	6
MedStar Southern Maryland Hospital Center	0	5	5	0	0	0	0	10
MedStar St. Mary's Hospital	0	0	5	0	0	0	0	5
MedStar Union Memorial Hospital	0	0	21	0	0	0	0	21
Mercy Medical Center	0	0	19	0	0	0	3	22
Meritus Medical Center	0	0	11	0	0	0	0	11
Northwest Hospital Center	0	0	8	0	0	0	0	8
Peninsula Regional Medical Center	0	0	10	0	0	3	0	13
Prince George's Hospital Center	1	0	8	0	0	0	0	9
Shady Grove Adventist Hospital	0	0	16	0	0	0	0	16
Sinai Hospital of Baltimore	1	4	12	2	0	6	0	25
St. Agnes Hospital	0	0	19	0	0	0	0	19
Suburban Hospital	0	0	12	2	1	0	0	15
The Johns Hopkins Hospital	0	8	46	0	7	0	0	61
Union Hospital of Cecil County	0	0	4	0	0	2	0	6
University of Maryland Baltimore Washington Medical Center	0	0	16	0	0	0	0	16
University of Maryland Charles Regional Medical Center	0	0	4	0	0	0	0	4
University of Maryland Harford Memorial Hospital	0	0	4	0	0	0	0	4
University of Maryland Medical Center	8	0	14	0	0	13	0	35
University of Maryland Medical Center Midtown Campus	0	0	8	0	0	0	0	8
University of Maryland Rehabilitation & Orthopaedic Institute	0	0	6	0	0	0	0	6
University of Maryland Shore Medical Center at Chestertown	0	0	3	0	0	0	0	3
University of Maryland Shore Medical Center at Dorchester	0	0	4	0	0	0	0	4
University of Maryland Shore Medical Center at Easton	0	0	6	0	0	0	0	6
University of Maryland St. Joseph Medical Center	0	0	15	0	0	4	0	19
University of Maryland Upper Chesapeake Medical Center	0	0	11	0	0	0	0	11
Washington Adventist Hospital	0	0	8	0	0	3	0	11
Western Maryland Regional Medical Center	0	0	14	0	0	0	0	14
MARYLAND TOTAL	10	20	502	5	8	33	4	582

Source: Maryland Health Care Commission

**Table 19. Dedicated Cesarean Section Operating Rooms and Procedure Rooms by Hospital:
Maryland Hospitals, June 1, 2014**

Jurisdiction/Region	Hospital	Dedicated Cesarean Section OR's		Procedure Rooms*	
		Inside Sterile Area	Outside Sterile Area	Inside Sterile Area	Outside Sterile Area
Allegany County	Western Maryland Regional Medical Center	2	0	0	8
Frederick County	Frederick Memorial Hospital	2	0	1	3
Garrett County	Garrett County Memorial Hospital	0	0	0	1
Washington County	Meritus Medical Center	2	0	1	2
WESTERN MARYLAND TOTAL		6	0	2	14
Montgomery County	Holy Cross Hospital of Silver Spring	4	0	2	9
	MedStar Montgomery General Hospital	2	0	1	2
	Shady Grove Adventist Hospital	0	3	3	0
	Suburban Hospital	0	0	1	2
	Washington Adventist Hospital	2	0	2	0
MONTGOMERY COUNTY TOTAL		8	3	9	13
Calvert County	Calvert Memorial Hospital	1	0	1	7
Charles County	University of Maryland Charles Regional Medical Center	0	1	2	1
Prince George's County	Doctors Community Hospital	0	0	1	4
	Fort Washington Medical Center	0	0	1	1
	Laurel Regional Hospital	1	0	1	2
	MedStar Southern Maryland Hospital Center	2	0	2	2
	Prince George's Hospital Center	2	0	1	3
	<i>Total: Prince George's County</i>	<i>6</i>	<i>1</i>	<i>9</i>	<i>20</i>
St. Mary's County	MedStar St. Mary's Hospital	1	0	0	2
SOUTHERN MARYLAND TOTAL		7	1	9	22
Anne Arundel County	Anne Arundel Medical Center	3	0	0	4
	University of MD Baltimore Washington Medical Center	2	0	3	4
	<i>Total: Anne Arundel County</i>	<i>5</i>	<i>0</i>	<i>3</i>	<i>8</i>
Baltimore City	Bon Secours Hospital	0	0	1	3
	Johns Hopkins Bayview Medical Center	2	0	0	7
	MedStar Good Samaritan Hospital of Maryland	0	0	0	5
	MedStar Harbor Hospital	1	0	4	0
	MedStar Union Memorial Hospital	0	0	4	0
	Mercy Medical Center	2	0	8	0
	Sinai Hospital of Baltimore	2	0	5	1
	St. Agnes Hospital	2	0	0	1
	The Johns Hopkins Hospital	3	0	0	23
	University of Maryland Medical Center	3	0	4	8
	University of Maryland Medical Center Midtown Campus	0	0	0	8
	Univ. of MD Rehabilitation & Orthopaedic Institute	0	0	0	1
	<i>Total: Baltimore City</i>	<i>15</i>	<i>0</i>	<i>26</i>	<i>57</i>
Baltimore County	Greater Baltimore Medical Center	3	0	3	10
	MedStar Franklin Square Hospital	3	0	5	0
	Northwest Hospital Center	0	0	0	2
	University of MD St. Joseph Medical Center	2	0	1	5
	<i>Total: Baltimore County</i>	<i>8</i>	<i>0</i>	<i>9</i>	<i>17</i>
Carroll County	Carroll Hospital Center	2	0	0	3
Harford County	University of Maryland Harford Memorial Hospital	0	0	2	7
	University of Maryland Upper Chesapeake Medical Center	2	0	2	0
	<i>Total: Harford County</i>	<i>2</i>	<i>0</i>	<i>4</i>	<i>7</i>
Howard County	Howard County General Hospital	2	0	1	3
CENTRAL MARYLAND TOTAL		34	0	43	95
Cecil County	Union Hospital of Cecil County	1	0	4	1
Dorchester County	University of MD Shore Medical Center at Dorchester	0	0	0	2
Kent County	University of MD Shore Medical Center at Chestertown**	0	0	1	0
Somerset County	Edward W. McCready Memorial Hospital	0	0	0	0
Talbot County	University of MD Shore Medical Center at Easton	1	0	0	1
Wicomico County	Peninsula Regional Medical Center	2	0	2	1
Worcester County	Atlantic General Hospital	0	0	0	3
EASTERN SHORE TOTAL		4	0	7	8
MARYLAND TOTAL		59	4	70	152

Source: Maryland Health Care Commission

*Procedure Rooms include dedicated cystoscopy and endoscopy rooms and other procedure rooms

Table 20 shows the trend in surgical services capacity at Maryland hospitals for the three-year period June 1, 2012 through June 1, 2014.

**Table 20. Trends in Number of Surgical Rooms:
Maryland Hospitals, 2012 - 2014**

Jurisdiction/ Region	Hospital	2012			2013			2014		
		Total Operating Rooms	Total Procedure Rooms	Total Cesarean Section OR's	Total Operating Rooms	Total Procedure Rooms	Total Cesarean Section OR's	Total Operating Rooms	Total Procedure Rooms	Total Cesarean Section OR's
Allegany County	Western Maryland Regional Medical Center	14	8	2	14	8	2	14	8	2
Frederick County	Frederick Memorial Hospital	11	4	2	11	4	2	11	4	2
Garrett County	Garrett County Memorial Hospital	3	1	0	3	1	0	3	1	0
Washington County	Meritus Medical Center	11	3	2	11	3	2	11	3	2
WESTERN MARYLAND TOTAL		39	16	6	39	16	6	39	16	6
Montgomery County	Holy Cross Hospital of Silver Spring	14	11	4	14	11	4	14	11	4
	MedStar Montgomery General Hospital	6	3	2	6	3	2	6	3	2
	Shady Grove Adventist Hospital	18	3	3	18	3	3	16	3	3
	Suburban Hospital	15	4	0	15	4	0	15	3	0
	Washington Adventist Hospital	11	2	2	11	2	2	11	2	2
MONTGOMERY COUNTY TOTAL		64	23	11	64	23	11	62	22	11
Calvert County	Calvert Memorial Hospital	6	8	1	6	8	1	6	8	1
Charles County	Univ. of MD Charles Regional Medical Center	4	3	1	4	3	1	4	3	1
Prince George's County	Doctors Community Hospital	11	6	0	10	5	0	10	5	0
	Fort Washington Medical Center	3	2	0	3	2	0	3	2	0
	Laurel Regional Hospital	7	3	1	7	3	1	7	3	1
	Prince George's Hospital Center	9	4	2	9	4	2	9	4	2
	MedStar Southern Maryland Hospital Center	10	4	2	10	4	2	10	3	2
St. Mary's County	MedStar St. Mary's Hospital	5	2	1	5	2	1	5	2	1
SOUTHERN MARYLAND TOTAL		55	32	8	54	31	8	54	30	8
Anne Arundel County	Anne Arundel Medical Center	26	4	3	26	3	4	26	4	3
	Univ. of MD Baltimore Washington Medical Center	16	7	2	16	7	2	16	7	2
Baltimore City	Bon Secours Hospital	5	4	0	5	4	0	5	4	0
	Johns Hopkins Bayview Medical Center	14	7	2	14	7	2	14	6	2
	MedStar Good Samaritan Hospital	11	5	0	11	5	0	11	5	0
	MedStar Harbor Hospital	9	4	1	9	4	1	9	4	1
	MedStar Union Memorial Hospital	21	5	0	21	5	0	21	5	0
	Mercy Medical Center	22	8	2	22	8	2	22	8	2
	Sinai Hospital of Baltimore	25	6	2	25	6	2	25	6	2
	St. Agnes Hospital	19	1	2	19	1	2	19	1	2
	The Johns Hopkins Hospital	60	23	3	61	23	3	61	23	3
	University of Maryland Medical Center	35	12	3	35	12	3	35	12	3
	Univ. of MD Medical Center Midtown Campus	10	8	1	10	8	0	8	8	0
	Univ. of MD Rehabilitation & Orthopaedic Institute	6	1	0	6	1	0	6	1	0
Baltimore County	Greater Baltimore Medical Center	30	13	3	30	13	3	30	13	3
	MedStar Franklin Square Hospital	16	4	3	16	4	3	16	5	3
	Northwest Hospital Center	9	3	0	9	3	0	8	2	0
	University of Maryland St. Joseph Medical Center	19	6	2	19	6	2	19	6	2
Carroll County	Carroll Hospital Center	10	3	2	10	3	2	10	3	2
Harford County	University of Maryland Harford Memorial Hospital	4	9	0	4	9	0	4	9	0
	University of MD Upper Chesapeake Medical Ctr.	11	2	2	11	2	2	11	2	2
Howard County	Howard County General Hospital	13	4	2	13	4	2	13	4	2
CENTRAL MARYLAND TOTAL		391	139	35	392	138	35	389	138	34
Cecil County	Union Hospital of Cecil County	6	6	1	6	6	1	6	5	1
Dorchester County	Univ. of MD Shore Medical Center at Dorchester	4	2	0	4	2	0	4	2	0
Kent County	Univ. of MD Shore Medical Center at Chestertown	3	1	0	3	1	0	3	1	0
Somerset County	Edward W. McCready Memorial Hospital	2	0	0	2	0	0	2	0	0
Talbot County	Univ. of MD Shore Medical Center at Easton	6	1	1	6	1	1	6	1	1
Wicomico County	Peninsula Regional Medical Center	13	3	2	13	3	2	13	3	2
Worcester County	Atlantic General Hospital	4	3	0	4	3	0	4	3	0
EASTERN SHORE TOTAL		38	16	4	38	16	4	38	15	4
MARYLAND TOTAL		587	226	64	587	224	64	582	221	63

Source: Maryland Health Care Commission

*Procedure Rooms include dedicated cystoscopy and endoscopy rooms and other procedure rooms.

Obstetric and Perinatal Services Capacity

Thirty-two of the 46 acute care hospitals in Maryland provide obstetric and perinatal services.⁴ Table 21 outlines the distribution of obstetric service capacity by region, county and hospital.

Table 21. Obstetric Service Capacity, Maryland Hospitals, June 1, 2014

Jurisdiction/ Region	Hospital	Labor Beds	Delivery Beds	Recovery Beds	Ante Partum	Post Partum Beds	Labor- Delivery Beds	Labor- Delivery- Recovery (LDR) Beds	Labor- Delivery- Recovery- PostPartum (LDRP) Beds	Cesarean Section ORs
Allegany County	Western Maryland Regional Medical Center	0	0	2	2	14	0	4	0	2
Frederick County	Frederick Memorial Hospital	0	0	0	0	27	0	9	0	2
Garrett County	Garrett County Memorial Hospital	1	0	0	2	2	0	1	3	0
Washington County	Meritus Medical Center	0	0	0	6	6	0	0	18	2
WESTERN MARYLAND TOTAL		1	0	2	10	49	0	14	21	6
Montgomery County	Holy Cross Hospital of Silver Spring	0	0	0	20	68	0	24	0	4
	MedStar Montgomery General Hospital	2	0	2	2	11	0	5	0	2
	Shady Grove Adventist Hospital	0	0	6	8	48	0	16	0	3
	Washington Adventist Hospital	0	0	0	0	25	0	10	0	2
MONTGOMERY COUNTY TOTAL		2	0	8	30	152	0	55	0	11
Calvert County	Calvert Memorial Hospital	0	0	0	1	12	0	5	0	1
Charles County	Univ. of MD Charles Regional Medical Center	0	0	0	2	12	0	4	0	1
Prince George's County	Laurel Regional Hospital	0	0	0	0	10	0	4	0	1
	Prince George's Hospital Center	0	0	0	0	38	0	11	2	2
	MedStar Southern Maryland Hospital Center	0	0	4	0	30	0	8	0	2
		0	0	4	0	78	0	23	2	5
St. Mary's County	MedStar St. Mary's Hospital	0	0	0	0	12	1	5	0	1
SOUTHERN MARYLAND TOTAL		0	0	4	3	114	1	37	2	8
Anne Arundel County	Anne Arundel Medical Center	0	0	5	4	36	0	24	0	3
	Univ. of MD Baltimore Washington Medical Ctr.	0	0	4	0	18	0	4	0	2
	<i>Total: Anne Arundel County</i>	<i>0</i>	<i>0</i>	<i>9</i>	<i>4</i>	<i>54</i>	<i>0</i>	<i>28</i>	<i>0</i>	<i>5</i>
Baltimore City	Johns Hopkins Bayview Medical Center	0	0	2	0	17	0	6	0	2
	MedStar Harbor Hospital	0	0	0	0	8	0	0	16	1
	Mercy Medical Center	0	0	3	3	29	0	13	0	2
	Sinai Hospital of Baltimore	0	0	3	0	23	0	7	0	2
	St. Agnes Hospital	0	0	0	0	0	0	12	0	2
	The Johns Hopkins Hospital	0	0	3	0	35	0	10	0	3
	University of Maryland Medical Center	5	0	3	8	14	0	7	0	3
	<i>Total: Baltimore City</i>	<i>5</i>	<i>0</i>	<i>14</i>	<i>11</i>	<i>126</i>	<i>0</i>	<i>55</i>	<i>16</i>	<i>15</i>
Baltimore County	Greater Baltimore Medical Center	0	0	0	12	48	0	17	0	3
	MedStar Franklin Square Hospital	0	0	5	0	17	0	0	20	3
	University of Maryland St. Joseph Medical Center	0	0	0	9	20	0	9	0	2
	<i>Total: Baltimore County</i>	<i>0</i>	<i>0</i>	<i>5</i>	<i>21</i>	<i>85</i>	<i>0</i>	<i>26</i>	<i>20</i>	<i>8</i>
Carroll County	Carroll Hospital Center	0	0	2	0	5	0	0	15	2
Harford County	Univ. of MD Upper Chesapeake Medical Center	0	0	2	0	9	0	0	14	2
Howard County	Howard County General Hospital	0	0	2	3	34	0	12	0	2
CENTRAL MARYLAND TOTAL		5	0	34	39	313	0	121	65	34
Cecil County	Union Hospital of Cecil County	0	0	0	0	3	0	0	8	1
Talbot County	Univ. of MD Shore Medical Center at Easton	0	0	1	3	0	0	0	10	1
Wicomico County	Peninsula Regional Medical Center	0	0	0	0	20	0	13	0	2
EASTERN SHORE TOTAL		0	0	1	3	23	0	13	18	4
MARYLAND TOTAL		8	0	49	85	651	1	240	106	63

Source: Maryland Health Care Commission

⁴ University of Maryland Shore Medical Center at Chestertown (formerly Chester River Hospital Center) closed its obstetrics service effective March 31, 2012, University of Maryland Medical Center Midtown Campus (formerly Maryland General Hospital) closed its obstetrics service effective June 30, 2013.

Newborn nursery bassinets at the 32 hospitals providing perinatal services are shown below in Table 22.

**Table 22. Newborn Nursery Bassinets:
Maryland Hospitals, FY 2015**

Jurisdiction/ Region	Hospital	Newborn Nursery	Premature Nursery	Neonatal Intensive Care	Total Bassinets
Allegany County	Western Maryland Regional Medical Center	20	0	0	20
Frederick County	Frederick Memorial Hospital	31	0	31	62
Garrett County	Garrett County Memorial Hospital	12	0	0	12
Washington County	Meritus Medical Center	41	0	0	41
WESTERN MARYLAND TOTAL		104	0	31	135
Montgomery County	Holy Cross Hospital of Silver Spring	113	0	46	159
	MedStar Montgomery General Hospital	18	0	0	18
	Shady Grove Adventist Hospital	48	0	31	79
	Washington Adventist Hospital	36	0	0	36
MONTGOMERY COUNTY TOTAL		215	0	77	292
Calvert County	Calvert Memorial Hospital	12	0	0	12
Charles County	Univ. of MD Charles Regional Medical Center	15	0	0	15
Prince George's County	Laurel Regional Hospital	9	0	0	9
	Prince George's Hospital Center	40	0	12	52
	MedStar Southern Maryland Hospital Center	16	8	0	24
	<i>Total: Prince George's County</i>	<i>92</i>	<i>8</i>	<i>12</i>	<i>112</i>
St. Mary's County	MedStar St. Mary's Hospital	16	0	0	16
SOUTHERN MARYLAND TOTAL		108	8	12	128
Anne Arundel County	Anne Arundel Medical Center	40	0	30	70
	Univ. of MD Baltimore Washington Medical Center	15	0	0	15
	<i>Total Anne Arundel County</i>	<i>55</i>	<i>0</i>	<i>30</i>	<i>85</i>
Baltimore City	Johns Hopkins Bayview Medical Center	20	0	25	45
	MedStar Harbor Hospital	44	0	0	44
	Mercy Medical Center, Inc.	40	0	26	66
	Sinai Hospital of Baltimore	35	0	21	56
	St. Agnes Healthcare	36	0	24	60
	The Johns Hopkins Hospital	25	0	45	70
	University of Maryland Medical Center	24	0	48	72
	<i>Total: Baltimore City</i>	<i>224</i>	<i>0</i>	<i>189</i>	<i>413</i>
Baltimore County	Greater Baltimore Medical Center, Inc.	60	0	30	90
	MedStar Franklin Square Hospital Center	35	0	22	57
	University of Maryland St. Joseph Medical Center	20	0	20	40
	<i>Total: Baltimore County</i>	<i>115</i>	<i>0</i>	<i>72</i>	<i>187</i>
Carroll County	Carroll Hospital Center	25	0	0	25
Harford County	University of MD Upper Chesapeake Medical Center	10	0	0	10
Howard County	Howard County General Hospital	30	0	18	48
CENTRAL MARYLAND TOTAL		459	0	309	768
Cecil County	Union Hospital of Cecil County	12	0	0	12
Talbot County	Univ. of MD Shore Medical Center at Easton	18	0	0	18
Wicomico County	Peninsula Regional Medical Center	18	0	0	18
EASTERN SHORE TOTAL		48	0	0	48
MARYLAND TOTAL		934	8	429	1,371

Source: Maryland Health Care Commission

Special Hospital Services, Comprehensive Care Facilities in the Hospital Setting, and Hospital-Based Psychiatric Inpatient Care

Special hospitals are facilities that have an organized medical staff of physicians and that include inpatient beds with medical services. The medical services include physician services and continuous registered professional nursing services, for not less than 24 hours every day, to provide diagnosis and treatment for patients who have specific medical conditions. In Maryland, special hospitals provide specialized rehabilitation, chronic care, pediatric and psychiatric services. Special hospital beds may be located on the campus of an acute general hospital. With the exception of acute care psychiatric beds, which are included as part of acute care licensed beds, special hospital beds are separately licensed from acute care beds. Special hospital beds are not included in the annual licensure process for acute care beds located in acute care general hospitals. Thus, there should be consistency between licensed bed inventory and physical bed capacity reported for a specialty hospital.

Special Hospital Medical Rehabilitation Services

Acute inpatient rehabilitation is defined, at COMAR 10.24.09, as interdisciplinary care provided to persons with disabilities who are at high risk of potential medical instability, have a potential for needing skilled nursing care of a high medical acuity, and require a mix of services, service intensity levels, and settings of the following type:

1. Regular, direct individual contact by a physiatrist or physician of equivalent training and/or experience in rehabilitation who serves as their lead provider;
2. Daily rehabilitation nursing for multiple and/or complex needs;
3. A minimum of three hours of physical or occupational therapy per day, at least five days per week, in addition to therapies or services from a psychologist, a social worker, a speech-language pathologist, and a therapeutic recreation specialist, as determined by the individual's needs; or
4. Based on their individual needs, other services provided in a health care facility that is licensed as a hospital.

There are five (5) licensed special hospitals that provide medical rehabilitation services in Maryland and ten (10) Maryland acute care hospitals have special hospital units that provide medical rehabilitation services. Table 23 profiles the types of rehabilitation programs offered at these facilities, the number of licensed beds, and the number of licensed beds that are regularly staffed. Staffed beds are defined as the number of beds regularly maintained (set up and staffed for use) for inpatients. In this table, adult patients are defined as 18 years of age and older and pediatric patients are patients under the age of 18. The program listings are medical rehabilitation services that are accredited by the Commission on Accreditation of Rehabilitation Facilities (CARF). CARF is an independent nonprofit accrediting body of human service

providers in the areas of aging services, behavioral health, child and youth services, durable medical equipment, prosthetics, orthotics and orthotic supplies, employment and community services, medical rehabilitation, and opioid treatment programs. CARF accreditation is required by the State of Maryland for licensure of rehabilitation facilities.

Table 23. Inpatient Medical Rehabilitation Services by Region and Jurisdiction, June 1, 2014

Jurisdiction/ Region	Hospital	CARF Accredited Inpatient Medical Rehabilitation Programs Offered										Licensed Beds	Staffed Beds
		Comprehensive		Brain Injury		Spinal Cord		Stroke		Amputation			
		Adult	Pediatric	Adult	Pediatric	Adult	Pediatric	Adult	Pediatric	Adult	Pediatric		
Allegany County	Western Maryland Regional Medical Center	√		√				√				13	13
Washington County	Meritus Medical Center	√	√									20	20
<i>Western Maryland Total</i>											33	33	
Montgomery County	Adventist Rehabilitation Hospital of Maryland	√		√		√		√		√		77	77
<i>Montgomery County Total</i>											77	77	
Prince George's County	Laurel Regional Hospital	√						√				28	12
<i>Southern Maryland Total</i>											28	12	
Baltimore City	Univ. of MD Rehabilitation & Orthopaedic Institute	√	√	√	√	√	√	√				82	129*
	Johns Hopkins Bayview Medical Center	√						√				9	9
	Kennedy Krieger Children's Hospital		√		√			√				31	31
	Levindale Hebrew Geriatric Center & Hospital	√		√				√				20	20
	MedStar Good Samaritan Hospital	√						√				51	51
	MedStar Union Memorial Hospital	√										18	10
	Mount Washington Pediatric Hospital		√									46	26
	Sinai Hospital of Baltimore	√		√				√				57	43
	The Johns Hopkins Hospital	√										18	18
<i>Central Maryland Total</i>											332	208	
Talbot County	Univ. of MD Shore Medical Center at Easton	√						√				20	12
Wicomico County	HealthSouth Chesapeake Rehabilitation Center	√										54	54
<i>Eastern Shore Total</i>											74	66	
MARYLAND TOTAL											544	396	

Source: Maryland Health Care Commission and Commission on Accreditation of Rehabilitation Facilities (CARF) 9/2014.

Notes: 1. Licensed Beds for Adventist Rehabilitation Hospital of Maryland at Takoma Park and Rockville locations are included in Adventist Rehabilitation Hospital of Maryland. 2. University of Maryland Rehabilitation & Orthopaedic Institute (formerly James Law rence Kernan Hospital) staffed beds include 36 chronic beds/16 dually licensed rehabilitation/chronic beds.

Other Special Hospital Services (non-psychiatric)

Pediatric

Facilities with beds licensed as Special Hospital – Pediatric are used to provide specialized inpatient services to patients less than 18 years of age. There are two special hospitals in Maryland dedicated to providing specialized pediatric services. Both hospitals provide rehabilitation and other special hospital services and are located in Baltimore City. (See Table 24).

Chronic Care

Facilities with beds licensed as Special Hospital-Chronic provide continuous and intensive medical, nursing, and ancillary services to medically-complex patients with severe illness who require close professional monitoring and observation and frequent medical interventions, either after an acute hospital phase of care or as a result of acute exacerbations of illness while residing in other settings, such as the patient's home or a nursing home (comprehensive care facility).

There are three special hospitals—chronic operating in Maryland. (See Table 24.) They range in size from 60 to 100 beds, and are currently licensed to operate 226 beds but only 150 are

reported to be regularly staffed. One chronic hospital is private, and two are state-operated. The private chronic special hospital, Levindale Hebrew & Geriatric Center & Hospital, is located in the Central Maryland region. The two state operated chronic hospitals are each located in the less densely populated Health Planning Regions of Western Maryland and the Eastern Shore. Four acute care general hospitals, three located in Baltimore City and one in Prince George's County (the Southern Maryland region) provide chronic special hospital services. The three Central Maryland Hospitals have a total of 192 licensed chronic care beds located on their campuses, with 153 reported to be staffed. The Mount Washington Pediatric Hospital at Prince George's Hospital has 15 licensed pediatric specialty beds with 12 reported to be staffed.

Chronic beds operated on an acute care hospital campus are licensed separately and are not part of the annual acute care bed licensure process.

Table 24. Licensed Special Hospitals and their Special Hospital (Non-Psychiatric and Non-Rehabilitation) Beds: Maryland, June 1, 2014

Jurisdiction/ Region	Specialty Hospitals	Pediatric		Chronic	
		Licensed	Staffed	Licensed	Staffed
Washington County	Western Maryland Center	-	-	60	30
Western Maryland Total		-	-	60	30
Baltimore City	Kennedy Krieger Children's Hospital	39	39	-	-
	Levindale Hebrew Geriatric Center & Hospital	-	-	100	100
	Mount Washington Pediatric Hospital	56	40	-	-
Central Maryland Total		95	79	100	100
Wicomico County	Deer's Head Center	-	-	66	20
Eastern Shore Total		-	-	66	20
Maryland Total		95	79	226	150

Source: Maryland Health Care Commission, Office of Health Care Quality, DHMH, Hospital Management System

**Table 25. Licensed Special Hospital (Non-Psychiatric and Non-Rehabilitation) Beds:
Located on Acute Care Hospital Campuses, Maryland, June 1, 2014**

Jurisdiction/ Region	Acute Care Hospitals	Chronic		Dual Rehabilitation/ Chronic		Pediatric Specialty	
		Licensed	Staffed	Licensed	Staffed	Licensed	Staffed
		Baltimore City/Central Maryland	Univ. of MD Rehabilitation & Orthopaedic Institute	36	36	16	16
Baltimore City/Central Maryland	Johns Hopkins Bayview Medical Center	76	57	-	-	-	-
Baltimore City/Central Maryland	Univ. of MD Medical Center Midtown Campus	80	60	-	-	-	-
Prince George's/Southern Maryland	Mt. Washington Pediatric Hosp. at Prince George's Hosp.	-	-	-	-	15	12
Prince George's/Southern Maryland	Laurel Regional Hospital	46	18	-	-	-	-
Maryland State Total		238	171	16	16	15	12

Source: Maryland Health Care Commission; Office of Health Care Quality. *Univ. of MD Rehabilitation & Orthopaedic Institute staffed chronic beds exceed licensed beds through use of dually licensed Rehabilitation/Chronic Care beds.

Comprehensive Care Facility (Nursing Home) Beds in the Hospital Setting

Comprehensive care facilities (“CCFs”) are licensed in accordance with COMAR 10.07.02. These facilities admit patients suffering from disease or disabilities, or advanced age, requiring medical service and nursing service rendered by or under the supervision of a registered nurse. The vast bulk of CCF services are provided in Maryland through freestanding (non-hospital) CCFs, commonly known as nursing homes. Only 2.8% of the state’s total CCF beds are located in general or special hospital settings. However, this type of inpatient facility service is also offered by seven (7) acute care general hospitals (Table 26) and by three facilities that combine comprehensive care facility services (Table 27) with chronic care services (Table 24). CCF beds in general hospitals are primarily used to provide short-term rehabilitative services to Medicare patients. In contrast, most of the state’s CCF beds are used to provide longer-term chronic and custodial care.

Table 26. Licensed Comprehensive Care Facility Beds at Acute Care Hospitals, Maryland, June 1, 2014

Jurisdiction/ Region	Hospital	Licensed Comprehensive Care Facility Beds	Staffed Beds
Garrett County	Garrett County Memorial Hospital	10	10
Western Maryland Total		10	10
Calvert County	Calvert Memorial Hospital	18	14
Prince George's County	MedStar Southern Maryland Hospital Center	24	24
Southern Maryland Total		42	38
	MedStar Good Samaritan Hospital	30	30
	Mercy Medical Center	29	29
Baltimore County	Greater Baltimore Medical Center	25	25
	Northwest Hospital Center	39	39
Central Maryland Total		123	123
Maryland Total - Acute Care Hospitals		175	171

Source: Maryland Health Care Commission, Office of Health Care Quality

**Table 27. Licensed Comprehensive Care Facility Beds at Special Hospitals
June 1, 2014**

Jurisdiction/ Region	Hospital	Licensed Comprehensive Care Facility Beds	Staffed Beds
Wicomico County/ Eastern Shore	Deer's Head Center	80	60
Baltimore City/ Central Maryland	Levindale Hebrew Geriatric Center & Hospital	210	210
Washington County/ Western Maryland	Western Maryland Center	63	44
Maryland State Total		353	314

Source: Maryland Health Care Commission, Office of Health Care Quality, DHMH, Hospital Management System

Psychiatric Hospital Facilities and Services

In Maryland, two types of hospital-level inpatient psychiatric services are provided; acute psychiatric services and longer-term, continuing care. Most acute inpatient psychiatric care is provided within the acute care general hospital setting at 28 acute care general hospitals. These psychiatric beds are included in the annual “dynamic” licensure process for all acute care beds

located in acute care general hospitals in which the licensed acute care bed inventory is based on recorded average daily census. Hospital-level psychiatric inpatient care outside of the acute care general hospital setting can be found in freestanding private hospitals or in state hospitals. The psychiatric beds in these two facility types are licensed as a category of “special hospital” beds under the State’s licensing statute. Freestanding private psychiatric hospitals primarily provide acute psychiatric inpatient services. State psychiatric hospitals primarily provide long-term, continuing care psychiatric inpatient services.

Table 28 provides an overview of the acute psychiatric inpatient service bed capacity and program characteristics of general acute care hospitals. In general, services for children are provided to a patient population under the age of 13 years, adolescent services are provided to patients aged 13 to 17, and adult services are provided to patients aged 18 years and older.

**Table 28. Inpatient Acute Psychiatric Services Available at General Acute Care Hospitals:
Maryland, FY 2015**

Jurisdiction/ Region		Designated FY 2015 Licensed	Acute Adult	Acute Child	Acute Adolescent	Acute Geriatric	Accept Involuntary Patients
Allegany County	Western Maryland Regional Medical Center	20	√			√	√
Frederick County	Frederick Memorial Hospital	21	√			√	√
Washington County	Meritus Medical Center	16	√			√	√
Western Maryland Total		57					
Montgomery County	MedStar Montgomery General Hospital	20	√				No
	Suburban Hospital	24	√		√	√	No
	Washington Adventist Hospital	40	√				√
Montgomery County Total		84					
Calvert County	Calvert Memorial Hospital	11	√				√
Prince George's County	Laurel Regional Hospital	14	√			√	No
	Prince George's Hospital Center	28	√			√	√
	MedStar Southern Maryland Hospital Center	25	√			√	√
St. Mary's County	MedStar St. Mary's Hospital	12	√				√
Southern Maryland Total		90					
Anne Arundel County	Univ. of MD Baltimore Washington Medical Center	14	√				√
Baltimore City	Bon Secours Hospital	32	√			√	√
	Johns Hopkins Bayview Medical Center	20	√				No
	MedStar Union Memorial Hospital	26	√				No
	Sinai Hospital of Baltimore	24	√			√	√
	The Johns Hopkins Hospital	108	√	√			√
	University of Maryland Medical Center	56	√	√		√	√
	Univ. of MD Medical Center Midtown Campus	28	√				√
Baltimore County	MedStar Franklin Square Hospital	40	√		√		√
	Northwest Hospital	23	√			√	√
	University of Maryland St. Joseph Hospital	19	√		√	√	No
Carroll County	Carroll Hospital Center	20	√		√		√
Harford County	University of Maryland Harford Memorial Hospital	27	√				√
Howard County	Howard County General Hospital	20	√			√	√
Central Maryland Total		457					
Cecil County	Union Hospital of Cecil County	8	√			√	√
Dorchester County	University of MD Shore Medical Center at Dorchester	16	√				√
Wicomico County	Peninsula Regional Medical Center	12	√				√
Eastern Shore Total		36					
Maryland State Total		724					

Source: Maryland Health Care Commission survey of psychiatric services capacity, June, 2014.

Note: Western Maryland Regional Medical Center, Washington County Hospital, and Howard County General report that adolescents (defined as 16+) may be provided services in the same section as adults. Suburban combines adolescents (13+), adults and geriatric in a combined unit. Adult and geriatric units are combined at Frederick Memorial, MedStar Montgomery General Hospital, Laurel Regional, Prince George's Hospital, Sinai, Northwest, and University of Maryland St. Joseph's Hospital.

Tables 29 and 30 profile psychiatric inpatient service capacity and inpatient program characteristics at Special Hospitals – Psychiatric. Table 29 identifies the licensed bed capacity and the number of beds reported to be regularly staffed at Maryland’s five freestanding private psychiatric hospitals. Table 30 identifies the number of licensed beds and “budgeted” beds, at Maryland’s five state-operated psychiatric hospitals. The number of “budgeted” beds provides a more accurate reflection of the bed capacity that is typically set up and staffed at these facilities than the number of licensed beds.

**Table 29. Inpatient Services Available at Private Special Hospitals - Psychiatric:
Maryland, June 1, 2014**

Jurisdiction/ Region	Special Hospital Name	Licensed Capacity	Staffed Beds	Acute Adult	Acute Child	Acute Adolescent	Acute Geriatric	Accept Involuntary Patients
Washington County	Brook Lane Health Services	65	43	√	√	√		√
Western Maryland Total		65	43					
Montgomery County	Adventist Behavioral Health Rockville	107	106	√	√	√		√
Montgomery County Total		107	106					
Baltimore County	Sheppard and Enoch Pratt Hospital	322	255	√	√	√	√	√
Howard County	Sheppard Pratt at Ellicott City	92	78	√		√		√
Central Maryland Total		414	333					
Dorchester County	Adventist Behavioral Health Eastern Shore	15	15		√	√		
Eastern Shore Total		15	15					
Maryland State Total		601	497					

Source: Maryland Health Care Commission Survey: Special Hospitals - Psychiatric, June 1, 2014

**Table 30. Inpatient Psychiatric Services Provided at State Special Hospitals - Psychiatric
Maryland, June 1, 2014**

Jurisdiction/ Region	Special Hospital Name	Licensed Psychiatric Beds	Budgeted Psychiatric Beds	Acute Adult	Acute Child	Acute Adolescent	Acute Geriatric	Acute Forensic	Accept Involuntary Patients
Allegany County	Thomas B. Finan Center	88	66					√	√
Western Maryland Total		88	66						
Baltimore County	Spring Grove Hospital Center	639	366	√		√	√	√	√
Carroll County	Springfield Hospital Center	522	235	√			√		√
Howard County	Clifton T. Perkins Hospital Center	298	238					√	√
Central Maryland Total		1,459	839						
Dorchester County	Eastern Shore Hospital Center	60	60	√			√	√	√
Eastern Shore Total		60	60						
Maryland State Total		1,607	965						

Source: Maryland Health Care Commission Survey: Special Hospitals - Psychiatric, June 1, 2014. DHMH, Hospital Management Information System. Licensed and budgeted bed totals include both acute and continuing care psychiatric beds.

Partial hospitalization programs (PHP) and intensive outpatient programs (IOP) for psychiatric patients are also provided in the acute care general hospital setting and the special hospital- psychiatric setting. PHPs and IOPs are organized day or night programs providing assessment, treatment, habilitation, or rehabilitation services for persons who do not require psychiatric inpatient care on a 24-hour basis. This may be a structured, ongoing program that the patient typically attends two to five times a week for two to five hours per day providing clinical behavioral health services. The plan of care is prescribed by and overseen by a psychiatrist. PHPs may be used as a “step-down” from inpatient care or a “step-up” from less intensive outpatient programming and are sometimes called “day hospital” programs. Services are usually provided

in a group setting for at least four hours of direct clinical care per day, with additional individual and/or family therapy and medication management as needed. IOPs are a subset of PHPs and would typically involve fewer sessions per week and/or fewer hours per daily session. IOPs may be used as a “step-down” from PHPs or a “step-up” from less intensive outpatient care outside of the institutional setting.

MHCC surveyed the availability of PHPs and IOPs at hospitals, requesting information on the maximum number of treatment “slots” available and the daily program census on four specific dates between September, 2013 and June, 2014. Tables 31 and 32 profile these programs as offered in 23 acute care general hospitals and five freestanding private psychiatric hospitals, respectively. State-operated psychiatric hospitals do not provide PHP or IOP services. [NOTE: Average daily census is the average number of patients based on patient census for four specific dates between September, 2013 and June, 2014, as reported by each hospital.]

Table 31. Partial Hospitalization and/or Intensive Outpatient Psychiatric Services at Acute Care Hospitals: Maryland, June 1, 2014

Jurisdiction/ Region	Acute Care General Hospital Name	Partial Hospitalization/ Intensive Outpatient Programs	Maximum Number of Slots Available	Average Patient Census: Partial Hospitalization / Intensive
Allegany County	Western Maryland Regional Medical Center	√	20	8
Frederick County	Frederick Memorial Hospital	√	15	10
Washington County	Meritus Medical Center	√	14	2
Western Maryland Total			49	
Montgomery County	MedStar Montgomery General Hospital	√	25	22
	Suburban Hospital	√	20	21
	Washington Adventist Hospital	√	45	13
Montgomery County Total			90	
Calvert County	Calvert Memorial Hospital	√	30	11
Prince George's County	Laurel Regional Hospital	√	14	9
	MedStar Southern Maryland Hospital Center	√	20	6
	Prince George's Hospital Center	√	12	5
St. Mary's County	MedStar St. Mary's Hospital	√	12	7
Southern Maryland Total			88	
Anne Arundel County	Univ. of MD Baltimore Washington Medical Ctr.	√	16	7
Baltimore City	Bon Secours Hospital	√	16	4
	Johns Hopkins Bayview Medical Center	√	100	65
	MedStar Union Memorial Hospital	√	20	15
	Sinai Hospital of Baltimore	√	20	12
	University of MD Medical Ctr. Midtown Campus	–	–	–
	The Johns Hopkins Hospital	√	32	12
Baltimore County	University of Maryland Medical Center	√	24	6
	MedStar Franklin Square Hospital	–	–	–
	Northwest Hospital	–	–	–
Baltimore County	University of Maryland St. Joseph Hospital	√	25	7
Carroll County	Carroll Hospital Center	√	35	9
Harford County	University of Maryland Harford Memorial Hospital	√	10	5
Howard County	Howard County General Hospital	–	–	–
Central Maryland Total			298	
Cecil County	Union Hospital of Cecil County	–	–	–
Dorchester County	Univ. of MD Shore Mwdical Center at Dorchester	√	16	6
Wicomico County	Peninsula Regional Medical Center	–	–	–
Eastern Shore Total			16	6
Maryland State Total			541	

Source: Maryland Health Care Commission survey of psychiatric services capacity, June, 2014.

**Table 32. Partial Hospitalization and/or Intensive Outpatient Services at Private Special Hospitals -
Psychiatric: Maryland, June 1, 2014**

Jurisdiction/Region	Special Hospital - Psychiatric	Partial Hospitalization/ Intensive Outpatient Programs	Maximum Slots Available: Partial Hospitalization/ Intensive Outpatient Programs	Average Daily Census
Washington County	Brook Lane Health Services	√	35	26
	<i>Western Maryland Total</i>		35	
Montgomery County	Adventist Behavioral Health - Rockville	√	40	28
	<i>Montgomery County Total</i>		40	
Baltimore County	Sheppard Pratt Hospital	√	150	96
Howard County	Sheppard Pratt at Ellicott City	√	20	16
	<i>Central Maryland Total</i>		170	
Dorchester County	Adventist Behavioral Health Eastern Shore	√	10	2
	<i>Eastern Shore Total</i>		10	
	<i>Maryland State Total</i>		255	

Source: Maryland Health Care Commission survey of psychiatric services capacity, June, 2014

The following tables profile psychiatric hospital bed capacity for the three types of hospital settings, across several bed capacity dimensions, including licensed beds, physical bed capacity, and staffed beds. They also provide recent patient day and bed occupancy rate information. In the case of the State psychiatric hospitals, total inpatient days are reported for FY 2013.

Table 33. Inventory and Utilization of Psychiatric Beds at General Acute Care Hospitals

Jurisdiction/Region	Acute Care General Hospitals	Licensed Beds Designated Psychiatric FY 2015	Beds, June 1, 2014		Patient Days CY 2013	Staffed Bed Occupancy CY2013
			Physical Bed Capacity	Staffed Beds		
Allegany County	Western Maryland Regional Medical Center	20	19	17	5,061	82%
Frederick County	Frederick Memorial Hospital	21	21	21	7,103	93%
Washington County	Meritus Medical Center	16	40	39	4,208	30%
Western Maryland Total		57	80	77	16,372	58%
Montgomery County	MedStar Montgomery General Hospital	20	32	19	4,088	59%
	Suburban Hospital	24	24	24	6,548	75%
	Washington Adventist Hospital	40	40	39	8,890	62%
Montgomery County Total		84	96	82	19,526	65%
Calvert County	Calvert Memorial Hospital	11	17	11	3,146	78%
Prince George's County	Laurel Regional Hospital	14	21	9	3,445	105%
	MedStar Southern Maryland Hospital Center	25	25	25	4,330	47%
	Prince George's Hospital Center	28	34	28	7,464	73%
St. Mary's County	MedStar St. Mary's Hospital	12	12	12	2,350	54%
Southern Maryland Total		90	109	85	20,735	67%
Anne Arundel County	University of Maryland Baltimore Washington Medical Center	14	14	14	5,228	102%
Baltimore City	Bon Secours Hospital	32	32	25	8,100	89%
	Johns Hopkins Bayview Medical Center	20	20	20	6,318	87%
	MedStar Union Memorial Hospital	26	26	26	7,909	83%
	Sinai Hospital of Baltimore	24	24	24	8,896	102%
	The Johns Hopkins Hospital	108	108	100	31,941	88%
	University of Maryland Medical Center	56	54	54	14,991	76%
	University of Maryland Medical Center Midtown Campus	28	28	28	8,980	88%
Baltimore County	MedStar Franklin Square Hospital	40	40	40	8,436	58%
	Northwest Hospital	23	23	23	7,442	89%
	University of Maryland St. Joseph Medical Center	19	19	19	5,558	80%
Carroll County	Carroll Hospital Center	20	20	16	4,561	78%
Harford County	University of Maryland Harford Memorial Hospital	27	27	27	6,912	70%
Howard County	Howard County General Hospital	20	20	20	5,719	78%
Central Maryland Total		457	455	436	130,991	82%
Cecil County	Union Hospital of Cecil County	8	15	7	2,300	90%
Dorchester County	University of Maryland Shore Medical Center at Dorchester	16	24	15	3,423	63%
Wicomico County	Peninsula Regional Medical Center	12	12	12	3,880	89%
Eastern Shore Total		36	51	34	9,603	77%
Maryland State Total		724	791	714	197,227	76%

Sources: Licensed beds designated as psychiatric, Maryland Health Care Commission and Office of Health Care Quality, Acute General Hospital Licensed Bed Designation, FY 2015. Physical capacity and staffed beds, MHCC Supplemental Survey: Psychiatric Services Capacity, June 1, 2014. Patient Days, Health Services Cost Review Commission, Discharge Abstract, CY 2013. Staffed Occupancy is calculated as (patient days)/(staffed beds*365)

Table 34. Inventory and Utilization of Acute Psychiatric Beds at Private Psychiatric Hospitals: Maryland, 2014

Jurisdiction/Region	Private Special Hospital - Psychiatric	Beds, June 1, 2013			Patient Days CY2013	Staffed Bed Occupancy CY2013
		Licensed Beds	Physical Bed Capacity	Staffed Beds		
Washington County/ Western Maryland	Brook Lane Health Services	65	43	43	13,292	85%
Montgomery County/ Montgomery	Adventist Behavioral Health - Rockville	107	106	106	33,218	75%
Dorchester County/ Eastern Shore	Adventist Behavioral Health - Eastern Shore	15	15	15		
Baltimore County/ Central Maryland	Sheppard Pratt Hospital	322	322	255	100,621	83%
Howard County/ Central Maryland	Sheppard Pratt at Ellicott City	92	92	78		

Sources: Licensed Beds, Office of Health Care Quality; Physical Capacity and Staffed Beds, Maryland Health Care Commission June, 2014 Survey; Psychiatric Service Capacity; Patient Days, Health Services Cost Review Commission, Discharge Database, CY2013.

Staffed Occupancy is calculated using the formula, (patient days)/(staffed beds*365).

Note: Staffed beds may fluctuate/change during the course of the surveyed year

Sheppard Pratt and Adventist Behavioral Health combine their sites' patient data when reporting to HSCRC.

Table 35. Inventory and Utilization of Psychiatric Beds at State Psychiatric Hospitals: Maryland, 2014

Jurisdiction/Region	State Psychiatric Special Hospitals	Beds, June 1, 2013						Patient Days FY 20132	Staffed Bed Occupancy FY 2013
		Licensed Beds	State Budgeted Beds	Capacity		Staffed Beds			
				Acute Care	Continuing Care	Acute Care	Continuing Care		
Allegany County	Thomas B. Finan Center	88	66	66	22	44	22	24,255	101%
Western Maryland Total		88	66	66	22	44	22	24,453	101%
Baltimore County	Spring Grove Hospital Center	639	366	148	335	109	266	129,099	94%
Carroll County	Springfield Hospital Center	522	235	98	151	98	151	82,269	91%
Howard County	Clifton T. Perkins Hospital Center	298	238	19	251	19	221	88,692	101%
Central Maryland Total		1,459	839	265	737	226	638	300,060	95%
Dorchester County	Eastern Shore Hospital Center	60	60	64	0	60	0	20,093	92%
Eastern Shore Total		60	60	64	0	60	0	20,093	92%
Maryland State Total		1,607	965	395	759	330	660	344,606	95%

Source: Staffed beds and physical bed capacity: Maryland Health Care Commission Survey: Special Hospitals - Psychiatric, June 1, 2014; Licensed bed inventory, Office of Health Care Quality, DHMH; budgeted beds, patient days, Hospital Management Information System.

Staffed bed occupancy is calculated using the following formula [patient days ÷ 365] ÷ staffed bed inventory.

Note: The number of staffed beds may fluctuate during the course of the surveyed year.



4160 Patterson Avenue
Baltimore, Maryland 21215
Telephone: (410) 764-3460
FAX: (410) 358-1236
Toll Free: 1 (877) 245-1762
TDD: 1 (800) 735-2258
<http://mhcc.maryland.gov>