

Annual Report on Selected Maryland Acute Care and Special Hospital Services

Fiscal Year **2014**

Effective July 1, 2013



Annual Report on Selected Maryland Acute Care and Special Hospital Services

Fiscal Year **2014**



Center for Hospital Services

Table of Contents

	Page
Background.....	1
Acute Care Hospital Bed Capacity	1
Licensed Acute Care Hospital Beds in Maryland: FY 2014	2
Demand for Hospital Beds in Maryland Compared with Regional and National Trends.....	8
Critical Care Beds.....	12
Monitored Beds.....	14
Hospital System Affiliation.....	16
Total Available Acute Care Bed Capacity.....	19
Observation Services.....	21
Emergency Department/Center Treatment Capacity	23
Hospital Surgical Services Capacity.....	27
Obstetric and Perinatal Services Capacity	31
Special Hospital Services, Comprehensive Care Facilities in the Hospital Setting, and Hospital-Based Psychiatric Care	33
Special Hospital Medical Rehabilitation Services	33
Other Special Hospital Services (non-psychiatric).....	34
Comprehensive Care Beds in the Hospital Setting.....	36
Psychiatric Hospital Facilities and Services.....	37

Tables and Charts

Tables:

1	Licensed Acute Care Beds by Hospital and Service: Maryland, FY 2014	3
2	Trend in Licensed Acute Care Beds by Hospital: Maryland, FY 2005 - 2014	4

3	Percent Change in Total Licensed Acute Care Hospital Beds, by Maryland Region: FY 2005 – 2014.....	5
4	Change in Number of Total Licensed Acute Care Beds by Region: Maryland Hospitals, FY 2013 - 2014.....	7
5	Allocation of Licensed Acute Care Beds by Service: Maryland Hospitals, FY 2005 - 2014	7
6	Allocation of Licensed Acute Care Beds by Service (Percentage), Maryland Hospitals, FY 2005 – FY2014	8
7	Proportion of Total Population Aged 65 and Older, South Atlantic Census Region States, 2011.....	9
8	Critical Care Bed Inventory: Maryland Hospitals, FY 2014.....	13
9	Licensed Acute Care Beds with Monitoring Capability: Maryland Hospitals, FY 2014.....	15
10	Trend in Licensed Acute Care Beds by System Affiliation: Maryland Hospitals, FY 2005 – 2014.....	17
11	Multihospital Systems and Hospitals and Beds by System Status in Maryland, 2007 – 2014.....	18
12	Total Available Physical Acute Care Bed Capacity Reported by Maryland Hospitals, June 1, 2013	20
13	Maryland Acute Care General Hospital Observation (OBV) Services, June 1, 2013.....	22
14	Summary – Acute Care Hospital Observation Beds, June 1, 2012	23
15	Change in Emergency Department/Freestanding Medical Facility Treatment Capacity: Maryland, 2012 – 2013.....	24
16	Inventory of Emergency Department/Freestanding Medical Facility Treatment Capacity: Maryland Hospitals: June 1, 2013	25
17	Trends in Emergency Department/Freestanding Medical Facility Treatment Capacity: Maryland Hospitals, June 1, 2007 – June 1, 2013.....	26
18	Surgical Services Capacity by Hospital and Room Use: Maryland Hospitals, June 1, 2013.....	28
19	Dedicated Cesarean Section Operating Rooms and Procedure Rooms by Hospital: Maryland Hospitals, June 1, 2013.....	29
20	Trends in Number of Surgical Rooms: Maryland Hospitals, 2011 – 2013.....	30

21	Obstetric Service Capacity: Maryland Hospitals, June 1, 2013.....	31
22	Newborn Nursery Bassinets, Maryland Hospitals, FY 2014.....	32
23	Inpatient Medical Rehabilitation Facilities and Services by Region and Jurisdiction, June 1, 2013.....	34
24	Licensed Special Hospital and their Special Hospital (Non-Psychiatric and Non- Rehabilitation) Beds, Maryland, June 1, 2013.....	35
25	Licensed Special Hospitals (Non-Psychiatric and Non-Rehabilitation) Beds, Located on Acute Care Hospital Campuses: Maryland, June 1, 2013.....	35
26	Licensed Comprehensive Care Beds at Acute Care Hospitals: Maryland, June 1, 2013.....	36
27	Licensed Comprehensive Care Beds at Special Hospitals: June 1, 2013.....	37
28	Inpatient Acute Psychiatric Services Available at General Acute Care Hospitals, Maryland, FY 2013.....	38
29	Inpatient Psychiatric Services Available at Private Special Hospitals – Psychiatric, Maryland, June 1, 2013.....	39
30	Inpatient Psychiatric Services Provided at State Special Hospitals – Psychiatric, Maryland, June 1, 2013.....	39
31	Partial Hospitalization and/or Intensive Outpatient Psychiatric Services at Acute Care Hospitals, June 1, 2013.....	40
32	Partial Hospitalization and/or Intensive Outpatient Services at Private Special Hospitals, Psychiatric: June 1, 2013.....	41
33	Inventory and Utilization of Psychiatric Beds at General Acute Care Hospitals, Maryland, 2013.....	42
34	Inventory and Utilization of Psychiatric Beds at Private Psychiatric Hospitals: Maryland, 2013.....	43
35	Inventory and Utilization of Psychiatric Beds at State Psychiatric Hospitals: Maryland, 2013.....	43

Charts:

1	Year to Year Change in Total Licensed Acute Care Beds: Maryland Hospitals, FY 2005 – FY 2014.....	5
2	Total Licensed Acute Care Beds: Maryland Hospitals, FY 2005 – 2014.....	6
3	Trend in Average Daily Acute Care Patient Census: Maryland Hospitals, CY 1980 – 2012.....	6

4 Hospital Admissions per 1,000 Population, All Hospital Unit Admissions (Excludes NH Unit Admissions) South Atlantic Census Region States 2007 – 20119

5 Hospital Average Length of Stay, All Hospital Unit Admissions (Excludes NH Unit Admissions) South Atlantic Census Region States 2007 – 2011 10

6 Hospital Admissions per 1,000 Population, All Hospital Unit Admissions (Excludes NH Unit Admissions) U.S. and Maryland, 1995 – 2011 11

7 Hospital Average Length of Stay, All Hospital Unit Admissions (Excludes NH Unit Admissions) U.S. and Maryland, 1995 – 2011 11

8 Comparison of Multihospital Systems and Non-Multihospital System Hospitals, Maryland, FY 2005 - FY2011 18

9 Change in Number of Emergency Treatment Spaces by Type of Space: Maryland, 2006 – 201327

Annual Report on Selected Maryland Acute Care Hospital Services: Fiscal Year 2014

Background

An Annual Report profiling changes in licensed acute care hospital beds in Maryland's acute care hospitals was initiated in 2001 to document and track changes in the licensed bed inventory following implementation of a standardized annual licensure renewal process based on inpatient census. The process involves notifying hospitals prior to the beginning of each fiscal year concerning the calculated total number of licensed acute care beds for the coming fiscal year. In turn, the hospitals identify the allocation of the total licensed acute care beds across four service categories: medical/surgical/gynecological/addictions ("MSGA"); obstetric, pediatric, and acute psychiatric services. Over time, additional information on hospital service capacity, covering emergency department services, surgical services, obstetric and perinatal services, observation and non-acute care bed capacity have been added to the survey undertaken to update acute care bed licensure.

Acute Care Hospital Bed Capacity

Licensed bed capacity for acute care hospitals in the State of Maryland is dynamic, calculated annually based on average daily acute care inpatient census. The Maryland Health Care Commission, in conjunction with the Health Services Cost Review Commission, calculates the average daily census of acute care patients for each hospital for the 12-month period ending with the first quarter of each year and total licensed acute care bed capacity is established for the next fiscal year at 140% of the hospital's average daily census. This licensure approach reflects an assumption that an average annual occupancy rate of approximately 71.4% for acute care hospital beds is an appropriate bench-mark for determining the maximum number of beds an acute care hospital needs to operate.

The initial implementation of this licensure process in 2001 resulted in a statewide reduction in licensed acute care hospital beds of 2,773 beds. Total licensed acute care bed capacity increased each year after the initial reduction in 2001 until fiscal year 2010. Statewide, Between FY 2001 and FY 2010, the total number of licensed acute care hospital beds increased 13.9% (from 9,555 to 10,880 beds), in direct correspondence to the increase in average daily acute care patient census. Licensed acute care bed capacity began to decline in response to falling patient census after FY 2010 and has fallen in every year since. Between FY 2010 and FY 2014, licensed acute care bed capacity has fallen from 10,880 to 10,177 beds, a decline of 6.5% over that four year period.

Non-acute care beds licensed in acute care hospitals are excluded from this annual licensure adjustment process as are special hospitals. Beginning in 2008 the Commission surveyed special hospitals to include inventories of “special hospital” beds (rehabilitation, chronic care, and long term psychiatric care) in this report, including special hospital beds located on or off general acute care hospital campuses.

NOTES

In 2013 two acute care general hospitals joined Health Systems. MedStar acquired one additional hospital during this time, and the University of Maryland Medical System acquired one acute care general hospital. Additionally, effective July 1, 2014, the University of Maryland Medical System changed the names of previously acquired hospitals. Tables included in the following report utilize the “new” names of the acute care general hospitals. The previous hospital names along with the newly acquired name of each hospital are listed below by Health System and Region/County.

MedStar Health

Region/County	Previous Name	Current Name
Southern Maryland		
Prince George's County	Southern Maryland Hospital Center	MedStar Southern Maryland Hospital Center

University of Maryland Medical System

Southern Maryland		
Charles County	Civista Medical Center	University of Maryland Charles Regional Medical Center
Central Maryland		
Anne Arundel County	Baltimore Washington Medical Center	University of Maryland Baltimore Washington Medical Center
Baltimore City	James Lawrence Kernan Hospital	University of Maryland Rehabilitation & Orthopaedic Institute
Baltimore City	Maryland General Hospital	University of Maryland Medical Center Midtown Campus
Baltimore County	St. Joseph Medical Center	University of Maryland St. Joseph Medical Center
Eastern Shore		
Dorchester County	Dorchester General Hospital	University of Maryland Shore Medical Center at Dorchester
Kent County	Chester River Hospital Center	University of Maryland Shore Medical Center at Chestertown
Talbot County	Memorial Hospital at Easton	University of Maryland Shore Medical Center at Easton

Licensed Acute Care Hospital Beds in Maryland: FY 2014

Table 1 shows the licensed acute care bed capacity for each acute care hospital, by service, effective July 1, 2014. The calculation of licensed beds for FY 2014, based on each hospital’s average daily census from April 1, 2012 through March 31, 2013, results in a total of 10,177 licensed acute care hospital beds in Maryland. Table 2 shows a ten-year trend in licensed acute care beds by hospital. Table 3 shows the percent change by region.

Table 1. Licensed Acute Care Beds by Hospital and Service: Maryland, FY 2014

Jurisdiction/ Region	Hospital	Acute Care Services				
		MSGA	Obstetric	Pediatric	Psychiatric	Total
Allegany County	Western Maryland Regional Medical Center	167	10	4	19	200
Frederick County	Frederick Memorial Hospital	239	27	10	21	297
Garrett County	Garrett County Memorial Hospital	22	3	1	0	26
Washington County	Meritus Medical Center	197	17	5	18	237
WESTERN MARYLAND TOTAL		625	57	20	58	760
Montgomery County	Holy Cross Hospital of Silver Spring	283	88	26	0	397
	MedStar Montgomery Medical Center	94	11	2	25	132
	Shady Grove Adventist Hospital	231	56	25	0	312
	Suburban Hospital	206	0	6	24	236
	Washington Adventist Hospital	191	21	0	40	252
MONTGOMERY COUNTY TOTAL		1,005	176	59	89	1,329
Calvert County	Calvert Memorial Hospital	72	8	1	11	92
Charles County	University of Maryland Charles Regional Medical Center	105	12	4	0	121
Prince George's County	Doctors Community Hospital	198	0	0	0	198
	Fort Washington Medical Center	33	0	0	0	33
	Laurel Regional Hospital	54	10	0	14	78
	MedStar Southern Maryland Hospital Center	168	30	4	25	227
	Prince George's Hospital Center	142	36	8	28	214
	<i>Total: Prince George's County</i>	<i>595</i>	<i>76</i>	<i>12</i>	<i>67</i>	<i>750</i>
St. Mary's County	MedStar St. Mary's Hospital	59	12	6	12	89
SOUTHERN MARYLAND TOTAL		831	108	23	90	1,052
Anne Arundel County	Anne Arundel Medical Center	317	60	8	0	385
	University of Maryland Baltimore Washington Medical Center	277	18	10	14	319
	<i>Total: Anne Arundel County</i>	<i>594</i>	<i>78</i>	<i>18</i>	<i>14</i>	<i>704</i>
Baltimore City	Bon Secours Hospital	75	0	0	32	107
	Johns Hopkins Bayview Medical Center	308	17	10	20	355
	MedStar Good Samaritan Hospital	206	0	0	0	206
	MedStar Harbor Hospital	106	25	5	0	136
	MedStar Union Memorial Hospital	193	0	2	26	221
	Mercy Medical Center	188	32	5	0	225
	Sinai Hospital of Baltimore	342	23	32	24	421
	St. Agnes Hospital	244	23	9	0	276
	The Johns Hopkins Hospital	777	35	140	108	1,060
	University of Maryland Medical Center	672	30	58	56	816
	University of Maryland Medical Center Midtown Campus	100	0	0	28	128
	University of Maryland Rehabilitation and Orthopaedics Institute	10	0	0	0	10
	<i>Total: Baltimore City</i>	<i>3,221</i>	<i>185</i>	<i>261</i>	<i>294</i>	<i>3,961</i>
Baltimore County	Greater Baltimore Medical Center	187	60	8	0	255
	MedStar Franklin Square Hospital	277	37	9	24	347
	Northwest Hospital Center	220	0	0	23	243
	University of Maryland St. Joseph Medical Center	189	20	4	19	232
	<i>Total: Baltimore County</i>	<i>873</i>	<i>117</i>	<i>21</i>	<i>66</i>	<i>1,077</i>
Carroll County	Carroll Hospital Center	104	20	7	20	151
Harford County	Harford Memorial Hospital	61	0	0	28	89
	Upper Chesapeake Medical Center	171	11	3	0	185
	<i>Total: Harford County</i>	<i>232</i>	<i>11</i>	<i>3</i>	<i>28</i>	<i>274</i>
Howard County	Howard County General Hospital	191	34	6	22	253
CENTRAL MARYLAND TOTAL		5,215	445	316	444	6,420
Cecil County	Union Hospital of Cecil County	71	4	3	7	85
Dorchester County	University of Maryland Shore Medical Center at Dorchester	25	0	0	16	41
Kent County	University of Maryland Shore Medical Center at Chestertown	40	0	1	0	41
Somerset County	Edward W. McCready Memorial Hospital	4	0	0	0	4
Talbot County	University of Maryland Shore Medical Center at Easton	87	17	8	0	112
Wicomico County	Peninsula Regional Medical Center	250	20	8	10	288
Worcester County	Atlantic General Hospital	45	0	0	0	45
EASTERN SHORE TOTAL		522	41	20	33	616
MARYLAND TOTAL		8,198	827	438	714	10,177

Source: Maryland Health Care Commission, Acute Care Hospital Inventory (ACHI) FY2014.

Table 2. Trend in Licensed Acute Care Beds by Hospital: Maryland, FY 2005 - 2014*

Jurisdiction/Region	Hospital	2005	2006	2007	2008	2009	2010	2011	2012	2013	2014
Allegany County	Braddock Hospital	147	144	148	155	154	-	-	-	-	-
	Memorial Hosp & Med Ctr. of Cumberland	129	124	120	109	117	-	-	-	-	-
	Western Maryland Regional Medical Center	-	-	-	-	-	262	252	250	234	200
	<i>Total: Allegany County</i>	276	268	268	264	271	262	252	250	234	200
Frederick County	Frederick Memorial Hospital	231	232	227	246	269	274	276	309	298	297
Garrett County	Garrett County Memorial Hospital	32	33	31	34	36	33	31	30	29	26
Washington County	Meritus Medical Center	243	246	243	264	258	260	258	252	245	237
WESTERN MARYLAND TOTAL		782	779	769	808	834	829	817	841	806	760
Montgomery County	Holy Cross Hospital of Silver Spring	352	365	379	404	408	404	402	409	396	397
	MedStar Montgomery Medical Center	156	144	144	149	165	170	159	158	138	132
	Shady Grove Adventist Hospital	281	269	268	275	293	320	336	339	331	312
	Suburban Hospital	231	228	212	228	238	239	222	233	229	236
	Washington Adventist Hospital	318	292	285	294	292	288	281	271	252	252
MONTGOMERY COUNTY TOTAL		1,338	1,298	1,288	1,350	1,396	1,421	1,400	1,410	1,346	1,329
Calvert County	Calvert Memorial Hospital	102	105	107	105	106	98	98	95	95	92
Charles County	Civista Medical Center	116	117	109	121	129	120	120	124	110	121
Prince George's County	Doctors Community Hospital	194	181	186	192	195	190	195	219	207	198
	Fort Washington Medical Center	43	41	42	42	43	43	42	41	31	33
	Laurel Regional Hospital	116	108	96	95	97	95	87	83	77	78
	Prince George's Hospital Center	283	269	268	264	246	254	244	242	224	214
	MedStar Southern Maryland Hospital Center	252	246	257	258	255	246	235	238	239	227
<i>Total: Prince George's County</i>	888	845	849	851	836	828	803	823	778	750	
St. Mary's County	MedStar St. Mary's Hospital	84	88	105	108	108	103	96	90	90	89
SOUTHERN MARYLAND TOTAL		1,190	1,155	1,170	1,185	1,179	1,149	1,117	1,132	1,073	1,052
Anne Arundel County	Anne Arundel Medical Center	265	265	265	278	301	316	324	336	380	385
	Univ. of MD Baltimore Washington Medical Center	272	278	286	293	298	311	321	308	307	319
	<i>Total: Anne Arundel County</i>	537	543	551	571	599	627	645	644	687	704
Baltimore City	Bon Secours Hospital	148	142	141	151	125	126	141	127	115	107
	Johns Hopkins Bayview Medical Center	310	316	323	333	345	346	348	348	355	355
	MedStar Good Samaritan Hospital	252	279	265	265	245	236	235	222	224	206
	MedStar Harbor Hospital	177	182	186	203	215	221	193	179	160	136
	MedStar Union Memorial Hospital	283	287	279	283	292	295	271	231	236	221
	Mercy Medical Center	223	228	224	235	243	244	244	226	233	225
	Sinai Hospital of Baltimore	393	392	393	398	415	413	424	416	426	421
	St. Agnes Hospital	300	308	323	314	307	318	314	296	287	276
	The Johns Hopkins Hospital	945	956	958	982	979	990	994	992	1,000	1,060
	University of Maryland Medical Center	650	665	669	689	705	731	757	779	800	816
	Univ. of MD Medical Center Midtown Campus	214	196	205	209	191	180	167	164	155	128
Univ. of MD Rehabilitation & Orthopaedic Institute	11	10	11	10	11	10	10	9	9	10	
<i>Total: Baltimore City</i>	3,906	3,961	3,977	4,072	4,073	4,110	3,921	3,989	4,000	3,961	
Baltimore County	Greater Baltimore Medical Center	300	287	292	298	310	300	285	281	270	255
	MedStar Franklin Square Hospital	335	343	357	362	380	371	376	347	355	347
	Northwest Hospital Center	204	209	214	213	218	221	215	221	225	243
	Univ. of MD St. Joseph Medical Center	333	342	370	364	354	345	300	263	247	232
	<i>Total: Baltimore County</i>	1,172	1,181	1,233	1,237	1,262	1,237	891	1,112	1,097	1,077
Carroll County	Carroll Hospital Center	194	199	210	216	218	213	195	189	158	151
Harford County	Harford Memorial Hospital	85	91	94	91	104	105	101	97	89	89
	Upper Chesapeake Medical Center	152	149	167	168	182	196	186	175	181	185
	<i>Total: Harford County</i>	237	240	261	259	286	301	287	272	270	274
Howard County	Howard County General Hospital	212	204	208	219	209	227	238	249	249	253
CENTRAL MARYLAND TOTAL		6,258	6,328	6,440	6,574	6,647	6,715	6,177	6,455	6,461	6,420
Cecil County	Union Hospital of Cecil County	116	111	99	105	116	113	113	106	92	85
Dorchester County	Univ. of MD Shore Medical Center at Dorchester	60	58	53	49	54	54	53	52	46	41
Kent County	Univ. of MD Shore Medical Center at Chestertown	56	57	58	62	57	53	47	46	42	41
Somerset County	Edward W. McCready Memorial Hospital	9	8	9	8	9	8	8	9	5	4
Talbot County	Univ. of MD Shore Medical Center at Easton	135	129	120	123	120	125	120	116	112	112
Wicomico County	Peninsula Regional Medical Center	333	360	371	366	362	358	362	363	317	288
Worcester County	Atlantic General Hospital	44	40	49	51	53	55	53	53	48	45
EASTERN SHORE TOTAL		753	763	759	764	771	766	756	745	662	616
MARYLAND TOTAL		10,321	10,323	10,426	10,681	10,827	10,880	10,729	10,583	10,348	10,177

Source: Maryland Health Care Commission.

*Prior to FY 2001, the number of licensed acute care hospital beds was based on physical bed capacity. Statewide, there were 12,328 licensed acute care beds in FY2000. In FY 2001, the first year that state law required licensure of acute care hospital beds based on actual patient census, the total number of licensed acute care hospital beds in Maryland declined to 9,562.

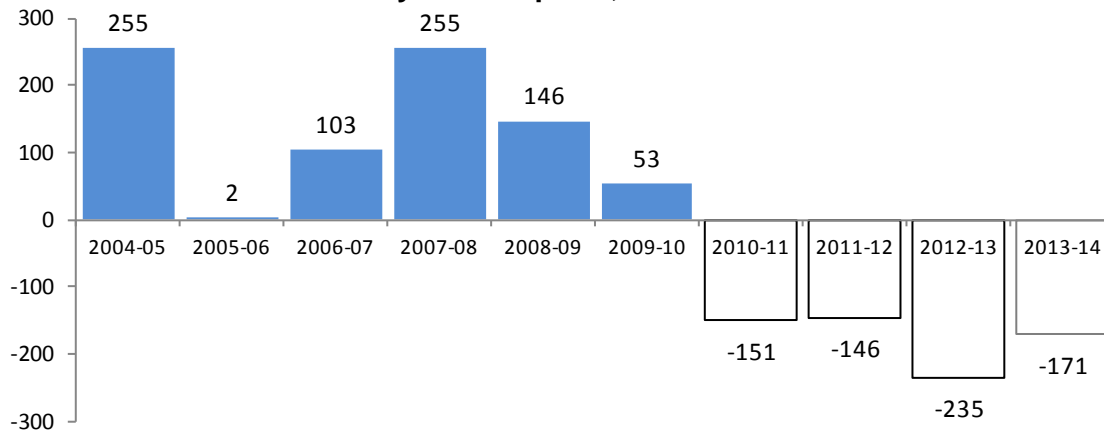
**Table 3. Percent Change in Total Licensed Acute Care Hospital Beds,
by Maryland Region: Fiscal Years 2005 - 2014**

Region	2005	2006	2007	2008	2009	2010	2011	2012	2013	2014	Average Annual Change 2005 - 2014
Western Maryland	3.4%	-0.4%	-1.3%	5.1%	3.2%	-0.6%	-1.4%	2.9%	-4.2%	-5.7%	0.1%
Montgomery County	2.5%	-3.0%	-0.8%	4.8%	3.4%	1.8%	-1.5%	0.7%	-4.5%	-1.3%	0.2%
Southern Maryland	3.2%	-2.9%	1.3%	1.3%	-0.5%	-2.5%	-2.8%	1.3%	-5.2%	-2.0%	-0.9%
Central Maryland	2.1%	1.1%	1.8%	2.1%	1.1%	1.0%	-1.1%	2.8%	0.1%	-0.6%	1.0%
Eastern Shore	4.1%	1.3%	-0.5%	0.7%	0.9%	-0.6%	-1.3%	1.5%	-11.1%	-6.9%	-1.2%
Maryland Total	2.5%	0.0%	1.0%	2.4%	1.4%	0.5%	-1.4%	-1.4%	-2.2%	-1.7%	0.1%

Source: Maryland Health Care Commission

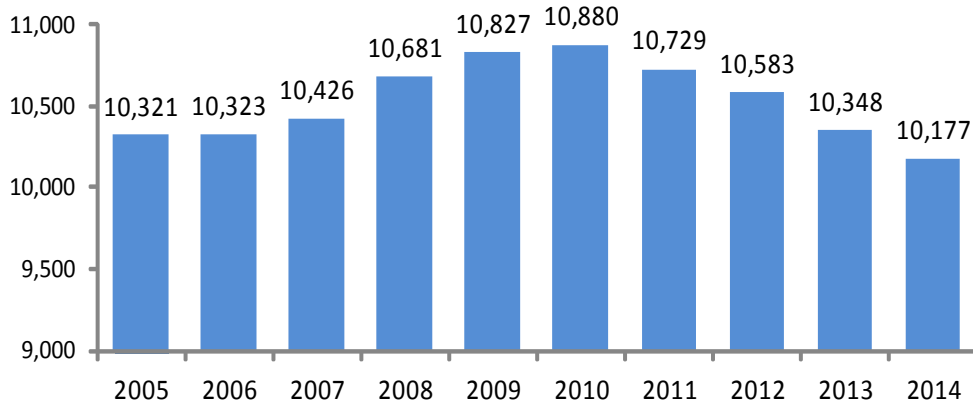
Chart 1 displays the annual net change in licensed acute care beds over the last ten years, while Chart 2 shows the total number of licensed beds over the same time period.

**Chart 1. Year to Year Change in Total Licensed Acute Care Beds:
Maryland Hospitals, FY 2005 - 2014**



Source: Maryland Health Care Commission

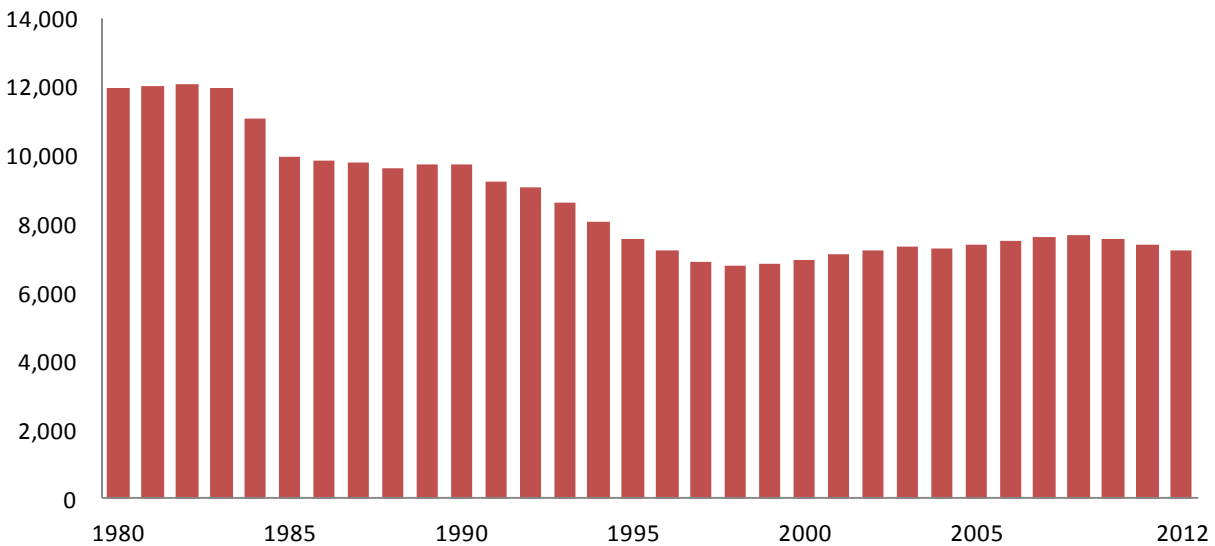
**Chart 2. Total Licensed Acute Care Beds:
Maryland Hospitals, FY 2005 - 2014**



Source: Maryland Health Care Commission

While the average daily census of acute care patients began to gradually trend upward in the late 1990's, hospital utilization in Maryland never returned to historic peaks. During calendar year 2009 average daily census saw the first decline since dynamic hospital bed licensure went into effect in 2001. The average daily census declined again in calendar year 2010. Chart 3 shows the trend of declining acute care census from the early 1980s through the late 1990s, the extent of the rebound in census that occurred in the next ten years and the recent return to gradual decline after 2008.

**Chart 3. Trend in Average Daily Acute Care Patient Census:
Maryland Hospitals, CY 1980 - 2012**



Source: Maryland Health Care Commission. Note: Data reported is based on the Hospital Discharge Abstract Data Base for

calendar years 1980 - 2012 and reflects the average daily census for all services excluding newborn and rehabilitation services.

Table 4 profiles the FY 2013 - 2014 change in total licensed acute care hospital beds from a regional perspective. The State as a whole experienced an overall decrease of 1.7% in bed capacity. All Maryland health planning regions saw an overall decrease in bed capacity for FY 2014, Central Maryland had the lowest decrease in bed capacity, the Eastern Shore showed the largest overall decrease in bed capacity. Statewide, thirteen hospitals saw an increase in bed capacity, twenty-nine hospitals saw a decrease in bed capacity and four hospitals had no change in bed capacity from the previous year.

**Table 4. Change in Number of Total Licensed Acute Care Beds by Region:
Maryland Hospitals, FY 2013 - FY 2014**

Region	Total Number of Hospitals	Net Change in Number of Total Licensed Beds	Percent Change	Number of Hospitals with an Increase in Beds	Number of Hospitals with a Decrease in Beds	Number of Hospitals with No Change in Hospital Beds
Western Maryland	4	(46)	-5.7%	0	4	0
Montgomery County	5	(17)	-1.3%	2	2	1
Southern Maryland	8	(21)	-2.0%	3	5	0
Central Maryland	22	(41)	-0.6%	8	12	2
Eastern Shore	7	(46)	-6.9%	0	6	1
MARYLAND TOTAL	46	(171)	-1.7%	13	29	4

Source: Maryland Health Care Commission

Tables 5 and 6 profile the change in the inventory of licensed acute care hospital beds for the past ten fiscal years for the four acute care bed service categories. As can be seen, there have been no dramatic changes in the allocation of acute care beds by Maryland's hospitals over this period, with MSGA beds accounting for an average of 81% of total acute care beds, obstetric beds comprising an average of 8%, acute psychiatric beds, on average, 7% of total, and pediatric beds, 4% of total.

**Table 5. Allocation of Licensed Acute Care Beds by Service
Maryland Hospitals, FY2005 - 2014**

Service Category	2005	2006	2007	2008	2009	2010	2011	2012	2013	2014
MSGA	8,318	8,349	8,451	8,694	8,827	8,890	8,738	8,590	8,352	8,178
Obstetric	851	840	838	848	854	851	848	851	851	847
Pediatric	460	457	459	458	459	451	452	447	442	438
Acute Psychiatric	692	677	678	681	687	688	691	695	703	714
TOTAL	10,321	10,323	10,426	10,681	10,827	10,880	10,729	10,583	10,348	10,177

Source: Maryland Health Care Commission

**Table 6. Allocation of Licensed Acute Care Beds by Service (Percentage),
Maryland Hospitals, FY 2005 - FY 2014**

Service Category	2005	2006	2007	2008	2009	2010	2011	2012	2013	2014
MSGA	80.6%	80.9%	81.1%	81.4%	81.5%	81.7%	81.4%	81.2%	80.7%	80.4%
Obstetric	8.2%	8.1%	8.0%	7.9%	7.9%	7.8%	7.9%	8.0%	8.2%	8.3%
Pediatric	4.5%	4.4%	4.4%	4.3%	4.2%	4.1%	4.2%	4.2%	4.3%	4.3%
Acute Psychiatric	6.7%	6.6%	6.5%	6.4%	6.3%	6.3%	6.4%	6.6%	6.8%	7.0%
TOTAL	100.0%	100.0%	100.0%	100.0%	100.0%	100.0%	100.0%	100.0%	100.0%	100.0%

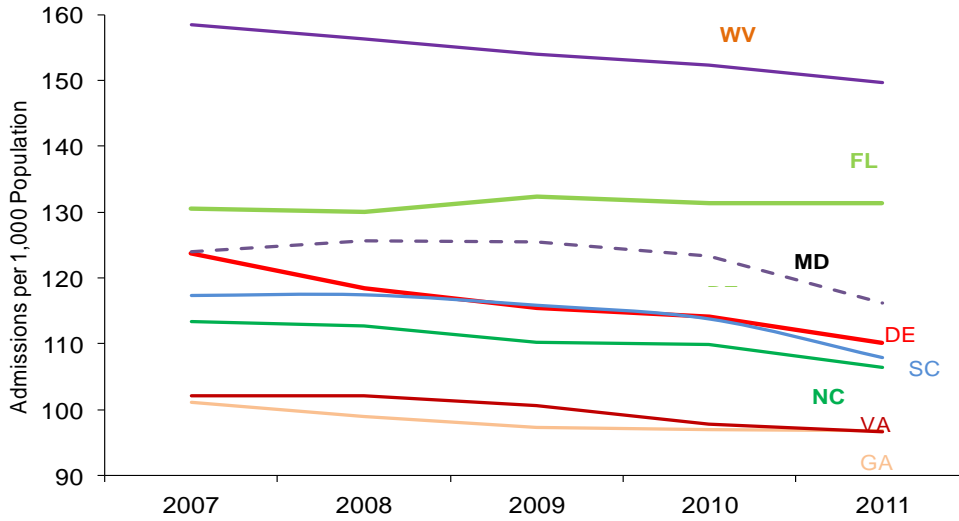
Source: Maryland Health Care Commission

Demand for Hospital Beds In Maryland Compared with Regional and National Trends

The following graphs profile information from Hospital Statistics, an annual publication of the American Hospital Association. They reflect this publication's reported acute care hospital use rates and average stay statistics for Maryland and contrasts the demand reported for other Southeastern States and the U.S. experience.

The first two graphs compare hospital admissions per thousand population and average length of hospital stay in Maryland with the experience of the seven other states in the South Atlantic Census Region. This data is not age-adjusted. The relative age of the population in these states is an important factor in its interpretation. To provide some context, the accompanying table compares the proportion of 65 and older persons in the total population of these states, as recorded in the estimated 2011 U.S. Census of population.

**Chart 4: Hospital Admissions per 1,000 Population
All Hospital Unit Admissions (Excludes NH Unit Admissions)
South Atlantic Census Region States
2007-2011**



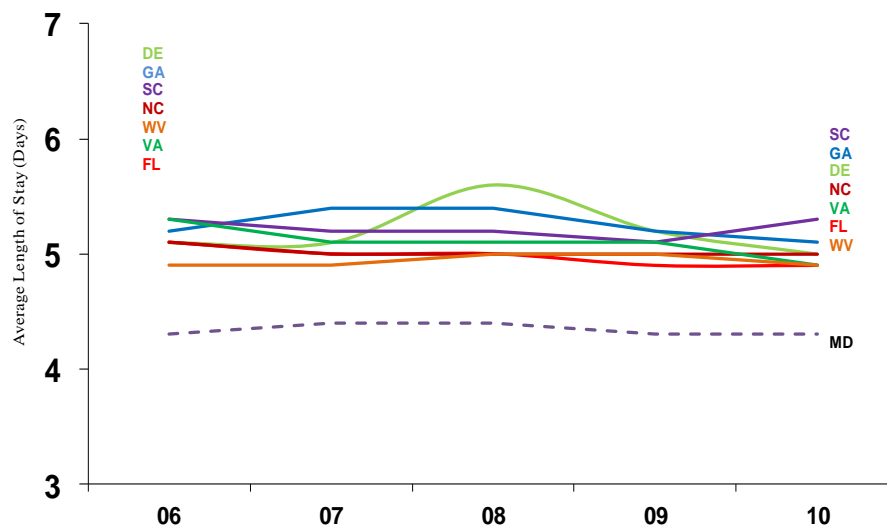
Source: AHA Hospital Statistics (2013 Edition)

**Table 7
Proportion of Total Population Aged 65 and Older
South Atlantic Census Region States, 2011**

State	Percentage of Population Aged 65 and Older
Florida	17.6%
West Virginia	16.2%
Delaware	14.8%
South Carolina	14.0%
North Carolina	13.2%
Maryland	12.6%
Virginia	12.5%
Georgia	11.0%

Source: U.S. Census Bureau, Estimated 2011

**Chart 5: Hospital Average Length of Stay
All Hospital Unit Admissions (Excludes NH Unit Admissions)
South Atlantic Census Region States
2006-2010**

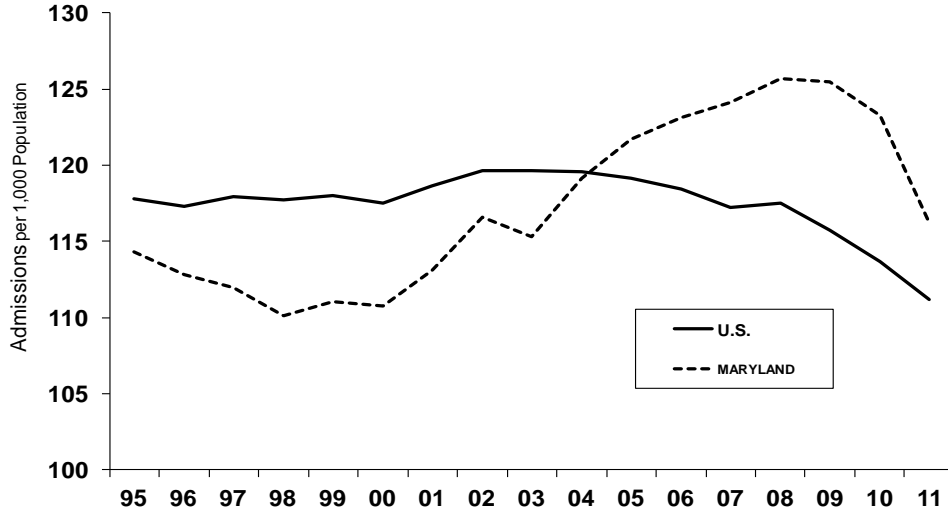


Source: AHA Hospital Statistics (2013 Edition)

As will be noted, from a regional perspective, Maryland’s admissions rate has been lower than that of the states in the South Atlantic region with a higher percentage of population aged 65 and older, Florida and West Virginia, as would be expected. Maryland’s admissions rate does not compare well in this recent time period with the Carolinas, Delaware, or Virginia, all of which have only slightly older populations or populations comparable in age to that of Maryland. However, Maryland stands out as having a distinctly shorter average length of stay, when compared with these other states, as shown in Chart 5.

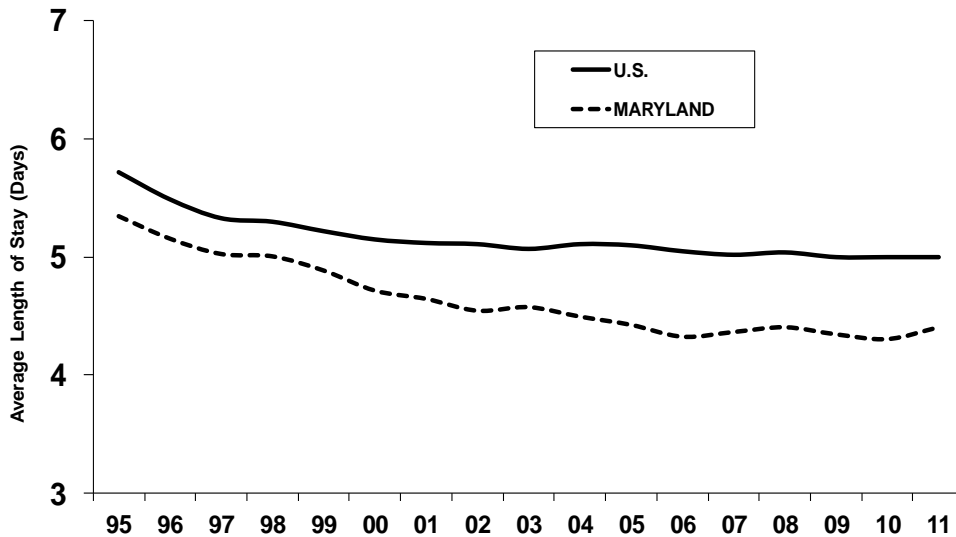
The following graphs, taken from the same data source, provide a longer-term perspective on Maryland and the Nation. Maryland had an enviable record with respect to admissions rate and average length of hospital stay in the 1990s but this changed during the previous decade. The Maryland admissions rate rose sharply from 1998 to 2008, matching and surpassing the national rate. It began declining after 2009, lagging a more gradual trend of decline in the overall U.S. admission rate that started several years earlier. Consistent with the regional comparison, Maryland has been steadily discharging hospital patients more quickly, on average, than has been the National experience. Some narrowing of the gap between Maryland’s ALOS and that of the U.S. could be anticipated if Maryland’s hospitals continue to reduce one day stays. The Health Services Cost Review Commission initiated policy changes in recent years aimed at reducing very short-stay admissions and readmissions that occur within a short-time frame after discharge, prompted by data indicating that Maryland hospitals were underperforming relative to the rest of the Nation on these potentially avoidable uses of hospital inpatient facilities.

**Chart 6: Hospital Admissions per 1,000 Population
All Hospital Unit Admissions (Excludes NH Unit Admissions)
U.S. and Maryland
1995-2011**



Source: AHA Hospital Statistics (Average of Published Rates, 2000, 2002-2007, 2009-2013 Editions)

**Chart 7: Hospital Average Length of Stay
All Hospital Unit Admissions (Excludes NH Unit Admissions)
U.S. and Maryland
1995-2011**



SOURCE: AHA HOSPITAL STATISTICS

Note: The American Hospital Association (AHA) conducts an annual survey of all hospitals, both AHA-registered and nonregistered, in the U.S. and its associated areas. AHA reports, overall, the average response rate over the past five

years has been approximately 85 percent.

Critical Care Beds

Table 8 shows the FY 2014 inventory of critical care beds, which in the case of adult critical care beds, are a subset of MSGA beds. Adult critical care beds comprise 16.1% of the state's licensed MSGA bed inventory, ranging from just under 10% in Western Maryland to 17.2% and 16.9% of licensed MSGA beds in Montgomery County and Central Maryland, respectively. Pediatric critical care beds comprise 16.4% of the state's licensed pediatric bed inventory.

**Table 8. Critical Care Bed Inventory:
Maryland Hospitals, FY 2014**

Jurisdiction/Region	Hospital	Critical Care Beds	
		Adult	Pediatric
Allegany County	Western Maryland Regional Medical Center	17	
Frederick County	Frederick Memorial Hospital	18	
Garrett County	Garrett County Memorial Hospital	3	
Washington County	Meritus Medical Center	24	
WESTERN MARYLAND TOTAL		62	0
Montgomery County	Holy Cross Hospital of Silver Spring	42	
	MedStar Montgomery Medical Center	12	
	Shady Grove Adventist Hospital	28	
	Suburban Hospital	57	
	Washington Adventist Hospital	34	
MONTGOMERY COUNTY TOTAL		173	0
Calvert County	Calvert Memorial Hospital	5	
Charles County	University of Maryland Charles Regional Medical Center	20	
Prince George's County	Doctors Community Hospital	24	
	Fort Washington Medical Center	4	
	Laurel Regional Hospital	10	
	Prince George's Hospital Center	34	
	MedStar Southern Maryland Hospital	24	
St. Mary's County	MedStar St. Mary's Hospital	12	
SOUTHERN MARYLAND TOTAL		133	0
Anne Arundel County	Anne Arundel Medical Center	20	
	University of Maryland Baltimore Washington Medical Center	30	
Baltimore City	Bon Secours Hospital	13	
	Johns Hopkins Bayview Medical Center*	52	
	MedStar Good Samaritan Hospital	17	
	MedStar Harbor Hospital	17	
	MedStar Union Memorial Hospital	60	
	Mercy Medical Center	32	
	Sinai Hospital at Baltimore	41	6
	St. Agnes Hospital	28	2
	The Johns Hopkins Hospital	116	40
	University of Maryland Medical Center*	266	24
	University of Maryland Medical Center Midtown Campus	13	
	University of Maryland Rehabilitation and Orthopaedics Institute	5	
Baltimore County	Greater Baltimore Medical Center	36	
	MedStar Franklin Square Hospital	28	
	Northwest Hospital Center	16	
	University of Maryland St. Joseph Medical Center	38	
Carroll County	Carroll Hospital Center	12	
Harford County	Harford Memorial Hospital	6	
	Upper Chesapeake Medical Center	14	
Howard County	Howard County General Hospital	16	
CENTRAL MARYLAND TOTAL		876	72
Cecil County	Union Hospital of Cecil County	6	
Dorchester County	University of Maryland Shore Medical Center at Dorchester	6	
Kent County	University of Maryland Shore Medical Center at Chestertown	6	
Somerset County	Edward W. McCready Memorial Hospital	0	
Talbot County	University of Maryland Shore Medical Center at Easton	10	
Wicomico County	Peninsula Regional Medical Center	42	
Worcester County	Atlantic General Hospital	6	
EASTERN SHORE TOTAL		76	0
MARYLAND STATE TOTAL		1,320	72

Source: Maryland Health Care Commission. Note: Adult critical care beds include all medical surgical intensive care and coronary care beds and excludes definitive observation/stepdown beds, pediatric intensive care beds and NICU bassinets. Adult critical care beds are part of the larger MSGA inventory.

*Johns Hopkins Bayview includes 10 Burn Critical Care Beds, and University of Maryland Medical Center includes 115 Shock Trauma Beds.

Monitored Beds

Monitored beds are beds which the hospital identified as equipped with cardiac monitoring. “Monitored” means that cardiac monitoring is available for identified hospital beds. Previously this meant a bed was hard-wired for cardiac monitoring. With the institution of remote centralized monitoring, a wireless transmitting system that can be viewed on a central surveillance system, cardiac monitoring is no longer dependent on a stationary bed being hard wired. Wireless monitoring can detect early warning signs and changes in a patient’s condition through the continuous automated collection of key vital signs.

Table 9 identifies the proportion of total licensed acute care beds, by hospital, which the hospital identified as equipped with cardiac monitoring.

From FY 2008 to FY 2012, the number of monitored beds reported by Maryland’s acute care general hospitals increased 32%, this compares to the 18% increase from FY 2008 to FY 2011, in part due to the increase of monitoring capability with the introduction of wireless centralized systems. While monitored beds as a percentage of all licensed beds, from FY 2008 to FY 2011 increased an average of 5.6% per year, in FY 2013, the increase in monitored beds was 12%. The increase for FY 2014 is 8.5%. The number of monitored beds reported by Maryland’s acute care hospitals increased from 55% of total licensed beds in FY 2013 to 60% for FY 2014.

In addition to collecting monitored bed inventories for licensed acute care beds, MHCC also compiles that data for bassinets for hospitals that provide obstetrical and newborn nursery services. Thirty-two hospitals provide obstetric and perinatal services and report a combined total of 1,375 newborn nursery bassinets; of these bassinets, 531 have monitoring capability.

**Table 9. Licensed Acute Care Beds with Monitoring Capability:
Maryland Hospitals, FY2014**

Jurisdiction/Region	Hospital Name	FY 2014 Licensed Beds	Monitorable Beds	Monitorable as % of Licensed Beds
Allegany County	Western Maryland Regional Medical Center	200	76	38.0%
Frederick County	Frederick Memorial Hospital	297	200	67.3%
Garrett County	Garrett County Memorial Hospital	26	26	100.0%
Washington County	Meritus Medical Center	237	141	59.5%
	WESTERN MARYLAND TOTAL	760	443	58.3%
Montgomery County	Holy Cross Hospital of Silver Spring	397	150	37.8%
	MedStar Montgomery Medical Center	132	46	34.8%
	Shady Grove Adventist Hospital	312	240	76.9%
	Suburban Hospital	236	126	53.4%
	Washington Adventist Hospital	252	146	57.9%
	MONTGOMERY COUNTY TOTAL	1,329	708	53.3%
Calvert County	Calvert Memorial Hospital	92	42	45.7%
Charles County	University of Maryland Charles Regional Medical Center	121	121	100.0%
Prince George's County	Doctors Community Hospital	198	87	43.9%
	Fort Washington Medical Center	33	16	48.5%
	Laurel Regional Hospital	78	36	46.2%
	Prince George's Hospital Center	214	121	56.5%
	MedStar Southern Maryland Hospital Center	227	176	77.5%
St. Mary's County	MedStar St. Mary's Hospital	89	56	62.9%
	SOUTHERN MARYLAND TOTAL	1,052	655	62.3%
Anne Arundel County	Anne Arundel Medical Center	385	325	84.4%
	University of Maryland Baltimore Washington Medical Center	319	154	48.3%
Baltimore City	Bon Secours Hospital	107	50	46.7%
	Johns Hopkins Bayview Medical Center	355	169	47.6%
	MedStar Good Samaritan Hospital of Maryland	206	99	48.1%
	MedStar Harbor Hospital	136	97	71.3%
	MedStar Union Memorial Hospital	221	127	57.5%
	Mercy Medical Center	225	113	50.2%
	Sinai Hospital of Baltimore	421	183	43.5%
	St. Agnes Hospital	276	139	50.4%
	The Johns Hopkins Hospital	1,060	728	68.7%
	University of Maryland Medical Center	816	748	91.7%
	University of Maryland Medical Center Midtown Campus	128	91	71.1%
	University of Maryland Rehabilitation & Orthopaedic Institute	10	10	100.0%
Baltimore County	Greater Baltimore Medical Center	255	86	33.7%
	MedStar Franklin Square Hospital	347	154	44.4%
	Northwest Hospital Center	243	95	39.1%
	University of Maryland St. Joseph Medical Center	232	147	63.4%
Carroll County	Carroll Hospital Center	151	54	35.8%
Harford County	Harford Memorial Hospital	89	65	73.0%
	Upper Chesapeake Medical Center	185	137	74.1%
Howard County	Howard County General Hospital	253	137	54.2%
	CENTRAL MARYLAND TOTAL	6,420	3,908	60.9%
Cecil County	Union Hospital of Cecil County	85	34	40.0%
Dorchester County	University of Maryland Shore Medical Center at Dorchester	41	16	39.0%
Kent County	University of Maryland Shore Medical Center at Chestertown	41	30	73.2%
Somerset County	Edward W. McCready Memorial Hospital	4	4	100.0%
Talbot County	University of Maryland Shore Medical Center at Easton	112	46	41.1%
Wicomico County	Peninsula Regional Medical Center	288	270	93.8%
Worcester County	Atlantic General Hospital	45	32	71.1%
	EASTERN SHORE TOTAL	616	432	70.1%
STATE TOTAL		10,177	6,146	60.4%

Source: MHCC Supplemental Survey: Inpatient Monitoring Capacity, FY2014. Data are self reported. Capacity for inpatient monitoring means cardiac monitoring is available for the reported numbers of beds. Note: The calculated percentage reflects total licensed beds and does not necessarily reflect the actual complement of beds set up and staffed by the hospital.

Hospital System Affiliation

Table 10 profiles the trend in licensed acute care beds for hospitals that are members of multihospital systems and for hospitals that are independent or are the only Maryland hospital in a multi-hospital system. Sixty-one percent (61%) of Maryland's acute care general hospitals are part of the state's seven multihospital systems.

Chart 8 shows the number of Maryland hospitals and beds that are part of a multihospital system and the number of hospitals and beds that are not part of a multihospital system in Maryland. Although there was little change from 2001 through 2007, the following six years saw an increase in the number of hospitals joining multihospital systems.

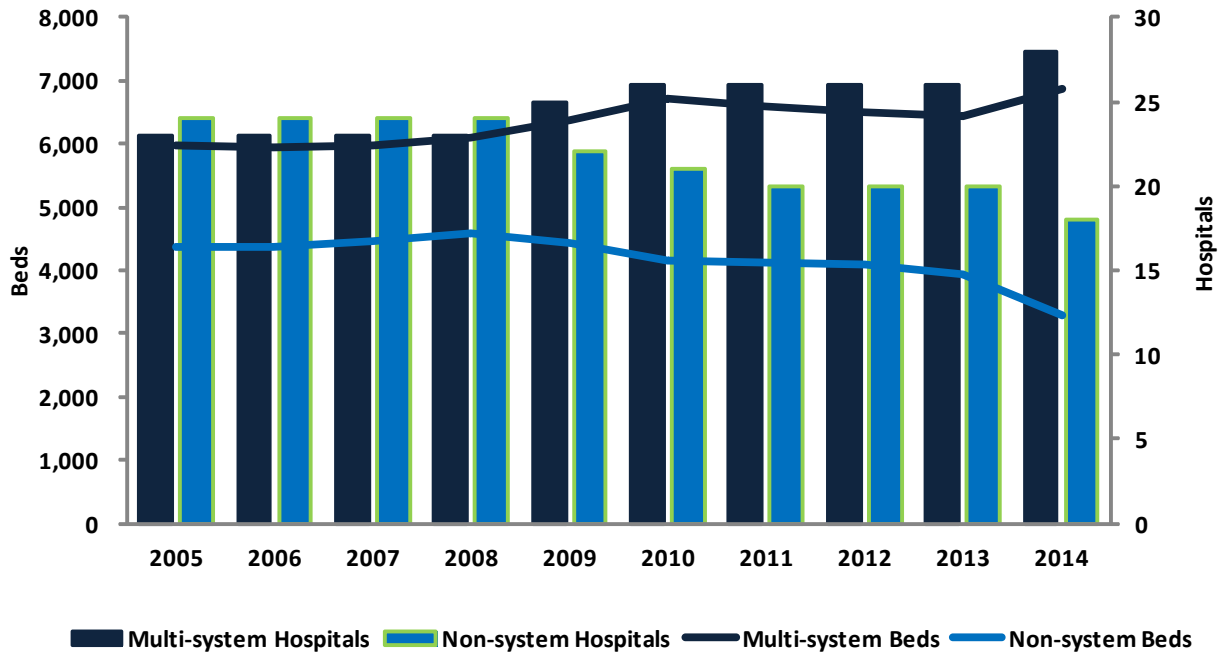
Table 11 compares the growth and annual change in the number of hospitals and beds that are part of Maryland multihospital systems with hospitals that are independent, reflecting the annual percent change in the distribution of beds and the change during the last ten years (FY 2005 to FY 2014).

**Table 10. Trend in Licensed Acute Care Beds by System Affiliation:
Maryland Hospitals, FY 2005 - 2014**

System Name	System Hospitals	2005	2006	2007	2008	2009	2010	2011	2012	2013	2014
Johns Hopkins Medical System (JHH)	The Johns Hopkins Hospital	945	956	958	982	979	990	994	992	1,000	1,060
	Johns Hopkins Bayview Medical Center	310	316	323	333	345	346	348	348	355	355
	Howard County General Hospital	212	204	208	219	209	227	238	249	249	253
	Suburban Hospital	-	-	-	-	-	239	222	233	229	236
	System Total	1,467	1,476	1,489	1,534	1,533	1,802	1,802	1,822	1,833	1,904
University of Maryland Medical System (UMMS)	University of Maryland Medical Center	650	665	669	689	705	731	757	779	800	816
	Univ. of MD Baltimore Washington Medical Center	272	278	286	293	298	311	321	308	307	319
	Univ. of MD Medical Center Midtown Campus	214	196	205	209	191	180	167	164	155	128
	Univ. of MD Rehabilitation & Orthopaedic Institute	11	10	11	10	11	10	10	9	9	10
	Univ. of MD St. Joseph Medical Center	-	-	-	-	-	-	-	-	-	232
	Univ. of MD Charles Regional Medical Center	-	-	-	-	-	-	120	124	110	121
	Univ. of MD Shore Medical Center at Easton	-	-	120	123	120	125	120	116	112	112
	Univ. of MD Shore Medical Center at Dorchester	-	-	53	49	54	54	53	52	46	41
	Univ. of MD Shore Medical Center at Chestertown	-	-	-	-	57	53	47	46	42	41
System Total	1,147	1,149	1,344	1,373	1,436	1,464	1,595	1,598	1,581	1,820	
MedStar Health*	MedStar Franklin Square Hospital	335	343	357	362	380	371	376	347	355	347
	MedStar Good Samaritan Hospital	252	279	265	265	245	236	235	222	224	206
	MedStar Harbor Hospital	177	182	186	203	215	221	193	179	160	136
	MedStar Montgomery Medical Center	-	-	-	-	165	170	159	158	138	132
	MedStar Southern Maryland Hospital Center	-	-	-	-	-	-	-	-	-	227
	MedStar St. Mary's Hospital	-	-	-	-	-	-	96	90	90	89
	MedStar Union Memorial Hospital	283	287	279	283	292	295	271	231	236	221
	System Total	1,047	1,091	1,087	1,113	1,297	1,293	1,330	1,227	1,203	1,358
LifeBridge Health	Sinai Hospital of Baltimore	393	392	393	398	415	413	424	416	426	421
	Northwest Hospital Center	204	209	214	213	218	221	215	221	225	243
	System Total	597	601	607	611	633	634	639	637	651	664
Adventist HealthCare	Washington Adventist Hospital	318	292	285	294	292	288	281	271	252	252
	Shady Grove Adventist Hospital	281	269	268	275	293	320	336	339	331	312
	System Total	599	561	553	569	585	608	617	610	583	564
Dimensions Healthcare System	Prince George's Hospital Center	283	269	268	264	246	254	244	242	224	214
	Laurel Regional Hospital	116	108	96	95	97	95	87	83	77	78
	System Total	399	377	364	359	343	349	331	325	301	292
Western Maryland Medical (Health) System	Braddock Hospital	147	144	148	155	154	154	-	-	-	-
	Memorial Hosp & Med Ctr. of Cumberland	129	124	120	109	117	108	-	-	-	-
	Western Maryland Regional Medical Center	-	-	-	-	-	-	-	-	-	-
System Total	276	268	268	264	271	262	-	-	-	-	
Upper Chesapeake Health System	Upper Chesapeake Medical Center	152	149	167	168	182	196	186	175	181	185
	Harford Memorial Hospital	85	91	94	91	104	105	101	97	89	89
	System Total	237	240	261	259	286	301	287	272	270	274
Shore Health System	Memorial Hospital at Easton	135	129	-	-	-	-	-	-	-	-
	Dorchester General Hospital	60	58	-	-	-	-	-	-	-	-
	System Total	195	187	-	-	-	-	-	-	-	-
Total: System Hospitals		5,964	5,950	5,973	6,082	6,384	6,713	6,601	6,491	6,422	6,876
Non-System Hospitals	Year of System Affiliation/ System/ Current Name	2005	2006	2007	2008	2009	2010	2011	2012	2013	2014
Anne Arundel Medical Center		265	265	265	278	301	316	324	336	380	385
Atlantic General Hospital		44	40	49	51	53	55	53	53	48	45
Bon Secours Hospital		148	142	141	151	125	126	141	127	115	107
Calvert Memorial Hospital		102	105	107	105	106	98	98	95	95	92
Carroll Hospital Center		194	199	210	216	218	213	195	189	158	151
Chester River Hospital Center	2009/UMMS/Univ. of MD Shore Med. Ctr. at Chestertown	56	57	58	62	-	-	-	-	-	-
Civista Medical Center	2011/UMMS/Univ. of MD Charles Regional Med. Ctr.	116	117	109	121	129	120	-	-	-	-
Doctors Community Hospital		194	181	186	192	195	190	195	219	207	198
Edward W. McCready Memorial Hospital		9	8	9	8	9	8	8	9	5	4
Fort Washington Medical Center		43	41	42	42	43	43	42	41	31	33
Frederick Memorial Hospital		231	232	227	246	269	274	276	309	298	297
Garrett County Memorial Hospital		32	33	31	34	36	33	31	30	29	26
Greater Baltimore Medical Center		300	287	292	298	310	300	285	281	270	255
Holy Cross Hospital of Silver Spring		352	365	379	404	408	404	402	409	396	397
Mercy Medical Center		223	228	224	235	243	244	244	226	233	225
Meritus Medical Center		243	246	243	264	258	260	258	252	245	237
Montgomery General Hospital	2009/MedStar/MedStar Montgomery General Hosp.	156	144	144	149	-	-	-	-	-	-
Peninsula Regional Medical Center		333	360	371	366	362	358	362	363	317	288
St. Agnes Hospital		300	308	323	314	307	318	314	296	287	276
St. Joseph Medical Center	2013/UMMS/Univ. of MD/ St. Joseph Medical Ctr.	333	342	370	364	354	345	300	263	247	-
St. Mary's Hospital	2010/MedStar/MedStar St. Mary's	84	88	105	108	108	103	-	-	-	-
Southern Maryland Hospital Center	2013/MedStar/MedStar Southern MD Hosp. Ctr.	252	246	257	258	255	246	235	238	239	-
Suburban Hospital	2010/JHH/No Change	231	228	212	228	238	-	-	-	-	-
Union Hospital of Cecil County		116	111	99	105	116	113	113	106	92	85
Western Maryland Regional Medical Ctr.		-	-	-	-	-	-	252	250	234	200
Total: Non-System Hospitals		4,357	4,373	4,453	4,599	4,443	4,167	4,128	4,092	3,926	3,301
Maryland Total		10,321	10,323	10,426	10,681	10,827	10,880	10,729	10,583	10,348	10,177

Source: Maryland Health Care Commission. Systems are multi-hospital systems with more than one hospital in Maryland. *Two general hospitals located in Washington D.C. are part of the MedStar Health System: the Washington Hospital Center with 926 licensed beds and Georgetown University Hospital with 609 licensed beds. The total number of acute beds operated by MedStar, including Washington Hospital Center and Georgetown is 1,533. Note: Shore Health System became University of Maryland Shore Regional Health on July 1, 2013.

Chart 8. Comparison of Multihospital Systems and Non-Multihospital System Hospitals, Maryland FY2005 - FY2014



Source: Maryland Health Care Commission

Table 11. Multihospital Systems and Hospitals and Beds by System Status Maryland FY2007 - FY2014

System Status	2007	2008	Annual Change	2009	Annual Change	2010	Annual Change	2011	Annual Change	2012	Annual Change	2013	Annual Change	2014	Annual Change	Change 2007-2014
Multihospital Systems	8	8		8		8		7		7		7		7		
Multihospital System Hospitals	23	23		25		26		26		26		26		28		21.7%
Beds	5,973	6,082	1.8%	6,384	5.0%	6,713	5.2%	6,601	-1.7%	6,491	-1.7%	6,422	-1.1%	6,876	7.1%	15.1%
Percent of Maryland Hospitals	50%	50%		53%		55%		57%		57%		56.5%		63.0%		
Percent of Beds	57%	57%		59%		62%		62%		61%		62.1%		67.6%		
Non-system Hospitals	24	24		22		21		20		20		20		18		-25.0%
Beds	4,453	4,599	3.3%	4,443	-3.4%	4,167	-6.2%	4,128	-0.9%	4,092	-0.9%	3,926	-4.1%	3,301	-15.9%	-25.9%
Percent of Maryland Hospitals	51%	51%		47%		45%		43%		43%		43.5%		39.1%		
Percent of Beds	43%	43%		41%		38%		38%		39%		37.9%		32.4%		
Total Acute General Hospital	47	47		47		47		46		46		46		46		-2.1%
Total Beds	10,426	10,681	2.4%	10,827	1.4%	10,880	0.5%	10,729	-1.4%	10,583	-1.4%	10,348	-2.2%	10,177	-1.7%	-2.4%

Source: Maryland Health Care Commission

Total Available Acute Care Bed Capacity

The Commission surveys hospitals for the total number of acute care beds they could physically accommodate, if necessary. Available acute care bed capacity is defined as the total number of acute inpatient beds that are available for use, or that could be physically set up in space appropriate for licensed acute inpatient care, as admissions might warrant. It is a physical count of beds based on the available patient rooms with headwalls, measuring the maximum operating capacity under normal, non-emergency circumstances, rather than a measure of staffing capacity.

The survey shows that 37 general hospitals in Maryland with 5,900 licensed acute care beds report the availability of physical bed capacity that exceeds their licensed capacity. These 37 hospitals, in the aggregate, report a physical capacity for 7,620 beds. This excess physical bed capacity (1,720 beds) would potentially be available to accommodate short term growth in demand and, if necessary, major emergencies and disasters, so long as staffing resources could be secured. Southern Maryland has the greatest excess, with reported physical bed capacity exceeding licensed bed capacity by 473 beds, followed by Central Maryland with 504 more physical beds than licensed beds.

Eight hospitals report that their physical capacity to set up acute care beds, as of June, 2013, is less than their licensed bed capacity. These hospitals have a combined total of 3,856 licensed acute care beds and report that, in the aggregate, they only have physical capacity to set up 3,623 acute care beds, a difference of 233 beds.

Statewide, the Commission's June 1, 2013 survey identifies a net of 1,487 beds of physical bed capacity in excess of licensed bed capacity. The results of this survey are shown in Table 12.¹

¹ The data are self reported and not verified by the Commission. To the extent possible, the Commission verifies hospital physical bed capacity on a case by case basis, when reviewing hospital expansion, renovation, and replacement projects submitted under the Certificate of Need Program.

Table 12. Total Available Physical Acute Care Bed Capacity Reported by Maryland Hospitals, June 1, 2013

Hospital Name	Licensed Beds FY 2014	Total Available Physical Capacity	Difference
Anne Arundel Medical Center	385	366	(19)
Atlantic General Hospital	45	62	17
Bon Secours Hospital	107	152	45
Calvert Memorial Hospital	92	126	34
Carroll Hospital Center	151	215	64
Doctors Community Hospital, Inc.	198	218	20
Edward W. McCready Memorial Hospital	4	26	22
Fort Washington Medical Center	33	37	4
Frederick Memorial Hospital	297	315	18
Garrett County Memorial Hospital	26	45	19
Greater Baltimore Medical Center, Inc.	255	342	87
Harford Memorial Hospital, Inc.	89	128	39
Holy Cross Hospital	397	379	(18)
Howard County General Hospital	253	238	(15)
Johns Hopkins Bayview Medical Center	355	348	(7)
Laurel Regional Hospital	78	171	93
MedStar Franklin Square Hospital Center	347	342	(5)
MedStar Good Samaritan Hospital	206	253	47
MedStar Harbor Hospital	136	213	77
MedStar Montgomery Medical Center	132	207	75
MedStar Southern Maryland Hospital Center	227	322	95
MedStar St. Mary's Hospital	89	129	40
MedStar Union Memorial Hospital	221	323	102
Mercy Medical Center, Inc.	225	238	13
Meritus Medical Center	237	258	21
Northwest Hospital Center	243	224	(19)
Peninsula Regional Medical Center	288	380	92
Prince George's Hospital Center	214	367	153
Shady Grove Adventist Hospital	312	336	24
Sinai Hospital of Baltimore	421	421	0
St. Agnes Hospital	276	367	91
Suburban Hospital	236	247	11
The Johns Hopkins Hospital	1,060	971	(89)
Union Hospital of Cecil County	85	130	45
University of Maryland Baltimore Washington Medical Center	319	320	1
University of Maryland Charles Regional Medical Center	121	155	34
University of Maryland Medical Center	816	755	(61)
University of Maryland Medical Center Midtown Campus	128	170	42
University of Maryland Rehabilitation & Orthopaedic Institute	10	28	18
University of Maryland Shore Medical Center at Chestertown	41	46	5
University of Maryland Shore Medical Center at Dorchester	41	80	39
University of Maryland Shore Medical Center at Easton	112	150	38
University of Maryland St. Joseph Medical Center	232	315	83
Upper Chesapeake Medical Center	185	195	10
Washington Adventist Hospital	252	304	52
Western Maryland Regional Medical Center	200	250	50
TOTAL	10,177	11,664	1,487

Source: Maryland Health Care Commission

Note: Total available physical capacity is defined as the total number of acute inpatient beds that are available for use, including those that could be physically set up in space appropriate for licensed acute inpatient care as admissions might warrant. This should be a count of potentially available physical bed capacity rather than a measure of staffing capacity or a reflection of current use of patient care rooms. This is determined by the number of headwalls and/or gas lines that could be made available for inpatient use, without renovations. Rooms with two headwalls/gas lines should be counted as having capacity for two beds, and rooms with one headwall/gas line should be counted as having capacity for one bed, regardless of their current use. It does not include space currently used for non-acute or special hospital beds.

Observation Services

Observation services are those services furnished by the hospital on the hospital's premises, including use of a bed and periodic monitoring by the hospital's nursing or other staff, which are reasonable and necessary to determine the need for a possible admission to the hospital as an inpatient. Such services must be ordered and documented in writing as to time and method (FAX, telephone, etc.) by a medical staff practitioner. Observation services may or may not be provided in a distinct area of the hospital. Observation services include, but are not limited to; monitoring of vital life signs; collecting laboratory samples for diagnostic testing, use of specialized equipment assisting physicians during patient examination and treatment; changing of dressings and cleaning of wounds and incisions; observing and recording the emotional stability of patients; observing patients for reaction to drugs; administering specified medication; and infusing fluids intravenously.

Observation services are identified as a cost center by the Maryland Health Services Cost Review Commission and the standard unit of measure is hours. Extended recovery time for scheduled ambulatory surgery, emergency and/or labor and delivery observation are separate cost centers and are not included in observation services.

Beginning in 2012, hospitals were asked to report whether they use licensed beds, distinct unit (non-licensed) observation beds, or a combination of both licensed and distinct unit observation beds to provide services to observation patients. If distinct unit observation beds were used, the hospitals reported how many distinct unit observation beds were available. The hospitals were also asked if there were plans to expand the number of distinct unit observation beds and, if so, how many beds would be added. Finally, the hospitals were requested to report how many licensed beds were occupied by observation patients on an average day in the past twelve months.

As of June 1, 2013, fourteen hospitals report the existence of distinct unit observation beds. However, only three hospitals use distinct unit observation beds exclusively. Thirty-one (31) hospitals use licensed beds only and 11 hospitals use a combination of distinct unit observation beds and licensed beds.² The total number of distinct unit observation beds available for all Maryland hospitals is 191, an increase of 22 distinct observation beds since 2012. Four hospitals reported that they plan to expand the number of distinct unit observation beds within the next twelve months. The total additional distinct unit observation beds anticipated is 43.

Table 13 below shows the responses as reported by each hospital and Table 14 provides a summary of all Maryland hospitals.

² The University of Maryland Rehabilitation and Orthopaedic Institute does not report the provision of observation services and does not operate an emergency department.

**Table 13. Maryland Acute Care General Hospital Observation (OBV) Services
June 1, 2013**

Hospital Name	Distinct Unit Observation Beds Only	Licensed Beds Only	Combination of Distinct Unit Observation and Licensed Beds	Number of Distinct Unit Observation Beds Available	Average Daily Census/ Observation Patients	Planned Expansion of Distinct Unit Observation Beds	Number of Beds Planned for Expansion
Frederick Memorial Hospital		√			12.0		
Garrett County Hospital		√			2.0		
Meritus Medical Center		√			2.0	yes	14
Western Maryland Regional Medical Center	√			20	12.0		
Western Maryland Total	1	3	0	20	-	-	14
Holy Cross Hospital of Silver Spring			√	19	15.0		
MedStar Montgomery Medical Center			√	14	9.0		
Shady Grove Adventist Hospital			√	14	10.0		
Suburban Hospital			√	8	1.4		
Washington Adventist Hospital		√			10.0		
Montgomery County Total	0	1	4	55	-	-	0
Calvert Memorial Hospital		√			5.0	yes	5
Doctors Community Hospital	√			15	12.0		
Fort Washington Medical Center		√			6.0		
Laurel Regional Hospital		√			6.0		
MedStar Southern Maryland Hospital Center		√			21.0		
MedStar St. Mary's Hospital		√			8.7		
Prince George's Hospital Center		√			15.0		
University of Maryland Charles Regional Medical Center		√			6.0		
Southern Maryland Total	1	7	0	15	-	-	5
Anne Arundel Medical Center			√	19	10.2		
Bon Secours Hospital		√			12.0		
Carroll Hospital Center		√			9.0		
Greater Baltimore Medical Center		√			19.0		
Harford Memorial Hospital		√			6.0		
Howard County General Hospital			√	13	10.4		
Johns Hopkins Bayview Medical Center		√			20.0		
MedStar Franklin Square Hospital			√	24	33.0		
MedStar Good Samaritan Hospital		√			8.7		
MedStar Harbor Hospital			√	5	12.0	yes	12
MedStar Union Memorial Hospital			√	12	20.0		
Mercy Medical Center		√			4.2		
Northwest Hospital Center		√			1.5		
Sinai Hospital of Baltimore		√			3.7		
St. Agnes Hospital		√			18.0		
The Johns Hopkins Hospital		√			9.8		
University of Maryland Baltimore Washington Medical Center		√			16.0		
University of Maryland Medical Center			√	12	18.0		
University of Maryland Medical Center Midtown Campus		√			8.0		
University of Maryland Rehabilitation & Orthopaedic Institute	-	-	-	-	-	-	-
University of Maryland St. Joseph Medical Center		√			6.2		
Upper Chesapeake Medical Center			√	10	15.0	yes	12
Central Maryland Total	0	14	7	95	-	-	24
Atlantic General Hospital		√			3.7		
Edward W. McCready Memorial Hospital		√			0.6		
Peninsula Regional Medical Center		√			12.0		
Union Hospital of Cecil County	√			6	4.0		
University of Maryland Shore Medical Center at Chestertown		√			1.0		
University of Maryland Shore Medical Center at Dorchester		√			1.2		
University of Maryland Shore Medical Center at Easton		√			2.6		
Eastern Shore Total	1	6	0	6	-	-	0
MARYLAND STATE TOTAL	3	31	11	191	-	4	43

Source: MHCC, Supplemental Survey Observation Services, June 1, 2013. *James Lawrence Kernan Hospital does not provide emergency services and does not have observation services.

Table 14. Summary - Acute Care Hospital Observation Beds, June 1, 2013

Observation Services	Total Hospitals	Total Distinct Unit Observation Beds
Distinct Unit Observation Beds Only	3	41
Licensed Beds Only	31	-
Combined Distinct Unit/Licensed Observation Beds	11	150
Total Number of Distinct Unit Observation Beds, All Hospitals		191
Hospitals with Planned Expansion	4	
Number of Proposed Distinct Unit Observation Beds	43	

Source: Maryland Health Care Commission

Emergency Department/ Freestanding Medical Facility (FMF) Treatment Capacity

Maryland has 45 emergency departments located in acute care hospitals and three freestanding emergency treatment facilities operated by hospitals, licensed as “freestanding medical facilities.”³ These FMFs are: (1) Bowie Health Center, located in Bowie (Prince George’s County) and operated by Prince George’s Hospital Center, with 21 treatment spaces allocated to emergency care; (2) Shady Grove Emergency Center at Germantown in Montgomery County with 21 treatment spaces. This FMF is operated by Shady Grove Adventist Hospital; and (3) Queen Anne’s Emergency Center, operated by University of Maryland Medical Center at Easton, with 14 treatment spaces. This facility is located near Grasonville, in Queen Anne’s County.

Table 15 shows the change in emergency treatment capacity from a regional perspective. Nine (9) emergency departments report an increase in treatment capacity in the past year. Two of the 45 hospital emergency departments, both located in Central Maryland, showed a decline in the number of treatment spaces from 2012 to 2013. Overall, Maryland emergency departments/facilities reported an increase of 42 (2.08%) treatment spaces.

Table 16 summarizes the Commission’s supplemental survey of emergency department treatment capacity by hospital or freestanding medical facility and jurisdiction and region, identifying how Maryland’s hospitals classify their Emergency Department or Freestanding Medical Facility treatment spaces.

³ University of Maryland Rehabilitation and Orthopaedic Institute (previously James Lawrence Kernan Hospital) in Baltimore City is the only acute care hospital in Maryland that does not operate an emergency department.

**Table 15. Change in Emergency Department/ Freestanding Medical Facility Treatment Capacity:
Maryland, 2012 - 2013**

REGION	Total Number of Emergency Departments and FMFs	Net Change in Emergency Treatment Spaces	Percent Change in Capacity in Emergency Treatment Spaces	Emergency Departments or FMFs with an Increase in Capacity	Emergency Departments or FMFs with a Decrease in Capacity	Emergency Departments or FMFs with No Change in Capacity
Western Maryland	4	0	0.0%	0	0	4
Montgomery County*	6	2	0.8%	1	0	5
Southern Maryland*	9	12	3.9%	3	0	6
Central Maryland**	21	28	2.5%	5	2	14
Eastern Shore*	8	0	0.0%	0	0	8
State Total	48	42	2.0%	9	2	37

Source: Maryland Health Care Commission. *Montgomery County includes Shady Grove Emergency Center at Germantown, Southern Maryland includes emergency treatment capacity at the Bowie Health Center, and the Eastern Shore includes the Queen Anne's Emergency Center.

**Johns Hopkins Hospital operates 2 distinct emergency centers, the main emergency department and a pediatric emergency department, the emergency departments are combined and reported as one in Table 15.

Note: James Lawrence Kernan Hospital does not provide emergency services.

**Table 16. Inventory of Emergency Department/ Freestanding Medical Facility Treatment Capacity:
Maryland: June 1, 2013**

Jurisdiction/Region	Hospital Name	Treatment Spaces			Non-Treatment Spaces*
		Total Treatment Spaces	Monitored Spaces	Non-Monitored Spaces	
Allegany County	Western Maryland Regional Medical Center	53	30	23	4
Frederick County	Frederick Memorial Hospital	64	23	41	3
Garrett County	Garrett County Hospital	13	12	1	2
Washington County	Meritus Medical Center	55	44	11	1
WESTERN MARYLAND TOTAL		185	109	76	10
Montgomery County	Holy Cross Hospital of Silver Spring	61	35	26	8
	MedStar Montgomery General Hospital	41	32	9	3
	Shady Grove Adventist Emergency Center/Germantown	21	9	12	2
	Shady Grove Adventist Hospital	64	31	33	0
	Suburban Hospital	43	29	14	3
	Washington Adventist Hospital	26	15	11	0
MONTGOMERY COUNTY TOTAL		256	151	105	16
Calvert County	Calvert Memorial Hospital	34	22	12	3
Charles County	University of Maryland Charles Regional Medical Center	38	21	17	3
Prince George's County	Doctors Community Hospital	55	47	8	3
	Fort Washington Medical Center	18	7	11	1
	Laurel Regional Hospital	31	31	0	0
	Prince George's Hospital Center	47	21	26	1
	Bowie Health Center	21	21	0	2
	MedStar Southern Maryland Hospital Center	42	28	14	3
St. Mary's County	MedStar St. Mary's Hospital	32	20	12	6
SOUTHERN MARYLAND TOTAL		318	218	100	22
Anne Arundel County	Anne Arundel Medical Center	67	61	6	12
	University of Maryland Baltimore Washington Medical Ctr.	66	61	5	5
Baltimore City	Bon Secours Hospital	28	22	6	1
	Johns Hopkins Bayview Medical Center	40	22	18	6
	MedStar Good Samaritan Hospital	43	23	20	3
	MedStar Harbor Hospital	35	21	14	1
	MedStar Union Memorial Hospital	49	24	25	4
	Mercy Medical Center	57	47	10	3
	Sinai Hospital of Baltimore	61	46	15	12
	St. Agnes Hospital	64	48	16	6
	The Johns Hopkins Hospital - Main ED	73	73	0	0
	The Johns Hopkins Hospital - Pediatric ED	35	35	0	2
	University of Maryland Medical Center	85	61	24	4
	University of Maryland Medical Center Midtown Campus	28	23	5	0
Baltimore County	Greatr Baltimore Medical Center	45	31	14	5
	MedStar Franklin Square Hospital	96	75	21	1
	Northwest Hospital Center	49	35	14	1
	University of Maryland St. Joseph Medical Center	39	33	6	4
Carroll County	Carroll Hospital Center	43	29	14	6
Harford County	Harford Memorial Hospital	29	29	0	0
	Upper Chesapeake Medical Center	57	49	8	3
Howard County	Howard County General Hospital	55	49	6	20
CENTRAL MARYLAND TOTAL		1,144	897	247	99
Cecil County	Union Hospital of Cecil County	32	18	14	2
Dorchester County	University of Maryland Shore Medical Center at Dorchester	18	18	0	0
Kent County	University of Maryland Shore Medical Center at Chestertown	11	10	1	1
Queen Anne's County	Queen Anne's Emergency Center	14	14	0	1
Somerset County	Edward W. McCready Memorial Hospital	8	6	2	0
Talbot County	University of Maryland Shore Medical Center at Easton	34	32	2	2
Wicomico County	Peninsula Regional Medical Center	51	34	17	0
Worcester County	Atlantic General Hospital	30	7	23	5
EASTERN SHORE TOTAL		198	139	59	11
MARYLAND STATE TOTAL		2,101	1,514	587	158

Source: Maryland Health Care Commission

*Non-treatment spaces in Emergency Departments include decontamination, observation/holding, and triage spaces in which treatment is not provided.

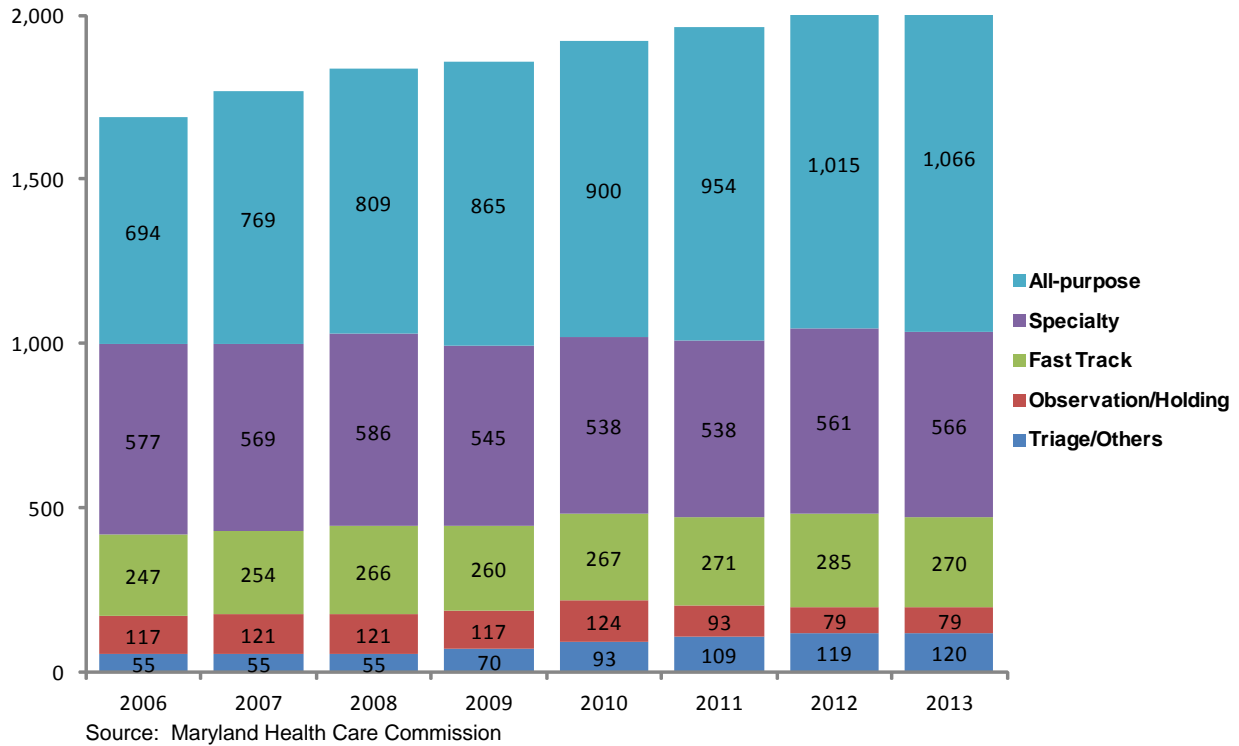
Table 17 shows the trend in Emergency Department/Freestanding Medical Facility Treatment Capacity in Maryland from 2006 to 2012 by region, jurisdiction and hospital/facility. Chart 9 shows the change in the types of treatment spaces in Maryland.

Table 17. Trends in Emergency Department/ Freestanding Medical Facilities Treatment Capacity: Maryland, June 1, 2007 - June 1, 2013

Jurisdiction/Region	Hospital Name	Total Treatment Spaces						
		2007	2008	2009	2010	2011	2012	2013
Allegany County	Braddock Hospital (formerly Sacred Heart)	16	16	16	-	-	-	-
	Memorial Hospital of Cumberland	21	21	20	-	-	-	-
	Western Maryland Regional Medical Center	-	-	-	51	53	53	53
	Frederick County	61	64	64	64	64	64	64
Garrett County	13	13	13	13	13	13	13	
Washington County	46	48	48	48	55	55	55	
	WESTERN MARYLAND TOTAL	157	162	161	176	185	185	185
Montgomery County	Holy Cross Hospital of Silver Spring	55	54	60	59	59	59	61
	MedStar Montgomery Medical Center	32	32	32	41	41	41	41
	Shady Grove Adventist Emergency Ctr. at Germantown	21	21	21	21	21	21	21
	Shady Grove Adventist Hospital	56	56	61	63	64	64	64
	Suburban Hospital	43	43	43	43	43	43	43
	Washington Adventist Hospital	26	26	28	28	26	26	26
		MONTGOMERY COUNTY TOTAL	233	232	245	255	254	254
Calvert County	24	34	34	34	34	34	34	
Charles County	30	30	30	30	30	30	38	
Prince George's County	Doctors Community Hospital	32	32	32	55	55	55	55
	Fort Washington Medical Center	18	18	18	18	18	18	18
	Laurel Regional Hospital	30	30	30	30	30	30	31
	MedStar Southern Maryland Hospital Center	30	28	28	29	34	42	42
	Prince George's Hospital Center	44	44	44	44	44	44	47
	Bowie Health Center	21	21	21	21	21	21	21
St. Mary's County	27	30	30	32	32	32	32	
	MedStar St. Mary's Hospital	27	30	30	32	32	32	32
	SOUTHERN MARYLAND TOTAL	256	267	267	293	298	306	318
Anne Arundel County	44	44	44	44	49	67	67	
	Anne Arundel Medical Center	44	44	44	44	49	67	
	University of MD Baltimore Washington Medical Center	46	57	66	66	66	66	
Baltimore City	Bon Secours Hospital	33	32	32	29	32	32	28
	Johns Hopkins Bayview Medical Center	39	39	39	40	40	40	40
	MedStar Good Samaritan Hospital of Maryland	34	34	34	45	43	43	43
	MedStar Harbor Hospital	34	34	35	35	35	35	35
	MedStar Union Memorial Hospital	49	49	49	49	49	49	49
	Mercy Medical Center	45	45	45	45	45	45	57
	Sinai Hospital of Baltimore	54	61	61	61	61	61	61
	St. Agnes Hospital	48	53	53	53	53	59	64
	The Johns Hopkins Hospital - Main ED	54	54	51	51	51	73	73
	The Johns Hopkins Hospital - Pediatric ED	25	25	25	25	25	35	35
	The Johns Hopkins Hospital - Ophthalmology ED	6	6	-	-	-	-	-
	University of Maryland Medical Center	52	52	58	62	62	79	85
	University of Maryland Medical Center Midtown Campus	25	25	25	25	25	29	28
Baltimore County	Greater Baltimore Medical Center	43	45	45	45	45	45	45
	MedStar Franklin Square Hospital	98	98	98	98	96	96	96
	Northwest Hospital Center	38	38	42	43	42	44	49
	University of Maryland St. Joseph Medical Center	49	49	44	39	39	39	39
Carroll County	39	39	39	39	45	43	43	
Harford County	25	31	31	31	31	29	29	
	Harford Memorial Hospital	25	31	31	31	31	29	29
	Upper Chesapeake Medical Center	32	52	52	52	52	52	57
Howard County	68	55	55	55	55	55	55	
	Howard County General Hospital	68	55	55	55	55	55	55
	CENTRAL MARYLAND TOTAL	980	1,017	1,023	1,032	1,041	1,116	1,144
Cecil County	27	27	27	32	32	32	32	
	Union Hospital of Cecil County	27	27	27	32	32	32	32
Dorchester County	11	11	11	11	18	18	18	
	University of Maryland Medical Center at Dorchester	11	11	11	11	18	18	
Kent County	11	11	11	11	11	11	11	
	University of Maryland Medical Center at Chestertown	11	11	11	11	11	11	
Queen Anne's County	-	-	-	-	14	14	14	
	Queen Anne's Emergency Center	-	-	-	-	14	14	
Somerset County	8	8	8	8	8	8	8	
	Edward W. McCready Memorial Hospital	8	8	8	8	8	8	
Talbot County	23	32	34	34	34	34	34	
	University of Maryland Shore Medical Center at Easton	23	32	34	34	34	34	
Wicomico County	43	51	51	51	51	51	51	
	Peninsula Regional Medical Center	43	51	51	51	51	51	
Worcester County	19	19	19	19	19	30	30	
	Atlantic General Hospital	19	19	19	19	19	30	
	EASTERN SHORE TOTAL	142	159	161	166	187	198	198
	STATE TOTAL	1,768	1,837	1,857	1,922	1,965	2,059	2,101

Source: Maryland Health Care Commission, Supplemental Survey - Emergency Departments/Freestanding Medical Facilities, 2007 - 2013

**Chart 9. Change in Number of Emergency Treatment Spaces by Type of Space:
Maryland, 2006 - 2013**



Hospital Surgical Services Capacity

Table 18 displays the inventory of sterile operating rooms, by room type, excluding dedicated cesarean section rooms, reported by Maryland hospitals. Table 19 profiles the inventory of dedicated cesarean section operating rooms and procedure rooms. Procedure rooms are rooms used for endoscopy, cystoscopy, or other minor procedures and many are not sterile rooms, and thus, are only appropriately used for “closed” procedures that do not involve surgical incisions.

**Table 18. Surgical Services Capacity by Hospital and Room Use:
Maryland Hospitals, June 1, 2013**

Hospital	Inpatient General Purpose	Outpatient General Purpose	Mixed Use General Purpose	Inpatient Special Purpose	Outpatient Special Purpose	Mixed Use Special Purpose	Other Operating Rooms	Total Operating Rooms
Anne Arundel Medical Center	0	0	26	0	0	0	0	26
Atlantic General Hospital	0	0	4	0	0	0	0	4
Bon Secours Hospital	0	0	5	0	0	0	0	5
Calvert Memorial Hospital	0	0	6	0	0	0	0	6
Carroll Hospital Center	0	0	10	0	0	0	0	10
Doctors Community Hospital	0	3	7	0	0	0	0	10
Edward W. McCready Memorial Hospital	0	0	2	0	0	0	0	2
Fort Washington Medical Center	0	0	3	0	0	0	0	3
Frederick Memorial Hospital	0	0	11	0	0	0	0	11
Garrett County Memorial Hospital	0	0	3	0	0	0	0	3
Greater Baltimore Medical Center	0	0	30	0	0	0	0	30
Harford Memorial Hospital	0	0	4	0	0	0	0	4
Holy Cross Hospital of Silver Spring	0	0	14	0	0	0	0	14
Howard County General Hospital	0	0	13	0	0	0	0	13
Johns Hopkins Bayview Medical Center	0	0	14	0	0	0	0	14
Laurel Regional Hospital	0	0	6	0	0	0	1	7
MedStar Franklin Square Hospital	0	0	15	0	0	1	0	16
MedStar Good Samaritan Hospital of Maryland	0	0	10	0	0	1	0	11
MedStar Harbor Hospital	0	0	9	0	0	0	0	9
MedStar Montgomery Medical Center	0	0	5	1	0	0	0	6
MedStar Southern Maryland Hospital Center	0	5	5	0	0	0	0	10
MedStar St. Mary's Hospital	0	0	5	0	0	0	0	5
MedStar Union Memorial Hospital	0	0	21	0	0	0	0	21
Mercy Medical Center	0	0	19	0	0	0	3	22
Meritus Medical Center	0	0	11	0	0	0	0	11
Northwest Hospital Center	0	0	9	0	0	0	0	9
Peninsula Regional Medical Center	0	0	10	0	0	3	0	13
Prince George's Hospital Center	1	0	8	0	0	0	0	9
Shady Grove Adventist Hospital	0	0	16	2	0	0	0	18
Sinai Hospital of Baltimore	1	4	12	2	0	6	0	25
St. Agnes Hospital	0	0	19	0	0	0	0	19
Suburban Hospital	0	0	12	2	1	0	0	15
The Johns Hopkins Hospital	0	8	46	0	7	0	0	61
Union Hospital of Cecil County	0	0	4	0	0	2	0	6
University of Maryland Baltimore Washington Medical Center	0	0	16	0	0	0	0	16
University of Maryland Charles Regional Medical Center	0	0	4	0	0	0	0	4
University of Maryland Medical Center	8	0	14	0	0	13	0	35
University of Maryland Medical Center Midtown Campus	0	0	10	0	0	0	0	10
University of Maryland Rehabilitation & Orthopaedic Institute	0	0	6	0	0	0	0	6
University of Maryland Shore Medical Center at Chestertown	0	0	3	0	0	0	0	3
University of Maryland Shore Medical Center at Dorchester	0	0	4	0	0	0	0	4
University of Maryland Shore Medical Center at Easton	0	0	6	0	0	0	0	6
University of Maryland St. Joseph Medical Center	0	0	15	0	0	4	0	19
Upper Chesapeake Medical Center	0	0	11	0	0	0	0	11
Washington Adventist Hospital	0	0	8	0	0	3	0	11
Western Maryland Regional Medical Center	0	0	14	0	0	0	0	14
TOTAL	10	20	505	7	8	33	4	587

Source: Maryland Health Care Commission

**Table 19. Dedicated Cesarean Section Operating Rooms and Procedure Rooms by Hospital:
Maryland Hospitals, June 1, 2013**

Jurisdiction/Region	Hospital	Dedicated Cesarean Section OR's		Procedure Rooms*	
		Inside Sterile Area	Outside Sterile Area	Inside Sterile Area	Outside Sterile Area
Allegheny County	Western Maryland Regional Medical Center	2	0	0	8
Frederick County	Frederick Memorial Hospital	2	0	1	3
Garrett County	Garrett County Memorial Hospital	0	0	0	1
Washington County	Meritus Medical Center	2	0	1	2
WESTERN MARYLAND TOTAL		6	0	2	14
Montgomery County	Holy Cross Hospital of Silver Spring	4	0	2	9
	MedStar Montgomery Medical Center	2	0	1	2
	Shady Grove Adventist Hospital	3	0	3	0
	Suburban Hospital	0	0	1	3
	Washington Adventist Hospital	2	0	2	0
MONTGOMERY COUNTY TOTAL		11	0	9	14
Calvert County	Calvert Memorial Hospital	1	0	1	7
Charles County	Civista Medical Center	0	1	2	1
Prince George's County	Doctors Community Hospital	0	0	1	4
	Fort Washington Medical Center	0	0	1	1
	Laurel Regional Hospital	1	0	1	2
	MedStar Southern Maryland Hospital Center	2	0	2	2
	Prince George's Hospital Center	2	0	1	3
	<i>Total: Prince George's County</i>	<i>6</i>	<i>1</i>	<i>9</i>	<i>20</i>
St. Mary's County	MedStar St. Mary's Hospital	1	0	0	2
SOUTHERN MARYLAND TOTAL		7	1	9	22
Anne Arundel County	Anne Arundel Medical Center	3	0	0	4
	University of MD Baltimore Washington Medical Center	2	0	2	5
	<i>Total: Anne Arundel County</i>	<i>5</i>	<i>0</i>	<i>2</i>	<i>9</i>
Baltimore City	Bon Secours Hospital	0	0	1	3
	Johns Hopkins Bayview Medical Center	2	0	0	7
	MedStar Good Samaritan Hospital of Maryland	0	0	0	5
	MedStar Harbor Hospital	1	0	4	0
	MedStar Union Memorial Hospital	0	0	5	0
	Mercy Medical Center	2	0	8	0
	Sinai Hospital of Baltimore	2	0	5	1
	St. Agnes Hospital	2	0	0	1
	The Johns Hopkins Hospital	3	0	0	23
	University of Maryland Medical Center	3	0	3	9
	University of Maryland Medical Center Midtown Campus**	0	0	0	8
	Univ. of MD Rehabilitation & Orthopaedic Institute	0	0	0	1
	<i>Total: Baltimore City</i>	<i>15</i>	<i>0</i>	<i>26</i>	<i>58</i>
Baltimore County	Greater Baltimore Medical Center	3	0	3	10
	MedStar Franklin Square Hospital	3	0	4	0
	Northwest Hospital Center	0	0	1	2
	University of MD St. Joseph Medical Center	2	0	1	5
	<i>Total: Baltimore County</i>	<i>8</i>	<i>0</i>	<i>9</i>	<i>17</i>
Carroll County	Carroll Hospital Center	2	0	0	3
Harford County	Harford Memorial Hospital	0	0	2	7
	Upper Chesapeake Medical Center	2	0	2	0
	<i>Total: Harford County</i>	<i>2</i>	<i>0</i>	<i>4</i>	<i>7</i>
Howard County	Howard County General Hospital	2	0	1	3
CENTRAL MARYLAND TOTAL		34	0	42	97
Cecil County	Union Hospital of Cecil County	1	0	4	2
Dorchester County	University of MD Shore Medical Center at Dorchester	0	0	0	2
Kent County	University of MD Shore Medical Center at Chestertown	0	0	1	0
Somerset County	Edward W. McCready Memorial Hospital	0	0	0	0
Talbot County	University of MD Shore Medical Center at Easton	1	0	0	1
Wicomico County	Peninsula Regional Medical Center	2	0	2	1
Worcester County	Atlantic General Hospital	0	0	0	3
EASTERN SHORE TOTAL		4	0	7	9
MARYLAND TOTAL		62	1	69	156

Source: Maryland Health Care Commission

*Procedure Rooms include dedicated cystoscopy and endoscopy rooms and other procedure rooms

**University of Maryland Medical Center Midtown Campus (formerly Maryland General Hospital) Obstetric services closed effective July 1, 2013

Table 20 shows the trend in surgical services capacity at Maryland hospitals for the three-year period June 1, 2011 through June 1, 2013.

**Table 20. Trends in Number of Surgical Rooms:
Maryland Hospitals, 2011 - 2013**

Jurisdiction/ Region	Hospital	2011			2012			2013		
		Total Operating Rooms	Total Procedure Rooms	Total Cesarean Section ORs	Total Operating Rooms	Total Procedure Rooms	Total Cesarean Section ORs	Total Operating Rooms	Total Procedure Rooms	Total Cesarean Section ORs
Allegany County	Western Maryland Regional Medical Center	14	8	2	14	8	2	14	8	2
Frederick County	Frederick Memorial Hospital	11	4	2	11	4	2	11	4	2
Garrett County	Garrett County Memorial Hospital	3	1	0	3	1	0	3	1	0
Washington County	Meritus Medical Center	11	3	2	11	3	2	11	3	2
WESTERN MARYLAND TOTAL		39	16	6	39	16	6	39	16	6
Montgomery County	Holy Cross Hospital of Silver Spring	14	11	4	14	11	4	14	11	4
	MedStar Montgomery Medical Center	6	3	2	6	3	2	6	3	2
	Shady Grove Adventist Hospital	18	3	3	18	3	3	18	3	3
	Suburban Hospital	15	4	0	15	4	0	15	4	0
	Washington Adventist Hospital	10	4	2	11	2	2	11	2	2
MONTGOMERY COUNTY TOTAL		63	25	11	64	23	11	64	23	11
Calvert County	Calvert Memorial Hospital	6	8	1	6	8	1	6	8	1
Charles County	Univ.of MD Charles Regional Medical Center	4	3	1	4	3	1	4	3	1
Prince George's County	Doctors Community Hospital	11	5	0	11	6	0	10	5	0
	Fort Washington Medical Center	3	2	0	3	2	0	3	2	0
	Laurel Regional Hospital	7	3	1	7	3	1	7	3	1
	Prince George's Hospital Center	9	4	2	9	4	2	9	4	2
	MedStar Southern Maryland Hospital Center	10	5	2	10	4	2	10	4	2
St. Mary's County	MedStar St. Mary's Hospital	5	2	1	5	2	1	5	2	1
SOUTHERN MARYLAND TOTAL		55	32	8	55	32	8	54	31	8
Anne Arundel County	Anne Arundel Medical Center	26	4	3	26	4	3	26	4	3
	Univ. of MD Baltimore Washington Medical Center	16	7	2	16	7	2	16	7	2
Baltimore City	Bon Secours Hospital	5	4	0	5	4	0	5	4	0
	Johns Hopkins Bayview Medical Center	14	7	2	14	7	2	14	7	2
	MedStar Good Samaritan Hospital	11	5	0	11	5	0	11	5	0
	MedStar Harbor Hospital	9	5	1	9	4	1	9	4	1
	MedStar Union Memorial Hospital	21	5	0	21	5	0	21	5	0
	Mercy Medical Center	22	8	2	22	8	2	22	8	2
	Sinai Hospital of Baltimore	21	7	2	25	6	2	25	6	2
	St. Agnes Hospital	19	1	2	19	1	2	19	1	2
	The Johns Hopkins Hospital	53	32	3	60	23	3	61	23	3
	University of Maryland Medical Center	30	11	3	35	12	3	35	12	3
	Univ. of MD Medical Center Midtown Campus	10	8	1	10	8	1	10	8	0
	Univ. of MD Rehabilitation & Orthopaedic Institute	6	1	0	6	1	0	6	1	0
Baltimore County	Greater Baltimore Medical Center	32	13	3	30	13	3	30	13	3
	MedStar Franklin Square Hospital	16	4	3	16	4	3	16	4	3
	Northwest Hospital Center	9	3	0	9	3	0	9	3	0
	University of Maryland St. Joseph Medical Center	20	6	2	19	6	2	19	6	2
Carroll County	Carroll Hospital Center	10	3	2	10	3	2	10	3	2
Harford County	Harford Memorial Hospital	4	9	0	4	9	0	4	9	0
	Upper Chesapeake Medical Center	11	2	0	11	2	2	11	2	2
Howard County	Howard County General Hospital	13	4	2	13	4	2	13	4	2
CENTRAL MARYLAND TOTAL		378	149	33	391	139	35	392	139	34
Cecil County	Union Hospital of Cecil County	6	6	1	6	6	1	6	6	1
Dorchester County	Univ. of MD Shore Medical Center at Dorchester	4	2	0	4	2	0	4	2	0
Kent County	Univ. of MD Shore Medical Center at Chestertown	3	1	1	3	1	0	3	1	0
Somerset County	Edward W. McCready Memorial Hospital	2	0	0	2	0	0	2	0	0
Talbot County	Univ. of MD Shore Medical Center at Easton	6	1	1	6	1	1	6	1	1
Wicomico County	Peninsula Regional Medical Center	13	3	2	13	3	2	13	3	2
Worcester County	Atlantic General Hospital	4	3	0	4	3	0	4	3	0
EASTERN SHORE TOTAL		38	16	5	38	16	4	38	16	4
MARYLAND TOTAL		573	238	63	587	226	64	587	225	63

Source: Maryland Health Care Commission

*Procedure Rooms include dedicated cystoscopy and endoscopy rooms and other procedure rooms.

Obstetric and Perinatal Services Capacity

Thirty-two of the 46 acute care hospitals in Maryland provide obstetric and perinatal services.⁴ Table 21 outlines the distribution of obstetric service capacity by region, county and hospital.

Table 21. Obstetric Service Capacity, Maryland Hospitals, June 1, 2013

Jurisdiction/ Region	Hospital	Labor Beds	Delivery Beds	Recovery Beds	Ante Partum	Post Partum Beds	Labor- Delivery Beds	Labor- Delivery- Recovery (LDR) Beds	Labor-Delivery- Recovery- Post Partum (LDRP) Beds	Cesarean Section ORs
Allegany County	Western Maryland Regional Medical Center	0	0	2	2	14	0	4	0	2
Frederick County	Frederick Memorial Hospital	0	0	0	0	27	0	9	0	2
Garrett County	Garrett County Memorial Hospital	1	0	0	2	2	0	1	3	0
Washington County	Meritus Medical Center	0	0	0	6	6	0	0	18	2
WESTERN MARYLAND TOTAL		1	0	2	10	49	0	14	21	6
Montgomery County	Holy Cross Hospital of Silver Spring	0	0	0	20	68	0	24	0	4
	MedStar Montgomery Medical Center	2	0	2	2	11	0	5	0	2
	Shady Grove Adventist Hospital	0	0	6	8	48	0	16	0	3
	Washington Adventist Hospital	0	0	0	0	25	0	10	0	2
MONTGOMERY COUNTY TOTAL		2	0	8	30	152	0	55	0	11
Calvert County	Calvert Memorial Hospital	0	0	0	0	12	0	5	0	1
Charles County	Univ. of MD Charles Regional Medical Center	0	0	0	2	12	0	4	0	1
Prince George's County	Laurel Regional Hospital	0	0	0	0	10	0	4	0	1
	Prince George's Hospital Center	0	0	0	0	38	0	11	2	2
	MedStar Southern Maryland Hospital Center	0	0	4	0	30	0	8	0	2
	<i>Total: Prince George's County</i>	<i>0</i>	<i>0</i>	<i>4</i>	<i>2</i>	<i>102</i>	<i>0</i>	<i>32</i>	<i>2</i>	<i>7</i>
St. Mary's County	MedStar St. Mary's Hospital	0	0	0	0	12	1	5	0	1
SOUTHERN MARYLAND TOTAL		0	0	4	2	114	1	37	2	8
Anne Arundel County	Anne Arundel Medical Center	0	0	5	4	36	0	24	0	3
	Univ. of MD Baltimore Washington Medical Ctr.	0	0	4	0	18	0	4	0	2
	<i>Total: Anne Arundel County</i>	<i>0</i>	<i>0</i>	<i>9</i>	<i>4</i>	<i>54</i>	<i>0</i>	<i>28</i>	<i>0</i>	<i>5</i>
Baltimore City	Johns Hopkins Bayview Medical Center	0	0	2	0	17	0	6	0	2
	MedStar Harbor Hospital	0	0	0	0	8	0	0	16	1
	Mercy Medical Center	0	0	3	3	29	0	13	0	2
	Sinai Hospital of Baltimore	0	0	3	0	23	0	7	0	2
	St. Agnes Hospital	0	0	0	0	0	0	12	0	2
	The Johns Hopkins Hospital	0	0	3	0	35	0	10	0	3
	University of Maryland Medical Center	5	0	3	8	14	0	7	0	3
Baltimore County	Greater Baltimore Medical Center	0	0	0	12	48	0	17	0	3
	MedStar Franklin Square Hospital	0	0	5	0	17	0	0	20	3
	University of Maryland St. Joseph Medical Center	0	0	0	9	20	0	9	0	2
	<i>Total: Baltimore County</i>	<i>0</i>	<i>0</i>	<i>5</i>	<i>21</i>	<i>85</i>	<i>0</i>	<i>26</i>	<i>20</i>	<i>8</i>
Carroll County	Carroll Hospital Center	0	0	2	0	5	0	0	15	2
Harford County	Upper Chesapeake Medical Center	0	0	2	0	9	0	0	14	2
Howard County	Howard County General Hospital	0	0	2	3	34	0	12	0	2
CENTRAL MARYLAND TOTAL		5	0	34	39	313	0	121	65	34
Cecil County	Union Hospital of Cecil County	0	0	0	0	8	0	0	7	1
Wicomico County	Peninsula Regional Medical Center	0	0	0	0	20	0	13	0	2
EASTERN SHORE TOTAL		0	0	3	0	28	0	19	17	4
MARYLAND TOTAL		8	0	51	81	656	1	246	105	63

Source: Maryland Health Care Commission

⁴ University of Maryland Shore Medical Center at Chestertown (formerly Chester River Hospital Center) closed its obstetrics service effective March 31, 2012, University of Maryland Medical Center Midtown Campus (formerly Maryland General Hospital) closed its obstetrics service effective June 30, 2013,

Newborn nursery bassinets at the 32 hospitals providing perinatal services are shown below in Table 22.

**Table 22. Newborn Nursery Bassinets:
Maryland Hospitals, FY 2013**

Jurisdiction/ Region	Hospital	Newborn Nursery	Premature Nursery	Neonatal Intensive Care	Total Bassinets
Allegany County	Western Maryland Regional Medical Center	20	0	0	20
Frederick County	Frederick Memorial Hospital	31	0	23	54
Garrett County	Garrett County Memorial Hospital	12	0	0	12
Washington County	Meritus Medical Center	41	0	0	41
WESTERN MARYLAND TOTAL		104	0	23	127
Montgomery County	Holy Cross Hospital of Silver Spring	113	0	46	159
	MedStar Montgomery Medical Center	18	0	0	18
	Shady Grove Adventist Hospital	48	0	31	79
	Washington Adventist Hospital	36	0	0	36
MONTGOMERY COUNTY TOTAL		215	0	77	292
Calvert County	Calvert Memorial Hospital	12	0	0	12
Charles County	Univ. of MD Charles Regional Medical Center	15	0	0	15
Prince George's County	Laurel Regional Hospital	9	0	0	9
	Prince George's Hospital Center	40	0	20	60
	MedStar Southern Maryland Hospital Center	16	8	0	24
	<i>Total: Prince George's County</i>	<i>92</i>	<i>8</i>	<i>20</i>	<i>120</i>
St. Mary's County	MedStar St. Mary's Hospital	16	0	0	16
SOUTHERN MARYLAND TOTAL		108	8	20	136
Anne Arundel County	Anne Arundel Medical Center	40	0	30	70
	Univ. of MD Baltimore Washington Medical Center	15	0	0	15
	<i>Total Anne Arundel County</i>	<i>55</i>	<i>0</i>	<i>30</i>	<i>85</i>
Baltimore City	Johns Hopkins Bayview Medical Center	20	0	25	45
	MedStar Harbor Hospital	44	0	0	44
	Mercy Medical Center, Inc.	40	0	26	66
	Sinai Hospital of Baltimore	35	0	21	56
	St. Agnes Healthcare	36	0	24	60
	The Johns Hopkins Hospital	25	0	45	70
	University of Maryland Medical Center	24	0	46	72
	<i>Total: Baltimore City</i>	<i>224</i>	<i>0</i>	<i>187</i>	<i>413</i>
Baltimore County	Greater Baltimore Medical Center, Inc.	60	0	30	90
	MedStar Franklin Square Hospital Center	35	0	22	57
	St. Joseph Medical Center	20	0	20	40
	<i>Total: Baltimore County</i>	<i>115</i>	<i>0</i>	<i>72</i>	<i>187</i>
Carroll County	Carroll Hospital Center	25	0	0	25
Harford County	Upper Chesapeake Medical Center	10	0	0	10
Howard County	Howard County General Hospital	30	0	18	48
CENTRAL MARYLAND TOTAL		459	0	307	768
Cecil County	Union Hospital of Cecil County	12	0	0	12
Talbot County	Univ. of MD Shore Medical Center at Easton	18	0	0	18
Wicomico County	Peninsula Regional Medical Center	18	0	10	28
EASTERN SHORE TOTAL		48	0	10	58
MARYLAND TOTAL		934	8	437	1,381

Source: Maryland Health Care Commission

Special Hospital Services, Comprehensive Care Facilities in the Hospital Setting, and Hospital-Based Psychiatric Inpatient Care

Special hospitals are facilities that have an organized medical staff of physicians and that include inpatient beds with medical services. The medical services include physician services and continuous registered professional nursing services, for not less than 24 hours every day, to provide diagnosis and treatment for patients who have specific medical conditions. In Maryland, special hospitals provide specialized rehabilitation, chronic care, pediatric and psychiatric services. Special hospital beds may be located on the campus of an acute general hospital. With the exception of acute care psychiatric beds, which are included as part of acute care licensed beds, special hospital beds are separately licensed from acute care beds. Special hospital beds are not included in the annual licensure process for acute care beds located in acute care general hospitals. Thus, there should be no difference between licensed bed inventories and physical bed capacity in the case of such beds.

Special Hospital Medical Rehabilitation Services

Acute inpatient rehabilitation is defined, at COMAR 10.24.09, as interdisciplinary care provided to persons with disabilities who are at high risk of potential medical instability, have a potential for needing skilled nursing care of a high medical acuity, and require a mix of services, service intensity levels, and settings of the following type:

- 1.Regular, direct individual contact by a physiatrist or physician of equivalent training and/or experience in rehabilitation who serves as their lead provider;
- 2.Daily rehabilitation nursing for multiple and/or complex needs;
- 3.A minimum of three hours of physical or occupational therapy per day, at least five days per week, in addition to therapies or services from a psychologist, a social worker, a speech-language pathologist, and a therapeutic recreation specialist, as determined by the individual's needs; or
- 4.Based on their individual needs, other services provided in a health care facility that is licensed as a hospital.

There are five (5) special hospitals licensed that provide medical rehabilitation services in Maryland and ten (10) Maryland acute care hospitals have special hospital units that provide medical rehabilitation services. Table 23 profiles the types of rehabilitation programs offered at these facilities, the number of licensed beds, and the number of licensed beds that are regularly staffed. Staffed beds are defined as the number of beds regularly maintained (set up and staffed for use) for inpatients. In this table, adult patients are defined as 18 years of age and older and pediatric patients are patients under the age of 18. The program listings are medical rehabilitation services that are accredited by the Commission on Accreditation of Rehabilitation Facilities (CARF). CARF is an independent nonprofit accrediting body of human service providers in the areas of aging services, behavioral health, child and youth services, durable medical equipment, prosthetics, orthotics and orthotic supplies, employment and community

services, medical rehabilitation, and opioid treatment programs. CARF accreditation is required by the State of Maryland for licensure of rehabilitation facilities.

Table 23. Inpatient Medical Rehabilitation Services by Region and Jurisdiction, June 1, 2013

Jurisdiction/ Region	Hospital	CARF Accredited Inpatient Medical Rehabilitation Programs Offered										Licensed Beds	Staffed Beds
		Comprehensive		Brain Injury		Spinal Cord		Stroke		Amputation			
		Adult	Pediatric	Adult	Pediatric	Adult	Pediatric	Adult	Pediatric	Adult	Pediatric		
Allegany County	Western Maryland Regional Medical Center	√		√				√				13	13
Washington County	Meritus Medical Center	√	√									20	20
<i>Western Maryland Total</i>											33	33	
Montgomery County	Adventist Rehabilitation Hospital of Maryland	√		√		√		√		√		77	77
<i>Montgomery County Total</i>											77	77	
Prince George's County	Laurel Regional Hospital	√						√				28	27
<i>Southern Maryland Total</i>											28	27	
	Univ. of MD Rehabilitation & Orthopaedic Institute	√	√	√	√	√	√	√				108	108
	Johns Hopkins Bayview Medical Center	√						√				9	9
	Kennedy Krieger Children's Hospital		√		√							31	31
	Levindale Hebrew Geriatric Center & Hospital	√										20	20
	MedStar Good Samaritan Hospital	√						√				51	51
	MedStar Union Memorial Hospital	√										18	10
	Mount Washington Pediatric Hospital		√									46	26
	Sinai Hospital of Baltimore	√		√				√				57	43
	The Johns Hopkins Hospital	√										14	14
<i>Central Maryland Total</i>											354	312	
Talbot County	Univ. of MD Shore Medical Center at Easton	√						√				20	14
Wicomico County	HealthSouth Chesapeake Rehabilitation Center	√										54	54
<i>Eastern Shore Total</i>											74	68	
MARYLAND TOTAL											566	517	

Source: Maryland Health Care Commission and Commission on Accreditation of Rehabilitation Facilities (CARF) 9/9/2013.

Notes: 1. Licensed Beds for Adventist Rehabilitation Hospital of Maryland at Takoma Park are included in Adventist Rehabilitation of Maryland. 2. University of Maryland Rehabilitation & Orthopaedic Institute (formerly James Lawrence Kernan Hospital) staffed beds include 16 dually licensed rehabilitation/chronic beds.

Other Special Hospital Services (non-psychiatric)

Pediatric

Facilities with beds licensed as Special Hospital – Pediatric are used to provide specialized inpatient services to patients less than 18 years of age. There are two special hospitals in Maryland dedicated to providing specialized pediatric services. Both hospitals provide rehabilitation and other special hospital services and are located in Baltimore City. (See Table 24).

Chronic Care

Facilities with beds licensed as Special Hospital-Chronic provide continuous and intensive medical, nursing, and ancillary services to medically-complex patients with severe illness who require close professional monitoring and observation and frequent medical interventions, either after an acute hospital phase of care or as a result of acute exacerbations of illness while residing in other settings, such as the patient's home or a nursing home (comprehensive care facility).

There are three special hospitals—chronic operating in Maryland. (See Table 24.) University Specialty Hospital operated in Baltimore City with 180 chronic beds, as part of the University of Maryland Medical System, until March 31, 2012. Coincident with its closure, 92 of its chronic special hospital beds were transferred to two other University of Maryland Medical System hospitals; University of Maryland Midtown Campus (formerly Maryland General Hospital) began operation of an 80-bed special hospital-chronic unit in 2012 and the remaining 12 special

hospital-chronic beds were transferred to the University of Maryland Rehabilitation & Orthopaedic Institute (formerly James Lawrence Kernan Hospital).

The three remaining special hospital-chronic facilities in Maryland, ranging in size from 62 to 100 beds, are currently licensed to operate 228 beds but only 150 are reported to be regularly staffed. One chronic hospital is private, and two are state-operated. The private chronic special hospital is located in the Central Maryland region. The two state operated chronic hospitals are each located in the less densely populated Health Planning Regions of Western Maryland and the Eastern Shore. Four acute care general hospitals, three located in Baltimore City and one in Prince George's County (the Southern Maryland region) provide chronic special hospital services. The three Central Maryland Hospitals have a total of 192 licensed chronic care beds located on their campuses, with 172 reported to be staffed.

Chronic beds operated on an acute care hospital campus are licensed separately and are not part of the annual acute care bed licensure process.

Table 24. Licensed Special Hospitals and their Special Hospital (Non-Psychiatric and Non-Rehabilitation) Beds: Maryland, June 1, 2013

Jurisdiction/ Region	Specialty Hospitals	Pediatric		Chronic	
		Licensed	Staffed	Licensed	Staffed
Washington County	Western Maryland Center	-	-	60	30
Western Maryland Total		-	-	60	30
Baltimore City	Kennedy Krieger Children's	39	39	-	-
	Levindale Hebrew Geriatric	-	-	100	100
	Mount Washington Pediatric	56	40	-	-
Central Maryland Total		95	79	100	100
Wicomico County	Deer's Head Center	-	-	66	20
Eastern Shore Total		-	-	66	20
Maryland Total		95	79	226	150

Source: Maryland Health Care Commission, Office of Health Care Quality, DHMH, Hospital Management System

Table 25. Licensed Special Hospital (Non-Psychiatric and Non-Rehabilitation) Beds: Located on Acute Care Hospital Campuses, Maryland, June 1, 2013

Jurisdiction/ Region	Acute Care Hospitals	Chronic		Dual Rehabilitation/ Chronic		Pediatric Specialty	
		Licensed	Staffed	Licensed	Staffed	Licensed	Staffed
Baltimore City/Central Maryland	Univ. of MD Rehabilitation & Orthopaedic Institute	36	36	16	16	-	-
Baltimore City/Central Maryland	Johns Hopkins Bayview Medical Center	76	76	-	-	-	-
Baltimore City/Central Maryland	Univ. of MD Medical Center Midtown Campus	80	60	-	-	-	-
Prince George's/Southern Maryland	Mt. Washington Pediatric Hosp. at Prince George's Hosp.	-	-	-	-	15	12
Prince George's/Southern Maryland	Laurel Regional Hospital	46	38	-	-	-	-
Maryland State Total		238	210	16	16	15	12

Source: Maryland Health Care Commission; Office of Health Care Quality. *Univ. of MD Rehabilitation & Orthopaedic Institute (formerly James Lawrence Kernan Hospital) staffed chronic beds exceed licensed beds through use of dually licensed Rehabilitation/Chronic Care beds.

Comprehensive Care Facility (Nursing Home) Beds in the Hospital Setting

Comprehensive care facilities (“CCFs”) are licensed in accordance with COMAR 10.07.02. These facilities admit patients suffering from disease or disabilities, or advanced age, requiring medical service and nursing service rendered by or under the supervision of a registered nurse. The vast bulk of CCF services are provided in Maryland through freestanding (non-hospital) CCFs, commonly known as nursing homes. Only 2.8% of the state’s total CCF beds are located in general or special hospital settings. However, this type of inpatient facility service is also offered by nine acute care general hospitals (Table 26) and by three facilities that combine comprehensive care facility services (Table 27) with chronic care services (Table 24). CCF beds in general hospitals are primarily used to provide short-term rehabilitative services to Medicare patients. In contrast, most of the state’s CCF beds are used to provide longer-term chronic and custodial care.

Table 26. Licensed Comprehensive Care Facility Beds at Acute Care Hospitals, Maryland, June 1, 2013

Jurisdiction/ Region	Hospital	Licensed Comprehensive Care Facility Beds	Staffed Beds
Garrett County	Garrett County Memorial Hospital	10	10
<i>Western Maryland Total</i>		10	10
Calvert County	Calvert Memorial Hospital	18	16
Prince George's County	MedStar Southern Maryland Hospital Center	24	24
<i>Southern Maryland Total</i>		42	40
Baltimore City	Johns Hopkins Bayview Medical Center	80	53
	MedStar Good Samaritan Hospital	30	30
	Mercy Medical Center	29	29
Baltimore County	Greater Baltimore Medical Center	25	25
	Northwest Hospital Center	39	29
<i>Central Maryland Total</i>		203	166
Wicomico County	Peninsula Regional Medical Center	30	30
<i>Eastern Shore Total</i>		30	30
<i>Maryland Total - Acute Care Hospitals</i>		285	246

Source: Maryland Health Care Commission, Office of Health Care Quality

**Table 27. Licensed Comprehensive Care Facility Beds at Special Hospitals
June 1, 2013**

Jurisdiction/ Region	Hospital	Licensed Comprehensive Care Facility Beds	Staffed Beds
Wicomico County/ Eastern Shore	Deer's Head Center	80	60
Baltimore City/ Central Maryland	Levindale Hebrew Geriatric Center & Hospital	210	210
Washington County/ Western Maryland	Western Maryland Center	63	44
<i>Maryland State Total</i>		353	314

Source: Maryland Health Care Commission, Office of Health Care Quality, DHMH, Hospital Management System

Psychiatric Hospital Facilities and Services

In Maryland, two types of hospital-level inpatient psychiatric services are provided; acute psychiatric services and longer-term, continuing care. Most acute inpatient psychiatric care is provided within the acute care general hospital setting at 28 acute care general hospitals. These psychiatric beds are included in the annual “dynamic” licensure process for all acute care beds located in acute care general hospitals in which the licensed acute care bed inventory is based on recorded average daily census. Hospital-level psychiatric inpatient care outside of the acute care general hospital setting can be found in freestanding private hospitals or in state hospitals. The psychiatric beds in these two facility types are licensed as a category of “special hospital” beds under the State’s licensing statute. Freestanding private psychiatric hospitals primarily provide acute psychiatric inpatient services. State psychiatric hospitals primarily provide long-term, continuing care psychiatric inpatient services.

Table 28 provides an overview of the acute psychiatric inpatient service bed capacity and program characteristics of general acute care hospitals. In general, services for children are provided to a patient population under the age of 13 years, adolescent services are provided to patients aged 13 to 17, and adult services are provided to patients aged 18 years and older.

**Table 28. Inpatient Acute Psychiatric Services Available at General Acute Care Hospitals:
Maryland, FY 2014**

Jurisdiction/ Region		Designated FY 2014 Licensed	Acute Adult	Acute Child	Acute Adolescent	Acute Geriatric	Accept Involuntary Patients
Allegany County	Western Maryland Regional Medical Center	19	√			√	√
Frederick County	Frederick Memorial Hospital	21	√			√	√
	Meritus Medical Center	18	√			√	√
Western Maryland Total		58					
Montgomery County	MedStar Montgomery Medical Center	25	√				No
	Suburban Hospital	24			√	√	No
	Washington Adventist Hospital	40	√				√
Montgomery County Total		89					
Calvert County	Calvert Memorial Hospital	11	√				√
Prince George's County	Laurel Regional Hospital	14	√				No
	Prince George's Hospital Center	28	√				√
St. Mary's County	MedStar Southern Maryland Hospital Center	25	√			√	√
	MedStar St. Mary's Hospital	12	√				√
Southern Maryland Total		90					
Anne Arundel County	Univ. of MD Baltimore Washington Medical Center	14	√				√
Baltimore City	Bon Secours Hospital	32	√				√
	Johns Hopkins Bayview Medical Center	20	√				No
	MedStar Union Memorial Hospital	26	√				√
	Sinai Hospital of Baltimore	24	√			√	√
	The Johns Hopkins Hospital	108	√	√			√
	University of Maryland Medical Center	56	√	√		√	√
	Univ. of MD Medical Center Midtown Campus	28	√				√
Baltimore County	MedStar Franklin Square Hospital	24	√		√		√
	Northwest Hospital	23	√			√	√
	University of Maryland St. Joseph Hospital	19	√			√	No
Carroll County	Carroll Hospital Center	20	√		√	√	
Harford County	Harford Memorial Hospital	28	√			√	
Howard County	Howard County General Hospital	22	√			√	
Central Maryland Total		444					
Cecil County	Union Hospital of Cecil County	7	√			√	√
Dorchester County	University of MD Shore Medical Center at Dorchester	16	√				√
Wicomico County	Peninsula Regional Medical Center	10	√				√
Eastern Shore Total		33					
Maryland State Total		714					

Source: Maryland Health Care Commission survey of psychiatric services capacity, June, 2013.

Note: Services may be provided in combined units

Tables 29 and 30 profile psychiatric inpatient service capacity and inpatient program characteristics at Special Hospitals – Psychiatric. Table 29 identifies the licensed bed capacity and the number of reported regularly staffed beds at Maryland’s five freestanding private psychiatric hospitals. Table 30 identifies the number of licensed beds and “budgeted” beds, at Maryland’s five state-operated psychiatric hospitals. The number of “budgeted” beds provides a more accurate reflection of the bed capacity that is typically set up and staffed at these facilities than the number of licensed beds.

**Table 29. Inpatient Services Available at Private Special Hospitals - Psychiatric:
Maryland, June 1, 2013**

Jurisdiction/ Region	Special Hospital Name	Licensed Capacity	Staffed Beds	Acute Adult	Acute Child	Acute Adolescent	Acute Geriatric	Accept Involuntary Patients
Washington County	Brook Lane Health Services	65	43	√	√	√		√
Western Maryland Total		65	43					
Montgomery County	Adventist Behavioral Health Rockville	107	106	√	√	√		√
Montgomery County Total		107	106					
Baltimore County	Sheppard and Enoch Pratt Hospital	322	255	√	√	√	√	√
Howard County	Sheppard Pratt at Ellicott City	92	78	√		√		√
Central Maryland Total		414	333					
Dorchester County	Adventist Behavioral Health Eastern Shore	15	15		√	√		
Eastern Shore Total		15	15					
Maryland State Total		601	497					

Source: Maryland Health Care Commission Survey: Special Hospitals - Psychiatric, June 1, 2013

**Table 30. Inpatient Psychiatric Services Provided at State Special Hospitals - Psychiatric
Maryland, June 1, 2013**

Jurisdiction/ Region	Special Hospital Name	Licensed Psychiatric Beds	Budgeted Psychiatric Beds	Acute Adult	Acute Child	Acute Adolescent	Acute Geriatric	Acute Forensic	Accept Involuntary Patients
Allegany County	Thomas B. Finan Center	88	44					√	√
Western Maryland Total		88	44						
Baltimore County	Spring Grove Hospital Center	639	375	√		√	√	√	√
Carroll County	Springfield Hospital Center	522	249	√			√		√
Howard County	Clifton T. Perkins Hospital Center	250	242					√	√
Central Maryland Total		1,411	866						
Dorchester County	Eastern Shore Hospital Center	60	60	√			√	√	√
Eastern Shore Total		60	60						
Maryland State Total		1,559	970						

Source: Maryland Health Care Commission Survey: Special Hospitals - Psychiatric, June 1, 2013. DHMH, Hospital Management Information System. Licensed and budgeted bed totals include both acute and continuing care psychiatric beds.

Partial Hospitalization Programs (PHP) and Intensive Outpatient Programs (IOP) for psychiatric patients are also provided in the acute care general hospital setting and the special hospital- psychiatric setting. PHPs and IOPs are organized day or night programs providing assessment, treatment, habilitation, or rehabilitation services for persons who do not require psychiatric inpatient care on a 24-hour basis. This may be a structured, ongoing program that the patient typically attends two to five times a week for two to five hours per day providing clinical behavioral health services. The plan of care is prescribed by and overseen by a psychiatrist. PHPs may be used as a “step-down” from inpatient care or a “step-up” from less intensive outpatient programming and are sometimes called “day hospital” programs. Services are usually provided in a group setting for at least four hours of direct clinical care per day, with additional individual and/or family therapy and medication management as needed. IOPs are a subset of PHPs and would typically involve fewer sessions per week and/or fewer hours per daily session. IOPs may be used as a “step-down” from PHPs or a “step-up” from less intensive outpatient care outside of the institutional setting.

MHCC surveyed the availability of PHPs and IOPs at hospitals, requesting information on the maximum number of treatment “slots” available and the daily program census on four specific dates between September, 2012 and June, 2013. Tables 31 and 32 profile these programs as offered in 23 acute care general hospitals and five freestanding private psychiatric hospitals, respectively. State-operated psychiatric hospitals do not provide PHP or IOP services. [NOTE: Average daily census is the average number of patients based on patient census for four specific dates between September, 2012 and June, 2013, as reported by each hospital.]

Table 31. Partial Hospitalization and/or Intensive Outpatient Psychiatric Services at Acute Care Hospitals: Maryland, June 1, 2013

Jurisdiction/ Region	Acute Care General Hospital Name	Partial Hospitalization/ Intensive Outpatient Programs	Maximum Number of Slots Available	Average Patient Census: Partial Hospitalization / Intensive Outpatient Programs
Allegany County Frederick County	Western Maryland Regional Medical Center	√	12	10
	Frederick Memorial Hospital	√	15	16
	Meritus Medical Center	√	14	3
Western Maryland Total			41	
	MedStar Montgomery Medical Center	√	25	23
	Suburban Hospital	√	28	20
	Washington Adventist Hospital	√	45	19
Montgomery County Total			98	
Calvert County Prince George's County	Calvert Memorial Hospital	√	15	11
	Laurel Regional Hospital	√	15	12
	MedStar Southern Maryland Hospital Center	√	20	7
St. Mary's County	Prince George's Hospital Center	√	12	8
	MedStar St. Mary's Hospital	√	12	7
Southern Maryland Total			74	
Anne Arundel County Baltimore City Baltimore County	Univ. of MD Baltimore Washington Medical Ctr.	√	16	7
	Bon Secours Hospital	√	16	7
	Johns Hopkins Bayview Medical Center	√	100	71
	MedStar Union Memorial Hospital	√	22	22
	Sinai Hospital of Baltimore	√	20	10
	University of MD Medical Ctr. Midtown Campus	–	–	–
	The Johns Hopkins Hospital	√	32	18
	University of Maryland Medical Center	√	30	9
	MedStar Franklin Square Hospital	–	–	–
	Northwest Hospital	–	–	–
Carroll County	University of Maryland St. Joseph Hospital	√	25	10
	Carroll Hospital Center	√	35	13
Harford County	Harford Memorial Hospital	√	10	5
Howard County	Howard County General Hospital	–	–	–
Central Maryland Total			306	
Cecil County	Union Hospital of Cecil County	–	–	–
Dorchester County	Univ. of MD Shore Medical Center at Dorchester	√	16	7
Wicomico County	Peninsula Regional Medical Center	–	–	–
Eastern Shore Total			16	
Maryland State Total			535	

Source: Maryland Health Care Commission survey of psychiatric services capacity, June, 2013.

Table 32. Partial Hospitalization and/or Intensive Outpatient Services at Private Special Hospitals - Psychiatric: Maryland, June 1, 2013

Jurisdiction/Region	Special Hospital - Psychiatric	Partial Hospitalization/ Intensive Outpatient Programs	Maximum Slots Available: Partial Hospitalization/ Intensive Outpatient Programs	Average Daily Census
Washington County	Brook Lane Health Services	√	30	25
	<i>Western Maryland Total</i>		30	
Montgomery County	Adventist Behavioral Health - Rockville	√	40	28
	<i>Montgomery County Total</i>		40	
Baltimore County	Sheppard Pratt Hospital	√	150	96
Howard County	Sheppard Pratt at Ellicott City	√	20	16
	<i>Central Maryland Total</i>		170	
Dorchester County	Adventist Behavioral Health Eastern Shore	√	10	4
	<i>Eastern Shore Total</i>		10	
	<i>Maryland State Total</i>		250	

Source: Maryland Health Care Commission survey of psychiatric services capacity, June, 2013

The following tables profile psychiatric hospital bed capacity for the three types of hospital settings, across several bed capacity dimensions, including licensed beds, physical bed capacity, and staffed beds. They also provide recent patient day and bed occupancy rate information. In the case of the State psychiatric hospitals, total inpatient days are reported for FY 2012.

Table 33. Inventory and Utilization of Psychiatric Beds at General Acute Care Hospitals

Jurisdiction/Region	Acute Care General Hospitals	Licensed Beds Designated Psychiatric FY 2014	Beds, June 1, 2013		Patient Days CY 2012	Staffed Bed Occupancy CY2012
			Physical Bed Capacity	Staffed Beds		
Allegany County	Western Maryland Regional Medical Center	19	19	17	5,241	84%
Frederick County	Frederick Memorial Hospital	21	21	21	7,441	97%
	Meritus Medical Center	18	18	18	4,387	67%
Western Maryland Total		58	58	56	17,069	84%
Montgomery County	MedStar Montgomery Medical Center	25	33	25	5,282	58%
	Suburban Hospital	24	24	24	6,713	77%
	Washington Adventist Hospital	40	40	39	9,807	69%
Montgomery County Total		89	97	88	21,802	68%
Calvert County	Calvert Memorial Hospital	11	17	12	3,130	71%
Prince George's County	Laurel Regional Hospital	14	18	18	3,320	51%
	MedStar Southern Maryland Hospital Center	25	28	28	4,965	49%
	Prince George's Hospital Center	28	34	28	7,402	72%
St. Mary's County	MedStar St. Mary's Hospital	12	12	12	2,108	48%
Southern Maryland Total		90	109	98	20,925	58%
Anne Arundel County	University of Maryland Baltimore Washington Medical Center	14	14	14	5,447	107%
Baltimore City	Bon Secours Hospital	32	32	25	9,188	101%
	Johns Hopkins Bayview Medical Center	20	20	20	6,617	91%
	MedStar Union Memorial Hospital	26	26	26	8,449	89%
	Sinai Hospital of Baltimore	24	24	24	8,802	100%
	The Johns Hopkins Hospital	108	108	100	32,424	89%
	University of Maryland Medical Center	56	56	56	15,852	78%
Baltimore County	University of Maryland Medical Center Midtown Campus	28	28	28	9,378	92%
	MedStar Franklin Square Hospital	24	24	24	6,838	78%
	Northwest Hospital	23	23	23	5,129	61%
	University of Maryland St. Joseph Medical Center	19	19	19	5,859	84%
	Carroll County	Carroll Hospital Center	20	20	16	4,669
Harford County	Harford Memorial Hospital	28	27	27	6,928	70%
Howard County	Howard County General Hospital	22	20	20	5,561	76%
Central Maryland Total		444	441	422	131,141	85%
Cecil County	Union Hospital of Cecil County	7	9	6	2,496	114%
Dorchester County	University of Maryland Shore Medical Center at Dorchester	16	24	16	3,377	58%
Wicomico County	Peninsula Regional Medical Center	10	10	10	3,956	108%
	Eastern Shore Total	33	43	32	9,829	84%
Maryland State Total		714	748	696	200,766	79%

Sources: Licensed beds designated as psychiatric, Maryland Health Care Commission and Office of Health Care Quality, Acute General Hospital Licensed Bed Designation, FY 2014. Physical capacity and staffed beds, MHCC Supplemental Survey: Psychiatric Services Capacity, June 1, 2013. Patient Days, Health Services Cost Review Commission, Discharge Abstract, CY 2012. Staffed bed occupancy is calculated using the following formula [patient days ÷ 365] ÷ staffed bed inventory.

Table 34. Inventory and Utilization of Acute Psychiatric Beds at Private Psychiatric Hospitals: Maryland, 2013

Jurisdiction/Region	Private Special Hospital - Psychiatric	Beds, June 1, 2013			Patient Days CY2012	Staffed Bed Occupancy CY2012
		Licensed Beds	Physical Bed Capacity	Staffed Beds		
Washington County/ Western Maryland	Brook Lane Health Services	65	43	43	15,538	99%
Montgomery County/ Montgomery	Adventist Behavioral Health - Rockville	107	106	106	39,434	89%
Dorchester County/ Eastern Shore	Adventist Behavioral Health - Eastern Shore	15	15	15		
Baltimore County/ Central Maryland	Sheppard Pratt Hospital	322	322	255	105,520	87%
Howard County/ Central Maryland	Sheppard Pratt at Ellicott City	92	92	78		

Sources: Licensed Beds, Office of Health Care Quality; Physical Capacity and Staffed Beds, Maryland Health Care Commission June, 2013 Survey; Psychiatric Service Capacity; Patient Days, Health Services Cost Review Commission, Discharge Database, CY2012.

Staffed bed occupancy is calculated using the following formula $[\text{patient days} \div 365] \div \text{staffed bed inventory}$.

Sheppard Pratt and Adventist Behavioral Health combine their sites' patient data when reporting to HSCRC.

Note: The number of staffed beds may fluctuate during the course of the surveyed year.

Table 35. Inventory and Utilization of Psychiatric Beds at State Psychiatric Hospitals: Maryland, 2013

Jurisdiction/Region	State Psychiatric Special Hospitals	Beds, June 1, 2013						Patient Days FY 2012	Staffed Bed Occupancy FY 2012
		Licensed Beds	State Budgeted Beds	Physical Bed Capacity		Staffed Beds			
				Acute Care	Continuing Care	Acute Care	Continuing Care		
Allegany County	Thomas B. Finan Center	88	66	66	22	44	22	24,453	102%
Western Maryland Total		88	66	66	22	44	22	24,453	102%
Baltimore County	Spring Grove Hospital Center	639	366	148	335	109	266	147,451	108%
Carroll County	Springfield Hospital Center	522	235	98	151	98	151	85,000	94%
Howard County	Clifton T. Perkins Hospital Center	250	238	19	251	19	221	87,610	100%
Central Maryland Total		1,411	839	265	737	226	638	320,061	101%
Dorchester County	Eastern Shore Hospital Center	80	60	60	0	60	0	20,846	95%
Eastern Shore Total		80	60	60	0	60	0	20,846	95%
Maryland State Total		1,579	965	391	759	330	660	365,360	101%

Source: Staffed beds and physical bed capacity: Maryland Health Care Commission Survey: Special Hospitals - Psychiatric, June 1, 2013; Licensed bed inventory, Office of Health Care Quality, DHMH; budgeted beds, patient days, Hospital Management Information System.

Staffed bed occupancy is calculated using the following formula $[\text{patient days} \div 365] \div \text{staffed bed inventory}$.

Note: The number of staffed beds may fluctuate during the course of the surveyed year.



4160 Patterson Avenue
Baltimore, Maryland 21215
Telephone: (410) 764-3460
FAX: (410) 358-1236
Toll Free: 1 (877) 245-1762
TDD: 1 (800) 735-2258
<http://mhcc.maryland.gov>