

Annual Report on Selected Maryland General and Special Hospital Services

Fiscal Year **2016**

Effective July 1, 2015



Annual Report on Selected Maryland General and Special Hospital Services

Fiscal Year **2016**



Center for Health Care Facilities
Planning & Development

Table of Contents

	Page
Background.....	1
Acute Care Hospital Bed Capacity	1
Licensed Acute Care Hospital Beds in Maryland: FY 2016	2
Demand for Hospital Beds in Maryland Compared with Regional and National Trends.....	8
Critical Care Beds.....	12
Monitored Beds.....	14
Hospital System Affiliation.....	16
Total Available Acute Care Bed Capacity.....	19
Observation Services	21
Emergency Department/Freestanding Medical Facility Treatment Capacity.....	23
Hospital Surgical Services Capacity.....	27
Obstetric and Perinatal Services Capacity	30
Special Hospital Services, Comprehensive Care Facilities in the Hospital Setting, and Hospital-Based Psychiatric Care	33
Special Hospital Medical Rehabilitation Services	33
Other Special Hospital Services (non-psychiatric).....	34
Comprehensive Care Beds in the Hospital Setting.....	36
Psychiatric Hospital Facilities and Services.....	37

Tables and Charts

Tables:

1	Licensed Acute Care Beds by Hospital and Service: Maryland, FY 2016	3
2	Trend in Licensed Acute Care Beds by Hospital: Maryland, FY 2007 - 2016	4

3	Percent Change in Total Licensed Acute Care Hospital Beds, by Maryland Region: FY 2007 – 2016.....	5
4	Change in Number of Total Licensed Acute Care Beds by Region: Maryland Hospitals, FY 2015 - 2016.....	7
5	Allocation of Licensed Acute Care Beds by Service: Maryland Hospitals, FY 2007 - 2016	8
6	Allocation of Licensed Acute Care Beds by Service (Percentage), Maryland Hospitals, FY 2007 – FY2016	8
7	Proportion of Total Population Aged 65 and Older, South Atlantic Census Region States, 2013.....	9
8	Critical Care Bed Inventory: Maryland Hospitals, FY 2016.....	13
9	Licensed Acute Care Beds with Monitoring Capability: Maryland Hospitals, FY 2016.....	15
10	Trend in Licensed Acute Care Beds by System Affiliation: Maryland Hospitals, FY 2007 – 2016.....	17
11	Multihospital Systems and Hospitals and Beds by System Status in Maryland, F Y 2009 – 2016.....	18
12	Total Available Physical Acute Care Bed Capacity Reported by Maryland Hospitals, June 1, 2015	20
13	Maryland Acute Care General Hospital Observation (OBV) Services, June 1, 2015.....	22
14	Summary – Acute Care Hospital Observation Beds, June 1, 2015	23
15	Change in Emergency Department/Freestanding Medical Facility Treatment Capacity: Maryland, 2014 – 2015.....	24
16	Inventory of Emergency Department/Freestanding Medical Facility Treatment Capacity: Maryland Hospitals: June 1, 2015	25
17	Trends in Emergency Department/Freestanding Medical Facility Treatment Capacity: Maryland Hospitals, June 1, 2008 – June 1, 2015.....	26
18	Surgical Services Capacity by Hospital and Room Use: Maryland Hospitals, June 1, 2015.....	28
19	Dedicated Cesarean Section Operating Rooms and Procedure Rooms by Hospital: Maryland Hospitals, June 1, 2015.....	29
20	Trends in Number of Surgical Rooms: Maryland Hospitals, 2013 – 2015.....	30

21	Obstetric Service Capacity: Maryland Hospitals, June 1, 2015.....	31
22	Newborn Nursery Bassinets, Maryland Hospitals, FY 2015.....	32
23	Inpatient Medical Rehabilitation Facilities and Services by Region and Jurisdiction, June 1, 2015.....	34
24	Licensed Special Hospital and their Special Hospital (Non-Psychiatric and Non- Rehabilitation) Beds, Maryland, June 1, 2015.....	35
25	Licensed Special Hospitals (Non-Psychiatric and Non-Rehabilitation) Beds, Located on Acute Care Hospital Campuses: Maryland, June 1, 2015.....	35
26	Licensed Comprehensive Care Beds at Acute Care Hospitals: Maryland, June 1, 2015.....	36
27	Licensed Comprehensive Care Beds at Special Hospitals: June 1, 2015.....	37
28	Inpatient Acute Psychiatric Services Available at General Acute Care Hospitals, Maryland, FY 2015.....	38
29	Inpatient Psychiatric Services Available at Private Special Hospitals – Psychiatric, Maryland, June 1, 2015.....	39
30	Inpatient Psychiatric Services Provided at State Special Hospitals – Psychiatric, Maryland, June 1, 2015.....	39
31	Partial Hospitalization and/or Intensive Outpatient Psychiatric Services at General Hospitals Providing Inpatient Psychiatric Services, June 1, 2015.....	41
32	Partial Hospitalization and/or Intensive Outpatient Services at Private Special Hospitals, Psychiatric: June 1, 2015.....	42
33	Inventory and Utilization of Psychiatric Beds at General Acute Care Hospitals, Maryland, 2015.....	43
34	Inventory and Utilization of Psychiatric Beds at Private Psychiatric Hospitals: Maryland, 2015.....	44
35	Inventory and Utilization of Psychiatric Beds at State Psychiatric Hospitals: Maryland, 2015.....	44

Charts:

1	Year to Year Change in Total Licensed Acute Care Beds: Maryland Hospitals, FY 2007 – FY 2016.....	5
2	Total Licensed Acute Care Beds: Maryland Hospitals, FY 2007 – 2016.....	6
3	Trend in Average Daily Acute Care Patient Census: Maryland Hospitals, CY 1980 – 2014.....	6

3 Hospital Admissions per 1,000 Population, All Hospital Unit Admissions (Excludes NH Unit Admissions) South Atlantic Census Region States 2006 – 2013.....9

4 Hospital Average Length of Stay, All Hospital Unit Admissions (Excludes NH Unit Admissions) South Atlantic Census Region States 2006 – 2013 10

5 Hospital Admissions per 1,000 Population, All Hospital Unit Admissions (Excludes NH Unit Admissions) U.S. and Maryland, 1994 – 2013..... 11

6 Hospital Average Length of Stay, All Hospital Unit Admissions (Excludes NH Unit Admissions) U.S. and Maryland, 1994 – 2013 12

7 Comparison of Multihospital Systems and Non-Multihospital System Hospitals, Maryland, FY 2007 - FY2016..... 18

9 Change in Number of Emergency Treatment Spaces by Type of Space: Maryland, 2007 – 2014.....27

Annual Report on Selected Maryland General and Special Hospital Services: Fiscal Year 2016

Background

An Annual Report profiling changes in licensed acute care hospital beds in Maryland's general hospitals was initiated in 2001 to document and track changes in the licensed bed inventory following implementation of a standardized annual licensure renewal process based on acute inpatient census. The process involves notifying general hospitals prior to the beginning of each fiscal year concerning the calculated total number of licensed acute care beds for the coming fiscal year. In turn, the hospitals identify the allocation of the total licensed acute care beds across four service categories: medical/surgical/gynecological/addictions ("MSGA"); obstetric, pediatric, and acute psychiatric services. Over time, additional information on hospital service capacity, covering emergency department services, surgical services, obstetric and perinatal services, and non-acute care bed capacity have been added to the survey undertaken to update acute care bed licensure.

Acute Care Hospital Bed Capacity

Licensed bed capacity for acute care beds in general hospitals in the State of Maryland is dynamic, calculated annually based on average daily acute care inpatient census. The Maryland Health Care Commission, in conjunction with the Health Services Cost Review Commission, calculates the average daily census (ADC) of acute care patients for each hospital for the 12-month period ending with the first quarter of each year and total licensed acute care bed capacity is established for the next fiscal year at 140% of the hospital's average daily census. This licensure approach reflects an assumption that an average annual occupancy rate of approximately 71% for acute care hospital beds is an appropriate bench-mark for determining the maximum number of acute care beds a general hospital needs to operate.

The initial implementation of this licensure process in FY 2001 resulted in a total of 9,562 licensed acute care beds, removing 2,773 beds from the licensure rolls. Total licensed acute care bed capacity increased, in response to increases in average daily patient census each year after the initial reduction in 2001, peaking at 10,880 beds in FY 2011. The total number of licensed acute care hospital beds in Maryland has declined in every following year, declining to 9,800 beds in the current fiscal year. Thus, Maryland experienced a 13.8% increase in the average daily census of acute care patients between 2000 and 2010 and has experienced a 9.9% decline in acute care ADC between 2010 and 2015.

NOTES

A new general hospital, Holy Cross Germantown Hospital, a 93 bed hospital located in Montgomery County, opened in October 2014.

Two hospitals in the Adventist HealthCare System changed their names as listed below.

Previous Name	Current Name
Shady Grove Adventist Hospital	Adventist HealthCare Shady Grove Medical Center
Washington Adventist Hospital	Adventist HealthCare Washington Adventist Hospital

Licensed Acute Care Hospital Beds in Maryland: FY 2016

Table 1 shows the licensed acute care bed capacity for each general hospital, by service, effective July 1, 2015. The calculation of licensed beds for FY 2016, based on each hospital's ADC during the period April 1, 2014 through March 31, 2015, results in a total of 9,800 licensed acute care hospital beds in Maryland. Table 2 shows the ten-year trend in licensed acute care beds by hospital. Table 3 shows the percent change by region.

Table 1. Licensed Acute Care Beds by Hospital and Service: Maryland, FY 2016

Jurisdiction/ Region	Hospital	Acute Care Services				
		MSGA	Obstetric	Pediatric	Psychiatric	Total
Allegheny County	Western Maryland Regional Medical Center	166	10	2	17	195
Frederick County	Frederick Memorial Hospital	180	27	5	21	233
Garrett County	Garrett County Memorial Hospital	22	2	1	0	25
Washington County	Meritus Medical Center	186	17	4	16	223
WESTERN MARYLAND TOTAL		554	56	12	54	676
Montgomery County	Adventist HealthCare Shady Grove Medical Center	209	56	25	0	290
	Adventist HealthCare Washington Adventist Hospital	169	21	0	40	230
	Holy Cross Germantown Hospital*	75	12	0	6	93
	Holy Cross Hospital**	321	84	18	0	423
	MedStar Montgomery Medical Center	89	11	2	20	122
	Suburban Hospital	209	0	3	24	236
MONTGOMERY COUNTY TOTAL		1,072	184	48	90	1,394
Calvert County	Calvert Memorial Hospital	61	6	1	9	77
Charles County	University of Maryland Charles Regional Medical Center	94	12	4	0	110
Prince George's County	Doctors Community Hospital	163	0	0	0	163
	Fort Washington Medical Center	34	0	0	0	34
	Laurel Regional Hospital	46	5	0	9	60
	MedStar Southern Maryland Hospital Center	149	30	4	25	208
	Prince George's Hospital Center	169	38	2	28	237
	<i>Total: Prince George's County</i>	<i>561</i>	<i>73</i>	<i>6</i>	<i>62</i>	<i>702</i>
St. Mary's County	MedStar St. Mary's Hospital	61	12	6	12	91
SOUTHERN MARYLAND TOTAL		777	103	17	83	980
Anne Arundel County	Anne Arundel Medical Center	307	60	8	0	375
	University of Maryland Baltimore Washington Medical Center	264	15	10	14	303
	<i>Total: Anne Arundel County</i>	<i>571</i>	<i>75</i>	<i>18</i>	<i>14</i>	<i>678</i>
Baltimore City	Bon Secours Hospital	48	0	0	24	72
	Johns Hopkins Bayview Medical Center	294	22	5	20	341
	MedStar Good Samaritan Hospital	165	0	0	0	165
	MedStar Harbor Hospital	84	24	5	0	113
	MedStar Union Memorial Hospital	183	0	2	26	211
	Mercy Medical Center	147	32	5	0	184
	Sinai Hospital of Baltimore	315	27	26	24	392
	St. Agnes Hospital	226	20	5	0	251
	The Johns Hopkins Hospital	846	35	140	108	1,129
	University of Maryland Medical Center	628	30	58	56	772
	University of Maryland Medical Center Midtown Campus	79	0	0	28	107
	University of Maryland Rehabilitation and Orthopaedics Institute	7	0	0	0	7
	<i>Total: Baltimore City</i>	<i>3,022</i>	<i>190</i>	<i>246</i>	<i>286</i>	<i>3,744</i>
Baltimore County	Greater Baltimore Medical Center	163	60	8	0	231
	MedStar Franklin Square Hospital	278	37	9	40	364
	Northwest Hospital Center	176	0	0	23	199
	University of Maryland St. Joseph Medical Center	204	20	4	19	247
	<i>Total: Baltimore County</i>	<i>821</i>	<i>117</i>	<i>21</i>	<i>82</i>	<i>1,041</i>
Carroll County	Carroll Hospital Center	93	20	7	20	140
Harford County	University of Maryland Harford Memorial Hospital	58	0	0	26	84
	University of Maryland Upper Chesapeake Medical Center	167	11	2	0	180
	<i>Total: Harford County</i>	<i>225</i>	<i>11</i>	<i>2</i>	<i>26</i>	<i>264</i>
Howard County	Howard County General Hospital	206	34	6	20	266
CENTRAL MARYLAND TOTAL		4,938	447	300	448	6,133
Cecil County	Union Hospital of Cecil County	66	5	2	11	84
Dorchester County	University of Maryland Shore Medical Center at Dorchester	23	0	0	24	47
Kent County	University of Maryland Shore Medical Center at Chestertown	29	0	1	0	30
Somerset County	Edward W. McCready Memorial Hospital	4	0	0	0	4
Talbot County	University of Maryland Shore Medical Center at Easton	87	17	8	0	112
Wicomico County	Peninsula Regional Medical Center	252	20	8	12	292
Worcester County	Atlantic General Hospital	48	0	0	0	48
EASTERN SHORE TOTAL		509	42	19	47	617
MARYLAND TOTAL		7,850	832	396	722	9,800

Source: Maryland Health Care Commission, Acute Care Hospital Inventory (ACHI) FY2016.

*Holy Cross Germantown Hospital opened in October, 2014. Thus, it has not yet operated for the twelve-month period necessary to calculate a licensed bed total derived from an annual average daily census. For this reason, the full physical bed complement is shown here.

Holy Cross Hospital's bed distribution reflects changes implemented with the opening of the South Tower effective November 1, 2015.

Table 2. Trend in Licensed Acute Care Beds by Hospital: Maryland, FY 2007 - 2016

Jurisdiction/Region	Hospital	2007	2008	2009	2010	2011	2012	2013	2014	2015	2016
Allegany County	Braddock Hospital	148	155	154	-	-	-	-	-	-	-
	Memorial Hosp. & Med. Ctr. of Cumberland	120	109	117	-	-	-	-	-	-	-
	Western Maryland Regional Medical Center	-	-	-	262	252	250	234	200	192	195
	<i>Total: Allegany County</i>	268	264	271	262	252	250	234	200	192	195
Frederick County	Frederick Memorial Hospital	227	246	269	274	276	309	298	297	258	233
Garrett County	Garrett County Memorial Hospital	31	34	36	33	31	30	29	26	23	25
Washington County	Meritus Medical Center	243	264	258	260	258	252	245	237	231	223
WESTERN MARYLAND TOTAL		769	808	834	829	817	841	806	760	704	676
Montgomery County	Adventist HealthCare Shady Grove Medical Center	268	275	293	320	336	339	331	312	305	290
	Adventist HealthCare Washington Adventist Hospital	285	294	292	288	281	271	252	252	232	230
	Holy Cross Germantown Hospital*	-	-	-	-	-	-	-	-	-	93
	Holy Cross Hospital	379	404	408	404	402	409	396	397	391	423
	MedStar Montgomery General Hospital	144	149	165	170	159	158	138	132	120	122
	Suburban Hospital	212	228	238	239	222	233	229	236	220	236
MONTGOMERY COUNTY TOTAL		1,288	1,350	1,396	1,421	1,400	1,410	1,346	1,329	1,268	1,394
Calvert County	Calvert Memorial Hospital	107	105	106	98	98	95	95	92	85	77
Charles County	Univ. of MD Charles Regional Medical Center	109	121	129	120	120	124	110	121	115	110
Prince George's County	Doctors Community Hospital	186	192	195	190	195	219	207	198	182	163
	Fort Washington Medical Center	42	42	43	43	42	41	31	33	31	34
	Laurel Regional Hospital	96	95	97	95	87	83	77	78	74	60
	MedStar Southern Maryland Hospital Center	257	258	255	246	235	238	239	227	207	208
	Prince George's Hospital Center	268	264	246	254	244	242	224	214	215	237
	<i>Total: Prince George's County</i>	849	851	836	828	803	823	778	750	709	889
St. Mary's County	MedStar St. Mary's Hospital	105	108	108	103	96	90	90	89	82	91
SOUTHERN MARYLAND TOTAL		1,170	1,185	1,179	1,149	1,117	1,132	1,073	1,052	991	980
Anne Arundel County	Anne Arundel Medical Center	265	278	301	316	324	336	380	385	384	375
	Univ. of MD Baltimore Washington Medical Center	286	293	298	311	321	308	307	319	310	303
	<i>Total: Anne Arundel County</i>	551	571	599	627	645	644	687	704	694	678
Baltimore City	Bon Secours Hospital	141	151	125	126	141	127	115	107	88	72
	Johns Hopkins Bayview Medical Center	323	333	345	346	348	348	355	355	337	341
	MedStar Good Samaritan Hospital	265	265	245	236	235	222	224	206	177	165
	MedStar Harbor Hospital	186	203	215	221	193	179	160	136	120	113
	MedStar Union Memorial Hospital	279	283	292	295	271	231	236	221	205	211
	Mercy Medical Center	224	235	243	244	244	226	233	225	207	184
	Sinai Hospital of Baltimore	393	398	415	413	424	416	426	421	407	392
	St. Agnes Hospital	323	314	307	318	314	296	287	276	264	251
	The Johns Hopkins Hospital	958	982	979	990	994	992	1,000	1,060	1,082	1,129
	University of Maryland Medical Center	669	689	705	731	757	779	800	816	801	772
	Univ. of MD Medical Center Midtown Campus	205	209	191	180	167	164	155	128	110	107
	Univ. of MD Rehabilitation & Orthopaedic Institute	11	10	11	10	10	9	9	10	10	7
		<i>Total: Baltimore City</i>	3,977	4,072	4,073	4,110	4,098	3,989	4,000	3,961	3,808
Baltimore County	Greater Baltimore Medical Center	292	298	310	300	285	281	270	255	245	231
	MedStar Franklin Square Hospital	357	362	380	371	376	347	355	347	354	364
	Northwest Hospital Center	214	213	218	221	215	221	225	243	245	199
	Univ. of MD St. Joseph Medical Center	370	364	354	345	300	263	247	232	238	247
	<i>Total: Baltimore County</i>	1,233	1,237	1,262	1,237	891	1,112	1,097	1,077	1,082	1,041
Carroll County	Carroll Hospital Center	210	216	218	213	195	189	158	151	147	140
Harford County	Univ. of MD Harford Memorial Hospital	94	91	104	105	101	97	89	89	84	84
	Univ. of MD Upper Chesapeake Medical Center	167	168	182	196	186	175	181	185	183	180
	<i>Total: Harford County</i>	261	259	286	301	287	272	270	274	267	264
Howard County	Howard County General Hospital	208	219	209	227	238	249	249	253	259	266
CENTRAL MARYLAND TOTAL		6,440	6,574	6,647	6,715	6,354	6,455	6,461	6,420	6,257	6,133
Cecil County	Union Hospital of Cecil County	99	105	116	113	113	106	92	85	75	84
Dorchester County	Univ. of MD Shore Medical Center at Dorchester	53	49	54	54	53	52	46	41	39	47
Kent County	Univ. of MD Shore Medical Center at Chestertown	58	62	57	53	47	46	42	41	31	30
Somerset County	Edward W. McCready Memorial Hospital	9	8	9	8	8	9	5	4	4	4
Talbot County	Univ. of MD Shore Medical Center at Easton	120	123	120	125	120	116	112	112	112	112
Wicomico County	Peninsula Regional Medical Center	371	366	362	358	362	363	317	288	275	292
Worcester County	Atlantic General Hospital	49	51	53	55	53	53	48	45	48	48
EASTERN SHORE TOTAL		759	764	771	766	756	745	662	616	584	617
MARYLAND TOTAL		10,426	10,681	10,827	10,880	10,729	10,583	10,348	10,177	9,804	9,800

Source: Maryland Health Care Commission.

*Holy Cross Germantown Hospital opened October 1, 2014. Therefore the hospital has not yet operated for the twelve-month period necessary to calculate a licensed bed total derived from an annual average daily census. For this reason, the full physical bed complement is shown here.

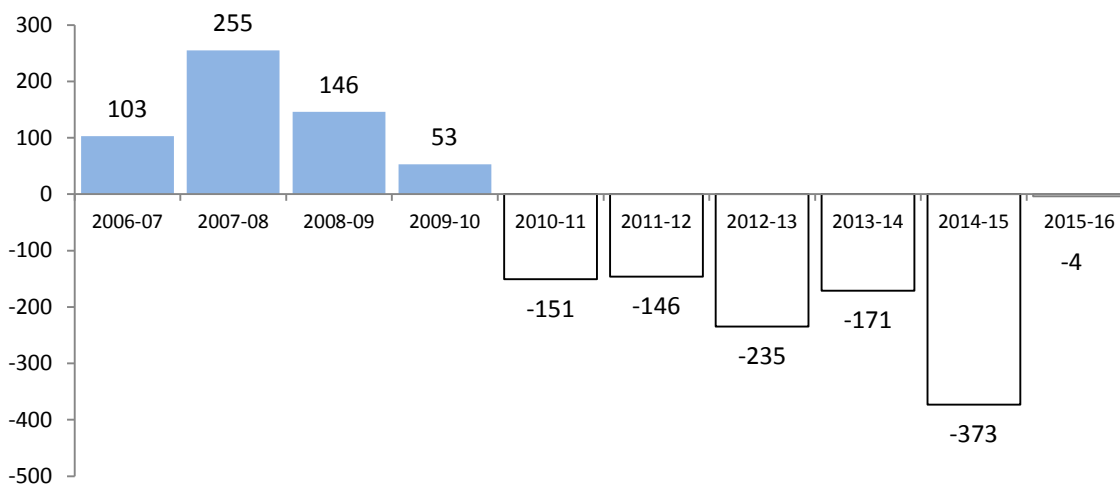
**Table 3. Percent Change in Total Licensed Acute Care Hospital Beds,
by Maryland Region: Fiscal Years 2007 - 2016**

Region	2007	2008	2009	2010	2011	2012	2013	2014	2015	2016	Average Annual Change 2006 - 2016
Western Maryland	-1.3%	5.1%	3.2%	-0.6%	-1.4%	2.9%	-4.2%	-5.7%	-7.4%	-4.0%	-1.3%
Montgomery County	-0.8%	4.8%	3.4%	1.8%	-1.5%	0.7%	-4.5%	-1.3%	-4.6%	9.9%	0.8%
Southern Maryland	1.3%	1.3%	-0.5%	-2.5%	-2.8%	1.3%	-5.2%	-2.0%	-5.8%	-1.1%	-1.6%
Central Maryland	1.8%	2.1%	1.1%	1.0%	-1.1%	2.8%	0.1%	-0.6%	-2.5%	-2.0%	0.3%
Eastern Shore	-0.5%	0.7%	0.9%	-0.6%	-1.3%	1.5%	-11.1%	-6.9%	-5.2%	5.7%	-1.7%
Maryland Total	1.0%	2.4%	1.4%	0.5%	-1.4%	-1.4%	-2.2%	-1.7%	-3.7%	0.0%	-0.5%

Source: Maryland Health Care Commission

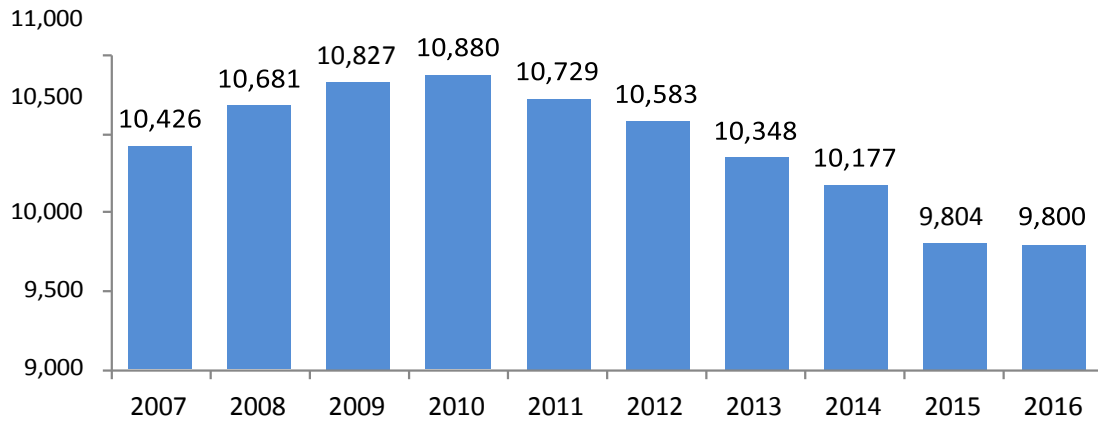
Chart 1 displays the annual net change in licensed acute care beds over the last ten years. Chart 2 shows the total number of licensed beds over the same period.

**Chart 1. Year to Year Change in Total Licensed Acute Care
Beds: Maryland Hospitals, FY 2006 - 2016**



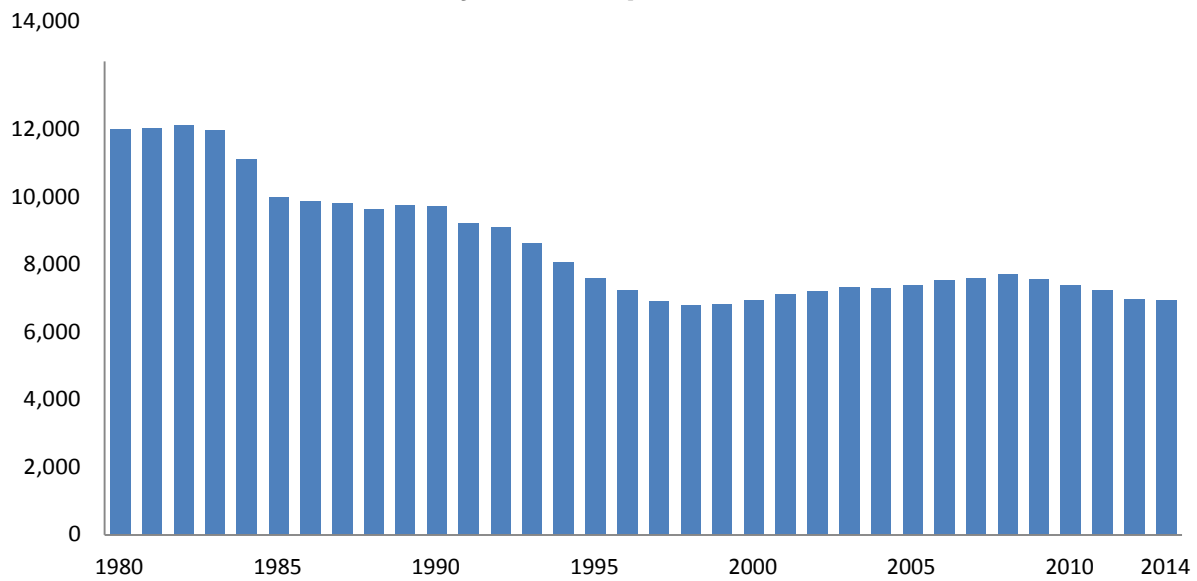
Source: Maryland Health Care Commission

**Chart 2. Total Licensed Acute Care Beds:
Maryland Hospitals, FY 2007 - 2016**



Source: Maryland Health Care Commission

**Chart 3. Trend in Average Daily Acute Care Patient
Census: Maryland Hospitals, CY 1980 - 2014**



While the average daily census of acute care patients began to gradually trend upward in the late 1990's, hospital utilization in Maryland never returned to historic peaks. During calendar year 2009 average daily census saw the first decline since dynamic hospital bed licensure went into effect in 2001. The average daily census declined again in calendar year 2010. Chart 3 shows the trend of declining acute care census from the early 1980s through the late 1990s, the extent of the rebound in census that occurred in the next ten years and the recent return to gradual decline after 2008.

Table 4 profiles the FY 2015 - 2016 change in total licensed acute care hospital beds from a regional perspective. The State as a whole experienced an overall decrease of 4 beds, a drop of less than 1%. Three (3) Maryland health planning regions saw licensed bed capacity shrink in FY 2016, with Western Maryland experiencing the biggest decline (4%). Montgomery County and the Eastern Shore saw licensed acute care bed totals increase, nearly ten percent in Montgomery County and over five percent on the Eastern Shore. Statewide, eighteen (18) hospitals saw an increase in bed capacity, twenty-four (24) hospitals saw a decline in bed capacity and four hospitals had no change in bed capacity from the previous year.

**Table 4. Change in Number of Total Licensed Acute Care Beds by Region:
Maryland Hospitals, FY 2015 - FY 2016**

Region	Total Number of Hospitals	Net Change in Number of Total Licensed Beds	Percent Change	Number of Hospitals with an Increase in Beds	Number of Hospitals with a Decline in Beds	Number of Hospitals with No Change in Hospital Beds
Western Maryland	4	(28)	-4.0%	2	2	0
Montgomery County	5	126	9.9%	3	2	0
Southern Maryland	8	(11)	-1.1%	4	4	0
Central Maryland	22	(124)	-2.0%	6	15	1
Eastern Shore	7	33	5.7%	3	1	3
MARYLAND TOTAL	46	(4)	0.0%	18	24	4

Source: Maryland Health Care Commission

Excludes Holy Cross Germantown which opened in October of 2014 .

Tables 5 and 6 profile the change in the inventory of licensed acute care hospital beds for the past ten fiscal years for the four acute care bed service categories. As can be seen, there have been no dramatic changes in the allocation of acute care beds by Maryland's hospitals over this period, with MSGA beds accounting for an average of 80% of total acute care beds, obstetric beds comprising an average of 8%, acute psychiatric beds, on average, 7% of total, and pediatric beds, 4% of total. Licensed bed capacity allocated to psychiatric services is the only service category of the four that saw consistent growth over this nine year period.

**Table 5. Allocation of Licensed Acute Care Beds by Service
Maryland Hospitals, FY2007 - 2016**

Service Category	2007	2008	2009	2010	2011	2012	2013	2014	2015	2016
MSGA	8,451	8,694	8,827	8,890	8,738	8,590	8,352	8,198	7,835	7,850
Obstetric	838	848	854	851	848	851	851	827	823	832
Pediatric	459	458	459	451	452	447	442	438	422	396
Acute Psychiatric	678	681	687	688	691	695	703	714	724	722
TOTAL	10,426	10,681	10,827	10,880	10,729	10,583	10,348	10,177	9,804	9,800

Source: Maryland Health Care Commission

**Table 6. Allocation of Licensed Acute Care Beds by Service (Percentage),
Maryland Hospitals, FY 2007 - FY 2016**

Service Category	2007	2008	2009	2010	2011	2012	2013	2014	2015	2016
MSGA	81.1%	81.4%	81.5%	81.7%	81.4%	81.2%	80.7%	80.6%	79.9%	80.1%
Obstetric	8.0%	7.9%	7.9%	7.8%	7.9%	8.0%	8.2%	8.1%	8.4%	8.5%
Pediatric	4.4%	4.3%	4.2%	4.1%	4.2%	4.2%	4.3%	4.3%	4.3%	4.0%
Acute Psychiatric	6.5%	6.4%	6.3%	6.3%	6.4%	6.6%	6.8%	7.0%	7.4%	7.4%
TOTAL	100%	100%	100%	100%	100%	100%	100%	100%	100%	100%

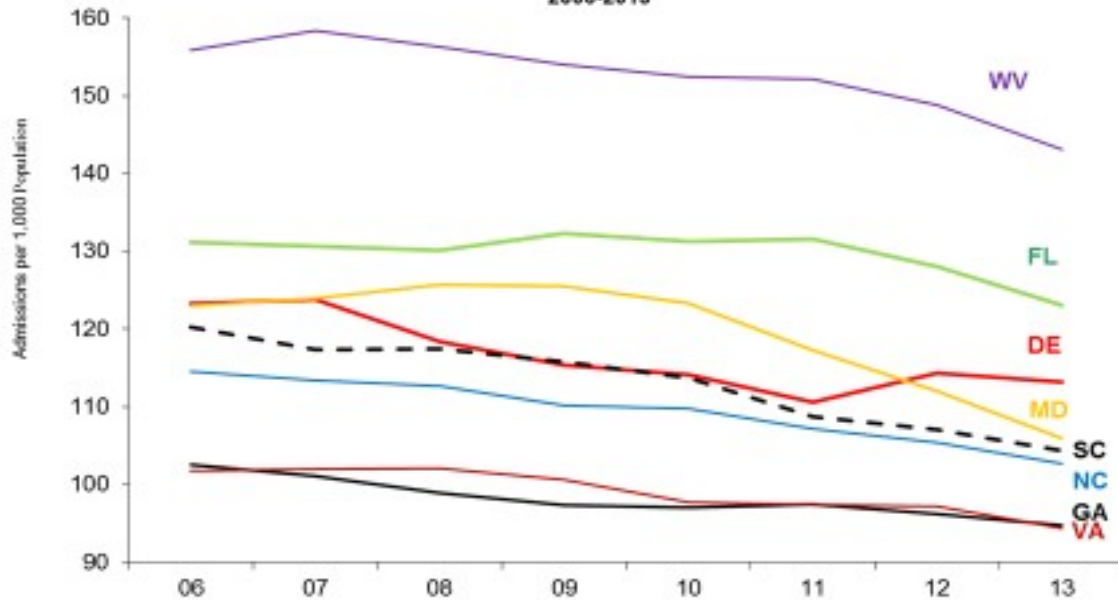
Source: Maryland Health Care Commission

Demand for Hospital Beds in Maryland Compared with Regional and National Trends

The following graphs profile information from *Hospital Statistics*, an annual publication of the American Hospital Association. They reflect this publication's reported acute care hospital use rates and average stay statistics for Maryland and contrasts the demand reported for other Southeastern States and the U.S. experience.

The first two graphs compare hospital admissions per thousand population and average length of hospital stay in Maryland with the experience of the seven other states in the South Atlantic Census Region. This data is not age-adjusted. The relative age of the population in these states is an important factor in its interpretation. To provide some context, the accompanying table compares the proportion of 65 and older persons in the total 2013 population of these states, as estimated by the U.S. Census Bureau.

**Chart 4: Hospital Admissions per 1,000 Population
All Hospital Unit Admissions (Excludes NH Unit Admissions)
South Atlantic Census Region States
2006-2013**



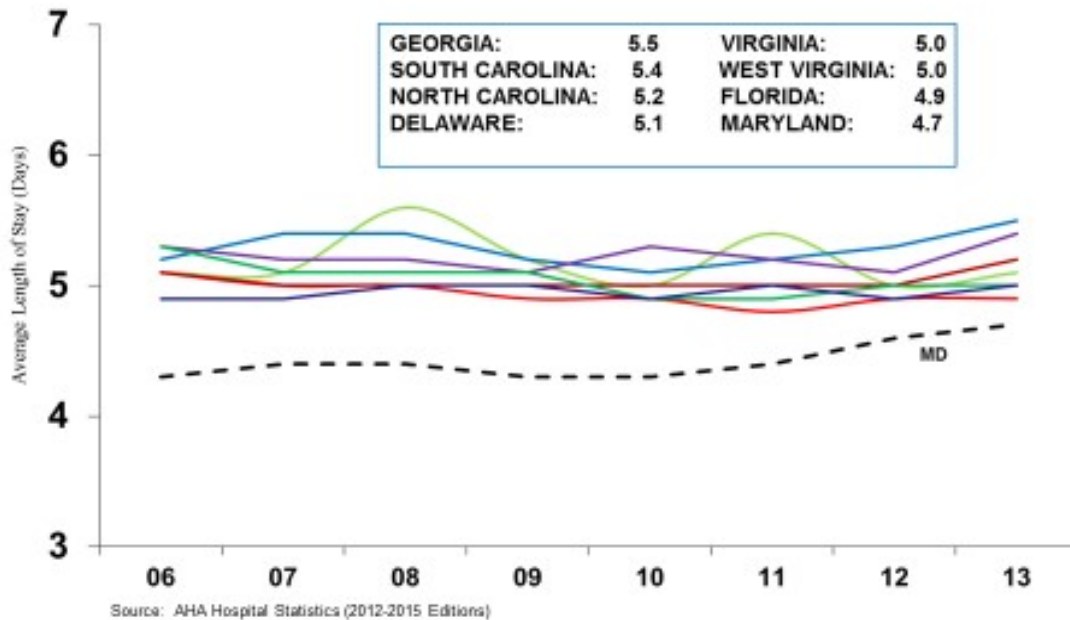
Source: AHA Hospital Statistics (2012-2015 Editions)

**Table 7.
Proportion of Total Population Aged 65 and Older
South Atlantic Census Region States, 2013**

State	Percentage of Population Aged 65 and Older
Florida (FL)	18.7%
West Virginia (WV)	17.3%
Delaware (DE)	15.9%
South Carolina (SC)	15.2%
North Carolina (NC)	14.3%
Maryland (MD)	13.4%
Virginia (VA)	13.4%
Georgia (GA)	12.0%

Source: U.S. Census Bureau, Estimated 2014

**Chart 5: Hospital Average Length of Stay
All Hospital Unit Admissions (Excludes NH Unit Admissions)
South Atlantic Census Region States
2006-2013**



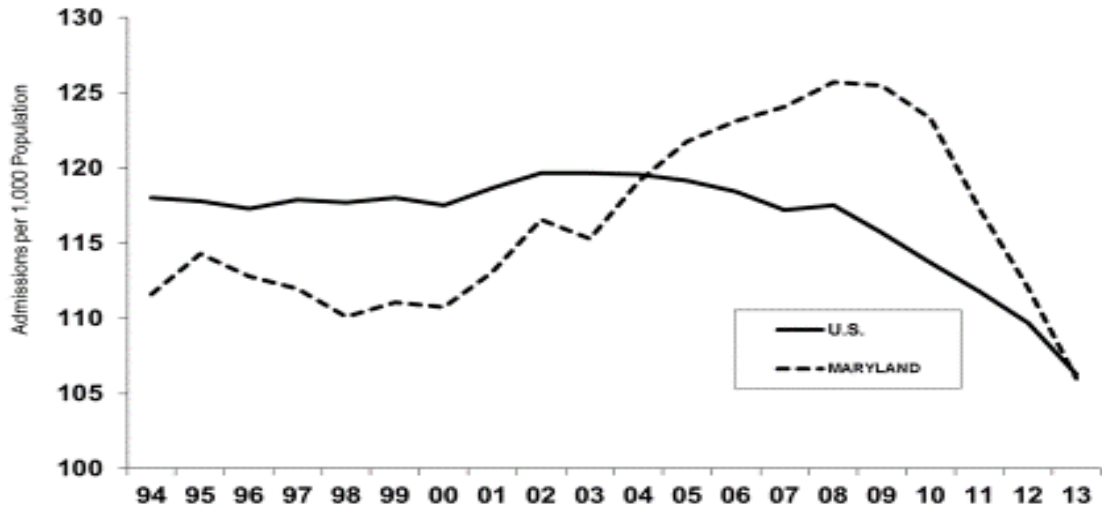
As will be noted, from a regional perspective, Maryland’s admissions rate has been lower than that of the states in the South Atlantic region with a higher percentage of population aged 65 and older, Florida and West Virginia, as would be expected. Maryland’s admissions rate was substantially higher, for the most part, in the early years of this time period compared with that of the Carolinas or Delaware, states with populations only slightly older than that of Maryland, and was much higher than Virginia’s hospital use rate, a state with a very similar proportion of elderly population. However, beginning in 2010, Maryland’s admissions rate has declined more steeply than that of any other state in this region.

Maryland stands out as having a distinctly shorter average length of hospital stay, when compared with these other states, as shown in Chart 5. The ALOS gap is closing however, indicating that Maryland’s decline in admissions was largely due to a decline in short-stay hospitalizations.

The following graphs, taken from the same data source, provide a longer-term perspective on Maryland and the Nation. Maryland had an enviable record with respect to admissions rate and average length of hospital stay in the 1990s but this changed during the previous decade. Hospital use rates in Maryland peaked in the 2008-09 period, at approximately 8-9% higher than the overall National use rate but have steeply declined in the following years.

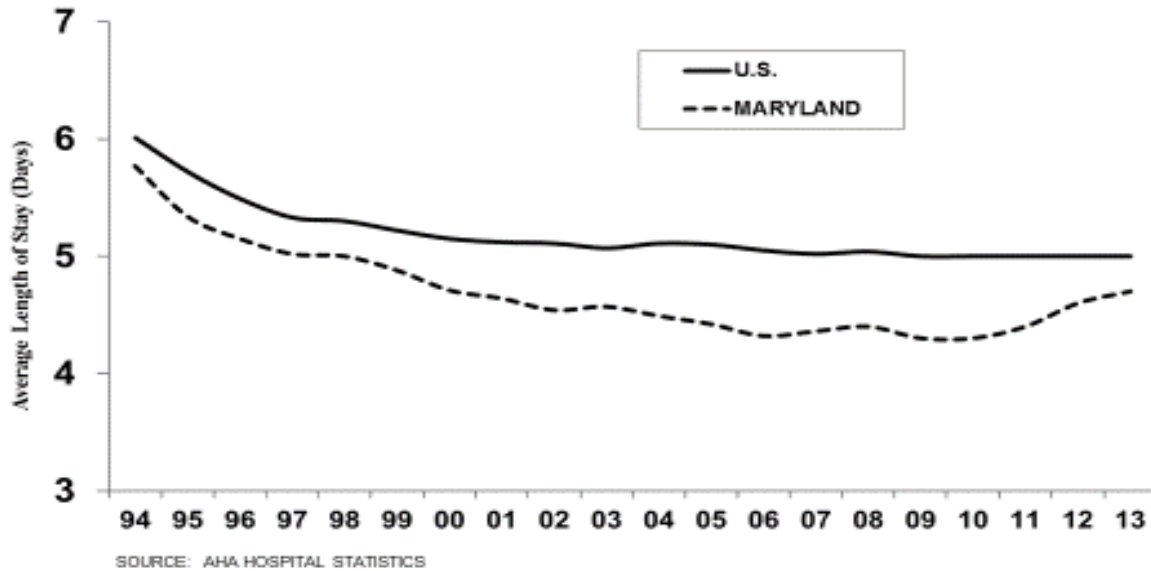
Maryland has been steadily discharging hospital patients more quickly, on average, than has been the National experience. Some narrowing of the gap between Maryland’s ALOS and that of the U.S. has occurred as Maryland’s hospitals have reduced short stays, in many cases, replacing such stays with “observation” admissions that are not recorded as hospital admissions in this data. The Health Services Cost Review Commission initiated policy changes in recent years aimed at reducing very short-stay admissions, prompted by data indicating a relatively high proportion of one day stays in the State. Further narrowing of the gap between Maryland and the nation with respect to hospital length of stay can be anticipated.

**Chart 6: Hospital Admissions per 1,000 Population
All Hospital Unit Admissions (Excludes NH Unit Admissions)
U.S. and Maryland
1994-2013**



Source: AHA Hospital Statistics (Average of Published Rates, 2000, 2002-2007, 2009-2015 Editions)

**Chart 7: Hospital Average Length of Stay
All Hospital Unit Admissions (Excludes NH Unit Admissions)
U.S. and Maryland
1994-2013**



Note concerning the AHA data: The American Hospital Association (AHA) conducts an annual survey of all hospitals, both AHA-registered and nonregistered, in the U.S. and its associated areas. AHA reports, overall, the average response rate over the past five years has been approximately 85 percent.

Critical Care Beds

Table 8 shows the FY 2016 inventory of critical care beds, which in the case of adult critical care beds, are a subset of MSGA beds. Adult critical care beds comprise 16.0% of the state’s licensed MSGA bed inventory, ranging from 9.0% in Western Maryland to 16.2% and 16.7% of licensed MSGA beds in Southern Maryland and Central Maryland, respectively. Pediatric critical care beds comprise 16.9% of the state’s licensed pediatric bed inventory.

**Table 8. Critical Care Bed Inventory:
Maryland Hospitals, FY 2016**

Jurisdiction/Region	Hospital	Critical Care Beds	
		Adult	Pediatric
Allegany County	Western Maryland Regional Medical Center	15	
Frederick County	Frederick Memorial Hospital	18	
Garrett County	Garrett County Memorial Hospital	2	
Washington County	Meritus Medical Center	15	
WESTERN MARYLAND TOTAL		50	0
Montgomery County	Adventist HealthCare Shady Grove Medical Center	28	
	Adventist HealthCare Washington Adventist Hospital	33	
	Holy Cross Germantown Hospital	15	
	Holy Cross Hospital	46	
	MedStar Montgomery General Hospital	12	
	Suburban Hospital	42	
MONTGOMERY COUNTY TOTAL		176	0
Calvert County	Calvert Memorial Hospital	4	
Charles County	University of Maryland Charles Regional Medical Center	20	
Prince George's County	Doctors Community Hospital	24	
	Fort Washington Medical Center	4	
	Laurel Regional Hospital	10	
	MedStar Southern Maryland Hospital	18	
	Prince George's Hospital Center	34	
St. Mary's County	MedStar St. Mary's Hospital	12	
SOUTHERN MARYLAND TOTAL		126	0
Anne Arundel County	Anne Arundel Medical Center	20	
	University of Maryland Baltimore Washington Medical Center	30	
Baltimore City	Bon Secours Hospital	8	
	Johns Hopkins Bayview Medical Center	52	
	MedStar Good Samaritan Hospital	14	
	MedStar Harbor Hospital	14	
	MedStar Union Memorial Hospital	49	
	Mercy Medical Center	24	
	Sinai Hospital at Baltimore	35	6
	St. Agnes Hospital	28	2
	The Johns Hopkins Hospital	116	40
	University of Maryland Medical Center	266	19
	University of Maryland Medical Center Midtown Campus	13	
Baltimore County	University of Maryland Rehabilitation and Orthopaedics Institute	2	
	Greater Baltimore Medical Center	24	
	MedStar Franklin Square Hospital	28	
	Northwest Hospital Center	16	
	University of Maryland St. Joseph Medical Center	38	
Carroll County	Carroll Hospital Center	12	
Harford County	University of Maryland Harford Memorial Hospital	6	
Howard County	University of Maryland Upper Chesapeake Medical Center	14	
	Howard County General Hospital	16	
CENTRAL MARYLAND TOTAL		825	67
Cecil County	Union Hospital of Cecil County	8	
Dorchester County	University of Maryland Shore Medical Center at Dorchester	6	
Kent County	University of Maryland Shore Medical Center at Chestertown	6	
Somerset County	Edward W. McCready Memorial Hospital	0	
Talbot County	University of Maryland Shore Medical Center at Easton	10	
Wicomico County	Peninsula Regional Medical Center	42	
Worcester County	Atlantic General Hospital	6	
EASTERN SHORE TOTAL		78	0
MARYLAND STATE TOTAL		1,255	67

Source: Maryland Health Care Commission. Note: Adult critical care beds include all medical surgical intensive care and coronary care beds and excludes definitive observation/stepdown beds, pediatric intensive care beds and NICU bassinets. Adult critical care beds are part of the larger MSGA inventory.

*Johns Hopkins Bayview includes 10 Burn Critical Care Beds, and University of Maryland Medical Center includes 115 Shock Trauma Beds.

Monitored Beds

Monitored beds are beds which the hospital identified as equipped with cardiac monitoring. “Monitored” means that cardiac monitoring is available for identified hospital beds. Previously this meant a bed was hard-wired for cardiac monitoring. With the institution of remote centralized monitoring, a wireless transmitting system that can be viewed on a central surveillance system, cardiac monitoring is no longer dependent on a stationary bed being hard wired. Wireless monitoring can detect early warning signs and changes in a patient’s condition through the continuous automated collection of key vital signs.

Table 9 identifies the proportion of total licensed acute care beds, by hospital, which the hospital identified as equipped with cardiac monitoring.

From FY 2008 to FY 2012, the number of monitored beds reported by Maryland’s acute care general hospitals increased 32%, this compares to the 18% increase from FY 2008 to FY 2011, in part due to the increase of monitoring capability with the introduction of wireless centralized systems. While monitored beds as a percentage of all licensed beds, from FY 2008 to FY 2011 increased an average of 5.6% per year, in FY 2013, the increase in monitored beds was 12%. The number of monitored beds reported by Maryland’s acute care hospitals increased from 55% of total licensed beds in FY 2013 to 63% in FY2016.

In addition to collecting monitored bed inventories for licensed acute care beds, MHCC also compiles that data for bassinets for hospitals that provide obstetrical and newborn nursery services. Thirty-three hospitals provide obstetric and perinatal services and report a combined total of 1,408 newborn nursery bassinets; of these bassinets, 458 (32.5%) have monitoring capability.

**Table 9. Licensed Acute Care Beds with Monitoring Capability:
Maryland Hospitals, FY2016**

Jurisdiction/Region	Hospital Name	FY 2016 Licensed Beds	Monitorable Beds	Monitorable as % of Licensed Beds
Allegany County	Western Maryland Regional Medical Center	195	77	39.5%
Frederick County	Frederick Memorial Hospital	233	212	91.0%
Garrett County	Garrett County Memorial Hospital	25	23	92.0%
Washington County	Meritus Medical Center	223	156	70.0%
	WESTERN MARYLAND TOTAL	676	468	69.2%
Montgomery County	Adventist HealthCare Shady Grove Medical Center	290	218	75.2%
	Adventist HealthCare Washington Adventist Hospital	230	145	63.0%
	Holy Cross Germantown Hospital	93	75	80.6%
	Holy Cross Hospital	423	150	35.5%
	MedStar Montgomery General Hospital	122	46	37.7%
	Suburban Hospital	236	128	54.2%
	MONTGOMERY COUNTY TOTAL	1,394	762	54.7%
Calvert County	Calvert Memorial Hospital	77	42	54.5%
Charles County	University of Maryland Charles Regional Medical Center	110	98	89.1%
Prince Georges County	Doctors Community Hospital	163	87	53.4%
	Fort Washington Medical Center	34	16	47.1%
	Laurel Regional Hospital	60	36	60.0%
	MedStar Southern Maryland Hospital Center	208	152	73.1%
	Prince George's Hospital Center	237	118	49.8%
St. Mary's County	MedStar St. Mary's Hospital	91	56	61.5%
	SOUTHERN MARYLAND TOTAL	980	605	61.7%
Anne Arundel County	Anne Arundel Medical Center	375	315	84.0%
	University of Maryland Baltimore Washington Medical Center	303	199	65.7%
Baltimore City	Bon Secours Hospital	72	48	66.7%
	Johns Hopkins Bayview Medical Center	341	159	46.6%
	MedStar Good Samaritan Hospital of Maryland	165	73	44.2%
	MedStar Harbor Hospital	113	97	85.8%
	MedStar Union Memorial Hospital	211	127	60.2%
	Mercy Medical Center	184	113	61.4%
	Sinai Hospital of Baltimore	392	183	46.7%
	St. Agnes Hospital	251	147	58.6%
	The Johns Hopkins Hospital	1,129	684	60.6%
	University of Maryland Medical Center	772	748	96.9%
	University of Maryland Medical Center Midtown Campus	107	90	84.1%
	University of Maryland Rehabilitation & Orthopaedic Institute	7	7	100.0%
Baltimore County	Greater Baltimore Medical Center	231	82	35.5%
	MedStar Franklin Square Hospital	364	162	44.5%
	Northwest Hospital Center	199	80	40.2%
	University of Maryland St. Joseph Medical Center	247	153	61.9%
Carroll County	Carroll Hospital Center	140	60	42.9%
Harford County	University of Maryland Harford Memorial Hospital	84	65	77.4%
	University of Maryland Upper Chesapeake Medical Center	180	137	76.1%
Howard County	Howard County General Hospital	266	126	47.4%
	CENTRAL MARYLAND TOTAL	6,133	3,855	62.9%
Cecil County	Union Hospital of Cecil County	84	84	100.0%
Dorchester County	University of Maryland Shore Medical Center at Dorchester	47	16	34.0%
Kent County	University of Maryland Shore Medical Center at Chestertown	30	30	100.0%
Somerset County	Edward W. McCready Memorial Hospital	4	4	100.0%
Talbot County	University of Maryland Shore Medical Center at Easton	112	46	41.1%
Wicomico County	Peninsula Regional Medical Center	292	272	93.2%
Worcester County	Atlantic General Hospital	48	32	66.7%
	EASTERN SHORE TOTAL	617	484	78.4%
STATE TOTAL		9,800	6,174	63.0%

Source: MHCC Supplemental Survey: Inpatient Monitoring Capacity, FY2016. Data are self reported. Capacity for inpatient monitoring means cardiac monitoring is available for the reported numbers of beds. Note: The calculated percentage reflects total licensed beds and does not necessarily reflect the actual complement of beds set up and staffed by the hospital.

Hospital System Affiliation

Table 10 profiles the trend in licensed acute care beds for hospitals that are members of multihospital systems and for hospitals that are independent or are the only Maryland hospital in a multi-hospital system. Sixty-eight percent (68%) of Maryland's general hospitals are part of the state's six multihospital systems.

Chart 8 shows the number of Maryland hospitals and beds that are part of a multihospital system and the number of hospitals and beds that are not part of a multihospital system in Maryland. Although there was little change from 2001 through 2007, the following eight years saw an increase in the number of hospitals joining multihospital systems.

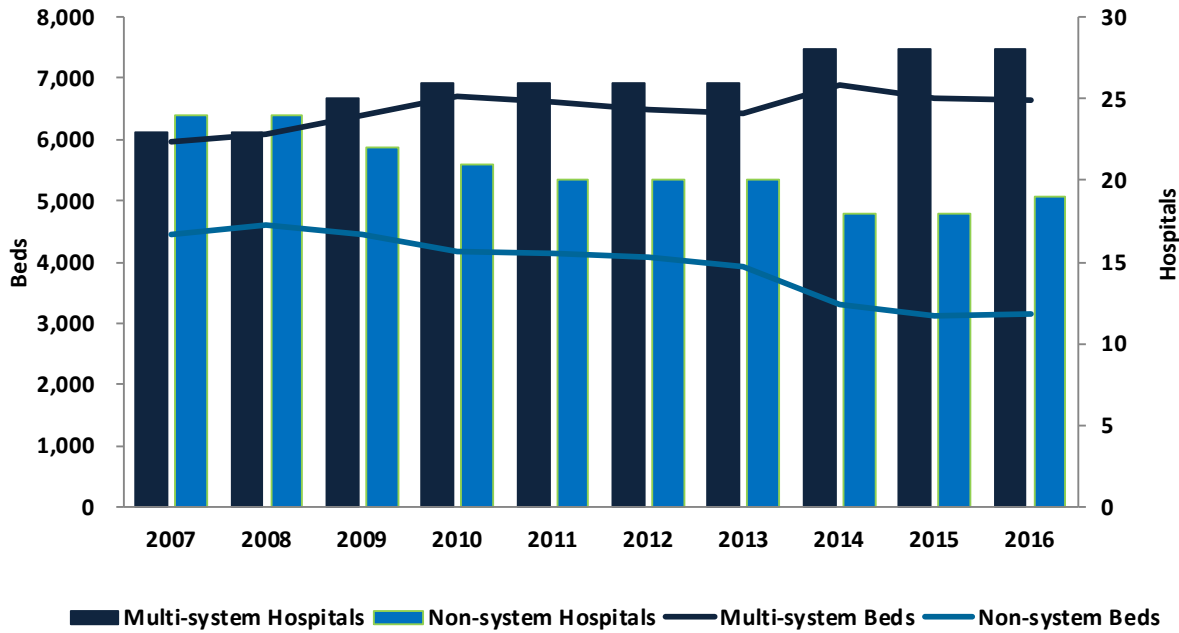
Table 11 compares the growth and annual change in the number of hospitals and beds that are part of Maryland multihospital systems with hospitals that are independent, reflecting the annual percent change in the distribution of beds and the change during the last eight years (FY 2009 to FY 2016).

Table 10. Trend in Licensed Acute Care Beds by System Affiliation:
Maryland Hospitals, FY 2007 - 2016

System Name	System Hospitals	2007	2008	2009	2010	2011	2012	2013	2014	2015	2016
Johns Hopkins Medical System (JHH)	The Johns Hopkins Hospital	958	962	979	990	994	992	1,000	1,060	1,082	1,129
	Johns Hopkins Bayview Medical Center	323	333	345	346	348	348	355	355	337	341
	Howard County General Hospital	208	219	209	227	236	249	249	253	259	266
	Suburban Hospital	-	-	-	239	222	233	229	236	220	236
	System Total	1,489	1,504	1,533	1,582	1,602	1,622	1,633	1,604	1,656	1,672
University of Maryland Medical System (UMMS)	University of Maryland Medical Center	669	669	705	731	757	779	800	816	801	772
	Univ. of MD Baltimore Washington Medical Center	286	293	298	311	321	308	307	319	310	303
	Univ. of MD Medical Center Midtown Campus	205	209	191	180	167	164	155	128	110	107
	Univ. of MD Rehabilitation & Orthopaedic Institute	11	10	11	10	10	9	9	10	10	7
	Univ. of MD St. Joseph Medical Center	-	-	-	-	-	-	-	232	238	247
	Univ. of MD Charles Regional Medical Center	-	-	-	-	120	124	110	121	115	110
	Univ. of MD Shore Medical Center at Easton	120	123	120	125	120	116	112	112	112	112
	Univ. of MD Shore Medical Center at Dorchester	53	49	54	54	53	52	46	41	39	47
	Univ. of MD Shore Medical Center at Chestertown	-	-	57	53	47	46	42	41	31	30
	Univ. of MD Upper Chesapeake Medical Center	-	-	-	-	-	-	-	-	183	180
Univ. of MD Harbor Memorial Hospital	-	-	-	-	-	-	-	-	84	84	
System Total	1,344	1,373	1,436	1,464	1,595	1,598	1,581	1,620	2,033	1,998	
MedStar Health	MedStar Franklin Square Hospital	357	362	380	371	376	347	355	347	354	364
	MedStar Good Samaritan Hospital	265	265	245	236	235	222	224	205	177	165
	MedStar Harbor Hospital	186	203	215	221	193	179	160	136	120	113
	MedStar Montgomery Medical Center	-	-	165	170	159	158	138	132	120	122
	MedStar Southern Maryland Hospital Center	-	-	-	-	-	-	-	227	207	208
	MedStar St. Mary's Hospital	-	-	-	-	96	90	90	89	82	91
	MedStar Union Memorial Hospital	279	283	292	285	271	231	236	221	205	211
	System Total	1,087	1,113	1,297	1,293	1,330	1,227	1,203	1,358	1,285	1,274
LifeBridge Health	Shil Hospital of Baltimore	393	398	415	413	424	416	426	421	407	392
	Northwest Hospital Center	214	213	218	221	215	221	225	243	245	199
	System Total	607	611	633	634	639	637	651	664	652	591
Adventist HealthCare	Adventist HealthCare Washington Adventist Hospital	285	294	292	288	281	271	252	252	232	230
	Adventist HealthCare Shady Grove Medical Center	258	275	293	320	336	339	351	312	305	290
	System Total	543	569	585	608	617	610	583	564	537	520
Dimensions Healthcare System	Prince George's Hospital Center	258	264	246	254	244	242	224	214	215	237
	Laurel Regional Hospital	95	95	97	95	87	88	77	78	74	60
	System Total	354	359	343	349	331	325	301	292	289	297
Western Maryland Medical (Health) System	Bradock Hospital	148	155	154	154	-	-	-	-	-	-
	Memorial Hosp & Med Ctr. of Cumberland	120	109	117	108	-	-	-	-	-	-
	Western Maryland Regional Medical Center	-	-	-	-	-	-	-	-	-	-
	System Total	268	264	271	262	-	-	-	-	-	-
Upper Chesapeake Health System	Upper Chesapeake Medical Center	167	168	182	196	186	175	181	166	-	-
	Harford Memorial Hospital	94	91	104	105	101	97	89	89	-	-
	System Total	261	259	286	301	287	272	270	274	-	-
Shore Health System	Memorial Hospital at Easton	-	-	-	-	-	-	-	-	-	-
	Dorchester General Hospital	-	-	-	-	-	-	-	-	-	-
	System Total	-	-	-	-	-	-	-	-	-	-
Total: System Hospitals		5,973	6,082	6,384	6,713	6,601	6,491	6,422	6,876	6,674	6,658
Non-System Hospitals	Year of System Affiliation/ System Current Name	2007	2008	2009	2010	2011	2012	2013	2014	2015	2016
	Anne Arundel Medical Center	265	278	301	316	324	336	340	356	359	375
	Atlantic General Hospital	49	51	53	55	53	53	48	45	48	48
	Bon Secours Hospital	141	151	125	126	141	127	115	107	88	72
	Calvert Memorial Hospital	107	105	106	98	98	95	95	92	85	77
	Cannell Hospital Center	210	216	216	213	195	189	158	151	147	140
	Chester River Hospital Center	2009/UMMS/Univ. of MD Shore Med. Ctr. at Chestertown	58	62	-	-	-	-	-	-	-
	Civista Medical Center	2011/UMMS/Univ. of MD Charles Regional Med. Ctr.	109	121	129	120	-	-	-	-	-
	Doctors Community Hospital		186	192	195	190	195	219	207	196	182
	Edward W. McCready Memorial Hospital		9	8	9	8	8	9	5	4	4
	Fort Washington Medical Center		42	42	43	43	42	41	31	33	31
	Frederick Memorial Hospital		227	246	269	274	276	309	298	297	256
	Garrett County Memorial Hospital		31	34	36	33	31	30	28	26	25
	Greater Baltimore Medical Center		292	295	310	300	285	281	270	255	245
	Holy Cross Germantown Hospital		-	-	-	-	-	-	-	-	93
	Holy Cross Hospital		379	404	408	404	402	409	395	397	391
	Mercy Medical Center		224	235	243	244	244	228	233	225	207
	Mertus Medical Center		243	264	268	260	258	252	245	237	231
	Montgomery General Hospital	2009/MedStar/MedStar Montgomery General Hosp.	144	149	-	-	-	-	-	-	-
	Peninsula Regional Medical Center		371	366	362	358	362	363	317	288	275
	St. Agnes Hospital		323	314	307	318	314	296	287	276	264
	St. Joseph Medical Center	2013/UMMS/Univ. of MD St. Joseph Medical Ctr.	370	364	364	345	300	263	247	-	-
	St. Mary's Hospital	2010/MedStar/MedStar St. Mary's	105	108	108	103	-	-	-	-	-
	Southern Maryland Hospital Center	2013/MedStar/MedStar Southern MD Hosp. Ctr.	257	258	265	246	235	238	239	-	-
	Suburban Hospital	2010/JHH/No Change	212	228	238	-	-	-	-	-	-
	Union Hospital of Cecil County		99	105	116	113	113	106	92	85	84
	Western Maryland Regional Medical Ctr.		-	-	-	-	252	250	234	200	192
Total: Non-System Hospitals		4,453	4,899	4,443	4,167	4,128	4,092	3,926	3,301	3,138	3,147
Maryland Total		10,426	10,981	10,827	10,880	10,729	10,583	10,348	10,177	9,804	9,805

Source: Maryland Health Care Commission. Systems are multi-hospital systems with more than one hospital in Maryland. This general hospital located in Washington D.C. is part of the MedStar Health System, the Washington Hospital Center with 525 licensed beds and Georgetown University Hospital with 625 licensed beds. The total number of acute beds operated by MedStar, including Washington Hospital Center and Georgetown University Hospital is 2,800.

Chart 8. Comparison of Multihospital Systems and Non-Multihospital System Hospitals, Maryland FY2007 - FY2016



Source: Maryland Health Care Commission

**Table 11. Multihospital Systems and Hospitals and Beds by System Status
Maryland FY2008 - FY2016**

System Status	2009	2010	Annual Change	2011	Annual Change	2012	Annual Change	2013	Annual Change	2014	Annual Change	2015	Annual Change	2016	Annual Change	Change 2009-2016
Multihospital Systems	8	8		7		7		7		7		6		6		
Multihospital System Hospitals	25	26		26		26		26		28		28		28		12.0%
Beds	6,384	6,713	5.2%	6,601	-1.7%	6,491	-1.7%	6,422	-1.1%	6,876	7.1%	6,674	-2.9%	6,653	-0.3%	4.2%
Percent of Maryland Hospitals	50%	55%		57%		57%		56.5%		63.0%		60.9%		59.6%		
Percent of Beds	57%	62%		62%		61%		62.1%		67.6%		68.1%		67.9%		
Non-system Hospitals	22	21		20		20		20		18		18		19		-13.6%
Beds	4,443	4,167	-6.2%	4,128	-0.9%	4,092	-0.9%	3,926	-4.1%	3,301		3,130	-5.2%	3,147	0.5%	-29.2%
Percent of Maryland Hospitals	47%	45%		43%		43%		43.5%		39.1%		39.1%		40.4%		
Percent of Beds	42%	38%		38%		39%		37.9%		32.4%		31.9%		32.1%		
Total Acute General Hospital	47	47		46		46		46		46		46		47		0.0%
Total Beds	10,681	10,880	1.9%	10,729	-1.4%	10,583	-1.4%	10,348	-2.2%	10,177	-1.7%	9,804	-3.7%	9,800	0.0%	-8.2%

Source: Maryland Health Care Commission

Total Available Acute Care Bed Capacity

The Commission surveys general hospitals for the total number of acute care beds they could physically accommodate, if necessary. Available acute care bed capacity is defined as the total number of acute inpatient beds that are available for use, or that could be physically set up in space appropriate for licensed acute inpatient care, as admissions might warrant. It is a physical count of beds based on the available patient rooms with headwalls, measuring the maximum operating capacity under normal, non-emergency circumstances, rather than a measure of staffing capacity.

The survey shows that 40 general hospitals in Maryland with 6,378 licensed acute care beds report the availability of physical bed capacity that exceeds their licensed capacity. These 40 hospitals, in the aggregate, report a physical capacity for 8,489 beds. This excess physical bed capacity (2,111 beds) would potentially be available to accommodate short term growth in demand and, if necessary, major emergencies and disasters, so long as staffing resources could be secured. Central Maryland has the greatest excess, with reported physical bed capacity exceeding licensed bed capacity by 764 beds, followed by Southern Maryland with 495 more physical beds than licensed beds.

Six hospitals report that their physical capacity to set up acute care beds, as of June, 2015 is less than their licensed bed capacity. These hospitals have a combined total of 3,329 licensed acute care beds and report that, in the aggregate, they only have physical capacity to set up 3,040 acute care beds, a difference of 289 beds.

Statewide, the Commission's June 1, 2015 survey identifies a net of 1,822 beds of physical bed capacity in excess of licensed bed capacity. The results of this survey are shown in Table 12.¹

¹ The data are self-reported and not verified by the Commission. To the extent possible, the Commission verifies hospital physical bed capacity on a case by case basis, when reviewing hospital expansion, renovation, and replacement projects submitted under the Certificate of Need Program.

Table 12. Total Available Physical Acute Care Bed Capacity Reported by Maryland Hospitals, June 1, 2015

Hospital Name	Licensed Beds FY 2016	Physical Capacity	Difference
Adventist HealthCare Shady Grove Medical Center	290	326	36
Adventist HealthCare Washington Adventist Hospital	230	304	74
Anne Arundel Medical Center	375	366	(9)
Atlantic General Hospital	48	62	14
Bon Secours Hospital	72	152	80
Calvert Memorial Hospital	77	126	49
Carroll Hospital Center	140	197	57
Doctors Community Hospital, Inc.	163	218	55
Edward W. McCready Memorial Hospital	4	26	22
Fort Washington Medical Center	34	37	3
Frederick Memorial Hospital	233	315	82
Garrett County Memorial Hospital	25	45	20
Greater Baltimore Medical Center, Inc.	231	342	111
Holy Cross Germantown Hospital*	93	93	0
Holy Cross Hospital	423	369	(54)
Howard County General Hospital	266	238	(28)
Johns Hopkins Bayview Medical Center	341	348	7
Laurel Regional Hospital	60	171	111
MedStar Franklin Square Hospital Center	364	342	(22)
MedStar Good Samaritan Hospital	165	253	88
MedStar Harbor Hospital	113	213	100
MedStar Montgomery Medical Center	122	187	65
MedStar Southern Maryland Hospital Center	208	339	131
MedStar St. Mary's Hospital	91	129	38
MedStar Union Memorial Hospital	211	313	102
Mercy Medical Center, Inc.	184	238	54
Meritus Medical Center	223	258	35
Northwest Hospital Center	199	214	15
Peninsula Regional Medical Center	292	380	88
Prince George's Hospital Center	237	311	74
Sinai Hospital of Baltimore	392	444	52
St. Agnes Hospital	251	367	116
Suburban Hospital	236	247	11
The Johns Hopkins Hospital	1,129	983	(146)
Union Hospital of Cecil County	84	118	34
University of Maryland Baltimore Washington Medical Center	303	320	17
University of Maryland Charles Regional Medical Center	110	144	34
University of Maryland Harford Memorial Hospital, Inc.	84	128	44
University of Maryland Medical Center	772	742	(30)
University of Maryland Medical Center Midtown Campus	107	159	52
University of Maryland Rehabilitation & Orthopaedic Institute	7	28	21
University of Maryland Shore Medical Center at Chestertown	30	40	10
University of Maryland Shore Medical Center at Dorchester	47	80	33
University of Maryland Shore Medical Center at Easton	112	150	38
University of Maryland St. Joseph Medical Center	247	315	68
University of Maryland Upper Chesapeake Medical Center	180	195	15
Western Maryland Regional Medical Center	195	250	55
MARYLAND TOTAL	9,800	11,622	1,822

Source: Maryland Health Care Commission

Note: Total available physical capacity is defined as the total number of acute inpatient beds that are available for use, including those that could be physically set up in space appropriate for licensed acute inpatient care as admissions might warrant. This should be a count of potentially available physical bed capacity rather than a measure of staffing capacity or a reflection of current use of patient care rooms. This is determined by the number of headw alls and/or gas lines that could be made available for inpatient use, without renovations. Rooms with two headw alls/gas lines should be counted as having capacity for two beds, and rooms with one headw all/gas line should be counted as having capacity for one bed, regardless of their current use. It does not include space currently used for non-acute or special hospital beds.

Observation Services

Observation services are those services furnished by the hospital on the hospital's premises, including use of a bed and periodic monitoring by the hospital's nursing or other staff, which are reasonable and necessary to determine the need for a possible admission to the hospital as an inpatient. Such services must be ordered and documented in writing as to time and method (FAX, telephone, etc.) by a medical staff practitioner. Observation services may or may not be provided in a distinct area of the hospital. Observation services include, but are not limited to; monitoring of vital life signs; collecting laboratory samples for diagnostic testing, use of specialized equipment assisting physicians during patient examination and treatment; changing of dressings and cleaning of wounds and incisions; observing and recording the emotional stability of patients; observing patients for reaction to drugs; administering specified medication; and infusing fluids intravenously.

Observation services are identified as a cost center by the Maryland Health Services Cost Review Commission and the standard unit of measure is hours. Extended recovery time for scheduled ambulatory surgery, emergency and/or labor and delivery observation are separate cost centers and are not included in observation services.

Beginning in 2012, hospitals were asked to report whether they use licensed beds, distinct unit (non-licensed) observation beds, or a combination of both licensed and distinct unit observation beds to provide services to observation patients. If distinct unit observation beds were used, the hospitals reported how many distinct unit observation beds were available. The hospitals were also asked if there were plans to expand the number of distinct unit observation beds and, if so, how many beds would be added. Finally, the hospitals were requested to report how many licensed beds were occupied by observation patients on an average day in the past twelve months.

As of June 1, 2015, twenty-two (22) hospitals report the existence of distinct unit observation beds. However, only two hospitals use distinct unit observation beds exclusively. Twenty-four (24) hospitals use licensed beds only and twenty (20) hospitals use a combination of distinct unit observation beds and licensed beds.² The total number of distinct unit observation beds available for all Maryland hospitals is 360, an increase of 93 distinct observation beds since June 1, 2014. Four (4) hospitals reported that they plan to expand the number of distinct unit observation beds within the next twelve months. The total additional distinct unit observation beds anticipated is 19. Table 13 below shows the responses as reported by each hospital and Table 14 provides a summary of all Maryland general hospital observation services

² The University of Maryland Rehabilitation and Orthopaedics Institute does not report the provision of observations services and does not operate an emergency department.

**Table 13. Maryland Acute Care General Hospital Observation (OBV) Services
June 1, 2015**

Hospital Name	Distinct Unit Observation Beds Only	Licensed Beds Only	Combination of Distinct Unit Observation and Licensed Beds	Number of Distinct Unit Observation Beds Available	Average Daily Census/ Observation Patients	Planned Expansion of Distinct Unit Observation Beds	Number of Beds Planned for Expansion
Frederick Memorial Hospital		√			17.0		
Garrett County Hospital		√			6.0		
Meritus Medical Center			√	14	14.0		
Western Maryland Regional Medical Center	√			20	12.0		
Western Maryland Total	1	2	1	34	-	-	-
Adventist HealthCare Shady Grove Medical Center	√			18	13.9		
Adventist HealthCare Washington Adventist Hospital		√			10.0		
Holy Cross Germantown Hospital			√	8	1.8		
Holy Cross Hospital			√	19	13.0		
MedStar Montgomery Medical Center			√	12	6.0	yes	3
Suburban Hospital			√	20	14.5		
Montgomery County Total	1	1	4	77	-	1	3
Calvert Memorial Hospital		√			7.0		
Doctors Community Hospital		√			12.0		
Fort Washington Medical Center		√			5.0		
Laurel Regional Hospital		√			5.0		
MedStar Southern Maryland Hospital Center		√			33.0		
MedStar St. Mary's Hospital		√			13.0		
Prince George's Hospital Center			√	16	12.0		
University of Maryland Charles Regional Medical Center		√			8.0		
Southern Maryland Total	0	7	1	16	-		
Anne Arundel Medical Center			√	17	18.0		
Bon Secours Hospital		√			8.0		
Carroll Hospital Center			√	22	11.0		
Greater Baltimore Medical Center		√			5.5		
Howard County General Hospital			√	13	5.6		
Johns Hopkins Bayview Medical Center			√	17	32.0		
MedStar Franklin Square Hospital			√	24	48.0		
MedStar Good Samaritan Hospital			√	32	15.0		
MedStar Harbor Hospital			√	11	12.0		
MedStar Union Memorial Hospital			√	12	11.0		
Mercy Medical Center		√			14.8		
Northwest Hospital Center		√			13.0		
Sinai Hospital of Baltimore		√			6.1		
St. Agnes Hospital		√			22.1		
The Johns Hopkins Hospital		√			5.0		
University of Maryland Baltimore Washington Medical Center		√			20.0		
University of Maryland Harford Memorial Hospital		√			13.0		
University of Maryland Medical Center			√	12	14.9	yes	10
University of Maryland Medical Center Midtown Campus			√	28	10.0		
University of Maryland Rehabilitation & Orthopaedic Institute	-	-	-	-	-	-	-
University of Maryland St. Joseph Medical Center			√	10	8.7	yes	6
University of Maryland Upper Chesapeake Medical Center			√	12	31.0	yes	
Central Maryland Total	0	9	12	210	-	3	16
Atlantic General Hospital		√			3.6		
Edward W. McCready Memorial Hospital		√			0.8		
Peninsula Regional Medical Center			√	10	7.0		
Union Hospital of Cecil County			√	13	6.0		
University of Maryland Shore Medical Center at Chestertown		√			2.0		
University of Maryland Shore Medical Center at Dorchester		√			1.0		
University of Maryland Shore Medical Center at Easton		√			3.0		
Eastern Shore Total	0	5	2	23	-	0	0
MARYLAND STATE TOTAL	2	24	20	360	-	4	19

Source: MHCC, Supplemental Survey Observation Services, June 1, 2015. *James Lawrence Kernan Hospital does not provide emergency services and does not have observation services.

Table 14. Summary - Acute Care Hospital Observation Beds, June 1, 2015

Observation Services	Total Hospitals	Total Distinct Unit Observation Beds
Distinct Unit Observation Beds Only	2	38
Licensed Beds Only	24	-
Combined Distinct Unit/Licensed Observation Beds	20	322
Total Number of Distinct Unit Observation Beds, All Hospitals	22	360
Hospitals with Planned Expansion	4	
Number of Proposed Distinct Unit Observation Beds*	19	

Source: Maryland Health Care Commission

*University of Maryland Upper Chesapeake has not determined how many distinct observation beds it will provide.

Emergency Department/ Freestanding Medical Facility Treatment Capacity

Maryland has 46 emergency departments (EDs) located in general hospitals and three freestanding emergency treatment facilities operated by general hospitals, licensed as “freestanding medical facilities.” (FMFs)³ The freestanding medical facilities are: (1) Bowie Health Center, located in Bowie (Prince George’s County) and operated by Prince George’s Hospital Center, with 15 treatment spaces allocated to emergency care; (2) Shady Grove Emergency Center at Germantown in Montgomery County with 21 treatment spaces, and operated by AHC Shady Grove Medical Center; and (3) Queen Anne’s Emergency Center, operated by University of Maryland Shore Medical Center at Easton, with 14 treatment spaces. This facility is located near Grasonville in Queen Anne’s County.

Table 15 shows the change in ED and FMF treatment capacity from a regional perspective. Six emergency departments report an increase in treatment capacity in the past year. Nine of the 46 EDs reported a decline in the number of treatment spaces from 2014 to 2015. Thirty-one hospitals and the three freestanding medical facilities with emergency department capacity had no change in treatment spaces. Overall, Maryland emergency departments/facilities reported an increase of four treatment spaces.

³ University of Maryland Rehabilitation and Orthopaedic Institute in Baltimore City is the only acute care hospital in Maryland that does not operate an emergency department.

Table 15. Change in Emergency Department/ Freestanding Medical Facility Treatment Capacity: Maryland, 2014 - 2015

REGION	Total Number of Emergency Departments and FMFs	Net Change in Emergency Treatment Spaces	Percent Change in Capacity in Emergency Treatment Spaces	Emergency Departments or FMFs with an Increase in Capacity	Emergency Departments or FMFs with a Decrease in Capacity	Emergency Departments or FMFs with No Change in Capacity
Western Maryland	4	(10)	-5.7%	0	1	3
Montgomery County*	7	13	5.1%	1	1	5
Southern Maryland*	9	(3)	-1.0%	0	2	7
Central Maryland**	21	(2)	-0.2%	4	5	12
Eastern Shore*	8	6	3.0%	1	0	7
State Total	49	4	0.2%	6	9	34

Source: Maryland Health Care Commission. *Montgomery County includes Shady Grove Emergency Center at Germantown, Southern Maryland includes emergency treatment capacity at the Bowie Health Center, and the Eastern Shore includes the Queen Anne's Emergency Center.

**Johns Hopkins Hospital operates 2 distinct emergency centers, the main emergency department and a pediatric emergency department, the emergency departments are combined and reported as one in Table 15.

Notes: University of Maryland Rehabilitation and Orthopaedic Institute does not provide emergency services.

Table 16 summarizes the Commission's supplemental survey of general hospital emergency department treatment capacity by hospital or freestanding medical facility and jurisdiction and region, identifying how Maryland's hospitals classify their ED or freestanding medical facility treatment spaces.

**Table 16. Inventory of Emergency Department/ Freestanding Medical Facility Treatment Capacity:
Maryland: June 1, 2015**

Jurisdiction/Region	Hospital Name	Treatment Spaces			Non-Treatment Spaces*
		Total Treatment Spaces	Monitored Spaces	Non-Monitored Spaces	
Allegany County	Western Maryland Regional Medical Center	53	30	23	4
Frederick County	Frederick Memorial Hospital	45	28	17	3
Garrett County	Garrett County Hospital	13	12	1	2
Washington County	Meritus Medical Center	55	51	4	1
WESTERN MARYLAND TOTAL		166	121	45	10
Montgomery County	Adventist HealthCare Germantown Emergency Center	21	9	12	2
	Adventist HealthCare Shady Grove Medical Center	64	31	33	0
	Adventist HealthCare Washington Adventist Hospital	26	15	11	0
	Holy Cross Germantown Hospital	14	11	3	2
	Holy Cross Hospital	61	35	26	8
	MedStar Montgomery General Hospital	41	32	9	3
	Suburban Hospital	41	29	12	3
MONTGOMERY COUNTY TOTAL		268	162	106	18
Calvert County	Calvert Memorial Hospital	34	22	12	3
Charles County	University of Maryland Charles Regional Medical Center	38	21	17	3
Prince George's County	Bowie Health Center	15	7	8	2
	Doctors Community Hospital	55	36	19	3
	Fort Washington Medical Center	18	7	11	1
	Laurel Regional Hospital	31	31	0	0
	Prince George's Hospital Center	46	21	25	1
	MedStar Southern Maryland Hospital Center	39	29	10	4
St. Mary's County	MedStar St. Mary's Hospital	32	20	12	6
SOUTHERN MARYLAND TOTAL		308	194	114	23
Anne Arundel County	Anne Arundel Medical Center	67	61	6	12
	University of Maryland Baltimore Washington Medical Ctr.	68	59	9	1
Baltimore City	Bon Secours Hospital	28	21	7	1
	Johns Hopkins Bayview Medical Center	45	29	16	18
	MedStar Good Samaritan Hospital	42	22	20	4
	MedStar Harbor Hospital	35	21	14	1
	MedStar Union Memorial Hospital	55	24	31	1
	Mercy Medical Center	57	47	10	3
	Sinai Hospital of Baltimore	67	62	5	3
	St. Agnes Hospital	65	49	16	6
	The Johns Hopkins Hospital - Main ED	73	73	0	0
	The Johns Hopkins Hospital - Pediatric ED	35	35	0	2
	University of Maryland Medical Center	123	61	62	4
	University of Maryland Medical Center Midtown Campus	29	19	10	2
Baltimore County	Greater Baltimore Medical Center	45	31	14	5
	MedStar Franklin Square Hospital	96	75	21	1
	Northwest Hospital Center	43	37	6	1
	University of Maryland St. Joseph Medical Center	38	37	1	5
Carroll County	Carroll Hospital Center	43	29	14	6
Harford County	University of Maryland Harford Memorial Hospital	27	23	4	0
	University of Maryland Upper Chesapeake Medical Center	54	36	18	3
Howard County	Howard County General Hospital	55	49	6	20
CENTRAL MARYLAND TOTAL		1,190	900	290	99
Cecil County	Union Hospital of Cecil County	32	18	14	3
Dorchester County	University of Maryland Shore Medical Center at Dorchester	18	18	0	0
Kent County	University of Maryland Shore Medical Center at Chestertown	17	14	3	0
Queen Anne's County	Queen Anne's Emergency Center	14	14	0	1
Somerset County	Edward W. McCready Memorial Hospital	8	6	2	0
Talbot County	University of Maryland Shore Medical Center at Easton	34	32	2	2
Wicomico County	Peninsula Regional Medical Center	51	34	17	0
Worcester County	Atlantic General Hospital	30	7	23	5
EASTERN SHORE TOTAL		204	143	61	11
MARYLAND STATE TOTAL		2,136	1,520	616	161

Source: Maryland Health Care Commission

*Non-treatment spaces in Emergency Departments include decontamination, observation/holding, and triage spaces in which treatment is not provided.

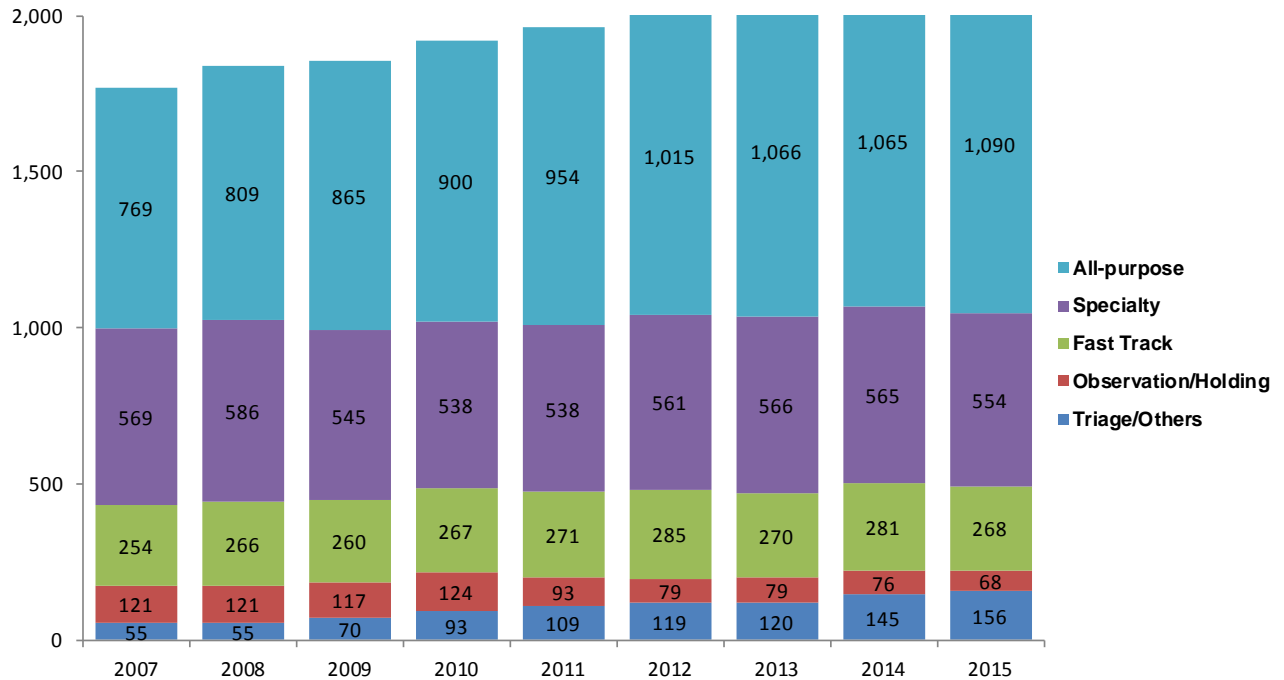
Table 17 shows the trend in emergency department/freestanding medical facility treatment capacity in Maryland from 2009 to 2015 by region, jurisdiction and hospital/facility. Chart 9 shows the change in the types of treatment spaces in Maryland.

Table 17. Trends in Emergency Department/ Freestanding Medical Facilities Treatment Capacity: Maryland, June 1, 2008 - June 1, 2015

Jurisdiction/Region	Hospital Name	Total Treatment Spaces							
		2008	2009	2010	2011	2012	2013	2014	2015
Allegany County	Braddock Hospital (formerly Sacred Heart)	16	16	-	-	-	-	-	-
	Memorial Hospital of Cumberland	21	20	-	-	-	-	-	-
	Western Maryland Regional Medical Center	-	-	51	53	53	53	53	53
Frederick County	Frederick Memorial Hospital	64	64	64	64	64	64	55	45
Garrett County	Garrett County Memorial Hospital	13	13	13	13	13	13	13	13
Washington County	Meritus Medical Center	48	48	48	55	55	55	55	55
WESTERN MARYLAND TOTAL		162	161	176	185	185	185	176	166
Montgomery County	Adventist HealthCare Germantown Emergency Center	21	21	21	21	21	21	21	21
	Adventist HealthCare Shady Grove Medical Center	56	61	63	64	64	64	64	64
	Adventist HealthCare Washington Adventist Hospital	26	28	28	26	26	26	26	26
	Holy Cross Germantown Hospital	-	-	-	-	-	-	-	14
	Holy Cross Hospital	54	60	59	59	59	61	61	61
	MedStar Montgomery General Hospital	32	32	41	41	41	41	41	41
	Suburban Hospital	43	43	43	43	43	43	42	41
MONTGOMERY COUNTY TOTAL		211	224	234	233	233	235	255	268
Calvert County	Calvert Memorial Hospital	34	34	34	34	34	34	34	34
Charles County	University of Maryland Charles Regional Medical Center	30	30	30	30	30	38	38	38
Prince George's County	Bowie Health Center	21	21	21	21	21	21	15	15
	Doctors Community Hospital	32	32	55	55	55	55	55	55
	Fort Washington Medical Center	18	18	18	18	18	18	18	18
St. Mary's County	Laurel Regional Hospital	30	30	30	30	30	31	31	31
	Prince George's Hospital Center	44	44	44	44	44	47	47	46
	MedStar Southern Maryland Hospital Center	28	28	29	34	42	42	41	39
	MedStar St. Mary's Hospital	30	30	32	32	32	32	32	32
	SOUTHERN MARYLAND TOTAL		267	267	293	298	306	318	311
Anne Arundel County	Anne Arundel Medical Center	44	44	44	49	67	67	67	67
Baltimore City	University of MD Baltimore Washington Medical Center	57	66	66	66	66	66	66	68
	Bon Secours Hospital	32	32	29	32	32	28	28	28
	Johns Hopkins Bayview Medical Center	39	39	40	40	40	40	40	45
	MedStar Good Samaritan Hospital of Maryland	34	34	45	43	43	43	43	42
	MedStar Harbor Hospital	34	35	35	35	35	35	35	35
	MedStar Union Memorial Hospital	49	49	49	49	49	49	55	55
	Mercy Medical Center	45	45	45	45	45	57	57	57
	Sinai Hospital of Baltimore	61	61	61	61	61	61	61	67
	St. Agnes Hospital	53	53	53	53	59	64	64	65
	The Johns Hopkins Hospital - Main ED	54	51	51	51	73	73	73	73
	The Johns Hopkins Hospital - Pediatric ED	25	25	25	25	35	35	35	35
	The Johns Hopkins Hospital - Ophthalmology ED	6	-	-	-	-	-	-	-
	Baltimore County	University of Maryland Medical Center	52	58	62	62	79	85	123
University of Maryland Medical Center Midtown Campus		25	25	25	25	29	28	30	29
Greater Baltimore Medical Center		45	45	45	45	45	45	45	45
MedStar Franklin Square Hospital		98	98	98	96	96	96	96	96
Northwest Hospital Center		38	42	43	42	44	49	54	43
University of Maryland St. Joseph Medical Center		49	44	39	39	39	39	38	38
Carroll County	Carroll Hospital Center	39	39	39	45	43	43	43	
Harford County	University of Maryland Harford Memorial Hospital	31	31	31	31	29	29	29	27
	University of MD Upper Chesapeake Medical Center	52	52	52	52	52	57	55	54
Howard County	Howard County General Hospital	55	55	55	55	55	55	55	55
CENTRAL MARYLAND TOTAL		1,017	1,023	1,032	1,041	1,116	1,144	1,192	1190
Cecil County	Union Hospital of Cecil County	27	27	32	32	32	32	32	32
Dorchester County	University of Maryland Medical Center at Dorchester	11	11	11	18	18	18	18	18
Kent County	University of Maryland Medical Center at Chestertown	11	11	11	11	11	11	11	17
Queen Anne's County	Queen Anne's Emergency Center	-	-	-	14	14	14	14	14
Somerset County	Edward W. McCready Memorial Hospital	8	8	8	8	8	8	8	8
Talbot County	University of Maryland Shore Medical Center at Easton	32	34	34	34	34	34	34	34
Wicomico County	Peninsula Regional Medical Center	51	51	51	51	51	51	51	51
Worcester County	Atlantic General Hospital	19	19	19	19	30	30	30	30
EASTERN SHORE TOTAL		159	161	166	187	198	198	198	204
STATE TOTAL		1,816	1,836	1,901	1,944	2,038	2,080	2,132	2,136

Source: Maryland Health Care Commission, Supplemental Survey - Emergency Departments/Freestanding Medical Facilities, 2008 - 2015

Chart 9. Change in Number of Emergency Treatment Spaces by Type of Space: Maryland, 2007 - 2015



Source: Maryland Health Care Commission

Hospital Surgical Services Capacity

Table 18 displays the inventory of sterile operating rooms, by room type, excluding dedicated cesarean section rooms, reported by Maryland general hospitals. Table 19 profiles the inventory of dedicated cesarean section operating rooms and procedure rooms. Procedure rooms are rooms used for endoscopy, cystoscopy, or other minor procedures and many are not sterile rooms, and thus, are only appropriately used for “closed” procedures that do not involve surgical incisions.

**Table 18. Surgical Services Capacity By Hospital and Room Use:
Maryland Hospitals, June 1, 2015**

Hospital	Inpatient General Purpose	Outpatient General Purpose	Mixed Use General Purpose	Inpatient Special Purpose	Outpatient Special Purpose	Mixed Use Special Purpose	Other Operating Rooms	Total Operating Rooms
Adventist HealthCare Shady Grove Medical Center	0	0	16	0	0	0	0	16
Adventist HealthCare Washington Adventist Hospital	0	0	8	0	0	3	0	11
Anne Arundel Medical Center	0	0	26	0	0	0	0	26
Atlantic General Hospital	0	0	4	0	0	0	0	4
Bon Secours Hospital	0	0	5	0	0	0	0	5
Calvert Memorial Hospital	0	0	6	0	0	0	0	6
Carroll Hospital Center	0	0	10	0	0	0	0	10
Doctors Community Hospital	0	3	9	0	0	0	0	12
Edward W. McCready Memorial Hospital	0	0	2	0	0	0	0	2
Fort Washington Medical Center	0	0	3	0	0	0	0	3
Frederick Memorial Hospital	0	0	11	0	0	0	0	11
Garrett County Memorial Hospital	0	0	3	0	0	0	0	3
Greater Baltimore Medical Center	0	0	30	0	0	0	0	30
Holy Cross Germantown Hospital	0	0	5	0	0	0	0	5
Holy Cross Hospital	0	0	14	0	0	0	0	14
Howard County General Hospital	0	0	13	0	0	0	0	13
Johns Hopkins Bayview Medical Center	0	0	14	0	0	0	0	14
Laurel Regional Hospital	0	0	6	0	0	0	1	7
MedStar Franklin Square Hospital	0	0	15	0	0	1	0	16
MedStar Good Samaritan Hospital of Maryland	0	0	10	0	0	1	0	11
MedStar Harbor Hospital	0	0	9	0	0	0	0	9
MedStar Montgomery General Hospital	0	0	5	1	0	0	0	6
MedStar Southern Maryland Hospital Center	0	0	10	0	0	0	0	10
MedStar St. Mary's Hospital	0	0	6	0	0	0	0	6
MedStar Union Memorial Hospital	0	0	21	0	0	0	0	21
Mercy Medical Center	0	0	19	0	0	0	3	22
Meritus Medical Center	0	0	11	0	0	0	0	11
Northwest Hospital Center	0	0	9	0	0	0	0	9
Peninsula Regional Medical Center3	0	0	10	0	0	3	0	13
Prince George's Hospital Center	1	0	8	0	0	0	0	9
Sinai Hospital of Baltimore	1	4	12	2	0	6	0	25
St. Agnes Hospital	0	0	19	0	0	0	0	19
Suburban Hospital	0	0	12	2	1	0	0	15
The Johns Hopkins Hospital	0	8	46	0	7	0	0	61
Union Hospital of Cecil County	0	0	3	0	0	0	0	3
University of Maryland Baltimore Washington Medical Center	0	0	16	0	0	0	0	16
University of Maryland Charles Regional Medical Center	0	0	4	0	0	0	0	4
University of Maryland Harford Memorial Hospital	0	0	4	0	0	0	0	4
University of Maryland Medical Center	8	0	14	0	0	13	0	35
University of Maryland Medical Center Midtown Campus	0	0	10	0	0	0	0	10
University of Maryland Rehabilitation & Orthopaedic Institute	0	0	6	0	0	0	0	6
University of Maryland Shore Medical Center at Chestertown	0	0	3	0	0	0	0	3
University of Maryland Shore Medical Center at Dorchester	0	0	4	0	0	0	0	4
University of Maryland Shore Medical Center at Easton	0	0	6	0	0	0	0	6
University of Maryland St. Joseph Medical Center	0	0	15	0	0	4	0	19
University of Maryland Upper Chesapeake Medical Center	0	0	11	0	0	0	0	11
Western Maryland Regional Medical Center	0	0	14	0	0	0	0	14
TOTAL	10	15	517	5	8	31	4	590

Source: Maryland Health Care Commission

**Table 19. Dedicated Cesarean Section Operating Rooms and Procedure Rooms by Hospital:
Maryland Hospitals, June 1, 2014**

Jurisdiction/Region	Hospital	Dedicated Cesarean Section OR's		Procedure Rooms*	
		Inside Sterile Area	Outside Sterile Area	Inside Sterile Area	Outside Sterile Area
Allegany County	Western Maryland Regional Medical Center	2	0	0	8
Frederick County	Frederick Memorial Hospital	2	0	1	3
Garrett County	Garrett County Memorial Hospital	0	0	0	1
Washington County	Meritus Medical Center	2	0	1	2
WESTERN MARYLAND TOTAL		6	0	2	14
Montgomery County	Holy Cross Hospital of Silver Spring	4	0	2	9
	MedStar Montgomery General Hospital	2	0	1	2
	Shady Grove Adventist Hospital	0	3	3	0
	Suburban Hospital	0	0	1	2
	Washington Adventist Hospital	2	0	2	0
MONTGOMERY COUNTY TOTAL		8	3	9	13
Calvert County	Calvert Memorial Hospital	1	0	1	7
Charles County	University of Maryland Charles Regional Medical Center	0	1	2	1
Prince George's County	Doctors Community Hospital	0	0	1	4
	Fort Washington Medical Center	0	0	1	1
	Laurel Regional Hospital	1	0	1	2
	MedStar Southern Maryland Hospital Center	2	0	2	2
	Prince George's Hospital Center	2	0	1	3
	<i>Total: Prince George's County</i>	<i>6</i>	<i>1</i>	<i>9</i>	<i>20</i>
St. Mary's County	MedStar St. Mary's Hospital	1	0	0	2
SOUTHERN MARYLAND TOTAL		7	1	9	22
Anne Arundel County	Anne Arundel Medical Center	3	0	0	4
	University of MD Baltimore Washington Medical Center	2	0	3	4
	<i>Total: Anne Arundel County</i>	<i>5</i>	<i>0</i>	<i>3</i>	<i>8</i>
Baltimore City	Bon Secours Hospital	0	0	1	3
	Johns Hopkins Bayview Medical Center	2	0	0	7
	MedStar Good Samaritan Hospital of Maryland	0	0	0	5
	MedStar Harbor Hospital	1	0	4	0
	MedStar Union Memorial Hospital	0	0	4	0
	Mercy Medical Center	2	0	8	0
	Sinai Hospital of Baltimore	2	0	5	1
	St. Agnes Hospital	2	0	0	1
	The Johns Hopkins Hospital	3	0	0	23
	University of Maryland Medical Center	3	0	4	8
	University of Maryland Medical Center Midtown Campus	0	0	0	8
	Univ. of MD Rehabilitation & Orthopaedic Institute	0	0	0	1
	<i>Total: Baltimore City</i>	<i>15</i>	<i>0</i>	<i>26</i>	<i>57</i>
Baltimore County	Greater Baltimore Medical Center	3	0	3	10
	MedStar Franklin Square Hospital	3	0	5	0
	Northwest Hospital Center	0	0	0	2
	University of MD St. Joseph Medical Center	2	0	1	5
	<i>Total: Baltimore County</i>	<i>8</i>	<i>0</i>	<i>9</i>	<i>17</i>
Carroll County	Carroll Hospital Center	2	0	0	3
Harford County	University of Maryland Harford Memorial Hospital	0	0	2	7
	University of Maryland Upper Chesapeake Medical Center	2	0	2	0
	<i>Total: Harford County</i>	<i>2</i>	<i>0</i>	<i>4</i>	<i>7</i>
Howard County	Howard County General Hospital	2	0	1	3
CENTRAL MARYLAND TOTAL		34	0	43	95
Cecil County	Union Hospital of Cecil County	1	0	4	1
Dorchester County	University of MD Shore Medical Center at Dorchester	0	0	0	2
Kent County	University of MD Shore Medical Center at Chestertown**	0	0	1	0
Somerset County	Edward W. McCready Memorial Hospital	0	0	0	0
Talbot County	University of MD Shore Medical Center at Easton	1	0	0	1
Wicomico County	Peninsula Regional Medical Center	2	0	2	1
Worcester County	Atlantic General Hospital	0	0	0	3
EASTERN SHORE TOTAL		4	0	7	8
MARYLAND TOTAL		59	4	70	152

Source: Maryland Health Care Commission

*Procedure Rooms include dedicated cystoscopy and endoscopy rooms and other procedure rooms

Table 20 shows the trend in surgical services capacity at Maryland hospitals for the three-year period June 1, 2013 through June 1, 2015.

**Table 20. Trends in Number of Surgical Rooms:
Maryland Hospitals, 2013 - 2015**

Jurisdiction/ Region	Hospital	2013			2014			2015		
		Total Operating Rooms	Total Procedure Rooms	Total Cesarean Section ORs	Total Operating Rooms	Total Procedure Rooms	Total Cesarean Section ORs	Total Operating Rooms	Total Procedure Rooms	Total Cesarean Section ORs
Allegany County	Western Maryland Regional Medical Center	14	8	2	14	8	2	14	8	2
Frederick County	Frederick Memorial Hospital	11	4	2	11	4	2	11	4	2
Garrett County	Garrett County Memorial Hospital	3	1	0	3	1	0	3	1	0
Washington County	Meritus Medical Center	11	3	2	11	3	2	11	3	2
WESTERN MARYLAND TOTAL		39	16	6	39	16	6	39	16	6
Montgomery County	Adventist HealthCare Shady Grove Medical Center	18	3	3	16	3	3	16	3	3
	Adventist HealthCare Washington Adventist Hospital	11	2	2	11	2	2	11	2	2
	Holy Cross Germantown Hospital	-	-	-	-	-	-	5	4	2
	Holy Cross Hospital	14	11	4	14	11	4	14	11	4
	MedStar Montgomery General Hospital	6	3	2	6	3	2	6	3	2
	Suburban Hospital	15	4	0	15	3	0	15	3	0
MONTGOMERY COUNTY TOTAL		64	23	11	62	22	11	67	26	13
Calvert County	Calvert Memorial Hospital	6	8	1	6	8	1	6	8	1
Charles County	Univ. of MD Charles Regional Medical Center	4	3	1	4	3	1	4	3	1
Prince George's County	Doctors Community Hospital	10	5	0	10	5	0	12	4	0
	Fort Washington Medical Center	3	2	0	3	2	0	3	2	0
	Laurel Regional Hospital	7	3	1	7	3	1	7	3	1
	Prince George's Hospital Center	9	4	2	9	4	2	9	4	2
	MedStar Southern Maryland Hospital Center	10	4	2	10	3	2	10	3	2
St. Mary's County	MedStar St. Mary's Hospital	5	2	1	5	2	1	6	2	1
SOUTHERN MARYLAND TOTAL		54	31	8	54	30	8	57	29	8
Anne Arundel County	Anne Arundel Medical Center	26	3	4	26	4	3	26	4	3
	Univ. of MD Baltimore Washington Medical Center	16	7	2	16	7	2	16	7	2
Baltimore City	Bon Secours Hospital	5	4	0	5	4	0	5	3	0
	Johns Hopkins Bayview Medical Center	14	7	2	14	6	2	14	6	2
	MedStar Good Samaritan Hospital	11	5	0	11	5	0	11	5	0
	MedStar Harbor Hospital	9	4	1	9	4	1	9	4	1
	MedStar Union Memorial Hospital	21	5	0	21	5	0	21	4	0
	Mercy Medical Center	22	8	2	22	8	2	22	8	2
	Sinai Hospital of Baltimore	25	6	2	25	6	2	25	6	2
	St. Agnes Hospital	19	1	2	19	1	2	19	1	2
	The Johns Hopkins Hospital	61	23	3	61	23	3	61	23	3
	University of Maryland Medical Center	35	12	3	35	12	3	35	12	3
	Univ. of MD Medical Center Midtown Campus	10	8	0	10	8	0	10	8	0
	Univ. of MD Rehabilitation & Orthopaedic Institute	6	1	0	6	1	0	6	1	0
Baltimore County	Greater Baltimore Medical Center	30	13	3	30	13	3	30	13	3
	MedStar Franklin Square Hospital	16	4	3	16	5	3	16	5	3
	Northwest Hospital Center	9	3	0	8	2	0	9	2	0
	University of Maryland St. Joseph Medical Center	19	6	2	19	6	2	19	6	2
Carroll County	Carroll Hospital Center	10	3	2	10	3	2	10	3	2
Harford County	University of Maryland Harford Memorial Hospital	4	9	0	4	9	0	4	7	0
	University of MD Upper Chesapeake Medical Ctr.	11	2	2	11	2	2	11	2	2
Howard County	Howard County General Hospital	13	4	2	13	4	2	13	4	2
CENTRAL MARYLAND TOTAL		392	138	35	391	138	34	392	134	34
Cecil County	Union Hospital of Cecil County	6	6	1	6	5	1	3	5	1
Dorchester County	Univ. of MD Shore Medical Center at Dorchester	4	2	0	4	2	0	4	2	0
Kent County	Univ. of MD Shore Medical Center at Chestertown	3	1	0	3	1	0	3	1	0
Somerset County	Edward W. McCready Memorial Hospital	2	0	0	2	0	0	2	0	0
Talbot County	Univ. of MD Shore Medical Center at Easton	6	1	1	6	1	1	6	1	1
Wicomico County	Peninsula Regional Medical Center	13	3	2	13	3	2	13	3	2
Worcester County	Atlantic General Hospital	4	3	0	4	3	0	4	4	0
EASTERN SHORE TOTAL		38	16	4	38	15	4	35	16	4
MARYLAND TOTAL		587	224	64	584	221	63	590	221	65

Source: Maryland Health Care Commission

*Procedure Rooms include dedicated cystoscopy and endoscopy rooms and other procedure rooms.

Obstetric and Perinatal Services Capacity

Thirty-three of the 47 general hospitals in Maryland provide obstetric and perinatal services.⁴ Table 21 outlines the distribution of obstetric service capacity by region, county and hospital.

Table 21. Obstetric Service Capacity, Maryland Hospitals, June 1, 2015

Jurisdiction/ Region	Hospital	Labor Beds	Delivery Beds	Recovery Beds	Ante Partum	Post Partum Beds	Labor- Delivery Beds	Labor- Delivery- Recovery (LDR) Beds	Labor- Delivery- Recovery- PostPartum (LDRP) Beds	Cesarean Section ORs
Allegany County	Western Maryland Regional Medical Center	0	0	2	2	14	0	4	0	2
Frederick County	Frederick Memorial Hospital	0	0	0	0	27	0	9	0	2
Garrett County	Garrett County Memorial Hospital	1	0	0	2	2	0	1	3	0
Washington County	Meritus Medical Center	0	0	0	6	6	0	0	18	2
WESTERN MARYLAND TOTAL		1	0	2	10	49	0	14	21	6
Montgomery County	Adventist HealthCare Shady Grove Medical	0	0	6	8	48	0	16	0	3
	Adventist HealthCare Washington Adventist	0	0	0	0	25	0	10	0	2
	Holy Cross Germantown Hospital	0	0	2	4	12	0	5	0	2
	Holy Cross Hospital	0	0	0	20	68	0	24	0	4
	MedStar Montgomery General Hospital	2	0	2	2	11	0	5	0	2
MONTGOMERY COUNTY TOTAL		2	0	10	34	164	0	60	0	13
Calvert County	Calvert Memorial Hospital	0	0	0	1	12	0	5	0	1
Charles County	Univ. of MD Charles Regional Medical Cent	0	0	0	2	12	0	4	0	1
Prince George's County	Laurel Regional Hospital	0	0	0	0	10	0	4	0	1
	Prince George's Hospital Center	0	0	0	0	38	0	11	2	2
	MedStar Southern Maryland Hospital Cente	0	0	4	0	30	0	8	0	2
	<i>Total: Prince George's County</i>	<i>0</i>	<i>0</i>	<i>4</i>	<i>0</i>	<i>78</i>	<i>0</i>	<i>23</i>	<i>2</i>	<i>5</i>
St. Mary's County	MedStar St. Mary's Hospital	0	0	0	1	12	0	5	0	1
SOUTHERN MARYLAND TOTAL		0	0	4	4	114	0	37	2	8
Anne Arundel County	Anne Arundel Medical Center	0	0	5	4	36	0	24	0	3
	Univ. of MD Baltimore Washington Medical	0	0	4	0	18	0	4	0	2
	<i>Total: Anne Arundel County</i>	<i>0</i>	<i>0</i>	<i>9</i>	<i>4</i>	<i>54</i>	<i>0</i>	<i>28</i>	<i>0</i>	<i>5</i>
Baltimore City	Johns Hopkins Bayview Medical Center	0	0	2	0	22	0	6	0	2
	MedStar Harbor Hospital	0	0	0	0	8	0	0	16	1
	Mercy Medical Center	0	0	3	3	29	0	13	0	2
	Sinai Hospital of Baltimore	0	0	3	0	27	0	7	0	2
	St. Agnes Hospital	0	0	0	0	0	0	12	0	2
	The Johns Hopkins Hospital	0	0	3	0	35	0	10	0	3
	University of Maryland Medical Center	5	0	3	8	14	0	7	0	3
	<i>Total: Baltimore City</i>	<i>5</i>	<i>0</i>	<i>14</i>	<i>11</i>	<i>135</i>	<i>0</i>	<i>55</i>	<i>16</i>	<i>15</i>
Baltimore County	Greater Baltimore Medical Center	0	0	0	12	48	0	17	0	3
	MedStar Franklin Square Hospital	0	0	5	0	17	0	0	20	3
	University of Maryland St. Joseph Medical C	0	0	0	9	20	0	9	0	2
	<i>Total: Baltimore County</i>	<i>0</i>	<i>0</i>	<i>5</i>	<i>21</i>	<i>85</i>	<i>0</i>	<i>26</i>	<i>20</i>	<i>8</i>
Carroll County	Carroll Hospital Center	0	0	2	0	5	0	0	15	2
Harford County	University of MD Upper Chesapeake Medic	0	0	2	0	0	0	0	14	2
Howard County	Howard County General Hospital	0	0	2	3	34	0	12	0	2
CENTRAL MARYLAND TOTAL		5	0	34	39	313	0	121	65	34
Cecil County	Union Hospital of Cecil County	0	0	0	0	3	0	0	8	1
Talbot County	Univ. of MD Shore Medical Center at Eastor	0	0	1	3	0	0	0	10	1
Wicomico County	Peninsula Regional Medical Center	0	0	0	0	20	0	13	0	2
EASTERN SHORE TOTAL		0	0	1	3	23	0	13	18	4
MARYLAND TOTAL		8	0	51	90	663	0	245	106	65

Source: Maryland Health Care Commission

⁴ University of Maryland Shore Medical Center at Chestertown (formerly Chester River Hospital Center) closed its obstetrics service effective March 31, 2012, University of Maryland Medical Center Midtown Campus (formerly Maryland General Hospital) closed its obstetrics service effective June 30, 2013.

Newborn nursery bassinets at the 33 hospitals providing perinatal services are shown below in Table 22.

**Table 22. Newborn Nursery Bassinets:
Maryland Hospitals, FY 2015**

Jurisdiction/ Region	Hospital	Newborn Nursery	Premature Nursery	Neonatal Intensive Care	Total Bassinets
Allegany County	Western Maryland Regional Medical Center	20	0	0	20
Frederick County	Frederick Memorial Hospital	30	0	30	60
Garrett County	Garrett County Memorial Hospital	12	0	0	12
Washington County	Meritus Medical Center	41	0	0	41
WESTERN MARYLAND TOTAL		103	0	30	133
Montgomery County	Adventist HealthCare Shady Grove Medical Center	48	0	31	79
	Washington Adventist Hospital	36	0	0	36
	Holy Cross Germantown Hospital	17	8	0	25
	Holy Cross Hospital	113	0	46	159
	MedStar Montgomery General Hospital	18	0	0	18
MONTGOMERY COUNTY TOTAL		232	8	77	317
Calvert County	Calvert Memorial Hospital	12	0	0	12
Charles County	Univ. of MD Charles Regional Medical Center	15	0	0	15
Prince George's County	Laurel Regional Hospital	9	0	0	9
	Prince George's Hospital Center	40	0	12	52
	MedStar Southern Maryland Hospital Center	16	8	0	24
<i>Total: Prince George's County</i>		<i>65</i>	<i>8</i>	<i>12</i>	<i>85</i>
St. Mary's County	MedStar St. Mary's Hospital	16	0	0	16
SOUTHERN MARYLAND TOTAL		108	8	12	128
Anne Arundel County	Anne Arundel Medical Center	40	0	30	70
	Univ. of MD Baltimore Washington Medical Center	15	0	0	15
<i>Total Anne Arundel County</i>		<i>55</i>	<i>0</i>	<i>30</i>	<i>85</i>
Baltimore City	Johns Hopkins Bayview Medical Center	20	0	25	45
	MedStar Harbor Hospital	44	0	0	44
	Mercy Medical Center, Inc.	40	0	26	66
	Sinai Hospital of Baltimore	35	0	21	56
	St. Agnes Healthcare	36	0	24	60
	The Johns Hopkins Hospital	25	0	45	70
	University of Maryland Medical Center	24	0	52	76
<i>Total: Baltimore City</i>		<i>224</i>	<i>0</i>	<i>193</i>	<i>417</i>
Baltimore County	Greater Baltimore Medical Center, Inc.	60	0	30	90
	MedStar Franklin Square Hospital Center	35	0	22	57
	University of Maryland St. Joseph Medical Center	20	0	20	40
	<i>Total: Baltimore County</i>		<i>115</i>	<i>0</i>	<i>72</i>
Carroll County	Carroll Hospital Center	25	0	0	25
Harford County	University of MD Upper Chesapeake Medical Center	10	0	0	10
Howard County	Howard County General Hospital	30	0	18	48
CENTRAL MARYLAND TOTAL		459	0	313	772
Cecil County	Union Hospital of Cecil County	12	0	0	12
Talbot County	Univ. of MD Shore Medical Center at Easton	18	0	0	18
Wicomico County	Peninsula Regional Medical Center	18	0	10	28
EASTERN SHORE TOTAL		48	0	10	58
MARYLAND TOTAL		950	16	442	1,408

Source: Maryland Health Care Commission

Special Hospital Services, Comprehensive Care Facilities in the Hospital Setting, and Hospital-Based Psychiatric Inpatient Care

Special hospitals are facilities that have an organized medical staff of physicians and that include inpatient beds with medical services. The medical services include physician services and continuous registered professional nursing services, for not less than 24 hours every day, to provide diagnosis and treatment for patients who have specific medical conditions. In Maryland, special hospitals provide specialized rehabilitation, chronic care, pediatric and psychiatric services. Special hospital services may be provided on the campus of a general hospital. With the exception of acute care psychiatric beds located within general hospitals, which are included as part of the general hospital's licensed acute care bed capacity, special hospital beds are separately licensed from general hospital beds. Special hospital beds are not included in the formula-driven annual relicensure process for acute care beds located in general hospitals. Thus, there should be consistency between licensed bed inventory and physical bed capacity reported for a specialty hospital.

Special Hospital Medical Rehabilitation Services

Acute inpatient rehabilitation is defined, at COMAR 10.24.09, as interdisciplinary care provided to persons with disabilities who are at high risk of potential medical instability, have a potential for needing skilled nursing care of a high medical acuity, and require a mix of services, service intensity levels, and settings of the following type:

1. Regular, direct individual contact by a physiatrist or physician of equivalent training and/or experience in rehabilitation who serves as their lead provider;
2. Daily rehabilitation nursing for multiple and/or complex needs;
3. A minimum of three hours of physical or occupational therapy per day, at least five days per week, in addition to therapies or services from a psychologist, a social worker, a speech-language pathologist, and a therapeutic recreation specialist, as determined by the individual's needs; or
4. Based on their individual needs, other services provided in a health care facility that is licensed as a hospital.

There are five (5) licensed special hospitals that provide medical rehabilitation services in Maryland and ten (10) Maryland acute care hospitals have special hospital units that provide medical rehabilitation services. Table 23 profiles the types of rehabilitation programs offered at these facilities, the number of licensed beds, and the number of licensed beds that are regularly staffed. Staffed beds are defined as the number of beds regularly maintained (set up and staffed for use) for inpatients. In this table, adult patients are defined as 18 years of age and older and pediatric patients are patients under the age of 18. The program listings are medical rehabilitation services that are accredited by the Commission on Accreditation of Rehabilitation Facilities (CARF). CARF is an independent nonprofit accrediting body of human service providers in the areas of aging services, behavioral health, child and youth services, durable medical equipment, prosthetics, orthotics and orthotic supplies, employment and community services, medical

rehabilitation, and opioid treatment programs. CARF accreditation is required by the State of Maryland for licensure of rehabilitation facilities.

Table 23. Inpatient Medical Rehabilitation Services by Region and Jurisdiction, June 1, 2015

Jurisdiction/ Region	Hospital	CARF Accredited Inpatient Medical Rehabilitation Programs Offered										Licensed Beds	Staffed Beds
		Comprehensive		Brain Injury		Spinal Cord		Stroke		Amputation			
		Adult	Pediatric	Adult	Pediatric	Adult	Pediatric	Adult	Pediatric	Adult	Pediatric		
Allegany County	Western Maryland Regional Medical Center	√		√								13	13
Washington County	Meritus Medical Center	√		√								20	20
<i>Western Maryland Total</i>											33	33	
Montgomery County	Adventist Rehabilitation Hospital of Maryland	√		√		√		√		√		87	87
<i>Montgomery County Total</i>											87	87	
Prince George's County	Laurel Regional Hospital	√						√				28	9
<i>Southern Maryland Total</i>											28	9	
Baltimore City	Univ. of MD Rehabilitation & Orthopaedic Institute	√	√	√	√	√	√	√				82	129*
	Johns Hopkins Bayview Medical Center	√						√				9	9
	Kennedy Krieger Children's Hospital		√		√							31	31
	Levindale Hebrew Geriatric Center & Hospital	√						√				20	20
	MedStar Good Samaritan Hospital	√						√				51	51
	MedStar Union Memorial Hospital	√										18	13
	Mount Washington Pediatric Hospital		√									46	26
	Sinai Hospital of Baltimore	√		√				√				57	43
	The Johns Hopkins Hospital	√										18	18
<i>Central Maryland Total</i>											332	211	
Talbot County	Univ. of MD Shore Medical Center at Easton	√						√				20	14
Wicomico County	HealthSouth Chesapeake Rehabilitation Center	√										54	54
<i>Eastern Shore Total</i>											74	68	
MARYLAND TOTAL											554	408	

Source: Maryland Health Care Commission and Commission on Accreditation of Rehabilitation Facilities (CARF) 9/9/2015.

Notes: 1. Licensed Beds for Adventist Rehabilitation Hospital of Maryland at Takoma Park are included in Adventist Rehabilitation of Maryland. 2. University of Maryland Rehabilitation & Orthopaedic Institute (formerly James Law rence Kernan Hospital) staffed beds include 36 chronic beds/16 dually licensed rehabilitation/chronic beds.

Other Special Hospital Services (non-psychiatric)

Pediatric

Facilities with beds licensed as Special Hospital – Pediatric are used to provide specialized inpatient services to patients less than 18 years of age. There are two special hospitals in Maryland dedicated to providing specialized pediatric services. Both hospitals provide rehabilitation and other special hospital services. Mount Washington Pediatric Hospital has been allowed to operate, under a single license, its main hospital facility in Baltimore City and a 15-bed hospital in Prince George’s County, which operates in leased space at Prince George’s Hospital Center, a general hospital. (See Table 24).

Chronic Care

Facilities with beds licensed as Special Hospital-Chronic provide continuous and intensive medical, nursing, and ancillary services to medically-complex patients with severe illness who require close professional monitoring and observation and frequent medical interventions, either after an acute hospital phase of care or as a result of acute exacerbations of illness while residing in other settings, such as the patient’s home or a nursing home (comprehensive care facility).

There are three special hospitals–chronic operating in Maryland. (See Table 24.) They range in size from 60 to 100 beds, and are currently licensed to operate 226 beds but only 140 are reported to be regularly staffed. One chronic hospital is private, and two are state-operated. The private chronic special hospital, Levindale Hebrew & Geriatric Center & Hospital, is located in the Central Maryland region. The two state operated chronic hospitals are each located in the less densely populated Health Planning Regions of Western Maryland and the Eastern Shore. Four

acute care general hospitals, three located in Baltimore City and one in Prince George’s County (the Southern Maryland region) provide chronic special hospital services. The three Central Maryland Hospitals have a total of 192 licensed chronic care beds located on their campuses, with 153 reported to be staffed. The Mount Washington Pediatric Hospital at Prince George’s Hospital Center (see preceding section of this report concerning pediatric special hospitals) has 15 licensed pediatric specialty beds with 12 reported to be staffed.

Chronic beds operated on an acute care hospital campus are licensed separately and are not part of the annual acute care bed licensure process.

Table 24. Licensed Special Hospitals and their Special Hospital (Non-Psychiatric and Non-Rehabilitation) Beds: Maryland, June 1, 2015

Jurisdiction/ Region	Specialty Hospitals	Pediatric		Chronic	
		Licensed	Staffed	Licensed	Staffed
Washington County	Western Maryland Center	-	-	60	20
	Western Maryland Total	-	-	60	20
Baltimore City	Kennedy Krieger Children's Hospital	39	39	-	-
	Levindale Hebrew Geriatric Center & Hospital	-	-	100	100
	Mount Washington Pediatric Hospital	56	40	-	-
	Central Maryland Total	95	79	100	100
Wicomico County	Deer's Head Center	-	-	66	20
	Eastern Shore Total	-	-	66	20
	Maryland Total	95	79	226	140

Source: Maryland Health Care Commission, Office of Health Care Quality, DHMH, Hospital Management System

Table 25. Licensed Special Hospital (Non-Psychiatric and Non-Rehabilitation) Beds: Located on Acute Care Hospital Campuses, Maryland, June 1, 2015

Jurisdiction/ Region	Acute Care Hospitals	Chronic		Dual Rehabilitation/ Chronic		Pediatric Specialty	
		Licensed	Staffed	Licensed	Staffed	Licensed	Staffed
Baltimore City/Central Maryland	Univ. of MD Rehabilitation & Orthopaedic Institute	36	36	16	16	-	-
Baltimore City/Central Maryland	Johns Hopkins Bayview Medical Center	76	57	-	-	-	-
Baltimore City/Central Maryland	Univ. of MD Medical Center Midtown Campus	80	60	-	-	-	-
Prince George's/Southern Maryland	Mt. Washington Pediatric Hosp. at Prince George's Hosp.	-	-	-	-	15	12
Prince George's/Southern Maryland	Laurel Regional Hospital	46	18	-	-	-	-
	Maryland State Total	238	171	16	16	15	12

Source: Maryland Health Care Commission; Office of Health Care Quality. *Univ. of MD Rehabilitation & Orthopaedic Institute (formerly James Lawrence Kernan Hospital) staffed chronic beds exceed licensed beds through use of dually licensed Rehabilitation/Chronic Care beds.

Comprehensive Care Facility (Nursing Home) Beds in the Hospital Setting

Comprehensive care facilities (“CCFs”), commonly known as “nursing homes,” are licensed in accordance with COMAR 10.07.02. These facilities admit patients suffering from disease or disabilities, or advanced age, requiring medical service and nursing service rendered by or under the supervision of a registered nurse. The vast bulk of CCF services are provided in Maryland through freestanding (non-hospital) CCFs, commonly known as nursing homes. Only 2.8% of the state’s total CCF beds are located in general or special hospital settings. However, this type of inpatient facility service is also offered by seven acute care general hospitals (Table 26) and by three facilities that combine comprehensive care facility services (Table 27) with chronic care services (Table 24). CCF beds in general hospitals are primarily used to provide short-term rehabilitative services to Medicare patients. In contrast, most of the state’s CCF beds are used to provide longer-term chronic and custodial care.

Table 26. Licensed Comprehensive Care Facility Beds at Acute Care Hospitals, Maryland, June 1, 2015

Jurisdiction/ Region	Hospital	Licensed Comprehensive Care Facility Beds	Staffed Beds
Garrett County	Garrett County Memorial Hospital	10	10
<i>Western Maryland Total</i>		<i>10</i>	<i>10</i>
Calvert County	Calvert Memorial Hospital	18	14
Prince George's County	MedStar Southern Maryland Hospital Center	24	24
<i>Southern Maryland Total</i>		<i>42</i>	<i>38</i>
	MedStar Good Samaritan Hospital	30	30
	Mercy Medical Center	29	29
Baltimore County	Greater Baltimore Medical Center	25	25
	Northwest Hospital Center	39	39
<i>Central Maryland Total</i>		<i>123</i>	<i>123</i>
<i>Maryland Total - Acute Care Hospitals</i>		<i>175</i>	<i>171</i>

Source: Maryland Health Care Commission, Office of Health Care Quality

**Table 27. Licensed Comprehensive Care Facility Beds at Special Hospitals
June 1, 2015**

Jurisdiction/ Region	Hospital	Licensed Comprehensive Care Facility Beds	Staffed Beds
Wicomico County/ Eastern Shore	Deer's Head Center	80	60
Baltimore City/ Central Maryland	Levindale Hebrew Geriatric Center & Hospital	210	210
Washington County/ Western Maryland	Western Maryland Center	63	44
Maryland State Total		353	314

Source: Maryland Health Care Commission, Office of Health Care Quality, DHMH, Hospital Management System

Psychiatric Hospital Facilities and Services

In Maryland, two types of hospital-level inpatient psychiatric services are provided; acute psychiatric services and longer-term, continuing care. Most acute inpatient psychiatric care is provided within the general hospital setting at 29 hospitals. These psychiatric beds are included in the annual “dynamic” licensure process for all acute care beds located in acute care general hospitals in which the licensed acute care bed inventory is based on recorded average daily census. Hospital-level psychiatric inpatient care outside of the acute care general hospital setting can be found in freestanding private hospitals or in state hospitals. The psychiatric beds in these two facility types are licensed as a category of “special hospital” beds under the State’s licensing statute. Freestanding private psychiatric hospitals primarily provide acute psychiatric inpatient services. State psychiatric hospitals primarily provide long-term, psychiatric inpatient services.

Table 28 provides an overview of the acute psychiatric inpatient service bed capacity and program characteristics of general hospitals. In general, services for children are provided to a patient population under the age of 13 years, adolescent services are provided to patients aged 13 to 17, and adult services are provided to patients aged 18 years and older.

**Table 28. Inpatient Acute Psychiatric Services Available at General Acute Care Hospitals:
Maryland, FY 2016**

Jurisdiction/ Region		Designated FY 2016 Licensed Beds	Acute Adult	Acute Child	Acute Adolescent	Acute Geriatric	Accept Involuntary Patients
Allegany County	Western Maryland Regional Medical Center	17	√			√	√
Frederick County	Frederick Memorial Hospital	21	√			√	√
	Meritus Medical Center	16	√			√	√
Western Maryland Total		54					
Montgomery County	Adventist HealthCare Washington Adventist Hospital	40	√				√
	Holy Cross Germantown Hospital	6	√				No
	MedStar Montgomery General Hospital	20	√				No
	Suburban Hospital	24	√		√	√	No
Montgomery County Total		90					
Calvert County	Calvert Memorial Hospital	9	√		√		√
Prince George's County	Laurel Regional Hospital	9	√				No
	Prince George's Hospital Center	28	√				√
	MedStar Southern Maryland Hospital Center	25	√			√	√
St. Mary's County	MedStar St. Mary's Hospital	12	√				√
Southern Maryland Total		83					
Anne Arundel County Baltimore City	Univ. of MD Baltimore Washington Medical Center	14	√				√
	Bon Secours Hospital	24	√				√
	Johns Hopkins Bayview Medical Center	20	√				No
	MedStar Union Memorial Hospital	26	√				√
	Sinai Hospital of Baltimore	24	√			√	√
	The Johns Hopkins Hospital	108	√	√		√	√
	University of Maryland Medical Center	56	√	√		√	√
Baltimore County	Univ. of MD Medical Center Midtown Campus	28	√			√	√
	MedStar Franklin Square Hospital	40	√		√		√
	Northwest Hospital	23	√			√	√
	University of Maryland St. Joseph Hospital	19	√			√	No
Carroll County	Carroll Hospital Center	20	√		√	√	
Harford County	University of Maryland Harford Memorial Hospital	26	√			√	
Howard County	Howard County General Hospital	20	√			√	
Central Maryland Total		448					
Cecil County	Union Hospital of Cecil County	11	√			√	√
Dorchester County	University of MD Shore Medical Center at Dorchester	24	√				√
Wicomico County	Peninsula Regional Medical Center	12	√				√
Eastern Shore Total		47					
Maryland State Total		722					

Source: Maryland Health Care Commission survey of psychiatric services capacity, June, 2015.

Note: Western Maryland Regional Medical Center, Washington County Hospital, and Howard County General report that adolescents (defined as 16+) may be provided services in the same section as adults. Suburban combines adolescents (13+), adults and geriatric in a combined unit. Adult and Geriatric units are combined at Frederick Memorial, MedStar Montgomery General Hospital, Laurel Regional, Prince George's Hospital, Sinai, Northwest, and University of Maryland St. Joseph's Hospital.

Tables 29 and 30 profile psychiatric inpatient service capacity and inpatient program characteristics at Special Hospitals – Psychiatric. Table 29 identifies the licensed bed capacity and the number of beds reported to be regularly staffed at Maryland's five freestanding private psychiatric hospitals. Table 30 identifies the number of licensed beds and "budgeted" beds, at Maryland's five state-operated psychiatric hospitals. The number of "budgeted" beds provides a more accurate reflection of the bed capacity that is typically set up and staffed at these facilities than the number of licensed beds.

**Table 29. Inpatient Services Available at Private Special Hospitals - Psychiatric:
Maryland, June 1, 2015**

Jurisdiction/ Region	Special Hospital Name	Licensed Capacity	Staffed Beds	Acute Adult	Acute Child	Acute Adolescent	Acute Geriatric	Accept Involuntary Patients
Washington County	Brook Lane Health Services	65	57	√	√	√	√	√
Western Maryland Total		65	43					
Montgomery County	Adventist Behavioral Health Rockville	107	106	√	√	√	√	√
Montgomery County Total		107	106					
Baltimore County	Sheppard and Enoch Pratt Hospital	322	262	√	√	√	√	√
Howard County	Sheppard Pratt at Ellicott City	92	78	√		√		√
Central Maryland Total		414	333					
Dorchester County	Adventist Behavioral Health Eastern Shore	15	15		√	√		
Eastern Shore Total		15	15					
Maryland State Total		601	497					

Source: Maryland Health Care Commission Survey: Special Hospitals - Psychiatric, June 1, 2015

**Table 30. Inpatient Psychiatric Services Provided at State Special Hospitals - Psychiatric
Maryland, June 1, 2015**

Jurisdiction/ Region	Special Hospital Name	Licensed Psychiatric Beds	Budgeted Psychiatric Beds	Acute Adult	Acute Child	Acute Adolescent	Acute Geriatric	Acute Forensic	Accept Involuntary Patients
Allegany County	Thomas B. Finan Center	119	66					√	√
Western Maryland Total		119	66						
Baltimore County	Spring Grove Hospital Center	639	355	√		√	√	√	√
Carroll County	Springfield Hospital Center	522	228	√			√	√	√
Howard County	Clifton T. Perkins Hospital Center	298	248					√	√
Central Maryland Total		1,459	831						
Dorchester County	Eastern Shore Hospital Center	80	60	√			√	√	√
Eastern Shore Total		80	60						
Maryland State Total		1,658	957						

Source: Maryland Health Care Commission Survey: Special Hospitals - Psychiatric, June 1, 2015. DHMH, Hospital Management Information System. Licensed and budgeted bed totals include both acute and continuing care psychiatric beds.

Partial hospitalization programs (PHP) and intensive outpatient programs (IOP) for psychiatric patients are also provided in the acute care general hospital setting and the special hospital psychiatric setting. PHPs and IOPs are organized day or night programs providing assessment, treatment, habilitation, or rehabilitation services for persons who do not require psychiatric inpatient care on a 24-hour basis. This may be a structured, ongoing program that the patient typically attends two to five times a week for two to five hours per day providing clinical behavioral health services. The plan of care is prescribed by and overseen by a psychiatrist. PHPs may be used as a “step-down” from inpatient care or a “step-up” from less intensive outpatient

programming and are sometimes called “day hospital” programs. Services are usually provided in a group setting for at least four hours of direct clinical care per day, with additional individual and/or family therapy and medication management as needed. IOPs are a subset of PHPs and would typically involve fewer sessions per week and/or fewer hours per daily session. IOPs may be used as a “step-down” from PHPs or a “step-up” from less intensive outpatient care outside of the institutional setting.

MHCC surveyed the availability of PHPs and IOPs at hospitals, requesting information on the maximum number of treatment “slots” available and the daily program census on four specific dates between September, 2014 and June, 2015. Tables 31 and 32 profile these programs as offered in 22 acute care general hospitals and five freestanding private psychiatric hospitals, respectively. State-operated psychiatric hospitals do not provide PHP or IOP services. [NOTE: Average daily census is the average number of patients based on patient census for four specific dates between September, 2014 and June, 2015, as reported by each hospital.]

Table 31. Partial Hospitalization and/or Intensive Outpatient Psychiatric Services at General Hospitals Providing Inpatient Psychiatric Services: Maryland, June 1, 2015

Jurisdiction/ Region	Acute Care General Hospital Name	Partial Hospitalization/ Intensive Outpatient Programs	Maximum Number of Slots Available	Average Patient Census: Partial Hospitalization/ Intensive Outpatient Programs
Allegany County	Western Maryland Regional Medical Center	√	20	5
Frederick County	Frederick Memorial Hospital	√	15	10
	Meritus Medical Center	√	14	3
Western Maryland Total			49	
	Adventist HealthCare Washington Adventist Hospital	√	45	23
	Holy Cross Germantown Hospital	-	-	-
	MedStar Montgomery General Hospital	√	30	24
	Suburban Hospital	√	20	14
Montgomery County Total			95	
Calvert County	Calvert Memorial Hospital	√	30	18
Prince George's County	Laurel Regional Hospital	√	14	12
	MedStar Southern Maryland Hospital Center	√	20	5
	Prince George's Hospital Center	√	12	3
St. Mary's County	MedStar St. Mary's Hospital	√	12	8
Southern Maryland Total			88	
Anne Arundel County	Univ. of MD Baltimore Washington Medical Ctr.	√	16	8
Baltimore City	Bon Secours Hospital	√	19	5
	Johns Hopkins Bayview Medical Center	√	100	71
	MedStar Union Memorial Hospital	√	22	20
	Sinai Hospital of Baltimore	√	18	11
	The Johns Hopkins Hospital	√	32	16
	University of Maryland Medical Center	√	24	5
	University of MD Medical Ctr. Midtown Campus	-	-	-
Baltimore County	MedStar Franklin Square Hospital	-	-	-
	Northwest Hospital	-	-	-
	University of Maryland St. Joseph Hospital	√	25	8
Carroll County	Carroll Hospital Center	√	35	21
Harford County	University of Maryland Harford Memorial Hospital	√	20	9
Howard County	Howard County General Hospital	-	-	-
Central Maryland Total			311	
Cecil County	Union Hospital of Cecil County	-	-	-
Dorchester County	Univ. of MD Shore Mwdical Center at Dorchester	√	16	12
Wicomico County	Peninsula Regional Medical Center	-	-	-
Eastern Shore Total			16	
Maryland State Total			559	

Source: Maryland Health Care Commission survey of psychiatric services capacity, June, 2015.

Table 32. Partial Hospitalization and/or Intensive Outpatient Services at Private Special Hospitals - Psychiatric: Maryland, June 1, 2015

Jurisdiction/Region	Special Hospital - Psychiatric	Partial Hospitalization/ Intensive Outpatient Programs	Maximum Slots Available: Partial Hospitalization/ Intensive Outpatient Programs	Average Daily Census
Washington County	Brook Lane Health Services	√	35	18
	Western Maryland Total		35	
Montgomery County	Adventist Behavioral Health - Rockville	√	40	28
	Montgomery County Total		40	
Baltimore County	Sheppard Pratt Hospital	√	150	96
Howard County	Sheppard Pratt at Ellicott City	√	20	16
	Central Maryland Total		170	
Dorchester County	Adventist Behavioral Health Eastern Shore	√	9	2
	Eastern Shore Total		9	2
	Maryland State Total		254	

Source: Maryland Health Care Commission survey of psychiatric services capacity, June, 2015

The following tables profile psychiatric hospital bed capacity for the three types of hospital settings, across several bed capacity dimensions, including licensed beds, physical bed capacity, and staffed beds. They also provide recent patient day and bed occupancy rate information. In the case of the State psychiatric hospitals, total inpatient days are reported for FY 2014.

Table 33. Inventory and Utilization of Psychiatric Beds at General Acute Care Hospitals

Jurisdiction/Region	Acute Care General Hospitals	Licensed Beds Designated Psychiatric FY 2016	Beds, June 1, 2015		Patient Days CY2014	Staffed Bed Occupancy CY2014
			Physical Bed Capacity	Staffed Beds		
Allegany County	Western Maryland Regional Medical Center	17	19	17	4,452	72%
Frederick County	Frederick Memorial Hospital	21	21	21	7,235	94%
	Meritus Medical Center	16	18	18	4,067	62%
Western Maryland Total		54	58	56	15,754	77%
Montgomery County	Adventist HealthCare Washington Adventist Hospital	40	40	39	9,130	64%
	Holy Cross Germantown Hospital*	6	6	6	282	51%
	MedStar Montgomery General Hospital	20	30	19	4,014	58%
	Suburban Hospital	24	24	24	6,749	77%
Montgomery County Total		90	100	88	20,175	63%
Calvert County	Calvert Memorial Hospital	9	17	9	3,203	98%
Prince George's County	Laurel Regional Hospital	9	18	9	2,795	85%
	MedStar Southern Maryland Hospital Center	25	28	25	5,486	60%
	Prince George's Hospital Center	28	30	28	8,897	87%
St. Mary's County	MedStar St. Mary's Hospital	12	12	6	2,426	111%
Southern Maryland Total		83	105	77	22,807	81%
Anne Arundel County	University of Maryland Baltimore Washington Medical Center	14	14	14	4,819	94%
Baltimore City	Bon Secours Hospital	24	30	24	6,282	72%
	Johns Hopkins Bayview Medical Center	20	20	20	6,278	86%
	MedStar Union Memorial Hospital	26	26	26	8,678	91%
	Sinai Hospital of Baltimore	24	24	24	8,701	99%
	The Johns Hopkins Hospital	108	108	100	33,768	93%
	University of Maryland Medical Center	56	54	54	15,279	78%
	University of Maryland Medical Center Midtown Campus	28	28	28	8,943	88%
Baltimore County	MedStar Franklin Square Hospital	40	40	40	12,439	85%
	Northwest Hospital	23	23	23	7,847	93%
	University of Maryland St. Joseph Medical Center	19	19	19	5,759	83%
Carroll County	Carroll Hospital Center	20	20	16	3,844	66%
Harford County	University of Maryland Harford Memorial Hospital	26	27	20	7,186	98%
Howard County	Howard County General Hospital	20	20	20	5,956	82%
Central Maryland Total		448	453	428	135,779	87%
Cecil County	Union Hospital of Cecil County	11	15	7	2,831	111%
Dorchester County	University of Maryland Shore Medical Center at Dorchester	24	15	15	3,640	66%
Wicomico County	Peninsula Regional Medical Center	12	12	12	3,965	91%
	Eastern Shore Total	47	42	34	10,436	84%
Maryland State Total		722	758	683	204,951	82%

Sources: Licensed beds designated as psychiatric, Maryland Health Care Commission and Office of Health Care Quality, Acute General Hospital Licensed Bed Designation, FY 2016. Physical capacity and staffed beds, MHCC Supplemental Survey: Psychiatric Services Capacity, June 1, 2015. Patient Days, Health Services Cost Review Commission, Discharge Abstract, CY 2014. Staffed Occupancy is calculated as (patient days)/(staffed beds*365)

*Holy Cross Germantown Hospital opened October 1, 2014, the staffed bed occupancy is based on 92 days.

Table 34. Inventory and Utilization of Acute Psychiatric Beds at Private Psychiatric Hospitals: Maryland, 2015

Jurisdiction/Region	Private Special Hospital - Psychiatric	Beds, June 1, 2015			Patient Days CY2014	Staffed Bed Occupancy CY2014
		Licensed Beds	Physical Bed Capacity	Staffed Beds		
Washington County/ Western Maryland	Brook Lane Health Services	65	57	57	12,203	59%
Montgomery County/ Montgomery	Adventist Behavioral Health - Rockville	107	106	106	33,101	89%
Dorchester County/ Eastern Shore	Adventist Behavioral Health - Eastern Shore	15	15	15		
Baltimore County/ Central Maryland	Sheppard Pratt Hospital	322	322	262	100,621	81%
Howard County/ Central Maryland	Sheppard Pratt at Ellicott City	92	92	78		

Sources: Licensed Beds, Office of Health Care Quality; Physical Capacity and Staffed Beds, Maryland Health Care Commission June, 2015 Survey; Psychiatric Service Capacity; Patient Days, Health Services Cost Review Commission, Discharge Database, CY2014.

Staffed Occupancy is calculated using the formula, (patient days)/(staffed beds*365).

Note: Staffed beds may fluctuate/change during the course of the surveyed year

Sheppard Pratt and Adventist Behavioral Health combine their sites' patient data when reporting to HSCRC.

Table 35. Inventory and Utilization of Psychiatric Beds at State Psychiatric Hospitals: Maryland, 2015

Jurisdiction/Region	State Psychiatric Special Hospitals	Beds, June 1, 2015						Patient Days FY 2014	Staffed Bed Occupancy FY 2014
		Licensed Beds	State Budgeted Beds	Physical Bed Capacity		Staffed Beds			
				Acute Care	Continuing Care	Acute Care	Continuing Care		
Allegany County	Thomas B. Finan Center	88	66	66	22	44	22	24,455	102%
Western Maryland Total		88	66	66	22	44	22	24,455	102%
Baltimore County	Spring Grove Hospital Center	639	366	148	335	109	266	133,225	97%
Carroll County	Springfield Hospital Center	522	235	98	151	98	151	84,680	93%
Howard County	Clifton T. Perkins Hospital Center	250	238	19	251	19	221	87,965	100%
Central Maryland Total		1,411	839	265	737	226	638	305,870	97%
Dorchester County	Eastern Shore Hospital Center	80	60	60	0	60	0	21,900	100%
Eastern Shore Total		80	60	60	0	60	0	21,900	100%
Maryland State Total		1,579	965	391	759	330	660	352,225	97%

Source: Staffed beds and physical bed capacity: Maryland Health Care Commission Survey: Special Hospitals - Psychiatric, June 1, 2015; Licensed bed inventory, Office of Health Care Quality, DHMH; budgeted beds, patient days, Hospital Management Information System.

Staffed Occupancy is calculated using the formula, (patient days)/(staffed beds*365).



4160 Patterson Avenue
Baltimore, Maryland 21215
Telephone: (410) 764-3460
FAX: (410) 358-1236
Toll Free: 1 (877) 245-1762
TDD: 1 (800) 735-2258
<http://mhcc.maryland.gov>