

# Annual Report on Selected Maryland Acute Care and Special Hospital Services

Fiscal Year **2017**

Effective July 1, 2016





# Annual Report on Selected Maryland Acute Care and Special Hospital Services

Fiscal Year **2017**



Center for Health Care Facilities  
Planning & Development



## Table of Contents

	<b>Page</b>
Background.....	1
Acute Care Hospital Bed Capacity.....	1
Licensed Acute Care Hospital Beds in Maryland: FY 2017 .....	2
Demand for Hospital Beds in Maryland Compared with Regional and National Trends .....	8
Critical Care Beds.....	12
Monitored Beds.....	14
Hospital System Affiliation.....	16
Total Available Acute Care Bed Capacity.....	19
Observation Services .....	21
Emergency Department/Freestanding Medical Facility Treatment Capacity.....	23
Hospital Surgical Services Capacity.....	27
Obstetric and Perinatal Services Capacity .....	31
Special Hospital Services, Comprehensive Care Facilities in the Hospital Setting, and Hospital-Based Psychiatric Care.....	33
Special Hospital Medical Rehabilitation Services.....	33
Other Special Hospital Services (non-psychiatric).....	34
Comprehensive Care Beds in the Hospital Setting.....	35
Psychiatric Hospital Facilities and Services .....	36

### **Tables and Charts**

#### **Tables:**

1	Licensed Acute Care Beds by Hospital and Service: Maryland, FY 2017 .....	3
2	Trend in Licensed Acute Care Beds by Hospital: Maryland, FY 2008 - 2017 .....	4

3	Percent Change in Total Licensed Acute Care Hospital Beds, by Maryland Region: FY 2007 – 2016 .....	5
4	Change in Number of Total Licensed Acute Care Beds by Region: Maryland Hospitals, FY 2016 - 2017 .....	7
5	Allocation of Licensed Acute Care Beds by Service: Maryland Hospitals, FY 2008 - 2017 .....	8
6	Allocation of Licensed Acute Care Beds by Service (Percentage), Maryland Hospitals, FY2008 - FY2017 .....	8
7	Proportion of Total Population Aged 65 and Older, South Atlantic Census Region States, 2014.....	9
8	Critical Care Bed Inventory: Maryland Hospitals, FY 2017.....	13
9	Licensed Acute Care Beds with Monitoring Capability: Maryland Hospitals, FY 2017 .....	15
10	Trend in Licensed Acute Care Beds by System Affiliation: Maryland Hospitals, FY 20087 – 2017.....	17
11	Multihospital Systems and Hospitals and Beds by System Status in Maryland, F Y 2010 – 2017.....	18
12	Total Available Physical Acute Care Bed Capacity Reported by Maryland Hospitals, June 1, 2016 .....	20
13	Maryland Acute Care General Hospital Observation (OBV) Services, June 1, 2016.....	22
14	Summary – Acute Care Hospital Observation Beds, June 1, 2016 .....	23
15	Change in Emergency Department/Freestanding Medical Facility Treatment Capacity: Maryland, 2015 – 2016.....	24
16	Inventory of Emergency Department/Freestanding Medical Facility Treatment Capacity: Maryland Hospitals: June 1, 2016 .....	25
17	Trends in Emergency Department/Freestanding Medical Facility Treatment Capacity: Maryland Hospitals, June 1, 2009 - June 1, 2016.....	26
18	Surgical Services Capacity by Hospital and Room Use: Maryland Hospitals, June 1, 2016.....	28
19	Dedicated Cesarean Section Operating Rooms and Procedure Rooms by Hospital: Maryland Hospitals, June 1, 2016.....	29
20	Trends in Number of Surgical Rooms: Maryland Hospitals, 2014 – 2016.....	30
21	Obstetric Service Capacity: Maryland Hospitals, June 1, 2016.....	31

22	Newborn Nursery Bassinets, Maryland Hospitals, FY 2016.....	32
23	Inpatient Medical Rehabilitation Facilities and Services by Region and Jurisdiction, June 1, 2016.....	34
24	Licensed Special Hospital and their Special Hospital (Non-Psychiatric and Non- Rehabilitation) Beds, Maryland, June 1, 2016 .....	35
25	Licensed Special Hospitals (Non-Psychiatric and Non-Rehabilitation) Beds, Located on Acute Care Hospital Campuses: Maryland, June 1, 2016 .....	35
26	Licensed Comprehensive Care Beds at Acute Care Hospitals: Maryland, June 1, 2016 .....	36
27	Licensed Comprehensive Care Beds at Special Hospitals: June 1, 2016 .....	36
28	Inpatient Acute Psychiatric Services Available at General Acute Care Hospitals, Maryland, FY 2016 .....	37
29	Inpatient Psychiatric Services Available at Private Special Hospitals – Psychiatric, Maryland, June 1, 2016 .....	38
30	Inpatient Psychiatric Services Provided at State Special Hospitals – Psychiatric, Maryland, June 1, 2016.....	38
31	Partial Hospitalization and/or Intensive Outpatient Psychiatric Services at General Hospitals Providing Inpatient Psychiatric Services, June 1. 2016 .....	40
32	Partial Hospitalization and/or Intensive Outpatient Services at Private Special Hospitals, Psychiatric: June 1, 2016 .....	41
33	Inventory and Utilization of Psychiatric Beds at General Acute Care Hospitals, Maryland, 2016 .....	42
34	Inventory and Utilization of Psychiatric Beds at Private Psychiatric Hospitals: Maryland, 2016.....	43
35	Inventory and Utilization of Psychiatric Beds at State Psychiatric Hospitals: Maryland, 2016.....	43

#### **Charts:**

1	Year to Year Change in Total Licensed Acute Care Beds: Maryland Hospitals, FY 2007 – FY 2016.....	5
2	Total Licensed Acute Care Beds: Maryland Hospitals, FY 2007 – 2016 .....	6
3	Trend in Average Daily Acute Care Patient Census: Maryland Hospitals, CY 1980 – 2014.....	6

4	Hospital Admissions per 1,000 Population, All Hospital Unit Admissions (Excludes NH Unit Admissions) South Atlantic Census Region States 2006 – 2013.....	9
5	Hospital Average Length of Stay, All Hospital Unit Admissions ( Excludes NH Unit Admissions) South Atlantic Census Region States 2006 – 2014.....	10
6	Hospital Admissions per 1,000 Population, All Hospital Unit Admissions (Excludes NH Unit Admissions) U.S. and Maryland, 1994 – 2014.....	11
7	Hospital Average Length of Stay, All Hospital Unit Admissions (Excludes NH Unit Admissions) U.S. and Maryland, 1994 – 2014.....	12
8	Comparison of Multihospital Systems and Non-Multihospital System Hospitals, Maryland, FY 2007 - FY2016.....	18
9	Change in Number of Emergency Treatment Spaces by Type of Space: Maryland, 2007 – 2016.....	27



# **Annual Report on Selected Maryland General and Special Hospital Services: Fiscal Year 2017**

## **Background**

An Annual Report profiling changes in licensed acute care hospital beds in Maryland's acute care hospitals was initiated in 2001 to document and track changes in the licensed bed inventory following implementation of a standardized annual licensure renewal process. The process is based on inpatient census and involves notifying hospitals prior to the beginning of each fiscal year concerning the calculated total number of licensed acute care beds for the coming fiscal year. In turn, the hospitals identify the allocation of the total licensed acute care beds across four (4) service categories: medical/surgical/gynecological/addictions ("MSGA"); obstetric, pediatric, and acute psychiatric services. Overtime, additional information on hospital service capacity, covering emergency department services, surgical services, obstetric, perinatal services, observation and non-acute care bed capacity has been added to the survey undertaken to update acute care bed licensure.

## **Acute Care Hospital Bed Capacity**

Licensed bed capacity for acute care hospitals in the State of Maryland is dynamic, calculated annually based on average daily acute care inpatient census. The Maryland Health Care Commission, in conjunction with the Health Services Cost Review Commission, calculates the average daily census (ADC) of acute care patients for each hospital for the 12-month period ending with the first quarter of each year and total licensed acute care bed capacity is established for the next fiscal year at 140% of the hospital's average daily census. This licensure approach reflects an assumption that an average annual occupancy rate of approximately 71% for acute care hospital beds is an appropriate bench-mark for determining the maximum number of beds an acute care hospital needs to operate.

The initial implementation of this licensure process in FY 2001 resulted in a total of 9,562 licensed acute care beds, removing 2,773 beds from the licensure rolls. Total licensed acute care bed capacity increased, in response to increases in average daily patient census each year after the initial reduction in 2001, peaking at 10,880 beds for FY 2011. The total number of licensed acute care hospital beds in Maryland has declined in every following year, declining to 9,555 beds in the current fiscal year. Thus, Maryland experienced a 13.8% increase in the average daily census of acute care patients between 2000 and 2010 and has experienced a 9.9% decline in acute care ADC between 2010 and 2015.

### **Licensed Acute Care Hospital Beds in Maryland: FY 2017**

Table 1 shows the licensed acute care bed capacity for each acute care hospital, by service, effective July 1, 2016. The calculation of licensed beds for FY 2017, based on each hospital's ADC during the period April 1, 2015 through March 31, 2016, results in a total of 9,555 licensed acute care hospital beds in Maryland. Table 2 shows the ten-year trend in licensed acute care beds by hospital. Table 3 shows the percent change by region.

**Table 1. Licensed Acute Care Beds by Hospital and Service: Maryland, FY 2017**

Jurisdiction/ Region	Hospital	Acute Care Services				
		MSGA	Obstetric	Pediatric	Psychiatric	Total
Allegany County	Western Maryland Regional Medical Center	168	9	2	19	198
Frederick County	Frederick Memorial Hospital	186	27	5	21	239
Garrett County	Garrett County Memorial Hospital	24	2	1	0	27
Washington County	Meritus Medical Center	188	17	4	18	227
<b>WESTERN MARYLAND TOTAL</b>		<b>566</b>	<b>55</b>	<b>12</b>	<b>58</b>	<b>691</b>
Montgomery County	Adventist HealthCare Shady Grove Medical Center	175	56	25	0	256
	Adventist HealthCare Washington Adventist Hospital	145	20	0	39	204
	Holy Cross Germantown Hospital*	75	12	0	6	93
	Holy Cross Hospital of Silver Spring	303	84	22	0	409
	MedStar Montgomery Medical Center	82	11	2	19	114
	Suburban Hospital	195	0	3	24	222
<b>MONTGOMERY COUNTY TOTAL</b>		<b>975</b>	<b>183</b>	<b>52</b>	<b>88</b>	<b>1,298</b>
Calvert County	Calvert Memorial Hospital	60	6	1	9	76
Charles County	University of Maryland Charles Regional Medical Center	73	12	4	0	89
Prince George's County	Doctors Community Hospital	190	0	0	0	190
	Fort Washington Medical Center	32	0	0	0	32
	Laurel Regional Hospital	45	0	0	18	63
	MedStar Southern Maryland Hospital Center	133	30	4	25	192
	Prince George's Hospital Center	169	34	2	28	233
	<i>Total: Prince George's County</i>	<i>569</i>	<i>64</i>	<i>6</i>	<i>71</i>	<i>710</i>
St. Mary's County	MedStar St. Mary's Hospital	73	12	6	12	103
<b>SOUTHERN MARYLAND TOTAL</b>		<b>775</b>	<b>94</b>	<b>17</b>	<b>92</b>	<b>978</b>
Anne Arundel County	Anne Arundel Medical Center	302	60	8	0	370
	University of Maryland Baltimore Washington Medical Center	254	15	10	14	293
	<i>Total: Anne Arundel County</i>	<i>556</i>	<i>75</i>	<i>18</i>	<i>14</i>	<i>663</i>
Baltimore City	Bon Secours Hospital	48	0	0	24	72
	Johns Hopkins Bayview Medical Center	283	22	5	20	330
	MedStar Good Samaritan Hospital	155	0	0	0	155
	MedStar Harbor Hospital	78	24	5	0	107
	MedStar Union Memorial Hospital	181	0	2	26	209
	Mercy Medical Center	146	32	5	0	183
	Sinai Hospital of Baltimore	290	27	26	24	367
	St. Agnes Hospital	239	20	4	0	263
	The Johns Hopkins Hospital	848	35	140	108	1,131
	University of Maryland Medical Center	605	30	59	56	750
	University of Maryland Medical Center Midtown Campus	59	0	0	28	87
	University of Maryland Rehabilitation and Orthopaedics Institute	4	0	0	0	4
	<i>Total: Baltimore City</i>	<i>2,936</i>	<i>190</i>	<i>246</i>	<i>286</i>	<i>3,658</i>
Baltimore County	Greater Baltimore Medical Center	164	60	8	0	232
	MedStar Franklin Square Hospital	267	37	9	40	353
	Northwest Hospital Center	162	0	0	30	192
	University of Maryland St. Joseph Medical Center	189	20	4	19	232
	<i>Total: Baltimore County</i>	<i>782</i>	<i>117</i>	<i>21</i>	<i>89</i>	<i>1,009</i>
Carroll County	Carroll Hospital Center	96	20	7	20	143
Harford County	University of Maryland Harford Memorial Hospital	59	0	0	26	85
	University of Maryland Upper Chesapeake Medical Center	159	10	1	0	170
	<i>Total: Harford County</i>	<i>218</i>	<i>10</i>	<i>1</i>	<i>26</i>	<i>255</i>
Howard County	Howard County General Hospital	204	34	6	20	264
<b>CENTRAL MARYLAND TOTAL</b>		<b>4,792</b>	<b>446</b>	<b>299</b>	<b>455</b>	<b>5,992</b>
Cecil County	Union Hospital of Cecil County	64	5	3	11	83
Dorchester County	University of Maryland Shore Medical Center at Dorchester	22	0	0	24	46
Kent County	University of Maryland Shore Medical Center at Chestertown	25	0	1	0	26
Somerset County	Edward W. McCready Memorial Hospital	3	0	0	0	3
Talbot County	University of Maryland Shore Medical Center at Easton	87	17	8	0	112
Wicomico County	Peninsula Regional Medical Center	241	20	8	12	281
Worcester County	Atlantic General Hospital	45	0	0	0	45
<b>EASTERN SHORE TOTAL</b>		<b>487</b>	<b>42</b>	<b>20</b>	<b>47</b>	<b>596</b>
<b>MARYLAND TOTAL</b>		<b>7,595</b>	<b>820</b>	<b>400</b>	<b>740</b>	<b>9,555</b>

Source: Maryland Health Care Commission, Acute Care Hospital Inventory (ACHI) FY2017.

**Table 2. Trend in Licensed Acute Care Beds by Hospital: Maryland, FY 2008 - 2017**

Jurisdiction/Region	Hospital	2008	2009	2010	2011	2012	2013	2014	2015	2016	2017
Allegany County	Braddock Hospital	155	154	-	-	-	-	-	-	-	-
	Memorial Hosp. & Med. Ctr. of Cumberland	109	117	-	-	-	-	-	-	-	-
	Western Maryland Regional Medical Center	-	-	262	252	250	234	200	192	195	198
	<i>Total: Allegany County</i>	264	271	262	252	250	234	200	192	195	198
Frederick County	Frederick Memorial Hospital	246	269	274	276	309	298	297	258	233	239
Garrett County	Garrett County Memorial Hospital	34	36	33	31	30	29	26	23	25	27
Washington County	Meritus Medical Center	264	258	260	258	252	245	237	231	223	227
	<b>WESTERN MARYLAND TOTAL</b>	<b>808</b>	<b>834</b>	<b>829</b>	<b>817</b>	<b>841</b>	<b>806</b>	<b>760</b>	<b>704</b>	<b>676</b>	<b>691</b>
Montgomery County	Adventist HealthCare Shady Grove Medical Center	275	293	320	336	339	331	312	305	290	256
	Adventist HealthCare Washington Adventist Hospital	294	292	288	281	271	252	252	232	230	204
	Holy Cross Germantown Hospital*	-	-	-	-	-	-	-	-	93	93
	Holy Cross Hospital	404	408	404	402	409	396	397	391	423	409
	MedStar Montgomery General Hospital	149	165	170	159	158	138	132	120	122	114
	Suburban Hospital	228	238	239	222	233	229	236	220	236	222
	<b>MONTGOMERY COUNTY TOTAL</b>	<b>1,350</b>	<b>1,396</b>	<b>1,421</b>	<b>1,400</b>	<b>1,410</b>	<b>1,346</b>	<b>1,329</b>	<b>1,268</b>	<b>1,394</b>	<b>1,298</b>
Calvert County	Calvert Memorial Hospital	105	106	98	98	95	95	92	85	77	76
Charles County	Univ. of MD Charles Regional Medical Center	121	129	120	120	124	110	121	115	110	89
Prince George's County	Doctors Community Hospital	192	195	190	195	219	207	198	182	163	190
	Fort Washington Medical Center	42	43	43	42	41	31	33	31	34	32
	Laurel Regional Hospital	95	97	95	87	83	77	78	74	60	63
	MedStar Southern Maryland Hospital Center	258	255	246	235	238	239	227	207	208	192
	Prince George's Hospital Center	264	246	254	244	242	224	214	215	237	233
	<i>Total: Prince George's County</i>	851	836	828	803	823	778	750	709	702	710
St. Mary's County	MedStar St. Mary's Hospital	108	108	103	96	90	90	89	82	91	103
	<b>SOUTHERN MARYLAND TOTAL</b>	<b>1,185</b>	<b>1,179</b>	<b>1,149</b>	<b>1,117</b>	<b>1,132</b>	<b>1,073</b>	<b>1,052</b>	<b>991</b>	<b>980</b>	<b>978</b>
Anne Arundel County	Anne Arundel Medical Center	278	301	316	324	336	380	385	384	375	370
	Univ. of MD Baltimore Washington Medical Center	293	298	311	321	308	307	319	310	303	293
	<i>Total: Anne Arundel County</i>	571	599	627	645	644	687	704	694	678	663
Baltimore City	Bon Secours Hospital	151	125	126	141	127	115	107	88	72	72
	Johns Hopkins Bayview Medical Center	333	345	346	348	348	355	355	337	341	330
	MedStar Good Samaritan Hospital	265	245	236	235	222	224	206	177	165	155
	MedStar Harbor Hospital	203	215	221	193	179	160	136	120	113	107
	MedStar Union Memorial Hospital	283	292	295	271	231	236	221	205	211	209
	Mercy Medical Center	235	243	244	244	226	233	225	207	184	183
	Sinai Hospital of Baltimore	398	415	413	424	416	426	421	407	392	367
	St. Agnes Hospital	314	307	318	314	296	287	276	264	251	263
	The Johns Hopkins Hospital	982	979	990	994	992	1,000	1,060	1,082	1,129	1,131
	University of Maryland Medical Center	689	705	731	757	779	800	816	801	772	750
	Univ. of MD Medical Center Midtown Campus	209	191	180	167	164	155	128	110	107	87
	Univ. of MD Rehabilitation & Orthopaedic Institute	10	11	10	10	9	9	10	10	7	4
	<i>Total: Baltimore City</i>	4,072	4,073	4,110	4,098	3,989	4,000	3,961	3,808	3,744	3,658
Baltimore County	Greater Baltimore Medical Center	298	310	300	285	281	270	255	245	231	232
	MedStar Franklin Square Hospital	362	380	371	376	347	355	347	354	364	353
	Northwest Hospital Center	213	218	221	215	221	225	243	245	199	192
	Univ. of MD St. Joseph Medical Center	364	354	345	300	263	247	232	238	247	232
	<i>Total: Baltimore County</i>	1,237	1,262	1,237	8,841	1,112	1,097	1,077	1,082	1,041	1,009
Carroll County	Carroll Hospital Center	216	218	213	195	189	158	151	147	140	143
Harford County	Univ. of MD Harford Memorial Hospital	91	104	105	101	97	89	89	84	84	85
	Univ. of MD Upper Chesapeake Medical Center	168	182	196	186	175	181	185	183	180	170
	<i>Total: Harford County</i>	259	286	301	287	272	270	274	267	264	255
Howard County	Howard County General Hospital	219	209	227	238	249	249	253	259	266	264
	<b>CENTRAL MARYLAND TOTAL</b>	<b>6,574</b>	<b>6,647</b>	<b>6,715</b>	<b>6,639</b>	<b>6,455</b>	<b>6,461</b>	<b>6,420</b>	<b>6,257</b>	<b>6,133</b>	<b>5,992</b>
Cecil County	Union Hospital of Cecil County	105	116	113	113	106	92	85	75	84	83
Dorchester County	Univ. of MD Shore Medical Center at Dorchester	49	54	54	53	52	46	41	39	47	46
Kent County	Univ. of MD Shore Medical Center at Chestertown	62	57	53	47	46	42	41	31	30	26
Somerset County	Edward W. McCready Memorial Hospital	8	9	8	8	9	5	4	4	4	3
Talbot County	Univ. of MD Shore Medical Center at Easton	123	120	125	120	116	112	112	112	112	112
Wicomico County	Peninsula Regional Medical Center	366	362	358	362	363	317	288	275	292	281
Worcester County	Atlantic General Hospital	51	53	55	53	53	48	45	48	48	45
	<b>EASTERN SHORE TOTAL</b>	<b>764</b>	<b>771</b>	<b>766</b>	<b>756</b>	<b>745</b>	<b>662</b>	<b>616</b>	<b>584</b>	<b>617</b>	<b>596</b>
	<b>MARYLAND TOTAL</b>	<b>10,681</b>	<b>10,827</b>	<b>10,880</b>	<b>10,729</b>	<b>10,583</b>	<b>10,348</b>	<b>10,177</b>	<b>9,804</b>	<b>9,800</b>	<b>9,555</b>

Source: Maryland Health Care Commission, ACHI, FY2017

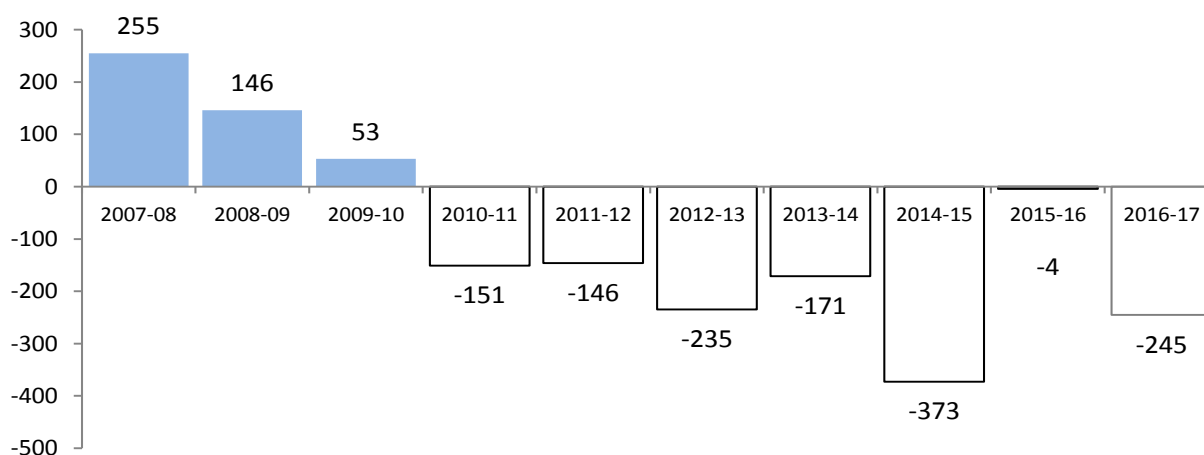
**Table 3. Percent Change in Total Licensed Acute Care Hospital Beds,  
By Maryland Region: Fiscal Years 2008 - 2017**

Region	2008	2009	2010	2011	2012	2013	2014	2015	2016	2017	Average Annual Change 2008 - 2017
Western Maryland	5.1%	3.2%	-0.6%	-1.4%	2.9%	-4.2%	-5.7%	-7.4%	-4.0%	2.2%	-1.0%
Montgomery County	4.8%	3.4%	1.8%	-1.5%	0.7%	-4.5%	-1.3%	-4.6%	9.9%	-6.9%	0.2%
Southern Maryland	1.3%	-0.5%	-2.5%	-2.8%	1.3%	-5.2%	-2.0%	-5.8%	-1.1%	-0.2%	-1.8%
Central Maryland	2.1%	1.1%	1.0%	-1.1%	2.8%	0.1%	-0.6%	-2.5%	-2.0%	-2.3%	-0.1%
Eastern Shore	0.7%	0.9%	-0.6%	-1.3%	1.5%	-11.1%	-6.9%	-5.2%	5.7%	-3.4%	-2.0%
Maryland Total	2.4%	1.4%	0.5%	-1.4%	-1.4%	-2.2%	-1.7%	-3.7%	0.0%	-2.5%	-0.9%

Source: Maryland Health Care Commission, ACHI FY2008 - FY2017

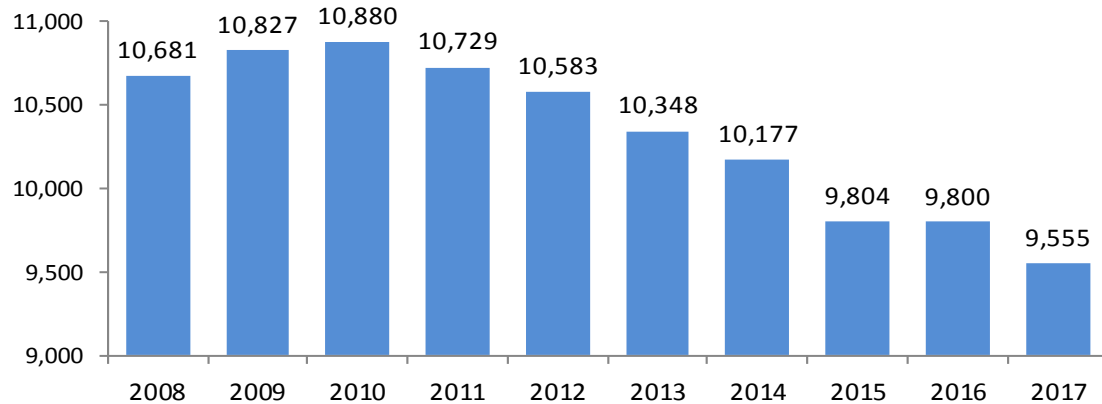
Chart 1 displays the annual net change in licensed acute care beds over the last ten years, while Chart 2 shows the total number of licensed beds over the same period;

**Chart 1. Year to Year Change in Total Licensed Acute Care  
Beds: Maryland Hospitals, FY 2007 - 2017**



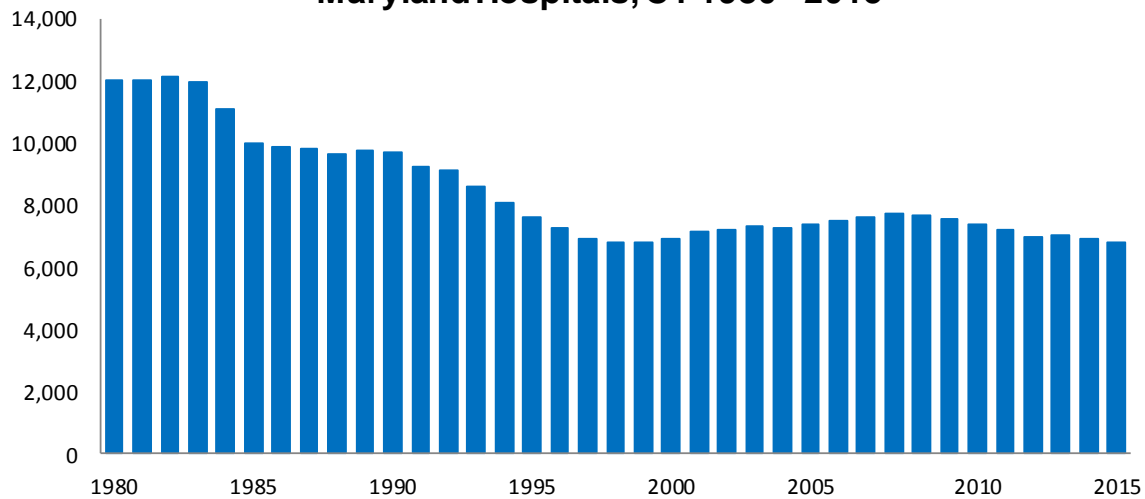
Source: Maryland Health Care Commission, ACHI, FY2007 - FY 2017

**Chart 2. Total Licensed Acute Care Beds:  
Maryland Hospitals, FY 2008 - 2017**



Source: Maryland Health Care Commission, ACHI, FY2008 - FY2017

**Chart 3. Trend in Average Daily Acute Care Patient Census:  
Maryland Hospitals, CY 1980 - 2015**



Source: Maryland Health Care Commission. Note: Data reported is based on the Hospital Discharge Abstract Data Base for calendar years 1980 - 2015 and reflects the average daily census for all services excluding newborn and rehabilitation services.

While the average daily census of acute care patients began to gradually trend upward in the late 1990's, hospital utilization in Maryland never returned to historic peaks. During calendar year 2009 average daily census saw the first decline since dynamic hospital bed licensure went into effect in 2001. The average daily census declined again in calendar year 2010. Chart 3 shows the trend of declining acute care census from the early 1980s through the late 1990s, the extent of the rebound in census that occurred in the next ten years and the recent return to gradual decline after 2008.

Table 4 profiles the FY 2016 - 2017 change in total licensed acute care hospital beds from a regional perspective. The State as a whole experienced an overall decrease of 245 beds, a drop of 2.5%. Four (4) Maryland health planning regions saw licensed bed capacity decline in FY 2017, with Montgomery County experiencing the largest decline (6.9%). Western Maryland saw an increase of 2.2% in licensed acute care beds. Statewide, twelve (12) hospitals saw an increase in bed capacity, thirty-two (32) hospitals saw a decline in bed capacity and three (3) hospitals had no change in bed capacity from the previous year.

**Table 4. Change in Number of Total Licensed Acute Care Beds by Region:  
Maryland Hospitals, FY 2016 - FY 2017**

Region	Total Number of Hospitals	Net Change in Number of Total Licensed Beds	Percent Change	Number of Hospitals with an Increase in Beds	Number of Hospitals with a Decrease in Beds	Number of Hospitals with No Change in Hospital Beds
Western Maryland	4	15	2.2%	4	0	0
Montgomery County	6	(96)	-6.9%	0	5	1
Southern Maryland	8	(2)	-0.2%	3	5	0
Central Maryland	22	(141)	-2.3%	5	16	1
Eastern Shore	7	(21)	-3.4%	0	6	1
<b>MARYLAND TOTAL</b>	<b>47</b>	<b>(245)</b>	<b>-2.5%</b>	<b>12</b>	<b>32</b>	<b>3</b>

Source: Maryland Health Care Commission, ACHI FY2017

Tables 5 and 6 profile the change in the inventory of licensed acute care hospital beds for the past ten fiscal years for the four acute care bed service categories. As can be seen, there have been no dramatic changes in the allocation of acute care beds by Maryland's hospitals over this period, with MSGA beds accounting for an average of 80% of total acute care beds, obstetric beds comprising an average of 8%, acute psychiatric beds, on average, 7% of total, and pediatric beds, 4% of total. Licensed bed capacity allocated to psychiatric services is the only service category of the four that saw consistent growth over this ten year period.

**Table 5. Allocation of Licensed Acute Care Beds by Service  
Maryland Hospitals, FY2008 - FY2017**

Service Category	2008	2009	2010	2011	2012	2013	2014	2015	2016	2017
MSGA	8,694	8,827	8,890	8,738	8,590	8,352	8,198	7,835	7,850	7,595
Obstetric	848	854	851	848	851	851	827	823	832	820
Pediatric	458	459	451	452	447	442	438	422	396	400
Acute Psychiatric	681	687	688	691	695	703	714	724	722	740
TOTAL	10,681	10,827	10,880	10,729	10,583	10,348	10,177	9,804	9,800	9,555

Source: Maryland Health Care Commission, ACHI FY2008 - FY2017

**Table 6. Allocation of Licensed Acute Care Beds by Service (Percentage),  
Maryland Hospitals, FY 2008 - FY 2017**

Service Category	2008	2009	2010	2011	2012	2013	2014	2015	2016	2017
MSGA	81.4%	81.5%	81.7%	81.4%	81.2%	80.7%	80.6%	79.9%	80.1%	79.5%
Obstetric	7.9%	8.0%	7.8%	7.9%	8.0%	8.2%	8.1%	8.4%	8.5%	8.6%
Pediatric	4.3%	4.2%	4.1%	4.2%	4.2%	4.3%	4.3%	4.3%	4.0%	4.2%
Acute Psychiatric	6.4%	6.3%	6.3%	6.4%	6.6%	6.8%	7.0%	7.4%	7.4%	7.7%
TOTAL	100%	100%	100%	100%	100%	100%	100%	100%	100%	100%

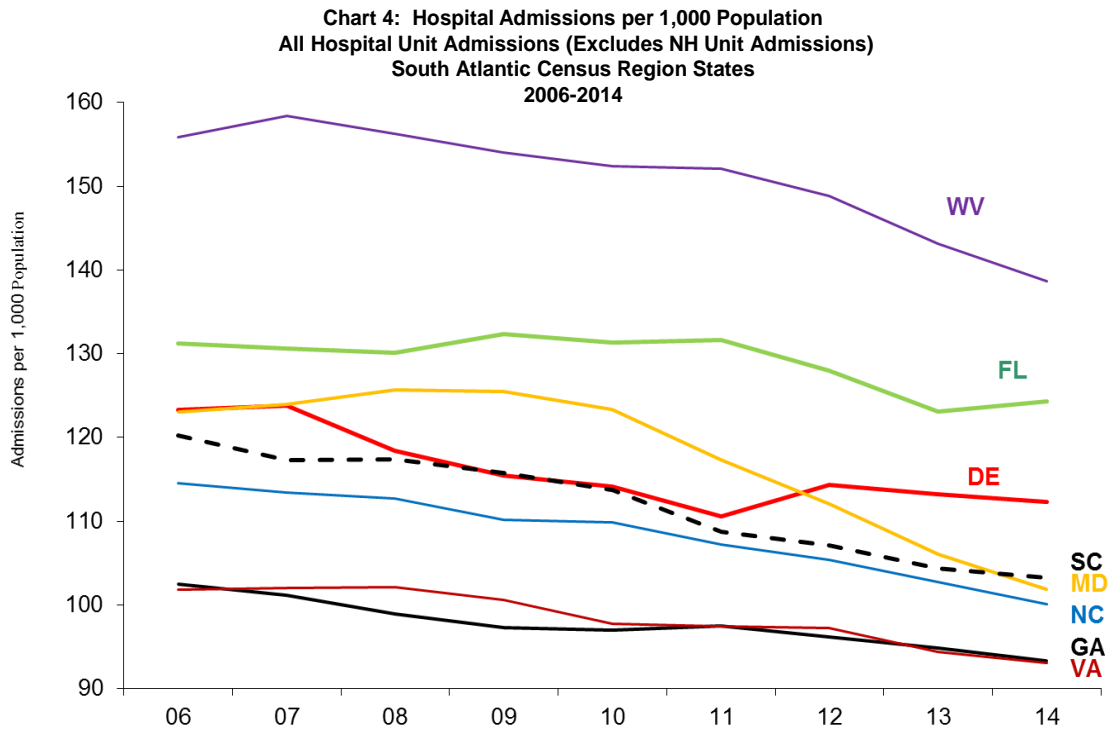
Source: Maryland Health Care Commission

### **Demand for Hospital Beds in Maryland Compared with Regional and National Trends**

The following graphs profile information from *Hospital Statistics*, an annual publication of the American Hospital Association. They reflect this publication's reported acute care hospital use rates and average stay statistics for Maryland and contrasts the demand reported for other Southeastern States and the U.S. experience.

The first two graphs compare hospital admissions per thousand population and average length of hospital stay in Maryland with the experience of the seven other states in the South Atlantic Census Region. This data is not age-adjusted. The relative age of the population in these states is an important factor in interpreting these hospital use rates. Florida and West Virginia are the oldest states in this region. The U.S. Census Bureau estimates that 19.4% and 18.2%, respectively, of the total 2015 estimated population of these two states was aged 65 or older. Delaware, South Carolina, and North Carolina are the next oldest, with 17%, 16.2%, and 15.1% of total population, respectively, aged 65+. Virginia and Maryland have very similar elderly age bands, 14.2% and 14.1%, respectively. Georgia is the youngest state in this region at 12.8% of its estimated population estimated to be 65 and older.





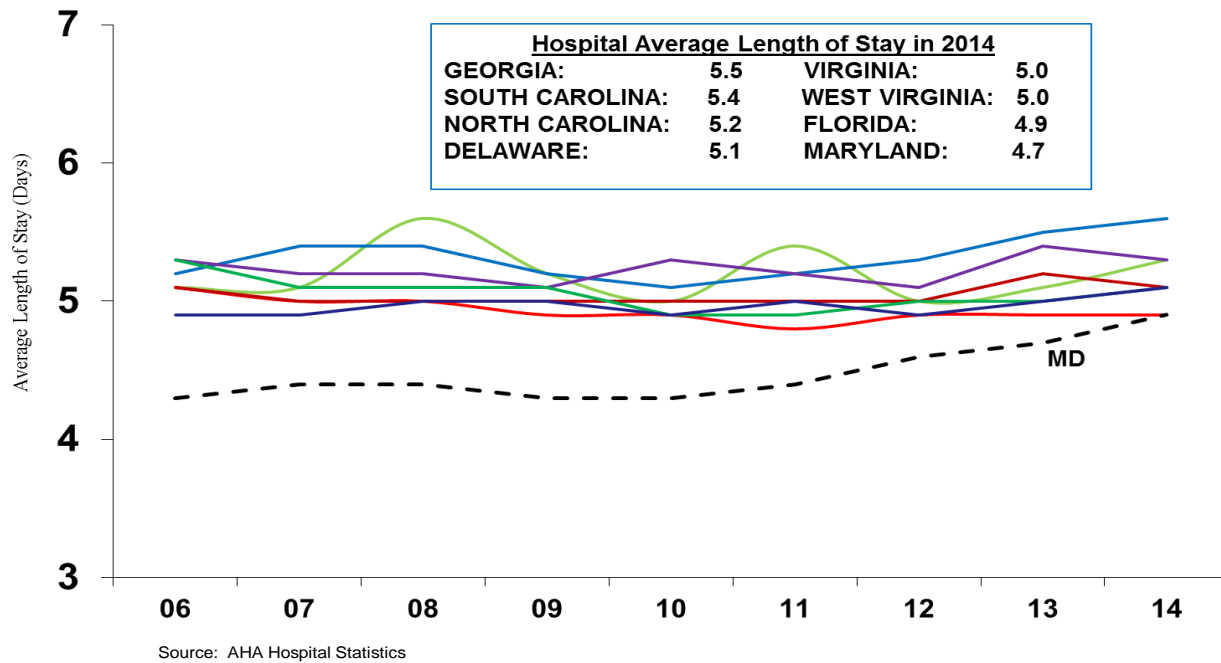
Source: AHA Hospital Statistics (2012-2015 Editions)

**Table 7.**  
**Proportion of Total Population Aged 65 and Older**  
**South Atlantic Census Region States, 2014**

State	Percentage of Population Aged 65 and Older
Florida	19.4%
West Virginia	18.2%
Delaware	17.0%
South Carolina	16.2%
North Carolina	15.1%
Virginia	14.2%
Maryland	14.1%
Georgia	12.8%

Source: U.S. Census Bureau, Estimated 2014

**Chart 5: Hospital Average Length of Stay  
All Hospital Unit Admissions (Excludes NH Unit Admissions)  
South Atlantic Census Region States  
2006-2014**



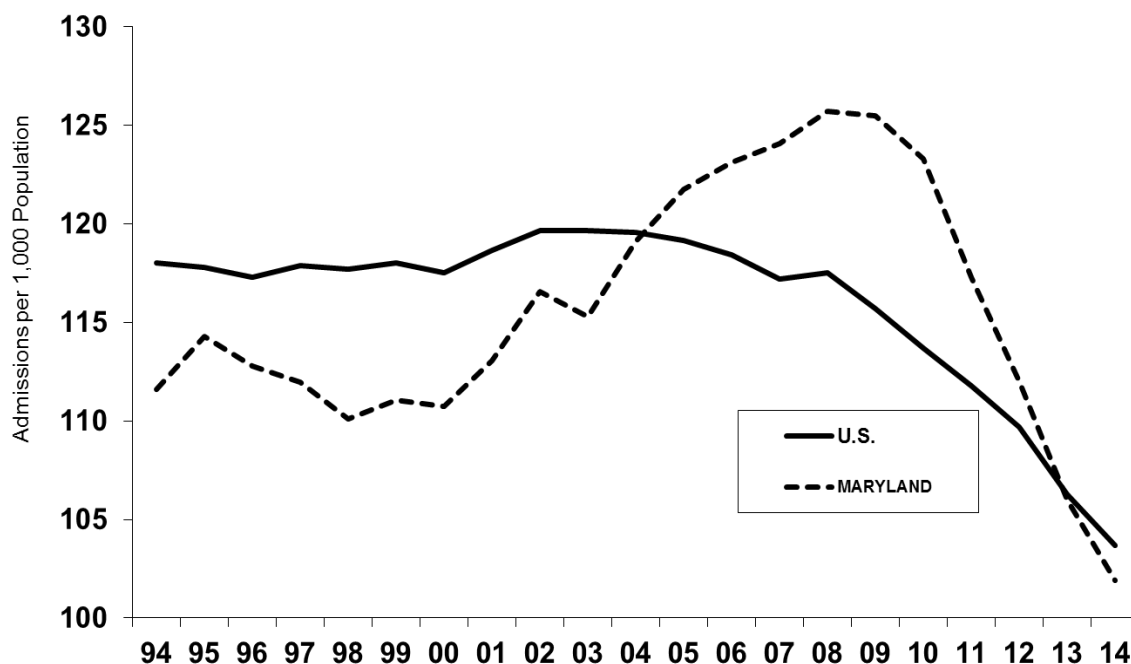
As will be noted, from a regional perspective, Maryland's admissions rate has been lower than that of the states in the South Atlantic region with a higher percentage of population aged 65 and older, Florida and West Virginia, as would be expected. Maryland's admissions rate was substantially higher, for the most part, in the early years of this time period compared with that of the Carolinas or Delaware, states with populations only slightly older than that of Maryland, and was much higher than Virginia's hospital use rate, a state with a very similarly sized elderly population. However, beginning in 2010, Maryland's admissions rate has declined more steeply than that of any other state in this region.

Maryland stands out as having a distinctly shorter average length of hospital stay, when compared with these other states, as shown in Chart 5. The ALOS gap is closing however, indicating that Maryland's decline in admissions was largely due to reductions in short-stay hospitalizations.

The following graphs, Chart 6 and Chart 7, taken from the same data source, provide a longer-term perspective on Maryland and the Nation. Maryland had an enviable record with respect to admissions rate and average length of hospital stay in the 1990s but this changed during the previous decade. Hospital use rates in Maryland peaked in the 2008-09 period, at approximately 8-9% higher than the overall National use rate but have steeply declined in the following years.

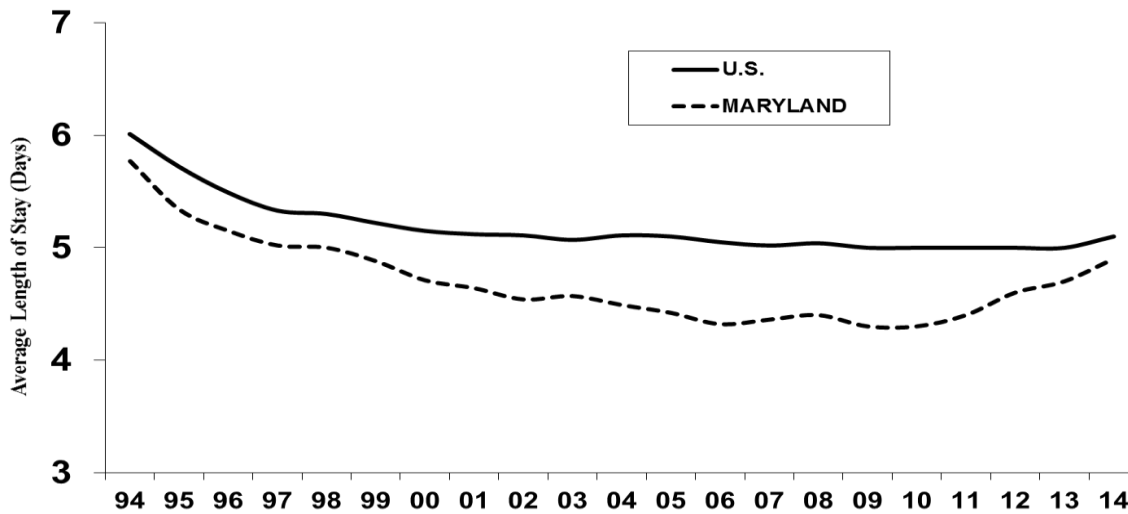
Maryland has been steadily discharging hospital patients more quickly, on average, than has been the National experience. Similar to the regional trend shown previously, there has been a narrowing of the gap between Maryland's ALOS and that of the U.S. over the last twenty years, as Maryland hospitals have reduced short stays, in many cases, replacing such stays with "observation" services that are outpatient care and are not recorded as hospital admissions in the AHA survey data. The House Services Cost Review Commission initiated policy changes in recent years aimed at reducing short-stay admissions, prompted by data indicating a relatively high proportion of one-day stays in the State. Further narrowing of the gap between Maryland and the nation with respect to hospital length of stay can be anticipated.

**Chart 6: Hospital Admissions per 1,000 Population**  
**All Hospital Unit Admissions (Excludes NH Unit Admissions)**  
**U.S. and Maryland**  
**1994-2014**



Source: AHA Hospital Statistics (Average of Published Rates, 2000, 2002-2007, 2009-2016 Editions)

**Chart 7: Hospital Average Length of Stay  
All Hospital Unit Admissions (Excludes NH Unit Admissions)  
U.S. and Maryland  
1994-2014**



SOURCE: AHA HOSPITAL STATISTICS

Note concerning the AHA data: The American Hospital Association (AHA) conducts an annual survey of all hospitals, both AHA-registered and nonregistered, in the U.S. and its associated areas. AHA reports, overall, the average response rate over the past five years has been approximately 85 percent.

## **Critical Care Beds**

Table 8 shows the FY 2017 inventory of critical care beds, which in the case of adult critical care beds, are a subset of MSGA beds. Adult critical care beds comprise 16.5% of the state's licensed MSGA bed inventory, ranging from 9.0% in Western Maryland to 17.5% in both Montgomery County and Central Maryland. Pediatric critical care beds comprise 16.8% of the state's licensed pediatric bed inventory.

**Table 8. Critical Care Bed Inventory:**  
**Maryland Hospitals, FY 2017**

Jurisdiction/Region	Hospital	Critical Care Beds	
		Adult	Pediatric
Allegany County	Western Maryland Regional Medical Center	17	
Frederick County	Frederick Memorial Hospital	18	
Garrett County	Garrett County Memorial Hospital	2	
Washington County	Meritus Medical Center	14	
<b>WESTERN MARYLAND TOTAL</b>		<b>51</b>	<b>0</b>
Montgomery County	Adventist HealthCare Shady Grove Medical Center	28	
	Adventist HealthCare Washington Adventist Hospital	26	
	Holy Cross Germantown Hospital	15	
	Holy Cross Hospital	46	
	MedStar Montgomery General Hospital	12	
	Suburban Hospital	44	
<b>MONTGOMERY COUNTY TOTAL</b>		<b>171</b>	<b>0</b>
Calvert County	Calvert Memorial Hospital	4	
Charles County	University of Maryland Charles Regional Medical Center	10	
Prince George's County	Doctors Community Hospital	24	
	Fort Washington Medical Center	4	
	Laurel Regional Hospital	10	
	MedStar Southern Maryland Hospital	18	
	Prince George's Hospital Center	34	
St. Mary's County	MedStar St. Mary's Hospital	12	
<b>SOUTHERN MARYLAND TOTAL</b>		<b>116</b>	<b>0</b>
Anne Arundel County	Anne Arundel Medical Center	20	
Baltimore City	University of Maryland Baltimore Washington Medical Center	33	
	Bon Secours Hospital	8	
	Johns Hopkins Bayview Medical Center	52	
	MedStar Good Samaritan Hospital	17	
	MedStar Harbor Hospital	14	
	MedStar Union Memorial Hospital	51	
	Mercy Medical Center	24	
	Sinai Hospital at Baltimore	35	6
	St. Agnes Hospital	28	1
	The Johns Hopkins Hospital	116	40
	University of Maryland Medical Center	276	19
	University of Maryland Medical Center Midtown Campus	13	
Baltimore County	University of Maryland Rehabilitation and Orthopaedics Institute	0	
	Greater Baltimore Medical Center	24	
	MedStar Franklin Square Hospital	26	
	Northwest Hospital Center	14	
	University of Maryland St. Joseph Medical Center	38	
Carroll County	Carroll Hospital Center	12	
Harford County	University of Maryland Harford Memorial Hospital	6	
Howard County	University of Maryland Upper Chesapeake Medical Center	14	
	Howard County General Hospital	16	
<b>CENTRAL MARYLAND TOTAL</b>		<b>837</b>	<b>66</b>
Cecil County	Union Hospital of Cecil County	6	
Dorchester County	University of Maryland Shore Medical Center at Dorchester	6	
Kent County	University of Maryland Shore Medical Center at Chestertown	6	
Somerset County	Edward W. McCready Memorial Hospital	0	
Talbot County	University of Maryland Shore Medical Center at Easton	10	
Wicomico County	Peninsula Regional Medical Center	42	
Worcester County	Atlantic General Hospital	6	
<b>EASTERN SHORE TOTAL</b>		<b>76</b>	<b>0</b>
<b>MARYLAND STATE TOTAL</b>		<b>1,251</b>	<b>66</b>

Source: Maryland Health Care Commission: Critical Care Bed Capacity FY2017. Note: Adult critical care beds include all medical surgical intensive care and coronary care beds and excludes definitive observation/stepdown beds, pediatric intensive care beds and NICU bassinets. Adult critical care beds are part of the larger MSGA inventory.

\*Johns Hopkins Bayview includes 10 Burn Critical Care Beds, and University of Maryland Medical Center includes 115 Shock Trauma Beds.

## **Monitored Beds**

Monitored beds are beds which the hospital identified as equipped with cardiac monitoring. “Monitored” means that cardiac monitoring is available for identified hospital beds. Previously this meant a bed was hard-wired for cardiac monitoring. With the institution of remote centralized monitoring, a wireless transmitting system that can be viewed on a central surveillance system, cardiac monitoring is no longer dependent on a stationary bed being hard wired. Wireless monitoring can detect early warning signs and changes in a patient’s condition through the continuous automated collection of key vital signs.

Table 9 identifies the proportion of total licensed acute care beds, by hospital, which the hospital identified as equipped with cardiac monitoring.

From FY 2008 to FY 2012, the number of monitored beds reported by Maryland’s acute care general hospitals increased 32%, this compares to the 18%, increase from FY 2008 to FY 2011, in part due to the increase of monitoring capability with the introduction of wireless centralized systems. While monitored beds as a percentage of all licensed beds, from FY 2008 to FY 2011 increased an average of 5.6% per year, in FY 2013, the increase in monitored beds was 12%. The number of monitored beds reported by Maryland’s acute care hospitals increased from 55% of total licensed beds in FY 2013 to 65.6% in FY2017.

In addition to collecting monitored bed inventories for licensed acute care beds, MHCC also compiles that data for bassinets for hospitals that provide obstetrical and newborn nursery services. Thirty-two hospitals provide obstetric and perinatal services and report a combined total of 1,402 newborn nursery bassinets; of these bassinets, 548 (39.1%) have monitoring capability.

**Table 9. Licensed Acute Care Beds with Monitoring Capability:  
Maryland Hospitals, FY2017**

<b>Jurisdiction/Region</b>	<b>Hospital Name</b>	<b>FY 2017 Licensed Beds</b>	<b>Monitorable Beds</b>	<b>Monitorable as % of Licensed Beds</b>
Allegany County Frederick County Garrett County Washington County	Western Maryland Regional Medical Center	198	79	39.9%
	Frederick Memorial Hospital	239	218	91.2%
	Garrett County Memorial Hospital	27	27	100.0%
	Meritus Medical Center	227	219	96.5%
	<b>WESTERN MARYLAND TOTAL</b>	<b>691</b>	<b>543</b>	<b>78.6%</b>
Montgomery County	Adventist HealthCare Shady Grove Medical Center	256	175	68.4%
	Adventist HealthCare Washington Adventist Hospital	204	145	71.1%
	Holy Cross Germantown Hospital	<b>93</b>	<b>75</b>	<b>80.6%</b>
	Holy Cross Hospital	409	221	54.0%
	MedStar Montgomery General Hospital	114	46	40.4%
	Suburban Hospital	222	120	54.1%
	<b>MONTGOMERY COUNTY TOTAL</b>	<b>1,298</b>	<b>782</b>	<b>60.2%</b>
Calvert County Charles County Prince George's County  St. Mary's County	Calvert Memorial Hospital	76	42	55.3%
	University of Maryland Charles Regional Medical Center	89	89	100.0%
	Doctors Community Hospital	190	89	46.8%
	Fort Washington Medical Center	32	28	87.5%
	Laurel Regional Hospital	63	37	58.7%
	MedStar Southern Maryland Hospital Center	192	153	79.7%
	Prince George's Hospital Center	233	118	50.6%
	MedStar St. Mary's Hospital	103	56	54.4%
	<b>SOUTHERN MARYLAND TOTAL</b>	<b>978</b>	<b>612</b>	<b>62.6%</b>
Anne Arundel County  Baltimore City          Baltimore County   Carroll County Harford County Howard County	Anne Arundel Medical Center	370	310	83.8%
	University of Maryland Baltimore Washington Medical Center	293	164	56.0%
	Bon Secours Hospital	72	50	69.4%
	Johns Hopkins Bayview Medical Center	330	159	48.2%
	MedStar Good Samaritan Hospital of Maryland	155	73	47.1%
	MedStar Harbor Hospital	107	97	90.7%
	MedStar Union Memorial Hospital	209	127	60.8%
	Mercy Medical Center	183	113	61.7%
	Sinai Hospital of Baltimore	367	191	52.0%
	St. Agnes Hospital	263	159	60.5%
	The Johns Hopkins Hospital	1,131	684	60.5%
	University of Maryland Medical Center	750	750	100.0%
	University of Maryland Medical Center Midtown Campus	87	78	89.7%
	University of Maryland Rehabilitation & Orthopaedic Institute	4	4	100.0%
	Greater Baltimore Medical Center	232	82	35.3%
	MedStar Franklin Square Hospital	353	162	45.9%
	Northwest Hospital Center	192	62	32.3%
	University of Maryland St. Joseph Medical Center	232	188	81.0%
	Carroll Hospital Center	143	63	44.1%
	University of Maryland Harford Memorial Hospital	85	67	78.8%
	University of Maryland Upper Chesapeake Medical Center	170	149	87.6%
	Howard County General Hospital	264	126	47.7%
	<b>CENTRAL MARYLAND TOTAL</b>	<b>5,992</b>	<b>3,858</b>	<b>64.4%</b>
Cecil County Dorchester County Kent County Somerset County Talbot County Wicomico County Worcester County	Union Hospital of Cecil County	83	83	100.0%
	University of Maryland Shore Medical Center at Dorchester	46	16	34.8%
	University of Maryland Shore Medical Center at Chestertown	26	26	100.0%
	Edward W. McCready Memorial Hospital	3	3	100.0%
	University of Maryland Shore Medical Center at Easton	112	46	41.1%
	Peninsula Regional Medical Center	281	269	95.7%
	Atlantic General Hospital	45	32	71.1%
	<b>EASTERN SHORE TOTAL</b>	<b>596</b>	<b>475</b>	<b>79.7%</b>
<b>STATE TOTAL</b>		<b>9,555</b>	<b>6,270</b>	<b>65.6%</b>

Source: MHCC Supplemental Survey: Inpatient Monitoring Capacity, FY2017. Data are self reported. Capacity for inpatient monitoring means cardiac monitoring is available for the reported numbers of beds. Note: The calculated percentage reflects total licensed beds and does not necessarily reflect the actual complement of beds set up and staffed by the hospital.

## **Hospital System Affiliation**

Table 10 profiles the trend in licensed acute care beds for hospitals that are members of a multihospital system. Sixty percent of Maryland general hospitals are part of the state's six multi-hospital systems.

Chart 8 shows the number of Maryland hospitals and beds that are part of a multihospital system and the number of hospitals and beds that are not part of a multihospital system in Maryland. Although there was little change from 2001 through 2007, the following seven (7) years saw an increase in the number of hospitals joining multihospital systems. FY2015 through FY2017 saw no additional hospitals joining a multi-hospital system. Holy Cross Germantown Hospital opened in 2016 as a non-system Hospital increasing the total number of non- system hospitals.

Table 11 compares the growth and annual change in the number of hospitals and beds that are part of Maryland multi-hospital systems with hospitals that are independent reflecting the annual percent change in the distribution of beds and the change during the last eight years (FY 2010 to FY 2017).

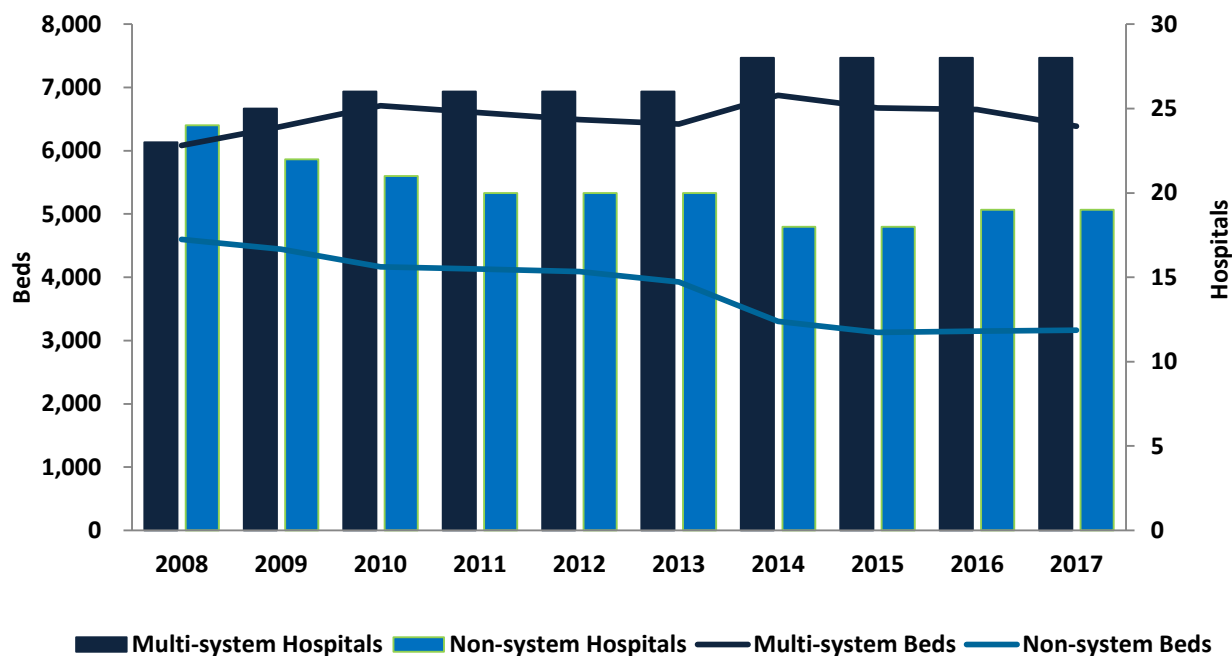


**Table 10. Trend in Licensed Acute Care Beds by System Affiliation:  
Maryland Hospitals, FY 2008 - 2017**

System Name	System Hospitals	2008	2009	2010	2011	2012	2013	2014	2015	2016	2017
Johns Hopkins Medical System (JHH)	The Johns Hopkins Hospital	982	979	990	994	992	1,000	1,060	1,082	1,129	1,131
	Johns Hopkins Bayview Medical Center	333	345	346	348	348	355	355	337	341	330
	Howard County General Hospital	219	209	227	238	249	249	253	259	266	264
	Suburban Hospital	-	-	239	222	233	229	236	220	236	222
	<b>System Total</b>	<b>1,534</b>	<b>1,533</b>	<b>1,802</b>	<b>1,802</b>	<b>1,822</b>	<b>1,833</b>	<b>1,904</b>	<b>1,898</b>	<b>1,972</b>	<b>1,947</b>
University of Maryland Medical System (UMMS)	University of Maryland Medical Center	689	705	731	757	779	800	816	801	772	750
	Univ. of MD Baltimore Washington Medical Center	293	298	311	321	308	307	319	310	303	293
	Univ. of MD Medical Center Midtown Campus	209	191	180	167	164	155	128	110	107	87
	Univ. of MD Rehabilitation & Orthopaedic Institute	10	11	10	10	9	9	10	10	7	4
	Univ. of MD St. Joseph Medical Center	-	-	-	-	-	-	232	238	247	232
	Univ. of MD Charles Regional Medical Center	-	-	-	120	124	110	121	115	110	89
	Univ. of MD Shore Medical Center at Easton	123	120	125	120	116	112	112	112	112	112
	Univ. of MD Shore Medical Center at Dorchester	49	54	54	53	52	46	41	39	47	46
	Univ. of MD Shore Medical Center at Chestertown	-	57	53	47	46	42	41	31	30	26
	Univ. of MD Upper Chesapeake Medical Center	-	-	-	-	-	-	-	183	180	170
Univ. of MD Harford Memorial Hospital	Univ. of MD Harford Memorial Hospital	-	-	-	-	-	-	-	84	84	85
	<b>System Total</b>	<b>1,373</b>	<b>1,436</b>	<b>1,464</b>	<b>1,595</b>	<b>1,598</b>	<b>1,581</b>	<b>1,820</b>	<b>2,033</b>	<b>1,999</b>	<b>1,894</b>
MedStar Health*	MedStar Franklin Square Hospital	362	380	371	376	347	355	347	354	364	353
	MedStar Good Samaritan Hospital	265	245	236	235	222	224	206	177	165	155
	MedStar Harbor Hospital	203	215	221	193	179	160	136	120	113	107
	MedStar Montgomery Medical Center	-	165	170	159	158	138	132	120	122	114
	MedStar Southern Maryland Hospital Center	-	-	-	-	-	-	227	207	208	192
	MedStar St. Mary's Hospital	-	-	-	96	90	90	89	82	91	103
	MedStar Union Memorial Hospital	283	292	295	271	231	236	221	205	211	209
	<b>System Total</b>	<b>1,113</b>	<b>1,297</b>	<b>1,293</b>	<b>1,330</b>	<b>1,227</b>	<b>1,203</b>	<b>1,358</b>	<b>1,265</b>	<b>1,274</b>	<b>1,233</b>
LifeBridge Health	Sinai Hospital of Baltimore	398	415	413	424	416	426	421	407	392	367
	Northwest Hospital Center	213	218	221	215	221	225	243	245	199	192
	<b>System Total</b>	<b>611</b>	<b>633</b>	<b>634</b>	<b>639</b>	<b>637</b>	<b>651</b>	<b>664</b>	<b>652</b>	<b>591</b>	<b>559</b>
Adventist HealthCare	Adventist HealthCare Washington Adventist Hospital	294	292	288	281	271	252	252	232	230	204
	Adventist HealthCare Shady Grove Medical Center	275	293	320	336	339	331	312	305	290	256
	<b>System Total</b>	<b>569</b>	<b>585</b>	<b>608</b>	<b>617</b>	<b>610</b>	<b>583</b>	<b>564</b>	<b>537</b>	<b>520</b>	<b>460</b>
Dimensions Healthcare System	Prince George's Hospital Center	264	246	254	244	242	224	214	215	237	233
	Laurel Regional Hospital	95	97	95	87	83	77	78	74	60	63
	<b>System Total</b>	<b>359</b>	<b>343</b>	<b>349</b>	<b>331</b>	<b>325</b>	<b>301</b>	<b>292</b>	<b>289</b>	<b>297</b>	<b>296</b>
Western Maryland Medical (Health) System	Braddock Hospital	155	154	154	-	-	-	-	-	-	-
	Memorial Hosp & Med Ctr. of Cumberland	109	117	108	-	-	-	-	-	-	-
	<b>System Total</b>	<b>264</b>	<b>271</b>	<b>262</b>	-	-	-	-	-	-	-
Upper Chesapeake Health System	Upper Chesapeake Medical Center	168	182	196	186	175	181	185	-	-	-
	Harford Memorial Hospital	91	104	105	101	97	89	89	-	-	-
	<b>System Total</b>	<b>259</b>	<b>286</b>	<b>301</b>	<b>287</b>	<b>272</b>	<b>270</b>	<b>274</b>	-	-	-
<b>Total: System Hospitals</b>		<b>6,082</b>	<b>6,384</b>	<b>6,713</b>	<b>6,601</b>	<b>6,491</b>	<b>6,422</b>	<b>6,876</b>	<b>6,674</b>	<b>6,653</b>	<b>6,389</b>
Non-System Hospitals	Year of System Affiliation/ System/ Current Name	2008	2009	2010	2011	2012	2013	2014	2015	2016	2017
Anne Arundel Medical Center		278	301	316	324	336	380	385	384	375	370
Atlantic General Hospital		51	53	55	53	53	48	45	48	48	45
Bon Secours Hospital		151	125	126	141	127	115	107	88	72	72
Calvert Memorial Hospital		105	106	98	98	95	95	92	85	77	76
Carroll Hospital Center		216	218	213	195	189	158	151	147	140	143
Chester River Hospital Center	2009/UMMS/Univ. of MD Shore Med. Ctr. at Chestertown	62	-	-	-	-	-	-	-	-	-
Civista Medical Center	2011/UMMS/Univ. of MD Charles Regional Med. Ctr.	121	129	120	-	-	-	-	-	-	-
Doctors Community Hospital		192	195	190	195	219	207	198	182	163	190
Edward W. McCready Memorial Hospital		8	9	8	8	9	5	4	4	4	3
Fort Washington Medical Center		42	43	43	42	41	31	33	31	34	32
Frederick Memorial Hospital		246	269	274	276	309	298	297	258	233	239
Garrett County Memorial Hospital		34	36	33	31	30	29	26	23	25	27
Greater Baltimore Medical Center		298	310	300	285	281	270	255	245	231	232
Holy Cross Germantown Hospital		-	-	-	-	-	-	-	-	93	93
Holy Cross Hospital		404	408	404	402	409	396	397	391	423	409
Mercy Medical Center		235	243	244	244	226	233	225	207	184	183
Merit Medical Center		264	258	260	258	252	245	237	231	223	227
Montgomery General Hospital	2009/MedStar/MedStar Montgomery General Hosp.	149	-	-	-	-	-	-	-	-	-
Peninsula Regional Medical Center		366	362	358	362	363	317	288	275	292	281
St. Agnes Hospital		314	307	318	314	296	287	276	264	251	263
St. Joseph Medical Center	2013/UMMS/Univ. of MD St. Joseph Medical Ctr.	364	354	345	300	263	247	-	-	-	-
St. Mary's Hospital	2010/MedStar/MedStar St. Mary's	108	108	103	-	-	-	-	-	-	-
Southern Maryland Hospital Center	2013/MedStar/MedStar Southern MD Hosp. Ctr.	258	255	246	235	238	239	-	-	-	-
Suburban Hospital	2010/JHH/No Change	228	238	-	-	-	-	-	-	-	-
Union Hospital of Cecil County		105	116	113	113	106	92	85	75	84	83
Western Maryland Regional Medical Ctr.		-	-	-	252	250	234	200	192	195	198
<b>Total: Non-System Hospitals</b>		<b>4,599</b>	<b>4,443</b>	<b>4,167</b>	<b>4,128</b>	<b>4,092</b>	<b>3,926</b>	<b>3,301</b>	<b>3,130</b>	<b>3,147</b>	<b>3,166</b>
<b>Maryland Total</b>		<b>10,681</b>	<b>10,827</b>	<b>10,880</b>	<b>10,729</b>	<b>10,583</b>	<b>10,348</b>	<b>10,177</b>	<b>9,804</b>	<b>9,800</b>	<b>9,555</b>

Source: Maryland Health Care Commission, ACHI FY2008 - FY2017. Systems are multi-hospital systems with more than one hospital in Maryland.

**Chart 8. Comparison of Multihospital Systems and Non-Multihospital System Hospitals, Maryland FY2008 - FY2017**



**Table 11. Multihospital Systems and Hospitals and Beds by System Status  
Maryland FY2010 - FY2017**

System Status	2010	2011	Annual Change	2012	Annual Change	2013	Annual Change	2014	Annual Change	2015	Annual Change	2016	Annual Change	2017	Annual Change	Change 2010-2017
Multihospital Systems	8	7		7		7		7		6		6		6		
Multihospital System Hospitals	26	26		26		26		28		28		28		28		7.7%
Beds	6,713	6,601	-1.7%	6,491	-1.7%	6,422	-1.1%	6,876	7.1%	6,674	-2.9%	6,653	-0.3%	6,389	-4.0%	-4.8%
Percent of Maryland Hospitals	55%	57%		57%		56.5%		63.0%		60.9%		59.6%		59.6%		
Percent of Beds	62%	62%		61%		62.1%		67.6%		68.1%		67.9%		66.9%		
Non-system Hospitals	21	20		20		20		18		18		19		19		-9.5%
Beds	4,167	4,128	-0.9%	4,092	-0.9%	3,926	-4.1%	3,301	-15.9%	3,130		3,147	0.5%	3,166	0.6%	-24.0%
Percent of Maryland Hospitals	45%	43%		43%		43.5%		39.1%		39.1%		40.4%		40.4%		
Percent of Beds	38%	38%		39%		37.9%		32.4%		31.9%		32.1%				
Total Acute General Hospital	47	46		46		46		46		46		47		47		0.0%
Total Beds	10,880	10,729	-1.4%	10,583	-1.4%	10,348	-2.2%	10,177	-1.7%	9,804	-3.7%	9,800	0.0%	9,555	-2.5%	-12.2%

Source: Maryland Health Care Commission

## **Total Available Acute Care Bed Capacity**

The Commission surveys general hospitals for the total number of acute care beds they could physically accommodate, if necessary. Available acute care bed capacity is defined as the total number of acute inpatient beds that are available for use, or that could be physically set up in space appropriate for licensed acute inpatient care, as admissions might warrant. It is a physical count of beds based on the available patient rooms with headwalls, measuring the maximum operating capacity under normal, non-emergency circumstances, rather than a measure of staffing capacity.

The survey shows that 40 general hospitals in Maryland with 6,185 licensed acute care beds report the availability of physical bed capacity that exceeds their licensed capacity. These 40 hospitals, in the aggregate, report a physical capacity of 8,496 beds. This excess physical bed capacity (2,311 beds) would potentially be available to accommodate short term growth in demand and, if necessary, major emergencies and disasters, so long as staffing resources could be secured. Central Maryland has the greatest excess, with reported physical bed capacity exceeding licensed bed capacity of 932 beds, followed by Southern Maryland with 497 more physical beds than licensed beds.

Six hospitals report that their physical capacity to set up acute care beds, as of June, 2016 is less than their licensed bed capacity. These hospitals have a combined total of 3,287 licensed acute care beds and report that, in the aggregate, they only have physical capacity to set up 3,056 acute care beds, a difference of 231 beds.

Statewide, the Commission's June 1, 2016 survey identifies a net of 2,080 beds of physical bed capacity in excess of licensed bed capacity. The results of this survey are shown in Table 12.<sup>1</sup>

---

<sup>1</sup>The data are self-reported and not verified by the Commission. To the extent possible, the Commission verifies hospital physical bed capacity on a case by case basis, when reviewing hospital expansion, renovation, and replacement projects submitted under the Certificate of Need Program.

**Table 12. Total Available Physical Acute Care Bed Capacity Reported by Maryland Hospitals, June 1, 2016**

<b>Hospital Name</b>	<b>Licensed Beds FY 2017</b>	<b>Total Available Physical Capacity</b>	<b>Difference</b>
Adventist HealthCare Shady Grove Medical Center	256	326	70
Adventist HealthCare Washington Adventist Hospital	204	304	100
Anne Arundel Medical Center	370	366	(4)
Atlantic General Hospital	45	62	17
Bon Secours Hospital	72	152	80
Calvert Memorial Hospital	76	126	50
Carroll Hospital Center	143	197	54
Doctors Community Hospital, Inc.	190	218	28
Edward W. McCready Memorial Hospital	3	26	23
Fort Washington Medical Center	32	37	5
Frederick Memorial Hospital	239	315	76
Garrett County Memorial Hospital	27	45	18
Greater Baltimore Medical Center, Inc.	232	342	110
Holy Cross Germantown Hospital*	93	93	0
Holy Cross Hospital	409	369	(40)
Howard County General Hospital	264	244	(20)
Johns Hopkins Bayview Medical Center	330	348	18
Laurel Regional Hospital	63	171	108
MedStar Franklin Square Hospital Center	353	342	(11)
MedStar Good Samaritan Hospital	155	308	153
MedStar Harbor Hospital	107	213	106
MedStar Montgomery Medical Center	114	187	73
MedStar Southern Maryland Hospital Center	192	339	147
MedStar St. Mary's Hospital	103	129	26
MedStar Union Memorial Hospital	209	305	96
Mercy Medical Center, Inc.	183	238	55
Meritus Medical Center	227	258	31
Northwest Hospital Center	192	224	32
Peninsula Regional Medical Center	281	380	99
Prince George's Hospital Center	233	311	78
Sinai Hospital of Baltimore	367	388	21
St. Agnes Hospital	263	367	104
Suburban Hospital	222	247	25
The Johns Hopkins Hospital	1,131	983	(148)
Union Hospital of Cecil County	83	104	21
University of Maryland Baltimore Washington Medical Center	293	350	57
University of Maryland Charles Regional Medical Center	89	144	55
University of Maryland Harford Memorial Hospital, Inc.	85	128	43
University of Maryland Medical Center	750	742	(8)
University of Maryland Medical Center Midtown Campus	87	159	72
University of Maryland Rehabilitation & Orthopaedic Institute	4	28	24
University of Maryland Shore Medical Center at Chestertown	26	40	14
University of Maryland Shore Medical Center at Dorchester	46	80	34
University of Maryland Shore Medical Center at Easton	112	150	38
University of Maryland St. Joseph Medical Center	232	305	73
University of Maryland Upper Chesapeake Medical Center	170	195	25
Western Maryland Regional Medical Center	198	250	52
<b>MARYLAND TOTAL</b>	<b>9,555</b>	<b>11,635</b>	<b>2,080</b>

Source: Maryland Health Care Commission, ACHI, Physical Bed Capacity, June 1, 2016

Note: Total available physical capacity is defined as the total number of acute inpatient beds that are available for use, including those that could be physically set up in space appropriate for licensed acute inpatient care as admissions might warrant. This should be a count of potentially available physical bed capacity rather than a measure of staffing capacity or a reflection of current use of patient care rooms. This is determined by the number of headwalls and/or gas lines that could be made available for inpatient use, without renovations. Rooms with two headwalls/gas lines should be counted as having capacity for two beds, and rooms with one headwall/gas line should be counted as having capacity for one bed, regardless of their current use. It does not include space currently used for non-acute or special hospital beds.

## **Observation Services**

Observation services are those services furnished by the hospital on the hospital's premises, including use of a bed and periodic monitoring by the hospital's nursing or other staff, which are reasonable and necessary to determine the need for a possible admission to the hospital as an inpatient. Such services must be ordered and documented in writing as to time and method (FAX, telephone, etc.) by a medical staff practitioner. Observation services may or may not be provided in a distinct area of the hospital. Observation services include, but are not limited to; monitoring of vital life signs; collecting laboratory samples for diagnostic testing, use of specialized equipment assisting physicians during patient examination and treatment; changing of dressings and cleaning of wounds and incisions; observing and recording the emotional stability of patients; observing patients for reaction to drugs; administering specified medication; and infusing fluids intravenously.

Observation services are identified as a cost center by the Maryland Health Services Cost Review Commission and the standard unit of measure is hours. Extended recovery time for scheduled ambulatory surgery, emergency and/or labor and delivery observation are separate cost centers and are not included in observation services.

Beginning in 2012, hospitals were asked to report whether they use licensed beds, distinct unit (non-licensed) observation beds, or a combination of both licensed and distinct unit observation beds to provide services to observation patients. If distinct unit observation beds were used, the hospitals reported how many distinct unit observation beds were available. The hospitals were also asked if there were plans to expand the number of distinct unit observation beds and, if so, how many beds would be added. Finally, the hospitals were requested to report how many licensed beds were occupied by observation patients on an average day in the past twelve months.

As of June 1, 2016, twenty-two (22) hospitals report the existence of distinct unit observation beds. However, only four (4) hospitals use distinct unit observation beds exclusively. Twenty-four (24) hospitals use licensed beds only and eighteen (18) hospitals use a combination of distinct unit observation beds and licensed beds.<sup>2</sup> The total number of distinct unit observation beds available for all Maryland hospitals is 369, an increase of 9 distinct observation beds since June 1, 2015. Two (2) hospitals reported that they plan to expand the number of distinct unit observation beds within the next twelve months. The total additional distinct unit observation beds anticipated is 28. Table 13 below shows the responses as reported by each hospital and Table 14 provides a summary of all Maryland general hospital observation services

**Table 13. Maryland Acute Care General Hospital Observation (OBV) Services, June 1, 2016**

Hospital Name	Distinct Unit Observation Beds Only	Licensed Beds Only	Combination of Distinct Unit Observation and Licensed Beds	Number of Distinct Unit Observation Beds Available	Average Daily Census/ Observation Patients	Planned Expansion of Distinct Unit Observation Beds	Number of Beds Planned for Expansion
Frederick Memorial Hospital		√			14.0		
Garrett County Hospital		√			9.0		
Meritus Medical Center			√	25	22.0		
Western Maryland Regional Medical Center	√			20	12.0		
<b>Western Maryland Total</b>	<b>1</b>	<b>2</b>	<b>1</b>	<b>45</b>	<b>-</b>	<b>-</b>	<b>-</b>
Adventist HealthCare Shady Grove Medical Center	√			18	13.6		
Adventist HealthCare Washington Adventist Hospital		√			9.0		
Holy Cross Germantown Hospital			√	8	2.7		
Holy Cross Hospital			√	19	13.7		
MedStar Montgomery Medical Center			√	12	7.0		
Suburban Hospital			√	20	17.0		
<b>Montgomery County Total</b>	<b>1</b>	<b>1</b>	<b>4</b>	<b>77</b>	<b>-</b>	<b>-</b>	<b>-</b>
Calvert Memorial Hospital		√			9.3		
Doctors Community Hospital			√	15	13.0		
Fort Washington Medical Center		√			4.0		
Laurel Regional Hospital		√			5.0		
MedStar Southern Maryland Hospital Center		√			27.0		
MedStar St. Mary's Hospital		√			9.0		
Prince George's Hospital Center			√	16	13.5		
University of Maryland Charles Regional Medical Center		√			8.7	yes	20
<b>Southern Maryland Total</b>	<b>0</b>	<b>6</b>	<b>2</b>	<b>31</b>	<b>-</b>	<b>1</b>	<b>20</b>
Anne Arundel Medical Center			√	17	33.0		
Bon Secours Hospital		√			4.5		
Carroll Hospital Center	√			22	11.0		
Greater Baltimore Medical Center		√			14.8		
Howard County General Hospital			√	13	12.9		
Johns Hopkins Bayview Medical Center			√	17	33.0		
MedStar Franklin Square Hospital			√	24	51.0		
MedStar Good Samaritan Hospital		√			12.0		
MedStar Harbor Hospital			√	11	9.0		
MedStar Union Memorial Hospital		√			11.0		
Mercy Medical Center		√			12.8		
Northwest Hospital Center			√	20	15.0		
Sinai Hospital of Baltimore			√	17	17.0		
St. Agnes Hospital		√			22.0		
The Johns Hopkins Hospital		√			10.0		
University of Maryland Baltimore Washington Medical Center			√	24	19.7		
University of Maryland Harford Memorial Hospital		√			12.0		
University of Maryland Medical Center			√	21	15.0		
University of Maryland Medical Center Midtown Campus		√			6.3		
University of Maryland Rehabilitation & Orthopaedic Institute	-	-	-	-	-	-	-
University of Maryland St. Joseph Medical Center			√	12	15.0	yes	8
University of Maryland Upper Chesapeake Medical Center			√	10	32.0		
<b>Central Maryland Total</b>	<b>1</b>	<b>9</b>	<b>11</b>	<b>208</b>	<b>-</b>	<b>1</b>	<b>8</b>
Atlantic General Hospital		√			3.3		
Edward W. McCready Memorial Hospital		√			0.9		
Peninsula Regional Medical Center		√			15.0		
Union Hospital of Cecil County	√			8	7.0		
University of Maryland Shore Medical Center at Chestertown		√			1.3		
University of Maryland Shore Medical Center at Dorchester		√			1.0		
University of Maryland Shore Medical Center at Easton		√			2.0		
<b>Eastern Shore Total</b>	<b>1</b>	<b>6</b>	<b>0</b>	<b>8</b>	<b>-</b>	<b>-</b>	<b>-</b>
<b>MARYLAND STATE TOTAL</b>	<b>4</b>	<b>24</b>	<b>18</b>	<b>369</b>	<b>-</b>	<b>2</b>	<b>28</b>

Source: MHCC, ACHI, Supplemental Survey Observation Services, June 1, 2016. \*University of Maryland Rehabilitation & Orthopaedic Institute does not provide emergency services and does not have observation services.

**Table 14. Summary - Acute Care Hospital Observation Beds, June 1, 2016**

<b>Observation Services</b>	<b>Total Hospitals</b>	<b>Total Distinct Unit Observation Beds</b>
Distinct Unit Observation Beds Only	4	68
Licensed Beds Only	24	–
Combined Distinct Unit/Licensed Observation Beds	18	301
Total Number of Distinct Unit Observation Beds, All Hospitals	21	369
Hospitals with Planned Expansion	2	
Number of Proposed Distinct Unit Observation Beds*	28	

Source: Maryland Health Care Commission, Survey Observation Beds, June 1, 2016

### **Emergency Department /Freestanding Medical Facility Treatment Capacity**

Maryland has 46 emergency departments (EDs) located in acute general hospitals and three freestanding emergency treatment facilities operated by acute general hospitals licensed as “freestanding medical facilities.” The freestanding medical facilities are: (1) Bowie Health Center located in Bowie, (Prince George’s County) and operated by Prince George’s Hospital Center, with 27 treatment spaces allocated to emergency care; (2) Adventist HealthCare Germantown Emergency Center with 21 treatment spaces, and operated by Adventist HealthCare Shady Grove Medical Center, and (3) Queens Anne’s Emergency Center, operated by University of Maryland Shore Medical Center at Easton with 14 treatment spaces. This facility is located near Grasonville in Queen Anne’s County

Table 15 shows the change in ED and FMF treatment capacity from a regional perspective. Seven (7) emergency departments report an increase in treatment capacity in the past year. None of the EDs reported a decline in the number of treatment spaces from 2015 to 2016. Forty-one (41) hospital emergency departments and two (2) of the three freestanding medical facilities with emergency department capacity had no change in treatment spaces. Overall, Maryland emergency departments/facilities reported an increase of 79 treatment spaces.

3 University of Maryland Rehabilitation and Orthopaedic Institute in Baltimore City is the only acute care hospital in Maryland that does not operate an emergency department.

**Table 15. Change in Emergency Department/ Freestanding Medical Facility Treatment Capacity:  
Maryland, 2015 - 2016**

REGION	Total Number of Emergency Departments and FMFs	Net Change in Emergency Treatment Spaces	Percent Change in Capacity in Emergency Treatment Spaces	Emergency Departments or FMFs with an Increase in Capacity	Emergency Departments or FMFs with a Decrease in Capacity	Emergency Departments or FMFs with No Change in Capacity
Western Maryland	4	11	6.63%	1	0	3
Montgomery County*	7	3	1.12%	1	0	6
Southern Maryland*	9	12	3.90%	1	0	8
Central Maryland**	21	53	3.28%	4	0	17
Eastern Shore*	8	0	0.00%	0	0	8
State Total	49	79	3.04%	7	0	42

Source: Maryland Health Care Commission. \*Montgomery County includes Shady Grove Emergency Center at Germantown, Southern Maryland includes emergency treatment capacity at the Bowie Health Center. and the Eastern Shore includes the Queen Anne's Emergency Center.

\*\*Johns Hopkins Hospital operates 2 distinct emergency centers, the main emergency department and a pediatric emergency department, the emergency departments are combined and reported as one in Table 15.

Notes: James Lawrence Kernan Hospital does not provide emergency services.

Table 16 summarizes the Commission's supplemental survey of general hospital emergency department treatment capacity by hospital or freestanding medical facility and jurisdiction and region, identifying how Maryland's hospitals classify their ED or freestanding medical facility treatment spaces.



**Table 16. Inventory of Emergency Department/ Freestanding Medical Facility Treatment Capacity:  
Maryland: June 1, 2016**

Jurisdiction/Region	Hospital Name	Treatment Spaces			Non-Treatment Spaces*
		Total Treatment Spaces	Monitored Spaces	Non-Monitored Spaces	
Allegany County	Western Maryland Regional Medical Center	53	32	21	4
Frederick County	Frederick Memorial Hospital	56	20	36	1
Garrett County	Garrett County Hospital	13	12	1	2
Washington County	Meritus Medical Center	55	51	4	1
<b>WESTERN MARYLAND TOTAL</b>		<b>177</b>	<b>115</b>	<b>62</b>	<b>8</b>
Montgomery County	Adventist HealthCare Germantown Emergency Center	21	9	12	2
	Adventist HealthCare Shady Grove Medical Center	64	31	33	0
	Adventist HealthCare Washington Adventist Hospital	26	15	11	0
	Holy Cross Germantown Hospital	14	11	3	2
	Holy Cross Hospital	64	34	30	8
	MedStar Montgomery General Hospital	41	32	9	3
	Suburban Hospital	41	29	12	3
<b>MONTGOMERY COUNTY TOTAL</b>		<b>271</b>	<b>161</b>	<b>110</b>	<b>18</b>
Calvert County	Calvert Memorial Hospital	34	22	12	3
Charles County	University of Maryland Charles Regional Medical Center	38	21	17	3
Prince George's County	Bowie Health Center*	27	22	5	0
	Doctors Community Hospital	55	36	19	3
	Fort Washington Medical Center	18	7	11	2
	Laurel Regional Hospital	31	31	0	0
	Prince George's Hospital Center	46	21	25	1
	MedStar Southern Maryland Hospital Center	39	29	10	4
St. Mary's County	MedStar St. Mary's Hospital	32	20	12	6
<b>SOUTHERN MARYLAND TOTAL</b>		<b>320</b>	<b>209</b>	<b>111</b>	<b>22</b>
Anne Arundel County	Anne Arundel Medical Center	67	61	6	12
Baltimore City	University of Maryland Baltimore Washington Medical Ctr.	68	59	9	1
	Bon Secours Hospital	28	21	7	1
	Johns Hopkins Bayview Medical Center	45	29	16	18
	MedStar Good Samaritan Hospital	42	22	20	4
	MedStar Harbor Hospital	29	21	8	1
	MedStar Union Memorial Hospital	55	24	31	1
	Mercy Medical Center	57	47	10	3
	Sinai Hospital of Baltimore	79	69	10	3
	St. Agnes Hospital	69	53	16	0
	The Johns Hopkins Hospital - Main ED	73	73	0	0
	The Johns Hopkins Hospital - Pediatric ED	35	35	0	2
	University of Maryland Medical Center	109	81	28	3
	University of Maryland Medical Center Midtown Campus	29	19	10	2
Baltimore County	Greater Baltimore Medical Center	45	31	14	5
	MedStar Franklin Square Hospital	96	75	21	1
	Northwest Hospital Center	61	39	22	4
	University of Maryland St. Joseph Medical Center	38	37	1	5
Carroll County	Carroll Hospital Center	43	29	14	6
Harford County	University of Maryland Harford Memorial Hospital	27	23	4	0
	University of Maryland Upper Chesapeake Medical Center	54	37	17	3
Howard County	Howard County General Hospital	74	49	25	4
<b>CENTRAL MARYLAND TOTAL</b>		<b>1,223</b>	<b>934</b>	<b>289</b>	<b>79</b>
Cecil County	Union Hospital of Cecil County	32	18	14	3
Dorchester County	University of Maryland Shore Medical Center at Dorchester	18	18	0	0
Kent County	University of Maryland Shore Medical Center at Chestertown	17	14	3	0
Queen Anne's County	Queen Anne's Emergency Center	14	14	0	1
Somerset County	Edward W. McCready Memorial Hospital	8	6	2	0
Talbot County	University of Maryland Shore Medical Center at Easton	34	32	2	2
Wicomico County	Peninsula Regional Medical Center	51	34	17	0
Worcester County	Atlantic General Hospital	30	7	23	5
<b>EASTERN SHORE TOTAL</b>		<b>204</b>	<b>143</b>	<b>61</b>	<b>11</b>
<b>MARYLAND STATE TOTAL</b>		<b>2,195</b>	<b>1,562</b>	<b>633</b>	<b>138</b>

Source: Maryland Health Care Commission, Supplemental Survey - Emergency Departments/Freestanding Medical Facilities, 2016

\*Non-treatment spaces in Emergency Departments include decontamination, observation/holding, and triage spaces in which treatment is not provided.

\*\*Renovations at Bowie Health Center increased treatment capacity from 15 treatment spaces to 27 treatment spaces.

Table 17 shows the trend in emergency department/freestanding medical facility treatment capacity

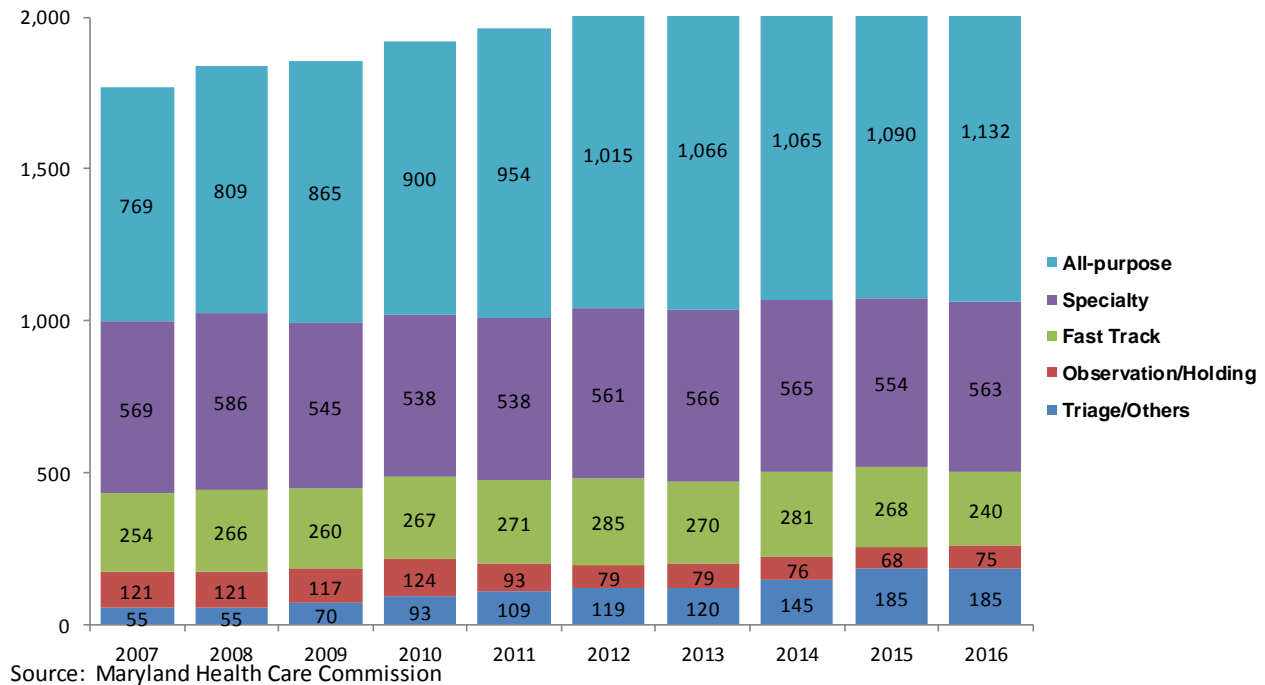
in Maryland from 2009 to 2016 by region, jurisdiction and hospital/facility. Chart 9 shows the change in the types of treatment spaces in Maryland.

**Table 17. Trends in Emergency Department/ Freestanding Medical Facilities Treatment Capacity:  
Maryland, June 1, 2009 - June 1, 2016**

Jurisdiction/Region	Hospital Name	Total Treatment Spaces							
		2009	2010	2011	2012	2013	2014	2015	2016
Allegany County	Braddock Hospital	16	-	-	-	-	-	-	-
	Memorial Hospital of Cumberland	20	-	-	-	-	-	-	-
	Western Maryland Regional Medical Center	-	51	53	53	53	53	53	53
	Frederick County	64	64	64	64	64	55	45	56
	Garrett County	13	13	13	13	13	13	13	13
	Washington County	48	48	55	55	55	55	55	55
<b>WESTERN MARYLAND TOTAL</b>		<b>161</b>	<b>176</b>	<b>185</b>	<b>185</b>	<b>185</b>	<b>176</b>	<b>166</b>	<b>177</b>
Montgomery County	Adventist HealthCare Germantown Emergency Center	21	21	21	21	21	21	21	21
	Adventist HealthCare Shady Grove Medical Center	61	63	64	64	64	64	64	64
	Adventist HealthCare Washington Adventist Hospital	28	28	26	26	26	26	26	26
	Holy Cross Germantown Hospital	-	-	-	-	-	-	14	14
	Holy Cross Hospital	60	59	59	59	61	61	61	64
	MedStar Montgomery General Hospital	32	41	41	41	41	41	41	41
	Suburban Hospital	43	43	43	43	43	42	41	41
<b>MONTGOMERY COUNTY TOTAL</b>		<b>224</b>	<b>234</b>	<b>233</b>	<b>233</b>	<b>235</b>	<b>255</b>	<b>268</b>	<b>271</b>
Calvert County	Calvert Memorial Hospital	34	34	34	34	34	34	34	34
	University of Maryland Charles Regional Medical Center	30	30	30	30	38	38	38	38
	Prince George's County	21	21	21	21	21	15	15	27
	Doctors Community Hospital	32	55	55	55	55	55	55	55
	Fort Washington Medical Center	18	18	18	18	18	18	18	18
	Laurel Regional Hospital	30	30	30	30	31	31	31	31
	Prince George's Hospital Center	44	44	44	44	47	47	46	46
	MedStar Southern Maryland Hospital Center	28	29	34	42	42	41	39	39
	MedStar St. Mary's Hospital	30	32	32	32	32	32	32	32
	<b>SOUTHERN MARYLAND TOTAL</b>	<b>267</b>	<b>293</b>	<b>298</b>	<b>306</b>	<b>318</b>	<b>311</b>	<b>308</b>	<b>320</b>
Anne Arundel County	Anne Arundel Medical Center	44	44	49	67	67	67	67	67
	University of MD Baltimore Washington Medical Center	66	66	66	66	66	66	68	68
Baltimore City	Bon Secours Hospital	32	29	32	32	28	28	28	28
	Johns Hopkins Bayview Medical Center	39	40	40	40	40	40	45	45
	MedStar Good Samaritan Hospital of Maryland	34	45	43	43	43	43	42	42
	MedStar Harbor Hospital	35	35	35	35	35	35	35	29
	MedStar Union Memorial Hospital	49	49	49	49	49	55	55	55
	Mercy Medical Center	45	45	45	45	57	57	57	57
	Sinai Hospital of Baltimore	61	61	61	61	61	61	67	79
	St. Agnes Hospital	53	53	53	59	64	64	65	69
	The Johns Hopkins Hospital - Main ED	51	51	51	73	73	73	73	73
	The Johns Hopkins Hospital - Pediatric ED	25	25	25	35	35	35	35	35
Baltimore County	University of Maryland Medical Center	58	62	62	79	85	123	123	109
	University of Maryland Medical Center Midtown Campus	25	25	25	29	28	30	29	29
	Greater Baltimore Medical Center	45	45	45	45	45	45	45	45
	MedStar Franklin Square Hospital	98	98	96	96	96	96	96	96
	Northwest Hospital Center	42	43	42	44	49	54	43	61
	University of Maryland St. Joseph Medical Center	44	39	39	39	39	38	38	38
Carroll County	Carroll Hospital Center	39	39	45	43	43	43	43	43
Harford County	University of Maryland Harford Memorial Hospital	31	31	31	29	29	29	27	27
Howard County	University of MD Upper Chesapeake Medical Center	52	52	52	52	57	55	54	54
	Howard County General Hospital	55	55	55	55	55	55	55	74
<b>CENTRAL MARYLAND TOTAL</b>		<b>1,023</b>	<b>1,032</b>	<b>1,041</b>	<b>1,116</b>	<b>1,144</b>	<b>1,192</b>	<b>1,190</b>	<b>1,223</b>
Cecil County	Union Hospital of Cecil County	27	32	32	32	32	32	32	32
Dorchester County	University of Maryland Medical Center at Dorchester	11	11	18	18	18	18	18	18
Kent County	University of Maryland Medical Center at Chestertown	11	11	11	11	11	11	17	17
Queen Anne's County	Queen Anne's Emergency Center	-	-	14	14	14	14	14	14
Somerset County	Edward W. McCready Memorial Hospital	8	8	8	8	8	8	8	8
Talbot County	University of Maryland Shore Medical Center at Easton	34	34	34	34	34	34	34	34
Wicomico County	Peninsula Regional Medical Center	51	51	51	51	51	51	51	51
Worcester County	Atlantic General Hospital	19	19	19	30	30	30	30	30
<b>EASTERN SHORE TOTAL</b>		<b>161</b>	<b>166</b>	<b>187</b>	<b>198</b>	<b>198</b>	<b>198</b>	<b>204</b>	<b>204</b>
<b>STATE TOTAL</b>		<b>1,836</b>	<b>1,901</b>	<b>1,944</b>	<b>2,038</b>	<b>2,080</b>	<b>2,132</b>	<b>2,136</b>	<b>2,195</b>

Source: Maryland Health Care Commission, Supplemental Survey - Emergency Departments/Freestanding Medical Facilities, 2016

**Chart 9. Change in Number of Emergency Treatment Spaces by Type of Space:  
Maryland, 2007 - 2016**



## **Hospital Surgical Services Capacity**

Table 18 displays the inventory of sterile operating rooms, by room type, excluding dedicated cesarean section rooms, reported by Maryland general hospitals. Table 19 profiles the inventory of dedicated cesarean section operating rooms and procedure rooms. Procedure rooms are rooms used for endoscopy, cystoscopy, or other minor procedures and many are not sterile rooms, and thus, are only appropriately used for “closed” procedures that do not involve surgical incisions.

**Table 18. Surgical Services Capacity By Hospital and Room Use:**

**Maryland Hospitals, June 1, 2016**

<b>Hospital</b>	<b>Inpatient General Purpose</b>	<b>Outpatient General Purpose</b>	<b>Mixed Use General Purpose</b>	<b>Inpatient Special Purpose</b>	<b>Outpatient Special Purpose</b>	<b>Mixed Use Special Purpose</b>	<b>Other Operating Rooms</b>	<b>Total Operating Rooms</b>
Adventist HealthCare Shady Grove Medical Center	0	0	16	0	0	0	0	16
Adventist HealthCare Washington Adventist Hospital	0	0	8	0	0	3	0	11
Anne Arundel Medical Center	0	0	26	0	0	0	0	26
Atlantic General Hospital	0	0	4	0	0	0	0	4
Bon Secours Hospital	0	0	5	0	0	0	0	5
Calvert Memorial Hospital	0	0	6	0	0	0	0	6
Carroll Hospital Center	0	0	10	0	0	0	0	10
Doctors Community Hospital	0	3	9	0	0	0	0	12
Edward W. McCready Memorial Hospital	0	0	2	0	0	0	0	2
Fort Washington Medical Center	0	0	3	0	0	0	0	3
Frederick Memorial Hospital	0	0	11	0	0	0	0	11
Garrett County Memorial Hospital	0	0	3	0	0	0	0	3
Greater Baltimore Medical Center	0	0	30	0	0	0	0	30
Holy Cross Germantown Hospital	0	0	5	0	0	0	0	5
Holy Cross Hospital	0	0	14	0	0	0	0	14
Howard County General Hospital	0	0	13	0	0	0	0	13
Johns Hopkins Bayview Medical Center	0	0	14	0	0	0	0	14
Laurel Regional Hospital	0	0	6	0	0	0	1	7
MedStar Franklin Square Hospital	0	0	14	0	0	2	0	16
MedStar Good Samaritan Hospital of Maryland	0	0	10	0	0	1	0	11
MedStar Harbor Hospital	0	0	9	0	0	0	0	9
MedStar Montgomery General Hospital	0	0	5	1	0	0	0	6
MedStar Southern Maryland Hospital Center	0	0	10	0	0	0	0	10
MedStar St. Mary's Hospital	0	0	6	0	0	0	0	6
MedStar Union Memorial Hospital	0	0	21	0	0	0	0	21
Mercy Medical Center	0	0	23	0	0	0	3	26
Meritus Medical Center	0	0	11	0	0	0	0	11
Northwest Hospital Center	0	0	9	0	0	0	0	9
Peninsula Regional Medical Center	0	0	10	0	0	3	0	13
Prince George's Hospital Center	1	0	8	0	0	0	1	10
Sinai Hospital of Baltimore	1	4	12	2	0	6	0	25
St. Agnes Hospital	0	0	19	0	0	0	0	19
Suburban Hospital	0	0	12	2	1	0	0	15
The Johns Hopkins Hospital	0	8	46	0	7	0	0	61
Union Hospital of Cecil County	0	0	4	0	0	0	0	4
University of Maryland Baltimore Washington Medical Center	0	0	16	0	0	0	0	16
University of Maryland Charles Regional Medical Center	0	0	4	0	0	0	0	4
University of Maryland Harford Memorial Hospital	0	0	4	0	0	0	0	4
University of Maryland Medical Center	0	0	22	0	0	13	0	35
University of Maryland Medical Center Midtown Campus	0	0	10	0	0	0	0	10
University of Maryland Rehabilitation & Orthopaedic Institute	0	0	6	0	0	0	0	6
University of Maryland Shore Medical Center at Chestertown	0	0	3	0	0	0	0	3
University of Maryland Shore Medical Center at Dorchester	0	0	4	0	0	0	0	4
University of Maryland Shore Medical Center at Easton	0	0	6	0	0	0	0	6
University of Maryland St. Joseph Medical Center	0	0	15	0	0	4	0	19
University of Maryland Upper Chesapeake Medical Center	0	0	11	0	0	0	0	11
Western Maryland Regional Medical Center	0	0	14	0	0	0	0	14
<b>TOTAL</b>	<b>2</b>	<b>15</b>	<b>529</b>	<b>5</b>	<b>8</b>	<b>32</b>	<b>5</b>	<b>596</b>

Source: Maryland Health Care Commission, ACHI, Supplemental Survey, Surgical Services Capacity, June 1, 2016

**Table 19. Dedicated Cesarean Section Operating Rooms and Procedure Rooms by Hospital:  
Maryland Hospitals, June 1, 2016**

Jurisdiction/Region	Hospital	Dedicated Cesarean Section OR's		Procedure Rooms*	
		Inside Sterile Area	Outside Sterile Area	Inside Sterile Area	Outside Sterile Area
Allegany County	Western Maryland Regional Medical Center	2	0	0	8
Frederick County	Frederick Memorial Hospital	2	0	1	3
Garrett County	Garrett County Memorial Hospital	0	0	0	1
Washington County	Meritus Medical Center	2	0	1	2
<b>WESTERN MARYLAND TOTAL</b>		<b>6</b>	<b>0</b>	<b>2</b>	<b>14</b>
Montgomery County	Adventist HealthCare Shady Grove Medical Center	0	3	3	0
	Adventist HealthCare Washington Adventist Hospital	2	0	2	0
	Holy Cross Germantown Hospital	2	0	1	3
	Holy Cross Hospital	4	0	2	9
	MedStar Montgomery General Hospital	2	0	1	2
	Suburban Hospital	0	0	0	3
<b>MONTGOMERY COUNTY TOTAL</b>		<b>10</b>	<b>3</b>	<b>9</b>	<b>17</b>
Calvert County	Calvert Memorial Hospital	1	0	1	7
Charles County	University of Maryland Charles Regional Medical Center	0	1	1	1
Prince George's County	Doctors Community Hospital	0	0	1	3
	Fort Washington Medical Center	0	0	1	1
	Laurel Regional Hospital	0	0	0	2
	MedStar Southern Maryland Hospital Center	2	0	1	2
	Prince George's Hospital Center	2	0	1	3
	<i>Total: Prince George's County</i>	<i>4</i>	<i>0</i>	<i>4</i>	<i>11</i>
St. Mary's County	MedStar St. Mary's Hospital	1	0	0	2
<b>SOUTHERN MARYLAND TOTAL</b>		<b>6</b>	<b>1</b>	<b>6</b>	<b>21</b>
Anne Arundel County	Anne Arundel Medical Center	3	0	0	4
	University of MD Baltimore Washington Medical Center	2	0	2	5
	<i>Total: Anne Arundel County</i>	<i>5</i>	<i>0</i>	<i>2</i>	<i>9</i>
Baltimore City	Bon Secours Hospital	0	0	1	2
	Johns Hopkins Bayview Medical Center	2	0	0	6
	MedStar Good Samaritan Hospital of Maryland	0	0	0	5
	MedStar Harbor Hospital	2	0	4	0
	MedStar Union Memorial Hospital	0	0	4	0
	Mercy Medical Center	2	0	9	0
	Sinai Hospital of Baltimore	2	0	5	1
	St. Agnes Hospital	2	0	0	1
	The Johns Hopkins Hospital	3	0	0	23
	University of Maryland Medical Center	3	0	4	8
	University of Maryland Medical Center Midtown Campus	0	0	0	8
	Univ. of MD Rehabilitation & Orthopaedic Institute	0	0	0	1
	<i>Total: Baltimore City</i>	<i>16</i>	<i>0</i>	<i>27</i>	<i>55</i>
Baltimore County	Greater Baltimore Medical Center	3	0	3	10
	MedStar Franklin Square Hospital	3	0	5	0
	Northwest Hospital Center	0	0	0	2
	University of MD St. Joseph Medical Center	2	0	1	5
	<i>Total: Baltimore County</i>	<i>8</i>	<i>0</i>	<i>9</i>	<i>17</i>
Carroll County	Carroll Hospital Center	2	0	0	3
Harford County	University of Maryland Harford Memorial Hospital	0	0	2	0
	University of Maryland Upper Chesapeake Medical Ctr.	2	0	1	0
	<i>Total: Harford County</i>	<i>2</i>	<i>0</i>	<i>3</i>	<i>0</i>
Howard County	Howard County General Hospital	2	0	1	3
<b>CENTRAL MARYLAND TOTAL</b>		<b>35</b>	<b>0</b>	<b>42</b>	<b>87</b>
Cecil County	Union Hospital of Cecil County	1	0	5	2
Dorchester County	University of MD Shore Medical Center at Dorchester	0	0	0	2
Kent County	University of MD Shore Medical Center at Chestertown	0	0	1	0
Somerset County	Edward W. McCready Memorial Hospital	0	0	0	0
Talbot County	University of MD Shore Medical Center at Easton	1	0	0	1
Wicomico County	Peninsula Regional Medical Center	2	0	2	1
Worcester County	Atlantic General Hospital	0	0	1	3
<b>EASTERN SHORE TOTAL</b>		<b>4</b>	<b>0</b>	<b>9</b>	<b>9</b>
<b>MARYLAND TOTAL</b>		<b>61</b>	<b>4</b>	<b>68</b>	<b>148</b>

Source: Maryland Health Care Commission, ACHI, Supplemental Survey, Surgical Services Capacity, June 1, 2016

\*Procedure Rooms include dedicated cystoscopy and endoscopy rooms and other procedure rooms

Table 20 shows the trend in surgical services capacity at Maryland hospitals for the three-year period June 1, 2014 through June 1, 2016.

**Table 20. Trends in Number of Surgical Rooms:  
Maryland Hospitals, 2014 - 2016**

Jurisdiction/Region	Hospital	2014			2015			2016		
		Total Operating Rooms	Total Procedure Rooms	Total Cesarean Section OR's	Total Operating Rooms	Total Procedure Rooms	Total Cesarean Section OR's	Total Operating Rooms	Total Procedure Rooms	Total Cesarean Section OR's
Allegany County	Western Maryland Regional Medical Center	14	8	2	14	8	2	14	8	2
Frederick County	Frederick Memorial Hospital	11	4	2	11	4	2	11	4	2
Garrett County	Garrett County Memorial Hospital	3	1	0	3	1	0	3	1	0
Washington County	Meritus Medical Center	11	3	2	11	3	2	11	3	2
<b>WESTERN MARYLAND TOTAL</b>		<b>39</b>	<b>16</b>	<b>6</b>	<b>39</b>	<b>16</b>	<b>6</b>	<b>39</b>	<b>16</b>	<b>6</b>
Montgomery County	Adventist HealthCare Shady Grove Medical Center	16	3	3	16	3	3	16	3	3
	Adventist HealthCare Washington Adventist Hospital	11	2	2	11	2	2	11	2	2
	Holy Cross Germantown Hospital	-	-	-	5	4	2	5	4	2
	Holy Cross Hospital	14	11	4	14	11	4	14	11	4
	MedStar Montgomery General Hospital	6	3	2	6	3	2	6	3	2
	Suburban Hospital	15	3	0	15	3	0	15	3	0
<b>MONTGOMERY COUNTY TOTAL</b>		<b>35</b>	<b>17</b>	<b>6</b>	<b>67</b>	<b>26</b>	<b>13</b>	<b>67</b>	<b>26</b>	<b>13</b>
Calvert County	Calvert Memorial Hospital	6	8	1	6	8	1	6	8	1
Charles County	Univ. of MD Charles Regional Medical Center	4	3	1	4	3	1	4	2	1
Prince George's County	Doctors Community Hospital	10	5	0	12	4	0	12	4	0
	Fort Washington Medical Center	3	2	0	3	2	0	3	2	0
	Laurel Regional Hospital	7	3	1	7	3	1	7	2	0
	Prince George's Hospital Center	9	4	2	9	4	2	9	4	2
	MedStar Southern Maryland Hospital Center	10	3	2	10	3	2	10	3	2
St. Mary's County	MedStar St. Mary's Hospital	5	2	1	6	2	1	6	2	1
<b>SOUTHERN MARYLAND TOTAL</b>		<b>54</b>	<b>30</b>	<b>8</b>	<b>57</b>	<b>29</b>	<b>8</b>	<b>57</b>	<b>27</b>	<b>7</b>
Anne Arundel County	Anne Arundel Medical Center	26	4	3	26	4	3	26	4	3
	Univ. of MD Baltimore Washington Medical Center	16	7	2	16	7	2	16	7	2
Baltimore City	Bon Secours Hospital	5	4	0	5	3	0	5	3	0
	Johns Hopkins Bayview Medical Center	14	6	2	14	6	2	14	6	2
	MedStar Good Samaritan Hospital	11	5	0	11	5	0	11	5	0
	MedStar Harbor Hospital	9	4	1	9	4	1	9	4	2
	MedStar Union Memorial Hospital	21	5	0	21	4	0	21	4	0
	Mercy Medical Center	22	8	2	22	8	2	26	9	2
	Sinai Hospital of Baltimore	25	6	2	25	6	2	25	6	2
	St. Agnes Hospital	19	1	2	19	1	2	19	1	2
	The Johns Hopkins Hospital	61	23	3	61	23	3	61	23	3
	University of Maryland Medical Center	35	12	3	35	12	3	35	12	3
	Univ. of MD Medical Center Midtown Campus	10	8	0	10	8	0	10	8	0
	Univ. of MD Rehabilitation & Orthopaedic Institute	6	1	0	6	1	0	6	1	0
Baltimore County	Greater Baltimore Medical Center	30	13	3	30	13	3	30	13	3
	MedStar Franklin Square Hospital	16	5	3	16	5	3	16	5	3
	Northwest Hospital Center	8	2	0	9	2	0	9	2	0
	University of Maryland St. Joseph Medical Center	19	6	2	19	6	2	19	6	2
Carroll County	Carroll Hospital Center	10	3	2	10	3	2	10	3	2
Harford County	University of Maryland Harford Memorial Hospital	4	9	0	4	7	0	4	2	0
	University of MD Upper Chesapeake Medical Ctr.	11	2	2	11	2	2	11	1	2
Howard County	Howard County General Hospital	13	4	2	13	4	2	13	4	2
<b>CENTRAL MARYLAND TOTAL</b>		<b>391</b>	<b>138</b>	<b>34</b>	<b>392</b>	<b>134</b>	<b>34</b>	<b>396</b>	<b>129</b>	<b>35</b>
Cecil County	Union Hospital of Cecil County	6	5	1	3	5	1	4	7	1
Dorchester County	Univ. of MD Shore Medical Center at Dorchester	4	2	0	4	2	0	4	2	0
Kent County	Univ. of MD Shore Medical Center at Chestertown	3	1	0	3	1	0	3	1	0
Somerset County	Edward W. McCready Memorial Hospital	2	0	0	2	0	0	2	0	0
Talbot County	Univ. of MD Shore Medical Center at Easton	6	1	1	6	1	1	6	1	1
Wicomico County	Peninsula Regional Medical Center	13	3	2	13	3	2	13	3	2
Worcester County	Atlantic General Hospital	4	3	0	4	4	0	4	4	0
<b>EASTERN SHORE TOTAL</b>		<b>38</b>	<b>15</b>	<b>4</b>	<b>35</b>	<b>16</b>	<b>4</b>	<b>36</b>	<b>18</b>	<b>4</b>
<b>MARYLAND TOTAL</b>		<b>557</b>	<b>216</b>	<b>58</b>	<b>590</b>	<b>221</b>	<b>65</b>	<b>595</b>	<b>216</b>	<b>65</b>

Source: Maryland Health Care Commission, ACHI, Supplemental Services Survey, Surgical Services: 2014 - 2016

## Obstetric and Perinatal Services Capacity

Thirty-three of the 47 general hospitals in Maryland provide obstetric and perinatal services. Table 21 outlines the distribution of obstetric service capacity by region, county and hospital.

**Table 21. Obstetric Service Capacity, Maryland Hospitals, June 1, 2016**

Jurisdiction/ Region	Hospital	Labor Beds	Delivery Beds	Recovery Beds	Ante Partum	Post Partum Beds	Labor- Delivery Beds	Labor- Delivery- Recovery (LDR) Beds	Labor- Delivery- Recovery- PostPartu m (LDRP) Beds	Cesarean Section ORs
Allegany County	Western Maryland Regional Medical Center	0	0	2	2	14	0	4	0	2
Frederick County	Frederick Memorial Hospital	0	0	0	0	27	0	9	0	2
Garrett County	Garrett County Memorial Hospital	1	0	0	2	2	0	1	3	0
Washington County	Meritus Medical Center	0	0	0	6	6	0	0	18	2
<b>WESTERN MARYLAND TOTAL</b>		<b>1</b>	<b>0</b>	<b>2</b>	<b>10</b>	<b>49</b>	<b>0</b>	<b>14</b>	<b>21</b>	<b>6</b>
Montgomery County	Adventist HealthCare Shady Grove Medical Center	0	0	6	8	48	0	16	0	3
	Adventist HealthCare Washington Adventist Hospital	0	0	0	0	20	0	9	0	2
	Holy Cross Germantown Hospital	0	0	2	4	12	0	5	0	2
	Holy Cross Hospital	0	0	0	16	68	0	24	0	4
	MedStar Montgomery General Hospital	2	0	2	2	11	0	5	0	2
<b>MONTGOMERY COUNTY TOTAL</b>		<b>2</b>	<b>0</b>	<b>10</b>	<b>30</b>	<b>159</b>	<b>0</b>	<b>59</b>	<b>0</b>	<b>13</b>
Calvert County	Calvert Memorial Hospital	0	0	0	1	12	0	5	0	1
Charles County	Univ. of MD Charles Regional Medical Center	0	0	0	2	12	0	4	0	1
Prince George's County	Laurel Regional Hospital	0	0	0	0	0	0	0	0	0
	Prince George's Hospital Center	0	0	0	0	38	0	11	2	2
	MedStar Southern Maryland Hospital Center	0	0	4	0	30	0	8	0	2
	<i>Total: Prince George's County</i>	<i>0</i>	<i>0</i>	<i>4</i>	<i>0</i>	<i>68</i>	<i>0</i>	<i>19</i>	<i>2</i>	<i>4</i>
St. Mary's County	MedStar St. Mary's Hospital	0	0	0	1	12	0	5	0	1
<b>SOUTHERN MARYLAND TOTAL</b>		<b>0</b>	<b>0</b>	<b>4</b>	<b>4</b>	<b>104</b>	<b>0</b>	<b>33</b>	<b>2</b>	<b>7</b>
Anne Arundel County	Anne Arundel Medical Center	0	0	5	4	36	0	24	0	3
	Univ. of MD Baltimore Washington Medical Ctr.	0	0	4	0	18	0	4	0	2
	<i>Total: Anne Arundel County</i>	<i>0</i>	<i>0</i>	<i>9</i>	<i>4</i>	<i>54</i>	<i>0</i>	<i>28</i>	<i>0</i>	<i>5</i>
Baltimore City	Johns Hopkins Bayview Medical Center	0	0	2	0	22	0	6	0	2
	MedStar Harbor Hospital	0	0	0	0	8	0	0	16	2
	Mercy Medical Center	0	0	3	3	29	0	13	0	2
	Sinai Hospital of Baltimore	0	0	3	0	27	0	8	0	2
	St. Agnes Hospital	0	0	0	0	0	0	12	0	2
	The Johns Hopkins Hospital	0	0	3	0	35	0	10	0	3
	University of Maryland Medical Center	5	0	3	8	14	0	7	0	3
	<i>Total: Baltimore City</i>	<i>5</i>	<i>0</i>	<i>0</i>	<i>11</i>	<i>135</i>	<i>0</i>	<i>56</i>	<i>16</i>	<i>16</i>
Baltimore County	Greater Baltimore Medical Center	0	0	0	12	48	0	17	0	3
	MedStar Franklin Square Hospital	0	0	5	0	17	0	0	20	3
	University of Maryland St. Joseph Medical Center	0	0	0	9	20	0	9	0	2
	<i>Total: Baltimore County</i>	<i>0</i>	<i>0</i>	<i>5</i>	<i>21</i>	<i>85</i>	<i>0</i>	<i>26</i>	<i>20</i>	<i>8</i>
Carroll County	Carroll Hospital Center	0	0	2	0	5	0	0	15	2
Harford County	University of MD Upper Chesapeake Medical Center	0	0	2	0	0	0	0	14	2
Howard County	Howard County General Hospital	0	0	2	3	34	0	12	0	2
<b>CENTRAL MARYLAND TOTAL</b>		<b>5</b>	<b>0</b>	<b>20</b>	<b>39</b>	<b>313</b>	<b>0</b>	<b>122</b>	<b>65</b>	<b>35</b>
Cecil County	Union Hospital of Cecil County	0	0	0	0	3	0	0	8	1
Talbot County	Univ. of MD Shore Medical Center at Easton	0	0	1	3	0	0	0	10	1
Wicomico County	Peninsula Regional Medical Center	0	0	0	0	20	0	13	0	2
<b>EASTERN SHORE TOTAL</b>		<b>0</b>	<b>0</b>	<b>1</b>	<b>3</b>	<b>23</b>	<b>0</b>	<b>13</b>	<b>18</b>	<b>4</b>
<b>MARYLAND TOTAL</b>		<b>8</b>	<b>0</b>	<b>37</b>	<b>86</b>	<b>648</b>	<b>0</b>	<b>241</b>	<b>106</b>	<b>65</b>

Source: Maryland Health Care Commission, ACHI, Supplemental Survey, Obstetric Service Capacity, June 1, 2016

Newborn nursery bassinets at the 33 hospitals providing perinatal service are shown below in Table 22.

**Table 22. Newborn Nursery Bassinets:  
Maryland Hospitals, FY 2017**

<b>Jurisdiction/ Region</b>	<b>Hospital</b>	<b>Newborn Nursery</b>	<b>Premature Nursery</b>	<b>Neonatal Intensive Care</b>	<b>Total Bassinets</b>
Allegany County	Western Maryland Regional Medical Center	20	0	0	20
Frederick County	Frederick Memorial Hospital	30	0	30	60
Garrett County	Garrett County Memorial Hospital	12	0	0	12
Washington County	Meritus Medical Center	41	0	0	41
<b>WESTERN MARYLAND TOTAL</b>		<b>103</b>	<b>0</b>	<b>30</b>	<b>133</b>
Montgomery County	Adventist HealthCare Shady Grove Medical Center	48	0	31	79
	Washington Adventist Hospital	36	0	0	36
	Holy Cross Germantown Hospital	17	8	0	25
	Holy Cross Hospital	113	0	46	159
	MedStar Montgomery General Hospital	18	0	0	18
<b>MONTGOMERY COUNTY TOTAL</b>		<b>232</b>	<b>8</b>	<b>77</b>	<b>317</b>
Calvert County	Calvert Memorial Hospital	12	0	0	12
Charles County	Univ. of MD Charles Regional Medical Center	15	0	0	15
Prince George's County	Prince George's Hospital Center	40	0	13	53
	MedStar Southern Maryland Hospital Center	16	8	0	24
	<i>Total: Prince George's County</i>	<i>56</i>	<i>8</i>	<i>13</i>	<i>77</i>
St. Mary's County	MedStar St. Mary's Hospital	16	0	0	16
<b>SOUTHERN MARYLAND TOTAL</b>		<b>99</b>	<b>8</b>	<b>13</b>	<b>120</b>
Anne Arundel County	Anne Arundel Medical Center	40	0	30	70
	Univ. of MD Baltimore Washington Medical Center	15	0	0	15
	<i>Total Anne Arundel County</i>	<i>55</i>	<i>0</i>	<i>30</i>	<i>85</i>
Baltimore City	Johns Hopkins Bayview Medical Center	20	0	25	45
	MedStar Harbor Hospital	44	0	0	44
	Mercy Medical Center, Inc.	40	0	26	66
	Sinai Hospital of Baltimore	35	0	21	56
	St. Agnes Healthcare	36	0	24	60
	The Johns Hopkins Hospital	25	0	45	70
	University of Maryland Medical Center	24	0	52	76
	<i>Total: Baltimore City</i>	<i>224</i>	<i>0</i>	<i>193</i>	<i>417</i>
Baltimore County	Greater Baltimore Medical Center, Inc.	60	0	30	90
	MedStar Franklin Square Hospital Center	35	0	21	56
	University of Maryland St. Joseph Medical Center	20	0	20	40
	<i>Total: Baltimore County</i>	<i>115</i>	<i>0</i>	<i>71</i>	<i>186</i>
Carroll County	Carroll Hospital Center	25	0	0	25
Harford County	University of MD Upper Chesapeake Medical Center	10	0	0	10
Howard County	Howard County General Hospital	30	0	18	48
<b>CENTRAL MARYLAND TOTAL</b>		<b>459</b>	<b>0</b>	<b>312</b>	<b>771</b>
Cecil County	Union Hospital of Cecil County	12	0	0	12
Talbot County	Univ. of MD Shore Medical Center at Easton	18	0	0	18
Wicomico County	Peninsula Regional Medical Center	18	0	10	28
<b>EASTERN SHORE TOTAL</b>		<b>48</b>	<b>0</b>	<b>10</b>	<b>58</b>
<b>MARYLAND TOTAL</b>		<b>941</b>	<b>16</b>	<b>442</b>	<b>1,399</b>

Source: Maryland Health Care Commission, ACHI FY2017



## **Special Hospital Services, Comprehensive Care Facilities in the Hospital Setting, and Hospital-Based Psychiatric Inpatient Care**

Special hospitals are facilities that have an organized medical staff of physicians and that include inpatient beds with medical services. The medical services include physician services and continuous registered professional nursing services, for not less than 24 hours every day, to provide diagnosis and treatment for patients who have specific medical conditions. In Maryland, special hospitals provide specialized rehabilitation, chronic care, pediatric and psychiatric services. Special hospital services may be provided on the campus of a general hospital. With the exception of acute care psychiatric beds located within general hospitals, which are included as part of the general hospital's licensed acute care bed capacity, special hospital beds are separately licensed from general hospital beds. Special hospital beds are not included in the formula-driven annual relicensure process for acute care beds located in general hospitals. Thus, there should be consistency between licensed bed inventory and physical bed capacity reported for a specialty hospital.

### **Special Hospital Medical Rehabilitation Services**

Acute inpatient rehabilitation is defined, at COMAR 10.24.09, as interdisciplinary care provided to persons with disabilities who are at high risk of potential medical instability, have a potential for needing skilled nursing care of a high medical acuity, and require a mix of services, service intensity levels, and settings of the following type:

1. Regular, direct individual contact by a physiatrist or physician of equivalent training and/or experience in rehabilitation who serves as their lead provider;
2. Daily rehabilitation nursing for multiple and/or complex needs;
3. A minimum of three hours of physical or occupational therapy per day, at least five days per week, in addition to therapies or services from a psychologist, a social worker, a speech-language pathologist, and a therapeutic recreation specialist, as determined by the individual's needs; or
4. Based on their individual needs, other services provided in a health care facility that is licensed as a hospital.

There are five (5) licensed special hospitals that provide medical rehabilitation services in Maryland and ten (10) Maryland acute care hospitals have special hospital units that provide medical rehabilitation services. Table 23 profiles the types of rehabilitation programs offered at these facilities, the number of licensed beds, and the number of licensed beds that are regularly staffed. Staffed beds are defined as the number of beds regularly maintained (set up and staffed for use) for inpatients. In this table, adult patients are defined as 18 years of age and older and pediatric patients are patients under the age of 18. The program listings are medical rehabilitation services that are accredited by the Commission on Accreditation of Rehabilitation Facilities (CARF). CARF is an independent nonprofit accrediting body of human service providers in the areas of aging services, behavioral health, child and youth services, durable medical equipment, prosthetics, orthotics and orthotic supplies, employment and community services, medical rehabilitation, and opioid treatment programs. CARF accreditation is required by the State of Maryland for licensure of rehabilitation facilities.

**Table 23. Inpatient Medical Rehabilitation Services by Region and Jurisdiction, June 1, 2016**

Jurisdiction/ Region	Hospital	CARF Accredited Inpatient Medical Rehabilitation Programs Offered										Licensed Beds	Staffed Beds
		Comprehensive		Brain Injury		Spinal Cord		Stroke		Amputation			
		Adult	Pediatric	Adult	Pediatric	Adult	Pediatric	Adult	Pediatric	Adult	Pediatric		
Allegany County	Western Maryland Regional Medical Center	√						√				13	13
Washington County	Meritus Medical Center	√		√								20	20
Western Maryland Total												33	33
Montgomery County	Adventist Rehabilitation Hospital of Maryland	√		√		√		√		√		87	87
Montgomery County Total												87	87
Prince George's County	Laurel Regional Hospital	√						√				28	10
Southern Maryland Total												28	9
Baltimore City	Univ. of MD Rehabilitation & Orthopaedic Institute	√	√	√	√	√	√	√	√			82	129
	Johns Hopkins Bayview Medical Center	√						√				9	9
	Kennedy Krieger Children's Hospital		√		√			√				31	31
	Levindale Hebrew Geriatric Center & Hospital	√		√				√				20	20
	MedStar Good Samaritan Hospital	√						√				51	69
	MedStar Union Memorial Hospital*											18	N/A
	Mount Washington Pediatric Hospital		√									46	26
	Sinai Hospital of Baltimore	√		√				√				57	43
	The Johns Hopkins Hospital	√										18	18
Central Maryland Total												332	216
Talbot County	Univ. of MD Shore Medical Center at Easton	√						√				20	14
Wicomico County	HealthSouth Chesapeake Rehabilitation Center	√										59	59
Eastern Shore Total												79	73
MARYLAND TOTAL												559	418

Source: Maryland Health Care Commission and Commission on Accreditation of Rehabilitation Facilities (CARF) 11/9/2016.

Notes: 1. Licensed Beds for Adventist Rehabilitation Hospital of Maryland at Takoma Park are included in Adventist Rehabilitation of Maryland. 2. University of Maryland Rehabilitation & Orthopaedic Institute (formerly James Lawrence Kernan Hospital) staffed beds include 36 chronic beds/16 dually licensed rehabilitation/chronic beds. 3. MedStar Union Memorial Hospital transferred 18 Rehabilitation Beds to MedStar Good Samaritan, effective November 2016. MedStar Union Memorial reported that there were no staffed beds as of June 1, 2016, while MedStar Good Samaritan reported 69 staffed beds which included the 18 beds previously licensed at MedStar Union Memorial Hospital.

## **Other Special Hospital Services (non-psychiatric)**

### **Pediatric**

Facilities with beds licensed as Special Hospital – Pediatric are used to provide specialized inpatient services to patients less than 18 years of age. There are two special hospitals in Maryland dedicated to providing specialized pediatric services. Both hospitals provide rehabilitation and other special hospital services. Mount Washington Pediatric Hospital has been allowed to operate, under a single license, its main hospital facility in Baltimore City and a 15-bed hospital in Prince George's County, which operates in leased space at Prince George's Hospital Center, a general hospital. (See Table 24).

### **Chronic Care**

Facilities with beds licensed as Special Hospital-Chronic provide continuous and intensive medical, nursing, and ancillary services to medically-complex patients with severe illness who require close professional monitoring and observation and frequent medical interventions, either after an acute hospital phase of care or as a result of acute exacerbations of illness while residing in other settings, such as the patient's home or a nursing home (comprehensive care facility).

There are three special hospitals—chronic operating in Maryland. (See Table 24.) They range in size from 60 to 100 beds, and are currently licensed to operate 226 beds but only 140 are reported to be regularly staffed. One chronic hospital is private, and two are state-operated. The private chronic special hospital, Levindale Hebrew & Geriatric Center & Hospital, is located in the Central Maryland region. The two state operated chronic hospitals are each located in the less densely populated Health Planning Regions of Western Maryland and the Eastern Shore. Four acute care general hospitals, three located in Baltimore City and one in Prince George's County (the Southern Maryland region) provide chronic special hospital services. The three Central Maryland Hospitals have a total of 192 licensed chronic care beds located on their campuses, with 121 reported to be staffed. The Mount Washington Pediatric Hospital at Prince George's Hospital Center (see preceding section of this report concerning pediatric special hospitals) has 15 licensed pediatric specialty beds with 12 reported to be staffed.

Chronic beds operated on an acute care hospital campus are licensed separately and are not part of the annual acute care bed licensure process.

**Table 24. Licensed Special Hospitals and their Special Hospital (Non-Psychiatric and Non-Rehabilitation) Beds Maryland, June 1, 2016**

Jurisdiction/ Region	Specialty Hospitals	Pediatric		Chronic	
		Licensed	Staffed	Licensed	Staffed
Washington County	Western Maryland Center	-	-	60	22
	<b>Western Maryland Total</b>	<b>-</b>	<b>-</b>	<b>60</b>	<b>20</b>
Prince George's County	Mt. Washington Pediatric Hospital at Prince Georges Hospital Ctr.	15	12	-	-
	<b>Southern Maryland Total</b>	<b>15</b>	<b>12</b>	<b>-</b>	<b>-</b>
Baltimore City	Kennedy Krieger Children's Hospital	39	39	-	-
	Levindale Hebrew Geriatric Center & Hospital	-	-	100	100
	Mount Washington Pediatric Hospital	56	40	-	-
	<b>Central Maryland Total</b>	<b>95</b>	<b>79</b>	<b>100</b>	<b>100</b>
Wicomico County	Deer's Head Center*	-	-	66	23
	<b>Eastern Shore Total</b>	<b>-</b>	<b>-</b>	<b>66</b>	<b>20</b>
	<b>Maryland Total</b>	<b>110</b>	<b>91</b>	<b>226</b>	<b>140</b>

Source: Maryland Health Care Commission, Office of Health Care Quality, DHMH, Hospital Management System  
Deer's Head Center has 3 staffed communicable disease (isolated beds)

**Table 25. Licensed Special Hospital (Non-Psychiatric and Non-Rehabilitation) Beds:  
Located on Acute Care Hospital Campuses, Maryland, June 1, 2016**

Jurisdiction/ Region	Acute Care Hospitals	Chronic		Dual Rehabilitation/ Chronic		Pediatric Specialty	
		Licensed	Staffed	Licensed	Staffed	Licensed	Staffed
Baltimore City/Central Maryland	Univ. of MD Rehabilitation & Orthopaedic Institute*	36	36	16	16	-	-
Baltimore City/Central Maryland	Johns Hopkins Bayview Medical Center	76	50	-	-	-	-
Baltimore City/Central Maryland	Univ. of MD Medical Center Midtown Campus	80	35	-	-	-	-
Prince George's/Southern Maryland	Mt. Washington Pediatric Hosp. at Prince George's Hosp.	-	-	-	-	15	12
Prince George's/Southern Maryland	Laurel Regional Hospital	46	20	-	-	-	-
	<b>Maryland State Total</b>	<b>238</b>	<b>141</b>	<b>16</b>	<b>16</b>	<b>15</b>	<b>12</b>

Source: Maryland Health Care Commission; Office of Health Care Quality, June 1, 2016. \*Univ. of MD Rehabilitation & Orthopaedic Institute staffed chronic beds may exceed licensed beds through use of dually licensed Rehabilitation/Chronic Care beds.

### **Comprehensive Care Facility (Nursing Home) Beds in the Hospital Setting**

Comprehensive Care Facilities (“CCFs”), commonly known as “nursing homes,” are licensed in accordance with COMAR 10.07.02. These facilities admit patients suffering from disease or disabilities, or advanced age, requiring medical service and nursing service rendered by or under the supervision of a registered nurse. The vast bulk of CCF services are provided in Maryland through freestanding (non-hospital) CCFs, commonly known as nursing homes. Only 3.8% of the state’s total CCF beds are located in general or special hospital settings. However, this type of inpatient facility service is also offered by six (6) acute care general hospitals (Table 26) and by three (3) facilities that combine comprehensive care facility services (Table 27) with chronic care services (Table 24). CCF beds in general hospitals are primarily used to provide short-term rehabilitative services to Medicare patients. In contrast, most of the state’s CCF beds are used to provide longer-term chronic and custodial care.

**Table 26. Licensed Comprehensive Care Facility Beds at Acute Care Hospitals, Maryland, June 1, 2016**

<b>Jurisdiction/ Region</b>	<b>Hospital</b>	<b>Licensed Comprehensive Care Facility Beds</b>	<b>Staffed Beds</b>
Garrett County	Garrett County Memorial Hospital	10	10
<b>Western Maryland Total</b>		<b>10</b>	<b>10</b>
Calvert County	Calvert Memorial Hospital	18	14
<b>Southern Maryland Total</b>		<b>18</b>	<b>14</b>
Baltimore City	MedStar Good Samaritan Hospital	30	30
	Mercy Medical Center	29	29
Baltimore County	Greater Baltimore Medical Center	25	25
	Northwest Hospital Center*	29	29
<b>Central Maryland Total</b>		<b>113</b>	<b>113</b>
<b>Maryland Total - Acute Care Hospitals</b>		<b>141</b>	<b>137</b>

Source: Maryland Health Care Commission, Office of Health Care Quality

**Table 27. Licensed Comprehensive Care Facility Beds at Special Hospitals  
June 1, 2016**

<b>Jurisdiction/ Region</b>	<b>Hospital</b>	<b>Licensed Comprehensive Care Facility Beds</b>	<b>Staffed Beds</b>
Wicomico County/ Eastern Shore	Deer's Head Center	80	56
Baltimore City/ Central Maryland	Levindale Hebrew Geriatric Center & Hospital	210	210
Washington County/ Western Maryland	Western Maryland Center	63	42
<b>Maryland State Total</b>		<b>353</b>	<b>308</b>

Source: Maryland Health Care Commission, Office of Health Care Quality, DHMH, Hospital Management System

### **Psychiatric Hospital Facilities and Services**

In Maryland, two types of hospital-level inpatient psychiatric services are provided; acute psychiatric services and longer-term, continuing care. Most acute inpatient psychiatric care is provided within the general hospital setting at 29 hospitals. These psychiatric beds are included in the annual “dynamic” licensure process for all acute care beds located in acute care general hospitals in which the licensed acute care bed inventory is based on recorded average daily census. Hospital-level psychiatric inpatient care outside of the acute care general hospital setting can be found in freestanding private hospitals or in state hospitals. The psychiatric beds in these two facility types are licensed as a category of “special hospital” beds under the State’s licensing statute. Freestanding private psychiatric hospitals primarily provide acute psychiatric inpatient services. State psychiatric hospitals primarily provide long-term, psychiatric inpatient services.

Table 28 provides an overview of the acute psychiatric inpatient service bed capacity and program characteristics of general hospitals. In general, services for children are provided to a patient population under the age of 13 years, adolescent services are provided to patients aged 13 to 17, and adult services are provided to patients aged 18 years and older.

**Table 28. Inpatient Acute Psychiatric Services Available at General Acute Care Hospitals:  
Maryland, FY 2017**

Jurisdiction/ Region		Designated FY 2017 Licensed	Acute Adult	Acute Child	Acute Adolescent	Acute Geriatric	Accept Involuntary Patients
Allegany County	Western Maryland Regional Medical Center	19	√			√	√
Frederick County	Frederick Memorial Hospital	21	√			√	√
	Meritus Medical Center	18	√			√	√
<b>Western Maryland Total</b>		<b>58</b>					
Montgomery County	Adventist HealthCare Washington Adventist Hospital	39	√				√
	Holy Cross Germantown Hospital	6	√				No
	MedStar Montgomery General Hospital	19	√		√		No
	Suburban Hospital	24	√		√	√	No
<b>Montgomery County Total</b>		<b>88</b>					
Calvert County	Calvert Memorial Hospital	9	√		√		√
Prince George's County	Laurel Regional Hospital	18	√				No
	MedStar Southern Maryland Hospital Center	25	√			√	√
	Prince George's Hospital Center	28	√				√
St. Mary's County	MedStar St. Mary's Hospital	12	√				√
<b>Southern Maryland Total</b>		<b>92</b>					
Anne Arundel County	Univ. of MD Baltimore Washington Medical Center	14	√			√	√
Baltimore City	Bon Secours Hospital	24	√				√
	Johns Hopkins Bayview Medical Center	20	√				No
	MedStar Union Memorial Hospital	26	√				
	Sinai Hospital of Baltimore	24	√			√	√
	The Johns Hopkins Hospital	108	√	√			√
	University of Maryland Medical Center	56	√	√		√	√
	Univ. of MD Medical Center Midtown Campus	28	√			√	√
Baltimore County	MedStar Franklin Square Hospital	40	√		√		√
	Northwest Hospital	30	√			√	√
	University of Maryland St. Joseph Hospital	19	√			√	No
Carroll County	Carroll Hospital Center	20	√		√		√
Harford County	University of Maryland Harford Memorial Hospital	26	√				√
Howard County	Howard County General Hospital	20	√			√	√
<b>Central Maryland Total</b>		<b>455</b>					
Cecil County	Union Hospital of Cecil County	11	√			√	√
Dorchester County	University of MD Shore Medical Center at Dorchester	24	√				√
Wicomico County	Peninsula Regional Medical Center	12	√				√
<b>Eastern Shore Total</b>		<b>47</b>					
<b>Maryland State Total</b>		<b>740</b>					

Source: Maryland Health Care Commission survey of psychiatric services capacity, June, 2016.

Note: Western Maryland Regional Medical Center, Washington County Hospital, and Howard County General report that adolescents (defined as 16+) may be provided services in the same section as adults. Suburban combines adolescents (13+), adults and geriatric in a combined unit. Adult and Geriatric units are combined at Frederick Memorial, MedStar Montgomery General Hospital, Laurel Regional, Prince George's Hospital, Sinai, Northwest, and University of Maryland St. Joseph's Hospital.

Tables 29 and 30 profile psychiatric inpatient service capacity and inpatient program characteristics at Special Hospitals – Psychiatric. Table 29 identifies the licensed bed capacity and the number of beds reported to be regularly staffed at Maryland's five freestanding private psychiatric hospitals. Table 30 identifies the number of licensed beds and "budgeted" beds, at Maryland's five state-operated psychiatric hospitals. The number of "budgeted" beds provides a more accurate reflection of the bed capacity that is typically set up and staffed at these facilities than the number of licensed beds.

**Table 29. Inpatient Services Available at Private Special Hospitals - Psychiatric:**  
**Maryland, June 1, 2016**

Jurisdiction/ Region	Special Hospital Name	Licensed Capacity	Staffed Beds	Acute Adult	Acute Child	Acute Adolescent	Acute Geriatric	Accept Involuntary Patients
Washington County	Brook Lane Health Services	65	57	√	√	√		√
<b>Western Maryland Total</b>		<b>65</b>	<b>57</b>					
Montgomery County	Adventist Behavioral Health Rockville	107	118	√	√	√		√
<b>Montgomery County Total</b>		<b>107</b>	<b>118</b>					
Baltimore County	Sheppard and Enoch Pratt Hospital	322	255	√	√	√	√	√
Howard County	Sheppard Pratt at Ellicott City	92	78	√		√		√
<b>Central Maryland Total</b>		<b>414</b>	<b>333</b>					
Dorchester County	Adventist Behavioral Health Eastern Shore*	–	–					
<b>Maryland State Total</b>		<b>586</b>	<b>508</b>					

Source: Maryland Health Care Commission Survey: Special Hospitals - Psychiatric, June 1, 2016

\*Adventist Behavioral Health Eastern Shore closed and temporarily delicensed 15 beds

**Table 30. Inpatient Psychiatric Services Provided at State Special Hospitals - Psychiatric**  
**Maryland, June 1, 2016**

Jurisdiction/ Region	Special Hospital Name	Licensed Psychiatric Beds	Budgeted Psychiatric Beds	Acute Adult	Acute Child	Acute Adolescent	Acute Geriatric	Acute Forensic	Accept Involuntary Patients
Allegany County	Thomas B. Finan Center	119	66						√
<b>Western Maryland Total</b>		<b>119</b>	<b>66</b>						
Baltimore County	Spring Grove Hospital Center	639	355	√		√	√	√	√
Carroll County	Springfield Hospital Center	522	228	√			√		√
Howard County	Clifton T. Perkins Hospital Center	298	248					√	√
<b>Central Maryland Total</b>		<b>1,459</b>	<b>831</b>						
Dorchester County	Eastern Shore Hospital Center	80	60	√			√	√	√
<b>Eastern Shore Total</b>		<b>80</b>	<b>60</b>						
<b>Maryland State Total</b>		<b>1,658</b>	<b>957</b>						

Source: Maryland Health Care Commission Survey: Special Hospitals - Psychiatric, June 1, 2016. DHMH, Hospital Management Information System. Licensed and budgeted bed totals include both acute and continuing care psychiatric beds.

Partial hospitalization programs (PHP) and intensive outpatient programs (IOP) for psychiatric patients are also provided in the acute care general hospital setting and the special hospital psychiatric setting. PHPs and IOPs are organized day or night programs providing assessment, treatment, habilitation, or rehabilitation services for persons who do not require psychiatric inpatient care on a 24-hour basis. This may be a structured, ongoing program that the patient typically attends two to five times a week for two to five hours per day providing clinical behavioral health services. The plan of care is prescribed by and overseen by a psychiatrist. PHPs may be used as a “step-down” from inpatient care or a “step-up” from less intensive outpatient programming and are sometimes called “day hospital” programs. Services are usually provided in a group setting for at least four hours of direct clinical care per day, with additional individual and/or family therapy and medication management as needed. IOPs are a subset of PHPs and would typically involve fewer sessions per week and/or fewer hours per daily session. IOPs may be used as a “step-down” from PHPs or a “step-up” from less intensive outpatient care outside of the institutional setting.

MHCC surveyed the availability of PHPs and IOPs at hospitals, requesting information on the maximum number of treatment “slots” available and the daily program census on four specific dates between September, 2015 and June, 2016. Tables 31 and 32 profile these programs as offered in 22 acute care general hospitals and five freestanding private psychiatric hospitals, respectively.

State-operated psychiatric hospitals do not provide PHP or IOP services. [NOTE: Average daily census is the average number of patients based on patient census for four specific dates between September, 2014 and June, 2015, as reported by each hospital.]

**Table 31. Partial Hospitalization and/or Intensive Outpatient Psychiatric Services at Acute Care Hospitals: Maryland, June 1, 2016**

<b>Jurisdiction/ Region</b>	<b>Acute Care General Hospital Name</b>	<b>Partial Hospitalization/ Intensive Outpatient Programs</b>	<b>Maximum Number of Slots Available</b>	<b>Average Patient Census: Partial Hospitalization/ Intensive Outpatient Programs</b>
Allegany County	Western Maryland Regional Medical Center	√	20	14
Frederick County	Frederick Memorial Hospital	√	15	10
	Meritus Medical Center	√	14	2
<b>Western Maryland Total</b>			<b>49</b>	
	Adventist HealthCare Washington Adventist Hospital	√	20	27
	MedStar Montgomery General Hospital	√	30	24
	Holy Cross Germantown	–	–	–
	Suburban Hospital	√	20	14
<b>Montgomery County Total</b>			<b>50</b>	
Calvert County	Calvert Memorial Hospital	√	30	18
Prince George's County	Laurel Regional Hospital	√	14	13
	MedStar Southern Maryland Hospital Center	√	20	10
	Prince George's Hospital Center	√	14	4
St. Mary's County	MedStar St. Mary's Hospital	√	10	5
<b>Southern Maryland Total</b>			<b>88</b>	
Anne Arundel County	Univ. of MD Baltimore Washington Medical Ctr.	√	16	7
Baltimore City	Bon Secours Hospital	√	19	8
	Johns Hopkins Bayview Medical Center	√	100	58
	MedStar Union Memorial Hospital	√	20	16
	Sinai Hospital of Baltimore	√	12	7
	University of MD Medical Ctr. Midtown Campus	–	–	–
	The Johns Hopkins Hospital	√	32	18
	University of Maryland Medical Center	√	20	6
Baltimore County	MedStar Franklin Square Hospital	–	–	–
	Northwest Hospital	–	–	–
	University of Maryland St. Joseph Hospital	√	25	9
Carroll County	Carroll Hospital Center	√	25	17
Harford County	University of Maryland Harford Memorial Hospital	√	20	13
Howard County	Howard County General Hospital	–	–	–
<b>Central Maryland Total</b>			<b>289</b>	
Cecil County	Union Hospital of Cecil County	–	–	–
Dorchester County	Univ. of MD Shore Medical Center at Dorchester	√	16	10
Wicomico County	Peninsula Regional Medical Center	√	6	4
<b>Eastern Shore Total</b>			<b>22</b>	
<b>Maryland State Total</b>			<b>498</b>	

Source: Maryland Health Care Commission, survey of psychiatric services capacity, June, 2016.

**Table 32. Partial Hospitalization and/or Intensive Outpatient Services at Private Special Hospitals -  
Psychiatric: Maryland, June 1, 2016**

<b>Jurisdiction/Region</b>	<b>Special Hospital - Psychiatric</b>	<b>Partial Hospitalization/ Intensive Outpatient Programs</b>	<b>Maximum Slots Available: Partial Hospitalization/ Intensive Outpatient Programs</b>	<b>Average Daily Census</b>
Washington County	Brook Lane Health Services	√	40	30
	<b><i>Western Maryland Total</i></b>		<b>40</b>	
Montgomery County	Adventist Behavioral Health - Rockville	√	33	18
	<b><i>Montgomery County Total</i></b>		<b>33</b>	
Baltimore County	Sheppard Pratt Hospital	√	125	108
Howard County	Sheppard Pratt at Ellicott City	√	20	16
	<b><i>Central Maryland Total</i></b>		<b>145</b>	
Dorchester County	Adventist Behavioral Health Eastern Shore*	-	-	-
	<b><i>Eastern Shore Total</i></b>	-	-	
	<b><i>Maryland State Total</i></b>		<b>218</b>	

Source: Maryland Health Care Commission survey of psychiatric services capacity, June, 2016

\*Adventist Behavioral Health Eastern Shore closed effective 11/16/2016 and did not report any activity for the survey.

The following Tables (Tables 33, 34 & 35) profile psychiatric hospital bed capacity for the three types of hospital settings, across several bed capacity dimensions, including licensed beds, physical bed capacity, and staffed beds. They also provide recent patient day and bed occupancy rate information for CY2015.



**Table 33. Inventory and Utilization of Psychiatric Beds at General Acute Care Hospitals  
Maryland, 2016**

Jurisdiction/Region	Acute Care General Hospitals	Licensed Beds Designated Psychiatric FY 2017	Beds, June 1, 2016		Patient Days CY 2015	Staffed Bed Occupancy CY2015
			Physical Bed Capacity	Staffed Beds		
Allegany County	Western Maryland Regional Medical Center	19	19	17	4,536	73%
Frederick County	Frederick Memorial Hospital	21	21	21	6,905	90%
	Meritus Medical Center	18	18	18	5,115	78%
<b>Western Maryland Total</b>		<b>58</b>	<b>58</b>	<b>56</b>	<b>16,556</b>	<b>81%</b>
Montgomery County	Adventist HealthCare Washington Adventist Hospital	39	40	40	8,726	60%
	Holy Cross Germantown Hospital	6	6	6	1,533	70%
	MedStar Montgomery General Hospital	19	80	19	4,118	59%
	Suburban Hospital	24	24	24	7,131	81%
<b>Montgomery County Total</b>		<b>88</b>	<b>150</b>	<b>89</b>	<b>21,508</b>	<b>66%</b>
Calvert County	Calvert Memorial Hospital	9	17	9	3,024	92%
Prince George's County	Laurel Regional Hospital	18	18	12	3,315	76%
	MedStar Southern Maryland Hospital Center	25	28	25	6,172	68%
	Prince George's Hospital Center	28	30	28	9,209	90%
St. Mary's County	MedStar St. Mary's Hospital	12	12	12	2,588	59%
<b>Southern Maryland Total</b>		<b>92</b>	<b>105</b>	<b>86</b>	<b>24,308</b>	<b>77%</b>
Anne Arundel County	University of Maryland Baltimore Washington Medical Center	14	14	14	4,082	80%
Baltimore City	Bon Secours Hospital	24	28	20	7,132	98%
	Johns Hopkins Bayview Medical Center	20	20	20	7,546	103%
	MedStar Union Memorial Hospital	26	26	26	8,673	91%
	Sinai Hospital of Baltimore	24	24	24	8,319	95%
	The Johns Hopkins Hospital	108	108	95	32,176	93%
	University of Maryland Medical Center	56	54	41	14,028	94%
	University of Maryland Medical Center Midtown Campus	28	28	25	7,467	82%
Baltimore County	MedStar Franklin Square Hospital	40	40	40	12,099	83%
	Northwest Hospital	30	37	37	7,843	58%
	University of Maryland St. Joseph Medical Center	19	19	19	6,004	87%
Carroll County	Carroll Hospital Center	20	20	20	3,611	49%
Harford County	University of Maryland Harford Memorial Hospital	26	27	20	6,117	84%
Howard County	Howard County General Hospital	20	20	20	5,628	77%
<b>Central Maryland Total</b>		<b>455</b>	<b>465</b>	<b>421</b>	<b>130,725</b>	<b>85%</b>
Cecil County	Union Hospital of Cecil County	11	15	8	2,872	98%
Dorchester County	University of Maryland Shore Medical Center at Dorchester	24	24	15	4,137	76%
Wicomico County	Peninsula Regional Medical Center	12	12	12	3,538	81%
<b>Eastern Shore Total</b>		<b>47</b>	<b>51</b>	<b>35</b>	<b>10,547</b>	<b>83%</b>
<b>Maryland State Total</b>		<b>740</b>	<b>829</b>	<b>687</b>	<b>203,644</b>	<b>81%</b>

Sources: Licensed beds designated as psychiatric, Maryland Health Care Commission and Office of Health Care Quality, Acute General Hospital Licensed Bed Designation, FY 2017. Physical capacity and staffed beds, MHCC Supplemental Survey: Psychiatric Services Capacity, June 1, 2016. Patient Days, Health Services Cost Review Commission, Discharge Abstract, CY 2015. Staffed Occupancy is calculated as (patient days)/(staffed beds\*365)

**Table 34. Inventory and Utilization of Acute Psychiatric Beds at Private Psychiatric Hospitals: Maryland, 2016**

Jurisdiction/Region	Private Special Hospital - Psychiatric	Beds, June 1, 2016			Patient Days CY2015	Staffed Bed Occupancy CY2015
		Licensed Beds	Physical Bed Capacity	Staffed Beds		
Washington County/ Western Maryland	Brook Lane Health Services	65	57	57	13,002	62%
Montgomery County/ Montgomery	Adventist Behavioral Health - Rockville	107	136	118	26,338	61%
Dorchester County/ Eastern Shore	Adventist Behavioral Health - Eastern Shore*	15	15	15	2,990	55%
Baltimore County/ Central Maryland	Sheppard Pratt Hospital	322	322	257	83,339	89%
Howard County/ Central Maryland	Sheppard Pratt at Ellicott City	92	92	78	22,268	78%

Sources: Licensed Beds, Office of Health Care Quality; Physical Capacity and Staffed Beds, Maryland Health Care Commission June, 2016 Survey; Psychiatric Service Capacity; Patient Days, Health Services Cost Review Commission, Discharge Database, CY2016.

Staffed Occupancy is calculated using the formula, (patient days)/(staffed beds\*365).

\*Adventist Behavioral Health - Eastern Shore delicensed their 15 beds in 2016.

Note: Staffed beds may fluctuate/change during the course of the surveyed year.

**Table 35. Inventory and Utilization of Psychiatric Beds at State Psychiatric Hospitals: Maryland, 2016**

Jurisdiction/Region	State Psychiatric Special Hospitals	Beds, June 1, 2016						Patient Days FY 2015	Staffed Bed Occupancy FY 2015
		Licensed Beds	State Budgeted Beds	Physical Bed Capacity		Staffed Beds			
				Acute Care	Continuing Care	Acute Care	Continuing Care		
Allegany County	Thomas B. Finan Center	119	66	44	22	44	22	24,457	102%
Western Maryland Total		119	66	44	22	44	22	24,457	102%
Baltimore County	Spring Grove Hospital Center	639	355	148	335	109	266	133,284	97%
Carroll County	Springfield Hospital Center	522	228	100	152	100	152	84,607	92%
Howard County	Clifton T. Perkins Hospital Center	298	245	20	251	18	230	88,153	97%
Central Maryland Total		1,459	828	268	738	227	648	306,044	96%
Dorchester County	Eastern Shore Hospital Center	80	60	80	0	76	0	21,926	100%
Eastern Shore Total		80	60	80	0	60	0	21,926	100%
Maryland State Total		1,658	954	372	760	331	670	352,427	96%

Source: Staffed beds and physical bed capacity: Maryland Health Care Commission Survey: Special Hospitals - Psychiatric, June 1, 2016; Licensed bed inventory, Office of Health Care Quality, DHMH; budgeted beds, patient days, Hospital Management Information System.

Staffed Occupancy is calculated using the formula, (patient days)/(staffed beds\*365).







4160 Patterson Avenue  
Baltimore, Maryland 21215  
Telephone: (410) 764-3460  
FAX: (410) 358-1236  
Toll Free: 1 (877) 245-1762  
TDD: 1 (800) 735-2258  
<http://mhcc.maryland.gov>