

Annual Report on Selected Maryland Acute Care and Special Hospital Services

Fiscal Year **2018**

Effective July 1, 2017



Posted to the MHCC website on June 28, 2018

Annual Report on Selected Maryland Acute Care and Special Hospital Services

Fiscal Year **2018**



Center for Health Care Facilities
Planning & Development

Table of Contents

	Page
Background	1
Acute Care Hospital Bed Capacity	1
Licensed Acute Care Hospital Beds in Maryland: FY 2019	2
Demand for Hospital Beds in Maryland Compared with Regional and National Trends	8
Critical Care Beds.....	12
Monitored Beds.....	13
Hospital System Affiliation.....	15
Total Available Acute Care Bed Capacity.....	18
Observation Services	20
Emergency Department/Freestanding Medical Facility Treatment Capacity.....	22
Hospital Surgical Services Capacity.....	26
Obstetric and Perinatal Services Capacity	30
Special Hospital Services, Comprehensive Care Facilities in the Hospital Setting, and Hospital-Based Psychiatric Care	32
Special Hospital Medical Rehabilitation Services.....	32
Other Special Hospital Services (non-psychiatric) Pediatric.....	33
Chronic Care.....	33
Comprehensive Care Beds in the Hospital Setting.....	34
Psychiatric Hospital Facilities and Services	35

Tables and Charts

Tables:

1	Licensed Acute Care Beds by Hospital and Service: Maryland, FY 2018	3
2	Trend in Licensed Acute Care Beds by Hospital: Maryland, FY 2009 - 2018	4

3	Percent Change in Total Licensed Acute Care Hospital Beds, by Maryland Region: FY 2009 – 2018	5
4	Change in Number of Total Licensed Acute Care Beds by Region: Maryland Hospitals, FY 2017 - 2018	7
5	Allocation of Licensed Acute Care Beds by Service: Maryland Hospitals, FY 2009 - 2018.....	8
6	Allocation of Licensed Acute Care Beds by Service (Percentage), Maryland Hospitals, FY2009 - FY2018	8
7	Proportion of Total Population Aged 65 and Older, South Atlantic Census Region States, 2016 Estimate.....	9
8	Critical Care Bed Inventory: Maryland Hospitals, FY 2018.....	12
9	Licensed Acute Care Beds with Monitoring Capability: Maryland Hospitals, FY 2018.....	14
10	Trend in Hospitals and Licensed Acute Care Beds Capacity by Hospital System Affiliation: FY 2009 – 2018.....	16
11	Multihospital Systems and Independent Hospitals and Beds by System Status, Maryland, F Y 2011 – 2018.....	17
12	Total Available Acute Care Bed Capacity Reported by Maryland Hospitals, June 1, 2017..	19
13	Maryland Acute Care General Hospital Observation (OBV) Services, June 1, 2017.....	21
14	Summary – Acute Care Hospital Observation Beds, June 1, 2017	22
15	Change in Emergency Department/Freestanding Medical Facility Treatment Capacity: Maryland, 2016 – 2017.....	23
16	Inventory of Emergency Department/Freestanding Medical Facility Treatment Capacity: Maryland Hospitals: June 1, 2017	24
17	Trends in Emergency Department/Freestanding Medical Facility Treatment Capacity: Maryland Hospitals, June 1, 2010 - June 1, 2017.....	25
18	Surgical Services Capacity by Hospital and Room Use: Maryland Hospitals, June 1, 2017.....	27
19	Dedicated Cesarean Section Operating Rooms and Procedure Rooms by Hospital: Maryland Hospitals, June 1, 2017.....	28
20	Trends in Number of Surgical Rooms: Maryland Hospitals, 2015 – 2017.....	29
21	Obstetric Service Capacity: Maryland Hospitals, June 1, 2017.....	30

22	Newborn Nursery Bassinets, Maryland Hospitals, FY 2018.....	31
23	Inpatient Medical Rehabilitation Facilities and Services by Region and Jurisdiction, June 1, 2017.....	33
24	Licensed Special Hospital and their Special Hospital (Non-Psychiatric and Non- Rehabilitation) Beds, Maryland, June 1, 2017.....	34
25	Licensed Special Hospitals (Non-Psychiatric and Non-Rehabilitation) Beds, Located On Acute Care Hospital Campuses: Maryland, June 1, 2017	34
26	Licensed Comprehensive Care Beds at Acute Care Hospitals: Maryland, June 1, 2017.....	35
27	Licensed Comprehensive Care Beds at Special Hospitals: June 1, 2016	35
28	Inpatient Acute Psychiatric Services Available at General Acute Care Hospitals, Maryland, FY 2018.....	36
29	Inpatient Psychiatric Services Available at Private Special Hospitals – Psychiatric, Maryland, June 1, 2017.....	37
30	Inpatient Psychiatric Services Provided at State Special Hospitals – Psychiatric, Maryland, June 1, 2017.....	37
31	Partial Hospitalization and/or Intensive Outpatient Psychiatric Services at Acute General Hospitals Providing Inpatient Psychiatric Services, June 1. 2017.....	38
32	Partial Hospitalization and/or Intensive Outpatient Services at Private Special Hospitals, Psychiatric: June 1, 2017.....	39
33	Inventory and Utilization of Psychiatric Beds at General Acute Care Hospitals, Maryland, F Y 2018	40
34	Inventory and Utilization of Psychiatric Beds at Private Psychiatric Hospitals: Maryland, June 1, 2017	41
35	Inventory and Utilization of Psychiatric Beds at State Psychiatric Hospitals: Maryland, June 1, 2017	41

Charts:

1	Year to Year Change in Total Licensed Acute Care Beds: Maryland Hospitals, FY 2009 – FY 2018.....	5
2	Total Licensed Acute Care Beds: Maryland Hospitals, FY 2009 – 2018	6
3	Trend in Average Daily Acute Care Patient Census: Maryland Hospitals, CY 1980 – 2017.....	6

4	Hospital Admissions per 1,000 Population, All Hospital Unit Admissions (Excludes NH Unit Admissions) South Atlantic Census Region States 2009 – 2016.....	9
5	Hospital Average Length of Stay, All Hospital Unit Admissions (Excludes NH Unit Admissions) South Atlantic Census Region States 2006 – 2017.....	10
6	Hospital Admissions per 1,000 Population, All Hospital Unit Admissions (Excludes NH Unit Admissions) U.S. and Maryland, 1996 – 2016.....	11
7	Hospital Average Length of Stay, All Hospital Unit Admissions (Excludes NH Unit Admissions) U.S. and Maryland, 1996 – 2016.....	11
8	Comparison of Multihospital Systems and Non-Multihospital System Hospitals, Maryland, FY 2009 - FY2018.....	17
9	Change in Number of Emergency Treatment Spaces by Type of Space: Maryland, 2007 – 2017.....	26

Annual Report Fiscal Year 2018

Selected Maryland

General and Special Hospital Services:

Background

An Annual Report profiling changes in licensed acute care hospital beds in Maryland's general hospitals was initiated in 2001 to document and track changes in the licensed bed inventory following implementation of a standardized annual licensure renewal process. The process is based on inpatient census and involves notifying hospitals prior to the beginning of each fiscal year concerning the calculated total number of licensed acute care beds for the coming fiscal year. In turn, the hospitals identify the allocation of the total licensed acute care beds across four (4) service categories: medical/surgical/gynecological/addictions ("MSGA"); obstetric, pediatric, and acute psychiatric services. Over time, additional information on hospital service capacity, covering emergency department services, surgical services, obstetric, perinatal services, observation services, and non-acute care and non-general hospital bed capacity has been added to the survey.

Acute Care Hospital Bed Capacity

Licensed bed capacity for acute care hospitals in the State of Maryland is dynamic, calculated annually based on average daily acute care inpatient census. The Maryland Health Care Commission, in conjunction with the Health Services Cost Review Commission, calculates the average daily census (ADC) of acute care patients for each hospital for the 12-month period ending with the first quarter of each year and total licensed acute care bed capacity is established for the next fiscal year at 140% of the hospital's average daily census. This licensure approach reflects an assumption that an average annual occupancy rate of approximately 71% for acute care hospital beds is an appropriate bench-mark for determining the maximum number of beds an acute care hospital needs to operate.

The initial implementation of this licensure process in FY 2001 resulted in a total of 9,562 licensed acute care beds, removing 2,773 beds from the licensure rolls. Total licensed acute care bed capacity increased, in response to increases in average daily patient census each year after the initial reduction in 2001, peaking at 10,880 beds for FY 2011. In FY 2012 the total number of licensed acute care hospital beds in Maryland declined to 10,729 and licensed beds continued declining through FY 2017 declining in that year to 9,555 licensed beds. In FY 2018 there was a slight increase in licensed beds to 9,611 (less than one percent). Overall, Maryland experienced a 13.8% increase in the average daily census of acute care patients between 2000 and 2010 and then experienced a 12.2% decline in acute care ADC between 2010 and 2017.

NOTES:

In 2017 the University of Maryland Medical System (UMMS) acquired Dimensions Healthcare System, which included Laurel Regional Hospital, Prince George's Hospital Center and the freestanding medical facility, Bowie Health Center.

Effective September 1, 2017 Dimensions Health Care System was renamed University of Maryland Capital Region Health and is now part of UMMS. The "University of Maryland" title was added to the names of the hospitals and facilities to reflect the new ownership. The names of the hospitals are now University of Maryland Laurel Regional Hospital and University of Maryland Prince George's Hospital Center. The freestanding medical facility, Bowie Health Center, will now be University of Maryland Bowie Health Center.

Also, effective September 14, 2017, Calvert Memorial Hospital of Calvert County changed its' name to CalvertHealth Medical Center (CHMC).

Tables included in the following report utilize the "new" names of the acute care hospitals and the Freestanding Medical Facility.

<u>Previous Name</u>	<u>Current Name</u>
<u>Dimensions Healthcare System</u>	<u>University of Maryland Capital Region Health</u>
Laurel Regional Hospital	University of Maryland Laurel Regional Hospital
Prince George's Hospital Center	University of Maryland Prince George's Hospital Center
Bowie Health Center	University of Maryland Bowie Health Center
Calvert Memorial Hospital	CalvertHealth Medical Center

Licensed Acute Care Hospital Beds in Maryland: FY 2018

Table 1 shows the licensed acute care bed capacity for each acute care hospital, by service, effective July 1, 2017. The calculation of licensed beds for FY 2018, based on each hospital's ADC during the period April 1, 2016 through March 31, 2017, results in a total of 9,611 licensed acute care hospital beds in Maryland. Table 2 shows the ten-year trend in licensed acute care beds by hospital. Table 3 shows the percent change by region.

Table 1: Licensed Acute Care Beds by Hospital and Service: Maryland, FY 2018

Jurisdiction/REGION	Hospital	Licensed Bed Capacity				
		MSGA	Obstetric	Pediatric	Psychiatric	Total
Allegany	Western Maryland Regional	172	8	1	19	200
Frederick	Frederick Memorial	204	27	5	21	257
Garrett	Garrett County Memorial	24	2	1	0	27
Washington	Meritus	198	17	4	18	237
WESTERN MARYLAND		598	54	11	58	721
Montgomery	Adventist HealthCare (AHC) Shady Grove	185	56	25	0	266
	AHC Washington Adventist	145	20	0	39	204
	Holy Cross Germantown	58	8	0	6	72
	Holy Cross of Silver Spring	301	96	6	0	403
	MedStar Montgomery	83	11	2	19	115
	Suburban	203	0	3	24	230
MONTGOMERY COUNTY		975	191	36	88	1,290
Calvert	CalvertHealth	59	6	1	8	74
Charles	University of Maryland (UM) Charles Regional	91	12	6	0	109
Prince George's	Doctors Community	210	0	0	0	210
	Fort Washington	32	0	0	0	32
	MedStar Southern Maryland	123	30	4	25	182
	UM Laurel Regional	45	0	0	16	61
	UM Prince George's	166	34	2	28	230
	<i>Total: Prince George's County</i>	<i>576</i>	<i>64</i>	<i>6</i>	<i>69</i>	<i>715</i>
St. Mary's	MedStar St. Mary's	79	12	6	12	109
SOUTHERN MARYLAND		805	94	19	89	1,007
Anne Arundel	Anne Arundel	317	60	8	0	385
	UM Baltimore Washington	249	15	10	14	288
	<i>Total: Anne Arundel County</i>	<i>566</i>	<i>75</i>	<i>18</i>	<i>14</i>	<i>673</i>
Baltimore City	Bon Secours	45	0	0	24	69
	Johns Hopkins Bayview	295	22	5	20	342
	MedStar Good Samaritan	137	0	0	0	137
	MedStar Harbor	84	24	5	26	139
	MedStar Union Memorial	190	0	2	0	192
	Mercy	141	32	5	0	178
	Sinai of Baltimore	293	27	26	24	370
	St. Agnes	230	20	4	0	254
	The Johns Hopkins	808	35	140	108	1,091
	University of Maryland	622	30	59	56	767
	UM Midtown Campus	62	0	0	28	90
	UM Rehabilitation and Orthopaedics	3	0	0	0	3
<i>Total: Baltimore City</i>		<i>2,910</i>	<i>190</i>	<i>246</i>	<i>286</i>	<i>3,632</i>
Baltimore County	Greater Baltimore	163	60	8	0	231
	MedStar Franklin Square	262	37	9	40	348
	Northwest	165	0	0	37	202
	UM St. Joseph	183	19	4	18	224
	<i>Total: Baltimore County</i>	<i>773</i>	<i>116</i>	<i>21</i>	<i>95</i>	<i>1,005</i>
Carroll	Carroll	99	20	7	20	146
Harford	UM Harford Memorial	57	0	0	29	86
	UM Upper Chesapeake	160	10	1	0	171
<i>Total: Harford County</i>		<i>217</i>	<i>10</i>	<i>1</i>	<i>29</i>	<i>257</i>
Howard	Howard County General	207	34	6	20	267
CENTRAL MARYLAND		4,772	445	299	464	5,980
Cecil	Union	63	5	3	11	82
Dorchester	UM Shore at Dorchester	24	0	0	24	48
Kent	UM Shore at Chestertown	25	0	1	0	26
Somerset	Edward W. McCready Memorial	3	0	0	0	3
Talbot	UM Shore at Easton	95	17	8	0	120
Wicomico	Peninsula Regional	248	20	8	13	289
Worcester	Atlantic General	45	0	0	0	45
EASTERN SHORE		503	42	20	48	613
MARYLAND		7,653	826	385	747	9,611

Source: Maryland Health Care Commission, Acute Care Hospital Licensed Bed Inventory, FY 2018

Table 2. Trend in Licensed Acute Care Beds by Hospital: Maryland, FY 2009 - 2018

Jurisdiction/Region	Hospital	2009	2010	2011	2012	2013	2014	2015	2016	2017	2018
Allegany County	Braddock Hospital	154	-	-	-	-	-	-	-	-	-
	Memorial Hosp. & Med. Ctr. of Cumberland	117	-	-	-	-	-	-	-	-	-
	Western Maryland Regional Medical Center	-	262	252	250	234	200	192	195	198	200
	<i>Total: Allegany County</i>	271	262	252	250	234	200	192	195	198	200
Frederick County	Frederick Memorial Hospital	269	274	276	309	298	297	258	233	239	257
Garrett County	Garrett County Memorial Hospital	36	33	31	30	29	26	23	25	27	27
Washington County	Meritus Medical Center	258	260	258	252	245	237	231	223	227	237
WESTERN MARYLAND TOTAL		834	829	817	841	806	760	704	676	691	721
Montgomery County	Adventist HealthCare Shady Grove Medical Center	293	320	336	339	331	312	305	290	256	266
	Adventist HealthCare Washington Adventist Hospital	292	288	281	271	252	252	232	230	204	204
	Holy Cross Germantown Hospital*	-	-	-	-	-	-	-	93	93	72
	Holy Cross Hospital	408	404	402	409	396	397	391	423	409	403
	MedStar Montgomery General Hospital	165	170	159	158	138	132	120	122	114	115
	Suburban Hospital	238	239	222	233	229	236	220	236	222	230
MONTGOMERY COUNTY TOTAL		1,396	1,421	1,400	1,410	1,346	1,329	1,268	1,394	1,298	1,290
Calvert County	CalvertHealth Medical Center	106	98	98	95	95	92	85	77	76	74
Charles County	Univ. of MD Charles Regional Medical Center	129	120	120	124	110	121	115	110	89	109
Prince George's County	Doctors Community Hospital	195	190	195	219	207	198	182	163	190	210
	Fort Washington Medical Center	43	43	42	41	31	33	31	34	32	32
	MedStar Southern Maryland Hospital Center	255	246	235	238	239	227	207	208	192	182
	University of Maryland Laurel Regional Hospital	97	95	87	83	77	78	74	60	63	61
	University of Maryland Prince George's Hospital Center	246	254	244	242	224	214	215	237	233	230
	<i>Total: Prince George's County</i>	836	828	803	823	778	750	709	702	710	715
St. Mary's County	MedStar St. Mary's Hospital	108	103	96	90	90	89	82	91	103	109
SOUTHERN MARYLAND TOTAL		1,179	1,149	1,117	1,132	1,073	1,052	991	980	978	1,007
Anne Arundel County	Anne Arundel Medical Center	301	316	324	336	380	385	384	375	370	385
	Univ. of MD Baltimore Washington Medical Center	298	311	321	308	307	319	310	303	293	288
	<i>Total: Anne Arundel County</i>	599	627	645	644	687	704	694	678	663	673
Baltimore City	Bon Secours Hospital	125	126	141	127	115	107	88	72	72	69
	Johns Hopkins Bayview Medical Center	345	346	348	348	355	355	337	341	330	342
	MedStar Good Samaritan Hospital	245	236	235	222	224	206	177	165	155	137
	MedStar Harbor Hospital	215	221	193	179	160	136	120	113	107	139
	MedStar Union Memorial Hospital	292	295	271	231	236	221	205	211	209	192
	Mercy Medical Center	243	244	244	226	233	225	207	184	183	178
	Sinai Hospital of Baltimore	415	413	424	416	426	421	407	392	367	370
	St. Agnes Hospital	307	318	314	296	287	276	264	251	263	254
	The Johns Hopkins Hospital	979	990	994	992	1,000	1,060	1,082	1,129	1,131	1,091
	University of Maryland Medical Center	705	731	757	779	800	816	801	772	750	767
	Univ. of MD Medical Center Midtown Campus	191	180	167	164	155	128	110	107	87	90
	Univ. of MD Rehabilitation & Orthopaedic Institute	11	10	10	9	9	10	10	7	4	3
	<i>Total: Baltimore City</i>	4,073	4,110	4,098	3,989	4,000	3,961	3,808	3,744	3,658	3,632
Baltimore County	Greater Baltimore Medical Center	310	300	285	281	270	255	245	231	232	231
	MedStar Franklin Square Hospital	380	371	376	347	355	347	354	364	353	348
	Northwest Hospital Center	218	221	215	221	225	243	245	199	192	202
	Univ. of MD St. Joseph Medical Center	354	345	300	263	247	232	238	247	232	224
	<i>Total: Baltimore County</i>	1,262	1,237	8,841	1,112	1,097	1,077	1,082	1,041	1,009	1,005
Carroll County	Carroll Hospital Center	218	213	195	189	158	151	147	140	143	146
Harford County	Univ. of MD Harford Memorial Hospital	104	105	101	97	89	89	84	84	85	86
	Univ. of MD Upper Chesapeake Medical Center	182	196	186	175	181	185	183	180	170	171
	<i>Total: Harford County</i>	286	301	287	272	270	274	267	264	255	257
Howard County	Howard County General Hospital	209	227	238	249	249	253	259	266	264	267
CENTRAL MARYLAND TOTAL		6,647	6,715	6,639	6,455	6,461	6,420	6,257	6,133	5,992	5,980
Cecil County	Union Hospital of Cecil County	116	113	113	106	92	85	75	84	83	82
Dorchester County	Univ. of MD Shore Medical Center at Dorchester	54	54	53	52	46	41	39	47	46	48
Kent County	Univ. of MD Shore Medical Center at Chestertown	57	53	47	46	42	41	31	30	26	26
Somerset County	Edward W. McCready Memorial Hospital	9	8	8	9	5	4	4	4	3	3
Talbot County	Univ. of MD Shore Medical Center at Easton	120	125	120	116	112	112	112	112	112	120
Wicomico County	Peninsula Regional Medical Center	362	358	362	363	317	288	275	292	281	289
Worcester County	Atlantic General Hospital	53	55	53	53	48	45	48	48	45	45
EASTERN SHORE TOTAL		771	766	756	745	662	616	584	617	596	613
MARYLAND TOTAL		10,827	10,880	10,729	10,583	10,348	10,177	9,804	9,800	9,555	9,611

Source: Maryland Health Care Commission, ACHI, FY2009 - FY2018

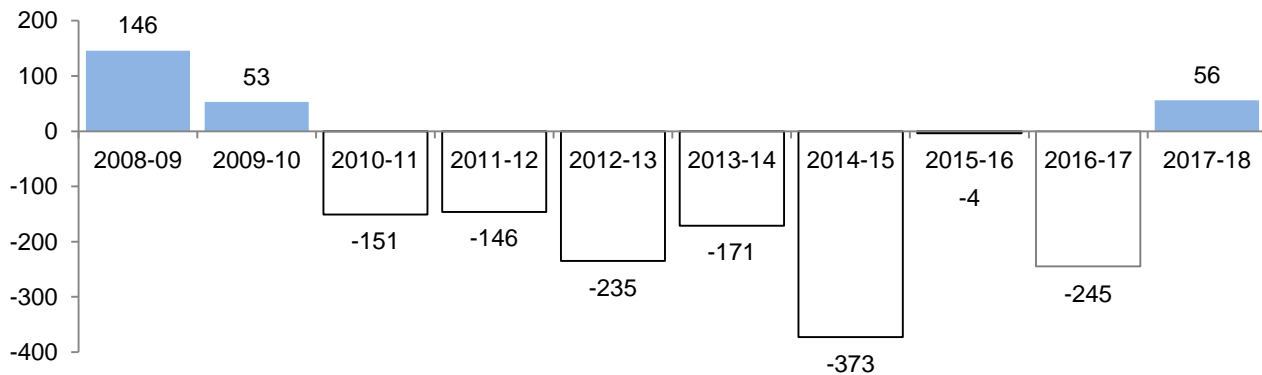
**Table 3. Percent Change in Total Licensed Acute Care Hospital Beds,
by Maryland Region: Fiscal Years 2009 - 2018**

Region	2009	2010	2011	2012	2013	2014	2015	2016	2017	2018	Average Annual Change 2009 - 2018
Western Maryland	3.2%	-0.6%	-1.4%	2.9%	-4.2%	-5.7%	-7.4%	-4.0%	2.2%	4.3%	-1.1%
Montgomery County	3.4%	1.8%	-1.5%	0.7%	-4.5%	-1.3%	-4.6%	9.9%	-6.9%	-0.6%	-0.4%
Southern Maryland	-0.5%	-2.5%	-2.8%	1.3%	-5.2%	-2.0%	-5.8%	-1.1%	-0.2%	3.0%	-1.6%
Central Maryland	1.1%	1.0%	-1.1%	2.8%	0.1%	-0.6%	-2.5%	-2.0%	-2.3%	-0.2%	-0.4%
Eastern Shore	0.9%	-0.6%	-1.3%	1.5%	-11.1%	-6.9%	-5.2%	5.7%	-3.4%	2.9%	-1.8%
Maryland Total	1.4%	0.5%	-1.4%	-1.4%	-2.2%	-1.7%	-3.7%	0.0%	-2.5%	0.6%	-1.1%

Source: Maryland Health Care Commission, ACHI, FY2009 - FY2018

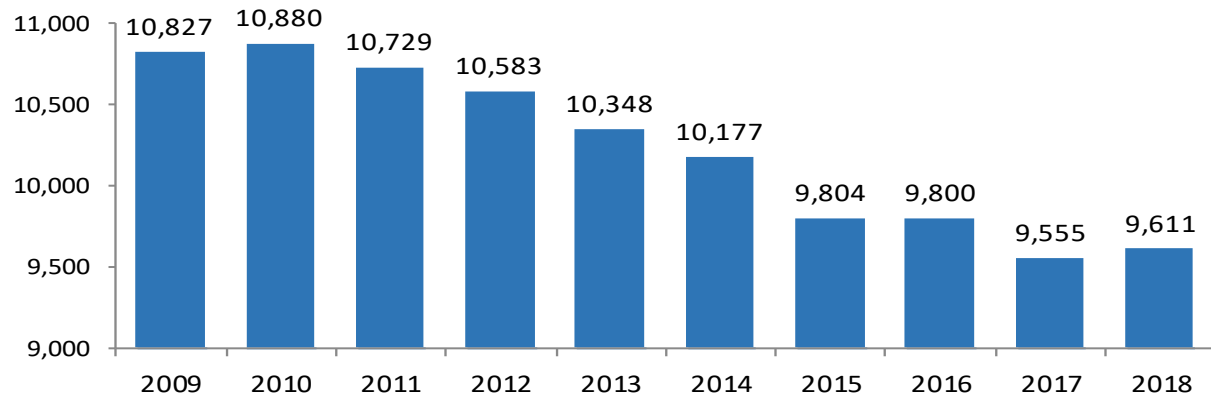
Chart 1 displays the annual net change in licensed acute care beds over the last ten years, while Chart 2 shows the total number of licensed beds over the same period

**Chart 1. Year to Year Change in Total Licensed Acute Care
Beds: Maryland Hospitals, FY 2008 - 2018**



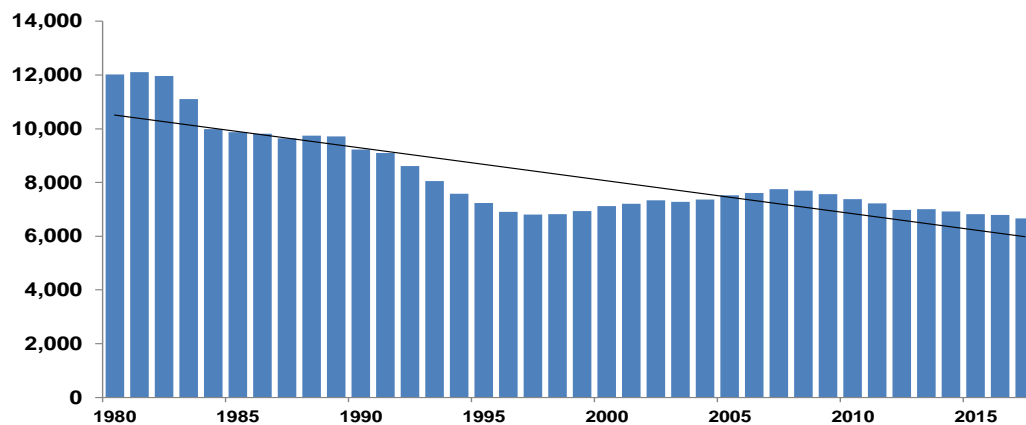
Source: Maryland Health Care Commission, ACHI, FY2008 - FY 2018

**Chart 2. Total Licensed Acute Care Beds:
Maryland Hospitals, FY 2009 - 2018**



Source: Maryland Health Care Commission, ACHI, FY2009 - FY2018

**Chart 3: Trend in Average Daily Acute Care Patient Census
Maryland General Hospitals, 1980-2017**



Source: Maryland Health Care Commission. Note: Data reported is based on the Hospital Discharge Abstract Data Base for calendar years 1980 - 2017 and reflects the average daily census for all services excluding newborn and rehabilitation services.

While the average daily census of acute care patients began to gradually trend upward in the late 1990's, hospital utilization in Maryland never returned to historic peaks. During calendar year 2009 average daily census saw the first decline since dynamic hospital bed licensure went into effect in 2001. The average daily census declined again in calendar year 2010. Chart 3 shows the trend of declining acute care census from the early 1980s through the late 1990s, the extent of the rebound in census that occurred in the next ten years and the recent return to gradual decline after 2008. There is a slight increase (0.6%) in the total number of licensed hospital beds in FY2018.

Table 4 profiles the FY 2017 - 2018 change in total licensed acute care hospital beds from a regional perspective. The State as a whole experienced an increase of 56 beds, growth of 0.6%. Two (2) Maryland health planning regions saw licensed bed capacity decline in FY 2018, with Central Maryland experiencing the largest decline (0.6%). Western Maryland saw an increase of 4.3% in licensed acute care beds. Statewide, 23 hospitals saw an increase in bed capacity, 18 hospitals saw a decline in bed capacity, and six hospitals had no change in bed capacity from FY 2017 to FY 2018.

**Table 4. Change in Number of Total Licensed Acute Care Beds by Region:
Maryland Hospitals, FY 2017 - FY 2018**

Region	Total Number of Hospitals	Net Change in Number of Total Licensed Beds	Percent Change	Number of Hospitals with an Increase in Beds	Number of Hospitals with a Decrease in Beds	Number of Hospitals with No Change in Hospital Beds
Western Maryland	4	30	4.3%	3	0	1
Montgomery County	6	(8)	-0.6%	3	2	1
Southern Maryland	8	29	3.0%	3	4	1
Central Maryland	22	(12)	-0.2%	11	11	0
Eastern Shore	7	17	2.9%	3	1	3
MARYLAND TOTAL	47	56	0.6%	23	18	6

Source: Maryland Health Care Commission, ACHI FY2017 - FY2018

Tables 5 and 6 profile the change in the inventory of licensed acute care hospital beds for the past ten fiscal years for the four acute care bed service categories. As can be seen, there have been no dramatic changes in the allocation of acute care beds by Maryland's hospitals over this period, with MSGA beds accounting for an average of 80% to 82% of total acute care beds, obstetric beds comprising an average of 8% to 9%, acute psychiatric beds, on average, 7% to 8% of total, and pediatric beds, 4% of total. Licensed bed capacity allocated to psychiatric services is the only service category of the four that saw consistent growth over this ten year period.

**Table 5. Allocation of Licensed Acute Care Beds by Service
Maryland Hospitals, FY2009 - FY2018**

Service Category	2009	2010	2011	2012	2013	2014	2015	2016	2017	2018
MSGA	8,827	8,890	8,738	8,590	8,352	8,198	7,835	7,850	7,595	7,653
Obstetric	854	851	848	851	851	827	823	832	820	826
Pediatric	459	451	452	447	442	438	422	396	400	385
Acute Psychiatric	687	688	691	695	703	714	724	722	740	747
TOTAL	10,827	10,880	10,729	10,583	10,348	10,177	9,804	9,800	9,555	9,611

Source: Maryland Health Care Commission, ACHI FY2009 - FY2018

**Table 6. Allocation of Licensed Acute Care Beds by Service (Percentage),
Maryland Hospitals, FY 2009 - FY 2018**

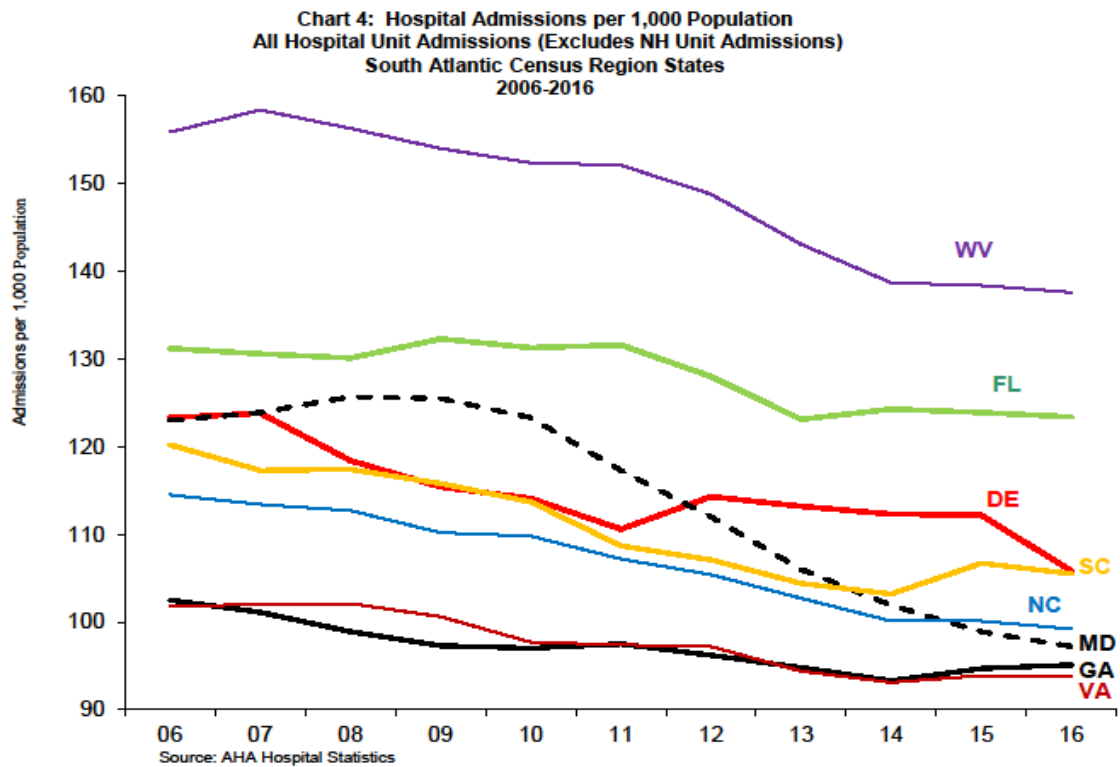
Service Category	2009	2010	2011	2012	2013	2014	2015	2016	2017	2018
MSGA	81.5%	81.7%	81.4%	81.2%	80.7%	80.6%	79.9%	80.1%	79.5%	79.6%
Obstetric	8.0%	7.8%	7.9%	8.0%	8.2%	8.1%	8.4%	8.5%	8.6%	8.6%
Pediatric	4.2%	4.1%	4.2%	4.2%	4.3%	4.3%	4.3%	4.0%	4.2%	4.0%
Acute Psychiatric	6.3%	6.3%	6.4%	6.6%	6.8%	7.0%	7.4%	7.4%	7.7%	7.8%
TOTAL	100%	100%	100%	100%	100%	100%	100%	100%	100%	100%

Source: Maryland Health Care Commission, ACHI FY2009 - FY2018

Demand for Hospital Beds in Maryland Compared with Regional and National Trends

The following graphs profile information from *Hospital Statistics*, an annual publication of the American Hospital Association (AHA). They reflect this publication's reported acute care hospital use rates and average hospital stay statistics for Maryland and contrasts the demand reported for other Southeastern States and the U.S. experience.

The first two graphs compare hospital admissions per thousand population and average length of hospital stay in Maryland with the experience of the seven other states in the South Atlantic Census Region. This data is not age-adjusted. The relative age of the population in these states is an important factor in interpreting these hospital use rates. Florida and West Virginia are the oldest states in this region. The U.S. Census Bureau estimates that 19.9% and 18.7%, respectively, of the total 2016 estimated population of these two states was aged 65 or older. Delaware, South Carolina, and North Carolina are the next oldest, with 17.5%, 16.7%, and 15.5% of total population, respectively, aged 65+. Virginia and Maryland have the same estimated proportion of elderly in their total population, 14.6%. Georgia is the youngest state in this region at 13.1% of its estimated population estimated to be 65 and older.



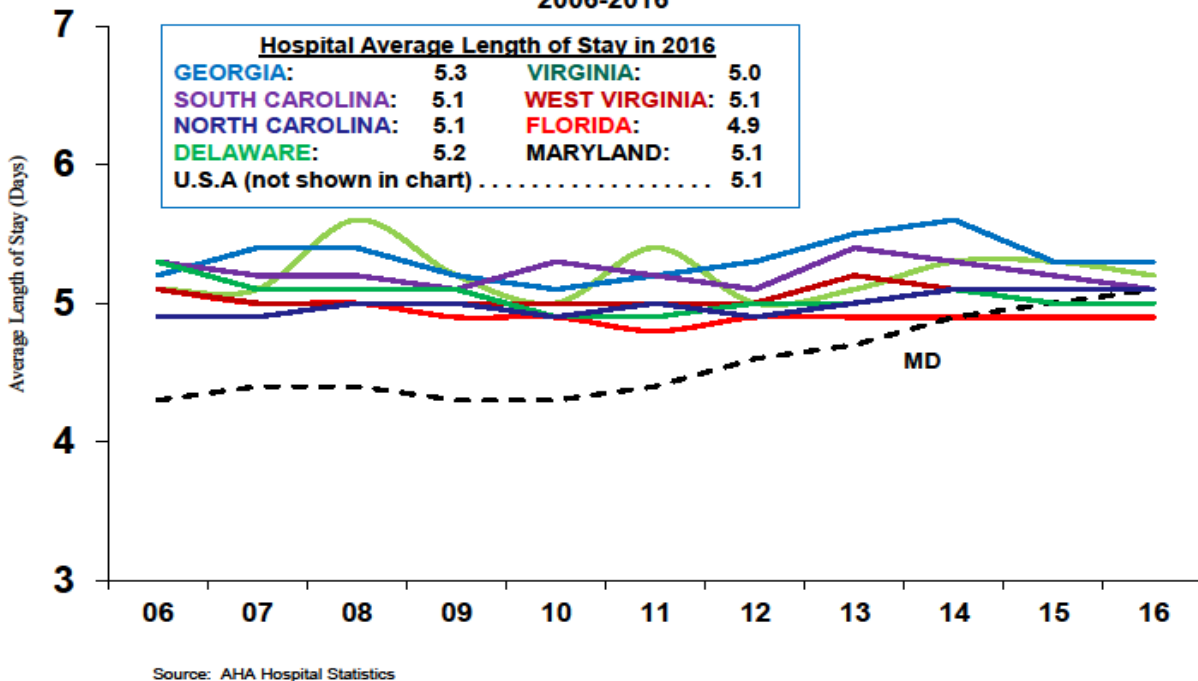
Source: AHA Hospital Statistics(2012 – 2018 Editions)

Table 7.
Proportion of Total Population Aged 65 and Older
South Atlantic Census Region States, 2016 Estimate

State	Proportion of Population Aged 65 and Older
Delaware	17.5%
Florida	19.9%
Georgia	13.1%
Maryland	14.6%
North Carolina	15.5%
South Carolina	16.7%
Virginia	14.6%
West Virginia	18.7%
United States	15.2%

Source: U.S. Census Bureau, 2016 Population Estimates

Chart 5: Hospital Average Length of Stay
All Hospital Unit Admissions (Excludes NH Unit Admissions)
South Atlantic Census Region States
2006-2016



As will be noted, from a regional perspective, Maryland's admissions rate has been lower than that of the states in the South Atlantic region with a higher percentage of population aged 65 and older, Florida and West Virginia, as would be expected. Maryland's admissions rate was substantially higher, for the most part, in the early years of this time period compared with that of the Carolinas or Delaware, states with populations only slightly older than that of Maryland, and was much higher than Virginia's hospital use rate, a state with a very similarly sized elderly population. However, beginning in 2010, Maryland's admissions rate has declined more steeply than that of any other state in this region.

Ten years ago, Maryland was an outlier in the region with respect to average length of hospital stay (ALOS), with a distinctly shorter ALOS when compared with these other states, as shown in Chart 5. The ALOS gap has closed however, indicating that Maryland's decline in admissions was largely due to reductions in short-stay hospitalizations.

The following graphs, Chart 6 and Chart 7, taken from the same data source, provide a longer-term perspective on Maryland and the Nation. Maryland had an enviable record with respect to admissions rate and average length of hospital stay in the 1990s but this changed during the previous decade. Hospital use rates in Maryland peaked in the 2008-09 period, at approximately 8-9% higher than the overall national use rate but have steeply declined in the following years, dropping below the overall U.S. use rate in 2013 and continuing to widen the gap through 2016.

Maryland was consistently discharging hospital patients more quickly, on average, than the U.S. as a whole until the latter part of the last decade. (See Chart 7.) Similar to the regional trend shown in Chart 4 there has been a narrowing of the gap between Maryland's ALOS and that of all U.S. hospitals in the current decade, as Maryland hospitals have reduced short stays. There was no difference in the ALOS of Maryland general hospitals and that of all U.S. hospitals in 2016, according to AHA. In many cases, very short stays have been replaced with observation stays, classified as outpatient episodes of care and not recorded as hospital admissions.

Chart 6: Hospital Admissions per 1,000 Population
All Hospital Unit Admissions (Excludes NH Unit Admissions)
U.S. and Maryland
1996-2016

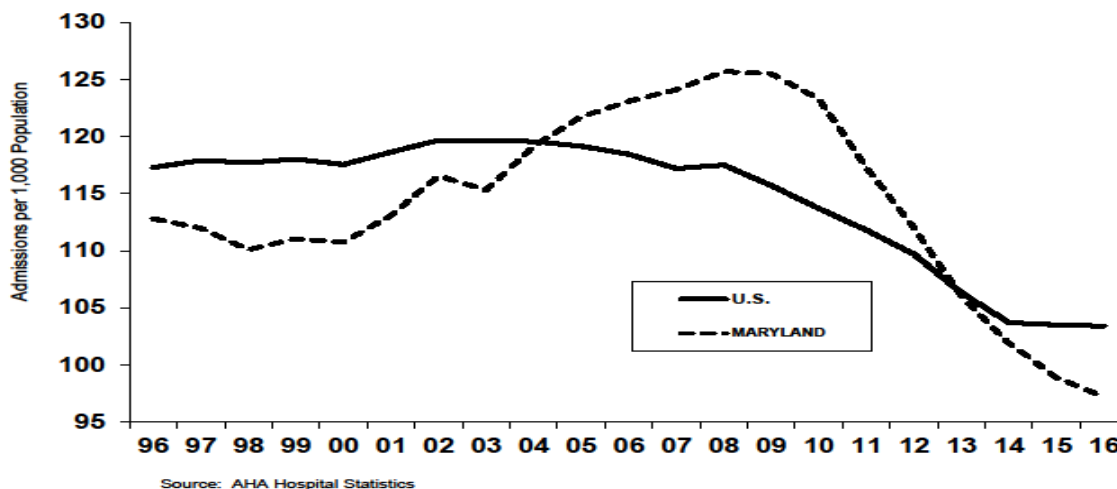
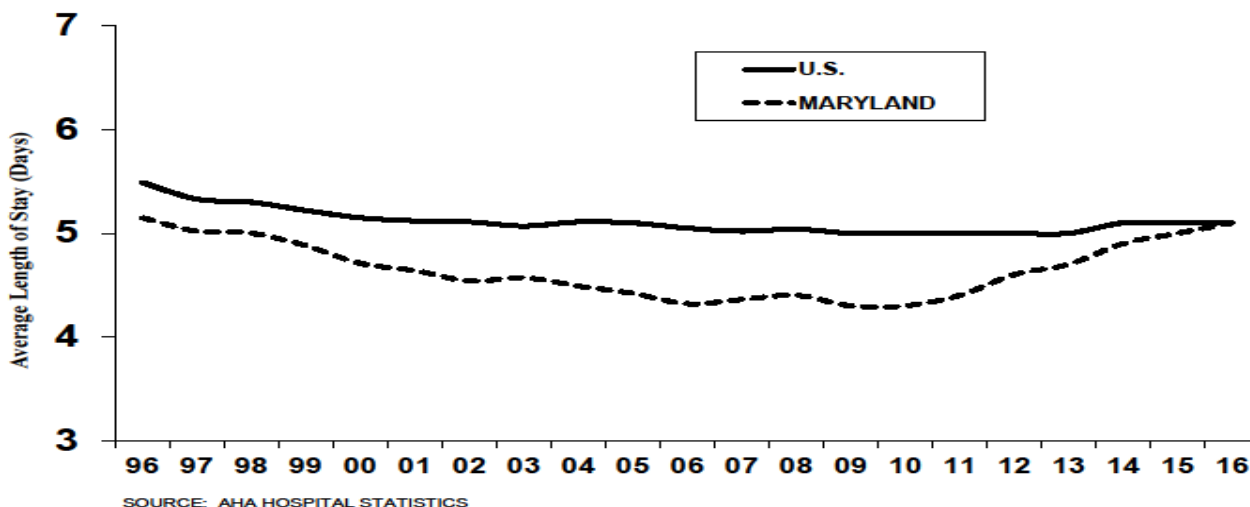


Chart 7: Hospital Average Length of Stay
All Hospital Unit Admissions (Excludes NH Unit Admissions)
U.S. and Maryland
1996-2016



Regarding the data used in Charts 4 through 7, the AHA conducts an annual survey of all hospitals, both AHA-registered and nonregistered, in the U.S. and its associated areas. AHA reports, overall, the average response rate over the past five years has been approximately 83 percent.

Critical Care Beds

Table 8 shows the FY 2018 inventory of critical care beds, which in the case of adult critical care beds, are a subset of MSGA beds. Adult critical care beds comprise 15.8% of the state's licensed MSGA bed inventory, ranging from 8.2% in Western Maryland to 17.4% in Central Maryland. Pediatric critical care beds comprise 16.9% of the state's licensed pediatric bed inventory.

**Table 8. Critical Care Bed Inventory:
Maryland Hospitals, FY 2018**

Jurisdiction/Region	Hospital	Critical Care Beds	
		Adult	Pediatric
Allegany County Frederick County Garrett County Washington County	Western Maryland Regional Medical Center	15	
	Frederick Memorial Hospital	18	
	Garrett County Memorial Hospital	2	
	Meritus Medical Center	14	
WESTERN MARYLAND TOTAL		49	0
Montgomery County	Adventist HealthCare Shady Grove Medical Center	28	
	Adventist HealthCare Washington Adventist Hospital	26	
	Holy Cross Germantown Hospital	8	
	Holy Cross Hospital	46	
	MedStar Montgomery General Hospital	12	
	Suburban Hospital	24	
MONTGOMERY COUNTY TOTAL		144	0
Calvert County Charles County Prince George's County St. Mary's County	CalvertHealth Medical Center	4	
	University of Maryland Charles Regional Medical Center	10	
	Doctors Community Hospital	23	
	Fort Washington Medical Center	4	
	MedStar Southern Maryland Hospital	18	
	University of Maryland Laurel Regional Hospital	10	
	University of Maryland Prince George's Hospital Center	34	
	MedStar St. Mary's Hospital	12	
SOUTHERN MARYLAND TOTAL		115	0
Anne Arundel County Baltimore City Baltimore County Carroll County Harford County Howard County	Anne Arundel Medical Center	20	
	University of Maryland Baltimore Washington Medical Center	33	
	Bon Secours Hospital	8	
	Johns Hopkins Bayview Medical Center	52	
	MedStar Good Samaritan Hospital	17	
	MedStar Harbor Hospital	14	
	MedStar Union Memorial Hospital	50	
	Mercy Medical Center	24	
	Sinai Hospital at Baltimore	35	6
	St. Agnes Hospital	28	
	The Johns Hopkins Hospital	110	40
	University of Maryland Medical Center	276	19
	University of Maryland Medical Center Midtown Campus	13	
	University of Maryland Rehabilitation and Orthopaedics Institute	0	
	Greater Baltimore Medical Center	24	
	MedStar Franklin Square Hospital	26	
	Northwest Hospital Center	16	
	University of Maryland St. Joseph Medical Center	37	
	Carroll Hospital Center	12	
	University of Maryland Harford Memorial Hospital	6	
	University of Maryland Upper Chesapeake Medical Center	13	
	Howard County General Hospital	16	
CENTRAL MARYLAND TOTAL		830	65
Cecil County Dorchester County Kent County Somerset County Talbot County Wicomico County Worcester County	Union Hospital of Cecil County	3	
	University of Maryland Shore Medical Center at Dorchester	6	
	University of Maryland Shore Medical Center at Chestertown	6	
	Edward W. McCready Memorial Hospital	0	
	University of Maryland Shore Medical Center at Easton	10	
	Peninsula Regional Medical Center	42	
	Atlantic General Hospital	6	
EASTERN SHORE TOTAL		73	0
MARYLAND STATE TOTAL		1,211	65

Source: Maryland Health Care Commission: Critical Care Bed Capacity FY2018. Note: Adult critical care beds include all medical surgical intensive care and coronary care beds and excludes definitive observation/stepdown beds, pediatric intensive care beds and NICU bassinets. Adult critical care beds are part of the larger MSGA inventory.

*Johns Hopkins Bayview includes 10 Burn Critical Care Beds, and University of Maryland Medical Center includes 115 Shock Trauma Beds.

Monitored Beds

Monitored beds are beds which the hospital identified as equipped with cardiac monitoring. “Monitored” means that cardiac monitoring is available for identified hospital beds. Previously this meant a bed was hard-wired for cardiac monitoring. With the institution of remote centralized monitoring, a wireless transmitting system that can be viewed on a central surveillance system, cardiac monitoring is no longer dependent on a stationary bed being hard wired. Wireless monitoring can detect early warning signs and changes in a patient’s condition through the continuous automated collection of key vital signs.

Table 9 identifies the proportion of total licensed acute care beds, by hospital, which the hospital identified as equipped with cardiac monitoring.

From FY 2008 to FY 2012, the number of monitored beds reported by Maryland’s acute care general hospitals increased 32%, this compares to the 18%, increase from FY 2008 to FY 2011, in part due to the increase of monitoring capability with the introduction of wireless centralized systems. While monitored beds as a percentage of all licensed beds, from FY 2008 to FY 2011 increased an average of 5.6% per year, in FY 2013, the increase in monitored beds was 12%. The number of monitored beds reported by Maryland’s acute care hospitals increased from 55% of total licensed beds in FY 2013 to 65.6% in FY2017 and 66.9% in FY2018.

In addition to collecting monitored bed inventories for licensed acute care beds, MHCC also compiles that data for bassinets for hospitals that provide obstetrical and newborn nursery services. Thirty-two hospitals provide obstetric and perinatal services and report a combined total of 1,380 newborn nursery bassinets; of these bassinets, 527 (38.2%) have monitoring capability.

**Table 9. Licensed Acute Care Beds with Monitoring Capability:
Maryland Hospitals, FY2018**

Jurisdiction/Region	Hospital Name	FY 2018 Licensed Beds	Monitorable Beds	Monitorable as % of Licensed Beds
Allegany County	Western Maryland Regional Medical Center	200	90	45.0%
Frederick County	Frederick Memorial Hospital	257	257	100.0%
Garrett County	Garrett County Memorial Hospital	27	27	100.0%
Washington County	Meritus Medical Center	237	215	90.7%
	WESTERN MARYLAND TOTAL	721	589	81.7%
Montgomery County	Adventist HealthCare Shady Grove Medical Center	266	185	69.5%
	Adventist HealthCare Washington Adventist Hospital	204	145	71.1%
	Holy Cross Germantown Hospital	72	58	80.6%
	Holy Cross Hospital	403	209	51.9%
	MedStar Montgomery General Hospital	115	46	40.0%
	Suburban Hospital	230	119	51.7%
	MONTGOMERY COUNTY TOTAL	1,290	762	59.1%
Calvert County	CalvertHealth Medical Center	74	41	55.4%
Charles County	University of Maryland Charles Regional Medical Center	109	97	89.0%
Prince George's County	Doctors Community Hospital	210	89	42.4%
	Fort Washington Medical Center	32	28	87.5%
	MedStar Southern Maryland Hospital Center	182	153	84.1%
	University of Maryland Laurel Regional Hospital	61	37	60.7%
	University of Maryland Prince George's Hospital Center	230	118	51.3%
St. Mary's County	MedStar St. Mary's Hospital	109	74	67.9%
	SOUTHERN MARYLAND TOTAL	1,007	637	63.3%
Anne Arundel County	Anne Arundel Medical Center	385	325	84.4%
	University of Maryland Baltimore Washington Medical Center	288	158	54.9%
Baltimore City	Bon Secours Hospital	69	50	72.5%
	Johns Hopkins Bayview Medical Center	342	342	100.0%
	MedStar Good Samaritan Hospital of Maryland	137	73	53.3%
	MedStar Harbor Hospital	139	97	69.8%
	MedStar Union Memorial Hospital	192	127	66.1%
	Mercy Medical Center	178	113	63.5%
	Sinai Hospital of Baltimore	370	196	53.0%
	St. Agnes Hospital	254	159	62.6%
	The Johns Hopkins Hospital	1,091	558	51.1%
	University of Maryland Medical Center	767	767	100.0%
	University of Maryland Medical Center Midtown Campus	90	81	90.0%
	University of Maryland Rehabilitation & Orthopaedic Institute	3	3	100.0%
Baltimore County	Greater Baltimore Medical Center	231	82	35.5%
	MedStar Franklin Square Hospital	348	162	46.6%
	Northwest Hospital Center	202	67	33.2%
	University of Maryland St. Joseph Medical Center	224	188	83.9%
Carroll County	Carroll Hospital Center	146	62	42.5%
Harford County	University of Maryland Harford Memorial Hospital	86	68	79.1%
	University of Maryland Upper Chesapeake Medical Center	171	150	87.7%
Howard County	Howard County General Hospital	267	135	50.6%
	CENTRAL MARYLAND TOTAL	5,980	3,963	66.3%
Cecil County	Union Hospital of Cecil County	82	82	100.0%
Dorchester County	University of Maryland Shore Medical Center at Dorchester	48	16	33.3%
Kent County	University of Maryland Shore Medical Center at Chestertown	26	26	100.0%
Somerset County	Edward W. McCready Memorial Hospital	3	3	100.0%
Talbot County	University of Maryland Shore Medical Center at Easton	120	48	40.0%
Wicomico County	Peninsula Regional Medical Center	289	269	93.1%
Worcester County	Atlantic General Hospital	45	32	71.1%
	EASTERN SHORE TOTAL	613	476	77.7%
STATE TOTAL		9,611	6,427	66.9%

Source: MHCC Supplemental Survey: Inpatient Monitoring Capacity, FY2018. Data are self reported. Capacity for inpatient monitoring means cardiac monitoring is available for the reported numbers of beds. Note: The calculated percentage reflects total licensed beds and does not necessarily reflect the actual complement of beds set up and staffed by the hospital.

Hospital System Affiliation

Table 10 profiles the trend in licensed acute care beds for hospitals that are members of a multihospital system. Sixty percent of Maryland general hospitals are part of the state's six multihospital systems. In 2017 the University of Maryland Medical System (UMMS) acquired Dimensions Health System, representing two acute care general hospitals, Laurel Regional Hospital and Prince George's Hospital Center. Dimensions Health System was renamed to University of Maryland Capital Regional Health and the two member were renamed University of Maryland Laurel Regional Medical Center and University of Maryland Prince George's Medical Center, joined the University of Maryland Medical System (UMMS).

Chart 8 shows the number of Maryland hospitals and beds that are part of a multihospital system and the number of hospitals and beds that are not part of a multihospital system in Maryland. Although there was little change from 2001 through 2007, the following seven (7) years saw an increase in the number of hospitals joining multihospital systems. FY2015 through FY2017 saw no additional hospitals joining a multi-hospital system. Although it did not affect the total number of hospitals that are part of a Hospital System, in FY2018, The University of Maryland Dimensions Healthcare System, which included Laurel Regional Hospital and Prince George's Hospital Center, was acquired by UMMS. Dimensions Healthcare System was renamed University of Maryland Capital Region Health System.

Table 11 compares the growth and annual change in the number of hospitals and beds that are part of Maryland multi-hospital systems with hospitals that are independent reflecting the annual percent change in the distribution of beds and the change during the last eight years (FY 2011 to FY 2018).

Table 10. Trend in Hospitals and Licensed Acute Care Bed Capacity by Hospital System Affiliation
Maryland Hospitals, FY 2009 - 2018

System Name	System Hospitals / [Year of System Affiliation]	2009	2010	2011	2012	2013	2014	2015	2016	2017	2018
University of Maryland Medical System	University of Maryland Medical Center	705	731	757	779	800	816	801	772	750	767
	UM Baltimore Washington Medical Center	298	311	321	308	307	319	310	303	293	288
	UM Medical Center Midtown Campus	191	180	167	164	155	128	110	107	87	90
	UM Rehabilitation & Orthopaedic Institute	11	10	10	9	9	10	10	7	4	3
	UM St. Joseph Medical Center [2013]	354	345	300	263	247	232	238	247	232	224
	UM Charles Regional Medical Center [2011]	129	120	120	124	110	121	115	110	89	109
	UM Shore Medical Center at Easton	120	125	120	116	112	112	112	112	112	120
	UM Shore Medical Center at Dorchester	54	54	53	52	46	41	39	47	46	48
	UM Shore Medical Center at Chestertown	57	53	47	46	42	41	31	30	26	26
	UM Upper Chesapeake Health System [2014]	182	196	186	175	181	185	183	180	170	171
	UM Harford Memorial Hospital	104	105	101	97	89	89	84	84	85	86
	UM Capital Region Health [2017]	97	95	87	83	77	78	74	60	63	61
	UM Prince George's Hospital Center	246	254	244	242	224	214	215	237	233	230
	System Total	1,436	1,464	1,595	1,598	1,581	1,820	2,033	1,999	2,190	2,223
The Johns Hopkins Health System Corporation [1]	The Johns Hopkins Hospital	979	990	994	992	1,000	1,060	1,082	1,129	1,131	1,091
	Johns Hopkins Bayview Medical Center	345	346	348	348	355	355	337	341	330	342
	Howard County General Hospital	209	227	238	249	249	253	259	266	264	267
	Suburban Hospital [2010]	238	239	222	233	229	236	220	236	222	230
	System Total	1,533	1,802	1,802	1,822	1,833	1,904	1,898	1,972	1,947	1,930
MedStar Health [1]	MedStar Franklin Square Medical Center	380	371	376	347	355	347	354	364	353	348
	MedStar Good Samaritan Hospital	245	236	235	222	224	206	177	165	155	137
	MedStar Harbor Hospital	215	221	193	179	160	136	120	113	107	139
	MedStar Montgomery Medical Center	165	170	159	158	138	132	120	122	114	115
	MedStar Southern Maryland Hospital Center [2013]	255	246	235	238	239	227	207	208	192	182
	MedStar St. Mary's Hospital [2010]	108	103	96	90	90	89	82	91	103	109
	MedStar Union Memorial Hospital	292	295	271	231	236	221	205	211	209	192
	System Total	1,297	1,396	1,330	1,227	1,442	1,358	1,265	1,274	1,233	1,222
LifeBridge Health	Carroll Hospital Center [2015]	218	213	195	189	158	151	147	140	143	146
	Sinai Hospital of Baltimore	415	413	424	416	426	421	407	392	367	370
	Northwest Hospital Center	218	221	215	221	225	243	245	199	192	202
	System Total	633	634	639	637	651	664	799	731	702	718
Trinity Health [1]	Holy Cross Germantown Hospital [Opened 2014]	-	-	-	-	-	-	-	93	93	72
	Holy Cross Hospital of Silver Spring	408	404	402	409	396	397	391	423	409	403
	System Total	408	404	402	409	396	397	391	516	502	475
Adventist HealthCare	Adventist HealthCare Shady Grove Medical Center	293	320	336	339	331	312	305	290	256	266
	Adventist HealthCare Washington Adventist Hospital	292	288	281	271	252	252	232	230	204	204
	System Total	585	608	617	610	583	564	537	520	460	470
Ascension [1]	St. Agnes Hospital	307	318	314	296	287	276	264	251	263	254
	System Total	307	318	314	296	287	276	264	251	263	254
Bon Secours Health System [1]	Bon Secours Hospital	125	126	141	127	115	107	88	72	72	69
	System Total	125	126	141	127	115	107	88	72	72	69
Total: System Hospitals		6,324	6,752	6,840	6,726	6,888	7,090	7,275	7,335	7,369	7,361
Independent Hospitals		2009	2010	2011	2012	2013	2014	2015	2016	2017	2018
Anne Arundel Medical Center		301	316	324	336	380	385	384	375	370	385
Atlantic General Hospital		53	55	53	53	48	45	48	48	45	45
CalvertHealth Medical Center		106	98	98	95	95	92	85	77	76	74
Doctors Community Hospital		195	190	195	219	207	198	182	163	190	210
Edward W. McCready Memorial Hospital		9	8	8	9	5	4	4	4	3	3
Fort Washington Medical Center		43	43	42	41	31	33	31	34	32	32
Frederick Memorial Hospital		269	274	276	309	298	297	258	233	239	257
Garrett County Memorial Hospital		36	33	31	30	29	26	23	25	27	27
Greater Baltimore Medical Center		310	300	285	281	270	255	245	231	232	231
Mercy Medical Center		243	244	244	226	233	225	207	184	183	178
Meritus Medical Center		258	260	258	252	245	237	231	223	227	237
Peninsula Regional Medical Center		362	358	362	363	317	288	275	292	281	289
Union Hospital		116	113	113	106	92	85	75	84	83	82
Western Maryland Regional Medical Center [2]		271	262	252	250	234	200	192	195	198	200
Total: Independent Hospitals		2,301	2,554	2,541	2,570	2,484	2,370	2,240	2,168	2,186	2,250
Maryland Total		10,827	10,880	10,729	10,583	10,348	10,177	9,804	9,800	9,555	9,611

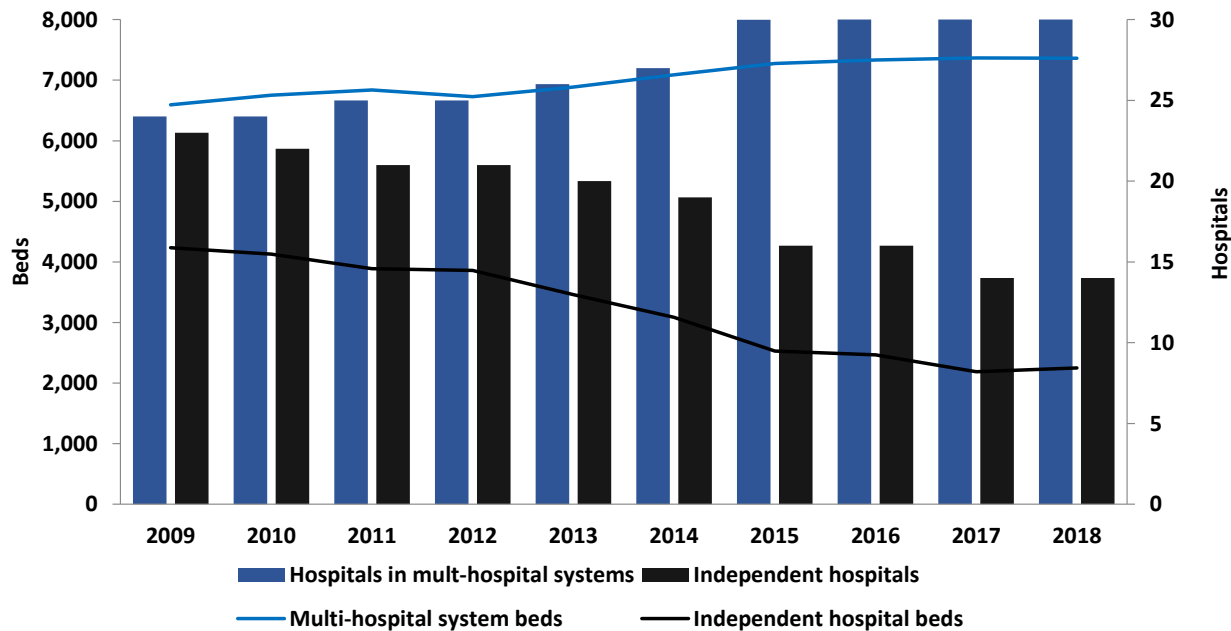
Source: Maryland Health Care Commission, ACHI FY2009 - FY2018. Systems are multi-hospital systems with more than one hospital in Maryland.

NOTES: Years in *italics* are the year in which the hospital became part of the hospital system. Shaded bed numbers in *italics* are for years in which the hospital was not affiliated with the system.

[1] These systems include non-Maryland hospitals. Only Maryland hospitals are shown in this table.

[2] Prior to 2010, this hospital was a two-hospital system.

Chart 8. Comparison of Multihospital Systems and Non-Hospital System Hospitals, Maryland FY2009 - FY2018



**Table 11. Multi-hospital Systems and Independent Hospitals and Beds by System Status
Maryland FY2011 - FY2018**

System Status	2011	2012	Annual Change	2013	Annual Change	2014	Annual Change	2015	Annual Change	2016	Annual Change	2017	Annual Change	2018	Annual Change	Change 2011-2018
Multi-hospital Systems	10	10		10		10		9		9		8		8		-20.0%
Multihospital System Hospitals	25	25		26		27		30		31		33		33		32.0%
Beds	6,840	6,726	-1.7%	6,888	2.4%	7,090	2.9%	7,275	2.8%	7,335	0.8%	7,369	0.5%	7,361	-0.1%	7.6%
Percent of Maryland Hospitals	53%	53%		57%		59%		65%		66%		70%		70%		
Percent of Beds	64%	64%		67%		70%		74%		75%		77%		77%		
Independent Hospitals	21	21		20		19		16		16		14		14		-33.3%
Beds	3,889	3,857	-0.8%	3,460	-10.3%	3,087	-10.8%	2,529	-18.1%	2,465	-2.5%	2,186	-11.3%	2,250	2.9%	-42.1%
Percent of Maryland Hospitals	47%	47%		43%		41%		35%		34%		30%		30%		
Percent of Beds	36%	36%		33%		30%		26%		25%		23%		23%		
Total Acute General Hospital	46	46		46		46		46		47		47		47		2.2%
Total Beds	10,729	10,583	-1.4%	10,348	-2.2%	10,177	-1.7%	9,804	-3.7%	9,800	0.0%	9,555	-2.5%	9,611	0.6%	-10.4%

Source: Maryland Health Care Commission, ACHI FY2011 - FY2018

Total Available Acute Care Bed Capacity

The Commission surveys general hospitals for the total number of acute care beds they could physically accommodate, if necessary. Available acute care bed capacity is defined as the total number of acute inpatient beds that are available for use, or that could be physically set up in space appropriate for licensed acute inpatient care, as admissions might warrant. It is a physical count of beds based on the available patient rooms with headwalls, measuring the maximum operating capacity under normal, non-emergency circumstances, rather than a measure of staffing capacity.

The survey shows that 42 general hospitals in Maryland with 6,735 licensed acute care beds report the availability of physical bed capacity that exceeds their licensed capacity. These 42 hospitals, in the aggregate, report a physical capacity of 8,902 beds. This excess physical bed capacity (2,167 beds) would potentially be available to accommodate short term growth in demand and, if necessary, major emergencies and disasters, so long as staffing resources could be secured. Central Maryland has the greatest excess, with reported physical bed capacity exceeding licensed bed capacity of 846 beds, followed by Southern Maryland with 468 more physical beds than licensed beds.

Five hospitals report that their physical capacity to set up acute care beds, as of June, 2017 was less than their licensed bed capacity. These hospitals have a combined total of 2,876 licensed acute care beds and report that, in the aggregate, they only have physical capacity to set up 2,627 acute care beds, a difference of 249 beds.

Statewide, the Commission's June 1, 2017 survey identifies a net of 1,918 beds of physical bed capacity in excess of licensed bed capacity. The results of this survey are shown in Table 12.¹

¹ The data are self-reported and not verified by the Commission. To the extent possible, the Commission verifies hospital physical bed capacity on a case by case basis, when reviewing hospital expansion, renovation, and replacement projects submitted under the Certificate of Need Program.

**Table 12. Total Available Acute Care Bed Capacity Reported by Maryland Hospitals,
June 1, 2017**

Hospital Name	Licensed Beds FY 2018	Total Available Physical Capacity	Difference
Adventist HealthCare Shady Grove Medical Center	266	326	60
Adventist HealthCare Washington Adventist Hospital	204	304	100
Anne Arundel Medical Center	385	396	11
Atlantic General Hospital	45	62	17
Bon Secours Hospital	69	152	83
CalvertHealth Medical Center	74	126	52
Carroll Hospital Center	146	197	51
Doctors Community Hospital, Inc.	210	218	8
Edward W. McCready Memorial Hospital	3	26	23
Fort Washington Medical Center	32	37	5
Frederick Memorial Hospital	257	315	58
Garrett County Memorial Hospital	27	45	18
Greater Baltimore Medical Center, Inc.	231	342	111
Holy Cross Germantown Hospital*	72	93	21
Holy Cross Hospital	403	369	(34)
Howard County General Hospital	267	244	(23)
Johns Hopkins Bayview Medical Center	342	348	6
MedStar Franklin Square Hospital Center	348	342	(6)
MedStar Good Samaritan Hospital	137	309	172
MedStar Harbor Hospital	139	213	74
MedStar Montgomery Medical Center	115	187	72
MedStar Southern Maryland Hospital Center	182	339	157
MedStar St. Mary's Hospital	109	129	20
MedStar Union Memorial Hospital	192	279	87
Mercy Medical Center, Inc.	178	238	60
Meritus Medical Center	237	258	21
Northwest Hospital Center	202	224	22
Peninsula Regional Medical Center	289	380	91
Sinai Hospital of Baltimore	370	387	17
St. Agnes Hospital	254	367	113
Suburban Hospital	230	247	17
The Johns Hopkins Hospital	1,091	990	(101)
Union Hospital of Cecil County	82	96	14
University of Maryland Baltimore Washington Medical Center	288	327	39
University of Maryland Charles Regional Medical Center	109	144	35
University of Maryland Harford Memorial Hospital, Inc.	86	128	42
University of Maryland Laurel Regional Hospital	61	171	110
University of Maryland Medical Center	767	682	(85)
University of Maryland Medical Center Midtown Campus	90	158	68
University of Maryland Prince George's Hospital Center	230	311	81
University of Maryland Rehabilitation & Orthopaedic Institute	3	28	25
University of Maryland Shore Medical Center at Chestertown	26	40	14
University of Maryland Shore Medical Center at Dorchester	48	80	32
University of Maryland Shore Medical Center at Easton	120	150	30
University of Maryland St. Joseph Medical Center	224	281	57
University of Maryland Upper Chesapeake Medical Center	171	194	23
Western Maryland Regional Medical Center	200	250	50
MARYLAND TOTAL	9,611	11,529	1,918

Source: Maryland Health Care Commission, ACHI, Physical Bed Capacity, June 1, 2017

Note: Total available physical capacity is defined as the total number of acute inpatient beds that are available for use, including those that could be physically set up in space appropriate for licensed acute inpatient care as admissions might warrant. This should be a count of potentially available physical bed capacity rather than a measure of staffing capacity or a reflection of current use of patient care rooms. This is determined by the number of headw alls and/or gas lines that could be made available for inpatient use, without renovations. Rooms with two headw alls/gas lines should be counted as having capacity for two beds, and rooms with one headw all/gas line should be counted as having capacity for one bed, regardless of their current use. It does not include space currently used for non-acute or special hospital beds.

Observation Services

Observation services are those services furnished by the hospital on the hospital's premises, including use of a bed and periodic monitoring by the hospital's nursing or other staff, which are reasonable and necessary to determine the need for a possible admission to the hospital as an inpatient. Such services must be ordered and documented in writing as to time and method (FAX, telephone, etc.) by a medical staff practitioner. Observation services may or may not be provided in a distinct area of the hospital. Observation services include, but are not limited to; monitoring of vital life signs; collecting laboratory samples for diagnostic testing, use of specialized equipment assisting physicians during patient examination and treatment; changing of dressings and cleaning of wounds and incisions; observing and recording the emotional stability of patients; observing patients for reaction to drugs; administering specified medication; and infusing fluids intravenously.

Observation services are identified as a cost center by the Maryland Health Services Cost Review Commission and the standard unit of measure is hours. Extended recovery time for scheduled ambulatory surgery, emergency and/or labor and delivery observation are separate cost centers and are not included in observation services.

Beginning in 2012, hospitals were asked to report whether they use licensed beds, distinct unit (non-licensed) observation beds, or a combination of both licensed and distinct unit observation beds to provide services to observation patients. If distinct unit observation beds were used, the hospitals reported how many distinct unit observation beds were available. The hospitals were also asked if there were plans to expand the number of distinct unit observation beds and, if so, how many beds would be added. Finally, the hospitals were requested to report how many licensed beds were occupied by observation patients on an average day in the past twelve months.

As of June 1, 2017, nineteen (19) hospitals report the existence of distinct unit observation beds. However, only three (3) hospitals report using distinct unit observation beds exclusively. Twenty-seven (27) hospitals report using licensed beds only and eighteen (18) hospitals use a combination of distinct unit observation beds and licensed beds. The total number of distinct unit observation beds available for all Maryland hospitals is 331, a decrease of thirty-eight (38) distinct observation beds since June 1, 2016. No hospitals reported that they plan to expand the number of distinct unit observation beds within the next twelve months. Table 13 below shows the responses as reported by each hospital and Table 14 provides a summary of all Maryland general hospital observation services

Table 13. Maryland Acute Care General Hospital Observation (OBV) Services
June 1, 2017

Hospital Name	Distinct Unit Observation Beds Only	Licensed Beds Only	Combination of Distinct Unit Observation and Licensed Beds	Distinct Unit Observation Beds Available	Daily Census/ Observation Patients	Expansion of Distinct Unit Observation	Beds Planned for Expansion
Frederick Memorial Hospital		√			16.0		
Garrett County Hospital		√			6.0		
Meritus Medical Center			√	25	25.0		
Western Maryland Regional Medical Center	√			20	13.0		
Western Maryland Total	1	2	1	45	-	-	-
Adventist HealthCare Shady Grove Medical Center	√			18	15.0		
Adventist HealthCare Washington Adventist Hospital		√			13.7		
Holy Cross Germantown Hospital			√	8	6.5		
Holy Cross Hospital			√	19	17.0		
MedStar Montgomery Medical Center			√	15	10.1		
Suburban Hospital			√	20	17.0		
Montgomery County Total	1	1	4	80	-	-	-
CalvertHealth Medical Center		√			10.9		
Doctors Community Hospital			√	15	13.0		
Fort Washington Medical Center		√			5.0		
MedStar Southern Maryland Hospital Center		√			21.0		
MedStar St. Mary's Hospital		√			0.0		
University of Maryland Charles Regional Medical Center		√			7.7		
University of Maryland Laurel Regional Hospital		√			5.0		
University of Maryland Prince George's Hospital Center			√	16	12.6		
Southern Maryland Total	0	6	2	31	-	-	-
Anne Arundel Medical Center			√	17	35.0		
Bon Secours Hospital		√			4.5		
Carroll Hospital Center	√			22	10.0		
Greater Baltimore Medical Center		√			14.8		
Howard County General Hospital			√	13	14.6		
Johns Hopkins Bayview Medical Center			√	17	28.0		
MedStar Franklin Square Hospital			√	33	33.0		
MedStar Good Samaritan Hospital		√			12.0		
MedStar Harbor Hospital			√	11	8.2		
MedStar Union Memorial Hospital		√			11.0		
Mercy Medical Center		√			18.9		
Northwest Hospital Center		√			15.4		
Sinai Hospital of Baltimore		√			17.8		
St. Agnes Hospital		√			28.0		
The Johns Hopkins Hospital		√			6.2		
University of Maryland Baltimore Washington Medical Ctr.			√	24	20.0		
University of Maryland Harford Memorial Hospital		√			12.0		
University of Maryland Medical Center		√			17.0		
University of Maryland Medical Center Midtown Campus		√			8.0		
University of Maryland Rehabilitation & Orthopaedic Institute	-	-	-	-	-	-	-
University of Maryland St. Joseph Medical Center			√	16	18.0		
University of Maryland Upper Chesapeake Medical Center			√	10	31.0		
Central Maryland Total	1	12	8	163	-	-	-
Atlantic General Hospital		√			3.9		
Edward W. McCready Memorial Hospital		√			0.9		
Peninsula Regional Medical Center		√			15.0		
Union Hospital of Cecil County			√	12	5.7		
University of Maryland Shore Medical Center at Chestertown		√			1.8		
University of Maryland Shore Medical Center at Dorchester		√			1.0		
University of Maryland Shore Medical Center at Easton		√			2.0		
Eastern Shore Total	0	6	1	12	-	-	-
MARYLAND STATE TOTAL	3	27	16	331	-	-	-

Source: MHCC, ACHI, Supplemental Survey Observation Services, June 1, 2017. *James Lawrence Kernan Hospital does not provide emergency services and does not have observation services.

Table 14. Summary - Acute Care Hospital Observation Beds, June 1, 2017

Observation Services	Total Hospitals	Total Distinct Unit Observation Beds
Distinct Unit Observation Beds Only	3	60
Licensed Beds Only	27	–
Combined Distinct Unit/Licensed Observation Beds	16	271
Total Number of Distinct Unit Observation Beds, All Hospitals	19	331
Hospitals with Planned Expansion	0	
Number of Proposed Distinct Unit Observation Beds*	0	

Source: Maryland Health Care Commission, Survey Observation Beds, June 1, 2017

Emergency Department /Freestanding Medical Facility Treatment Capacity

Maryland has 46 emergency departments (EDs) located in acute general hospitals and three freestanding emergency treatment facilities operated by acute general hospitals licensed as “freestanding medical facilities.” University of Maryland Rehabilitation and Orthopaedic Institute in Baltimore City is the only acute care hospital in Maryland that does not operate an emergency department.

The freestanding medical facilities are: (1) University of Maryland Bowie Health Center located in Bowie, (Prince George’s County) and operated by University of Maryland Prince George’s Hospital Center, with 27 treatment spaces allocated to emergency care; (2) Adventist HealthCare Germantown Emergency Center with 21 treatment spaces, and operated by Adventist HealthCare Shady Grove Medical Center, and (3) Queens Anne’s Emergency Center, operated by University of Maryland Shore Medical Center at Easton with 14 treatment spaces. This facility is located near Grasonville in Queen Anne’s County

Table 15 shows the change in ED and FMF treatment capacity from a regional perspective. F o u r (4) emergency departments report an increase in treatment capacity in the past year. Six (6) EDs reported a decline in the number of treatment spaces from 2016 to 2017. Thirty-six (36) hospital emergency departments and the three freestanding medical facilities with emergency department capacity had no change in treatment spaces. Overall, Maryland emergency departments/facilities reported a decrease of seventeen (17) treatment spaces.

Table 15. Change in Emergency Department/ Freestanding Medical Facility Treatment Capacity: Maryland, 2016 - 2017

REGION	Total Number of Emergency Departments and FMFs	Net Change in Emergency Treatment Spaces	Percent Change in Capacity in Emergency Treatment Spaces	Emergency Departments or FMFs with an Increase in Capacity	Emergency Departments or FMFs with a Decrease in Capacity	Emergency Departments or FMFs with No Change in Capacity
Western Maryland	4	1	0.56%	1	0	3
Montgomery County*	7	(2)	-0.74%	0	1	6
Southern Maryland*	9	0	0.00%	0	0	9
Central Maryland**	21	(21)	-1.72%	2	4	15
Eastern Shore*	8	5	2.45%	1	1	6
State Total	49	(17)	-0.77%	4	6	39

Source: Maryland Health Care Commission. *Montgomery County includes Shady Grove Emergency Center at Germantown, Southern Maryland includes emergency treatment capacity at the University of Maryland Bowie Health Center. and the Eastern Shore includes the Queen Anne's Emergency Center.

** Johns Hopkins Hospital operates 2 distinct emergency centers, the main emergency department and a pediatric emergency department, the emergency departments are combined and reported as one in Table 15.

Note: University of Maryland Rehabilitation and Orthopaedics Institute does not provide emergency services.

Table 16 summarizes the Commission's supplemental survey of general hospital emergency department treatment capacity by hospital or freestanding medical facility and jurisdiction and region, identifying how Maryland's hospitals classify their ED or freestanding medical facility treatment spaces.

Table 17 shows the trend in emergency department/freestanding medical facility treatment capacity in Maryland from 2010 to 2017 by region, jurisdiction and hospital/facility. Chart 9 shows the change in the types of treatment spaces in Maryland.

**Table 16. Inventory of Emergency Department/ Freestanding Medical Facility Treatment Capacity:
Maryland: June 1, 2017**

Jurisdiction/Region	Hospital Name	Treatment Spaces			Non-Treatment Spaces*
		Total Treatment Spaces	Monitored Spaces	Non-Monitored Spaces	
Allegany County	Western Maryland Regional Medical Center	53	34	19	4
Frederick County	Frederick Memorial Hospital	57	56	1	1
Garrett County	Garrett County Hospital	13	12	1	2
Washington County	Meritus Medical Center	55	44	11	1
	WESTERN MARYLAND TOTAL	178	146	32	8
Montgomery County	Adventist HealthCare Germantown Emergency Center	21	9	12	2
	Adventist HealthCare Shady Grove Medical Center	64	31	33	0
	Adventist HealthCare Washington Adventist Hospital	26	15	11	0
	Holy Cross Germantown Hospital	14	11	3	2
	Holy Cross Hospital	64	34	30	8
	MedStar Montgomery General Hospital	39	30	9	3
	Suburban Hospital	41	29	12	3
	MONTGOMERY COUNTY TOTAL	269	159	110	18
Calvert County	CalvertHealth Medical Center	34	22	12	3
Charles County	University of Maryland Charles Regional Medical Center	38	25	13	3
Prince George's County	Doctors Community Hospital	55	36	19	3
	Fort Washington Medical Center	18	7	11	2
	University of Maryland Bowie Health Center	27	22	5	0
	University of Maryland Laurel Regional Hospital	31	31	0	0
	University of Maryland Prince George's Hospital Center	46	27	19	1
	MedStar Southern Maryland Hospital Center	39	29	10	4
St. Mary's County	MedStar St. Mary's Hospital	32	27	5	6
	SOUTHERN MARYLAND TOTAL	320	226	94	22
Anne Arundel County	Anne Arundel Medical Center	67	61	6	12
	University of Maryland Baltimore Washington Medical Ctr.	65	59	6	1
Baltimore City	Bon Secours Hospital	28	21	7	1
	Johns Hopkins Bayview Medical Center	50	29	21	18
	MedStar Good Samaritan Hospital	42	22	20	4
	MedStar Harbor Hospital	28	21	7	1
	MedStar Union Memorial Hospital	55	24	31	1
	Mercy Medical Center	51	36	15	3
	Sinai Hospital of Baltimore	79	69	10	3
	St. Agnes Hospital	69	53	16	0
	The Johns Hopkins Hospital - Main ED	73	73	0	0
	The Johns Hopkins Hospital - Pediatric ED	35	35	0	2
	University of Maryland Medical Center	92	73	19	4
	University of Maryland Medical Center Midtown Campus	29	21	8	2
Baltimore County	Greater Baltimore Medical Center	45	31	14	5
	MedStar Franklin Square Hospital	96	75	21	1
	Northwest Hospital Center	61	39	22	4
	University of Maryland St. Joseph Medical Center	38	37	1	5
Carroll County	Carroll Hospital Center	43	29	14	6
Harford County	University of Maryland Harford Memorial Hospital	28	23	5	0
	University of Maryland Upper Chesapeake Medical Center	54	37	17	3
Howard County	Howard County General Hospital	74	49	25	4
	CENTRAL MARYLAND TOTAL	1,202	917	285	80
Cecil County	Union Hospital of Cecil County	32	18	14	3
Dorchester County	University of Maryland Shore Medical Center at Dorchester	18	18	0	0
Kent County	University of Maryland Shore Medical Center at Chestertown	17	14	3	0
Queen Anne's County	Queen Anne's Emergency Center	14	14	0	1
Somerset County	Edward W. McCready Memorial Hospital	8	6	2	0
Talbot County	University of Maryland Shore Medical Center at Easton	32	32	0	4
Wicomico County	Peninsula Regional Medical Center	58	36	22	0
Worcester County	Atlantic General Hospital	30	7	23	5
	EASTERN SHORE TOTAL	209	145	64	13
	MARYLAND STATE TOTAL	2,178	1,593	585	141

Source: Maryland Health Care Commission, Supplemental Survey - Emergency Departments/Freestanding Medical Facilities, 2017

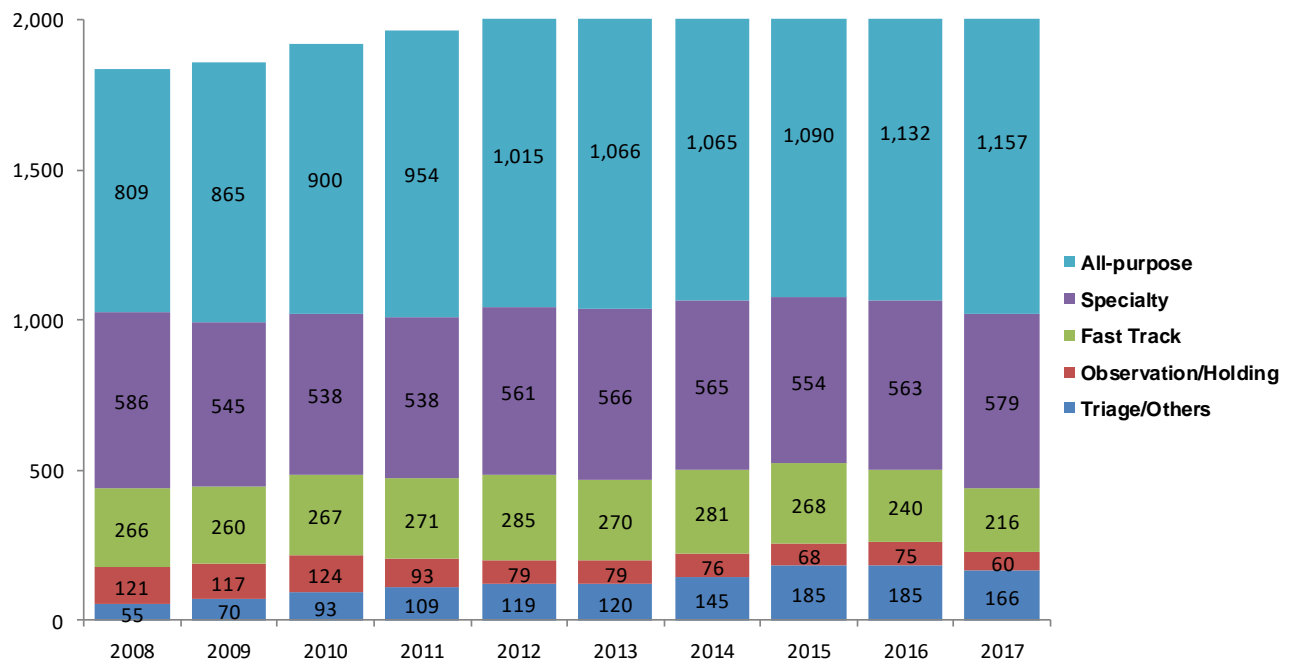
*Non-treatment spaces in Emergency Departments include decontamination, observation/holding, and triage spaces in which treatment is not provided.

**Table 17. Trends in Emergency Department/ Freestanding Medical Facilities Treatment Capacity:
Maryland, June 1, 2010 - June 1, 2017**

		Total Treatment Spaces								
Jurisdiction/Region	Hospital Name	2010	2011	2012	2013	2014	2015	2016	2017	
Frederick County	Western Maryland Regional Medical Center	51	53	53	53	53	53	53	53	
	Frederick Memorial Hospital	64	64	64	64	55	45	56	57	
	Garrett County Memorial Hospital	13	13	13	13	13	13	13	13	
Garrett County	Garrett County Memorial Hospital	13	13	13	13	13	13	13	13	
Washington County	Meritus Medical Center	48	55	55	55	55	55	55	55	
Montgomery County	WESTERN MARYLAND TOTAL	176	185	185	185	176	166	177	178	
	Adventist HealthCare Germantown Emergency Center	21	21	21	21	21	21	21	21	
	Adventist HealthCare Shady Grove Medical Center	63	64	64	64	64	64	64	64	
	Adventist HealthCare Washington Adventist Hospital	28	26	26	26	26	26	26	26	
	Holy Cross Germantown Hospital	-	-	-	-	-	14	14	14	
	Holy Cross Hospital	59	59	59	61	61	61	64	64	
	MedStar Montgomery General Hospital	41	41	41	41	41	41	41	39	
	Suburban Hospital	43	43	43	43	42	41	41	41	
	MONTGOMERY COUNTY TOTAL	234	233	233	235	255	268	271	269	
	Calvert County	CalvertHealth Medical Center	34	34	34	34	34	34	34	34
Charles County	University of Maryland Charles Regional Medical Center	30	30	30	38	38	38	38	38	
Prince George's County	Doctors Community Hospital	55	55	55	55	55	55	55	55	
	Fort Washington Medical Center	18	18	18	18	18	18	18	18	
	MedStar Southern Maryland Hospital Center	29	34	42	42	41	39	39	39	
St. Mary's County	University of Maryland Bowie Health Center	21	21	21	21	15	15	27	27	
	University of Maryland Laurel Regional Hospital	30	30	30	31	31	31	31	31	
	University of Maryland Prince George's Hospital Center	44	44	44	47	47	46	46	46	
	MedStar St. Mary's Hospital	32	32	32	32	32	32	32	32	
	SOUTHERN MARYLAND TOTAL	293	298	306	318	311	308	320	320	
	Anne Arundel County	Anne Arundel Medical Center	44	49	67	67	67	67	67	67
	University of MD Baltimore Washington Medical Center	66	66	66	66	66	68	68	65	
	Baltimore City	Bon Secours Hospital	29	32	32	28	28	28	28	
Baltimore County	Johns Hopkins Bayview Medical Center	40	40	40	40	40	45	45	50	
	MedStar Good Samaritan Hospital of Maryland	45	43	43	43	43	42	42	42	
	MedStar Harbor Hospital	35	35	35	35	35	35	29	28	
	MedStar Union Memorial Hospital	49	49	49	49	55	55	55	55	
	Mercy Medical Center	45	45	45	57	57	57	57	51	
	Sinai Hospital of Baltimore	61	61	61	61	61	67	79	79	
	St. Agnes Hospital	53	53	59	64	64	65	69	69	
	The Johns Hopkins Hospital - Main ED	51	51	73	73	73	73	73	73	
	The Johns Hopkins Hospital - Pediatric ED	25	25	35	35	35	35	35	35	
	University of Maryland Medical Center	62	62	79	85	123	123	109	92	
Baltimore County	University of Maryland Medical Center Midtown Campus	25	25	29	28	30	29	29	29	
	Greater Baltimore Medical Center	45	45	45	45	45	45	45	45	
	MedStar Franklin Square Hospital	98	96	96	96	96	96	96	96	
Carroll County	Northwest Hospital Center	43	42	44	49	54	43	61	61	
	University of Maryland St. Joseph Medical Center	39	39	39	39	38	38	38	38	
	Carroll Hospital Center	39	45	43	43	43	43	43	43	
Harford County	University of Maryland Harford Memorial Hospital	31	31	29	29	29	27	27	28	
Howard County	University of MD Upper Chesapeake Medical Center	52	52	52	57	55	54	54	54	
	Howard County General Hospital	55	55	55	55	55	55	74	74	
	CENTRAL MARYLAND TOTAL	1,032	1,041	1,116	1,144	1,192	1,190	1,223	1,202	
Cecil County	Union Hospital of Cecil County	32	32	32	32	32	32	32	32	
Dorchester County	University of Maryland Medical Center at Dorchester	11	18	18	18	18	18	18	18	
Kent County	University of Maryland Medical Center at Chestertown	11	11	11	11	11	17	17	17	
Queen Anne's County	Queen Anne's Emergency Center	-	14	14	14	14	14	14	14	
Somerset County	Edward W. McCready Memorial Hospital	8	8	8	8	8	8	8	8	
Talbot County	University of Maryland Shore Medical Center at Easton	34	34	34	34	34	34	34	32	
Wicomico County	Peninsula Regional Medical Center	51	51	51	51	51	51	51	58	
Worcester County	Atlantic General Hospital	19	19	30	30	30	30	30	30	
EASTERN SHORE TOTAL		166	187	198	198	198	204	204	209	
STATE TOTAL		1,901	1,944	2,038	2,080	2,132	2,136	2,195	2,178	

Source: Maryland Health Care Commission, Supplemental Survey - Emergency Departments/Freestanding Medical Facilities, June 1, 2017

**Chart 9. Change in Number of Emergency Treatment Spaces by Type of Space:
Maryland, 2007 - 2017**



Source: Maryland Health Care Commission, Emergency Department Supplemental Survey June 1, 2017

Hospital Surgical Services Capacity

Table 18 displays the inventory of sterile operating rooms, by room type, excluding dedicated cesarean section rooms, reported by Maryland general hospitals. Table 19 profiles the inventory of dedicated cesarean section operating rooms and procedure rooms. Procedure rooms are rooms used for endoscopy, cystoscopy, or other minor procedures and many are not sterile rooms, and thus, are only appropriately used for “closed” procedures that do not involve surgical incisions.

**Table 18. Surgical Services Capacity By Hospital and Room Use:
Maryland Hospitals, June 1, 2017**

Hospital	Inpatient General Purpose	Outpatient General Purpose	Mixed Use General Purpose	Inpatient Special Purpose	Outpatient Special Purpose	Mixed Use Special Purpose	Other Operating Rooms	Total Operating Rooms
Adventist HealthCare Shady Grove Medical Center	0	0	16	0	0	0	0	16
Adventist HealthCare Washington Adventist Hospital	0	0	8	0	0	3	0	11
Anne Arundel Medical Center	0	0	26	0	0	0	0	26
Atlantic General Hospital	0	0	4	0	0	0	0	4
Bon Secours Hospital	0	0	5	0	0	0	0	5
CalvertHealth Medical Center	0	0	6	0	0	0	0	6
Carroll Hospital Center	0	0	10	0	0	0	0	10
Doctors Community Hospital	0	3	9	0	0	0	0	12
Edward W. McCready Memorial Hospital	0	0	2	0	0	0	0	2
Fort Washington Medical Center	0	0	3	0	0	0	0	3
Frederick Memorial Hospital	0	0	11	0	0	0	0	11
Garrett County Memorial Hospital	0	0	3	0	0	0	0	3
Greater Baltimore Medical Center	0	0	30	0	0	0	0	30
Holy Cross Germantown Hospital	0	0	5	0	0	0	0	5
Holy Cross Hospital	0	0	14	0	0	0	0	14
Howard County General Hospital	0	0	13	0	0	0	0	13
Johns Hopkins Bayview Medical Center	0	0	14	0	0	0	0	14
MedStar Franklin Square Hospital	0	0	14	0	0	2	0	16
MedStar Good Samaritan Hospital of Maryland	0	0	10	0	0	1	0	11
MedStar Harbor Hospital	0	0	9	0	0	0	0	9
MedStar Montgomery General Hospital	0	0	5	1	0	0	0	6
MedStar Southern Maryland Hospital Center	0	0	10	0	0	0	0	10
MedStar St. Mary's Hospital	0	0	6	0	0	0	0	6
MedStar Union Memorial Hospital	0	0	21	0	0	0	0	21
Mercy Medical Center	0	0	23	0	0	0	3	26
Meritus Medical Center	0	0	11	0	0	0	0	11
Northwest Hospital Center	0	0	10	0	0	0	0	10
Peninsula Regional Medical Center	0	0	10	0	0	3	0	13
Sinai Hospital of Baltimore	1	4	12	2	0	6	0	25
St. Agnes Hospital	0	0	19	0	0	0	0	19
Suburban Hospital	0	0	12	2	1	0	0	15
The Johns Hopkins Hospital	0	8	46	0	7	0	0	61
Union Hospital of Cecil County	0	0	4	0	0	0	0	4
University of Maryland Baltimore Washington Medical Center	0	0	16	0	0	0	0	16
University of Maryland Charles Regional Medical Center	0	0	4	0	0	0	0	4
University of Maryland Harford Memorial Hospital	0	0	4	0	0	0	0	4
University of Maryland Laurel Regional Hospital	0	0	6	0	0	0	1	7
University of Maryland Medical Center	0	0	22	0	0	13	0	35
University of Maryland Medical Center Midtown Campus	0	0	10	0	0	0	0	10
University of Maryland Prince George's Hospital Center	1	0	8	0	0	0	1	10
University of Maryland Rehabilitation & Orthopaedic Institute	0	0	6	0	0	0	0	6
University of Maryland Shore Medical Center at Chestertown	0	0	3	0	0	0	0	3
University of Maryland Shore Medical Center at Dorchester	0	0	4	0	0	0	0	4
University of Maryland Shore Medical Center at Easton	0	0	6	0	0	0	0	6
University of Maryland St. Joseph Medical Center	0	0	15	0	0	4	0	19
University of Maryland Upper Chesapeake Medical Center	0	0	11	0	0	0	0	11
Western Maryland Regional Medical Center	0	0	14	0	0	0	0	14
TOTAL	2	15	530	5	8	32	5	597

Source: Maryland Health Care Commission, ACHI, Supplemental Survey, Surgical Services Capacity, June 1, 2017

**Table 19. Dedicated Cesarean Section Operating Rooms and Procedure Rooms by Hospital:
Maryland Hospitals, June 1, 2017**

Jurisdiction/Region	Hospital	Dedicated Cesarean Section OR's		Procedure Rooms*	
		Inside Sterile Area	Outside Sterile Area	Inside Sterile Area	Outside Sterile Area
Allegany County	Western Maryland Regional Medical Center	2	0	0	8
Frederick County	Frederick Memorial Hospital	2	0	1	2
Garrett County	Garrett County Memorial Hospital	0	0	0	1
Washington County	Meritus Medical Center	2	0	1	2
WESTERN MARYLAND TOTAL		6	0	2	13
Montgomery County	Adventist HealthCare Shady Grove Medical Center	0	3	3	0
	Adventist HealthCare Washington Adventist Hospital	2	0	2	0
	Holy Cross Germantown Hospital	2	0	1	3
	Holy Cross Hospital	4	0	2	9
	MedStar Montgomery General Hospital	2	0	1	2
	Suburban Hospital	0	0	0	3
MONTGOMERY COUNTY TOTAL		10	3	9	17
Calvert County	CalvertHealth Medical Center	1	0	1	7
Charles County	University of Maryland Charles Regional Medical Center	0	1	1	1
Prince George's County	Doctors Community Hospital	0	0	1	3
	Fort Washington Medical Center	0	0	1	1
	MedStar Southern Maryland Hospital Center	2	0	1	2
	University of Maryland Laurel Regional Hospital	0	0	0	2
	University of Maryland Prince George's Hospital Center	2	0	0	3
	<i>Total: Prince George's County</i>	<i>4</i>	<i>0</i>	<i>3</i>	<i>11</i>
St. Mary's County	MedStar St. Mary's Hospital	1	0	0	2
SOUTHERN MARYLAND TOTAL		6	1	5	21
Anne Arundel County	Anne Arundel Medical Center	3	0	0	4
	University of MD Baltimore Washington Medical Center	2	0	2	5
	<i>Total: Anne Arundel County</i>	<i>5</i>	<i>0</i>	<i>2</i>	<i>9</i>
Baltimore City	Bon Secours Hospital	0	0	1	2
	Johns Hopkins Bayview Medical Center	2	0	0	6
	MedStar Good Samaritan Hospital of Maryland	0	0	0	3
	MedStar Harbor Hospital	1	0	4	0
	MedStar Union Memorial Hospital	0	0	4	0
	Mercy Medical Center	2	0	1	14
	Sinai Hospital of Baltimore	2	0	5	1
	St. Agnes Hospital	2	0	0	1
	The Johns Hopkins Hospital	3	0	0	23
	University of Maryland Medical Center	3	0	10	2
	University of Maryland Medical Center Midtown Campus	0	0	0	8
	Univ. of MD Rehabilitation & Orthopaedic Institute	0	0	0	1
	<i>Total: Baltimore City</i>	<i>15</i>	<i>0</i>	<i>25</i>	<i>61</i>
Baltimore County	Greater Baltimore Medical Center	3	0	3	10
	MedStar Franklin Square Hospital	3	0	5	0
	Northwest Hospital Center	0	0	0	2
	University of MD St. Joseph Medical Center	2	0	1	5
	<i>Total: Baltimore County</i>	<i>8</i>	<i>0</i>	<i>9</i>	<i>17</i>
Carroll County	Carroll Hospital Center	2	0	0	3
Harford County	University of Maryland Harford Memorial Hospital	0	0	2	0
	University of Maryland Upper Chesapeake Medical Ctr.	2	0	1	0
	<i>Total: Harford County</i>	<i>2</i>	<i>0</i>	<i>3</i>	<i>0</i>
Howard County	Howard County General Hospital	2	0	1	3
CENTRAL MARYLAND TOTAL		34	0	40	93
Cecil County	Union Hospital of Cecil County	1	0	5	2
Dorchester County	University of MD Shore Medical Center at Dorchester	0	0	0	2
Kent County	University of MD Shore Medical Center at Chestertown	0	0	0	1
Somerset County	Edward W. McCready Memorial Hospital	0	0	0	0
Talbot County	University of MD Shore Medical Center at Easton	1	0	0	1
Wicomico County	Peninsula Regional Medical Center	2	0	2	2
Worcester County	Atlantic General Hospital	0	0	1	3
EASTERN SHORE TOTAL		4	0	8	11
MARYLAND TOTAL		60	4	64	155

Source: Maryland Health Care Commission, ACHI, Supplemental Survey, Surgical Services Capacity, June 1, 2017

*Procedure Rooms include dedicated cystoscopy and endoscopy rooms and other procedure rooms

Table 20 shows the trend in surgical services capacity at Maryland hospitals for the three-year period June 1, 2015 through June 1, 2017.

**Table 20. Trends in Number of Surgical Rooms:
Maryland Hospitals, 2015 - 2017**

Jurisdiction/ Region	Hospital	2015			2016			2017		
		Total Operating Rooms	Total Procedure Rooms	Total Cesarean Section OR's	Total Operating Rooms	Total Procedure Rooms	Total Cesarean Section OR's	Total Operating Rooms	Total Procedure Rooms	Total Cesarean Section OR's
Allegany County	Western Maryland Regional Medical Center	14	8	2	14	8	2	14	8	2
Frederick County	Frederick Memorial Hospital	11	4	2	11	4	2	11	3	2
Garrett County	Garrett County Memorial Hospital	3	1	0	3	1	0	3	1	0
Washington County	Meritus Medical Center	11	3	2	11	3	2	11	3	2
WESTERN MARYLAND TOTAL		39	16	6	39	16	6	39	15	6
Montgomery County	Adventist HealthCare Shady Grove Medical Center	16	3	3	16	3	3	16	3	3
	Adventist HealthCare Washington Adventist Hospital	11	2	2	11	2	2	11	2	2
	Holy Cross Germantown Hospital	5	4	2	5	4	2	5	4	2
	Holy Cross Hospital	14	11	4	14	11	4	14	11	4
	MedStar Montgomery General Hospital	6	3	2	6	3	2	6	3	2
	Suburban Hospital	15	3	0	15	3	0	15	3	0
MONTGOMERY COUNTY TOTAL		67	26	13	67	26	13	67	26	13
Calvert County	CalvertHealth Medical Center	6	8	1	6	8	1	6	8	1
Charles County	Univ. of MD Charles Regional Medical Center	4	3	1	4	2	1	4	2	1
Prince George's County	Doctors Community Hospital	12	4	0	12	4	0	12	4	0
	Fort Washington Medical Center	3	2	0	3	2	0	3	2	0
	MedStar Southern Maryland Hospital Center	10	3	2	10	3	2	10	3	2
	University of Maryland Laurel Regional Hospital	7	3	1	7	2	0	7	2	0
	University of Maryland Prince George's Hospital Center	9	4	2	9	4	2	10	3	2
St. Mary's County	MedStar St. Mary's Hospital	6	2	1	6	2	1	6	2	1
SOUTHERN MARYLAND TOTAL		57	29	8	57	27	7	58	26	7
Anne Arundel County	Anne Arundel Medical Center	26	4	3	26	4	3	26	4	3
	Univ. of MD Baltimore Washington Medical Center	16	7	2	16	7	2	16	7	2
Baltimore City	Bon Secours Hospital	5	3	0	5	3	0	5	3	0
	Johns Hopkins Bayview Medical Center	14	6	2	14	6	2	14	6	2
	MedStar Good Samaritan Hospital	11	5	0	11	5	0	11	3	0
	MedStar Harbor Hospital	9	4	1	9	4	1	9	4	1
	MedStar Union Memorial Hospital	21	4	0	21	4	0	21	4	0
	Mercy Medical Center	22	8	2	26	9	2	26	15	2
	Sinai Hospital of Baltimore	25	6	2	25	6	2	25	6	2
	St. Agnes Hospital	19	1	2	19	1	2	19	1	2
	The Johns Hopkins Hospital	61	23	3	61	23	3	61	23	3
	University of Maryland Medical Center	35	12	3	35	12	3	35	12	3
	Univ. of MD Medical Center Midtown Campus	10	8	0	10	8	0	10	8	0
	Univ. of MD Rehabilitation & Orthopaedic Institute	6	1	0	6	1	0	6	1	0
Baltimore County	Greater Baltimore Medical Center	30	13	3	30	13	3	30	13	3
	MedStar Franklin Square Hospital Center	16	5	3	16	5	3	16	5	3
	Northwest Hospital Center	9	2	0	9	2	0	10	2	0
	University of Maryland St. Joseph Medical Center	19	6	2	19	6	2	19	6	2
Carroll County	Carroll Hospital Center	10	3	2	10	3	2	10	3	2
Harford County	University of Maryland Harford Memorial Hospital	4	7	0	4	2	0	4	2	0
	University of MD Upper Chesapeake Medical Ctr.	11	2	2	11	1	2	11	1	2
Howard County	Howard County General Hospital	13	4	2	13	4	2	13	4	2
CENTRAL MARYLAND TOTAL		392	134	34	396	129	34	397	133	34
Cecil County	Union Hospital of Cecil County	3	5	1	4	7	1	4	7	1
Dorchester County	Univ. of MD Shore Medical Center at Dorchester	4	2	0	4	2	0	4	2	0
Kent County	Univ. of MD Shore Medical Center at Chestertown	3	1	0	3	1	0	3	1	0
Somerset County	Edward W. McCready Memorial Hospital	2	0	0	2	0	0	2	0	0
Talbot County	Univ. of MD Shore Medical Center at Easton	6	1	1	6	1	1	6	1	1
Wicomico County	Peninsula Regional Medical Center	13	3	2	13	3	2	13	4	2
Worcester County	Atlantic General Hospital	4	4	0	4	4	0	4	4	0
EASTERN SHORE TOTAL		35	16	4	36	18	4	36	19	4
MARYLAND TOTAL		590	221	65	595	216	64	597	219	64

Source: Maryland Health Care Commission, Surgical Services Survey, June 1, 2017

Obstetric and Perinatal Services Capacity

Thirty-two of the 47 general hospitals in Maryland provide obstetric and perinatal services. Table 21 outlines the distribution of obstetric service capacity by region, county and hospital.

Table 21. Obstetric Service Capacity, Maryland Hospitals, June 1, 2017

Jurisdiction/ Region	Hospital	Labor Beds	Delivery Beds	Recovery Beds	Ante Partum	Post Partum Beds	Labor- Delivery Beds	Labor- Delivery- Recovery (LDR) Beds	Delivery- Recovery- PostPartum (LDRP) Beds	Cesarean Section ORs
Allegany County	Western Maryland Regional Medical Center	0	0	2	2	14	0	4	0	2
Frederick County	Frederick Memorial Hospital	0	0	0	0	27	0	9	0	2
Garrett County	Garrett County Memorial Hospital	1	0	0	2	2	0	1	3	0
Washington County	Meritus Medical Center	0	0	0	6	6	0	0	18	2
WESTERN MARYLAND TOTAL		1	0	2	10	49	0	14	21	6
Montgomery County	Adventist HealthCare Shady Grove Medical Center	0	0	6	8	48	0	16	0	3
	Adventist HealthCare Washington Adventist Hospital	0	0	0	0	20	0	9	0	2
	Holy Cross Germantown Hospital	0	0	2	4	12	0	5	0	2
	Holy Cross Hospital	0	0	0	16	68	0	24	0	4
	MedStar Montgomery General Hospital	2	0	2	2	11	0	5	0	2
MONTGOMERY COUNTY TOTAL		2	0	10	30	159	0	59	0	13
Calvert County	Calvert Health Medical Center	0	0	0	1	12	0	5	0	1
Charles County	Univ. of MD Charles Regional Medical Center	0	0	0	2	12	0	4	0	1
Prince George's County	MedStar Southern Maryland Hospital Center	0	0	4	0	30	0	8	0	2
	University of Maryland Prince George's Hospital Center	0	0	0	0	38	0	11	2	2
	<i>Total: Prince George's County</i>	<i>0</i>	<i>0</i>	<i>4</i>	<i>0</i>	<i>68</i>	<i>0</i>	<i>19</i>	<i>2</i>	<i>4</i>
St. Mary's County	MedStar St. Mary's Hospital	0	0	0	1	12	0	5	0	1
SOUTHERN MARYLAND TOTAL		0	0	4	4	104	0	33	2	7
Anne Arundel County	Anne Arundel Medical Center	0	0	5	4	36	0	24	0	3
	Univ. of MD Baltimore Washington Medical Ctr.	0	0	4	0	15	0	4	0	2
	<i>Total: Anne Arundel County</i>	<i>0</i>	<i>0</i>	<i>9</i>	<i>4</i>	<i>51</i>	<i>0</i>	<i>28</i>	<i>0</i>	<i>5</i>
Baltimore City	Johns Hopkins Bayview Medical Center	0	0	2	0	22	0	6	0	2
	MedStar Harbor Hospital	0	0	0	0	8	0	0	16	1
	Mercy Medical Center	0	0	3	3	29	0	13	0	2
	Sinai Hospital of Baltimore	0	0	3	4	23	0	8	0	2
	St. Agnes Hospital	0	0	0	0	0	0	12	0	2
	The Johns Hopkins Hospital	0	0	3	0	35	0	10	0	3
	University of Maryland Medical Center	5	0	3	8	14	0	7	0	3
Baltimore County	<i>Total: Baltimore City</i>	<i>5</i>	<i>0</i>	<i>14</i>	<i>15</i>	<i>131</i>	<i>0</i>	<i>56</i>	<i>16</i>	<i>15</i>
	Greater Baltimore Medical Center	0	0	0	12	48	0	17	0	3
	MedStar Franklin Square Hospital	0	0	5	0	17	0	0	20	3
	University of Maryland St. Joseph Medical Center	0	0	0	9	20	0	9	0	2
	<i>Total: Baltimore County</i>	<i>0</i>	<i>0</i>	<i>5</i>	<i>21</i>	<i>85</i>	<i>0</i>	<i>26</i>	<i>20</i>	<i>8</i>
Carroll County	Carroll Hospital Center	0	0	2	0	5	0	0	15	2
Harford County	University of MD Upper Chesapeake Medical Center	0	0	2	0	0	0	0	14	2
Howard County	Howard County General Hospital	0	0	3	3	34	0	14	0	2
CENTRAL MARYLAND TOTAL		5	0	35	43	306	0	124	65	34
Cecil County	Union Hospital of Cecil County	0	0	0	0	3	0	0	8	1
Talbot County	Univ. of MD Shore Medical Center at Easton	0	0	1	3	0	0	0	10	1
Wicomico County	Peninsula Regional Medical Center	0	0	0	0	20	0	13	0	2
EASTERN SHORE TOTAL		0	0	1	3	23	0	13	18	4
MARYLAND TOTAL		8	0	52	90	641	0	243	106	64

Source: Maryland A12: L48nd Health Care Commission, ACHI, Supplemental Survey, Obstetric Service Capacity, June 1, 2017

Newborn nursery bassinets at the 32 hospitals providing perinatal service are shown below in Table 22.

**Table 22. Newborn Nursery Bassinets:
Maryland Hospitals, FY 2018**

Jurisdiction/ Region	Hospital	Newborn Nursery	Premature Nursery	Neonatal Intensive Care	Total Bassinets
Allegany County	Western Maryland Regional Medical Center	20	0	0	20
Frederick County	Frederick Memorial Hospital	30	0	15	45
Garrett County	Garrett County Memorial Hospital	12	0	0	12
Washington County	Meritus Medical Center	41	0	0	41
WESTERN MARYLAND TOTAL		103	0	15	118
Montgomery County	Adventist HealthCare Shady Grove Medical Center	48	0	31	79
	Adventist HealthCare Washington Adventist Hospital	36	0	0	36
	Holy Cross Germantown Hospital	17	8	0	25
	Holy Cross Hospital	113	0	46	159
	MedStar Montgomery General Hospital	14	0	0	14
MONTGOMERY COUNTY TOTAL		228	8	77	313
Calvert County	CalvertHealth Medical Center	12	0	0	12
Charles County	Univ. of MD Charles Regional Medical Center	15	0	0	15
Prince George's County	MedStar Southern Maryland Hospital Center	16	8	0	24
	University of Maryland Prince George's Hospital Center	40	0	13	53
	<i>Total: Prince George's County</i>	<i>56</i>	<i>8</i>	<i>13</i>	<i>77</i>
St. Mary's County	MedStar St. Mary's Hospital	16	0	0	16
SOUTHERN MARYLAND TOTAL		99	8	13	120
Anne Arundel County	Anne Arundel Medical Center	40	0	30	70
	Univ. of MD Baltimore Washington Medical Center	15	0	0	15
	<i>Total Anne Arundel County</i>	<i>55</i>	<i>0</i>	<i>30</i>	<i>85</i>
Baltimore City	Johns Hopkins Bayview Medical Center	20	0	25	45
	MedStar Harbor Hospital	44	0	0	44
	Mercy Medical Center, Inc.	40	0	26	66
	Sinai Hospital of Baltimore	35	0	21	56
	St. Agnes Healthcare	36	0	24	60
	The Johns Hopkins Hospital	25	0	45	70
	University of Maryland Medical Center	24	0	52	76
	<i>Total: Baltimore City</i>	<i>224</i>	<i>0</i>	<i>193</i>	<i>417</i>
Baltimore County	Greater Baltimore Medical Center, Inc.	60	0	30	90
	MedStar Franklin Square Hospital Center	35	0	21	56
	University of Maryland St. Joseph Medical Center	20	0	20	40
	<i>Total: Baltimore County</i>	<i>115</i>	<i>0</i>	<i>71</i>	<i>186</i>
Carroll County	Carroll Hospital Center	25	0	0	25
Harford County	University of MD Upper Chesapeake Medical Center	10	0	0	10
Howard County	Howard County General Hospital	30	0	18	48
CENTRAL MARYLAND TOTAL		459	0	312	771
Cecil County	Union Hospital of Cecil County	12	0	0	12
Talbot County	Univ. of MD Shore Medical Center at Easton	18	0	0	18
Wicomico County	Peninsula Regional Medical Center	18	0	10	28
EASTERN SHORE TOTAL		48	0	10	58
MARYLAND TOTAL		937	16	427	1,380

Source: Maryland Health Care Commission, ACHI, FY2018

Special Hospital Services, Comprehensive Care Facilities in the Hospital Setting, and Hospital-Based Psychiatric Inpatient Care

Special hospitals are facilities that have an organized medical staff of physicians and that include inpatient beds with medical services. The medical services include physician services and continuous registered professional nursing services, for not less than 24 hours every day, to provide diagnosis and treatment for patients who have specific medical conditions. In Maryland, special hospitals provide specialized rehabilitation, chronic care, pediatric and psychiatric services. Special hospital services may be provided on the campus of a general hospital. With the exception of acute care psychiatric beds located within general hospitals, which are included as part of the general hospital's licensed acute care bed capacity, special hospital beds are separately licensed from general hospital beds. Special hospital beds are not included in the formula-driven annual re-licensure process for acute care beds located in general hospitals. Thus, there should be consistency between licensed bed inventory and physical bed capacity reported for a specialty hospital.

Special Hospital Medical Rehabilitation Services

Acute inpatient rehabilitation is defined, at COMAR 10.24.09, as interdisciplinary care provided to persons with disabilities who are at high risk of potential medical instability, have a potential for needing skilled nursing care of a high medical acuity, and require a mix of services, service intensity levels, and settings of the following type:

1. Regular, direct individual contact by a physiatrist or physician of equivalent training and/or experience in rehabilitation who serves as their lead provider;
2. Daily rehabilitation nursing for multiple and/or complex needs;
3. A minimum of three hours of physical or occupational therapy per day, at least five days per week, in addition to therapies or services from a psychologist, a social worker, a speech-language pathologist, and a therapeutic recreation specialist, as determined by the individual's needs; or
4. Based on their individual needs, other services provided in a health care facility that is licensed as a hospital.

There are five (5) licensed special hospitals that provide medical rehabilitation services in Maryland and ten (10) Maryland acute care hospitals have special hospital units that provide medical rehabilitation services. Table 23 profiles the types of rehabilitation programs offered at these facilities, the number of licensed beds, and the number of licensed beds that are regularly staffed. Staffed beds are defined as the number of beds regularly maintained (set up and staffed for use) for inpatients. In this table, adult patients are defined as 18 years of age and older and pediatric patients are patients under the age of 18. The program listings are medical rehabilitation services that are accredited by the Commission on Accreditation of Rehabilitation Facilities (CARF). CARF is an independent nonprofit accrediting body of human service providers in the areas of aging services, behavioral health, child and youth services, durable medical equipment, prosthetics, orthotics and orthotic supplies, employment and community services, medical rehabilitation, and opioid treatment programs. CARF accreditation is required by the State of Maryland for licensure of rehabilitation facilities.

Table 23. Inpatient Medical Rehabilitation Services by Region and Jurisdiction, June 1, 2017

Table 23: Inpatient Medical Rehabilitation Services by Region and Jurisdiction, June 1, 2017													
Jurisdiction/ Region	Hospital	CARF Accredited Inpatient Medical Rehabilitation Programs Offered										Licensed Beds	Staffed Beds
		Comprehensive		Brain Injury		Spinal Cord		Stroke		Amputation			
		Adult	Pediatric	Adult	Pediatric	Adult	Pediatric	Adult	Pediatric	Adult	Pediatric		
Allegany County	Western Maryland Regional Medical Center	✓						✓				13	13
Washington County	Meritus Medical Center	✓		✓								20	20
Montgomery County	Adventist Rehabilitation Hospital of Maryland	✓		✓		✓		✓		Western Maryland Total		33	33
										✓		87	87
Prince George's County	University of Maryland Laurel Regional Hospital	✓						✓		Montgomery County Total		87	87
												28	10
										Southern Maryland Total		28	10
Baltimore City	Univ. of MD Rehabilitation & Orthopaedic Institute	✓	✓	✓	✓	✓	✓	✓				82	129*
	Johns Hopkins Bayview Medical Center	✓						✓				12	12
	Kennedy Krieger Children's Hospital		✓		✓			✓				31	31
	Levindale Hebrew Geriatric Center & Hospital	✓		✓								20	20
	MedStar Good Samaritan Hospital	✓						✓				69	69
	MedStar Union Memorial Hospital												
	Mount Washington Pediatric Hospital		✓									46	26
	Sinai Hospital of Baltimore	✓		✓				✓				57	43
	The Johns Hopkins Hospital	✓										18	18
										Central Maryland Total		335	219
Talbot County	Univ. of MD Shore Medical Center at Easton	✓						✓				20	18
Wicomico County	HealthSouth Chesapeake Rehabilitation Center	✓										59	59
										Eastern Shore Total		79	77
										MARYLAND TOTAL		562	426

Source: Maryland Health Care Commission and Commission on Accreditation of Rehabilitation Facilities (CARF) 11/9/2017.

Notes: 1. Licensed Beds for Adventist Rehabilitation Hospital of Maryland at Takoma Park are included in Adventist Rehabilitation of Maryland. 2. University of Maryland Rehabilitation & Orthopaedic Institute (formerly James Lawrence Kernan Hospital) staffed beds include 36 chronic beds/16 dually licensed rehabilitation/chronic beds. Chronic and Rehabilitation beds are not separated by service area. 3. Effective 2/22/2016 18 licensed rehabilitation beds were transferred from MedStar Union Memorial Hospital to MedStar Good Samaritan Hospital.

Other Special Hospital Services (non-psychiatric)

Pediatric

Facilities with beds licensed as Special Hospital – Pediatric are used to provide specialized inpatient services to patients less than 18 years of age. There are two special hospitals in Maryland dedicated to providing specialized pediatric services. Both hospitals provide rehabilitation and other special hospital services. Mount Washington Pediatric Hospital has been allowed to operate, under a single license, its main hospital facility in Baltimore City and a 15-bed hospital in Prince George's County, which operates in leased space at Prince George's Hospital Center, a general hospital. (See Table 24).

Chronic Care

Facilities with beds licensed as Special Hospital-Chronic provide continuous and intensive medical, nursing, and ancillary services to medically-complex patients with severe illness who require close professional monitoring and observation and frequent medical interventions, either after an acute hospital phase of care or as a result of acute exacerbations of illness while residing in other settings, such as the patient's home or a nursing home (comprehensive care facility).

There are three special hospitals—chronic operating in Maryland that do not share a campus with a general hospital. (See Table 24.) They range in size from 60 to 100 beds, and are currently licensed to operate 226 beds but only 128 are reported to be regularly staffed. One of these chronic hospitals is private, and two are state-operated. The private chronic special hospital, Levindale Hebrew & Geriatric Center & Hospital, is located in the Central Maryland region and combines special chronic hospital beds with special rehabilitation hospital beds and comprehensive care (nursing home beds). It is located adjacent to a sister general hospital, Sinai Hospital of Baltimore. The two state operated chronic hospitals are each located in the less densely populated Health Planning Regions of Western Maryland and the Eastern Shore. Five acute care general hospitals, three located in Baltimore City and one each in Prince George's County (the Southern Maryland region) and Montgomery County share a campus with chronic special hospital services.² The three Central Maryland Hospitals have a total of 238 licensed chronic care beds located on their campuses, with 128 reported to be staffed. The Mount Washington Pediatric Hospital at Prince George's Hospital Center (see preceding section of this report concerning pediatric special hospitals) has 15 licensed pediatric specialty beds with 12 reported to be staffed.

² Adventist HealthCare Washington Adventist Hospital is the Montgomery County hospital. It shares a campus with a special rehabilitation hospital that is a portion of a single licensed rehabilitation hospital with beds operating on separate premises, contrary to hospital licensure regulations.

Chronic beds and pediatric special hospital beds, operated on an acute care hospital campus, are licensed separately and are not part of the annual acute care bed licensure process.

**Table 24. Licensed Special Hospitals and their Special Hospital (Non-Psychiatric and Non-Rehabilitation) Beds
Maryland, June 1, 2017**

Jurisdiction/ Region	Specialty Hospitals	Pediatric		Chronic	
		Licensed	Staffed	Licensed	Staffed
Washington County	Western Maryland Center	-	-	60	19
	Western Maryland Total	-	-	60	19
Prince George's County	Mt. Washington Pediatric Hospital at University of MD Prince Georges Hospital Ctr.	15	12	-	-
	Southern Maryland Total	15	12	-	-
Baltimore City	Kennedy Krieger Children's Hospital	39	39	-	-
	Levindale Hebrew Geriatric Center & Hospital	-	-	100	100
	Mount Washington Pediatric Hospital	41	38	-	-
	Central Maryland Total	80	77	100	100
Wicomico County	Deer's Head Center*	-	-	66	9
	Eastern Shore Total	-	-	66	9
	Maryland Total	95	89	226	128

Source: Maryland Health Care Commission, Office of Health Care Quality, DHMH, Hospital Management System, 2017

Deer's Head Center has 3 staffed communicable disease (isolated beds).

**Table 25. Licensed Special Hospital (Non-Psychiatric and Non-Rehabilitation) Beds:
Located on Acute Care Hospital Campuses, Maryland, June 1, 2017**

Jurisdiction/ Region	Acute Care Hospitals	Chronic		Dual Rehabilitation/ Chronic		Pediatric Specialty	
		Licensed	Staffed	Licensed	Staffed	Licensed	Staffed
Baltimore City/Central Maryland	Univ. of MD Rehabilitation & Orthopaedic Institute*	36	36	16	16	-	-
Baltimore City/Central Maryland	Johns Hopkins Bayview Medical Center	76	47	-	-	-	-
Baltimore City/Central Maryland	Univ. of MD Medical Center Midtown Campus	80	25	-	-	-	-
Prince George's/Southern Maryland	Mt. Washington Pediatric Hosp. at Prince George's Hosp.	-	-	-	-	15	12
Prince George's/Southern Maryland	Univ. of MD Laurel Regional Hospital	46	20	-	-	-	-
	Maryland State Total	238	128	16	16	15	12

Source: Maryland Health Care Commission; Office of Health Care Quality, June 1, 2017. *Univ. of MD Rehabilitation & Orthopaedic Institute (formerly James Lawrence Kernan Hospital) staffed chronic beds may exceed licensed beds through use of dually licensed Rehabilitation/Chronic Care beds.

Comprehensive Care Facility (Nursing Home) Beds in the Hospital Setting

Comprehensive Care Facilities (“CCFs”), commonly known as “nursing homes,” are licensed in accordance with COMAR 10.07.02. These facilities admit patients suffering from disease or disabilities, or advanced age, requiring medical service and nursing service rendered by or under the supervision of a registered nurse. The vast bulk of CCF services are provided in Maryland through freestanding (non-hospital) CCFs, commonly known as nursing homes. Only 1.9 % of the state’s total CCF beds are located in general or special hospital settings. However, this type of inpatient facility service is also offered by five (5) acute care general hospitals (Table 26) and by three (3) facilities that combine comprehensive care facility services (Table 27) with chronic care services (Table 24). CCF beds in general hospitals are primarily used to provide short-term rehabilitative services to Medicare patients. In contrast, most of the state’s CCF beds are used to provide longer-term chronic and custodial care.

**Table 26. Licensed Comprehensive Care Facility Beds at Acute Care Hospitals,
Maryland, June 1, 2017**

Jurisdiction/ Region	Hospital	Licensed Comprehensive Care Facility Beds	Staffed Beds
Garrett County	Garrett County Memorial Hospital	10	10
Western Maryland Total		10	10
Calvert County	CalvertHealth Medical Center*	18	14
Southern Maryland Total		18	14
Baltimore City	Mercy Medical Center*	29	29
Baltimore County	Greater Baltimore Medical Center	27	27
	Northwest Hospital Center	39	39
Central Maryland Total		95	95
Maryland Total - Acute Care Hospitals		123	119

Source: Maryland Health Care Commission, Office of Health Care Quality

Note: MedStar Good Samaritan Hospital closed the Comprehensive Care Unit (SubAcute) effective 9/19/2017. * CalvertHealth Medical Center Comprehensive Care Facility Beds closed on 12/31/2017, and Mercy Medical Center Comprehensive Care Beds closed on 1/11/2017.

**Table 27. Licensed Comprehensive Care Facility Beds at Special Hospitals
June 1, 2017**

Jurisdiction/ Region	Hospital	Licensed Comprehensive Care Facility Beds	Staffed Beds
Wicomico County/ Eastern Shore	Deer's Head Center	80	42
Baltimore City/ Central Maryland	Levindale Hebrew Geriatric Center & Hospital	210	210
Washington County/ Western Maryland	Western Maryland Center	63	46
Maryland State Total		353	298

Source: Maryland Health Care Commission, Office of Health Care Quality, DHMH, Hospital Management System

Psychiatric Hospital Facilities and Services

In Maryland, two types of hospital-level inpatient psychiatric services are provided; acute psychiatric services and longer-term, continuing care. Most acute inpatient psychiatric care is provided within the general hospital setting at 29 hospitals. These psychiatric beds are included in the annual “dynamic” licensure process for all acute care beds located in acute care general hospitals in which the licensed acute care bed inventory is based on recorded average daily census. Hospital-level psychiatric inpatient care outside of the acute care general hospital setting can be found in freestanding private hospitals or in state hospitals. The psychiatric beds in these two facility types are licensed as a category of “special hospital” beds under the State’s licensing statute. Freestanding private psychiatric hospitals primarily provide acute psychiatric inpatient services. State psychiatric hospitals primarily provide long-term, psychiatric inpatient services.

Table 28 provides an overview of the acute psychiatric inpatient service bed capacity and program characteristics of general hospitals. In general, services for children are provided to a patient population under the age of 13 years, adolescent services are provided to patients aged 13 to 17, and adult services are provided to patients aged 18 years and older.

**Table 28. Inpatient Acute Psychiatric Services Available at General Acute Care Hospitals:
Maryland, FY 2018**

Jurisdiction/ Region		Designated FY 2018 Licensed Beds	Acute Adult	Acute Child	Acute Adolescent	Acute Geriatric	Accept Involuntary Patients
Allegany County Frederick County	Western Maryland Regional Medical Center	19	√			√	√
	Frederick Memorial Hospital	21	√			√	√
	Meritus Medical Center	18	√			√	√
Western Maryland Total		58					
Montgomery County	Adventist HealthCare Washington Adventist Hospital	39	√			√	√
	Holy Cross Germantown Hospital	6	√				No
	MedStar Montgomery General Hospital	19	√		√	√	No
	Suburban Hospital	24	√		√	√	No
Montgomery County Total		88					
Calvert County Prince George's County	CalvertHealth Medical Center	8	√		√		√
	MedStar Southern Maryland Hospital Center	25	√			√	√
	University of MD Laurel Regional Hospital	16	√				No
	University of Maryland Prince George's Hospital Center	28	√				√
St. Mary's County	MedStar St. Mary's Hospital	12	√				√
Southern Maryland Total		89					
Anne Arundel County Baltimore City Baltimore County	Univ. of MD Baltimore Washington Medical Center	14	√			√	√
	Bon Secours Hospital	24	√				√
	Johns Hopkins Bayview Medical Center	20	√				No
	MedStar Harbor Hospital	26	√			√	√
	Sinai Hospital of Baltimore	24	√			√	√
	The Johns Hopkins Hospital	108	√	√		√	√
	University of Maryland Medical Center	56	√	√		√	√
	Univ. of MD Medical Center Midtown Campus	28	√			√	√
	MedStar Franklin Square Hospital	40	√		√		√
	Northwest Hospital	37	√			√	√
	University of Maryland St. Joseph Hospital	18	√			√	No
	Carroll Hospital Center	20	√		√		√
Harford County	University of Maryland Harford Memorial Hospital	29	√				√
Howard County	Howard County General Hospital	20	√			√	√
Central Maryland Total		464					
Cecil County	Union Hospital of Cecil County	11	√			√	√
Dorchester County	University of MD Shore Medical Center at Dorchester	24	√				√
Wicomico County	Peninsula Regional Medical Center	13	√				√
Eastern Shore Total		48					
Maryland State Total		747					

Source: Maryland Health Care Commission survey of psychiatric services capacity, June, 2017.

Note: Western Maryland Regional Medical Center, Washington County Hospital, and Howard County General report that adolescents (defined as 16+) may be provided services in the same section as adults. Suburban combines adolescents (13+), adults and geriatric in a combined unit. Adult and Geriatric units are combined at Frederick Memorial, MedStar Montgomery General Hospital, Laurel Regional, Prince George's Hospital, Sinai, Northwest, and University of Maryland St. Joseph's Hospital.

Tables 29 and 30 profile psychiatric inpatient service capacity and inpatient program characteristics at Special Hospitals – Psychiatric. Table 29 identifies the licensed bed capacity and the number of beds reported to be regularly staffed at Maryland's four freestanding private psychiatric hospitals. Table 30 identifies the number of licensed beds and "budgeted" beds, at Maryland's four state-operated psychiatric hospitals. The number of "budgeted" beds provides a more accurate reflection of the bed capacity that is typically set up and staffed at these facilities than the number of licensed beds.

**Table 29. Inpatient Services Available at Private Special Hospitals - Psychiatric:
Maryland, June 1, 2017**

Jurisdiction/ Region	Special Hospital Name	Licensed Capacity	Staffed Beds	Acute Adult	Acute Child	Acute Adolescent	Acute Geriatric	Accept Involuntary Patients
Washington County	Brook Lane Health Services	65	57	√	√	√		√
Western Maryland Total		65	57					
Montgomery County	Adventist Behavioral Health Rockville	117	118	√	√	√	√	√
Montgomery County Total		117	118					
Baltimore County	Sheppard and Enoch Pratt Hospital	322	258	√	√	√	√	√
Howard County	Sheppard Pratt at Ellicott City	92	78	√		√		√
Central Maryland Total		414	336					
Maryland State Total		596	511					

Source: Maryland Health Care Commission Survey: Special Hospitals - Psychiatric, June 1, 2017

Adventist Behavioral Health Eastern Shore closed and temporarily delicensed 15 beds 11/20/2016

**Table 30. Inpatient Psychiatric Services Provided at State Special Hospitals - Psychiatric
Maryland, June 1, 2017**

Jurisdiction/ Region	Special Hospital Name	Licensed Psychiatric Beds	Budgeted Psychiatric Beds	Acute Adult	Acute Child	Acute Adolescent	Acute Geriatric	Acute Forensic	Accept Involuntary Patients
Allegany County	Thomas B. Finan Center	88	66	√			√	√	√
Western Maryland Total		88	66						
Baltimore County	Spring Grove Hospital Center	639	355	√		√	√	√	√
Carroll County	Springfield Hospital Center	522	220	√			√	√	√
Howard County	Clifton T. Perkins Hospital Center	298	258					√	√
Central Maryland Total		1,459	833						
Dorchester County	Eastern Shore Hospital Center	80	60	√			√	√	√
Eastern Shore Total		80	60						
Maryland State Total		1,627	959						

Source: Maryland Health Care Commission Survey: Special Hospitals - Psychiatric, June 1, 2017. DHMH, Hospital Management Information System. Licensed and budgeted bed totals include both acute and continuing care psychiatric beds.

Partial hospitalization programs (PHP) and intensive outpatient programs (IOP) for psychiatric patients are also provided in the acute care general hospital setting and the special hospital psychiatric setting. PHPs and IOPs are organized day or night programs providing assessment, treatment, habilitation, or rehabilitation services for persons who do not require psychiatric inpatient care on a 24-hour basis. This may be a structured, ongoing program that the patient typically attends two to five times a week for two to five hours per day providing clinical behavioral health services. The plan of care is prescribed by and overseen by a psychiatrist. PHPs may be used as a “step-down” from inpatient care or a “step-up” from less intensive outpatient programming and are sometimes called “day hospital” programs. Services are usually provided in a group setting for at least four hours of direct clinical care per day, with additional individual and/or family therapy and medication management as needed. IOPs are a subset of PHPs and would typically involve fewer sessions per week and/or fewer hours per daily session. IOPs may be used as a “step-down” from PHPs or a “step-up” from less intensive outpatient care outside of the institutional setting.

MHCC surveyed the availability of PHPs and IOPs at hospitals, requesting information on the maximum number of treatment “slots” available and the daily program census on four specific dates between September, 2016 and June, 2017. Tables 31 and 32 profile these programs as offered in 22 acute care general hospitals and four freestanding private psychiatric hospitals, respectively.

State-operated psychiatric hospitals do not provide PHP or IOP services. [NOTE: Average daily census is the average number of patients based on patient census for four specific dates between September, 2014 and June, 2015, as reported by each hospital.]

Table 31. Partial Hospitalization and/or Intensive Outpatient Psychiatric Services at Acute Care Hospitals: Maryland, June 1, 2017

Jurisdiction/ Region	Acute Care General Hospital Name	Partial Hospitalization/ Intensive Outpatient Programs	Maximum Number of Slots Available	Average Patient Census: Partial Hospitalization/ Intensive Outpatient Programs
Allegany County Frederick County	Western Maryland Regional Medical Center	√	20	16
	Frederick Memorial Hospital	√	15	10
	Meritus Medical Center	√	14	3
Western Maryland Total			49	
	Adventist HealthCare Washington Adventist Hospital	√	24	27
	MedStar Montgomery General Hospital	√	60	41
	Holy Cross Germantown	—	—	—
	Suburban Hospital	√	20	14
Montgomery County Total			104	
Calvert County Prince George's County	CalvertHealth Medical Center	√	15	9
	University of Maryland Laurel Regional Hospital	√	14	9
	University of Maryland Prince George's Hospital Center	√	14	6
	MedStar Southern Maryland Hospital Center	√	20	8
St. Mary's County	MedStar St. Mary's Hospital	√	10	4
Southern Maryland Total			73	
Anne Arundel County Baltimore City Baltimore County	Univ. of MD Baltimore Washington Medical Ctr.	√	16	6
	Bon Secours Hospital	√	12	9
	Johns Hopkins Bayview Medical Center	√	100	51
	MedStar Harbor Hospital	—	—	—
	Sinai Hospital of Baltimore	√	12	6
	University of MD Medical Ctr. Midtown Campus	—	—	—
	The Johns Hopkins Hospital	√	32	17
	University of Maryland Medical Center	√	20	6
	MedStar Franklin Square Hospital	—	—	—
	Northwest Hospital	—	—	—
	University of Maryland St. Joseph Hospital	√	25	9
	Carroll Hospital Center	√	35	14
Harford County	University of Maryland Harford Memorial Hospital	√	20	5
Howard County	Howard County General Hospital	—	—	—
Central Maryland Total			272	
Cecil County	Union Hospital of Cecil County	—	—	—
Dorchester County	Univ. of MD Shore Medical Center at Dorchester	√	16	9
Wicomico County	Peninsula Regional Medical Center	√	6	4
Eastern Shore Total			22	
Maryland State Total			520	

Source: Maryland Health Care Commission survey of psychiatric services capacity, June, 2017.

Note: Sinai Hospital of Baltimore's Partial Hospitalization/ Intensive Outpatient Program is undergoing renovations and reported no patients for the fourth quarter of FY2017.

Table 32. Partial Hospitalization and/or Intensive Outpatient Services at Private Special Hospitals - Psychiatric: Maryland, June 1, 2017

Jurisdiction/Region	Special Hospital - Psychiatric	Partial Hospitalization/ Intensive Outpatient Programs	Maximum Slots Available: Partial Hospitalization/ Intensive Outpatient Programs	Average Daily Census
Washington County	Brook Lane Health Services	√	40	30
	<i>Western Maryland Total</i>		40	
Montgomery County	Adventist Behavioral Health - Rockville	√	33	18
	<i>Montgomery County Total</i>		33	
Baltimore County	Sheppard Pratt Hospital	√	125	106
Howard County	Sheppard Pratt at Ellicott City	√	20	15
	<i>Central Maryland Total</i>		145	
	<i>Maryland State Total</i>		218	

Source: Maryland Health Care Commission survey of psychiatric services capacity, June, 2017

The following Tables (Tables 33, 34 & 35) profile psychiatric hospital bed capacity for the three types of hospital settings, across several bed capacity dimensions, including licensed beds, physical bed capacity, and staffed beds. They also provide recent patient day and bed occupancy rate information for CY2016 or in the case of State Psychiatric Hospital bed occupancy rate information for FY2016.

**Table 33. Inventory and Utilization of Psychiatric Beds at General Acute Care Hospitals
Maryland, FY2018**

Jurisdiction/Region	Acute Care General Hospitals	Licensed Beds Designated Psychiatric FY 2018	Beds, June 1, 2017		Patient Days CY 2016	Staffed Bed Occupancy CY2016
			Physical Bed Capacity	Staffed Beds		
Allegany County Frederick County	Western Maryland Regional Medical Center	19	19	17	4,866	78%
	Frederick Memorial Hospital	21	21	21	6,890	90%
	Meritus Medical Center	18	18	18	4,944	75%
Western Maryland Total		58	58	56	16,700	82%
Montgomery County	Adventist HealthCare Washington Adventist Hospital	39	40	40	8,359	57%
	Holy Cross Germantown Hospital	6	6	6	1,497	68%
	MedStar Montgomery General Hospital	19	21	20	4,067	56%
	Suburban Hospital	24	24	24	7,054	81%
Montgomery County Total		88	91	90	20,977	64%
Calvert County Prince George's County St. Mary's County	CalvertHealth Medical Center	8	15	9	3,073	94%
	MedStar Southern Maryland Hospital Center	25	28	25	6,357	70%
	University of Maryland Laurel Regional Hospital	16	10	8	4,881	167%
	University of Maryland Prince George's Hospital Center	28	30	28	7,947	78%
	MedStar St. Mary's Hospital	12	12	12	2,974	68%
Southern Maryland Total		89	95	82	25,232	84%
Anne Arundel County Baltimore City Baltimore County Carroll County Harford County Howard County	University of Maryland Baltimore Washington Medical Center	14	14	14	4,431	87%
	Bon Secours Hospital	24	29	29	6,000	57%
	Johns Hopkins Bayview Medical Center	20	20	20	9,238	127%
	MedStar Harbor*	26	26	26	888	9%
	MedStar Union Memorial*	-	26	26	7,620	80%
	Sinai Hospital of Baltimore	24	24	24	7,946	91%
	The Johns Hopkins Hospital	108	108	95	31,118	90%
	University of Maryland Medical Center	56	54	46	12,110	72%
	University of Maryland Medical Center Midtown Campus	28	28	28	7,789	76%
	MedStar Franklin Square Hospital	40	40	40	11,728	80%
	Northwest Hospital	37	37	32	10,518	90%
	University of Maryland St. Joseph Medical Center	18	19	19	6,108	88%
	Carroll Hospital Center	20	19	19	3,966	57%
	University of Maryland Harford Memorial Hospital	29	27	20	7,380	101%
	Howard County General Hospital	20	20	20	5,377	74%
Central Maryland Total		464	491	458	132,217	79%
Cecil County Dorchester County Wicomico County	Union Hospital of Cecil County	11	15	8	2,581	88%
	University of Maryland Shore Medical Center at Dorchester	24	24	15	4,253	78%
	Peninsula Regional Medical Center	13	13	13	3,740	79%
	Eastern Shore Total	48	52	36	10,574	80%
Maryland State Total		747	787	722	205,700	78%

*Sources: Licensed beds designated as psychiatric, Maryland Health Care Commission and Office of Health Care Quality, Acute General Hospital Licensed Bed Designation, FY 2018. Physical capacity and staffed beds, MHCC Supplemental Survey: Psychiatric Services Capacity, June 1, 2017. Patient Days, Health Services Cost Review Commission, Discharge Abstract, CY 2016. Staffed Occupancy is calculated as (patient days)/(staffed beds*365)

*MedStar Union Memorial transferred 26 Designated Psychiatric Beds to MedStar Harbor effective October 1, 2017

Table 34. Inventory and Utilization of Acute Psychiatric Beds at Private Psychiatric Hospitals: Maryland

Jurisdiction/Region	Private Special Hospital - Psychiatric	Beds, June 1, 2017			Patient Days CY2016	Staffed Bed Occupancy CY2016
		Licensed Beds	Physical Bed Capacity	Staffed Beds		
Washington County/ Western Maryland	Brook Lane Health Services	65	57	57	10,786	52%
Montgomery County/ Montgomery	Adventist Behavioral Health - Rockville	117	136	118	28,923	67%
Dorchester County/ Eastern Shore	Adventist Behavioral Health - Eastern Shore*	15	15	15	2,894	53%
Baltimore County/ Central Maryland	Sheppard Pratt Hospital	322	322	258	80,898	86%
Howard County/ Central Maryland	Sheppard Pratt at Ellicott City	92	92	78	22,333	78%

Sources: Licensed Beds, Office of Health Care Quality; Physical Capacity and Staffed Beds, Maryland Health Care Commission June, 2017 Survey; Psychiatric Service Capacity; Patient Days, Health Services Cost Review Commission, Discharge Database, CY2016.

Staffed Occupancy is calculated using the formula, (patient days)/(staffed beds*365).

*Adventist Behavioral Health - Eastern Shore temporary delicensed, 11/2016

Note: Staffed beds may fluctuate/change during the course of the surveyed year

Table 35. Inventory and Utilization of Psychiatric Beds at State Psychiatric Hospitals: Maryland, June 1, 2017

Jurisdiction/Region	State Psychiatric Special Hospitals	Beds, June 1, 2017						Patient Days FY2016	Staffed Bed Occupancy FY2016
		Licensed Beds	State Budgeted Beds	Physical Bed Capacity		Staffed Beds			
				Acute Care	Continuing Care	Acute Care	Continuing Care		
Allegany County	Thomas B. Finan Center	88	88	66	22	44	22	25,327	105%
	Western Maryland Total	88	88	66	22	44	22	25,327	105%
Baltimore County	Spring Grove Hospital Center	639	355	148	335	109	266	131,971	96%
Carroll County	Springfield Hospital Center*	522	228	100	130	91	129	84,600	62%
Howard County	Clifton T. Perkins Hospital Center	298	258	20	278	19	239	91,161	67%
	Central Maryland Total	1459	841	268	743	219	634	307,732	99%
Dorchester County	Eastern Shore Hospital Center	80	80	80	0	80	0	21,434	73%
	Eastern Shore Total	80	80	80	0	80	0	21,434	73%
	Maryland State Total	1627	1,009	414	765	343	656	354,493	105%

Source: Staffed beds and physical bed capacity: Maryland Health Care Commission Survey: Special Hospitals - Psychiatric, June 1, 2017; Licensed bed inventory, Office of Health Care Quality, DHMH; budgeted beds, patient days, Hospital Management Information System.

Staffed Occupancy is calculated using the formula, (patient days)/(staffed beds*365).

Note: Eastern Shore Hospital Center, effective 1/23/2018, is licensed for 84 beds



4160 Patterson Avenue
Baltimore, Maryland 21215
Telephone: (410) 764-3460
FAX: (410) 358-1236
Toll Free: 1 (877) 245-1762
TDD: 1 (800) 735-2258
<http://mhcc.maryland.gov>