



Hospice Education and Outreach Work Group

Maryland Health Care Commission

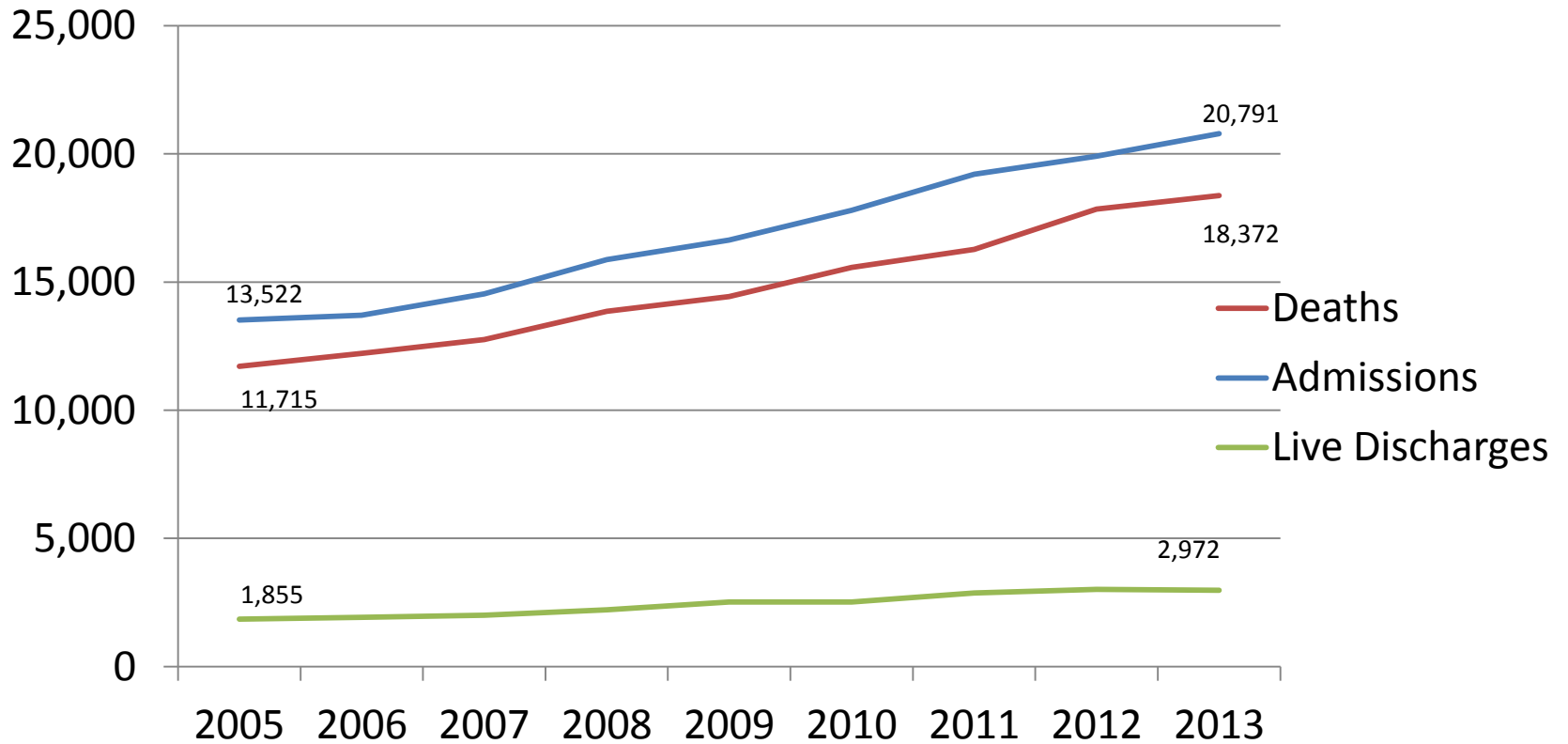
October 28, 2014

Linda Cole, MHCC

Review of Preliminary Baltimore City Hospice Meeting

- Themes:
 - There are substantive religious, cultural, and ethnic barriers to use of hospice
 - Presence of minority staff can improve trust building
 - Need for early hospice intervention—before crisis
 - Need to work with faith-based community
 - Physicians are reluctant to refer to hospice; lack of time for end of life discussions
 - There are myths to overcome, especially with respect to costs and eligibility for hospice benefits
- Recommendations for Programs:
 - Joint programs at senior centers and health fairs
 - Work with hospitals at Grand Rounds
 - Make presentations at churches

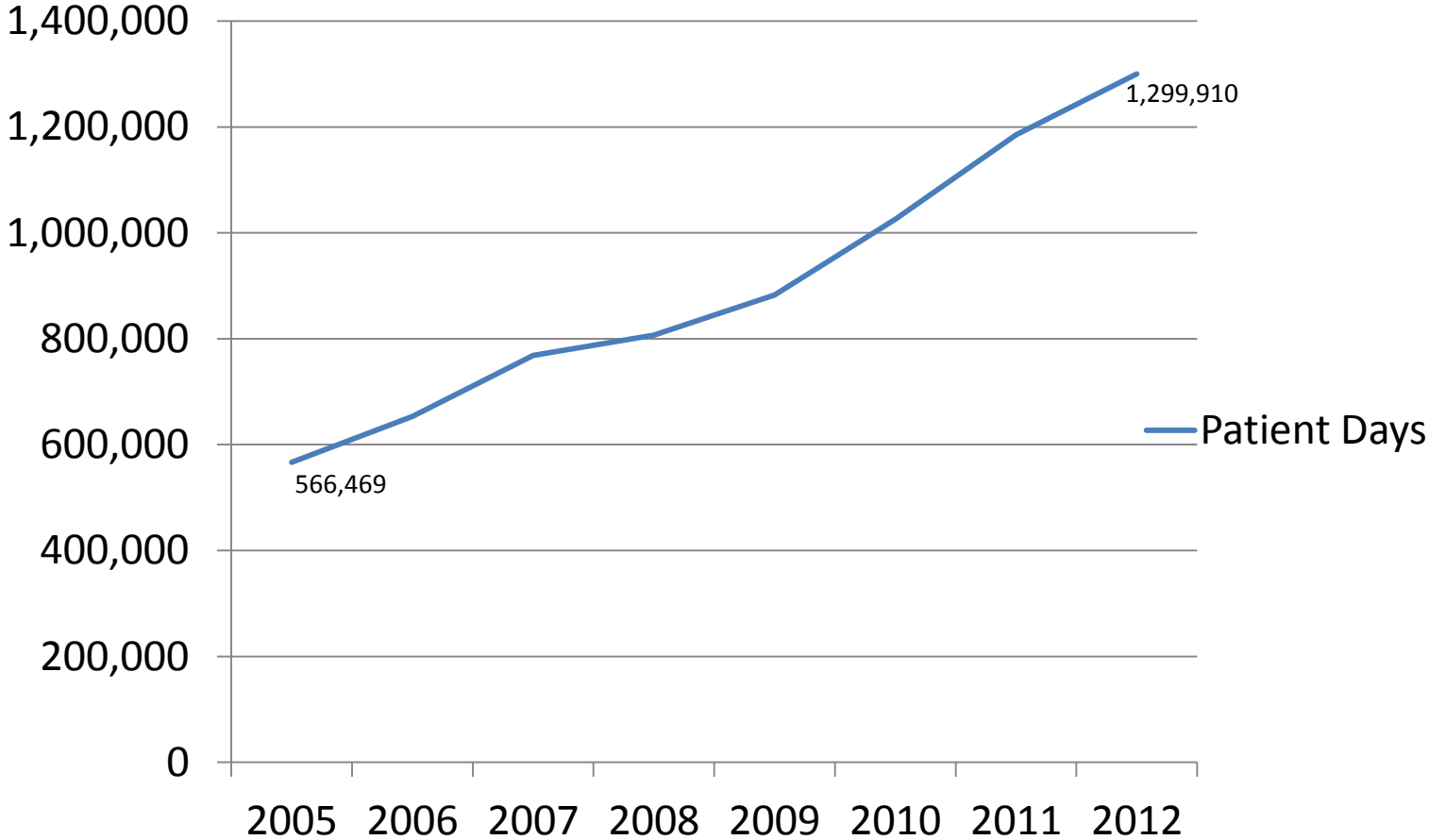
Trends in Maryland Hospice Utilization (FY2005-2013)



Source: Maryland Hospice Surveys (FY 2005-2013). Note: 2013 data is preliminary

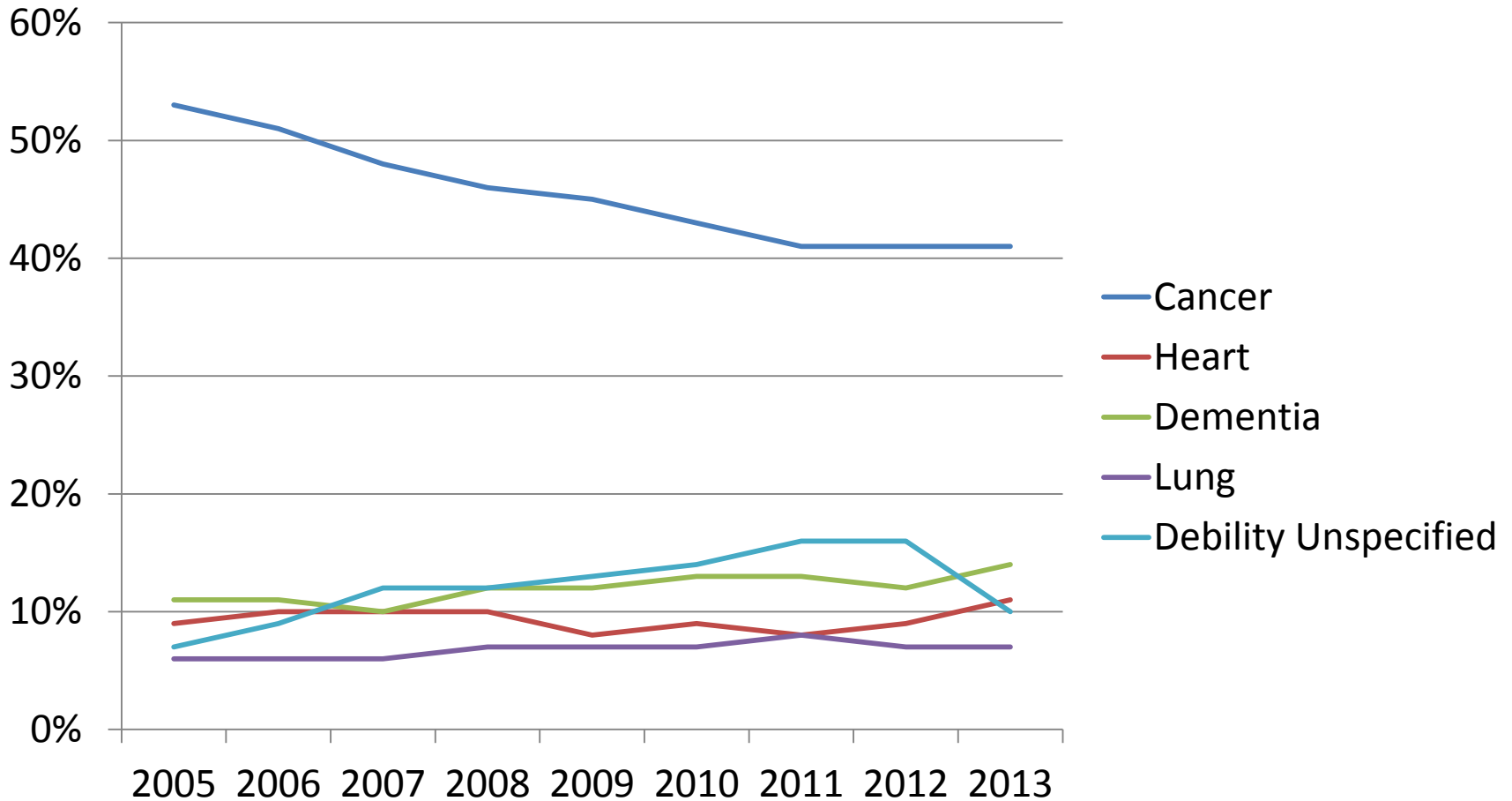
Trends in Maryland Hospice Patient Days (FY 2005-2012)

Patient Days



Source: Maryland Hospice Surveys. (FY 2005-2012)

Percent of Maryland Hospice Admissions by Diagnosis FY 2005-2013



Source: Maryland Hospice Surveys (FY 2005-2013). Note: 2013 data is preliminary

Maryland Hospice Use Rates (2007-2013)

Maryland Hospice Use Rates* (2007-2013)

Region	Jurisdiction	2007	2008	2009	2010	2011	2012	2013
Central Maryland	Anne Arundel	0.4	0.41	0.45	0.47	0.47	0.51	0.52
	Baltimore City	0.21	0.28	0.26	0.24	0.25	0.32	0.31
	Baltimore County	0.37	0.38	0.44	0.49	0.54	0.56	0.54
	Harford	0.34	0.33	0.36	0.42	0.41	0.49	0.47
	Howard	0.38	0.36	0.4	0.41	0.42	0.6	0.49
Eastern Shore	Caroline	0.31	0.22	0.28	0.27	0.18	0.24	0.22
	Cecil	0.37	0.44	0.32	0.5	0.54	0.54	0.46
	Dorchester	0.2	0.18	0.16	0.19	0.19	0.18	0.22
	Kent	0.2	0.27	0.28	0.33	0.31	0.36	0.34
	Queen Anne's	0.31	0.37	0.43	0.42	0.44	0.47	0.4
	Somerset	0.22	0.32	0.25	0.26	0.38	0.39	0.32
	Talbot	0.32	0.33	0.34	0.37	0.39	0.39	0.46
	Wicomico	0.3	0.37	0.36	0.43	0.44	0.43	0.45
	Worcester	0.27	0.27	0.32	0.36	0.42	0.46	0.42
	Montgomery	Montgomery	0.36	0.36	0.39	0.43	0.43	0.45
Southern Maryland	Calvert	0.31	0.38	0.33	0.37	0.35	0.37	0.37
	Charles	0.24	0.28	0.22	0.29	0.29	0.3	0.33
	Prince George's	0.2	0.23	0.22	0.24	0.22	0.26	0.26
	St. Mary's	0.45	0.43	0.36	0.43	0.47	0.48	0.41
Western Maryland	Allegany	0.19	0.2	0.21	0.19	0.22	0.24	0.18
	Carroll	0.43	0.48	0.5	0.5	0.53	0.54	0.52
	Frederick	0.3	0.26	0.3	0.34	0.34	0.37	0.47
	Garrett	0.27	0.23	0.28	0.27	0.3	0.25	0.25
	Washington	0.3	0.32	0.33	0.34	0.38	0.44	0.48

•Use rates are the ratio of 'All Hospice Deaths' to 'Population Deaths - Age 35+' to be consistent with the Hospice State Health Plan (COMAR 10.24.13)

•Source: Hospice Deaths-MHCC Annual Hospice Surveys. (2007-2013) Note 2013 data is preliminary. Pop. Deaths-MD Vital Statistics Administration Data (2007-2013, released 2014 with preliminary 2013 data.)

Hospice Use among Medicare Decedents, Baltimore/Washington Metro Jurisdictions, 2012

Jurisdiction	Race	Number of Medicare Decedents	Number of Hospice Users	Use Rate
Anne Arundel	African American	403	145	0.36
	White	2,668	1,268	0.48
Baltimore	African American	1,088	428	0.39
	White	4,863	2,386	0.49
Baltimore City	African American	2414	805	0.33
	White	1,971	814	0.41
Harford	African American	110	42	0.38
	White	1,409	685	0.49
Howard	African American	155	69	0.45
	White	759	410	0.54
Montgomery	African American	581	193	0.33
	White	3,686	1,640	0.44
Prince George's	African American	2,168	677	0.31
	White	1,303	523	0.40
Frederick	African American	75	23	0.31
	White	1,144	462	0.40

Minority Utilization of Hospice

Hospice Use Rates by Medicare decedents using hospice care, U.S.

Population	2000	2011	2012
Total	0.23	0.45	0.47
White	0.24	0.47	0.48
Minority	0.17	0.35	0.36

Source: MedPAC June 2014 Data Book: Health Care Spending and the Medicare Program, Chart 11-9

Themes from Literature

Barriers to hospice use:

- **Conflicting values with hospice philosophy**
- **Lack of information on hospice**
- **Concerns about burdening the family**
- **Financial access concerns**
- **Mistrust of the healthcare system**
- **Preference for caring for loved one at home**
- **Expectation that hospice employees would not be minority**
- **Hospice means “giving up”**

Sources of Hospice Data

- Maryland Hospice Survey: Public Use Data Set
- http://mhcc.maryland.gov/public_use_files/index.aspx
- Medicare Data: http://www.cms.gov/Research-Statistics-Data-and-Systems/Statistics-Trends-and-Reports/Medicare-Geographic-Variation/GV_PUF.html
- Med Pac Report: <http://medpac.gov/documents/publications/jun14databookentirereport.pdf?sfvrsn=1>
- National Hospice and Palliative Care Organization: <http://www.nhpco.org/>