

September 16, 2021

VIA EMAIL & U.S.P.S.

Ms. Ruby Potter
ruby.potter@maryland.gov
Health Facilities Coordination Officer
Maryland Health Care Commission
4160 Patterson Avenue
Baltimore MD 21215

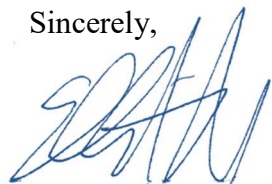
Re: MedStar Franklin Square
Establishment of Kidney Transplant Service
Matter Nos. 17-03-2405

Dear Ms. Potter:

On behalf of interested party University of Maryland Medical Center (“UMMC”), I am submitting four copies of UMMC’s Comments On Medstar Health, Inc.’s Updated Need Assessment For Its CON Application Proposing the Establishment of a Kidney Transplant Service at Medstar Franklin Square Hospital Center. A WORD version will also be provided to Commission Staff under separate email.

I hereby certify that a copy of this submission has been forwarded to the appropriate local health planning agencies as noted below. Thank you for your assistance.

Sincerely,



Ella R. Aiken



Alison J. Best

ERA/AJB:blr
Enclosures

#756197
006551-0239

Ms. Ruby Potter
September 16, 2021
Page 2

cc: Paul Parker, Director, Center for Health Care Facilities Planning & Development, MHCC
Wynee Hawk, Chief, Certificate of Need, MHCC
Suellen Wideman, Esq., Assistant Attorney General, MHCC
Jenelle Mayer, MPH, Health Officer, Allegany County
Nilesh Kalyanaraman, MD, Health Officer, Anne Arundel County
Letitia Dzirasa, MD, Health Commissioner, Baltimore City
Gregory Branch, M.D., Health Officer, Baltimore County Health Department
Laurence Polsky, M.D., Health Officer, Calvert County
Roger Harrell, MPH, MS, Health Officer, Caroline County
Edwin Singer, L.E.H.S., Health Officer, Carroll County
Lauren Levy, Health Officer, Cecil County
Roger L. Harrell, MHA, Health Officer, Dorchester County
Barbara Brookmyer, MD, MPH, Health Officer, Frederick County
Robert Stephens, MS, Health Officer, Garrett County
David Bishai, MD, Health Officer, Harford County
Maura Rossman, MD, Health Officer, Howard County
William Webb, MD, MPH, Health Officer, Kent County
Joseph Ciotola, MD, Health Officer, Queen Anne's County
Meenakshi Brewster, MD, MPH, Health Officer, St. Mary's County
Danielle Weber, MS, APRN/BC, LCADC, Health Officer, Somerset County
Maria A. Maguire, MD, Health Officer, Talbot County
Earl E. Stoner, MPH, Health Officer, Washington County
Lori Brewster, MS, APRN/BC, LCADC, Health Officer, Wicomico County
Rebecca Jones, RN, MSN, Health Officer, Worcester County
David C. Tobin, Esq.
Conor B. O'Croinin, Esq.
Thomas C. Dame, Esq.
Hannah L. Perng, Esq.

IN THE MATTER OF

MEDSTAR FRANKLIN SQUARE KIDNEY
TRANSPLANT SERVICE

Docket No. 17-03-2405

*
* BEFORE THE
*
* MARYLAND HEALTH
*
* CARE COMMISSION
*

* * * * *

**UNIVERSITY OF MARYLAND MEDICAL CENTER’S COMMENTS ON
MEDSTAR HEALTH, INC.’S UPDATED NEED ASSESSMENT FOR ITS
CON APPLICATION PROPOSING THE ESTABLISHMENT OF A KIDNEY
TRANSPLANT SERVICE AT MEDSTAR FRANKLIN SQUARE HOSPITAL CENTER**

University of Maryland Medical Center (“UMMC”), by its undersigned counsel and pursuant to COMAR § 10.24.01.08F, submits these comments addressing the July 9, 2021 Letter and related materials filed by MedStar Health, Inc. (“MedStar”) related to its Certificate of Need Application (“CON”) proposing to establish a kidney transplant service at Franklin Square Hospital Center d/b/a MedStar Franklin Square Medical Center (“MFSMC”) (hereinafter referred to as the “Updated Need Assessment”).

Introduction

The Commission should deny MedStar’s application to establish a kidney transplant service at MFSMC because the new national kidney allocation policy fundamentally undermines MedStar’s justification for a new program. Under the prior policy, programs in Baltimore had greater access to organs that became available in most Maryland counties than programs such as MedStar Georgetown Transplant Institute (“MGTI”), located in Washington, D.C., because they were in different Donation Service Areas (“DSA”).¹ The new allocation policy does not

¹ As discussed in prior comments filed in this matter, UMMC and JHH are in the Living Legacy Foundation DSA (“LLF”), which includes all of Maryland except Charles, Montgomery, and Prince George’s Counties. MGTI is located in Washington Regional Transplant Community

distribute kidneys based on DSAs, but rather based on fixed circles of 250 nautical miles (NM) drawn around the location where the organ becomes available. This puts programs in Baltimore and Washington, D.C. on equal footing in terms of organs that become available at area hospitals. As a result, MedStar does not need a program in Baltimore for MedStar and its patients to reap the benefits of any increase in available kidneys that MedStar proposes to achieve in the region.

MedStar has failed to present any revised analysis demonstrating need in light of the new policy in its Updated Need Assessment. In fact, despite the Reviewer's express direction to do so in his May 10, 2021 Ruling, MedStar has not updated its need assessment at all. Instead, MedStar largely chose to present selective statistics about its program at MGTI without providing sufficient information to demonstrate that it can replicate that success at MFSMC. Based on its submission, MedStar has failed to demonstrate need for its proposed program by showing how it would increase the use or supply of kidneys in Maryland. MedStar has also failed to justify the addition of a program in a well-served region based on supposed geographic access barriers, and fails to put forth supportable volume projections. As a result and as more specifically describe herein and in UMMC's initial Interested Party Comments, MedStar cannot demonstrate compliance with the applicable review standards, and its application should be denied.

("WRTC"), which includes Washington, D.C., the remaining Maryland counties, and several Virginia counties.

ARGUMENT

I. MEDSTAR STILL CANNOT DEMONSTRATE THAT ITS PROPOSAL TO ESTABLISH A KIDNEY TRANSPLANT SERVICE COMPLIES WITH THE NEED STANDARD, COMAR § 10.24.15.04B(1).

The State Health Plan Chapter for Organ Transplant Services, COMAR § 10.24.15 (the “State Health Plan Chapter”) provides that to establish need, a program must show that it can either increase the use, or increase the supply, of organs for transplant. COMAR § 10.24.15.04(B)(1). MedStar’s original CON application failed to demonstrate the need for a new program in the Maryland region. *See generally* UMMC October 15, 2018 Interested Party Comments. Despite the lack of support in its CON application and the changed allocation policy landscape, MedStar has offered no new data or arguments demonstrating the need for a third kidney transplant program in the Baltimore area. Accordingly, the Commission should deny MedStar’s Application.

A. MedStar Failed to Update its Need Assessment In Light of the New Allocation Policy and as Directed by Commissioner O’Grady.

On March 15, 2021, the Organ Procurement and Transplantation Network (“OPTN”) announced finalized changes to the national kidney allocation policy that significantly alter the way in which kidneys become available to transplant candidates across the nation. *See* OPTN Policy Notice, “Eliminate the Use of DSA and Region from Kidney Allocation Policy,” December 2019 (hereinafter referred to as the “Policy Notice”) p. 1. Under the previous policy, OPTN selected kidney transplant recipients primarily based on the region in which the recipient was located. The United States was divided into eleven organ allocation regions, which were further broken down into 50 distinct DSAs, each operated by an Organ Procurement organization that facilitated procurement and transplantation in the DSA. *See* COMAR § 10.24.15.03, p. 7;

Health Resources and Services Administration (“HRSA”) July 31, 2018 Letter to OPTN, p. 1. Most organs were offered to categories of recipients (based on acuity of illness and organ compatibility, among other factors), first within a DSA, then within a region, and then nationally. As a result, patients outside the geographic boundary of one DSA did not have the same access to an organ as a patient of a similar acuity level on the other side of the boundary.

OPTN’s new policy governing the allocation of kidneys for transplantation replaces distribution based on DSAs with a new model based on the distance between the donor hospital and transplant hospital. *See* Policy Notice, p. 1. In particular, the first unit of allocation for a kidney recipient is based on a 250 nautical mile (NM) fixed-distance circle with the donor hospital at its center.² Policy Notice, p. 2. If no candidate within the 250 NM radius accepts the organ, offers are made to candidates outside the circle on a national basis. *Id.* As a result of this new policy, transplant hospitals that were previously located within different DSAs may now each be included in the initial allocation unit for an available organ, if both are located within 250 NM of the donor hospital.

In his May 10, 2021 ruling, Commissioner O’Grady granted interested party status to UMMC and addressed UMMC’s pending motion to stay review of MedStar’s CON application based on OPTN’s forthcoming policy changes. Although Commissioner O’Grady declined to stay the review, the policy changed while the review was pending and he directed MFSMC to update its need assessment in light of the new kidney allocation policy. Commissioner O’Grady also directed MFSMC to update other parts of its application, including volume projections, that may have changed as a result of its updated need assessment.

² A nautical mile is slightly longer than a standard mile on land, equaling 1.1508 land miles. Thus, 250NM is equivalent to 287.7 land miles.

MedStar did not comply with Commissioner O’Grady’s ruling. It failed to update its need assessment and volume projections taking into consideration the new kidney allocation policy. Instead, it simply stated, “the new UNOS organ allocation policy has not changed the need for the proposed program as detailed in MFSMC’s previous filings.” Updated Need Assessment p. 1. Despite this assertion, the new policy’s changes to the geographic boundaries in which organs become available render MedStar’s need analysis moot and fundamentally undermine its arguments in support of a new Baltimore area program. The location of MedStar’s existing program at MGTI in the WRTC DSA was central to MedStar’s initial justification for its proposed program at MFSMC because Baltimore-area programs are located in a different DSA. MedStar no longer needs to establish a program at MFSMC because the artificial geographic boundaries of DSAs no longer govern kidney allocation. Instead, transplant hospitals located within a 250 NM radius of a donor hospital now each have access to an available kidney, even if the hospitals were previously part of different DSAs. Patients waitlisted at MGTI, for example, now have the same access to organs as patients listed at UMMC and Johns Hopkins Hospital (“JHH”), due to the geographic proximity of the three centers. In short, MedStar does not need to establish a transplant program in Baltimore in order for its patients to benefit from organs that become available in the area.

B. MedStar Does Not Need a New Program to Increase the Supply of Kidneys for Patients Served in Maryland.

MedStar states that the goal of its proposed MFSMC program “is to increase the supply of available organs and thus the number of transplants received by local Maryland patients.” Updated Need Assessment, p. 1. MedStar claims that by establishing a new program at MFSMC, it could increase the supply of donor organs in Maryland by expanding efforts already in place at

MGTI. *See* MedStar CON Appl. pp. 43-58. In its CON application, MedStar further suggested that “the creation of a kidney transplant program at MFSSMC [would serve] to focus greater attention on organ donation at its Baltimore-area hospitals and in the identification and retrieval of more organs.” MedStar CON Appl. p. 44. MedStar has failed, however, to explain why MGTI could not focus its initiatives on Baltimore-area donors through its extensive presence in the region without having a program physically located in the area, particularly in light of OPTN’s new allocation policy.

Under the previous kidney allocation policy, which prioritized allocation based on location within a DSA, efforts undertaken by MedStar in the Baltimore region may not have increased available organs for patients listed at MGTI because MGTI was located in a DSA that did not include the Baltimore area. Instead, organs that became available at Baltimore area hospitals may have first gone to patients listed at UMMC or JHH based on their location in the DSA including most of Maryland. MedStar arguably had less of an incentive, therefore, to actively engage in donor outreach in the Baltimore region without having a program of its own in the area. Under the new policy, however, any efforts that MedStar takes to increase the supply of kidneys in the Baltimore area will likely benefit its MGTI patients to the same degree as they would benefit patients listed at the proposed MFSSMC program. Due to the geographic proximity of MGTI and MFSSMC, and because DSAs no longer control kidney allocation priority, if a kidney became available in the Baltimore area, the initial 250 NM allocation circle would encompass patients listed at either MGTI or MFSSMC. Assuming MedStar could even successfully increase kidney supply in the Baltimore area by expanding its MGTI outreach initiatives, it does not need to establish a new kidney transplantation center in Baltimore for its patients to benefit from those efforts.

MedStar also originally supported its need analysis by arguing that many of the patients listed at MGTI live in the Baltimore region, so by establishing a program in the Baltimore area, such patients could benefit from dual listings in two DSAs. MedStar CON Appl. at 65. MedStar's arguments regarding the benefit of dual listings in neighboring DSAs no longer hold any force due to OPTN's removal of DSAs as the primary unit of kidney allocation. Patients may now benefit from organs that become available in the Baltimore region regardless of whether they are listed at MGTI or one of the existing Baltimore-area programs. Patients in need of transplant will also receive no added benefit or increased access to organs by listing at multiple programs within the same 250 NM radius under the new allocation policy. In short, a MedStar patient listed at MGTI will have the same access to a kidney that becomes available in Baltimore as a patient listed at UMMC would have.

C. MedStar Has Not Demonstrated that its Proposed Program Would Increase the Supply of Kidneys for Patients Served in Maryland.

Even if the OPTN policy had not eliminated the DSA model for organ allocation, MedStar's proposed program at MFSMC would still be unnecessary because the existing Baltimore area programs are already engaged in efforts to increase donor kidney supply. UMMC has made substantial efforts in recent years to expand its outreach and education efforts targeting potential donors by establishing a number of satellite clinics throughout the state. In particular, UMMC has targeted the Eastern Shore region, establishing satellite clinics in Easton and in partnership with TidalHealth (formerly known as Peninsula Regional Medical Center). UMMC has also identified additional opportunities to expand its outreach efforts in Southern Maryland by establishing satellite programs in Bowie and in the town of La Plata. An additional clinic is planned in the UM Capital Region Medical Center, which will focus on increasing living

donation for both liver and kidney transplantation. Overall, UMMC's satellite clinics provide targeted patient education in order to facilitate increased organ donation by both living and deceased donors.

MedStar's contention that a new kidney transplantation program at MFSMC is necessary to increase the supply of living donor organs in Maryland is also unsupported. UMMC engages in targeted efforts to increase the supply of living donors in Maryland. UMMC recognizes that donor champion education has been shown to increase organ supply through living donation. *See, e.g., Garonzik-Wang, et al., Live donor champion: finding live kidney donors by separating the advocate from the patient, 93(11) TRANSPLANTATION 1147 (Jun. 15, 2012).* Accordingly, over the last two years, UMMC has dedicated significant time and resources to its Living Donor Champion Program. This Program focuses on educating patients about the benefits of living donation, and offers educational sessions to all listed and non-listed patients in Maryland. UMMC's transplant coordinators also share the Program's recorded webinars with all patients under evaluation. UMMC has achieved significant monthly attendance to the Program's educational sessions, and the Program has already demonstrated increased levels of patient satisfaction and education. JHH is also a leader in living donor education, and is currently engaged in clinical research studying the success of its program with the goal of developing an educational model that can be implemented nationwide. *See Johns Hopkins University, Implementation of the Live Donor Champion Program (LDC), Identifier NCT03445510 (May 30, 2018- December 2023), available at <https://clinicaltrials.gov/ct2/show/record/NCT03435510>.* These targeted educational efforts regarding living donation will continue to increase the number of living donors in Maryland

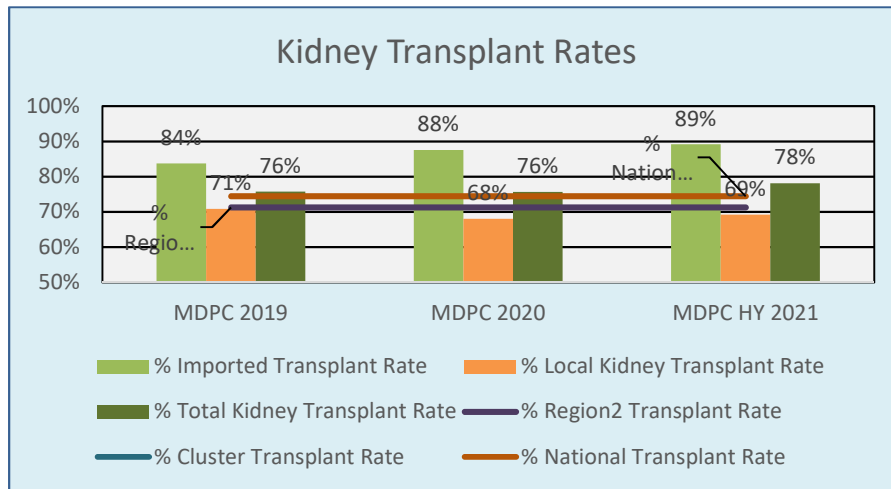
Despite the successful donor outreach initiatives implemented throughout the state of Maryland by UMMC and JHH, MedStar broadly contends that because its proposed MFSMC program would be affiliated with MGTI, “MFSMC will emulate MGTI’s success in increasing the available supply of donor organs.” Updated Need Assessment, p. 2. MedStar, however, failed to offer any concrete support in its original CON Application as to how it would replicate the success of MGTI at MFSMC, and why its efforts in the Baltimore area would have greater success than two programs already familiar with, and actively engaged in, education and other efforts to increase donor supply in Baltimore area communities. MedStar chose not to provide any additional specificity in its Updated Need Assessment. The Commission should deny MedStar’s application because MedStar has not provided any evidence that would show its proposed program is necessary or even able to increase the supply of available kidneys in Maryland. Furthermore, as noted above, under the new allocation policy, Medstar could implement outreach efforts in the Baltimore area and perform any resulting transplants at MGTI.

D. MedStar Has Not Demonstrated that its Proposed Program Would Increase the Use of Kidneys for Patients Residing in Maryland.

The Commission should deny MedStar’s application because it cannot demonstrate that its proposed program at MFSMC would increase the use of kidneys in Maryland. The existing Baltimore-area programs already utilize available kidneys effectively, as evidenced by the high import rate and low discard rate for kidneys in the region. As a result, MedStar cannot meet its burden of establishing that the addition of a third program in the region would result in any increased use of available organs.

Table 1 below demonstrates that the existing Baltimore programs import a high number of kidneys for transplantation at rates well above the national average.

Table 1
Kidney Transplant Rates
2019-2021



Source: Living Legacy Foundation of Maryland

Notes: This chart reflects data maintained by the LLF OPO. “Region 2” includes the states of Delaware, Maryland, New Jersey, Pennsylvania, and West Virginia, and Washington, D.C. The acronym “MDPC” refers to UMMC and JHH. “Local” also refers to UMMC and JHH. See Exhibit 1 for additional information regarding the data displayed in this chart.

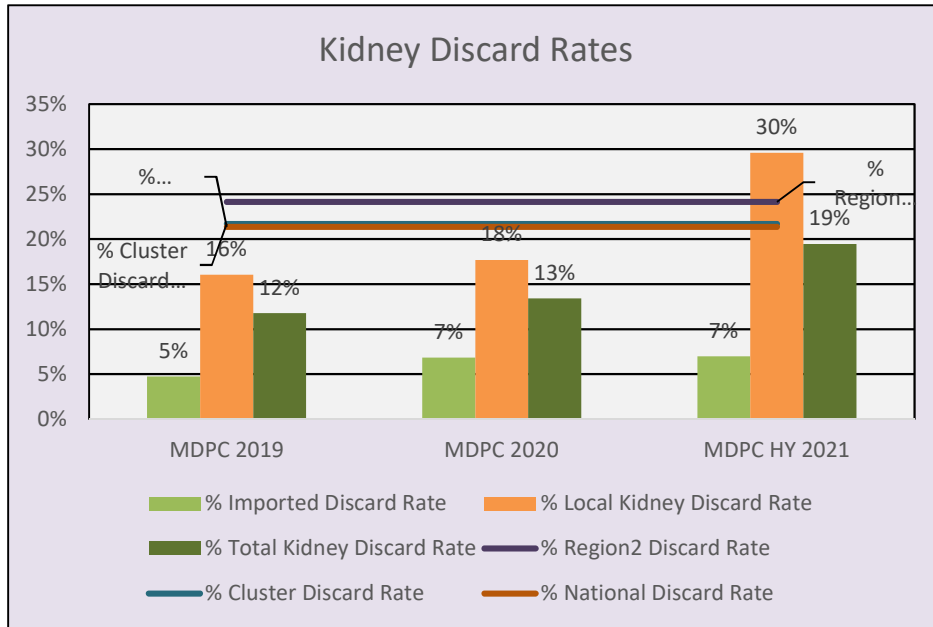
Since 2019, UMMC and JHH have reported imported kidney transplant rates of at least 13% higher than the national average. The imported transplant rate has also steadily increased from the beginning of 2019 to the present. This high imported kidney transplant rate indicates that the existing Baltimore-area programs currently make effective use of all kidneys that become available to their patients, regardless of where the organs originate. It further indicates that to meet the demand for transplants in the region, the existing programs must use organs from outside the Maryland OPO. Given the already high use rates of imported kidneys in the Baltimore region, establishing a third program at MFSSMC would be unlikely to result in increased use overall. Rather, it would only further strain the supply of organs available for patients of Maryland’s existing programs.

In addition to their high import percentage of kidneys for transplant, the two existing Baltimore programs also import organs that Washington, D.C.-area programs have declined or cannot use. According to data gathered from the LLF, the WRTC OPO, which includes MedStar's program at MGTI, has exported a total of twenty-two kidneys for transplant by UMMC or JHH since 2019. *See Exhibit 2.* Notably, the OPO had already exported eight kidneys for transplant to an existing Baltimore center between January 1, 2021 and June 30, 2021. *Id.* MedStar argues that it needs to expand its program at MGTI to MFSMC in order to increase the use of available organs in the Maryland region. Updated Need Assessment, p. 1. These import data indicate, however, that the existing Maryland programs are already receiving and using organs from the Washington, D.C. region that programs in that region, including MGTI, declined. With the existing Maryland programs currently using organs that MGTI's OPO rejects, MedStar's suggestion that an expansion of its MGTI program to the Baltimore region is necessary to increase transplants to Maryland patients lacks merit.

In addition to high import transplant rates overall, the existing Maryland programs also have low kidney discard rates, especially for imported kidneys.³ As shown in Table 2 below, UMMC and JHH have discarded only 5-7% of imported kidneys since the beginning of 2019, compared to a national discard rate of over 20%.

³ Kidneys may be discarded for a number of reasons, including, for example, because they are unsuitable for the target patient, the recipient declines the offer, an anatomical abnormality is present in the organ, or due to poor organ function or quality.

Table 2
Kidney Discard Rates
 2019-2021



Source: Living Legacy Foundation of Maryland

Notes: This chart reflects data maintained by the LLF OPO. “Region 2” includes the states of Delaware, Maryland, New Jersey, Pennsylvania, and West Virginia, and Washington, D.C. The acronym “MDPC” refers to UMMC and JHH. “Local” also refers to UMMC and JHH. See Exhibit 3 for additional information regarding the data displayed in this chart

This low imported kidney discard rate demonstrates that the existing programs in Maryland make highly effective use of kidneys imported to the region for transplant. These data also indicate that the local supply of kidneys is insufficient to support a third program in the state, particularly given that UMMC and JHH already discard a lower percentage of organs than the average program. Because the existing Baltimore programs use almost all of the kidneys that become available for their Maryland patients, including organs rejected by Washington, D.C. area programs, MedStar cannot show that its proposed program at MFSMC is needed to increase organ usage. Furthermore, to the extent that additional kidneys become available in Maryland, the existing Baltimore-area programs have capacity to perform additional transplants. Adding

another kidney transplant program to the region would unnecessarily deplete the available organs that existing Baltimore programs have already proven they can effectively use.

E. MedStar Does Not Need a New Program to Meet the Transplant Needs of Minority Populations in Maryland.

MedStar argues that the new kidney allocation policy has had no negative impact on the need for its proposed program at MFSMC because its outcomes meet or exceed national outcomes, “despite MGTI’s increasing percentage and total volume of transplants proposed in minority populations.” Updated Need Assessment, p. 2. Throughout its updated Need Assessment, MedStar suggests that because it has performed transplants on increasing numbers of minority patients over recent years, its proposed program at MFSMC is necessary to promote the use of donor organs in minority communities within the Maryland region. Updated Need Assessment p. 2, 6–7. This position is unsupported by the data.

UMMC falls well above the national *and* regional averages for its percentage of Black kidney transplant recipients, as demonstrated in Table 3 below.

Table 3
Composition of UMMC Kidney Transplant Recipients 5/2020 to 4/2021 by Ethnicity

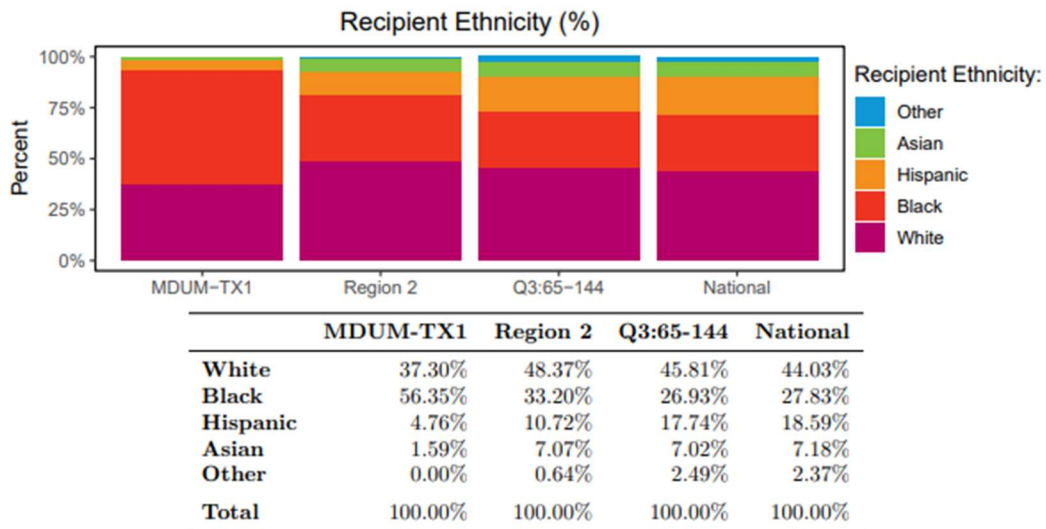


Figure 2 displays the distribution of age and ethnicity for all recipients of kidney transplants performed between May 1, 2020 and April 30, 2021. While 37.88% kidney transplants nationally were performed on recipients ages 50-64, 24.43% were performed on recipients 35-49 years old. Overall, the majority of kidney transplants were performed on White recipients, followed by Black, Hispanic, and Asian recipients. Other ethnic recipients accounted for 2.37% of kidney transplants.

Source: SRTR

Notes: MDUM is SRTR’s abbreviation for UMMC. Region 2 includes Delaware, Maryland, New Jersey, Pennsylvania, and West Virginia, and Washington, D.C. Q3:65-133 indicates days 65-144 of CY 2021.

In fact, UMMC provided more transplants to Black patients than any other ethnicity during the period between May 1, 2020 and April 30, 2021. UMMC also exceeds the national average for minority composition of its waitlist.

Table 4
Composition of Candidates on the UMMC Kidney Waitlist as of June 30, 2021

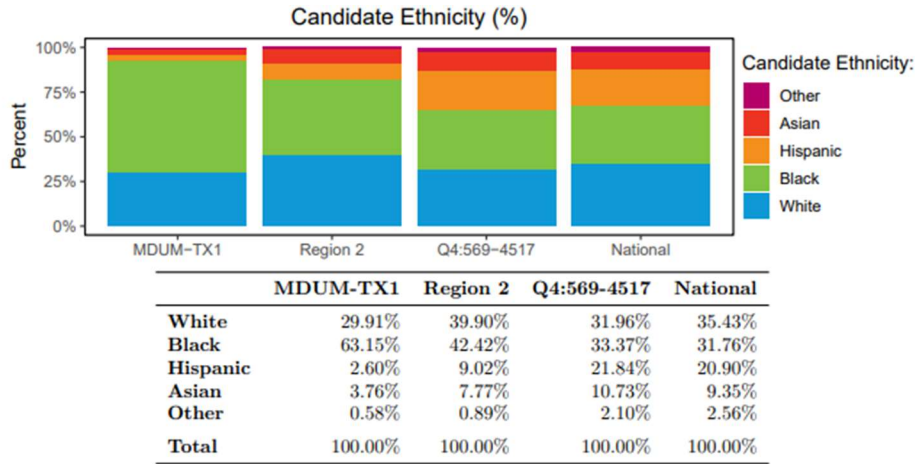


Figure 2 displays the distribution of age and ethnicity for all kidney candidates waiting on June 30, 2021. While 42.94% of candidates waiting nationally were 50-64, 25.01% were 65+ years old. Overall, White candidates were the majority, followed by Black, Hispanic, and Asian candidates. Nationally, Other ethnic groups accounted for 2.56% of the waiting list.

Source: SRTR

Notes: MDUM is SRTR’s abbreviation for UMMC. Region 2 includes Delaware, Maryland, New Jersey, Pennsylvania, and West Virginia, and Washington, D.C.

When compared with MGTI, UMMC outperforms MGTI in the rate of new waitlist registrations for African American patients. As demonstrated by the tables below, 55% of UMMC’s new waiting list registrations in 2020 were African American, compared with only 42.6% of those at MGTI.

Table 5
UMMC Demographic Characteristics of Waiting List Candidates Registered Between 01/01/2020 and 12/31/2020

Demographic Characteristic	New Waiting List Registrations 01/01/2020 to 12/31/2020 (%)			All Waiting List Registrations on 12/31/2020 (%)		
	This Center (N=180)	OPTN Region (N=4,424)	U.S. (N=37,653)	This Center (N=783)	OPTN Region (N=12,233)	U.S. (N=97,493)
All (%)	100.0	100.0	100.0	100.0	100.0	100.0
Ethnicity/Race (%)*						
White	38.3	47.6	42.0	30.3	39.8	35.2
African-American	55.0	34.6	28.4	62.5	43.6	32.0
Hispanic/Latino	3.3	9.7	19.7	2.3	8.5	21.1
Asian	2.8	7.7	8.2	4.1	7.4	9.9
Other	0.6	0.4	1.8	0.9	0.6	1.8
Unknown	0.0	0.0	0.0	0.0	0.0	0.0

Source: SRTR PSR for UMMC, Kidney Program, Release Date July 6, 2021, Table B2.

Table 6
 MGTI Demographic Characteristics of Waiting List Candidates
 Registered between 01/01/2020 and 12/31/2020

Demographic Characteristic	New Waiting List Registrations 01/01/2020 to 12/31/2020 (%)			All Waiting List Registrations on 12/31/2020 (%)		
	This Center (N=319)	OPTN Region (N=4,424)	U.S. (N=37,653)	This Center (N=758)	OPTN Region (N=12,233)	U.S. (N=97,493)
All (%)	100.0	100.0	100.0	100.0	100.0	100.0
Ethnicity/Race (%)*						
White	37.9	47.6	42.0	25.6	39.8	35.2
African-American	42.6	34.6	28.4	56.9	43.6	32.0
Hispanic/Latino	7.8	9.7	19.7	7.5	8.5	21.1
Asian	11.6	7.7	8.2	9.8	7.4	9.9
Other	0.0	0.4	1.8	0.3	0.6	1.8
Unknown	0.0	0.0	0.0	0.0	0.0	0.0

Source: SRTR PSR for MGTI, Kidney Program, Release Date July 6, Table B2.

Despite MedStar’s contention that a new program at MFSMC is necessary to increase use of donor organs in minority communities, UMMC continues to serve a higher rate of African American patients than MGTI.

UMMC’s minority transplant patients also receive high quality care and experience positive outcomes. When compared with white transplant recipients during the period from 2017 to July 2021, UMMC’s Black transplant recipients experienced a lower rate of death.

Table 7
 UMMC Outcomes by Ethnicity 1/1/17- 7/1/2021

Ethnicity	Patient Volume	%Graft Failure	% Death*
Black	432	6%, N=27	5%, N=22
White	337	1.5%, N=5	7%, N=25
Asian	22	0	13%, N=3
Hispanic	30	0	13%, N=4
Multiracial	3	0	0
Pacific Islander	1	0	0
Total	825	4%, N=32	7%, N=54

Source: United Network for Organ Sharing, Data Services Portal

Notes: This data was drawn from UNOS Data Services, and reflects outcomes for patients who received both living and deceased donor kidneys during the period beginning January 1, 2017 and ending July 1, 2017.

*This data does not differentiate death with a functioning or failed graft.

MedStar’s suggestion that it needs to establish a Baltimore program to ensure minority patients have access to quality care lacks merit, as evidenced by these data.⁴

MedStar has not demonstrated that its proposed program at MFSMC is needed to increase the supply or use of organs in minority patients. The Commission should therefore deny MedStar’s application as failing to satisfy the applicable need criteria.

II. MEDSTAR FAILS TO DEMONSTRATE THAT THE LACK OF A THIRD KIDNEY TRANSPLANT PROGRAM IN THE BALTIMORE REGION IS A BARRIER TO ACCESS FOR PATIENTS, COMAR § 10.24.15.04B(3).

An applicant such as MedStar that seeks to add additional kidney transplantation services in a region with existing programs “on the basis of barriers to access” must “present evidence to demonstrate that barriers to access exist, based on studies of validated sources of information,” in addition to other requirements. COMAR § 10.24.15.04B(3). In its initial need assessment, MedStar argued that its “distance from Baltimore is a geographical challenge for many MedStar Health patients who live in the Baltimore Area.” MedStar CON Appl. p. 59. MedStar reinforced this argument in its Updated Need Assessment, stating in closing that a new program at MSFMC

⁴ UMMC is also actively engaged in clinical research that aims to improve outcomes after kidney donation and kidney transplantation for patients of African descent. In particular, UMMC was selected as one of the “Network Hubs” in the NIH-funded APOLLO national observational study, which follows kidney donors and recipients to determine the impact of the apolipoprotein L1 (APOL1) gene on transplant outcomes. *See Freedman, Barry I. & Moxey-Mims, Marva. The APOL1 Long-Term Kidney Transplantation Outcomes Network-APOLLO.* 13 CLIN J AM SOC NEPHROL. 940 (Jun. 7, 2018). The APOL1 gene almost exclusively affects individuals of recent African ancestry, and researchers hypothesize that the gene may contribute to racial disparities in kidney transplant outcomes. The Principal Investigators in the study initially hoped to involve all of the transplant programs in the United States in this study. *Id.* To date, over 200 of the nation’s transplant programs have participated, including almost all of the centers in close geographic proximity to UMMC. As a Network Hub, UMMC has also worked to engage regional centers in the study. Despite the potential long-term impact this study may have on improving racial disparities in kidney transplant outcomes, MGTI is conspicuously absent from the list of participating centers.

“obviate[es] the need for patients to travel outside of the area or change health systems” to receive transplant services in Maryland.

The State Health Plan Chapter provides that drive time of less than three hours one-way does not constitute a barrier to accessing care. COMAR § 10.24.15.04B(3). Accordingly, the geographic distance between MedStar’s existing MGTI program and its patients who reside in Maryland is not a true barrier to transplant care for those Maryland patients. In fact, this very point was recently acknowledged in the recommended denial of Suburban Hospital’s CON Application to establish a liver transplant service in Washington, D.C. *See* MHCC Suburban Hospital CON Recommended Decision (Sept. 25, 2020), p. 27. After discussing the three-hour drive time standard for access under the State Health Plan Chapter, the Reviewer concluded that the three existing transplant programs in the combined Washington Region and Maryland region DSAs (UMMC, JHH, and MGTI) “are accessible in terms of drive time for residents in both the regions, under this drive time standard.” *Id.* The Reviewer further noted, “[b]ased simply on this provision, there is no need to establish a [new] program.” *Id.* As the Commission determined in its review of the Suburban application, MedStar cannot demonstrate any reason why its Maryland patients cannot access kidney transplant services through its system by traveling to MGTI. Instead, the true driving force behind MedStar’s proposed program in the Baltimore region appears to be the desire to retain its patients in its System by providing a more convenient location for care. *See* Updated Need Assessment pp. 2-3. Convenience for patients is not a permissible justification of need under the State Health Plan Chapter, and the Commission should reject these arguments.

III. MEDSTAR HAS NOT DEMONSTRATED THAT IT CAN MEET THE MINIMUM VOLUME PROJECTIONS REQUIRED UNDER THE STATE HEALTH PLAN, COMAR § 10.24.15.04B(2).

In addition to establishing need for a proposed transplant program, an Applicant must also demonstrate that its service can generate the minimum annual case volumes set forth in the State Health Plan Chapter during its first three years of operation and that it will likely maintain those minimum volumes in subsequent years. COMAR § 10.24.15.04B(2). Although MedStar estimated in its original CON Application that its proposed program would generate sufficient volumes to meet the threshold requirements of the State Health Plan Chapter, those volume projections are outdated and unsupported by current data. Furthermore, MedStar proposes to establish a low-volume program at MFSMC, despite that UMMC and JHH, two high-volume kidney transplant programs, already exist in the Baltimore region. If approved, MedStar's proposed MFSMC program would merely shift volumes away from these existing Baltimore programs, as opposed to generating new volumes. MedStar failed to update its volume projections to accurately account for these case shifts, and it declined to revise its overall estimates in light of OPTN's new kidney allocation policy. As a result, MedStar cannot demonstrate that it can meet the minimum volume requirements required by the State Health Plan.

MedStar does not dispute that its proposed program at MFSMC will result in low volumes. MedStar CON Appl. at 64. MedStar originally projected that the MFSMC program would transplant 44 kidneys per year at full occupancy, *Id.* It further estimated that creation of a new program at MFSMC would shift a total of ten cases per year from the two existing Baltimore area programs. *Id.* at 60. These estimates, MedStar noted, were based on the number of MedStar patients referred to an existing Maryland program for advanced liver disease

evaluation, because the MedStar system does not maintain data on referrals outside the system for kidney transplant procedures. *Id.* Although based on outdated and irrelevant liver disease referral data from FY 15 and FY 16, MedStar chose not to update its volume projections in any way in its Updated Need Assessment.

MedStar significantly underestimates the number of cases that its proposed program at MFSMC would shift from UMMC. Based on data maintained by UMMC, UMMC has received 135 patient referrals from MedStar-affiliated nephrologists since 2015.⁵ Of these referred patients, UMMC has performed transplants on 65. UMMC has transplanted, on average, ten MedStar-referred patients each year from 2015 through 2020. So far, through July 2021, UMMC has transplanted three MedStar-referred patients and has added five to the UMMC waitlist. Despite these calculations, MedStar suggests that it will only shift an average of ten cases per year *total* from UMMC and JHH combined. MedStar’s outdated volume projections are inconsistent with historic referral trends to UMMC, particularly in light of the fact that MedStar has not demonstrated that it can increase the supply or use of donor kidneys by establishing a new program at MFSMC. *See supra* Sections I.A – I.C.

In addition to shifting volumes away from the existing Baltimore programs, MedStar’s proposed low-volume program directly contradicts the stated policy goals of the State Health Plan Chapter on Organ Transplantation. The State Health Plan recognizes that “organ transplantation is a specialized tertiary level health service that requires clinical expertise” and that “for specialized services, the public is best served if a limited number of general hospitals provide specialized services to a substantial population base.” COMAR § 1.24.15.03, p. 8.

⁵ This information is based on data reviewed by Daniel G. Maluf, M.D., Director of Program in Transplantation, whose affirmation is attached to these comments.

Moreover, the State Health Plan recognizes that not only should organ transplants be provided by a limited number of programs, but higher volume programs often correlate to better patient outcomes because they ensure that programs have sufficient caseload to maintain clinical expertise. *Id.* at pp. 8-16.

Substantial research supports a strong correlation between increased program competition and negative patient outcomes, and higher-volume programs with positive patient outcomes. Market competition has been associated with increased patient mortality, graft failure, and use of riskier kidneys. *See* Adler, Joel, *et al.*, *Market Competition Influences Renal Transplantation Risk and Outcomes*, 260 ANNALS OF SURGERY 550, Sept. 2014. Higher transplant center volumes also correlate to better graft and patient survival. *See* Tsampleros, Anne, *et al.*, *Center Variation and the Effect of Center and Provider Characteristics on Clinical Outcomes in Kidney Transplantation: A Systemic Review of the Evidence*, CAN J KIDNEY HEALTH DIS. 2017. Similarly, studies have found an association between more provider experience plus higher center volumes and less allograft loss and lower risk of patient death. *Id.*; Contento, Marissa, *et al.*, *Center Volume and Kidney Transplant Outcomes in Pediatric Patients*, 2 KIDNEY MEDICINE 297 (May-June 2020) (concluding transplant outcomes are worse in pediatric patients treated at lower-volume centers). This research demonstrates the risks associated with establishment of a low-volume kidney transplantation program, particularly one that would increase competition in the region.⁶ Accordingly, not only is MedStar's proposed MFSMC program unnecessary, but it may even negatively affect patient outcomes if approved.

⁶ Notably, MedStar itself has recognized the negative impact that the addition of a low-volume program in a well-served area may have on patient outcomes. *See generally* Interested Party Comments on behalf of MedStar Georgetown University Hospital in Suburban Hospital CON, Docket No. 17-15-2499 (April 30, 2018). In opposing Suburban Hospital's CON

A Commissioner Reviewer recently recommended denial for a similar proposed low-volume program organ transplant program, finding that it was not necessary to increase the use or supply of donor organs. The September 25, 2020 recommended denial of Suburban Hospital's proposed liver transplantation program concluded:

Suburban Hospital failed to demonstrate that its proposed program is necessary to increase the supply or use of donor livers, or that there is a barrier to access that its liver transplantation service would remedy. Suburban projects to transplant 46 cases annually at maturity – 29 of which would not be new volume but cases that would be shifted from one of the three existing programs – at an annual cost of \$11.6 million. Suburban's proposed liver transplant service is simply not needed because there are currently three high-performing existing liver transplantation services within geographic accessibility to the population. The applicant projects to grow the market by 10 liver transplant cases per year, if its application were approved. This additional volume could be absorbed by existing providers and does not justify creating an entire new liver transplant center at an annual expense of \$11.6 million.

MHCC Suburban Hospital CON Recommended Decision (Sept. 25, 2020) p. 3. Although the Suburban decision related to a different type of organ, it was based on the same State Health Plan Chapter.

The Commission should apply the same rationale here. MedStar has failed to justify the need for a new, low-volume kidney transplant program at MFSMC. It has not established how it would increase the supply of organs in the Baltimore Region, particularly in light of OPTN's new kidney allocation policy, which undermines all of its original arguments in support of its need analysis. MedStar has also been unable to show how its proposed program would result in increased use of organs in a region that already has two high-volume programs with above-average import rates and extremely low discard rates of available kidneys. In short, MedStar

Application to establish a liver transplantation program, MedStar argued, “[s]cientific literature and actual experience do not support the claim that increased competition leads to increased numbers of transplants and improved patient survival.”). *Id.* at 2.

cannot meet the need criteria for establishment of a new kidney transplant program in the Baltimore region.

Conclusion

For the reasons set forth above, UMMC respectfully asks that the Commission deny MedStar’s Application proposing to establish a kidney transplant program at MedStar Franklin Square Medical Center.

Respectfully submitted,



Thomas C. Dame
Ella R. Aiken
Alison J. Best
Gallagher Evelius & Jones LLP
218 North Charles Street, Suite 400
Baltimore MD 21201
(410) 727-7702

Attorneys for University of Maryland Medical Center

September 16, 2021

Table of Exhibits

Exhibit	Description
1	Living Legacy Foundation of Maryland Kidney Transplant Rates Summary
2	Living Legacy Foundation of Maryland Organ Imports Report and Local Organ Disposition Report 2019-2021
3	Living Legacy Foundation of Maryland Kidney Discard Rates Summary

CERTIFICATE OF SERVICE

I hereby certify that on the 16th day of September 2021, a copy of University of Maryland Medical Center's Comments On Medstar Health, Inc.'s Updated Need Assessment For Its CON Application was sent:

via email and first-class mail to

Suellen Wideman, Esq.
Assistant Attorney General
Maryland Health Care Commission
4160 Patterson Avenue
Baltimore MD 21215-2299
suellen.wideman@maryland.gov

Conor B. O'Croinin, Esq.
Zuckerman Spaeder LLP
100 E. Pratt Street, Suite 2440
Baltimore MD 21202-1031
cocroinin@zuckerman.com

David C. Tobin, Esq.
Jennifer Concino, Esq.
Tobin, O'Connor & Ewing
5335 Wisconsin Ave. NW Suite 700
Washington DC 20015
dctobin@tobinoconnor.com
jcconcino@tobinoconnor.com

via email to

Jenelle Mayer, MPH
Health Officer
Allegany County
12501 Willowbrook Road SE
P.O. Box 1745
Cumberland, MD 21502
jenelle.mayer@maryland.gov

Nilesh Kalyanaraman, MD
Health Officer
Anne Arundel County
3 Harry S Truman Parkway
Annapolis, MD 21401
hdkaly00@aacounty.org

Letitia Dzirasa, MD
Health Commissioner
Baltimore City
1001 E. Fayette Street
Baltimore, MD 21202
letitia.dzirasa@baltimorecity.gov

Gregory Wm. Branch, MD, MBA, CPE
Health Officer & Director, Department of
Health & Human Services
Baltimore County
6401 York Road. 3rd Floor
Baltimore, MD 21212-2130
gbranch@baltimorecountymd.gov

Laurence Polsky, M.D.
Health Officer
Calvert County
975 Solomons Island Road North
P.O. Box 980
Prince Frederick, MD 20678
laurence.polsky@maryland.gov

Roger Harrell, MHA
Acting Health Officer
Caroline County
403 S. 7th Street
POB 10
Denton, MD 21629
roger.harrell@maryland.gov

Edwin Singer, L.E.H.S.
Health Officer
Carroll County
290 South Center Street
Westminster, MD 21157
ed.singer@maryland.gov

Lauren Levy, JD, MPH
Health Officer
Cecil County
401 Bow Street
Elkton, MD 21921
lauren.levy1@maryland.gov

Roger L. Harrell, MHA
Health Officer
Dorchester County
3 Cedar Street
Cambridge, MD 21613
roger.harrell@maryland.gov

Barbara Brookmyer, MD, MPH
Health Officer
Frederick County
350 Montevue Lane
Frederick, MD 21702
bbrookmyer@frederickcountymd.gov

Robert Stephens, MS
Health Officer
Garrett County
1025 Memorial Drive
Oakland, MD 21550
robert.stephens@maryland.gov

David Bishai, MD, MPH, PhD
Health Officer
Harford County
120 South Hays Street
P.O. Box 797
Bel Air, MD 21014-0797
david.bishai@maryland.gov

Maura Rossman, MD
Health Officer
Howard County
8930 Stanford Blvd.
Columbia, MD 21045
mrossman@howardcountymd.gov

William Webb, MPH
Health Officer
Kent County
125 S. Lynchburg Street
PO Box 359
Chestertown, MD 21620
william.webb@maryland.gov

Joseph Ciotola, MD
Health Officer
Queen Anne's County
206 N. Commerce Street
Centreville, MD 21617-1118
joseph.ciotolamd@maryland.gov

Danielle Weber, MSN, RN
Health Officer
Somerset County
8928 Sign Post Road, Suite 2
Westover, MD 21817
danielle.weber@maryland.gov

Meenakshi Brewster, MD, MPH
Health Officer
St. Mary's County
21580 Peabody Street
P.O.Box 316
Leonardtown, MD 20650
meenakshi.brewster@maryland.gov

Maria A. Maguire, MD, MPP, FAAP
Health Officer
Talbot County
100 South Hanson Street
Easton, MD 21601
mariaa.maguire@maryland.gov

Earl E. Stoner, MPH
Health Officer
Washington County
1302 Pennsylvania Avenue
Hagerstown, MD 21742
earl.stoner@maryland.gov

Lori Brewster, MS, APRN/BC, LCADC
Health Officer
Wicomico County
108 E. Main Street
Salisbury, MD 21801-4994
lori.brewster@maryland.gov

Rebecca Jones, RN, MSN
Health Officer
Worcester County
6040 Public Landing Road
P.O. Box 249
Snow Hill, MD 21863
rjones@maryland.gov

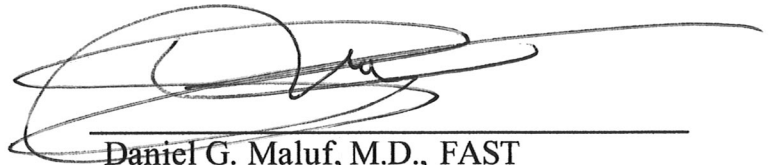


Alison J. Best

I hereby declare and affirm under the penalties of perjury that the facts stated in the foregoing Interested Party Comments in Response to Updated Need Assessment and its attachments are true and correct to the best of my knowledge, information, and belief.

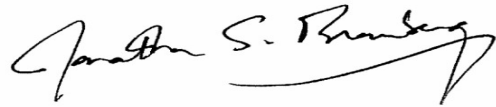
September 16, 2021

Date

A handwritten signature in black ink, appearing to read 'Daniel G. Maluf', is written over a horizontal line. The signature is somewhat stylized and loops around the line.

Daniel G. Maluf, M.D., FAST
Director, Program in Transplantation;
Interim
Chief, Division of Transplant Surgery
University of Maryland Medical Center

I hereby declare and affirm under the penalties of perjury that the facts stated in the foregoing Interested Party Comments in Response to Updated Need Assessment and its attachments are true and correct to the best of my knowledge, information, and belief.



September 16, 2021

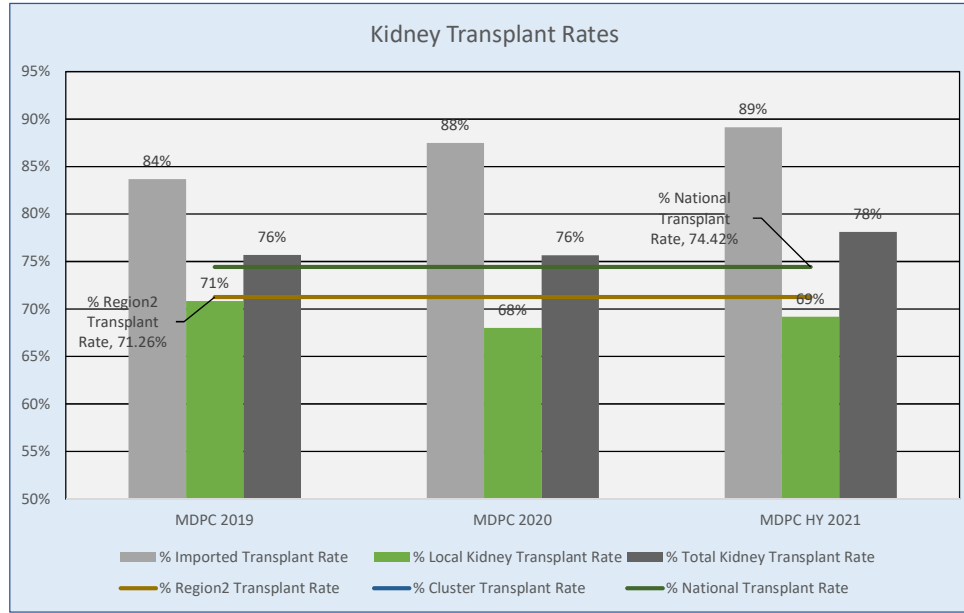
Date

Jonathan S. Bromberg, M.D., PhD
Professor of Surgery and Microbiology
and Immunology
Vice Chair for Research
University of Maryland School of
Medicine

EXHIBIT 1

Notes: Region2, cluster and national data are from UNOS data 5/1/2020-4/30/2021
 HY 2021: 1/1/2021-6/30/2021

Transplant Rates:



Year	Imported Kidneys			Local Kidneys			Total Kidneys			% Region2 Transplant Rate	% Cluster Transplant Rate	% National Transplant Rate
	# Kidney Imported	# Kidney Transplanted	% Imported Transplant Rate	# Kidney Recovered with intent to transplant	# Local Kidney Transplanted	% Local Kidney Transplant Rate	# Total Kidney Recovered	# Total Kidney Transplanted	% Total Kidney Transplant Rate			
MDPC 2019	190	159	84%	312	221	71%	502	380	76%	71.26%	74.43%	74.42%
MDPC 2020	176	154	88%	272	185	68%	448	339	76%	71.26%	74.43%	74.42%
MDPC HY 2021	129	115	89%	159	110	69%	288	225	78%	71.26%	74.43%	74.42%
Total:	495	428	86.46%	743	516	69.45%	1238	944	76.25%			

EXHIBIT 2

2019 Organ Imports Report

XC Date	UNOS ID	Donor OPO	Organ	Disposition	Reason not Txp'd	Disp if not Txp'd	Import Flyout	# of Kidney Imported Imp	# of Kidney transplanted Imp
07/05/2019	AGGC317	PADV - Gift of Life Donor Program	B Kidney	Declined in OR	Biopsy findings		Import	2	0
09/02/2019	AGIA414	OHOV - LifeCenter Organ Donor Network	B Kidney	Declined	Biopsy findings	Medical Waste	Import	2	0
11/14/2019	AGKN083	ALOB - Alabama Organ Center	B Kidney	Declined	Biopsy findings	Medical Waste	Import	2	0
12/28/2019	AGLZ304	PADV - Gift of Life Donor Program	B Kidney	Declined	kidney accepted prior to UM target pt		Import	2	0
11/19/2019	AGKP266	PADV - Gift of Life Donor Program	Heart/L Kidney	Transplant (UM)			Flyout	1	1
01/05/2019	AGAA388	PADV - Gift of Life Donor Program	Kidney	Declined Prior to Import			Import	0	0
01/08/2019	AGAF436	PADV - Gift of Life Donor Program	Kidney	High PRA			Import	0	0
01/10/2019	AGAI072	PADV - Gift of Life Donor Program	Kidney	Declined Prior to Import	Donor Medical history		Import	0	0
01/18/2019	AGAO241	PADV - Gift of Life Donor Program	Kidney	High PRA			Import	0	0
01/22/2019	AGAU017	NJTO - New Jersey Organ and Tissue Sharing Network OPO	Kidney	KDPI > 85 - Not Primary	Warm ischemic time too long		Import	0	0
02/03/2019	AGBA390	PATF - Center for Organ Recovery and Education	Kidney	High PRA			Import	0	0
02/14/2019	AGBK094	MIOP - Gift of Life Michigan	Kidney	High PRA	Positive XM		Import	0	0
02/23/2019	AGBT096	MAOB - New England Organ Bank	Kidney	Declined Prior to Import	Anatomical abnormalities		Import	0	0
02/26/2019	AGBX243	NJTO - New Jersey Organ and Tissue Sharing Network OPO	Kidney	Declined Prior to Import	Biopsy findings		Import	0	0
02/28/2019	AGBY246	TXGC - LifeGift Organ Donation Center	Kidney	Declined Prior to Import			Import	0	0
03/02/2019	AGB2103	NJTO - New Jersey Organ and Tissue Sharing Network OPO	Kidney	KDPI > 85 - Not Primary			Import	0	0
03/04/2019	AGCC262	NJTO - New Jersey Organ and Tissue Sharing Network OPO	Kidney	Declined Prior to Import	+XM		Import	0	0
03/21/2019	AGCT403	PADV - Gift of Life Donor Program	Kidney	KDPI > 85 - Not Primary			Import	0	0
03/22/2019	AGCT212	DCTC - Washington Regional Transplant Consortium	Kidney	KDPI > 85 - Not Primary			Import	0	0
04/03/2019	AGC4337	PADV - Gift of Life Donor Program	Kidney	High PRA	+ cross match		Import	0	0
04/04/2019	AGDB127	PADV - Gift of Life Donor Program	Kidney	Declined Prior to Import	recip 801		Import	0	0
05/01/2019	AGD3122	TNDS - Tennessee Donor Services	Kidney	Declined Prior to Import	Donor Medical history		Import	0	0
05/01/2019	AGD3291	PADV - Gift of Life Donor Program	Kidney	Declined Prior to Import	Accepted locally		Import	0	0
05/14/2019	AGELO95	FLMP - Life Alliance Organ Recovery Agency	Kidney	High PRA			Import	0	0
05/14/2019	AGEM338	PADV - Gift of Life Donor Program	Kidney	Declined Prior to Import	Anatomy and bx		Import	0	0
05/23/2019	AGEU167	DCTC - Washington Regional Transplant Consortium	Kidney	KDPI > 85 - Not Primary			Import	0	0
05/31/2019	AGE3273	NJTO - New Jersey Organ and Tissue Sharing Network OPO	Kidney	Declined Prior to Import	No Waivers		Import	0	0
06/18/2019	AGFP061	PADV - Gift of Life Donor Program	Kidney	Declined Prior to Import	Too old on ice		Import	0	0
06/26/2019	AGFS175	PADV - Gift of Life Donor Program	Kidney	Declined Prior to Import	patient not ready for transplant		Import	0	0
07/01/2019	AGF2201	PADV - Gift of Life Donor Program	Kidney	Declined Prior to Import	No Bx waivers offered		Import	0	0
07/05/2019	AGGC367	MAOB - New England Organ Bank	Kidney	Declined Prior to Import	recpt didnt come in to give new sample		Import	0	0
07/18/2019	AGGO091	PADV - Gift of Life Donor Program	Kidney	High PRA			Import	0	0
07/27/2019	AGGX481	DCTC - Washington Regional Transplant Consortium	Kidney	Declined Prior to Import	Donor Medical history		Import	0	0
08/23/2019	AGHU332	NJTO - New Jersey Organ and Tissue Sharing Network OPO	Kidney	Transplant (JH)			Import	1	1
08/28/2019	AGHY477	VATB - LifeNet Health	Kidney	High PRA	+ XM		Import	0	0
09/27/2019	AGIY392	GALL - LifeLink of Georgia	Kidney	HOPE Act	kidneys accepted		Import	0	0
10/04/2019	AGJB278	NJTO - New Jersey Organ and Tissue Sharing Network OPO	Kidney	Declined Prior to Import	Poor organ function		Import	0	0
10/12/2019	AGJJ435	PADV - Gift of Life Donor Program	Kidney	Declined Prior to Import	poor back table flush		Import	0	0
10/21/2019	AGJS447	PADV - Gift of Life Donor Program	Kidney	Declined Prior to Import	No Waivers		Import	0	0
11/06/2019	AGKC080	PADV - Gift of Life Donor Program	Kidney	Declined Prior to Import	+ XM		Import	0	0
01/15/2019	AGAM015	PATF - Center for Organ Recovery and Education	Kidney/Panc	Declined Prior to Import	No Waivers		Import	0	0
01/18/2019	AGAO241	PADV - Gift of Life Donor Program	Kidney/Panc	Declined Prior to Import	Diseased organ		Import	0	0

2019 Local Organ Disposition Report

Run Date: 8/4/2021 12:12:45 PM

UNOS ID	Hospital	R Ki	L Ki	D/E Ki	# Recovered with Intent to Transplant	# Kidney transplanted	# of kidney MW	XC
AFL4330	UMMC	MDUM	MDUM	N/A	2	2	0	01/01/2019 11:27
AGAA174	UMMC	NYUM	NYUM	N/A	2	2	0	01/03/2019 11:00
AGAI063	SHB	MDJH	MDJH	N/A	2	2	0	01/11/2019 11:03
AGAJ378	JHBMC	MDUM	MDJH	N/A	2	2	0	01/12/2019 07:15
AGAJ397	UPMCWV	MW	MW	N/A	2	0	2	01/12/2019 14:16
AGAK086	BWMC	LAOF	MDJH	N/A	2	2	0	01/14/2019 09:08
AGAM173	AAMC	MW	MW	N/A	2	0	2	01/15/2019 09:41
AGAO253	UMMC	MDUM	MDJH	N/A	2	2	0	01/17/2019 11:04
AGAP052	PRMC	LLF	LLF	N/A	2	0	0	01/19/2019 09:59
AGAR246	JHBMC	UMMS	UMMS	N/A	2	0	0	01/20/2019 09:57
AGAW281	FHH	LLF	LLF	N/A	2	0	0	01/24/2019 10:29
AGAW496	SHB	MDUM	MDUM	N/A	2	2	0	01/25/2019 09:12
AGAY397	SAH	MDJH	MDUM	N/A	2	2	0	01/27/2019 09:40
AGAZ425	SAH	PAUP	PAUP	N/A	2	2	0	01/28/2019 09:52
AGA2289	MRMC	MDJH	MDJH	N/A	2	2	0	01/29/2019 10:34
AGA2141	SHB	CALA	MDUM	N/A	2	2	0	01/30/2019 09:39
AGA3197	PRMC	PALV	MDUM	N/A	2	2	0	01/31/2019 10:09
AGA4423	JHBMC	MDJH	MDUM	N/A	2	2	0	02/02/2019 10:19
AGBA200	FSHC	MDJH	MDUM	N/A	2	2	0	02/04/2019 16:10
AGBF273	MRMC	MDUM	MDUM	N/A	2	2	0	02/08/2019 12:38
AGBG018	JHBMC	NR	NR	N/A	0	0	0	02/09/2019 11:41
AGBL261	SAH	MDJH	MDJH	N/A	2	2	0	02/13/2019 08:44
AGBJ274	MRMC	MW	MW	N/A	2	0	2	02/13/2019 09:24
AGBL107	JHBMC	MDUM	MDUM	N/A	2	2	0	02/14/2019 12:06
AGBW283	UMMC	WVCA	WVCA	N/A	2	2	0	02/25/2019 09:31
AGBY254	UMMC	IIAM	IIAM	N/A	2	0	0	02/27/2019 11:17
AGCB195	JHH	MDJH	MDJH	N/A	2	2	0	03/02/2019 18:07
AGCB462	UCMC	MDJH	MDUM	N/A	2	2	0	03/03/2019 19:04
AGCA477	BWMC	MW	MW	N/A	2	0	2	03/04/2019 12:43
AGCD163	UMH	MW	NYNY	N/A	2	1	1	03/06/2019 10:33
AGCD364	JHBMC	DCGU	MDJH	N/A	2	2	0	03/06/2019 11:50
AGCG371	MRMC	NR	NR	N/A	0	0	0	03/09/2019 09:43
AGCJ154	SAH	MDJH	MDUM	N/A	2	2	0	03/12/2019 11:55
AGCM202	SJMC	MW	MW	N/A	2	0	2	03/15/2019 10:48
AGCQ336	UMMC	MW	MW	N/A	2	0	2	03/18/2019 09:13
AGCS232	PRMC	NR	NR	N/A	0	0	0	03/21/2019 12:56
AGCS090	SAH	MDUM	LLF	N/A	2	1	0	03/21/2019 14:01
AGCT263	FHH	ILLU	VAUV	N/A	2	2	0	03/22/2019 11:26
AGCU146	UMMC	LLF	LLF	N/A	2	0	0	03/23/2019 10:59
AGCY122	SHB	JHH	JHH	N/A	2	0	0	03/27/2019 15:03
AGCZ429	UMMC	MDJH	NYMA	N/A	2	2	0	03/28/2019 12:23
AGC3062	SAH	LLF	LLF	N/A	2	0	0	03/30/2019 18:08

2019 Organ Imports Report

XC Date	UNOS ID	Donor OPO	Organ	Disposition	Reason not Txp	Disp if not Txp	Import Flyout	# of Kidney Imported Imp	# of Kidney transplanted Imp
02/24/2019	AGBW233	NJTO - New Jersey Organ and Tissue Sharing Network OPO	Kidney/Panc	Declined in OR	Poor organ function		Import	1	0
03/15/2019	AGCN465	PADV - Gift of Life Donor Program	Kidney/Panc	Declined Prior to Import	accepted prior to UM pt		Import	0	0
04/03/2019	AGC4337	PADV - Gift of Life Donor Program	Kidney/Panc	Declined Prior to Import	No one to recover the organ		Import	0	0
04/10/2019	AGDH090	DCTC - Washington Regional Transplant Consortium	Kidney/Panc	Declined Prior to Import	recept not ready		Import	0	0
05/14/2019	AGEM197	NJTO - New Jersey Organ and Tissue Sharing Network OPO	Kidney/Panc	Declined Prior to Import	no local recovery available		Import	0	0
06/25/2019	AGFX318	PADV - Gift of Life Donor Program	Kidney/Panc	Declined Prior to Import	Accepted prior to UM primary		Import	0	0
07/18/2019	AGGO091	PADV - Gift of Life Donor Program	Kidney/Panc	Declined in OR	Anatomical abnormalities		Import	1	0
08/06/2019	AGGS371	PADV - Gift of Life Donor Program	Kidney/Panc	Declined Prior to Import	+UACR		Import	0	0
08/14/2019	AGHK372	PADV - Gift of Life Donor Program	Kidney/Panc	Declined Prior to Import	Diseased organ		Import	0	0
09/09/2019	AGIG240	PADV - Gift of Life Donor Program	Kidney/Panc	Declined Prior to Import	No recipient located-list exhausted		Import	0	0
09/10/2019	AGIG401	DCTC - Washington Regional Transplant Consortium	Kidney/Panc	Declined	Accepted by Primary Ctr		Import	1	0
09/13/2019	AGIJ414	NJTO - New Jersey Organ and Tissue Sharing Network OPO	Kidney/Panc	Declined Prior to Import	CIT		Import	0	0
09/20/2019	AGIS159	NJTO - New Jersey Organ and Tissue Sharing Network OPO	Kidney/Panc	Declined Prior to Import	Unacceptable antigens no blood for XM		Import	0	0
09/25/2019	AGIV390	DCTC - Washington Regional Transplant Consortium	Kidney/Panc	Declined Prior to Import			Import	0	0
10/28/2019	AGJZ084	DCTC - Washington Regional Transplant Consortium	Kidney/Panc	Declined Prior to Import	Anatomical abnormalities		Import	0	0
11/19/2019	AGKP266	PADV - Gift of Life Donor Program	Kidney/Panc	Declined Prior to Import	+FXM		Import	0	0
11/20/2019	AGKR006	PADV - Gift of Life Donor Program	Kidney/Panc	Declined Prior to Import	Quality		Import	0	0
01/02/2019	AFL4055	PADV - Gift of Life Donor Program	L Kidney	Transplant (JH)			Import	1	1
01/03/2019	AGAA321	PATF - Center for Organ Recovery and Education	L Kidney	Transplant (JH)			Import	1	1
01/05/2019	AGAD304	VATB - LifeNet Health	L Kidney	Transplant (UM)			Import	1	1
01/06/2019	AGAE221	TXGC - LifeGift Organ Donation Center	L Kidney	Transplant (UM)			Import	1	1
01/06/2019	AGAE341	NCNC - Carolina Donor Services	L Kidney	Transplant (UM)			Import	1	1
01/15/2019	AGAM473	TNDS - Tennessee Donor Services	L Kidney	Transplant (JH)			Import	1	1
01/19/2019	AGAR305	ALOB - Alabama Organ Center	L Kidney	Transplant (JH)			Import	1	1
01/26/2019	AGAY222	MAOB - New England Organ Bank	L Kidney	Transplant (UM)			Import	1	1
01/27/2019	AGAX196	MAOB - New England Organ Bank	L Kidney	Transplant (JH)			Import	1	1
01/31/2019	AGA3118	NYAP - Center for Donation and Transplant	L Kidney	Transplant (JH)			Import	1	1
02/08/2019	AGBF260	TXSB - Southwest Transplant Alliance	L Kidney	Declined	Organ not as described	Medical Waste	Import	1	0
02/09/2019	AGBH398	PADV - Gift of Life Donor Program	L Kidney	Declined	Biopsy findings	Returned to OPO	Import	1	0
02/10/2019	AGBI357	CTOP - LifeChoice Donor Services	L Kidney	Transplant (JH)			Import	1	1
02/11/2019	AGBI333	WIDN - Wisconsin Donor Network	L Kidney	Transplant (UM)			Import	1	1
02/18/2019	AGBP048	MWOB - Midwest Transplant Network	L Kidney	Transplant (JH)			Import	1	1
02/20/2019	AGBR378	NCCM - Lifeshare of the Carolinas	L Kidney	Transplant (JH)			Import	1	1
02/23/2019	AGBU132	FLUF - LifeQuest Organ Recovery Services	L Kidney	Declined	VXM & recvd better offer	Returned to OPO	Import	1	0
02/28/2019	AGBZ234	DCTC - Washington Regional Transplant Consortium	L Kidney	Declined	Biopsy findings	Returned to OPO	Import	1	0
03/01/2019	AGCA127	NJTO - New Jersey Organ and Tissue Sharing Network OPO	L Kidney	Transplant (JH)			Import	1	1
03/06/2019	AGCD376	DCTC - Washington Regional Transplant Consortium	L Kidney	Transplant (JH)			Import	1	1
03/15/2019	AGCN421	MWOB - Midwest Transplant Network	L Kidney	Transplant (JH)			Import	1	1
03/28/2019	AGCX208	MNOP - LifeSource Upper Midwest Organ Procurement Organization	L Kidney	Transplant (UM)			Import	1	1
03/30/2019	AGC2046	DCTC - Washington Regional Transplant Consortium	L Kidney	Transplant (UM)			Import	1	1
04/19/2019	AGDR275	PADV - Gift of Life Donor Program	L Kidney	Transplant (JH)			Import	1	1
04/20/2019	AGDR215	MAOB - New England Organ Bank	L Kidney	Transplant (JH)			Import	1	1
04/24/2019	AGDV074	CASD - Lifesharing Community Organ & Tissue Donation	L Kidney	Transplant (UM)			Import	1	1

2019 Local Organ Disposition Report

Run Date: 8/4/2021 12:12:45 PM

UNOS ID	Hospital	R Ki	L Ki	D/E Ki	# Recovered with Intent to Transplant	# Kidney transplanted	# of kidney MW	XC
AGC3376	JHBMC	MDUM	PAHE	N/A	2	2	0	03/31/2019 12:15
AGC5103	MPMC	VAMC	NCDU	N/A	2	2	0	04/02/2019 10:34
AGC5225	PRMC	MDJH	MDJH	N/A	2	2	0	04/02/2019 15:58
AGDB381	UMMC	JHH	MW	N/A	2	0	1	04/04/2019 11:14
AGDB470	JHH	MDJH	TXSP	N/A	2	2	0	04/04/2019 13:42
AGDB389	CHC	MDJH	MW	N/A	2	1	1	04/05/2019 09:52
AGDF464	UMMC	LLF	LLF	N/A	2	0	0	04/08/2019 09:18
AGDH206	CHMC	MDJH	MDJH	N/A	2	2	0	04/10/2019 02:09
AGDI299	MHE	MDJH	MDJH	N/A	2	2	0	04/11/2019 12:15
AGDI116	UMMC	MDJH	MDJH	N/A	2	2	0	04/12/2019 09:08
AGDM139	SJMC	MDJH	MDJH	N/A	2	2	0	04/17/2019 10:32
AGDO365	UMMC	JHH	LLF	N/A	2	0	0	04/17/2019 11:37
AGDP322	UMMC	MW	MDJH	N/A	2	1	1	04/18/2019 11:48
AGDP041	CHMC	MDUM	MDUM	N/A	2	2	0	04/18/2019 14:52
AGDQ339	UMMC	MW	MW	N/A	2	0	2	04/19/2019 10:09
AGDQ495	SHB	MW	MW	N/A	2	0	2	04/19/2019 14:57
AGDR081	UMMC	PAHH	MDUM	N/A	2	2	0	04/20/2019 09:38
AGDR368	SHB	MDJH	MDUM	N/A	2	2	0	04/20/2019 12:47
AGDU057	SHB	NR	NR	N/A	0	0	0	04/22/2019 10:41
AGDZ345	CHC	MDJH	MDJH	N/A	2	2	0	04/27/2019 09:34
AGDY173	PRMC	MDJH	MW	N/A	2	1	1	04/27/2019 13:53
AGD3052	JHBMC	MW	MW	N/A	2	0	2	05/01/2019 10:43
AGD4359	NWHC	MW	MW	N/A	2	0	2	05/02/2019 09:53
AGEA314	AAMC	MDJH	MDUM	N/A	2	2	0	05/03/2019 12:15
AGEG186	SHB	MDUM	MDUM	N/A	2	2	0	05/10/2019 11:01
AGEH079	UMMC	MDUM	MDUM	N/A	2	2	0	05/11/2019 10:23
AGEK427	UMMC	MDJH	MDUM	N/A	2	2	0	05/12/2019 09:12
AGEJ332	UMMC	MDUM	MDJH	N/A	2	2	0	05/12/2019 16:02
AGEJ403	MPMC	MDUM	MDUM	N/A	2	2	0	05/13/2019 14:00
AGEQ120	SHB	JHH	LLF	N/A	2	0	0	05/19/2019 10:37
AGES385	FHH	MW	MDJH	N/A	2	1	1	05/21/2019 10:54
AGEV388	CHC	NR	NR	N/A	0	0	0	05/24/2019 09:03
AGEW037	HH	MDJH	MW	N/A	2	1	1	05/25/2019 14:04
AGEX340	BWMC	LLF	LLF	N/A	2	0	0	05/25/2019 15:58
AGEW322	SMH	SCMU	MDJH	N/A	2	2	0	05/26/2019 09:49
AGEX409	MPMC	MW	MW	N/A	2	0	2	05/27/2019 10:22
AGEY264	FHH	NJRW	MDJH	N/A	2	2	0	05/27/2019 12:35
AGE4156	JHBMC	FLJM	FLJM	N/A	2	2	0	06/02/2019 12:39
AGFO443	PRMC	MDUM	MDUM	N/A	2	2	0	06/17/2019 06:30
AGFO074	MPMC	DCGU	DCGU	N/A	2	2	0	06/17/2019 22:23
AGFW137	UMMC	MDJH	LLF	N/A	2	1	0	06/24/2019 09:30
AGFX051	UMMC	MDUM	MW	N/A	2	1	1	06/25/2019 08:54
AGF1151	NWHC	LLF	LLF	N/A	2	0	0	06/28/2019 11:38

2019 Organ Imports Report

XC Date	UNOS ID	Donor OPO	Organ	Disposition	Reason not Txp'd	Disp if not Txp'd	Import Flyout	# of Kidney Imported Imp	# of Kidney transplanted Imp
04/28/2019	AGD1411	PADV - Gift of Life Donor Program	L Kidney	Transplant (UM)			Import	1	1
05/07/2019	AGEE421	TXGC - LifeGift Organ Donation Center	L Kidney	Transplant (JH)			Import	1	1
05/08/2019	AGEF496	OHLB - LifeBanc	L Kidney	Transplant (JH)			Import	1	1
05/10/2019	AGEH248	PATF - Center for Organ Recovery and Education	L Kidney	Transplant (JH)			Import	1	1
05/22/2019	AGER121	TXGC - LifeGift Organ Donation Center	L Kidney	Declined Prior to Import	Too old on ice		Import	0	0
05/24/2019	AGEU234	NYRT - New York Organ Donor Network	L Kidney	Transplant (JH)			Import	1	1
05/24/2019	AGEV394	NJTO - New Jersey Organ and Tissue Sharing Network OPO	L Kidney	Transplant (JH)			Import	1	1
05/26/2019	AGEW391	DCTC - Washington Regional Transplant Consortium	L Kidney	Transplant (UM)			Import	1	1
06/08/2019	AGFF148	LAOP - Louisiana Organ Procurement Agency	L Kidney	Transplant (JH)			Import	1	1
06/24/2019	AGFV109	PADV - Gift of Life Donor Program	L Kidney	Transplant (UM)			Import	1	1
07/20/2019	AGGR008	VATB - LifeNet Health	L Kidney	Transplant (JH)			Import	1	1
08/04/2019	AGHA387	MIOP - Gift of Life Michigan	L Kidney	Transplant (JH)			Import	1	1
08/13/2019	AGHJ205	PADV - Gift of Life Donor Program	L Kidney	Transplant (JH)			Import	1	1
08/13/2019	AGHK470	CORS - Donor Alliance	L Kidney	Transplant (JH)			Import	1	1
08/26/2019	AGHX368	PADV - Gift of Life Donor Program	L Kidney	Transplant (JH)			Import	1	1
09/04/2019	AGIC262	TNDS - Tennessee Donor Services	L Kidney	Declined	Poor organ function	Returned to OPO	Import	1	0
09/06/2019	AGIC255	GALL - LifeLink of Georgia	L Kidney	Transplant (JH)			Import	1	1
09/15/2019	AGIN313	PRLL - LifeLink of Puerto Rico	L Kidney	Declined	Biopsy findings		Import	1	0
09/17/2019	AGIP171	LAOP - Louisiana Organ Procurement Agency	L Kidney	Transplant (JH)			Import	1	1
09/20/2019	AGIR265	FLUF - LifeQuest Organ Recovery Services	L Kidney	Transplant (JH)			Import	1	1
09/24/2019	AGIW125	PADV - Gift of Life Donor Program	L Kidney	Transplant (UM)			Import	1	1
09/25/2019	AGIV390	DCTC - Washington Regional Transplant Consortium	L Kidney	Transplant (JH)			Import	1	1
09/30/2019	AGI4014	VATB - LifeNet Health	L Kidney	Transplant (JH)			Import	1	1
10/09/2019	AGJF372	DCTC - Washington Regional Transplant Consortium	L Kidney	Transplant (JH)			Import	1	1
10/10/2019	AGJH346	TNDS - Tennessee Donor Services	L Kidney	Declined	No recipient located-list exhausted		Import	1	0
10/10/2019	AGJH462	PADV - Gift of Life Donor Program	L Kidney	Transplant (UM)			Import	1	1
10/11/2019	AGJJ045	GALL - LifeLink of Georgia	L Kidney	Transplant (JH)			Import	1	1
10/11/2019	AGJK178	PADV - Gift of Life Donor Program	L Kidney	Transplant (JH)			Import	1	1
10/12/2019	AGJG007	PADV - Gift of Life Donor Program	L Kidney	Transplant (JH)			Import	1	1
10/14/2019	AGIL057	PADV - Gift of Life Donor Program	L Kidney	Transplant (JH)			Import	1	1
10/22/2019	AGJU064	PADV - Gift of Life Donor Program	L Kidney	Transplant (JH)			Import	1	1
10/26/2019	AGJX379	PATF - Center for Organ Recovery and Education	L Kidney	Transplant (UM)			Import	1	1
10/28/2019	AGJZ084	DCTC - Washington Regional Transplant Consortium	L Kidney	Transplant (JH)			Import	1	1
11/05/2019	AGKC119	GALL - LifeLink of Georgia	L Kidney	Transplant (JH)			Import	1	1
11/16/2019	AGKN473	PADV - Gift of Life Donor Program	L Kidney	Transplant (UM)			Import	1	1
11/21/2019	AGKR115	PADV - Gift of Life Donor Program	L Kidney	Transplant (JH)			Import	1	1
11/29/2019	AGK2187	PADV - Gift of Life Donor Program	L Kidney	Transplant (UM)			Import	1	1
11/29/2019	AGK2248	NYRT - New York Organ Donor Network	L Kidney	Declined	Biopsy findings		Import	1	0
12/03/2019	AGK4001	PATF - Center for Organ Recovery and Education	L Kidney	Transplant (JH)			Import	1	1
12/05/2019	AGLB062	PADV - Gift of Life Donor Program	L Kidney	Transplant (JH)			Import	1	1
12/06/2019	AGK4448	PADV - Gift of Life Donor Program	L Kidney	Transplant (JH)			Import	1	1
12/09/2019	AGLG116	HIOP - Organ Donor Center of Hawaii	L Kidney	Transplant (UM)			Import	1	1
12/10/2019	AGLI118	PATF - Center for Organ Recovery and Education	L Kidney	Transplant (UM)			Import	1	1
12/11/2019	AGLG476	TXGC - LifeGift Organ Donation Center	L Kidney	Transplant (JH)			Import	1	1
12/14/2019	AGLM183	PATF - Center for Organ Recovery and Education	L Kidney	Transplant (UM)			Import	1	1
12/16/2019	AGLN349	PADV - Gift of Life Donor Program	L Kidney	Transplant (UM)			Import	1	1
03/12/2019	AGCK194	FLFH - TransLife	L Kidney/Panc	Transplant (UM)			Import	1	1
04/23/2019	AGDU341	MWOB - Midwest Transplant Network	L Kidney/Panc	Transplant (UM)			Import	1	1
06/27/2019	AGFY056	TXGC - LifeGift Organ Donation Center	L Kidney/Panc	Transplant (UM)			Import	1	1
06/28/2019	AGFY174	PATF - Center for Organ Recovery and Education	L Kidney/Panc	Transplant (UM)			Import	1	1

2019 Local Organ Disposition Report

Run Date: 8/4/2021 12:12:45 PM

UNOS ID	Hospital	R Ki	L Ki	D/E Ki	# Recovered with Intent to Transplant	# Kidney transplanted	# of kidney MW	XC
AGF2128	UMMC	MW	MW	N/A	2	0	2	06/30/2019 08:48
AGF3376	FSHC	MDJH	MDJH	N/A	2	2	0	07/02/2019 10:12
AGF4145	SAH	N/A	N/A	AZMC	2	2	0	07/02/2019 14:01
AGGA284	SAH	NYMA	LLF	N/A	2	1	0	07/03/2019 13:49
AGGC187	UMH	MNUM	MDUM	N/A	2	2	0	07/05/2019 14:49
AGGE135	SAH	NR	NR	N/A	0	0	0	07/07/2019 13:24
AGGF151	HMH	MDJH	MDJH	N/A	2	2	0	07/09/2019 10:55
AGGH248	UCMC	MDJH	MDJH	N/A	2	2	0	07/10/2019 12:43
AGGL241	FHH	MDUM	CAGH	N/A	2	2	0	07/12/2019 21:09
AGGO156	UMMC	N/A	N/A	MDJH	2	2	0	07/16/2019 16:32
AGGR240	MHE	MDUM	MDJH	N/A	2	2	0	07/19/2019 13:24
AGGS415	UMMC	MDJH	MDUM	N/A	2	2	0	07/21/2019 09:13
AGGU377	SHB	LLF	LLF	N/A	2	0	0	07/22/2019 13:49
AGG3070	UMMC	DCGU	NJSB	N/A	2	2	0	07/31/2019 10:45
AGHB280	CHMC	MW	MW	N/A	2	0	2	08/04/2019 11:53
AGHE325	PRMC	AZMC	MW	N/A	2	1	1	08/06/2019 14:41
AGHE426	JHH	MDJH	MDJH	N/A	2	2	0	08/06/2019 16:37
AGHE070	SHB	MDUM	MDJH	N/A	2	2	0	08/07/2019 15:07
AGHG255	UMH	MW	MW	N/A	2	0	2	08/09/2019 11:22
AGHH020	JHH	MDUM	DCGU	N/A	2	2	0	08/10/2019 11:03
AGHL241	BWMC	MDJH	MDUM	N/A	2	2	0	08/14/2019 14:53
AGHT013	FHH	LLF	LLF	N/A	2	0	0	08/22/2019 10:17
AGHU166	UMMC	NJBI	MDUM	N/A	2	2	0	08/23/2019 11:31
AGHW320	SHB	NCDU	MDJH	N/A	2	2	0	08/25/2019 15:44
AGHZ408	JHH	DCGU	DCGU	N/A	2	2	0	08/26/2019 10:46
AGHW126	SHB	MDJH	MDJH	N/A	2	2	0	08/26/2019 13:45
AGH1342	UPMCWV	MW	MW	N/A	2	0	2	08/29/2019 11:19
AGH1399	CHC	MDUM	MDJH	N/A	2	2	0	08/29/2019 20:52
AGH1098	PRMC	MDUM	MDJH	N/A	2	2	0	08/30/2019 11:27
AGH3088	FSHC	NR	NR	N/A	0	0	0	08/31/2019 09:52
AGH3316	UMMC	PAGM	MDJH	N/A	2	2	0	09/02/2019 09:49
AGIA262	JHBMC	IIAM	MW	N/A	2	0	1	09/03/2019 13:34
AGIC031	UMMC	UMMS	UMMS	N/A	2	0	0	09/04/2019 21:20
AGII455	UMMC	MDUM	MDUM	N/A	2	2	0	09/11/2019 12:53
AGIJ146	SHB	MDJH	MDUM	N/A	2	2	0	09/11/2019 17:52
AGIQ241	UMMC	MDJH	MDJH	N/A	2	2	0	09/18/2019 09:35
AGIQ279	PRMC	PAAG	MDJH	N/A	2	2	0	09/18/2019 21:54
AGIQ025	MVMC	MDJH	MDJH	N/A	2	2	0	09/19/2019 13:52
AGIS331	UMMC	PALH	MDUM	N/A	2	2	0	09/21/2019 10:05
AGIR286	SAH	MDJH	MDJH	N/A	2	2	0	09/21/2019 10:33
AGIT017	AAMC	MDJH	DCGU	N/A	2	2	0	09/22/2019 09:14
AGIY245	FSHC	MDJH	MDUM	N/A	2	2	0	09/27/2019 12:31
AGI2283	AAMC	MDJH	MDUM	N/A	2	2	0	09/29/2019 12:49
AGJD207	PRMC	MDJH	MDJH	N/A	2	2	0	10/06/2019 10:46
AGJF066	JHH	PAPT	DCGU	N/A	2	2	0	10/08/2019 17:23
AGJG211	UMMC	PAUP	MDUM	N/A	2	2	0	10/10/2019 13:28
AGJJ266	PRMC	NR	NR	N/A	0	0	0	10/11/2019 09:23
AGJK351	UMMC	MDUM	MDJH	N/A	2	2	0	10/12/2019 14:19
AGJM365	MVMC	MW	MW	N/A	2	0	2	10/14/2019 21:03
AGJN313	GSH	TXSP	MDUM	N/A	2	2	0	10/16/2019 12:32

2019 Organ Imports Report

XC Date	UNOS ID	Donor OPO	Organ	Disposition	Reason not Txp'd	Disp if not Txp'd	Import Flyout	# of Kidney Imported Imp	# of Kidney transplanted Imp
07/16/2019	AGGL422	TXSB - Southwest Transplant Alliance	L Kidney/Panc	Transplant (UM)			Import	1	1
07/23/2019	AGGU421	PADV - Gift of Life Donor Program	L Kidney/Panc	Transplant (UM)			Import	1	1
08/16/2019	AGHN274	PADV - Gift of Life Donor Program	L Kidney/Panc	Transplant (UM)			Import	1	1
09/04/2019	AGIA317	PATF - Center for Organ Recovery and Education	L Kidney/Panc	Transplant (JH)			Import	1	1
09/12/2019	AGIJ260	NJTO - New Jersey Organ and Tissue Sharing Network OPO	L Kidney/Panc	Transplant (UM)			Import	1	1
10/27/2019	AGJY438	NVLV - Nevada Donor Network	L Kidney/Panc	Transplant (UM)			Import	1	1
12/05/2019	AGLC136	PADV - Gift of Life Donor Program	L Kidney/Panc	Transplant (UM)			Import	1	1
07/23/2019	AGGU421	PADV - Gift of Life Donor Program	Liver/Kidney	Declined Prior to Import	recipient issues		Flyout	0	0
01/16/2019	AGAN460	PADV - Gift of Life Donor Program	Liver/L Kidney	Transplant (UM)			Flyout	1	1
04/21/2019	AGDT154	NCCM - Lifeshare of the Carolinas	Liver/L Kidney	Transplant (JH)			Flyout	1	1
05/18/2019	AGEP179	PADV - Gift of Life Donor Program	Liver/L Kidney	Transplant (JH)			Flyout	1	1
05/23/2019	AGEV056	PATF - Center for Organ Recovery and Education	Liver/L Kidney	Transplant (JH)			Flyout	1	1
05/27/2019	AGEY429	MIOP - Gift of Life Michigan	Liver/L Kidney	Transplant (JH)			Flyout	1	1
08/17/2019	AGHO497	PATF - Center for Organ Recovery and Education	Liver/L Kidney	Transplant (JH)			Flyout	1	1
01/21/2019	AGAT069	PADV - Gift of Life Donor Program	Liver/R Kidney	Transplant (UM)			Flyout	1	1
01/05/2019	AGAC427	OHOV - LifeCenter Organ Donor Network	R Kidney	Transplant (UM)			Import	1	1
01/06/2019	AGAD039	LAOP - Louisiana Organ Procurement Agency	R Kidney	Transplant (JH)			Import	1	1
01/11/2019	AGAI329	NCCM - Lifeshare of the Carolinas	R Kidney	Transplant (JH)			Import	1	1
01/31/2019	AGA4265	TXGC - LifeGift Organ Donation Center	R Kidney	Transplant (JH)			Import	1	1
02/13/2019	AGBJ466	PATF - Center for Organ Recovery and Education	R Kidney	High PRA	pt not ready		Import	0	0
02/15/2019	AGBN063	FLWC - LifeLink of Florida	R Kidney	Transplant (JH)			Import	1	1
02/17/2019	AGBO214	OHLB - LifeBanc	R Kidney	Transplant (JH)			Import	1	1
02/17/2019	AGBP315	NJTO - New Jersey Organ and Tissue Sharing Network OPO	R Kidney	Declined Prior to Import	Diseased organ		Import	0	0
02/19/2019	AGBQ449	PATF - Center for Organ Recovery and Education	R Kidney	Transplant (JH)			Import	1	1
02/25/2019	AGBW248	PADV - Gift of Life Donor Program	R Kidney	Transplant (JH)			Import	1	1
02/26/2019	AGBW053	MIOP - Gift of Life Michigan	R Kidney	Transplant (UM)			Import	1	1
02/28/2019	AGB2218	PADV - Gift of Life Donor Program	R Kidney	Transplant (JH)			Import	1	1
03/01/2019	AGCA127	NJTO - New Jersey Organ and Tissue Sharing Network OPO	R Kidney	Transplant (JH)			Import	1	1
03/30/2019	AGC2046	DCTC - Washington Regional Transplant Consortium	R Kidney	Transplant (UM)			Import	1	1
04/02/2019	AGC5495	NJTO - New Jersey Organ and Tissue Sharing Network OPO	R Kidney	Transplant (JH)			Import	1	1
04/02/2019	AGDA213	PADV - Gift of Life Donor Program	R Kidney	Transplant (JH)			Import	1	1
04/03/2019	AGDB179	LAOP - Louisiana Organ Procurement Agency	R Kidney	Transplant (UM)			Import	1	1
04/07/2019	AGDE258	TXSA - Texas Organ Sharing Alliance	R Kidney	Transplant (JH)			Import	1	1
04/17/2019	AGDO468	DCTC - Washington Regional Transplant Consortium	R Kidney	Transplant (UM)			Import	1	1
04/24/2019	AGDT113	TXGC - LifeGift Organ Donation Center	R Kidney	Transplant (JH)			Import	1	1
04/24/2019	AGDV395	DCTC - Washington Regional Transplant Consortium	R Kidney	Transplant (UM)			Import	1	1
04/26/2019	AGDZ397	NJTO - New Jersey Organ and Tissue Sharing Network OPO	R Kidney	Declined	Organ trauma	Medical Waste	Import	1	0
04/30/2019	AGD2120	WIDN - Wisconsin Donor Network	R Kidney	Declined	Poor organ function	Returned to OPO	Import	1	0
05/01/2019	AGD3040	FLWC - LifeLink of Florida	R Kidney	Transplant (JH)			Import	1	1
05/18/2019	AGEP075	PADV - Gift of Life Donor Program	R Kidney	Transplant (JH)			Import	1	1
05/18/2019	AGEP179	PADV - Gift of Life Donor Program	R Kidney	Transplant (JH)			Import	1	1
05/22/2019	AGEV400	CADN - California Transplant Donor Network	R Kidney	Transplant (UM)			Import	1	1
05/29/2019	AGE1041	PATF - Center for Organ Recovery and Education	R Kidney	Transplant (JH)			Import	1	1
06/06/2019	AGFD475	MOMA - Mid-America Transplant Services	R Kidney	Transplant (JH)			Import	1	1
06/08/2019	AGFF148	LAOP - Louisiana Organ Procurement Agency	R Kidney	Declined	Organ trauma	Medical Waste	Import	1	0
06/14/2019	AGFL192	NJTO - New Jersey Organ and Tissue Sharing Network OPO	R Kidney	Declined	out of blood group/ recip unsuitable	Returned to OPO	Import	1	0

2019 Local Organ Disposition Report

Run Date: 8/4/2021 12:12:45 PM

UNOS ID	Hospital	R Ki	L Ki	D/E Ki	# Recovered with Intent to Transplant	# Kidney transplanted	# of kidney MW	XC
AGJQ486	UMMC	FLTG	VAMC	N/A	2	2	0	10/19/2019 10:48
AGJT211	SHB	NR	NR	N/A	0	0	0	10/22/2019 09:59
AGJS486	FSHC	MDUM	MDJH	N/A	2	2	0	10/22/2019 17:28
AGJV481	FSHC	MDJH	MDUM	N/A	2	2	0	10/25/2019 14:20
AGJX371	MRMC	MW	MW	N/A	2	0	2	10/26/2019 11:37
AGJ2065	UMMC	MDUM	MDJH	N/A	2	2	0	10/31/2019 12:06
AGJ3236	SHB	LLF	LLF	N/A	2	0	0	10/31/2019 14:05
AGJ4269	SHB	MDUM	MDJH	N/A	2	2	0	11/03/2019 14:04
AGKB225	BWMC	NJHK	NJHK	N/A	2	2	0	11/04/2019 10:27
AGKF060	UMMC	MDJH	MDJH	N/A	2	2	0	11/08/2019 11:53
AGKF442	SAH	MDUM	MDUM	N/A	2	2	0	11/09/2019 11:41
AGKI082	JHH	MDJH	MDUM	N/A	2	2	0	11/10/2019 13:45
AGKI496	BWMC	NR	NR	N/A	0	0	0	11/11/2019 10:00
AGKL441	UMMC	MDJH	MDUM	N/A	2	2	0	11/13/2019 10:57
AGKQ208	UMMC	SCMU	MDUM	N/A	2	2	0	11/18/2019 09:13
AGKV174	UMMC	LLF	LLF	N/A	2	0	0	11/22/2019 22:31
AGKU054	UCMC	PALH	MDJH	N/A	2	2	0	11/23/2019 11:25
AGKZ115	SAH	LLF	LLF	N/A	2	0	0	11/28/2019 10:15
AGK2270	CCUH	MW	MW	N/A	2	0	2	11/30/2019 10:02
AGLE220	JHBMC	MDJH	MDJH	N/A	2	2	0	12/09/2019 13:29
AGLN461	JHBMC	WIUW	MDUM	N/A	2	2	0	12/16/2019 12:58
AGLO055	FSHC	OKSJ	MDJH	N/A	2	2	0	12/17/2019 10:19
AGLO416	UCMC	MDJH	MDUM	N/A	2	2	0	12/17/2019 15:20
AGLP174	BWMC	MDJH	MDUM	N/A	2	2	0	12/18/2019 20:17
AGLT470	PRMC	MW	MDJH	N/A	2	1	1	12/22/2019 10:51
AGLT195	UMMC	N/A	N/A	MDJH	2	2	0	12/23/2019 10:12
AGLU269	SHB	MW	MW	N/A	2	0	2	12/24/2019 08:48
AGLZ436	UMMC	MW	MDJH	N/A	2	1	1	12/28/2019 10:06
AGLZ085	HCGH	MDUM	MDUM	N/A	2	2	0	12/28/2019 12:58
AGL3265	SJMC	MDJH	MDUM	N/A	2	2	0	12/31/2019 11:11
AGL3496	PRMC	MDUM	MDUM	N/A	2	2	0	12/31/2019 19:58

2019 Organ Imports Report

XC Date	UNOS ID	Donor OPO	Organ	Disposition	Reason not Txp	Disp if not Txp	Import Flyout	# of Kidney Imported Imp	# of Kidney transplanted Imp
06/15/2019	AGFM373	CADN - California Transplant Donor Network	R Kidney	Transplant (JH)			Import	1	1
06/24/2019	AGFV109	PADV - Gift of Life Donor Program	R Kidney	Transplant (UM)			Import	1	1
07/04/2019	AGGB197	GALL - LifeLink of Georgia	R Kidney	Transplant (JH)			Import	1	1
07/06/2019	AGGC098	PADV - Gift of Life Donor Program	R Kidney	Transplant (JH)			Import	1	1
07/17/2019	AGGQ257	CORS - Donor Alliance	R Kidney	Transplant (JH)			Import	1	1
07/25/2019	AGGV363	CTOP - LifeChoice Donor Services	R Kidney	Transplant (UM)			Import	1	1
07/27/2019	AGGX099	CAOP - OneLegacy	R Kidney	Transplant (JH)			Import	1	1
07/27/2019	AGGY406	IAOP - Iowa Donor Network	R Kidney	Transplant (JH)			Import	1	1
08/01/2019	AGG3056	OHLE - LifeBanc	R Kidney	Transplant (UM)			Import	1	1
08/03/2019	AGG5367	FLUF - LifeQuest Organ Recovery Services	R Kidney	Transplant (UM)			Import	1	1
08/13/2019	AGHK353	NCNC - Carolina Donor Services	R Kidney	Transplant (JH)			Import	1	1
08/15/2019	AGHM170	CADN - California Transplant Donor Network	R Kidney	Transplant (JH)			Import	1	1
08/28/2019	AGHX390	WIUW - Organ Procurement Organization at the University of Wisconsin	R Kidney	Transplant (JH)			Import	1	1
09/04/2019	AGIA317	PATF - Center for Organ Recovery and Education	R Kidney	Transplant (JH)			Import	1	1
09/08/2019	AGIF199	ILIP - Gift of Hope Organ & Tissue Donor Network	R Kidney	Transplant (JH)			Import	1	1
09/09/2019	AGIH299	PADV - Gift of Life Donor Program	R Kidney	Transplant (UM)			Import	1	1
09/13/2019	AGIJ414	NJTO - New Jersey Organ and Tissue Sharing Network OPO	R Kidney	Transplant (UM)			Import	1	1
09/20/2019	AGIS363	PADV - Gift of Life Donor Program	R Kidney	Transplant (JH)			Import	1	1
09/21/2019	AGIT285	TXSB - Southwest Transplant Alliance	R Kidney	Transplant (JH)			Import	1	1
09/23/2019	AGIV293	PADV - Gift of Life Donor Program	R Kidney	Transplant (JH)			Import	1	1
09/26/2019	AGIU114	MIOP - Gift of Life Michigan	R Kidney	Declined	Anatomical abnormalities		Import	1	0
09/26/2019	AGIX092	MAOB - New England Organ Bank	R Kidney	Transplant (JH)			Import	1	1
09/26/2019	AGIX138	TXSB - Southwest Transplant Alliance	R Kidney	Transplant (JH)			Import	1	1
10/03/2019	AGIA400	PADV - Gift of Life Donor Program	R Kidney	Declined	Anatomical abnormalities	Returned to OPO	Import	1	0
10/09/2019	AGJH318	NYAP - Center for Donation and Transplant	R Kidney	Declined	Recipient Insurance Issue		Import	1	0
10/11/2019	AGJJ035	NCNC - Carolina Donor Services	R Kidney	Transplant (UM)			Import	1	1
10/21/2019	AGJW378	CAOP - OneLegacy	R Kidney	Declined	CIT unable to get bx slide	Medical Waste	Import	1	0
10/22/2019	AGJU064	PADV - Gift of Life Donor Program	R Kidney	Transplant (JH)			Import	1	1
10/26/2019	AGIX474	NYRT - New York Organ Donor Network	R Kidney	Declined	Biopsy findings	Returned to OPO	Import	1	0
11/03/2019	AGKA485	FLFH - TransLife	R Kidney	Transplant (JH)			Import	1	1
11/05/2019	AGKD469	KYDA - Kentucky Organ Donor Affiliates	R Kidney	Transplant (JH)			Import	1	1
11/14/2019	AGKK380	CAOP - OneLegacy	R Kidney	Transplant (JH)			Import	1	1
11/20/2019	AGKQ116	FLUF - LifeQuest Organ Recovery Services	R Kidney	Transplant (JH)			Import	1	1
11/20/2019	AGKR298	OHOV - LifeCenter Organ Donor Network	R Kidney	Declined	Biopsy findings	Medical Waste	Import	1	0
11/20/2019	AGKS211	NJTO - New Jersey Organ and Tissue Sharing Network OPO	R Kidney	Transplant (JH)			Import	1	1
11/21/2019	AGKT438	PATF - Center for Organ Recovery and Education	R Kidney	Transplant (UM)			Import	1	1
12/05/2019	AGLD044	PADV - Gift of Life Donor Program	R Kidney	Transplant (UM)			Import	1	1
12/07/2019	AGLE125	FLFH - TransLife	R Kidney	Transplant (JH)			Import	1	1
12/09/2019	AGLG116	HIOP - Organ Donor Center of Hawaii	R Kidney	Transplant (JH)			Import	1	1
12/14/2019	AGLL261	NCNC - Carolina Donor Services	R Kidney	Transplant (JH)			Import	1	1
12/19/2019	AGLR065	ORUO - Pacific Northwest Transplant Bank	R Kidney	Transplant (JH)			Import	1	1
12/20/2019	AGLR189	TNMS - Mid-South Transplant Foundation	R Kidney	Transplant (JH)			Import	1	1
12/29/2019	AGL1196	LAOP - Louisiana Organ Procurement Agency	R Kidney	Transplant (JH)			Import	1	1
12/29/2019	AGLX386	DCTC - Washington Regional Transplant Consortium	R Kidney	Transplant (JH)			Import	1	1
12/31/2019	AGL3106	TNDS - Tennessee Donor Services	R Kidney	Transplant (JH)			Import	1	1
02/05/2019	AGBD409	PADV - Gift of Life Donor Program	R Kidney/Panc	Transplant (UM)			Import	1	1
02/23/2019	AGBU377	GALL - LifeLink of Georgia	R Kidney/Panc	Transplant (UM)			Import	1	1
02/28/2019	AGBX188	PADV - Gift of Life Donor Program	R Kidney/Panc	Transplant (UM)			Import	1	1
03/20/2019	AGCP434	PADV - Gift of Life Donor Program	R Kidney/Panc	Transplant (UM)			Import	1	1

2019 Local Organ Disposition Report

Run Date: 8/4/2021 12:12:45 PM

UNOS ID	Hospital	R Ki	L Ki	D/E Ki	# Recovered with Intent to Transplant	# Kidney transplanted	# of kidney MW	XC
---------	----------	------	------	--------	---------------------------------------	-----------------------	----------------	----

2020 Organ Imports Report

XC Date	UNOS ID	Donor OPO	Organ	Disposition	Reason not Txpd	Disp if not Txpd	Import Flyout	# of Kidney Imported Imp	# of Kidney transplanted Imp
01/02/2020	AGL4362	PADV - Gift of Life Donor Program	Kidney	Declined Prior to Import	Biopsy findings		Import	0	0
01/04/2020	AHAB452	OKOP - LifeShare Transplant Donor Services of Oklahoma	L Kidney	Transplant (JH)			Import	1	1
01/04/2020	AHAC204	FLWC - LifeLink of Florida	L Kidney	Transplant (JH)			Import	1	1
01/05/2020	AHAD034	PADV - Gift of Life Donor Program	L Kidney	Transplant (UM)			Import	1	1
01/09/2020	AHAF205	ILIP - Gift of Hope Organ & Tissue Donor Network	L Kidney	Transplant (UM)			Import	1	1
01/09/2020	AHAG340	PADV - Gift of Life Donor Program	Kidney/Panc	Declined Prior to Import	+XM		Import	0	0
01/09/2020	AHAG340	PADV - Gift of Life Donor Program	R Kidney	Transplant (JH)			Import	1	1
01/09/2020	AHAH497	ILIP - Gift of Hope Organ & Tissue Donor Network	R Kidney	Declined Prior to Import			Import	0	0
01/10/2020	AHAI023	NJTO - New Jersey Organ and Tissue Sharing Network OPO	R Kidney	Transplant (UM)			Import	1	1
01/12/2020	AHAJ266	GALL - LifeLink of Georgia	R Kidney	Transplant (JH)			Import	1	1
01/13/2020	AHAJ205	ILIP - Gift of Hope Organ & Tissue Donor Network	L Kidney	Transplant (JH)			Import	1	1
01/14/2020	AHAL190	PADV - Gift of Life Donor Program	L Kidney	Transplant (UM)			Import	1	1
01/16/2020	AHAN039	INOP - Indiana Organ Procurement Organization	L Kidney	Transplant (JH)			Import	1	1
01/16/2020	AHAN313	MWOB - Midwest Transplant Network	R Kidney	Declined	Positive FXM		Import	1	0
01/18/2020	AHAP306	CORS - Donor Alliance	R Kidney	Transplant (JH)			Import	1	1
01/20/2020	AHAR219	MIOP - Gift of Life Michigan	L Kidney	Transplant (JH)			Import	1	1
01/20/2020	AHAR219	MIOP - Gift of Life Michigan	R Kidney	HOPE Act	No recipient located-list exhausted	Medical Waste	Import	0	0
01/23/2020	AHAT229	PATF - Center for Organ Recovery and Education	L Kidney	Transplant (UM)			Import	1	1
01/23/2020	AHAT229	PATF - Center for Organ Recovery and Education	R Kidney	Transplant (JH)			Import	1	1
01/24/2020	AHAT319	GALL - LifeLink of Georgia	R Kidney	Transplant (UM)			Import	1	1
01/24/2020	AHAV181	TNDS - Tennessee Donor Services	R Kidney	Transplant (JH)			Import	1	1
01/25/2020	AHAW348	PATF - Center for Organ Recovery and Education	R Kidney	Transplant (JH)			Import	1	1
01/25/2020	AHAW348	PATF - Center for Organ Recovery and Education	R Kidney/Panc	Declined	Kidney not as described unsuitable for target pt; no other KP/Pa pts locally.	Medical Waste	Import	1	0
01/29/2020	AHAZ036	FLUF - LifeQuest Organ Recovery Services	L Kidney	Transplant (JH)			Import	1	1
01/30/2020	AHA2376	DCTC - Washington Regional Transplant Consortium	R Kidney	Transplant (JH)			Import	1	1
01/30/2020	AHA3310	CADN - California Transplant Donor Network	L Kidney	Transplant (JH)			Import	1	1
02/01/2020	AHA2157	WALC - LifeCenter Northwest Organ Donation Network	R Kidney	Transplant (UM)			Import	1	1
02/01/2020	AHA4139	PADV - Gift of Life Donor Program	L Kidney	Transplant (UM)			Import	1	1
02/02/2020	AHBA092	PADV - Gift of Life Donor Program	R Kidney	Transplant (UM)			Import	1	1
02/03/2020	AHA4312	PADV - Gift of Life Donor Program	L Kidney	Transplant (JH)			Import	1	1
02/03/2020	AHA4312	PADV - Gift of Life Donor Program	R Kidney	Transplant (JH)			Import	1	1
02/03/2020	AHA5075	PATF - Center for Organ Recovery and Education	R Kidney	Transplant (JH)			Import	1	1
02/03/2020	AHBA280	AZOB - Donor Network of Arizona	R Kidney/Panc	Transplant (UM)			Import	1	1
02/04/2020	AHBC112	FLFH - TransLife	R Kidney	Transplant (UM)			Import	1	1
02/05/2020	AHBC458	PADV - Gift of Life Donor Program	L Kidney	Transplant (JH)			Import	1	1
02/05/2020	AHBC458	PADV - Gift of Life Donor Program	R Kidney	Transplant (JH)			Import	1	1
02/14/2020	AHBL346	WIUW - Organ Procurement Organization at the University of Wisconsin	L Kidney	Transplant (JH)			Import	1	1
02/14/2020	AHBM446	PADV - Gift of Life Donor Program	L Kidney	Transplant (UM)			Import	1	1
02/17/2020	AHBO152	PADV - Gift of Life Donor Program	L Kidney	Declined	Recipient declined offer	Returned to OPO	Import	1	0
02/18/2020	AHBP314	NVLV - Nevada Donor Network	R Kidney	Transplant (JH)			Import	1	1
02/19/2020	AHBO253	AZOB - Donor Network of Arizona	L Kidney	Transplant (UM)			Import	1	1
02/19/2020	AHBR153	PADV - Gift of Life Donor Program	R Kidney	Transplant (JH)			Import	1	1
02/20/2020	AHBQ093	NJTO - New Jersey Organ and Tissue Sharing Network OPO	R Kidney/Panc	Transplant (UM)			Import	1	1
02/21/2020	AHBR014	TXGC - LifeGift Organ Donation Center	R Kidney/Panc	Transplant (UM)			Import	1	1
02/21/2020	AHBS105	OHLF - Lifeline of Ohio	L Kidney	Transplant (JH)			Import	1	1
02/28/2020	AHDX379	TNDS - Tennessee Donor Services	L Kidney	Transplant (JH)			Import	1	1
03/02/2020	AHB2084	DCTC - Washington Regional Transplant Consortium	Kidney	High PRA	kidneys txpl at outside center		Import	0	0
03/03/2020	AHCB448	MWOB - Midwest Transplant Network	R Kidney	Transplant (UM)			Import	1	1

2020 Local Organ Disposition Report

Run Date: 8/4/2021 12:32:45 PM

UNOS ID	Hospital	R Ki	L Ki	D/E Ki	# Recovered with Intent to Transplant	# Kidney transplanted	# of kidney MW	XC
AHAA285	AAMC	TXPL	PAPT	N/A	2	2	0	01/02/2020 12:16
AHAA250	JHBMC	MW	MW	N/A	2	0	2	01/02/2020 18:53
AHAD202	UPMCWWM	MDUM	MDUM	N/A	2	2	0	01/06/2020 11:07
AHAD460	UMMC	LLF	MDUM	N/A	2	1	0	01/07/2020 14:27
AHAF143	PRMC	MDUM	MDJH	N/A	2	2	0	01/08/2020 15:18
AHAN381	UMMC	MDUM	MDJH	N/A	2	2	0	01/16/2020 13:07
AHAP317	GSH	MW	MW	N/A	2	0	2	01/17/2020 18:16
AHAP238	UMMC	NYMA	MDJH	N/A	2	2	0	01/18/2020 12:07
AHAP203	FHH	PALV	MDJH	N/A	2	2	0	01/18/2020 14:53
AHAW276	UMMC	MW	MW	N/A	2	0	2	01/24/2020 01:48
AHAW158	PRMC	LLF	LLF	N/A	2	0	0	01/25/2020 12:32
AHAW157	FHH	MDJH	MDUM	N/A	2	2	0	01/27/2020 17:41
AHA1329	SAH	PAGM	MDJH	N/A	2	2	0	01/29/2020 17:10
AHA4252	JHBMC	MW	MW	N/A	2	0	2	02/02/2020 11:51
AHBD087	UMMC	MDUM	MDUM	N/A	2	2	0	02/06/2020 11:04
AHBH325	UMMC	MDUM	MDUM	N/A	2	2	0	02/10/2020 09:17
AHBI080	UCMC	LLF	LLF	N/A	2	0	0	02/11/2020 11:21
AHBK466	UMMC	MDUM	MDJH	N/A	2	2	0	02/13/2020 11:10
AHBP285	UMMC	LLF	JHH	N/A	2	0	0	02/18/2020 11:34
AHBQ325	MRMC	MDUM	OHUH	N/A	2	2	0	02/18/2020 14:43
AHBQ202	UCMC	NR	NR	N/A	0	0	0	02/19/2020 10:41
AHBP363	UMMC	MDJH	MDUM	N/A	2	2	0	02/19/2020 12:28
AHBU190	CHC	LLF	LLF	N/A	2	0	0	02/22/2020 18:13
AHBW056	SHB	MDJH	MDJH	N/A	2	2	0	02/25/2020 14:28
AHBY079	PRMC	MW	MW	N/A	2	0	2	02/27/2020 15:20
AHB1473	UPMCWWM	MW	MW	N/A	2	0	2	02/29/2020 15:36
AHB2331	PRMC	NR	NR	N/A	0	0	0	03/01/2020 09:57
AHCC120	FHH	MDUM	Promethera	N/A	2	1	0	03/04/2020 21:42
AHCG182	UMMC	LLF	LLF	N/A	2	0	0	03/10/2020 14:37
AHCI166	MRMC	MDUM	NIRW	N/A	2	2	0	03/12/2020 10:45
AHCJ321	BWMC	NR	NR	N/A	0	0	0	03/12/2020 19:26
AHCK217	FSHC	LLF	LLF	N/A	2	0	0	03/13/2020 14:49
AHCK210	JHBMC	MDUM	MDUM	N/A	2	2	0	03/14/2020 11:01
AHCL308	PRMC	LLF	LLF	N/A	2	0	0	03/14/2020 14:19
AHCO275	UMMC	MDUM	MDUM	N/A	2	2	0	03/17/2020 11:14
AHCU450	CCUH	DCGU	PAUP	N/A	2	2	0	03/24/2020 15:38
AHCV165	SAH	NR	NR	N/A	0	0	0	03/25/2020 11:32
AHCV252	UMMC	MDUM	MDJH	N/A	2	2	0	03/25/2020 11:39
AHCV315	UMMC	MDUM	MDUM	N/A	2	2	0	03/26/2020 11:25
AHCW445	AGH	MAMG	MDJH	N/A	2	2	0	03/27/2020 09:37
AHC2202	NWHC	MDUM	MDUM	N/A	2	2	0	03/30/2020 10:56
AHC1337	JHBMC	MW	MW	N/A	2	0	2	03/30/2020 18:05
AHC3201	FSHC	NR	NR	N/A	0	0	0	03/31/2020 11:43
AHC4257	PRMC	LLF	LLF	N/A	2	0	0	04/01/2020 15:56
AHC3229	JHBMC	NDMC	MDUM	N/A	2	2	0	04/02/2020 12:26
AHDA095	UMMC	TXSP	UTLD	N/A	2	2	0	04/03/2020 10:49
AHDA287	MHE	MW	MW	N/A	2	0	2	04/04/2020 10:24
AHDJ172	MHE	MDUM	MDJH	N/A	2	2	0	04/12/2020 10:42

2020 Organ Imports Report

XC Date	UNOS ID	Donor OPO	Organ	Disposition	Reason not Txpd	Disp if not Txpd	Import Flyout	# of Kidney Imported Imp	# of Kidney transplanted Imp
03/06/2020	AHB3015	CASD - Lifesharing Community Organ & Tissue Donation	L Kidney	Transplant (JH)			Import	1	1
03/07/2020	AHCD061	AZOB - Donor Network of Arizona	R Kidney	Transplant (JH)			Import	1	1
03/10/2020	AHCG111	PATF - Center for Organ Recovery and Education	Liver/L Kidney	Transplant (UM)			Flyout	1	1
03/25/2020	AHCV396	GALL - LifeLink of Georgia	L Kidney	Transplant (JH)			Import	1	1
04/06/2020	AHDE192	ILIP - Gift of Hope Organ & Tissue Donor Network	R Kidney	Transplant (JH)			Import	1	1
04/10/2020	AHDH096	PADV - Gift of Life Donor Program	R Kidney	Transplant (UM)			Import	1	1
04/12/2020	AHDI328	TXGC - LifeGift Organ Donation Center	R Kidney	Transplant (JH)			Import	1	1
04/21/2020	AHDS485	NCCM - Lifeshare of the Carolinas	Liver/L Kidney	Transplant (UM)			Flyout	1	1
04/21/2020	AHDU152	NJTO - New Jersey Organ and Tissue Sharing Network OPO	L Kidney	Transplant (JH)			Import	1	1
04/25/2020	AHDW024	MIOP - Gift of Life Michigan	Liver/L Kidney	Transplant (UM)			Flyout	1	1
05/03/2020	AHD4138	CADN - California Transplant Donor Network	R Kidney	Transplant (JH)			Import	1	1
05/04/2020	AHEB103	NJTO - New Jersey Organ and Tissue Sharing Network OPO	R Kidney	Transplant (JH)			Import	1	1
05/10/2020	AHEH025	INOP - Indiana Organ Procurement Organization	R Kidney	Transplant (JH)			Import	1	1
05/11/2020	AHEH186	OHLB - LifeBanc	R Kidney	Transplant (JH)			Import	1	1
05/13/2020	AHEK483	FLWC - LifeLink of Florida	L Kidney/Panc	Transplant (UM)			Import	1	1
05/14/2020	AHEK248	AZOB - Donor Network of Arizona	R Kidney/Panc	Transplant (UM)			Import	1	1
05/17/2020	AHEP358	LAOP - Louisiana Organ Procurement Agency	R Kidney	Transplant (JH)			Import	1	1
05/18/2020	AHEM016	CTOP - LifeChoice Donor Services	Liver/L Kidney	Transplant (UM)			Flyout	1	1
05/18/2020	AHEQ468	CADN - California Transplant Donor Network	R Kidney	Transplant (JH)			Import	1	1
05/19/2020	AHEP251	KYDA - Kentucky Organ Donor Affiliates	Liver/L Kidney	Transplant (UM)			Flyout	1	1
05/22/2020	AHES091	TXSB - Southwest Transplant Alliance	R Kidney	Transplant (UM)			Import	1	1
05/23/2020	AHET025	PADV - Gift of Life Donor Program	L Kidney	Transplant (UM)			Import	1	1
05/23/2020	AHET083	CAOP - OneLegacy	L Kidney	Transplant (UM)			Import	1	1
05/24/2020	AHEW050	NJTO - New Jersey Organ and Tissue Sharing Network OPO	L Kidney	Transplant (JH)			Import	1	1
05/24/2020	AHEW050	NJTO - New Jersey Organ and Tissue Sharing Network OPO	R Kidney	Transplant (JH)			Import	1	1
05/26/2020	AHEX296	PATF - Center for Organ Recovery and Education	R Kidney	Transplant (UM)			Import	1	1
05/28/2020	AHE1257	PADV - Gift of Life Donor Program	L Kidney	Transplant (JH)			Import	1	1
05/28/2020	AHE1257	PADV - Gift of Life Donor Program	R Kidney	Transplant (UM)			Import	1	1
05/28/2020	AHEY052	TXSB - Southwest Transplant Alliance	L Kidney	Transplant (JH)			Import	1	1
05/30/2020	AHE3061	PATF - Center for Organ Recovery and Education	R Kidney	Transplant (JH)			Import	1	1
05/31/2020	AHE3206	AROR - Arkansas Regional Organ Recovery Agency	R Kidney	Transplant (JH)			Import	1	1
06/03/2020	AHE5222	MIOP - Gift of Life Michigan	R Kidney	Transplant (JH)			Import	1	1
06/05/2020	AHE5491	WIUW - Organ Procurement Organization at the University of Wisconsin	L Kidney	Transplant (UM)			Import	1	1
06/05/2020	AHFD390	PADV - Gift of Life Donor Program	R Kidney/Panc	Transplant (JH)			Import	1	1
06/07/2020	AHFD047	TXGC - LifeGift Organ Donation Center	R Kidney	Transplant (JH)			Import	1	1
06/08/2020	AHFG401	PADV - Gift of Life Donor Program	R Kidney	Transplant (UM)			Import	1	1
06/16/2020	AHFN027	CORS - Donor Alliance	L Kidney	Transplant (JH)			Import	1	1
06/23/2020	AHFV241	NCNC - Carolina Donor Services	R Kidney	Declined	Declined post import for anatomy/poor flush	Medical Waste	Import	1	0
06/24/2020	AHFT093	CTOP - LifeChoice Donor Services	R Kidney	Transplant (JH)			Import	1	1
06/24/2020	AHFU263	INOP - Indiana Organ Procurement Organization	L Kidney	Transplant (JH)			Import	1	1
06/26/2020	AHFS293	PADV - Gift of Life Donor Program	Kidney	Declined	Anatomical abnormalities		Import	1	0
06/28/2020	AHFZ303	TXGC - LifeGift Organ Donation Center	L Kidney	Transplant (JH)			Import	1	1
06/29/2020	AHFZ159	PADV - Gift of Life Donor Program	Kidney	Declined Prior to Import	Poor organ function		Import	0	0
07/01/2020	AHF2319	PATF - Center for Organ Recovery and Education	R Kidney	Transplant (JH)			Import	1	1
07/03/2020	AHF3157	TXSB - Southwest Transplant Alliance	L Kidney	Transplant (JH)			Import	1	1
07/03/2020	AHF3157	TXSB - Southwest Transplant Alliance	R Kidney	Declined	Anatomical abnormalities	Medical Waste	Import	1	0
07/04/2020	AHGD421	WIUW - Organ Procurement Organization at the University of Wisconsin	L Kidney	Transplant (JH)			Import	1	1
07/05/2020	AHGD209	PATF - Center for Organ Recovery and Education	L Kidney	Declined	Biopsy findings	Research	Import	1	0
07/05/2020	AHGD209	PATF - Center for Organ Recovery and Education	R Kidney	Declined	Biopsy findings	Research	Import	1	0

2020 Local Organ Disposition Report

Run Date: 8/4/2021 12:32:45 PM

UNOS ID	Hospital	R Ki	L Ki	D/E Ki	# Recovered with Intent to Transplant	# Kidney transplanted	# of kidney MW	XC
AHDM154	UMMC	MDJH	MDUM	N/A	2	2	0	04/16/2020 12:44
AHDM220	SHB	MDUM	MDUM	N/A	2	2	0	04/17/2020 18:58
AHDP307	CCUH	MDUM	LLF	N/A	2	1	0	04/20/2020 14:56
AHDW461	UMMC	MDUM	MDUM	N/A	2	2	0	04/26/2020 11:03
AHD1106	JHBMC	MDJH	MDUM	N/A	2	2	0	04/30/2020 12:16
AHD3052	FHH	N/A	N/A	MDJH	2	2	0	05/01/2020 20:29
AHD3045	MRMC	NR	NR	N/A	0	0	0	05/02/2020 11:16
AHEC136	SHB	MDJH	MDJH	N/A	2	2	0	05/05/2020 15:36
AHEC317	UPMCWV	LLF	LLF	N/A	2	0	0	05/06/2020 10:05
AHED210	PRMC	LLF	LLF	N/A	2	0	0	05/06/2020 15:16
AHED095	SAH	MW	MW	N/A	2	0	2	05/07/2020 08:55
AHEE447	UMMC	MW	MDUM	N/A	2	1	1	05/08/2020 10:54
AHEN494	AAMC	MW	MW	N/A	2	0	2	05/16/2020 10:07
AHEP027	SHB	MDUM	MDJH	N/A	2	2	0	05/18/2020 11:33
AHER066	BWMC	MDUM	MDUM	N/A	2	2	0	05/20/2020 17:40
AHES145	SHB	LLF	LLF	N/A	2	0	0	05/21/2020 12:14
AHES454	UPMCWV	MW	MW	N/A	2	0	2	05/22/2020 06:51
AHE3488	UMMC	MDUM	MDJH	N/A	2	2	0	06/01/2020 10:13
AHES313	SHB	MW	NJHK	N/A	2	1	1	06/02/2020 16:25
AHFA316	MHE	NR	NR	N/A	0	0	0	06/03/2020 16:02
AHFK443	UMMC	MW	MW	N/A	2	0	2	06/14/2020 16:22
AHFO375	UMMC	MDJH	MDUM	N/A	2	2	0	06/17/2020 11:17
AHFO453	BWMC	MDJH	MDJH	N/A	2	2	0	06/18/2020 11:01
AHFQ419	JHBMC	LLF	LLF	N/A	2	0	0	06/19/2020 10:45
AHFS104	UMMC	MDUM	MDJH	N/A	2	2	0	06/19/2020 19:48
AHFU183	FSHC	LLF	LLF	N/A	2	0	0	06/25/2020 17:09
AHFZ323	MHE	LLF	MDJH	N/A	2	1	0	06/28/2020 11:50
AHF2362	FSHC	LLF	LLF	N/A	2	0	0	06/30/2020 09:58
AHF4103	UCMC	MDUM	MDJH	N/A	2	2	0	07/02/2020 16:03
AHGF232	MHE	LLF	LLF	N/A	2	0	0	07/07/2020 14:32
AHGI373	UMMC	MDUM	MDJH	N/A	2	2	0	07/11/2020 18:45
AHGK221	AAMC	MDJH	MDJH	N/A	2	2	0	07/14/2020 12:49
AHGM286	SHB	MDJH	MDJH	N/A	2	2	0	07/16/2020 11:56
AHGU386	MRMC	NYUC	MDUM	N/A	2	2	0	07/22/2020 12:44
AHGU370	BWMC	MDJH	MDJH	N/A	2	2	0	07/24/2020 19:33
AHGX421	JHH	MW	MW	N/A	2	0	2	07/26/2020 14:16
AHGZ094	SAH	NJSB	MDUM	N/A	2	2	0	07/29/2020 10:54
AHG3328	UMMC	MW	Promethera	N/A	2	0	1	08/02/2020 10:36
AHHD412	FSHC	MDJH	MDJH	N/A	2	2	0	08/07/2020 14:40
AHHF410	HMH	MDJH	INIM	N/A	2	2	0	08/08/2020 23:34
AHHK447	JHH	MDJH	MDJH	N/A	2	2	0	08/12/2020 09:01
AHHM045	PRMC	MDUM	MDUM	N/A	2	2	0	08/14/2020 20:47
AHHL285	UMMC	DCGW	MDJH	N/A	2	2	0	08/15/2020 10:51
AHHR460	SHB	MDUM	MDJH	N/A	2	2	0	08/19/2020 17:15
AHHR470	AAMC	MDJH	MDJH	N/A	2	2	0	08/20/2020 14:06
AHHT489	JHH	MDJH	MDUM	N/A	2	2	0	08/23/2020 15:01
AHHW143	FSHC	MDJH	MDJH	N/A	2	2	0	08/25/2020 15:34
AHH4107	UMMC	MW	MW	N/A	2	0	2	08/31/2020 13:14
AHH4172	JHH	N/A	N/A	MDJH	2	2	0	09/01/2020 13:02

2020 Organ Imports Report

XC Date	UNOS ID	Donor OPO	Organ	Disposition	Reason not Txpd	Disp if not Txpd	Import Flyout	# of Kidney Imported Imp	# of Kidney transplanted Imp
07/07/2020	AHGE094	PATF - Center for Organ Recovery and Education	L Kidney/Panc	Transplant (UM)			Import	1	1
07/07/2020	AHGE326	NCNC - Carolina Donor Services	L Kidney	Transplant (JH)			Import	1	1
07/08/2020	AHF4283	VATB - LifeNet Health	L Kidney/Panc	Transplant (UM)			Import	1	1
07/08/2020	AHGD482	WALC - LifeCenter Northwest Organ Donation Network	L Kidney	Transplant (JH)			Import	1	1
07/09/2020	AHGH130	PATF - Center for Organ Recovery and Education	L Kidney	Transplant (JH)			Import	1	1
07/09/2020	AHGH130	PATF - Center for Organ Recovery and Education	R Kidney	Transplant (UM)			Import	1	1
07/09/2020	AHGH242	ILIP - Gift of Hope Organ & Tissue Donor Network	L Kidney	Transplant (UM)			Import	1	1
07/11/2020	AHGI107	TXSB - Southwest Transplant Alliance	R Kidney	Transplant (JH)			Import	1	1
07/16/2020	AHGN036	CASD - Lifesharing Community Organ & Tissue Donation	L Kidney	Declined	Anatomical abnormalities	Medical Waste	Import	1	0
07/16/2020	AHGN414	DCTC - Washington Regional Transplant Consortium	Kidney	Transplant (UM)			Import	1	1
07/18/2020	AHGN153	PATF - Center for Organ Recovery and Education	Kidney	High PRA	crossmatch positive		Import	0	0
07/18/2020	AHGN493	MAOB - New England Organ Bank	L Kidney	Declined	Biopsy findings	Medical Waste	Import	1	0
07/18/2020	AHGQ125	VATB - LifeNet Health	L Kidney	Transplant (JH)			Import	1	1
07/24/2020	AHGT373	OHLC - Life Connection of Ohio	R Kidney	Declined	target pt declined		Import	1	0
07/30/2020	AHGZ228	PADV - Gift of Life Donor Program	L Kidney	Transplant (UM)			Import	1	1
07/30/2020	AHGZ228	PADV - Gift of Life Donor Program	R Kidney	Transplant (UM)			Import	1	1
07/31/2020	AHGW084	NYRT - New York Organ Donor Network	R Kidney	Transplant (JH)			Import	1	1
08/01/2020	AHG5458	MWOB - Midwest Transplant Network	L Kidney	Transplant (UM)			Import	1	1
08/05/2020	AHHC463	PADV - Gift of Life Donor Program	L Kidney	Transplant (UM)			Import	1	1
08/05/2020	AHHD022	PADV - Gift of Life Donor Program	L Kidney	Declined	Organ not as described	Returned to OPO	Import	1	0
08/07/2020	AHHD388	AROR - Arkansas Regional Organ Recovery Agency	R Kidney/Panc	Transplant (UM)			Import	1	1
08/07/2020	AHHE392	MOMA - Mid-America Transplant Services	R Kidney	Transplant (JH)			Import	1	1
08/09/2020	AHGG366	NYFL - Finger Lakes Donor Recovery Program	Liver/L Kidney	Transplant (UM)			Flyout	1	1
08/10/2020	AHHH024	LAOP - Louisiana Organ Procurement Agency	R Kidney	Transplant (JH)			Import	1	1
08/14/2020	AHHH343	CAOP - OneLegacy	R Kidney	Declined	Organ not kept cold	Medical Waste	Import	1	0
08/18/2020	AHHQ205	PADV - Gift of Life Donor Program	R Kidney	Transplant (JH)			Import	1	1
09/08/2020	AHIE234	MIOP - Gift of Life Michigan	L Kidney	Transplant (UM)			Import	1	1
09/08/2020	AHIE234	MIOP - Gift of Life Michigan	R Kidney	Transplant (UM)			Import	1	1
09/10/2020	AHII475	PADV - Gift of Life Donor Program	R Kidney	Transplant (JH)			Import	1	1
09/11/2020	AHIJ047	ORUO - Pacific Northwest Transplant Bank	R Kidney	Transplant (JH)			Import	1	1
09/12/2020	AHIJ357	ORUO - Pacific Northwest Transplant Bank	L Kidney	Transplant (JH)			Import	1	1
09/12/2020	AHIJ357	ORUO - Pacific Northwest Transplant Bank	R Kidney	Transplant (JH)			Import	1	1
09/15/2020	AHIL432	VATB - LifeNet Health	R Kidney	Transplant (UM)			Import	1	1
09/17/2020	AHIN049	OHLC - Life Connection of Ohio	L Kidney/Panc	Transplant (UM)			Import	1	1
09/17/2020	AHIP359	PATF - Center for Organ Recovery and Education	R Kidney	Transplant (JH)			Import	1	1
09/19/2020	AHIR013	TXGC - LifeGift Organ Donation Center	L Kidney	Transplant (JH)			Import	1	1
09/25/2020	AHIW369	INOP - Indiana Organ Procurement Organization	R Kidney	Transplant (JH)			Import	1	1
09/26/2020	AHIW044	FLWC - LifeLink of Florida	Kidney	Declined	Biopsy findings	Medical Waste	Import	1	0
09/27/2020	AHIY399	WALC - LifeCenter Northwest Organ Donation Network	R Kidney	Declined	Biopsy findings		Import	1	0
10/06/2020	AHJC170	TXGC - LifeGift Organ Donation Center	R Kidney	Transplant (JH)			Import	1	1
10/06/2020	AHJD190	PATF - Center for Organ Recovery and Education	Kidney	Declined	recipient refused CIT		Import	1	0
10/07/2020	AHJF017	PADV - Gift of Life Donor Program	R Kidney/Panc	Transplant (UM)			Import	1	1
10/10/2020	AHJG141	WIUW - Organ Procurement Organization at the University of Wisconsin	R Kidney	Transplant (JH)			Import	1	1
10/12/2020	AHJJ070	VATB - LifeNet Health	L Kidney	Transplant (UM)			Import	1	1
10/14/2020	AHJK254	IAOP - Iowa Donor Network	R Kidney	Transplant (JH)			Import	1	1
10/15/2020	AHJL097	TXGC - LifeGift Organ Donation Center	L Kidney	Declined	Biopsy findings	Medical Waste	Import	1	0
10/16/2020	AHJM185	TXGC - LifeGift Organ Donation Center	R Kidney	Transplant (JH)			Import	1	1
10/17/2020	AHJP298	WALC - LifeCenter Northwest Organ Donation Network	R Kidney	Declined	Anatomical abnormalities	Medical Waste	Import	1	0
10/17/2020	AHIP326	MWOB - Midwest Transplant Network	En-bloc Kidney	Transplant (JH)			Import	2	2
10/19/2020	AHJS414	FLFH - TransLife	L Kidney	Transplant (JH)			Import	1	1
10/22/2020	AHJI109	PADV - Gift of Life Donor Program	Kidney/Panc	Declined in OR	Organ trauma		Import	1	0

2020 Local Organ Disposition Report

Run Date: 8/4/2021 12:32:45 PM

UNOS ID	Hospital	R Ki	L Ki	D/E Ki	# Recovered with Intent to Transplant	# Kidney transplanted	# of kidney MW	XC
AHIG468	UMMC	MW	MW	N/A	2	0	2	09/09/2020 12:25
AHIH418	JHBMC	JHH	JHH	N/A	2	0	0	09/11/2020 13:28
AHIL411	FSHC	NR	NR	N/A	0	0	0	09/14/2020 19:57
AHIO234	UPMCWV	MW	MDUM	N/A	2	1	1	09/18/2020 14:16
AHIR201	CHC	MDUM	MDJH	N/A	2	2	0	09/21/2020 14:13
AHIU348	MRMC	MDJH	MDJH	N/A	2	2	0	09/23/2020 13:20
AHIW283	UMMC	MW	MW	N/A	2	0	2	09/25/2020 10:08
AHI3309	JHH	NR	NR	N/A	0	0	0	10/01/2020 17:08
AHI4115	PRMC	MDJH	MDUM	N/A	2	2	0	10/02/2020 23:17
AHJB420	CHC	JHH	JHH	N/A	2	0	0	10/04/2020 16:54
AHJD033	JHBMC	MDUM	MDJH	N/A	2	2	0	10/07/2020 00:59
AHJF026	UMMC	MDUM	MDJH	N/A	2	2	0	10/08/2020 20:22
AHJG017	HH	MDJH	MDJH	N/A	2	2	0	10/09/2020 02:41
AHJH232	PRMC	MW	MW	N/A	2	0	2	10/10/2020 11:52
AHJL178	JHBMC	MW	MW	N/A	2	0	2	10/14/2020 20:30
AHJL089	JHH	MDUM	MDUM	N/A	2	2	0	10/16/2020 00:20
AHJQ016	UMMC	NR	NR	N/A	0	0	0	10/19/2020 11:03
AHJS359	UMMC	MDUM	MDJH	N/A	2	2	0	10/20/2020 09:42
AHJV126	SHB	NR	NR	N/A	0	0	0	10/25/2020 01:14
AHJV412	UMMC	VAFH	MDJH	N/A	2	2	0	10/25/2020 10:37
AHJ3462	UMMC	VAFH	MDUM	N/A	2	2	0	11/01/2020 11:06
AHKA046	UMMC	MDJH	MDJH	N/A	2	2	0	11/03/2020 10:57
AHKA122	UMH	MDUM	MDUM	N/A	2	2	0	11/04/2020 16:15
AHKC337	UMMC	MDJH	MDJH	N/A	2	2	0	11/05/2020 11:09
AHKE178	UMMC	MDJH	MDJH	N/A	2	2	0	11/07/2020 09:31
AHKE260	BWMC	MDJH	MDJH	N/A	2	2	0	11/08/2020 12:31
AHKF248	JHBMC	DCGU	MDJH	N/A	2	2	0	11/09/2020 15:57
AHKK088	AAMC	SCMU	MDJH	N/A	2	2	0	11/12/2020 08:37
AHKJ148	GSH	MW	MDUM	N/A	2	1	1	11/12/2020 16:31
AHKK099	HCGH	MDUM	MDJH	N/A	2	2	0	11/13/2020 11:09
AHKJ103	AAMC	MDJH	MDJH	N/A	2	2	0	11/13/2020 16:33
AHKK142	MRMC	NJHK	MDJH	N/A	2	2	0	11/14/2020 10:50
AHKN432	UMMC	MDUM	MDJH	N/A	2	2	0	11/16/2020 15:33
AHKR217	UMMC	DCGW	MDJH	N/A	2	2	0	11/20/2020 10:33
AHKS133	SJMC	MDUM	MDUM	N/A	2	2	0	11/20/2020 19:11
AHKT263	JHH	MDJH	MDUM	N/A	2	2	0	11/22/2020 14:30
AHKW235	MHE	MDJH	MDUM	N/A	2	2	0	11/25/2020 10:04
AHKW445	PRMC	MDJH	MDJH	N/A	2	2	0	11/25/2020 14:42
AHKY064	MRMC	MDJH	MDJH	N/A	2	2	0	11/27/2020 09:43
AHKZ135	MRMC	MDUM	MDJH	N/A	2	2	0	11/29/2020 18:27
AHK3379	HMH	MDJH	MDJH	N/A	2	2	0	12/01/2020 10:12
AHK2218	PRMC	MW	MDUM	N/A	2	1	1	12/01/2020 11:27
AHLA089	UMMC	MDJH	MDJH	N/A	2	2	0	12/03/2020 11:13
AHK4476	JHBMC	MW	MW	N/A	2	0	2	12/03/2020 14:51
AHLB307	SHB	MDUM	MDJH	N/A	2	2	0	12/05/2020 10:35
AHLO292	FSHC	MW	MW	N/A	2	0	2	12/18/2020 12:58
AHLR320	UMMC	MW	MW	N/A	2	0	2	12/21/2020 17:33
AHLT358	FSHC	MDJH	MDJH	N/A	2	2	0	12/23/2020 10:23
AHLT261	MRMC	TXJS	MDJH	N/A	2	2	0	12/24/2020 03:44
AHLZ458	FSHC	MDUM	MDUM	N/A	2	2	0	12/30/2020 10:09

2020 Organ Imports Report

XC Date	UNOS ID	Donor OPO	Organ	Disposition	Reason not Txpd	Disp if not Txpd	Import Flyout	# of Kidney Imported Imp	# of Kidney transplanted Imp
10/23/2020	AHJV323	NCCM - Lifeshare of the Carolinas	R Kidney	Transplant (JH)			Import	1	1
10/30/2020	AHJ2073	PATF - Center for Organ Recovery and Education	L Kidney/Panc	Transplant (JH)			Import	1	1
10/30/2020	AHJZ355	OKOP - LifeShare Transplant Donor Services of Oklahoma	R Kidney	Transplant (JH)			Import	1	1
11/02/2020	AHJ4342	VATB - LifeNet Health	R Kidney	Transplant (JH)			Import	1	1
11/03/2020	AHJ5279	TNDS - Tennessee Donor Services	Liver/L Kidney	Transplant (JH)			Flyout	1	1
11/03/2020	AHKB166	PATF - Center for Organ Recovery and Education	L Kidney	Transplant (JH)			Import	1	1
11/05/2020	AHKA322	DCTC - Washington Regional Transplant Consortium	Kidney/Panc	Declined Prior to Import	Recipient determined to be unsuitable for TX in OR		Import	0	0
11/05/2020	AHKC275	PADV - Gift of Life Donor Program	R Kidney	Transplant (JH)			Import	1	1
11/05/2020	AHKD250	TNDS - Tennessee Donor Services	R Kidney	Transplant (JH)			Import	1	1
11/09/2020	AHKG191	TNDS - Tennessee Donor Services	L Kidney	Declined	CIT	Returned to OPO	Import	1	0
11/09/2020	AHKI110	PADV - Gift of Life Donor Program	R Kidney	Transplant (JH)			Import	1	1
11/14/2020	AHKJ131	DCTC - Washington Regional Transplant Consortium	L Kidney	Transplant (JH)			Import	1	1
11/18/2020	AHKO123	OHLP - Lifeline of Ohio	Heart/R Kidney	Transplant (JH)			Flyout	1	1
11/24/2020	AHKW078	PADV - Gift of Life Donor Program	Kidney	High PRA			Import	0	0
11/25/2020	AHKV016	TNDS - Tennessee Donor Services	Heart/L Kidney	Transplant (JH)			Flyout	1	1
11/25/2020	AHKV162	FLUF - LifeQuest Organ Recovery Services	R Kidney	Transplant (JH)			Import	1	1
11/28/2020	AHK2489	PADV - Gift of Life Donor Program	L Kidney	Transplant (JH)			Import	1	1
11/30/2020	AHK2252	MAOB - New England Organ Bank	Kidney	Declined Prior to Import	quality	Medical Waste	Import	0	0
12/03/2020	AHLA028	FLFH - TransLife	L Kidney	Transplant (UM)			Import	1	1
12/03/2020	AHLA028	FLFH - TransLife	R Kidney	Transplant (JH)			Import	1	1
12/04/2020	AHLB344	PADV - Gift of Life Donor Program	R Kidney	Transplant (UM)			Import	1	1
12/04/2020	AHLC057	KYDA - Kentucky Organ Donor Affiliates	L Kidney	Declined Prior to Import	No recipient located-list exhausted		Import	0	0
12/08/2020	AHLF079	PADV - Gift of Life Donor Program	R Kidney	Transplant (UM)			Import	1	1
12/09/2020	AHLG260	MNOP - LifeSource Upper Midwest Organ Procurement Organization	L Kidney	Transplant (JH)			Import	1	1
12/09/2020	AHLG407	GALL - LifeLink of Georgia	R Kidney/Panc	Transplant (UM)			Import	1	1
12/11/2020	AHLI006	VATB - LifeNet Health	L Kidney	Declined	Biopsy findings	Medical Waste	Import	1	0
12/11/2020	AHLJ054	PADV - Gift of Life Donor Program	L Kidney	Transplant (JH)			Import	1	1
12/11/2020	AHLJ054	PADV - Gift of Life Donor Program	R Kidney	Transplant (JH)			Import	1	1
12/12/2020	AHLJ469	TXGC - LifeGift Organ Donation Center	Kidney	High PRA			Import	0	0
12/13/2020	AHLJ188	PADV - Gift of Life Donor Program	L Kidney	Transplant (JH)			Import	1	1
12/14/2020	AHLL243	KYDA - Kentucky Organ Donor Affiliates	L Kidney	Transplant (JH)			Import	1	1
12/15/2020	AHLK384	DCTC - Washington Regional Transplant Consortium	Kidney/Panc	Declined Prior to Import	Positive XM		Import	0	0
12/15/2020	AHLM072	MSOP - Mississippi Organ Recovery Agency	R Kidney	Transplant (JH)			Import	1	1
12/17/2020	AHLN031	NCCM - Lifeshare of the Carolinas	R Kidney	Transplant (JH)			Import	1	1
12/24/2020	AHLU240	PATF - Center for Organ Recovery and Education	R Kidney	Transplant (JH)			Import	1	1
12/27/2020	AHLY495	FLWC - LifeLink of Florida	L Kidney	Transplant (JH)			Import	1	1
12/28/2020	AHLV389	CTOP - LifeChoice Donor Services	L Kidney	Declined	rcpt instability	Returned to OPO	Import	1	0
12/29/2020	AHL2255	VATB - LifeNet Health	L Kidney	Transplant (UM)			Import	1	1
12/31/2020	AHL1380	IAOP - Iowa Donor Network	R Kidney/Panc	Transplant (UM)			Import	1	1
12/31/2020	AHL3247	MWOB - Midwest Transplant Network	L Kidney	Transplant (JH)			Import	1	1

2020 Local Organ Disposition Report

Run Date: 8/4/2021 12:32:45 PM

UNOS ID	Hospital	R Ki	L Ki	D/E Ki	# Recovered with Intent to Transplant	# Kidney transplanted	# of kidney MW	XC
---------	----------	------	------	--------	---------------------------------------	-----------------------	----------------	----

2021 Jan - June Organ Imports Report

XC Date	UNOS ID	Donor OPO	Organ	Disposition	Reason not Txpd	Disp if not Txpd	Import Flyout	# of Kidney Imported Imp	# of Kidney transplanted Imp
01/05/2021	AIAC306	DCTC - Washington Regional Transplant Consortium	L Kidney	Transplant (JH)			Import	1	1
01/05/2021	AIAD115	TNDS - Tennessee Donor Services	L Kidney	Declined	Anatomical abnormalities	Medical Waste	Import	1	0
01/05/2021	AIAD115	TNDS - Tennessee Donor Services	R Kidney	Transplant (JH)			Import	1	1
01/08/2021	AIAE339	FLUF - LifeQuest Organ Recovery Services	R Kidney	Transplant (JH)			Import	1	1
01/11/2021	AIAI085	MAOB - New England Organ Bank	L Kidney/Panc	Transplant (UM)			Import	1	1
01/13/2021	AIAL124	MOMA - Mid-America Transplant Services	L Kidney	Transplant (JH)			Import	1	1
01/14/2021	AIAL456	NJTO - New Jersey Organ and Tissue Sharing Network OPO	Kidney	Declined Prior to Import	Poor organ function		Import	0	0
01/14/2021	AIAL490	KYDA - Kentucky Organ Donor Affiliates	R Kidney	Transplant (JH)			Import	1	1
01/16/2021	AIAM114	IAOP - Iowa Donor Network	L Kidney	Transplant (JH)			Import	1	1
01/18/2021	AIK090	TNDS - Tennessee Donor Services	L Kidney	Declined	Biopsy findings	Medical Waste	Import	1	0
01/18/2021	AIAP249	KYDA - Kentucky Organ Donor Affiliates	L Kidney	Transplant (JH)			Import	1	1
01/27/2021	AIAY302	PATF - Center for Organ Recovery and Education	R Kidney	Transplant (UM)			Import	1	1
01/28/2021	AIA2318	NYAP - Center for Donation and Transplant	R Kidney	Transplant (JH)			Import	1	1
02/02/2021	AIBA251	PADV - Gift of Life Donor Program	L Kidney	Declined	Organ anatomy too complex to reconstruct for transplant	Returned to OPO	Import	1	0
02/02/2021	AIBA251	PADV - Gift of Life Donor Program	R Kidney	Transplant (JH)			Import	1	1
02/07/2021	AIBD345	NJTO - New Jersey Organ and Tissue Sharing Network OPO	R Kidney	Transplant (UM)			Import	1	1
02/08/2021	AIBG245	OHLC - Life Connection of Ohio	L Kidney	Declined	Anatomical abnormalities	Medical Waste	Import	1	0
02/09/2021	AIBD271	NYRT - New York Organ Donor Network	L Kidney	Transplant (JH)			Import	1	1
02/10/2021	AIBE243	NJTO - New Jersey Organ and Tissue Sharing Network OPO	R Kidney	Transplant (JH)			Import	1	1
02/11/2021	AIBI274	PATF - Center for Organ Recovery and Education	R Kidney	Transplant (JH)			Import	1	1
02/14/2021	AIBK012	MIOP - Gift of Life Michigan	L Kidney	Transplant (JH)			Import	1	1
02/14/2021	AIBL066	FLFH - TransLife	L Kidney	Transplant (JH)			Import	1	1
02/18/2021	AIBP146	TNDS - Tennessee Donor Services	L Kidney	Transplant (JH)			Import	1	1
02/20/2021	AIBR016	FLUF - LifeQuest Organ Recovery Services	L Kidney	Transplant (JH)			Import	1	1
02/21/2021	AIBS050	FLWC - LifeLink of Florida	R Kidney	Declined	Biopsy findings	Medical Waste	Import	1	0
02/21/2021	AIBS144	FLWC - LifeLink of Florida	R Kidney	Transplant (JH)			Import	1	1
02/22/2021	AIBS155	PATF - Center for Organ Recovery and Education	L Kidney	Declined Prior to Import	Poor Pump Numbers +XM		Import	0	0
02/24/2021	AIBS395	MAOB - New England Organ Bank	Kidney	Declined Prior to Import			Import	0	0
02/24/2021	AIBU108	GALL - LifeLink of Georgia	L Kidney	Transplant (JH)			Import	1	1
02/24/2021	AIBX468	PATF - Center for Organ Recovery and Education	R Kidney	Declined	Anatomical abnormalities	Medical Waste	Import	1	0
02/27/2021	AIBX221	TNDS - Tennessee Donor Services	Kidney/Panc	Declined Prior to Import	pt not ready		Import	0	0
03/05/2021	AICB352	PADV - Gift of Life Donor Program	L Kidney/Panc	Transplant (UM)			Import	1	1
03/17/2021	AICM423	PADV - Gift of Life Donor Program	Kidney	Declined Prior to Import	not suitable for recipient		Import	0	0
03/17/2021	AICM423	PADV - Gift of Life Donor Program	R Kidney/Panc	Transplant (UM)			Import	1	1
03/18/2021	AICP107	NCNC - Carolina Donor Services	R Kidney	Transplant (JH)			Import	1	1
03/22/2021	AICT166	KYDA - Kentucky Organ Donor Affiliates	Heart/R Kidney	Transplant (JH)			Flyout	1	1
03/22/2021	AICT034	PADV - Gift of Life Donor Program	R Kidney	Transplant (UM)			Import	1	1
03/23/2021	AICV284	ILIP - Gift of Hope Organ & Tissue Donor Network	L Kidney	Transplant (JH)			Import	1	1
03/25/2021	AICX216	PADV - Gift of Life Donor Program	L Kidney	Transplant (UM)			Import	1	1
03/26/2021	AICZ479	LAOP - Louisiana Organ Procurement Agency	L Kidney	Transplant (JH)			Import	1	1
03/26/2021	AICZ479	LAOP - Louisiana Organ Procurement Agency	R Kidney	Declined	Too old on ice	Medical Waste	Import	1	0
03/27/2021	AICZ257	AZOB - Donor Network of Arizona	L Kidney	Transplant (JH)			Import	1	1
03/27/2021	AICZ433	DCTC - Washington Regional Transplant Consortium	R Kidney	Transplant (UM)			Import	1	1
03/30/2021	AIC1487	NYFL - Finger Lakes Donor Recovery Program	R Kidney	Declined	Recipient determined to be unsuitable for TX in OR	Returned to OPO	Import	1	0
03/31/2021	AIC3492	NYRT - New York Organ Donor Network	L Kidney	Declined	Recipient determined to be unsuitable for TX in OR	Returned to OPO	Import	1	0

2021 Local Organ Disposition Report

Run Date: 8/4/2021 12:57:25 PM

UNOS ID	Hospital	R Ki	L Ki	D/E Ki	# Recovered with Intent to Transplant	# Kidney transplanted	# of kidney MW	XC
AIAA061	UMMC	MDUM	MDUM	N/A	2	2	0	01/04/2021 11:17
AIAB354	HCGH	MW	MW	N/A	2	0	2	01/06/2021 13:25
AIAF323	SAH	MDJH	MDUM	N/A	2	2	0	01/08/2021 11:48
AIAG478	BWMC	MDJH	MDUM	N/A	2	2	0	01/09/2021 16:24
AIAH044	UMMC	MDJH	TXHS	N/A	2	2	0	01/10/2021 11:48
AIAH193	MRMC	MDUM	MDUM	N/A	2	2	0	01/10/2021 22:30
AIAJ040	UMMC	NJHK	PATJ	N/A	2	2	0	01/13/2021 10:51
AIAP056	UPMCWCM	MW	MDUM	N/A	2	1	1	01/18/2021 11:23
AIAQ457	UMH	NR	NR	N/A	0	0	0	01/19/2021 09:55
AIAQ496	SHB	MDJH	MDUM	N/A	2	2	0	01/19/2021 22:40
AIAS076	BWMC	Promethera	NR	N/A	1	0	0	01/21/2021 15:14
AIAW294	UMMC	NR	MDJH	N/A	1	1	0	01/26/2021 10:46
AIAZ467	FHH	MDUM	MDJH	N/A	2	2	0	01/30/2021 14:47
AIA2489	UMMC	MDUM	NJSB	N/A	2	2	0	01/30/2021 20:50
AIBB080	HMH	MDJH	MDUM	N/A	2	2	0	02/04/2021 16:17
AIBC414	UMMC	MW	MW	N/A	2	0	2	02/07/2021 14:17
AIBG389	FHH	MDUM	UMMS	N/A	2	1	0	02/09/2021 09:49
AIBN270	MRMC	MDJH	MDUM	N/A	2	2	0	02/16/2021 09:27
AIBX332	JHH	NR	NR	N/A	0	0	0	02/26/2021 02:48
AIBW309	UPMCWCM	MDJH	MDJH	N/A	2	2	0	02/26/2021 12:21
AIBX268	BWMC	MW	MW	N/A	2	0	2	02/26/2021 13:55
AIBY197	UMMC	MDJH	MDUM	N/A	2	2	0	02/27/2021 09:43
AIBY260	MRMC	MDUM	MDJH	N/A	2	2	0	02/28/2021 14:34
AIB1098	UPMCWCM	MDUM	MDUM	N/A	2	2	0	02/28/2021 20:17
AIB2223	PRMC	MW	MW	N/A	2	0	2	03/02/2021 10:44
AICA496	UMMC	N/A	N/A	MDJH	2	2	0	03/03/2021 09:57
AICC080	FHH	MDJH	NCDU	N/A	2	2	0	03/06/2021 14:38
AICF471	UMMC	DCGU	MDUM	N/A	2	2	0	03/08/2021 10:24
AICE207	UPMCWCM	MDJH	MDUM	N/A	2	2	0	03/08/2021 11:50
AICJ344	UMMC	NJHK	MDUM	N/A	2	2	0	03/13/2021 12:02
AICN239	SHB	MDJH	MW	N/A	2	1	1	03/17/2021 12:07
AICN155	UMMC	PAGM	NYMA	N/A	2	2	0	03/18/2021 02:48
AICP167	SHB	MW	MW	N/A	2	0	2	03/18/2021 11:35
AICO194	UMMC	MDJH	NYNS	N/A	2	2	0	03/18/2021 12:16
AICO420	UMMC	SCMU	MDUM	N/A	2	2	0	03/19/2021 10:49
AICQ340	AAMC	MW	MW	N/A	2	0	2	03/19/2021 16:40
AICQ074	JHH	MDJH	MDUM	N/A	2	2	0	03/20/2021 15:35
AICS444	NWHC	VAMC	VAMC	N/A	2	2	0	03/21/2021 18:31
AICR337	FSHC	MW	MW	N/A	2	0	2	03/22/2021 17:24
AICU156	HCGH	CTYN	DCGU	N/A	2	2	0	03/24/2021 07:28
AICW334	UCMC	MW	MW	N/A	2	0	2	03/26/2021 14:00
AICY090	JHH	PAGM	MDJH	N/A	2	2	0	03/28/2021 21:54
AIC1342	FSHC	MW	NYUC	N/A	2	1	1	03/30/2021 12:06
AIC4355	FHH	VAMC	MDJH	N/A	2	2	0	04/01/2021 17:34
AIDA362	JHBMC	MW	MW	N/A	2	0	2	04/03/2021 09:44

2021 Jan - June Organ Imports Report

XC Date	UNOS ID	Donor OPO	Organ	Disposition	Reason not Txp	Disp if not Txp	Import Flyout	# of Kidney Imported Imp	# of Kidney transplanted Imp
04/02/2021	AIC5200	VATB - LifeNet Health	R Kidney	Transplant (JH)			Import	1	1
04/03/2021	AIDB373	PADV - Gift of Life Donor Program	L Kidney	Transplant (UM)			Import	1	1
04/05/2021	AIDD080	PATF - Center for Organ Recovery and Education	R Kidney	Transplant (UM)			Import	1	1
04/09/2021	AIDG117	NCNC - Carolina Donor Services	L Kidney	Transplant (JH)			Import	1	1
04/09/2021	AIDG402	DCTC - Washington Regional Transplant Consortium	L Kidney	Declined	recipients not ready	Re-allocated	Import	1	0
04/10/2021	AIDG119	PADV - Gift of Life Donor Program	Kidney	Declined Prior to Import	Donor Medical history		Import	0	0
04/11/2021	AID418	PADV - Gift of Life Donor Program	L Kidney	Transplant (UM)			Import	1	1
04/11/2021	AIDK104	PADV - Gift of Life Donor Program	L Kidney	Transplant (UM)			Import	1	1
04/11/2021	AID418	PADV - Gift of Life Donor Program	R Kidney	Transplant (UM)			Import	1	1
04/12/2021	AIDJ285	DCTC - Washington Regional Transplant Consortium	L Kidney	Transplant (JH)			Import	1	1
04/12/2021	AIDJ030	DCTC - Washington Regional Transplant Consortium	R Kidney	Transplant (JH)			Import	1	1
04/13/2021	AIDK123	PATF - Center for Organ Recovery and Education	Kidney	Declined Prior to Import	Donor Medical history		Import	0	0
04/13/2021	AIDJ188	DCTC - Washington Regional Transplant Consortium	R Kidney	Transplant (JH)			Import	1	1
04/16/2021	AIDM206	NYRT - New York Organ Donor Network	L Kidney	Transplant (JH)			Import	1	1
04/17/2021	AIDO061	NYFL - Finger Lakes Donor Recovery Program	R Kidney	Transplant (JH)			Import	1	1
04/17/2021	AIDO436	PADV - Gift of Life Donor Program	R Kidney	Transplant (JH)			Import	1	1
04/17/2021	AIDP425	NCNC - Carolina Donor Services	R Kidney	Transplant (JH)			Import	1	1
04/18/2021	AIDP250	TNDS - Tennessee Donor Services	L Kidney	Transplant (JH)			Import	1	1
04/22/2021	AIDQ365	PADV - Gift of Life Donor Program	L Kidney	Transplant (UM)			Import	1	1
04/22/2021	AIDU044	PATF - Center for Organ Recovery and Education	R Kidney	Transplant (UM)			Import	1	1
04/23/2021	AIDU314	MNOP - LifeSource Upper Midwest Organ Procurement Organization	L Kidney	Transplant (JH)			Import	1	1
04/23/2021	AIDT292	TXSB - Southwest Transplant Alliance	L Kidney/Panc	Transplant (UM)			Import	1	1
04/23/2021	AIDS414	MAOB - New England Organ Bank	R Kidney	Transplant (JH)			Import	1	1
04/24/2021	AIDT471	NYRT - New York Organ Donor Network	R Kidney	Transplant (UM)			Import	1	1
04/25/2021	AIDS159	PADV - Gift of Life Donor Program	Kidney	Declined Prior to Import	XM results		Import	0	0
04/26/2021	AIDX243	AZOB - Donor Network of Arizona	L Kidney	Transplant (JH)			Import	1	1
04/27/2021	AID1466	PADV - Gift of Life Donor Program	L Kidney	Transplant (UM)			Import	1	1
04/27/2021	AID1466	PADV - Gift of Life Donor Program	R Kidney	Declined Prior to Import	CIT and no recipient located		Import	0	0
04/28/2021	AIDW143	PADV - Gift of Life Donor Program	L Kidney	Transplant (JH)			Import	1	1
04/29/2021	AIDZ335	VATB - LifeNet Health	Kidney/Panc	Declined Prior to Import	Donor Medical history		Import	0	0
04/29/2021	AID1032	NCNC - Carolina Donor Services	L Kidney	Transplant (JH)			Import	1	1
04/29/2021	AID1268	NYRT - New York Organ Donor Network	L Kidney	Transplant (JH)			Import	1	1
04/29/2021	AIDZ335	VATB - LifeNet Health	R Kidney	Transplant (JH)			Import	1	1
05/01/2021	AID2428	NCCM - Lifeshare of the Carolinas	L Kidney	Transplant (JH)			Import	1	1
05/03/2021	AIEB237	PADV - Gift of Life Donor Program	L Kidney	Transplant (JH)			Import	1	1
05/04/2021	AIEA034	NJTO - New Jersey Organ and Tissue Sharing Network OPO	L Kidney	Transplant (UM)			Import	1	1
05/04/2021	AIEA378	DCTC - Washington Regional Transplant Consortium	L Kidney	Transplant (JH)			Import	1	1
05/04/2021	AIEA378	DCTC - Washington Regional Transplant Consortium	R Kidney	Transplant (JH)			Import	1	1
05/05/2021	AIEC468	PATF - Center for Organ Recovery and Education	L Kidney	Transplant (JH)			Import	1	1
05/06/2021	AIED201	PADV - Gift of Life Donor Program	Kidney	Declined Prior to Import			Import	0	0
05/06/2021	AIED181	NCCM - Lifeshare of the Carolinas	R Kidney	Transplant (JH)			Import	1	1
05/06/2021	AIED421	HIOP - Organ Donor Center of Hawaii	R Kidney	Transplant (JH)			Import	1	1
05/07/2021	AIEE292	PADV - Gift of Life Donor Program	L Kidney	Transplant (UM)			Import	1	1
05/07/2021	AIEE430	MAOB - New England Organ Bank	L Kidney	Transplant (JH)			Import	1	1
05/07/2021	AIEE440	PATF - Center for Organ Recovery and Education	R Kidney	Transplant (UM)			Import	1	1
05/10/2021	AIEJ356	NYFL - Finger Lakes Donor Recovery Program	L Kidney	Transplant (JH)			Import	1	1
05/13/2021	AIEK110	NYWN - Upstate New York Transplant Services Inc	B Kidney	Declined	Anatomical abnormalities	Medical Waste	Import	2	0
05/13/2021	AIEL233	DCTC - Washington Regional Transplant Consortium	R Kidney	Transplant (UM)			Import	1	1
05/16/2021	AIEN129	PADV - Gift of Life Donor Program	Kidney	Declined Prior to Import	Biopsy findings		Import	0	0

2021 Local Organ Disposition Report

Run Date: 8/4/2021 12:57:25 PM

UNOS ID	Hospital	R Ki	L Ki	D/E Ki	# Recovered with Intent to Transplant	# Kidney transplanted	# of kidney MW	XC
AIDD146	HCGH	MW	MDJH	N/A	2	1	1	04/07/2021 13:22
AIDF142	UMMC	NYMS	NR	N/A	1	1	0	04/08/2021 12:08
AIDF053	UMMC	MW	MDJH	N/A	2	1	1	04/09/2021 12:00
AIDF333	UMMC	WVCA	MDUM	N/A	2	2	0	04/10/2021 10:28
AIDP045	FSHC	MW	MW	N/A	2	0	2	04/18/2021 11:37
AIDQ180	UCMC	NYNS	MDJH	N/A	2	2	0	04/19/2021 23:46
AIDS294	FSHC	MDUM	NYVA	N/A	2	2	0	04/21/2021 11:47
AIDV254	JHBMC	MW	MW	N/A	2	0	2	04/25/2021 11:48
AIDV338	SHB	MDUM	NYCP	N/A	2	2	0	04/25/2021 17:46
AID2335	UMMC	MDJH	NJSB	N/A	2	2	0	05/01/2021 13:00
AID3084	PRMC	MW	MW	N/A	2	0	2	05/01/2021 17:16
AID2142	FSHC	NR	NR	N/A	0	0	0	05/01/2021 19:54
AIEB459	UMMC	DCGU	NYMA	N/A	2	2	0	05/05/2021 11:05
AIEF406	HCGH	NYCP	CTYN	N/A	2	2	0	05/08/2021 17:56
AIEM213	SHB	MW	MW	N/A	2	0	2	05/15/2021 09:51
AIEL282	SHB	NYUC	NYNY	N/A	2	2	0	05/15/2021 16:10
AIEU425	PRMC	MW	MW	N/A	2	0	2	05/24/2021 01:26
AIEW009	SAH	NYSB	MDUM	N/A	2	2	0	05/25/2021 20:26
AIEZ008	SHB	MW	MDJH	N/A	2	1	1	05/28/2021 13:21
AIE2141	UCMC	NCDU	NYCP	N/A	2	2	0	05/30/2021 14:45
AIE2035	SHB	MDJH	GAPH	N/A	2	2	0	05/31/2021 10:54
AIE2034	PRMC	NYNY	NJSB	N/A	2	2	0	05/31/2021 17:26
AIE3144	CHC	NJSB	UTMC	N/A	2	2	0	06/01/2021 17:23
AIE2468	FSHC	NYCC	MDJH	N/A	2	2	0	06/01/2021 18:59
AIFB465	CHC	MW	MW	N/A	2	0	2	06/05/2021 20:30
AIFG147	MRRMC	NCDU	OHCC	N/A	2	2	0	06/10/2021 10:37
AIFH498	FSHC	NYEC	VAMC	N/A	2	2	0	06/10/2021 12:03
AIFI480	BWMC	MW	MW	N/A	2	0	2	06/11/2021 11:21
AIFJ171	UMMC	MW	NYEC	N/A	2	1	1	06/13/2021 13:51
AIFL491	UMMC	CAGH	MW	N/A	2	1	1	06/14/2021 10:40
AIFL454	SAH	NR	NR	N/A	0	0	0	06/14/2021 21:09
AIFM273	NWHC	MW	MW	N/A	2	0	2	06/15/2021 14:32
AIFQ490	MRRMC	MW	MW	N/A	2	0	2	06/18/2021 13:38
AIFS332	UPMCWV	AZGS	NYUM	N/A	2	2	0	06/23/2021 17:22
AIFY197	UMMC	MW	NYWC	N/A	2	1	1	06/27/2021 09:07
AIFX292	FHH	NYEC	MDJH	N/A	2	2	0	06/27/2021 10:53
AIFY183	UMMC	VANG	INSV	N/A	2	2	0	06/28/2021 11:12
AIFY274	SAH	VAMC	PAUP	N/A	2	2	0	06/29/2021 12:38
AIFZ118	FSHC	MW	MDJH	N/A	2	1	1	06/30/2021 12:37
AIF1166	FSHC	NYDS	MW	N/A	2	1	1	06/30/2021 20:52

2021 Jan - June Organ Imports Report

XC Date	UNOS ID	Donor OPO	Organ	Disposition	Reason not Txpd	Disp if not Txpd	Import Flyout	# of Kidney Imported Imp	# of Kidney transplanted Imp
05/16/2021	AIE0365	TXSB - Southwest Transplant Alliance	Kidney/Panc	Declined Prior to Import	Poor organ function		Import	0	0
05/17/2021	AIEP085	VATB - LifeNet Health	L Kidney	Transplant (UM)			Import	1	1
05/17/2021	AIEP085	VATB - LifeNet Health	Liver/Kidney	Declined in OR	Biopsy findings		Flyout	1	0
05/17/2021	AIEO246	PATF - Center for Organ Recovery and Education	R Kidney	Transplant (JH)			Import	1	1
05/18/2021	AIEP199	NJTO - New Jersey Organ and Tissue Sharing Network OPO	L Kidney/Panc	Transplant (UM)			Import	1	1
05/18/2021	AIEO046	VATB - LifeNet Health	R Kidney	Transplant (JH)			Import	1	1
05/18/2021	AIEO311	PADV - Gift of Life Donor Program	R Kidney	Transplant (UM)			Import	1	1
05/20/2021	AIEO290	MIOP - Gift of Life Michigan	Heart/L Kidney	Transplant (JH)			Flyout	1	1
05/20/2021	AIES008	PADV - Gift of Life Donor Program	L Kidney	Transplant (UM)			Import	1	1
05/20/2021	AIES020	VATB - LifeNet Health	L Kidney	Transplant (JH)			Import	1	1
05/20/2021	AIEO294	PADV - Gift of Life Donor Program	R Kidney	Transplant (JH)			Import	1	1
05/20/2021	AIER052	NJTO - New Jersey Organ and Tissue Sharing Network OPO	R Kidney	Transplant (JH)			Import	1	1
05/20/2021	AIES020	VATB - LifeNet Health	R Kidney	Transplant (JH)			Import	1	1
05/21/2021	AIES286	PADV - Gift of Life Donor Program	L Kidney	Transplant (JH)			Import	1	1
05/21/2021	AIEQ353	PADV - Gift of Life Donor Program	R Kidney	Transplant (JH)			Import	1	1
05/22/2021	AIEU329	PADV - Gift of Life Donor Program	Kidney	Declined Prior to Import	Organ trauma		Import	0	0
05/23/2021	AJET014	MAOB - New England Organ Bank	L Kidney	Transplant (JH)			Import	1	1
05/24/2021	AIEW441	PADV - Gift of Life Donor Program	Kidney	Declined Prior to Import			Import	0	0
05/25/2021	AIEY299	PADV - Gift of Life Donor Program	R Kidney	Transplant (JH)			Import	1	1
05/26/2021	AIEY482	MAOB - New England Organ Bank	L Kidney	Transplant (JH)			Import	1	1
05/27/2021	AIEW042	PADV - Gift of Life Donor Program	L Kidney/Panc	Transplant (UM)			Import	1	1
05/28/2021	AIE1143	PATF - Center for Organ Recovery and Education	L Kidney/Panc	Transplant (JH)			Import	1	1
05/30/2021	AIE3055	PATF - Center for Organ Recovery and Education	L Kidney	Transplant (UM)			Import	1	1
05/30/2021	AIE3096	PADV - Gift of Life Donor Program	R Kidney	Transplant (UM)			Import	1	1
05/31/2021	AIE3328	PATF - Center for Organ Recovery and Education	Kidney/Panc	Declined Prior to Import	quality		Import	0	0
05/31/2021	AIE2070	PATF - Center for Organ Recovery and Education	R Kidney	Transplant (JH)			Import	1	1
05/31/2021	AIE3328	PATF - Center for Organ Recovery and Education	R Kidney	Transplant (JH)			Import	1	1
06/01/2021	AIE3142	GALL - LifeLink of Georgia	L Kidney	Transplant (JH)			Import	1	1
06/04/2021	AIFB070	NCNC - Carolina Donor Services	R Kidney	Declined Prior to Import	poor pump numbers		Import	0	0
06/05/2021	AIFC263	VATB - LifeNet Health	R Kidney	Transplant (JH)			Import	1	1
06/08/2021	AIFD395	PATF - Center for Organ Recovery and Education	R Kidney	Transplant (JH)			Import	1	1
06/08/2021	AIFE079	MAOB - New England Organ Bank	R Kidney	Transplant (JH)			Import	1	1
06/10/2021	AIFF300	NYRT - New York Organ Donor Network	L Kidney	Transplant (UM)			Import	1	1
06/10/2021	AIFH267	NCNC - Carolina Donor Services	L Kidney	Transplant (UM)			Import	1	1
06/10/2021	AIFH354	VATB - LifeNet Health	R Kidney	Transplant (UM)			Import	1	1
06/11/2021	AIFK322	PADV - Gift of Life Donor Program	L Kidney	Transplant (JH)			Import	1	1
06/12/2021	AIFK483	PADV - Gift of Life Donor Program	R Kidney	Declined	Organ not as described	Medical Waste	Import	1	0
06/14/2021	AIFJ457	DCTC - Washington Regional Transplant Consortium	Kidney/Panc	Declined Prior to Import	recipient needed KP but listed as panc alone		Import	0	0
06/14/2021	AIFL063	NJTO - New Jersey Organ and Tissue Sharing Network OPO	R Kidney	Transplant (UM)			Import	1	1
06/15/2021	AIFK265	CASD - Lifesharing Community Organ & Tissue Donation	L Kidney	Transplant (JH)			Import	1	1
06/16/2021	AIFM179	PATF - Center for Organ Recovery and Education	R Kidney	Transplant (UM)			Import	1	1
06/17/2021	AIFP443	PADV - Gift of Life Donor Program	L Kidney	Transplant (UM)			Import	1	1
06/18/2021	AIFP384	NCCM - Lifeshare of the Carolinas	L Kidney	Transplant (JH)			Import	1	1
06/18/2021	AIFR401	PADV - Gift of Life Donor Program	L Kidney	Transplant (JH)			Import	1	1
06/18/2021	AIFR401	PADV - Gift of Life Donor Program	R Kidney	Transplant (JH)			Import	1	1
06/20/2021	AIFS372	PADV - Gift of Life Donor Program	Kidney	Declined Prior to Import	Donor Medical history		Import	0	0
06/21/2021	AIFR488	VATB - LifeNet Health	Kidney/Panc	Declined Prior to Import	Poor visual		Import	0	0
06/21/2021	AIFT282	NYFL - Finger Lakes Donor Recovery Program	L Kidney	Transplant (JH)			Import	1	1
06/21/2021	AIFR488	VATB - LifeNet Health	Liver/L Kidney	Transplant (UM)			Flyout	1	1

2021 Local Organ Disposition Report

Run Date: 8/4/2021 12:57:25 PM

UNOS ID	Hospital	R Ki	L Ki	D/E Ki	# Recovered with Intent to Transplant	# Kidney transplanted	# of kidney MW	XC
---------	----------	------	------	--------	---------------------------------------	-----------------------	----------------	----

2021 Jan - June Organ Imports Report

XC Date	UNOS ID	Donor OPO	Organ	Disposition	Reason not Txp	Disp if not Txp	Import Flyout	# of Kidney Imported Imp	# of Kidney transplanted Imp
06/21/2021	AIFR488	VATB - LifeNet Health	R Kidney	Transplant (UM)			Import	1	1
06/22/2021	AIFT405	NCNC - Carolina Donor Services	Kidney/Panc	Declined Prior to Import	bmi quality		Import	0	0
06/22/2021	AIFT491	NJTO - New Jersey Organ and Tissue Sharing Network OPO	L Kidney	Transplant (JH)			Import	1	1
06/22/2021	AIFT405	NCNC - Carolina Donor Services	R Kidney	Transplant (JH)			Import	1	1
06/23/2021	AIFU009	NCNC - Carolina Donor Services	Kidney	Declined Prior to Import	Poor organ function		Import	0	0
06/25/2021	AIFW348	INOP - Indiana Organ Procurement Organization	Kidney/Panc	Declined Prior to Import	OPO would not send blood for pri offer		Import	0	0
06/26/2021	AIFX198	PATF - Center for Organ Recovery and Education	R Kidney	Transplant (UM)			Import	1	1
06/26/2021	AIFY434	MOMA - Mid-America Transplant Services	R Kidney	Transplant (JH)			Import	1	1
06/29/2021	AIF1472	PADV - Gift of Life Donor Program	Kidney	Declined Prior to Import	No waivers.		Import	0	0
06/30/2021	AIF1301	NCNC - Carolina Donor Services	Kidney	Declined Prior to Import	prlonged CIT & extraction time		Import	0	0

2021 Local Organ Disposition Report

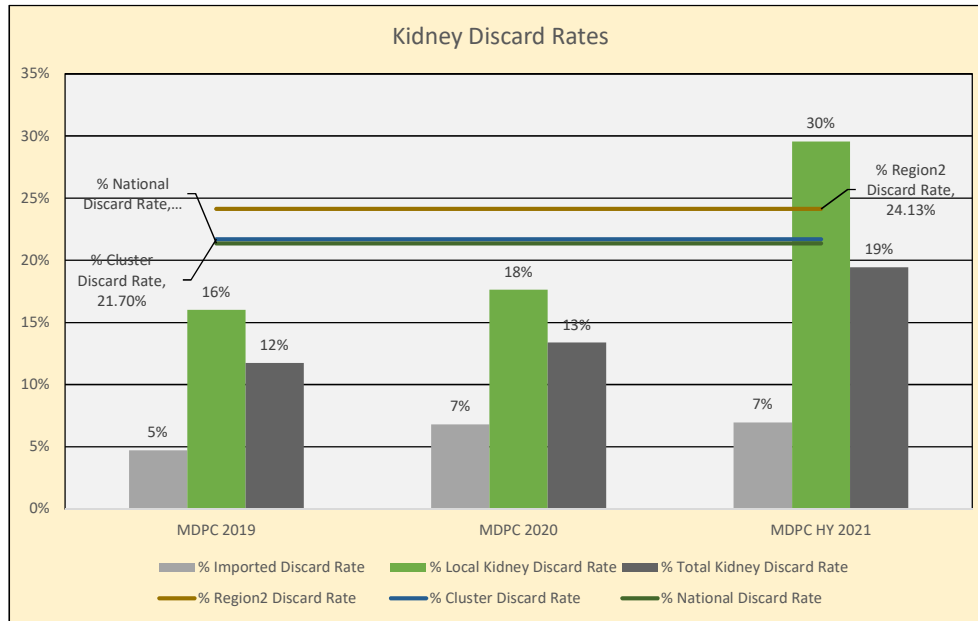
Run Date: 8/4/2021 12:57:25 PM

UNOS ID	Hospital	R Ki	L Ki	D/E Ki	# Recovered with Intent to Transplant	# Kidney transplanted	# of kidney MW	XC
---------	----------	------	------	--------	---------------------------------------	-----------------------	----------------	----

EXHIBIT 3

Notes: Region2, cluster and national data are from UNOS data 5/1/2020-4/30/2021
 HY 2021: 1/1/2021-6/30/2021

Discard Rates:



Year	Imported Kidneys			Local Kidneys			Total Kidneys			% Region2 Discard Rate	% Cluster Discard Rate	% National Discard Rate
	# Kidney Imported	# Kidney Imported Discarded	% Imported Discard Rate	# Kidney Recovered with intent to transplant	# Local Kidney Discarded	% Local Kidney Discard Rate	# Total Kidney Recovered	# Total Kidney Discard	% Total Kidney Discard Rate			
MDPC 2019	190	9	5%	312	50	16%	502	59	12%	24.13%	21.70%	21.37%
MDPC 2020	176	12	7%	272	48	18%	448	60	13%	24.13%	21.70%	21.37%
MDPC HY 2021	129	9	7%	159	47	30%	288	56	19%	24.13%	21.70%	21.37%
Total:	495	30	6.06%	743	145	19.52%	1238	175	14.14%			