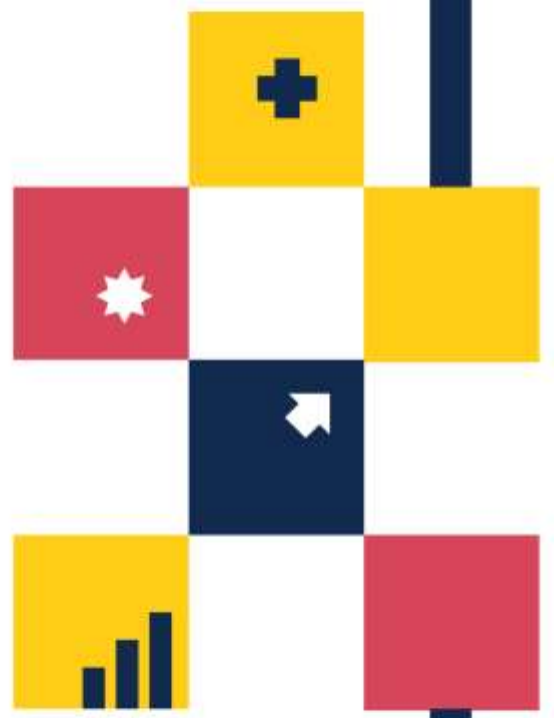


FY2021 Maryland Health Care Commission Hospice Utilization Report



Randolph S. Sergent, Esq.
CHAIRMAN

Ben Steffen, Executive Director
Maryland Health Care Commission

Arun Bhandari, MD
Chesapeake Oncology Hematology
Associates, PA

Cassandra Boyer, BA
Business Operations Manager
Enterprise Information Systems Directorate
US Army Communications Electronics Command

Marcia Boyle, MS
Founder
Immune Deficiency Foundation

Trupti N. Brahmabhatt, PhD
Senior Policy Researcher
Rand Corporation

Ken Buczynski, MD
Founder and Owner
Wellspring Family Medicine

Tinisha Cheatham, MD
Physician in Chief of the Mid-Atlantic
Permanente Medical Group

Mark T. Jensen, Esq.
Partner
Bowie & Jensen, LLC

Jeffrey Metz, MBA, LNHA
President and Administrator
Egle Nursing and Rehab Center

Gerard S. O'Connor, MD
General Surgeon in Private Practice

Michael J. O'Grady, PhD
Principal, Health Policy LLC, and
Senior Fellow, National Opinion Research Ctr
(NORC) at the University of Chicago

Awawu Ojikutu, CRNP
Nurse Practitioner
AIM Behavioral Health Services

Marcus L. Wang, Esq.
Co-Founder, President and General Manager
ZytoGen Global Genetics Institute

Karrie M. Wood
Director of Business Development
Community Bank of the Chesapeake

Table of Contents

Annual Maryland Health Care Commission Hospice Survey	1
FY2021 Hospice Utilization Report	1
Hospice Utilization	2
Hospice Location of Services	4
Hospice Non-Death Discharges	7
Diagnoses at Admission	10
Utilization by Race	11
Race Trends Over Time	14
African American Hospice Patients Served by Region Over Time.....	15
Outreach to African Americans to Increase Hospice Use	16



Annual Maryland Health Care Commission Hospice Survey

Each year, the Maryland Health Care Commission (MHCC) administers a survey to all licensed hospices in the state of Maryland. The survey is administered by the Center for Health Care Facilities Planning and Development at MHCC, and the data are analyzed by the Center for Quality Measurement and Reporting. Hospices are required to supply information about the patients they served and all spending.

Data sources include the FY2014 to FY2021 Hospice Surveys, the CMS Hospice Standard Analytic File, and the CMS Master Beneficiary Summary File. Hospice utilization tables are constructed each year by the Center for Quality Measurement and Reporting and posted on the main MHCC website and the [Maryland Quality Reporting](#) consumer website. The FY2021 data are accessible on the Maryland Health Care Commission's [website](#).

FY2021 Hospice Utilization Report

The report includes the following graphs and charts:

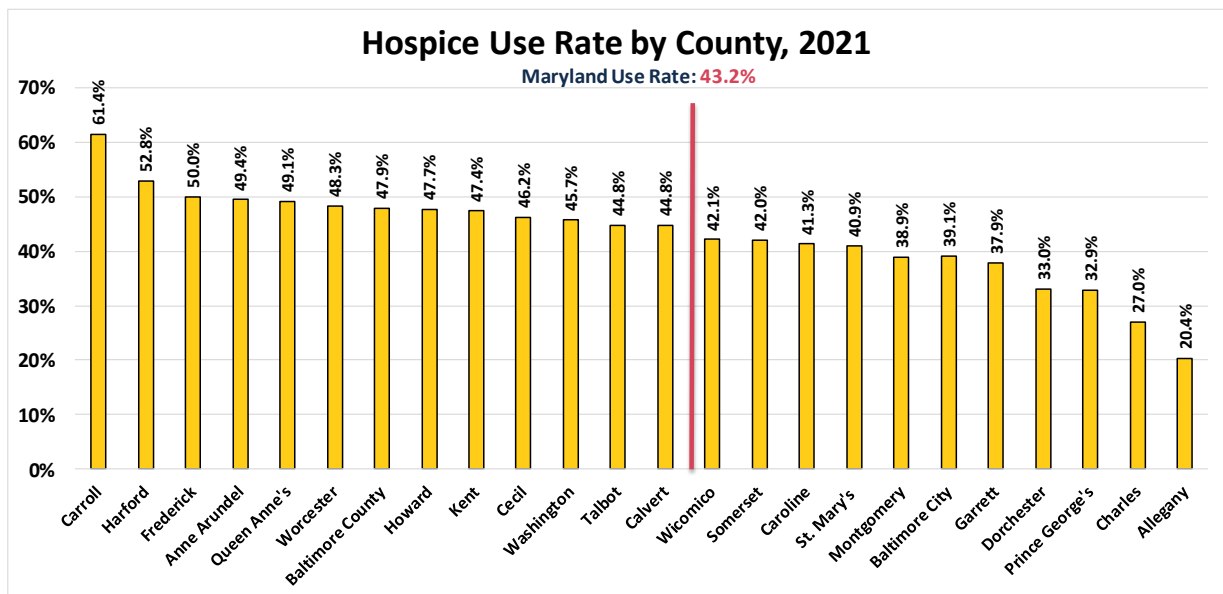
- Graph: Hospice Use Rate by County, 2021
- Graph: Maryland Hospice Use Rates by County and Region, 2021
- Table: Hospice Patients Served in Maryland by Location of Services, FY2021
- Graph: Hospice Patients Served in Maryland by Location of Services, FY 2021
- Table: Hospice Patients: Non-Death Discharges by Maryland Region, FY2021
- Graph: Hospice Patients: Non-Death Discharges by Maryland Region, FY2021
- Graph: Hospice Patients Served in Maryland by Primary Diagnosis, FY2021
- Graph: Hospice Patients Served in Maryland by Race, FY2021
- Table: Hospice Patients Served in Maryland by Region and Race, FY2021
- Graph: Hospice Patients Served by Region and Race, FY2021
- Graph: Maryland Hospice Patients Served by Race, FY2014-FY2021
- Graph: African American Hospice Patients Served by Region, FY2014-FY2021



Hospice Utilization

In the United States, the hospice use rate was 50.6% in 2018, 51.6% in 2019, and decreased slightly in 2020 to 47.8%.¹ In 2021, the rate was 44.9%. In 2020, the Maryland use rate was 41.2%,² but the calculation method is different for 2021.³ The hospice use rate for Maryland in 2021 is 43.2%.

In 2021, the highest use rates were in Carroll (61.4%), Harford (52.8%), Frederick (50%), Anne Arundel (49.4%), and Queen Anne’s (49.1%) Counties. The counties with the lowest use rates were Allegany (20.4%), Charles (27%), Prince George’s (32.9%), Dorchester (33%), and Garrett (37.9%) Counties.



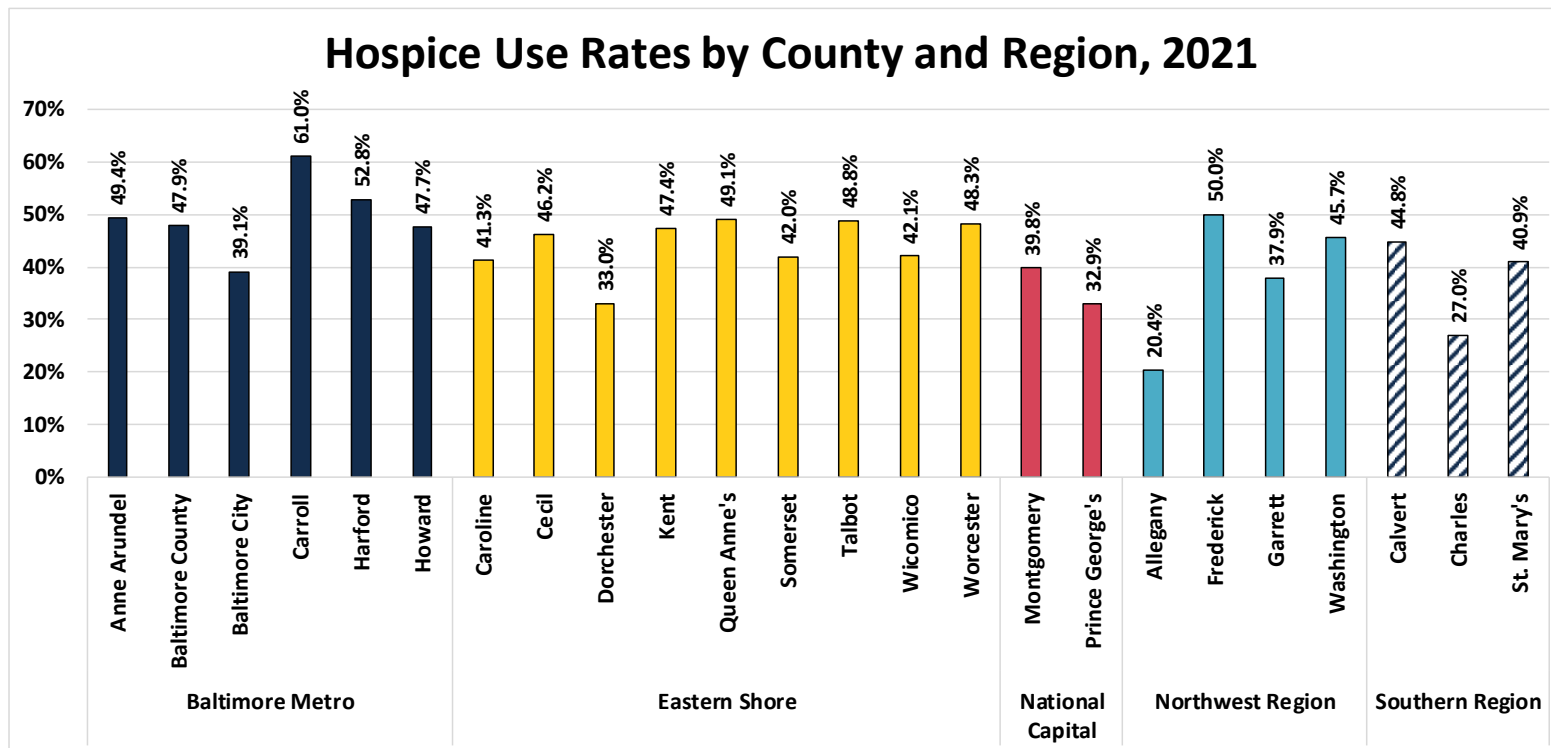
Data source: Centers for Medicare and Medicaid--Numerator: 100% Hospice Standard Analytic Files; Denominator: Master Beneficiary Summary Files

¹ Source: MedPac Report to the Congress: Medicare Payment Policy, March 2022.

² The hospice use rate is calculated by dividing the number of hospice deaths by the number of deaths of individuals aged 35 and older.

³ This hospice use rate is calculated by dividing Medicare hospice deaths by total Medicare deaths.





Data source: Centers for Medicare and Medicaid--Numerator: 100% Hospice Standard Analytic Files; Denominator: Master Beneficiary Summary Files



Hospice Location of Services

The total number of patients in FY2020 was 26,061 patients, not including carryovers.⁴ The largest percentage of hospice patients were served in private homes (51.7%) while 21.9% were served in general or respite care⁵ situations. Additionally, 23.5% were served in skilled nursing or assisted living facilities. Very few, 2.9%, were served in residential hospices.⁶

The results in FY2021 were similar to the results in FY2020. The total number of patients in FY2021 was 23,273, not including carryovers. The largest percentage of hospice patients were served in private homes (56.1%) while 21.1% were served in general or respite care situations. Additionally, 21% were served in skilled nursing or assisted living facilities. Very few, 1.8%, were served in residential hospices.

⁴ The number of patients carried over from 2020 by county.

⁵ General or respite care patients are served in general inpatient units or hospitals.

⁶ Residential hospice patients are served in Hospice Houses which provide a routine/continuous level of care only and exclude nursing homes or assisted living facility settings.



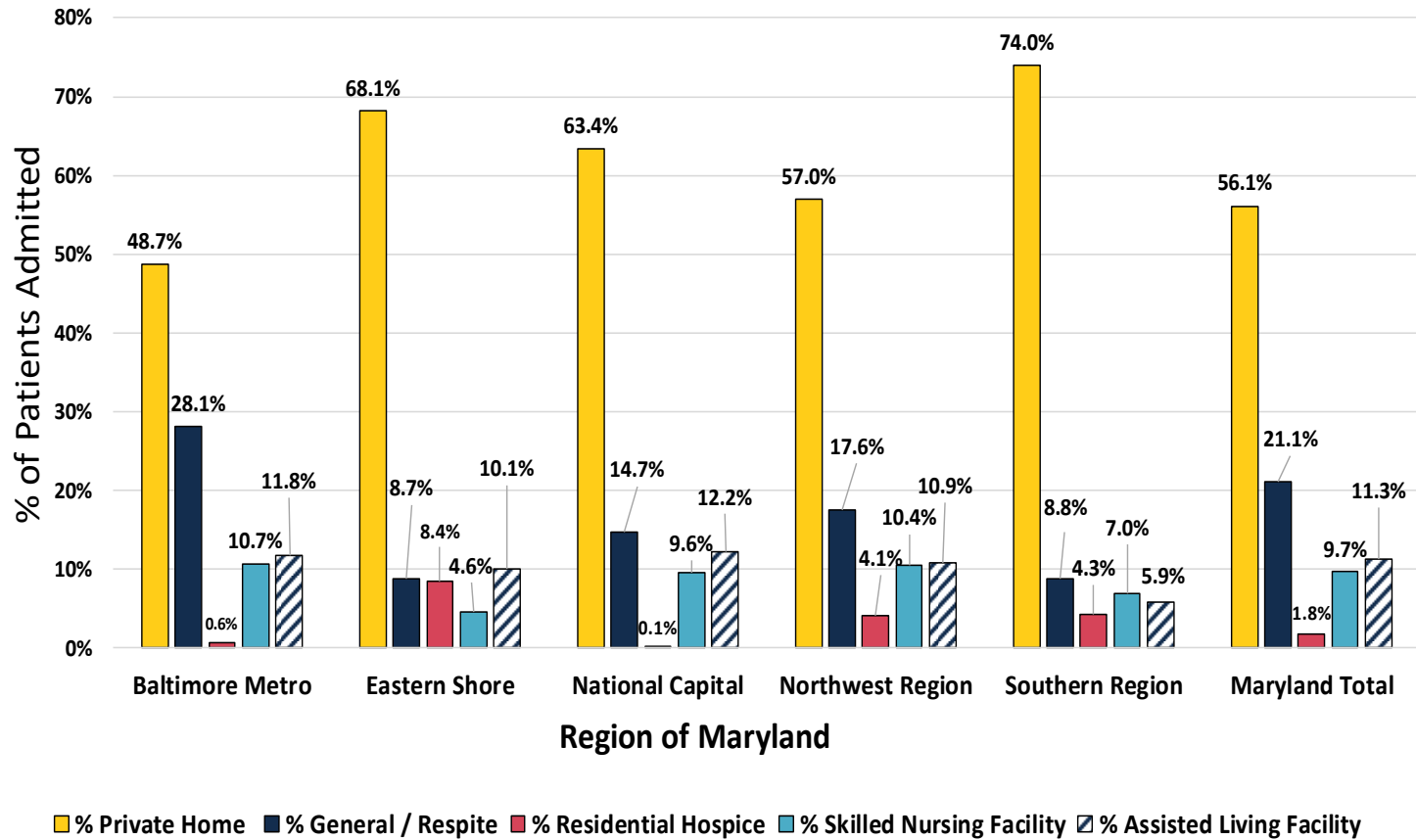
Hospice Patients Served in Maryland by Location of Services, FY2021

Region and Jurisdiction	Total Patients Served	Private Home	% Private Home	General / Respite	% General / Respite	Residential Hospice	% Residential Hospice	Skilled Nursing Facility	% Skilled Nursing Facility	Assisted Living Facility	% Assisted Living Facility
Baltimore Metro	12,061	5,877	48.7%	3,390	28.1%	75	0.6%	1,294	10.7%	1,425	11.8%
Anne Arundel	2,492	1,249	50.1%	677	27.2%	6	0.2%	185	7.4%	375	15.0%
Baltimore County	4,332	2,077	47.9%	1,179	27.2%	29	0.7%	615	14.2%	432	10.0%
Baltimore City	2,266	1,099	48.5%	806	35.6%	30	1.3%	228	10.1%	103	4.5%
Carroll	1,067	431	40.4%	337	31.6%	-	0.0%	139	13.0%	160	15.0%
Harford	990	542	54.7%	254	25.7%	8	0.8%	61	6.2%	125	12.6%
Howard	914	479	52.4%	137	15.0%	2	0.2%	66	7.2%	230	25.2%
Eastern Shore	2,247	1,531	68.1%	196	8.7%	189	8.4%	104	4.6%	227	10.1%
Caroline	150	100	66.7%	3	2.0%	8	5.3%	9	6.0%	30	20.0%
Cecil	282	213	75.5%	12	4.3%	-	0.0%	29	10.3%	28	9.9%
Dorchester	140	133	95.0%	5	3.6%	-	0.0%	-	0.0%	2	1.4%
Kent	111	64	57.7%	5	4.5%	18	16.2%	8	7.2%	16	14.4%
Queen Anne's	262	133	50.8%	25	9.5%	89	34.0%	2	0.8%	13	5.0%
Somerset	100	76	76.0%	12	12.0%	-	0.0%	10	10.0%	2	2.0%
Talbot	292	167	57.2%	10	3.4%	63	21.6%	10	3.4%	42	14.4%
Wicomico	550	369	67.1%	91	16.5%	3	0.5%	30	5.5%	57	10.4%
Worcester	360	276	76.7%	33	9.2%	8	2.2%	6	1.7%	37	10.3%
National Capital	5,281	3,350	63.4%	775	14.7%	3	0.1%	507	9.6%	646	12.2%
Montgomery	3,173	1,850	58.3%	529	16.7%	1	0.0%	324	10.2%	469	14.8%
Prince George's	2,108	1,500	71.2%	246	11.7%	2	0.1%	183	8.7%	177	8.4%
Northwest Region	2,482	1,414	57.0%	436	17.6%	103	4.1%	259	10.4%	270	10.9%
Allegany	212	198	93.4%	2	0.9%	-	0.0%	3	1.4%	9	4.2%
Frederick	1,195	652	54.6%	184	15.4%	103	8.6%	115	9.6%	141	11.8%
Garrett	136	106	77.9%	-	0.0%	-	0.0%	26	19.1%	4	2.9%
Washington	939	458	48.8%	250	26.6%	-	0.0%	115	12.2%	116	12.4%
Southern Region	1,202	889	74.0%	106	8.8%	52	4.3%	84	7.0%	71	5.9%
Calvert	303	257	84.8%	3	1.0%	-	0.0%	31	10.2%	12	4.0%
Charles	433	325	75.1%	53	12.2%	1	0.2%	2	0.5%	52	12.0%
St. Mary's	466	307	65.9%	50	10.7%	51	10.9%	51	10.9%	7	1.5%
Maryland Total	23,273	13,061	56.1%	4,903	21.1%	422	1.8%	2,248	9.7%	2,639	11.3%

Datasource: MHCC Hospice Survey 2021. Data collection period FY2021. Patient Volume by County.



Hospice Patients Served in Maryland by Location of Services, FY2021



Datasource: MHCC Hospice Survey 2021. Data collection period FY2021. Patient Volume by County.



Hospice Non-Death Discharges

In FY2020 3,261 patients were classified as non-death discharges. The most common reason for discharge was “discharged by hospice”⁷ at 47.5% followed by “withdrew from hospice”⁸ at 32.3%. Also, patients were discharged for “other” reasons (10.6%), and 9.6% transferred to another hospice.⁹

In FY2021, 3,130 patients were classified as non-death discharges. More patients were “discharged by hospice” (55.3%) in FY2021 compared to FY2020, and fewer “withdrew from hospice” (29.4%), were “transferred to another hospice” (7.3%) or were discharged for “other” reasons (28.1%) compared to FY2020.

⁷ Discharged by Hospice includes patients not recertified for hospice because no longer terminally ill; patients who moved out of service area but did not transfer to another hospice; and patients discharged for cause.

⁸ Withdrew includes patients who revoked the Medicare hospice benefit, those who desired treatment inconsistent with the hospice plan of care, and patients who refused hospice.

⁹ Transferred to another hospice includes patients who transferred to another hospice without interruption of their Medicare hospice benefit.



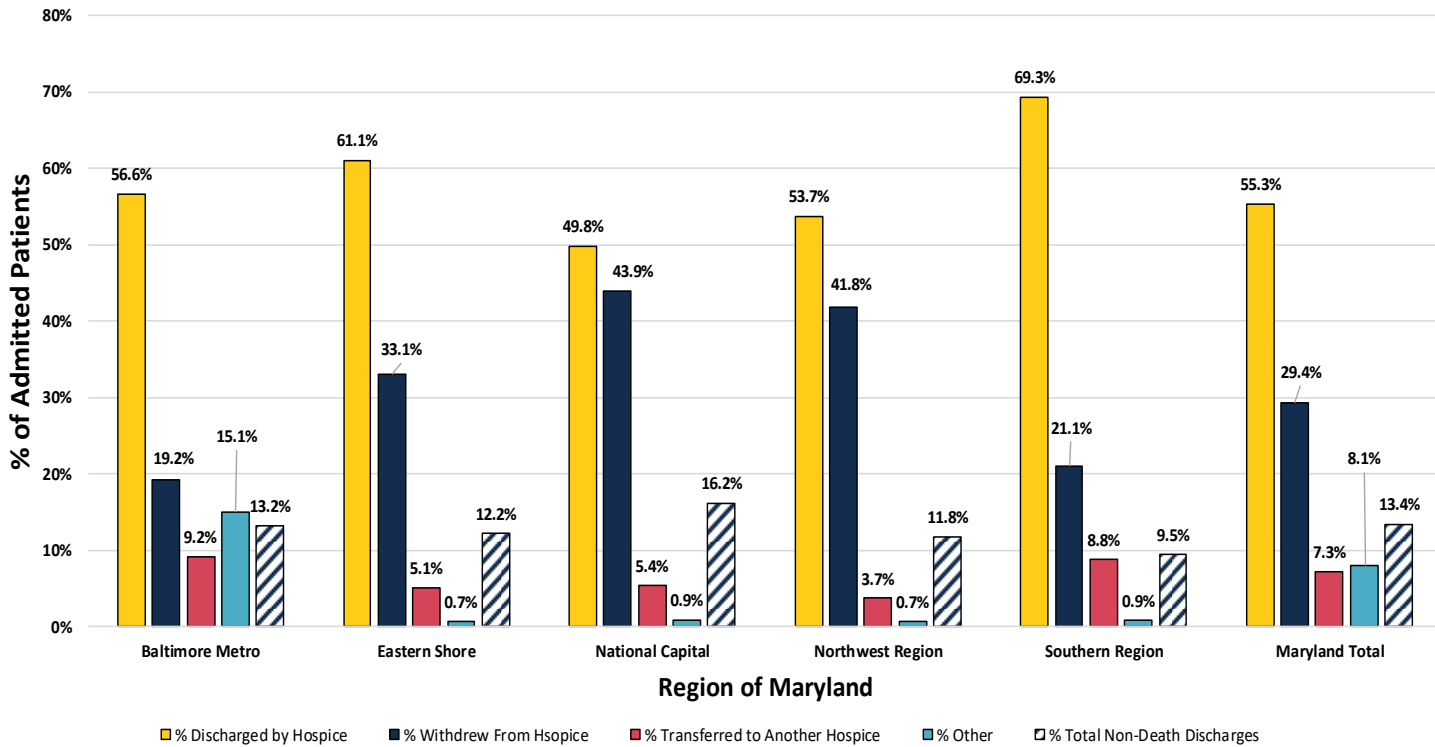
Hospice Patients: Non-Death Discharges by Maryland Region, FY2021

Region and Jurisdiction	Total Patients Served	Discharged by Hospice	% Discharged by Hospice	Withdrawn From Hospice	% Withdrawn From Hospice	Transferred to Another Hospice	% Transferred to Another Hospice	Other	% Other	Total Non-Death Discharges	% Total Non-Death Discharges
Baltimore Metro	12,061	900	56.6%	305	19.2%	146	9.2%	240	15.1%	1,590	13.2%
Anne Arundel	2,492	195	66.1%	81	27.5%	12	4.1%	8	2.7%	295	11.8%
Baltimore County	4,332	329	56.5%	99	17.0%	71	12.2%	83	14.3%	582	13.4%
Baltimore City	2,266	148	44.4%	68	20.4%	27	8.1%	90	27.0%	333	14.7%
Carroll	1,067	36	52.2%	18	26.1%	7	10.1%	8	11.6%	69	6.5%
Harford	990	115	73.7%	11	7.1%	18	11.5%	12	7.7%	156	15.8%
Howard	914	77	49.7%	28	18.1%	11	7.1%	39	25.2%	155	17.0%
Eastern Shore	2,247	168	61.1%	91	33.1%	14	5.1%	2	0.7%	275	12.2%
Caroline	150	8	53.3%	6	40.0%	1	6.7%	-	0.0%	15	10.0%
Cecil	282	75	93.8%	2	2.5%	2	2.5%	1	1.3%	80	28.4%
Dorchester	140	20	80.0%	5	20.0%	-	0.0%	-	0.0%	25	17.9%
Kent	111	9	52.9%	7	41.2%	1	5.9%	-	0.0%	17	15.3%
Queen Anne's	262	12	50.0%	9	37.5%	3	12.5%	-	0.0%	24	9.2%
Somerset	100	4	28.6%	9	64.3%	1	7.1%	-	0.0%	14	14.0%
Talbot	292	2	15.4%	9	69.2%	1	7.7%	1	7.7%	13	4.5%
Wicomico	550	27	49.1%	26	47.3%	2	3.6%	-	0.0%	55	10.0%
Worcester	360	11	34.4%	18	56.3%	3	9.4%	-	0.0%	32	8.9%
National Capital	5,281	427	49.8%	376	43.9%	46	5.4%	8	0.9%	857	16.2%
Montgomery	3,173	226	53.9%	158	37.7%	31	7.4%	4	1.0%	419	13.2%
Prince George's	2,108	201	45.9%	218	49.8%	15	3.4%	4	0.9%	438	20.8%
Northwest Region	2,482	158	53.7%	123	41.8%	11	3.7%	2	0.7%	294	11.8%
Allegany	212	33	84.6%	4	10.3%	2	5.1%	-	0.0%	39	18.4%
Frederick	1,195	46	44.2%	53	51.0%	3	2.9%	2	1.9%	104	8.7%
Garrett	136	10	37.0%	16	59.3%	1	3.7%	-	0.0%	27	19.9%
Washington	939	69	55.6%	50	40.3%	5	4.0%	-	0.0%	124	13.2%
Southern Region	1,202	79	69.3%	24	21.1%	10	8.8%	1	0.9%	114	9.5%
Calvert	303	14	50.0%	4	14.3%	9	32.1%	1	3.6%	28	9.2%
Charles	433	42	82.4%	9	17.6%	-	0.0%	-	0.0%	51	11.8%
St. Mary's	466	23	65.7%	11	31.4%	1	2.9%	-	0.0%	35	7.5%
Maryland Total	23,273	1,732	55.3%	919	29.4%	227	7.3%	253	8.1%	3,130	13.4%

Datasource: MHCC Hospice Survey 2021. Data collection period FY2021. Patient Volume by County.



Hospice Patients: Non-Death Discharges by Maryland Region, FY2021

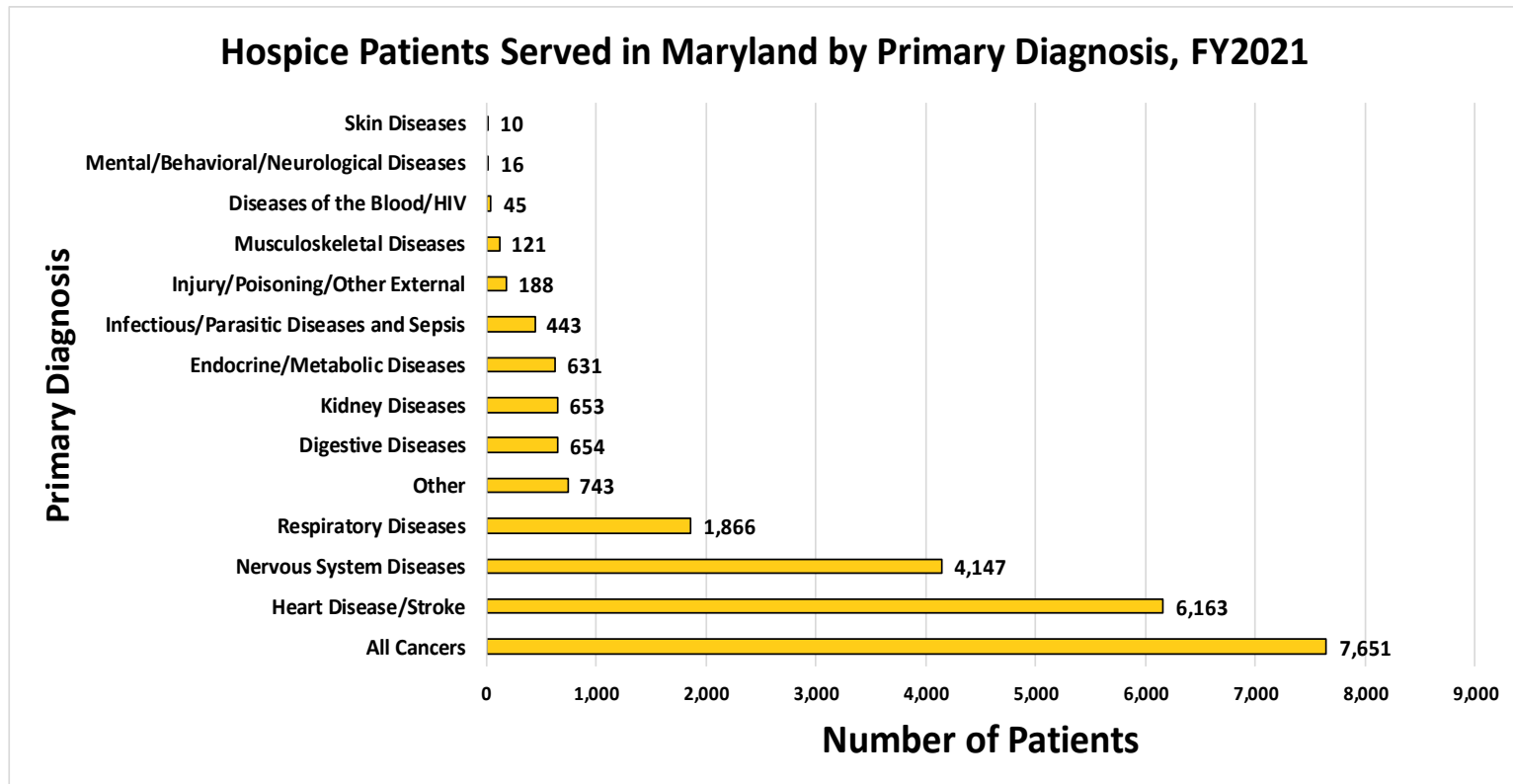


Datasource: MHCC Hospice Survey 2021. Data collection period FY2021. Patient Volume by County.



Diagnoses at Admission

For both FY2020 and FY2021, the most common diagnosis was cancer, followed by heart disease or stroke, and nervous system diseases. Likewise, the two least common diagnoses were skin diseases and mental/behavioral/neurological diseases.



Note: These data include patients served outside of Maryland. These data include only patients admitted that year, no carryovers. Numbers represent illness diagnosed at admission.

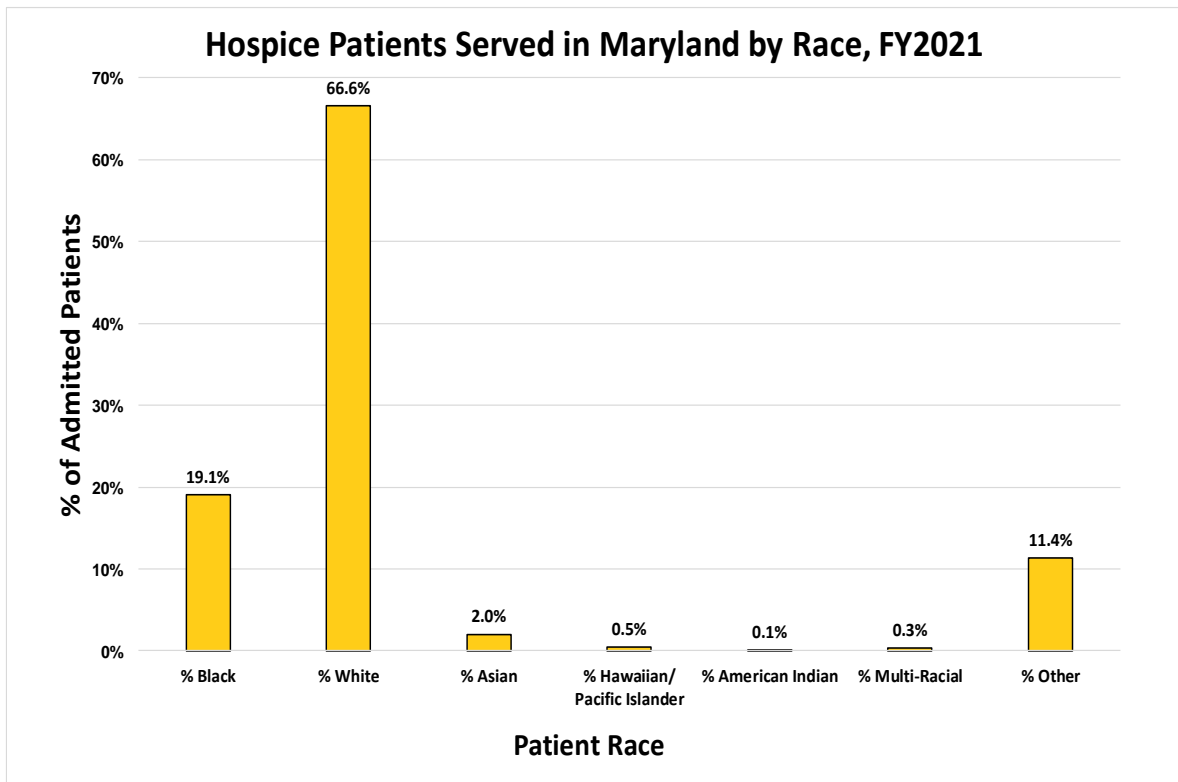
Datasource: MHCC Hospice Survey 2021. Data collection period FY2021. Patients by Primary Diagnosis.



Utilization by Race

In FY2020, most patients served were white (68.5%), 20.8% were African American, 2.4% were Asian, and 8.0% were classified as “multi-racial” or “other.” Most of the percentages in FY2021 were comparable to FY2020, with most patients served being white (66.6%), while 19.1% were African American, and 2% were Asian. Patients who were identified as “multi-racial” or “other” increased to 11.7%. African American patients continue to be underrepresented on the Eastern Shore (12.9%) and Northwest (3.8%) regions compared to 11% and 4.7% in FY2020, respectively.

For comparison purposes, the US Census reports the racial composition of Maryland as 58% White, 31% Black, 7% Asian, 0% Hawaiian/Pacific Islander, 0% American Indian, 3% Multi-Racial, and the US Census does not report an “other” category.



Data source: MHCC Hospice Survey 2021. Data Collection period FY2021. Patient Demographics Race.



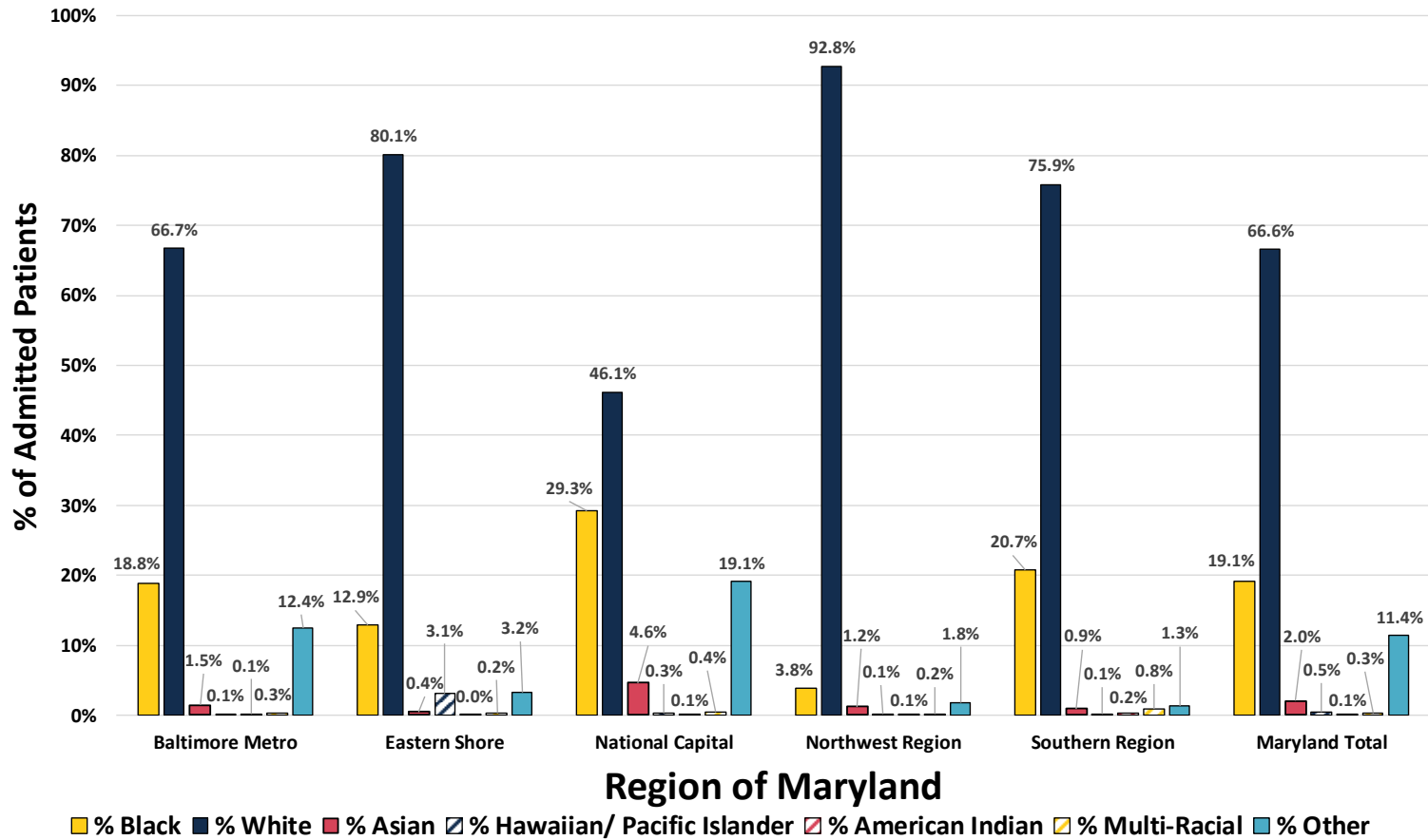
Hospice Patients Served in Maryland by Region and Race, FY2021

Region and County	Total Patients Served	%													
		Black	Black	White	White	Asian	Asian	American Indian	American Indian	Hawaiian /Pacific Islander	Hawaiian /Pacific Islander	Multi-Racial	Multi-Racial	Other	Other
Baltimore Metro	12,061	2,266	18.8%	8,045	66.7%	178	1.5%	18	0.1%	17	0.1%	36	0.3%	1,501	12.4%
Anne Arundel	2,492	326	13.1%	1,965	78.9%	37	1.5%	2	0.1%	6	0.2%	13	0.5%	143	5.7%
Baltimore County	4,332	739	17.1%	2,860	66.0%	57	1.3%	8	0.2%	3	0.1%	9	0.2%	656	15.1%
Baltimore City	2,266	991	43.7%	749	33.1%	13	0.6%	3	0.1%	1	0.0%	3	0.1%	506	22.3%
Carroll	1,067	14	1.3%	990	92.8%	6	0.6%	2	0.2%	3	0.3%	6	0.6%	46	4.3%
Harford	990	66	6.7%	852	86.1%	11	1.1%	1	0.1%	2	0.2%	4	0.4%	54	5.5%
Howard	914	130	14.2%	629	68.8%	54	5.9%	2	0.2%	2	0.2%	1	0.1%	96	10.5%
Eastern Shore	2,247	289	12.9%	1,800	80.1%	10	0.4%	1	0.0%	70	3.1%	5	0.2%	72	3.2%
Caroline	150	15	10.0%	130	86.7%	1	0.7%	-	0.0%	-	0.0%	-	0.0%	4	2.7%
Cecil	282	13	4.6%	214	75.9%	-	0.0%	-	0.0%	-	0.0%	5	1.8%	50	17.7%
Dorchester	140	26	18.6%	112	80.0%	-	0.0%	-	0.0%	-	0.0%	-	0.0%	2	1.4%
Kent	111	12	10.8%	97	87.4%	-	0.0%	-	0.0%	-	0.0%	-	0.0%	2	1.8%
Queen Anne's	262	24	9.2%	236	90.1%	1	0.4%	1	0.4%	-	0.0%	-	0.0%	-	0.0%
Somerset	100	27	27.0%	70	70.0%	1	1.0%	-	0.0%	-	0.0%	-	0.0%	2	2.0%
Talbot	292	27	9.2%	263	90.1%	-	0.0%	-	0.0%	-	0.0%	-	0.0%	2	0.7%
Wicomico	550	110	20.0%	428	77.8%	6	1.1%	-	0.0%	-	0.0%	-	0.0%	6	1.1%
Worcester	360	35	9.7%	320	88.9%	1	0.3%	-	0.0%	-	0.0%	-	0.0%	4	1.1%
National Capital	5,281	1,545	29.3%	2,436	46.1%	245	4.6%	6	0.1%	17	0.3%	23	0.4%	1,009	19.1%
Montgomery	3,173	418	13.2%	1,947	61.4%	206	6.5%	3	0.1%	12	0.4%	10	0.3%	577	18.2%
Prince George's	2,108	1,127	53.5%	489	23.2%	39	1.9%	3	0.1%	5	0.2%	13	0.6%	432	20.5%
Northwest Region	2,482	95	3.8%	2,303	92.8%	31	1.2%	2	0.1%	2	0.1%	4	0.2%	45	1.8%
Allegany	212	1	0.5%	210	99.1%	-	0.0%	-	0.0%	-	0.0%	-	0.0%	1	0.5%
Frederick	1,195	59	4.9%	1,066	89.2%	27	2.3%	2	0.2%	1	0.1%	4	0.3%	36	3.0%
Garrett	136	-	0.0%	136	100.0%	-	0.0%	-	0.0%	-	0.0%	-	0.0%	-	0.0%
Washington	939	35	3.7%	891	94.9%	4	0.4%	-	0.0%	1	0.1%	-	0.0%	8	0.9%
Southern Region	1,202	249	20.7%	912	75.9%	11	0.9%	3	0.2%	1	0.1%	10	0.8%	16	1.3%
Calvert	303	37	12.2%	265	87.5%	1	0.3%	-	0.0%	-	0.0%	-	0.0%	-	0.0%
Charles	433	167	38.6%	243	56.1%	3	0.7%	2	0.5%	0	0.0%	7	1.6%	11	2.5%
St. Mary's	466	45	9.7%	404	86.7%	7	1.5%	1	0.2%	1	0.2%	3	0.6%	5	1.1%
Maryland Total	23,273	4,444	19.1%	15,496	66.6%	475	2.0%	30	0.1%	107	0.5%	78	0.3%	2,643	11.4%

Data source: MHCC Hospice Survey 2021. Data Collection period FY2021. Patient Demographics Race.



Hospice Patients Served by Region and Race, FY2021

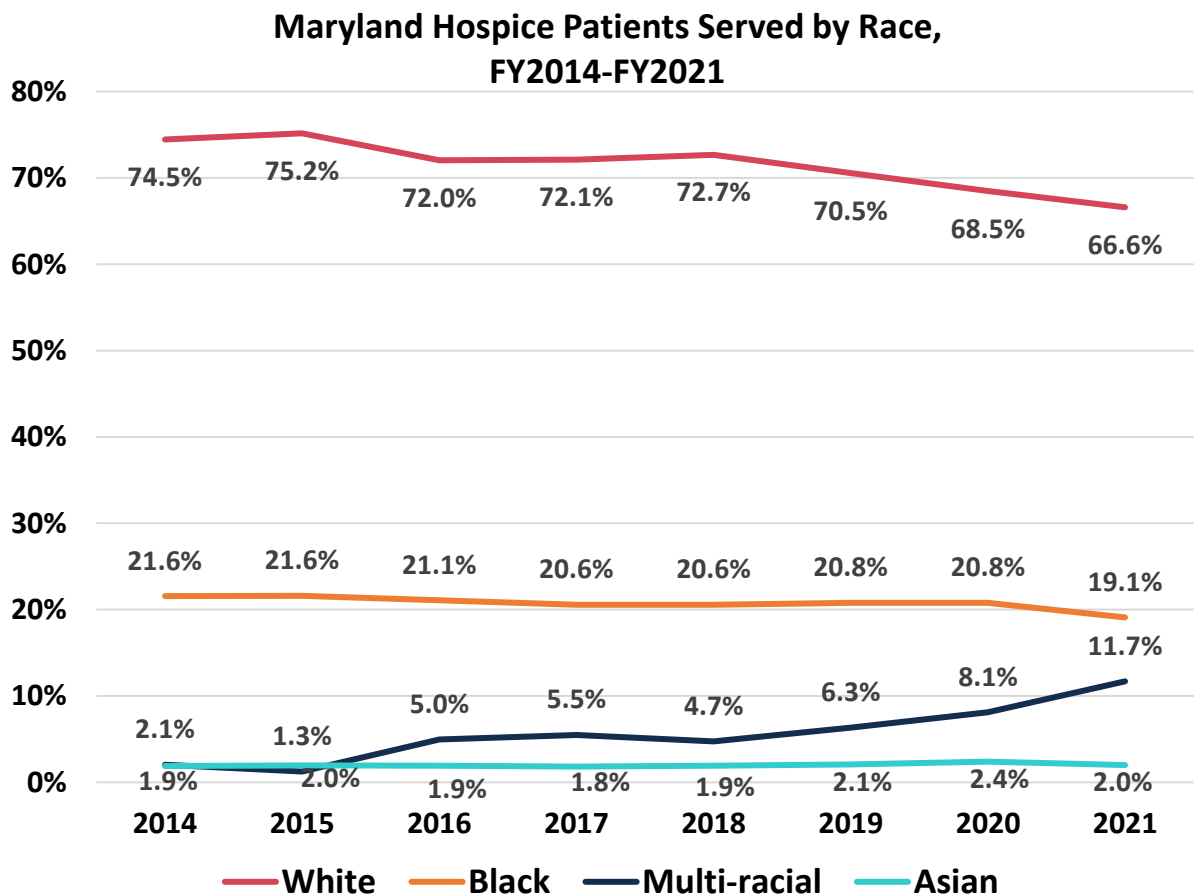


Data source: MHCC Hospice Survey 2021. Data Collection period FY2021. Patient Demographics Race.



Race Trends Over Time

For the state of Maryland, African American hospice use remained stable from FY2014 to FY2020, ranging from 20.6% in FY2017 and FY2018 to a high of 21.6% in FY2014 and FY2015. FY2021 shows a noticeable decrease in the use rates. Rates of use have steadily declined for white Marylanders with rates decreasing from 74.5% in FY2014 to 66.6% in FY2021. Also, the rates for those classified as “multi-racial” or “other” have steadily increased from 2.1% in FY2014 to 11.7% in FY2021. Use rates for Asians have remained steady from FY2014 to FY2021.

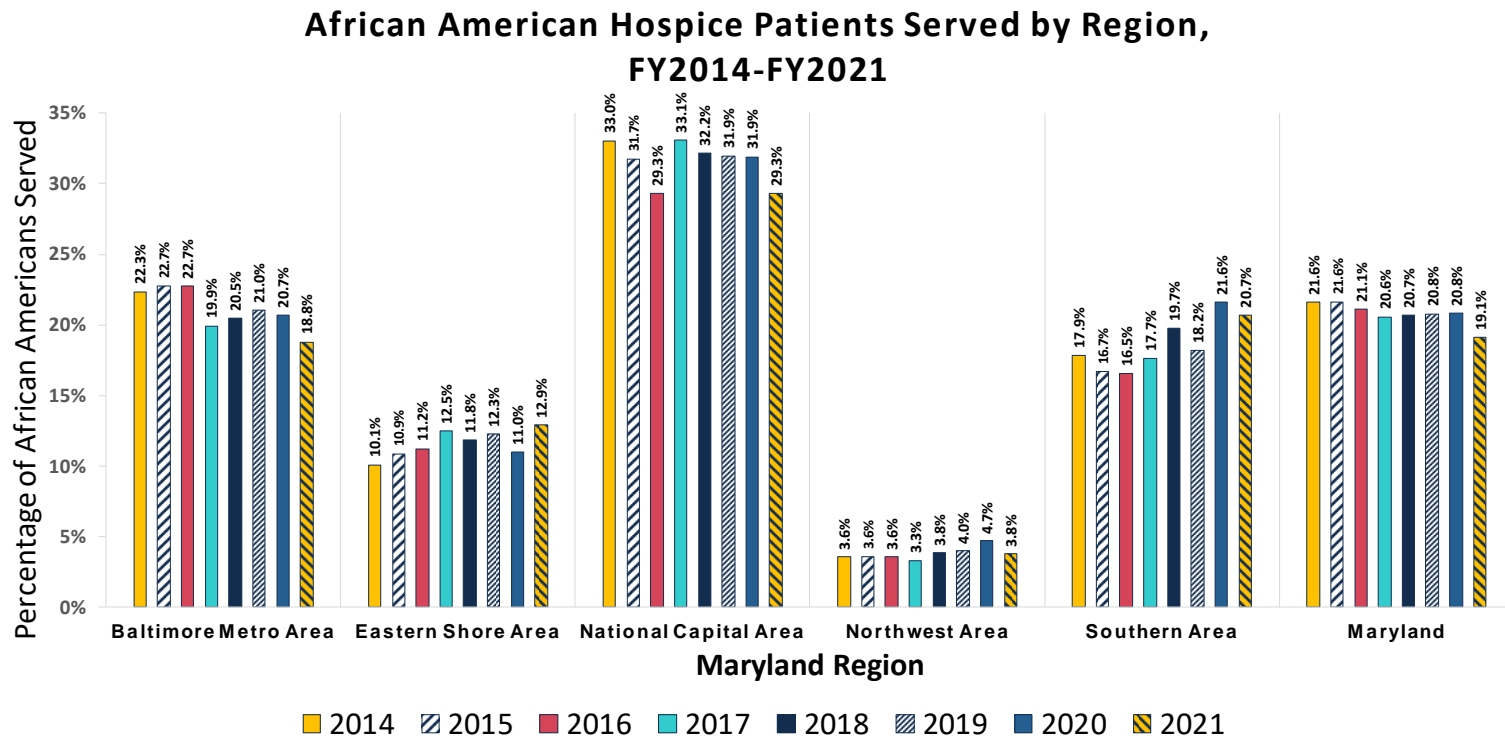


Data source: MHCC Hospice Survey 2014-2021. Data collection period FY2014-FY2021. Patient Volume by County.



African American Hospice Patients Served by Region Over Time

Rates of hospice use have remained steady for African Americans in Maryland but have fluctuated slightly over the years FY2014 to FY2021 when rates are examined by region. The National Capital Region consistently reports the highest hospice use rates by African Americans.



Datasource: MHCC Hospice Survey 2014-2021. Data collection period FY2014-FY2021. Patient Volume by County.



Outreach to African Americans to Increase Hospice Use

Outreach to African Americans has been a central goal for the Maryland Health Care Commission. From 2013-2015, the Commission conducted education and outreach in order to increase the use of hospice by minority populations. Additionally, in 2020-2022, the Center for Quality Measurement and Reporting developed multiple hospice brochures and infographics to increase minorities' awareness of hospice benefits. Staff were able to share the hospice brochure with county libraries and hospital discharge planners. Staff also shared the infographic on social media. Staff attended the Baltimore County Department of Aging Power of Age Expo in October 2022 to distribute information.



4160 Patterson Avenue
Baltimore, MD 21215

mhcc.maryland.gov