



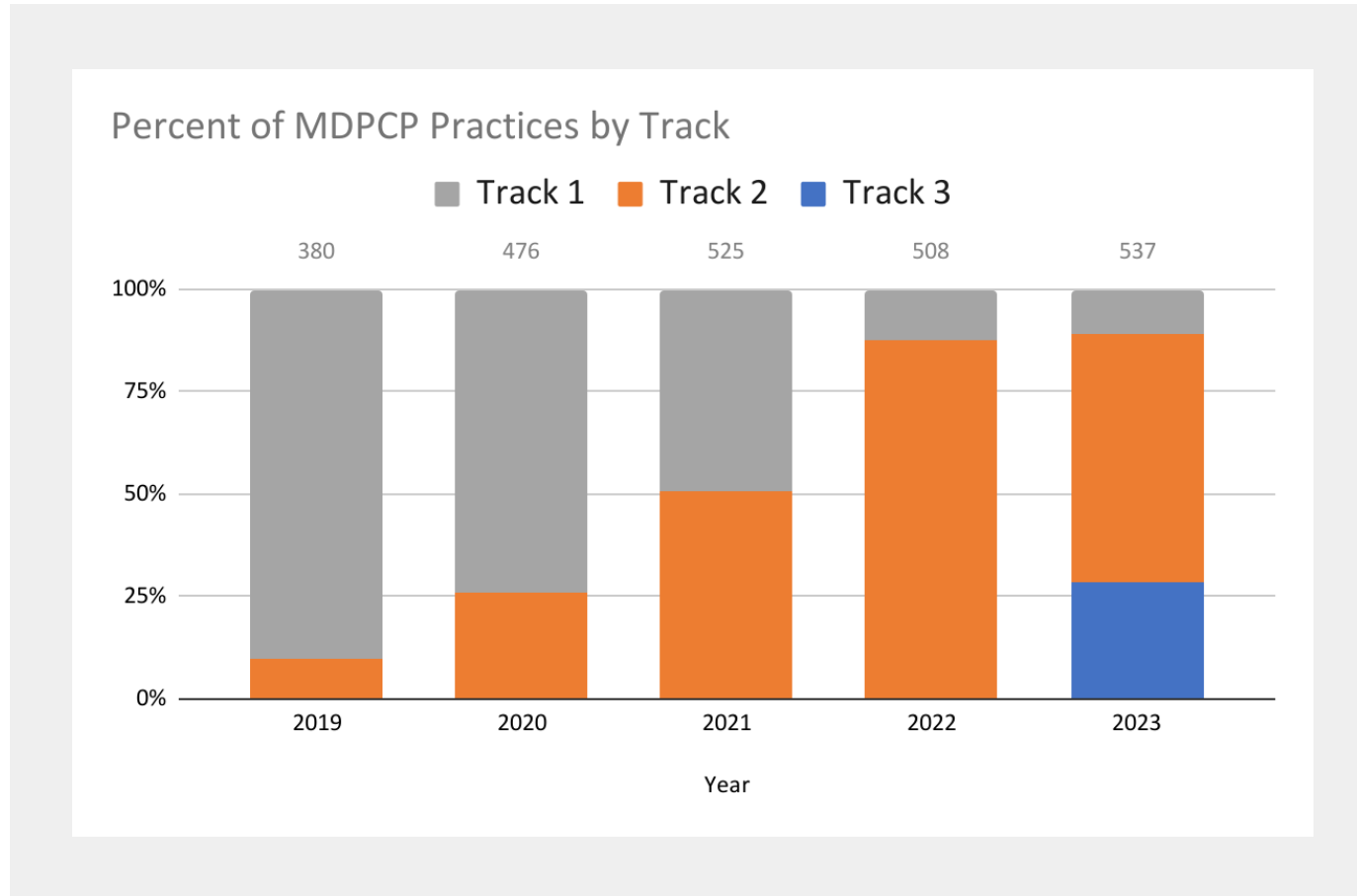
Maryland Primary Care Program MDPCP Advisory Council Meeting

January 10, 2023

**MDPCP Management Office
Chad Perman, Executive Director**

PMO Updates

2023 MDPCP Practices by Track



Track 1

57 Practices

↓ 6 from prior year

Track 2

326 Practices

↓ 119 from prior year

Track 3

154 Practices

↑ 154 from prior year

[Maryland Primary Care Program Performance Dashboard](#)
(to be updated quarterly starting in 2023)



Multi-payer Data Platform Planning

- Description:
 - Multi-payer primary care performance data transparency and intelligence to MDPCP practices
 - Aggregate the data from multiple payers on a central platform for ease of use by the practice in their efforts to improve cost and quality.
- Update:
 - Phase 1 - Working with Medicaid to design and develop practice reports in CRS including key utilization metrics (first half of 2023)
 - *Phase 2 - Explore longer term funding opportunity with CMS and Medicaid (Spring/Summer 2023), potentially to include
 - Multipayer benchmarks and structuring of existing reports
 - Multipayer use cases such as gaps in care and quality measures
 - Multipayer data integration
 - *Phase 3 - Build Multipayer benchmarks and structuring of existing reports (Fall 2023/Winter 2024)

Long Covid

- Updating the PMO strategy for supporting practices in the COVID-19 response
 - Education on Long Covid, including preventing and mitigating the impacts of Long Covid
 - Analysis of prevalence of Long Covid among MDPCP beneficiaries
- 2023 COVID-19 Strategy for addressing Long Covid - share with Council at March meeting where we will request feedback
 - COVID-19 Clinical Advisory Group - consider joining or nominating colleagues
 - Contact Rachel if interested (rachel.grisham@maryland.gov)

CMMI Policy

- **Annual Report** recommendations under consideration by CMMI (note: final report shared with meeting materials)
- **2023 Participation Agreements** were unilaterally amended by CMMI to reflect changes in primary care codes and remove unnecessary restrictions on HEART payment usage for CTOs
- **2023 Payment Methodologies** is being amended by CMMI to reflect changes in primary care codes and some other inaccuracies related to Track 3 - expect release in January
- **Medicaid - MCO Alignment** status in final stage

New JAMA Publication! MDPCP COVID-19 Outcomes Research

“Association of Participation in the Maryland Primary Care Program With COVID-19 Outcomes Among Medicare Beneficiaries”

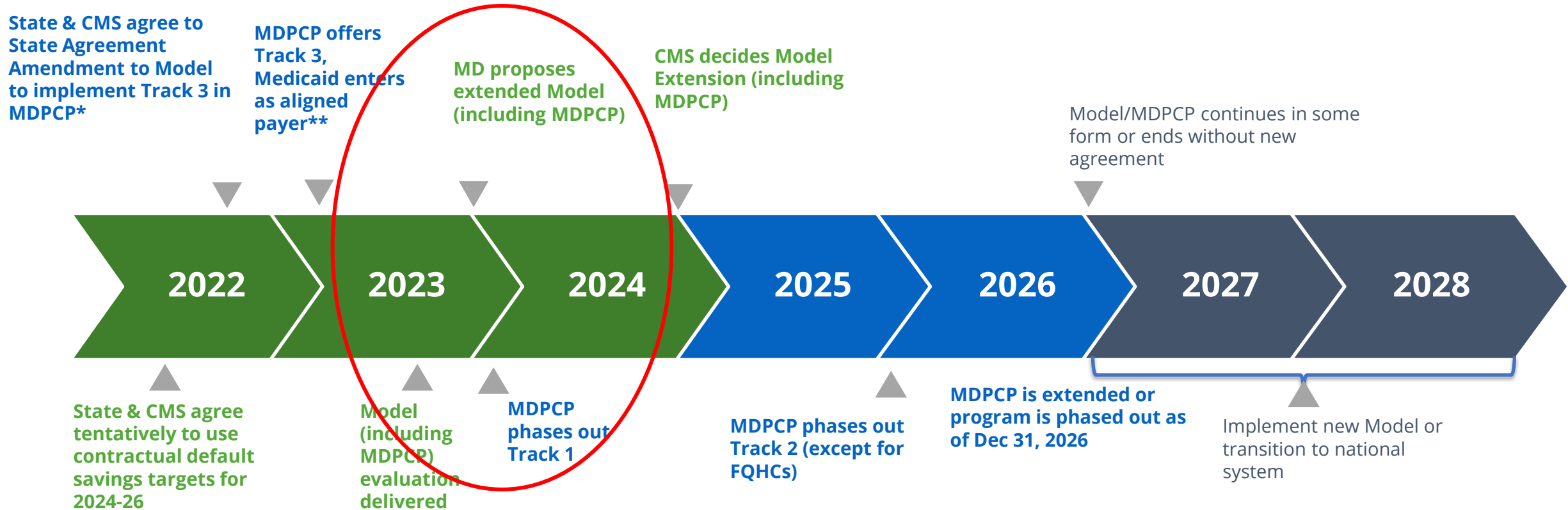
- Compared to a matched Maryland Medicare beneficiary cohort, MDPCP participation during the studied time period resulted in:
 - Higher COVID-19 vaccination rates in all study months (Dec 2020 - March 2022)
 - 12.4% higher rate of COVID-19 vaccine boosters
 - 7.6% lower rate of overall COVID-19 cases
 - 12% lower inpatient admission rate attributed to COVID-19
 - 27% lower death rate attributed to COVID-19
- Follow up study to original paper: “Improving COVID-19 outcomes for Medicare beneficiaries: a public health–supported advanced primary care paradigm.”

Medicaid-MDPCP Alignment

- CMMI approval still pending
- Initial elements for CY 2023:
 - MCO contract updates with potential practices
 - Attribution
 - Quality and financial baseline establishment

TCOC Model Expansion and MDPCP

MDPCP and Total Cost of Care Model Timeline - What's Next for MDPCP?



*[RELEASE-Maryland-and-CMS-advance-Total-Cost-of-Care-Model-and-Maryland-Primary-Care-Program-with-amendment,-MOU](#)

** TBD

Potential Overall Principles for MDPCP

- Sustainable, stable program long term that builds off of existing MDPCP
- Model attractive enough to engage the majority of primary care practices
- Strong state based program leadership with a focus on public health integration
- Hybrid payments sufficient to provide team based care, whole person care, onsite data driven care management, BHI, and support HIT
- Minimize downside risk requirements, offer as an option for practices able and willing to take on financial risk
- Simple, easily captured, meaningful performance data with sufficient financial incentives
- Must include Medicaid with very closely aligned payment, quality and data platform/tools
- Strong focus on behavioral health integration, SDOH/social needs, and health equity
- Multipayer participation and claims-based data platform
- Participation should include safety net providers (e.g., FQHCs)
- Minimize/Reduce administrative burdens in program (e.g. financial reporting)

Overall Principles - Advisory Council Feedback

Payment Elements and AC Feedback

Potential Items

- Establish primary care investment targets in alignment with Maryland's Primary Care Workgroup
- Provide hybrid payments that are simple
- Minimize downside risk for practices/fqhcs that are unable to accept significant financial risk (make T3 optional, maintaining T2)
- Maintain MDPCP waivers and consider additional waivers that improve access to care (e.g., telehealth, payment, cost-sharing)

Advisory Council input

Participation Elements and AC Feedback

Potential Items

- Mandatory vs voluntary
- CTOs
- FQHCs
- Attribution minimums and diversity
- Primary care provider types, services, etc.
- CRISP partnership
- Maryland-only sites
- Model overlaps (e.g. MSSP ACO participation)

Advisory Council input

Next Steps

1. Solicit Advisory Council's feedback today and in writing

Please send additional comments to

mdh.pcmode@maryland.gov by **January 24, 2023**

1. Update Advisory Council at future meetings - discuss feedback from CMMI and any additional input
2. Establish a MDPCP provider feedback group for provider- specific input

SIHIS - MDPCP Approach

Statewide Integrated Health Improvement Strategy - How do we make progress?

SIHIS Population Health Priorities

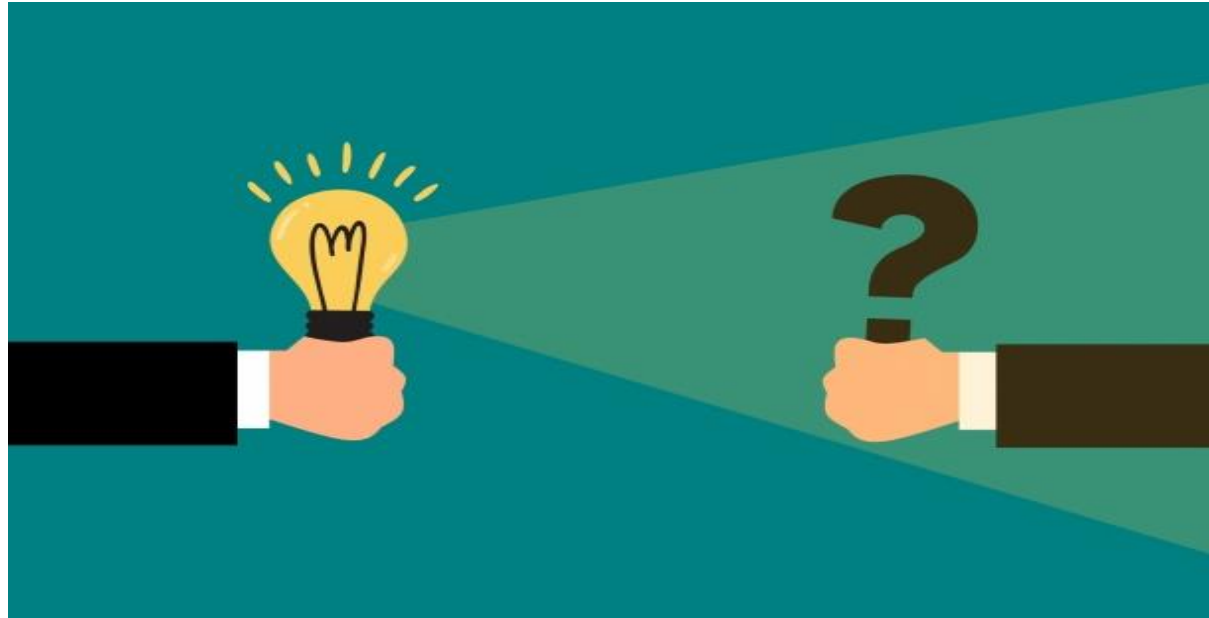
- Diabetes – reduce the mean body mass index for adults and address prediabetes
- Opioid Use Disorder – reduce overdose mortality
- Maternal and Child Health – reduce severe maternal morbidity rate and decrease asthma-related emergency department visit rates for ages 2-17

How do we better incorporate these priorities into the program without overburdening practices?

- *Performance Measures*
- *PMO and CTO Technical Assistance*
- *Other?*

Thank You!

Check out the [MDPCP website](#) for updates and more information



Email mdh.pcmode@maryland.gov with any questions or concerns

Any questions?