

# Annual Report on Selected Maryland Acute Care and Special Hospital Services

Fiscal Year **2013**

Effective July 1, 2012



# Annual Report on Selected Maryland Acute Care and Special Hospital Services

Fiscal Year **2013**



Center for Hospital Services

## Table of Contents

---

	Page
Background.....	1
Acute Care Hospital Bed Capacity .....	1
Licensed Acute Care Hospital Beds in Maryland: FY 2013 .....	2
Demand for Hospital Beds in Maryland Compared with Regional and National Trends.....	8
Critical Care Beds.....	11
Monitored Beds.....	13
Hospital System Affiliation.....	15
Total Available Acute Care Bed Capacity.....	18
Observation Services.....	20
Emergency Department/Center Treatment Capacity .....	22
Hospital Surgical Services Capacity.....	25
Cardiac Catheterization Laboratory Services.....	29
Obstetric and Perinatal Services Capacity .....	31
Special Hospital Services, Comprehensive Care Facilities in the Hospital Setting, and Hospital-Based Psychiatric Care .....	33
Special Hospital Medical Rehabilitation Services .....	33
Other Special Hospital Services (non-psychiatric).....	34
Comprehensive Care Beds in the Hospital Setting.....	36
Psychiatric Hospital Facilities and Services.....	37

### Tables and Charts

#### **Tables:**

1	Licensed Acute Care Beds by Hospital and Service: Maryland, FY 2013 .....	3
2	Trend in Licensed Acute Care Beds by Hospital: Maryland, FY 2003 - 2013 .....	4

3	Percent Change in Total Licensed Acute Care Hospital Beds, by Maryland Region: FY 2004 – 2013.....	5
4	Change in Number of Total Licensed Acute Care Beds by Region: Maryland Hospitals, FY 2012 - 2013.....	7
5	Allocation of Licensed Acute Care Beds by Service: Maryland Hospitals, FY 2004 - 2013 .....	7
6	Allocation of Licensed Acute Care Beds by Service (Percentage), Maryland Hospitals, FY 2004 – FY2013 .....	8
7	Proportion of Total Population Aged 65 and Older, South Atlantic Census Region States, 2010.....	9
8	Critical Care Bed Inventory: Maryland Hospitals, FY 2013.....	12
9	Licensed Acute Care Beds with Monitoring Capability: Maryland Hospitals, FY 2013.....	14
10	Trend in Licensed Acute Care Beds by System Affiliation: Maryland Hospitals, FY 2004 – 2013.....	16
11	Multihospital Systems and Hospitals and Beds by System Status in Maryland, 2003 – 2012.....	17
12	Total Available Physical Acute Care Bed Capacity Reported by Maryland Hospitals, June 1, 2012 .....	19
13	Maryland Acute Care General Hospital Observation Services, June 1, 2012.....	21
14	Summary – Acute Care Hospital Observation Beds, June 1, 2012.....	22
15	Change in Emergency Department/Freestanding Medical Facility Treatment Capacity: Maryland, 2011 – 2012.....	22
16	Inventory of Emergency Department/Freestanding Medical Facility Treatment Capacity: Maryland Hospitals: June 1, 2012 .....	23
17	Trends in Emergency Department/Freestanding Medical Facility Treatment Capacity: Maryland Hospitals, June 1, 2006 – June 1, 2012.....	24
18	Surgical Services Capacity by Hospital and Room Use: Maryland Hospitals, June 1, 2012.....	26
19	Dedicated Cesarean Section Operating Rooms and Procedure Rooms by Hospital: Maryland Hospitals, June 1, 2012.....	27
20	Trends in Number of Surgical Rooms: Maryland Hospitals, 2010 – 2012.....	28
21	Cardiac Catheterization Laboratories, Maryland Acute Care Hospitals, June 1, 2012....	30

22	Obstetric Service Capacity: Maryland Hospitals, June 1, 2012.....	31
23	Newborn Nursery Bassinets, Maryland Hospitals, FY 2013.....	32
24	Inpatient Medical Rehabilitation Facilities and Services by Region and Jurisdiction, June 1, 2012.....	34
25	Licensed Special Hospital (Non-Psychiatric and Non-Rehabilitation) Beds, Maryland, June 1, 2012.....	35
26	Licensed Special Hospital (Non-Psychiatric and Non-Rehabilitation) Beds Located on Acute Care Hospital Campuses: Maryland, June 1, 2012.....	36
27	Licensed Comprehensive Care Beds at Acute Care Hospitals: Maryland, June 1, 2012.....	37
28	Licensed Comprehensive Care Beds at Special Hospitals: June 1, 2012.....	37
29	Inpatient Acute Psychiatric Services Available at General Acute Care Hospitals, Maryland, FY 2012.....	38
30	Inpatient Psychiatric Services Available at Private Special Hospitals – Psychiatric, Maryland, June 1, 2012.....	39
31	Inpatient Psychiatric Services Provided at State Special Hospitals – Psychiatric, Maryland, June 1, 2012.....	39
32	Partial Hospitalization and/or Intensive Outpatient Psychiatric Services at Acute Care Hospitals, June 1, 2012.....	40
33	Partial Hospitalization and/or Intensive Outpatient Services at Private Special Hospitals, Psychiatric: June 1, 2012.....	41
34	Inventory and Utilization of Psychiatric Beds at General Acute Care Hospitals.....	42
35	Inventory and Utilization of Psychiatric Beds at Private Psychiatric Hospitals: Maryland, 2012.....	43
36	Inventory and Utilization of Psychiatric Beds at State Psychiatric Hospitals: Maryland, 2012.....	43

#### **Charts:**

1	Year to Year Change in Total Licensed Acute Care Beds: Maryland Hospitals, FY 2004 – FY 2013 .....	5
2	Total Licensed Acute Care Beds: Maryland Hospitals, FY 2004 – 2013 .....	6
3	Trend in Average Daily Acute Care Patient Census: Maryland Hospitals, CY 1980 – 2011 .....	6

4	Hospital Admissions per 1,000 Population, All Hospital Unit Admissions (Excludes NH Unit Admissions) South Atlantic Census Region States 2006 – 2010 .....	8
5	Hospital Average Length of Stay, All Hospital Unit Admissions ( Excludes NH Unit Admissions) South Atlantic Census Region States 2006 – 2010 .....	9
6	Hospital Admissions per 1,000 Population, All Hospital Unit Admissions (Excludes NH Unit Admissions) U.S. and Maryland, 1994 – 2010.....	10
7	Average Length of Stay, All Hospital Unit Admissions (Excludes NH Unit Admissions) U.S. and Maryland, 1994 – 2009 .....	11
8	Comparison of Multihospital Systems and Non-Multihospital System Hospitals, Maryland, FY 2004 - FY2013.....	17
9	Change in Number of Emergency Treatment Spaces by Type of Space: Maryland, 2006 – 2012.....	25

# **Annual Report on Selected Maryland Acute Care Hospital Services: Fiscal Year 2013**

## **Background**

An Annual Report profiling changes in licensed acute care hospital beds in Maryland's acute care hospitals was initiated in 2001 to document and track changes in the licensed bed inventory following implementation of a standardized annual licensure renewal process based on inpatient census. The process involves notifying hospitals prior to the beginning of each fiscal year concerning the calculated total number of licensed acute care beds for the coming fiscal year. In turn, the hospitals identify the allocation of the total licensed acute care beds across four service categories: medical/surgical/gynecological/addictions ("MSGA"); obstetric, pediatric, and acute psychiatric services. Over time, additional information was added on hospital service capacity, covering emergency department services, surgical services, obstetric and perinatal services, non-acute care beds in the hospital setting, and specialty hospital beds. Information on observation services and cardiac catheterization laboratories were collected for the first time this year and a brief overview of these services is provided in this year's report. This *Annual Report on Selected Maryland Acute Care Hospital Services: Fiscal Year 2013* has been prepared by the Maryland Health Care Commission's Center for Hospital Services.

## **Acute Care Hospital Bed Capacity**

Licensed bed capacity for acute care hospitals in the State of Maryland is dynamic, calculated annually based on average daily acute care inpatient census. The Maryland Health Care Commission, in conjunction with the Health Services Cost Review Commission, calculates the average daily census of acute care patients for each hospital for the 12-month period ending with the first quarter of each year and total licensed acute care bed capacity is established for the next fiscal year at 140% of the hospital's average daily census. This licensure approach reflects an assumption that an average annual occupancy rate of approximately 71.4% for acute care hospital beds is an appropriate benchmark for determining the maximum number of beds an acute care hospital needs to operate.

The initial implementation of this licensure process in 2001 resulted in a statewide reduction in licensed acute care hospital beds of 2,773 beds. Total licensed acute care bed capacity increased each year after the initial reduction in 2001 until fiscal year 2011. Statewide, the total number of licensed acute care hospital beds decreased by 151 beds in FY 2011. Fiscal Year 2012 also saw a decline in licensed acute care hospital beds, a reduction of 146 beds. The decline in licensed acute care hospital beds continues for the third year (FY 2013) with a reduction of 235 licensed acute care beds in FY 2013.

The annual increase from FY 2001 to FY 2010 in total licensed beds ranged from less than 1% to 2.5%. In FY 2011 and FY 2012, the licensed inventory of acute care beds, statewide, decreased by 1.4%. For the current FY 2013, licensed inventory of acute care beds statewide decreased by 2.2%.

Non-acute care beds located in acute care hospitals are excluded from this annual licensure adjustment process, as are special hospitals. Beginning in 2008, the Commission surveyed special hospitals to include inventories of “special hospital” beds (rehabilitation, chronic care, and long term psychiatric care) in this report, including special hospital beds located on or off general acute care hospital campuses.

### **Licensed Acute Care Hospital Beds in Maryland: FY 2013**

Table 1 shows the licensed acute care bed capacity for each acute care hospital, by service, effective July 1, 2012. The calculation of licensed beds for FY2013 based on each hospital’s average daily census from April 1, 2011 through March 31, 2012, results in a total of 10,348 licensed acute care hospital beds in Maryland. Table 2 shows a ten-year trend in licensed acute care beds by hospital. Table 3 shows the percent change by region.

**Table 1. Licensed Acute Care Beds by Hospital and Service: Maryland, FY 2013**

Jurisdiction/ Region	Hospital	Acute Care Services				
		MSGA	Obstetric	Pediatric	Psychiatric	Total
Allegany County	Western Maryland Regional Medical Center	201	9	4	20	234
Frederick County	Frederick Memorial Hospital	240	27	10	21	298
Garrett County	Garrett County Memorial Hospital	24	4	1	0	29
Washington County	Meritus Medical Center*	203	18	6	18	245
<b>WESTERN MARYLAND TOTAL</b>		<b>668</b>	<b>58</b>	<b>21</b>	<b>59</b>	<b>806</b>
Montgomery County	Holy Cross Hospital of Silver Spring	282	88	26	0	396
	MedStar Montgomery Medical Center	100	11	2	25	138
	Shady Grove Adventist Hospital	250	56	25	0	331
	Suburban Hospital	199	0	6	24	229
	Washington Adventist Hospital	191	21	0	40	252
<b>MONTGOMERY COUNTY TOTAL</b>		<b>1,022</b>	<b>176</b>	<b>59</b>	<b>89</b>	<b>1,346</b>
Calvert County	Calvert Memorial Hospital	75	8	1	11	95
Charles County	Civista Medical Center	94	12	4	0	110
Prince George's County	Doctors Community Hospital	207	0	0	0	207
	Fort Washington Medical Center	31	0	0	0	31
	Laurel Regional Hospital	53	10	0	14	77
	Prince George's Hospital Center	152	36	8	28	224
	Southern Maryland Hospital Center	180	30	4	25	239
<i>Total: Prince George's County</i>		<i>623</i>	<i>76</i>	<i>12</i>	<i>67</i>	<i>778</i>
St. Mary's County	MedStar St. Mary's Hospital	60	12	6	12	90
<b>SOUTHERN MARYLAND TOTAL</b>		<b>852</b>	<b>108</b>	<b>23</b>	<b>90</b>	<b>1,073</b>
Anne Arundel County	Anne Arundel Medical Center	312	60	8	0	380
	Baltimore Washington Medical Center	265	18	10	14	307
	<i>Total: Anne Arundel County</i>	<i>577</i>	<i>78</i>	<i>18</i>	<i>14</i>	<i>687</i>
Baltimore City	Bon Secours Hospital	83	0	0	32	115
	James Lawrence Kernan Hospital	9	0	0	0	9
	Johns Hopkins Bayview Medical Center	308	17	10	20	355
	Maryland General Hospital	107	20	0	28	155
	MedStar Good Samaritan Hospital	224	0	0	0	224
	MedStar Harbor Hospital	130	25	5	0	160
	MedStar Union Memorial Hospital	208	0	2	26	236
	Mercy Medical Center	196	32	5	0	233
	Sinai Hospital of Baltimore	344	23	35	24	426
	St. Agnes Hospital	255	23	9	0	287
	The Johns Hopkins Hospital	717	35	140	108	1,000
	University of Maryland Hospital	656	30	58	56	800
	<i>Total: Baltimore City</i>	<i>3,237</i>	<i>205</i>	<i>264</i>	<i>294</i>	<i>4,000</i>
Baltimore County	Greater Baltimore Medical Center	202	60	8	0	270
	MedStar Franklin Square Hospital	285	37	9	24	355
	Northwest Hospital Center	211	0	0	14	225
	St. Joseph Medical Center	204	20	4	19	247
	<i>Total: Baltimore County</i>	<i>902</i>	<i>117</i>	<i>21</i>	<i>57</i>	<i>1,097</i>
Carroll County	Carroll Hospital Center	111	20	7	20	158
Harford County	Harford Memorial Hospital	62	0	0	27	89
	Upper Chesapeake Medical Center	166	12	3	0	181
	<i>Total: Harford County</i>	<i>228</i>	<i>12</i>	<i>3</i>	<i>27</i>	<i>270</i>
Howard County	Howard County General Hospital	189	34	6	20	249
<b>CENTRAL MARYLAND TOTAL</b>		<b>5,244</b>	<b>466</b>	<b>319</b>	<b>432</b>	<b>6,461</b>
Cecil County	Union Hospital of Cecil County	76	6	3	7	92
Dorchester County	Dorchester General Hospital	30	0	0	16	46
Kent County	Chester River Hospital Center	41	0	1	0	42
Somerset County	Edward W. McCready Memorial Hospital	5	0	0	0	5
Talbot County	Memorial Hospital at Easton	87	17	8	0	112
Wicomico County	Peninsula Regional Medical Center	279	20	8	10	317
Worcester County	Atlantic General Hospital	48	0	0	0	48
<b>EASTERN SHORE TOTAL</b>		<b>566</b>	<b>43</b>	<b>20</b>	<b>33</b>	<b>662</b>
<b>MARYLAND TOTAL</b>		<b>8,352</b>	<b>851</b>	<b>442</b>	<b>703</b>	<b>10,348</b>

Source: Maryland Health Care Commission, Acute Care Hospital Inventory (ACH) FY2013.



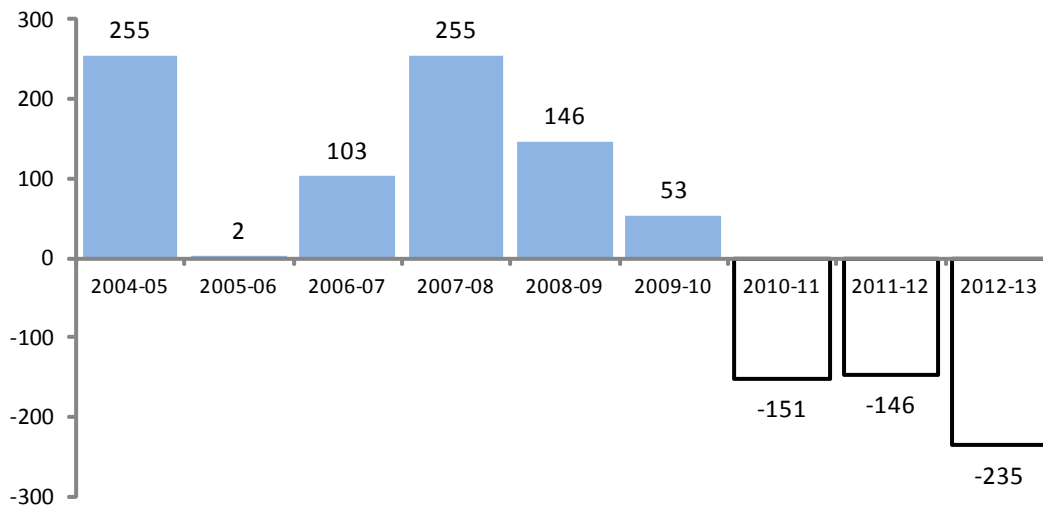
**Table 3. Percent Change in Total Licensed Acute Care Hospital Beds,  
By Maryland Region: Fiscal Years 2004 – 2013**

Region	2004	2005	2006	2007	2008	2009	2010	2011	2012	2013	Average Annual Change 2004 - 2013
Western Maryland	-1.3%	3.4%	-0.4%	-1.3%	5.1%	3.2%	-0.6%	-1.4%	2.9%	-4.2%	0.5%
Montgomery County	0.5%	2.5%	-3.0%	-0.8%	4.8%	3.4%	1.8%	-1.5%	0.7%	-4.5%	0.4%
Southern Maryland	0.9%	3.2%	-2.9%	1.3%	1.3%	-0.5%	-2.5%	-2.8%	1.3%	-5.2%	-0.6%
Central Maryland	1.3%	2.1%	1.1%	1.8%	2.1%	1.1%	1.0%	-1.1%	2.8%	0.1%	1.2%
Eastern Shore	-1.5%	4.1%	1.3%	-0.5%	0.7%	0.9%	-0.6%	-1.3%	1.5%	-11.1%	-0.7%
Maryland Total	0.7%	2.5%	0.0%	1.0%	2.4%	1.4%	0.5%	-1.4%	-1.4%	-2.2%	0.4%

Source: Maryland Health Care Commission

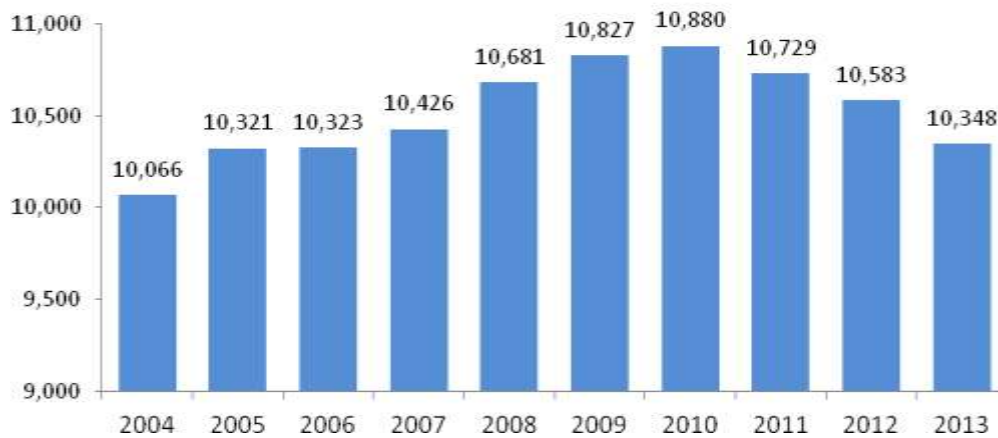
Chart 1 displays the net change in licensed acute care beds over the last ten years, while Chart 2 shows the total number of licensed beds over the same time period.

**Chart 1. Year to Year Change in Total Licensed Acute  
Care Beds: Maryland Hospitals, FY 2004 - 2013**



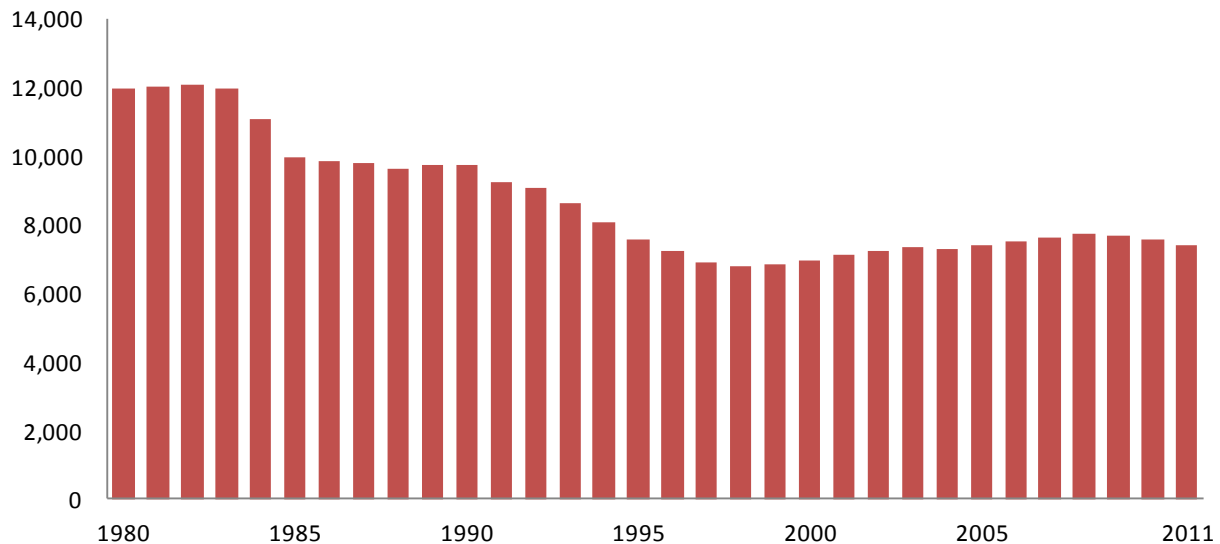
Source: Maryland Health Care Commission

**Chart 2. Total Licensed Acute Care Beds:  
Maryland Hospitals, FY 2004 - 2013**



Source: Maryland Health Care Commission

**Chart 3. Trend in Average Daily Acute Care Patient Census:  
Maryland Hospitals, CY 1980 - 2011**



Source: Maryland Health Care Commission. Note: Data reported is based on the Hospital Discharge Abstract Data Base for Calendar years 1980 – 2011 and reflects the average daily census for all services excluding newborn and rehabilitation services.

While the average daily census of acute care patients began to gradually trend upward in the late 1990's, hospital utilization in Maryland never returned to historic peaks. During calendar year 2009, average daily census saw the first decline since dynamic hospital bed licensure went into effect in 2001. The average daily census declined again in calendar year 2011. Chart 3 shows the trend of declining acute care census from the early 1980s through the late 1990s, the extent of the rebound in census that occurred in the next ten years and the recent return to gradual decline after 2008.

Table 4 profiles the FY 2012 - 2013 change in total licensed acute care hospital beds from a regional perspective. The State as a whole experienced an overall decrease of 2.2% in bed capacity, while only one of Maryland's health planning regions, Central Maryland, actually saw an increase in bed capacity. Statewide, twelve hospitals saw an increase in bed capacity, thirty hospitals saw a decrease in bed capacity and four hospitals had no change in bed capacity from the previous year.

**Table 4. Change in Number of Total Licensed Acute Care Beds by Region:  
Maryland Hospitals, FY 2012 - FY 2013**

Region	Total Number of Hospitals	Net Change in Number of Total Licensed Beds	Percent Change	Number of Hospitals with an Increase in Beds	Number of Hospitals with a Decrease in Beds	Number of Hospitals with No Change in Hospital Beds
Western Maryland	4	(35)	-4.2%	0	4	0
Montgomery County	5	(64)	-4.5%	0	5	0
Southern Maryland	8	(59)	-5.2%	1	5	2
Central Maryland	22	6	0.1%	11	9	2
Eastern Shore	7	(83)	-11.1%	0	7	0
<b>MARYLAND TOTAL</b>	<b>46</b>	<b>(235)</b>	<b>-2.2%</b>	<b>12</b>	<b>30</b>	<b>4</b>

Source: Maryland Health Care Commission

Tables 5 and 6 profile the change in the inventory of licensed acute care hospital beds for the past ten fiscal years for the four acute care bed service categories. As can be seen, there have been no dramatic changes in the allocation of acute care beds by Maryland's hospitals over this period, with MSGA beds accounting for an average of 81% of total acute care beds, obstetric beds comprising an average of 8%, acute psychiatric beds, on average, 7% of total, and pediatric beds, 4% of total.

**Table 5. Allocation of Licensed Acute Care Beds by Service, Maryland Hospitals, FY2003 - 2013**

Service Category	2004	2005	2006	2007	2008	2009	2010	2011	2012	2013
MSGA	8,065	8,318	8,349	8,451	8,694	8,827	8,890	8,738	8,590	8,352
Obstetric	854	851	840	838	848	854	851	848	851	851
Pediatric	454	460	457	459	458	459	451	452	447	442
Acute Psychiatric	693	692	677	678	681	687	688	691	695	703
<b>TOTAL</b>	<b>10,066</b>	<b>10,321</b>	<b>10,323</b>	<b>10,426</b>	<b>10,681</b>	<b>10,827</b>	<b>10,880</b>	<b>10,729</b>	<b>10,583</b>	<b>10,348</b>

Source: Maryland Health Care Commission

**Table 5. Allocation of Licensed Acute Care Beds by Service, Maryland Hospitals, FY2003 - 2013**

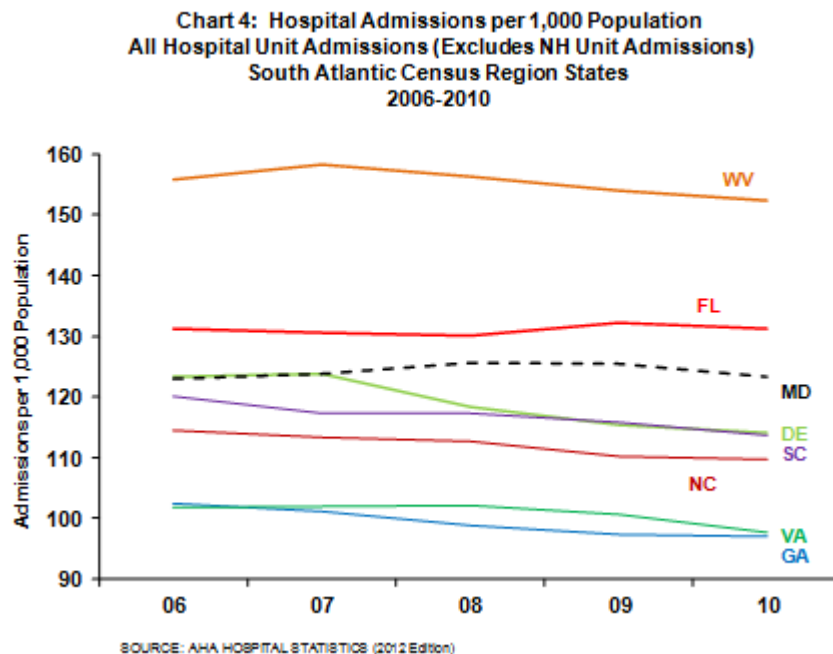
Service Category	2004	2005	2006	2007	2008	2009	2010	2011	2012	2013
MSGA	8,065	8,318	8,349	8,451	8,694	8,827	8,890	8,738	8,590	8,352
Obstetric	854	851	840	838	848	854	851	848	851	851
Pediatric	454	460	457	459	458	459	451	452	447	442
Acute Psychiatric	693	692	677	678	681	687	688	691	695	703
TOTAL	10,066	10,321	10,323	10,426	10,681	10,827	10,880	10,729	10,583	10,348

Source: Maryland Health Care Commission

### **Demand for Hospital Beds in Maryland Compared with Regional and National Trends**

The following graphs profile information from *Hospital Statistics*, an annual publication of the American Hospital Association. They reflect this publication's reported acute care hospital use rates and average stay statistics for Maryland and contrasts the demand reported for other Southeastern States and the U.S. experience.

The first two graphs compare hospital admissions per thousand population and average length of hospital stay in Maryland with the experience of the seven other states in the South Atlantic Census Region. This data is not age-adjusted. The relative age of the population in these states is an important factor in its interpretation. To provide some context, the accompanying table compares the proportion of 65 and older persons in the total population of these states, as recorded in the 2010 U.S. Census of population.

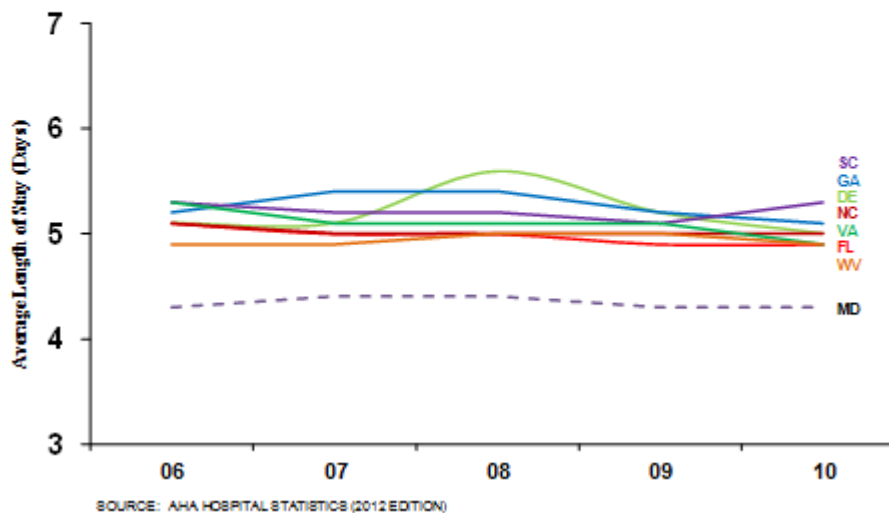


**Table 7.**  
**Proportion of Total Population Aged 65 and Older**  
**South Atlantic Census Region States, 2010**

State	Percentage of Population Aged 65 and Older
Florida	17.30%
West Virginia	16.00%
Delaware	14.40%
South Carolina	13.70%
North Carolina	12.90%
Maryland	12.30%
Virginia	12.20%
Georgia	10.70%

Source: U.S. Census Bureau

**Chart 5: Hospital Average Length of Stay**  
**All Hospital Unit Admissions (Excludes NH Unit Admissions)**  
**South Atlantic Census Region States**  
**2006-2010**



As will be noted, from a regional perspective, Maryland's admissions rate has been lower than that of the states in the South Atlantic region with a higher percentage of population aged 65 and older, Florida and West Virginia, as would be expected. Maryland's admissions rate does not compare well in this recent time period with the Carolinas, Delaware, or Virginia, all of which have only slightly older populations or populations comparable in age to that of Maryland. However,

Maryland stands out as having a distinctly shorter average length of stay, when compared with these other states.

The following graphs, taken from the same data source, provide a longer-term perspective on Maryland and the nation. Maryland had an enviable record with respect to admissions rate and average length of hospital stay in the 1990s but this dramatically changed during the previous decade. However, as with the regional comparison, Maryland has been steadily discharging hospital patients more quickly, on average, than has been the national experience. The gap between Maryland's average length of stay (ALOS) and that of the U.S. is anticipated to narrow because Maryland's hospitals have been reducing one day stays in recent years in response to Health Services Cost Review Commission policy changes, prompted by data indicating a relatively high proportion of one day stays in the State.

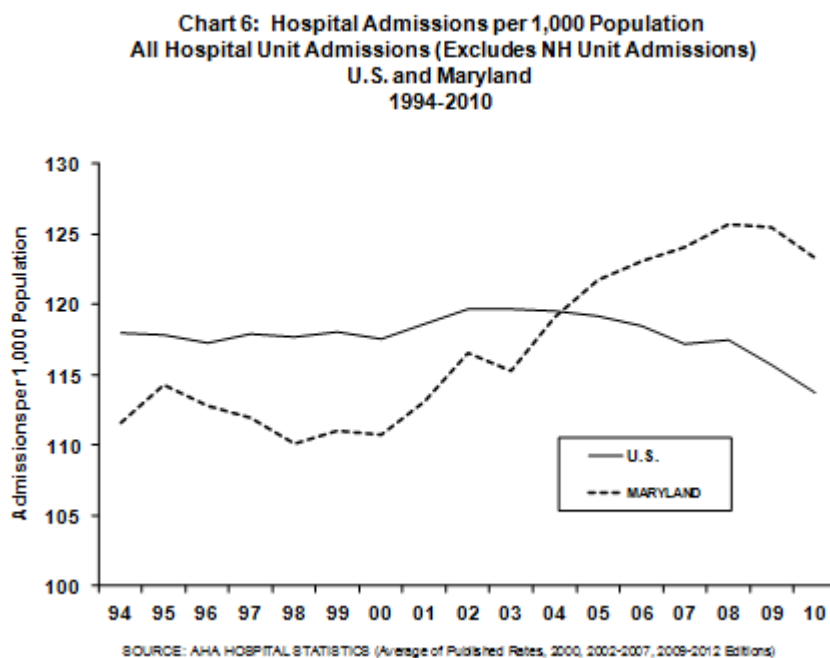
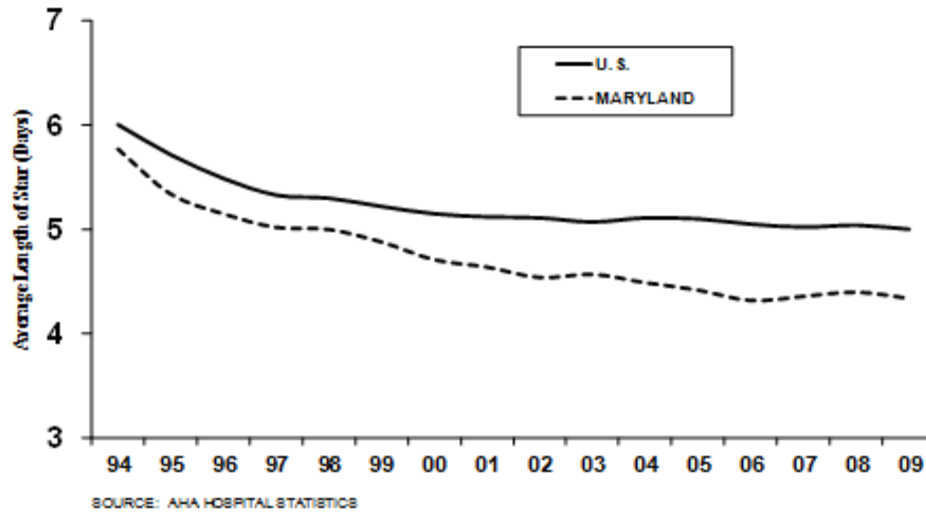


Chart 7: Average Length of Stay  
All Hospital Unit Admissions (Excludes NH Unit Admissions)  
U.S. AND Maryland  
1994-2009



### Critical Care Beds

Table 8 shows the FY 2013 inventory of critical care beds, which in the case of adult critical care beds, are a subset of MSGA beds. Adult critical care beds comprise 15.9% of the state's licensed MSGA bed inventory, ranging from just under 10% in Western Maryland to 17.6% and 16.7% of licensed MSGA beds in Montgomery County and Central Maryland, respectively. Pediatric critical care beds comprise 14.8% of the state's licensed pediatric bed inventory.

**Table 8. Critical Care Bed Inventory:  
Maryland Hospitals, FY 2013**

Jurisdiction/Region	Hospital	Critical Care Beds	
		Adult	Pediatric
Allegany County	Western Maryland Regional Medical Center	20	
Frederick County	Frederick Memorial Hospital	18	
Garrett County	Garrett County Memorial Hospital	4	
Washington County	Meritus Medical Center	24	
<b>WESTERN MARYLAND TOTAL</b>		<b>66</b>	<b>0</b>
Montgomery County	Holy Cross Hospital of Silver Spring	42	
	Montgomery General Hospital	12	
	Shady Grove Adventist Hospital	28	
	Suburban Hospital	64	
	Washington Adventist Hospital	34	
<b>MONTGOMERY COUNTY TOTAL</b>		<b>180</b>	<b>0</b>
Calvert County	Calvert Memorial Hospital	5	
Charles County	Civista Medical Center	20	
Prince George's County	Doctors Community Hospital	24	
	Fort Washington Medical Center	4	
	Laurel Regional Hospital	10	
	Prince George's Hospital Center	34	
	Southern Maryland Hospital	24	
St. Mary's County	MedStar St. Mary's Hospital	12	
<b>SOUTHERN MARYLAND TOTAL</b>		<b>133</b>	<b>0</b>
Anne Arundel County	Anne Arundel Medical Center	20	
	Baltimore Washington Medical Center	24	
Baltimore City	Bon Secours Hospital	13	
	James Lawrence Kernan Hospital	5	
	Johns Hopkins Bayview Medical Center*	52	
	Maryland General Hospital	13	
	MedStar Good Samaritan Hospital	17	
	MedStar Harbor Hospital	22	
	MedStar Union Memorial Hospital	60	
	Mercy Medical Center	32	
	Sinai Hospital of Baltimore	43	9
	St. Agnes Hospital	28	2
	The Johns Hopkins Hospital	116	40
	University of Maryland Hospital*	266	24
Baltimore County	Greater Baltimore Medical Center	36	
	MedStar Franklin Square Hospital	28	
	Northwest Hospital Center	16	
	St. Joseph Medical Center	38	
Carroll County	Carroll Hospital Center	12	
Harford County	Harford Memorial Hospital	6	
	Upper Chesapeake Medical Center	14	
Howard County	Howard County General Hospital	16	
<b>CENTRAL MARYLAND TOTAL</b>		<b>877</b>	<b>75</b>
Cecil County	Union Hospital of Cecil County	6	
Dorchester County	Dorchester General Hospital	6	
Kent County	Chester River Hospital Center	6	
Somerset County	Edward W. McCready Memorial Hospital	0	
Talbot County	Memorial Hospital at Easton	10	
Wicomico County	Peninsula Regional Medical Center	42	
Worcester County	Atlantic General Hospital	6	
<b>EASTERN SHORE TOTAL</b>		<b>76</b>	<b>0</b>
<b>MARYLAND STATE TOTAL</b>		<b>1,332</b>	<b>75</b>

Source: Maryland Health Care Commission. Note: Adult critical care beds include all medical surgical intensive care and coronary care beds and excludes definitive observation/stepdown beds, pediatric intensive care beds and NICU bassinets. Adult critical care beds are part of the larger MSGA inventory.

\*Johns Hopkins Bayview includes 10 Burn Critical Care Beds, and University of Maryland Hospital includes 115 Shock Trauma Beds.

## **Monitored Beds**

Monitored beds are beds which the hospital identified as equipped with cardiac monitoring. Monitorable means that cardiac monitoring is available for identified hospital beds. Previously this meant a bed was hard-wired for cardiac monitoring. With the institution of remote centralized monitoring, a wireless transmitting system that can be viewed on a central surveillance system, cardiac monitoring is no longer dependent on a stationary bed being hard wired. Wireless monitoring can detect early warning signs and changes in a patient's condition through the continuous automated collection of key vital signs.

Table 9 identifies the proportion of total licensed acute care beds, by hospital, which the hospital identified as equipped with cardiac monitoring.

From FY 2008 to FY 2012, the number of monitored beds reported by Maryland's acute care general hospitals increased 32%, this compares to the 18% increase from FY 2008 to FY 2011, in part due to the increase of monitoring capability with the introduction of wireless centralized systems. While monitored beds as a percentage of all licensed beds, from FY 2008 to FY 2011 increased an average of 5.6% per year, in FY 2012, the increase in monitorable beds was 12%. The increase for FY 2013 is 4.4%. The number of monitorable beds reported by Maryland's acute care hospitals increased from 51% of total licensed beds in FY 2012 to 55% for FY 2013.

In addition to collecting monitorable bed inventories for licensed acute care beds, MHCC also compiles that data for bassinets for hospitals that provide obstetrical and newborn nursery services. Thirty-four hospitals provide obstetric and perinatal services and report a combined total of 1,381 newborn nursery bassinets; of these bassinets, 533 have monitoring capability.

**Table 9. Licensed Acute Care Beds with Monitoring Capability:  
Maryland Hospitals, FY2013**

<b>Jurisdiction/Region</b>	<b>Hospital Name</b>	<b>FY 2013 Licensed Beds</b>	<b>Monitorable Beds</b>	<b>Monitorable as % of Licensed Beds</b>
Allegany County	Western Maryland Regional Medical Center	234	96	41.0%
Frederick County	Frederick Memorial Hospital	298	176	59.1%
Garrett County	Garrett County Memorial Hospital	29	29	100.0%
Washington County	Meritus Medical Center	245	141	57.6%
	<b>WESTERN MARYLAND TOTAL</b>	<b>806</b>	<b>442</b>	<b>54.8%</b>
Montgomery County	Holy Cross Hospital of Silver Spring	396	150	37.9%
	MedStar Montgomery General Hospital	138	42	30.4%
	Shady Grove Adventist Hospital	331	259	78.2%
	Suburban Hospital	229	94	41.0%
	Washington Adventist Hospital	252	146	57.9%
	<b>MONTGOMERY COUNTY TOTAL</b>	<b>1,346</b>	<b>691</b>	<b>51.3%</b>
Calvert County	Calvert Memorial Hospital	95	42	44.2%
Charles County	Civista Medical Center	110	80	72.7%
Prince George's County	Doctors Community Hospital	207	84	40.6%
	Fort Washington Medical Center	31	16	51.6%
	Laurel Regional Hospital	77	36	46.8%
	Prince George's Hospital Center	224	120	53.6%
	Southern Maryland Hospital Center	239	166	69.5%
St. Mary's County	MedStar St. Mary's Hospital	90	56	62.2%
	<b>SOUTHERN MARYLAND TOTAL</b>	<b>1,073</b>	<b>600</b>	<b>55.9%</b>
Anne Arundel County	Anne Arundel Medical Center	380	294	77.4%
Baltimore City	Baltimore Washington Medical Center	307	148	48.2%
	Bon Secours Hospital	115	44	38.3%
	James Lawrence Kernan Hospital	9	9	100.0%
	Johns Hopkins Bayview Medical Center	355	169	47.6%
	Maryland General Hospital	155	68	43.9%
	MedStar Good Samaritan Hospital of Maryland	224	99	44.2%
	MedStar Harbor Hospital	160	97	60.6%
	MedStar Union Memorial Hospital	236	127	53.8%
	Mercy Medical Center	233	113	48.5%
	Sinai Hospital of Baltimore	426	188	44.1%
	St. Agnes Hospital	287	126	43.9%
	The Johns Hopkins Hospital	1,000	467	46.7%
	University of Maryland Hospital	800	632	79.0%
Baltimore County	Greater Baltimore Medical Center	270	86	31.9%
	MedStar Franklin Square Hospital	355	154	43.4%
	Northwest Hospital Center	225	95	42.2%
	St. Joseph Medical Center	247	156	63.2%
Carroll County	Carroll Hospital Center	158	54	34.2%
Harford County	Harford Memorial Hospital	89	65	73.0%
	Upper Chesapeake Medical Center	181	133	73.5%
Howard County	Howard County General Hospital	249	126	50.6%
	<b>CENTRAL MARYLAND TOTAL</b>	<b>6,461</b>	<b>3,450</b>	<b>53.4%</b>
Cecil County	Union Hospital of Cecil County	92	60	65.2%
Dorchester County	Dorchester General Hospital	46	16	34.8%
Kent County	Chester River Hospital Center	42	30	71.4%
Somerset County	Edward W. McCready Memorial Hospital	5	5	100.0%
Talbot County	Memorial Hospital at Easton	112	46	41.1%
Wicomico County	Peninsula Regional Medical Center*	317	299	94.3%
Worcester County	Atlantic General Hospital	48	26	54.2%
	<b>EASTERN SHORE TOTAL</b>	<b>662</b>	<b>482</b>	<b>72.8%</b>
<b>STATE TOTAL</b>		<b>10,348</b>	<b>5,665</b>	<b>54.7%</b>

Source: MHCC Supplemental Survey: Inpatient Monitoring Capacity, 2012. Data are self reported. Capacity for inpatient monitoring means cardiac monitoring is available for the reported numbers of beds. Note: The calculated percentage reflects total licensed beds and does not necessarily reflect the actual complement of beds set up and staffed by the hospital.

## **Hospital System Affiliation**

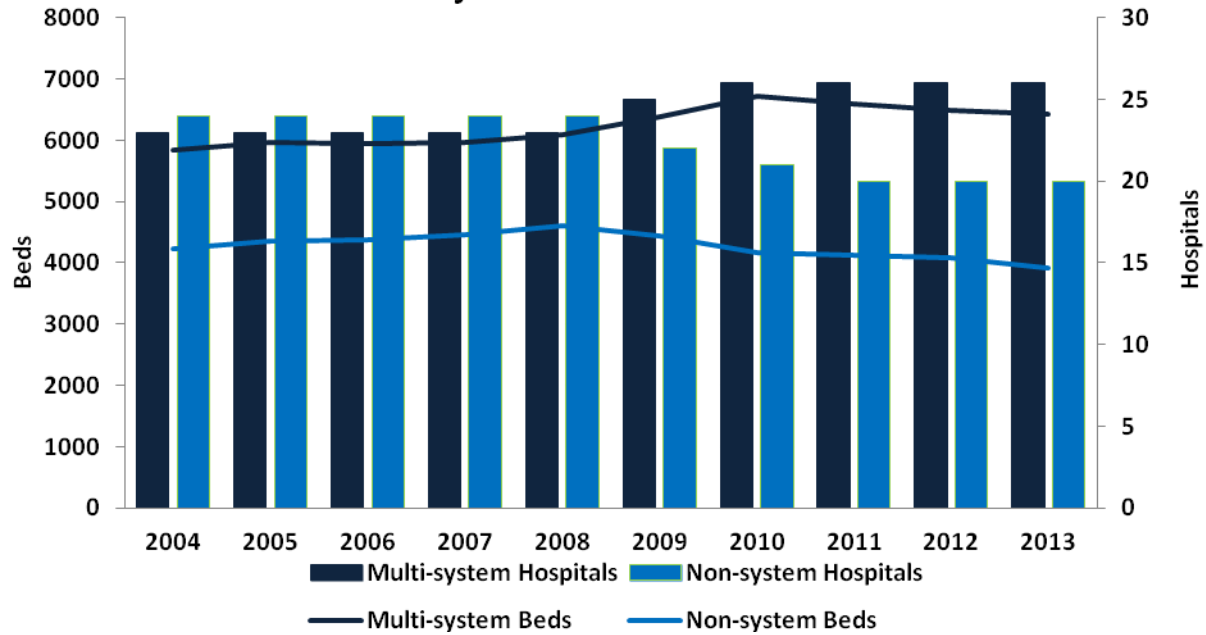
Table 10 profiles the trend in licensed acute care beds for hospitals that are members of multihospital systems and for hospitals that are independent. Fifty seven percent (57%) of Maryland's acute care general hospitals are part of the state's seven multihospital systems.

Chart 8 shows the number of Maryland hospitals and beds that are part of a multihospital system and the number of hospitals and beds that are not part of a multihospital system in Maryland. Although there was little change from 2001 through 2007, 2009 through 2012 shows an increase in the number of hospitals joining multihospital systems.

Table 11 compares the growth and annual change in the number of hospitals and beds that are part of Maryland multihospital systems with hospitals that are independent, reflecting the annual percent change in the distribution of beds and the change during the last ten years (FY 2004 to FY 2013).



**Chart 8. Comparison of Multihospital Systems and Non-Multihospital System Hospitals, Maryland FY2004 - FY2013**



Source: Maryland Health Care Commission

**Table 11. Multihospital Systems and Hospitals and Beds by System Status, Maryland, FY 2006 - FY 2013**

System Status	2006	2007	Annual Change	2008	Annual Change	2009	Annual Change	2010	Annual Change	2011	Annual Change	2012	Annual Change	2013	Annual Change	Change 2006-2013
<b>Multihospital Systems</b>	9	8		8		8		8		7		7		7		
<b>Multihospital System Hospitals</b>	23	23		23		25		26		26		26		26		13.0%
<b>Beds</b>	5,950	5,973	0.4%	6,082	1.8%	6,384	5.0%	6,713	5.2%	6,601	-1.7%	6,491	-1.7%	6,422	-1.1%	7.9%
<b>Percent of Maryland Hospitals</b>	50%	50%		50%		53%		55%		57%		57%		56.5%		
<b>Percent of Beds</b>	58%	57%		57%		59%		62%		62%		62%		62.7%		
<b>Non-system Hospitals</b>	24	24		24		22		21		20		20		20		-16.7%
<b>Beds</b>	4,373	4,453	1.8%	4,599	3.3%	4,443	-3.4%	4,167	-6.2%	4,128	-0.9%	4,092	-0.9%	3,926	-4.1%	-10.2%
<b>Percent of Maryland Hospitals</b>	51%	51%		51%		47%		45%		43%		43%		43.5%		
<b>Percent of Beds</b>	42%	43%		43%		41%		38%		38%		39%		37.9%		
<b>Total Acute General Hospital</b>	47	47		47		47		47		46		46		46		-2.1%
<b>Total Beds</b>	10,323	10,426	1.0%	10,681	2.4%	10,827	1.4%	10,880	0.5%	10,729	-1.4%	10,583	-1.4%	10,348	-2.2%	0.2%

Source: Maryland Health Care Commission

### **Total Available Acute Care Bed Capacity**

The Commission surveys hospitals for the total number of acute care beds they could physically accommodate, if necessary. Available acute care bed capacity is defined as the total number of acute inpatient beds that are available for use, or that could be physically set up in space appropriate for licensed acute inpatient care, as admissions might warrant. It is a physical count of beds based on the available patient rooms with headwalls, measuring the maximum operating capacity under normal, non-emergency circumstances, rather than a measure of staffing capacity.

The survey shows that 37 general hospitals in Maryland with 6,162 licensed acute care beds report the availability of physical bed capacity that exceeds their licensed capacity. These 37 hospitals, in the aggregate, report a physical capacity for 7,704 beds. This excess physical bed capacity (1,542 beds) would potentially be available to accommodate short term growth in demand and, if necessary, major emergencies and disasters, so long as staffing resources could be secured. Southern Maryland has the greatest excess, with reported physical bed capacity exceeding licensed bed capacity by 456 beds, followed by Central Maryland with 426 more physical beds than licensed beds.

Nine hospitals report that their physical capacity for acute care beds, as of June, 2012, is less than their licensed bed capacity. These hospitals have a combined total of 4,186 licensed acute care beds and report that, in the aggregate, they only have physical capacity to set up 3,926 acute care beds, a difference of 260 beds.

Statewide, the Commission's June 1, 2012 survey identifies a net of 1,282 beds of physical bed capacity in excess of licensed bed capacity. The results of this survey are shown in Table12.<sup>1</sup>

---

<sup>1</sup> The data are self reported and not verified by the Commission. To the extent possible, the Commission verifies hospital physical bed capacity on a case by case basis, when reviewing hospital expansion, renovation, and replacement projects submitted under the Certificate of Need Program.

**Table 12. Total Available Physical Acute Care Bed Capacity Reported by  
Maryland Hospitals, June 1, 2012**

<b>Hospital Name</b>	<b>Licensed Beds FY 2013</b>	<b>Total Available Physical Capacity</b>	<b>Difference</b>
Anne Arundel Medical Center	380	336	(44)
Atlantic General Hospital	48	62	14
Baltimore Washington Medical Center	307	325	18
Bon Secours Hospital	115	152	37
Calvert Memorial Hospital	95	126	31
Carroll Hospital Center	158	215	57
Chester River Hospital Center	42	46	4
Civista Medical Center, Inc.	110	155	45
Doctors Community Hospital, Inc.	207	220	13
Dorchester General Hospital, Inc.	46	80	34
Edward W. McCready Memorial Hospital	5	26	21
Fort Washington Medical Center	31	37	6
Frederick Memorial Hospital	298	315	17
Garrett County Memorial Hospital	29	45	16
Greater Baltimore Medical Center, Inc.	270	342	72
Harford Memorial Hospital, Inc.	89	128	39
Holy Cross Hospital	396	379	(17)
Howard County General Hospital	249	238	(11)
James Lawrence Kernan Hospital	9	28	19
Johns Hopkins Bayview Medical Center	355	348	(7)
Laurel Regional Hospital	77	171	94
Maryland General Hospital	155	230	75
MedStar Franklin Square Hospital Center	355	342	(13)
MedStar Good Samaritan Hospital	224	253	29
MedStar Harbor Hospital	160	213	53
MedStar Montgomery Medical Center	138	207	69
MedStar St. Mary's Hospital	90	129	39
MedStar Union Memorial Hospital	236	329	93
Memorial Hospital at Easton	112	150	38
Mercy Medical Center, Inc.	233	238	5
Meritus Medical Center	245	258	13
Northwest Hospital Center	225	201	(24)
Peninsula Regional Medical Center	317	380	63
Prince George's Hospital Center	224	367	143
Shady Grove Adventist Hospital	331	336	5
Sinai Hospital of Baltimore	426	398	(28)
Southern Maryland Hospital Center	239	324	85
St. Agnes Hospital	287	377	90
St. Joseph Medical Center	247	315	68
Suburban Hospital	229	247	18
The Johns Hopkins Hospital	1,000	983	(17)
Union Hospital of Cecil County	92	129	37
University of Maryland Medical Center	800	701	(99)
Upper Chesapeake Medical Center	181	195	14
Washington Adventist Hospital	252	304	52
Western Maryland Regional Medical Center	234	250	16
<b>TOTAL</b>	<b>10,348</b>	<b>11,630</b>	<b>1,282</b>

Source: Maryland Health Care Commission

Note: Total available physical capacity is defined as the total number of acute inpatient beds that are available for use, including those that could be physically set up in space appropriate for licensed acute inpatient care as admissions might warrant. This should be a count of potentially available physical bed capacity rather than a measure of staffing capacity or a reflection of current use of patient care rooms. This is determined by the number of headwalls and/or gas lines that could be made available for inpatient use, without renovations. Rooms with two headwalls/gas lines should be counted as having capacity for two beds, and rooms with one headwall/gas line should be counted as having capacity for one bed, regardless of their current use. It does not include space currently used for non-acute or special hospital beds.

## **Observation Services**

Observation services are those services furnished by the hospital on the hospital's premises, including use of a bed and periodic monitoring by the hospital's nursing or other staff, which are reasonable and necessary to determine the need for a possible admission to the hospital as an inpatient. Such services must be ordered and documented in writing as to time and method (FAX, telephone, etc.), given by a medical staff practitioner. Observation services may or may not be provided in a distinct area of the hospital. Observation services include, but are not limited to; monitoring of vital life signs; collecting laboratory samples for diagnostic testing, operating of specialized equipment and assisting physicians during patient examination and treatment; changing of dressings and cleaning of wounds and incisions; observing and recording the emotional stability of patients; observing patients for reaction to drugs; administering specified medication; and infusing fluids intravenously.

Observation services are identified as a cost center by the Maryland Health Services Cost Review Commission and the standard unit of measure is hours. Extended recovery time for scheduled ambulatory surgery time, emergency and/or labor and delivery observation are separate cost centers and are not included in observation services.

Hospitals were asked to report whether they use licensed beds, distinct unit (non-licensed) observation beds, or a combination of both licensed and distinct unit observation beds to provide services to observation patients. If distinct unit observation beds were used, the hospitals reported how many distinct unit observation beds were available as of June 1, 2012. The hospitals were also asked if there were plans to expand the number of distinct unit observation beds and, if so, how many beds would be added. Finally, the hospitals were requested to report how many licensed beds were occupied by observation patients on an average day in the past twelve months.

Twelve hospitals report the existence of distinct unit observation beds. However, only two hospitals use distinct unit observation beds exclusively. Thirty-three (33) hospitals use licensed beds only, and 10 hospitals use a combination of distinct unit observation beds and licensed beds.<sup>2</sup> The total number of distinct unit observation beds available for all Maryland hospitals is 169. Five hospitals plan to expand the number of distinct unit observation beds and two hospitals plan to designate, for the first time, beds for observation services within the next twelve months. The total additional projected distinct unit observation beds is 57.

Table 13 below shows the responses as reported by each hospital and Table 14 provides a summary of all Maryland hospitals.

---

<sup>2</sup> James Lawrence Kernan Hospital does not provide emergency services and does not provide observation services.

**Table 13. Maryland Acute Care General Hospital Observation Services  
June 1, 2012**

<b>Hospital Name</b>	<b>Distinct Unit Observation Beds Only</b>	<b>Licensed Beds Only</b>	<b>Combination of Distinct Unit Observation and Licensed Beds</b>	<b>Number of Distinct Unit Observation Beds Available</b>	<b>Average Daily Occupation of Observation Beds</b>	<b>Planned Expansion of Distinct Unit Observation Beds</b>	<b>Number of Beds Planned for Expansion</b>
Western Maryland Regional Medical Center	√			20	4.0		
Frederick Memorial Hospital		√		0	14.0		
Garrett County Hospital		√		0	2.0		
Meritus Medical Center		√		10	10.0		
<b>Western Maryland Total</b>	<b>1</b>	<b>3</b>	<b>0</b>	<b>30</b>	<b>-</b>	<b>-</b>	<b>0</b>
Holy Cross Hospital of Silver Spring			√	19	7.3		
MedStar Montgomery General Hospital			√	8	5.0	yes	4
Shady Grove Adventist Hospital			√	14	9.0		
Suburban Hospital		√		0	8.3	yes	8
Washington Adventist Hospital		√		0	4.3		
<b>Montgomery County Total</b>	<b>0</b>	<b>2</b>		<b>41</b>	<b>-</b>	<b>-</b>	<b>12</b>
Calvert Memorial Hospital		√		0	4.5		
Civista Medical Center		√		0	6.0		
Doctors Community Hospital			√	11	1.0	yes	4
Fort Washington Medical Center		√		0	6.0		
Laurel Regional Hospital		√		0	3.5		
Prince George's Hospital Center		√		0	15.8		
Southern Maryland Hospital Center		√		0	19.0		
MedStar St. Mary's Hospital		√		0	8.0		
<b>Southern Maryland Total</b>	<b>0</b>	<b>7</b>		<b>11</b>	<b>-</b>	<b>-</b>	<b>4</b>
Anne Arundel Medical Center			√	31	2.8		
Baltimore Washington Medical Center			√	10	16.0	yes	5
Bon Secours Hospital		√		0	8.0		
James Lawrence Kernan Hospital*	-	-	-	-	-	-	-
Johns Hopkins Bayview Medical Center			√	3	10.0	yes	15
Maryland General Hospital		√		0	5.8		
MedStar Good Samaritan Hospital		√		0	8.7		
MedStar Harbor Hospital		√		0	6.3		
MedStar Union Memorial Hospital			√	14	3.0		
Mercy Medical Center		√		0	3.4		
Sinai Hospital of Baltimore		√		0	1.4		
St. Agnes Hospital		√		0	10.0		
The Johns Hopkins Hospital		√		0	5.0		
University of Maryland Hospital		√		0	12.0	yes	11
Greater Baltimore Medical Center		√		0	17.0		
MedStar Franklin Square Hospital			√	12	12.0		
Northwest Hospital Center		√		0	0.4		
St. Joseph Medical Center		√		0	5.8		
Carroll Hospital Center		√		0	7.6		
Harford Memorial Hospital		√		0	7.0		
Upper Chesapeake Medical Center		√		0	15.0		
Howard County General Hospital			√	13	11.0		
<b>Central Maryland Total</b>	<b>0</b>	<b>15</b>		<b>83</b>	<b>-</b>	<b>-</b>	<b>31</b>
Union Hospital of Cecil County		√		0	3.0	yes	10
Dorchester General Hospital		√		0	2.0		
Chester River Hospital Center		√		0	1.4		
Edward W. McCready Memorial Hospital		√		0	0.7		
Memorial Hospital at Easton	√			4	1.5		
Peninsula Regional Medical Center		√		0	8.7		
Atlantic General Hospital		√		0	5.0		
<b>Eastern Shore Total</b>	<b>1</b>	<b>6</b>		<b>4</b>	<b>-</b>	<b>-</b>	<b>10</b>
<b>MARYLAND STATE TOTAL</b>	<b>2</b>	<b>33</b>	<b>10</b>	<b>169</b>		<b>7</b>	<b>57</b>

Source: MHCC, Supplemental Survey Observation Services, June 1, 2012. \*James Lawrence Kernan Hospital does not provide emergency services and does not have observation services.

**Table 14. Summary - Acute Care Hospital Observation Beds, June 1, 2012**

<b>Observation Services</b>	<b>Total Hospitals</b>	<b>Total Distinct Unit Observation Beds</b>
Distinct Unit Observation Beds Only	2	24
Licensed Beds Only	33	-
Combined Distinct Unit/Licensed Observation Beds	10	145
Total Number of Distinct Unit Observation Beds, All Hospitals	45	169
Hospitals with Planned Expansion	7	
Number of Proposed Distinct Unit Observation Beds	57	

Source: Maryland Health Care Commission

### **Emergency Department/ Freestanding Medical Facility (FMF) Treatment Capacity**

Maryland has 45 emergency departments located in acute care hospitals and additional emergency treatment spaces at three freestanding medical facilities operated by hospital organizations that provide emergency services.<sup>3</sup> Bowie Health Center, located in Prince George's County, has 21 treatment spaces allocated to emergency care. The Shady Grove Emergency Center at Germantown in Montgomery County also has 21 treatment spaces. The Queen Anne's Emergency Center, under the authority of Memorial Hospital of Easton has 14 emergency center treatment spaces in Queen Anne's County.

Table 15 shows the change in emergency treatment capacity from a regional perspective. Ten (10) emergency departments increased capacity in this past year. None of the 48 emergency departments showed a decline in the number of treatment spaces from 2011 to 2012. Overall, Maryland emergency departments/facilities reported an increase of 94 (4.8%) treatment spaces.

**Table 15. Change in Emergency Department/ Freestanding Medical Facility Treatment Capacity: Maryland, 2011 - 2012**

REGION	Total Number of Emergency Departments and FMFs	Net Change in Emergency Treatment Spaces	Percent Change in Capacity in Emergency Treatment Spaces	Emergency Departments or FMFs with an Increase in Capacity	Emergency Departments or FMFs with a Decrease in Capacity	Emergency Departments or FMFs with No Change in Capacity
Western Maryland	4	0	0.0%	0	0	4
Montgomery County*	6	0	0.0%	0	0	6
Southern Maryland*	9	8	2.7%	1	0	8
Central Maryland**	21	75	0.9%	8	0	13
Eastern Shore*	8	11	12.7%	1	0	7
State Total	48	94	2.2%	10	0	38

Source: Maryland Health Care Commission. \*Montgomery County includes Shady Grove Emergency Center at Germantown, Southern Maryland includes emergency treatment capacity at the Bowie Health Center, and the Eastern Shore includes the Queen Anne's Emergency Center.

\*\*Johns Hopkins Hospital operates 2 distinct emergency centers, the main emergency department and a pediatric emergency department, the emergency departments are combined and reported as one in Table 15.

Table 16 summarizes the Commission's supplemental survey of emergency department treatment capacity by hospital or freestanding medical facility and jurisdiction and region, identifying how Maryland's hospitals classify their Emergency Department or Freestanding Medical Facility treatment spaces.

<sup>3</sup> James Lawrence Kernan Hospital in Baltimore City is the only acute care hospital in Maryland that does not operate an emergency department.

**Table 16. Inventory of Emergency Department/ Freestanding Medical Facility Treatment Capacity:  
Maryland: June 1, 2012**

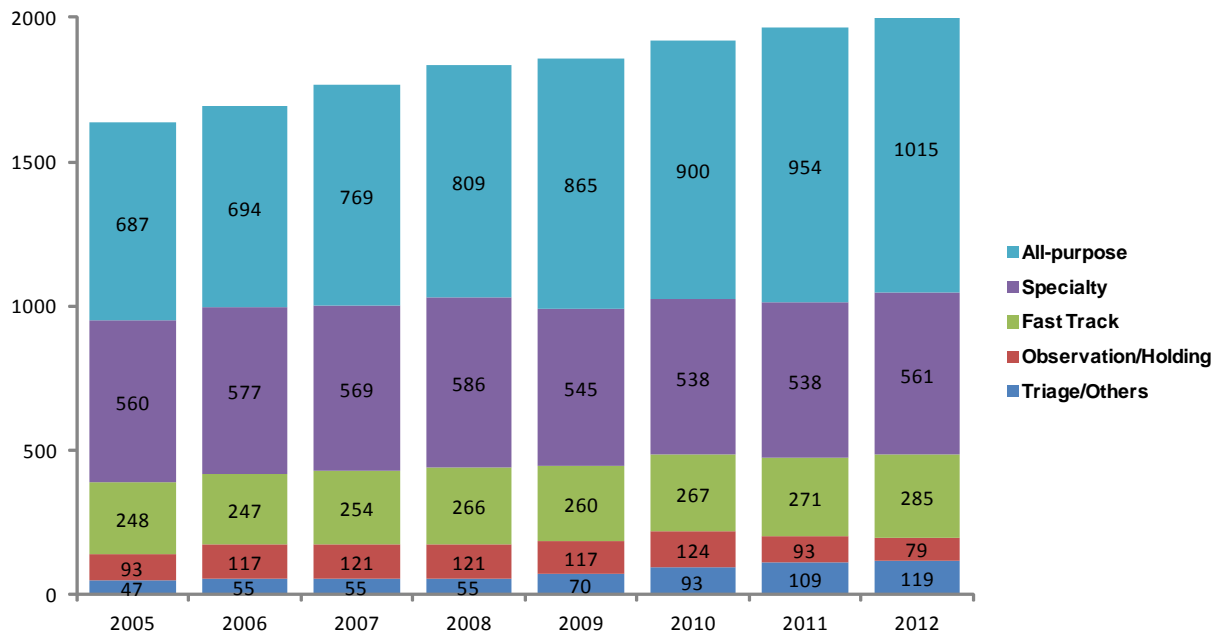
Jurisdiction/Region	Hospital Name	Treatment Spaces			Non-Treatment Spaces*
		Total Treatment Spaces	Monitored Spaces	Non-Monitored Spaces	
Allegany County	Western Maryland Regional Medical Center	53	30	23	4
Frederick County	Frederick Memorial Hospital	64	23	41	3
Garrett County	Garrett County Hospital	13	12	1	2
Washington County	Meritus Medical Center	55	44	11	1
	<b>WESTERN MARYLAND TOTAL</b>	<b>185</b>	<b>109</b>	<b>76</b>	<b>10</b>
Montgomery County	Holy Cross Hospital of Silver Spring	59	35	24	8
	MedStar Montgomery General Hospital	41	32	9	3
	Shady Grove Adventist Emergency Center/Germantown	21	9	12	2
	Shady Grove Adventist Hospital	64	31	33	0
	Suburban Hospital	43	30	13	3
	Washington Adventist Hospital	26	26	0	0
	<b>MONTGOMERY COUNTY TOTAL</b>	<b>254</b>	<b>163</b>	<b>91</b>	<b>16</b>
Calvert County	Calvert Memorial Hospital	34	22	12	3
Charles County	Civista Medical Center	30	17	13	3
Prince George's County	Doctors Community Hospital	55	36	19	3
	Fort Washington Medical Center	18	7	11	1
	Laurel Regional Hospital	30	18	12	0
	Prince George's Hospital Center	44	21	23	1
	Bowie Health Center	21	21	0	2
	Southern Maryland Hospital Center	42	26	16	3
St. Mary's County	MedStar St. Mary's Hospital	32	20	12	6
	<b>SOUTHERN MARYLAND TOTAL</b>	<b>306</b>	<b>188</b>	<b>118</b>	<b>22</b>
Anne Arundel County	Anne Arundel Medical Center	67	61	6	12
	Baltimore Washington Medical Center	66	61	5	5
Baltimore City	Bon Secours Hospital	32	22	10	1
	Johns Hopkins Bayview Medical Center	40	22	18	6
	Johns Hopkins Hospital - Main ED	73	73	0	0
	Johns Hopkins Hospital - Pediatric ED	35	35	0	2
	Maryland General Hospital	29	12	17	0
	MedStar Good Samaritan Hospital	43	23	20	3
	MedStar Harbor Hospital	35	21	14	1
	MedStar Union Memorial Hospital	49	24	25	4
	Mercy Medical Center	45	39	6	1
	Sinai Hospital of Baltimore	61	46	15	4
	St. Agnes Hospital	59	47	12	15
	University of Maryland Hospital	79	79	0	5
Baltimore County	Greater Baltimore Medical Center	45	31	14	5
	MedStar Franklin Square Hospital	96	75	21	1
	Northwest Hospital Center	44	30	14	1
	St. Joseph Medical Center	39	33	6	4
Carroll County	Carroll Hospital Center	43	29	14	6
Harford County	Harford Memorial Hospital	29	29	0	0
	Upper Chesapeake Medical Center	52	49	3	3
Howard County	Howard County General Hospital	55	49	6	20
	<b>CENTRAL MARYLAND TOTAL</b>	<b>1,116</b>	<b>890</b>	<b>226</b>	<b>99</b>
Cecil County	Union Hospital of Cecil County	32	18	14	2
Dorchester County	Dorchester General Hospital	18	18	0	0
Kent County	Chester River Hospital Center	11	10	1	1
Queen Anne's County	Queen Anne's Emergency Center	14	14	0	1
Somerset County	Edward W. McCready Memorial Hospital	8	6	2	0
Talbot County	Memorial Hospital at Easton	34	32	2	2
Wicomico County	Peninsula Regional Medical Center	51	34	17	0
Worcester County	Atlantic General Hospital	30	7	23	5
	<b>EASTERN SHORE TOTAL</b>	<b>198</b>	<b>139</b>	<b>59</b>	<b>11</b>
	<b>MARYLAND STATE TOTAL</b>	<b>2,059</b>	<b>1,489</b>	<b>570</b>	<b>158</b>

Source: Maryland Health Care Commission

\*Non-treatment spaces in Emergency Departments include decontamination, observation/holding, and triage spaces in which treatment is not provided.



**Chart 9. Change in Number of Emergency Treatment Spaces by Type of Space:  
Maryland, 2005 - 2012**



Source: Maryland Health Care Commission

## **Hospital Surgical Services Capacity**

Table 18 displays the inventory of sterile operating rooms, by room type, excluding dedicated cesarean section rooms. Table 19 profiles the inventory of dedicated cesarean section operating rooms and procedure rooms. Procedure rooms are rooms used for endoscopy, cystoscopy, or other minor procedures and many are not sterile rooms, and thus, are only appropriately used for “closed” procedures that do not involve surgical incisions.

**Table 18. Surgical Services Capacity by Hospital and Room Use:  
Maryland Hospitals, June 1, 2012**

<b>Hospital</b>	<b>Inpatient General Purpose</b>	<b>Outpatient General Purpose</b>	<b>Mixed Use General Purpose</b>	<b>Inpatient Special Purpose</b>	<b>Outpatient Special Purpose</b>	<b>Mixed Use Special Purpose</b>	<b>Other Operating Rooms</b>	<b>Total Operating Rooms</b>
Anne Arundel Medical Center	0	0	26	0	0	0	0	26
Atlantic General Hospital	0	0	4	0	0	0	0	4
Baltimore Washington Medical Center	0	0	16	0	0	0	0	16
Bon Secours Hospital	0	0	5	0	0	0	0	5
Calvert Memorial Hospital	0	0	6	0	0	0	0	6
Carroll Hospital Center	0	0	10	0	0	0	0	10
Chester River Hospital Center	0	0	3	0	0	0	0	3
Civista Medical Center	0	0	4	0	0	0	0	4
Doctors Community Hospital	0	4	7	0	0	0	0	11
Dorchester General Hospital	0	0	4	0	0	0	0	4
Edward W. McCready Memorial Hospital	0	0	2	0	0	0	0	2
Fort Washington Medical Center	0	0	3	0	0	0	0	3
Frederick Memorial Hospital	0	0	11	0	0	0	0	11
Garrett County Memorial Hospital	0	0	3	0	0	0	0	3
Greater Baltimore Medical Center	0	0	30	0	0	0	0	30
Harford Memorial Hospital	0	0	4	0	0	0	0	4
Holy Cross Hospital of Silver Spring	0	0	14	0	0	0	0	14
Howard County General Hospital	0	0	13	0	0	0	0	13
James Lawrence Kernan Hospital	0	0	6	0	0	0	0	6
Johns Hopkins Bayview Medical Center	0	0	14	0	0	0	0	14
Laurel Regional Hospital	0	0	6	0	0	0	1	7
Maryland General Hospital	0	0	10	0	0	0	0	10
MedStar Franklin Square Hospital	0	0	15	0	0	1	0	16
MedStar Good Samaritan Hospital of Maryland	0	0	10	0	0	1	0	11
MedStar Harbor Hospital	0	0	9	0	0	0	0	9
MedStar Montgomery General Hospital	0	0	5	1	0	0	0	6
MedStar St. Mary's Hospital	0	0	5	0	0	0	0	5
MedStar Union Memorial Hospital	0	0	21	0	0	0	0	21
Memorial Hospital at Easton	0	0	6	0	0	0	0	6
Mercy Medical Center	0	0	19	0	0	0	3	22
Meritus Medical Center	0	0	11	0	0	0	0	11
Northwest Hospital Center	0	0	9	0	0	0	0	9
Peninsula Regional Medical Center	0	0	10	0	0	3	0	13
Prince George's Hospital Center	1	0	8	0	0	0	0	9
Shady Grove Adventist Hospital	0	0	16	2	0	0	0	18
Sinai Hospital of Baltimore	1	4	12	2	0	6	0	25
Southern Maryland Hospital Center	0	5	5	0	0	0	0	10
St. Agnes Hospital	0	0	19	0	0	0	0	19
St. Joseph Medical Center	0	0	15	0	0	4	0	19
Suburban Hospital	0	0	12	2	1	0	0	15
The Johns Hopkins Hospital	0	8	46	0	6	0	0	60
Union Hospital of Cecil County	0	0	4	0	0	2	0	6
University of Maryland Hospital	8	0	18	0	0	9	0	35
Upper Chesapeake Medical Center	0	0	11	0	0	0	0	11
Washington Adventist Hospital	0	0	11	0	0	0	0	11
Western Maryland Regional Medical Center	0	0	14	0	0	0	0	14
<b>TOTAL</b>	<b>10</b>	<b>21</b>	<b>512</b>	<b>7</b>	<b>7</b>	<b>26</b>	<b>4</b>	<b>587</b>

Source: Maryland Health Care Commission

**Table 19. Dedicated Cesarean Section Operating Rooms and Procedure Rooms by Hospital:  
Maryland Hospitals, June 1, 2012**

Jurisdiction/Region	Hospital	Dedicated Cesarean Section OR's		Procedure Rooms*	
		Inside Sterile Area	Outside Sterile Area	Inside Sterile Area	Outside Sterile Area
Allegany County	Western Maryland Regional Medical Center	2	0	0	8
Frederick County	Frederick Memorial Hospital	2	0	1	3
Garrett County	Garrett County Memorial Hospital	0	0	0	1
Washington County	Meritus Medical Center	2	0	1	2
<b>WESTERN MARYLAND TOTAL</b>		<b>6</b>	<b>0</b>	<b>2</b>	<b>14</b>
Montgomery County	Holy Cross Hospital of Silver Spring	4	0	2	9
	MedStar Montgomery General Hospital	2	0	1	2
	Shady Grove Adventist Hospital	3	0	3	0
	Suburban Hospital	0	0	1	3
	Washington Adventist Hospital	0	2	2	0
<b>MONTGOMERY COUNTY TOTAL</b>		<b>9</b>	<b>2</b>	<b>9</b>	<b>14</b>
Calvert County	Calvert Memorial Hospital	1	0	1	7
Charles County	Civista Medical Center	0	1	2	1
Prince George's County	Doctors Community Hospital	0	0	1	5
	Fort Washington Medical Center	0	0	1	1
	Laurel Regional Hospital	1	0	1	2
	Prince George's Hospital Center	2	0	1	3
	Southern Maryland Hospital Center	2	0	2	2
	<i>Total: Prince George's County</i>	<i>6</i>	<i>1</i>	<i>9</i>	<i>21</i>
St. Mary's County	MedStar St. Mary's Hospital	1	0	0	2
<b>SOUTHERN MARYLAND TOTAL</b>		<b>7</b>	<b>1</b>	<b>9</b>	<b>23</b>
Anne Arundel County	Anne Arundel Medical Center	3	0	0	4
	Baltimore Washington Medical Center	2	0	2	5
	<i>Total: Anne Arundel County</i>	<i>5</i>	<i>0</i>	<i>2</i>	<i>9</i>
Baltimore City	Bon Secours Hospital	0	0	1	3
	James Lawrence Kernan Hospital	0	0	0	1
	Johns Hopkins Bayview Medical Center	2	0	0	7
	Maryland General Hospital	1	0	0	8
	MedStar Good Samaritan Hospital of Maryland	0	0	0	5
	MedStar Harbor Hospital	1	0	4	0
	MedStar Union Memorial Hospital	0	0	5	0
	Mercy Medical Center	2	0	8	0
	Sinai Hospital of Baltimore	2	0	5	1
	St. Agnes Hospital	2	0	0	1
	The Johns Hopkins Hospital	3	0	0	23
	University of Maryland Hospital	3	0	4	8
	<i>Total: Baltimore City</i>	<i>16</i>	<i>0</i>	<i>27</i>	<i>57</i>
Baltimore County	Greater Baltimore Medical Center	3	0	3	10
	MedStar Franklin Square Hospital	3	0	4	0
	Northwest Hospital Center	0	0	1	2
	St. Joseph Medical Center	2	0	1	5
	<i>Total: Baltimore County</i>	<i>8</i>	<i>0</i>	<i>9</i>	<i>17</i>
Carroll County	Carroll Hospital Center	2	0	0	3
Harford County	Harford Memorial Hospital	0	0	2	7
	Upper Chesapeake Medical Center	2	0	2	0
	<i>Total: Harford County</i>	<i>2</i>	<i>0</i>	<i>4</i>	<i>7</i>
Howard County	Howard County General Hospital	2	0	1	3
<b>CENTRAL MARYLAND TOTAL</b>		<b>35</b>	<b>0</b>	<b>43</b>	<b>96</b>
Cecil County	Union Hospital of Cecil County	1	0	4	2
Dorchester County	Dorchester General Hospital	0	0	0	2
Kent County	Chester River Hospital Center**	0	0	1	0
Somerset County	Edward W. McCready Memorial Hospital	0	0	0	0
Talbot County	Memorial Hospital at Easton	1	0	0	1
Wicomico County	Peninsula Regional Medical Center	2	0	2	1
Worcester County	Atlantic General Hospital	0	0	0	3
<b>EASTERN SHORE TOTAL</b>		<b>4</b>	<b>0</b>	<b>7</b>	<b>9</b>
<b>MARYLAND TOTAL</b>		<b>61</b>	<b>3</b>	<b>70</b>	<b>156</b>

Source: Maryland Health Care Commission

\*Procedure Rooms include dedicated cystoscopy and endoscopy rooms and other procedure rooms

\*\*Chester River Hospital Center's Obstetric services closed effective March 31, 2012

Table 20 shows the trend in surgical services capacity at Maryland hospitals for the three-year period June 1, 2010 through June 1, 2012.

**Table 20. Trends in Number of Surgical Rooms:  
Maryland Hospitals, 2010 - 2012**

Jurisdiction/ Region	Hospital	2010			2011			2012		
		Total Operating Rooms	Total Procedure Rooms	Total Cesarean Section OR's	Total Operating Rooms	Total Procedure Rooms	Total Cesarean Section OR's	Total Operating Rooms	Total Procedure Rooms	Total Cesarean Section OR's
Allegany County	Western Maryland Regional Medical Center	14	8	2	14	8	2	14	8	2
Frederick County	Frederick Memorial Hospital	11	4	2	11	4	2	11	4	2
Garrett County	Garrett County Memorial Hospital	3	1	0	3	1	0	3	1	0
Washington County	Meritus Medical Center	11	2	0	11	3	2	11	3	2
<b>WESTERN MARYLAND TOTAL</b>		<b>39</b>	<b>15</b>	<b>4</b>	<b>39</b>	<b>16</b>	<b>6</b>	<b>39</b>	<b>16</b>	<b>6</b>
Montgomery County	Holy Cross Hospital of Silver Spring	14	10	3	14	11	4	14	11	4
	MedStar Montgomery General Hospital	6	3	2	6	3	2	6	3	2
	Shady Grove Adventist Hospital	18	4	3	18	3	3	18	3	3
	Suburban Hospital	15	4	0	15	4	0	15	4	0
	Washington Adventist Hospital	10	4	2	10	4	2	11	2	2
<b>MONTGOMERY COUNTY TOTAL</b>		<b>63</b>	<b>25</b>	<b>10</b>	<b>63</b>	<b>25</b>	<b>11</b>	<b>64</b>	<b>23</b>	<b>11</b>
Calvert County	Calvert Memorial Hospital	7	6	1	6	8	1	6	8	1
Charles County	Civista Medical Center	4	3	1	4	3	1	4	3	1
Prince George's County	Doctors Community Hospital	11	6	0	11	5	0	11	6	0
	Fort Washington Medical Center	3	2	0	3	2	0	3	2	0
	Laurel Regional Hospital	7	3	1	7	3	1	7	3	1
	Prince George's Hospital Center	9	4	2	9	4	2	9	4	2
	Southern Maryland Hospital Center	10	5	2	10	5	2	10	4	2
St. Mary's County	MedStar St. Mary's Hospital	5	2	1	5	2	1	5	2	1
<b>SOUTHERN MARYLAND TOTAL</b>		<b>56</b>	<b>31</b>	<b>8</b>	<b>55</b>	<b>32</b>	<b>8</b>	<b>55</b>	<b>32</b>	<b>8</b>
Anne Arundel County	Anne Arundel Medical Center	18	4	3	26	4	3	26	4	3
	Baltimore Washington Medical Center	13	7	2	16	7	2	16	7	2
Baltimore City	Bon Secours Hospital	5	4	0	5	4	0	5	4	0
	James Lawrence Kernan Hospital	6	1	0	6	1	0	6	1	0
	Johns Hopkins Bayview Medical Center	14	7	2	14	7	2	14	7	2
	Maryland General Hospital	10	8	1	10	8	1	10	8	1
	MedStar Good Samaritan Hospital	11	5	0	11	5	0	11	5	0
	MedStar Harbor Hospital	9	5	1	9	5	1	9	4	1
	MedStar Union Memorial Hospital	21	5	0	21	5	0	21	5	0
	Mercy Medical Center	19	7	2	22	8	2	22	8	2
	Sinai Hospital of Baltimore	21	7	2	21	7	2	25	6	2
	St. Agnes Hospital	19	1	2	19	1	2	19	1	2
	The Johns Hopkins Hospital	53	33	3	53	32	3	60	23	3
	University of Maryland Hospital	30	11	3	30	11	3	35	12	3
Baltimore County	Greater Baltimore Medical Center	27	11	3	32	13	3	30	13	3
	MedStar Franklin Square Hospital	16	4	3	16	4	3	16	4	3
	Northwest Hospital Center	9	3	0	9	3	0	9	3	0
	St. Joseph Medical Center	22	5	2	20	6	2	19	6	2
Carroll County	Carroll Hospital Center	10	3	2	10	3	2	10	3	2
Harford County	Harford Memorial Hospital	4	9	0	4	9	0	4	9	0
	Upper Chesapeake Medical Center	11	2	0	11	2	0	11	2	2
Howard County	Howard County General Hospital	13	4	2	13	4	2	13	4	2
<b>CENTRAL MARYLAND TOTAL</b>		<b>361</b>	<b>146</b>	<b>33</b>	<b>378</b>	<b>149</b>	<b>33</b>	<b>391</b>	<b>139</b>	<b>35</b>
Cecil County	Union Hospital of Cecil County	6	5	1	6	6	1	6	6	1
Dorchester County	Dorchester General Hospital	4	2	0	4	2	0	4	2	0
Kent County	Chester River Hospital Center**	3	1	1	3	1	1	3	1	0
Somerset County	Edward W. McCready Memorial Hospital	2	0	0	2	0	0	2	0	0
Talbot County	Memorial Hospital at Easton	6	1	1	6	1	1	6	1	1
Wicomico County	Peninsula Regional Medical Center	13	3	2	13	3	2	13	3	2
Worcester County	Atlantic General Hospital	4	3	0	4	3	0	4	3	0
<b>EASTERN SHORE TOTAL</b>		<b>38</b>	<b>15</b>	<b>5</b>	<b>38</b>	<b>16</b>	<b>5</b>	<b>38</b>	<b>16</b>	<b>4</b>
<b>MARYLAND TOTAL</b>		<b>557</b>	<b>232</b>	<b>60</b>	<b>573</b>	<b>238</b>	<b>63</b>	<b>587</b>	<b>226</b>	<b>64</b>

Source: Maryland Health Care Commission

\*Procedure Rooms include dedicated cystoscopy and endoscopy rooms and other procedure rooms.

## **Cardiac Catheterization Laboratory Services**

A cardiac catheterization laboratory is an examination room in a hospital or clinic with diagnostic radiological imaging equipment, where cardiac catheterization procedures are performed. In these procedures, a catheter is inserted, through a guidewire, into a large artery. Diagnostic catheterization, called angiography, is performed to confirm heart disease, to measure the severity of disease, and to help determine appropriate treatment for coronary disease. In some cardiac catheterization laboratories, therapeutic catheterizations are also performed, using percutaneous coronary intervention (PCI), to treat blockage of coronary arteries. A couple of decades ago, catheterization labs were built mainly at tertiary care facilities, but more recently they have increasingly become instrumental features of community hospital cardiac care programs.

Beginning in 2012, as part of the acute care hospital inventory, MHCC requested Maryland acute care hospitals to report the number of cardiac catheterization laboratories in their hospital. Hospitals were also requested to report plans to increase the number of cardiac catheterization laboratories within the next twelve months. Table 21 shows the number of cardiac catheterization labs located in Maryland acute care hospitals and whether they provide diagnostic cardiac catheterization only and/or diagnostic and therapeutic cardiac catheterization.

In 2012, there were a total of 88 cardiac catheterization laboratories located in 38 of the 46 Maryland acute care hospitals; eight hospitals did not have a cardiac catheterization laboratory. More than half of the hospital cardiac catheterization laboratories (47) are in the Central Maryland region. Montgomery County's five acute care hospitals include 15 cardiac catheterization laboratories. The regions with the fewest cardiac catheterization laboratories are the Eastern Shore and Western Maryland with 8 labs each and Southern Maryland with 9 labs.

Three of the 38 hospitals with cardiac catheterization laboratories responded that they plan to add one (1) cardiac catheterization laboratory each to their hospital's inventory. The three hospitals are Southern Maryland Hospital Center, The Johns Hopkins Hospital, and Upper Chesapeake Medical Center. Calvert Memorial Hospital, with one cardiac catheterization laboratory, plans to conduct a study to determine the feasibility of adding an additional room(s). Garrett County Memorial Hospital, which does not currently have any cardiac catheterization laboratories, plans to conduct a market analysis to determine the feasibility of adding this service to their hospital.

**Table 21. Cardiac Catheterization Laboratories, Maryland Acute Care Hospitals**  
**June 1, 2012**

<b>Jurisdiction/ Region</b>	<b>Hospital Name</b>	<b>Cardiac Catheterization Laboratories Available</b>	<b>Disgnostic and Therapeutic Cardiac Catheterization</b>	<b>Diagnostic Catheterization Only</b>
Allegany County	Western Maryland Regional Medical Center	3	√	
Frederick County	Frederick Memorial Hospital	2	√	
Washington County	Meritus Medical Center	4	√	
<b>Western Maryland Total</b>		<b>9</b>	<b>3</b>	<b>0</b>
Montgomery County	Holy Cross Hospital	3	√	
	MedStar Montgomery Medical Center	1		√
	Shady Grove Adventist Hospital	3	√	
	Suburban Hospital	3	√	
	Washington Adventist Hospital	5	√	
<b>Montgomery County Total</b>		<b>15</b>	<b>4</b>	<b>1</b>
Calvert County	Calvert Memorial Hospital	1		√
Charles County	Civista Medical Center	1		√
Prince George's County	Doctors Community Hospital	1		√
	Laurel Regional Hospital	1		√
	Prince George's Hospital Center	2	√	
	Southern Maryland Hospital Center	2	√	
<b>Southern Maryland Total</b>		<b>8</b>	<b>2</b>	<b>4</b>
Anne Arundel County	Anne Arundel Medical Center	2	√	
	Baltimore Washington Medical Center	3	√	
Baltimore City	Bon Secours Hospital	1		√
	Johns Hopkins Bayview Medical Center	2	√	
	Maryland General Hospital	1		√
	MedStar Good Samaritan Hospital	1		√
	MedStar Harbor Hospital	1		√
	MedStar Union Memorial Hospital	6	√	
	Mercy Medical Center	1		√
	Sinai Hospital of Baltimore	5	√	
	St. Agnes Hospital	2	√	
	The Johns Hopkins Hospital	4	√	
	University of Maryland Medical Center	5	√	
Baltimore County	Greater Baltimore Medical Center	1		√
	MedStar Franklin Square Hospital	1	√	
	Northwest Hospital Center	1		√
	St. Joseph Medical Center	5	√	
Carroll County	Carroll Hospital Center	2	√	
Harford County	Upper Chesapeake Medical Center	1	√	
Howard County	Howard County General Hospital	2	√	
<b>Central Maryland Total</b>		<b>47</b>	<b>13</b>	<b>7</b>
Cecil County	Union Hospital of Cecil County	1		√
Kent County	Chester River Hospital Center	1		√
Talbot County	Memorial Hospital at Easton	1		√
Wicomico County	Peninsula Regional Medical Center	6	√	
<b>Eastern Shore Total</b>		<b>9</b>	<b>1</b>	<b>3</b>
<b>Maryland State Total</b>		<b>88</b>	<b>23</b>	<b>15</b>

Source: Maryland Health Care Commission

## Obstetric and Perinatal Services Capacity

Thirty-three of the 46 acute care hospitals in Maryland provide obstetric and perinatal services.<sup>4</sup> Table 22 outlines the distribution of obstetric service capacity by region, county and hospital.

**Table 22. Obstetric Service Capacity, Maryland Hospitals, June 1, 2012**

Jurisdiction/ Region	Hospital	Labor Beds	Delivery Beds	Recovery Beds	Ante Partum	Post Partum Beds	Labor- Delivery Beds	Labor- Delivery- Recovery (LDR) Beds	Labor-Delivery- Recovery- PostPartum (LDRP) Beds	Cesarean Section ORs
Allegany County	Western Maryland Regional Medical Center	0	0	2	2	14	0	4	0	2
Frederick County	Frederick Memorial Hospital	0	0	2	0	27	0	9	0	2
Garrett County	Garrett County Memorial Hospital	2	0	0	2	2	0	1	3	0
Washington County	Meritus Medical Center	0	0	0	6	6	0	0	18	2
<b>WESTERN MARYLAND TOTAL</b>		<b>2</b>	<b>0</b>	<b>4</b>	<b>10</b>	<b>49</b>	<b>0</b>	<b>14</b>	<b>21</b>	<b>6</b>
Montgomery County	Holy Cross Hospital of Silver Spring	0	0	0	20	68	0	24	0	4
	MedStar Montgomery General Hospital	2	0	2	2	11	0	5	0	2
	Shady Grove Adventist Hospital	0	0	6	8	48	0	16	0	3
	Washington Adventist Hospital	0	0	0	0	25	0	10	0	2
<b>MONTGOMERY COUNTY TOTAL</b>		<b>2</b>	<b>0</b>	<b>8</b>	<b>30</b>	<b>152</b>	<b>0</b>	<b>55</b>	<b>0</b>	<b>11</b>
Calvert County	Calvert Memorial Hospital	0	0	0	0	12	0	5	0	1
Charles County	Civista Medical Center	0	0	0	0	12	0	4	0	1
Prince George's County	Laurel Regional Hospital	0	0	0	0	10	0	4	0	1
	Prince George's Hospital Center	0	0	0	0	40	0	10	2	2
	Southern Maryland Hospital Center	0	0	4	0	30	0	8	0	2
	<i>Total: Prince George's County</i>	<i>0</i>	<i>0</i>	<i>4</i>	<i>0</i>	<i>104</i>	<i>0</i>	<i>31</i>	<i>2</i>	<i>7</i>
St. Mary's County	MedStar St. Mary's Hospital	0	0	0	0	12	1	5	0	1
<b>SOUTHERN MARYLAND TOTAL</b>		<b>0</b>	<b>0</b>	<b>4</b>	<b>0</b>	<b>116</b>	<b>1</b>	<b>36</b>	<b>2</b>	<b>8</b>
Anne Arundel County	Anne Arundel Medical Center	0	0	5	4	36	0	24	0	3
	Baltimore Washington Medical Center	0	0	4	0	18	0	4	0	2
	<i>Total: Anne Arundel County</i>	<i>0</i>	<i>0</i>	<i>9</i>	<i>4</i>	<i>54</i>	<i>0</i>	<i>28</i>	<i>0</i>	<i>5</i>
Baltimore City	Johns Hopkins Bayview Medical Center	0	0	2	0	17	0	6	0	2
	Maryland General Hospital	0	0	4	0	8	0	0	9	1
	MedStar Harbor Hospital	0	0	0	0	8	0	0	16	1
	Mercy Medical Center	0	0	3	3	29	0	13	0	2
	St. Agnes Hospital	0	0	0	0	0	0	12	0	2
	Sinai Hospital of Baltimore	0	0	3	0	23	0	7	0	2
	The Johns Hopkins Hospital	0	0	3	0	35	0	10	0	3
	University of Maryland Hospital	5	0	3	8	14	0	7	0	3
	<i>Total: Baltimore City</i>	<i>5</i>	<i>0</i>	<i>18</i>	<i>11</i>	<i>134</i>	<i>0</i>	<i>55</i>	<i>25</i>	<i>16</i>
Baltimore County	Greater Baltimore Medical Center	0	0	0	12	48	0	17	0	3
	MedStar Franklin Square Hospital	0	0	5	0	17	0	0	20	3
	St. Joseph Medical Center	0	0	0	9	20	0	9	0	2
	<i>Total: Baltimore County</i>	<i>0</i>	<i>0</i>	<i>5</i>	<i>21</i>	<i>85</i>	<i>0</i>	<i>26</i>	<i>20</i>	<i>8</i>
Carroll County	Carroll Hospital Center	0	0	2	0	5	0	0	15	2
Harford County	Upper Chesapeake Medical Center	0	0	2	0	9	0	0	14	0
Howard County	Howard County General Hospital	0	0	2	3	34	0	12	0	2
<b>CENTRAL MARYLAND TOTAL</b>		<b>5</b>	<b>0</b>	<b>38</b>	<b>39</b>	<b>321</b>	<b>0</b>	<b>121</b>	<b>74</b>	<b>33</b>
Cecil County	Union Hospital of Cecil County	0	0	0	0	8	0	0	7	1
Kent County	Chester River Hospital Center**	0	0	0	0	0	0	0	0	0
Talbot County	Memorial Hospital at Easton	0	0	3	0	0	0	6	10	1
Wicomico County	Peninsula Regional Medical Center	0	0	0	0	20	0	13	0	2
<b>EASTERN SHORE TOTAL</b>		<b>0</b>	<b>0</b>	<b>3</b>	<b>0</b>	<b>28</b>	<b>0</b>	<b>19</b>	<b>17</b>	<b>4</b>
<b>MARYLAND TOTAL</b>		<b>9</b>	<b>0</b>	<b>57</b>	<b>79</b>	<b>666</b>	<b>1</b>	<b>245</b>	<b>114</b>	<b>62</b>

Source: Maryland Health Care Commission

\*\*Chester River closed its obstetrics service effective March 31, 2012.

<sup>4</sup> Chester River Hospital Center closed its obstetrics service effective March 31, 2012

Newborn nursery bassinets at the 33 hospitals providing obstetric services are shown below in Table 23.

**Table 23. Newborn Nursery Bassinets:  
Maryland Hospitals, FY 2013**

<b>Jurisdiction/ Region</b>	<b>Hospital</b>	<b>Newborn Nursery</b>	<b>Premature Nursery</b>	<b>Neonatal Intensive Care</b>	<b>Total Bassinets</b>
Allegany County	Western Maryland Regional Medical Center	20	0	0	20
Frederick County	Frederick Memorial Hospital	37	0	6	43
Garrett County	Garrett County Memorial Hospital	12	0	0	12
Washington County	Meritus Medical Center	41	0	0	41
<b>WESTERN MARYLAND TOTAL</b>		<b>110</b>	<b>0</b>	<b>6</b>	<b>116</b>
Montgomery County	Holy Cross Hospital of Silver Spring	113	0	46	159
	MedStar Montgomery General Hospital	18	0	0	18
	Shady Grove Adventist Hospital	48	0	31	79
	Washington Adventist Hospital	36	0	0	36
<b>MONTGOMERY COUNTY TOTAL</b>		<b>215</b>	<b>0</b>	<b>77</b>	<b>292</b>
Calvert County	Calvert Memorial Hospital	12	0	0	12
Charles County	Civista Medical Center, Inc.	15	0	0	15
Prince George's County	Laurel Regional Hospital	9	0	0	9
	Prince George's Hospital Center	40	0	20	60
	Southern Maryland Hospital Center	16	8	0	24
	<i>Total: Prince George's County</i>	<i>92</i>	<i>8</i>	<i>20</i>	<i>120</i>
St. Mary's County	MedStar St. Mary's Hospital	16	0	0	16
<b>SOUTHERN MARYLAND TOTAL</b>		<b>108</b>	<b>8</b>	<b>20</b>	<b>136</b>
Anne Arundel County	Anne Arundel Medical Center	40	0	30	70
	Baltimore Washington Medical Center	15	0	0	15
	<i>Total Anne Arundel County</i>	<i>55</i>	<i>0</i>	<i>30</i>	<i>85</i>
Baltimore City	Johns Hopkins Bayview Medical Center	20	0	25	45
	Maryland General Hospital	17	0	0	17
	MedStar Harbor Hospital	44	0	0	44
	Mercy Medical Center, Inc.	40	0	26	66
	Sinai Hospital of Baltimore	35	0	21	56
	St. Agnes Healthcare	36	0	24	60
	The Johns Hopkins Hospital	25	0	45	70
	University of Maryland Medical Center	24	0	40	64
	<i>Total: Baltimore City</i>	<i>241</i>	<i>0</i>	<i>181</i>	<i>422</i>
Baltimore County	Greater Baltimore Medical Center, Inc.	60	0	30	90
	MedStar Franklin Square Hospital Center	35	0	22	57
	St. Joseph Medical Center	20	0	20	40
	<i>Total: Baltimore County</i>	<i>115</i>	<i>0</i>	<i>72</i>	<i>187</i>
Carroll County	Carroll Hospital Center	25	0	0	25
Harford County	Upper Chesapeake Medical Center	12	0	0	12
Howard County	Howard County General Hospital	30	0	18	48
<b>CENTRAL MARYLAND TOTAL</b>		<b>478</b>	<b>0</b>	<b>301</b>	<b>779</b>
Cecil County	Union Hospital of Cecil County	12	0	0	12
Kent County	Chester River Hospital Center*	0	0	0	0
Talbot County	Memorial Hospital at Easton Maryland	18	0	0	18
Wicomico County	Peninsula Regional Medical Center	18	0	10	28
<b>EASTERN SHORE TOTAL</b>		<b>48</b>	<b>0</b>	<b>10</b>	<b>58</b>
<b>MARYLAND TOTAL</b>		<b>959</b>	<b>8</b>	<b>414</b>	<b>1,381</b>

Source: Maryland Health Care Commission

\*Chester River Hospital Center closed its obstetrics service effective March 31, 2012

### **Special Hospital Services, Comprehensive Care Facilities in the Hospital Setting, and Hospital-Based Psychiatric Inpatient Care**

Special hospitals are facilities that have an organized medical staff of physicians and that include inpatient beds with medical services. The medical services include physician services and continuous registered professional nursing services, for not less than 24 hours every day, to provide diagnosis and treatment for patients who have specific medical conditions. In Maryland, special hospitals provide specialized rehabilitation, chronic care, pediatric and psychiatric services. Special hospital beds may be located on the campus of an acute general hospital. In these cases, they are separately licensed from acute care beds. Special hospital beds are not included in the annual licensure process for acute care beds located in acute care general hospitals. Thus, there should be no difference between licensed bed inventories and physical bed capacity in the case of such beds.

### **Special Hospital Medical Rehabilitation Services**

Acute inpatient rehabilitation is defined, at COMAR 10.24.09, as interdisciplinary care provided to persons with disabilities who are at high risk of potential medical instability, have a potential for needing skilled nursing care of a high medical acuity, and require a mix of services, service intensity levels, and settings of the following type:

1. Regular, direct individual contact by a physiatrist or physician of equivalent training and/or experience in rehabilitation who serves as their lead provider;
2. Daily rehabilitation nursing for multiple and/or complex needs;
3. A minimum of three hours of physical or occupational therapy per day, at least five days per week, in addition to therapies or services from a psychologist, a social worker, a speech-language pathologist, and a therapeutic recreation specialist, as determined by the individual's needs; or
4. Based on their individual needs, other services provided in a health care facility that is licensed as a hospital.

There are five (5) special hospitals licensed that provide medical rehabilitation services in Maryland and ten (10) Maryland acute care hospitals have special hospital units that provide medical rehabilitation services. Table 24 profiles the types of rehabilitation programs offered at these facilities, the number of licensed beds, and the number of licensed beds that are regularly staffed. Staffed beds are defined as the number of beds regularly maintained (set up and staffed for use) for inpatients. In this table, adult patients are defined as 18 years of age and older and pediatric patients are patients under the age of 18. The program listings are medical rehabilitation services that are accredited by the Commission on Accreditation of Rehabilitation Facilities (CARF). CARF is an independent nonprofit accrediting body of human service providers in the areas of aging services, behavioral health, child and youth services, durable

medical equipment, prosthetics, orthotics and orthotic supplies, employment and community services, medical rehabilitation, and opioid treatment programs. CARF accreditation is required by the State of Maryland for licensure of rehabilitation facilities.

**Table 24. Inpatient Medical Rehabilitation Services by Region and Jurisdiction, June 1, 2012**

Jurisdiction/ Region	Hospital	CARF Accredited Inpatient Medical Rehabilitation Programs Offered										Licensed Beds	Staffed Beds
		Comprehensive		Brain Injury		Spinal Cord		Stroke		Amputation			
		Adult	Pediatric	Adult	Pediatric	Adult	Pediatric	Adult	Pediatric	Adult	Pediatric		
Allegany County	Western Maryland Regional Medical Center	√						√				13	13
Washington County	Meritus Medical Center	√	√									20	20
Western Maryland Total												33	33
Montgomery County	Adventist Rehabilitation Hospital of Maryland	√		√		√		√		√		77	77
Montgomery County Total												77	77
Prince George's County	Laurel Regional Hospital	√						√				28	27
Southern Maryland Total												28	27
	James Lawrence Kernan Hospital	√	√	√	√	√	√	√				108	108
	Johns Hopkins Bayview Medical Center	√						√				9	9
	Kennedy Krieger Children's Hospital		√		√							31	31
	Levindale Hebrew Geriatric Center & Hospital	√										20	20
	MedStar Good Samaritan Hospital	√						√				51	51
	MedStar Union Memorial Hospital	√										18	7
	Mount Washington Pediatric Hospital		√									46	26
	Sinai Hospital of Baltimore	√		√								57	46
	The Johns Hopkins Hospital	√										14	14
Central Maryland Total												354	312
Talbot County	Memorial Hospital at Easton	√										20	20
Wicomico County	HealthSouth Chesapeake Rehabilitation Center	√										54	54
Eastern Shore Total												74	74
MARYLAND TOTAL												566	523

Source: Maryland Health Care Commission and Commission on Accreditation of Rehabilitation Facilities (CARF) 9/19/2012.

Notes: 1. Licensed Beds for Adventist Rehabilitation Hospital of Maryland at Takoma Park are included in Adventist Rehabilitation of Maryland. 2. James Lawrence Kernan Hospital. Staffed Beds include 16 dually licensed rehabilitation/chronic beds. 3. The Inpatient Rehabilitation Unit at Maryland General Hospital closed and is no longer CARF accredited effective 6/24/2011.

## **Other Special Hospital Services (non-psychiatric)**

### **Pediatric**

Facilities with beds licensed as Special Hospital – Pediatric are used to provide specialized inpatient services to patients less than 18 years of age. There are two special hospitals in Maryland dedicated to providing specialized pediatric services. Both hospitals provide rehabilitation and other special hospital services and are located in Baltimore City. (See Table 24).

### **Chronic Care**

Facilities with beds licensed as Special Hospital - Chronic provide continuous and intensive medical, nursing, and ancillary services to medically-complex patients with severe illness who require close professional monitoring and observation and frequent medical interventions, either after an acute hospital phase of care or as a result of acute exacerbations of illness while residing in other settings, such as the patient's home or a nursing home (comprehensive care facility).

Previously four special hospitals – chronic were licensed in Maryland. University Specialty Hospital with 180 chronic beds closed 3/31/2012; effective July 11, 2012; 92 chronic beds were transferred to Acute Care Hospitals and licensed as special hospital chronic beds. Maryland General Hospital is licensed for 80 special hospital – chronic beds and 12 chronic beds were

transferred to James Lawrence Kernan Hospital. The remaining 88 chronic beds are temporarily delicensed (see Table 26).

The three remaining special hospital facilities in Maryland currently licensed to provide special hospital-chronic care have a total of 226 licensed beds, of which 150 are reported to be regularly staffed. The three special hospitals providing chronic care range in size from 60 to 100 licensed beds. One chronic hospital is private, and two are state-operated. The private chronic special hospital is located in the Central Maryland region. The two state operated chronic hospitals are each located in the less densely populated Health Planning Regions of Western Maryland and the Eastern Shore. Four acute care hospitals, three located in Baltimore City and one in Prince George's County, the Southern Maryland region, provide chronic special hospital services. The three Central Maryland Hospitals have a total of 192 licensed chronic care beds located on their campuses, which are staffed to licensed capacity. The acute care hospital in Southern Maryland is licensed for 46 chronic care beds and also is staffed to licensed capacity. Chronic beds located on an acute care hospital campus are licensed separately and are not part of the annual acute care bed licensure process. Tables 25 and 26 show the licensed capacity of individual hospitals and the number of beds regularly staffed, by jurisdiction and region.

**Table 25. Licensed Special Hospitals and their Special Hospital (Non-Psychiatric and Non-Rehabilitation) Beds: Maryland, June 1, 2012**

Jurisdiction/ Region	Specialty Hospitals	Pediatric		Chronic	
		Licensed	Staffed	Licensed	Staffed
Washington County	Western Maryland Center*	-	-	60	30
<b>Western Maryland Total</b>		<b>-</b>	<b>-</b>	<b>60</b>	<b>30</b>
Prince George's County	Spellman Specialty Hospital**	-	-	-	-
Baltimore City	Kennedy Krieger Children's	39	39	-	-
	Levindale Hebrew Geriatric	-	-	100	100
	Mount Washington Pediatric	56	40	-	-
	University Specialty Hospital	-	-	-	-
<b>Central Maryland Total</b>		<b>95</b>	<b>79</b>	<b>100</b>	<b>100</b>
Wicomico County	Deer's Head Center*	-	-	66	20
<b>Eastern Shore Total</b>		<b>-</b>	<b>-</b>	<b>66</b>	<b>20</b>
<b>Maryland Total</b>		<b>95</b>	<b>79</b>	<b>226</b>	<b>150</b>

Source: Maryland Health Care Commission, Office of Health Care Quality, DHMH, Hospital Management System

\*Deer's Head Center, although licensed for 66 Chronic beds is currently budgeted for 20 beds. Western Maryland is licensed for 60 Chronic beds but is currently budgeted for 23 beds. \*\*Spellman Specialty Hospital closed June 30, 2011. Upon closure, the license for 46 chronic care beds in Prince George's County were transferred to Laurel Regional Hospital.

University Specialty Hospital (180 chronic beds) closed 3/31/2012; Effective July 11, 2012; 80 chronic beds were transferred to Maryland General Hospital and 12 chronic beds were transferred to James Lawrence Kernan Hospital. The remaining 88 chronic beds are temporarily delicensed.

Licensing and staffing for the transferred beds is reported in Table 21., Licensed Special Hospital Beds: Located on Acute Care Hospital Campuses.

**Table 26. Licensed Special Hospital (Non-Psychiatric and Non-Rehabilitation) Beds:  
Located on Acute Care Hospital Campuses, Maryland , June 1, 2012**

Jurisdiction/ Region	Acute Care Hospitals	Chronic		Dual Rehabilitation/ Chronic	
		Licensed	Staffed	Licensed	Staffed
Baltimore City/Central Maryland	James Lawrence Kernan Hospital*	36	36	16	16
Baltimore City/Central Maryland	Johns Hopkins Bayview Medical Center	76	76	-	-
Baltimore City/Central Maryland	Maryland General Hospital	80	80	-	-
Prince George's/Southern Maryland	Laurel Regional Hospital	46	46	-	-
<b>Maryland State Total</b>		<b>238</b>	<b>238</b>	<b>16</b>	<b>16</b>

Source: Maryland Health Care Commission; Office of Health Care Quality. \*James Lawrence Kernan Hospital staffed chronic beds exceed licensed beds through use of dually licensed Rehabilitation/Chronic Care beds.

The 46 licensed Chronic Care Beds reported for Laurel Regional Hospital were previously located at Spellman Specialty Hospital which closed effective June 30, 2011. Effective July 11, 2012, a total of 92 chronic beds were transferred from University Specialty Hospital to Maryland General Hospital (80 beds) and James Lawrence Kernan Hospital (12 beds).

### **Comprehensive Care Facility Beds in the Hospital Setting**

Comprehensive care facilities (“CCFs”) are licensed in accordance with COMAR 10.07.02. These facilities admit patients suffering from disease or disabilities, or advanced age, requiring medical service and nursing service rendered by or under the supervision of a registered nurse. The vast bulk of CCF services are provided in Maryland through freestanding (non-hospital) CCFs, commonly known as nursing homes. Only 2.8% of the state’s total CCF beds are located in general or special hospital settings. However, this type of inpatient facility service is also offered by 9 acute care general hospitals (Table 27) and by three facilities that combine special hospital comprehensive care facility services (Table 28) with chronic care services (Table 25). CCF beds in general hospitals are primarily used to provide short-term rehabilitative services to Medicare patients. In contrast, most of the state’s CCF beds are used in providing longer-term chronic and custodial care.

**Table 27. Licensed Comprehensive Care Facility Beds at Acute Care Hospitals,  
Maryland, June 1, 2012**

<b>Jurisdiction/ Region</b>	<b>Hospital</b>	<b>Licensed Comprehensive Care Facility Beds</b>	<b>Staffed Beds</b>
Garrett County	Garrett County Memorial Hospital	10	10
<b><i>Western Maryland Total</i></b>		<b><i>10</i></b>	<b><i>10</i></b>
Calvert County	Calvert Memorial Hospital	18	14
Prince George's County	Southern Maryland Hospital Center	24	24
<b><i>Southern Maryland Total</i></b>		<b><i>42</i></b>	<b><i>38</i></b>
Baltimore City	Johns Hopkins Bayview Medical Center	80	54
	MedStar Good Samaritan Hospital	30	30
	Mercy Medical Center	29	29
Baltimore County	Greater Baltimore Medical Center	25	25
	Northwest Hospital Center	29	29
<b><i>Central Maryland Total</i></b>		<b><i>193</i></b>	<b><i>167</i></b>
Wicomico County	Peninsula Regional Medical Center	30	30
<b><i>Eastern Shore Total</i></b>		<b><i>30</i></b>	<b><i>30</i></b>
<b><i>Maryland Total - Acute Care Hospitals</i></b>		<b><i>275</i></b>	<b><i>245</i></b>

Source: Maryland Health Care Commission, Office of Health Care Quality

**Table 28. Licensed Comprehensive Care Facility Beds at Special Hospitals  
June 1, 2012**

<b>Jurisdiction/ Region</b>	<b>Hospital</b>	<b>Licensed Comprehensive Care Facility Beds</b>	<b>Staffed Beds</b>
Wicomico County/ Eastern Shore	Deer's Head Center	80	60
Baltimore City/ Central Maryland	Levindale Hebrew Geriatric Center & Hospital	172	172
Washington County/ Western Maryland	Western Maryland Center	60	23
<b><i>Maryland State Total</i></b>		<b><i>312</i></b>	<b><i>255</i></b>

Source: Maryland Health Care Commission, Office of Health Care Quality, DHMH, Hospital Management System

### **Psychiatric Hospital Facilities and Services**

In Maryland, two types of hospital-level inpatient psychiatric services are provided; acute psychiatric services and longer-term, continuing care. Most acute inpatient psychiatric care is provided within the acute care general hospital setting at 28 acute care general hospitals. These psychiatric beds are included in the annual “dynamic” licensure process for all acute care beds located in acute care general hospitals in which the licensed acute care bed inventory is based on recorded average daily census. Hospital-level psychiatric inpatient care outside of the acute care general hospital setting can be found in freestanding private hospitals or in state hospitals. The psychiatric beds in these two facility types are licensed as a category of “special hospital” beds under the State’s licensing statute. Freestanding private psychiatric hospitals

primarily provide acute psychiatric inpatient services. State psychiatric hospitals primarily provide long-term, continuing care psychiatric inpatient services.

Table 29 provides an overview of the acute psychiatric inpatient service bed capacity and program characteristics of general acute care hospitals. In general, services for children are provided to a patient population under the age of 13 years, adolescent services are provided to patients aged 13 to 17, and adult services are provided to patients aged 18 years and older.

**Table 29. Inpatient Acute Psychiatric Services Available at General Acute Care Hospitals: Maryland, FY 2013**

Jurisdiction/ Region		Designated FY 2013 Licensed	Acute Adult	Acute Child	Acute Adolescent	Acute Geriatric	Accept Involuntary Patients
Allegany County	Western Maryland Regional Medical Center*	20	√			√	√
	Frederick Memorial Hospital	21	√			√	√
	Meritus Medical Center*	18	√		√	√	√
<b>Western Maryland Total</b>		<b>59</b>					
Montgomery County	MedStar Montgomery General Hospital	25	√		√	√	No
	Suburban Hospital	24	√		√	√	No
	Washington Adventist Hospital	40	√			√	√
<b>Montgomery County Total</b>		<b>89</b>					
Calvert County	Calvert Memorial Hospital	11	√		√		√
Prince George's County	Laurel Regional Hospital	14	√			√	No
	Prince George's Hospital Center	28	√			√	√
	Southern Maryland Hospital Center	25	√			√	√
St. Mary's County	MedStar St. Mary's Hospital	12	√				√
<b>Southern Maryland Total</b>		<b>90</b>					
Anne Arundel County	Baltimore Washington Medical Center	14	√				√
Baltimore City	Bon Secours Hospital	32	√				√
	Johns Hopkins Bayview Medical Center	20	√				No
	Maryland General Hospital	28	√				√
	MedStar Union Memorial Hospital	26	√				√
	Sinai Hospital of Baltimore	24	√			√	√
	The Johns Hopkins Hospital	108	√	√			√
	University of Maryland Medical Center	56	√	√		√	√
Baltimore County	MedStar Franklin Square Hospital	24	√		√		√
	Northwest Hospital	14	√			√	√
	St. Joseph Hospital	19	√				No
Carroll County	Carroll Hospital Center	20	√		√		√
Harford County	Harford Memorial Hospital	27	√				√
Howard County	Howard County General Hospital	20	√				√
<b>Central Maryland Total</b>		<b>432</b>					
Cecil County	Union Hospital of Cecil County	7	√			√	√
Dorchester County	Dorchester General Hospital	16	√				√
Wicomico County	Peninsula Regional Medical Center	10	√				√
<b>Eastern Shore Total</b>		<b>33</b>					
<b>Maryland State Total</b>		<b>703</b>					

Source: Maryland Health Care Commission survey of psychiatric services capacity, June, 2012. \*Western Maryland Regional Medical Center replaces Braddock Hospital. Note: Western Maryland Regional Medical Center, Washington County Hospital, and Howard County General report that adolescents (defined as 16+) may be provided services in the same section as adults. Suburban combines adolescents (13+), adults and geriatric in a combined unit. Adult and Geriatric units are combined at Frederick Memorial, Laurel Regional, Prince George's Hospital, Sinai, Northwest, and St. Joseph's Hospital.

Tables 30 and 31 profile psychiatric inpatient service capacity and inpatient program characteristics at Special Hospitals – Psychiatric. Table 30 identifies the licensed bed capacity and the number of reported regularly staffed beds at Maryland's five freestanding private psychiatric hospitals. Table 31 identifies the number of licensed beds and "budgeted" beds, at Maryland's five state-operated psychiatric hospitals. The number of "budgeted" beds provides a more accurate reflection of the bed capacity that is typically set up and staffed at these facilities than the number of licensed beds.

**Table 30. Inpatient Services Available at Private Special Hospitals - Psychiatric:  
Maryland, June 1, 2012**

Hospital	Jurisdiction	Region	Licensed Capacity	Staffed Beds	Acute Adult	Acute Child	Acute Adolescent	Acute Geriatric	Accept Involuntary Patients
Brook Lane Health Services	Washington County	Western Maryland	65	42	√	√	√		√
Adventist Behavioral Health Rockville*	Montgomery County	Montgomery County	107	106	√	√	√		√
Sheppard and Enoch Pratt Hospital	Baltimore County	Central Maryland	322	260	√	√	√	√	√
Sheppard Pratt at Ellicott City	Howard County	Central Maryland	92	76	√		√		√
Adventist Behavioral Health Eastern Shore*	Dorchester County	Eastern Shore	15	15		√	√		No
<b>Maryland State Total</b>			<b>601</b>	<b>499</b>					

Source: Maryland Health Care Commission Survey: Special Hospitals - Psychiatric, June 1, 2012

\* Adventist Behavioral Health Rockville and Adventist Behavioral Health Eastern Shore were previously Potomac Ridge Behavioral Health Center and Potomac Ridge Behavioral Health Center Eastern Shore.

**Table 31. Inpatient Psychiatric Services Provided at State Special Hospitals - Psychiatric\*  
Maryland, June 1, 2012**

Jurisdiction/ Region Special Hospital Name		Licensed Psychiatric Beds	Budgeted Psychiatric Beds	Acute Adult	Acute Child	Acute Adolescent	Acute Geriatric	Acute Forensic	Accept Involuntary Patients
Allegany County	Thomas B. Finan Center	80	66					√	√
<b>Western Maryland Total</b>		<b>80</b>	<b>66</b>						
Baltimore County	Spring Grove Hospital Center	639	351	√		√	√	√	√
Carroll County	Springfield Hospital Center	522	220	√			√		√
Howard County	Clifton T. Perkins Hospital Center	250	247					√	√
<b>Central Maryland Total</b>		<b>1,411</b>	<b>818</b>						
Dorchester County	Eastern Shore Hospital Center	80	60	√			√	√	√
<b>Eastern Shore Total</b>		<b>80</b>	<b>60</b>						
<b>Maryland State Total</b>		<b>1,571</b>	<b>944</b>						

Source: Maryland Health Care Commission Survey: Special Hospitals - Psychiatric, June 1, 2011. Licensed and budgeted bed totals include both acute and continuing care psychiatric beds.

Partial Hospitalization Programs (PHP) and Intensive Outpatient Programs (IOP) for psychiatric patients are also provided in the acute care general hospital setting and the special hospital setting. PHPs and IOPs are organized day or night programs providing assessment, treatment, habilitation, or rehabilitation services for persons who do not require psychiatric inpatient care on a 24-hour basis. This may be a structured, ongoing program that the patient typically attends 2 to 5 times a week for 2 to 5 hours per day providing clinical behavioral health services. The plan of care is prescribed by and overseen by a psychiatrist. PHPs may be used as a “step-down” from inpatient care or a “step-up” from less intensive outpatient programming and are sometimes called “day hospital” programs. Services are usually provided in a group setting for at least 4 hours of direct clinical care per day, with additional individual and/or family therapy and medication management as needed. IOPs are a subset of PHPs and would typically involve fewer sessions per week and/or fewer hours per daily session. IOPs may be used as a “step-down” from PHPs or a “step-up” from less intensive outpatient care outside of the institutional setting.

MHCC surveyed the availability of PHPs and IOPs at hospitals, requesting information on the maximum number of treatment “slots” available and the daily program census on four specific dates between September, 2011 and June, 2012. Tables 32 and 33 profile these programs as offered in 23 acute care general hospitals and five freestanding private psychiatric hospitals, respectively. State-operated psychiatric hospitals do not provide PHP or IOP services. [NOTE: Average daily census is

the average number of patients based on patient census for four specific dates between September, 2011 and June, 2012, as reported by each hospital.]

**Table 32. Partial Hospitalization and/or Intensive Outpatient Psychiatric Services at Acute Care Hospitals: Maryland, June 1, 2012**

Jurisdiction/ Region		Partial Hospitalization/ Intensive Outpatient Programs	Maximum Number of Slots Available	Average Patient Census: Partial
Allegany County Frederick County	Western Maryland Regional Medical Center	√	12	7
	Frederick Memorial Hospital	√	15	8
	Meritus Medical Center	√	14	3
<b>Western Maryland Total</b>			<b>41</b>	
	MedStar Montgomery General Hospital	√	60	49
	Suburban Hospital	√	30	18
	Washington Adventist Hospital	√	45	15
<b>Montgomery County Total</b>			<b>135</b>	
Calvert County Prince George's County	Calvert Memorial Hospital	√	15	11
	Laurel Regional Hospital	√	15	12
	Prince George's Hospital Center	√	12	5
	Southern Maryland Hospital Center	√	20	7
St. Mary's County	MedStar St. Mary's Hospital	√	12	3
<b>Southern Maryland Total</b>			<b>74</b>	
Anne Arundel County Baltimore City        Baltimore County	Baltimore Washington Medical Center	√	16	10
	Bon Secours Hospital	√	16	8
	Johns Hopkins Bayview Medical Center	√	137	93
	Maryland General Hospital	—	—	—
	MedStar Union Memorial Hospital	√	22	19
	Sinai Hospital of Baltimore	√	20	11
	The Johns Hopkins Hospital	√	32	18
	University of Maryland Medical Center	√	36	13
	MedStar Franklin Square Hospital	—	—	—
	Northwest Hospital	—	—	—
	St. Joseph Hospital	√	25	12
	Carroll Hospital Center	√	35	13
Harford County	Harford Memorial Hospital	√	10	4
	Howard County General Hospital	—	—	—
<b>Central Maryland Total</b>			<b>349</b>	
Cecil County	Union Hospital of Cecil County**	√	12	—
Dorchester County	Dorchester General Hospital	√	14	7
Wicomico County	Peninsula Regional Medical Center	—	—	—
<b>Eastern Shore Total</b>			<b>26</b>	
<b>Maryland State Total</b>			<b>625</b>	

Source: Maryland Health Care Commission survey of psychiatric services capacity, June, 2012. \*\*The partial hospitalization and /or intensive outpatient service program at Union Hospital of Cecil County is discontinued effective 3/31/2011.

**Table 33. Partial Hospitalization and/or Intensive Outpatient Services at Private Special Hospitals -  
Psychiatric: Maryland, June 1, 2012**

<b>Jurisdiction/Region</b>	<b>Special Hospital - Psychiatric</b>	<b>Partial Hospitalization/ Intensive Outpatient Programs</b>	<b>Maximum Slots Available: Partial Hospitalization/ Intensive Outpatient Programs</b>	<b>Average Daily Census</b>
Washington County	Brook Lane Health Services	√	28	14
	<b><i>Western Maryland Total</i></b>		<b>28</b>	
Montgomery County	Adventist Behavioral Health - Rockville	√	40	28
	<b><i>Montgomery County Total</i></b>		<b>40</b>	
Baltimore County	Sheppard Pratt Hospital	√	150	98
Howard County	Sheppard Pratt at Ellicott City	√	20	18
	<b><i>Central Maryland Total</i></b>		<b>170</b>	
Dorchester County	Adventist Behavioral Health Eastern Shore	√	10	4
	<b><i>Eastern Shore Total</i></b>		<b>10</b>	
	<b><i>Maryland State Total</i></b>		<b>248</b>	

Source: Maryland Health Care Commission survey of psychiatric services capacity, June, 2012

The following tables profile psychiatric hospital bed capacity for the three types of hospital settings, across several bed capacity dimensions, including licensed beds, physical bed capacity, and staffed beds. They also provide recent patient day and bed occupancy rate information. In the case of the State psychiatric hospitals, total inpatient days are reported for FY 2011. [The average annual bed occupancy rate reflects the ratio of CY 2011 average daily census (CY 2011 patient days/365) to reported June 1, 2011 staffed beds.]

**Table 34. Inventory and Utilization of Psychiatric Beds at General Acute Care Hospitals**

Jurisdiction/Region		Licensed Beds Designated Psychiatric FY 2012	Beds, June 1, 2012		Patient Days CY 2011	Staffed Occupancy CY2011
			Physical Capacity	Staffed Beds		
Allegany County	Western Maryland Regional Medical Center	20	19	17	5,084	82%
Frederick County	Frederick Memorial Hospital	21	21	21	7,386	96%
	Meritus Medical Center	18	18	18	4,796	73%
<b>Western Maryland Total</b>		<b>59</b>	<b>58</b>	<b>56</b>	<b>17,266</b>	<b>84%</b>
Montgomery County	MedStar Montgomery General Hospital	25	33	25	5,687	62%
	Suburban Hospital	24	24	24	6,948	79%
	Washington Adventist Hospital	40	40	40	8,944	61%
<b>Montgomery County Total</b>		<b>89</b>	<b>97</b>	<b>89</b>	<b>21,579</b>	<b>66%</b>
Calvert County	Calvert Memorial Hospital	11	17	12	3,242	74%
Prince George's County	Laurel Regional Hospital	14	18	14	3,649	71%
	Prince George's Hospital Center	28	36	24	7,866	90%
	Southern Maryland Hospital Center	25	25	25	6,446	71%
St. Mary's County	MedStar St. Mary's Hospital	12	12	12	2,158	49%
<b>Southern Maryland Total</b>		<b>90</b>	<b>108</b>	<b>87</b>	<b>23,361</b>	<b>74%</b>
Anne Arundel County	Baltimore Washington Medical Center	14	14	14	5,224	102%
Baltimore City	Bon Secours Hospital	32	32	32	8,851	76%
	Johns Hopkins Bayview Medical Center	20	20	20	6,861	94%
	Maryland General Hospital	28	28	28	9,745	95%
	MedStar Union Memorial Hospital	26	26	26	8,538	90%
	Sinai Hospital of Baltimore	24	24	24	8,383	96%
	The Johns Hopkins Hospital	108	108	100	29,882	82%
Baltimore County	University of Maryland Medical Center	56	56	56	15,876	78%
	MedStar Franklin Square Hospital	24	24	24	7,154	82%
	Northwest Hospital	14	14	14	5,111	100%
	St. Joseph Hospital	19	19	19	5,899	85%
Carroll County	Carroll Hospital Center	20	20	16	5,425	93%
Harford County	Harford Memorial Hospital	27	27	27	6,841	69%
	Howard County General Hospital	20	20	20	5,575	76%
<b>Central Maryland Total</b>		<b>432</b>	<b>432</b>	<b>420</b>	<b>129,365</b>	<b>84%</b>
Cecil County	Union Hospital of Cecil County	7	13	7	2,477	97%
Dorchester County	Dorchester General Hospital	16	16	16	4,087	70%
Wicomico County	Peninsula Regional Medical Center	10	10	10	4,185	115%
	<b>Eastern Shore Total</b>	<b>33</b>	<b>39</b>	<b>33</b>	<b>10,749</b>	<b>89%</b>
<b>Maryland State Total</b>		<b>703</b>	<b>734</b>	<b>685</b>	<b>202,320</b>	<b>81%</b>

Sources: Licensed beds designated as psychiatric, Maryland Health Care Commission and Office of Health Care Quality, Acute General Hospital Licensed Bed Designation, FY 2012. Physical capacity and staffed beds, MHCC Supplemental Survey: Psychiatric Services Capacity, June 1, 2012. Patient Days, Health Services Cost Review Commission, Discharge Abstract, CY 2011. Staffed Occupancy is calculated as (patient days)/(staffed beds\*365)

**Table 35. Inventory and Utilization of Acute Psychiatric Beds at Private Psychiatric Hospitals: Maryland, 2012**

Jurisdiction/Region	Special Hospital - Psychiatric	Beds, June 1, 2012			Patient Days CY2011	Staffed Occupancy CY2011
		Licensed Beds	Physical Capacity	Staffed Beds		
Washington County/ Western Maryland	Brook Lane Health Services	65	42	42	11,924	78%
Montgomery County/ Montgomery	Adventist Behavioral Health - Rockville	107	106	106		
Dorchester County/ Eastern Shore	Adventist Behavioral Health - Eastern Shore	15	15	15	29,860	72%
Baltimore County/ Central Maryland	Sheppard Pratt Hospital	322	322	260		
Howard County/ Central Maryland	Sheppard Pratt at Ellicott City	92	92	76	103,549	86%

Sources: Licensed Beds, Office of Health Care Quality; Physical Capacity and Staffed Beds, Maryland Health Care Commission June, 2012 Survey; Psychiatric Service Capacity; Patient Days, Health Services Cost Review Commission, Discharge Database, CY2011.

Staffed Occupancy is calculated using the formula, (patient days)/(staffed beds\*365).

Sheppard Pratt and Adventist Behavioral Health combine their sites' patient data when reporting to HSCRC.

**Table 36. Inventory and Utilization of Psychiatric Beds at State Psychiatric Hospitals: Maryland, 2012**

Jurisdiction/Region		Beds, June 1, 2012						Patient Days FY 2011	Staffed Occupancy FY 2011
		Licensed Beds	State Budgeted Beds	Physical Capacity		Staffed Beds			
				Acute Care	Continuing Care	Acute Care	Continuing Care		
Allegany County	Thomas B. Finan Center	119	66	66	22	44	22	23,836	103%
Western Maryland Total		119	66	66	22	44	22	23,836	103%
Baltimore County	Spring Grove Hospital Center	639	351	148	335	109	266	135,187	99%
Carroll County	Springfield Hospital Center	522	220	114	131	114	131	83,906	92%
Howard County	Clifton T. Perkins Hospital Center	250	247	20	248	18	221	80,506	100%
Central Maryland Total		1,411	818	282	714	241	618	299,599	97%
Dorchester County	Eastern Shore Hospital Center	80	60	20	40	20	40	21,170	97%
Kent County	Upper Shore Community Mental Health Center	Closed 1/4/2010							
Eastern Shore Total		80	60	20	40	20	40	21,170	97%
Maryland State Total		1,610	944	368	776	305	680	344,605	97%

Source: Staffed beds and physical bed capacity: Maryland Health Care Commission Survey; Special Hospitals - Psychiatric, June 1, 2012; Licensed bed inventory, Office of Health Care Quality, DHMH; budgeted beds, patient days, Hospital Management Information System.

Staffed Occupancy is calculated using the formula, (patient days)/(staffed beds\*365).



4160 Patterson Avenue  
Baltimore, Maryland 21215  
Telephone: (410) 764-3460  
FAX: (410) 358-1236  
Toll Free: 1 (877) 245-1762  
TDD: 1 (800) 735-2258  
<http://mhcc.maryland.gov>