



marks thomas

FOUNDED IN 1967

50-PERSON WBE FIRM

BALTIMORE-BASED, OFFICE IN RICHMOND

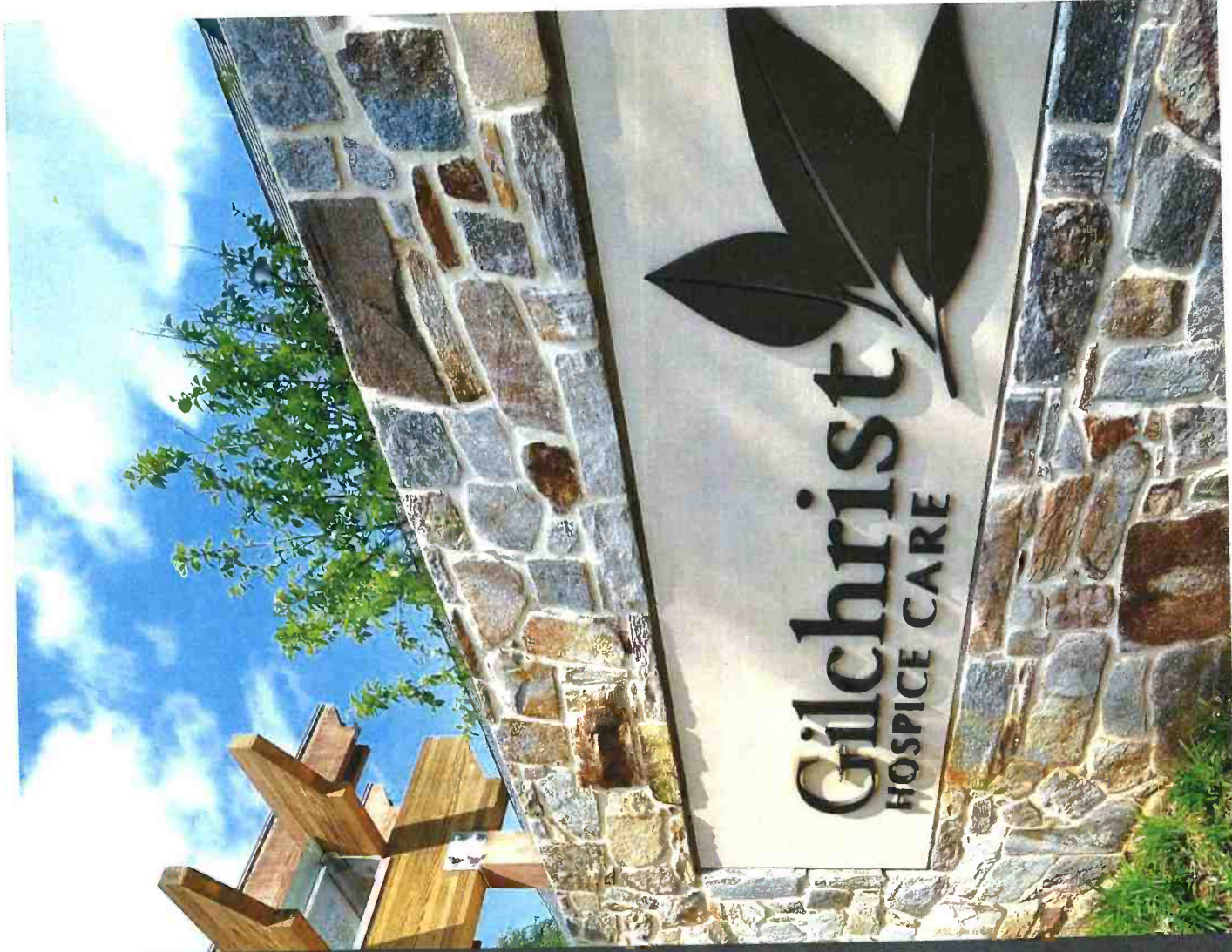
**NATIONALLY
RECOGNIZED FOR DESIGN EXCELLENCE**

BALTIMORE OFFICE:
1414 KEY HWY 2ND FLOOR BALTIMORE, MD 21230 |
410.539.4300

RICHMOND OFFICE:
3412 WEST LEIGH STREET RICHMOND, VA 23230 |
804.447.6845

WWW.MARKS-THOMAS.COM

PENNSYLVANIA DBE/SBE
MARYLAND MBE/DBE/SBE
BALTIMORE CITY WBE





marks thomas

PRECEDENTS



marks thomas

SITE CONTEXT



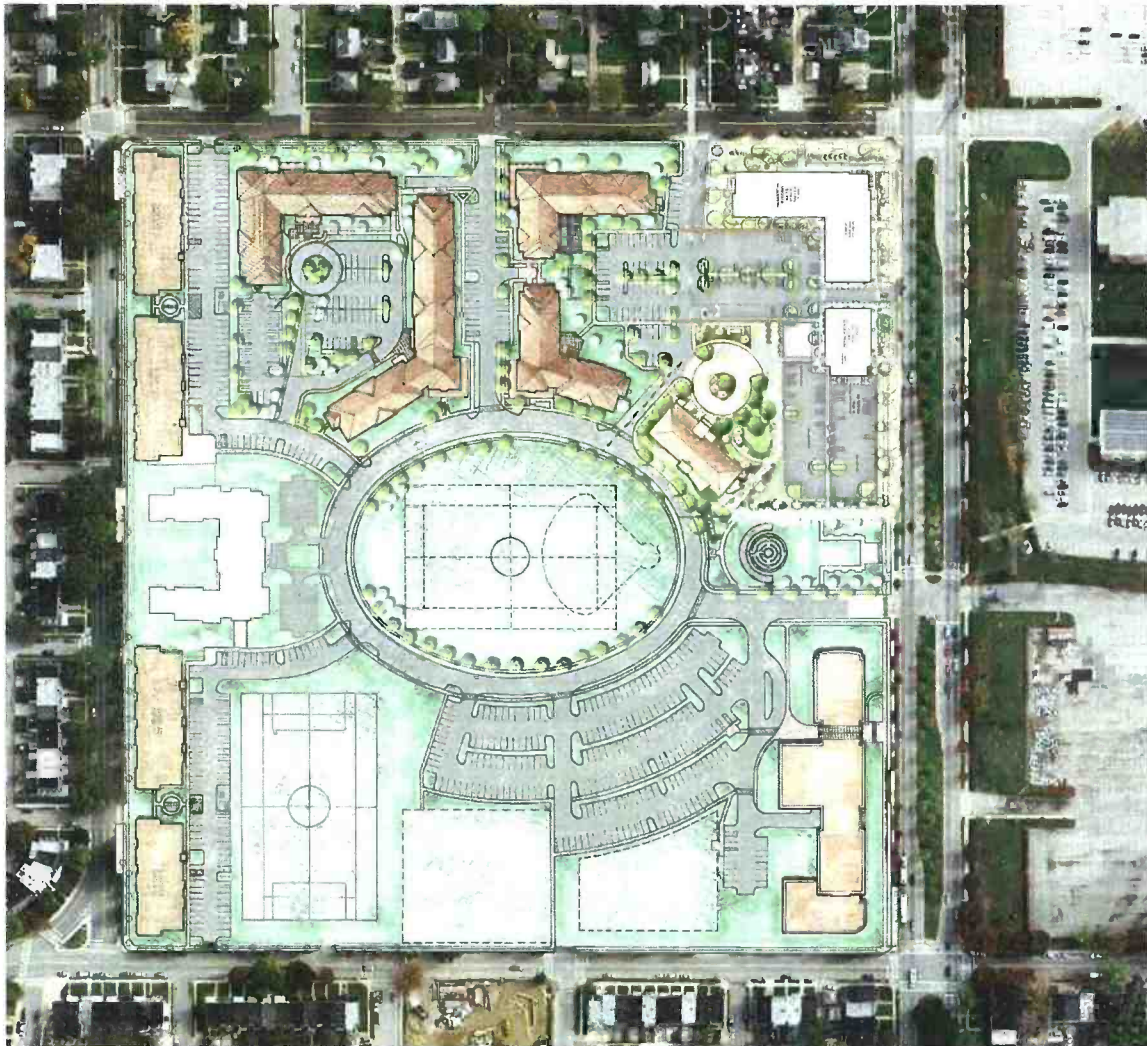
marks thomas


36TH STREET CONTEXT



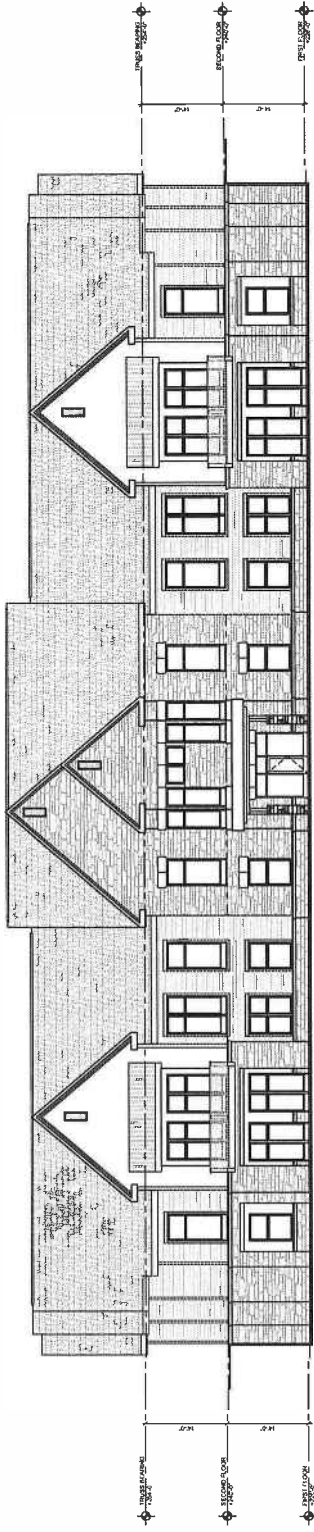
EXISTING SITE

 marks thomas

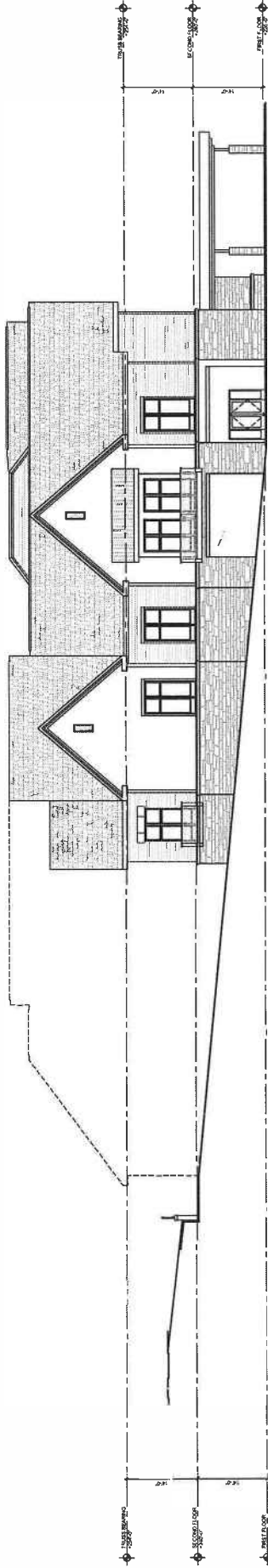


 marks thomas

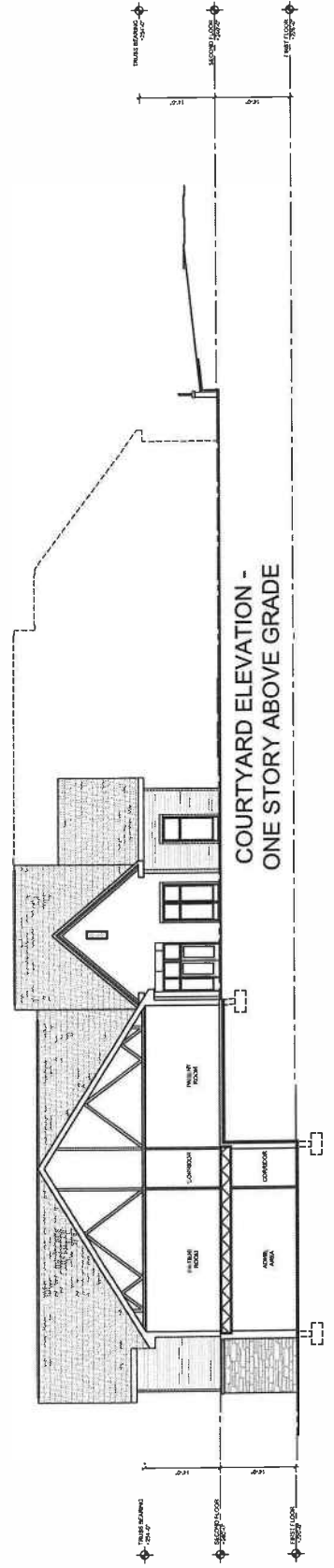
SITE PLAN



SOUTH

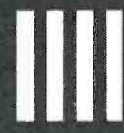
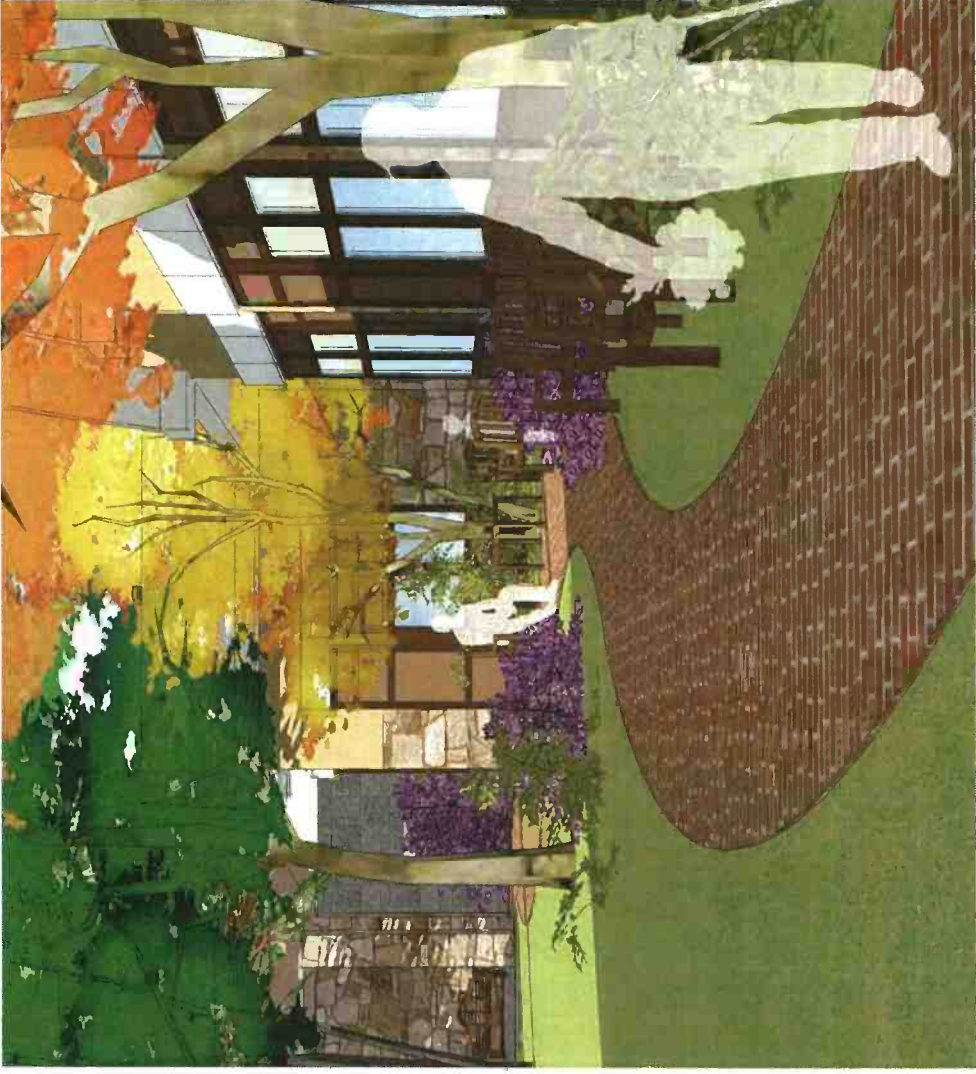


WEST (EAST SIM.)



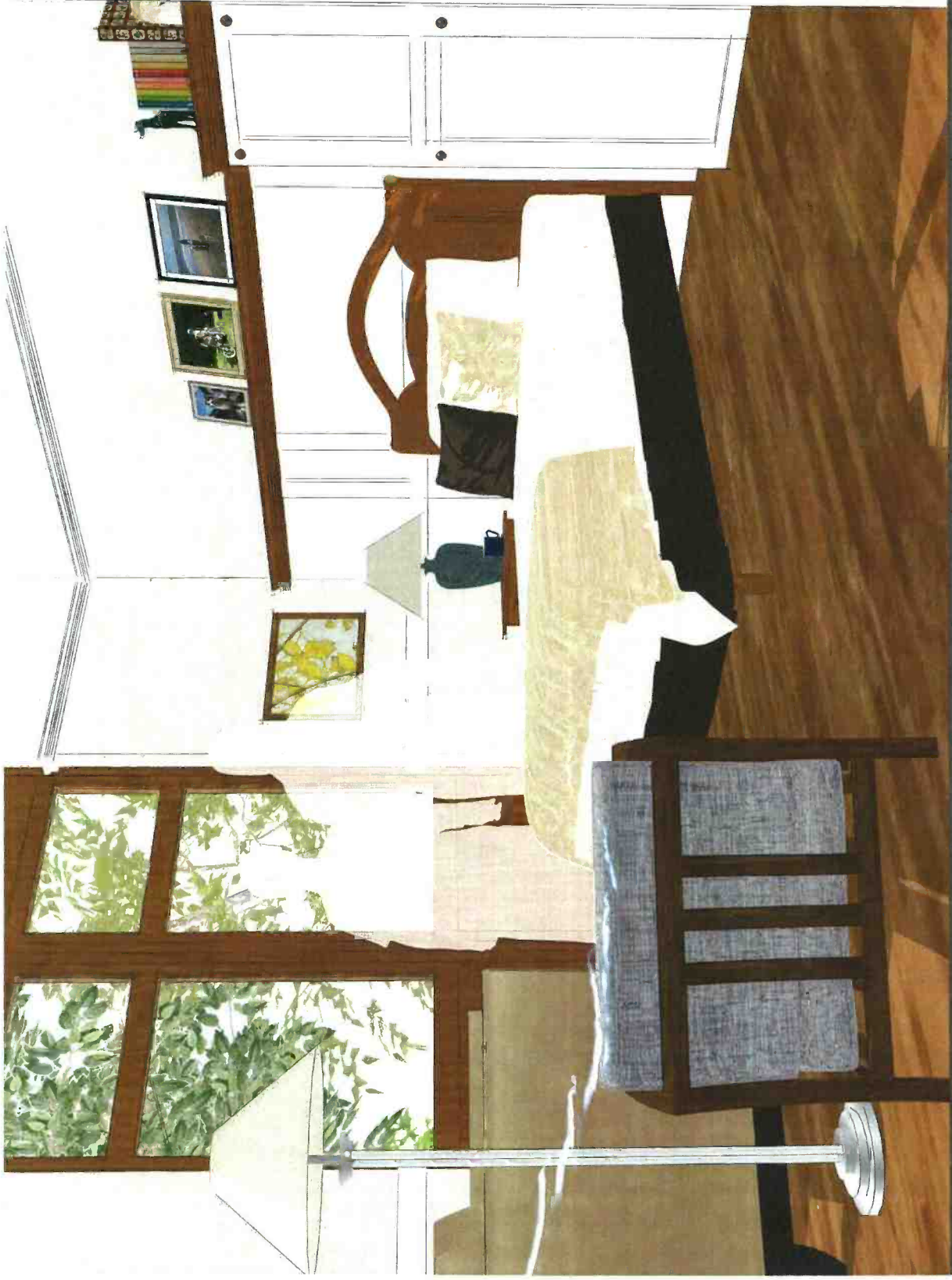
SECTION THRU
TWO-STORY WING

EXTERIOR ELEVATION
 INTERIOR ELEVATION
 SECTION ELEVATION
 DIMENSION ELEVATION



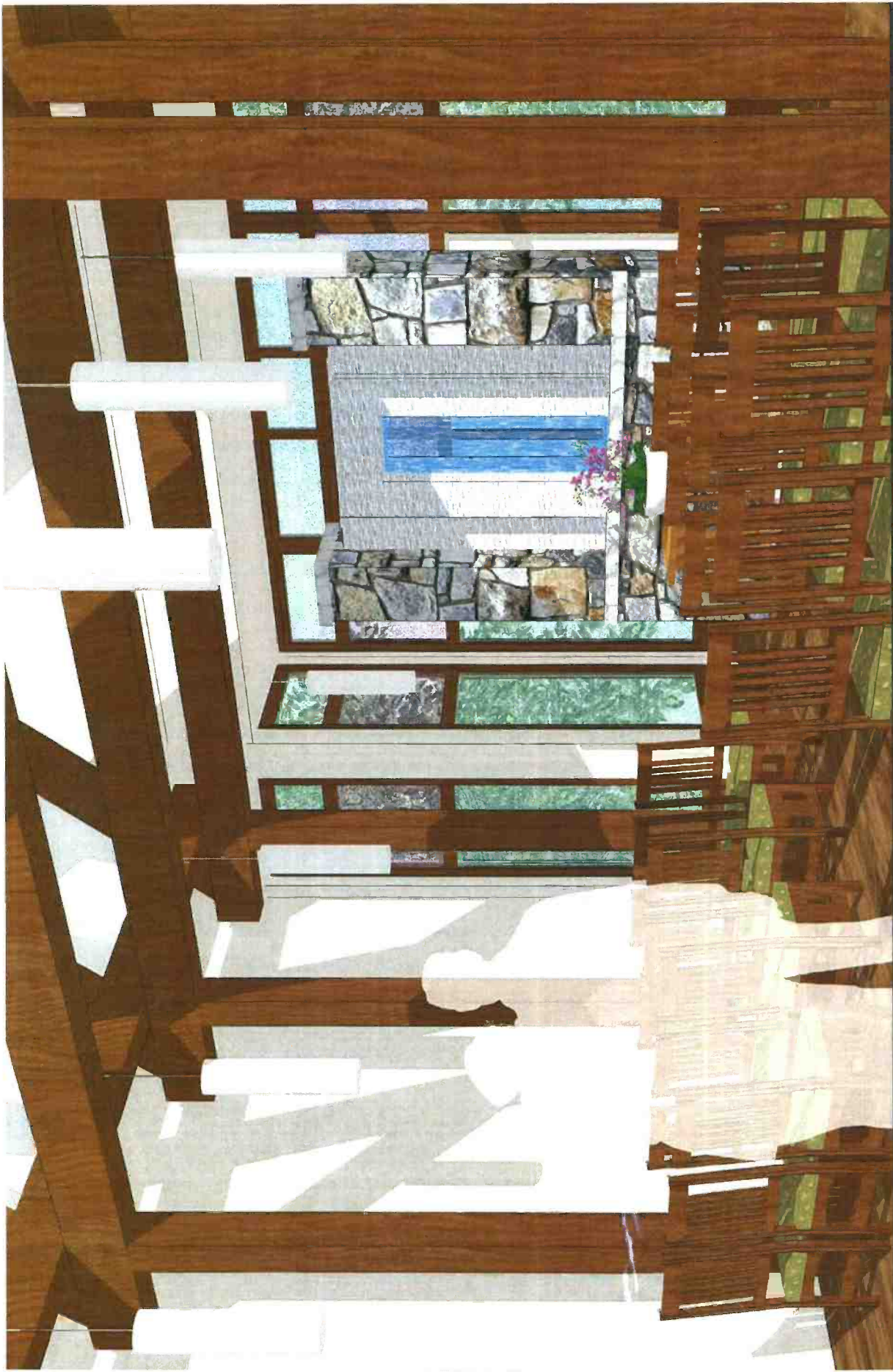
marks thomas

COURTYARD



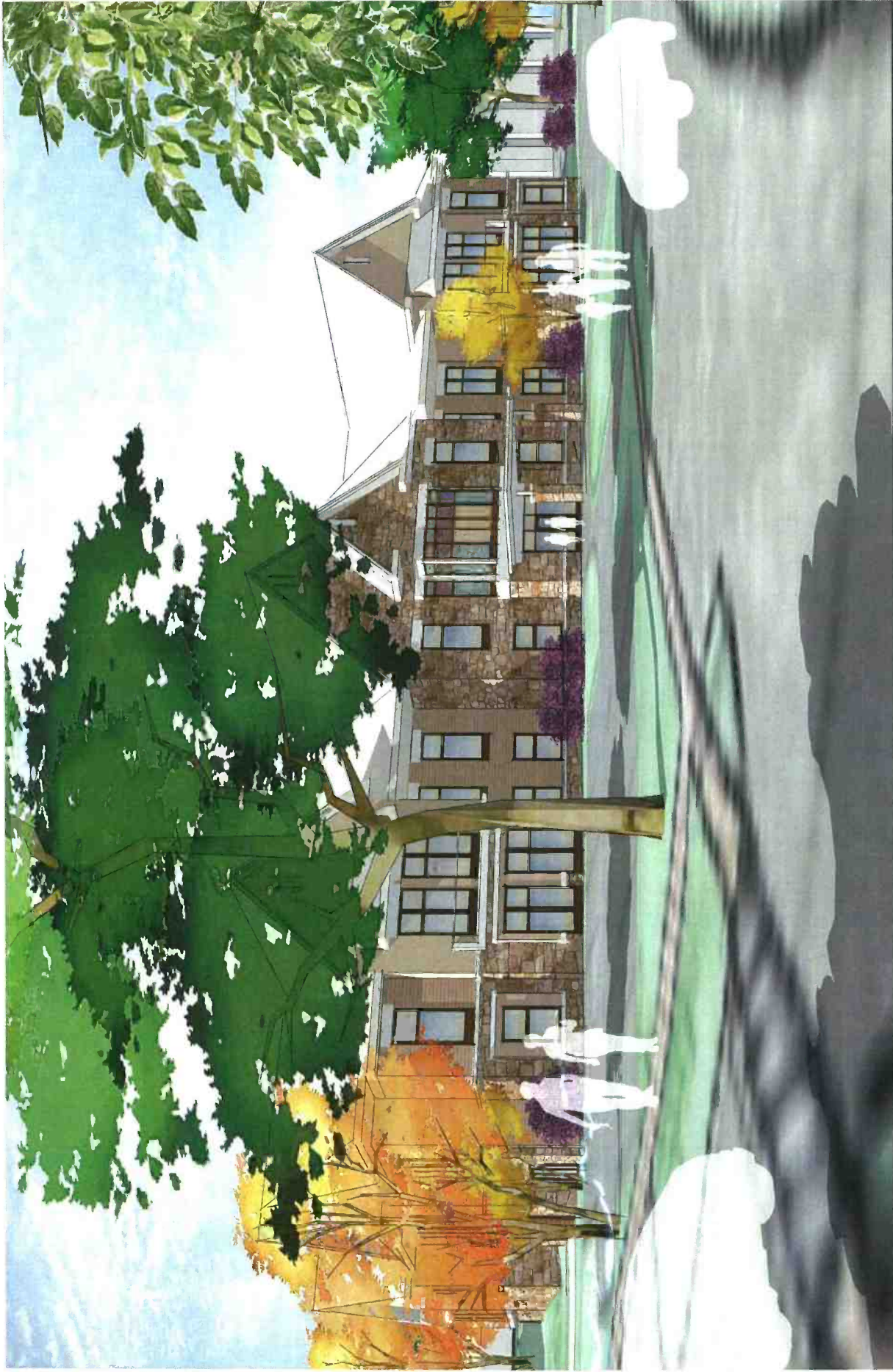
marks thomas

PATIENT ROOM



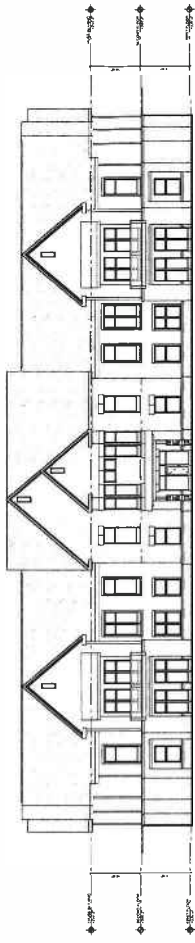
CHAPEL

 marks thomas

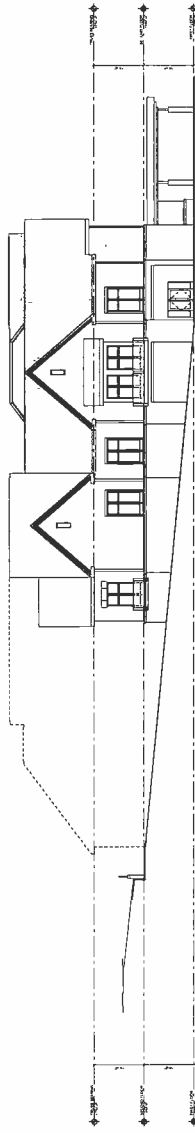


marks thomas

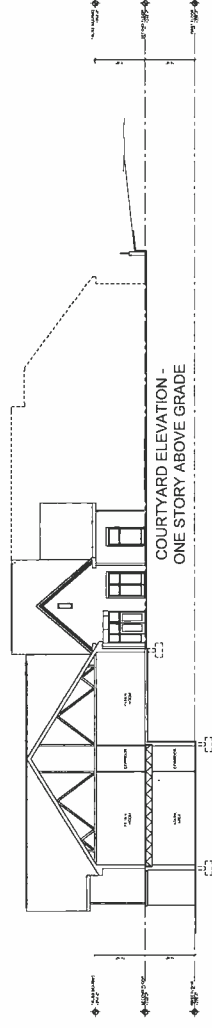
CHAPEL



SOUTH

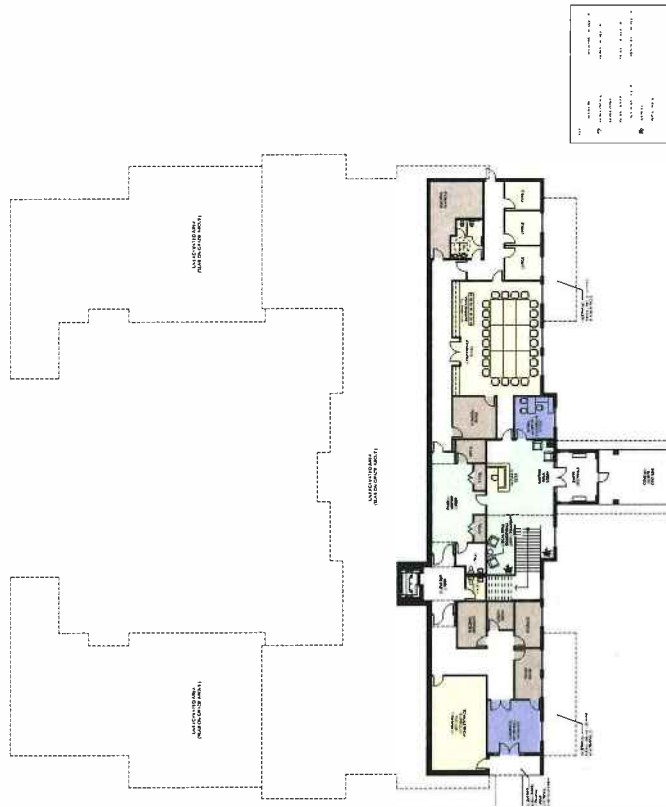


WEST (EAST SIM.)



SECTION THRU
TWO-STORY WING

ELEVATIONS



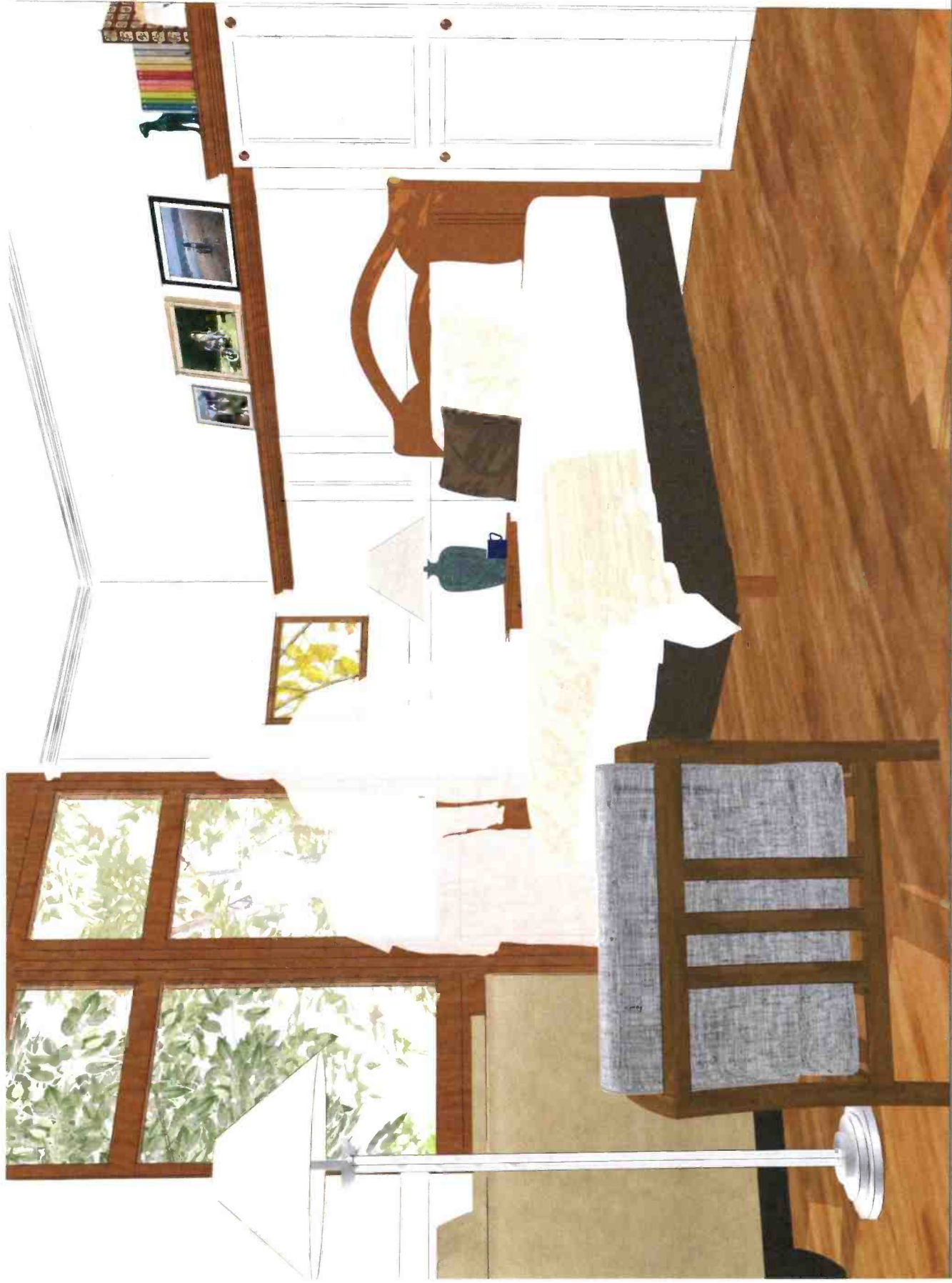
FIRST FLOOR

Copyright: All rights reserved.
These drawings are protected under the
Copyright Act (1987) and shall not be
reproduced, stored in a retrieval system,
transmitted, or otherwise disseminated in
any form or by any means, without the
written permission of the
architectural building design, unit layout,
unit mix, and exterior elevations, etc.
shown herein are for illustrative purposes
only and subject to change with final design
and permit requirements.

Gilchrist
ELEVATIONS
AUGUST 02, 2017



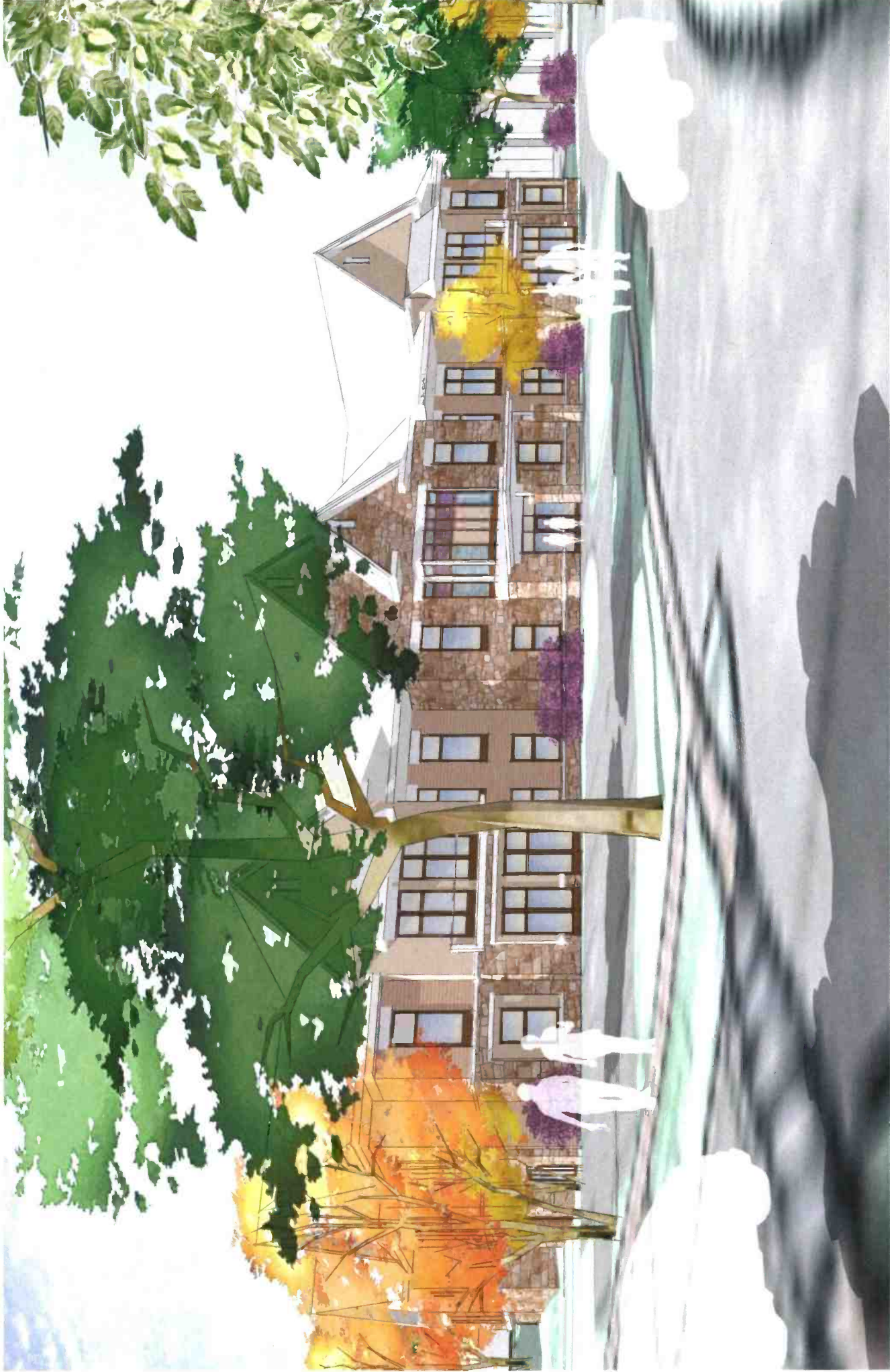






marks thomas

CHAPEL



 marks thomas

CHAPEL

